

We are IntechOpen, the world's leading publisher of Open Access books Built by scientists, for scientists

4,800

Open access books available

122,000

International authors and editors

135M

Downloads

Our authors are among the

154

Countries delivered to

TOP 1%

most cited scientists

12.2%

Contributors from top 500 universities



WEB OF SCIENCE™

Selection of our books indexed in the Book Citation Index
in Web of Science™ Core Collection (BKCI)

Interested in publishing with us?
Contact book.department@intechopen.com

Numbers displayed above are based on latest data collected.

For more information visit www.intechopen.com



Sex Hormones and Vascular Function

Meaghan Bowling, Suzanne Oparil,
Fadi Hage, Robert Hilgers and Dongqi Xing
University of Alabama at Birmingham
USA

1. Introduction

The relationship between sex hormones and cardiovascular function and disease has long been recognized. As early as the 1950s, researchers concluded that although levels of cholesterol played a major role in the development of cardiovascular disease (CVD), other factors, including gender and hormones, played a role as well. (Anonymous, 1958). Since that time, despite extensive research focusing on the effects of estrogen on vascular function, the relationship remains poorly understood. Furthermore, clinical treatment of postmenopausal women with hormone replacement therapy (HRT) continues to be controversial due to conflicting findings in clinical trials.

Until the 1990s, extensive observational data suggested that HRT was cardioprotective. However, results from the Heart and Estrogen/Progestin Replacement Study (HERS-I and -II) did not confirm a protective effect of HRT on the heart. (Hulley et al 1996; Grady et al 2002). Later, data from the Women's Health Initiative (WHI) reported an increase in coronary heart disease (CHD) risk in women treated with combined estrogen-progestin compared to placebo, while the WHI unopposed-estrogen arm showed no increase in CHD events (Roussow et al, 2002; Anderson et al, 2004). Since release of the WHI, follow-up analyses have shown that the timing of initiation of HRT makes a difference in outcomes. These analyses showed that younger postmenopausal women who initiate therapy at the time of menopause are not at increased risk of CHD events compared to women who initiate therapy at a later age.

In this chapter, we will discuss the pathophysiologic effects of sex hormones on the vasculature, describe both clinical and basic research that has led us to our current understanding, and conclude with future perspectives on avenues of investigation that may lead to innovative treatments for postmenopausal women.

2. Physiology of estrogen actions

2.1 Estrogen metabolism

Estrogen is a steroid hormone that is produced by aromatization of androgen precursors, specifically androstenedione. (Speroff and Fritz, 2005) Estrogens are synthesized primarily in the ovary, with minor contribution from adipose, skin, muscle, and endometrial tissue. In premenopausal women, the primary form of estrogen is 17 β -estradiol, often simply referred to as estradiol or E2 (for the two hydroxyl groups located on the basic estrogen ring

structure). (Speroff and Fritz, 2005) Estradiol is the form of estrogen used in most pre-clinical studies, and will be abbreviated as 'E2' in this chapter. Clinical studies, particularly studies of HRT, have employed a variety of naturally occurring or synthetic estrogens, which will be identified specifically in the text. Other forms of estrogen include estrone and estriol. Estrone, like estradiol, is produced by aromatization of androstenedione, and is the primary estrogen in postmenopausal women. Estriol is a peripheral metabolite of estrone and estradiol and is not secreted by the ovary. Estriol is the dominant form of estrogen in pregnant women. (Speroff and Fritz, 2005)

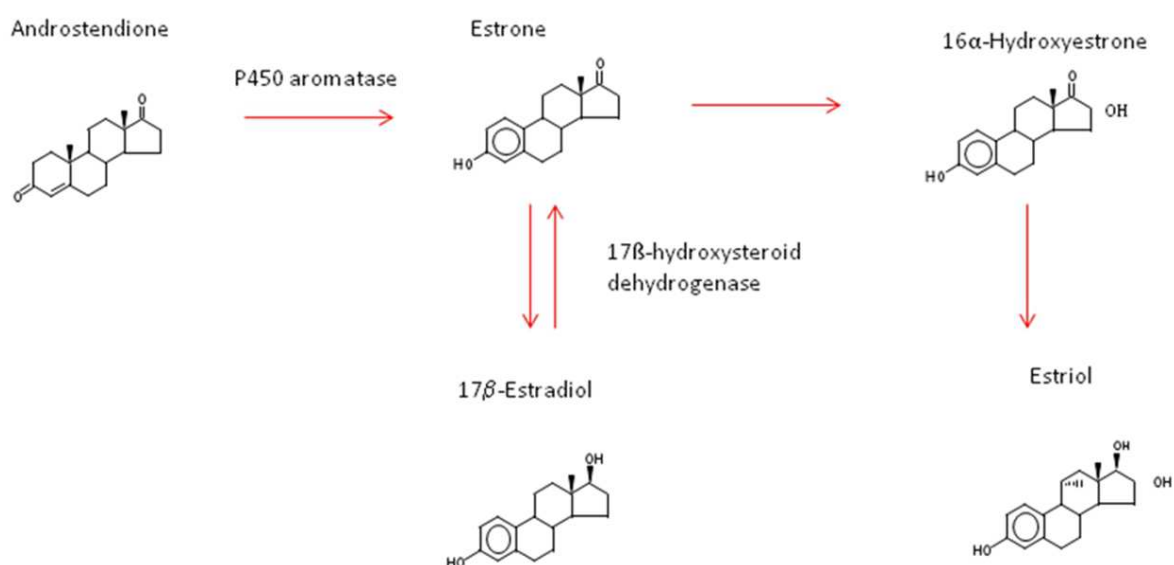


Fig. 1. Estrogen Metabolism (modified from Science Slides Suite © 2010)

The majority of circulating estrogens are bound to carrier proteins, including albumin and sex hormone-binding globulin (SHBG). Albumin binds 30 percent of circulating estrogen and SHBG binds another 69 percent. (Speroff and Fritz, 2005) Only the remaining 1 percent of estrogen that is not protein bound is physiologically active.

2.2 Estrogen receptors

Estrogens act on specific estrogen receptors (ERs) that are differentially expressed in various tissues. There are at least three, and possibly four distinct estrogen receptors. Two of these are the classic ERs: ER α and ER- β . Other ERs include the more recently discovered G protein-coupled receptor (GPER, GPR30, and a putative receptor (ER-X), that has been studied mainly in brain. (Miller et al, 2008)

ER α and ER β are members of the nuclear steroid hormone receptor superfamily and function as ligand-activated transcription factors. (Speroff and Fritz, 2005) They are expressed in the vasculature and play a role in mediating/modulating responses to vascular injury. Once an estrogen ligand binds to its receptor, the receptor undergoes a conformational change that leads to downstream events in the nucleus, activating or inactivating transcription factors that lead to alterations in gene expression. The conformational plasticity of the ERs is a major reason that estrogen is able to have a variety of agonist/antagonist effects in a given cell or tissue. (Speroff and Fritz, 2005) ER α and ER β play a pivotal role in vascular remodeling in response to vascular injury.

GPER (GPR30) is an intracellular transmembrane ER that initiates many rapid non-genomic signaling events, including intracellular calcium mobilization and synthesis of phosphatidyl-inositol 3,4,5-triphosphate in the nucleus of multiple cell types. (Revankar et al, 2005). GPER has been indentified in human internal mammary arteries, saphenous veins, and contributes to vasorelaxation in arteries, although this mechanism remains to be fully understood (Haas et al, 2009)

Estrogen acts on various cell types through both genomic and non-genomic mechanisms. Genomic effects occur when estrogen binds to ERs in target tissue cell nuclei, resulting in changes in gene expression. Multiple genes in both the nuclear and mitochondrial genomes are regulated by ER α and ER β . (O'Lone et al, 2007) In aortic smooth muscle cells and endothelial cells of wild-type ovariectomized mice, E2 treatment resulted in both up- and down-regulation of multiple genes involved in mitochondrial fuction. ER α upregulated four clusters of genes, while ER β downregulated a different set of mitochondrial genes. E2 also stimulates oxidative phosphorylation and inhibits production of superoxide and other reactive oxygen species in mitochondria. (O'Lone et al, 2007) It is hypothesized that this mechanism decreases the rate of accumulation of mitochondrial DNA mutations over a lifespan, and therefore protects against age-related disease. This notion is relevant to the development of CVD and timing of HRT initiation. (O'Lone et al, 2007)

Estrogen can also trigger non-genomic events by binding to targets other than nuclear receptors, eg., cell membrane ERs. (Kelly and Levin, 2001) Non-genomic effects, such as direct activation of intracellular signaling pathways, can be rapid and do not require changes in gene expression, although the long-term consequences include altered transcription of targeted genes.

3. Physiology of progesterone actions

3.1 Progesterone metabolism and progesterone receptors

Progesterone is a steroid hormone that is synthesized from the precursor pregnenolone (a cholesterol metabolite) by 3 β -hydroxysteroid dehydrogenase in the ovaries and adrenal glands. (Figure 2)

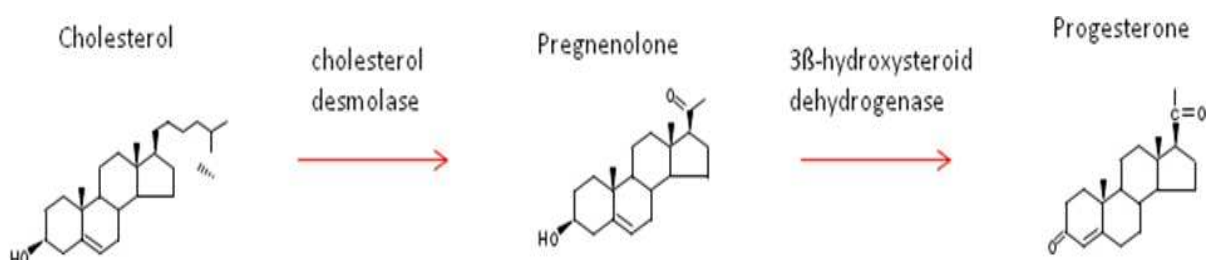


Fig. 2. Progesterone Metabolism ((modified from Science Slides Suite © 2010))

Progesterone acts on two major progesterone receptors (PRs), PR-A and PR-B. (Speroff and Fritz, 2005) While the role of ERs in vascular physiology and pathophysiology is well studied, the literature on PRs is limited and most of what is known about their biological function is derived from studies of reproductive tissues. PR-A and PR-B can form homodimers (AA and BB) or heterodimers (AB) upon binding to a progestin. Downstream effects include protein phosphorylation and modulation of gene transcription. (Speroff and Fritz, 2005) Based on in-vitro studies of endometrium and breast tissue, PR-B is a positive

regulator of progesterone-responsive genes, whereas PR-A activation inhibits PR-B activity. Like estrogen, progesterone has both genomic and non-genomic effects, binding both nuclear and cell membrane receptors.

4. Physiologic effects of sex hormones on the vasculature

4.1 Estrogen effects on vascular reactivity

E2 has rapid non-genomic actions on the arterial wall, resulting in vasodilation. Administration of E2 to ovariectomized ewes results in rapid uterine vasodilation, leading to a rise in uterine blood flow within 30 to 45 min (Killam et al, 1973). This rise in uterine blood flow is partially mediated by ER activation and release of nitric oxide (NO), as shown by local infusion of the nonselective ER blocker ICI 162,780 or the NO synthase blocker L-NAME, respectively, into the main uterine artery of nonpregnant ewes (Van Buren et al, 1992). A better understanding of the mechanism(s) by which E2 increases NO production in the vasculature comes from *in vitro* experiments with cultured endothelial cells. E2 stimulates eNOS activity via an ER α -mediated process in endothelial cells (Chen et al, 1999). ER α and ER β are present on the endothelial cell membrane and are expressed in a wide range of blood vessels from different vascular beds and species (Andersson et al, 2001). The ER α and eNOS proteins are organized into a functional signaling module in caveolae located on endothelial cell membranes (Chambliss et al, 2000). The role of the ER β in vasodilation is less clear, but studies from ER β knockout mice have shown an inhibitory role of ER β in ER α -mediated NO relaxation (Pettersson et al, 2000).

GPER is a seven-transmembrane G protein-coupled ER that has only recently been shown to play a role in the vasculature (Haas et al, 2007). Isoflavones, natural estrogenic compounds (phytoestrogens) found in soy products, e.g. genistein and daidzein, and selective ER modulators (SERMs), e.g. tamoxifen and raloxifene, bind to GPER (Filardo et al, 2000). Selective stimulation of GPER by intravenous infusion of the GPER agonist G-1 results in an acute reduction in blood pressure in rats (Haas et al, 2009). G-1 relaxes *ex vivo* rat and human arteries via an endothelium-dependent and L-NAME-sensitive mechanism (Haas et al, 2009). It is uncertain whether E₂-induced relaxing responses are mediated via GPER or whether crosstalk between ER α /ER β and GPER exists. Selective GPER antagonists like G-15 (Dennis et al, 2009) might unravel a role for GPER-dependent vasorelaxation upon E2 signaling in the vasculature.

E2 results in vasorelaxation even in the absence of a functional endothelium (Jiang et al, 1991), due primarily to Ca²⁺-antagonistic effects in smooth muscle cells. E2 inhibits voltage-dependent calcium inward currents on smooth muscle cells, but not on endothelial cells (Shan et al, 1994; Kitazawa et al, 1997). This leads to a reduction in intracellular Ca²⁺ concentration and lower Ca²⁺-calmodulin-dependent myosin light chain phosphorylation and contraction (Somlyo and Somlyo, 1994). In addition to these Ca²⁺-antagonistic effects on smooth muscle cells, a variety of endothelium-independent mechanisms have been proposed to account for E₂-induced vasodilation. E2 has been reported to increase cAMP and cGMP levels in the vasculature, thus suggesting a cyclic nucleotide-dependent mechanism of relaxation (Kuehl et al, 1974). For instance, in the porcine coronary artery, E2 causes relaxation via protein kinase G activation and cAMP-dependent opening of large-conductance Ca²⁺-activated K⁺ channels (BK_{Ca}) (Rosenfeld et al, 2000). In human coronary artery smooth muscle cells, E2 has been shown to open BK_{Ca}

channels by stimulating neuronal NOS via a signal pathway involving PI3-kinase and Akt (Han et al, 2007).

In summary, E₂ at pharmacological concentrations causes vasorelaxation via a combination of endothelium-dependent, ER-mediated actions and contraction-modulating effects at the level of the smooth muscle cell. The E₂-induced relaxing profile in a specific vascular bed depends on the species, gender, expression patterns and degree of dimerization and crosstalk between the ER subtypes.

4.2 Sex hormone effects on blood pressure

4.2.1 Estrogen effects on blood pressure

Endogenous E₂ lowers BP. Observational studies have demonstrated that BP is lower when E₂ levels peak during the luteal phase than when they are at their nadir during the follicular phase of the menstrual cycle (Dunne et al, 1991; Karpanou et al, 1993; Chapman et al, 1997). Menopause is associated with a significant increase in BP in cross-sectional studies (Staessen et al, 1998). In a prospective study of BP in premenopausal, perimenopausal, and postmenopausal women, an age-independent 4-5 mmHg increase in systolic BP was found in postmenopausal women (Staessen et al, 1997). Further, BP is reduced when endogenous E₂ levels are elevated during pregnancy (Siamopoulos et al, 1996). Data on the BP effects of estrogen replacement therapy (ERT) in menopausal women have been inconsistent, with reports of BP neutral (PEPI Trial Writing Group, 1995), BP lowering (Mercuro et al, 1997; Mercuro et al, 1998; Cagnacci et al, 1999; Seely et al, 1999; Butkevich et al, 2000) and BP elevating effects (Anderson et al, 2004; Wassertheil-Smoller et al, 2000). In the Postmenopausal Estrogen/Progestin interventions (PEPI) trial, which enrolled 875 healthy normotensive early postmenopausal women, assignment to conjugated equine estrogens (CEE), 0.625 mg/d ± a progestin did not impact systolic or diastolic BP when compared with placebo controls (PEPI Trial Writing Group, 1995). In contrast, when transdermal E₂ was administered at physiologic doses to healthy postmenopausal women in two studies that evaluated ambulatory BP, active treatment significantly lowered nocturnal systolic, diastolic and mean BP by 3-7 mmHg compared with placebo (Cagnacci et al, 1999; Seely et al, 1999). The observational study component of the WHI (WHI-OS) collected data on risk factors for CVD, including BP, from 98,705 women aged 50-79 yr, the largest multiethnic, best characterized cohort of postmenopausal women ever studied (Wassertheil-Smoller et al, 2000). WHI-OS found that current HRT use was associated with a 25% greater likelihood of having hypertension compared with past use or no prior use. Further, among 5310 postmenopausal women randomized to CEE (0.625 mg/d) alone compared to a placebo group as part of the randomized controlled trial component of WHI, there was a 1.1-mmHg increase from baseline in systolic BP that persisted throughout the 6.8 yr of follow up (Anderson et al, 2004). There was no difference in diastolic BP between treatment groups.

4.2.2 Progestin effects on blood pressure

Similar to estrogens, the effects of progestins on BP are dependent on the type of progestin. Natural progesterone has been associated with BP lowering or neutral effects. Higher levels of progesterone correlate with lower systolic but not diastolic BP during the second and third trimesters of pregnancy (Kristiansson et al, 2001). In a crossover study of 15 postmenopausal women assigned to placebo or transdermal E₂ ± intravaginal progesterone,

addition of progesterone did not affect the nocturnal BP lowering seen with E2 compared with placebo (Seely et al, 1999). Similarly, medroxyprogesterone acetate (MPA) appears to have BP neutral or lowering effects. In a double-blind, crossover study of postmenopausal women assigned to CEE and placebo or increasing doses of MPA, there was a dose-dependent decrease in ambulatory daytime diastolic and mean BPs for women assigned to the progestin compared with placebo (Harvey et al, 2001). In contrast, most studies of synthetic progestins for contraception or hormone therapy have revealed a BP-elevating effect. Oral contraceptives in particular appear to precipitate or accelerate hypertension (Rosenthal et al, 2000).

4.3 Estrogen effects on lipoproteins

E2 also affects serum lipoprotein levels and the interaction of lipoproteins with cellular elements in the vessel wall. E2 has been shown to protect against atherosclerotic lesion formation in multiple animal models. In primate models, E2 results in up to a 66 percent decrease in aortic atherosclerotic plaque size. (Bjarnson et al, 1997) Mouse models have been widely used to study atherosclerosis because of the ability to easily inactivate targeted genes coding for apolipoprotein E (*ApoE*) and the LDL receptor (*Ldlr*) which lead to spontaneous development of atherosclerosis. E2 prevents both initiation and progression of atherosclerotic plaque development in these models. Using subcutaneous implanted E2-releasing pellets to achieve physiologic serum levels, atherosclerotic plaques did not progress beyond the fatty streak stage in apolipoprotein E-deficient mice. (Elhage et al, 1997) Similarly, E2 has been shown to reduce atherosclerotic lesion size in male *ApoE*^{-/-} mice. (Tse et al, 1999) Treatment of minimally-oxidized LDL with E2 leads to decreased cytotoxicity in cultured endothelial cells. (Negre-Salvayre et al, 1993) E2 also inhibits LDL oxidation and decreases formation of cholesterol esters. (Huber et al, 1990)

E2 effects on lipoproteins and atherosclerosis are mediated by both ER α and ER β . When E2-treated mice that were deficient in ApoE alone were compared to mice that were deficient in both ApoE and ER α , E2 reduced atherosclerotic plaque size in *ApoE*^{-/-} mice by 80%. This effect was not seen in the *ApoE*^{-/-}, ER α ^{-/-} mice, indicating that ER α plays a critical role in prevention of atherosclerosis in this model. (Hodgin et al, 2001)

Clinical studies have shown reductions in serum lipoproteins following oral estrogen replacement therapy. One study randomized women to treatment with CEE (Premarin 0.625 mg) daily versus placebo. (Walsh et al, 1991) The estrogen treatment group had a 15% reduction in serum concentrations of LDL cholesterol and a 16% increase in high density lipoprotein (HDL) cholesterol. Triglyceride levels increased by 24%. These results were consistent across the age spectrum; even women in their 8th decade of life showed similar changes in serum cholesterol levels. Oral estrogens facilitate postprandial clearance of atherogenic lipoproteins and increase serum HDL levels, specifically HDL₂, which may play a major role in reduction of atherogenesis. Oral CEEs appear to increase HDL levels to a greater degree than oral E2. Triglyceride levels are increased with administration of both oral CEE and oral E2, though to a lesser extent by oral E2.

Transdermal E2 formulations also decrease LDL levels, but to a lesser extent than oral preparations. (Stevenson et al 2009) Transdermal estrogens have not been shown to alter postprandial lipoprotein clearance or circulating HDL levels, but may lower triglyceride levels. (Godsland et al, 2001)

4.4 Estrogen effects on C-reactive protein

C-reactive protein (CRP) is an acute phase reactant that has been shown to be both a marker and a mediator of vascular disease. There is an E2-dependent sexual dimorphism in expression of human CRP in experimental models, i.e., the transgenic mouse expressing human CRP (CRPtg) (Szalai et al 1997, 1998, 2002) and in some human populations (Yamada et al, 2001). E2 treatment of male CRPtg can lower baseline CRP levels and removal of E2 can restore its high baseline expression. (Szalai et al, 1998) In postmenopausal women, oral CEE increases baseline CRP levels, but low dose oral or transdermal E2 supplementation does not affect CRP. (Cushman et al, 1999; Vongpatanasin et al, 2003; Lakoski et al, 2005; Mosca et al, 2004) This HRT-induced CRP increase occurs without a significant change in IL-6 or TNF- α , major regulators of CRP under inflammatory conditions, suggesting that the effects of menopausal hormones on CRP do not reflect a generalized inflammatory state. (Vongpatanasin et al, 2003; Mosca et al, 2004) Data from the WHI and the Women's Health Study have demonstrated that CRP predicts CVD risk in post-menopausal women independent of HRT. (Kurtz et al, 2011) HRT use had less predictive value than CRP levels in these studies. Thus, the clinical significance of hormone-related changes in circulating CRP levels remains uncertain.

5. Estrogen effects on inflammation and vascular pathology

5.1 Estrogen modulates pro-inflammatory mediator expression after vascular injury

Inflammation plays a critical role in the pathogenesis of atherosclerosis and subsequent CVD. (Hansson et al, 2005) The process is initiated by activation of endothelial cells due to deposition of lipoproteins, pressure overload, and/or hyperglycemia, leading to increased expression of adhesion molecules (including selectin, vascular cell adhesion molecule 1 [VCAM-1], and intercellular adhesion molecule 1 [ICAM-1]). These molecules cause circulating leukocytes to bind to vascular endothelial cells and release pro-inflammatory cytokines and growth factors. The bound leukocytes then infiltrate the vascular smooth muscle cells layer, leading to a cascade of cytokine secretion, further contributing to the local inflammatory environment within the vessel.

Based on extensive studies using the rat carotid injury model, E2 has been shown to be a negative modulator of injury-induced vascular inflammation and neointima formation. (Bakir et al, 2000; Miller et al, 2004; Xing et al, 2004) There is a sexual dimorphism in the response to vascular injury, with males demonstrating increased neointima formation compared to females. (Chen et al 1996, 1998; Levine et al 1996; Miller et al, 2004) This sexual dimorphism is E2-dependent, based on evidence that physiologic levels of circulating E2 (40-60 pg/ml) decrease neointima formation in both male and female gonadectomized animals. Furthermore, addition of MPA, the progestin used in the Women's Health Initiative, opposes the effects of E2 on injury-induced vascular inflammation and neointima formation. (Levine et al, 1996)

E2 modulates the vascular response to injury by reducing local expression of inflammatory mediators and influx of leukocytes into balloon-injured carotid arteries of ovariectomized rats. (Miller et al, 2004; Xing et al, 2004) In particular, E2 decreases expression of cytokine-induced neutrophil chemoattractant (CINC-2 β), a chemoattractant for neutrophils and monocyte chemoattractant protein (MCP-1) in injured arteries. (Xing et al, 2004) This results in significant reductions in influx of these inflammatory leukocyte subtypes, limiting the injury response. (Figure 3)

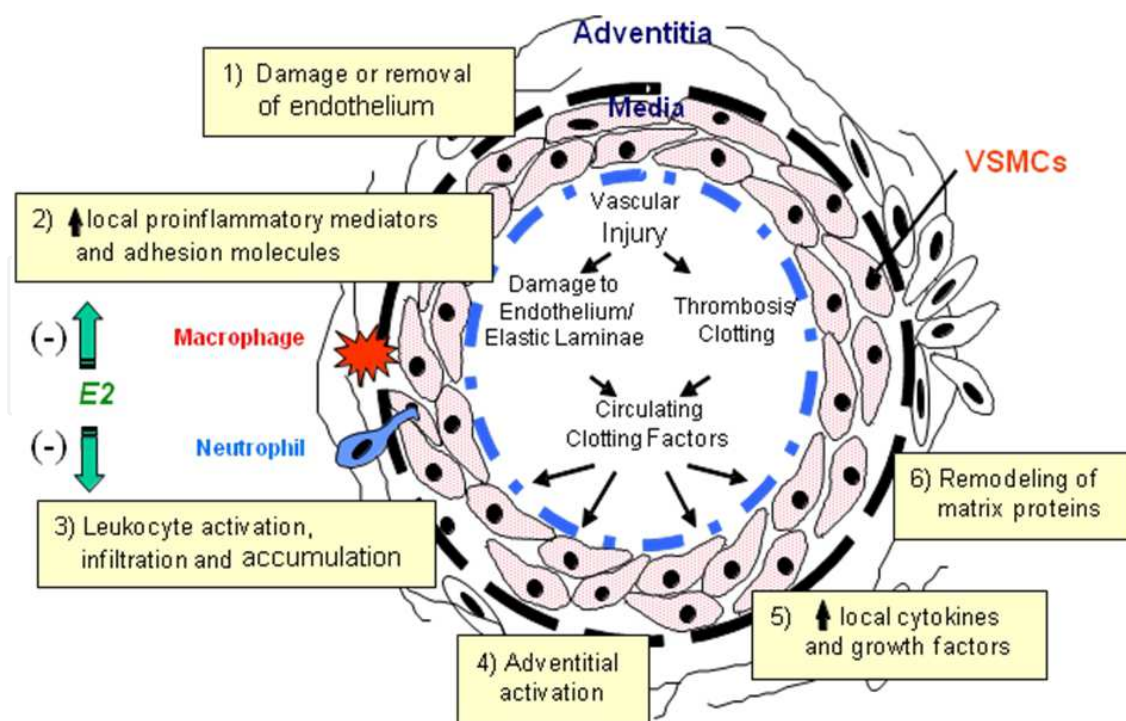


Fig. 3. E2 effects on the early vascular injury response. (Adapted from Xing et al, 2009)

5.2 The role of C-reactive protein in E2 modulation of vascular inflammation

E2 also exerts an anti-inflammatory and vasoprotective effect in injured arteries of CRP transgenic (CRPtg) mice. CRPtg mice carry a transgene containing the entire human *CRP* gene and its promoters while the mouse supplies all the required *trans*-acting factors. (Hage et al, 2008) Since in CRPtg mice, human CRP increases several hundred-fold during an acute phase response, analogous to the human condition, this model is convenient for the *in vivo* study of the biologic activities, including vascular effects, of human CRP. Using CRPtg mice, we and others have established that human CRP is a pathogenic mediator of cardiovascular disease. (Danenberg et al, 2003; Paul et al, 2004; Zhang et al, 2010; Nagai et al, 2011; Takahashi et al, 2010)

Using the carotid ligation model of acute vascular injury, we showed that young ovariectomized CRPtg mice develop twofold greater neointima formation than control non transgenic (NTG) mice and that there are extensive deposits of human CRP in the neointima of injured vessels of these animals in the absence of an increase in blood levels of the protein. (Kumar et al, 1997; Hage et al, 2010; Wang et al, 2005; Xing et al, 2008) These findings suggest that local expression of human CRP may exacerbate the adverse remodeling seen after acute arterial injury in the CRPtg model. To test the hypothesis that E2 can inhibit the vascular injury response attributed to human CRP, we treated ovariectomized CRPtg and control NTG mice with E2 prior to carotid ligation and observed that E2-treated CRPtg mice had a significant, ~85%, reduction in neointima formation compared to vehicle-treated CRPtg mice. The E2 effect was directionally similar but somewhat smaller in magnitude in control NTG mice. (Wang et al, 2005) Since the exaggerated vascular injury response in CRPtg mice is mediated by immunoglobulin G Fc receptors (FcγRs) on macrophages, (Xing et al, 2008) and since E2, via its interaction with ERs, can reduce inflammatory cytokine release from activated human macrophages by decreasing expression

of the excitatory Fc γ Rs on these cells, (Kramer et al, 2004, 2007) it is plausible that the vasoprotective effects of E2 against CRP-mediated vascular injury response in female mice are regulated by its modulation of macrophage phenotype in order to express less activating receptors (Fc γ RI and Fc γ RIII) and more inhibitory receptors (Fc γ RIIb).

5.3 Estrogen receptors and vascular inflammation

Studies in ER α - and ER β -deficient mice and in rats treated with pharmacologic antagonists of ERs have provided evidence that both ER subtypes contribute to the vasoprotective effects of E2 in the setting of acute injury. (Mori et al, 2000; Brouchet et al, 2001; Karas et al, 1999; Geraldles et al, 2003; Xing et al, 2007). The ER subtypes contribute to vasoprotection in a cell-specific manner. In porcine endothelial and vascular smooth muscle cells, E2 acts through inhibition of PDGF-BB-induced p38 and p42/44 mitogen-activated protein kinase (MAPK) phosphorylation to stimulate migration and proliferation. (Geraldles et al, 2003) Down-regulation of ER β , but not ER α , prevented the effects of E2 on smooth muscle cell migration and proliferation. In contrast, in porcine endothelial cells, down-regulation of ER α prevented E2-induced p38 and p42/44 MAPK activation, while down-regulation of ER β had no effect.

Administration of the ER β selective agonist DPN has been shown to result in dose-dependent attenuation of neointima formation induced by injury of the mouse femoral artery. (Krom et al, 2007) The ER α selective agonist PPT prevented neointima formation at low but not high concentrations in this study. In a subsequent study, MPP, an ER α selective antagonist, blocked the inhibitory effect of PPT on neointima formation, but did not block the effects of E2 or DPN. (Harrington et al, 2003) This suggests that E2 acts through a selective ER β pathway to attenuate neointima formation following restenosis in this mouse model.

The TNF- α -stimulated vascular smooth muscle cell has been used as an in-vitro model of the vascular injury response in order to examine cellular/molecular mechanisms of E2-induced vasoprotection. (Xing et al, 2007) E2 has been shown to attenuate TNF- α induced expression of pro-inflammatory mediators in rat aortic smooth muscle cells through ER β . (Xing et al, 2007) In this model, DPN reduced TNF- α -induced expression of the neutrophil cytokine CINC-2 β in a dose-dependent fashion, while PPT had no effect. The non-selective ER antagonist ICI-182,780 blocked the anti-inflammatory effects of both DPN and E2. Furthermore, both DPN and E2 reduced neutrophil chemotactic activity in TNF- α -treated rat aortic SMCs.

5.4 The role of aging in loss of estrogen-induced vasoprotection

In order to reconcile laboratory findings that E2 provides vascular protection with clinical trial results indicating harmful effects of E2 on the cardiovascular system, studies have been done in models comparing young versus aged animals. Results from one study showed opposing effects of E2 based on age: E2 increased neointima formation in balloon-injured carotid arteries of aged (+75%) versus young (10-12 weeks; -40%) ovariectomized rats. (Miller et al, 2007) The attenuating effect of E2 on inflammatory mediator expression and neutrophil and monocyte infiltration was lost in the injured arteries of aged rats. ER α and ER β expression was similar in both the young and aged animals. This laboratory evidence was the first of its kind to show that E2 exacerbates the vascular response to injury in aged animals. This seminal finding indicates that the protective effect of E2 is impaired following long periods of hormone deprivation, supporting the timing hypothesis. (Pinna et al, 2008)

The potential role of age-related alterations in ER signaling in these processes remains poorly understood and warrants further study.

6. Reproductive aging, sex hormones, and women's health

Reproductive aging is a function of decreased production of sex hormones by the ovaries. As a woman enters her fifth decade of life, depletion of remaining ovarian follicles occurs. Estrogen production by the ovaries begins to decrease, and women experience progressive loss of menstrual cyclicity. When total depletion of follicles occurs, menses cease, and the woman enters menopause, defined as the absence of menses for a 12-month period. The average age of menopause in the United States is 51 years. (Speroff and Fritz, 2005) Due to increasing lifespan, women can now expect to spend a significant portion of their lives in the postmenopausal state. This prolonged hypoestrogenism may have important consequences for quality of life, as well as various other health parameters, including cardiovascular function, bone health, and cognitive function.

6.1 Age- and sex-specific trends

CHD is rare in premenopausal women, but the incidence of myocardial infarction rises dramatically after menopause. Furthermore, women with premature ovarian failure or early natural menopause (≤ 44 years) have an associated increase in the risk of CVD. (Hu et al, 1999) (Mondul et al 2005) These observations led to the belief that menopause itself is a risk factor for CHD. However, the relationship between menopause, age and CHD is complex and it is not clear that menopause per se is a risk factor for CHD. It is important to recognize that women who develop CHD after menopause have more CHD risk factors (dyslipidemia, family history, hypertension, tobacco use, and diabetes mellitus) compared to postmenopausal women who remain free of disease. Currently available data from randomized controlled trials, e.g., WHI and HERS, do not indicate that HRT is useful in the primary or secondary prevention of CHD. However, a growing body of evidence suggests that initiation of treatment with different HRT preparations in the perimenopausal period may have beneficial effects on the vasculature that may delay the progression of CVD and prevent ischemic events.

6.2 Types and routes of administration of postmenopausal estrogen replacement therapy

ERT is only indicated for the treatment of moderate to severe menopausal symptoms, specifically vasomotor symptoms (eg. hot flashes). Contraindications to ERT include known CHD, breast cancer, a previous venous thromboembolic event or stroke, active liver disease, or high risk for these conditions. ERT should be initiated as close to the time of menopause as possible, typically beginning in the late forties to early fifties. Initiation of therapy beyond age 59 is controversial due to increased risk of CHD events. Most physicians now agree that the benefit of estrogen treatment in healthy, early menopausal women, using the lowest dose and shortest duration of therapy, outweigh the risks of treatment.

Systemic ERT can be given orally or non-orally in the form of transdermal patches and topical creams, gels, and mists. Estrogen can also be given vaginally via tablets, topical formulations and vaginal rings. However, vaginal therapy is only indicated for the treatment of vaginal atrophy and not for systemic/vasomotor symptoms. Assuming that equivalent doses of replacement estrogen are given, the different routes of administration

are equivalent in ameliorating menopausal symptoms. Among the oral estrogens, E2 is considered to be the most potent estrogen and estrone is reported to be 50-70% less active. Estriol is the least potent of the three estrogens, with a potency one-tenth that of E2.

While both oral and transdermal estrogens are absorbed systemically, oral estrogens are unique in that they undergo the "first-pass effect" in the liver. Intestinal absorption of estrogens leads to high concentrations of hormone in the portal vein, stimulating hepatic production of thyroxine-binding globulin, corticosteroid-binding globulin, SHBG, triglycerides, HDL, triglycerides, and clotting factors. Transdermal administration of estrogen does not have this effect and there is no resulting increased hepatic production of the above proteins.

Multiple oral estrogen preparations are available, including CEE, E2, esterified estrogen, and conjugated synthetic estrogens. (Table 1)

Estrogen Replacement Therapy					
Drug	Company	Dose	Company	Drug	Dose
<i>Oral Therapy</i>			<i>Transdermal Therapy</i>		
Estradiol			Estradiol		
Estrace	Warner Chilcot	0.5, 1, 2 mg	<i>Patches</i>		
Gynodiol	Firding	0.5, 1, 1.5, 2 mg	Alora	Watson	0.025, 0.05, 0.075, 0.1 mg/d
Conjugated equine estrogens			Climara	Berlax	0.025, 0.05, 0.06, 0.075, 0.1 mg/d
Premarin	Wyeth-Ayerst	0.3, 0.45, 0.625, 0.9, 1.25 mg	Esclim	Women First	0.025, 0.0375, 0.05, 0.075, 0.1 mg/d
Esterified Estrogens			Estraderm	Novartis	0.05, 0.1 mg/d
Menest	Monarch	0.3, 0.625, 1.25, 2.5 mg	Vivelle	Novartis	0.025, 0.0375, 0.05, 0.075, 0.1 mg/d
Ogen	Pharmacia	0.75, 1.5, 3 mg	Menostar	Bayer	0.014 mg/d
Ortho-Est	Women First Healthcase	0.5, 1.5, mg	<i>Gel</i>		
Conjugated synthetic estrogens			EstroGel	Solvay	0.75 mg/pump
Cenestin	Elan	0.3, 0.45, 0.625, 0.9, 1.25 mg	<i>Emulsions</i>		
Enjuvia	Elan	0.625, 1.25 mg	Estrasorb	Novavax	0.025 mg/pouch
<i>Vaginal Therapy</i>			Divigel	Upsher-Smith	0.25, 0.5, 1 mg/pouch
Estradiol			Elestrin	Kenwood	0.52 mg/pump

Rings			Spray		
Estring	Pharmacia	0.0075 mg/day	EvaMist	KV pharmaceutical	1.5 mg/spray
Femring	Warner-Chilcott	0.05 mg/day			
Tablet					
Vagifem	Novo Nordisk	0.025 mg/tablet			
Cream					
Estradiol					
Estrace	Warner-Chilcot	0.1 mg/gram			
Conjugated equine estrogen					
Premarin	Wyeth-Ayerst	0.625 mg/gram			

Table 1. Available Estrogen Formulations (Modified from Martin and Barbieri, 2011)

CEE is one of the most commonly used preparations and, derived from mare urine, is composed of up to 10 different estrogenic compounds, predominantly the sodium sulfated conjugates of estrone. (Lyman GW 1982) The metabolism of CEE is a complex and still poorly understood process which occurs in the liver. After oral ingestion of CEEs, the compounds are rapidly absorbed by the gastrointestinal tract, then may become conjugated by hepatocytes or excreted in the feces. (Pan CC, 1985) Following oral intake of CEEs, mean serum estrone levels (152 pg/mL) are far higher than estradiol levels (31 pg/mL). (Powers MS et al 1985) However, the estrone component is largely inactive because it is albumin-bound. The clinical response to CEE is hypothesized to be mediated through a mechanism involving conversion of circulating, bound estrone to E2 in the liver. (Barnes RB et al 1987)

E2 is another commonly prescribed oral form of postmenopausal ERT. Native E2 is poorly absorbed; therefore it is manufactured in micronized, sulfated, and esterified forms to improve absorption. (Krantz JC et al 1958) Similar to metabolism of CEE, the majority of E2 is converted to estrone. However, following oral administration of E2, mean circulating levels of estrone (200 pg/mL) and E2 (50 pg/mL) are higher compared to serum levels following ingestion of CEE when equivalent doses are given. (Lobo RA and Cassidenti DL 1992) E2 also induces hepatic production of proteins, but this effect is much less than that of CEEs. (Maschak CA et al 1982).

Esterified estrogens result in serum E2 and estrone levels similar to those seen with CEEs. Synthetic conjugated estrogens are derived from plant sources. They are similar but not identical to CEEs and contain fewer molecular forms of estrogen. (Lobo et al, 2000)

6.3 Types and routes of administration of progesterone replacement therapy

Progesterone is indicated in addition to estrogen as part of a HRT regimen in postmenopausal women with an intact uterus (who have not undergone hysterectomy). Progesterone opposes the effects of estrogen on the endometrial lining and prevents development of endometrial hyperplasia and malignancy which occur in women treated with unopposed estrogen. Both natural and synthetic progestins are available. (Table 2)

Progesterone Formulations			
Generic Name	Brand Name	Company	Dose
Oral Therapy			
Micronized Progesterone	Prometrium	Abbott	100, 200 mg
Medroxyprogesterone Acetate	Provera	Pfizer	2.5, 5, 10 mg
Norethindrone acetate	Aygestin	Teva Pharmaceuticals	2.5, 5, 10 mg
Vaginal Therapy			
Progesterone Cream	Crinone	Columbia Laboratories	90 mg/applicator
Progesterone Gel	Prochieve	Columbia Laboratories	90 mg/applicator
Intrauterine Device (IUD)			
Levonorgestrel IUD	Mirena	Bayer	52 mg/5 yrs
Combination Estrogen-Progesterone Formulations			
Oral Therapy			
CEE/medroxyprogesterone	Prempro	Wyeth	0.3/1.5, 0.45/1.5, 0.625/2.5, 0.625/5 mg
Estradiol/norgestimate	Prefest	Duramed	1/0.9 mg
Estradiol/norethindrone acetate	Activella	Novo Nordisk	1/0.5 mg
Ethinyl estradiol/norethindrone	FemHRT	Warner-Chilcot	5 mcg/1mg
Estradiol/drosperinone	Angeliq	Berlex	1/0.5 mg
Transdermal Patches			
Estradiol/norethindrone	Combi-Patch	Novartis	0.05/0.14, 0.05/0.25 mg
Estradiol/levonorgestrel	Climara Pro	Berlex	0.045/0.015 mg

Table 2. Available Progesterone Preparations. (Modified from Martin and Barbieri, 2011)

Micronized progesterone is the major natural progesterone available, and while it has been less well studied than MPA, it appears to be similar in efficacy and is widely prescribed. Synthetic progestins, including MPA, norgestrel, and norethindrone acetate, appear to increase hepatic lipase activity and attenuate the beneficial effects of estrogen on HDL levels (Stevenson 2009), while natural progesterone appears to have no adverse effect on HDL. MPA also opposes the NO-dependent vasodilator effect of E₂, while natural progesterone was found to have no effect. (Williams AK et al 1994)

7. Clinical research in hormone replacement therapy

7.1 Observational studies

The slope of the age-related rise in incidence of CVD in women increases in the post-menopausal period, suggesting that withdrawal of ovarian hormones, particularly E₂, has an adverse effect on cardiovascular health. (Lloyd-Jones et al, 2010) This increase is thought

to be a consequence of the loss of the multiple protective effects of E2 on the vascular system. Multiple observational studies have suggested that HRT may protect against CVD in postmenopausal women. In a meta-analysis of 16 prospective observational trials, the relative risk of CVD for postmenopausal women who ever used any form of estrogen vs. those who had never used estrogen was 0.70 (95% CI, 0.63-0.77). (Grodstein et al, 1995) The relative risk in current users, calculated from 6 prospective studies, was even more impressive at 0.55 (95% CI, 0.44-0.70). In the Nurses' Health Study, which followed more than 70,000 postmenopausal women for 20 years, the risk for major coronary events was lower among current users of HRT compared with never-users (multi-variate adjusted relative risk, 0.61 [95% CI, 0.52-0.71]). (Grodstein et al, 2000) Buoyed by observational studies suggesting that HRT, including various E2 preparations with or without a progestin (most commonly a synthetic one), reduced CVD risk by ~50%. (Psaty et al, 1994) HRT use increased dramatically during the 2 decades prior to the publication of the WHI. It is estimated that annual hormone therapy prescriptions increased from 58 million in 1995 to 90 million in 1999, representing ~15 million women per year. (Hersh et al, 2004) This rate remained stable until 2002, but after the publication of WHI and other randomized controlled trials that showed no benefit of HRT, fell sharply by 66% in a single year. Many of the studies that prompted the upswing in postmenopausal HRT suffered from the limitations of discordance of the two treatment groups: women who take HRT are on average better educated, have higher incomes and better access to health care and are healthier even before starting therapy. (Barrett-Connor et al, 1989; Matthews et al, 1996) In a meta-analysis that adjusted for socioeconomic status and other risk factors, HRT was not associated with CVD risk reduction. (Humphrey et al, 2002)

7.2 Clinical trials

Publication of the estrogen plus progestin clinical trial component of the Women's Health Initiative (WHI) (Rossouw et al., 2002; Manson et al., 2003) initially sounded a death knell for hormone use in post-menopausal women. This placebo-controlled trial of HRT (CEE 0.625 mg/day plus MPA 2.5 mg/day) in 16,608 post-menopausal women found significant increases in the risk of CHD, stroke, venous thromboembolism and invasive breast cancer in the HRT group. The reductions in colorectal cancer and hip fracture seen with HRT did not balance these increased CVD and cancer risks, and publication of the WHI results stimulated consensus panels to recommend against the use of HRT for chronic disease prevention in post-menopausal women (Mosca et al., 2004). Based on the widely publicized findings of harm in the estrogen plus progestin (E+P) trial of the WHI and a major secondary prevention study that used the same hormone regimen, the Heart and Estrogen/Progestin Replacement Study (HERS) (Hulley et al., 1998; Grady et al., 2002), prescribing of HRT fell drastically. (Hersh et al., 2004) Transdermal hormone preparations were less affected, and transvaginal and low-dose preparations gained somewhat, reflecting caution in the use of the full-dose oral regimens that had been used in WHI and HERS.

Attempts to explain the unanticipated deleterious effects of HRT gave consideration to whether the formulation, dose and route of administration of HRT might play a role (Dubey et al., 2004; Turgeon et al., 2004; Phillips & Langer, 2005). In particular, the progestin MPA was identified as having potential deleterious effects on the vasculature. Pre-clinical studies had shown that MPA negates the vasoprotective and anti-inflammatory effects of E2 in the setting of acute vascular injury (Levine et al., 1996; Oparil et al., 1997; Xing et al., 2004; Miller

et al., 2004) and in vitro studies found that MPA signals differently from native progesterone in endothelial cells (Simoncini et al., 2004). The surprising outcomes of the estrogen-alone (EA) component of WHI (WHI SC, 2004) added further evidence that MPA might be a problem and that unopposed estrogen benefits younger post-menopausal women. This trial, which was stopped early, showed no significant effect of unopposed CEE on the primary CHD outcome and a surprising tendency for benefit in the primary safety (invasive breast cancer) outcome.

7.3 The timing hypothesis

The advanced age (63 years in WHI, 67 years in HERS) and long period of hormone deprivation prior to starting HRT may account for deleterious outcomes of hormone treatment in WHI and HERS. Based on a review of pre-clinical studies, as well as observational studies and clinical trials in women, including those with intermediate endpoints and CVD outcomes, the “timing hypothesis” was developed (Phillips & Langer, 2005). The timing hypothesis states that the effects of HRT on the vasculature are dependent on the time of initiation of treatment. The timing hypothesis predicts that HRT initiated at the time of or prior to menopause should produce a decrease in CHD over time, while HRT begun years after menopause should produce an increase in CHD events shortly after therapy is begun, followed by later benefit. This hypothesis attributes the complex CHD responses to HRT in human trials to a combination of early erosion/rupture of ‘vulnerable’ coronary plaque, which is made worse by HRT; long-term reduction in plaque formation, which is improved by HRT; and modulation of the vasoprotective actions of estrogens by systemic progestins.

Indirect support for the timing hypothesis has come from the report of final results from the EA trial in WHI, which included detailed analyses of primary and secondary coronary outcomes and subgroup analyses of participants by age and years since hysterectomy with no menopausal hormone therapy (Hsia J, et al). During the active intervention period, 201 coronary events were confirmed among women assigned to CEE compared with 217 events among women assigned to placebo (HR=0.95%; 95% CI 0.79-1.16). Among women aged 50-59 years at baseline, the HR for the primary outcome (nonfatal myocardial infarction or coronary death) was 0.63 (95% CI 0.36-1.08). In that younger age group, coronary revascularization was less frequent among women assigned to CEE (HR=0.55; 95% CI 0.35-0.86), as were several composite outcomes. Further analyses of the E+P arm of the WHI demonstrated a non-significant trend towards cardioprotection in women who began HRT less than 10 years after menopause (HR = 0.89; 95% CI 0.5-1.5), while women who initiated HRT more than 20 years after menopause had a significantly elevated risk of coronary events (HR = 1.71; 95% CI, 1.1-2.5). (Manson et al, 2003) When the EA and E+P arms from the WHI were combined, a similar trend was seen. (Rossouw et al, 2007)

Another consideration in the relationship between HRT and CVD risk is the duration of HRT. A recent post-hoc analysis of the E+P trial in WHI showed that in women less than 10 years since menopause, HRT resulted in a slightly lower event-free survival rate during the first 5 years of therapy compared to placebo; however, at 6 years, the two curves crossed each other and showed a non-significant trend towards a higher rate of event-free survival in the group using HRT. (Toh et al, 2010) Further analysis of women less than 10 years since menopause in the WHI E+P arm showed an increased risk in the first 2 years of HRT, followed by a decreased risk in the next 2 years, and an overall risk reduction over 8 years.

(Toh et al, 2010). Similar results were seen in the EA arm of the WHI, with a significant decrease in CHD risk after 6 years of CEE alone compared to placebo. (Harman et al, 2011) Among women in the EA arm of the WHI followed up over 10.7 years, there was no difference in CHD risk in those using CEE for a median of 5.9 years compared to placebo at the end of the active treatment period, or overall. (LaCroix et al, 2011) In the post-intervention follow-up period, the annualized rate for CHD in the EA arm was 0.64% compared to 0.67% in the placebo group (HR 0.97, 95% CI, 0.75-1.25). Health outcomes, including CHD, were more favorable for younger women compared to older women ($P=0.05$ for interaction). These findings support the current clinical recommendations to treat postmenopausal women with HRT for the "shortest possible duration" and may lead to more individualized management.

The WHI was limited by use of only one type of ERT (CEE), by inclusion of women who initiated HRT late after many years of ovarian hormone deprivation, and by exclusion of women who were experiencing menopausal symptoms. Ongoing clinical trials are addressing these deficiencies by examining the timing hypothesis in perimenopausal women. The Kronos Early Estrogen Prevention Study (KEEPS) is a prospective, randomized, double-blind study of 900 healthy perimenopausal women aged 45-54 with menopausal symptoms. (Harman et al., 2005) The main hypotheses are 1) HRT initiated early in menopause (before development of atherosclerotic lesions) will prevent progression of atherosclerotic lesions, and 2) both oral CEE and transdermal E2 will be similarly efficacious. Participants were randomized to oral CEE and a placebo patch, oral placebo and a transdermal patch containing E₂, or placebo in both pill and patch. The primary endpoints of KEEPS are carotid intimal medial thickness by ultrasound and the progression of coronary calcium by electron beam tomography, surrogates for CVD. Another ongoing prospective, randomized, controlled trial, the Early versus Late Intervention Trial with Estradiol (ELITE) randomized 643 women who were less than 6 years or more than 10 years since menopause to receive oral E2 versus placebo. (clinicaltrials.gov NCT00114517; Hodis and Mack, 2011) The primary endpoint is rate of change of carotid artery intima-media thickness. These two prospective studies will provide much-needed information regarding the timing hypothesis and use of HRT in reducing CVD risk.

7.4 Oral versus transdermal HRT

To date, few studies have examined the difference in CHD outcomes between postmenopausal women treated with oral versus transdermal therapy. The one existing trial in the literature suggests no difference in CHD outcomes with regard to route. (Clarke SC 2002) This study examined transdermal E2 with or without transdermal norethindrone acetate, and found similar CHD outcomes to the WHI. The literature indicates that dose may be more important than route.

8. Conclusions

Importantly, cellular and molecular studies are urgently needed to elucidate the differential effects of HRT and its components on young, healthy arteries and on older, diseased arteries. Emerging evidence suggests that HRT administered to young healthy women has anti-inflammatory and vasodilator effects that tend to lower blood pressure and slow the progression of atherosclerotic lesions, while the same HRT preparation administered to

older women, particularly those with established vascular disease, has a proinflammatory effect, perhaps leading to atherosclerotic plaque instability and neovascularization (Störk et al., 2004; Mendelsohn & Karas, 2005). The mechanisms of these altered vascular responses are not fully understood, but may relate to age-related deterioration in ER expression and signaling. Recent studies of the effects of HRT on blood pressure and vascular function support the age-dependence of the action of HRT on the vasculature. Beneficial effects of HRT appear to be realized only in younger, perimenopausal women in whom hormone response systems remain intact. However, further study of the timing, dose, duration, and route of administration of HRT in postmenopausal women may be informative.

9. References

- Anderson, G.L., Limacher, M., Assaf, A.R., Bassford, T., Beresford, S.A., Black, H., Bonds, D., Brunner, R., Brzyski, R., Caan, B., Chlebowski, R., Curb, D., Gass, M., Hays, J., Heiss, G., Hendrix, S., Howard, B.V., Hsia, J., Hubbell, A., Jackson, R., Johnson, K.C., Judd, H., Kotchen, J.M., Kuller, L., LaCroix, A.Z., Lane, D., Langer, R.D., Lasser, N., Lewis, C.E., Manson, J., Margolis, K., Ockene, J., O'Sullivan, M.J., Phillips, L., Prentice, R.L., Ritenbaugh, C., Robbins, J., Rossouw, J.E., Sarto, G., Stefanick, M.L., Van Horn, L., Wactawski-Wende, J., Wallace, R., & Wassertheil-Smoller, S. Women's Health Initiative Steering Committee. (2004). Effects of conjugated equine estrogen in postmenopausal women with hysterectomy: the Women's Health Initiative randomized controlled trial. *Journal of the American Medical Association*, Vol. 291, No. 14, (April 2004), pp. 1701-1712, ISSN 0098-7484.
- Andersson, C., Lydrup, M., Ferno, M., Idvall, I., Gustafson, J. & Nilsson B. (2001). Immunocytochemical demonstration of oestrogen receptor beta in blood vessels of the femal rat. *Journal of Endocrinology*, Vol.169, No. 2, (May 2001), pp. 241-247, ISSN 1479-6805.
- Bakir, S., Mori T, Durand J, Chen YF, Thompson JA, & Oparil S. (2000). Estrogen-induced vasoprotection is estrogen-receptor dependent: evidence from the balloon-injured rat carotid artery model. *Circulation*, Vol.101, No.20, (May 2000), pp. 2342-2344, ISSN: 0009-7322.
- Bar, J., Tepper, R., Fuchs, J., Pardo, Y., Goldberger, S., & Ovadia, J. (1993). The effect of estrogen replacement therapy on platelet aggregation and adenosine triphosphate release in postmenopausal women. *Obstetrics & Gynecology*, Vol.81, No.2, (Feb 1993), pp. 261-264, ISSN 1873-233X.
- Bar, J., Lahav, J., Hod, M., Ben-Rafael, Z., Weinberger, I., & Brosens, J. (2000). Regulation of platelet aggregation and adenosine triphosphate release in vitro by 17 β -estradiol and medroxyprogesterone acetate in postmenopausal women. *Journal of Thrombosis and Haemostasis*, Vol.84, No.4, (Oct 2000), pp. 695-700, ISSN 0340-6245.
- Barnes, R.B., Lobo, R.A. (1987). Pharmacology of Estrogens, In: Menopause: Physiology and Pharmacology, Mishell, D.R., JR, pp. 301-315, Year Book Medical Publishers, Inc., ISBN 0815159145, Chicago, IL.
- Barrett-Connor, E., Wingard, D., & Criqui, M. (1989). Postmenopausal estrogen use and heart disease risk factors in the 1980s. Rancho bernardo, calif, revisited. *Journal of the American Medical Association*, Vol. 261, No. 14, (April 1989), pp. 2095-2100, ISSN 0098-7484.

- Brouchet, L., Krust, A., Dupont, S., Chambon, P., Bayard, F., & Arnal, J. (2001). Estradiol accelerates reendothelialization in mouse carotid artery through estrogen receptor- α but not estrogen receptor- β . *Circulation*, Vol.103, No.3 (January 2001), pp. 423-428, ISSN 0009-7322.
- Butkevich, A., Abraham, C., & Phillips, R.A. (2000). Hormone replacement therapy and 24-hour blood pressure profile of postmenopausal women. *American Journal of Hypertension*, Vol.13, No.9, (September 2000), pp.1039-1041, ISSN 0895-7061.
- Cagnacci, A., Rovati, L., Zanni, A., Malmusi, S., Facchinetti, F., & Volpe, A. (1999). Physiological doses of estradiol decrease nocturnal blood pressure in normotensive postmenopausal women. *American Journal of Physiology*, Vol. 276, No.4 Pt 2, (April 1999), pp.H1355-H1360, ISSN 0363-6135.
- Chambliss, K.L., Yuhanna, I.S., Mineo, C., Liu, P., German, Z., Sherman, T.S., Mendelsohn, M.E., Anderson, R.G.W., & Shaul, P.W. (2000) Estrogen receptor α and endothelial nitric oxide synthase are organized into a functional signaling module in caveolae. *Circulation Research*, Vol.87, No.11, (November 2000), pp. e44-e52, ISSN: 0009-7330.
- Chang, W.C., Nakao, J., Orimo, H., & Murota, S.I. (1980). Stimulation of prostaglandin cyclooxygenase and prostacyclin synthetase activities by estradiol in rat aortic smooth muscle cells. *Biochimica et Biophysica Acta*, Vol.620, No.3 (December 1980), pp. 472-482, ISSN 0006-3002.
- Chapman, A.B., Zamudio, S., Woodmansee, W., Merouani, A., Osorio, F., Johnson, A., Moore, L.G., Dahms, T., Coffin, C., Abraham, W.T., Schrier, R.W. Systemic and renal hemodynamic changes in the luteal phase of the menstrual cycle mimic early pregnancy. *American Journal of Physiology*, Vol. 273, No.5 Pt 2, (November 1997), pp.F777-F782, ISSN 0363-6135.
- Chen, F.P., Lee, N., Wang, C.H., Cherng W.J., & Soong, Y.K. (1998). Effects of hormone replacement therapy on cardiovascular risk factors in postmenopausal women. *Fertility and Sterility*, Vol.69, No.2, (February 1998), pp. 267-273, ISSN 0015-0282.
- Chen, S. J., Li, H., Durand, J., Oparil, S., & Chen, Y.F. (1996). Estrogen reduces myointimal proliferation after balloon injury of rat carotid artery. *Circulation*, Vol.93, No.3, (February 1996), pp. 577-584, ISSN 0009-7322.
- Chen, Y.F., & Oparil, S. (1998). Effects of sex steroids in vascular injury, In: *Endocrinology of Cardiovascular Function*, Levin, E.R., & Nadler, J.L., (Eds), pp.45-49, Kluwer Academic Publishers, ISBN 079238217X, Boston, Massachusetts.
- Chen, Z., Yuhanna, I.S., Galcheva-Gargova, Z., Karas, R.H., Mendelsohn, M.E. & Shaul, P.W. (1999). Estrogen receptor α mediates the nongenomic activation of endothelial nitric oxide synthase by estrogen. *The Journal of Clinical Investigation*, Vol.103, No.3, (February 1999), pp. 401-406, ISSN 0021-9738.
- Clarke, S.C., Kelleher, J., Lloyd-Jones, H., Slack, M., & Schofield, P.M. (2002). A study of hormone replacement therapy in postmenopausal women with ischaemic heart disease: the Papworth HRT Artherosclerosis Study. *British Journal of Obstetrics and Gynaecology*, Vol.109, No.9, (Sept 2002), pp. 1056-1062, ISSN 0306-5456.
- Collins, P. (2001). Vascular effect of hormones. *Maturitas*, Vol.38, No.1, (February 2001), pp. 45-51, ISSN 0378-5122.
- Cushman, M., Legault, C., Barrett-Connor, E., Stefanick, M.L., Kessler, C., Judd, H.L., Sakkinen, P.A., & Tracy, R.P. (1999). Effect of postmenopausal hormones on inflammation-sensitive proteins: The postmenopausal estrogen/progestin

- interventions (pepi) study. *Circulation*, Vol.100, No.7, (August 1999), pp. 717-722, ISSN 0009-7322.
- Danenberg, H.D., Szalai, A.J., Swaminathan, R.V., Peng, L., Chen, Z., Seifert, P., Fay, W.P., Simon, D.I., & Edelman, E.R. (2003). Increased thrombosis after arterial injury in human c-reactive protein-transgenic mice. *Circulation*, Vol.108, No.5, (August 2003), pp. 512-515, ISSN 0009-7322.
- Darling, G.M., Johns, J.A., McCloud, P.I., & Davis, S.R. (1997). Estrogen and progestin compared with simvastatin for hypercholesterolemia in postmenopausal women. *New England Journal of Medicine*, Vol.337, No.9, (August 1997), pp. 595-601, ISSN 1533-4406.
- Demiroglu, A., Baykal, C., Kiazli, S., & Ayhan A. (2001). Effects of hormone replacement on hemostasis in spontaneous menopause. *Menopause*, Vol.8, No.2, (March 2001), pp. 135-140, ISSN 1530-0374.
- Dennis, M.K., Burai, R., Ramesh, C., Petrie, W.K., Alcon, S.N., Nayak, T.K., Bologna, C.G., Leitao, A., Brailoiu, E., Deliu, E., Dun, N.J., Sklar, L.A., Hathaway, H.J., Arterburn, J.B., Oprea, T.I., & Prossnitz, E.R. (2009). In vivo effects of a GPR30 antagonist. *Nature Chemical Biology*, Vol.5, No.6, (June 2009), pp. 421-427, ISSN 1552-4469.
- Dubey, R.K., Imthurn, B., Zacharia, L.C., & Jackson, E.K. (2004). Hormone Replacement Therapy and Cardiovascular Disease: What Went Wrong and Where Do We Go From Here? *Hypertension*. Vol.44, No.6, (December 2004), pp. 789-795, ISSN 0194-911X.
- Dunne, F.P., Barry, D.G., Ferriss, J.B., Grealy, G., & Murphy, D. (1991). Changes in blood pressure during the normal menstrual cycle. *Clinical Science*, Vol.81, No.4, (October 1991), pp.515-518, ISSN 0143-5221.
- Elhage, R., Clamens, S., Reardon-Alulis, C., Getz, G.S., Fievet, C., Maret, A., Arnal J.F., & Bayard, F. (2000). Loss of atheroprotective effect of estradiol in immunodeficient mice. *Endocrinology*, Vol.141, No.1, (January 2000), pp. 462-465.
- Faraday, N., Goldschmidt-Clemont, P.J., & Bray, P.F. (1997). Gender differences in platelet GPIIb-IIIa activation. *Journal of Thrombosis and Haemostasis*, Vol.77, No.4, (April 1997), pp. 748-754, ISSN 0340-6245.
- Feng, D., Lindpaintner, K., Larson, M.G., Rao, V.S., O'Donnell, C.J., Lipinska, I., Schmitz, C., Sutherland, P.A., Silbershatz, H., D'Agostino, R.B., Muller, J.E., Myers, R.H., Levy, D., & Geoffrey H. Tofler, G.H. (1999). Increased Platelet Aggregability Associated With Platelet *GP3IIa* *PLA2* Polymorphism: The Framingham Offspring Study. *Arteriosclerosis, Thrombosis, and Vascular Biology*, Vol.19, No.4, (April 1999), pp. 1142-1147, ISSN 1524-4636.
- Filardo, E.J., Quinn, J.A., Bland, K.I., & Frackelton, A.R. (2000). Estrogen-induced activation of Erk-1 and Erk-2 requires the G protein-coupled receptor homolog, GPR30, and occurs via trans-activation of the epidermal growth factor receptor through release of HB-EGF. *Molecular Endocrinology*, Vol.14, No.10, (October 2000), pp. 1649-1660, ISSN 1944-9917.
- Geraldes, P., Sirois, M.G., & Tanguay, J.F. (2003). Specific contribution of estrogen receptors on mitogen-activated protein kinase pathways and vascular cell activation. *Circulation Research*, Vol.93, No.5, (September 2003), pp. 399-405, ISSN 0009-7330.
- Godsland, I.F. (2001). Effects of postmenopausal hormone replacement therapy on lipid, lipoprotein, and apolipoprotein (a) concentrations: analysis of studies published

- from 1974-2000. *Fertility and Sterility*, Vol.75, No.5, (May 2001), pp. 898-915, ISSN 0015-0282.
- Grady, D., Herrington, D., Bittner, V., Blumenthal, R., Davidson, M., Hlatky, M., Hsia, J., Hulley, S., Herd, A., Khan, S., Newby, L.K., Waters, D., Vittinghoff, E., & Wenger, N., for the HERS Research Group. (2002). Cardiovascular Disease Outcomes During 6.8 Years of Hormone Therapy: Heart and Estrogen/Progestin Replacement Study Follow-up (HERS II). *Journal of the American Medical Association*, Vol.288, No.1, (July 2002), pp. 49-57, ISSN 1017-1606.
- Grodstein, F. & Stampfer, M. (1995). The epidemiology of coronary heart disease and estrogen replacement in postmenopausal women. *Progress in Cardiovascular Disease*, Vol. 38, No. 3, (November-December 1995), pp. 199-210, ISSN 0033-0620.
- Grodstein, F., Stampfer, M., Manson, J., Colditz, G., Willett, W., Rosner, B., Speizer, F., & Hennekens, C. (1996). Postmenopausal estrogen and progestin use and the risk of cardiovascular disease. *The New England Journal of Medicine*, Vol. 335, No. 7, (August 1996), pp. 453-461, ISSN 0028-4793.
- Grodstein, F., Manson, J., Colditz, G., Willett, W., Speizer, F., & Stampfer, M. (2000). A prospective, observational study of postmenopausal hormone therapy and primary prevention of cardiovascular disease. *Annals of Internal Medicine*, Vol. 133, No. 12, (December 2000), pp. 933-941, ISSN 1539-3704.
- Haas, E., Meyer, M.R., Schurr, U., Bhattacharya, I, Minotti, R., Nguyen, H.H., Heigl, A., Lachat, M., Genoni, M., & Barton, M. (2007). Differential effects of 17beta-estradiol on function and expression of estrogen receptor alpha, estrogen receptor beta, and GPR30 in arteries and veins of patients with atherosclerosis. *Hypertension*, Vol.49, No.6 (June 2007), pp. 1358-1363, ISSN 0194-911X.
- Haas, E., Bhattacharya, I., Brailoiu, E., Damjanović, H., Brailoiu, G.C., Gao, X., Mueller-Guerre, L., Marjon, N.A., Gut, A., Minotti, R., Meyer, M.R., Amann, K., Ammann, E., Perez-Dominguez, A., Genoni, M., Clegg, D.J., Dun, N.J., Resta, T.C., Prossnitz, E.R., & Barton, M. (2009). Regulatory role of G protein-coupled estrogen receptor for vascular function and obesity. *Circulation Research*, Vol.104, No.3 (February 2009), pp. 288-291, ISSN 0009-7330.
- Hage, F.G., McCrory, M.A., & Szalai, A.J. (2008). C-reactive protein and cardiovascular disease: Lessons learned from studying genetically engineered mice, In: *C-Reactive Protein – New Research*, Nagasawa, S. (Ed), pp.83-116, Nova Publishers, ISBN 978-1-60692-237-8, New York.
- Hage, F.G., Oparil, S., Xing, D., Chen, Y.F., McCrory, M.A., & Szalai, A.J. (2010). C-reactive protein-mediated vascular injury requires complement. *Arteriosclerosis, Thrombosis, and Vascular Biology*, Vol.30, No.6, (June 2010), pp. 1189-1195, ISSN 1524-4636.
- Haines, C.J., James, A.E., Panesar, N.S., Ngai, T.J., Sahota, D.S., Jones, R.L., Chang, A.M. (1999). The effect of percutaneous oestriol on atheroma formation in ovariectomized cholesterol-fed rabbits. *Atherosclerosis*, Vol.143, No.2, (April 1999), pp. 369-375, ISSN 0021-9150.
- Han, G., Ma, H., Chintala, R., Miyake, K., Fulton, D.J., Barman, S.A., & White, R.E. (2007). Nongenomic, endothelium-independent effects of estrogen on human coronary smooth muscle are mediated by type I (neuronal) NOS and PI3-kinase-Akt signaling. *American Journal of Physiology - Heart and Circulatory Physiology*, Vol.293, No.1, (July 2007), pp. H314-H321, ISSN 1522-1539.

- Hansson, G.K. (2005). Inflammation, atherosclerosis, and coronary artery disease. *The New England Journal of Medicine*, Vol.352, No.16, (April 2005), pp. 1685-1695, ISSN 1533-4406.
- Harman, S.M., Brinton, E.A., Cedars, M., Lobo, R., Manson, J.E., Merriam, G.R., Miller, V.M., Naftolin, F., & Santoro, N. (2005). KEEPS: The Kronos Early Estrogen Prevention Study. *Climacteric*, Vol.8, No.1 (January 2005), pp. 3-12, ISSN 1473-0804.
- Harrington, W.R., Sheng, S., Barnett, D.H., Petz, L.N., Katzenellenbogen, J.A., & Katzenellenbogen, B.S. (2003). Activities of estrogen receptor alpha- and beta-selective ligands at diverse estrogen responsive gene sites mediating transactivation or transrepression. *Molecular and Cellular Endocrinology*, Vol.206, No.1-2, (August 2003), pp. 13-22, ISSN 1944-9917.
- Harman, S., Brinton, E., Cedars, M., Lobo, R., Manson, J., Merriam, G., Miller, V., Naftolin, F., & Santoro, N. (2005). KEEPS: The Kronos early estrogen prevention study. *Climacteric*, Vol. 8, No. 1, (March 2005), pp. 3-12, ISSN 1369-7137.
- Harman, S., Vittinghoff, E., Brinton, E., Budoff, M., Cedars, M., Lobo, R., Merriam, G., Miller, V., Naftolin, F., Pal, L., Santoro, N., Taylor, H., & Black, D. (2011). Timing and duration of menopausal hormone treatment may effect cardiovascular outcomes. *American Journal of Medicine*, Vol. 124, No. 3, (March 2011), pp. 199-205, ISSN 0002-9343.
- Harvey, P.J., Molloy, D., Upton, J., & Wing, L.M. (2001). Dose response effect of cyclical medroxyprogesterone on blood pressure in postmenopausal women. *Journal of Human Hypertension*, Vol.15, No.5, (May 2001), pp.313-321, ISSN 0950-9240.
- Hersh, A.L., Stefanick, M.L., & Stafford, R.S. (2004). National use of postmenopausal hormone therapy: annual trends and response to recent evidence. *Journal of the American Medical Association*, Vol.291, No.1, (January 2004), pp.47-53, ISSN 1017-1606.
- Hodgin, J.B., Kregge, J.H., Reddick, R.L., Korach, K.S., Smithies, O., Maeda, N. (2001). Estrogen receptor α is a major mediator of 17 β -estradiol's atheroprotective effects on lesion size in Apoe(-/-) mice. *The Journal of Clinical Investigation*, Vol.107, No.3, (February 2001), pp. 333-340, ISSN 0021-9738.
- Hodis, H & Mack, W. (2011). A "window of opportunity": the reduction of coronary heart disease and total mortality with menopausal therapies is age- and time-dependent. *Brain Research*, Vol. 1379, pp. 244-252, ISSN 0006-8993.
- Hsia, J., Laner, R., Manson, J., Kuller, L., Johnson, K., Crawford, S., Eaton, C., Kostis, J., Caralis, P., & Prentice, R. (2006). Conjugated equine estrogens and coronary heart disease:
- Hu, F.B., Grodstein, F., Hennekens, C.H., Colditz, G.A., Johnson, M., Manson, J.E., Rosner, B., & Stampfer, M.J. (1999). Age at natural menopause and risk of cardiovascular disease. *Archives of Internal Medicine*, Vol.159, No.10, (May 1999), pp. 1061-1066, ISSN 1538-3679.
- Huber, L.A., Scheffler, E., Poll, T., Ziegler, R., Dresel, H.A. (1990). 17 β estradiol inhibits LDL oxidation and cholesterol ester formation in cultured macrophages. *Free Radical Research Communications*, Vol.8, No.3, (n.d. 1990), pp. 167-173, ISSN 8755-0199.
- Hulley, S., Grady, D., Bush, T., Furberg, C., Herrington, D., Riggs, B., & Vittinghoff, E. For the Heart and Estrogen/progestin Replacement Study (HERS) Research Group. (1998). Original Contribution Randomized Trial of Estrogen Plus Progestin for Secondary Prevention of Coronary Heart Disease in Postmenopausal Women.

- Journal of the American Medical Association*, Vol.280, No.7, (August 1998), pp.605-613, ISSN 1017-1606.
- Humphrey, L., Chan, B., & Sox, H. (2002). Postmenopausal hormone replacement therapy and the primary prevention of cardiovascular disease. *Annals of Internal Medicine*, Vol. 137, No. 4, (August 2002), pp. 273-284, ISSN 1539-3704.
- Iafrazi, M.D., Karas, R.H., Aronovitz, M., Kim, S., Sullivan, T.R., Lubahn, D.B., O'Donnell, T.F, Korach, K.S., & Mendelsohn, M.E. (1997). Estrogen inhibits the vascular injury response in estrogen receptor alpha-deficient mice. *Nature Medicine*, Vol.3, No.5, (May 1997), pp. 545-548, ISSN 1078-8956.
- Jiang, C., Sarrel, P.M., Lindsay, D.C., Poole-Wilson, P.A., & Collins, P. (1991). Endothelium-independent relaxation of rabbit coronary artery by 17 β -oestradiol in vitro. *British Journal of Pharmacology*, Vol.104, No.4, (December 1991), pp. 1033-1037, ISSN 1476-5381.
- Karas, R.H., Hodgin, J.B., Kwoun, M., Krege, J.H., Aronovitz, M., Mackey, W., Gustafsson, J.A., Korach, K.S., Smithies, O., & Michael E. Mendelsohn, M.E. (1999). Estrogen inhibits the vascular injury response in estrogen receptor beta-deficient mice. *Proceedings of the National Academy of Sciences*, Vol.96, No.26, (December 1999), pp. 15133-15136, ISSN 1091-6490.
- Karpanou, E.A., Vyssoulis, G.P., Georgoudi, D.G., Toutouza, M.G., & Toutouzas, P.K. (1993). Ambulatory blood pressure changes in the menstrual cycle of hypertensive women. Significance of plasma renin activity values. *American Journal of Hypertension*, Vol.6, No.8, (August 1993), pp. 654-659, ISSN 0895-7061.
- Kelly, M.J., & Levin, E.R. (2001). Rapid actions of plasma membrane estrogen receptors. *Trends in Endocrinology and Metabolism*, Vol.12, No.4, (May 2001), pp. 152-156, ISSN 1043-2760.
- Khetawat, G., Faraday, N., Nealen, M.L., Vijayan, K.V., Bolton, E., Noga, S.J, & Bray, P.F. (2000). Human megocaryocytes and platelets contain the estrogen receptor beta and androgen receptor (AR): testosterone regulates AR expression. *Blood*, Vol.95, No.7 (April 2000), pp. 2289-2296, ISSN 1528-0020.
- Killam, A.P., Rosenfeld, C.R., Battaglia, F.C., Makowski, E.L., & Meschia, G. (1973). Effect of estrogens on the uterine blood flow of oophorectomized ewes. *American Journal of Obstetrics & Gynecology*, Vol.115, No.8, (April 1973), pp. 1045-1052, , ISSN 1097-6868.
- Kitazawa, T., Hamada, E., Kitazawa, K., & Gaznabi, A.K.M. (1997). Non-genomic mechanism of 17 β -oestradiol-induced inhibition of contraction in mammalian vascular smooth muscle. *Journal of Physiology*, Vol.499, No.Pt 2, (March 1997), pp. 497-511, ISSN 1469-7793.
- Kramer, P., Kramer, S., & Guan, G. (2004) 17 beta-estradiol regulates cytokine release through modulation of cd16 expression in monocytes and monocyte-derived macrophages. *Arthritis and Rheumatism*, Vol. 50, No. 6, (June 2004), pp. 1967-1975, ISSN 1529-0131.
- Kramer, P., Winger, V., & Kramer, S. (2007) 17beta-estradiol utilizes the estrogen receptor to regulate cd16 expression in monocytes. *Molecular and Cellular Endocrinology*, Vol. 279, No. 1-2, (December 2007), pp. 16-25, ISSN 0303-7207.
- Krantz, J.C., & Carr, C.J. (1958), *The Pharmacologic Principles of Medical Practice*, Williams & Wilkins, Baltimore, Maryland.

- Kristiansson, P., & Wang, J.X. (2001). Reproductive hormones and blood pressure during pregnancy. *Human Reproduction*, Vol.16, No.1, (January 2001), pp. 13-17, ISSN 0268-1161.
- Krom, Y., Pires, N., Jukema, J., de Vries, M., Frants, R., Havekes, L., van Dijk, K., & Quax P. (2007). Inhibition of neointima formation by local delivery of estrogen receptor alpha and beta specific agonists. *Cardiovascular Research*, Vol. 73, No. 1, (January 2006), pp. 217-226, ISSN 008-6363.
- Kroon, U.B., Tengborn, L., Rita, H., & Bäckstrom, A.C. (1997). The effects of transdermal oestradiol and oral progestogens on haemostasis variables. *British Journal of Obstetrics and Gynaecology*, Vol.104, No.s16, (November 1997), pp. 32-37.
- Kumar, A., Lindner, V. (1997). Remodeling with neointima formation in the mouse carotid artery after cessation of blood flow. *Arteriosclerosis, Thrombosis, and Vascular Biology*, Vol. 17, No. 10, (October 1997), pp. 2238-2244, ISSN 1049-8834.
- Kuehl, F.A., Ham, E.A., Zanetti, M.E., Sanford, C.H., Nicol, S.E., & Goldberg, N.D. (1974). Estrogen-related increases in uterine guanosine 3',5'-cyclic monophosphate levels. *Proceedings of the National Academy of Sciences*, Vol.71, No.5 (May 1974), pp. 1866-1870, ISSN 1091-6490.
- Kurtz, E., Ridker, P., Rose, L., Cook, N., Everett, B., Buring, J., & Rexrode, K. (2011). Oral postmenopausal hormone therapy, c-reactive protein, and cardiovascular outcomes. *Menopause*, Vol. 18, No. 1, (January 2011), pp. 23-29, ISSN 1072-3714.
- LaCroix, A., Chlebowski, R., Manson, J., Aragaki, A., Johnson, K., Martin, L., Margolis, K., Stefanick, M., Brzyski, R., Curb, J., Howard, B., Lewis, C., & Wactawski-Wende, J. (2011). Health outcomes after stopping conjugated equine estrogens among postmenopausal women with prior hysterectomy. *Journal of the American Medical Association*, Vol. 305, No. 13, (April 2011), pp. 1305-1314, ISSN 0098-7484.
- Lakoski, S.G., & Herrington, D.M. (2005). Effects of hormone therapy on c-reactive protein and il-6 in postmenopausal women: A review article. *Climacteric*, Vol.8, No.4, (January 2005), pp. 317-326, ISSN 1473-0804.
- Lerner, D.J. & Kannal, W.B. (1986). Patterns of coronary heart disease morbidity and mortality in the sexes: A 26-year follow-up of the Framingham population. *American Heart Journal*, Vol.111, No.2 (February 1986), pp.383-90, ISSN 0002-8703.
- Levine, R.L., Chen, S.J., Durand, J., Chen YF., & Oparil, S. (1996). Medroxyprogesterone Attenuates Estrogen-Mediated Inhibition of Neointima Formation After Balloon Injury of the Rat Carotid Artery. *Circulation*, Vol.94, No.9, (November 1996), pp. 2221-2227, ISSN 0009-7322.
- Lindoff, C., Peterson, F., Lecander, I., Martinsson, G., & Astedt, B. (1996). Transdermal estrogen replacement therapy: Beneficial effects on hemostatic risk factors for cardiovascular disease. *Maturitas*, Vol.24, No.1, (May 1996), pp. 43-50, ISSN 0378-5122.
- Lloyd-Jones, D., Adams, R., Brown, T., Carnethon, M., Dai, S., De Simone, G., Ferguson, T., Ford, E., Furie, K., Gillespie, C., Go, A., Greenlund, K., Haase, N., Hailpern, S., Ho, P., Howard, V., Kissela, B., Kittner, S., Lackland, D., Lisabeth, L., Marelli, A., McDermott, M., Meigs, J., Mozaffarian, D., Mussolino, M., Nichol, G., Roger, V., Rosamond, W., Sacco, R., Sorlie, P., Thom, T., Wasserthiel-Smoller, S., Wong, N., & Wylie-Rosett, J. (2010). Heart disease and stroke statistics--2010 update: A report

- from the american heart association. *Circulation*, Vol. 121, No. 12, (February 2010), pp. e46-e215, ISSN 0009-7322.
- Lobo, R.A., & Cassidenti, D.L. (1992). Pharmacokinetics of 17 β -estradiol. *Journal of Reproductive Medicine*, Vol.37, No.X, (MO 1992), pp. 77-84, ISSN 0024-7758.
- Lobo, R.A., Kelsey, J., & Marcus, R., (Eds). (2000). *Menopause: Biology and Pathobiology*, Academic Press, ISBN 0124537901, New York.
- Lyman, G.W., & Johnson, R.N. (1982). Assay for conjugated estrogens in tablets using fused-silica capillary gas chromatography. *Journal of Chromatography*, Vol.234, No.1, (Jan 1982), pp. 234-239, ISSN 0021-9673.
- Luster A. (1998) Chemokines- Chemotactic cytokines that mediate inflammation. *New England Journal of Medicine*, Vol. 338, No. 7, (February 1998), pp. 436-445, ISSN 0028-4793.
- Manson, J.E., Hsia, J., Johnson, K.C., Rossouw, J.E., Assaf, A., Lasser, N.L., Trevisan, M., Black, H., Heckbert, S.R., Detrano, R., Strickland, O.L., Wong, N.D., Crouse, J.R., Stein, E., & Cushman, M. For the Women's Health Initiative Investigators. (2003). Estrogen plus Progestin and the Risk of Coronary Heart Disease. *The New England Journal of Medicine*, Vol.349, No.6, (August 2003), pp.523-534, ISSN 1533-4406.
- Martin, K. & Barbieri, R. (2011). Preparations for postmenopausal hormone therapy, in: *UpToDate.com*, Accessed August 11, 2011, Available from: http://www.uptodate.com/contents/preparations-for-postmenopausal-hormone-therapy?source=search_result&selectedTitle=4%7E150
- Mashchak, C.A., Lobo, R.A., Dozono-Takano, R. Eggena, P., Nakamura, R.M., Brenner, P.F., & Mishell, D.R. (1982). Comparison of pharmacodynamic properties of various estrogen formulations. *American Journal of Obstetrics & Gynecology*, Vol.144, No.5, (November 1982), pp. 511-518, ISSN 1097-6868.
- Matthews, K., Kuller, L., Wing, R., Meilahn, E., & Plantinga, P. (1996). Prior to use of estrogen replacement therapy, are users healthier than nonusers? *American Journal of Epidemiology*, Vol. 143, No. 10, (May 1996), pp. 971-978, ISSN 0002-9262.
- Mendelsohn, M.E., & Karas, R.H. (2005). Molecular and Cellular Basis of Cardiovascular Gender Differences. *Science*, Vol.308, No.5728, (June 2005), pp. 1583-1587, ISSN 1095-9203.
- Mercuro, G., Zoncu, S., Pilia, I., Lao, A., Mellis, G.B., & Cherchi, A. (1997). Effects of acute administration of transdermal estrogen on postmenopausal women with systemic hypertension. *American Journal of Cardiology*, Vol.80, No.5, (September 1997), pp. 652-655, ISSN 0002-9149.
- Mercuro, G., Zoncu, S., Piano, D., Pilia, I., Lao, A., Mellis, G.B., & Cherchi, A. (1998). Estradiol-17 β reduces blood pressure and restores normal amplitude of the circadian blood pressure rhythm in postmenopausal hypertension. *American Journal of Hypertension*, Vol.11, No.8, (August 1998), pp. 909-913, ISSN 0895-7061.
- Miller, A.P., Feng, W., Xing, D., Weathington, N.M., Blalock, J.E., Chen, YF., & Oparil, S. (2004). Estrogen Modulates Inflammatory Mediator Expression and Neutrophil Chemotaxis in Injured Arteries. *Circulation*, Vol.110, No.12, (September 2004), pp. 1664-1669, ISSN 0009-7322.
- Miller, A., Xing, D., Feng, W., Fintel, M., Chen, Y., & Oparil, S. (2007). Aged rats lose vasoprotective and anti-inflammatory effects of estrogen in injured arteries. *Menopause*, Vol. 14, No. 2, (March-April 2007), pp. 251-260, ISSN 1072-3714.

- Miller, V.M., & Ducklers, S.P. (2008). Vascular actions of estrogens: functional implications. *Pharmacological Reviews*, Vol.60, No.2, (June 2008), pp. 210-241, ISSN 1521-0081.
- Mondul, A.M., Rodriguez, C., Jacobs, E.J., & Calle, E.E. (2005). Age at natural menopause and cause-specific mortality. *American Journal of Epidemiology*, Vol.162, No. 11, (December 2005), pp. 1089-1097, ISSN 0002-9262.
- Mori, T., Durand, J., Chen, Y., Thompson, J., Bakir, S., & Oparil, S. (2000). Effects of short-term estrogen treatment on the neointimal response to balloon injury of rat carotid artery. *American Journal of Cardiology*, Vol. 85, No. 10, (May 2000), pp. 1276-1279, ISSN 0002-9149.
- Mosca, L., Appel, L.J., Benjamin, E.J., Berra, K., Chandra-Strobos, N., Fabunmi, R.P., Grady, D., Haan, C.K., Hayes, S.N., Judelson, D.R., Keenan, N.L., McBride, P., Oparil, S., Ouyang, P., Oz, M.C., Mendelsohn, M.E., Pasternak, R.C., Pinn, V.W., Robertson, R.M., Schenck-Gustafsson, K., Sila, C.A., Smith, S.C., Sopko, G., Taylor, A.L., Walsh, B.W., Wenger, N.K., & Williams, C.L. (2004). Evidence-Based Guidelines for Cardiovascular Disease Prevention in Women. *Circulation*, Vol.109, No.5, (February 2004), pp. 672-693, ISSN 0009-7322.
- Mosca, L., Banka, C.L., Benjamin, E.J., Berra, K., Bushnell, C., Dolor, R.J., Ganiats, T.G., Gomes, A.S., Gornik, H.L., Gracia, C., Gulati, M., Haan, C.K., Judelson, D.R., Keenan, N., Kelepouris, E., Michos, E.N., Newby, L.K., Oparil, S., Ouyang, P., Oz, M.C., Petitti, D., Pinn, V.W., Redberg, R.F., Scott, R., Sherif, K., Smith, S.C., Sopko, G., Steinhorn, R.H., Stone, N.J., Taubert, K.A., Todd, B.A., Urbina, E., Wenger, N.K., & for the Expert Panel/Writing Group. (2007). Evidence-Based Guidelines for Cardiovascular Disease Prevention in Women: 2007 Update. *Circulation*, Vol.115, No.11, (March 2007), pp. 1481-1501, ISSN: 0009-7322.
- Nabulsi, A.A., Folsom, A.R., White, A., Patsch, W., Heiss, G., Wu, K.K., & Szklo, M. for the Atherosclerosis Risk in Communities Study Investigators. (1993). Association of hormone replacement therapy with various cardiovascular risk factors in postmenopausal women. *The New England Journal of Medicine*, Vol.328, No.15, (April 1993), pp. 1069-1075, ISSN 1533-4406.
- Nagai, T., Anzai, T., Kaneko, H., Mano, Y., Anzai, A., Maekawa, Y., Takahashi, T., Meguro, T., Yoshikawa, T., & Fukuda, K. (2011). C-reactive protein overexpression exacerbates pressure overload-induced cardiac remodeling through enhanced inflammatory response. *Hypertension*. Vol. 57, No. 2, (February 2011), pp. 208-215, ISSN 0194-911X.
- Nakano, Y., Oshima, T., Matsuura, H., Kajiyama, G., & Kambe, M. (1998). Effect of 17 β -estradiol on inhibition of platelet aggregation in vitro is mediated by an increase in NO synthesis. *Arteriosclerosis, Thrombosis, and Vascular Biology*, Vol.18, No.6, (June 1998), pp. 961-967, ISSN 1524-4636.
- Negre-Salveyre, A., Pieraggi, M.T., Mabile, L., & Salvayre, R. (1993). Protective effects of 17 β -estradiol against the cytotoxicity of minimally oxidized LDL to cultured bovine aortic endothelial cells. *Atherosclerosis*, Vol.99, No.2, (March 1993), pp. 209-217, ISSN 0021-9150.
- Oparil, S., Levine, R.L., Chen, S.J., Durand, J., & Chen, Y.F. (1997). Sexually Dimorphic Response of the Balloon-Injured Rat Carotid Artery to Hormone Treatment. *Circulation*, Vol.95, No.5, (March 1997), pp.1301-1307, ISSN 0009-7322.
- Oparil, S., Chen, S., Chen, Y., Durand, J., Allen, L., & Thompson, J. (1999) Estrogen attenuates the adventitial contribution to neointima formation in injured rat carotid

- arteries. *Cardiovascular Research*, Vol. 44, No. 3, (December 1999), pp. 608-614, ISSN 0008-6363.
- Ottosson, U.B., Johansson, B.G., & von Schoultz, B. (1985). Subfractions of high density lipoprotein cholesterol during estrogen replacement therapy: a comparison between progestogens and natural progesterone. *American Journal of Obstetrics & Gynecology*, Vol.151, No.6, (March 1985), pp. 746-750, ISSN 1097-6868.
- Pan, C.C., Woolever, C.A., & Bhavani, B.R. (1985). Transport of equine estrogens: binding of conjugated and unconjugated equine estrogens with human serum proteins. *Journal of Clinical Endocrinology and Metabolism*, Vol.61, No.3, (September 1985), pp. 499-507, ISSN 1945-7197.
- Paul, A., Ko, K., Li, L., Yechoor, V., McCrory, M., Szalai, A., & Chan, L. (2004). C-reactive protein accelerates the progression of atherosclerosis in apolipoprotein e-deficient mice. *Circulation*, Vol. 109, No. 5, (February 2004), pp. 647-655, ISSN 0009-7322.
- Pettersson, K., Delaunay, F., & Gustafsson, J.A. (2000). Estrogen receptor beta acts as a dominant regulator of estrogen signaling. *Oncogene*, Vol.19, No.43, (October 2000), pp. 4970-4978, ISSN 1476-5594.
- Phillips, L.S., & Langer, R.D. (2005). Postmenopausal hormone therapy: Critical reappraisal and a unified hypothesis. *Fertility and Sterility*, Vol.83, No.3 (March 2005), pp. 558-566, ISSN 0015-0282.
- Pinna, C., Cifnarella, A., Sanvito, P., Pelosi, V., & Bolego, C. (2008). Prolonged ovarian hormone deprivation impairs the protective vascular actions of estrogen receptor alpha agonists. *Hypertension*, Vol. 51, No. 4, (April 2010), pp. 1210-1217, ISSN 0194-911X.
- Powers, M.S., Schenkel, L., Darley, P.E., Good, W.R., Balestra, J.C., & Place, V.A. (1985). Pharmacokinetics and Pharmacodynamics of transdermal dosage forms of 17 β -estradiol: comparison with conventional oral estrogens used for hormone replacement. *American Journal of Obstetrics & Gynecology*, Vol.152, No.8, (August 1985), pp. 1099-1106, ISSN 1097-6868.
- Prossnitz, E.R., & Barton, M. (2009). Signaling, physiological functions and clinical relevance of the G protein-coupled estrogen receptor GPER. *Prostaglandins & Other Lipid Mediators*, Vol.89, No.3-4, (Sept 2009), pp. 89-97, ISSN 1098-8823.
- Psaty, B., Heckbert, S., Atkins, D., Lemaitre, R., Koepsell, T., Wahl, P., Siscovick, D., & Wagner, E. (1994). The risk of myocardial infarction associated with the combined use of estrogens and progestins in postmenopausal women. *Archives of Internal Medicine*, Vol. 154, No. 12, (June 1994), pp. 1333-1339, ISSN 1538-3679.
- Ranganath, L.R., Christofides, J., & Semple, M.J. (1996). Increase mean platelet volume after estrogen replacement therapy. *Annals of Chemical Biochemistry*, Vol.33, No.Pt 6, (November 1996), pp. 555-560, ISSN 0004-5632.
- Revankar, C.M., Cimino, D.F., Sklar, L.A., Arterburn, J.B., & Prossnitz, E.R. (2005). A transmembrane intracellular estrogen receptor mediates rapid cell signaling. *Science*, Vol.307, No.5715, (March 2005), pp. 1625-1630, ISSN 1095-9203.
- Roger, V.L., Go, A.S., Lloyd-Jones, D.M., Adams, R.J., Berry, J.D., Brown, T.D., Carnethon, M.R., Dai, S., de Simone, G., Ford, E.S., Fox, C.S., Fullerton, H.J., Gillespie, C., Greenlund, K.J., Hailpern, S.M., Heit, J.A., Ho, P.M., Howard, V.J., Kissela, B.M., Kittner, S.J., Lackland, D.T., Lichtman, J.H., Lisabeth, L.D., Makuc, D.M., Marcus, G.M., Marelli, A., Matchar, D.B., McDermott, M.M., Meigs, J.B., Moy, C.S., Mozaffarian, D., Mussolino, M.E., Nichol, G., Paynter, N.P., Rosamond, W.D.,

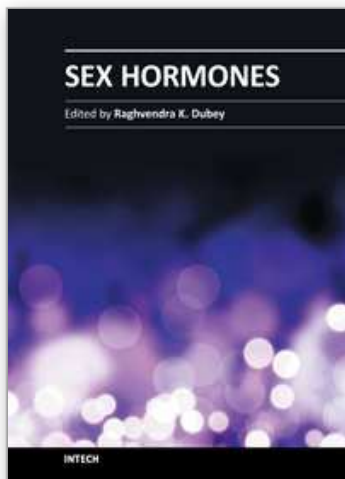
- Sorlie, P.D., Stafford, R.S., Turan, T.N., Turner, M.B., Wong, N.D., & Wylie-Rosett, J. (2011). Heart Disease and Stroke Statistics—2011 Update: A Report From the American Heart Association. *Circulation*, Vol.123, No.4, (February 2011), pp. e18-e209, ISSN: 0009-7322.
- Rosenfeld, C.R., White, R.E., Roy, T., & Cox, B.E. (2000). Calcium-activated potassium channels and nitric oxide coregulate estrogen-induced vasodilation. *American Journal of Physiology - Heart and Circulatory Physiology*, Vol.279, No.1, (July 2000), pp. H319-H328. ISSN 1522-1539.
- Rosenthal, T., & Oparil, S. (2000). Hypertension in women. *Journal of Human Hypertension*, Vol.14, No.10-11 (October-November 2000), pp.691-704, ISSN 0950-9240.
- Rossouw, J.E., Garnet L. Anderson, G.L., Prentice, R.L., LaCroix, A.Z., Kooperberg, C., Stefanick, M.L., Jackson, R.D., Beresford, S.A., Howard, B.V., Johnson, K.C., Kotchen, J.M., & Ockene, J. Writing Group for the Women's Health Initiative Investigators. (2002). Risks and Benefits of Estrogen Plus Progestin in Healthy Postmenopausal Women: Principal Results From the Women's Health Initiative Randomized Controlled Trial. *Journal of the American Medical Association*, Vol.288, No.3, (July 2002), pp. 321-333, ISSN 1017-1606.
- Rossouw, J., Prentice, R., Manson, J., Wu, L., Barad, D., Barnabei, V., Ko, M., LaCroix, A., Margolis, K., & Stefanick, M. (2007). Postmenopausal hormone therapy and risk of cardiovascular disease by age and years since menopause. *Journal of the American Medical Association*, Vol. 297, No. 13, (April 2007), pp. 1465-1477, ISSN 1538-3598.
- Schnoes, K.K., Jaffe, I.Z., Iyer, L., Dabreo, A., Aronovitz, M., Newfell, B., Hansen, U., Rosano, G., & Mendelsohn, M.E. (2008). Rapid recruitment of temporally distinct vascular gene sets by estrogen. *Molecular Endocrinology*, Vol.22, No.11, (November 2008), pp. 2544-2556, ISSN 1944-9917.
- Schunkert, H., Danser, A.H., Hense, H.W., Derkx, F.H., Kürzinger, S., & Riegger, G.A. (1997). Effects of estrogen replacement therapy on the renin-angiotensin system in postmenopausal women. *Circulation*, Vol.95, No.1, (January 1997), pp.39-45, ISSN 0009-7322.
- Seely, E.W., Walsh, B.W., Gerhard, M.D., & Williams, G.H. (1999). Estradiol with or without progesterone and ambulatory blood pressure in postmenopausal women. *Hypertension*, Vol.33, No.5, (May 1999), pp. 1190-1194, ISSN 0194-911X.
- Shan, J., Resnick, L.M., Liu, Q.Y., Wu, X.C., Barbagallo, M., & Pang, P.K.T. (1994). Vascular effects of 17 β -estradiol in male Sprague-Dawley rats. *American Journal of Physiology Heart and Circulatory Physiology*, Vol.266, No.3-Pt 2 (March 1994), pp. H967-H973. ISSN: 0363-6135.
- Siamopoulos, K.C., Papanikolaou, S., Elisaf, M., Theodorou, J., Pappas, H., & Papanikolaou, N. (1996). Ambulatory blood pressure monitoring in normotensive pregnant women. *Journal of Human Hypertension*, Vol.10, No.Suppl3 (September 1996), pp.S51-S54, ISSN 0950-9240.
- Simoncini, T., Mannella, P., Fornari, L., Caruso, A., Willis, M.Y., Garibaldi, S., Baldacci, C., & Genazzani, A.R. (2004). Differential Signal Transduction of Progesterone and Medroxyprogesterone Acetate in Human Endothelial Cells. *Endocrinology*, Vol.145, No.12 (December 2004), pp. 5745-5756, ISSN 1945-7170.
- Somlyo, A.P., & Somlyo, A.V. (1994). Signal transduction and regulation in smooth muscle. *Nature*, Vol.372, No.6503, (November 1994), pp. 231-236, ISSN 1476-4687.

- Special Correspondent. (1958). Hormones and atherosclerosis: Meeting in Utah. *British Medical Journal*, Vol.1, No.5078, (May 1958), pp. 1059-1060, ISSN 0959-8138.
- Speroff, L. & Fritz, M. (2005). *Clinical Gynecologic Endocrinology and Infertility*. Editor Weinberg, R. Lippincott, Williams, and Wilkins, ISBN 0-7817-4795-3, Philadelphia.
- Staessen, J.A., Ginocchio, G., Thijs, L., & Fagard, R. (1997). Conventional and ambulatory blood pressure and menopause in a prospective population study. *Journal of Human Hypertension*, Vol.11, No.8 (August 1997), pp. 507-514, ISSN 0950-9240.
- Staessen, J.A., Celis, H., & Fagard, R. (1998). The epidemiology of the association between hypertension and menopause. *Journal of Human Hypertension*, Vol.12, No.9 (September 1998), pp.587-592, ISSN 0950-9240.
- Stevenson, L.C. (2009). Type and Route of Estrogen Administration. *Climacteric*, Vol.12, No.s1, (January 2009), pp. 86-90, ISSN 1473-0804.
- Störk, S., van der Schouw, Y.T., Grobbee, D.E., & Bots, M.L. (2004). Estrogen, inflammation and cardiovascular risk in women: a critical appraisal. *Trends in Endocrinology and Metabolism*, Vol.15, No.2 (March 2004), pp. 66-72, ISSN 1043-2760.
- Szalai, A., Agrawal, A., Greenhough, T., & Volanakis, J.E. (1997) C-reactive protein: structural biology, gene expression, and host defense function. *Immunologic Research*, Vol.16, No. 2, (1997), pp. 127-13, ISSN 0257-277X.
- Szalai, A., van Ginkel, F., Dalrymple, S., Murray, R., McGhee, J., & Volanakis, J. (1998) Testosterone and Il-6 requirements for human c-reactive protein gene expression in transgenic mice. *Journal of Immunology*, Vol. 160, No. 11, (June 1998), pp. 5294-5299, ISSN 0022-1767.
- Szalai, A. & McCrory, M. (2002). Varied biologic functions of c-reactive protein: Lessons learned from transgenic mice. *Immunologic Research*, Vol. 26, No. 1-3, (2002), pp. 279-287, ISSN 0257-277X.
- Takahashi, T., Anzai, T., Kaneko, H., Mano, Y., Anzai, A., Nagai, T., Kohno, T., Maekawa, Y., Yoshikawa, T., Fukuda, K., & Ogawa, S. (2010). Increased c-reactive protein expression exacerbates left ventricular dysfunction and remodeling after myocardial infarction. *American Journal of Physiology - Heart and Circulatory Physiology*, Vol. 299, No. 6, (December 2010), pp. H1795-1804, ISSN 0363-6135.
- Tech, H., Quan, A., & Leung, S. (2001). Vascular effects of estrone and DES in porcine coronary arteries. *Menopause*, Vol.16, No.1, (January 2001), pp. 104-109, ISSN 1530-0374.
- The Women's Health Initiative Steering Committee. (2004). Effects of Conjugated Equine Estrogen in Postmenopausal Women with Hysterectomy: The Women's Health Initiative Randomized Controlled Trial. *Journal of the American Medical Association*, Vol.291, No.14, (April 2004), pp.1701-1712, ISSN 1017-1606.
- The Women's Health Initiative. (2006). Conjugated equine estrogens and coronary heart disease: the Women's Health Initiative. *Archives of Internal Medicine*. Vol. 166, No.3, (February 2006), pp. 357-365, ISSN 1538-3679.
- The Writing Group for the PEPI Trial. (1995). Effects of estrogen or estrogen/progestin regimens on heart disease risk factors in postmenopausal women. The Postmenopausal Estrogen/Progestin Interventions (PEPI) Trial. *Journal of the American Medical Association*, Vol.273, No.3, (January 1995), pp. 199-208
- Thijs, A., Van Baal, W. A M., Van Der Mooren, M.J., Kenemans, P., Dräger, A.M., Huijgens, P. C., & Stehouwer, C.D.. (2002). Effects of hormone replacement therapy on blood

- platelets. *European Journal of Clinical Investigation*, Vol.32, No.8, (August 2002), pp. 613-618, ISSN 1365-2362.
- Toh, S., Hernandez-Diaz, S., Logan, R., Rossouw, J., & Hernan, M. (2010). Coronary heart disease in postmenopausal recipients of estrogen plus progestin therapy: does the increased risk ever disappear? A randomized trial. *Annals of Internal Medicine*, Vol. 152, No. 4, (February 2010), pp. 211-217, ISSN 1539-3704.
- Tse, J., Martin-McNulty, B., Halks-Miller, M., Kauser, K., DelVecchi, V., Vergona, R., Sullivan, M.E., & Rubyani, G.M. (1999). Accelerated atherosclerosis and premature calcified cartilaginous metaplasia in the aorta of diabetic male Apo E knockout mice can be prevented by chronic treatment with 17 β -estradiol. *Atherosclerosis*, Vol.144, No.2, (June 1999), pp. 303-313, ISSN 0021-9150.
- Turgeon, J.L., McDonnell, D.P., Martin, K.A., & Wise, P.M. (2004). Hormone Therapy: Physiological Complexity Belies Therapeutic Simplicity. *Science*, Vol.304, No.5675, (May 2004), pp. 1269-1273, ISSN 1095-9203.
- Van Buren, G.A., Yang, D.S., & Clark, K.E. (1992). Estrogen-induced uterine vasodilatation is antagonized by L-nitroarginine methyl ester, an inhibitor of nitric oxide synthesis. *American Journal of Obstetrics & Gynecology*, Vol.167, No.3, (September 1992), pp. 828-833, ISSN 1097-6868.
- Vongpatanasin, W., Tuncel, M., Wang, Z., Arbique, D., Mehrad, B., & Jialal, I. (2003). Differential effects of oral versus transdermal estrogen replacement therapy on c-reactive protein in postmenopausal women. *Journal of the American College of Cardiology*, Vol. 41, No. 8, (April 2003), pp. 1358-1363, ISSN 0735-1097.
- Walsh, B.W., Schiff, I., Rosner, B., Greenberg, L., Ravnkar, V., & Sacks, F.M. (1991). Effects of postmenopausal estrogen replacement on the concentrations and metabolism of plasma lipoproteins. *The New England Journal of Medicine*, Vol.325, No.17, (October 1991), pp. 1196-1204, ISSN 1533-4406.
- Wang, D., Oparil, S., Chen, Y., McCrory, M., Skibinski, G., Feng, W., & Szalai, A. (2005). Estrogen treatment abrogates neointima formation in human c-reactive protein transgenic mice. *Arteriosclerosis, Thrombosis, and Vascular Biology*. Vol. 25, No. 10, (October 2005), pp. 2094-2099.
- Wassertheil-Smoller, S., Anderson, G., Psaty, B.M., Black, H.R., Manson, J., Wong, N., Francis, J., Grimm, R., Kotchen, T., Langer, R., & Lasser N. (2000). Hypertension and its treatment in postmenopausal women: baseline data from the Women's Health Initiative. *Hypertension*, Vol.36, No.5, (November 2000), pp.780-789, ISSN 0194-911X.
- Williams, A.K., Honore, E.K., Washburn, S.A., & Clarkson, T.B. (1994). Effects of hormone replacement therapy on reactivity of atherosclerotic coronary arteries in cynomolgus monkeys. *Journal of the American College of Cardiology*, Vol.24, No.7, (December 1994), pp. 1757-1761, ISSN 0735-1097.
- Xing, D., Miller, A., Novak, L., Rocha, R., Chen, Y.F., & Oparil, S. (2004). Estradiol and progestins differentially modulate leukocyte infiltration after vascular injury. *Circulation*, Vol.109, No.2, (January 2004), pp.234-241, ISSN 0009-7322.
- Xing, D., Feng, W., Miller, A., Weathington, N., Chen, Y., Novak, L., Blalock, E., & Oparil, S. (2007). Estrogen modulates TNF- α -induced inflammation in rat aortic smooth muscles cells through estrogen receptor- β activation. *American Journal of Physiology - Heart and Circulatory Physiology*, Vol. 292, No. 6, (June 2007), pp. H2607-H2612, ISSN 0363-6135.

- Xing, D., Hage, F., Chen, Y., McCrory, M., Feng, W., Skibinski, G., Majid-Hassan, E., Oparil, S., & Szalai, A. (2008). Exaggerated neointima formation in human c-reactive protein transgenic mice is IgG FC receptor type I (fc gamma r1)-dependent. *American Journal of Pathology*, Vol. 172, No. 1, (January 2008), pp. 22-30, ISSN 0002-9440.
- Xing D., Nozell, S., Chen, Y.F., Hage, F., Oparil, S. (2009). Estrogen and mechanisms of vascular protection. *Arteriosclerosis, Thrombosis, and Vascular Biology.*, Vol.29, No.3 (March 2009), pp. 289-295, ISSN 1524-4636.
- Yamada, S., Gotoh, T., Nakashima, Y., Kayaba, K., Ishikawa, S., Nago, N., Nakamura, Y., Itoh, Y., & Kajii, E. (2001). Distribution of serum c-reactive protein and its association with atherosclerotic risk factors in a japanese population : Jichi medical school cohort study. *American Journal Of Epidemiology*, Vol. 153, No. 12, (June 2001), pp. 1183-1190, ISSN 0002-9262.
- Yee, D.L., & Bray, P.F. Platelet hyperreactivity: risk factors and the effects of hormones. *Adv Stud Med*, Vol.4, No.2, (February 2004), pp. 72-78.
- Yoshimura, T., Ohshige, A., Maeda, T., Ito, M., & Okamura, H. (1999). Estrogen replacement therapy decreases platelet activating factor acetylhydrolase activity in postmenopausal women. *Maturitas*, Vol.31, No.2, (January 1999), pp. 149-153, ISSN 0378-5122.
- Zhang, R., Zhang, Y., Huang, X., Wu, Y., Chung, A., Wu, E., Szalai, A., Wong, B., Lau, C., & Lan, H. (2010). C-reactive protein promotes cardiac fibrosis and inflammation in angiotensin II-induced hypertensive cardiac disease. *Hypertension*, Vol. 55, No. 4, (April 2010), pp. 953-960, ISSN 0194-911X.
- Zhu, Y., Bian, Z., Lu, P., Karas, R.H., Bao, L., Cox, D., Hodgin, J., Shaul, P.W., Thoren, P., Smithies, O., Gustafsson, J.A., & Mendelsohn, M.E. (2002). Abnormal vascular function and hypertension in mice deficient in estrogen receptor β . *Science*, Vol.295, No.5554, (January 2002), pp.505-508, ISSN 1095-9203.

IntechOpen



Sex Hormones

Edited by Prof. Raghendra Dubey

ISBN 978-953-307-856-4

Hard cover, 430 pages

Publisher InTech

Published online 08, February, 2012

Published in print edition February, 2012

Sex Hormones not only regulate reproductive function, but they also play a prominent role in the biology and physiology of several organs/tissues and in the pathophysiology of several diseases. During the last two decades, the information on the mechanisms of action of sex hormones, such as estrogens and androgens, has rapidly evolved from the conventional nuclear receptor dependent mechanisms to include additional non-nuclear, non-genomic and receptor-independent mechanisms. This highlights the need to update the current knowledge on sex hormones and their mode of action. Increasing evidence that exogenous/epigenetic factors can influence sex hormone production and action highlights the need to update our knowledge on the mechanisms involved. This book provides a systematic and updated overview of the male/female sex-hormones and their impact in the biology and physiology of various organs. Additionally, the book discusses their positive and negative association with the pathophysiology of various diseases (e.g. osteoporosis, cardiovascular-disease, hypogonadism, reproduction, cancer) and their therapeutic potential.

How to reference

In order to correctly reference this scholarly work, feel free to copy and paste the following:

Meaghan Bowling, Suzanne Oparil, Fadi Hage, Robert Hilgers and Dongqi Xing (2012). Sex Hormones and Vascular Function, Sex Hormones, Prof. Raghendra Dubey (Ed.), ISBN: 978-953-307-856-4, InTech, Available from: <http://www.intechopen.com/books/sex-hormones/sex-hormones-and-vascular-function>

INTECH
open science | open minds

InTech Europe

University Campus STeP Ri
Slavka Krautzeka 83/A
51000 Rijeka, Croatia
Phone: +385 (51) 770 447
Fax: +385 (51) 686 166
www.intechopen.com

InTech China

Unit 405, Office Block, Hotel Equatorial Shanghai
No.65, Yan An Road (West), Shanghai, 200040, China
中国上海市延安西路65号上海国际贵都大饭店办公楼405单元
Phone: +86-21-62489820
Fax: +86-21-62489821

© 2012 The Author(s). Licensee IntechOpen. This is an open access article distributed under the terms of the [Creative Commons Attribution 3.0 License](#), which permits unrestricted use, distribution, and reproduction in any medium, provided the original work is properly cited.

IntechOpen

IntechOpen