

We are IntechOpen, the world's leading publisher of Open Access books Built by scientists, for scientists

4,800

Open access books available

122,000

International authors and editors

135M

Downloads

Our authors are among the

154

Countries delivered to

TOP 1%

most cited scientists

12.2%

Contributors from top 500 universities



WEB OF SCIENCE™

Selection of our books indexed in the Book Citation Index
in Web of Science™ Core Collection (BKCI)

Interested in publishing with us?
Contact book.department@intechopen.com

Numbers displayed above are based on latest data collected.
For more information visit www.intechopen.com



Management of Bone Loss in Primary and Revision Knee Replacement Surgery

Matteo Fosco¹, Rida Ben Ayad¹, Luca Amendola¹,
Dante Dallari¹ and Domenico Tigani²

¹First Ward of Orthopaedic Surgery, University of Bologna,
Rizzoli Orthopaedic Institute, Bologna

²Department of Orthopaedic Surgery,
Santa Maria alle Scotte Hospital, Siena
Italy

1. Introduction

Total knee arthroplasty (TKA) often deal with bone defect localized in areas corresponding to tibial and femoral articular surfaces, a condition that is often observed in revision knee prosthetic surgery but occasionally in primary arthroplasty of the knee too. Such intraoperative situation, could create a main problem in maintaining proper alignment of the implant components and in establishing sufficient bone stock to achieve a stable bone-implant interface. The surgeon must assess the degree of complexity preoperatively and intraoperatively and have a broad armamentarium available during surgery.

Multiple surgical options are available to repair or reconstruct the loss of bone, these include: bone cement, bone grafts, metal augments and custom-made implants.

Principles to consider in bone loss management are knee-related (particularly defect size and location, ligament stability, limb alignment) and patient-related (age, body mass index, activity level, life expectancy).

2. Primary TKA

Bone loss observed during primary arthroplasty of the knee is less frequent than during revision surgery. In primary implants causes of bone defect include:

- Osteonecrosis;
- Sequelae of fracture of tibial plateau or femoral condyles;
- Bone cysts;
- Previous tibial osteotomies;
- Inflammatory arthropathies.

However final cause is always represented by bone erosion, secondary to varus or valgus deformity of the knee; the consequent overload of medial or lateral compartment bring to collapse of the subchondral bone (Tigani et al., 2004).

Typically, in varus knee bone defect contribute to collapse of the medial tibial plateau, firstly in the posteromedial site. Instead, in valgus knee, bone defect may involve the tibia (with a

contained central defect) and the external femoral condyle, that is defective in the distal and posterior sites (Insall & Easley, 2001) (Fig. 1).

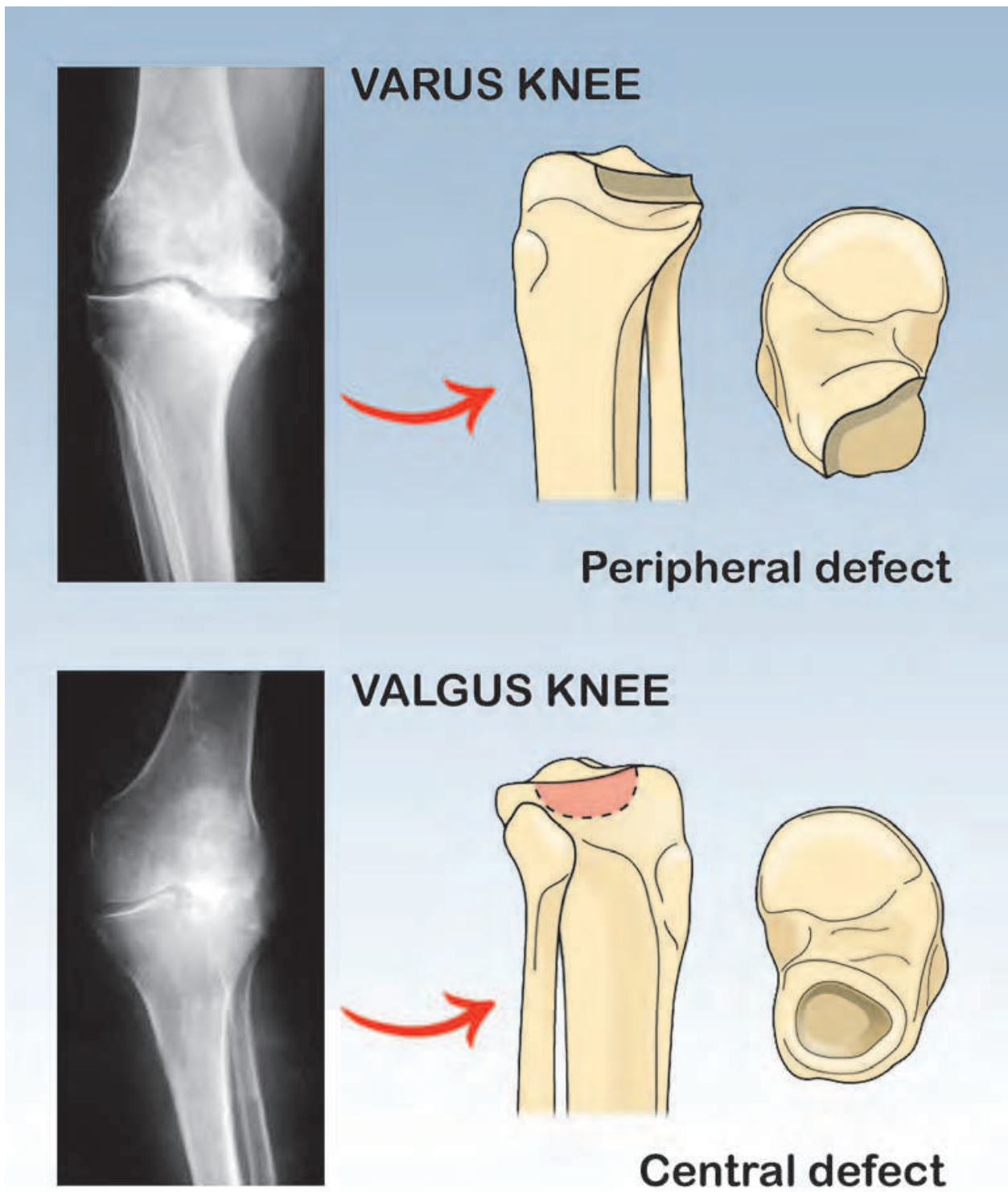


Fig. 1. Usually varus knee appears with bone defect in posteromedial site of tibial plateau. Instead, in valgus knee bone defect usually involves the central part of lateral tibial hemiplateau and the external femoral condyle.

Type	Single condylar/hemiplate involvement (%)	Depth(mm)
I (a/b)	minimal < 50%	< 5
II (a/b)	> 50 < 70%	5-10
III (a/b)	> 70% < 90%	> 10
IV (a/b)	> 90%	> 10

a) Intact peripheral rim
b) Deficient peripheral rim

Table 1. Rand classification of bone loss (modified from Rand JA, 1991).

First classification of bone defects thus consists on distinction between central forms (with defect confined within the peripheral bone cortex), and peripheral forms (characterized by involvement of the peripheral cortex). In 1991 Rand proposed a classification that considers the percentage extent of the defect into the tibial plateau or femoral condyle, distinguishing between four grades of increasing severity of the lesion (Rand, 1991) (Table 1).

The most common defect is observed in the presence of a varus knee, with defect located in the posteromedial region of the tibia; the lesion is characterized by the presence of an important sclerosis of the subchondral bone and its depth usually doesn't exceed 8 to 10mm. In such simple cases, resection of the tibial plateau allow to completely remove the defect, without requiring further procedures.

Instead, in deeper and more severe lesions, tibial resection of more than 12 mm, could lead to sacrifice important ligamentous structures and has been observed to considerably alters bone quality, thus requiring other options (Laskin, 1989).

3. Revision TKA

Bone loss in revision TKA could always be considered as a consequence of the previous arthroplasty. In these cases, on preoperative radiographs bone loss is often underestimated relative to the true bone loss found during revision surgery. In a retrospective analysis of 31 patients with symptomatic TKAs who had osteolytic lesions confirmed by computed tomography, plain radiography detected only 17% of the osteolytic lesions (Reish et al, 2004).

The final evaluation of bone loss is made more accurately during surgery, after component removal; so that various classification systems used are mainly based on the size and type of the defect found intraoperatively.

Clatworthy and Gross firstly classified defects as contained central forms, and uncontained peripheral forms (with involvement of the peripheral cortical rim), then further distinguishing between intact metaphyseal bone or not (Clatworthy & Gross, 2003). The most practical system is the Anderson Orthopedic Research Institute (AORI) classification described by Engh, that considers bone loss from the tibia and femur independently (T and F) (Engh & Ammeen, 1999); distinction is then made depending on involvement of 1 condyle/plateau (A) or 2 (B) (Table 2,3).


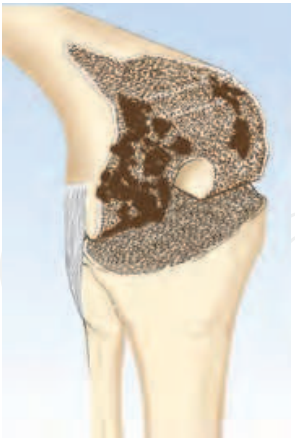
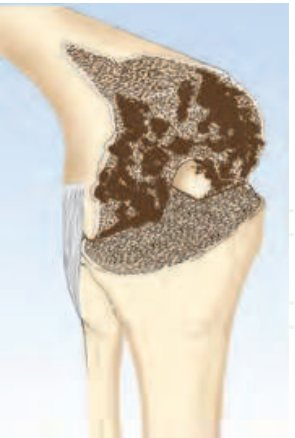
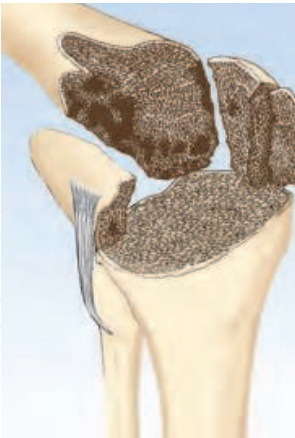
Femoral defect			
F1	F2a	F2b	F3
			
Small amounts of bone loss not compromising component stability (contained, minor defects)	Damaged unicondylar structural bone (noncontained)	Damaged bicondylar structural bone (noncontained)	Significant bone loss compromising a major portion of the condyles with ligamentous instability (noncontained)

Table 2. Classification of femoral defect (modified from Engh & Ammeen, 1999). Contained defect is considered as a loss of metaphyseal cancellous bone with a significant loss of surrounding cortical support


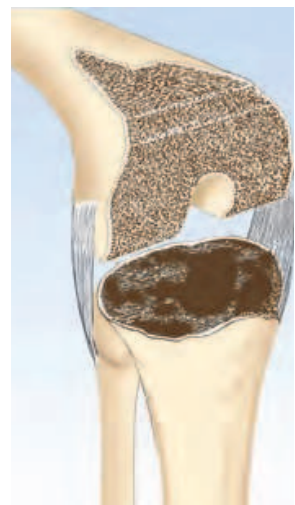
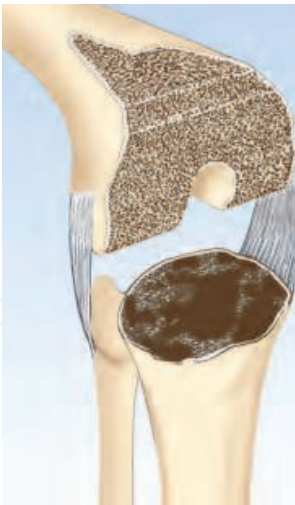
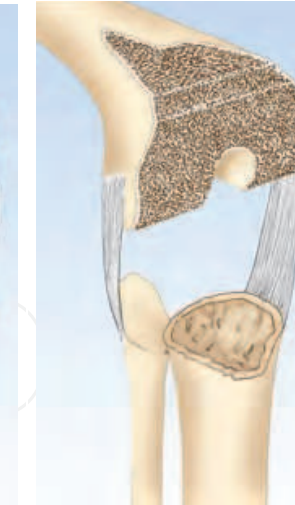
Tibial defect			
T1	T2a	T2b	T3
			
Small amounts of bone loss not compromising component stability (contained)	Damaged unilateral metaphyseal bone needing augmentation to maintain joint line (noncontained)	Damaged bilateral metaphyseal bone needing augmentation to maintain joint line (noncontained)	Significant bone loss compromising a major portion of the plateau, that may involve detachment of the patellar tendon (noncontained)

Table 3. Classification of tibial defect (modified from Engh & Ammeen, 1999).

Main causes of bone loss during revision arthroplasty are stress shielding, wear debris and implant loosening; these factors may be interrelated (Lombardi et al, 2010):

- Stress shielding causes an “osteopenic” type of bone loss behind the prosthetic components, due to pressure shielded by the implant and redistributed to the bone-cement-implant interface;
- Wear debris of polyethylene, cement and metal particles; in contrast to the less common osteopenic type of bone loss seen in stress shielding, wear causes an “osteolytic” type of bone loss, around apparently stable implants (Van Loon et al, 1999). Osteolysis is defined as the periprosthetic replacement of bone by chronic inflammatory tissue without evidence of loosening. This type of osteolysis is more common in young, male, overweight patients with osteoarthritis;
- Implant aseptic loosening resulting in direct mechanical bone loss at the cement-bone interface;
- Implant septic loosening;
- Iatrogenic damage resulting directly from implant removal, thus representing an important factor in preserving bone stock during revision TKA. Removal of components with no loosening or with an intercondylar box or stems will create large bone defects. Cement should be removed using small sagittal saw and flexible osteotomes, avoiding levering which could cause a fracture.

The objectives of revision surgery include reestablishment of the anatomic joint line, long-term joint stability, and restoration of bone stock with a fast return to full weight-bearing and function.

So that, implant selection should be based not only on the status of the ligamentous and soft tissue stabilizing structures, but also on the severity and type of bone loss.

4. Management of bone defects

Various options exist to manage bone defects, available in both primary and revision surgery. Indication to whether option to use, depends on knee-related and patient-related factors.

4.1 Translating the prosthetic component away from the bone defect

This option is useful when marginal bony defect exist particularly at the tibial side. Nevertheless smaller tibial tray determines lesser contact surface and greater load concentration (Figure 2).

4.2 Cement filling

The use of cement seems to be applicable in knee arthroplasty, either alone or in combination with screws, but only in cases of relatively small defects (Figure 3). Some authors (Lotke et al., 1991; Ritter et al., 1993) have observed good medium or long term results, while others (Brooks et al., 1984; Freeman et al., 1982; Insall & Ealsey, 2001) had obtained poor ones. Moreover these studies showed that weak biomechanical characters of cement do not improve in resistance of the implant with use of support screws.

So that we currently suggest cement only for peripheral small defects with defect extension of less than 50% of bone surface and less than 5mm of depth. In larger lesions, alone or in combination with support screws, it is not recommended.

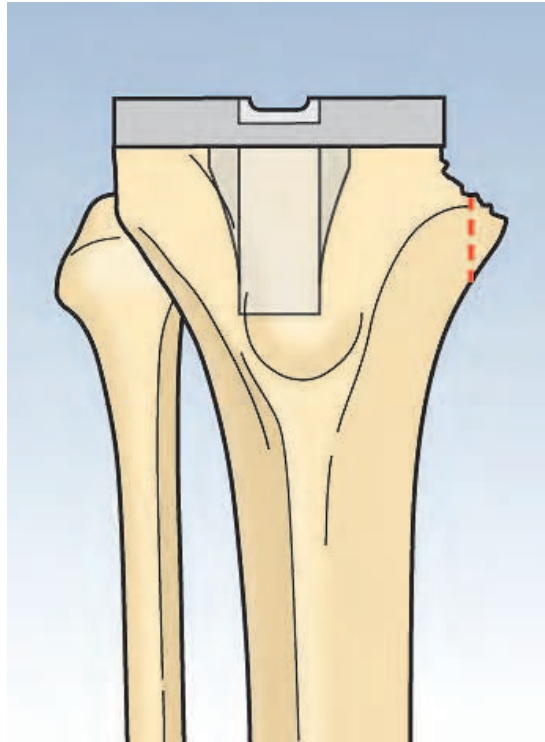


Fig. 2. Translating tibial component could be a viable option for very small defect; this technique should not be used in angular deformity due to abnormal concentration of load forces.

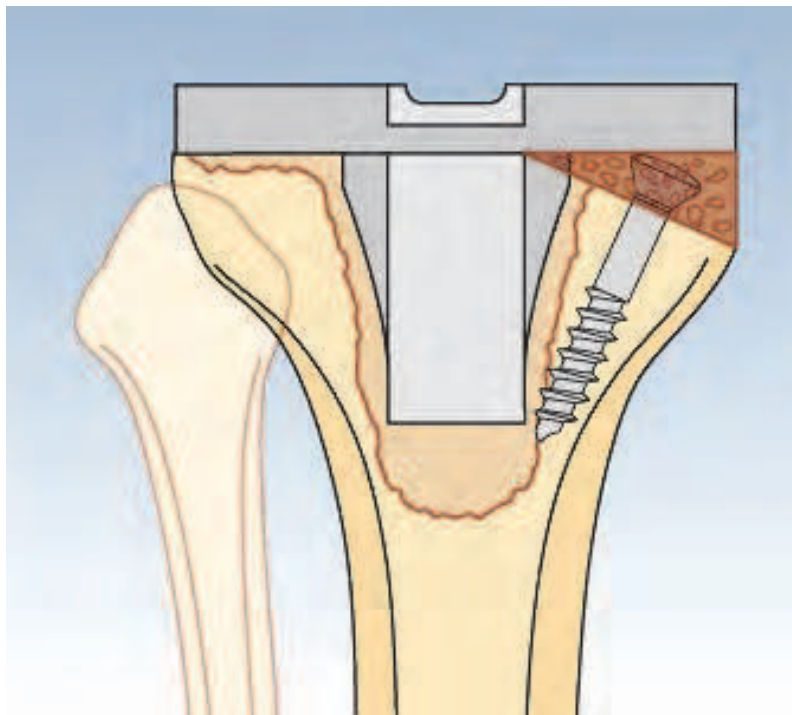


Fig. 3. Cement filling could be used with or without screws (modified from Brooks et al.,1984).

4.3 Bone grafting

Recently, grafting constitutes a frequent option used for the treatment of bone defect in knee arthroplasty. The rationale in using bone grafts consisted in the possibility of a new formation of vital bone, through a process of osteoinduction and/or osteoconduction. Autoplastic bone grafts are likely to be used for limited defects, while structural allograft could be necessary in cases of larger lesions.

Bone grafts, both homoplastic and autoplastic, are to be preferred in younger patients because they allow for bone regeneration that represents an essential condition in case of reintervention.

4.3.1 Autologous bone grafting

In primary TKA, the resected femoral condyles or tibial plateau sometimes can be used as a source of autograft for tibial defects; morcelized bone obtained from the tibia and femoral resections can be used as autograft in contained defects.

Its use have been advocated by various authors (Dorr et al., 1986; Scuderi et al., 1989), constituting a viable option due to excellent osteoinductive, osteoconductive and osteogenic properties (Fig. 4).

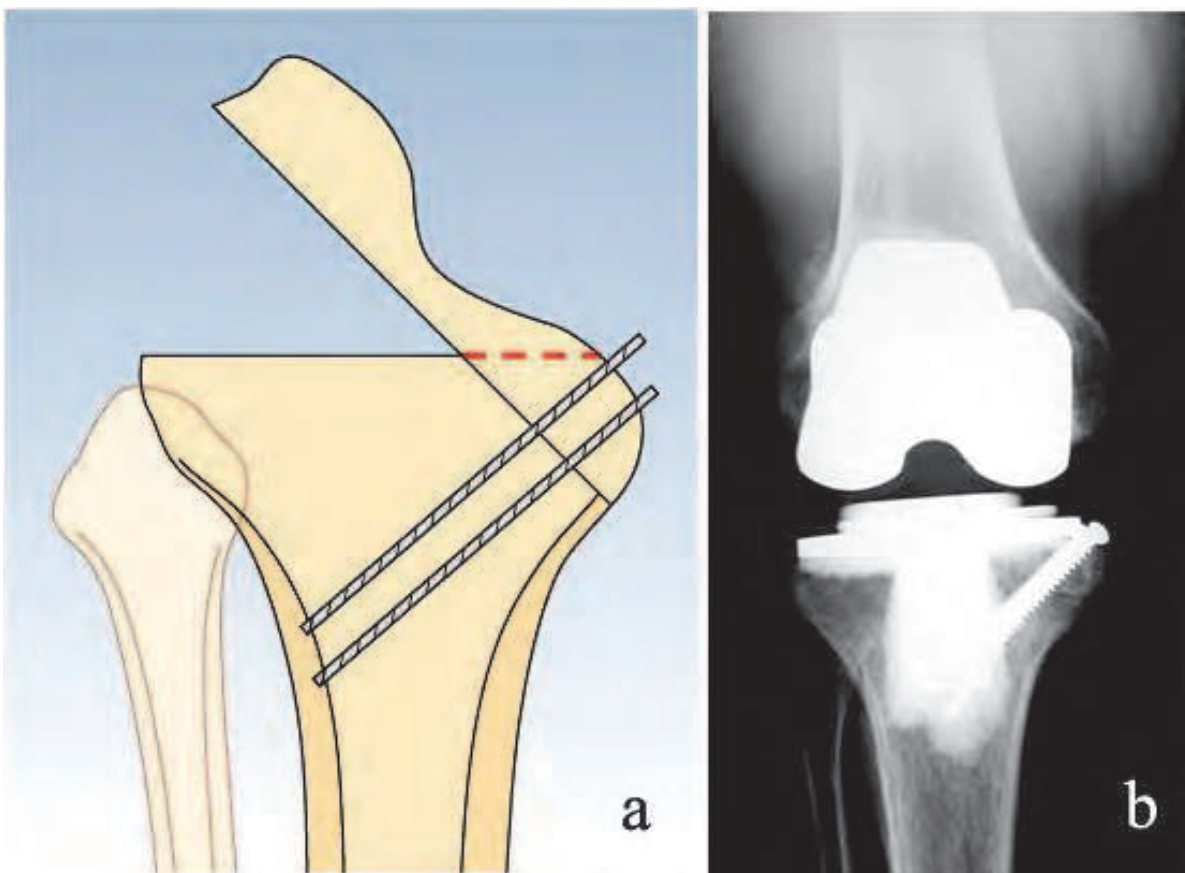


Fig. 4. An oblique planar cancellous surface is created on the recipient side, and coaptation of proximal tibia autograft surface is ensured to this recipient bed by screw or wire fixation. (courtesy of Dr. E.A. Martucci)

Nevertheless Laskin in a series of 26 patients with severe tibial bone loss treated by TKA using autogenic bone graft into the defect, observed 4 cases of grafts fragmentation with

implant subsidence within the first year (Laskin, 1989). Moreover needle biopsy in 9 cases in which the graft had not fragmented, revealed osteocytes in the lacunae in only 4 grafts. In each of four knees, there was a complete radiolucency between the graft and the tibial host bone. The final author's conclusion is to reevaluate the use of modular prostheses in large fragment defects but to continue using bone graft for smaller, circumscribed defects.

Possible reason of autoplasmic graft failure have been ipothetised:

- Varus alignment of the leg.
- Avascular host bed for the graft.
- Insufficient graft press-fit.
- Incomplete coverage of the graft by the tibial component.
- Extravasation of the cement between graft and host.

Currently there are insufficient clinical data to state with certainty that bone stock restoration with autogenic bone graft will in fact aid future revisions when necessary.

4.3.2 Allogeneic bone grafting

The limited availability of autologous graft may not be enough to compensate an extensive bone defect and use of homoplastic bone could be indicated (Fig. 5).

Cancellous or structured bone allograft could be used but always have to be considered some rules:

- The graft have to be modeled, thus to precisely adapt it to the defect;
- The graft have to be perfectly stabilized;
- The graft have to be "protected" by use of an intramedullary stems, able to reduce mechanical stress forces.

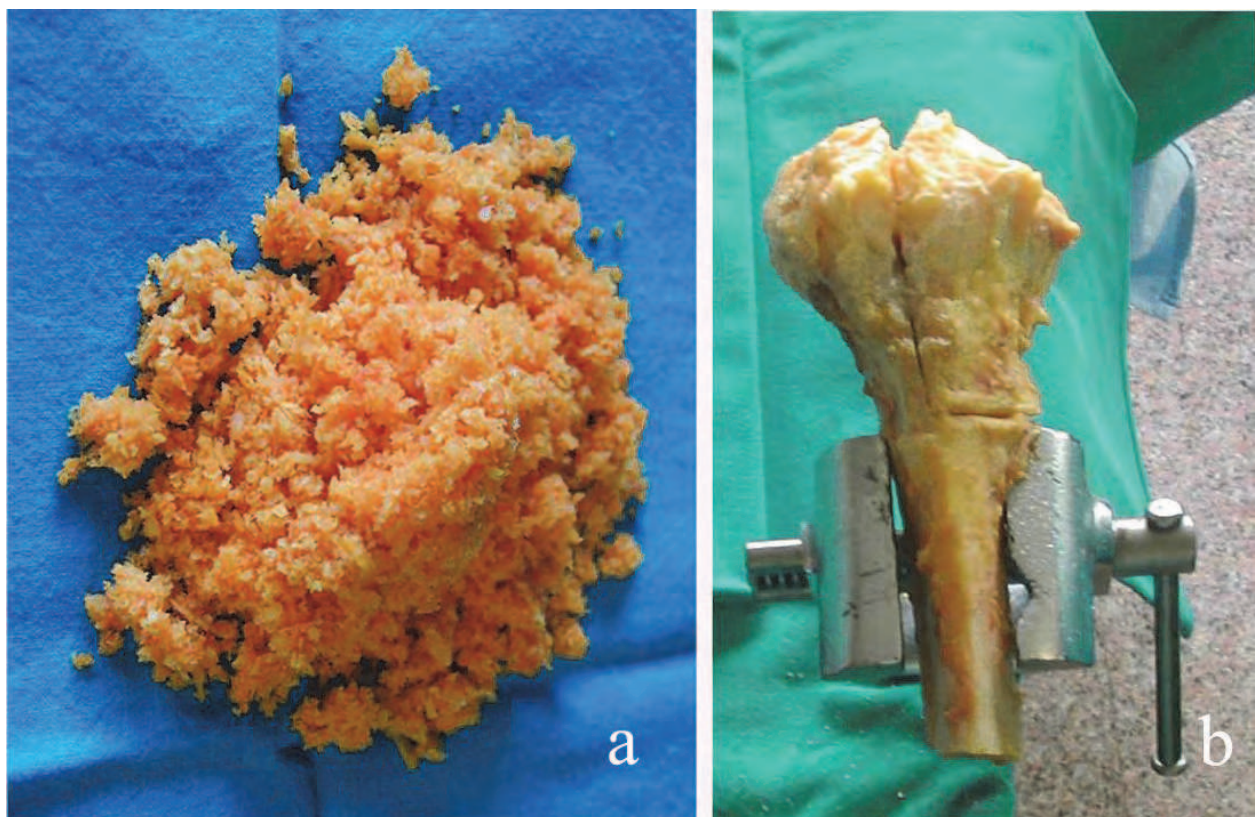


Fig. 5. (a) Cancellous bone allograft, added with antibiotic. (b) Structural bone allograft molded intraoperatively before implanting.

Nevertheless difficulties using bone homologous grafts consisted on:

- Need of a bone bank support;
- Grafts resorption;
- Increased risk of infection;
- Disease transmission.

4.3.3 Structural massive bone allograft

Structural bone allograft offers numerous advantages, including biocompatibility, bone stock restoration and potential for ligaments reattachment. Regarding their versatility it is possible to treat a wide range of bone deficiency allowing the surgeon to shape the allograft to fit the bone defect and avoid unnecessary removal of host bone. Finally allograft is relatively cost-effective if compared to the high cost of custom-made implants.

The goals of structural allograft reconstruction are to maximize the stability of the graft-host bone contact and provide a stable platform for fixation of the implant. The first step is to remove all the nonviable bone and soft tissue from in and around the defect, the presence of viable bone is absolutely necessary to maximize the likelihood of graft incorporation. Conversion of the oblique peripheral defects into rectangular space with vertical and horizontal surfaces has been demonstrated to improve stability for components fixation. The angular patterns have also a biological advantage since it allows improving the contact area of the host-graft construct maximizing the probability of graft incorporation. Regarding the choice of the graft it is important to shape the allograft similarly in order to fit the defect precisely. Graft fixation too is an important step to be taken in consideration: mainly used are partially or fully threaded cancellous screws.

In the literature there are various papers reporting about the use of allograft to restore bone defect during revision knee arthroplasty, especially for uncontained defects. In some cases with circumferential segmental bone defect of tibial plateau, have been demonstrated about 25% of allograft failure (De Long et al., 2007; Engh & Ammeen, 2007). Engh & Ammeen, whose have reviewed the results of 49 knees with severe tibial bone loss, found only four cases of failure for reasons not-directly related to collapse or resorption of the graft; most of patients had contained defect and ten presented an uncontained deficiency of which only four cases were restored with full segment allograft. Recently Backstein D, et al have reported 85.2% of success rate at an average follow-up of 5.4 years in a series of 68 revision that required a structural allograft for the treatment of uncontained defect (Backstein et al., 2006).

Even if a variability of result are present in the literature, due to the significant difference of the lesion treated, all authors agree on affirm that the use of a intramedullary stem with a sufficient length to engage diaphyseal bone is mandatory to decrease axial and shear loads to the structural allograft in accordance with previously data emerging from the laboratory (Mounasamy et al, 2006).

We have experienced reconstruction with massive structural allograft during primary total knee replacement for severe segmental medial post-traumatic tibial plateau defect in arthritic knee (Tigani et al., 2011); neither acute nor chronic complications were observed, and radiological examination referred no signs of prosthetic loosening or secondary resorption, with good grafting integration to host bone (Fig. 6).

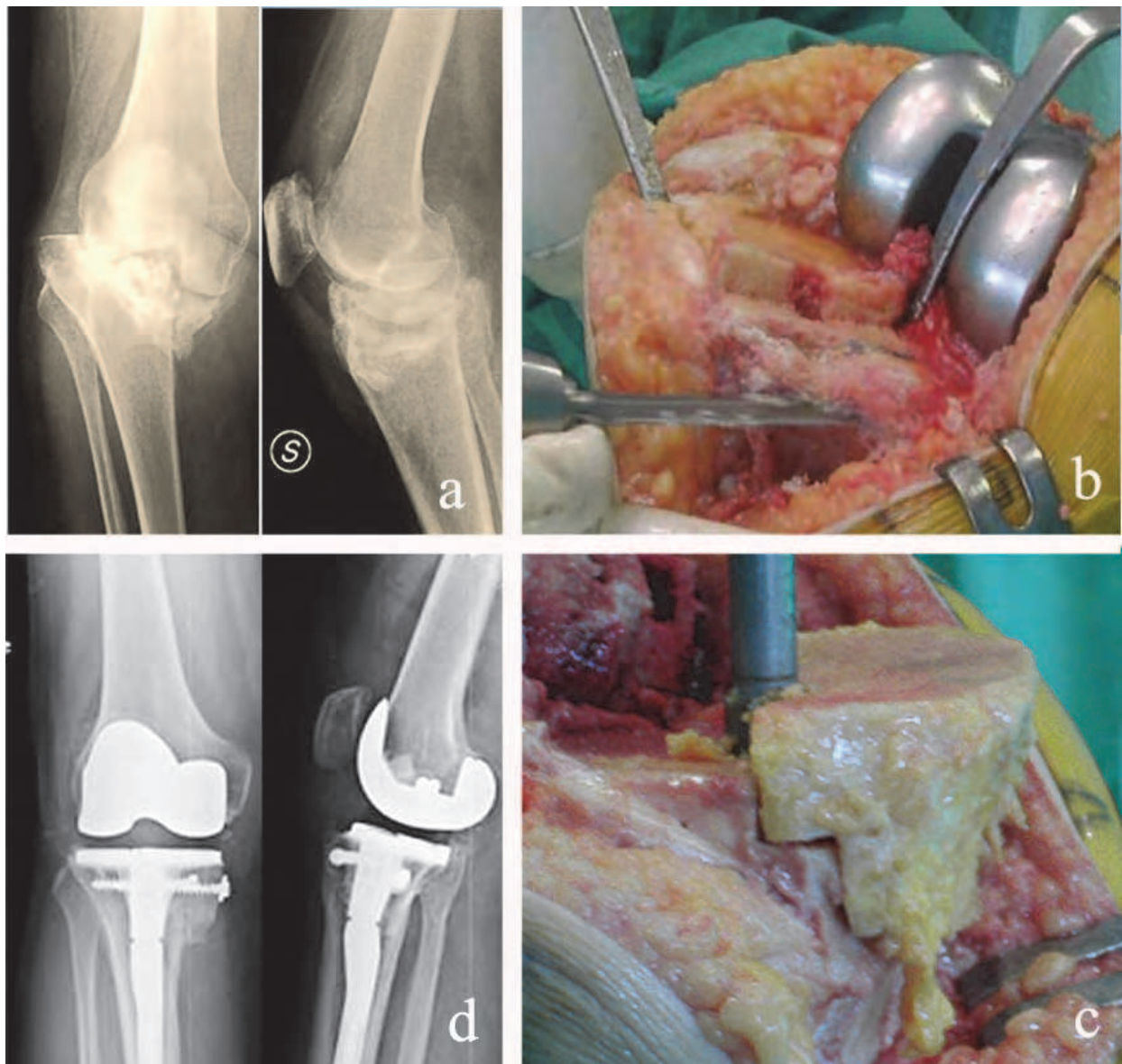


Fig. 6. (a) Pre-operative plain radiographs showing post-traumatic severe depressed medial bone stock loss; (b) preparation of tibial plateau, in a way to convert oblique defect to rectangular stepped one; (c) Fitting the allograft into the defect; (d) last follow-up plain radiographs, 12 months after the surgery.

4.4 Modular components (metal augments)

The use of metal augments for bone deficiencies has become quite popular since mid Eighties, after the work of Brooks et al which indicated that biomechanically the modular augments are equivalent to a custom implant (Brooks et al., 1984). In last decades a new biomaterial is largely used in knee prosthetic surgery: porous tantalum, in its trabecular form (trabecular metal, TM; Zimmer, Warsaw, Ind, US). TM show excellent mechanical characteristics compared to conventional implant materials (i.e. titanium and cobalt chromium): good biocompatibility, high porosity, low modulus of elasticity (Levine et al., 2007). Moreover biological advantages of TM include its negative charge and interconnective pores, which form a scaffolding and surface for osteoblast-mediated bone

ingrowth (Bobyne et al., 1999). These unique material properties of porous trabecular metal allow it to achieve immediate structural support, together with early bony ingrowth and late restoration of bone stock.

TM is available in many shapes and forms (Fig. 7): porous or solid, rectangular or wedge shaped, and can be attached with the use of cement or screws. It can be applied quickly, allow intraoperative custom fabrication, supply excellent biomechanical properties, and require minimal bone resection as the augments attach on the residual bone.

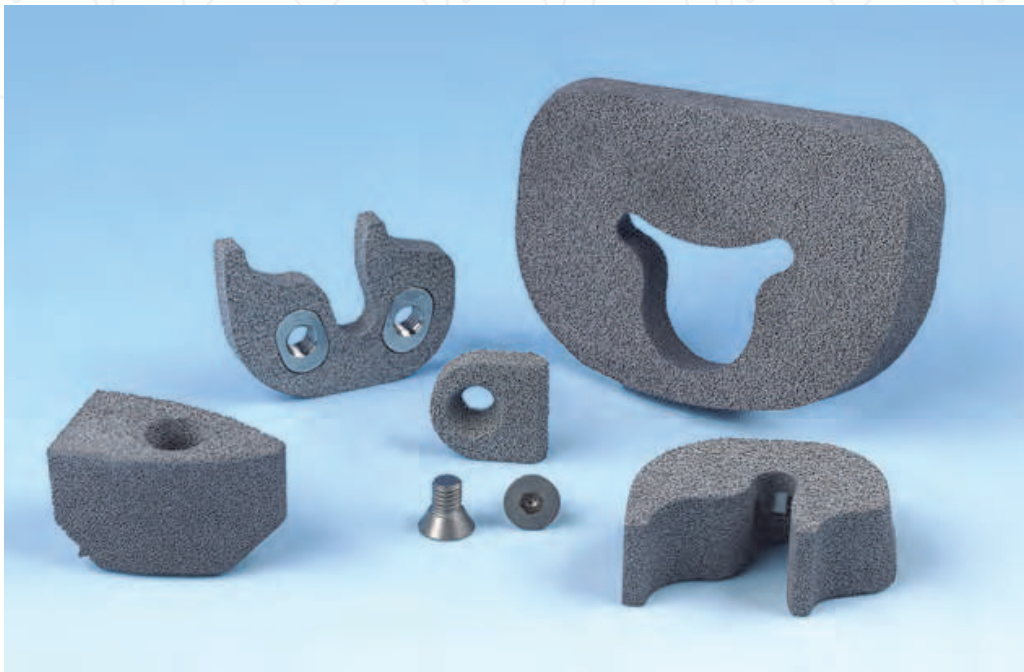


Fig. 7. TM modular augments (courtesy of Zimmer, Warsaw, Ind, US).

Preference between wedges and blocks should be accorded to the augmentation that most closely fills the defect (Fig. 8). The exception to this may be when a constrained insert is necessary; in this instance block may have some advantage because of its ability to directly transmit torsional loads as a result of geometric interlock. Even this, blocks avoid shear stress but necessitate removal of some intact host bone.

On the tibial side, multiple sizes of metal wedges and blocks are available, up to full tibial block for defects of entire plateau, thus maintaining balanced flexion and extension spaces. Femoral defects can be reconstructed with metal blocks in increments of 5 mm; because bone loss in femur is most often on the posterior and distal surfaces, augments fixed to the distal and posterior femoral condyles are used.

Surgical advantages of metal augments with respect to bone graft are:

- Possibility to customize the implant intraoperatively;
- Need not be incorporated into host bone;
- Do not carry a risk of nonunion or collapse.

Despite the versatility and a wide geometry of augments, including hemi-wedges, full wedges, and symmetric spacers, these materials can manage only a limited defect, up to 20 mm of deep.

In our practice we prefer to use cement and a step cut technique for Engh type 1 defects of less than 5 mm depth, and metal augmentation for type 2 defects of more than 5–10 mm.

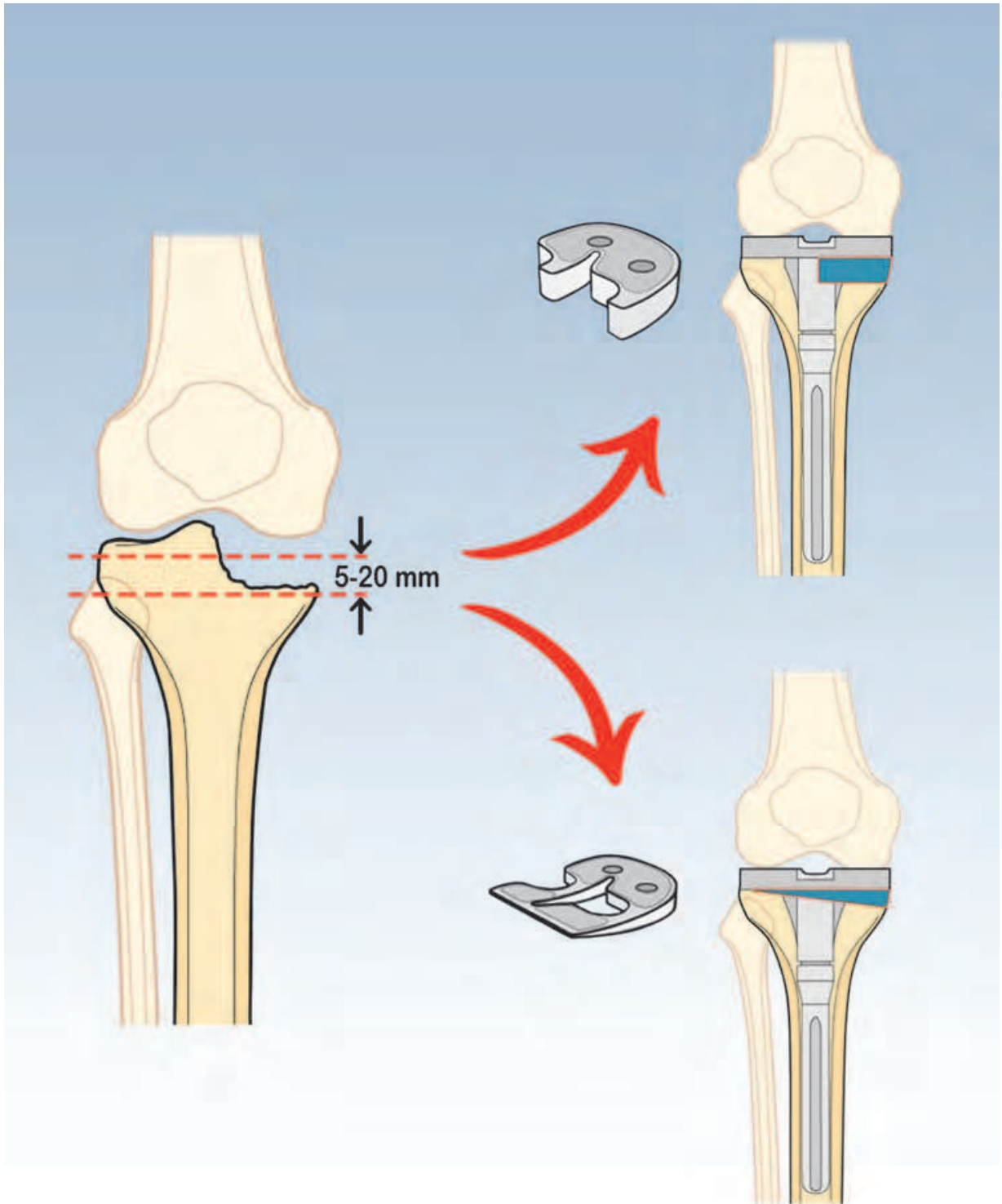


Fig. 8. TM augments in tibia are available in a rectangular or wedge fashion

The success rates in the literature using these augments range from 84–98% good or excellent results (Lucey et al., 2000; Radnay & Scuderi, 2006; Rand, 1991). Nevertheless, we think like others, that metal augmentation should be reserved to elderly patients in reason of secondary implant failure and low resistance with the time.

4.5 Metaphyseal bone loss

Familiarity with the rationale and strategies for metaphyseal fixation in revision TKA is a valuable addition to the armamentarium of the revision surgeon. In the revision setting, reliance on metaphyseal area fixation is important to carry a portion of the axial load and protecting epiphyseal ingrowth (Haidukewych et al., 2011). Metaphyseal bone loss have historically required any one or numerous of the following: cement, impaction grafting with mesh containment, metal augmentation (TM cones or metaphyseal sleeves), structural bulking grafts, custom-made or hinged/tumor-like prostheses.

Porous tantalum structural cones (Fig. 9), which are a new modern extension among the family of metal augments, have been introduced in attempt to achieve a real structural and biomechanical reconstruction of such important metaphyseal bone defects. They are useful when there are significant bone defects, or if there is cortical deficiency or fracture. Tibial tantalum cones could be used with cemented or cementless technique while femoral tantalum cones must be cemented to the bone in the United States and may be used with or without cement elsewhere.

Tantalum cones along with offset stems, increase contact area between the implant, cone, and host bone, thus serving as a mechanical platform and as support for the revision implants with less stress shielding and disuse atrophy of the surrounding bone. In addition, tantalum's low modulus of elasticity is optimal to load transfer without stress shielding problems (Radnay & Scuderi, 2006). The modular nature of the cones allows to closely fill the defect addressing to both cancellous bone loss and cortical defects. Moreover the unique material properties of porous trabecular metal allow it to achieve rapid bony ingrowth with the potential for long-term biologic fixation and restoration of bone stock. During our experience with 12 femoral and tibial tantalum cones, we registered no cases of aseptic loosening or migration, with good osteointegration to surrounding bone, in both cemented and cementless cases. Therefore we think these implants may eliminate the need for extensive bone grafting that have historically been necessary in the presence of large defects. Recently modular porous coated press fit metaphyseal sleeves have been developed as modular prosthetic adjunctive (DePuy, Warsaw, Ind, US) to obtain fixation in the metaphyseal region. Sleeves have gained initial popularity because of possibility of acting as IM cutting guide. Moreover the interface between metaphyseal sleeves and the implant is created by a Morse tapered junction, while is cemented between TM cones and the implant. However theoretical failure of the junction between metaphyseal sleeves and articular component may occur during impaction or over time and unlike TM cones, sleeves cannot be customized with a burr and cannot be used in more severe uncontained defects (Haidukewych et al., 2011). Pagnotto et al. presented early results with porous-coated metaphyseal sleeves to fill Engh type 2 and 3 defects in revision total knee replacement (53 tibial and 32 femoral sleeves). After 2 years mean of follow-up he reported revision of five sleeves (three for infection and two for loosening); all 80 of the remaining 80 sleeves showed radiographic evidence of ingrowth (Pagnotto et al., 2011).

We agree with other authors that although promising results of metaphyseal metal implants, concerns still exist regarding stress shielding and difficulty of their removal. Particularly literature is lacking of long-term follow-up studies to determine the durability of these constructs and studies are needed to compare TM cones or metaphyseal sleeves to alternative reconstructive techniques.

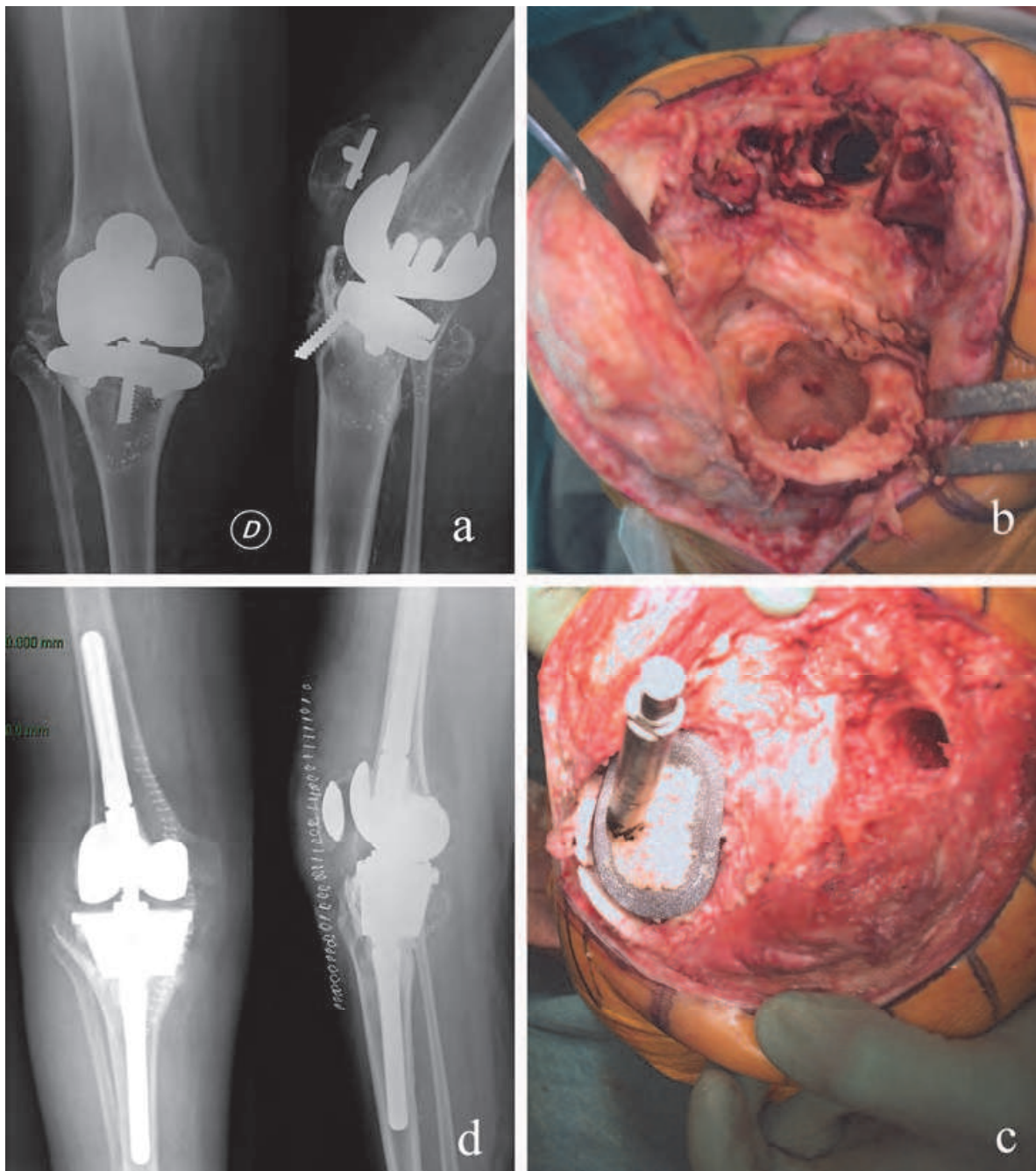


Fig. 9. (a) Aseptic knee prosthesis failure in a 58 years old patient. (b) Intraoperatively a severe confined cavity deficiency of the medial and lateral tibial plateau was found. (c) The defect was filled with TMT cone and cancellous allograft. (d) Postoperative radiological result.

4.6 Custom-made prostheses

Custom-made prostheses represent an excellent biomechanical solution; nevertheless they show some disadvantages:

- High costs.
- Delay until the implant is available.
- Poor versatility during surgery.

Custom-made implants are currently being indicated for treatment of complex bone loss and for peripheral defects exceeding 15 mm in depth (Fig. 9). Use of custom implants have been reduced with the advent of modular prosthesis.

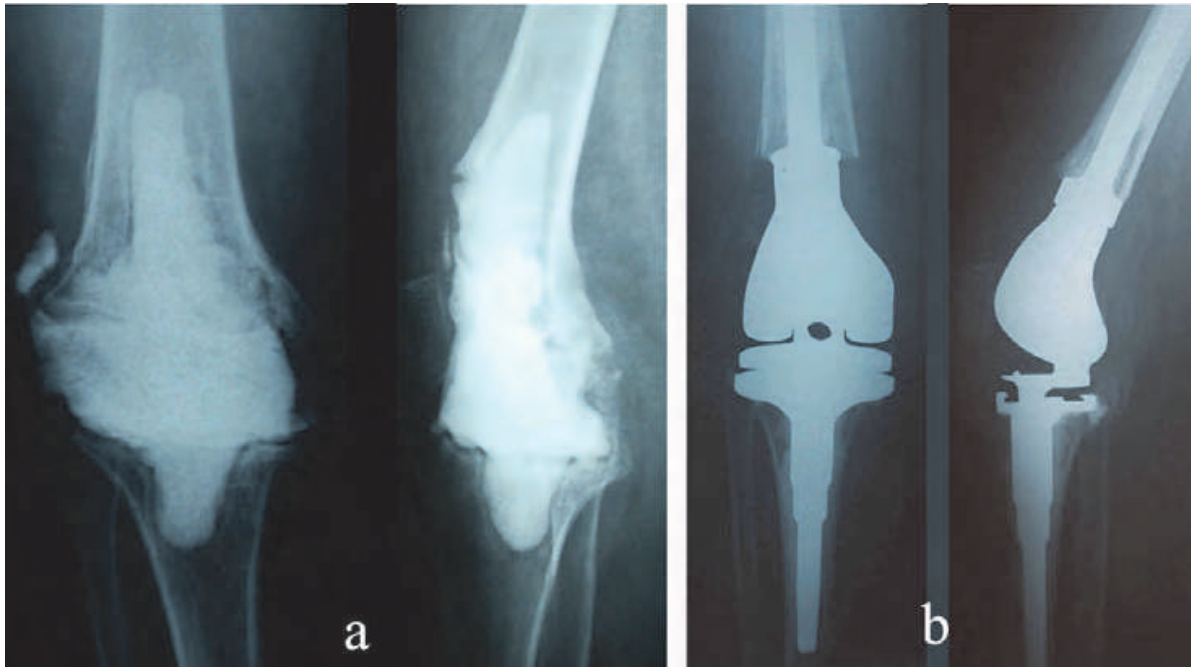


Fig. 10. (a) Severe bone defect caused by septic mobilisation and treated with two-staged revision. (b) Reconstruction was made with custom-made hinged prosthesis.

5. Surgical management

Whatever classification used to determine best treatment and whatever any surgical option is available (Table 4), always have to be considered some rules.

Careful component removal is critical to preserve bone stock; the cancellous bone is much weaker away from the native articular surface.

We prefer the use of a small sagittal saw and flexible osteotomes to loosen the components and their fixation interfaces. After careful and successful exposure and component removal, the surgeon assesses the bone defects and begins the reconstruction.

Tibia influences the flexion and extension spaces and establishes a platform for the subsequent arthroplasty. The surgeon must recognize severe proximal tibial bone loss, and recreate the appropriate height to allow for proper component placement and gap balancing. With contained defects, the goal is to obtain firm seating of the tibial tray on a rim of viable bone along with rigid press fixation of an intramedullary stem. Likewise, femoral condyle bone loss can influence femoral component's size and sagittal position. The joint line is an average of 25 mm from the lateral epicondyle and 30 mm from the medial epicondyle; the distance from the epicondyles to the posterior joint line is similar to the distal joint line and is helpful in confirming the correct femoral component size.

Adjustments to ensure correct femoral component rotation usually require augmentation of the posterolateral condyle; additional modification to the position and size of the femoral component may be needed as the flexion and extension gaps are balanced. Once the gaps are equal and stable, the tibial polyethylene is correctly sized.

If there is functional loss of the medial or lateral collateral ligaments, soft tissue instability, inability to balance the flexion and extension spaces, or a severe valgus deformity, then a constrained condylar prosthesis is necessary.

Defect Type			Treatment Options
<i>Clatworthy classification</i>	<i>Engl classification</i>	<i>Rand classification</i>	
Contained, undamaged metaphysis	1	<5 mm depth, <50% unicondylar/plateau involvement	Prosthetic component translation, PMMA fill, morcelized allograft, autograft
Contained undamaged metaphysis	2a	5-10 mm depth, >50% unilateral condylar/plateau involvement	Morcelized allograft or metal augments
Contained undamaged metaphysis	2a	10-20 mm depth, unicondylar/plateau involvement	Metal augments, metaphyseal sleeves, structural allografts
Contained undamaged metaphysis	2b	<20mm depth, bicondylar/plateau involvement	Metal augments (full block in tibia), metaphyseal sleeves, structural allografts
Uncontained damaged metaphysis	2b	<20mm depth, bicondylar/plateau involvement	TM cones, structural allografts, custom-made prostheses
Uncontained damaged metaphysis	3	>20 mm depth	Structural allografts, megaprotheses, custom-made prostheses, TM cones

Table 4. Surgical algorithm according to bone defect size.

6. Patellar bone loss

Compromised patellar bone stock poses significant technical problems in primary and revision knee arthroplasty. In revision knee surgery bone deficiency is normally secondary to loosening of the patellar button and osteolysis that affects severely the patella. In primary cases it is rare that the patella has been so eroded that resurfacing is not possible.

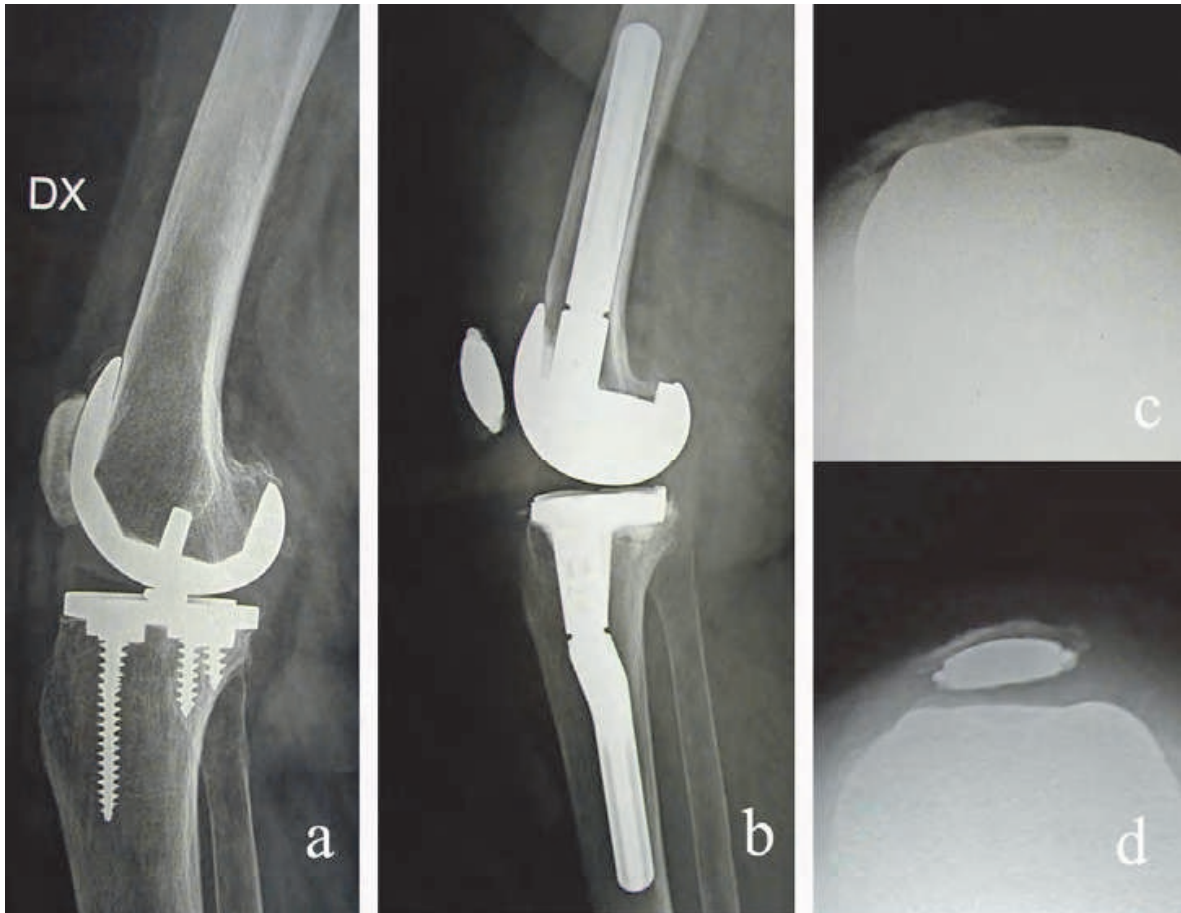


Fig. 11. (a,b) Lateral radiographs of total knee prosthesis revision, with patella extremely dug out, long and thin on preoperative. (c) Note lateral patella subluxation, and reestablishment of correct balancing after TMT patella prosthesis implantation.

This happens in severe patello-femoral arthritis or inflammatory arthropathy, when the patella may be thin and track laterally before and during arthroplasty. Treatment depends on the quality of the remaining bone stock and options include non-resurfacing, retention of the remaining thin patellar shell or total patellectomy (Pagnano et al., 1998). Nevertheless these solutions have been associated with lower functional results compared with resurfaced patella. A patellar bone grafting procedure has been described to provide patellar bone for possible future revision (Hassen, 2001). The “gull wing” patellar osteotomy (Kelly et al., 2002) has also been proposed in case of low demand patients, whereas in some cases it is possible to rebuild a damaged patella with K-wires in a reinforcing configuration to support the pegs of the patellar implant using the so called “rebar” technique (Tigani et al, 2009). Trabecular metal patella represents a viable therapeutic option for severe damaged patella; we experienced use with this technique (Tigani et al., 2009) in revision cases with more than 50% amount of residual bone, obtaining reliable bony fixation despite the quality of residual bone (Fig. 11).

We therefore exclude TM patella in cases of previous patellectomy, where soft tissue have to be used for fixation of the TM implant, because of reported migration and loosening of the implant in these difficult cases.

7. Intramedullary stems

In revision total knee arthroplasty, the mechanical stability of the femoral and tibial components is increased by the addition of intramedullary stems. Whatever solution is indicating to compensate bone loss, the use of an extended femoral and tibial stems reduce the stress forces on the metaphyseal region and bone-implant interface. Stem extensions, with or without offset, can supplement fixation, decrease stress at the bone-implant interface, and help address asymmetric bone defects. Offset stems can assist with implant alignment on the metaphysis, reducing the incidence of coronal or sagittal components malalignment and helping balance the flexion and extension spaces by effectively translating the components.

The stem ability to protect the proximal tibia or distal femur has been demonstrated in a laboratory setting using finite element model and cadaver models. Brooks et al used stems in conjunction with various bone augmentation techniques for defect in the proximal tibia: they suggested that a 70-mm stem carried from 23% to 38% of the axial load (Brooks et al., 1984).

A finite element analysis has revealed that the predicted bone loss is even greater in stemmed components compared to stemless ones; this may have consequences to discouraged routine use of stems in revision TKA (van Lenthe et al., 2002). Nevertheless Stern and Insall (Stern & Insall, 1992) advocates routine use of stemmed components in revision TKA. Engh et al used femoral stems mainly to protect large structural grafts in revision TKA (Engh et al., 1997). Meneghini et al. advise the use of cemented stemmed extension to maximize early implant fixation and allow for successful biologic ingrowth of the TM cones into the remaining part of the bone (Meneghini et al., 2008). We recommend to add stem extensions when using metal augments to decrease stress at the bone-implant interface.

Cemented stems allow for intraoperative adjustment with unusual anatomy and achieve fixation in large canals and osteopenic bone (Murray et al., 1994). The main disadvantages are that they are difficult to remove if revision is necessary and since they are not canal filling, they do not guarantee alignment (Parsley et al., 2003). Cementless press-fit stem extensions are easy to use and facilitate component alignment, and diaphyseal engaging stems ensure fixation (Radnay & Scuderi, 2006). In our practice with stemmed components of TKA, we prefer to use hybrid fixation in both femur and tibia, with proximal cementation just in the metaphyseal area as usual. In fact, Jazrawi et al. demonstrated in a cadaveric study that a press-fit modular cementless stem could achieve equivalent stability than a somewhat shorter fully cemented stem (Jazrawi et al., 2001), whereas Albrektsson et al. showed with radiostereogrammetric analysis that a long cementless stem provide optional stability (Albrektsson et al., 1990).

8. Future perspectives

We verified that treatment of bone defects associated with knee prosthetic surgery include many different surgical techniques and options, each with specific disadvantages and complications. Generally, in the elderly bone loss should be accomplished using artificial materials, while in younger patients, therapy should be addressed to regeneration of new bone as a foundation for future revision procedures. So that, an ideal bone substitute should possess osteogenic, osteoinductive and osteoconductive potential.

The “osteogenic” potential of the graft corresponds to capacity of cells living within the donor graft to survive during transplantation, then proliferate and differentiate to osteoblasts and eventually to osteocytes. “Osteoinduction” on the other hand is the stimulation and activation of host mesenchymal stem cells from the surrounding tissue, which differentiate into bone-forming osteoblasts. This process is mediated by a cascade of signals and the activations of several extra and intracellular receptors the most important of which belong to the TGF-beta family (Cypher & Grossman, 1996). “Osteoconduction” describes the facilitation and orientation of blood-vessel and the creation of the new Haversian systems into the bone scaffold. Finally these three properties together allow “osteointegration” between the host bone and the grafting material surfaces (Giannoudis et al., 2005).

The gold standard for regeneration of new bone is autologous bone graft, which contains a scaffold, osteoblasts, and the necessary signalling proteins and molecules. However, autograft is of limited availability and may be insufficient due to poor quality (eg, osteoporosis). Furthermore, it may fail in clinical practice as most of the cellular (osteogenic) elements do not survive transplantation (Sandhu et al., 1999).

Thus alternatives to autograft bone have emerged. Perhaps the most common bone substitute is cancellous allograft, which is osteoconductive only, and rely on a viable vascularized bone bed for incorporation. Moreover bone graft provided by musculoskeletal tissue bank could provoke immune response and transmission of viral disease; the processing of allograft tissue lowers this risk but can significantly weaken the biologic and mechanical properties initially present in the bone tissue (Giannoudis et al., 2005).

Bone substitutes could be used to replenish lost bone stock during total knee arthroplasty. A bone-graft substitute to be useful should be: osteoconductive, osteoinductive, biocompatible, bio-resorbable, structurally similar to bone, easy to use, and cost-effective (Giannoudis et al., 2005).

Recombinant growth factors such as bone morphogenetic proteins (BMPs) have osteoinductive capacity (Greenwald et al., 2001). Nevertheless because they are powerful in small amounts, and they are expensive, their indication in knee prosthetic surgery is still limited. Contrary platelet rich plasma (PRP) is largely available as it is prepared from centrifugation of autologous blood; it is an osteopromotive adjunct with the ability to enhance natural bone formation by stimulatory signals. Both BMPs and PRP need a scaffold to support their bone regeneration properties.

Demineralized bone matrix (DBM) corresponds to portion of bone without the mineral phases, extracted by strong acids (Peterson et al., 2004). The demineralization process leaves behind the growth factors, the noncollagenous proteins and collagen, and therefore DBM is osteoconductive and osteoinductive. However, few prospective, randomized clinical studies delineate the efficacy of DBM, and the material can be costly.

Nowadays many synthetic substitutes are available, used either alone or in combination with other biologic adjuncts. Synthetic bone graft materials available include calcium sulphates, special glass ceramics (bioactive glasses) and calcium phosphates. Calcium phosphate-based implants have the most similar composition to human bone, in particular those made of hydroxyapatite (HA) (Paderni et al., 2009). HA-based substitutes provide an osteoconductive scaffold to which mesenchymal stem cells and osteoinductive growth factors can migrate and differentiate into functioning osteoblasts (Fujishiro et al., 2005). These materials can be sterilized and are moldable, but generally do not have sufficient mechanical properties to support full immediate weight bearing.

Despite of being osteoconductive, the HA is not osteoinductive: in order to achieve a satisfying bone ingrowth, further factors could be added, such as multipotential stromal stem cells or PRP growth factors (Boyde et al., 1999), in order to favour and accelerate bone regeneration. Nowadays, combination of mature stromal cells and HA-based scaffolds represent an useful tissue regeneration approach to be used in a clinical setting: unfortunately, only few papers describe the clinical use of massive graft made of HA-based scaffolds (Marcacci et al., 2007) and long-term comparative studies are needed to evaluate their clinical effectiveness (Table 5).

Material	Osteoconduction	Osteoinduction	Osteogenesis	Notes
Bone autograft	+++	++	++	Gold standard: all elements for bone regeneration
Bone allograft	Structural	+++	\	Fresh frozen allografts show better mechanical properties than freeze-dried ones.
	Morcelised	+	\	
Bone morphogenetic proteins (BMPs)	\	+++	+	Potentially limited availability. Scaffold is needed
Platelet-rich plasma (PRP)	\	++	++	Large availability. Scaffold is needed
Demineralized bone matrix (DBM)	++	+	\	High cost
Hydroxyapatite (HA)	++	\	\	Immediate structural support
Composite grafts: BMPs+HA	+++	+++	+++	Good perspective in the future

Table 5. Different materials available as bone substitutes and their respective biologic properties.

9. Conclusions

As the incidence of primary and revision total knee arthroplasty will continue to increase, proper management of femoral and tibial bone loss represents a common situation that have to be faced by the orthopedic surgeon. The choice between different surgical options depends on dimension and characteristics of bone defect but are also patient-related.

Whatever technique is used in the management of bone loss during knee arthroplasty, certain fundamentals must be applied and the remaining bone structure will guide treatment. For treatment of any periarticular defect requiring more than a minimal

prosthetic augment, it is imperative to use stemmed components to transfer stress away from the joint line. Reestablishment of well-aligned and stable implants is necessary for successful reconstruction, but this can't be accomplished without a sufficient restoration of an eventual bone loss.

10. Acknowledgment

We thank Mrs Mariapia Cumani for graphical support.

The authors did not receive any outside funding or grants in support of their research or for preparation of this work.

11. References

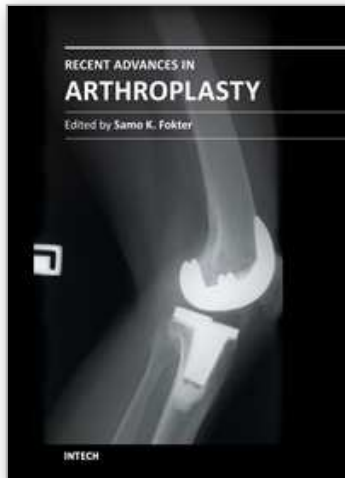
- Albrektsson, B.E.; Ryd, L.; Carlsson, L.V.; Freeman, M.A.; Herberts, P.; Regnér, L. & Selvik, G. (1990). The effect of a stem on the tibial component of knee arthroplasty. A roentgen stereophotogrammetric study of uncemented tibial components in the Freeman-Samuelson knee arthroplasty. *J Bone Joint Surg Br*, Vol.72, No.2, (March 1990), pp. 252-8, ISSN 0301-620X
- Backstein, D.; Safir, O. & Gross, A. (2006). Management of bone loss: structural grafts in revision total knee arthroplasty. *Clin Orthop Relat Res*, Vol.446, (May 2006), pp.104-12, ISSN 1528-1132
- Bobyn, J.D.; Stackpool, G.J.; Hacking, S.A.; Tanzer, M. & Krygier, J.J. (1999). Characteristics of bone ingrowth and interface mechanics of a new porous tantalum biomaterial. *J Bone Joint Surg Br*, Vol.81, No.5, (September 1999), pp.907-14, ISSN 0301-620X
- Boyde, A.; Corsi, A.; Quarto, R.; Cancedda, R. & Bianco, P. (1999). Osteoconduction in large macroporous hydroxyapatite ceramic implants: evidence for a complementary integration and disintegration mechanism. *Bone*, Vol.24, No.6, (June 1999), pp.579-89, ISSN 1873-2763
- Brooks, P.J.; Walker, P.S. & Scott, R.D. (1984). Tibial component fixation in deficient tibial bone stock. *Clin Orthop Relat Res*, Vol.184, (April 1984), pp.302-8, ISSN 1528-1132
- Clatworthy, M. & Gross, A.E. (2003). Management of bony defects in revision total knee arthroplasty. In: *The Adult Knee*, JJ Callaghan, AG Rosenberg, HE Rubash, PT Simonian, TL Wickiewicz, (Eds.), 1455-64, Lippincott Williams & Wilkins, ISBN 0-7817-3247-6, Philadelphia, PA
- Cypher, T.J. & Grossman, J.P. (1996). Biological principles of bone graft healing. *J Foot Ankle Surg*, Vol.35, No.5, (September-October 1996), pp.413-7, ISSN 0449-2544
- De Long, W.G. Jr; Einhorn, T.A.; Koval, K.; McKee, M.; Smith, W.; Sanders, R. & Watson, T. (2007). Bone grafts and bone graft substitutes in orthopaedic trauma surgery. A critical analysis. *J Bone Joint Surg Am*, Vol.89, No.3, (March 2007), pp.649-58, ISSN 1535-1386
- Dorr, L.D.; Ranawat, C.S.; Sculco, T.A.; McKaskill, B. & Orisek, B.S. (1986). Bone graft for tibial defects in total knee arthroplasty. *Clin Orthop Relat Res* Vol.205, (April 1986), pp.153-65, ISSN 1528-1132
- Engh, G.A. & Ammeen, D.J. (1999). Bone loss with revision total knee arthroplasty: defect classification and alternatives for reconstruction. *Instr Course Lect*, Vol.48, (1999), pp.167-75, ISSN 0065-6895

- Engh, G.A. & Ammeen, D.J. (2007). Uses of structural allograft in revision total knee arthroplasty in knees with severe tibial bone loss. *J Bone Joint Surg Am*, Vol.89, No.12, (December 2007), pp.2640-7, ISSN 1535-1386
- Engh, G.A.; Herzworm, P.J. & Parks, N.L. (1997). Treatment of major defects of bone with bulk allografts and stemmed components during total knee arthroplasty. *J Bone Joint Surg Am*, Vol.79, No.7, (July 1997), pp.1030-9, ISSN 1535-1386
- Freeman, M.A.; Bradley, G.W. & Revell, P.A. (1982). Observations upon the interface between bone and polymethylmethacrylate cement. *J Bone Joint Surg Br*, Vol.64, No.4, (1982), pp.489-93, ISSN 0301-620X
- Fujishiro, T.; Nishikawa, T.; Niikura, T.; Takikawa, S.; Nishiyama, T.; Mizuno, K.; Yoshiya, S. & Kurosaka, M. (2005). Impaction bone grafting with hydroxyapatite: increased femoral component stability in experiments using Sawbones. *Acta Orthop*, Vol.76, No.4, (August 2005), pp.550-4, ISSN 1745-3682
- Giannoudis, P.V.; Dinopoulos, H. & Tsiridis, E. (2005). Bone substitutes: an update. *Injury*, Vol.36, Suppl 3, (November 2005), pp.20-7, ISSN 1879-0267
- Greenwald, A.S.; Boden, S.D.; Goldberg, V.M.; Khan, Y.; Laurencin, C.T. & Rosier, R.N. (2001). Bone-graft substitutes: facts, fictions and application. *J Bone Joint Surg Am*. Vol.83, Suppl 2 Pt 2, (2001), pp.98-103, ISSN 1535-1386
- Haidukewych, G.J.; Hanssen, A. & Jones, R.D. (2011). Metaphyseal fixation in revision total knee arthroplasty: indications and techniques. *J Am Acad Orthop Surg*. Vol.19, No.6, (June 2011), pp.311-8, ISSN 1067-151X
- Hassen, A. (2001). Bone-grafting for severe patellar bone loss during revision knee arthroplasty. *J Bone J Surg Am*, Vol.83, No.2, (February 2001), pp.171-6, ISSN 1535-1386
- Insall, J.N. & Easley, M.E. (2001). Surgical techniques and instrumentation in total knee arthroplasty. In: *Surgery of the knee*, JN Insall, WN Scott (Eds.), ISBN 978-0-443-06682-5, Churchill-Livingstone, New York
- Jazrawi, L.M.; Bai, B.; Kummer, F.J.; Hiebert, R. & Stuchin, S.A. (2001). The effect of stem modularity and mode of fixation on tibial component stability in revision total knee arthroplasty. *J Arthroplasty*, Vol.16, No.6, (September 2001), pp.759-67, ISSN 1532-8406
- Kelly, M.A. (2004). Extensor mechanism complications in total knee arthroplasty. *Instr Course Lect*, Vol.53, (2004), pp.193-9, ISSN 0065-6895
- Laskin, R.S. (1989). Total knee arthroplasty in the presence of bony defects of the tibia and marked knee instability. *Clin Orthop Relat Res*, Vol.248, (November 1989), pp.66-70, ISSN 1528-1132
- Levine, B.; Sporer, S.; Della Valle, C.J.; Jacobs, J.J. & Paprosky, W. (2007). Porous tantalum in reconstructive surgery of the knee: a review. *J Knee Surg*, Vol.20, No.3, (July 2007), pp.185-94, ISSN 1938-2480
- Lombardi, A.V.; Berend, K.R. & Adams, J.B. (2010). Management of bone loss in revision TKA: it's a changing world. *Orthopedics*, Vol.33, No.9, (September 2010), pp.662, ISSN 1938-2367
- Lotke, P.A.; Wong, R.Y. & Ecker, M.L. (1991). The use of methylmethacrylate in primary total knee replacements with large tibial defects. *Clin Orthop Relat Res*, Vol.270, (September 2001), pp.288-94, ISSN 1528-1132

- Lucey, S.D.; Scuderi, G.R.; Kelly, M.A. & Insall, J.N. (2000). A practical approach to dealing with bone loss in revision total knee arthroplasty. *Orthopedics*, Vol.23, No.10, (October 2000), pp.1036-41, ISSN 1938-2367
- Marcacci, M.; Kon, E.; Mukhacev, V.; Lavroukov, A.; Kutepov, S.; Quarto, R.; Mastrogiacomo, M. & Cancedda, R. (2007). Stem cells associated with macroporous bioceramics for long bone repair: 6 to 7-year outcome of a pilot clinical study. *Tissue Eng*. Vol.13, No.5, (May 2007), pp.947-955, ISSN 1557-8690
- Meneghini, R.M.; Lewallen, D.G. & Hanssen, A.D. (2008). Use of porous tantalum metaphyseal cones for severe tibial bone loss during revision total knee replacement. *J Bone Joint Surg Am*, Vol.9, No. 1, January 2008, pp.78-84, ISSN 1535-1386
- Mounasamy, V.; Ma, S.Y.; Schoderbek, R.J.; Mihalko, W.M.; Saleh, K.J. & Brown, T.E. (2006). Primary total knee arthroplasty with condylar allograft and MCL reconstruction for a comminuted medial condyle fracture in an arthritic knee-a case report. *Knee*, Vol.13, No.5, (October 2006), pp.400-3, ISSN 1873-5800
- Murray, P.B.; Rand, J.A. & Hanssen, A.D. (1994). Cemented long-stem revision total knee arthroplasty. *Clin Orthop Relat Res*, Vol.309, (December 1994), pp.116-23, ISSN 1528-1132
- Paderni, S.; Terzi, S. & Amendola, L. (2009). Major bone defect treatment with an osteoconductive bone substitute. *Chir Organi Mov*, Vol.93, No.2, (September 2009), pp.89-96, ISSN 1973-2538
- Pagnano, M.W.; Scuderi, G.R. & Insall, J.N. (1998). Patellar component resection in revision and reimplantation TKA. *Clin Orthop Relat Res*, Vol.356, (November 1998), pp.134-8, ISSN 1528-1132
- Pagnotto, M.; Fedorka, C.J.; McGough, R.L.; Crossett, L.S. & Klatt, B.A. (2011). Revision total knee replacement with porous-coated metaphyseal sleeves. Paper. In: *AAOS 2011 Annual Meeting*, San Diego, February 2011
- Parsley, B.S.; Sugano, N.; Bertolusso, R. & Conditt, M.A. (2003). Mechanical alignment of tibial stems in revision total knee arthroplasty. *J Arthroplasty*. Vol.18, Suppl 1, (October 2003), pp.33-6, ISSN 1532-8406
- Peterson, B.; Whang, P.G.; Iglesias, R.; Wang, J.C. & Lieberman, J.R. (2004). Osteoconductivity of commercially available demineralized bone matrix. *J Bone Joint Surg Am*. Vol.86, No.10, (October 2004), pp.2243-50, ISSN 1535-1386
- Radnay, C.S. & Scuderi, G.R. (2006). Management of bone loss: augments, cones, offset stems. *Clin Orthop Relat Res*, Vol.446, (May 2006), pp.83-92, ISSN 1528-1132
- Rand, J.A. (1991). Bone deficiency in total knee arthroplasty. Use of metal wedge augmentation. *Clin Orthop Relat Res*, Vol.271, (October 1991), pp.63-71, ISSN 1528-1132
- Rand, J.A. (1998). Modular augments in revision total knee arthroplasty. *Orthop Clin North Am*, Vol. 29, No.2, (April 1998), pp.347-53, ISSN 1558-1373
- Reish, T.G.; Clarke, H.D.; Scuderi, G.R.; Math, K.R. & Scott, W.N. (2006). Use of multi-detector computed tomography for the detection of periprosthetic osteolysis in total knee arthroplasty. *J Knee Surg*, Vol.19, No.4, (October 2006), pp.259-64, ISSN 1938-2480

- Ritter, M.A.; Keating, E.M. & Faris, P.M. (1993). Screw and cement fixation of large defects in total knee arthroplasty. A sequel. *J Arthroplasty*, Vol.8, No.1, (February 1993), pp.63-5, ISSN 1532-8406
- Sandhu, H.S.; Grewal, H.S. & Parvataneni, H. (1999). Bone grafting for spinal fusion. *Orthop Clin North Am*, Vol.30, No.4, (October 1999), pp.685-98, ISSN 1558-1373
- Scuderi, G.R.; Insall, J.N. & HaasSB. (1989). Inlay autogenic bone grafting of tibial defects in primary total knee arthroplasty *Clin Orthop Relat Res*, Vol.248, (November 1989), pp.93-7
- Stern, S.H. & Insall, J.N. (1992). Posterior stabilized prosthesis. Results after follow-up of nine to twelve years. *J Bone Joint Surg Am*, Vol.74, No.7, (August 1992), pp.980-6, ISSN 1535-1386
- Tigani, D.; Dallari, D.; Coppola, C.; Ben Ayad, R.; Sabbioni, G. & Fosco, M. (2011). Total knee arthroplasty for post-traumatic proximal tibial bone defect: three cases report. *Open Orthop J*, Vol.14, No.5, (April 2011), pp.143-50, ISSN 1874-3250
- Tigani, D.; Trentani, P.; Trentani, F.; Andreoli, I.; Sabbioni, G. & Del Piccolo, N. (2009). Trabecular metal patella in total knee arthroplasty with patella bone deficiency. *Knee*, Vol.16, No.1, (January 2009), pp.46-9, ISSN 1873-5800
- Tigani, D.; Trentani, P.; Trentani, F.; Marinelli, A.; Bianchi, G. & Fravisini, M. (2004). The treatment of bone defects in primary arthroplasty of the knee. *Chir Organi Mov*, Vol.89, No.1, (January-March 2004), pp.29-33, ISSN 1973-2538
- van Lenthe, G.H.; Willems, M.M.; Verdonschot, N.; de Waal Malefijt, M.C. & Huiskes, R. (2002). Stemmed femoral knee prostheses: effects of prosthetic design and fixation on bone loss. *Acta Orthop Scand*, Vol.73, No.6, (December 2002), pp.630-7, ISSN 0001-6470
- Van Loon, C.J.; de Waal Malefijt, M.C.; Buma, P.; Verdonschot, N. & Veth, R.P. (1999). Femoral bone loss in total knee arthroplasty. A review. *Acta Orthop Belg*, Vol.65, No.2, (June 1999), pp.154-63, ISSN 0001-6462

IntechOpen



Recent Advances in Arthroplasty

Edited by Dr. Samo Fokter

ISBN 978-953-307-990-5

Hard cover, 614 pages

Publisher InTech

Published online 27, January, 2012

Published in print edition January, 2012

The purpose of this book was to offer an overview of recent insights into the current state of arthroplasty. The tremendous long term success of Sir Charnley's total hip arthroplasty has encouraged many researchers to treat pain, improve function and create solutions for higher quality of life. Indeed and as described in a special chapter of this book, arthroplasty is an emerging field in the joints of upper extremity and spine. However, there are inborn complications in any foreign design brought to the human body. First, in the chapter on infections we endeavor to provide a comprehensive, up-to-date analysis and description of the management of this difficult problem. Second, the immune system is faced with a strange material coming in huge amounts of micro-particles from the tribology code. Therefore, great attention to the problem of aseptic loosening has been addressed in special chapters on loosening and on materials currently available for arthroplasty.

How to reference

In order to correctly reference this scholarly work, feel free to copy and paste the following:

Matteo Fosco, Rida Ben Ayad, Luca Amendola, Dante Dallari and Domenico Tigani (2012). Management of Bone Loss in Primary and Revision Knee Replacement Surgery, *Recent Advances in Arthroplasty*, Dr. Samo Fokter (Ed.), ISBN: 978-953-307-990-5, InTech, Available from: <http://www.intechopen.com/books/recent-advances-in-arthroplasty/management-of-bone-loss-in-primary-and-revision-knee-replacement-surgery>

INTECH
open science | open minds

InTech Europe

University Campus STeP Ri
Slavka Krautzeka 83/A
51000 Rijeka, Croatia
Phone: +385 (51) 770 447
Fax: +385 (51) 686 166
www.intechopen.com

InTech China

Unit 405, Office Block, Hotel Equatorial Shanghai
No.65, Yan An Road (West), Shanghai, 200040, China
中国上海市延安西路65号上海国际贵都大饭店办公楼405单元
Phone: +86-21-62489820
Fax: +86-21-62489821

© 2012 The Author(s). Licensee IntechOpen. This is an open access article distributed under the terms of the [Creative Commons Attribution 3.0 License](#), which permits unrestricted use, distribution, and reproduction in any medium, provided the original work is properly cited.

IntechOpen

IntechOpen