

We are IntechOpen, the world's leading publisher of Open Access books Built by scientists, for scientists

4,800

Open access books available

122,000

International authors and editors

135M

Downloads

Our authors are among the

154

Countries delivered to

TOP 1%

most cited scientists

12.2%

Contributors from top 500 universities



WEB OF SCIENCE™

Selection of our books indexed in the Book Citation Index
in Web of Science™ Core Collection (BKCI)

Interested in publishing with us?
Contact book.department@intechopen.com

Numbers displayed above are based on latest data collected.

For more information visit www.intechopen.com



MALDI-MSI and Ovarian Cancer Biomarkers

Rémi Longuespee¹, Charlotte Boyon^{1,2}, Olivier Kerdraon³, Denis Vinatier²,
Isabelle Fournier¹, Robert Day⁴ and Michel Salzet¹

¹Université Nord de France, Laboratoire de Spectrométrie de Masse Biologique
Fondamentale et Appliquée, Université de Lille 1, Cité Scientifique, Villeneuve d'Ascq

²Hôpital Jeanne de Flandre, service de Chirurgie Gynécologique, Lille

³Laboratoire d'Anatomie et de Cytologie Pathologiques, Lille

⁴Institut de pharmacologie de Sherbrooke, Université de Sherbrooke, Sherbrooke, Québec

^{1,2,3}France

⁴Canada

1. Introduction

Early diagnostic and disease management is one of the most important challenges facing modern medicine, which is particularly relevant in cancer. The lack of effective assays measuring multiple blood-based biomarkers is lacking in many types of cancer. Moreover, transforming a biomarker into a useful clinical diagnostic test is a complex process, which starts with identification, proceeds through validation, but also requires extensive performance testing metrics (i.e., sensitivity, specificity, positive and negative predictive values, false positive and false negative rates, inter-test reliability and test/retest reliability). Identification can be carried out by various means (gene arrays, purification procedures, proteomics), that focus on observed changes of the marker correlated with the disease progression, either in the tissue/tumor or in a body fluid. Many of these methodologies attempt to identify markers in a non-spatial context, for example in tissue extracts, which results in a higher likelihood of obtaining false positives, which are then discovered as such through further validation methods. To avoid these problems or to validate the potential biomarkers several approaches are used including the development of specific antibodies, using protein microarrays or including more refined techniques to include tissue laser dissection. The process is long, arduous and lacks predictive power. Additionally, these methods often require large amounts of material, such as would occur in studies of tumour tissues. Ideally, the direct detection of a protein within spatial context would provide the best chances of rapidly identifying a potential and useable biomarker. One of the most powerful mass spectrometry applications known to date, MALDI mass spectrometry imaging (MALDI-MSI) ¹ does just that. This technology is a major new alternative that combines both biomarker identification and validation in a single step^{1, 2}. It has recently successfully been used for *in situ* tracking of biomarkers, as predictors of cancer aggressiveness, and for improved therapeutic strategies^{1,3-11}

2. MALDI Mass Spectrometry Imaging (MALDI-MSI)

Over these past ten years, important technical improvements in mass spectrometry instrumentation together with the growing importance of this method for compound identification had lead to the development of *direct analysis* of tissue samples. Mass spectrometry has become an analytical tool allowing identification of compounds directly from tissues without any extraction or separation and adding the essential and time saving spatial resolution to the analysis. Furthermore, in a single experiment, molecular information on hundreds of chemical or biological molecules can be retrieved. By automation of this method and powerful data processing, molecular maps are generated from single tissue sections. Another major advantage is the sensitivity of mass spectrometry instruments giving access to hundreds of compound molecular images after one set acquisition. Matrix-assisted laser desorption/ionization (MALDI) ion sources are well suited for this application as they can provide data on a range of biomolecular families ranging from small molecule drugs, peptides, proteins, oligonucleotides, sugars or lipids with a spatial resolution that approaches near cellular resolution. MALDI-imaging mass spectrometry (MALDI-MSI) was first introduced by Caprioli and coll.¹² but major improvements have been developed in by other groups seeking to improve sample preparations, instrumentation, image spatial resolution, as well as develop new fields of applications^{2,12-14}. For example, MALDI-MSI technology has been used for biomarkers hunting, drug biodistribution tissue interactions in drug discovery as well as for the molecular diagnosis through biopsy analyses in pathology. The translational nature of this technology provides unique challenges and as yet unimagined opportunities that promise to transform the way disease is detected, treated, and managed.

Rather than focusing on genetic alterations that may lead to a particular disease, it is emerging that changes in protein expression patterns are the most accurate way to identify diseases in their early stages and to determine the most effective course of treatment. Indeed, genome sequences fails to provide certainty for post-translational modification events such as glycosylation, phosphorylation, acylation or partial proteolysis. One of the most common objectives in proteomics is the study of protein expression patterns (e.g., protein profiling) associated with diseases. Pathologies that cause changes in signal transduction pathways generally result in changes in specific cell phenotypes. Using MALDI-MSI in this context does not have knowledge prerequisite of the studied system due to the non-targeted nature of the analysis. Such data leads to the establishment of a classification of cell phenotypic changes at the molecular level and in this way can provide a better understanding of pathologies, can lead to new diagnostic biomarkers or even new therapeutic targets. The capacity of generating multidimensional pictures with a spatial resolution that can approach the cellular level, allows monitoring, in the same analysis, of the localization of drugs compounds and the changes in biomarkers expression².

In the context of the present discussion, there is a single clear advantage of MALDI-MSI, that is the spatial localization of identified compounds, that tremendously increases the predictive potential of which markers are most likely to be successful at the clinical level.

There are additional advantages to the MALDI-MSI approach for biomarker hunting. MALDI ion sources can identify a wide range of biomolecular families including small molecule drugs, peptides, proteins, sugars or lipids with a spatial resolutions that approaches the cellular level. Due to its high data acquisition, MALDI-MSI can permit the establishment of a classification of cell phenotypic changes at the molecular level, which can

be used to complement histology techniques. The correlation between molecular images obtained by MALDI-MSI and the ones obtained by pathologists using classical histochemistry can be inclusive of all grades, stages, cancer types, and cell types. However, differently from classic histochemistry, MALDI-MSI allows identification at the molecular level, in each cell type. Combined with powerful multivariate analyses like the hierarchical classification and principal component analyses (PCA)⁵, it is possible to identify biomarkers present in carcinoma region from one in a stromal area, from those in an interstitial region. Therefore, in a single analysis we can access multiple biomarkers present in a region of interest, characterize them *in situ*, without any tissue extraction. In regards to cancer tissues, which most often are high heterogeneous, the combination of MALDI-MSI and multivariate analyses are the most powerful and suited tools developed to date. Consequently, we propose that biomarkers uncovered using MALDI-MSI will be more clinically useful than those uncovered by standard methods, such as gene arrays or tissue extraction/fractionation, which lack spatial context. Other predictions also follow from this logic, as biomarkers are known for their potential roles in a disease's etiology. It therefore follows that they may well represent important therapeutic targets.

In the present chapter, we will focus on a single example, namely in ovarian, cancer, to establish the usefulness of MALDI MSI technology for tracking and validating new biomarkers.

3. Ovarian cancer

Ovarian cancer is the fourth leading cause of cancer death among women in Europe and the United States. Among biomarkers, cancer-antigen 125 (CA-125) is the most studied. CA-125 has a sensitivity of 80% and a specificity of 97% in epithelial cancer (stage III or IV, (Table 1, Figure 1)). However, its sensitivity is around 30% in stage I cancer, its increase is linked to

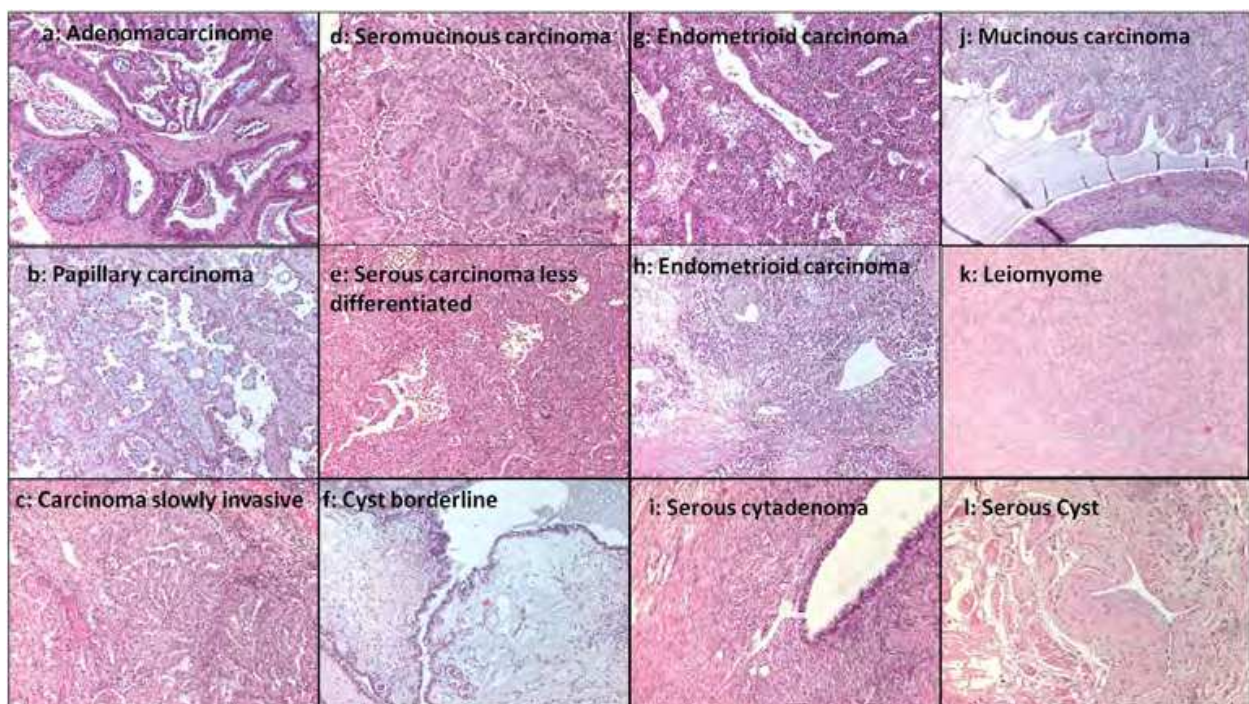


Fig. 1. Hematoxylin eosin staining of different type's of ovarian cancer and benign tissues.

several physiological phenomena and it is also detected in benign situations¹⁵. CA-125 is particularly useful for at-risk population diagnosis and following disease progression during therapeutic treatment. In this context, CA-125 is insufficient as a single biomarker for ovarian cancer diagnosis. The alternative is to identify additional biomarkers, using a proteomic strategy, that can better establish the diagnosis and prognosis in regards to the tumor stage (Table 2)¹⁶⁻²⁴. Presently, two strategies have been established. First has been the attempt to identify ovarian cancer markers in plasma SELDI-TOF profiling or chromatography coupled to mass spectrometry^{17,25-30}. Second, has been the development of classic proteomic strategies using comparative 2D-gels and mass spectrometry^{24,31-33} or using genomic methodologies (Table 3).

FIGO STAGE				
TNM	FIGO	Description	Prevalence	% of survey after 5 years treatment
TX		Non evaluable primitive Tumor		
T0		No ovarian lesion		
T1	Stage I	Tumor limited to the ovary	25%	
T1a	Ia	Unilateral, capsule intact, no ascite		80%
T1b	Ib	Bilateral, capsules intact, no ascite		75%
T1c	Ic	Limited to ovaries but presence of ascite		70%
T2	Stage II	Tumor limited to the pelvis	11%	
T2a	IIa	Extensions limited to the uterus and the ducts		60%
T2b	IIb	Extensions to the other pelvic issues		65%
T2c	IIc	Extensions to the other pelvic issues with ascites		65%
T3	Stage III	Tumor limited to the abdomen	47%	
T3a	IIIa	Peritoneal microscopic extension		40%
T3b	IIIb	Peritoneal implants less than 2 cm		25%
T3c	IIIc-p	Peritoneal implants more than 2cm		20%
N1	IIIc-g	Lymphatic ganglia colonized: sub-pelvis, para-aortic and inguinal		<10%
M1	Stage IV	Metastasis at distance and pleural effusion	17%	<10%

Table 1. Grading systems of epithelial carcinoma. FIGO 1995: Universal grading nomenclature.

Marker Name	Genomic	Proteomic	MALDI Imaging
Mesothelin-MUC16	99		
STAT3	99		
LPAAT- β (Lysophosphatidic acid acetyl transferase beta)	100		
Inhibin	101		
Kallikrein Family (9, 11, 13, 14)	102		5
Tu M2-PK	103		
<i>c</i> -MET	104-106		
MMP-2, MMP-9, MT1-MPP: Matrix metalloproteinase	107-109		5
EphA2	110-112		
PDEF (prostate-derived Ets factor)	63, 113		
IL-13	114		
MIF (Macrophage inhibiting factor)	63, 113		
NGAL (Neutrophil gelatinase-associated lipocalin)	115		5
CD46	116-118		
RCAS 1 (Receptor-binding cancer antigen expressed on SiSo cells)	64, 119		
Annexin 3	120		
Destrin	121, 122		
Cofilin-1		123	
GSTO1-1		121, 122	
IDHc		121, 122	
FK506 binding protein		124	
Leptin		125, 126	
Osteopontin		120	
insulin-like growth factor-II		127	
Prolactin		128	
78 kDa glucose-regulated protein		129	
Calreticulin		129	
Endoplasmic reticulum protein ERp29		129	
Endoplasmin		129	
Protein disulfideisomerase A3		129	
Actin, cytoplasmic 1		129	
Actin, cytoplasmic 2		129	
Macrophage capping protein		129	
Tropomyosin alpha 3 chain, alpha-4 chain		129	

Marker Name	Genomic	Proteomic	MALDI Imaging
Vimentin		129	5
Collagen alpha 1(VI) chain		129	
Dihydrolipoyllysineresidue succinyltransferase component of 2-oxoglutarate dehydrogenase		129	
Pyruvate dehydrogenase E1 component beta		129	
Superoxide dismutase [Cu-Zn]		129	
Chromobox protein homologue 5		129	
Lamin B1, B2		129	
14-3-3 protein		129	
Cathepsin B		129	
Heterogeneous nuclear ribonucleoprotein K		129	
Nucleophosmin		129	
Peroxiredoxin 2		129	
Prohibitin		129	
Receptor tyrosine-protein kinase erbB-3		129	
Fibrinogen gamma chain		129	
Splicing factor, arginine/serine-rich 5		129	
Elongation factor 1-beta		129	
Lysosomal protective protein		129	
Hemoglobin beta subunit		129	
Transitional endoplasmic reticulum ATPase		129	
Serum albumin		129	
Protein KIAA0586		129	
Similar to testis expressed sequence 13A		129	
SNRPF protein		129	
Fibrinogen gamma chain		129	
Transitional endoplasmic reticulum ATPase		129	
Heat shock 70 kDa protein 1, 60K protein		129	
Heterogeneous nuclear ribonucleoprotein K		129	
Keratin, type I cytoskeletal 7, 9, 18, 19 ?		129	5
Adenylosuccinate lyase		129	
Peroxiredoxin 2		129	
Glutathione S-transferase P		129	
Ras-related protein Rab-7		129	
Prohibitin		129	

Marker Name	Genomic	Proteomic	MALDI Imaging
Cathepsin B		129	
Heterogeneous nuclear ribonucleoprotein K		129	
Tumor protein D54		129	
Rho GDPdissociation inhibitor 1		129	
Annexin A2		129	
ATP synthase beta chain		129	
Heterogeneous nuclear ribonucleoprotein K		129	
Actin, cytoplasmic 1		129	
Heterogeneous nuclear ribonucleoprotein A/B		129	
Immunoprotease activator fragment 11 S			7
Mucin-9			5
Tetranectin			5
Urokinase plasminogen activator			5
Orosomucoid			5
S100-A2			5
S100-A11			5
Apolipoprotein A1			5
Transgelin			5
Prolargin			5
Lumican Precursor			5
Siderophilin			5
Alpha 1 antiprotease			5
Phosphatidyl Ethanolamine Binding Protein			5
Hemopexin			5
Profilin -1			5

Table 2. Biomarkers identified by genomic, classical proteomic or SELDI approaches.

Protein	Patient 1	Patient 2	Patient 3	Virus
VE2-HPV36	X		X	HPV
VE2-HPV39		X		HPV
VE6-HPV56			X	HPV
UL16-EBV	X	X	X	EBV
UL11-EBV	X	X	X	EBV

Table 3. Viral protein detected in patients tumor by NanoLC-IT MS/MS.

Our group has taken a different approach, attempting direct tissue analysis and peptide profiling followed by MALDI profiling and imaging^{1,3-11,34-38}. Ovarian carcinomas (stages III and IV) and benign ovaries were directly analyzed by MALDI-TOF-MS after three different treatments for proteins, high hydrophobic proteins and peptides extraction. Hierarchical clustering based on principal component analysis (PCA) as well as PCA-Symbolic Discriminant Analysis (SDA)³⁴ was carried out using ClinProTools software to classify tissues. Principal component analysis was used in the unsupervised mode to differentiate tumors and healthy spectra based on their proteomic composition as determined by MALDI-MSI. These characterized proteins can be grouped into functional categories such as cell proliferation, immune response modulation, signaling to the cytoskeleton, and tumor progression^{1,5,7,37}.

4. Proteins involved in immune response modulation

Recent studies have shown that ovarian cancer-associated ascites may provide an immunosuppressive environment³⁹ (**Figure 2**). A high CD4/CD8 ratio, which may indicate the presence of regulatory T-cells, is associated with poor outcomes. Recently, Clarke *et al.*⁴⁰ have validated in a cohort of 500 ovarian cancer patients that the presence of intraepithelial CD8+T-cells correlates with improved clinical outcomes for all stages of ovarian cancer. Curiel *et al.* demonstrated in 104 ovarian cancer patients that CD4+CD25+FoxP3+ Tregs suppress tumor-specific T-cell immunity and contribute to growth of the tumor *in vivo*⁴¹. These data point to a mechanism of immune suppression in ovarian cancer either by over-expression of Tregs or by the tumor itself by escaping the immune response by molecular mimicry or by escaping immunosurveillance^{42,43}. Additional evidence has reinforced the involvement of Tregs in ovarian cancer. CCL22, a protein secreted by dendritic cells and macrophages, highly expressed in tumor ascites is known to have a role in Treg cell migration in tumors⁴¹. Over-expression of the immunoregulatory enzyme indoleamine 2,3-dioxygenase (IDO) has also been demonstrated in ovarian cancer⁴⁴⁻⁴⁷. IDO suppresses the proliferation of effector T cells or natural killer cells and their killer functions^{45,48}. In ovarian cancer, high IDO expression in tumor cells was correlated with a reduced number of tumor-infiltrating lymphocytes⁴⁴. Reduced IL-2 and elevated TGF- β and IL-10 levels favor induced Tregs⁴⁹. On the other hand, tumor cells escape the immune response by inducing peripheral mature DCs to induce IL-10 CCR7+CD45RO+CD8+Tregs. Primary suppressive CCR7+CD45RO+CD8+ T cells are found in the tumor environment of patients with ovarian cancer⁵⁰. Another way that tumor cells escape immunosurveillance is through the expression of Human Leukocyte antigen (HLA-G)^{51,52,53} (Sheu, 2007 #5782). Recent studies have shown that the expression of HLA-G was detected in 22/33 (66.7%) primary tumor tissues, but was absent in normal ovarian tissues ($P < 0.01$). Cytotoxicity studies showed that HLA-G expression dramatically inhibits cell lyses by NK-92 cells ($P < 0.01$), which could be restored by the anti-HLA-G conformational mAb 87G ($P < 0.01$). HLGA-G5 type has been detected in tumor and soluble form of HLA-G in ascites^{54,55} and in the blood of patients⁵⁶. HLA-G seems to be implicated in the immune response modulation through NKT cell inhibition⁵⁷. In the tumor cells expressing a B7 costimulatory family molecule, B7H4 is known to inhibit antigen-dependent induction of T cell proliferation and activation. B7-H4 promotes the malignant transformation of epithelial cells by protecting them from apoptosis and seems to be expressed at an early stage of the tumor⁵⁸⁻⁶⁰. In the same way, tumor cells highly express the mesothelin-Mucin 16 (MUC16) which inhibits the formation of immune synapses between NK cells and ovarian tumor targets⁶¹.

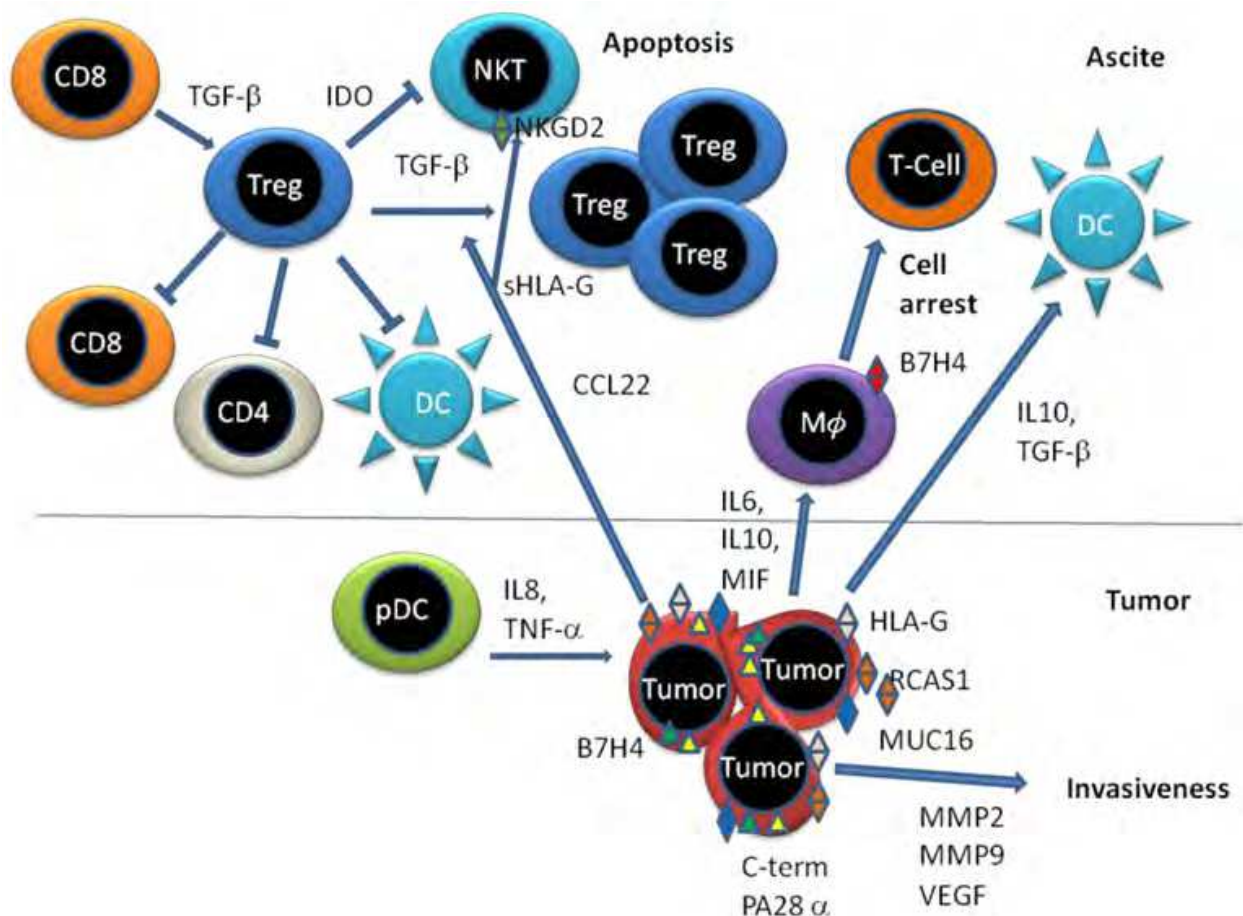


Fig. 2. Immune suppressive pathways in ovarian cancer.

Tregs are attracted to the tumor environment by CCL22 secreted by the tumor. Tregs inhibits CD4+, CD8+ via direct contact or by secretion of IL10 and TGF- β . NKT cells are inhibited by sHLA-G, MUC16, RCAS1 and MIF produced by the tumor and by IDO produced by Tregs. MIF acts through NKGD2 activation on NKT cells. The tumor environment expresses molecules that can convert functional APCs into dysfunctional ones. These dysfunctional APCs in turn stimulate Treg differentiation and expansion. The tumor produce IL6, IL8, pDcs are present in tumor environment and stimulate tumor growth by releasing TNF- α and IL8. IL6, IL10 are produced by Tregs and stimulate B7H4 expression in macrophages leading T-cell cycle arrest. IL10, TGF- β suppress APC function by inhibiting the expression of CD80, CD86.

Transcriptomic and proteomic studies performed at the level of the tumors confirm the active role of the tumor cells to escape the immune response. Transcriptomic studies have shown the over-expression of the macrophage migration inhibitory factor (MIF)^{62,63}, Receptor-binding cancer antigen expressed on SiSo cells⁶⁴ known to be implicated in lymphocytes apoptosis. MIF contributes to the inhibition of antitumoral CD8+ T and NK cells by down-regulation of NKGD2 (NK cell receptor NK group 2D)⁶⁵.

From our MALDI-MSI studies, five factors involved in immune response modulation in mucinous tumors have been identified, namely a C-terminal fragment of the 11S immunoproteasome (Reg-alpha) (**Figure 3**), orosomucoid, apolipoprotein A1, hemopexin, and lumican which have also been detected in ascites^{1,5,7,36,37}.

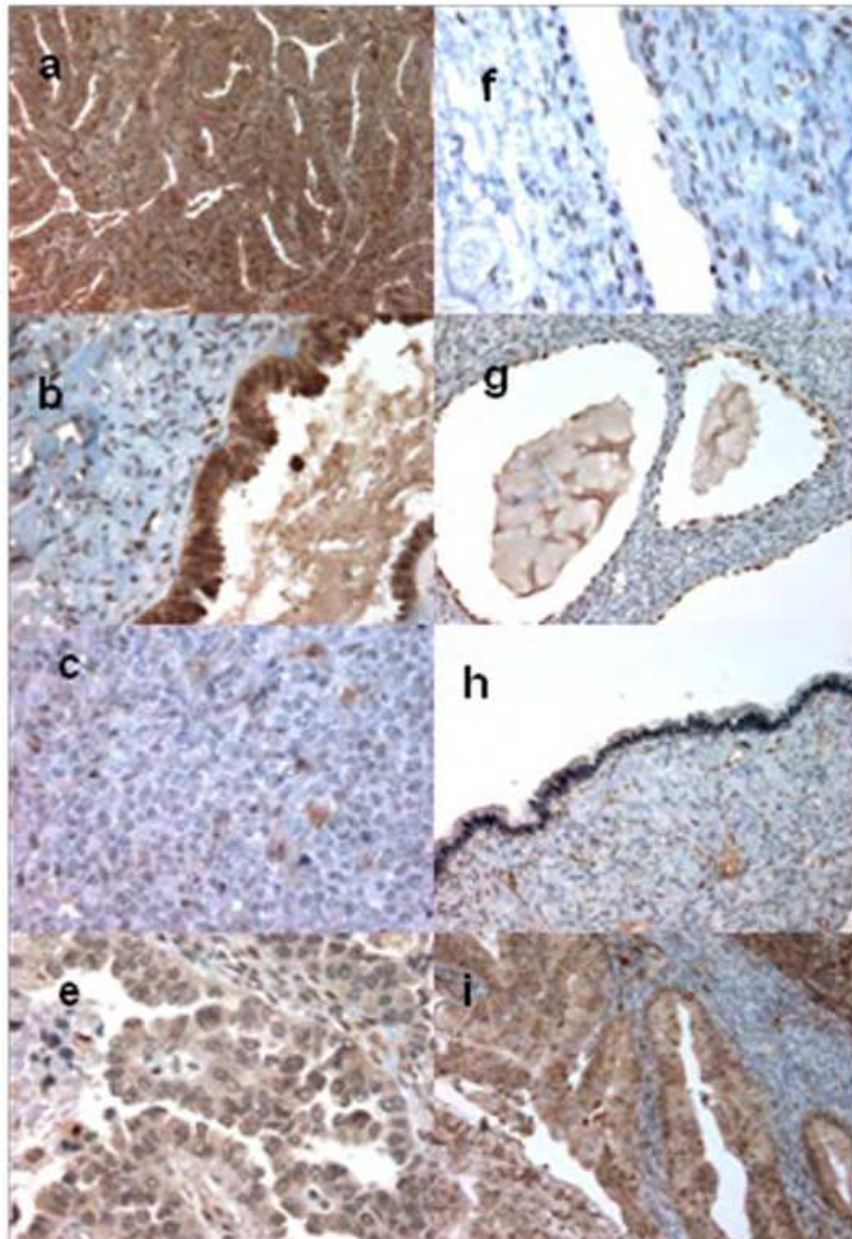


Fig. 3. Immunocytochemical studies with polyclonal antibody rose against the c-terminal part of Reg alpha.

- a. Epithelial cells of immunolabeled differentiated endometrioid carcinoma
- b. Epithelial cells of immunolabeled in carcinoma region
- c. Cytoplasmic epithelial cells immunolabeling of nondifferentiated endometrioid carcinoma.
- d. Epithelial cells of immunolabeled in clear cells adenocarcinoma (mesonephroma)
- e. Nuclear epithelial cells immunolabeling of benign tumor
- f. Nuclear epithelial cells immunolabeling of adenofibromatous tumor

PSME1 (proteasome activator complex subunit 1, 11S regulator complex [syn: PA28 alpha]) cleaved into the Reg-alpha fragment could lead to default self-antigen presentation⁷. PA28 is a regulatory complex associated with 20S proteasome that consists of 3 subunits: alpha, beta, and gamma⁶⁶. Binding of the 11S regulator complex to the 20S proteasome does not depend

on ATP hydrolysis and unlike the 19S regulatory subunit, the 11S regulator complex does not catalyze degradation of large proteins. Rather, it is responsible for MHC-class I antigen processing,⁶⁷⁻⁶⁹ which is greatly improved by interferon gamma-induced expression of the alpha and beta subunits⁷⁰.

Several viral proteins that interact with these proteasome subunits have been reported, and may interfere with host anti-viral defenses, thereby contributing to cell transformation⁷¹. The manner in which they bind to the core particle via its subunits' C-terminal tails, and induce an α -ring conformational change to open the 20S gate, suggests a mechanism similar to that of the 19S particle⁶⁶. No role in ovarian cancer has been demonstrated for the 11 S regulator complexes. Our data demonstrate a high level of expression of PA28 in carcinomas, especially in epithelial cells at stage III/ IV but also at early stages Ia (**Figure 4**).

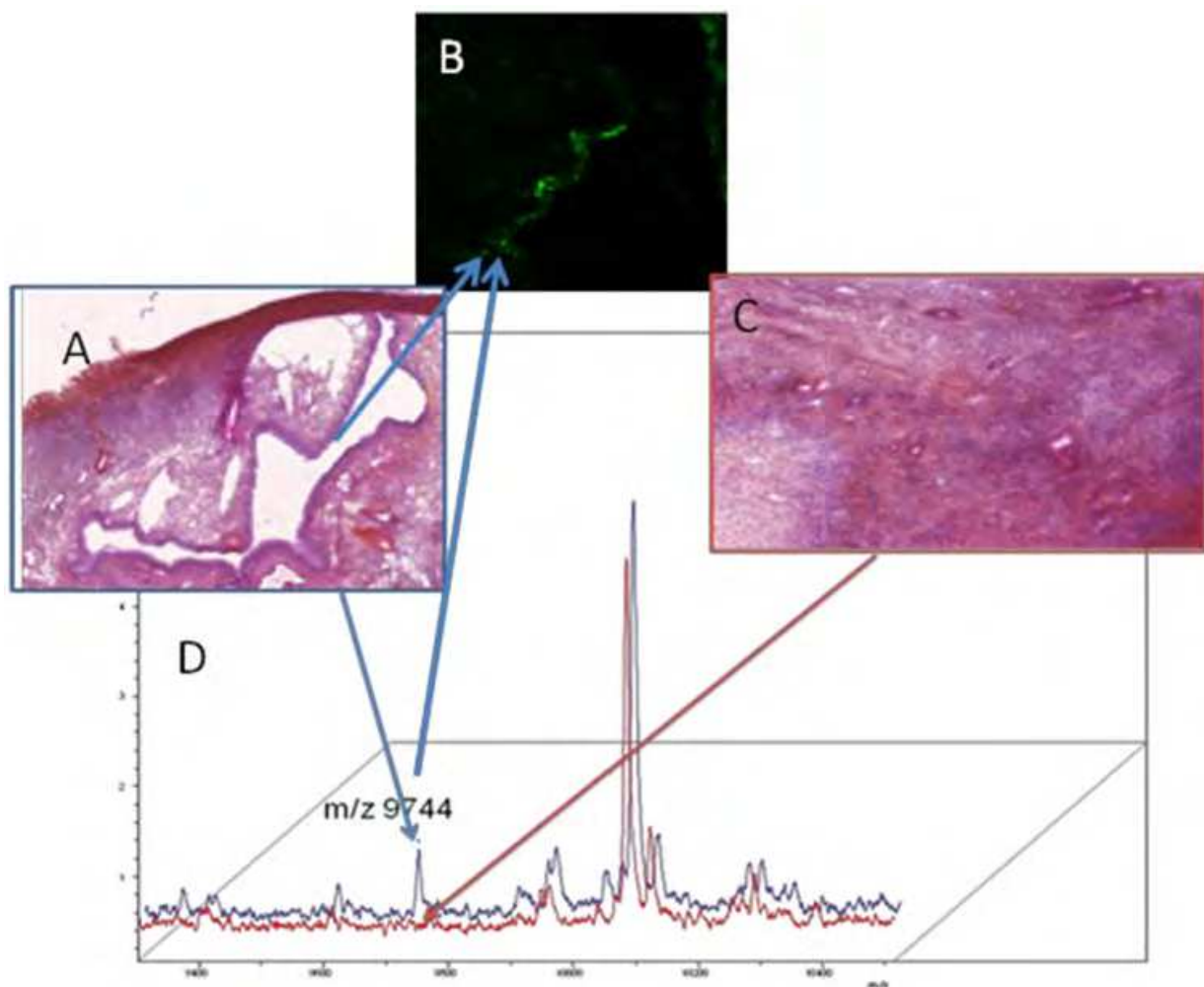


Fig. 4. C-terminal fragment of Reg alpha detection in stage Ia of ovarian cancer.

- Hematoxylin eosin staining of the carcinoma cell (acini)
- Hematoxylin eosin staining of the benign region
- Immunocytochemical studies with polyclonal antibody rose against the c-terminal part of Reg alpha
- MALDI mass spectra obtained from carcinoma cell and from the benign region. The data point out the detection of the m/z of 9744 in carcinoma region in line with the immunocytochemical data.

The PA28 activator belongs to the antigen processing machinery (APM). Its alteration by cleavage in ovarian carcinomas may be a mechanism to evade immune recognition. Such a hypothesis has already been proposed for the case of APM chaperones such as TAP, LMP2, LMP10, and tapasin in colon carcinoma, small cell lung carcinoma, and pancreatic carcinoma cell lines. In fact, IFN- γ treatment of these carcinoma cell lines corrects the TAP, LMP, and tapasin deficiencies and enhances PA28 α , LMP7, calnexin and calreticulin expression, which is accompanied by increased levels of MHC class 1 antigens⁷². Recently, PSEM2 (proteasome activator complex subunit 2, PA28 Beta) has also been detected in ascites fluid, implicating its immune cell tolerance toward carcinoma cells and confirms the dysregulation of self-antigen processing in ovarian tumors⁷³. Additionally, PA28 alpha seems to be a target for Epstein-Barr virus (EBV) and herpes virus (HV), as our proteomic and qPCR data indicates (Tables 3 and 4). Pudney and colleagues⁷⁴ have also shown that as EBV-infected cells move through the lytic cycle, their susceptibility to EBV-specific CD8+ T-cell recognition falls dramatically, concomitant with a reduction in transporter associated with antigen processing (TAP) function and surface human histocompatibility leukocyte antigen (HLA) class 1 expression. The implication of virus in the etiology of ovarian cancer is also sustained by the over-expression of furin enzyme (Figure 5), which is known to be implicated in glycoprotein B cleavage through a motif R-X-K/R-R in both EBV and HV^{75,76}.

Tumor Type	EBV (DNA copies/ng tumors)	HHV6 (DNA copies/ng tumors)
Carcinoma		
Serous adenocarcinoma	1.56	0.82
Mucous adenocarcinoma	0.37	0.10
Cytadenoma Carcinoma	0.28	1.16
Adenomacarcinoma highly infiltrated	1.14	0.37
Adenomacarcinoma clear cells	1.46	-
Benign		
Fibrous cytadenoma Benign	-	-
Fibrous cytadenoma Benign	-	-
Serous Cyst Benign	-	-
Yellow body hemorrhagic	-	-

Table 4. Viral DNA quantify by qPCR per ng of tissue.

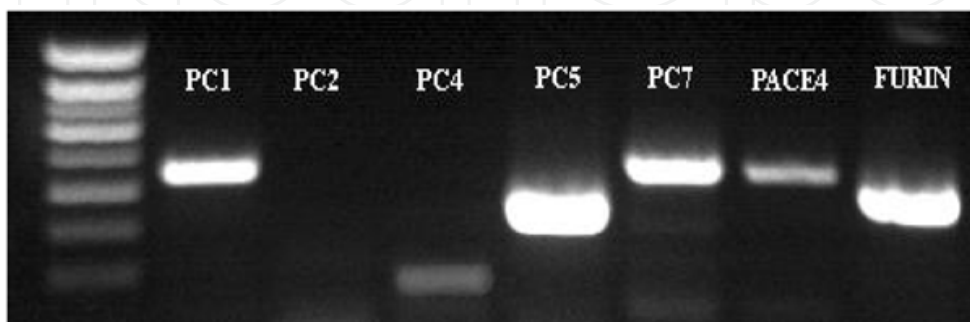


Fig. 5. RT-PCR amplification of prohormone convertase enzymes from serous stage III/IV carcinoma tissues.

Among the other four factors that might participate in the tolerance phenomenon by inhibiting immune activation, the acute phase protein, orosomucoid (ORM, also known as alpha1-acid glycoprotein or AGP), is normally increased in infection, inflammation, and cancer, and it seems to have immunosuppressive properties in ovarian carcinoma ascites through inhibition of IL-2 secretion by lymphocytes⁷⁷. Similarly, apolipoprotein A1 has been detected in conjunction with transthyretin and transferrin in early-stage mucinous tumors⁷⁸. ApoA-I is known to decrease expression of surface molecules such as CD1a, CD80, CD86, and HLA-DR in dendritic cells, and it stimulates the production of IL-10⁷⁹.

Interestingly, hemopexin has recently been demonstrated to reduce TNF α and IL-6 from macrophages during inflammation and limits TLR4 and TLR2 agonist-induced macrophage cytokine production⁸⁰. We demonstrate that in SKOV-3 epithelial ovarian carcinoma cells, all TLRs are over-expressed with the exception of TLR9 and TLR10 (**Figure 6**). This is in line with the over-expression of lumican, which is a small LRR proteoglycan in the extracellular matrix. Along with other proteoglycans, such as decorin, biglycan, and prolargin, lumican is known to be over-expressed in breast cancer and to play a role in tumor progression^{81,82}. However, as demonstrated for biglycan, which interacts with TLR2/4 on macrophages^{83,84}, we speculate that lumican is also involved in the activation of the inflammasome through TLR2/4 interaction. The activation of all danger-sensing receptors in carcinoma cells can be explained through the regulation of inflammation by carcinoma cells to facilitate tumor progression. In a sense, this implies that ovarian cancer cells act as “parasites” and use molecular mimicry⁸⁵ to escape the immune response, as they produce immunosuppressors to achieve tolerance (**Figure 7**).

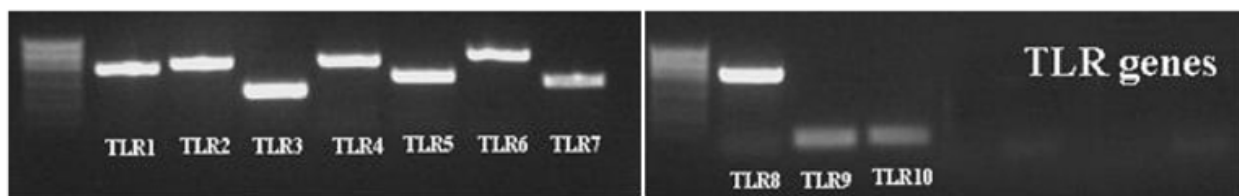


Fig. 6. RT-PCR amplification of Toll-like receptors from serous stage III/IV carcinoma tissues.

5. Proteins associated with cell proliferation

The S100 protein family has been previously detected in aggressive ovarian tumors³⁰. In our study, we detected S100 A11 and S100 A12 proteins. S100 A11 has been detected in ovarian ascites⁷³. S100 A11 (or calgizzarin) is known to regulate cell growth by inhibiting DNA synthesis^{86,87}. S100 A12 is known to contribute to leukocyte migration in chronic inflammatory responses⁸⁸. In conjunction with S100 proteins and cytoskeleton modifying proteins, we also detected expression of oviduct-specific glycoprotein (OGP, Mucin-9), a marker of normal oviductal epithelium. Our data are supportive of Woo and associates, who found that OGP is a tubal differentiation marker and may indicate early events in ovarian carcinogenesis. These data also support the hypothesis of oviduct ascini as the origin of serous ovarian carcinoma.

From immune components, stromal cell-derived factor-1 (SDF-1), the ligand of the CXCR4 receptor, is a CXC chemokine that induces proliferation in ovarian cancer cells by increasing the phosphorylation and activation of extracellular signal-regulated kinases (ERK)1/2, which in turn is correlated to epidermal growth factor (EGF) receptor transactivation.

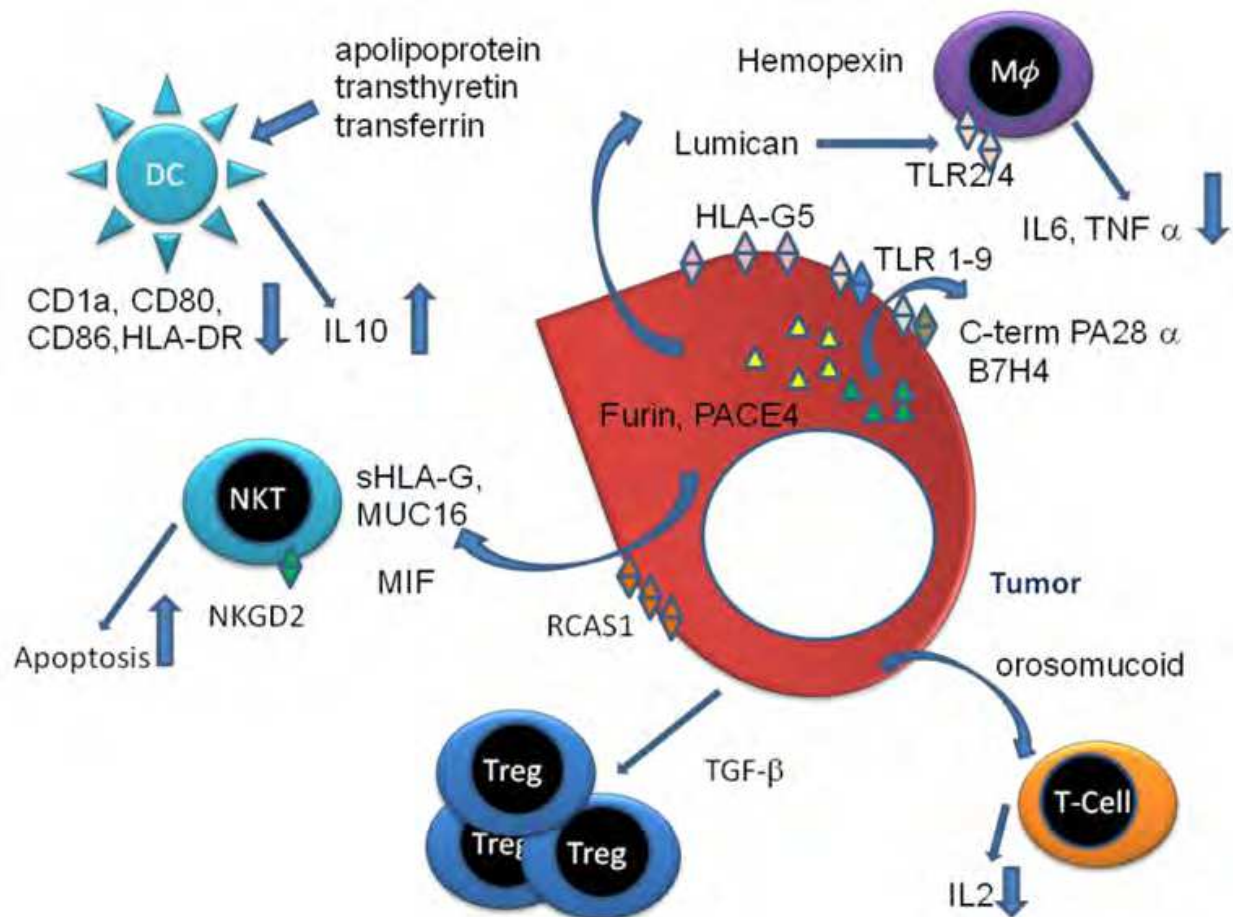


Fig. 7. Tumor cell factors production for escaping immune response.

Apolipoprotein A1 has been detected in conjunction with transthyretin and transferrin in early-stage mucinous tumors. Lumican, which is a small LRR proteoglycan in the extracellular matrix is known to be overexpressed in breast cancer and to play a role in tumor progression. ApoA-I is known to decrease expression of surface molecules such as CD1a, CD80, CD86, and HLA-DR in dendritic cells, and it stimulates the production of IL-10 hemopexin has recently been demonstrated to reduce TNF and IL-6 from macrophages during inflammation, and it limits TLR4 and TLR2 agonist-induced macrophage cytokine production. Orosomucoid have immunosuppressive properties in ovarian carcinoma ascites through inhibition of IL-2 secretion by lymphocytes. The tumor environment expresses molecules that can convert functional APCs into dysfunctional ones. These dysfunctional APCs in turn stimulate Treg differentiation and expansion. The tumor produces IL6, IL8, MUC18, MIF, RCAS1, sHLA-G exerting negative effects on the T-Cells. PA28 activator belongs to the antigen processing machinery (APM). Its alteration by cleavage by (furin, PACE4) in ovarian carcinomas participates in a mechanism to evade immune recognition.

Similarly, TGF-β produced by Treg cells stimulates tumor cell proliferation and increases matrix metalloproteinase's (MMP) production and enhances invasiveness of ovarian cancer cells⁸⁹⁻⁹³. In ovarian cancer, IL7 acts as a growth factor, like in breast cancer, and has been found in ascites and plasma^{39,94,95}. pDcs are also present in tumor environment and stimulate tumor growth by releasing TNF-α and IL8. The sum of these data reflect that cytokines exert pleiotropic effects in ovarian cancer and exert a major role in tumor proliferation.

6. Signaling to the cytoskeleton

Several candidate proteins, including profilin-1, cofilin-1, vimentin, and cytokeratin 19 are involved in the intracellular signaling to the cytoskeleton. Changes in cell phenotype, such as the conversion of epithelial cells to mesenchymal cells, are integral not only to embryonic development but also to cancer invasion and metastasis. Cells undergoing the epithelial-mesenchymal transition (EMT) lose their epithelial morphology, reorganize their cytoskeleton, and acquire a motile phenotype through the up- and down-regulation of several molecules, including tight and adherent junction proteins and mesenchymal markers. TGF- β has been described to induce EMT in ovarian adenocarcinoma cells⁹⁶. (Figure 8A)

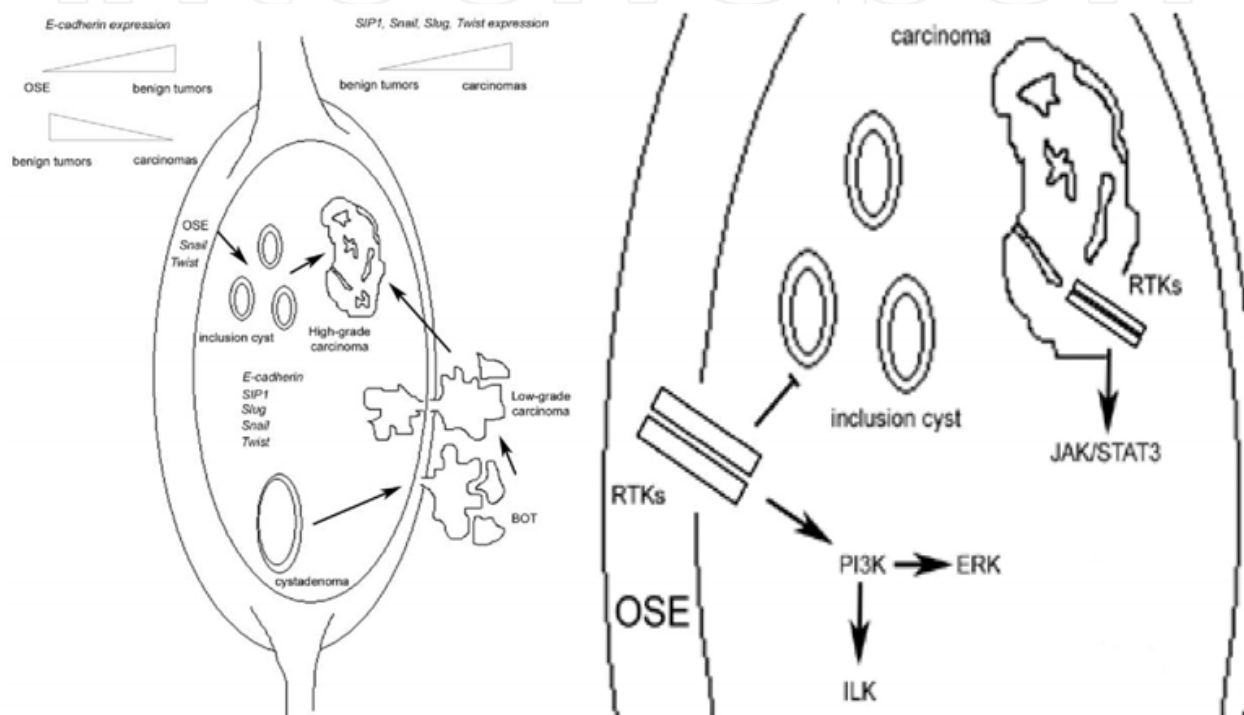


Figure 8.

A: Schematic illustration of E-cadherin, SIP1, Snail, Slug and Twist during ovarian progression. In this model, epithelial ovarian tumors have been classified into two broad categories: type I tumors including low-grade serous carcinomas, mucinous, endometrioid, and clear cells carcinomas seem to develop from their precursors, namely borderline ovarian tumors (BOTs), in a stepwise manner; type II including high-grade serous malignancies develop from the OSE or inclusion cysts without a common precursor. OSE cells covering the ovarian surface do not express E-cadherin but are positive for Snail and Twist expression. As depicted, E-cadherin expression changes during ovarian cancer progression showing an inverse correlation compared to SIP1, Snail, Slug and Twist expression⁹³.

B: A simplified overview of signalling network regulating EGF-induced EMT. In OSE cells, activation of the EGF receptor tyrosine kinases (RTKs) by EGF results in activation of the phosphatidylinositol 3-kinase (PI3K), which activates ILK and ERK pathways. EGF treated OSE cells display a molecular signature characteristic of EMT and are less likely to undergo a conversion in inclusion cysts. JAK/STAT3 pathway is required to induce EMT in ovarian cancer cells. Ovarian cancer cells that undergo EMT lose the expression of E-cadherin and NGAL and show an increased motility.

In the human lung adenocarcinoma cell line A549, this differentiation is accompanied by modification in the expression of several cytoskeleton proteins including β -actin, cofilin 1, moesin, filamin A and B, heat-shock protein beta-1, transgelin-2, S100 A11, and calpactin. These changes presumably increase migratory and invasive abilities⁹⁷. We recently demonstrated that treatment of the ovarian cancer cell line SKOV-3 with TGF- β (10 ng/mL, 24 h) increases the expression of cofilin and profilin-1 at mRNA and protein level, and modifies its cytoskeletal organization as assessed by confocal microscopy analysis⁹⁸. After binding to its receptor, TGF- β stimulates the reorganization of the actin cytoskeleton and triggers the formation of stress fibers and cellular protrusions⁹⁸ (**Figure 8B**).

7. Conclusion

A decade after its inception, MALDI-MSI has become a unique technique in the proteomic arsenal for biomarker hunting in a variety of diseases. In this report, we consider the contributions of MALDI-MSI and profiling technologies to clinical studies compared to the ones obtained by genomic and classical proteomic. A stringent analysis of the list of potential biomarkers detected by three technologies reflects little convergence between genomic and proteomic (classical and MALDI MSI) investigations by biomarker comparison. However, when integrating these biomarkers in biological process, a real convergence can be shown. What emerges is picture showing how tumors modulate and escape the immune response. In this context, several biomarkers can be detected. Similarly, immune tolerance forced by the tumor production and interaction with the immune cells also revealed, in ascites and in plasma, some specific immune related biomarkers. In the same way, genes and proteins associated with cell proliferation, cell migration, invasiveness and EMT can be detected. The sum of these data confirm that diagnostics and treatment efficacy can be followed by the modulation of these markers. One of the most exciting finding is based on data obtained with the C-terminal fragment of Reg-alpha, suggested that self modulation mechanism developed by the tumor cells starts very early in the pathogenic process. Antibodies directed against this specific marker can be used to track early stage tumor cells. MALDI-MSI can be used to detect these antibodies in tumors and validate the therapeutic strategy.

A decade after its inception, MALDI-MSI has become a unique technique in the proteomic arsenal for biomarker hunting. At this stage of development, it is important to ask whether we can consider this technique to be sufficiently developed for routine use in a clinical setting or an indispensable technology used in translational research. In this report, we have considered the contributions of MALDI-MSI and profiling technologies for clinical studies, outlining new directions that are required to align these technologies with the objectives of clinical proteomics.

8. Acknowledgements

Supported by grants from Agence Nationale de la Recherche (ANR PCV to IF), Institut du Cancer (INCA to IF), Institut de Recherche en Santé du Canada (ISRC to MS & RD), the Ministère du Développement Économique de l'Innovation et de l'Exportation (MDEIE to R.D), the Fond de la recherche en santé du Québec (FRSQ to R.D) and the Région Nord-Pas de Calais (to RL). R.D. is a member of the Centre de Recherche Clinique Etienne-Le Bel (Sherbrooke, Qc, Canada)

9. References

- [1] Franck, J.; Arafah, K.; Elayed, M.; Bonnel, D.; Vergara, D.; Jacquet, A.; Vinatier, D.; Wisztorski, M.; Day, R.; Fournier, I.; Salzet, M., MALDI imaging mass spectrometry: state of the art technology in clinical proteomics. *Mol Cell Proteomics* 2009, 8 (9), 2023-33.
- [2] Fournier, I.; Wisztorski, M.; Salzet, M., Tissue imaging using MALDI-MS: a new frontier of histopathology proteomics. *Expert Rev Proteomics* 2008, 5 (3), 413-24.
- [3] Amstalden van Hove, E. R.; Blackwell, T. R.; Klinkert, I.; Eijkel, G. B.; Heeren, R. M.; Glunde, K., Multimodal mass spectrometric imaging of small molecules reveals distinct spatio-molecular signatures in differentially metastatic breast tumor models. *Cancer Res* 70 (22), 9012-21.
- [4] Drake, R. R.; Cazares, L. H.; Jones, E. E.; Fuller, T. W.; Semmes, O. J.; Laronga, C., Challenges to Developing Proteomic-Based Breast Cancer Diagnostics. *OMICs*.
- [5] El Ayed, M.; Bonnel, D.; Longuespee, R.; Castelier, C.; Franck, J.; Vergara, D.; Desmons, A.; Tasiemski, A.; Kenani, A.; Vinatier, D.; Day, R.; Fournier, I.; Salzet, M., MALDI imaging mass spectrometry in ovarian cancer for tracking, identifying, and validating biomarkers. *Med Sci Monit* 2010, 16 (8), BR233-45.
- [6] Gustafsson, J. O.; Oehler, M. K.; Ruszkiewicz, A.; McColl, S. R.; Hoffmann, P., MALDI Imaging Mass Spectrometry (MALDI-IMS)-Application of Spatial Proteomics for Ovarian Cancer Classification and Diagnosis. *Int J Mol Sci* 12 (1), 773-94.
- [7] Lemaire, R.; Menguellet, S. A.; Stauber, J.; Marchaudon, V.; Lucot, J. P.; Collinet, P.; Farine, M. O.; Vinatier, D.; Day, R.; Ducoroy, P.; Salzet, M.; Fournier, I., Specific MALDI imaging and profiling for biomarker hunting and validation: fragment of the 11S proteasome activator complex, Reg alpha fragment, is a new potential ovary cancer biomarker. *J Proteome Res* 2007, 6 (11), 4127-34.
- [8] Schwamborn, K.; Caprioli, R. M., MALDI imaging mass spectrometry--painting molecular pictures. *Mol Oncol* 4 (6), 529-38.
- [9] Schwamborn, K.; Caprioli, R. M., Molecular imaging by mass spectrometry--looking beyond classical histology. *Nat Rev Cancer* 10 (9), 639-46.
- [10] Schwamborn, K.; Krieg, R. C.; Jirak, P.; Ott, G.; Knuchel, R.; Rosenwald, A.; Wellmann, A., Application of MALDI imaging for the diagnosis of classical Hodgkin lymphoma. *J Cancer Res Clin Oncol* 136 (11), 1651-5.
- [11] Schwamborn, K.; Krieg, R. C.; Uhlig, S.; Ikenberg, H.; Wellmann, A., MALDI imaging as a specific diagnostic tool for routine cervical cytology specimens. *Int J Mol Med* 27 (3), 417-21.
- [12] Caprioli, R. M.; Farmer, T. B.; Gile, J., Molecular imaging of biological samples: localization of peptides and proteins using MALDI-TOF MS. *Anal Chem* 1997, 69 (23), 4751-60.
- [13] McDonnell, L. A.; Heeren, R. M., Imaging mass spectrometry. *Mass Spectrom Rev* 2007, 26 (4), 606-43.
- [14] Wisztorski, M.; Lemaire, R.; Stauber, J.; Menguelet, S. A.; Croix, D.; Mathe, O. J.; Day, R.; Salzet, M.; Fournier, I., New developments in MALDI imaging for pathology proteomic studies. *Curr Pharm Des* 2007, 13 (32), 3317-24.
- [15] Lambaudie, E.; Collinet, P.; Vinatier, D., [Ovarian cancers and CA 125 in 2006]. *Gynecol Obstet Fertil* 2006, 34 (3), 254-7.

- [16] Edwards, B. K.; Brown, M. L.; Wingo, P. A.; Howe, H. L.; Ward, E.; Ries, L. A.; Schrag, D.; Jamison, P. M.; Jemal, A.; Wu, X. C.; Friedman, C.; Harlan, L.; Warren, J.; Anderson, R. N.; Pickle, L. W., Annual report to the nation on the status of cancer, 1975-2002, featuring population-based trends in cancer treatment. *J Natl Cancer Inst* 2005, 97 (19), 1407-27.
- [17] Ardekani, A. M.; Liotta, L. A.; Petricoin, E. F., 3rd, Clinical potential of proteomics in the diagnosis of ovarian cancer. *Expert Rev Mol Diagn* 2002, 2 (4), 312-20.
- [18] Bandera, C. A.; Tsui, H. W.; Mok, S. C.; Tsui, F. W., Expression of cytokines and receptors in normal, immortalized, and malignant ovarian epithelial cell lines. *Anticancer Res* 2003, 23 (4), 3151-7.
- [19] Conrads, T. P.; Fusaro, V. A.; Ross, S.; Johann, D.; Rajapakse, V.; Hitt, B. A.; Steinberg, S. M.; Kohn, E. C.; Fishman, D. A.; Whitely, G.; Barrett, J. C.; Liotta, L. A.; Petricoin, E. F., 3rd; Veenstra, T. D., High-resolution serum proteomic features for ovarian cancer detection. *Endocr Relat Cancer* 2004, 11 (2), 163-78.
- [20] Conrads, T. P.; Zhou, M.; Petricoin, E. F., 3rd; Liotta, L.; Veenstra, T. D., Cancer diagnosis using proteomic patterns. *Expert Rev Mol Diagn* 2003, 3 (4), 411-20.
- [21] Fields, M. M.; Chevlen, E., Ovarian cancer screening: a look at the evidence. *Clin J Oncol Nurs* 2006, 10 (1), 77-81.
- [22] Johann, D. J., Jr.; McGuigan, M. D.; Patel, A. R.; Tomov, S.; Ross, S.; Conrads, T. P.; Veenstra, T. D.; Fishman, D. A.; Whiteley, G. R.; Petricoin, E. F., 3rd; Liotta, L. A., Clinical proteomics and biomarker discovery. *Ann N Y Acad Sci* 2004, 1022, 295-305.
- [23] Kohn, E. C.; Mills, G. B.; Liotta, L., Promising directions for the diagnosis and management of gynecological cancers. *Int J Gynaecol Obstet* 2003, 83 Suppl 1, 203-9.
- [24] Rapkiewicz, A. V.; Espina, V.; Petricoin, E. F., 3rd; Liotta, L. A., Biomarkers of ovarian tumours. *Eur J Cancer* 2004, 40 (17), 2604-12.
- [25] Petricoin, E. F.; Ardekani, A. M.; Hitt, B. A.; Levine, P. J.; Fusaro, V. A.; Steinberg, S. M.; Mills, G. B.; Simone, C.; Fishman, D. A.; Kohn, E. C.; Liotta, L. A., Use of proteomic patterns in serum to identify ovarian cancer. *Lancet* 2002, 359 (9306), 572-7.
- [26] Bergen, H. R., 3rd; Vasmatazis, G.; Cliby, W. A.; Johnson, K. L.; Oberg, A. L.; Muddiman, D. C., Discovery of ovarian cancer biomarkers in serum using NanoLC electrospray ionization TOF and FT-ICR mass spectrometry. *Dis Markers* 2003, 19 (4-5), 239-49.
- [27] Diamandis, E. P., Proteomic patterns in serum and identification of ovarian cancer. *Lancet* 2002, 360 (9327), 170; author reply 170-1.
- [28] Engwegen, J. Y.; Gast, M. C.; Schellens, J. H.; Beijnen, J. H., Clinical proteomics: searching for better tumour markers with SELDI-TOF mass spectrometry. *Trends Pharmacol Sci* 2006, 27 (5), 251-9.
- [29] Fung, E. T.; Yip, T. T.; Lomas, L.; Wang, Z.; Yip, C.; Meng, X. Y.; Lin, S.; Zhang, F.; Zhang, Z.; Chan, D. W.; Weinberger, S. R., Classification of cancer types by measuring variants of host response proteins using SELDI serum assays. *Int J Cancer* 2005, 115 (5), 783-9.
- [30] Kikuchi, N.; Horiuchi, A.; Osada, R.; Imai, T.; Wang, C.; Chen, X.; Konishi, I., Nuclear expression of S100A4 is associated with aggressive behavior of epithelial ovarian carcinoma: an important autocrine/paracrine factor in tumor progression. *Cancer Sci* 2006, 97 (10), 1061-9.

- [31] Rai, A. J.; Zhang, Z.; Rosenzweig, J.; Shih Ie, M.; Pham, T.; Fung, E. T.; Sokoll, L. J.; Chan, D. W., Proteomic approaches to tumor marker discovery. *Arch Pathol Lab Med* 2002, 126 (12), 1518-26.
- [32] Xiao, Z.; Prieto, D.; Conrads, T. P.; Veenstra, T. D.; Issaq, H. J., Proteomic patterns: their potential for disease diagnosis. *Mol Cell Endocrinol* 2005, 230 (1-2), 95-106.
- [33] Zhu, Y.; Wu, R.; Sangha, N.; Yoo, C.; Cho, K. R.; Shedden, K. A.; Katabuchi, H.; Lubman, D. M., Classifications of ovarian cancer tissues by proteomic patterns. *Proteomics* 2006, 6 (21), 5846-56.
- [34] Bonnel, D., Longuespee, R, Frank, J, Roudbaraki, M, Gosset, P, Day, R, Salzet, M, Fournier I, Principal Component Analysis-Symbolic Discriminant Analyses (PCA-SDA) for Biomarkers Hunting and Validation Through on Tissue Bottom-up or In Source Decay in MALDI-MSI: Application to prostate cancer. *Anal Bioanal Chem* 2011, *In press*.
- [35] D'Anjou, F., Routhier, S., Perreault, J.P., Lati, A., Bonnel, D., Fournier, I., Salzet, M., Day, R., Molecular validation of PACE4 as a target in prostate cancer. *Translational Oncology* 2011.
- [36] Franck, J.; Longuespee, R.; Wisztorski, M.; Van Remoortere, A.; Van Zeijl, R.; Deelder, A.; Salzet, M.; McDonnell, L.; Fournier, I., MALDI mass spectrometry imaging of proteins exceeding 30,000 daltons. *Med Sci Monit* 16 (9), BR293-9.
- [37] Lemaire, R., Lucot, J.P., Collinet, P., Vinatier, D., Tabet, J.C., Salzet, M., Fournier, I., New developments in direct analyses by MALDI mass spectrometry for study ovarian cancer. *Mol Cell Proteomics* 2005, 4, S305-S308.
- [38] Stauber, J., Lemaire, R., Wisztorski, M., Ait-Menguellet, S., Lucot, J.P., Vinatier, D., Desmons, A., Deschamps, M., Proess, G., Rudolf, I., Salzet, M., Fournier, I., New developments in MALDI imaging mass spectrometry for pathological proteomic studies; Introduction to a novel concept, the specific MALDI imaging. *Mol Cell Proteomics* 2006, 5, S247-S249.
- [39] Giuntoli, R. L., 2nd; Webb, T. J.; Zoso, A.; Rogers, O.; Diaz-Montes, T. P.; Bristow, R. E.; Oelke, M., Ovarian cancer-associated ascites demonstrates altered immune environment: implications for antitumor immunity. *Anticancer Res* 2009, 29 (8), 2875-84.
- [40] Clarke, B.; Tinker, A. V.; Lee, C. H.; Subramanian, S.; van de Rijn, M.; Turbin, D.; Kalloger, S.; Han, G.; Ceballos, K.; Cadungog, M. G.; Huntsman, D. G.; Coukos, G.; Gilks, C. B., Intraepithelial T cells and prognosis in ovarian carcinoma: novel associations with stage, tumor type, and BRCA1 loss. *Mod Pathol* 2009, 22 (3), 393-402.
- [41] Curiel, T. J.; Coukos, G.; Zou, L.; Alvarez, X.; Cheng, P.; Mottram, P.; Evdemon-Hogan, M.; Conejo-Garcia, J. R.; Zhang, L.; Burow, M.; Zhu, Y.; Wei, S.; Kryczek, I.; Daniel, B.; Gordon, A.; Myers, L.; Lackner, A.; Disis, M. L.; Knutson, K. L.; Chen, L.; Zou, W., Specific recruitment of regulatory T cells in ovarian carcinoma fosters immune privilege and predicts reduced survival. *Nat Med* 2004, 10 (9), 942-9.
- [42] Preston, C. C.; Goode, E. L.; Hartmann, L. C.; Kalli, K. R.; Knutson, K. L., Immunity and immune suppression in human ovarian cancer. *Immunotherapy* 3 (4), 539-56.
- [43] Yigit, R.; Massuger, L. F.; Figdor, C. G.; Torensma, R., Ovarian cancer creates a suppressive microenvironment to escape immune elimination. *Gynecol Oncol* 117 (2), 366-72.

- [44] Nonaka, H.; Saga, Y.; Fujiwara, H.; Akimoto, H.; Yamada, A.; Kagawa, S.; Takei, Y.; Machida, S.; Takikawa, O.; Suzuki, M., Indoleamine 2,3-dioxygenase promotes peritoneal dissemination of ovarian cancer through inhibition of natural killer cell function and angiogenesis promotion. *Int J Oncol* 38 (1), 113-20.
- [45] Ino, K., Indoleamine 2,3-dioxygenase and immune tolerance in ovarian cancer. *Curr Opin Obstet Gynecol* 23 (1), 13-8.
- [46] Inaba, T.; Ino, K.; Kajiyama, H.; Yamamoto, E.; Shibata, K.; Nawa, A.; Nagasaka, T.; Akimoto, H.; Takikawa, O.; Kikkawa, F., Role of the immunosuppressive enzyme indoleamine 2,3-dioxygenase in the progression of ovarian carcinoma. *Gynecol Oncol* 2009, 115 (2), 185-92.
- [47] Okamoto, A.; Nikaido, T.; Ochiai, K.; Takakura, S.; Saito, M.; Aoki, Y.; Ishii, N.; Yanaihara, N.; Yamada, K.; Takikawa, O.; Kawaguchi, R.; Isonishi, S.; Tanaka, T.; Urashima, M., Indoleamine 2,3-dioxygenase serves as a marker of poor prognosis in gene expression profiles of serous ovarian cancer cells. *Clin Cancer Res* 2005, 11 (16), 6030-9.
- [48] Nelson, B. H., IDO and outcomes in ovarian cancer. *Gynecol Oncol* 2009, 115 (2), 179-80.
- [49] Loercher, A. E.; Nash, M. A.; Kavanagh, J. J.; Platsoucas, C. D.; Freedman, R. S., Identification of an IL-10-producing HLA-DR-negative monocyte subset in the malignant ascites of patients with ovarian carcinoma that inhibits cytokine protein expression and proliferation of autologous T cells. *J Immunol* 1999, 163 (11), 6251-60.
- [50] Wei, S.; Kryczek, I.; Zou, L.; Daniel, B.; Cheng, P.; Mottram, P.; Curiel, T.; Lange, A.; Zou, W., Plasmacytoid dendritic cells induce CD8⁺ regulatory T cells in human ovarian carcinoma. *Cancer Res* 2005, 65 (12), 5020-6.
- [51] Jung, Y. W.; Kim, Y. T.; Kim, S. W.; Kim, S.; Kim, J. H.; Cho, N. H.; Kim, J. W., Correlation of human leukocyte antigen-G (HLA-G) expression and disease progression in epithelial ovarian cancer. *Reprod Sci* 2009, 16 (11), 1103-11.
- [52] Menier, C.; Prevot, S.; Carosella, E. D.; Rouas-Freiss, N., Human leukocyte antigen-G is expressed in advanced-stage ovarian carcinoma of high-grade histology. *Hum Immunol* 2009, 70 (12), 1006-9.
- [53] Sheu, J. J.; Shih Ie, M., Clinical and biological significance of HLA-G expression in ovarian cancer. *Semin Cancer Biol* 2007, 17 (6), 436-43.
- [54] Rebmann, V.; Regel, J.; Stolke, D.; Grosse-Wilde, H., Secretion of sHLA-G molecules in malignancies. *Semin Cancer Biol* 2003, 13 (5), 371-7.
- [55] Singer, G.; Rebmann, V.; Chen, Y. C.; Liu, H. T.; Ali, S. Z.; Reinsberg, J.; McMaster, M. T.; Pfeiffer, K.; Chan, D. W.; Wardelmann, E.; Grosse-Wilde, H.; Cheng, C. C.; Kurman, R. J.; Shih Ie, M., HLA-G is a potential tumor marker in malignant ascites. *Clin Cancer Res* 2003, 9 (12), 4460-4.
- [56] Mach, P.; Blecharz, P.; Basta, P.; Marianowski, P.; Skret-Magierlo, J.; Kojs, Z.; Grabiec, M.; Wicherek, L., Differences in the soluble HLA-G blood serum concentration levels in patients with ovarian cancer and ovarian and deep endometriosis. *Am J Reprod Immunol* 63 (5), 387-95.
- [57] Lin, A.; Yan, W. H.; Xu, H. H.; Gan, M. F.; Cai, J. F.; Zhu, M.; Zhou, M. Y., HLA-G expression in human ovarian carcinoma counteracts NK cell function. *Ann Oncol* 2007, 18 (11), 1804-9.
- [58] Simon, I.; Katsaros, D.; Rigault de la Longrais, I.; Massobrio, M.; Scorilas, A.; Kim, N. W.; Sarno, M. J.; Wolfert, R. L.; Diamandis, E. P., B7-H4 is over-expressed in early-

- stage ovarian cancer and is independent of CA125 expression. *Gynecol Oncol* 2007, 106 (2), 334-41.
- [59] Simon, I.; Liu, Y.; Krall, K. L.; Urban, N.; Wolfert, R. L.; Kim, N. W.; McIntosh, M. W., Evaluation of the novel serum markers B7-H4, Spondin 2, and DcR3 for diagnosis and early detection of ovarian cancer. *Gynecol Oncol* 2007, 106 (1), 112-8.
- [60] Simon, I.; Zhuo, S.; Corral, L.; Diamandis, E. P.; Sarno, M. J.; Wolfert, R. L.; Kim, N. W., B7-h4 is a novel membrane-bound protein and a candidate serum and tissue biomarker for ovarian cancer. *Cancer Res* 2006, 66 (3), 1570-5.
- [61] Gubbels, J. A.; Felder, M.; Horibata, S.; Belisle, J. A.; Kapur, A.; Holden, H.; Petrie, S.; Migneault, M.; Rancourt, C.; Connor, J. P.; Patankar, M. S., MUC16 provides immune protection by inhibiting synapse formation between NK and ovarian tumor cells. *Mol Cancer* 9, 11.
- [62] Krockenberger, M.; Dombrowski, Y.; Weidler, C.; Ossadnik, M.; Honig, A.; Hausler, S.; Voigt, H.; Becker, J. C.; Leng, L.; Steinle, A.; Weller, M.; Bucala, R.; Dietl, J.; Wischhusen, J., Macrophage migration inhibitory factor contributes to the immune escape of ovarian cancer by down-regulating NKG2D. *J Immunol* 2008, 180 (11), 7338-48.
- [63] Agarwal, R.; Whang, D. H.; Alvero, A. B.; Visintin, I.; Lai, Y.; Segal, E. A.; Schwartz, P.; Ward, D.; Rutherford, T.; Mor, G., Macrophage migration inhibitory factor expression in ovarian cancer. *Am J Obstet Gynecol* 2007, 196 (4), 348 e1-5.
- [64] Sonoda, K.; Miyamoto, S.; Yotsumoto, F.; Yagi, H.; Nakashima, M.; Watanabe, T.; Nakano, H., Clinical significance of RCAS1 as a biomarker of ovarian cancer. *Oncol Rep* 2007, 17 (3), 623-8.
- [65] McGilvray, R. W.; Eagle, R. A.; Rolland, P.; Jafferji, I.; Trowsdale, J.; Durrant, L. G., ULBP2 and RAET1E NKG2D ligands are independent predictors of poor prognosis in ovarian cancer patients. *Int J Cancer* 127 (6), 1412-20.
- [66] Yang, Y.; Fruh, K.; Ahn, K.; Peterson, P. A., In vivo assembly of the proteasomal complexes, implications for antigen processing. *J Biol Chem* 1995, 270 (46), 27687-94.
- [67] Kloetzel, P. M., The proteasome system: a neglected tool for improvement of novel therapeutic strategies? *Gene Ther* 1998, 5 (10), 1297-8.
- [68] Rivett, A. J.; Gardner, R. C., Proteasome inhibitors: from in vitro uses to clinical trials. *J Pept Sci* 2000, 6 (9), 478-88.
- [69] Rotem-Yehudar, R.; Groettrup, M.; Soza, A.; Kloetzel, P. M.; Ehrlich, R., LMP-associated proteolytic activities and TAP-dependent peptide transport for class 1 MHC molecules are suppressed in cell lines transformed by the highly oncogenic adenovirus 12. *J Exp Med* 1996, 183 (2), 499-514.
- [70] Kuckelkorn, U.; Ruppert, T.; Strehl, B.; Jungblut, P. R.; Zimny-Arndt, U.; Lamer, S.; Prinz, I.; Drung, I.; Kloetzel, P. M.; Kaufmann, S. H.; Steinhoff, U., Link between organ-specific antigen processing by 20S proteasomes and CD8(+) T cell-mediated autoimmunity. *J Exp Med* 2002, 195 (8), 983-90.
- [71] Regad, T.; Saib, A.; Lallemand-Breitenbach, V.; Pandolfi, P. P.; de The, H.; Chelbi-Alix, M. K., PML mediates the interferon-induced antiviral state against a complex retrovirus via its association with the viral transactivator. *EMBO J* 2001, 20 (13), 3495-505.

- [72] Delp, K.; Momburg, F.; Hilmes, C.; Huber, C.; Seliger, B., Functional deficiencies of components of the MHC class I antigen pathway in human tumors of epithelial origin. *Bone Marrow Transplant* 2000, 25 Suppl 2, S88-95.
- [73] Gortzak-Uzan, L.; Ignatchenko, A.; Evangelou, A. I.; Agochiya, M.; Brown, K. A.; St Onge, P.; Kireeva, I.; Schmitt-Ulms, G.; Brown, T. J.; Murphy, J.; Rosen, B.; Shaw, P.; Jurisica, I.; Kislinger, T., A proteome resource of ovarian cancer ascites: integrated proteomic and bioinformatic analyses to identify putative biomarkers. *J Proteome Res* 2008, 7 (1), 339-51.
- [74] Pudney, V. A.; Leese, A. M.; Rickinson, A. B.; Hislop, A. D., CD8+ immunodominance among Epstein-Barr virus lytic cycle antigens directly reflects the efficiency of antigen presentation in lytically infected cells. *J Exp Med* 2005, 201 (3), 349-60.
- [75] Sorem, J.; Jardetzky, T. S.; Longnecker, R., Cleavage and secretion of Epstein-Barr virus glycoprotein 42 promote membrane fusion with B lymphocytes. *J Virol* 2009, 83 (13), 6664-72.
- [76] Sorem, J.; Longnecker, R., Cleavage of Epstein-Barr virus glycoprotein B is required for full function in cell-cell fusion with both epithelial and B cells. *J Gen Virol* 2009, 90 (Pt 3), 591-5.
- [77] Elg, S. A.; Mayer, A. R.; Carson, L. F.; Twiggs, L. B.; Hill, R. B.; Ramakrishnan, S., Alpha-1 acid glycoprotein is an immunosuppressive factor found in ascites from ovaria carcinoma. *Cancer* 1997, 80 (8), 1448-56.
- [78] Nosov, V.; Su, F.; Amneus, M.; Birrer, M.; Robins, T.; Kotlerman, J.; Reddy, S.; Farias-Eisner, R., Validation of serum biomarkers for detection of early-stage ovarian cancer. *Am J Obstet Gynecol* 2009, 200 (6), 639 e1-5.
- [79] Kim, K. D.; Lim, H. Y.; Lee, H. G.; Yoon, D. Y.; Choe, Y. K.; Choi, I.; Paik, S. G.; Kim, Y. S.; Yang, Y.; Lim, J. S., Apolipoprotein A-I induces IL-10 and PGE2 production in human monocytes and inhibits dendritic cell differentiation and maturation. *Biochem Biophys Res Commun* 2005, 338 (2), 1126-36.
- [80] Liang, X.; Lin, T.; Sun, G.; Beasley-Topliffe, L.; Cavaillon, J. M.; Warren, H. S., Hemopexin down-regulates LPS-induced proinflammatory cytokines from macrophages. *J Leukoc Biol* 2009, 86 (2), 229-35.
- [81] Leygue, E.; Snell, L.; Dotzlaw, H.; Hole, K.; Hiller-Hitchcock, T.; Roughley, P. J.; Watson, P. H.; Murphy, L. C., Expression of lumican in human breast carcinoma. *Cancer Res* 1998, 58 (7), 1348-52.
- [82] Leygue, E.; Snell, L.; Dotzlaw, H.; Troup, S.; Hiller-Hitchcock, T.; Murphy, L. C.; Roughley, P. J.; Watson, P. H., Lumican and decorin are differentially expressed in human breast carcinoma. *J Pathol* 2000, 192 (3), 313-20.
- [83] Babelova, A.; Moreth, K.; Tsalastra-Greul, W.; Zeng-Brouwers, J.; Eickelberg, O.; Young, M. F.; Bruckner, P.; Pfeilschifter, J.; Schaefer, R. M.; Groene, H. J.; Schaefer, L., Biglycan: A danger signal that activates the NLRP3 inflammasome via toll-like and P2X receptors. *J Biol Chem* 2009.
- [84] Schaefer, L.; Babelova, A.; Kiss, E.; Hausser, H. J.; Baliova, M.; Krzyzankova, M.; Marsche, G.; Young, M. F.; Mihalik, D.; Gotte, M.; Malle, E.; Schaefer, R. M.; Grone, H. J., The matrix component biglycan is proinflammatory and signals through Toll-like receptors 4 and 2 in macrophages. *J Clin Invest* 2005, 115 (8), 2223-33.
- [85] Salzet, M.; Capron, A.; Stefano, G. B., Molecular crosstalk in host-parasite relationships: schistosome- and leech-host interactions. *Parasitol Today* 2000, 16 (12), 536-40.

- [86] Makino, E.; Sakaguchi, M.; Iwatsuki, K.; Huh, N. H., Introduction of an N-terminal peptide of S100C/A11 into human cells induces apoptotic cell death. *J Mol Med* 2004, 82 (9), 612-20.
- [87] Sakaguchi, M.; Miyazaki, M.; Sonegawa, H.; Kashiwagi, M.; Ohba, M.; Kuroki, T.; Namba, M.; Huh, N. H., PKC α mediates TGF β -induced growth inhibition of human keratinocytes via phosphorylation of S100C/A11. *J Cell Biol* 2004, 164 (7), 979-84.
- [88] Yang, Z.; Tao, T.; Raftery, M. J.; Youssef, P.; Di Girolamo, N.; Geczy, C. L., Proinflammatory properties of the human S100 protein S100A12. *J Leukoc Biol* 2001, 69 (6), 986-94.
- [89] Do, T. V.; Kubba, L. A.; Du, H.; Sturgis, C. D.; Woodruff, T. K., Transforming growth factor- β 1, transforming growth factor- β 2, and transforming growth factor- β 3 enhance ovarian cancer metastatic potential by inducing a Smad3-dependent epithelial-to-mesenchymal transition. *Mol Cancer Res* 2008, 6 (5), 695-705.
- [90] Rodriguez, G. C.; Haisley, C.; Hurteau, J.; Moser, T. L.; Whitaker, R.; Bast, R. C., Jr.; Stack, M. S., Regulation of invasion of epithelial ovarian cancer by transforming growth factor- β . *Gynecol Oncol* 2001, 80 (2), 245-53.
- [91] Sood, A. K.; Fletcher, M. S.; Coffin, J. E.; Yang, M.; Seftor, E. A.; Gruman, L. M.; Gershenson, D. M.; Hendrix, M. J., Functional role of matrix metalloproteinases in ovarian tumor cell plasticity. *Am J Obstet Gynecol* 2004, 190 (4), 899-909.
- [92] Sood, A. K.; Seftor, E. A.; Fletcher, M. S.; Gardner, L. M.; Heidger, P. M.; Buller, R. E.; Seftor, R. E.; Hendrix, M. J., Molecular determinants of ovarian cancer plasticity. *Am J Pathol* 2001, 158 (4), 1279-88.
- [93] Vergara, D.; Merlot, B.; Lucot, J. P.; Collinet, P.; Vinatier, D.; Fournier, I.; Salzet, M., Epithelial-mesenchymal transition in ovarian cancer. *Cancer Lett* 2009.
- [94] Xie, X.; Ye, D.; Chen, H.; Lu, W.; Cheng, B.; Zhong, H., Interleukin-7 and suppression of local peritoneal immunity in ovarian carcinoma. *Int J Gynaecol Obstet* 2004, 85 (2), 151-8.
- [95] Lambeck, A. J.; Crijns, A. P.; Leffers, N.; Sluiter, W. J.; ten Hoor, K. A.; Braid, M.; van der Zee, A. G.; Daemen, T.; Nijman, H. W.; Kast, W. M., Serum cytokine profiling as a diagnostic and prognostic tool in ovarian cancer: a potential role for interleukin 7. *Clin Cancer Res* 2007, 13 (8), 2385-91.
- [96] Kitagawa, K.; Murata, A.; Matsuura, N.; Tohya, K.; Takaichi, S.; Monden, M.; Inoue, M., Epithelial-mesenchymal transformation of a newly established cell line from ovarian adenocarcinoma by transforming growth factor- β 1. *Int J Cancer* 1996, 66 (1), 91-7.
- [97] Keshamouni, V. G.; Michailidis, G.; Grasso, C. S.; Anthwal, S.; Strahler, J. R.; Walker, A.; Arenberg, D. A.; Reddy, R. C.; Akulapalli, S.; Thannickal, V. J.; Standiford, T. J.; Andrews, P. C.; Omenn, G. S., Differential protein expression profiling by iTRAQ-2DLC-MS/MS of lung cancer cells undergoing epithelial-mesenchymal transition reveals a migratory/invasive phenotype. *J Proteome Res* 2006, 5 (5), 1143-54.
- [98] Vergara, D.; Merlot, B.; Lucot, J. P.; Collinet, P.; Vinatier, D.; Fournier, I.; Salzet, M., Epithelial-mesenchymal transition in ovarian cancer. *Cancer Lett* 291 (1), 59-66.
- [99] Tinelli, A.; Vergara, D.; Martignago, R.; Leo, G.; Malvasi, A.; Tinelli, R.; Marsigliante, S.; Maffia, M.; Lorusso, V., Ovarian cancer biomarkers: a focus on genomic and proteomic findings. *Curr Genomics* 2007, 8 (5), 335-42.

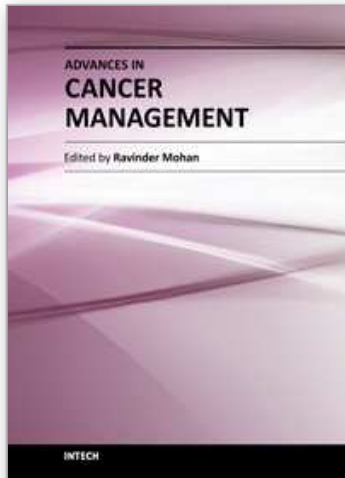
- [100] Diefenbach, C. S.; Soslow, R. A.; Iasonos, A.; Linkov, I.; Hedvat, C.; Bonham, L.; Singer, J.; Barakat, R. R.; Aghajanian, C.; Dupont, J., Lysophosphatidic acid acyltransferase-beta (LPAAT-beta) is highly expressed in advanced ovarian cancer and is associated with aggressive histology and poor survival. *Cancer* 2006, 107 (7), 1511-9.
- [101] Kim, H.; Watkinson, J.; Varadan, V.; Anastassiou, D., Multi-cancer computational analysis reveals invasion-associated variant of desmoplastic reaction involving INHBA, THBS2 and COL11A1. *BMC Med Genomics* 3, 51.
- [102] Oikonomopoulou, K.; Batruch, I.; Smith, C. R.; Soosaipillai, A.; Diamandis, E. P.; Hollenberg, M. D., Functional proteomics of kallikrein-related peptidases in ovarian cancer ascites fluid. *Biol Chem* 391 (4), 381-90.
- [103] Ahmed, A. S.; Dew, T.; Lawton, F. G.; Papadopoulos, A. J.; Devaja, O.; Raju, K. S.; Sherwood, R. A., Tumour M2-PK as a predictor of surgical outcome in ovarian cancer, a prospective cohort study. *Eur J Gynaecol Oncol* 2007, 28 (2), 103-8.
- [104] Ayhan, A.; Ertunc, D.; Tok, E. C., Expression of the c-Met in advanced epithelial ovarian cancer and its prognostic significance. *Int J Gynecol Cancer* 2005, 15 (4), 618-23.
- [105] Tang, M. K.; Zhou, H. Y.; Yam, J. W.; Wong, A. S., c-Met overexpression contributes to the acquired apoptotic resistance of nonadherent ovarian cancer cells through a cross talk mediated by phosphatidylinositol 3-kinase and extracellular signal-regulated kinase 1/2. *Neoplasia* 12 (2), 128-38.
- [106] Zhou, H. Y.; Pon, Y. L.; Wong, A. S., HGF/MET signaling in ovarian cancer. *Curr Mol Med* 2008, 8 (6), 469-80.
- [107] Coffelt, S. B.; Marini, F. C.; Watson, K.; Zvezdaryk, K. J.; Dembinski, J. L.; LaMarca, H. L.; Tomchuck, S. L.; Honer zu Bentrup, K.; Danka, E. S.; Henkle, S. L.; Scandurro, A. B., The pro-inflammatory peptide LL-37 promotes ovarian tumor progression through recruitment of multipotent mesenchymal stromal cells. *Proc Natl Acad Sci U S A* 2009, 106 (10), 3806-11.
- [108] Kenny, H. A.; Lengyel, E., MMP-2 functions as an early response protein in ovarian cancer metastasis. *Cell Cycle* 2009, 8 (5), 683-8.
- [109] Zohny, S. F.; Fayed, S. T., Clinical utility of circulating matrix metalloproteinase-7 (MMP-7), CC chemokine ligand 18 (CCL18) and CC chemokine ligand 11 (CCL11) as markers for diagnosis of epithelial ovarian cancer. *Med Oncol* 27 (4), 1246-53.
- [110] Landen, C. N.; Kinch, M. S.; Sood, A. K., EphA2 as a target for ovarian cancer therapy. *Expert Opin Ther Targets* 2005, 9 (6), 1179-87.
- [111] Lu, C.; Shahzad, M. M.; Wang, H.; Landen, C. N.; Kim, S. W.; Allen, J.; Nick, A. M.; Jennings, N.; Kinch, M. S.; Bar-Eli, M.; Sood, A. K., EphA2 overexpression promotes ovarian cancer growth. *Cancer Biol Ther* 2008, 7 (7), 1098-103.
- [112] Thaker, P. H.; Deavers, M.; Celestino, J.; Thornton, A.; Fletcher, M. S.; Landen, C. N.; Kinch, M. S.; Kiener, P. A.; Sood, A. K., EphA2 expression is associated with aggressive features in ovarian carcinoma. *Clin Cancer Res* 2004, 10 (15), 5145-50.
- [113] Kobel, M.; Kalloger, S. E.; Boyd, N.; McKinney, S.; Mehl, E.; Palmer, C.; Leung, S.; Bowen, N. J.; Ionescu, D. N.; Rajput, A.; Prentice, L. M.; Miller, D.; Santos, J.; Swenerton, K.; Gilks, C. B.; Huntsman, D., Ovarian carcinoma subtypes are different diseases: implications for biomarker studies. *PLoS Med* 2008, 5 (12), e232.

- [114] Ripley, D.; Shoup, B.; Majewski, A.; Chegini, N., Differential expression of interleukins IL-13 and IL-15 in normal ovarian tissue and ovarian carcinomas. *Gynecol Oncol* 2004, 92 (3), 761-8.
- [115] Lim, R.; Ahmed, N.; Borregaard, N.; Riley, C.; Wafai, R.; Thompson, E. W.; Quinn, M. A.; Rice, G. E., Neutrophil gelatinase-associated lipocalin (NGAL) an early-screening biomarker for ovarian cancer: NGAL is associated with epidermal growth factor-induced epithelio-mesenchymal transition. *Int J Cancer* 2007, 120 (11), 2426-34.
- [116] Bjorge, L.; Hakulinen, J.; Vintermyr, O. K.; Jarva, H.; Jensen, T. S.; Iversen, O. E.; Meri, S., Ascitic complement system in ovarian cancer. *Br J Cancer* 2005, 92 (5), 895-905.
- [117] Fischer, D. C.; Noack, K.; Runnebaum, I. B.; Watermann, D. O.; Kieback, D. G.; Stamm, S.; Stickeler, E., Expression of splicing factors in human ovarian cancer. *Oncol Rep* 2004, 11 (5), 1085-90.
- [118] Surowiak, P.; Materna, V.; Maciejczyk, A.; Kaplenko, I.; Spaczynski, M.; Dietel, M.; Lage, H.; Zabel, M., CD46 expression is indicative of shorter revival-free survival for ovarian cancer patients. *Anticancer Res* 2006, 26 (6C), 4943-8.
- [119] Rousseau, J.; Tetu, B.; Caron, D.; Malenfant, P.; Cattaruzzi, P.; Audette, M.; Doillon, C.; Tremblay, J. P.; Guerette, B., RCAS1 is associated with ductal breast cancer progression. *Biochem Biophys Res Commun* 2002, 293 (5), 1544-9.
- [120] Tilli, T. M.; Franco, V. F.; Robbs, B. K.; Wanderley, J. L.; de Azevedo da Silva, F. R.; de Mello, K. D.; Viola, J. P.; Weber, G. F.; Gimba, E. R., Osteopontin-c Splicing Isoform Contributes to Ovarian Cancer Progression. *Mol Cancer Res*.
- [121] Yan, X. D.; Pan, L. Y., [Proteomic analysis of human ovarian cancer cell lines and their platinum-resistant clones]. *Zhonghua Fu Chan Ke Za Zhi* 2006, 41 (9), 584-7.
- [122] Yan, X. D.; Pan, L. Y.; Yuan, Y.; Lang, J. H.; Mao, N., Identification of platinum-resistance associated proteins through proteomic analysis of human ovarian cancer cells and their platinum-resistant sublines. *J Proteome Res* 2007, 6 (2), 772-80.
- [123] Nishimura, S.; Tsuda, H.; Kataoka, F.; Arao, T.; Nomura, H.; Chiyoda, T.; Susumu, N.; Nishio, K.; Aoki, D., Overexpression of cofilin 1 can predict progression-free survival in patients with epithelial ovarian cancer receiving standard therapy. *Hum Pathol*.
- [124] Jones, M. B.; Krutzsch, H.; Shu, H.; Zhao, Y.; Liotta, L. A.; Kohn, E. C.; Petricoin, E. F., 3rd, Proteomic analysis and identification of new biomarkers and therapeutic targets for invasive ovarian cancer. *Proteomics* 2002, 2 (1), 76-84.
- [125] Alper, T.; Kahraman, H.; Cetinkaya, M. B.; Yanik, F.; Akcay, G.; Bedir, A.; Malatyalioglu, E.; Kokcu, A., Serum leptin and body composition in polycystic ovarian syndrome. *Ann Saudi Med* 2004, 24 (1), 9-12.
- [126] Erturk, E.; Tuncel, E., Polycystic ovarian disease and serum leptin levels? *Fertil Steril* 2003, 80 (4), 1068-9; author reply 1069-70.
- [127] Qian, B.; Katsaros, D.; Lu, L.; Canuto, E. M.; Benedetto, C.; Beeghly-Fadiel, A.; Yu, H., IGF-II promoter specific methylation and expression in epithelial ovarian cancer and their associations with disease characteristics. *Oncol Rep* 25 (1), 203-13.
- [128] Park, E. K.; Johnson, A. R.; Yates, D. H.; Thomas, P. S., Evaluation of ovarian cancer biomarkers in subjects with benign asbestos-related pleural diseases. *Clin Chem Lab Med* 49 (1), 147-50.

- [129] Bengtsson, S.; Krogh, M.; Szigarto, C. A.; Uhlen, M.; Schedvins, K.; Silfversward, C.; Linder, S.; Auer, G.; Alaiya, A.; James, P., Large-scale proteomics analysis of human ovarian cancer for biomarkers. *J Proteome Res* 2007, 6 (4), 1440-50.

IntechOpen

IntechOpen



Advances in Cancer Management

Edited by Prof. Ravinder Mohan

ISBN 978-953-307-870-0

Hard cover, 278 pages

Publisher InTech

Published online 27, January, 2012

Published in print edition January, 2012

Cancer is now the most common cause of death in the world. However, because of early diagnosis, better treatment, and advanced life expectancy, many cancer patients frequently live a long, happy, and healthy life after the diagnosis- and often live as long as patients who eventually do not die because of cancer. This book presents newer advances in diagnosis and treatment of specific cancers, an evidence-based and realistic approach to the selection of cancer treatment, and cutting-edge laboratory developments such as the use of the MALDI technique and computational methods that can be used to detect newer protein biomarkers of cancers in diagnosis and to evaluate the success of treatment.

How to reference

In order to correctly reference this scholarly work, feel free to copy and paste the following:

Rémi Longuespee, Charlotte Boyon, Olivier Kerdraon, Denis Vinatier, Isabelle Fournier, Robert Day and Michel Salzet (2012). MALDI-MSI and Ovarian Cancer Biomarkers, *Advances in Cancer Management*, Prof. Ravinder Mohan (Ed.), ISBN: 978-953-307-870-0, InTech, Available from:
<http://www.intechopen.com/books/advances-in-cancer-management/maldi-imaging-mass-spectrometry-in-cancer>

INTECH
open science | open minds

InTech Europe

University Campus STeP Ri
Slavka Krautzeka 83/A
51000 Rijeka, Croatia
Phone: +385 (51) 770 447
Fax: +385 (51) 686 166
www.intechopen.com

InTech China

Unit 405, Office Block, Hotel Equatorial Shanghai
No.65, Yan An Road (West), Shanghai, 200040, China
中国上海市延安西路65号上海国际贵都大饭店办公楼405单元
Phone: +86-21-62489820
Fax: +86-21-62489821

© 2012 The Author(s). Licensee IntechOpen. This is an open access article distributed under the terms of the [Creative Commons Attribution 3.0 License](#), which permits unrestricted use, distribution, and reproduction in any medium, provided the original work is properly cited.

IntechOpen

IntechOpen