

We are IntechOpen, the world's leading publisher of Open Access books Built by scientists, for scientists

4,800

Open access books available

122,000

International authors and editors

135M

Downloads

Our authors are among the

154

Countries delivered to

TOP 1%

most cited scientists

12.2%

Contributors from top 500 universities



WEB OF SCIENCE™

Selection of our books indexed in the Book Citation Index
in Web of Science™ Core Collection (BKCI)

Interested in publishing with us?
Contact book.department@intechopen.com

Numbers displayed above are based on latest data collected.

For more information visit www.intechopen.com



Diagnostic and Therapeutic Sinonasal Endoscopy in Pediatric Patients

Marco Berlucchi¹, Barbara Pedruzzi¹,
Michele Sessa² and Piero Nicolai²

¹*Department of Pediatric Otorhinolaryngology,
Spedali Civili, Brescia*

²*Department of Otolaryngology,
University of Brescia, Brescia
Italy*

1. Introduction

Fifty years ago, the extracorporeal cold light and its transmission by glass fibers, along with the Hopkins rod lens system, were introduced. The development and application of these new technologies to upper airways allowed studying, understanding, and improving knowledge of the anatomy, physiology, and diseases of the nasal cavity and sinuses. In particular, some fundamental concepts of modern rhinology are based on endoscopic nasal findings and Messerklinger's investigations of the pathophysiology of sinus mucosa. These studies radically changed traditional understanding of sinus inflammation and revolutionized its treatment using endoscopic conservative surgical management (Messerklinger, 1966, 1967, 1978). In the 1980s, Kennedy (Kennedy, 1985) first utilized this surgical technique in the United States and termed it functional endoscopic sinus surgery (FESS). At the beginning, the technique was performed only for treatment of rhinosinusitis in adult patients. In following years, the surgical indications were extended to selected malignant neoplasms (Kennedy & Senior, 1997; Lund, 1997; Nicolai et al., 2009, 2011). Due to the good results observed by FESS, in 1990s the development of smaller endoscopes and instrumentation adapted for pediatric patients was encouraged. For the treatment of recurrent or chronic rhinosinusitis in children, favorable results were obtained with endoscopic surgery (Lusk & Muntz, 1990; Wolf et al., 1995). During subsequent years, other diseases of sinuses were treated successfully with a nasal endoscopic surgical approach (Triglia & Nicollas, 1997; Berlucchi et al., 2003, 2010; Woodworth et al., 2004; Nicollas et al., 2006; Durmaz et al., 2008; Al-Mazrou et al., 2009; Presutti et al., 2009; Nicolai et al., 2010). In this chapter, a description of endonasal diagnostic techniques and a brief report of sinonasal disorders that may be effectively treated by FESS in pediatric patients are presented. Finally, fundamental surgical steps and their relation between pediatric endoscopic sinus surgery (PESS) and facial growth is briefly discussed.

2. Diagnostic nasal endoscopic procedures

The availability of adequate equipment such as flexible and rigid nasal endoscopes of various degrees and sizes (Fig. 1,2,3) is fundamental to achieve accurate endonasal diagnoses.

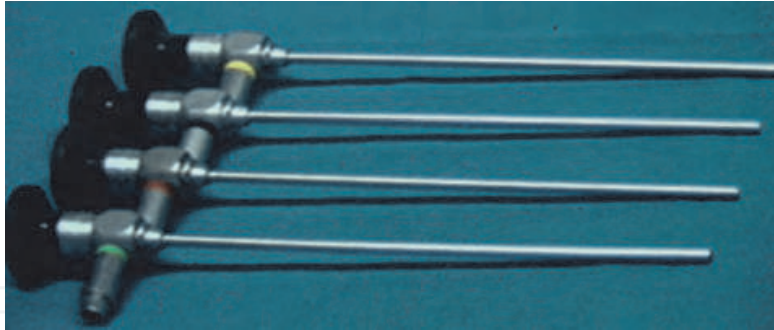


Fig. 1. Nasal rigid endoscopes.



Fig. 2. Flexible endoscope.



Fig. 3. Tips of the rigid nasal endoscopes of various degrees.

The choice of nasal endoscope is related to the age and compliance of the pediatric patient. In compliant children and in those older than 8 years, 4-mm and/or 2.7-mm rigid nasal endoscopes are usually well tolerated and provide good endoscopic nasal views. Because of possible traumatic complications, in non-compliant children and in those younger than 8 years, 3.5-mm and/or 2.5 mm flexible endoscopes must be utilized even if they provide an endonasal vision that is qualitatively inferior compared to rigid endoscopes. Before performing nasal endoscopy, cottons soaked with decongestant and local anesthetic are placed in the nasal cavities for about 10 minutes. This allows simultaneously augmenting the space of nasal fossae and obtaining a topical anesthetic effect. This may be easily performed in adolescents, whereas in toddlers and non-compliant children a local anesthetic is preferable sprayed in the nasal cavities. In infants and neonates, topical drugs are not generally utilized. During rhinoscopy, the child is placed in either a sitting position or kept in the arms of a nurse in relation to age and compliance. Nasal endoscopy must be performed correctly, meticulously, and accurately to avoid traumatic lesions of endonasal structures. Before starting endoscopic evaluation, whenever possible it is important to explain the diagnostic procedure to the child in the attempt to obtain full collaboration. After removal of cottonoids and treatment of the endoscopic lens with a thin film of anti-fog solution, the endoscope is inserted slowly and delicately in the nasal fossa. First, the floor of the nose and nasal septum, inferior nasal turbinate and its meatus are examined (Fig. 4).

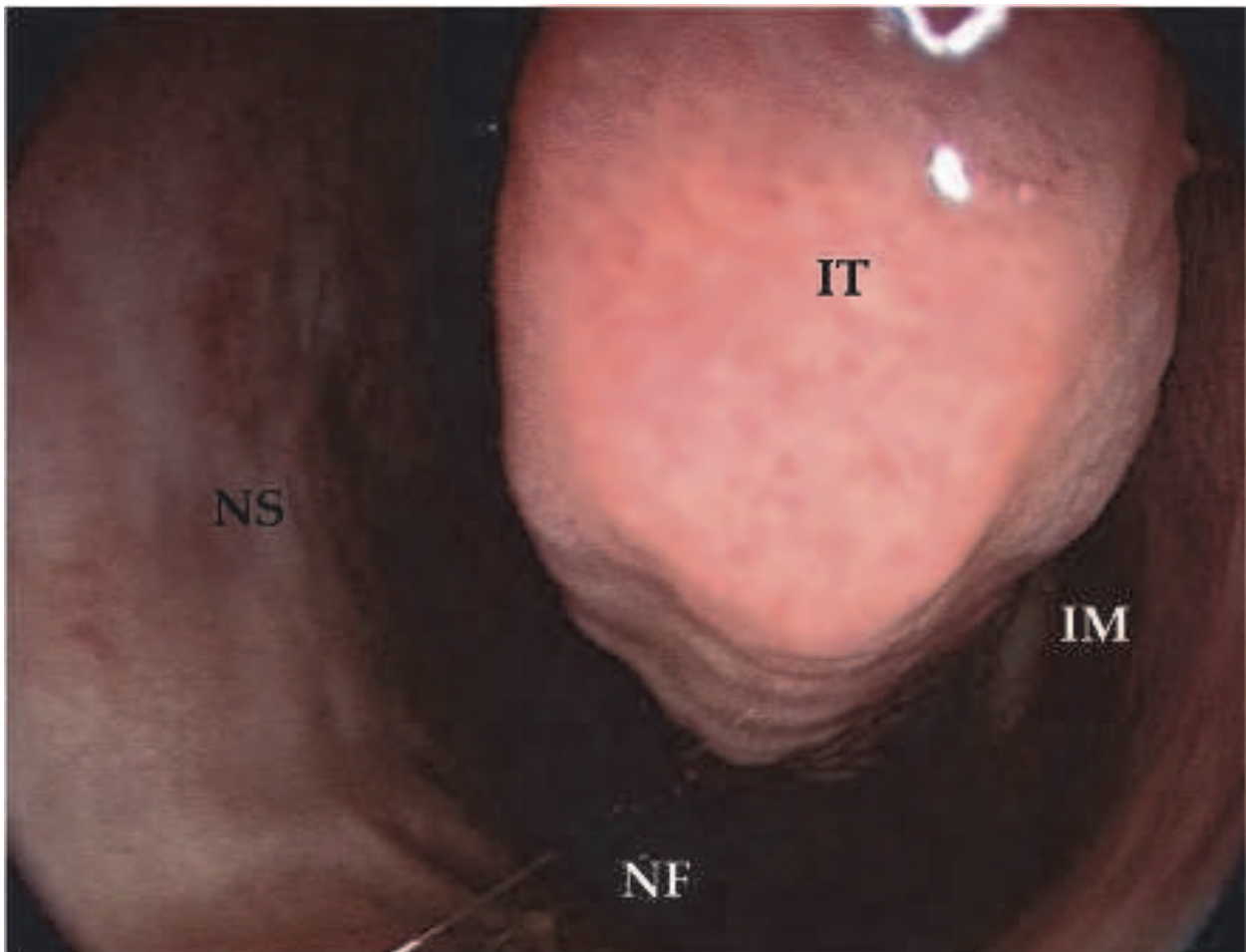


Fig. 4. Endoscopic view of the left nasal cavity: inferior turbinate (IT), inferior meatus (IM), nasal septum (NS), and nasal floor (NF).

Advancing posteriorly, the entire nasopharynx, Eustachian tube orifices, and torus tubarius can be assessed (Fig. 5).

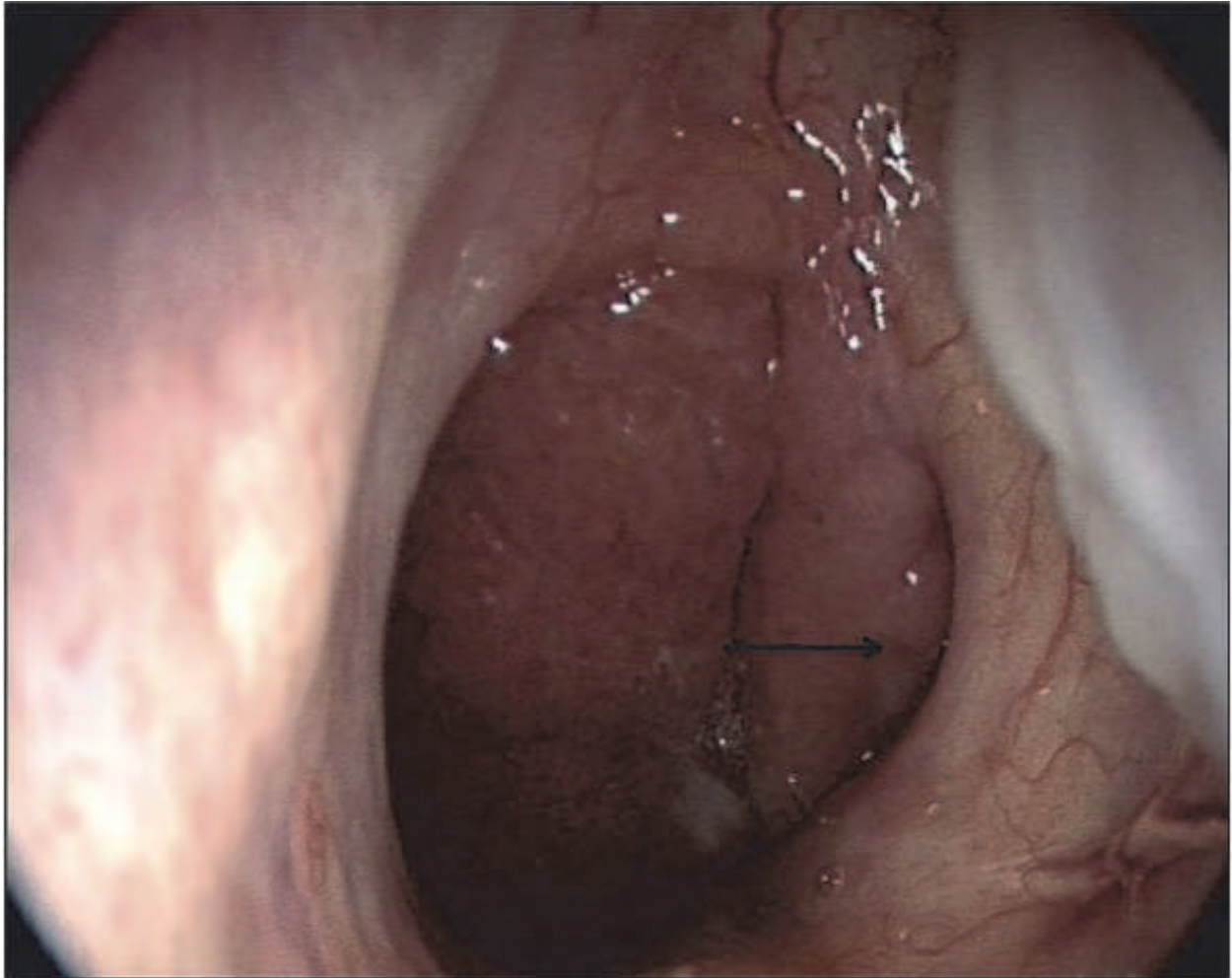


Fig. 5. Nasopharynx and left Eustachian tube orifice (arrow) at endoscopic evaluation.

Afterwards, coming back and turning the endoscope superiorly, the middle nasal turbinate and its meatus are explored (Fig. 6).

When the endoscope moves toward the uncinate process area, fontanellae, accessory maxillary sinus ostia, and sphenothmoid recess can be assessed. By rotating the endoscope superiorly when it is located anteriorly to the head of middle turbinate, it is possible to observe the anterior olfactory region. In addition to evaluation of nasal anatomy, rhinoscopy allows assessment of mucosa status, the presence and type of endonasal secretions (i.e., serous, mucous, or purulent discharge) and their suspicious origin, associated disorders, and their relationships with surrounding structures. Furthermore, rhinoscopy allows monitoring sinonasal diseases such as rhinosinusitis and adenoid hypertrophy, as well as postsurgical follow-up of nasal sinuses. It can also evaluate response to medical treatment, ease cavity debridement in the post-operative period to favor healing of the sinuses, and identify persistent or early recurrences of sinonasal lesions.

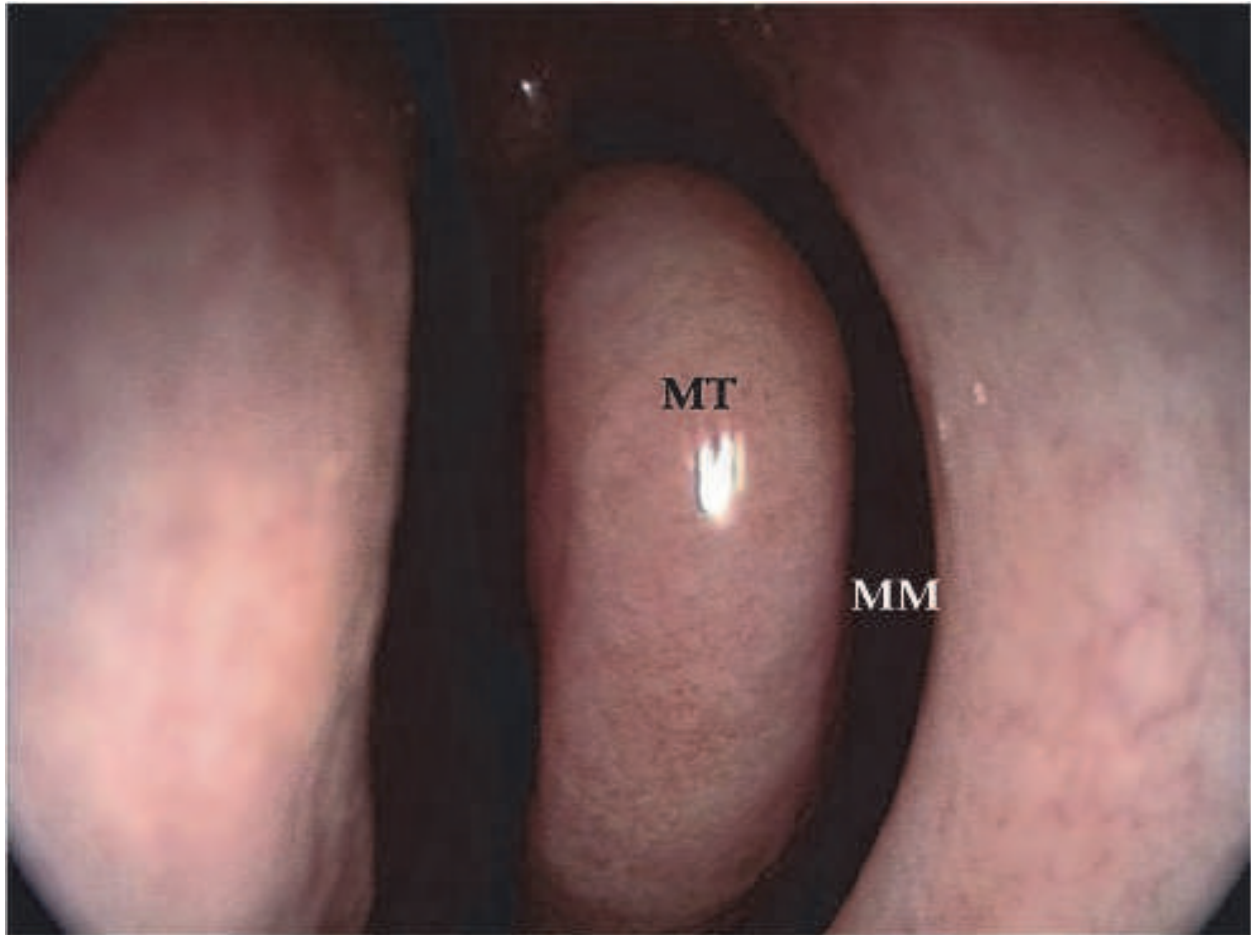


Fig. 6. Endoscopic examination of the head of the middle turbinate (MT) and middle meatus (MM).

3. Sinonasal disorders treated by endoscopic sinonasal surgery

Numerous sinonasal diseases can be successfully treated by endoscopic sinus surgery. Extensive surgical experience is mandatory to treat some sinonasal lesions and to obtain good results. Several sinonasal pathologies will be briefly discussed.

3.1 Inferior turbinate hypertrophy

Inferior turbinate hypertrophy can be either congenital or acquired. The former is rare, whereas the latter is usually due to septal deviation, allergic rhinitis, or gastroesophageal reflux disease (Kwok et al., 2007; Cingi et al., 2010). The primary presenting symptom is nasal obstruction occasionally associated with seromucosal rhinorrhea, itching, and sneezing. Moreover, chronic nasal obstruction may modify the normal function of the Eustachian tube causing effusion in the middle ear (Pelikan, 2009). Diagnosis is made by nasal endoscopy. Rhinomanometry in basal conditions and after decongestion can be added in selected cases.

3.2 Adenoid hypertrophy

Adenoid hypertrophy is probably the most frequent pathology in the pediatric population. This disorder manifests usually between 3 and 6 years of age in both sexes. Children

complain of bilateral nasal obstruction associated with snoring, rhinorrhea, mouth breathing, hyponasal speech, and cough (Berlucchi et al., 2007). In some cases, obstructive sleep apnea syndrome can also be observed. The pathology may lead to cardiorespiratory syndromes such as cor pulmonale in extreme cases. Furthermore, adenoid hypertrophy may favor other illnesses such as recurrent and effusive otitis media and recurrent/chronic rhinosinusitis. Nasal endoscopy is the gold standard diagnostic technique to evaluate adenoid size, inflammatory and infectious status, and its anatomical relationship with the nasopharyngeal orifice of Eustachian tubes. Moreover, it allows checking changes in adenoid size after medical therapy (Cassano et al., 2003; Berlucchi et al., 2007). At endoscopic assessment, adenoids appear as a single pyramid-shaped aggregation of lymphoid tissue with the apex pointed toward the nasal septum and the base at the level of the superior and posterior wall of the nasopharynx. The adenoid pad appears as a lobulated and pinkish mass, partially or totally occupying the nasopharynx (Fig. 7).

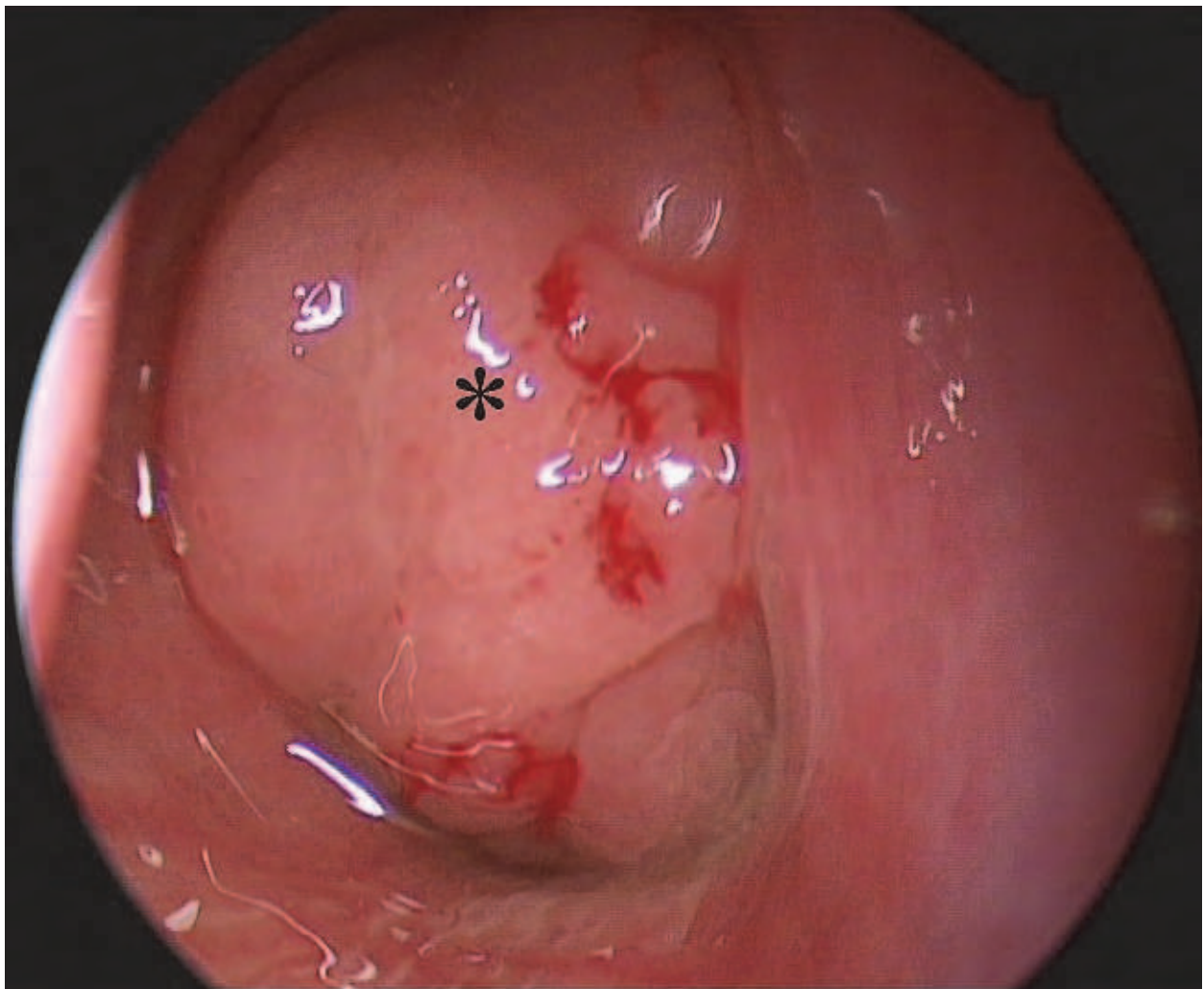


Fig. 7. Adenoid hypertrophy (asterisk) totally obstructing the right nasal fossa.

3.3 Sinonasal polyposis

Sinonasal polyposis is an uncommon pathology in pediatric subjects (Triglia & Nicollas, 1997). In the 1990s, the disorder was classified in 5 subtypes: antrochoanal polyps (this

lesion will be described separately due to its peculiar characteristics), choanal polyps, polyps associated with chronic rhinosinusitis (non-eosinophil dominated), polyps associated with chronic rhinosinusitis (eosinophil dominated), and polyps associated with specific illnesses such as cystic fibrosis, Kartagener's Syndrome, and asthma (Stammberger, 1999). Even though the etiology of sinonasal polyposis is unknown, some predisposing factors have been identified. The lesions affect both sexes and can be either monolateral or bilateral. Clinically, children complain of nasal obstruction, rhinorrhea, reduction of the sense of smell or anosmia, headache, and facial pain (Triglia & Nicollas, 1997). At nasal endoscopy, polyps show a characteristic edematous and translucent appearance (Fig. 8).

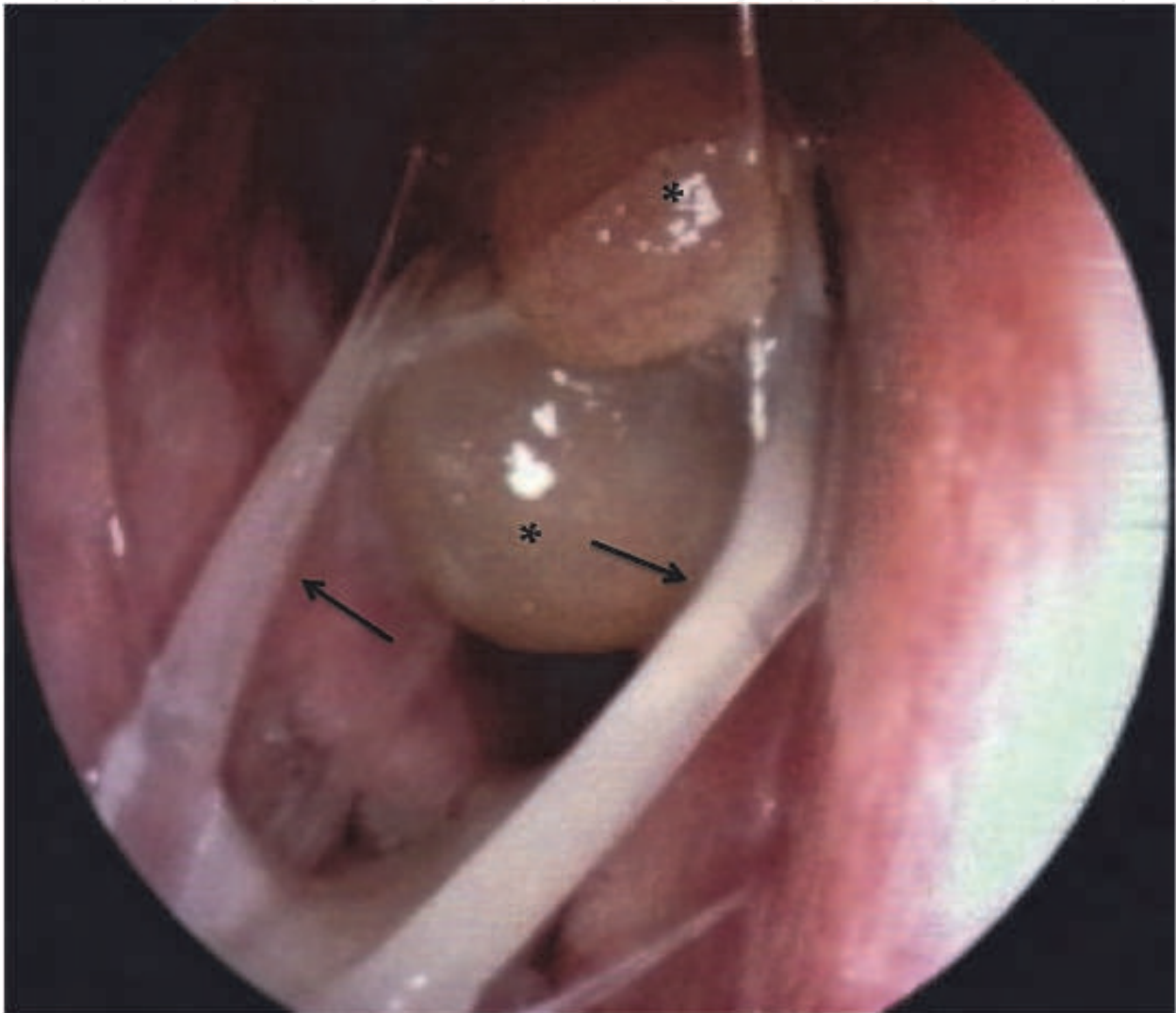


Fig. 8. Nasal polyps (asterisks) associated with mucous secretion (arrows) in a patient with cystic fibrosis.

They can fill partially or totally the nasal cavity and may be associated with a broad or narrow pedicle. Imaging is the diagnostic technique of choice, and CT of the sinuses is the gold standard procedure as it shows exact extension of disease and presence of anatomic anomalies, which may favor sinonasal polyps and/or influence surgical strategy (Triglia & Nicollas, 1997).

3.4 Antrochoanal polyp

First described by Paefyn in 1753 (Paefyn, 1753), antrochoanal polyp (ACP) or Killian's polyp is a benign, solitary, nasal polypoid lesion. It represents 4-6% of all nasal polyps in the general population (Yaman et al., 2010). It is also prevalent in the pediatric age, and ACP is found in about one-third of pediatric cases with polyps (Schramm & Efron, 1980; Basak et al., 1998; Ozdek et al., 2002; Yaman et al., 2010). The mass originates inside the maxillary sinus and as it grows it extends from the accessory or natural ostium of maxillary sinus to the middle meatus (Fig. 9), finally protruding toward the choana in the nasopharynx.

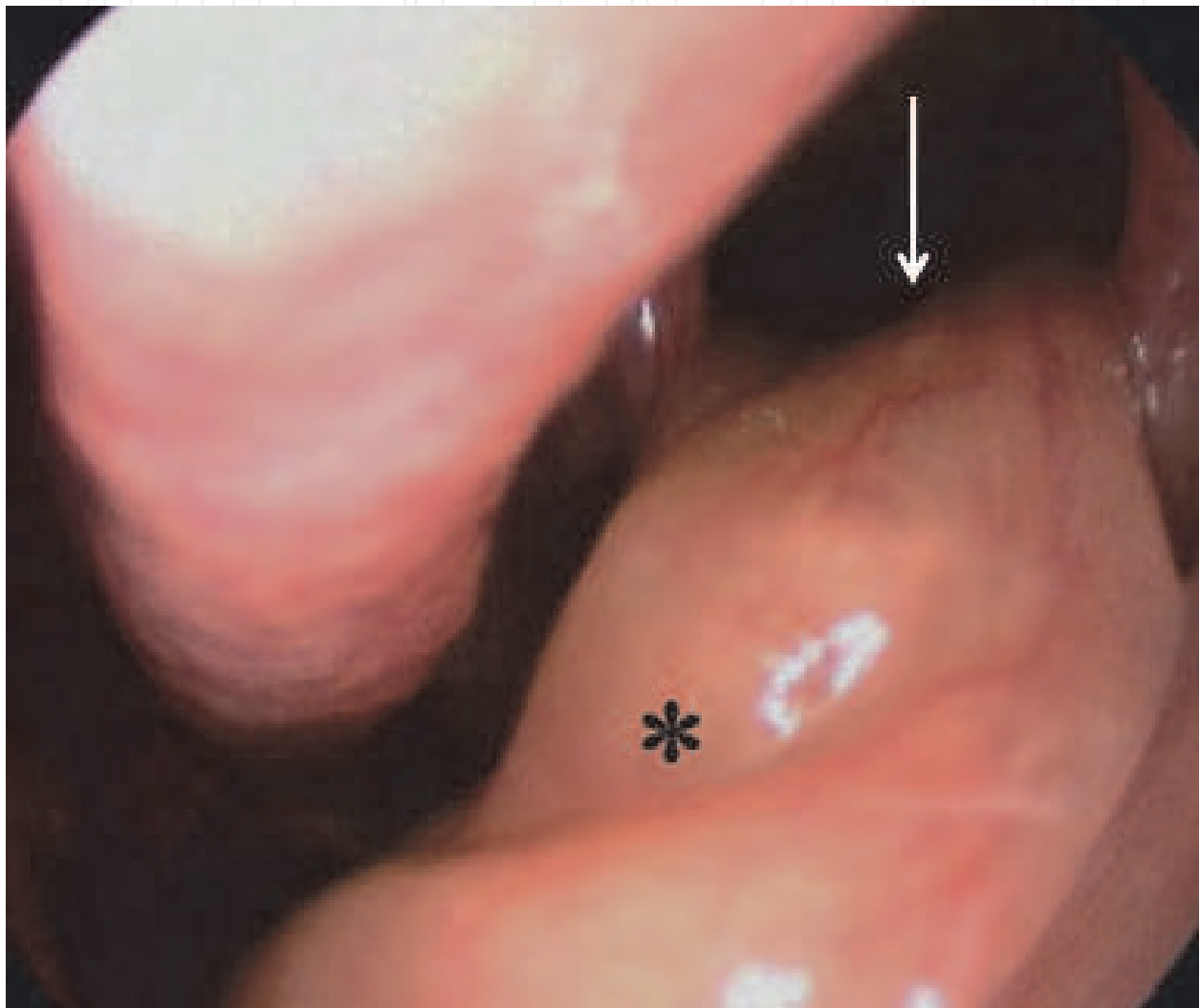


Fig. 9. Left antrochoanal polyp (asterisk) that come out from natural ostium (white arrow) of maxillary sinus.

From an etiological point of view, ACP develops from intramural Tornwaldt's cyst in the wall of the maxillary sinus. This particular origin reflects the presence of cysts in the antral portion of the polyp (Berg et al., 1988; Składzień, 2001). Chronic sinus inflammation and allergy are other factors favoring formation of ACP (Składzień et al., 2001). The disorder, whose etiology is still unknown, is usually unilateral and more frequent in males (M:F=2.1:1). ACP is composed of cystic and solid portions. The former occupies the maxillary sinus, while the latter, which generally emerges through an enlarged maxillary

accessory ostium, is found in the nasal fossa. The most common symptoms are unilateral nasal obstruction, rhinorrhea, bleeding, headache, snoring, and foreign body sensation (Orvidas et al., 2001; Aydil et al., 2008). Moreover, in 20-25% of cases nasal obstruction may be bilateral, in relation to complete blockage of the nasopharynx. Moreover, some reports have described dysphagia and dyspnea correlated with mouth extension. Nasal endoscopy and CT are the gold standard diagnostic procedures. At endoscopic examination, the lesion appears as a white and bright mass located in the middle meatus. This mass juts out the maxillary sinus and occupies the nasal fossa (Frosini et al., 2009). At imaging, ACP fills the maxillary sinus growing through the accessory or natural ostium into the middle meatus to the choana (Pruna et al., 2000). By MR, the lesion reveals hypointense T1 and enhanced T2 signals, and the cystic part is enhanced in the peripheral area after intravenous gadolinium administration (De Vuysere et al., 2001).

3.5 CSF leak

Cerebrospinal fluid (CSF) leak occurs when there is abnormal communication between the space containing CSF around the brain (subarachnoid space) and the sinonasal tract and/or the ear (middle ear/mastoid system) (Pianta et al., 2005). It implies a breach of the underlying dura mater and adherent pia-arachnoid mater resulting in a pathological communication between the intracranial cavity and either the nasal or middle ear cavity (Lloyd et al., 2008; Presutti et al., 2009). According to Ommaya's classification (Ommaya, 1976), CSF leaks can be divided into non-traumatic (with high or normal CSF pressure) and traumatic (accidental or iatrogenic lesion). About 80% and 16% of CSF leaks are due to head trauma and sinuses or skull base surgery, respectively (Beckhardt et al., 1991). Spontaneous fistulae, which are more frequent in obese females in the fourth decade of life (Pianta et al., 2005), represent 3-4% of cases (Beckhardt et al., 1991; Yerkes et al., 1992; Nachtigal et al., 1999; Schlosser & Bolger, 2002). Moreover, skull base tumors or other congenital lesions (such as untreated aqueductal stenosis) may cause CSF leaks directly through erosion of the skull base or indirectly through the development of hydrocephalus. Other congenital causes of CSF leak are the developmental of skull base defects with associated meningoceles, meningoencephaloceles, large arachnoid granulations or cysts, or congenital inner ear anomalies (Lloyd et al., 2008). If the pathogenesis of traumatic fistula is intuitive, spontaneous leaks may have a multifactorial origin. Among these, intracranial pressure, brain pulsation, cranial base pneumatization, and arachnoid pits are thought to play a major role (Pianta et al., 2005). Spontaneous CSF fistula occurs commonly at the ethmoid roof, cribriform plate, perisella of sphenoid sinus, or inferolateral or pterygoid recess (Lloyd et al., 2008). Patients with CSF leak suffer from unilateral or bilateral watery persistent or intermittent rhinorrhea with positive history for a previous head trauma or surgery of the sinonasal tract, middle ear/mastoid, or skull base. Increase of postnasal drip in the supine position may be reported. Moreover, patients can complain of a salty or sweet taste in the mouth. Recurrent meningitis should alert the physician to a diagnosis of CSF leak (Pianta et al., 2005). Intermittent clear nasal discharge may be exacerbated by the Valsalva maneuver and/or compression of both internal jugular veins (Pianta et al., 2005). When the lesion is located in the temporal bone, CSF reaches the nasopharynx via the Eustachian tube and becomes evident in most cases as bilateral clear rhinorrhea (Pianta et al., 2005). Patients with intermittent CSF leak complain frequently of headache, which appears whenever rhinorrhea stops and the CSF pressure increases (Beckhardt et al., 1991). Finally, signs and symptoms

such as headache, vomit, or edema of the papilla are suggestive for intracranial hypertension (Pianta et al., 2005). "Reservoir sign" is a feature suggestive for the presence of a CSF fistula at the sphenoid, and is due to accumulation of CSF in the sphenoid sinus when the patient is recumbent. It remains in the sinus until the patient resumes an erect position and the head is leaned forward. At that moment, fluid exits from sphenoid ostium and sudden profuse rhinorrhea becomes evident (Nuss & Costantino, 1995). Diagnosis of CSF leak includes laboratory testing, imaging, and fluorescein test. The former includes dosage of several proteins (i.e., beta-2 transferrin or beta-trace protein) on the watery fluid collected from the nose. These are polypeptides produced in the brain, leptomeninges, or choroid plexus that may be identified in nasal mucus when CFS leak is present (Bachmann et al., 2000; Lloyd et al., 2008). Radiological procedures such as CT and MR are used to localize and characterize the involved site, to evaluate for an underlying cause, and to exclude an associated meningocele or meningoencephalocele (Lloyd et al., 2008). Finally, fluorescein test is performed by intra- or peri-operative intrathecal injection of dye solution diluted with 10 ml of CFS (Pianta et al., 2005). This can allow localization of the site of leak and ensure successful closure during surgical intervention.

3.6 Rhinosinusitis

As rhinitis and sinusitis are usually simultaneous, the use of the term rhinosinusitis is medically correct. This disorder is a common upper airway infection in the pediatric age. It is an inflammation of nasal cavity and sinuses and is characterized by two or more symptoms one of which should be either nasal obstruction or nasal discharge associated or no with facial pain/pressure and reduction or loss of smell. Based on duration of symptomatology, rhinosinusitis can be divided into: 1) acute rhinosinusitis, when total resolution of aforementioned symptoms may take up to 12 weeks; 2) chronic rhinosinusitis, when clinical picture persists for more than 12 weeks; and 3) recurrent acute rhinosinusitis, when multiple acute rhinosinusitis occurs with total resolution of each acute episode (Fokkens et al., 2007). Several predisposing factors such as allergy, adenoid mass, gastroesophageal reflux disease, sinonasal anomalies (i.e., septal deviation, concha bullosa, Haller cell, choanal atresia, and paradoxical middle turbinate), immunological disorders, primary ciliary dyskinesia, cystic fibrosis, exposure to tobacco, and daycare attendance have been noted to favor rhinosinusitis (Lusk, 1992, 1997; Clement 2008). The classical triad, which is generally responsible for upper respiratory infections (i.e., *Streptococcus pneumoniae*, *Haemophilus influenzae*, and *Moraxella catarrhalis*), has been shown to be involved in most acute rhinosinusitis as well. *Staphylococcus aureus* and *anaerobes* can be occasionally found (Lieser & Derkay 2005). Clinically, rhinosinusitis is characterized by rhinorrhea, nasal obstruction, cough, headache, and facial pain. Purulent rhinorrhea, periorbital edema, and high fever may be observed in severe form. Signs and symptoms of chronic rhinosinusitis are those of the non-severe acute form, but they persist for more than 12 weeks. At rhinoscopy, diffuse mucosal inflammation associated with turbinate congestion is the typical endonasal endoscopic appearance of acute rhinosinusitis (Fig. 10).

Mucopurulent secretions can be also present and, in relation to their site, it is possible to suspect which sinuses may be affected. Purulent secretions located at middle meatus or sphenoethmoid recess are a sign of involvement of maxillary, ethmoid, and/or frontal sinus and sphenoid sinus, respectively. Under endoscopic control, cultures can be taken directly

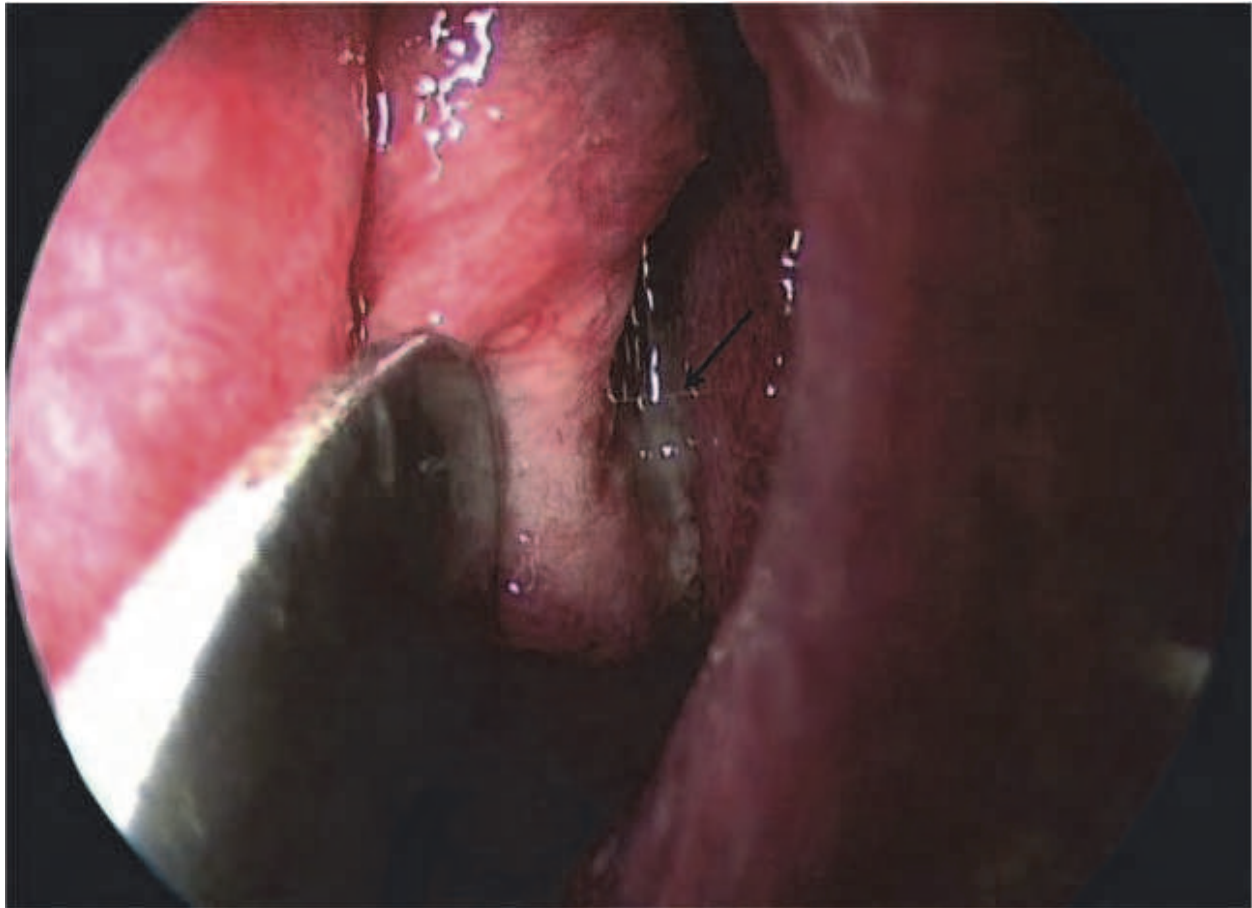


Fig. 10. Diffuse nasal mucosal inflammation and congestion of middle turbinate. After medial dislocation of middle turbinate, purulent secretion is found in the middle meatus (arrow).

from the involved meatus. Polypoid changes around the middle turbinate insertion is indicative of inflammation of the frontal sinus, whereas the presence of polyps suggests chronic rhinosinusitis (Joe et al., 2001). Moreover, nasal endoscopy allows monitoring inflammation and objectively evaluating the response to treatment. For this reason, serial endoscopic nasal examinations are mandatory to individualize therapy and, eventually, to modify antibiotic administration when no improvement is observed. Diagnosis is based on careful assessment of the patient's history and clinical picture. In dubious cases, endoscopy of nasal cavity can confirm clinical suspicion. Microbiological cultures are not routinely necessary, but when sinus infection does not improve using antibiotic therapy within 48-72 hours, occurs in an immunocompromised patient, the child is toxic or extremely ill, suppurative complications are evident, or when infectious sinonasal illness recurs 1-2 weeks after the end of medical therapy, microbiological evaluation is mandatory (Lusk & Stankiewicz, 1997; Clement, 2008). Imaging is not indicated to confirm a diagnosis of rhinosinusitis. CT is performed after failure of medical therapy and, therefore, in the planning of surgery or when surgical treatment may be considered as in the aforementioned pathological situations (Lusk & Stankiewicz, 1997). Furthermore, examinations for allergy, cystic fibrosis, immunological disease, gastroesophageal reflux, and primary ciliary dyskinesia can be performed as necessary.

3.7 Choanal atresia

Choanal atresia (CA) is a rare, congenital disease characterized by complete obstruction of the posterior nasal passages. Its incidence is 1:5000-8000 live births (Teissier et al., 2008).

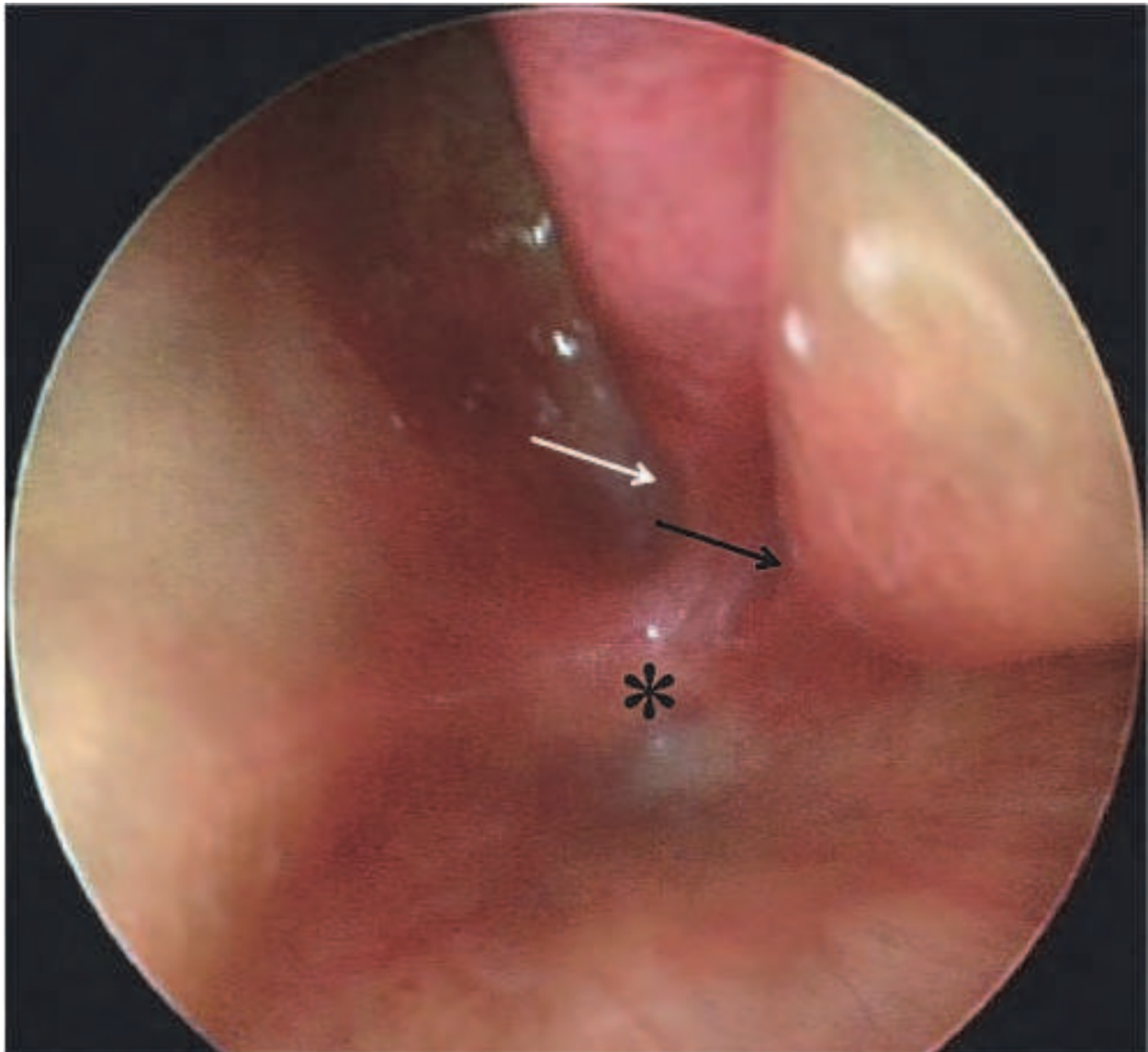


Fig. 11. Endoscopic view of the left choanal atresia (asterisk). The inferior turbinate (black arrow) and middle turbinate (white arrow) are also evident.

There is a female predominance with a F/M ratio of 5/1 among Caucasians. The lesion may be unilateral (60%) or bilateral (40%) and can be subdivided into bony (90%) or membranous (10%) types (Vatansever et al., 2005). The genetic aspect of CA remains unclear and is likely multifactorial. In 50% of patients, CA is associated with other anomalies as in the CHARGE syndrome (coloboma, heart abnormalities, CA, retarded growth and development of central nervous system, genitourinary anomalies, ear defects) (Jyonouchi et al., 2009). Several theories such as persistence of the buccopharyngeal membranes, failure of the oronasal membrane to rupture either the nasobuccal membrane of Hochstetter or buccopharyngeal membrane of the foregut, incomplete resorption of nasopharyngeal mesoderm, or locally misdirected mesodermal flow have been proposed to explain the occurrence of CA, but

none have been universally accepted. This process occurs between the 4th and 11th fetal week (Dunham & Miller, 1992; Keller & Kacker, 2000; Samadi et al., 2003). Since neonates are obligate nasal breathing, at birth bilateral choanal atresia can manifest with dyspnea, cyanosis, severe hypoxia, and suckling difficulties, whereas the unilateral form presents monolateral rhinorrhea. Its diagnosis can be late and, often, occasional. Endoscopic examination with flexible nasal endoscope is mandatory when CA is suspected. Endonasal evaluation shows complete closure of involved choana that may be associated with inflammation of nasal mucosa and mucous stagnation (Fig. 11).

Imaging is the next, fundamental diagnostic procedure. CT performed in axial and coronal projections provides a thorough assessment of CA, reveals the bony or membranous nature of the disease, and shows the narrowing of posterior nasal cavity and the thickening of the vomer (Schweinfurth, 2002).

3.8 Mucocele

Mucocele is a benign, cyst-like, locally expansile paranasal sinus mass. The pathology consists of accumulation of secretion products, aseptic slimy mucus, desquamation, and inflammation lined by the respiratory mucosa (Marks et al., 1997; Busaba & Salman, 1999), developing within a paranasal sinus associated with expansion of its bony walls as a consequence of ostium blockage. A mucocele grows slowly and expands by eroding the surrounding bony walls. The obstruction can result from congenital anomalies, chronic rhinosinusitis, previous radiotherapy and/or surgical treatment, trauma, and sinonasal neoplasms (Johnson & Ferguson, 1998; Maroldi et al., 2005). Moreover, congenital illnesses such as cystic fibrosis and primary ciliary dyskinesia are considered predisposing factors for occurrence of mucoceles (Guttenplan & Wetmore, 1989; Thomé et al., 2000; Nicollas et al., 2006; Olze et al., 2006; Berlucchi et al., 2010). Mucoceles occur more frequently in the fourth and fifth decade of life, with a similar distribution in both sexes. Paranasal sinuses mucoceles are extremely rare in a pediatric age and most cases described have been associated with cystic fibrosis (Olze et al., 2006). The frontal sinus is involved in 60% of cases, followed by the ethmoid labyrinth and maxillary sinus with 30% and less than 10% of cases, respectively. Few cases are localized in the sphenoid sinus (Som & Brandwein, 1996; Arruè et al., 1998; Lloyd et al., 2000; Caylakli et al., 2006). The higher incidence of mucoceles in the frontal sinus seems to be related to anatomical variations of the frontal recess (Arruè et al., 1998; Martin et al., 2000). Mucoceles are usually monolateral, whereas bilateral mucoceles are infrequently observed (Varghese et al., 2004). The clinical picture, which varies in relation to the sinus involved, includes nasal obstruction, rhinorrhea, headache, cheek pressure or pain associated with or without cheek swelling, maxillary nerve hyperesthesia, infra-orbital anesthesia, dental pain, loosening of teeth, periorbital pain, proptosis, blurred vision, alteration of visual acuity, diplopia, and sudden loss of vision (Avery et al., 1983; Hayasaka et al., 1991; Moriyama et al., 1992; Curtin & Rabinov, 1998; Busaba & Salman 1999; Maroldi et al., 2005; Tseng et al., 2005). Whenever erosion of the anterior or posterior wall of the frontal sinus is present, a Pott's puffy tumor or neurological symptoms may be evident (Maroldi et al., 2005). At nasal endoscopy, the appearance varies according to the site of the mucocele and the phase of growth. During the intrasinus phase, no alterations are generally visible. The subsequent expansion of the mucocele may alter the paranasal sinus bony walls. In a maxillary localization, medialization of the middle turbinate, anterior dislocation of the uncinate process (Fig. 12),

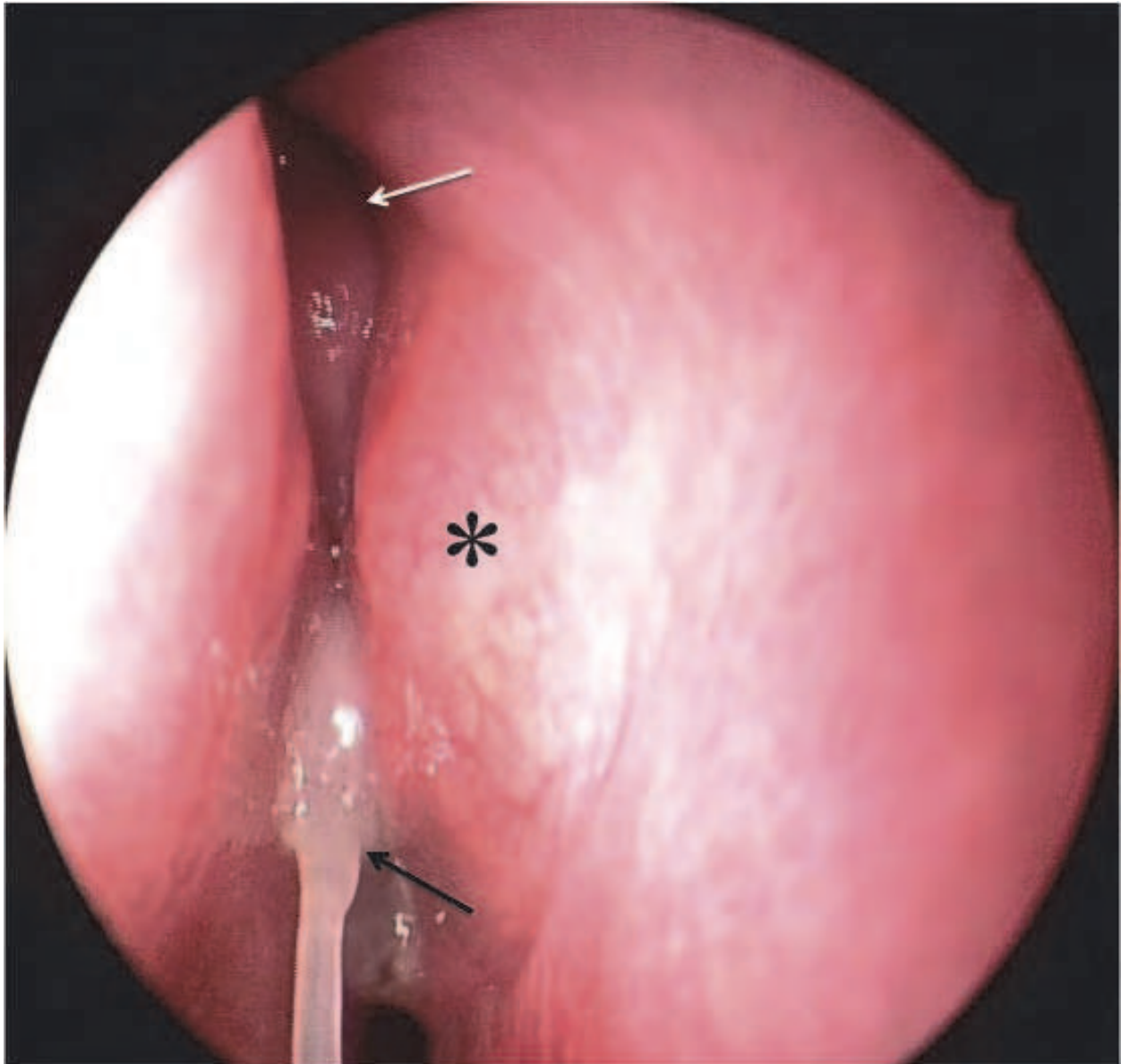


Fig. 12. Anterior displacement of the left uncinata process (asterisk) due to mucocoele of the maxillary sinus at endoscopic examination. Mucous secretion (black arrow) and middle turbinate (white arrow) are also observed.

and bulging of the agger nasi cells or the infundibular area can be observed, whereas submucosal remodeling or bulging of the sphenoid recess or posterior ethmoid can be evident in sphenoidal mucocoeles. In frontal mucocoeles, endoscopic examination is usually negative (Maroldi et al., 2005) since the lesion has expanded inferiorly to involve the agger nasi. Diagnosis is based on signs and symptoms, nasal endoscopic evaluation, and imaging. By CT, the disease appears as a homogenous lesion that completely occupies the involved sinus with smooth clear-cut margins of bone erosion of its walls (Han et al., 1995; Busaba & Salman, 1999). Moreover, CT shows the site and extension of the disease, remodeled cortex, bony erosion entity, anatomical variants, and hyperostotic changes, (Maroldi et al., 2005). MR is usually performed when mucocoele formation is secondary to sinonasal soft tissue tumors in which the lining membrane of the mucocoele will enhance after intravenous contrast (Jayaraj et al., 1999).

3.9 Meningoencephalocele

Cephalocele or encephalocele (EC) is an extracranial extension of any intracranial structure through a congenital or acquired defect of the skull base (Pianta et al., 2005). Such herniation may be represented by the leptomeninges associated with cerebrospinal fluid or it can also include the brain. The former is defined meningocele (MC), whereas the latter is termed meningoencephalocele (MEC) (Naidich et al., 1992). The incidence of EC ranges from 1 case/5,000 live births in Thailand to about 1 case/40,000 live births in western countries (Mahapatra & Suri, 2002). The disorder may be divided into occipital, parietal, basal, and syncipital types (Mc Carty et al., 1990). The latter group is subdivided into fronto-ethmoidal and interfrontal subtypes, and those associated with craniofacial clefts (C. Suwanwela & N. Suwanwela, 1972). The fronto-ethmoidal form, which accounts for about 10% of all meningoceles, includes: 1) naso-ethmoidal form that is the herniation of meninges with or without brain tissue through the anterior cranial base at the level of the foramen caecum between nasal bone and nasal cartilage; 2) naso-frontal form that occurs between nasal and frontal bones; and 3) naso-orbital form that develops between the maxilla and lacrimal bones. MEC is located at the occipital region in 75% of cases, followed in order of frequency by the frontoethmoidal and parietal area in about 15% and 10% of patients, respectively. (Hoving, 2000; Mahapatra & Aqrawal, 2006). The neural tissue in MEC was initially considered dysplastic and non-functioning, but since functioning brain has been found in some occipital and trans-sphenoidal MEC, this concept has been recently revisited (Pianta et al., 2005). MEC may cause nasal obstruction and CSF rhinorrhea. This latter symptom can be unilateral or bilateral, persistent or intermittent, and it increases or may be elicited by maneuvers elevating CSF pressure such as compression of the internal jugular veins or the Valsalva maneuver (Pianta et al., 2005). Moreover, MEC can promote alterations and distortions of surrounding facial structures such as displacement of the medial orbital wall, orbit, telecanthus, broad nasal bridge, nasal and/or glabellar swelling, and hypertelorism. Ocular and lacrimal signs and symptoms (i.e., decrease of visual acuity, strabismus, epiphora and/or dacryocystitis) can be observed (Lello et al., 1989; Morris et al., 1989). At nasal endoscopic evaluation, the lesion may appear as a smooth, isolated, pulsatile polypoid mass arising from the olfactory fossa or sphenoid sinus (Samii & Draf 1989; Pianta et al., 2005). The site of the lesion may increase upon jugular vein compression (Furstenberg sign). In addition to evaluation of the clinical picture and nasal endoscopy, diagnostic work-up of MEC must include imaging. CT can show bony defects of the craniofacial junction and the sclerotic margins of the bone defect (Pianta et al., 2005), whereas MR may reveal the relationship with brain.

3.10 Lacrimal duct stenosis

With an incidence ranging from 6 to 84%, congenital lacrimal duct obstruction is a common disorder at birth. Fortunately, most cases resolve spontaneously within the first months of life. The remaining patients will require conservative procedures (lacrimal probing and intubation) and, if symptomatology persists, non-conservative management (dacryocystorhinostomy) will be performed (Berlucchi et al., 2003). The pathology is due to lack of canalization of the lacrimal system that generally intervenes at the distal end (Hasner's valve). Epiphora and recurrent dacryocystitis represent the typical clinical picture observed. Rarely, some patients present bulging of the medial canthus that corresponds to dacryocystocele. This cystic lesion of the lacrimal sac is due to both proximal (Rosenmuller's valve) and distal (Hasner's valve) obstruction. When the lesion expands in the nasal fossa at the level of inferior meatus (Fig. 13), the patient may also complain of different degrees of nasal obstruction in relation to its size (Wong & VanderVeen, 2008); respiratory distress can also be observed in bilateral localization.



Fig. 13. Endoscopic view of a nasolacrimal duct cyst (asterisk).

At nasal endoscopy, the nasal cavity can be completely normal or, in some cases, a nasolacrimal duct cyst can be identified in the inferior meatus. Ophthalmologic and otorhinolaryngologic evaluation, dacryocystography, and CT of sinuses are the diagnostic procedures indicated or required (Berlucchi et al., 2003).

3.11 Lobular capillary hemangioma

Also known as pyogenic granuloma, telangiectatic granuloma, granuloma pedunculatum, and infected granuloma, lobular capillary hemangioma (LCH) is a benign, rapidly growing, painless, easily-bleeding, solitary lesion, which occurs in the skin and mucous membranes (Maroldi et al., 2005). Although several factors (i.e., nasal trauma, hormonal influences, viral oncogenes, underlying microscopic arteriovenous malformations, and the production of angiogenic growth factors) have been advocated to favor this disorder, its etiopathogenesis remains unknown (Puxeddu et al., 2006). In the head and neck area, the lesion commonly occurs in the oral cavity (gingiva, lips, tongue, and buccal mucosa), whereas involvement of the nasal cavity is rare (Simo et al., 1998; Ozcan et al., 2004). Sinonasal localization ranges

from 7% to 29%, and the lesion more frequently involves the anterior portion of the nasal septum and the tip of the turbinates (Maroldi et al., 2005). The disease most often occurs in the third decade of life, with a female predominance (El-Sayed & al-Serhani, 1997; Maroldi et al., 2005), whereas its occurrence in pediatric populations has been only rarely reported (Berlucchi et al., 2010). The most common symptoms of LCH of the nasal cavity are recurrent unilateral epistaxis, nasal obstruction, and nasal discharge; facial pain, hyposmia and alteration of smell, and headache are rarely present (Ozcan et al., 2004; Puxeddu et al. 2006). At nasal endoscopy, the lesion usually appears as a single reddish hypervascularized polypoid mass that bleeds easily (Fig. 14).

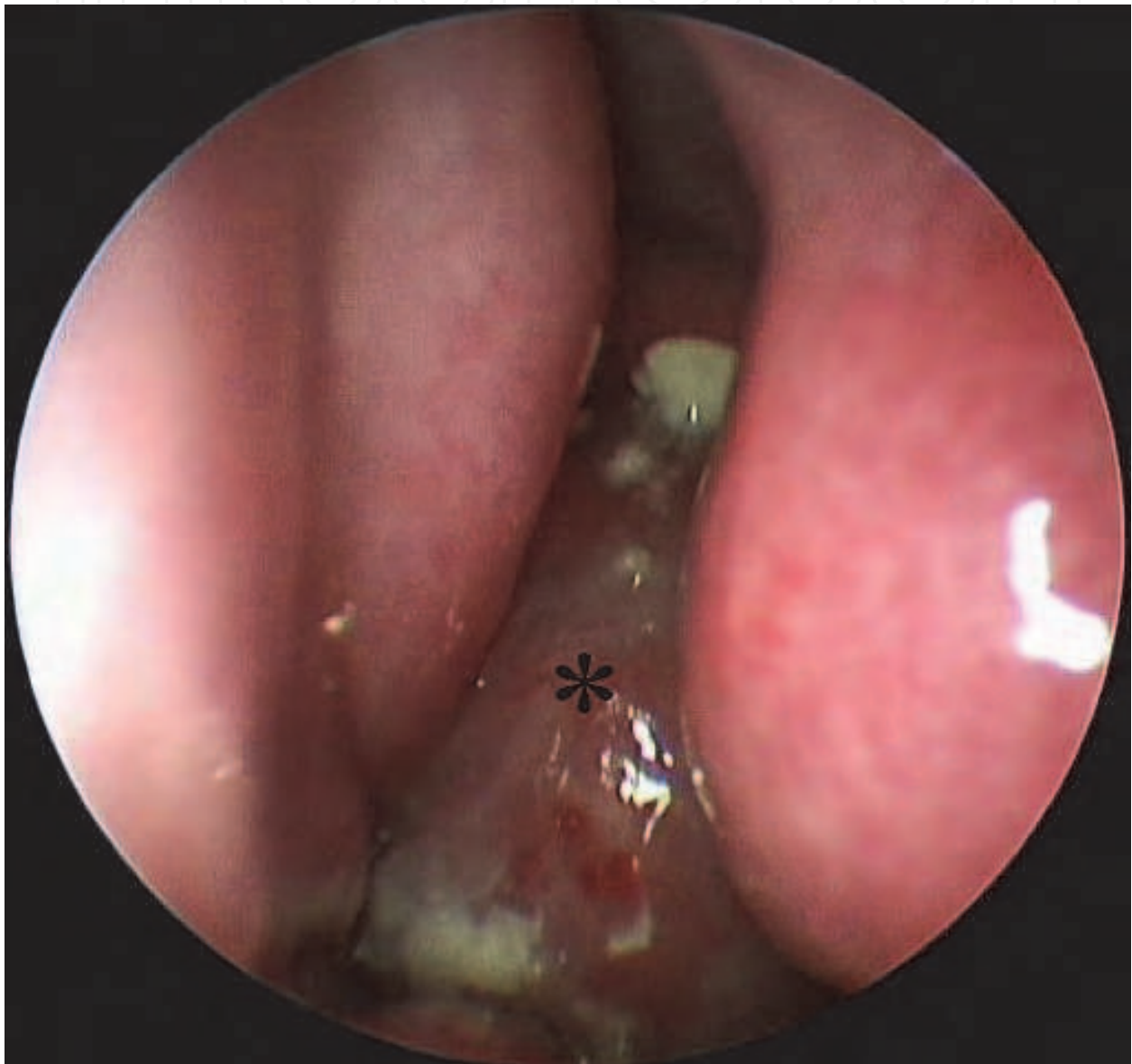


Fig. 14. Lobular capillary hemangioma (asterisk) completely occluding left nasal cavity.

When a nasal LCH is small, diagnosis is not difficult, while problems occur when the mass is relatively large and its macroscopic appearance is unclear. In these situations, imaging is mandatory (Berlucchi et al., 2010) as it reveals important features of the lesion such as size, probable site of origin, and vascularization pattern. CT shows a soft-tissue density nasal

lesion with lobulated contours. MR reveals masses with an intermediate to hyperintense signal on T2-weighted images and a hypointense signal on T1-weighted images. Enhancement after contrast administration can be helpful (Berlucchi et al., 2010).

3.12 Nasal glioma

Nasal glioma (NG), also known as nasal glial heterotopias, brain-like heterotopia, glial hamartoma, heterotopic neuroglial tissue, nasal cerebral heterotopias, cephalic brain-like heterotopias, and nasal heterotopic brain tissue (Rahbar et al., 2003; Pakkasjärvi et al., 2008), is a rare benign developmental abnormality of neurogenic origin. The peak of occurrence is between 5 and 10 years of age, with a male-to-female ratio of 3:2 (Puppala et al., 1990; Vuckovic et al., 2006). The disorder represents 0.25% of all nasal tumors and accounts for approximately 5% of all congenital nasal swellings (Dabholkar et al., 2004, Vuckovic et al., 2006). The most widely accepted etiopathogenetic theory is that NG represents an encephalocele that becomes sequestered from the brain early in gestation. This is probably due to an abnormal closure of the nasal and frontal bone (fonticulus frontalis) that can lead to an ectopic remnant of glial tissue that remains extracranially (Ma & Keung, 2006). Since it is not a true neoplasm, the term NG is actually not correct. The lesion consists of ectopic/heterotopic neural tissue with neuroglial elements and glial cells in a matrix of connective tissue with or without a fibrous connection to the subarachnoid space or dura. It can grow within the nasal region and is covered by skin or respiratory mucosa (Lowe et al., 2000, Vuckovic 2006). Moreover, 90% of NG do not contain neurons and its benign nature is demonstrated by a low proliferative activity (Dimov et al., 2001). NG can be extranasal (60% of cases), lying external to the nasal bones and cavities; intranasal (30%), lying within the nasal cavity (Fig. 15), mouth, or pterygopalatine fossa; or mixed (10%), communicating through a defect of nasal bones. Extranasal gliomas that are usually paramedian are generally located at the glabella, but can be also present laterally or at the nasal tip (Uzunlar et al., 2001; Vuckovic et al., 2006). Intranasal lesions are usually located within the nasal passage medially to the middle turbinate bone. The intranasal type is more often associated with dural attachment (35%) than the extranasal type (9%) (Kennard & Rasmussen, 1990). Finally, combined intra/extranasal gliomas have a typical dumbbell shape with a connecting band (Vuckovic et al., 2006). Patients with NG may complain of nasal obstruction, epistaxis, and cerebrospinal fluid rhinorrhea. Moreover, the lesion can be associated with deformities of the adjacent bones and nasal cartilage such as widened nose and obstruction of the nasolacrimal duct. Hypertelorism, broadening of the nasal bridge, airway obstruction, and epiphora are secondary to growth of the mass (Bradley & Singh, 1982; Fitzpatrick & Miller, 1996). At endoscopic view, NGs appear as nonpulsatile, uncompressible, gray or reddish-blue to purple, soft or firm at touch, and polypoid-like lesion. The mass, which is present on the nasal dorsum and/or arises from the lateral nasal wall, may be associated with telangiectasias of the overlying skin (Hengerer & Newburg, 1990). Neuroimaging is mandatory to identify nasal lesions, to exclude its possible intracranial connection, and to plan the optimal surgical approach (Harley 1991; Hoeger et al., 2001). Because of its potential intracranial connection, excisional biopsy or fine needle aspiration cytology should not be performed due to the risk of meningitis or cerebrospinal fluid (CSF) leak (Claros 1998).

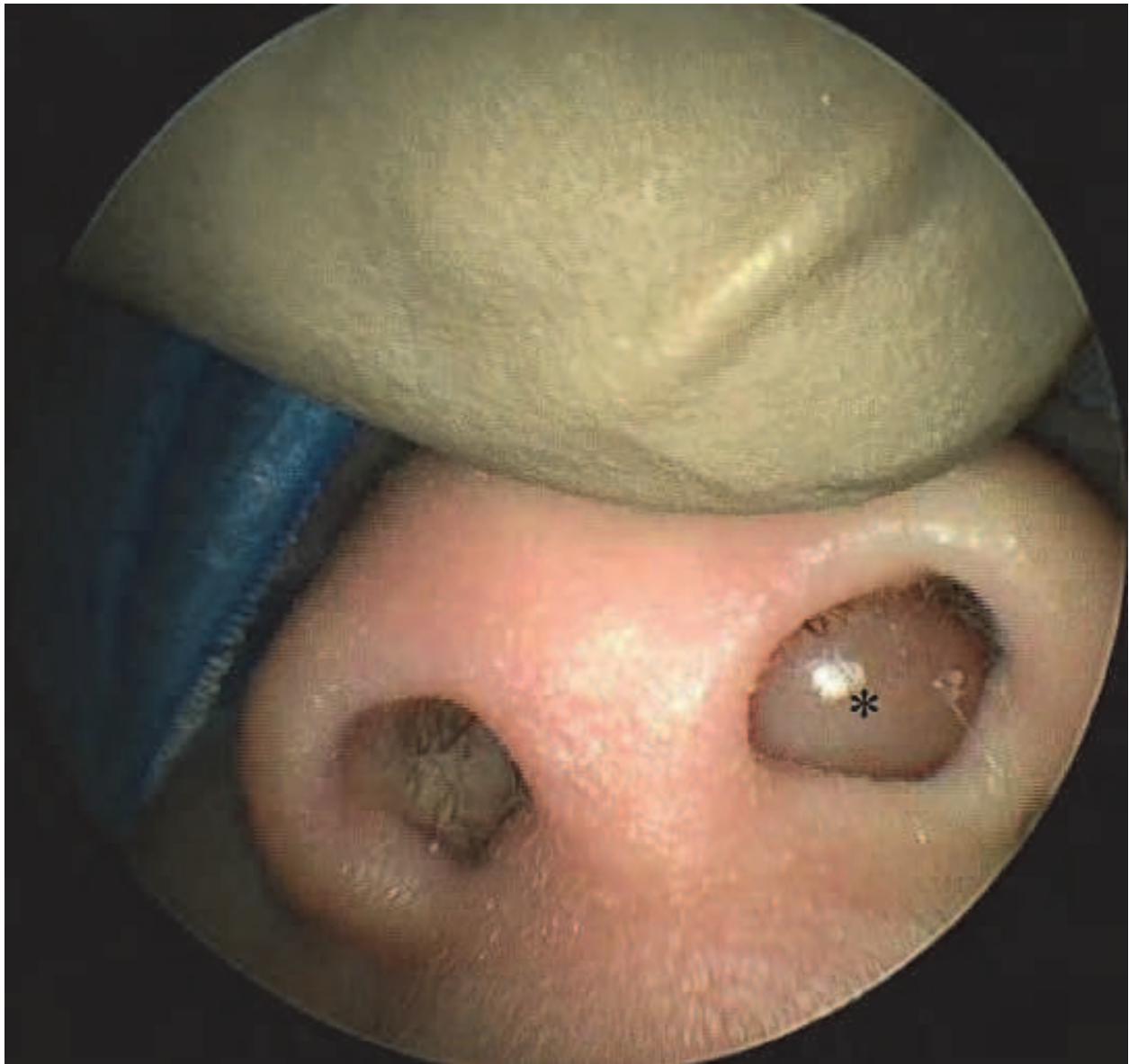


Fig. 15. Intranasal glioma (asterisk) occupying the left nasal pyriform aperture.

3.13 Juvenile angiofibroma

Juvenile angiofibroma (JA) is a highly vascular benign and locally invasive lesion that accounts around 0.05% of all head and neck neoplasms. The disorder typically occurs in adolescent males. Recently, some studies have reported that the lesion has an immunohistological and electron microscopic profile more consistent with a vascular malformation rather with a tumor (Beham et al., 1997, 2000). The site of origin of JA appears to be the sphenopalatine foramen or the bone of the vidian canal. From there, the lesion can expand to the nasopharynx, nasal fossa, paranasal sinuses, and pterygopalatine and infratemporal fossa. In some cases, involvement of the orbit and middle and anterior cranial fossa by bone erosion may be observed (Nicolai et al., 2003). Most patients present nasal obstruction associated with discharge and recurrent, spontaneous epistaxis. Due to enlargement of the tumor, facial swelling, proptosis, headache, cranial nerve palsies, and conductive hearing loss secondary to otitis media with effusion may also be observed. At

nasal endoscopic evaluation, JA appears as sessile, lobulated, rubbery and red-pink to gray mass covered by several vascular structures (Fig. 16).

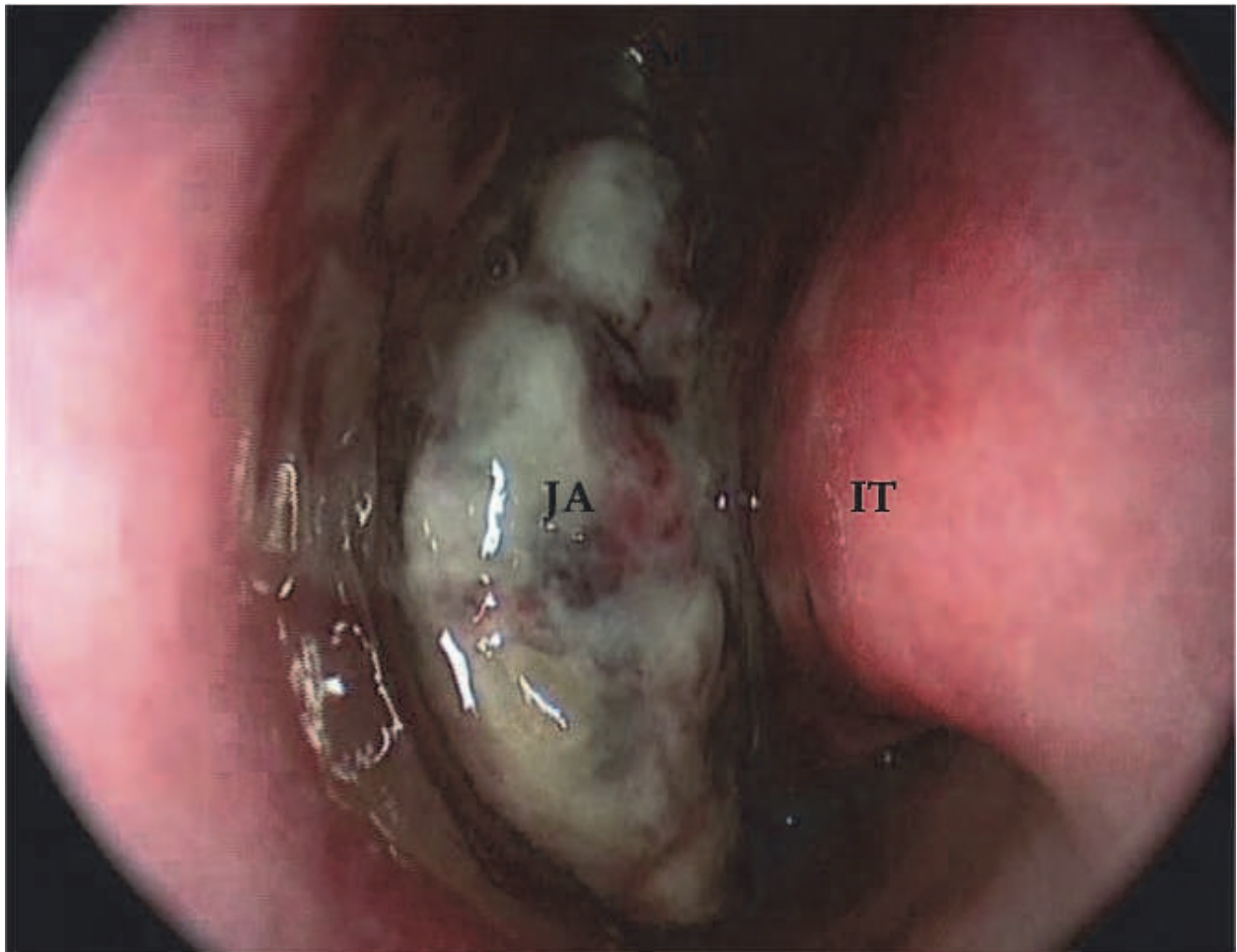


Fig. 16. Juvenile angiofibroma (JA) covered by several fibrin due a recent bleeding in the left nasal fossa. Inferior turbinate (IT).

It occupies usually the nasopharynx and nasal cavity, and it bleeds easily when touched. It may sometimes have a polypoid or pedunculated aspect. Because multiplanar evaluation of the disease and detailed information on the relationship between the lesion and important adjacent structures are needed, MR is considered the gold standard diagnostic procedure. Moreover, before surgical treatment, preoperative diagnostic assessment of the vascular pattern of the lesion by angiography is required, which should be associated with angiographic embolisation to decrease intraoperative bleeding and, consequently, the risk of perioperative transfusion (Nicolai et al., 2003). A biopsy of the lesion is not indicated due to profuse bleeding (Antonelli et al., 1987).

4. Surgical technique and its influence on facial growth

Before describing the main surgical procedures, it is fundamental to highlight some general aspects of PESS. 1) The patient must undergo preoperative CT of sinuses to evaluate anatomy, likely type of disease, and extension to plan surgical management. 2) Preoperative

antibiotic and steroid therapy is also added to reduce inflammation and infection in the sinuses. 3) PESS is always performed under general anesthesia. 4) Endoscopes of different degrees (0°, 30°, 45°, and 70°) and size (4 and 2.7 mm), adult and pediatric instrumentation sets for PESS, and microdebrider must all be available in the operating room. 5) Application of cotton decongestant pledgets in nasal fossae for 10 minutes before surgical management is helpful to increase the nasal space. 6) Surgical management must be conservative and involves only the pathological sinuses. Herein, basal procedures about PESS are reported. Since extensive and advanced endoscopic sinus procedures are beyond the scope of the present chapter, these surgical treatments will not be presented.

4.1 Middle antrostomy

Submucosal injection of 1% mepivacaine chlorohydrate and 1:200,000 epinephrine is given at the level of the root of the middle turbinate and uncinate process. The posterior edge of uncinate process and, when evident, the main ostium of maxillary sinus are probed with a small seeker. Next, partial uncinectomy with conservation of its upper third is performed usually with back-biting forceps. When necessary, the natural ostium of the maxillary sinus can be widened both posteriorly and inferiorly. The risk-areas are nasolacrimal duct, sphenopalatine foramen, and lamina papyracea sited anteriorly, posteriorly, and superiorly, respectively.

4.2 Anterior and posterior ethmoidectomy

After removal of the uncinate process, the anterior wall of the ethmoid bulla is evident and may be opened. This surgical step may be performed by a microdebrider or Weil forceps, and must be achieved medially and inferiorly avoiding damage to the orbit and roof of sinus. At this point, basal lamella is exposed. When needed, the basal lamella is perforated by Weil forceps or microdebrider at the infero-medial portion to prevent damage to the lamina papyracea and fovea ethmoidalis which are situated laterally and superiorly, respectively. Next, each bony lamella is opened and removed. During this surgical step, the optic nerve, located posteriorly and superiorly, can be identified.

4.3 Sphenoidotomy

This is performed through transnasal, transethmoidal, or trans-septal approach, and the opening of sphenoid sinus is achieved only if the pathology involves this sinus. In this surgical procedure, instruments are utilized at an infero-medial angle to avoid injury of the optic nerve and internal carotid artery, which lie at the lateral wall of the sinus.

4.4 Frontal sinusotomy

Frontal sinusotomy is only rarely performed in pediatric patients as sinusotomy of the frontal sinus is highly challenging due to its small recess and anatomical position. A standard anterior ethmoidectomy associated with opening of agger nasi is usually sufficient to identify the frontal recess. If necessary, it can be enlarged using angle circular-biting forceps. It is mandatory do not to strip mucosa to avoid a secondary frontal stenosis.

4.5 Potential effects of PESS on midfacial and sinus development

Even though the use of PESS is diffuse worldwide, its potential effects on sinus development and midfacial growth are still object of discussion. In 1995, Wolf et al.

reviewed 124 children undergoing PESS for chronic recurrent rhinosinusitis. The mean age of patients was 12 years, with 3 children under 5 years. Based on a questionnaire about patient satisfaction and symptomatic relief, it was found that endoscopic surgical sinus surgery had no clinically relevant effects on facial bone development. In our opinion, these results might be influenced by the fact that only 25% of patients were under the age of 5 years, an age during which there is rapid growth of the sinuses. In 1996, Kosko et al. described 5 children who underwent PESS for recurrent rhinosinusitis at a median age of 30 months. After a mean follow-up of 42 months, these patients still complained of signs and symptoms of recurrent rhinosinusitis. For this reason, CT was performed in all children. Imaging revealed maxillary sinus hypoplasia in all patients without clinically apparent facial asymmetry. The authors concluded that this radiological finding might be related to endoscopic sinus surgery. In 2000, Senior et al. assessed the quantitative long-term impact of PESS on sinus development. In this study, 8 children who underwent PESS for periorbital or orbital sinusitis were reviewed after a mean follow-up of 6.9 years. Control groups included 9 adults without signs of rhinosinusitis on imaging and 10 adult patients with a clinical history of childhood sinus symptoms and CT-positive for rhinosinusitis. No significant differences in sinus volumes were observed among groups. In 2002, Bothwell et al. analyzed the long-term outcome of facial growth after PESS in a retrospective age-matched study. The study and control groups included 46 children who underwent PESS for chronic rhinosinusitis and 21 children who did not undergo intervention, respectively. Quantitative anthropomorphic and qualitative analyses were performed in all cases. No statistical differences in facial growth were identified between the two patient groups.

In 2006, Van Peteghem & Clement evaluated the influence of PESS on facial growth in a prospective study. The patient cohort consisted of 23 children with cystic fibrosis of whom 13 underwent endonasal surgical treatment for massive nasal polyposis. After a follow-up of at least 10 years, cephalometric measurements were performed in the surgical patients and compared with those obtained in non-surgical group. No significant differences were found. Thus, even if the available evidence seems to indicate that PESS does not significantly affect growth and development of sinuses, analysis of potential surgical effects during rapid growth on facial skeleton has not been well assessed and warrants further investigation.

5. Conclusion

The introduction of rigid and flexible endoscopes has radically changed both diagnosis and therapeutic approaches to sinonasal diseases in pediatric patients. Endoscopy of the nasal cavities and nasopharynx permits observation of important anatomical areas that were previously not visible, evaluating macroscopic characteristics of the sinonasal lesions and their relationship with the endonasal structures. When associated with imaging of the sinuses, it may influence therapeutic planning. Consecutive endoscopic nasal procedures can also monitor sinonasal illnesses and their response to medical therapy. Subsequent development of PESS permitted the possibility to perform targeted and conservative treatments. In the post-operative period, rhinoscopy facilitates accurate debridement of nasal fossae and sinuses, promoting their healing. Finally, the performance of regular endoscopic nasal follow-up may identify early recurrences of sinonasal pathologies.

6. References

- Al-Mazrou, K.A.; Al-Qahtani, A. & AL-Fayez, A.L. (2009). Effectiveness of transnasal endoscopic powered adenoidectomy in patients with choanal adenoids. *Int J Pediatr Otorhinolaryngol*, Vol.73, No.12, (December 2009), pp. 1650-2
- Alvarez, R.J. & Liu, N.J. (1997). Pediatric ethmoid mucoceles in cystic fibrosis: long-term follow-up of reported cases. *Ear Nose throat J*, Vol.76, No.8, (August 1997), pp. 538-9, pp. 543-6
- Arrué, P.; Kany, M.T.; Serrano, E.; Lacroix, F.; Percodani, J.; Yardeni, E.; Pessey, J.J. & Manelfe, C. (1998). Mucoceles of the paranasal sinuses: uncommon location. *J Laryngol Otol*, Vol.112, No.9, (September 1998), pp. 840-4
- Avery, G.; Tang, R.A. & Close, L.G. (1983). Ophthalmic manifestations of mucoceles. *Ann Ophthalmol*, Vol.15, No. 8, (August 1983), pp. 734-7
- Aydil, U.; Karadeniz H. & Sahin C. (2008). Choanal polyp originated from the inferior nasal concha. *Eur Arch Otorhinolaryngol*, Vol.265, No.4, (April 2008), pp. 477-479
- Bachmann, G.; Nekic, M. & Michel, O. (2000). Clinical experience with beta-trace protein as a marker for cerebrospinal fluid. *Ann Otol Rhinol Laryngol*, Vol.109, No.12 Pt 1, (December 2000), pp. 1099-102
- Basak, S.; Karaman, C.Z.; Akdilli A. & Metin K.K. (1998). Surgical approaches to antrochoanal polyps in children. *Int J Pediatr Otorhinolaryngol*, Vol.46, No.3, (December 1998), pp. 197-205
- Beckhardt, R.N.; Setzen M. & Carras R. (1991). Primary spontaneous cerebrospinal fluid rhinorrhea. *Otolaryngol Head Neck Surg*, Vol.104, No.4, (April 1991), pp. 425-432
- Beham, A.; Kainz, J.; Stammberger, H.; Auböck, L. & Beham-Schmid, C. (1997). Immunohistochemical and electron microscopical characterization of stromal cells in nasopharyngeal angiofibromas. *Eur Arch Otorhinolaryngol*, Vol.254, No.4, (April 1997), pp. 196-9
- Beham, A.; Beham-Schmid, C.; Regauer, S.; Auböck, L. & Stammberger, H. (2000). Nasopharyngeal angiofibroma: true neoplasm or vascular malformation? *Adv Anat Pathol*, Vol.7, No.1, (January 2000), pp. 36-46
- Berg, O.; Carnfelt, C.; Silfversward C. & Sobin A. (1988). Origin of the choanal polyp. *Arch Otolaryngol Head Neck Surg*, Vol.114, No. 11, (November 1988), pp. 1270-1
- Berlucchi, M.; Staurengi, G.; Rossi Brunori, P.; Tomenzoli, D. & Nicolai, P. (2003). Transnasal endoscopic dacryocystorhinostomy for the treatment of lacrimal pathway stenoses in pediatric patients. *Int J Pediatr Otorhinolaryngol*, Vol.67, No.10, (October 2003), pp. 1069-74
- Berlucchi, M.; Salsi, D.; Valetti, L.; Parrinello, G. & Nicolai P. (2007). The role of mometasone furoate aqueous nasal spray in the treatment of adenoid hypertrophy in the pediatric age: preliminary results of a prospective randomized study. *Pediatrics*, Vol.119, No. 6, (June 2007), pp. e1392-7
- Berlucchi, M.; Maroldi, R.; Aga, A.; Grazzani, L. & Padoan, R. (2010). Ethmoid mucocele: a new feature of primary ciliary dyskinesia. *Pediatr Pulmonol*, Vol.45, No. 2, (February 2010), pp. 197-201

- Berlucchi, M.; Pedruzzi, B. & Farina, D. (2010). Radiology quiz case 2. Lobular capillary hemangioma (LCH). *Arch Otolaryngol Head Neck Surg*, Vol.136, No. 11, (November 2010), pp. 1141, 1143
- Bothwell, M.R.; Piccirillo, J.F.; Lusk, R.P. & Ridenour B.D. (2002). Long-term outcome of facial growth after functional endoscopic sinus surgery. *Otolaryngol Head Neck Surg*, Vol.126, No.6, (June 2002), pp. 628-34
- Bradley, P.J. & Singh S.D. (1982). Congenital nasal masses: diagnosis and management. *Clin Otolaryngol Allied Sci*, Vol.7, No.2, (April 1982), pp. 87-97
- Busaba, N.Y. & Salman, S.D. (1999). Maxillary sinus mucoceles: clinical presentation and long-term results of endoscopic surgical treatment. *Laryngoscope*, Vol.109, No.9, (September 1999), pp. 1446-9
- Cassano, P.; Gelardi, M.; Cassano, M.; Fiorella, M.C. & Fiorella R. (2003) Adenoid tissue rhinopharyngeal obstruction grading based on fibroendoscopic findings: a novel approach to therapeutic management. *Int J Ped Otorhinolaryngol*, Vol.61, No.12, (December 2003), pp. 1303-9
- Caylakli, F.; Yavuz, H.; Cagici, A.C. & Ozluoglu L.N. (2006). Endoscopic sinus surgery for maxillary sinus mucoceles. *Head Face Med*, Vol.6, No.2, (September 2006), pp. 29
- Cingi, C.; Ure, B.; Cakli, H. & Ozudogru E. (2010). Microdebrider-assisted versus radiofrequency-assisted inferior turbinoplasty: a prospective study with objective and subjective outcome measures. *Acta Otorhinolaryngol Ital*, Vol.30, No.3, (June 2010), pp. 138-43
- Clarós, P.; Bandos, R.; Clarós, A. Jr; Gilea, I.; Clarós, A. & Real, M. (1998). Nasal gliomas: main features, management and report of five cases. *Int J Pediatr Otorhinolaryngol*, Vol.46, No.1-2, (November 1998), pp. 15-20
- Clement, P.A.R. (2008). Rhinosinusitis in children. In: *Pediatric ENT*, J.M. Graham; G.K. Scadding & P.D. Bull, (Eds.), 307-25, Springer, Berlin, Germany
- Curtin, H.D. & Rabinov J.D. (1998). Extension to the orbit from paraorbital disease. The sinuses. *Radiol Clin North Am*, Vol.36, No.6, (November 1998), pp. 1201-13
- Dabholkar, J.P.; Sathe N.U. & Patole A.D. (2004). Nasal Glioma - A diagnostic challenge. *Ind J Otolaryngol Head Neck Surg*, Vol.56, No.1, (January 2004), pp. 27-28
- De Vuysere S.; Hermans R. & Marchal G. Sinochoanal polyp and its variant, the angiomatous polyp: MRI findings. *Eur Radiol*, Vol.11, No.1, pp. 55-8
- Dimov, P.; Rouev, P.; Tenev, K.; Krosneva, R. & Valkanov, P. (2001). Endoscopic surgery for the removal of a nasal glioma: case report. *Otolaryngol Head Neck Surg* Vol.124, No.6, (June 2001), pp. 690
- Dunham, M.E. & Miller R.P. (1992). Bilateral choanal atresia associated with malformation of the anterior skull base: embryogenesis and clinical implications. *Ann Otol Rhinol Laryngol*, Vol.101, No.11, (November 1992), pp. 916-9
- Durmaz, A.; Tosun, F.; Yldrm, N.; Sahan, M.; Kvrakdal, C. & Gerek M. Transnasal endoscopic repair of choanal atresia: results of 13 cases and meta-analysis. *J Craniofac Surg*, Vol.19, No.5, (September 2008), pp. 1270-4
- el-Sayed, Y. & al-Serhani A. (1997). Lobular capillary haemangioma (pyogenic granuloma) of the nose. *J Laryngol Otol*, Vol.111, No.10, (October 1997), pp. 941-5

- Fitzpatrick, E. & Miller R.H. (1996). Congenital midline nasal masses: dermoids, gliomas, and encephaloceles. *J La State Med Soc*, Vol.148, No.3, (March 1996), pp. 93-6
- Fokkens, W.; Lund, V.; Mullol, J. & European Position Paper on Rhinosinusitis and Nasal Polyps group. (2007). European position paper on rhinosinusitis and nasal polyps 2007. *Rhinol Suppl* 20, pp.1-136
- Frosini, P.; Picarella, G. & De Campora E. (2009). Antrochoanal polyp: analysis of 200 cases. *Acta Otorhinolaryngol Ital*, Vol.29, No.1, (February 2009), pp. 21-6
- Guttenplan, M.D. & Wetmore, R.F. (1989). Paranasal sinus mucocele in cystic fibrosis. *Clin Pediatr (Phila)*, Vol.28, No.9, (September 1989), pp. 429-30
- Han, M.H.; Chang, K.H.; Lee, C.H.; Na, D.G.; Yeon K.M. & Han M.C. (1995). Cystic expansile masses of the maxilla: differential diagnosis with CT and MR. *AJNR Am J Neuroradiol*, Vol.16, No.2, (February 1995), pp. 333-8
- Harley, E.H. (1991). Pediatric congenital nasal masses. *Ear Nose Throat J*, Vol.70, No.1, (January 1991), pp. 28-32
- Hayasaka, S.; Shibasaki, H.; Sekimoto, M.; Setogawa, T. & Wakutani, T. (1991). Ophthalmic complications in patients with paranasal sinus mucopyoceles. *Ophthalmologica*, Vol.203, No.2, pp. 57-63
- Hengerer, A.S. & Newburg J.A. (1990). Congenital malformations of the nose and paranasal sinuses. In: *Pediatric Otolaryngology*, 2nd edition, C.D. Bluestone; S.E. Stool & M.D. Scheetz, (Eds.), 718-28, W.B. Saunders Company, Philadelphia, U.S.A.
- Hoeger PH, Schaefer H, Ussmueller J, Helmke K. Nasal glioma presenting as capillary haemangioma. *Eur J Pediatr* 2001;160: 84-7
- Hoving, E.W. (2000). Nasal Encephaloceles. *Child's Nerv Syst*, Vol.16, pp. 702-6
- Jayaraj, S.M.; Patel, S.K.; Ghufloor, K. & Frosh, A.C. (1999). Mucocoeles of the maxillary sinus. *Int J Clin Pract*, Vol.53, No.5, (July-August 1999), pp. 391-3
- Jyonouchi, S.; McDonald -Mc-Ginn, D.M.; Bale, S.; Zackai, E.H. & Sullivan, K.E. (2009). CHARGE (coloboma, heart defect, atresia choanae, retarded growth and development, genital hypoplasia, ear anaomalies/deafness) syndrome and chromosome 22q11.2 deletion syndrome: a comparison of immunologic and nonimmunologic phenotypic features. *Pediatrics*, Vol.123, No.5, (May 2009), pp. e871-7
- Joe, S.A.; Bolger, W.E.; & Kennedy, D.W. (2001). Nasal endoscopy: diagnosis and staging of inflammatory sinus disease, In: *Diseases of the sinuses. Diagnosis and management*, D.W. Kennedy; W.E. Bolger & S.J. Zinreich, (Eds.), 119-128, B.C. Decker Inc, London, England
- Johnson, J.T. & Ferguson, B.J. (1998). Infection. In: *Otolaryngology, Head and Neck Surgery*, 3rd edition, C.W. Cummings; J.M. Fredrickson, L.A. Harker; C.J. Krause; D.E. Schuller; M.A. Richardson, (Eds.), 1115-6, Mosby, St. Louis, U.S.A.
- Keller, J.L. & Kacker, A. (2000). Choanal atresia, CHARGE association, and congenital nasal stenosis. *Otolaryngol Clin North Am*, Vol.33, No.6, (December 2000), pp. 1343-51
- Kennard, C.D. & Rasmussen J.E. (1990). Congenital midline nasal masses: diagnosis and management. *J Dermatol Surg Oncol*, Vol.16, No.11, (November 1990), pp. 1025-36

- Kennedy, D.W. (1985). Functional endoscopic sinus surgery. Technique. *Arch Otolaryngol*, Vol.111, No.10, (October 1985), pp. 643-9
- Kennedy, D.W. & Senior B.A. (1997). Endoscopic sinus surgery. A review. *Otolaryngol Clin North Am*, Vol.30, No.3, (June 1997), pp. 313-30
- Kwok, J.; Leung, MK. & Koltai, P. (2007). Congenital inferior turbinate hypertrophy: an unusual cause of neonatal nasal obstruction. *Int J Pediatr Otorhinolaryngol Extra*, Vol.2, No.1, (March 2007), pp. 26-30
- Kosko, J.R.; Hall, B.E. & Tunkel, D.E. (1996). Acquired maxillary sinus hypoplasia: a consequence of endoscopic sinus surgery? *Laryngoscope*, Vol.106 No.10, (October 1996), pp. 1210-3
- Lello, G.E.; Sparrow, O.C. & Gopal, R. (1989). The surgical correction of fronto-ethmoidal meningo-encephaloceles. *J Craniomaxillofac Surg* Vol.17, No.7, (October 1989), pp. 293-8
- Lieser, J.D. & Derkay, C.S. (2005). Pediatric sinusitis: when do we operate? *Curr Opin Otolaryngol Head Neck Surg*, Vol.13, No.1, (February 2005), pp. 60-6.
- Lloyd, G.; Lund, V.J.; Savy L. & Howard D. (2000). Optimum imaging for mucocoeles. *J Laryngol Otol*, Vol.114, No.3, (March 2000), pp. 233-6
- Lloyd, K.M.; Del Gaudio, J.M. & Hudgins, P.A. (2008). Imaging of skull base cerebrospinal fluid leaks in adults. *Radiology*, Vol.248, No.3, (September 2008), pp. 725-36
- Lowe, L.H.; Booth, T.N.; Joglar, J.M. & Rollins, N.K. (2000). Midface anomalies in children. *Radiographics*, Vol.20, No.5, (September-October 2000), pp. 907-22
- Lund, V.J. Extended applications of endoscopic sinus surgery – the territorial imperative. *J Laryngol Otol* Vol.111, No.4, (April 1997), pp. 313-5
- Lusk, R.P. & Muntz, H. (1990). Endoscopic sinus surgery in children with chronic sinusitis: a pilot study. *Laryngoscope*, Vol.100, No.6, (June 1990), pp. 654-8
- Lusk, R.P. (1992). *Pediatric sinusitis*. Raven, New York, U.S.A.
- Lusk, R.P. & Stankiewicz, J.A. (1997). Pediatric rhinosinusitis. *Otolaryngol Head Neck Surg*, Vol.117, No.2, (September 1997), pp. S53-S57
- Ma, K.H. & Keung, K.L. (2006). Nasal glioma. *Hong Kong Med J*, Vol.12, No.6, (December 2006), pp. 477-9
- Mahapatra, A.K. & Suri, A. (2002). Anterior Encephaloceles: a study of 92 Cases. *Pediatr Neurosurg*, Vol.36, No.3, (March 2002), pp. 113-8
- Mahapatra, A.K. & Agrawal D. (2006). Anterior encephaloceles: a series of 103 cases over 32 years. *J Clin Neurosci*, Vol.13, No.5, (June 2006), pp. 536-9
- Marks, S.C.; Latoni J.D. & Mathog R.H. (1997). Mucocoeles of the maxillary sinus. *Otolaryngol Head Neck Surg*, Vol.117, No.1, (July 1997), pp. 18-21
- Maroldi, R.; Berlucchi, M.; Farina, D.; Tomenzoli, D.; Borghesi, A. & Pianta, L. Benign neoplasms and tumor-like lesions. In: *Imaging in treatment planning for sinonasal diseases*, R. Maroldi & P. Nicolai, (Eds.), 107-158, Springer, Berlin, Germany
- Martin, R.J.; Jackman, D.S.; Philbert, R.F. & McCoy J.M. (2000). Massive proptosis of the globe. *J Oral Maxillofac Surg*, Vol.58, No.7, (July 2000), pp. 794-9
- Mc Carty, J.G.; Thorne, C.H.M.; Wood-Smith D. (1990). Principles of craniofacial surgery: Orbital hypertelorism. In: *Plastic Surgery*, J.G. Mc Carty, (Ed.), 2974-3012, WB Saunders Company, Philadelphia, U.S.A.

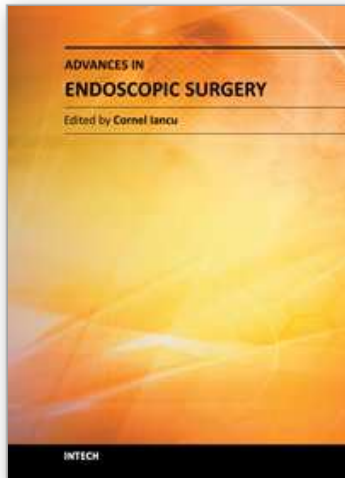
- Messerklinger, W. (1966). On the drainage of the human paranasal sinuses under normal and pathological conditions. 1. *Monatsschr Ohrenheilkd Laryngorhinol*, Vol.100, pp. 56-68
- Messerklinger, W. (1967). On the drainage of the human paranasal sinuses under normal and pathological conditions. 2. The frontal sinus and its evacuation system. *Monatsschr Ohrenheilkd Laryngorhinol*, Vol.101, pp. 313-26
- Messerklinger, W. (1978). *Endoscopy of the nose*. Urban and Schwarzenberg, Munchen, Germany
- Moriyama, H.; Hesaka, H.; Tachibana, T. & Honda, Y. (1992). Mucocoeles of ethmoid and sphenoid sinus with visual disturbance. *Arch Otolaryngol Head Neck Surg*, Vol.118, No.2, (February 1992), pp. 142-6
- Morris, W.M.; Losken, H.W. & le Roux P.A. (1989). Spheno-maxillary meningoencephalocele. A case report. *J Craniomaxillofac Surg* Vol.17, No.8, (November 1989), pp. 359-62
- Nachtigal, D.; Frenkiel, S.; Yoskovitch, A. & Mohr, G. (1999). Endoscopic repair of cerebrospinal fluid rhinorrhea: is it the treatment of choice? *J Otolaryngol*, Vol.28, No.3, (January 1999), pp. 129-33
- Naidich, T.P.; Altman N.R.; Braffman, B.H.; McLone, D.G. & Zimmerman, R.A. (1992). Cephaloceles and related malformations. *AJNR Am J Neuroradiol*, Vol.13, No2, (March-April 1992), pp. 655-90
- Nicolai, P.; Berlucchi, M.; Tomenzoli, D.; Cappiello, J.; Trimarchi, M.; Maroldi, R.; Battaglia, G. & Antonelli, A.R. (2003) Endoscopic surgery for juvenile angiofibroma: when and how. *Laryngoscope*, Vol.113, No.5, (May 2003), pp. 775-82
- Nicolai, P.; Lombardi, D.; Tomenzoli, D.; Villaret, A.B.; Piccioni, M.; Mensi, M. & Maroldi, R. (2009). Fungus ball of the paranasal sinuses: experience in 160 patients treated with endoscopy surgery. *Laryngoscope*, Vol.119, No.11, (November 2009), pp. 2275-9
- Nicolai, P.; Villaret, A.B.; Farina, D., Nadeau, S.; Yakirevitch, A.; Berlucchi, M. & Galtelli, C. (2010). Endoscopic surgery for juvenile angiofibroma: a critical review of indications after 46 cases. *Am J Rhinol Allergy* Vol.24, No.2, (March 2010), pp. e67-72
- Nicolai, P.; Castelnuovo, P. & Bolzoni Villaret A. (2011). Endoscopic resection of sinonasal malignancies. *Curr Oncol Rep* Vol.13, No.2, (April 2011), pp. 138-144
- Nicollas, R.; Facon, F.; Sudre-Levillain, I.; Forman, C.; Roman, S. & Triglia J.M. (2006). Pediatric paranasal sinus mucocoeles: etiologic factors, management, and outcome. *Int J Pediatr Otorhinolaryngol*, Vol.70, No.5, (May 2006), pp. 905-8
- Nuss, D.W. & Costantino P.D. (1995). Diagnosis and Management of Cerebrospinal Fluid Leaks. In: *Highlights of the Instructional Courses of the American Academy of Otolaryngology-Head and Neck Surgery*. F.E. Lucente, (Ed.), Volume 8, Mosby-Yearbook Publishers, St. Louis, U.S.A.
- Ohta, N.; Ito, T.; Sasaki, A. & Aoyagi, M. (2010). Endoscopic treatment of intranasal glioma in an infant presenting with dyspnea. *Auris Nasus Larynx*, Vol.37, No.3, (June 2010), pp. 373-6
- Olze, H.; Matthias, C. & Degenhardt, P. (2006), Paediatric paranasal sinus mucocoeles. *Eur J Pediatr Surg*, Vol.16, No.3, (June 2006), pp. 192-6.

- Ommaya, A.K. (1976). Spinal fluid fistulae. *Clin Neurosurg*, Vol. 23, (1976), pp. 363-92
- Orvidas, L.J.; Beatty, C.W. & Weaver, A.L. (2001). Antrochoanal polyps in children. *Am J Rhinol*, Vol.15, No.5, (September-October 2001), pp. 321-5
- Ozcan, C.; Apa, D.D. & Görür, K. (2004). Pediatric lobular capillary hemangioma of the nasal cavity. *Eur Arch Otorhinolaryngol*, Vol.261, No.8, (September 2004), pp. 449-51
- Ozdek, A.; Samim, E.; Bayiz, U.; Meral, I.; Safak, M.A. & Oguz, H. (2002). Antrochoanal polyps in children. *Int J Pediatr Otorhinolaryngol*, Vol.65, No.3, (September 2002), pp. 213-8
- Palfyn J. Anatomie chirurgicale. Paris, 1753.
- Pakkasjärvi, N.; Salminen, P.; Kalajoki-Helmiö, T.; Rintala, R. & Pitkäranta, A. (2008). Respiratory distress secondary to nasopharyngeal glial heterotopia. *Eur J Pediatr Surg*, Vol.18, No.2, (August 2008), pp. 117-8
- Pelikan, Z. (2009). Role of nasal allergy in chronic secretory otitis media. *Curr Allergy Asthma Rep*, Vol.9, No.2, (March 2009), pp. 107-13
- Pianta, L.; Pinelli, L.; Nicolai, P. & Maroldi, R. Cerebrospinal fluid leak, meningocele and meningoencephalocele. In: *Imaging in treatment planning for sinonasal diseases*, R. Maroldi & P. Nicolai, (Eds.), 93-106, Springer, Berlin, Germany
- Presutti, L.; Mattioli, F.; Villari, D.; Marchioni, D. & Alicandri-Ciufelli, M. (2009). Transnasal endoscopic treatment of cerebrospinal fluid leak: 17 years' experience. *Acta Otorhinolaryngol Ital*, Vol.29, No.4, (August 2009), pp. 191-6
- Pruna, X.; Ibanez, J.M.; Serres, X.; Garriga, V; Barber, I. & Vera, J. (2000) Antrochoanal polyps in children: CT findings and differential diagnosis. *Eur Radiol*, Vol.10, No.5, (2000), pp. 849-51
- Puppala, B.; Mangurten, H.H.; McFadden, J.; Lygizos, N.; Taxy, J. & Pelletiere, E. (1990). Nasal glioma presenting as neonatal respiratory distress. Definition of the tumor mass by MRI. *Clin Pediatr (Phil)*, Vol.29, No.1, (January 1990), pp. 49-52
- Puxeddu, R.; Berlucchi, M.; Ledda, G.P.; Parodo, G.; Farina, D. & Nicolai, P. (2006). Lobular capillary hemangioma of the nasal cavity: a retrospective study on 40 patients. *Am J Rhinol*, Vol.20, No.4, (July-August 2006), pp. 480-4
- Rahbar, R.; Resto, V.A.; Robson, C.D.; Perez-Atayde, A.R.; Goumnerova, L.C.; McGill, T.J. & Healy, G.B. (2003). Nasal glioma and encephalocele: diagnosis and management. *Laryngoscope*, Vol.113, No.12, (December 2003), pp. 2069-77
- Samadi, D.S.; Shah, U.K.; Handler, S.D. (2003). Choanal atresia: a twenty-year review of medical comorbidities and surgical outcomes. *Laryngoscope*, Vol.113, No.2, (February 2003), pp. 254-8.
- Samii, M. & Draf, W. (1989). Surgery of malformations of the anterior skull base. In: *Surgery of the Skull Base*, M. Samii & W. Draf (Eds), 114-26, Springer-Verlag, Berlin, Germany
- Schlosser, R.J. & Bolger, W.E. (2002). Nasal cerebrospinal fluid leaks. *J Otolaryngol*, Vol.31, Suppl.1, (August 2002), pp. S28-S37
- Schramm, V.L. Jr. & Effron, M.Z. (1980). Nasal polyps in children. *Laryngoscope*, Vol.90, No.9, (September 1980), pp. 1488-95
- Schweinfurth, J.M. (2002). Image guidance-assisted repair of bilateral choanal atresia. *Laryngoscope*, Vol.112, No.11, (November 2002), pp. 2096-8

- Senior, B.; Wirtschafter, A.; Mai, C.; Becker, C. & Belenky, W. (2000). Quantitative impact of pediatric sinus surgery on facial growth. *Laryngoscope*, Vol.110, No.11, (November 2000), pp. 1866-70
- Składzień, J.; Litwin, J.A.; Nowogrodzka-Zagórska, M. & Wierzchowski, W. (2001). Morphological and clinical characteristics of antrochoanal polyps: comparison with chronic inflammation-associated polyps of the maxillary sinus. *Auris Nasus Larynx*, Vol.28, No.2, (April 2001), pp. 137-41
- Som, P.M. & Brandwein, M. (1996). Sinonasal cavities. Inflammatory disease, tumors, fractures, and postoperative findings. In: *Head and Neck Imaging*, P.M. Som & H.D. Curtin, (Eds.), 3rd edition, 126-85, Mosby, St. Louis, U.S.A.
- Stammerger, H. (1999). 2. Surgical treatment of nasal polyps: past, present and future. *Allergy*, Vol.54, Suppl.53, (1999), pp. 7-11
- Suwanwela, C. & Suwanwela, N. (1972). A morphological classification of sincipital encephalomeningocele. *J Neurosurg*, Vol.36, No.2, (February 1972), pp. 201-11
- Teissier, N.; Kaguelidou, F.; Couloigner, V.; Francois, M. & Van Den Abbeele, T. (2008). Predictive factors for success after transnasal endoscopic treatment of coanal atresia. *Arch Otolaryngol Head Neck Surg*, Vol.134, No.1, (January 2008), pp. 57-61
- Thomé, D.C.; Voegels, R.L.; Cataldo de la Cortina, R.A. & Butugan, O. (2000). Bilateral ethmoidal mucocele in cystic fibrosis: report of a case. *Int J Pediatr Otorhinolaryngol*, Vol.55, No.2, (September 2000), pp. 143-8
- Triglia, J.M. & Nicollas, R. (1997). Nasal and sinus polyposis in children. *Laryngoscope*, Vol.107, No.7, (July 1997), pp. 963-6
- Tseng, C.C.; Ho, C.Y. & Kao, S.C. (2005). Ophthalmic manifestations of paranasal sinus mucocèles. *J Chin Med Assoc*, Vol.68, No.6, (June 2005), pp. 260-4.
- Uzunlar, A.K.; Osmay, U.; Yilmaz, F. & Topcu, U. (2001). Nasal glioma: report of two cases. *Turk J Med Sci*, Vol.31, pp. 87-90
- Van Peteghem, A. & Clement, P.A. (2006). Influence of extensive functional endoscopic sinus surgery (FESS) on facial growth in children with cystic fibrosis. Comparison of 10 cephalometric parameters of the midface for three study groups. *Int J Pediatr Otorhinolaryngol*, Vol.70, No.8, (August 2006), pp. 1407-13
- Varghese, L.; John, M. & Kurien, M. (2004). Bilateral asymmetric mucocèles of the paranasal sinuses: a first case report. *Ear Nose Throat J*, Vol.83, No.12, (December 2004), pp. 834-5
- Vatansever, U.; Duran, R.; Acunas, B.; Korten, M. & Adali, M.K. (2005). Bilateral choanal atresia in premature monozygotic twins. *J Perinatol*, Vol.25, No.12, (December 2005), pp. 800-2
- Vuckovic, N.; Vuckovic, D.; Dankuc, D. & Jovancevic, L. (2006). Nasal glioma. *Arch Oncol*, Vol.14, No.1-2, (June 2006), pp. 57-9
- Wolf, C.; Greistorfer, K. & Jebeles, J.A. (1995). The endoscopic endonasal surgical technique in the treatment of chronic recurring sinusitis in children. *Rhinology*, Vol.33, No.2, (June 1995), pp. 97-103
- Wong, R.K. & VanderVeen, D.K. (2008). Presentation and management of congenital dacryocystocele. *Pediatrics*, Vol.122, No.5, (November 2008), pp. e1108-12.

- Woodworth, B.A.; Schlosser, R.J.; Faust, R.A. & Bolger, W.E. (2004). Evolutions in the management of congenital intranasal skull base defects. *Arch Otolaryngol Head Neck Surg*, Vol.130, No.11, (November 2004), pp. 1283-88
- Yaman, H.; Yilmaz, S.; Karali, E.; Guclu, E. & Ozturk, O. (2010). Evaluation and management of antrochoanal polyps. *Clin Exp Otorhinolaryngol*, Vol.3, No.2, (June 2010), pp. 110-4
- Yerkes, S.A.; Thompson D.H. & Fisher, W.S. (1992). Spontaneous cerebrospinal fluid rhinorrhea. *Ear Nose Throat J*, Vol. 71, No.7, (July 1992), pp 318-20

IntechOpen



Advances in Endoscopic Surgery

Edited by Prof. Cornel Iancu

ISBN 978-953-307-717-8

Hard cover, 444 pages

Publisher InTech

Published online 25, November, 2011

Published in print edition November, 2011

Surgeons from various domains have become fascinated by endoscopy with its very low complications rates, high diagnostic yields and the possibility to perform a large variety of therapeutic procedures. Therefore during the last 30 years, the number and diversity of surgical endoscopic procedures has advanced with many new methods for both diagnoses and treatment, and these achievements are presented in this book. Contributing to the development of endoscopic surgery from all over the world, this is a modern, educational, and engrossing publication precisely presenting the most recent development in the field. New technologies are described in detail and all aspects of both standard and advanced endoscopic maneuvers applied in gastroenterology, urogynecology, otorhinolaryngology, pediatrics and neurology are presented. The intended audience for this book includes surgeons from various specialities, radiologists, internists, and subspecialists.

How to reference

In order to correctly reference this scholarly work, feel free to copy and paste the following:

Marco Berlucchi, Barbara Pedruzzi, Michele Sessa and Piero Nicolai (2011). Diagnostic and Therapeutic Sinonasal Endoscopy in Pediatric Patients, *Advances in Endoscopic Surgery*, Prof. Cornel Iancu (Ed.), ISBN: 978-953-307-717-8, InTech, Available from: <http://www.intechopen.com/books/advances-in-endoscopic-surgery/diagnostic-and-therapeutic-sinonasal-endoscopy-in-pediatric-patients>

INTECH
open science | open minds

InTech Europe

University Campus STeP Ri
Slavka Krautzeka 83/A
51000 Rijeka, Croatia
Phone: +385 (51) 770 447
Fax: +385 (51) 686 166
www.intechopen.com

InTech China

Unit 405, Office Block, Hotel Equatorial Shanghai
No.65, Yan An Road (West), Shanghai, 200040, China
中国上海市延安西路65号上海国际贵都大饭店办公楼405单元
Phone: +86-21-62489820
Fax: +86-21-62489821

© 2011 The Author(s). Licensee IntechOpen. This is an open access article distributed under the terms of the [Creative Commons Attribution 3.0 License](#), which permits unrestricted use, distribution, and reproduction in any medium, provided the original work is properly cited.

IntechOpen

IntechOpen