

We are IntechOpen, the world's leading publisher of Open Access books Built by scientists, for scientists

4,800

Open access books available

122,000

International authors and editors

135M

Downloads

Our authors are among the

154

Countries delivered to

TOP 1%

most cited scientists

12.2%

Contributors from top 500 universities



WEB OF SCIENCE™

Selection of our books indexed in the Book Citation Index
in Web of Science™ Core Collection (BKCI)

Interested in publishing with us?
Contact book.department@intechopen.com

Numbers displayed above are based on latest data collected.

For more information visit www.intechopen.com



Metastasis of Soft Tissue Sarcomas

Fethi Derbel et al.*

*Department of Surgery, University Hospital Sahloul, Sousse
Tunisia*

1. Introduction

Although soft-tissue sarcomas account for <1% of all malignancies, they represent a high percentage of cancer-related deaths worldwide [1]. These tumors may arise in virtually any anatomic site, but most originate in an extremity (59%), the trunk (19%), the retroperitoneum (15%), or the head and neck (9%) [2]. Currently, more than 50 histologic types of soft tissue sarcoma have been identified, but the most common are malignant fibrous histiocytoma (28%), leiomyosarcoma (12%), liposarcoma (15%), synovial sarcoma (10%), and malignant peripheral nerve sheath tumors (6%) [3]. Rhabdomyosarcoma is the most common soft tissue sarcoma of childhood.

2. The role of the pathology

As part of the evaluation by a specialist multidisciplinary team, accurate histological characterisation is essential before initiating treatment. The mainstay of diagnosis is histological interpretation±immunohistochemistry, although cytogenetic and molecular genetics investigations and, occasionally, electron microscopy are useful ancillary tools. Cytological analysis of fine-needle aspirates has a limited role in primary diagnosis, but can be used to confirm recurrent disease, or nodal metastases.

The histopathology report is an interpretation based on tumour morphology and immunoprofile in the available sampled tissue, and clinicopathological correlation is mandatory.

Diagnosis is most frequently made on needle core biopsy material, and tumour subtype and grade can be determined in about 80% of core biopsies [4], although pathologists experienced in examining soft tissue tumours have a diagnostic accuracy of 95-99% [4,5]. The amount of tissue can be a limitation, as the biopsy may not represent the entire, frequently heterogeneous tumour, or may miss the tumour. For this reason, correlation

* Sonia Ziadi¹, Medi Ben Hadj Hamida², Jaafar Mazhoud², Mohamed Ben Mabrouk², Abdallah Mtimet², Sabri Youssef², Ajmi Chaouch³, Ali Ben Ali², Ibtissam Hasni⁴, Mrad Dali Kaouthar⁴, Jemni Hela⁴, Moncef Mokni¹ and Ridha Ben Hadj Hamida²

¹Department of Pathology, University Hospital Farhat Hached, Sousse, Tunisia

²Department of Surgery, University Hospital Sahloul, Sousse, Tunisia

³Department of Anesthesiology and Intensive Care, University Hospital Sahloul, Sousse, Tunisia

⁴Department of Medical Imaging, University Hospital Sahloul Sousse, Tunisia

between the clinicoradiological features and the histopathology report is essential, and rebiopsy considered if there is any discrepancy.

The mitotic count, amount of necrosis and degree of cellular atypia can be underrepresented in biopsies, and a significant proportion of tumours are upgraded after subsequent resection.

The limitations of histology should be appreciated. There is notable morphological overlap between different groups of malignant tumours, with different clinical behaviours and therapeutic responses.

Some tumours are resected after neoadjuvant chemotherapy, or post-adjuvant chemotherapy or radiation. Post-treatment changes include stromal fibrosis and tumoral infarct, the latter difficult to distinguish from necrosis, making grading difficult. Radiation can cause reactive atypia of stromal fibroblasts, obscuring distinction between tumour and stromal tissue.

The clinical behavior of most soft tissue sarcomas is similar and, as defined by the staging system, is determined by the anatomic location (depth), grade, and size of the tumor. The histologic grade of a soft tissue sarcoma remains the most important prognostic factor.

The features that define the grade are the degree of cellularity, differentiation, pleomorphism, and necrosis as well as the number of mitoses. Certain tumors have an assigned grade based on the histologic diagnosis (eg, Grade 1 for well-differentiated liposarcomas; Grade 3 for rhabdomyosarcoma).

3. Metastasis of sarcomas

The current American Joint Committee on Cancer (AJCC) staging criteria for soft tissue sarcomas rely on the histologic grade, the tumor size and depth, and the presence of distant or nodal metastases [6]. In the 2002 AJCC staging system, four tumor grades are designated: well differentiated (G1), moderately differentiated (G2), poorly differentiated (G3), and undifferentiated (G4). In this four-tiered system, Grades 1 and 2 are considered low grade and Grades 3 and 4 are considered high grade [6]. Some recommend using other grading systems based on necrosis [7] or mitoses and necrosis [8].

The metastatic potentials for soft tissue sarcomas by grade are as follows: 5% to 10% for low-grade lesions, 25% to 30% for intermediate grade lesions, and 50% to 60% for high-grade tumors [9].

Superficial sarcomas are generally less aggressive than their deeper counterparts; for example, atypical fatty tumours in the subcutis do not metastasise or dedifferentiate and rarely recur, unlike similar intramuscular or retroperitoneal tumours [10].

The dominant pattern of metastasis is hematogenous. Lymph node metastasis of soft tissue sarcomas is rare; less than 5% show nodal spread. A few histologic subtypes, including rhabdomyosarcoma, epithelioid sarcoma, synovial sarcoma, angiosarcoma, clear cell sarcoma, and malignant fibrous histiocytoma, show a higher incidence of nodal involvement (10% to 20%) [11]. Alveolar rhabdomyosarcoma can present with widespread nodal as well as bone marrow metastases. Myxoid liposarcoma is known for metastasizing to other soft tissue sites [10].

Distant metastases occur most often to the lung. Of patients with extremity sarcoma, approximately 20% will have isolated pulmonary metastatic disease at some point in the course of their disease [12]. Although pulmonary metastases most commonly arise from

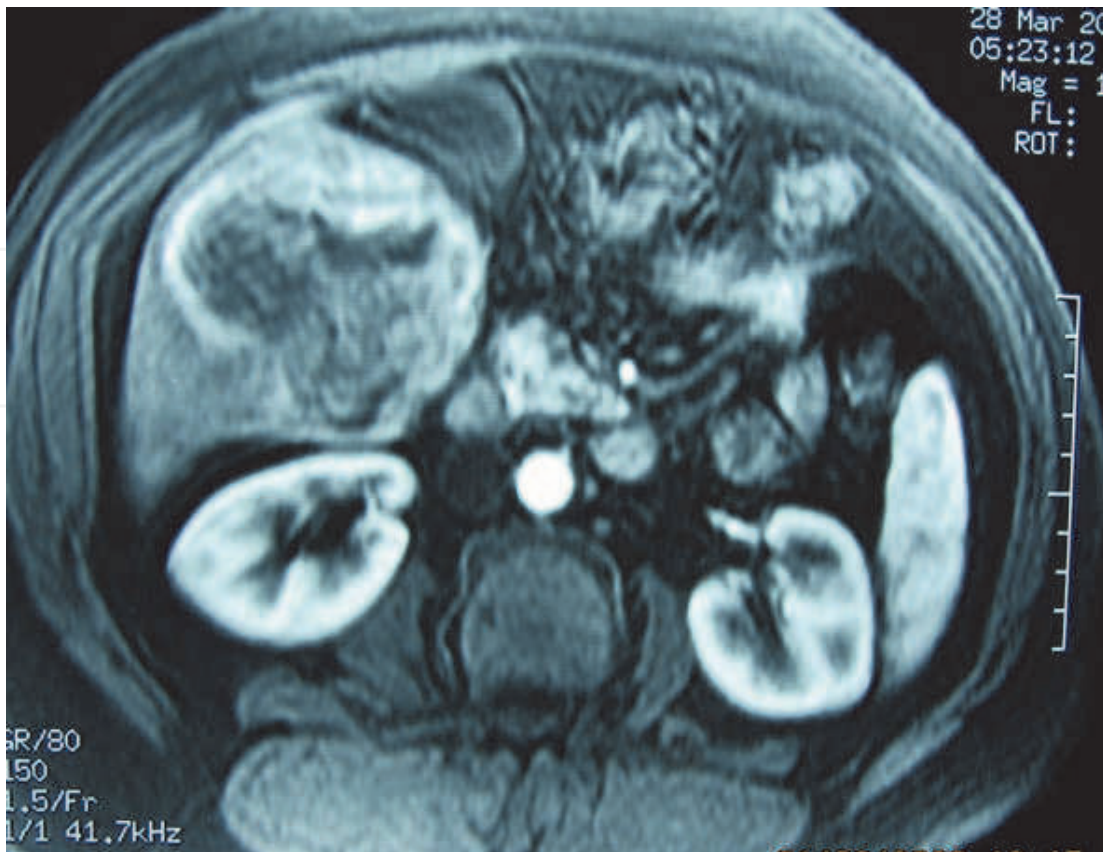


Fig. 1. Abdominal magnetic resonance imaging showing a 5-cm hepatic mass of segment V [26].

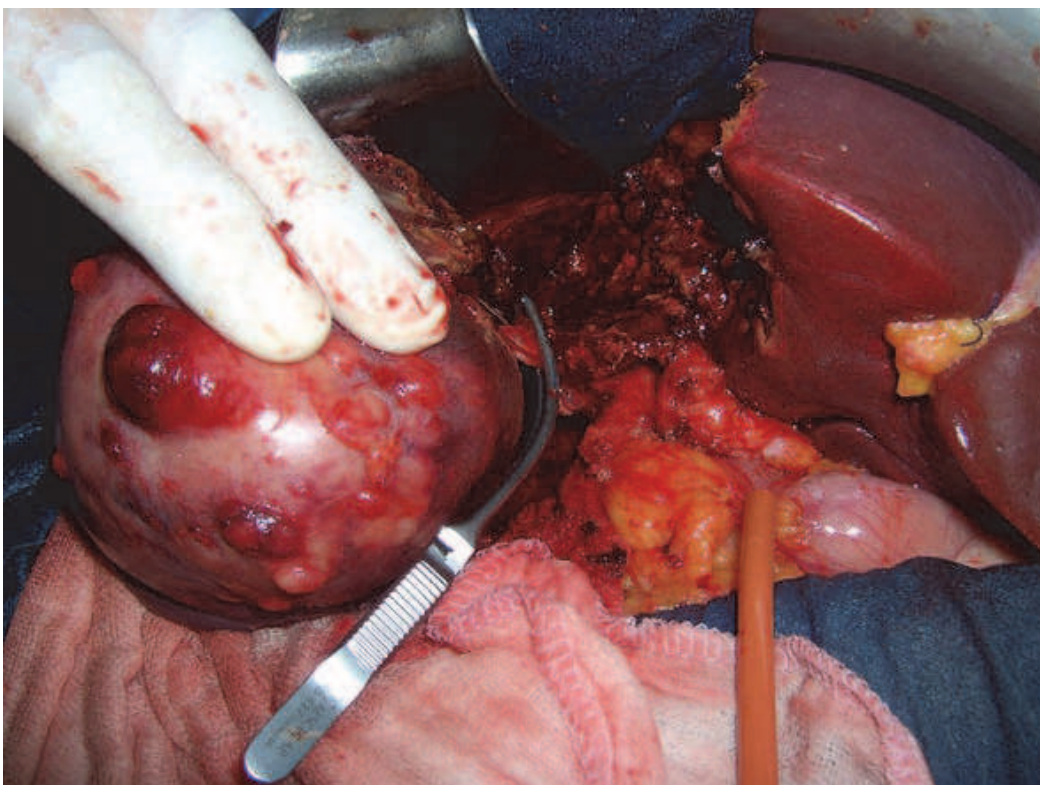


Fig. 2. Operative view showing a large firm mass in segments V and VI of the liver [26].

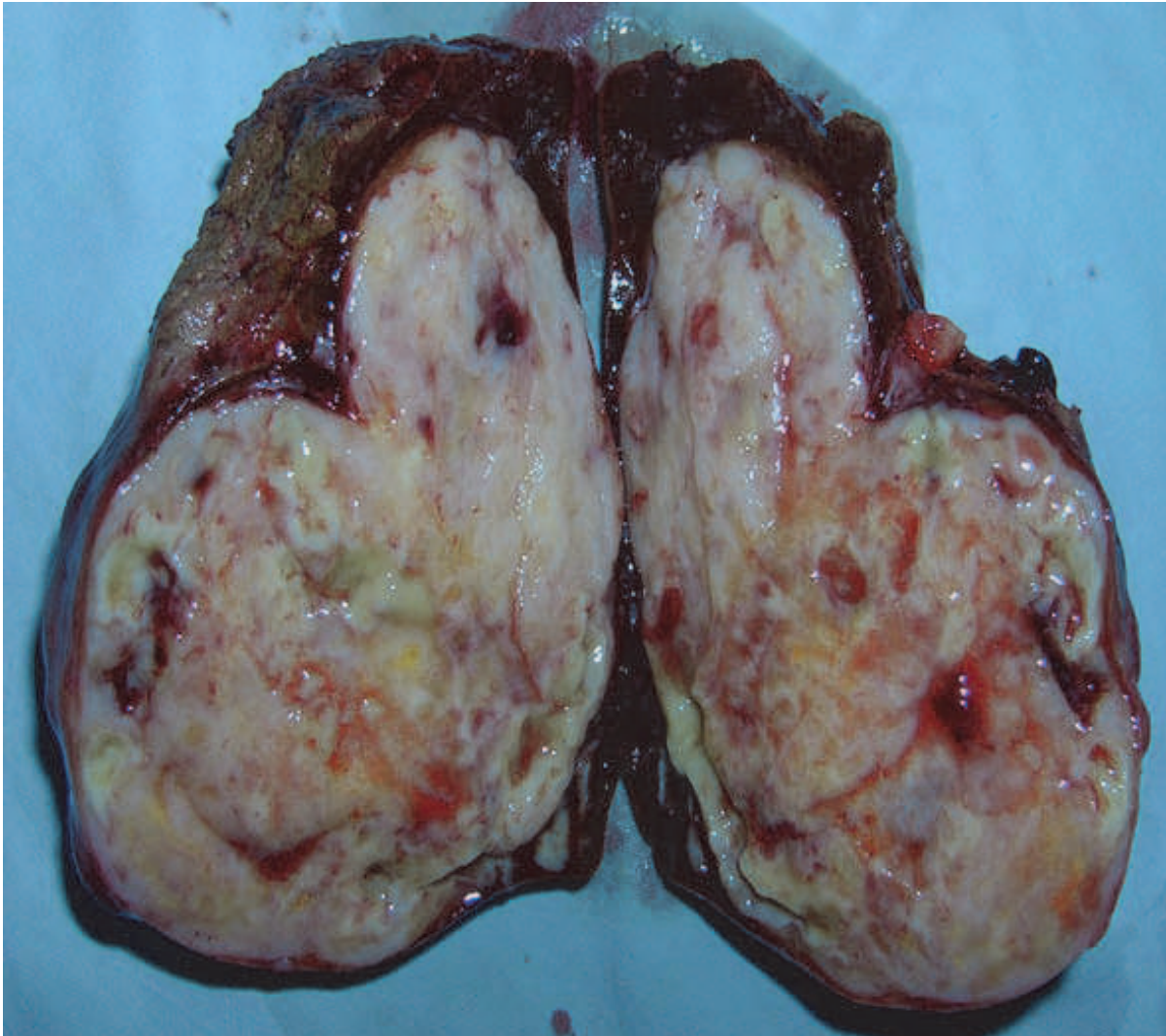


Fig. 3. Section in the mass in segments V and VI [26].

primary tumors in the extremities, they may arise from almost any histologic variant or primary site [13]. Extrapulmonary metastases usually appear after lung metastasis and represent disseminated disease [14]. Initial metastases to other sites such as the liver, brain, and soft tissue distant from the primary tumor are rare [15, 16]. In our study, we report one case of liver metastases of malignant fibrous histiocytoma [fig 1-4]. Pezzi et al. reported that most metastases of MFH occurred in the lungs (90%), followed by bone (8%). However, liver metastases of this tumour are very rare (1%) [24] [26].

Liposarcoma has a documented tendency for spread to distant extrapulmonary sites other than regional lymph nodes [17, 18, 19]. Cheng et al [17] reported on 60 patients with extremity liposarcoma, of which 22 developed metastases. Of these 22 liposarcoma patients, 13 had exclusively extrapulmonary disease on recurrence.

Distant soft tissue was the most common location of unusual initial spread reported by Cheng et al, including the brain and abdomen [17]. Many investigators have noted an increased prevalence of myxoid liposarcoma to exhibit unusual metastases compared to other subtypes of liposarcoma [19].

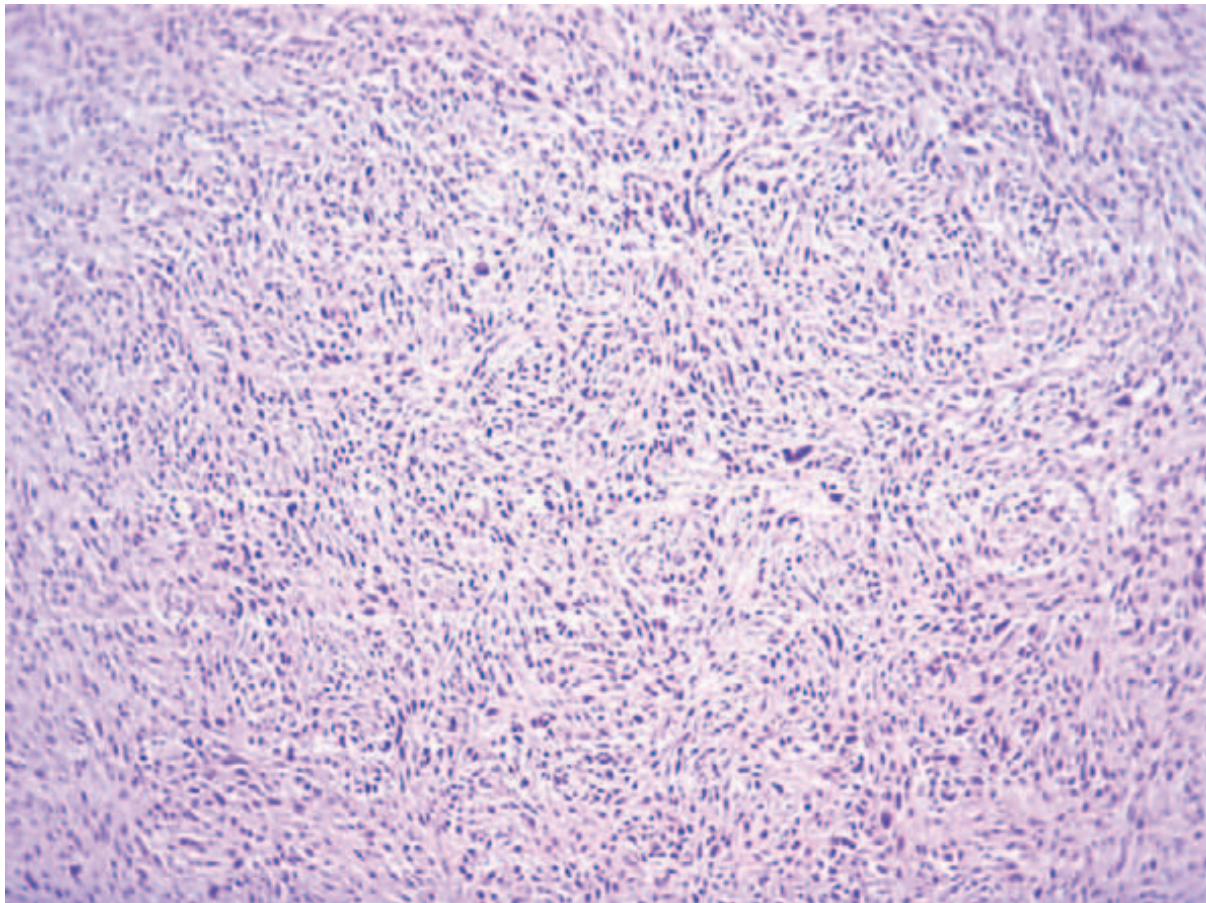


Fig. 4. Histological examination showing spindle-shaped and pleomorphic malignant cells intermingled with bizarre giant cells and inflammatory cells with a storiform pattern [26].

Other large series including all histologic types of high-grade sarcoma have reported unusual metastatic patterns. Potter et al found 15 distant extrapulmonary metastases in their series of 563 patients (2.7%) [20]. Vezeridis et al [21] also documented extrapulmonary distant metastases, but both of these studies were failing to demonstrate a consistent pattern in terms of anatomic location of the initial unusual metastatic site.

In our experience, over a period of 10 years (1998-2007), 13,737 cases of cancer are registered in the central region of Tunisia. 357 (2.6%) cases are soft tissue sarcomas, and 40 (11.2%) of them were diagnosed with metastatic disease.

Histological types who give most metastases are synovial sarcoma, stromal tumor and undifferentiated sarcoma (Table No. I). The lung was the most common site of metastatic sarcomas.

Postulating that soft-tissue sarcomas metastasize via the venous system may account for the predominance of distant recurrence in the lungs. The mechanism of extrapulmonary metastasis is less clear. In 1946, Tedeschi [22] proposed the concept of pluricentric anlage, referring to systemically altered lipid metabolism causing stimulation of undifferentiated mesenchymal cells to explain patients he observed with fatty tumors in multiple soft-tissue locations. While this concept has been used to explain the development of multiple subcutaneous nodules in patients with neurofibromatosis, it seems to be a less robust explanation for the usual clinical course of sarcoma [23]. The mechanism of unusual distant metastasis remains obscure.

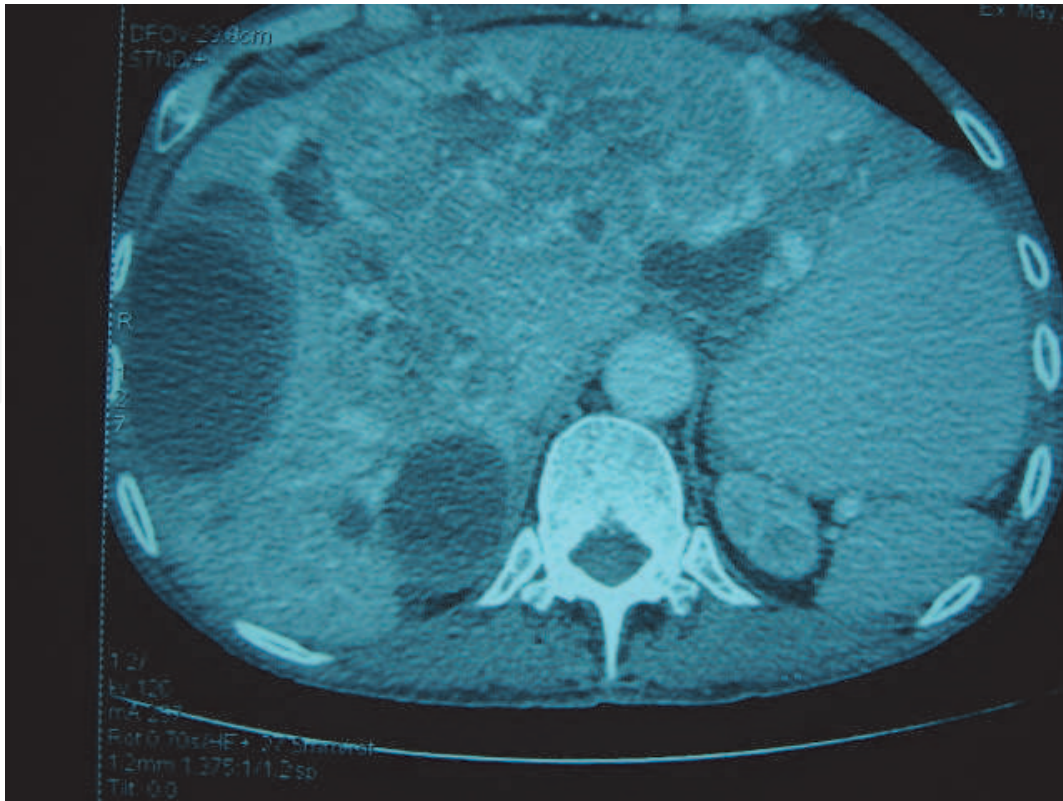


Fig. 5. Abdominal CT scan showing multiple cystic metastasis of a GIST with intracystic enhancing nodules

Histologic type	All of cases	Sarcomas Stage IV	Metastatic site
Undifferentiated sarcoma	82	11 (13,41%)	Lung (6), liver (5), bone (1), lymph node (1)
stromal tumor (GIST)	33	7 (21.21%)	liver (6), peritonium (1)
Synovialosarcoma	21	6 (28.57%)	Lung (6), bone (2)
Leiomyosarcoma	26	5 (19.23%)	Lung (6), bone (2), lymph node (1)
Ewing sarcoma	7	3 (42.85%)	Lung (3), brain (1)
Rhabdomyosarcoma	23	3 (13%)	Lung (1), peritonium (2)
Malignant fibrous histiocyoma	25	2 (8%)	peritonium (1), lymph node (1)
Desmoplastic Intrabdominal round cell tumor	8	2 (25%)	Rectum (1), bladder (1)
Fibrosarcoma	14	1 (7.14%)	Liver (1)
Other sarcomas	118	0	
Total	357	40 (11.2%)	

Table 1. Histological type of sarcoma stage IV and metastatic sites (1998-2007: The Central region of Tunisia)

Liver metastasis of GIST are frequent. It mainly occurs after incomplete resection of the primitive lesion. Surgical resection is the preferred treatment, but there is a high rate of recurrence. Imatinib is the treatment of choice for these cases. With effective treatment, GIST becomes entirely cystic. Upon reactivation, the cysts develop intracystic enhancing nodules [25]

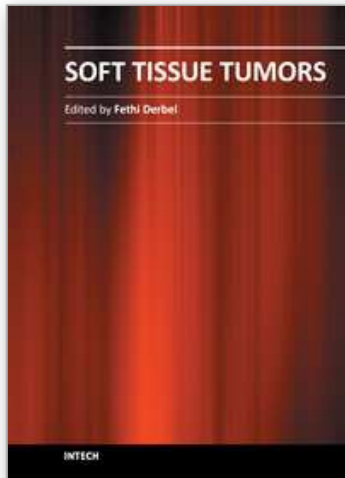
We report a case of liver metastasis of GIST that occurred three years after the incomplete resection of the intestinal tumor treated with Imatinib. The CT scan showed the development of intracystic enhancing nodules within Six months of Imatinib.

4. References

- [1] Rosenthal TC, Kraybill W. Soft tissue sarcomas: integrating primary care recognition with tertiary care center treatment. *Am Fam Physician*. 1999; 60(2):567-572.
- [2] DeVita VT Jr, Hellman S, Rosenberg SA, eds. *Cancer: Principles and Practice of Oncology*. 6th ed. Philadelphia, PA: Lippincott Williams & Wilkins, 2001:1841-1891.
- [3] Coindre JM, Terrier P, Guillou L, et al. Predictive value of grade for metastasis development in the main histologic types of adult soft tissue sarcomas: a study of 1240 patients from the French Federation of Cancer Centers Sarcoma Group. *Cancer* 2001;91:1914-1926.
- [4] Hoerber I, Spillane AJ, Fisher C, Thomas JM. Accuracy of biopsy techniques for limb and limb girdle soft tissue tumors. *Ann Surg Oncol* 2001;8:80e87.
- [5] Heslin MJ, Lewis JJ, Woodruff JM, Brennan MF. Core needle biopsy for diagnosis of extremity soft tissue sarcoma. *Ann Surg Oncol* 1997;4:425e431.
- [6] Greene FL, Page DL, Fleming FD, et al. (eds). *American Joint Committee on Cancer: Cancer Staging Manual*. 6th ed. New York, NY: Springer; 2002:221-226.
- [7] Costa J, Wesley RA, Glatstein E, Rosenberg SA. The grading of soft tissue sarcomas. Results of a clinicohistopathologic correlation in a series of 163 cases. *Cancer* 1984;53:530-541.
- [8] Guillou L, Coindre JM, Bonichon F, et al. Comparative study of the National Cancer Institute and French Federation of Cancer Centers Sarcoma Group grading systems in a population of 410 adult patients with soft tissue sarcoma. *J Clin Oncol* 1997;15:350-362.
- [9] Coindre JM, Terrier P, Bui NB, et al. Prognostic factors in adult patients with locally controlled soft tissue sarcoma. A study of 546 patients from the French Federation of Cancer Centers Sarcoma Group. *J Clin Oncol* 1996;14:869-877.
- [10] Thway K. Pathology of soft tissue sarcomas. *Clin Oncol (R Coll Radiol)*. 2009 Nov;21(9):695-705. Epub 2009 Sep 6.
- [11] Fong Y, Coit DG, Woodruff JM, Brennan MF. Lymph node metastasis from soft tissue sarcoma in adults. Analysis of data from a prospective database of 1772 sarcoma patients. *Ann Surg* 1993;217:72-77.
- [12] Gadd MA, Casper ES, Woodruff JM, et al. Development and treatment of pulmonary metastases in adult patients with extremity soft tissue sarcoma. *Ann Surg* 1993; 218(6):705-712.
- [13] Lewis JJ, Brennan MF. Soft tissue sarcomas. *Curr Probl Surg* 1996; 33(10):817- 872.
- [14] Lewis JJ, Brennan MF. Soft tissue sarcomas. *Curr Probl Surg*. 1996; 33(10):817-872.

- [15] Potter DA, Glenn J, Kinsella T, et al. Patterns of recurrence in patients with high-grade soft-tissue sarcomas. *J Clin Oncol*. 1985; 3(3):353-366.
- [16] Fong Y, Coit DG, Woodruff JM, Brennan MF. Lymph node metastasis from soft tissue sarcoma in adults: analysis of data from a prospective database of 1772 sarcoma patients. *Ann Surg*. 1993; 217(1):72-77.
- [17] Cheng EY, Springfield DS, Mankin HJ. Frequent incidence of extrapulmonary sites of initial metastasis in patients with liposarcoma. *Cancer*. 1995; 75(5):1120-1127.
- [18] Pearlstone DB, Pisters PW, Bold RJ, et al. Patterns of recurrence in extremity liposarcoma: implications for staging and follow-up. *Cancer*. 1999; 85(1):85-92.
- [19] Vassilopoulos PP, Voros DN, Kelessis NG, Katsilieris JN, Apostolikas NG. Unusual spread of liposarcoma. *Anticancer Res*. 2001; 21(2B):1419-1422.
- [20] Potter DA, Glenn J, Kinsella T, et al. Patterns of recurrence in patients with high-grade soft-tissue sarcomas. *J Clin Oncol*. 1985; 3(3):353-366.
- [21] Vezeridis MP, Moore R, Karakousis CP. Metastatic patterns in soft tissue sarcomas. *Arch Surg*. 1983. 118(8):915-918.
- [22] Tedeschi CG. Systemic multicentric lipoblastosis. *Arch Pathol*. 1946; 42:320-337.
- [23] Enzinger FM, Winslow DJ. Liposarcoma: a study of 103 cases. *Virchows Arch Pathol Anat Physiol Klin Med*. 1962; 335:367-388.
- [24] Pezzi CM, Rawlings Jr MS, Esgro JJ, et al. Prognostic factors in 227 patients with malignant fibrous histiocytoma. *Cancer* 1992;69(8):2098-103
- [25] Burkill G, et al. Malignant Gastrointestinal Stromal Tumor: Distribution, Imaging Features, and Pattern of Metastatic Spread. *Radiology* 2003; 226: 527-532.
- [26] Fethi Derbel, Hassene Hajji, Abdallah Mtimet, Mehdi Ben Hadj Hamida, Jaafar Mazhoud, Sabri Youssef, Ali Ben Ali, Habib Khochtali, Ajmi Chaoucha, Moncef Mokni, Hela Jemni, Ridha Ben Hadj Hamida. Liver metastasis of malignant fibrous histiocytoma: A case report *Arab Journal of Gastroenterology* June 2010 (Vol. 11, Issue 2, Pages 113-115)

IntechOpen



Soft Tissue Tumors

Edited by Prof. Fethi Derbel

ISBN 978-953-307-862-5

Hard cover, 270 pages

Publisher InTech

Published online 16, November, 2011

Published in print edition November, 2011

Soft tissue tumors include a heterogeneous group of diagnostic entities, most of them benign in nature and behavior. Malignant entities, soft tissue sarcomas, are rare tumors that account for 1% of all malignancies. These are predominantly tumors of adults, but 15% arise in children and adolescents. The wide biological diversity of soft tissue tumors, combined with their high incidence and potential morbidity and mortality represent challenges to contemporary researches, both at the level of basic and clinical science. Determining whether a soft tissue mass is benign or malignant is vital for appropriate management. This book is the result of collaboration between several authors, experts in their fields; they succeeded in translating the complexity of soft tissue tumors and the diversity in the diagnosis and management of these tumors.

How to reference

In order to correctly reference this scholarly work, feel free to copy and paste the following:

Fethi Derbel, Sonia Ziadi, Medi Ben Hadj Hamida, Jaafar Mazhoud, Mohamed Ben Mabrouk, Abdallah Mtimet, Sabri Youssef, Ajmi Chaouch, Ali Ben Ali, Ibtissam Hasni, Mrad Dali Kaouthar, Jemni Hela, Moncef Mokni and Ridha Ben Hadj Hamida (2011). Metastasis of Soft Tissue Sarcomas, *Soft Tissue Tumors*, Prof. Fethi Derbel (Ed.), ISBN: 978-953-307-862-5, InTech, Available from: <http://www.intechopen.com/books/soft-tissue-tumors/metastasis-of-soft-tissue-sarcomas>

INTECH
open science | open minds

InTech Europe

University Campus STeP Ri
Slavka Krautzeka 83/A
51000 Rijeka, Croatia
Phone: +385 (51) 770 447
Fax: +385 (51) 686 166
www.intechopen.com

InTech China

Unit 405, Office Block, Hotel Equatorial Shanghai
No.65, Yan An Road (West), Shanghai, 200040, China
中国上海市延安西路65号上海国际贵都大饭店办公楼405单元
Phone: +86-21-62489820
Fax: +86-21-62489821

© 2011 The Author(s). Licensee IntechOpen. This is an open access article distributed under the terms of the [Creative Commons Attribution 3.0 License](#), which permits unrestricted use, distribution, and reproduction in any medium, provided the original work is properly cited.

IntechOpen

IntechOpen