

# We are IntechOpen, the world's leading publisher of Open Access books Built by scientists, for scientists

4,800

Open access books available

122,000

International authors and editors

135M

Downloads

Our authors are among the

154

Countries delivered to

TOP 1%

most cited scientists

12.2%

Contributors from top 500 universities



WEB OF SCIENCE™

Selection of our books indexed in the Book Citation Index  
in Web of Science™ Core Collection (BKCI)

Interested in publishing with us?  
Contact [book.department@intechopen.com](mailto:book.department@intechopen.com)

Numbers displayed above are based on latest data collected.  
For more information visit [www.intechopen.com](http://www.intechopen.com)



# Histological Biomarker as Diagnostic Tool for Evaluating the Environmental Quality of Guajará Bay – PA - Brazil

Caroline da Silva Montes,  
José Souto Rosa Filho and Rossineide Martins Rocha  
*Universidade Federal do Pará,  
Brazil*

## 1. Introduction

It has been reported that in recent decades the level of foreign compounds known as xenobiotics in aquatic ecosystems has increased alarmingly as a result of domestic, industrial and agricultural effluents. In the 20th century, many thousands of organic trace pollutants, such as polychlorinated biphenyls (PCBs), organochlorine pesticides (OCPs), polycyclic aromatic hydrocarbons (PAHs), and dioxin - p - dioxins (PCDDs) have been produced and in part, released into the environment (van der Oost et al., 2003). This has led to substantial reduction in environmental quality, adding to the deterioration of human health and living organisms that depend on these ecosystems (Cajaraville et al., 2000). However, the presence of a foreign compound in a segment of an aquatic ecosystem does not, by itself, indicate injurious effects. Connections must be established between external levels of exposure, internal levels of tissue contamination and early adverse effects and determining the extent and severity of such contamination only by the results of water chemical analysis is insufficient and often overestimates the proportion and duration of exposure to the toxic agent (van der Oost et al., 2003 & Giari et al., 2008). Thus, studies using biomarkers are essential to complement such environmental monitoring, given that in order to control pollution effects of effluents on the animals that inhabit the water bodies must be understood (Martinez & Colus, 2002; Camargo & Martinez, 2006). Biomarkers are defined as responses to any exposure evidenced in histological, physiological, biochemistry, genetic and behavioral modification (Leonzio & Fossi, 1993). More recent, van der Oost et al. 2003 defined biomark as a biological indicator from an exposure to a stressor responding in various ways such a response can be seen and adaptation as a defense. Some authors note that biomarkers are used as a warning sign to emerging environmental problems (Au, 2004). In this type of environmental assessment, the health of an ecosystem can be measured by the health of its individual components (Hugget et al., 1992). It is essential to this study, as there is a variety of responses that can be used as tools to assess the health of animals exposed to certain chemicals, to provide information on spatial and temporal changes in pollutant concentrations and indicate the occurrence of environmental quality or adverse ecological consequences (Kammenga et al., 2000). In Brazil there are few studies about impact of

contaminants on tropical ecosystems, therefore tropical ecotoxicology needs further studies on the effect of pollution on native aquatic organisms (Monserrat et al., 2007). The biological communities of Amazonian aquatic environments are poorly known, despite its economic and ecological importance. Belém and its surrounding areas are part of the Amazon estuary in northern Brazil. The Combú Island, near Belém, is included on Combú Environmental Protection Area (Law 6.083 of 11.13.1997) and corresponds to a lowland environment region, according to the daily tidal flooding, especially during the lunar cycles and rainy season (Ribeiro, 2004). The island's population depends on aquatic resources (fish and shrimp) as a source of food and income, and poses an imminent threat to the conservation of natural resources. The species *Plagioscion squamosissimus*, *Hypophthalmus marginatus* and *Lithodoras dorsalis* are economically important to the Amazon region, since in some areas this represents the main protein source for families. These animals occur in different types of environments, suggesting they are tolerant of a wide range of physico-chemical variables (de La Torre et al., 2005). Thus, they are suitable for environmental monitoring. The objective of this study was to evaluate the histological alterations in gills and liver of the species *P. squamosissimus*, *H. marginatus* and *L. dorsalis*, as well as assess the environmental influence on fish health from Amazon estuary, Guajará bay.

## 2. Material and methods

### 2.1 Study area

The study area is situated around the island of Combú, near Belém-PA-Brazil, located between the coordinates 01 ° 25 'S and 48 ° 25' W. This island is inserted in the Area of Environmental Protection Combú (Law 6.083 of 11.13.1997). This area undergoes severe impacts that modify water quality due to increased population and its proximity to the metropolitan area of Belém-PA-Brazil. A total of ninety-one (91) specimens were captured in Guajará Bay and Guamá river during the dry period (July 2009). Samples were collected in three areas (Figure 1): Area A - away from pollution sources; Area B and C - considered impacted by the presence of domestic sewage and urban influence.

### 2.2 Biotic and abiotics data

During the study the physicochemical variables such as: pH, temperature, Dissolved oxygen (DO), nitrite, nitrate and phosphate were obtained. The pH and temperature were measured *in situ* using an Orion pH-meter, model 210 and a Mercury thermometer. To determine the other variables, water samples were collected at the surface layer using a Van Dorn-type bottle. They were later processed (filtered and cooled) and taken to laboratory for analysis. We used three fish species of interest to the local population, *P. squamosissimus*, *L. dorsalis* and *H. marginatus*. These were caught by artisanal fishing, using gill nets with different mesh sizes (25 mm, 40 mm and 50 mm). After captured, the fish were placed in plastic bags, appropriately refrigerated in isothermal boxes and transported to the laboratory. The fish were then examined internally and externally for gross lesions, removing a fragment of the gills and liver. The tissue samples were fixed in Bouin's solution. After fixation, the tissues were dehydrated in increasing concentrations of alcohol, cleared in xylene and embedded in paraffin, obtained from 5mm thick sections and stained with HE (hematoxylin and eosin solution). The sections were examined and photographed using Carl Zeiss optical microscope (Axiostar Plus1169-151).

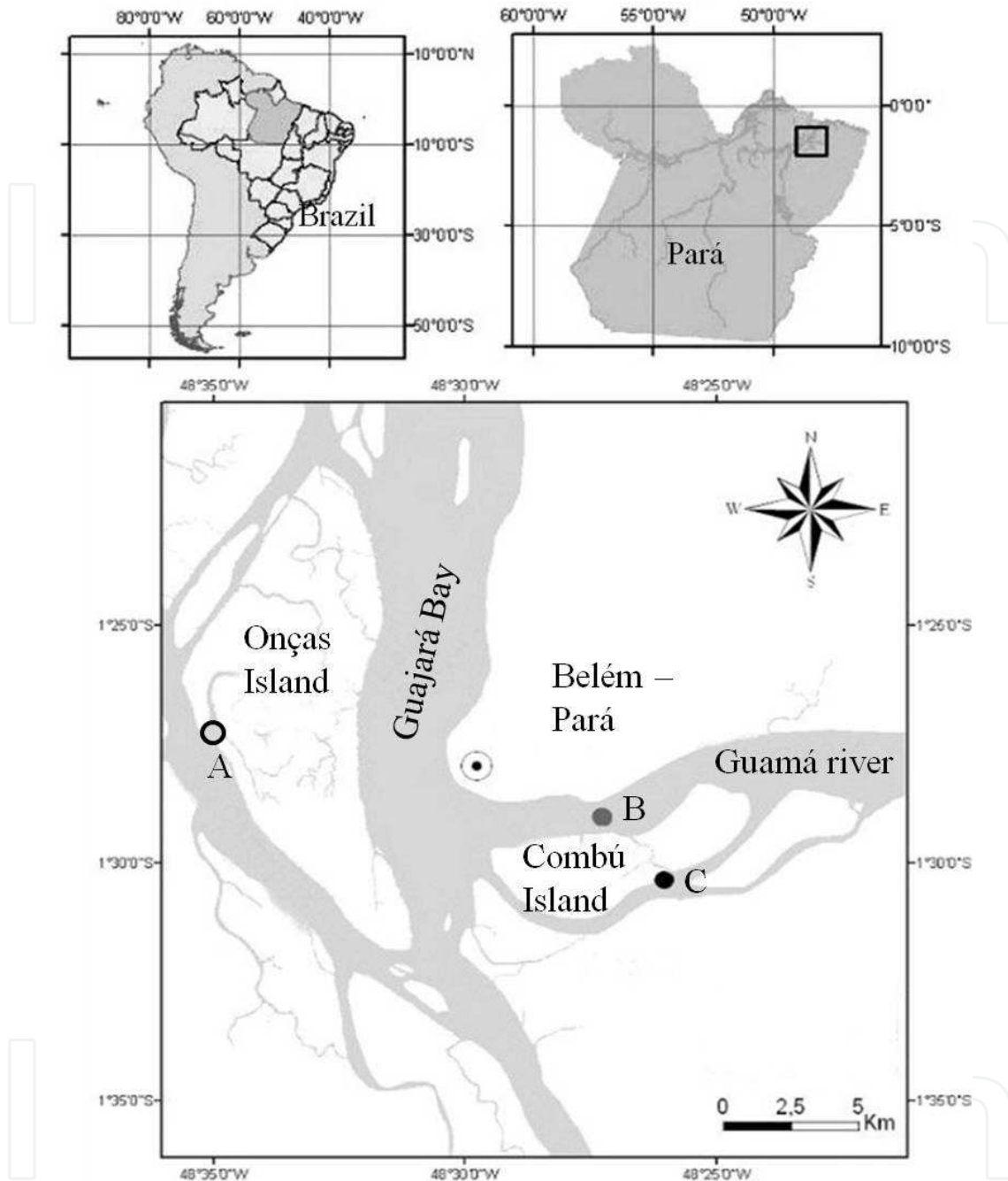


Fig. 1. Map of study area and collection points. A (away from sources pollution); B and C (impacted).

### 2.3 Diagnostic histopathology

The histopathological changes were evaluated semi-quantitatively in two ways: The first one was modified according to Schwaiger et al. (1997), which assigned a numerical value to each animal according a degree of change: 1 (initial stage of change in some points with a chance of recovery), 2 (occasional occurrence of localized lesions with little chance of recovery) and 3 (widely distributed lesions in the body without chance of recovery). The second one was adapted from Poleksic & Mitrovic - Tutundzic (1994) that examines the

calculation of the histopathological alteration index (HAI). For this, the changes were classified as progressive stages for the deterioration of organ functions: I (do not compromise the functioning of the organ) II (severe, affecting normal body functions) and III (very severe and irreversible) table 1. A value of HAI was calculated for each animal using the formula.

$$\text{HAI} = 10^0 \sum I + 10^1 \sum II + 10^2 \sum III \quad (1)$$

Since I, II, III correspond to the number of stages of change, the mean HAI was divided into five categories: 0-10 = normal tissue; 10-30 = mild to moderate damage to the tissue, 31-60 = moderate to severe damage to the tissue, 61-100 = severe damage to the tissue, greater than 100 = irreparable damage to the tissue.

GILL/LIVER HISTOPATHOLOGY	STAGE
<b>1. Hypertrophy and hyperplasia of gill epithelium</b>	
Hypertrophy of respiratory epithelium	I
Lifting of respiratory epithelium	I
lamellar epithelial hyperplasia	I
lamellar disarray	I
Incomplete fusion of some lamellae	I
Complete fusion of all lamellae	II
Lamellar epithelium disruption	II
Uncontrolled proliferation of tissue	III
<b>2. Changes in blood vessels</b>	
Dilation of sinus blood	I
Constriction of sinus blood	I
Vascular congestion	II
Disruption of pillars cells	II
Lamellar aneurism	III
<b>1. Changes in hepatocytes</b>	
cell hypertrophy	I
cell atrophy	I
Melanomacrophage centers	II - III
Inflammation	II
Fatty degeneration	II
Necrosis	II - III
<b>2. Changes in blood vessels</b>	
Hepatitis	II
Vascular congestion	II

Table 1. Classification of histopathological changes of gill and liver in relation to the type, location and stage of lesions in which they operate. Modified Poleksić and Mitrović - Tutundžić (1994).

## 2.4 Statistical analysis

The frequency of altered animals and the mean HAI for each fish caught at each site were calculated. The occurrence of histopathological lesions and HAI were compared between

areas using the nonparametric Kruskal-Wallis tests. The differences were considered significant  $p < 0.05$ .

### 3. Results

Table 2. corresponds the total number of animals captured in the different study areas (A, B and C). The results of physico-chemical variables during the study are analyzed in Table 3. The temperature values observed are within the normal range for the tropics. Regarding pH, it was observed that this was slightly acid in areas B and C, while the DO was lower than what is recommended in all areas. The results of gill and liver changes are displayed in Tables 4 and 5 and Figures 2 - 8. The gills of the specimens were normal as described for teleosts, consisting of four arches, supported by partially calcified cartilaginous tissue, each gill arch has two rows of primary lamellae, which in turn support the secondary lamellae. The branchial lamellar epithelium is a mosaic of primary pavement cells, mucus-secreting cells and chloride cells. The chloride cells were less evident in light microscopy because of the color used. The secondary lamella formed by the epithelium has a single layer of pavement cells, supported by the basement membrane lining the pillar cells, which surround the space through which blood circulates (Figure 5). The liver tissue of teleost fish is composed of two lobes, the right lobe which is adjacent to the gallbladder and the left lobe near the spleen. The liver is composed of hepatocytes, epithelial cells of the bile ducts, macrophages, blood cells and endothelial cells. The hepatocytes are polyhedral cells with one or two large, spherical and centrally nuclei located with evident nucleolus, and granular cytoplasm and vacuolated appearance (Figure 7). Changes in these organizations were considered to be alterations. Several changes were observed in gill and liver that differed significantly from the animals caught in the impacted areas (B and C). The area A was the only one which had healthy animals, and fish with soft lesions of type I and II and no animals with severe lesions of type III (Table 4). It was also found that they had the lowest histopathological changes index (HAI) in the 0 to 10 range (Table 5). Unlike the fish collected in areas B and C, where they all had some kind of change, many were classified as degree 3 lesions, showing the most severe type III and the highest values of HAI ranging from 41 to 91, considered moderate to severe damage, such as lamellar aneurysm characterized by blood leakage inside the lamellae, causing disruption of pillar cells and consequent dilation of blood vessels; lifting epithelium which is the detachment of the lamellar epithelium; lamellar fusion, characterized by an increase in the number chloride cells between the secondary lamellae in the respiratory tract causing reduction in the gills (Figure 6). In liver were evident such diseases: cellular hypertrophy, necrosis, presence of centers of melanomacrophages, hepatitis and inflammation (Figure 8). Regarding the responses of different species, it was observed that the species *H. marginatus* showed the lowest values while the HAI *P. squamosissimus* presented the highest values. *L.dorsalis* and *P. squamosissimus* showed more type III lesions and were therefore classified as degree 3 (Figure 4-6).

Species	Number of fish caught		
	A	B	C
<i>H. marginatus</i>	10	6	10
<i>L. dorsalis</i>	14	15	9
<i>P. squamosissimus</i>	14	8	5

Table 2. Number of fish caught in different areas (A, B e C).

Variables	A	B	C	Recommended
T (°)	30	30	31	-
pH	6.1	5.8	5.9	6.0 - 9.0
DO (mg/L)	4	4.2	4.5	> 5 (mg/L)
Phosphate (mg/L)	0.01	0.01	0	0.01
Nitrite (mg/L)	0.001	0.001	0.001	0.001
Nitrate (mg/L)	1.3	1.2	1	>1

Table 3. Physico-chemical variables observed in different study areas and the value recommended.

species	Types	Gill			Liver		
		A	B	C	A	B	C
<i>H. marginatus</i>	I	12	17	29	12	18	24
	II	3 <sup>a, b</sup>	11	13	3 <sup>a</sup>	12	9
	III	-	2	4	-	2	3
<i>L. dorsalis</i>	I	13 <sup>a</sup>	49	33	13 <sup>a</sup>	47	27
	II	5 <sup>a, b</sup>	23	20	5 <sup>a, b</sup>	27	14
	III	-	7	4	-	7	4
<i>P. squamosissimus</i>	I	4 <sup>a, b</sup>	26	14	13	28	16
	II	1 <sup>a, b</sup>	15	10	5 <sup>a</sup>	20	11
	III	-	5	3	-	5	3

Table 4. Total number of different types of histopathological lesions in gill and liver from three fish species in study areas.

Note: Significant difference ( $p < 0,05$ ): <sup>a</sup> between A and B ; <sup>b</sup> between A and C.

Species	Gill			Liver		
	A	B	C	A	B	C
<i>H. marginatus</i>	4.2 ± <sup>a, b</sup>	54.5 ±	55.9 ±	4.2 ± <sup>a, b</sup>	56.33 ±	41.4 ±
	0.3	9.6	8.3	1.3	8.7	5.5
<i>L. dorsalis</i>	4.5 ± <sup>a, b</sup>	65.27 ±	70.33 ±	3.94 ± <sup>a, b</sup>	67.8 ±	63 ±
	2.1	7.8	10.6	2.1	14.4	6.5
<i>P. squamosissimus</i>	1 ± <sup>a, b</sup>	84.5 ±	82.8 ±	4.2 ± <sup>a, b</sup>	91 ±	85.2 ±
	1.1	16.5	15.7	0.5	19.9	24.5

Table 5. Mean and standard deviation of HAI calculated from histological alterations in gill and liver tissue from three fish species in study areas.

Note: Significant difference ( $p < 0,05$ ): <sup>a</sup> between A and B ; <sup>b</sup> between A and C.

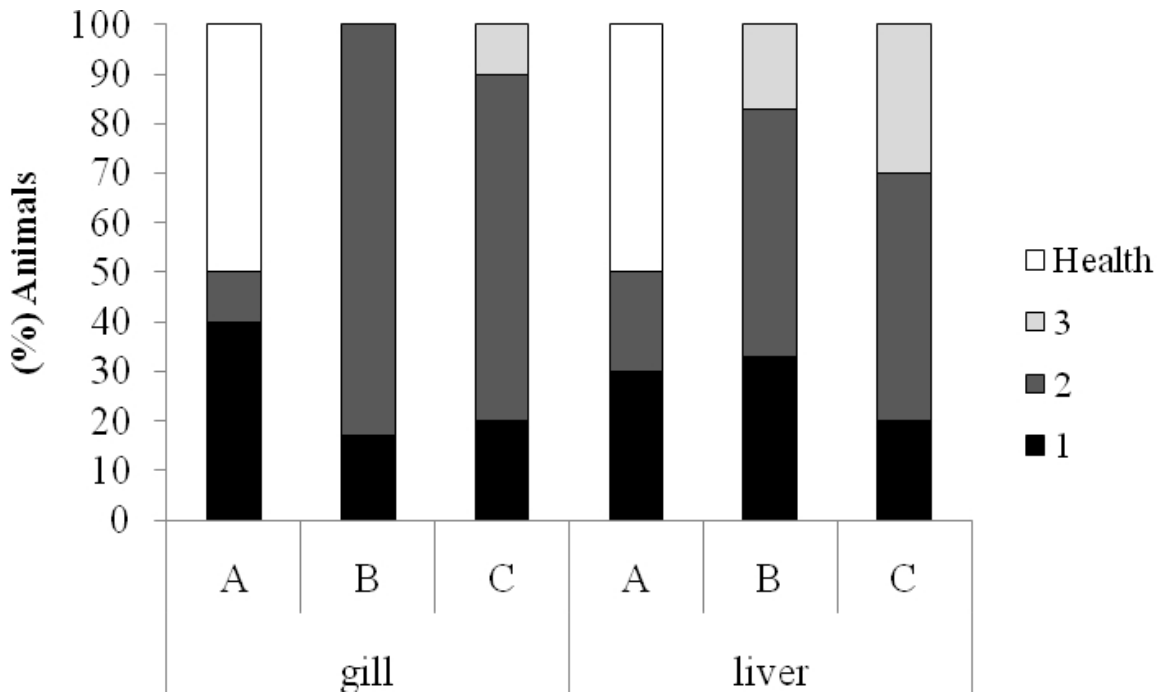


Fig. 2. Percentage of the species *H. marginatus* with gill and liver changes captured in the study areas (A, B and C). 1, 2 and 3 correspond to the different degrees of alteration of animals and health corresponds to those with no alteration.

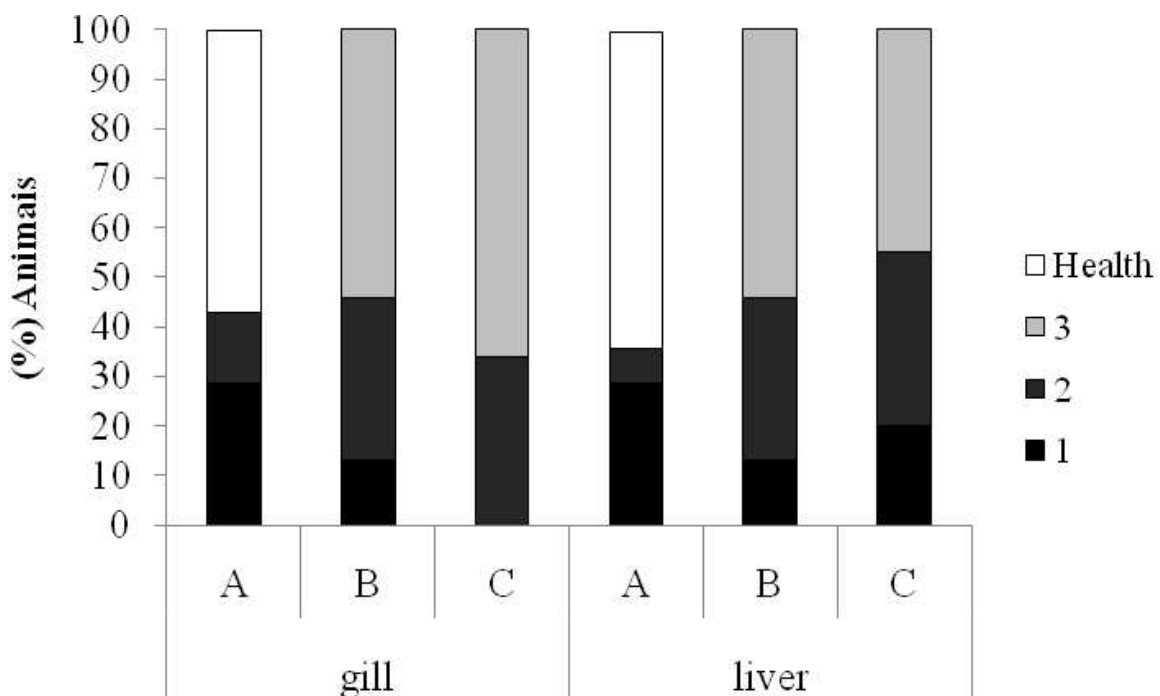


Fig. 3. Percentage of the species *L. dorsalis* with gill and liver changes captured in the study areas (A, B and C). 1, 2 and 3 correspond to different degrees of alteration of animals and health corresponds those with no alteration.



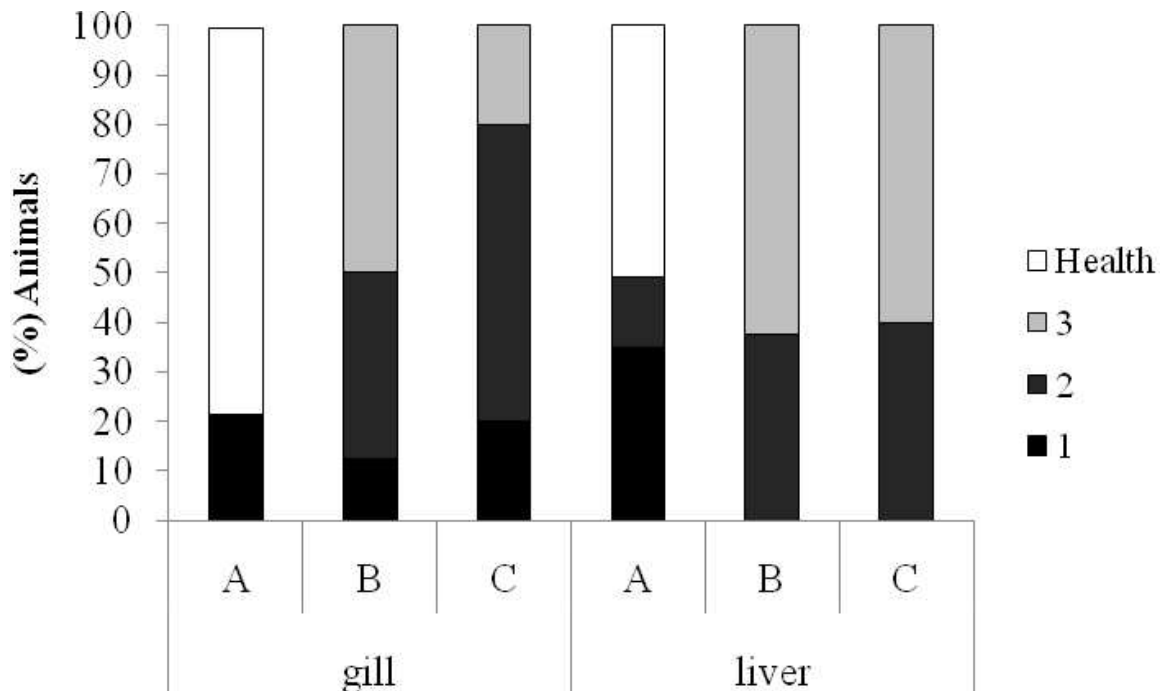


Fig. 4. Percentage of the species *P. Squamosissimus* with gill and liver changes captured in the study areas (A, B and C). 1, 2 and 3 correspond to different degrees of alteration of animals and health corresponds to those with no alteration.

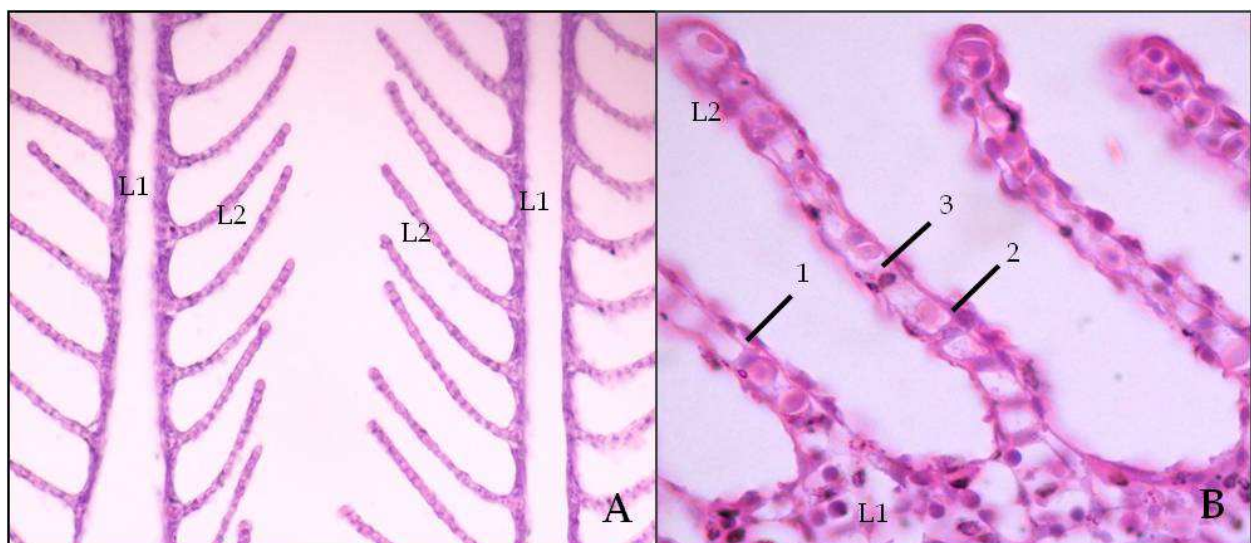


Fig. 5. Photomicrography of the gills tissue of animals captured in area. A - Normal gill structure with primary lamella (L1) and secondary (L2) with a single layer of pavement cells of slender appearance. 400X. B - Detail of a normal secondary lamella showing gill cell types, 1 - squamous cell, 2 - interlamellar cells and 3 - pillars cells 1000X. HE.

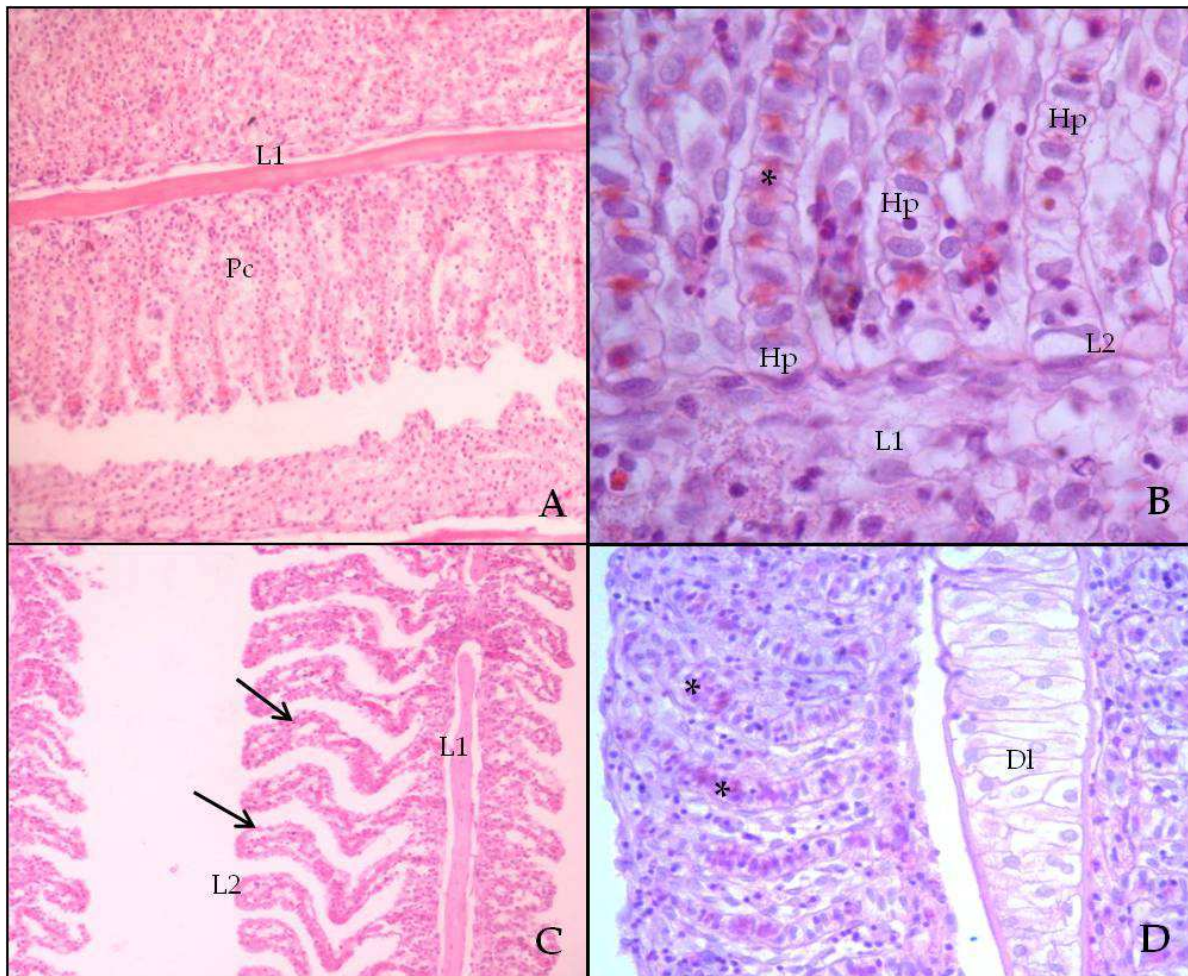


Fig. 6. Photomicrograph of branchial histopathology of animals captured in areas B and C. A – Changed gill tissue with intense celular proliferation (Pc) causing severe lamellar fusion 200X. B – hypertrophy (Hp) 1000X. C – Epithelium Lifting (Arrow) 400X. D – Dilation of sinus blood (DI) and early aneurysm (\*) 400X. HE.

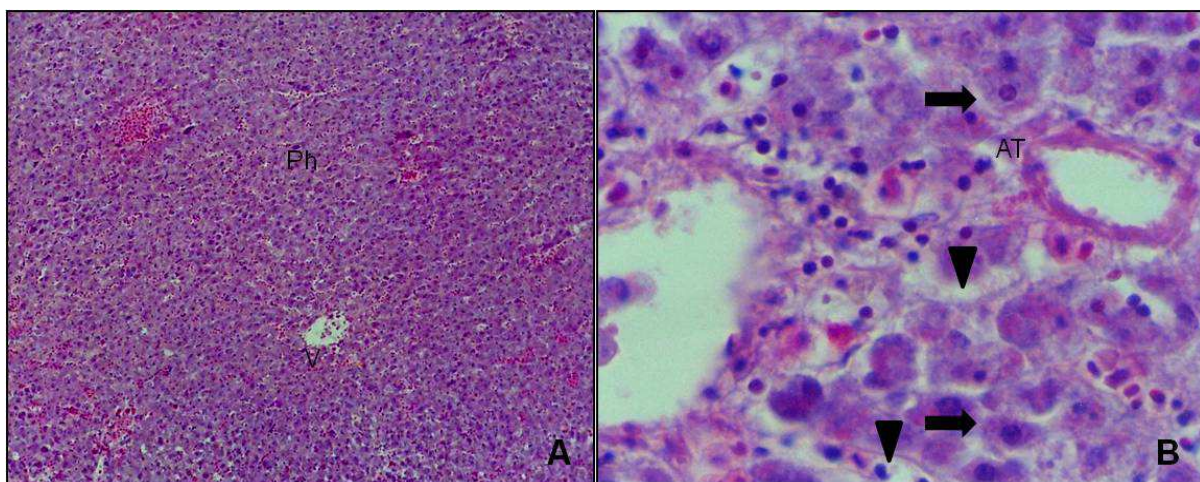


Fig. 7. Photomicrography of liver tissues of animals captured in control area – Normal liver structure with parenchyma (Ph) and veins (V) well defined 50X. B - Detail of a normal parenchyma, Hepatocytes (Thick Arrow) and sinusoids (head Arrow) 1000X. HE

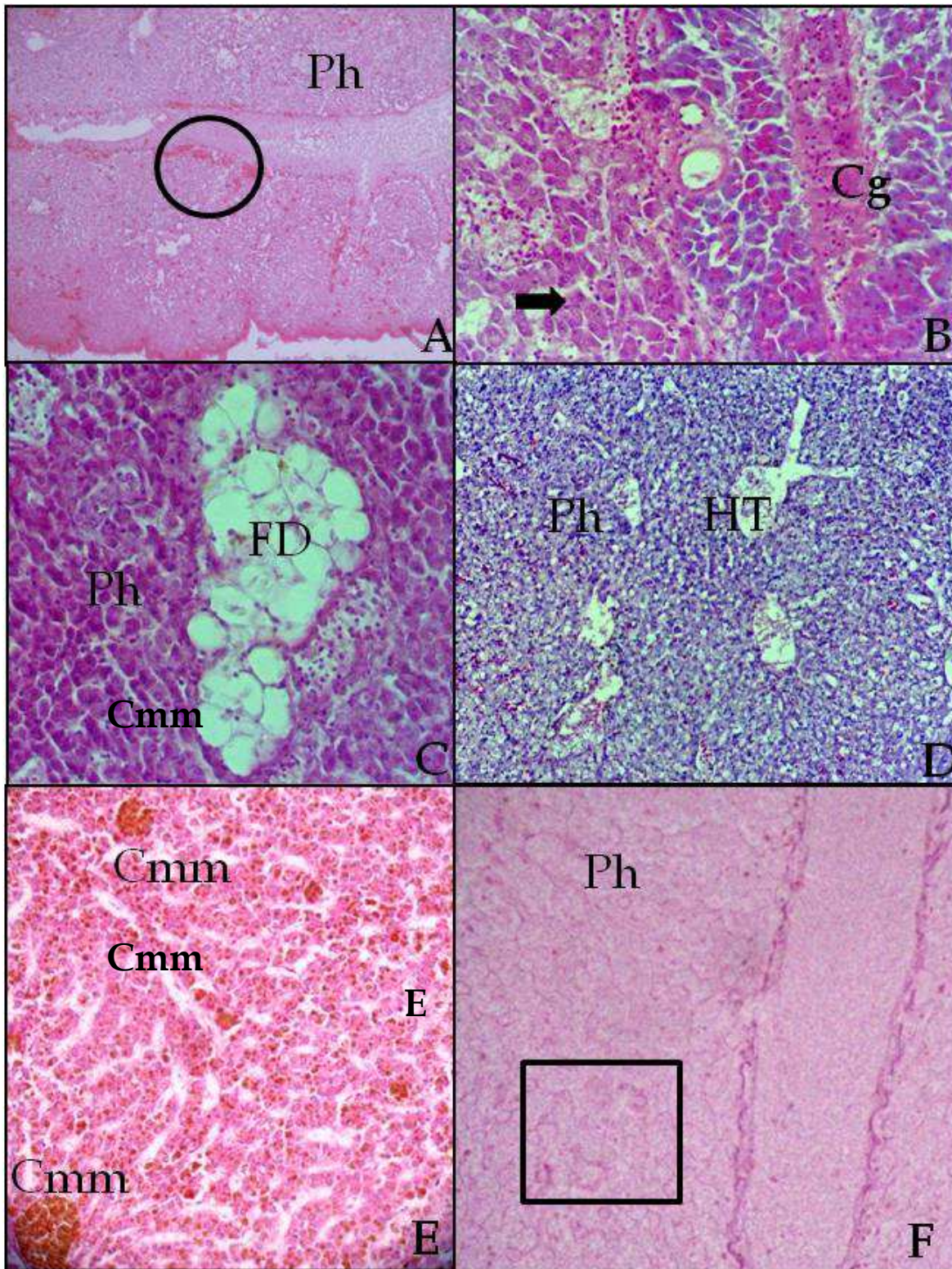


Fig. 8. Photomicrograph of hepatic histopathology of animals caught in areas B and C. A - Changed liver tissue with intense inflammation (circle) 200X. B - Congested vein (Cg) 400X. C - fatty degeneration (FD) 400X. D - Hepatitis (HT), 200X. E - Intense melanomacrophages centers (Cmm). 400X. F - Detail of a hepatic parenchyma with necrosis ( □ ). 400X. HE

#### 4. Discussion

In this study the temperature values were considered normal and slightly acidic pH. According to Campagna (2005), there is a close relationship between pH and carbon dioxide levels in the water, because with the discharge of sewage into rivers the water quality is altered by pathogenic bacteria and degradable organic substances and the decomposition of microorganisms involves the release of carbon dioxide and a consequent increase in the acidity of water. A similar situation may have occurred in areas B and C, since these areas have anthropogenic interference. These areas around the island showed a rapid population occupancy process, evidenced by domestic and industrial waste (Pinheiro, 1987; COHAB, 1997), particularly worrying since this island is inserted in an environmental protection area. The low values of DO in area A it is a typical feature of the region due to high turbidity and low incidence of light, hence causing a decrease in DO. Histology is a sensitive tool for the diagnosis of direct and indirect toxic effects that affect animal tissues (Braunbeck & Volk, 1993; Heath, 1995; Ferreira et al., 2005). Therefore it is considered an excellent method for assessing environmental quality (Freire et al., 2008). Thus this study used the histological responses of gill and liver of fish native to the Amazon as biomarker tools. The tissue damage could clearly differentiate the areas compromised as well as the control of the area, because healthy animals or mild changes of type I and II were found only in area A, result totally different from those observed in areas B and C, where several animals showed gill lesions and hepatic diseases classified as type III. Both gill and liver are extremely important organs because they serve for respiration and osmoregulation and for regulating ion concentrations (Hinton et al., 1992), hence they play a central role in metabolism (Arellano et al., 1999). Because the gills are in direct contact with water, toxic substances can easily interfere the morphophysiology of these organs, as for instance the use of organic pesticides (Laurent & Perry, 1991), detergents (Bolis & Rankin, 1980), acids (McDonald, 1983), salt (Fanta et al., 1995), industrial waste (Lindesjö & Thulin, 1994), ammonia (Miron et al., 2008) and heavy metals (Oliveira Ribeiro et al., 1996). During the breathing process, to prevent secondary lamellae, solid agents cross the filaments during the inflow of water, however, high concentrations of irritants dissolved in water inevitably come into contact with the outer surface of the gill filaments and secondary lamellae of the current circulation, which can alter the normal gill morphology, causing cell proliferation, epithelial lifting, hypertrophy, infiltration, and aneurysm (Simonato et al., 2008). When fish are subjected to stress, the proliferation of epithelial cells is one of the earliest changes that occurs rapidly in order to eliminate toxic agents (Laurent & Perry., 1991). Similar results were observed in this study since cell proliferation was the most found in all animals from areas B and C and some from area A. The epithelial lifting, which is a more severe injury, is caused by the change in distance of the respiratory epithelium basement membrane, causing the inefficient absorption of oxygen (Hibiya, 1992; Nowak, 1992). Result observed by Montes et al., 2010. Berrêdo et al. (2000) in a study conducted in Guajará Bay, showed high lead and chromium concentrations, metals that can undermine the tissue structure in the exposed animals. Thus we can infer that the animals evaluated in this study were responding to the effects of toxic substances. The histological changes found in the liver were: congestion, inflammation, hepatites, hemorrhage and necrosis. Vacuolated hepatocytes were also observed. The first effects of the contaminants usually occur at the cellular or intracellular level (Stephan & Mount, 1973). The melanomacrophage, also know as pigmented cells are related with the first segmento of organism defense, therefore are responsible for storing foreign material by capturing and processing of exogenous antigens and products of cell degradation (Bruslé et al.,

1996; Bombonato et al., 2007), as a result the increase in the amount of pigment indicate the increasing exposure (Fernandes et al., 2009), result observed in this study since in impacted areas the number of pigments were greater. Baldisserotto (2002) developed a classification that relates the degree of changes in liver tissues according to the degree of pollution in aquatic systems. These authors consider that a compromised parenchyma with several melanomacrophages centers of already exposed tissue can be considered as highly polluted environments, the situation seen in the specimens collected in areas B and C. Necrosis is induced by high concentrations of toxic substances (Rocha et al., 2010), it is then considered as a type III alteration. Some animals in the study areas had such an injury, thus we can infer a certain degree of pollution to the area. There was no significant difference among the animals, and despite their similar feeding habits, they responded similar to the same degree of toxicity. The morphological changes observed in the gill and liver of juveniles evidences an early sign of contamination in the Guajará Bay, thus indicating that these species can be used in environmental monitoring programs. However more studies should be performed as this is a protected area.

## 5. Conclusion

This study presented significant results and was effective in showing that human action can be mischievous if not properly controlled and the proximity of the Combú island with the urban area may be affecting water quality. In addition both the results of the pathology and the species were excellent tools for diagnosing and determining and such data may be used by managers as a form of environmental monitoring and possible remediation of the impacted area as this island is a protected area.

## 6. Acknowledgments

We would like to thank the CNPq (conselho nacional de desenvolvimento científico e tecnológico) for financial support to the project nº(552952/2007-2009)

## 7. References

- Arellano, J.M.; Storch, V. & Sarasquete, C. (1999). Histological changes and copper accumulation in liver and gills of the senegales *Sole solea senegalensis*. *Ecotoxicology and Environmental Safety*, Vol. 44, No. 1, pp 62-72.
- Au, D.W.T. (2004). The application of histo-cytopathological biomarkers in marine pollution monitoring: a review. *Marine pollution bulletin*, Vol. 48, No. 9-10, pp 817-834.
- Baldisserotto, B. (2002). *Fisiologia de peixe aplicada a piscicultura*, 211p. Santa Maria, SC, Brazil.
- Berrêdo, J.F ; Mendes, E.P.C.B. ; Mendes, A.C. ; Corrêa, G.C.S. & Neves, F.C.O. (2000). Transporte e comportamento geoquímico de metais pesados no estuário guajarinó/pa - brasil. *v workshop ecolab (ecossistemas costeiros amazônicos)*, Vol. 1, Macapá, AP, Brazil.
- Bolis, L.; Rankin, J.C. (1980). Interactions between vascular actions of detergent and catecholamines in perfused gills of european eel, *Anguilla anguilla* L. and brown trout, *Salmo trutta* L. *Journal of fish biology*, Vol. 16, pp. 61-73.
- Bombonato, M.T.S.; Rochel, S.S.; Vicentini, C.A. & Vicentini, I.B.F. (2007). Estudo morfológico do tecido hepático de *leporinus macrocephalus*. *acta scientiarum - biological sciences*, Vol. 29, No. 1, pp. 81-85, 2007.

- Braunbeck, T. & Volk, A. (1993). Toxicant-induced cytological alterations in fish liver as biomarkers of environmental pollution? a case study on hepatocellular effects of dinitro-o-cresol in golden ide (*Leuciscus idus melanotus*). in: *fish ecotoxicology and ecophysiology* (Ed.) 55-80, Braunbeck, T.; Hanke, W. & Segner, H. Birkhäuser verlag, Basel.
- Bruslè, J. & Anadon, G.G. (1996). The structure and function of fish liver. in: *Fish morphology horizon of new research*. (Ed.), p 16, Munshi, J.S.D. & Dutta, H.M, Beirute.
- Cajaraville, M.P.; Benianno, J.M.; Blasco, J.; Porte, C.; Sarasquete, C. & Viarengo, A. (2000) The use of biomarkers to assess the impact of pollution in coastal environments of the Iberian Peninsula: a practical approach. *The science of the total environment*. No.247, pp. 295-311.
- Camargo, M.M.P. & Martinez, C.B.R. (2007) Histopathology of gills, kidney and liver of a neotropical fish caged in an urban stream. *Neotropical ichthyology*, Vol. 5, No.3, pp. 327-336.
- Campagna, A.F. (2005) Toxicidade dos sedimentos da bacia hidrográfica do rio Monjolinho (São Carlos-SP): ênfase nas substâncias cobre, Aldrin e heptacloro. *Dissertação (mestrado em zootecnia)*, universidade de São Paulo, Pirassununga, Brazil.
- COHAB. (1997) *Relatório ambiental da região metropolitana de Belém*. Belém.
- Conama. (2005). *Ministério do meio ambiente. conselho nacional de meio ambiente. portaria nº 357 de 17 de março de 2005*. Brasília.
- Fanta, E. (1995). Gill structure of Antarctic fishes *Notthenia* (Gobinotothen) *Gibberifrons* and *Trematomus newnesi* (Notthenidae) stressed by salinity changes and some behavioral consequences. *Antarct. Rec.*, Vol. 39, pp. 25-39.
- Fernandes, C., Fontainhas-Fernandes, A.; Ferreira, M. & Salgado, M.A. (2009) Oxidative stress response in gill and liver of *Liza saliens*, from the Esmeriz-Paramos coastal lagoon, Portugal. *Archives of environmental contamination toxicology*, No.52, pp. 262-269.
- Ferreira, M.; Moradas-Ferreira, P. & Reis-Henriques, M.A. (2005) Oxidative stress biomarkers in two resident species, mullet (*Mugil cephalus*) and flounder (*Platichthys flesus*), from a polluted site in the Douro estuary, Portugal. *Aquatic toxicology*, No. 71, pp. 39-48.
- Freire, M.M.; Santos, V.G.; Ginuino, I.S.F.; Arias, A.R.L. (2008) Biomarcadores na avaliação da saúde ambiental dos ecossistemas aquáticos. *Oecologia Brasilienses*, Vol. 12, No. 3, pp. 347-354.
- Giari, L.; Simoni, E.; Manera, M. & Dezfuli, B.S. (2008) Histo-cytological responses of *Dicentrarchus labrax* (L.) following mercury exposure. *Ecotoxicology and environmental safety*, Vol. 70, pp. 400-410.
- Heath, A.G. (1995) *Water pollution and fish physiology*. (ed. 2). Boca Raton.
- Hibiya, T. (1982). *An atlas of fish histology, normal and pathological features*. New York, Kodansha Tokyo.
- Hinton, D.E.; Baumen, P.C.; Gardener, G.C.; Hawkins, W.E.; Hendricks, J.D.; Murchelano, R.A. & Okhiro, M.S. (1992). Histopathological biomarker. in: *biomarkers: biochemical, physiological and histological markers in anthropogenic stress society of environmental toxicology and chemistry special publication series* (eds), p 155-210. Huggett, R.J.; Kimerle, R.A.; Merhle, P.M. & Bergman, H.L. Chelsea, MI, USA.
- Huggett, R.J.; Kimerle, R.A. & Mehrle, P.M. (1992). Biomarkers biochemical, physiological, and histological markers of anthropogenic stress. Bergman, H.L. (ed). Boca Raton, FL, USA.
- Kammenga, J.E.; Dalliner, R.; Donker, M.H.; Kohler, H.R.; Simonsen V.; Triebkorn, R. & Weeks, J.M. (2000) Biomarkers in terrestrial invertebrates for ecotoxicological soil risk assessment. *Review of Environmental Contamination Toxicology*. Vol. 164, pp. 93-147.
- Laurent, P. & Perry, S.F. (1991) Environmental effects on fish gill morphology. *Physiology zoology*. Vol.64, pp. 4-25.

- Leonzio, C. & Fossi, M.C. (1993) Nondestructive biomarkers strategy: perspectives and applications: in: *Nondestructive biomarkers in vertebrates* (eds). 297-312. Fossi, M.C & Leonzio, C. London.
- Lindesjö, E. & Thulin, J. (1994). Histopathology of skin and gills of fish in pulp mill effluents. *Aquatic organisms*, Vol. 18, pp. 81-93.
- Martinez, C.B.R. & Souza, M.M. (2002) Acute effects of nitrite on ion regulation in two neotropical fish species. *Comparative biochemistry and physiology*, Vol. 133<sup>a</sup>, pp. 151-160.
- McDonald, D.G. (1983). The effects of h<sup>+</sup> upon the gills of freshwater fish. *Canadian journal of zoology*, Vol. 61, pp. 691-703.
- Miron, D.S.; Moraes, B.; Becker, A.G.; Crestani, M.; Spanevello, R.; Loro, V.L. & Baldissotto, B. (2008) Ammonia and pH effects on some metabolic parameters and gill histology of silver catfish, *Rhamdia quelen* (Heptapteriadae). *Aquaculture*, Vol. 277, pp. 192-196.
- Monserrat, J.M.; Martinez, P.E.; Geracitano, L.A.; Amado, L.L.; Martins, C.M.G.M.; Pinho, G.L.L.; Chaves, I.S.; Ferreira-cravo, M.; Ventura-lima, J. & Bianchini, A. (2007) Pollution biomarkers in estuarine animals: critical review and new perspectives. *Comparative biochemistry and physiology part c*, No.146, pp. 221-234.
- Montes, C.S.; Ferreira, M.A.P.; Santos, S.S.D.; von Ledebur, E.I.C.F. & Rocha, R.M. (2010) Branchial histopathological study of *Brachyplatystoma rousseauxii* (castelnaui, 1855) in the guajará bay, belém, pará state, brazil. *acta scientiarum biologicae*, Vol. 32, No. 1, pp. 87-92.
- Nowak, B. (1992) Histological changes in gill induced by residues of endosulfan. *Aquatic toxicology*, Vol. 23, pp. 65-84.
- Oliveira-ribeiro, C.A. (1996) Lethal effects of inorganic mercury on cells and tissues of *trichomycterus brasilienseis* (pisces; siluroidei). *Biocellular*. Vol.20, No.3, pp.171-178.
- van der Oost, R.; Beyer, J.; Vermeulen, N.P.E. (2003) Fish bioaccumulation and biomarkers in environmental risk assessment: a review. *Environmental toxicology and pharmacology*, Vol. 13, pp. 57-149.
- Pinheiro, R.V.L. (1987) Estudo hidrodinâmico e sedimentológico do estuário guajará - belém (pa). *Dissertação (mestrado em geociências)* universidade federal do pará, belém, PA, Brazil.
- Poleksic, V. & Mitrovic-Tutundzic, V. (1994) Fish gills a monitor of sublethal and chronic effects of pollution. in: muller, r.; lloyd, r. sublethal and chronic effects of pollutants of freshwater fish. oxford: fishing news books. No. 30, pp. 339-352.
- Ribeiro, K.T.S. (2004) Água e a saúde humana em belém. belém. cejup.
- Rocha, R.M.; Coelho, R.P.; Montes, C.S.; Santos, S.S.D. & Ferreira, M.A.P. (2010) Avaliação histopatológica do fígado de *Brachyplatystoma rousseauxii* (castelnaui, 1855) da Baía do guajará, belém, pará. *Ciência animal brasileira (ufg)*, Vol. 11, pp. 101-109.
- Schwaiger, J.; Wanke, R.; Adam, S.; Pawert, M.; Honnen, W. & Triebkorn, R. (1997) The use of histopathological indicators to evaluate contaminant related stress in fish. Dordrecht. *Journal Aquatic Ecosystem Stress Recovery*, Vol.6, No 1, pp. 75-86.
- Simonato J.D.; Guedes, C.L.B. & Martinez, C.B.M. (2008) biochemical, physiological and histological changes in the neotropical fish *prochilodus lineatus* exposed to diesel oil. *Ecotoxicol environmental safety* No. 69, pp. 112-120.
- Stephan, C.E. & Mount, D.J. (1973) Use of toxicity tests with fish in water pollution control, In: *Biological methods for the assessment of water quality*. Vol 528, pp. 164-177, Philadelphia.
- de la Torre, F.R.; Ferrari, L. & Salibián, A. (2005) Biomarkers of a native fish species (*Cnesterodon decemmaculatus*) application to the water toxicity assessment of a peri-urban polluted river of Argentina. *Chemosphere*, Vol.59, No. 4, pp. 577-583.



## **Environmental Monitoring**

Edited by Dr Ema Ekundayo

ISBN 978-953-307-724-6

Hard cover, 528 pages

**Publisher** InTech

**Published online** 04, November, 2011

**Published in print edition** November, 2011

"Environmental Monitoring" is a book designed by InTech - Open Access Publisher in collaboration with scientists and researchers from all over the world. The book is designed to present recent research advances and developments in the field of environmental monitoring to a global audience of scientists, researchers, environmental educators, administrators, managers, technicians, students, environmental enthusiasts and the general public. The book consists of a series of sections and chapters addressing topics like the monitoring of heavy metal contaminants in varied environments, biological monitoring/ecotoxicological studies; and the use of wireless sensor networks/Geosensor webs in environmental monitoring.

### **How to reference**

In order to correctly reference this scholarly work, feel free to copy and paste the following:

Caroline da Silva Montes, José Souto Rosa Filho and Rossineide Martins Rocha (2011). Histological Biomarker as Diagnostic Tool for Evaluating the Environmental Quality of Guajará Bay – PA - Brazil, Environmental Monitoring, Dr Ema Ekundayo (Ed.), ISBN: 978-953-307-724-6, InTech, Available from: <http://www.intechopen.com/books/environmental-monitoring/histological-biomarker-as-diagnostic-tool-for-evaluating-the-environmental-quality-of-guajara-bay-pa>

**INTECH**  
open science | open minds

### **InTech Europe**

University Campus STeP Ri  
Slavka Krautzeka 83/A  
51000 Rijeka, Croatia  
Phone: +385 (51) 770 447  
Fax: +385 (51) 686 166  
[www.intechopen.com](http://www.intechopen.com)

### **InTech China**

Unit 405, Office Block, Hotel Equatorial Shanghai  
No.65, Yan An Road (West), Shanghai, 200040, China  
中国上海市延安西路65号上海国际贵都大饭店办公楼405单元  
Phone: +86-21-62489820  
Fax: +86-21-62489821



© 2011 The Author(s). Licensee IntechOpen. This is an open access article distributed under the terms of the [Creative Commons Attribution 3.0 License](#), which permits unrestricted use, distribution, and reproduction in any medium, provided the original work is properly cited.

IntechOpen

IntechOpen