

We are IntechOpen, the world's leading publisher of Open Access books Built by scientists, for scientists

4,800

Open access books available

122,000

International authors and editors

135M

Downloads

Our authors are among the

154

Countries delivered to

TOP 1%

most cited scientists

12.2%

Contributors from top 500 universities

**WEB OF SCIENCE™**Selection of our books indexed in the Book Citation Index
in Web of Science™ Core Collection (BKCI)

Interested in publishing with us?
Contact book.department@intechopen.com

Numbers displayed above are based on latest data collected.

For more information visit www.intechopen.com

Modeling and Simulation of High Performance Electrical Vehicle Powertrains in VHDL-AMS

K. Jaber, A. Fakhfakh and R. Neji
National School of Engineers, Sfax
Tunisia

1. Introduction

Nowadays the air pollution and economical issues are the major driving forces in developing electric vehicles (EVs). In recent years EVs and hybrid electric vehicles (HEVs) are the only alternatives for a clean, efficient and environmentally friendly urban transportation system (Jalalifar *et al.*, 2007). The electric vehicle (EV) appears poised to make a successful entrance to the personal vehicle mass market as a viable alternative to the traditional internal combustion engine vehicles (ICE): Recent advances in battery technology indicate decreasing production costs and increasing energy densities to levels soon acceptable by broad consumer segments. Moreover, excluding the generation of the electricity, EVs emit no greenhouse gases and could contribute to meeting the strict CO₂ emission limits necessary to dampen the effect of global warming. Several countries around the world have therefore initiated measures like consumer tax credits, research grants or recharging station subsidies to support the introduction of the EV. Finally, the success alternative vehicles like the Toyota Prius Hybrid proves a shift in consumer interest towards cleaner cars with lower operating costs (Feller *et al.*, 2009).

Nonetheless, the EV will first need to overcome significant barriers that might delay or even prevent a successful mass market adoption. Permanent Magnet Synchronous Motor (PMSM) is a good candidate for EVs.

In this work, a high level modelling and an optimization is reported for the determination of time response (T_r) and power (P) of Electric Vehicle. The electric constant of back-electromotive-force, stator d- and q- axes inductances, switching period, battery voltage, stator resistance and torque gear ratio were selected as factors being able to influence T_r and P . The optimization process was carried out with Doehlert experimental design (Jaber *et al.*, 2010).

The optimization is based on simulations of the chain of the electric vehicle; every block is simulated with a different abstraction level using the hardware description language VHDL-AMS. The chain of electric traction is shown in Figure 1. It consists of 4 components: Control strategy, Inverter, PMSM model and Dynamic model. A right combination of these four elements determines the performance of electric vehicles.

VHDL (Very High Speed Integrated Circuit Hardware Description Language) is a commonly used modelling language for specifying digital designs and event-driven systems. The popularity of VHDL prompted the development of Analog and Mixed-Signal

As an electric vehicle is a multidisciplinary system, the new standard VHDL-AMS is suitable for the modelling and the simulation of such system in the same software environment and with different abstraction levels (Jaber *et al.*, 2009).

2. Dynamic model

The first step in vehicle performance modelling is to write an electric force model. This is the force transmitted to the ground through the drive wheels, and propelling the vehicle forward. This force must overcome the road load and accelerate the vehicle (Sadeghi *et al.*, 2009).

For any mission profile, an electric road vehicle is subjected to forces that the onboard propulsion system has to overcome in order to propel or retard the vehicle. These forces are composed of several components as illustrated in Figure 2. The effort to overcome these forces by transmitting power via the vehicle drive wheels and tyres to the ground is known as the total tractive effort or total tractive force.

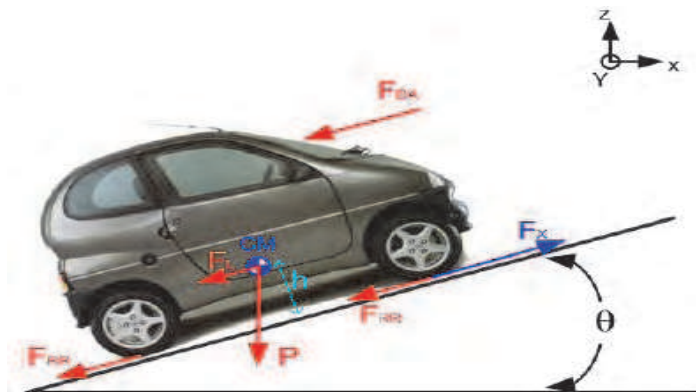


Fig. 2. Forces on a vehicle

The rolling resistance is primarily due to the friction of the vehicle tires on the road and can be written as (Jalalifar *et al.*, 2007):

$$F_{RR} = f \times M_V \times g \quad (1)$$

The aerodynamic drag is due to the friction of the body of vehicle moving through the air. The formula for this component is as in the following:

$$F_{DA} = \frac{1}{2} \cdot \rho \cdot S \cdot C_x \cdot V^2 \quad (2)$$

An other resistance force is applied when the vehicle is climbing of a grade. As a force in the opposite direction of the vehicle movement is applied:

$$F_L = M_v \cdot g \cdot \sin \alpha \quad (3)$$

The power that the EV must develop at stabilized speed is expressed by the following equation:

$$P_a = V \cdot (F_{RR} + F_{DA} + F_L) \quad (4)$$

The power available in the wheels of the vehicle is expressed by:

$$P_m = T_{em} \cdot r_m \cdot \frac{V}{R_{wheels}} \quad (5)$$

According to the fundamental principle of dynamics the acceleration of the vehicle is given by:

$$\gamma = \frac{P_m - P_a}{M_v V} \quad (6)$$

$$\gamma = \frac{T_{em} \cdot r_m - R_{wheels} \cdot (F_{RR} + F_{DA} + F_L)}{M_v \cdot R_{wheels}} \quad (7)$$

$$T_l = R_{wheels} \cdot (F_{RR} + F_{DA} + F_L) \quad (8)$$

$$W_m = \frac{r_m}{R_{wheels}} \cdot \frac{d\gamma}{dt} \quad (9)$$

A VHDL-AMS model for the dynamic model is specified in an “architecture” description as show in Listing 1.

```

ARCHITECTURE behav OF dynamic_model IS
  QUANTITY Speedm_s : REAL := 0.0;
  QUANTITY F_RR : REAL := 0.0;
  QUANTITY F_DA : REAL := 0.0;
  QUANTITY F_L : REAL := 0.0;

BEGIN
  F_RR == f*Mv*g;
  F_DA == 0.5*da*Sf*Cx* Speedm_s * Speedm_s;
  F_L == Mv*g*sin(alpha)
  Tl == Rwheels*(F_RR + F_DA + F_L);
  Speedm_s 'dot == (1.0/(Mv*Rwheels))*(rm*Tem-Tl);
  Speedkm_h == 3.6 * Speedm_s;
  Wm == (rm/Rwheels)*Speedm_s;
END ARCHITECTURE behav;

```

Listing 1. VHDL-AMS dynamic model

3. PMSM model

A permanent magnet synchronous motor (PMSM) has significant advantages, attracting the interest of researchers and industry for use in many applications.

Usage of permanent magnet synchronous motors (PMSMs) as traction motors is common in electric or hybrid road vehicles (Dolecek *et al.*, 2008). The dynamic model of the PMSM can be described in the d-q rotor frame as follows:

$$V_d = R i_d + L_d \frac{di_d}{dt} - \omega_e L_q i_q \tag{10}$$

$$V_q = R i_q + L_q \frac{di_q}{dt} + \omega_e L_d i_d + K \omega_m \tag{11}$$

Where $K = P\phi_m$ is the electric constant of back-electromotive-force (EMF), it is calculated according to the geometrical magnitudes of the motor so that it can function with a high speed. The equations giving the stator current can be written in the following form:

$$I_d = \frac{1}{L_d s + R} (V_d + \omega_e L_q I_q) \tag{12}$$

$$I_q = \frac{1}{L_q s + R} (V_q - \omega_e L_d I_d - K \omega_m) \tag{13}$$

The electromagnetic torque developed by the motor is given by the following equation:

$$T_{em} = \frac{3}{2} K I_q + \frac{1}{2} p (L_d - L_q) I_d I_q \tag{14}$$

The equation giving the angle by the motor can be written in the following form:

$$\frac{d\theta}{dt} = p \omega_m \tag{15}$$

Figure 3 shows the description of the model of the PMSM in Simplorer 7.0 software.

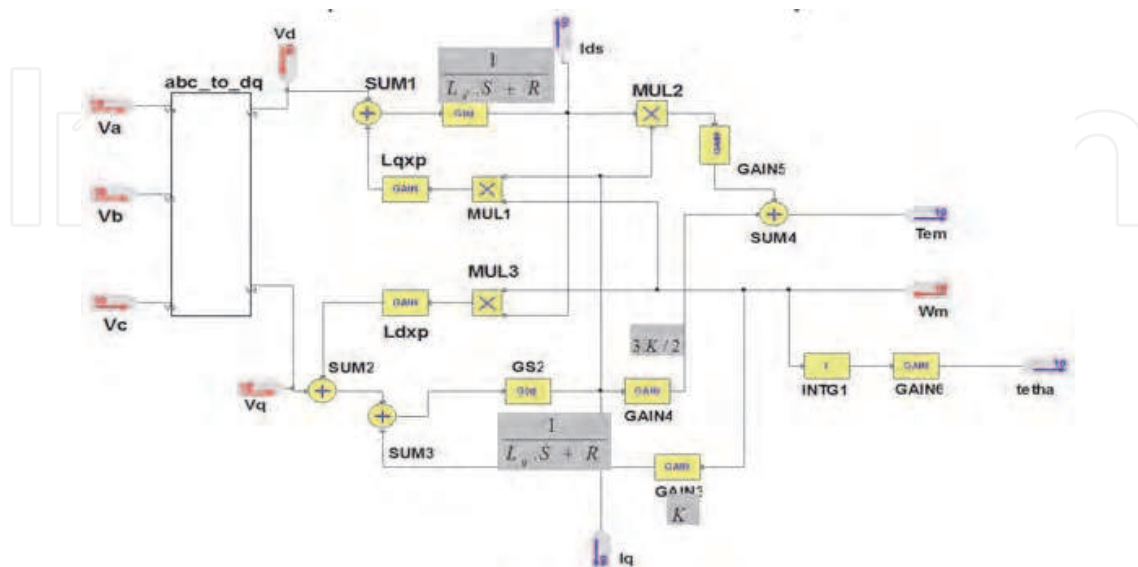


Fig. 3. SIMPLORER model of the PMSM in the d-q rotor frame

4. Control strategy

In recent years, vector-controlled ac motors, such as induction motor, permanent-magnet synchronous motor (PMSM), and synchronous reluctance motor, have become standard in industrial drives and their performance improvement is an important issue. Particularly, improvement of control performance and drive efficiency is essentially required for drives used in electric vehicles (Ben Salah *et al.*, 2008):

$$T_{em} = \frac{3}{2} K_s I_s \sin(\theta_s - p.\theta(t)) \quad (16)$$

To achieve an optimal control, which means a maximum torque, it is necessary to satisfy the following condition:

$$\theta_s - p.\theta(t) = \pm \frac{\pi}{2} \quad (17)$$

from where

$$I_s = I_q \quad \text{and} \quad I_d = 0 \quad (18)$$

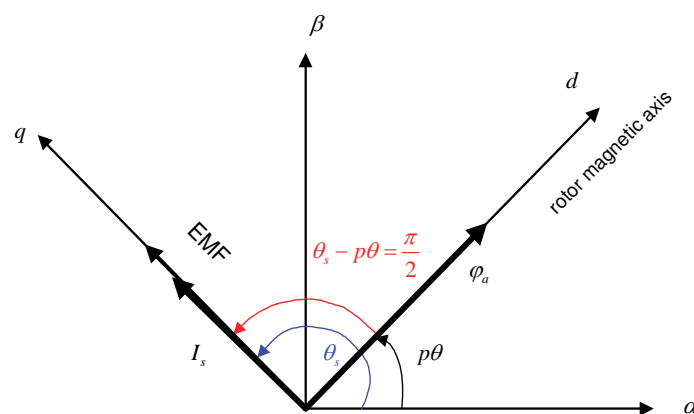


Fig. 4. Stator current and EMF in the d-q rotor frame

The first part (A) in figure 1 illustrates the control strategy. It presents a first **PI** speed control used for speed regulation. The output of the speed control is I_{qref} ; its application to a second **PI** current regulator makes the adjustment of phase and squaring currents. The outputs of current regulators are V_{dref} and V_{qref} ; they are applied to a Park transformation block. Where, V_{dref} and V_{qref} are the forcing function to decide the currents in d-q axis model which may be obtained from 3-phase voltages (V_a , V_b and V_c) through the park transformation technique as:

$$V_a = V_{dref} \cdot \cos(\theta) - V_{qref} \cdot \sin(\theta) \quad (19)$$

$$V_b = V_{dref} \cdot \cos\left(\theta - \frac{2\pi}{3}\right) - V_{qref} \cdot \sin\left(\theta - \frac{2\pi}{3}\right) \quad (20)$$

$$V_c = V_{dref} \cdot \cos\left(\theta - \frac{4\pi}{3}\right) - V_{qref} \cdot \sin\left(\theta - \frac{4\pi}{3}\right) \quad (21)$$

The generation of the control signals of the inverter is made by comparison of the simple tensions obtained following the regulation with a triangular signal. Its period is known as switching period.

The different blocks constituting the traction chain were described in a VHDL-AMS structural model by including all expressions detailed above.

5. Inverter model

The structure of a typical three-phase VSI is shown in figure 6. As shown below, V_a , V_b and V_c are the output voltages of the inverter. S_1 through S_6 are the six power transistors IGBT that shape the output, which are controlled by a , a' , b , b' , c and c' . When an upper transistor is switched on (i.e., when a , b or c are 1), the corresponding lower transistor is switched off (i.e., the corresponding a' , b' or c' is 0). The on and off states of the upper transistors, S_1 , S_3 and S_5 , or equivalently, the state of a , b and c , are sufficient to evaluate the output voltage.

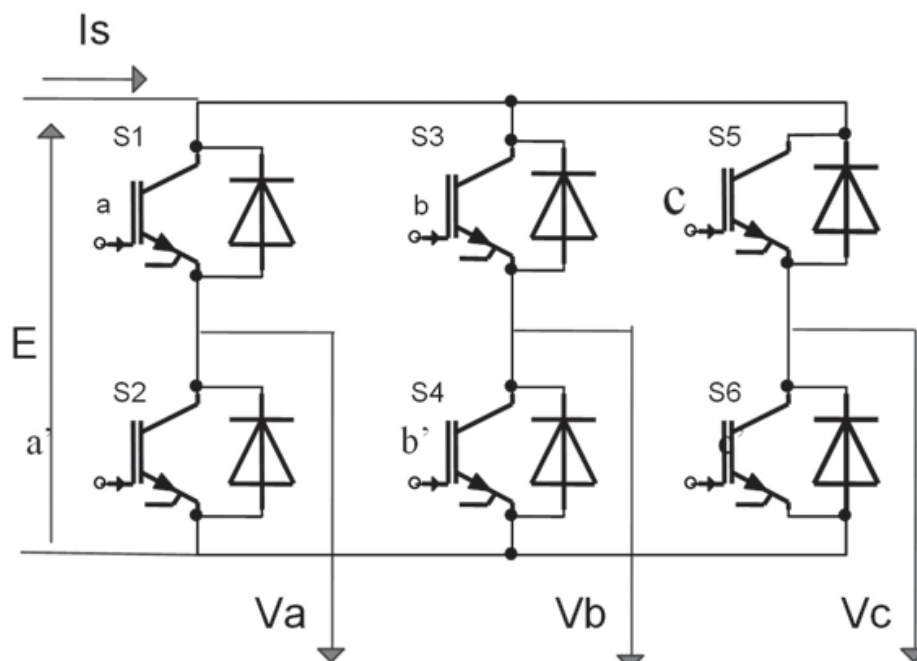


Fig. 5. Inverter connected to a balanced load

The relationship between the switching variable vector $[a, b, c]^t$ and the line-to-line output voltage vector $[V_{ab} \ V_{bc} \ V_{ca}]^t$ and the phase (line-to-neutral) output voltage vector $[V_a \ V_b \ V_c]^t$ are given by the following relationships, where a , b , c are the orders of S_1 , S_3 , S_5 respectively.

$$\begin{bmatrix} V_{ab} \\ V_{bc} \\ V_{ca} \end{bmatrix} = E \cdot \begin{bmatrix} 1 & -1 & 0 \\ 0 & 1 & -1 \\ -1 & 0 & 1 \end{bmatrix} \cdot \begin{bmatrix} a \\ b \\ c \end{bmatrix} \quad \begin{bmatrix} V_a \\ V_b \\ V_c \end{bmatrix} = \frac{1}{3} \cdot E \cdot \begin{bmatrix} 2 & -1 & -1 \\ -1 & 2 & -1 \\ -1 & -1 & 2 \end{bmatrix} \cdot \begin{bmatrix} a \\ b \\ c \end{bmatrix}$$

The different blocks constituting the traction chain were introduced both in MATLAB and SIMPLORER 7.0 softwares. They were described in structural models by including all expressions detailed above. The different simulation parameters are summarized in table 1:

Parameters	Designation	Values
Vmax	Max Speed	80 km/h
Cx	Drag coefficient of the vehicle	0.55
S	Frontal surface of the vehicle	1.8 m ²
f	Coefficient of rolling friction	0.025
Mv	Total mass of the vehicle	800 kg
p	Pair of pole number	4

Table 1. Simulation parameters

6. Simulation results

6.1 MATLAB environment

Figure 6 details the vector control ($I_d=0$ strategy) of the vehicle, implemented under Matlab/simulink software.

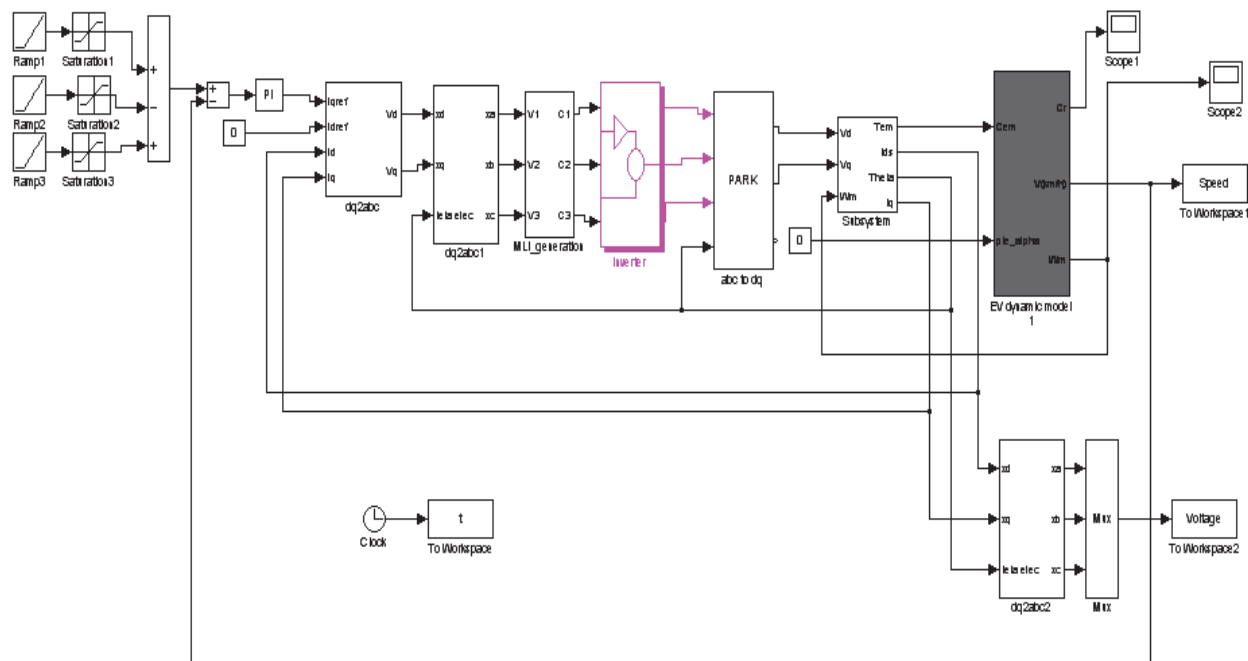


Fig. 6. SIMULINK models for a vector control and his interaction in a chain of traction for vehicle

Figure 7 shows the simulation result. The reference speed of the EV is reached after 8.5s. Simulations with MATLAB are useful to verify that our system works well without any dysfunction. But in this case, the traction chain of the EV is described with ideal functional models. Going down in the hierarchical design level, more suitable software should be applied. For this reason, our system was described in VHDL-AMS and simulated with Simplorer 7.0 software.

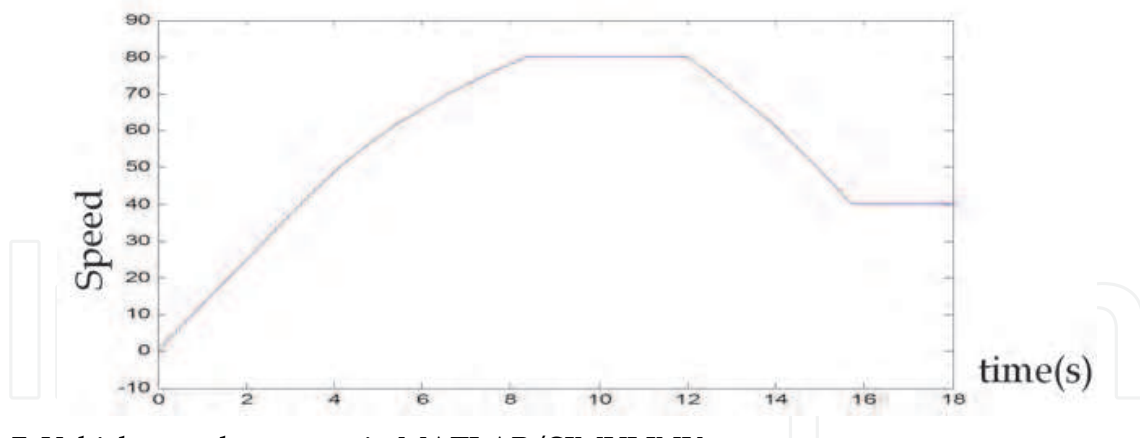


Fig. 7. Vehicle speed response in MATLAB/SIMULINK

6.2 VHDL-AMS virtual prototype

VHDL-AMS descriptions were developed for each block of the electric vehicle including structural models. The obtained blocks were connected in Simplorer 7.0 Software environment to obtain a high level description our system as detailed on figure 8. The exposed blocks include analogue/digital electronic behavioural descriptions. It represents a so complex multi-domain system (Fakhfakh *et al.*, 2006).

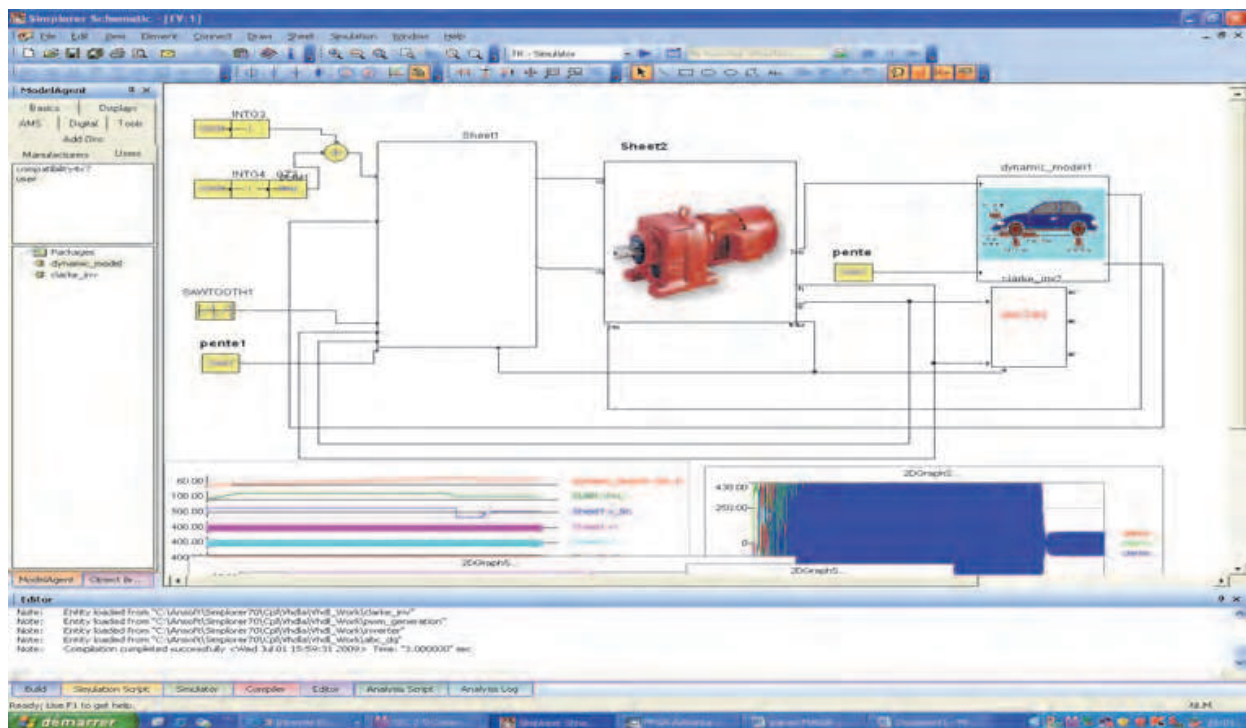


Fig. 8. Electric Vehicle description in Simplorer environment

6.3 Comparison

The dynamic response of the vehicle speed is depicted in figure 9, obtained with both Simplorer and Matlab software. In table 2, we compare the simulation runtime and the obtained response time of the Electric Vehicle. We can distinguish clearly the difference between the two simulation results.

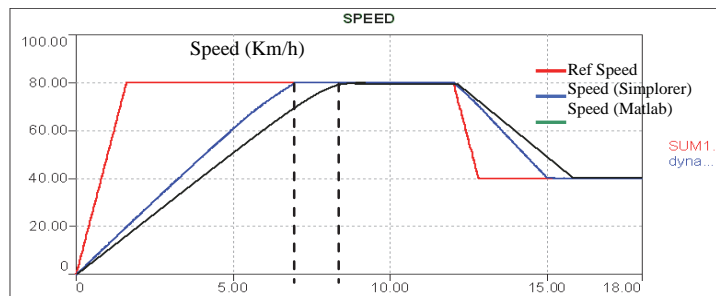


Fig. 9. Dynamic response of the vehicle speed in Simplorer and Matlab

Software	Simulation runtime	Time response of max speed
Matlab	24s	8.5 s
Simplorer	66s	6.5 s

Table 2. Simulation runtime simulation

To conclude, Matlab executes simulations more rapidly (24s); we obtained a dynamic response equal to 8.5s. Simplorer simulation runtime is three times longer due to the fact that the modelling abstraction level is lower compared to the functional description with Matlab; the dynamic response is about 6.5s. The power of the Electric Vehicle is about 42 kW.

To resume, we can clearly conclude that simulating a mathematical model with MATLAB software is useful to verify the ideal response of our EV. But with Simplorer environment we can attend the lower abstraction models. In this case, it is possible to simulate the effect of physical parameters such as temperature, battery voltage, etc.

7. Optimization with experimental designs

To optimize our control strategy, we have adopted an experimental design approach by applying the Doehlert design. Six factors have been considered as shown on table 3: K_e , L_d , T_s , E , R and r_m . According to the number of factors, in order to limit the number of runs and to take into account the major effects, a screening study is necessary. Consequently, a first step of screening was conducted using a fractional factorial design. The last with six factors is a design involving a minimum of 45 experiments (see appendix).

For each factor, we define three levels: low, center and high levels as detailed on table 3.

Naturel Variable	Parameters	Coded variable	Low Level	Center Level	High Level
K_e	electric constant of back-electromotive-force (EMF)	X1	0.05	0.1	0.2
$L_d = L_q$	Stator d- and q- axes inductances (mH).	X2	0.216	0.416	0.616
T_s	Switching period (μs)	X3	100	300	500
E	Battery voltage (V)	X4	200	300	400
R	Stator resistance (Ω)	X5	0.02	0.05	0.08
r_m	Torque gear ratio	X6	1	3	5

Table 3. Description of experimental variables in the screening design

Our goal is to optimize both the response time and the power of the studied system. The analysis of results and the building of experimental designs were carried out with the NEMRODW mathematical statistical software (El Ati-Hellal *et al.*, 2009).

Because of the none-linearity of the studied system, the experimental response Y_i can be represented by a quadratic equation of the response surface (Elek *et al.*, 2004):

$$Y_{1,2} = b_0 + \sum_{i=1}^6 b_i x_i + \sum_{\substack{i=1 \\ j=2 \\ i \neq j}}^6 b_{ij} x_i x_j \quad (19)$$

Y_1 : response representing the response time;

Y_2 : response representing the power;

To find an optimum, we should minimize (Y_1) and maximize (Y_2). So we define the following experimental response Y :

$$Y = \frac{\alpha}{Y_1} + \beta \cdot Y_2 \quad \text{with } \alpha=350 \text{ and } \beta=0.6 \quad (20)$$

α and β are ponderation factors. In our case, we give the same weight to the response time and the power.

Coefficients b_i of the response surface (19) were calculated with Nemrodw software without taking into account experiment 45 due to high residual.

To decide about the efficiency of the obtained regression equation, we compute R^2 as:

$$R^2 = (\text{Sum of squares attributed to the regression}) / \text{Total Sum of squares}$$

We found $R^2 = 0.976$; it is well within acceptable limits of $R^2 \geq 0.8$ which revealed that the experimental data well fitted the second-order polynomial equation as detailed on table 4.

	Y
Standard error of response	8.4837
R^2	0.976
R^2A	0.939
R^2 pred	0.777
PRESS	11512.167
Degrees of freedom	17

Table 4. Statistical data and coefficients of y response model: $y = f(x_1, x_2, x_3, x_4, x_5, x_6)$

To estimate the quality of the model and validate it, analysis of the variance and the residual values (difference between the calculated and the experimental result) were examined. According to the residual (Figure 10), the choice of the model was appropriate: a systematic behavior was not observed in the plot, for example, an increase in residual suggesting the necessity to transform the response.

After the validation of the proposed second-order polynomial model, we can draw 2D and 3D plots representing the evolution of Y versus 2 factors.

Using contour plot graphs makes the evaluation of the influences of the selected factors easier. Figure 11 illustrates the experimental response obtained by the simultaneous variation of X_2 (Ld&Lq) and X_6 (rm). We concluded that in order to increase the response Y , an increase of X_6 and decrease of X_2 is necessary (Danion *et al.*, 2004) & (El Hajjaji *et al.*, 2005).

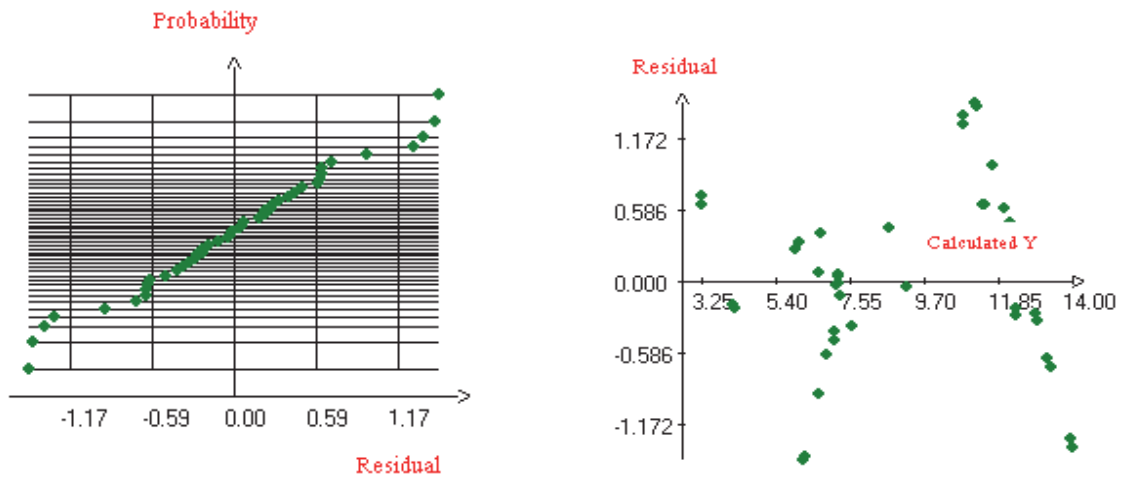


Fig. 10. Overview of residual: Normal probability and residual plot

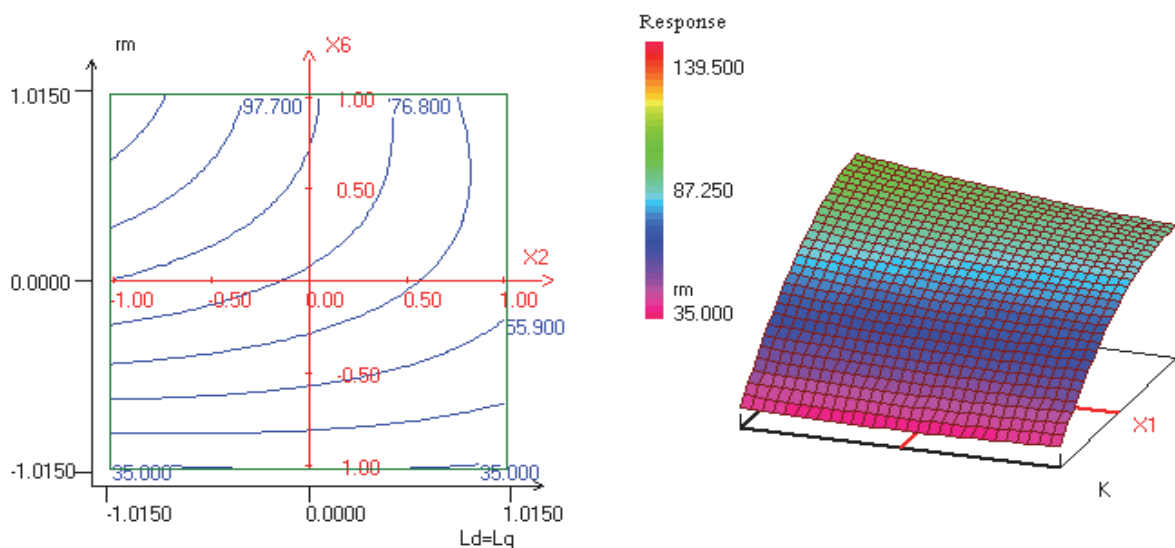


Fig. 11. Contour plot and response surface (Y) of the Torque gear ratio (m) and Stator d-q axes inductances (L_d & L_q).

An optimal result of control strategy on the electrical vehicle is obtained with NEMRODW software to obtain an optimal dynamic response. It is detailed on table 5.

Response	Before optimization	After optimization
Tr (Y1)	6.5s	4.65s
P (Y2)	42 Kw	58 Kw

Table 5. Optimization result

The optimal values of variables corresponding to the optimal dynamic response (Tr) and power (P) are resumed on table 6.

Variable	Factor	Optimal value in NEMRODOW	Real values before optimization	Real values after optimization
X1	K	1.0094	0.1	0.2
X2	Ld=Lq	0.3976	0.416 mH	0.216 mH
X3	Ts	1.0086	300 μ s	500 μ s
X4	E	1.0052	300 V	400 V
X5	R	1.0061	0.05 Ω	0.08 Ω
X6	rm	0.9934	3	5

Table 6. Optimal values of variables

The speed response shows the good dynamic suggested of our vehicle. The reference speed is attained in 4.65 second. The direct current is equal to zero in the permanent mode, the quadratic current present the image of the electromagnetic torque. The power is increased to reach 58 kW.

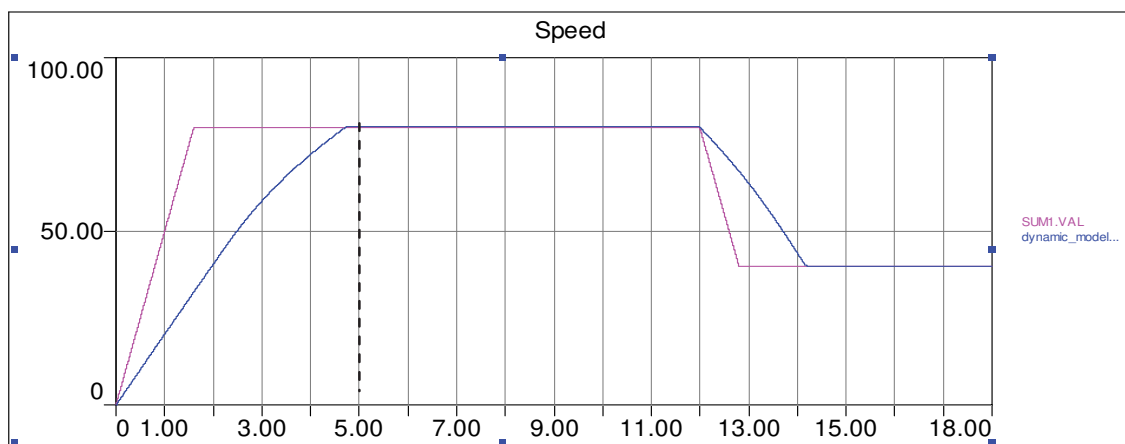


Fig. 10. Dynamic response of the vehicle speed after optimization

10. Conclusion

In this paper, we developed a VHDL-AMS description of a vehicle traction chain and we adopt the vector control $I_d=0$ strategy to drive the designed PMSM. The simulation of the dynamic response of the vehicle shows the effectiveness of this mode of control and the PMSM in the field of the electric traction. The obtained result with Simplorer differs from that obtained with Matlab because we used more accurate models. We think that VHDL-AMS is more suitable to predict the electric vehicle behavior since it is a multidisciplinary HDL. We have shown that response surface analysis coupled with a carefully constructed experimental design is a useful tool to carry out an Optimal Simulation of the Control Strategy of an Electrical Vehicle.

11. Nomenclature

V_d, V_q Stator d- and q- axes voltages (V).
 i_d, i_q Stator d- and q- axes currents (A).

R	Stator resistance (Ω).
L_d, L_q	Stator d- and q- axes inductances (H).
p	Number of poles pairs.
Φ_m	Flux created by rotor magnets (Wb).
ω_m	Angular speed of the motor (rad/s).
f	Coefficient of rolling friction.
M_v	Total mass of the vehicle (kg).
g	Acceleration of terrestrial gravity (m/s^2).
l	Density of the air (kg/m^3).
S	Frontal surface of the vehicle (m^2).
C_x	Drag coefficient of the vehicle.
V	Speed of vehicle (m/s).
a	Angle that make the road with the horizontal (in $^\circ$).
r_m	Torque gear ratio.
R_{wheels}	Wheels radius (m).
T_{em}	Electromagnetic torque of the motor (N.m)
γ	Acceleration of the vehicle (s^{-2}).
T_l	Load torque (N.m).
E	Battery voltage
T_s	Switching period
V_{max}	Maximum speed

12. Appendix – Doehlert matrix (six factors)

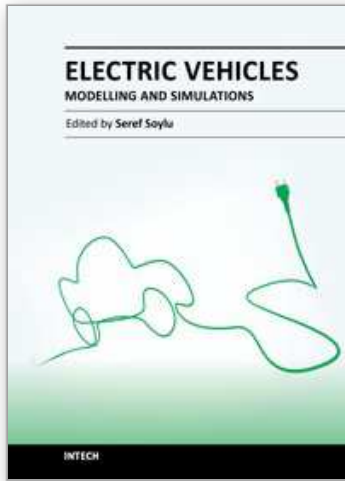
N°Ex p	Factors						Responses $Y=\alpha/Y_1+\beta Y_2$		
	Ke	Ld=Lq [mH]	Ts [μ s]	E [V]	R [ohm]	rm	Y1(Tr) [s]	Y2(P) [Kw]	Response (Y)
1	-1	-1	-1	-1	-1	-1	12.62	13.08	35.582
2	1	-1	-1	-1	-1	1	12.10	52.80	60.600
3	-1	1	-1	-1	-1	1	12.08	20.00	40.973
4	1	1	-1	-1	-1	-1	12.64	12.78	35.358
5	-1	-1	1	-1	-1	1	4.80	58.00	107.710
6	1	-1	1	-1	-1	-1	12.67	12.72	35.256
7	-1	1	1	-1	-1	-1	12.63	12.85	35.422
8	1	1	1	-1	-1	1	12.09	24.70	43.770
9	-1	-1	-1	1	-1	1	3.89	100.00	149.974
10	1	-1	-1	1	-1	-1	12.63	12.50	35.212
11	-1	1	-1	1	-1	-1	12.64	13.00	35.490
12	1	1	-1	1	-1	1	6.60	39.86	76.946
13	-1	-1	1	1	-1	-1	12.64	12.80	35.370

14	1	-1	1	1	-1	1	4.00	98.00	146.300
15	-1	1	1	1	-1	1	6.40	40.00	78.687
16	1	1	1	1	-1	-1	12.64	12.68	35.298
17	-1	-1	-1	-1	1	1	4.71	60.00	110.310
18	1	-1	-1	-1	1	-1	12.66	12.24	35.000
19	-1	1	-1	-1	1	-1	12.66	12.28	35.014
20	1	1	-1	-1	1	1	12.15	20.00	40.806
21	-1	-1	1	-1	1	-1	12.65	12.27	35.030
22	1	-1	1	-1	1	1	12.16	50.00	58.783
23	-1	1	1	-1	1	1	12.02	21.00	41.720
24	1	1	1	-1	1	-1	12.65	12.27	35.030
25	-1	-1	-1	1	1	-1	12.66	12.90	35.386
26	1	-1	-1	1	1	1	4.00	96.80	145.580
27	-1	1	-1	1	1	1	6.24	40.00	80.090
28	1	1	-1	1	1	-1	12.64	12.34	39.094
29	-1	-1	1	1	1	1	3.96	101.00	148.983
30	1	-1	1	1	1	-1	12.65	12.36	35.084
31	-1	1	1	1	1	-1	12.64	12.47	35.172
32	1	1	1	1	1	1	6.28	40.40	79.972
33	-1	0	0	0	0	0	7.11	46.18	76.934
34	1	0	0	0	0	0	7.26	44.77	75.071
35	0	-1	0	0	0	0	6.71	60.40	88.401
36	0	1	0	0	0	0	9.12	31.00	57.000
37	0	0	-1	0	0	0	7.24	45.15	75.432
38	0	0	1	0	0	0	7.18	45.30	76.000
39	0	0	0	-1	0	0	9.14	30.55	56.623
40	0	0	0	1	0	0	6.72	58.37	87.105
41	0	0	0	0	-1	0	7.24	45.50	75.642
42	0	0	0	0	1	0	7.13	46.39	77.000
43	0	0	0	0	0	-1	12.65	12.55	35.198
44	0	0	0	0	0	1	5.73	46.70	89.102
45	0	0	0	0	0	0	7.16	46.00	76.480

13. References

- Jalalifar, M.; Payam, A. F.; Nezhad, S. & Moghbeli, H. (2007). Dynamic Modeling and Simulation of an Induction Motor with Adaptive Backstepping Design of an Input-Output Feedback Linearization Controller in Series Hybrid Electric Vehicle, *Serbian Journal of Electrical Engineering*, Vol.4, No.2, (November 2007), pp. 119-132.
- Feller, A. & Stephan, M. (2009). Modeling Germany' s Transition to the EV until 2040 in System Dynamics, *Thesis*, Vallendar, July 27, 2009.
- Jaber, K.; Fakhfakh, A. & Neji, R. (2010). High Level Optimization of Electric Vehicle Power-Train with Doehlert Experimental Design, *11 th International Workshop on Symbolic and Numerical Methods, Modeling and Applications to Circuit Design, Sm2ACD 2010*, pp. 908-911, ISBN 978-1-4244-5090-9, Tunis-Gammarth, Tunisia, 2010.

- Jaber, K.; Ben Saleh, B.; Fakhfakh, A. & Neji, R. (2009). Modeling and Simulation of electrical vehicle in VHDL-AMS, *16 th IEEE International Conference on, Electronics, Circuits, and Systems, ICECS 2009*, pp. 908-911, ISBN 978-1-4244-5090-9, Yasmine Hammamet, Tunisia, 2009.
- McDermott, T. E.; Juchem, R. & Devarajan, D. (2006). Distribution Feeder and Induction Motor Modeling with VHDL-AMS. *2006 IEEE/PES T&D Conference and Exposition Proceedings*, 21-26 May 2006, Dallas.
- Fakhfakh, A., Feki, S., Hervé, Y., Walha, A. & Masmoudi, N., Virtual prototyping in power electronics using VHDL-AMS application to the direct torque control optimisation, *J. Appl. Sci.* 6, 2006, pp. 572-579.
- Sadeghi, S. & Mirsalim, M. (2010). Dynamic Modeling and Simulation of a Switched Reluctance Motor in a Series Hybrid Electric Vehicle, *International peer-reviewed scientific journal of Applied sciences*, Vol.7, No.1, (2010), pp. 51-71, ISBN 1785-8860.
- Dolecek, R.; Novak, J. & Cerny, O. (2009). Traction Permanent Magnet Synchronous Motor Torque Control with Flux Weakening. *Radioengineering*, VOL. 18, NO. 4, DECEMBER 2009.
- Ben Salah, B.; Moalla, A.; Tounsi, S.; Neji, R. & Sellami, F. (2008). Analytic Design of a Permanent Magnet Synchronous Motor Dedicated to EV Traction with a Wide Range of Speed Operation, *International Review of Electrical Engineering (I.R.E.E.)*, Vol.3, No.1, (2008), pp. 110-12.
- El Ati-Hellal, M.; Hellal, F.; Dachraoui, M. & Hedhili, A. (2009). Optimization of Sn determination in macroalgae by microwaves digestion and transversely heated furnace atomic absorption spectrometry analysis. *Canadian Journal of Analytical Sciences and Spectroscopy*, Vol.53, No.6, 2009.
- Elek, J.; Mangelings, D.; Joó, F. & V. Heyden, Y. (2004). Chemometric modelling of the catalytic Hydrogenation of bicarbonate to formate in aqueous Media, *Reaction Kinetics and Catalysis Letters*. Vol.83, No.2, (2004), pp. 321-328.
- Danion, A.; Bordes, C.; Disdier, J.; Gauvrit, J.Y.; Guillard, C.; Lantéri, P. & Renault, N. J. (2004). Optimization of a single TiO₂-coated optical fiber reactor using experimental design, *Elsevier, Journal of Photochemistry and Photobiology A: Chemistry*, Vol.168, No.3, (2004), pp. 161-167.
- El Hajjaji, S.; El Alaoui, M.; Simon, P.; Guenbour, A.; Ben Bachir, A.; Puech-Costes, E.; Maurette, M.-T. & Aries, L. (2005). Preparation and characterization of electrolytic alumina deposit on austenitic stainless steel. *Science and Technology of Advanced Materials*, Vol.6, No.5, (2005), pp. 519-524, ISSN 1468-6996.



Electric Vehicles - Modelling and Simulations

Edited by Dr. Seref Soylu

ISBN 978-953-307-477-1

Hard cover, 466 pages

Publisher InTech

Published online 12, September, 2011

Published in print edition September, 2011

In this book, modeling and simulation of electric vehicles and their components have been emphasized chapter by chapter with valuable contribution of many researchers who work on both technical and regulatory sides of the field. Mathematical models for electrical vehicles and their components were introduced and merged together to make this book a guide for industry, academia and policy makers.

How to reference

In order to correctly reference this scholarly work, feel free to copy and paste the following:

K. Jaber, A. Fakhfakh and R. Neji (2011). Modeling and Simulation of High Performance Electrical Vehicle Powertrains in VHDL-AMS, *Electric Vehicles - Modelling and Simulations*, Dr. Seref Soylu (Ed.), ISBN: 978-953-307-477-1, InTech, Available from: <http://www.intechopen.com/books/electric-vehicles-modelling-and-simulations/modeling-and-simulation-of-high-performance-electrical-vehicle-powertrains-in-vhdl-ams>

INTECH
open science | open minds

InTech Europe

University Campus STeP Ri
Slavka Krautzeka 83/A
51000 Rijeka, Croatia
Phone: +385 (51) 770 447
Fax: +385 (51) 686 166
www.intechopen.com

InTech China

Unit 405, Office Block, Hotel Equatorial Shanghai
No.65, Yan An Road (West), Shanghai, 200040, China
中国上海市延安西路65号上海国际贵都大饭店办公楼405单元
Phone: +86-21-62489820
Fax: +86-21-62489821

© 2011 The Author(s). Licensee IntechOpen. This chapter is distributed under the terms of the [Creative Commons Attribution-NonCommercial-ShareAlike-3.0 License](#), which permits use, distribution and reproduction for non-commercial purposes, provided the original is properly cited and derivative works building on this content are distributed under the same license.

IntechOpen

IntechOpen