

We are IntechOpen, the world's leading publisher of Open Access books Built by scientists, for scientists

4,800

Open access books available

122,000

International authors and editors

135M

Downloads

Our authors are among the

154

Countries delivered to

TOP 1%

most cited scientists

12.2%

Contributors from top 500 universities



WEB OF SCIENCE™

Selection of our books indexed in the Book Citation Index
in Web of Science™ Core Collection (BKCI)

Interested in publishing with us?
Contact book.department@intechopen.com

Numbers displayed above are based on latest data collected.
For more information visit www.intechopen.com



Endoscopic Ultrasound Elastography in Inflammatory Bowel Disease

Nadan Rustemovic, Irena Hrstic and Silvija Cukovic-Cavka
*School of Medicine Zagreb, University of Zagreb
Division of Gastroenterology and Hepatology, Zagreb
Croatia*

1. Introduction

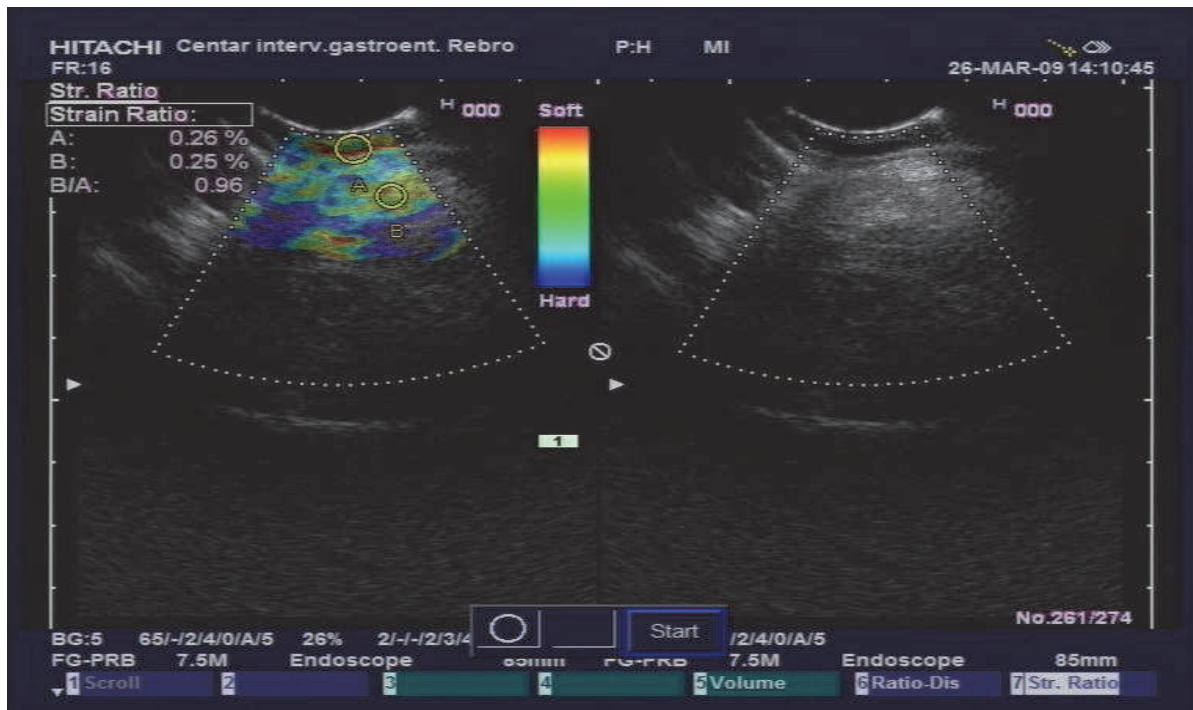
The diagnosis of inflammatory bowel disease (IBD) is based on clinical, endoscopic, radiologic and histologic criteria¹. There are two main IBD phenotypes - Crohn's disease (CD) and ulcerative colitis (UC). In some circumstances, especially when disease extension is restricted to the colon or in cases of acute severe pancolitis, recognition of specific IBD phenotype is very difficult. Recognition of the exact IBD phenotype is essential for guiding therapeutic decisions and detection of complications that warrant treatment.

Endoscopic examination is the mainstay in the diagnosis of IBD. Endoscopic appearance (distribution and shape of lesions) helps to differentiate CD from UC in most cases. Pathohistologic analysis confirms the elements of chronic inflammation but it is frequently not diagnostic. Patients with UC may have atypical histological features such as microscopic inflammation of the ileum, patchiness of inflammation and rectal sparing at the time of diagnosis prompting physicians to make the diagnosis of CD in UC cases. Other endoscopic findings such as cobble stoning, segmental colitis, ileal stenosis and ulceration, perianal disease and pathologically confirmed multiple granulomas in the small bowel or colon strongly suggest a diagnosis of CD.

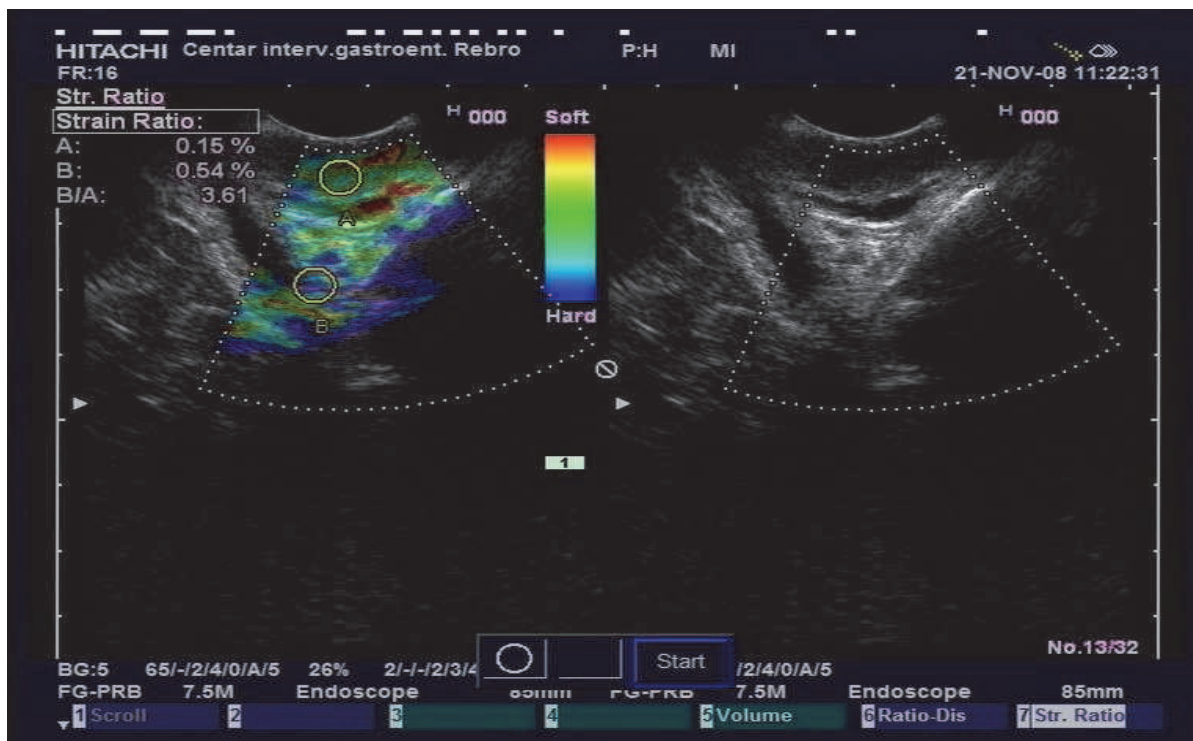
The progress in genetics, serological markers and imaging studies will lead to more reliable determination of exact IBD phenotype in the future². In the meantime, it is reasonable to explore other diagnostic options for better differentiation between different IBD phenotypes. We think that endoscopic ultrasound (EUS) elastography is a promising method to achieve this goal, picture 1 and 2. It is a new endoscopic procedure which can differentiate the stiffness of normal and pathological tissue by ultrasound. This finding is based on B-mode scanning during compressions³. There are some data on elastography applied on the GI tract, biliary tract, kidney, muscle, breast and the heart³⁻⁵.

Primary sclerosing cholangitis (PSC) is a chronic liver disease of unknown etiology, characterized by cholestasis, inflammation, fibrosis and stricture formation of the biliary ducts. The pathophysiology of PSC is a complex multistep process included unclear immunological mechanisms, genetic susceptibility and various defects of the biliary epithelial cells.

The disease is rare in the general population but is strongly associated with inflammatory bowel disease. The prevalence of IBD, predominantly ulcerative colitis, among PSC patients is approximately 70-90% while only 5% of patients with UC develop PSC. The percentage of



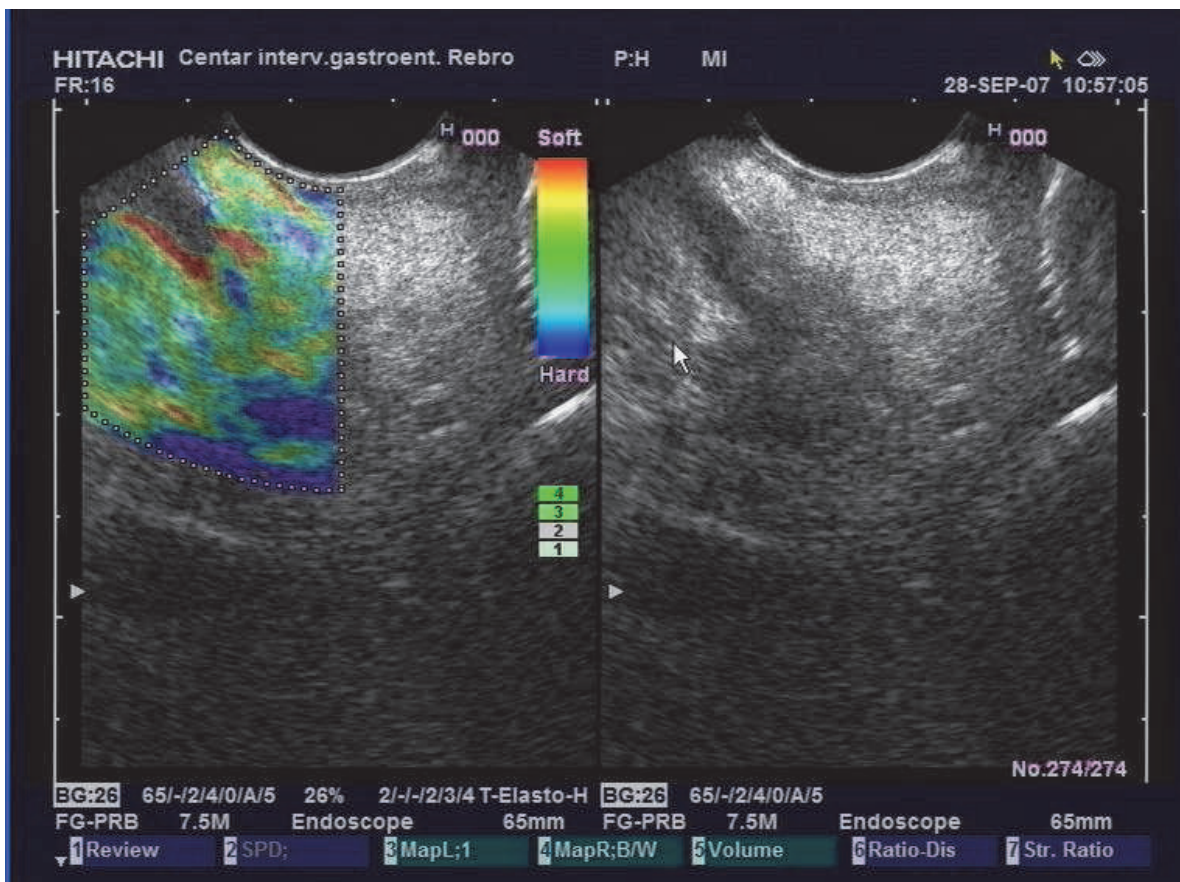
Picture 1. TRUS elastography in a UC patient



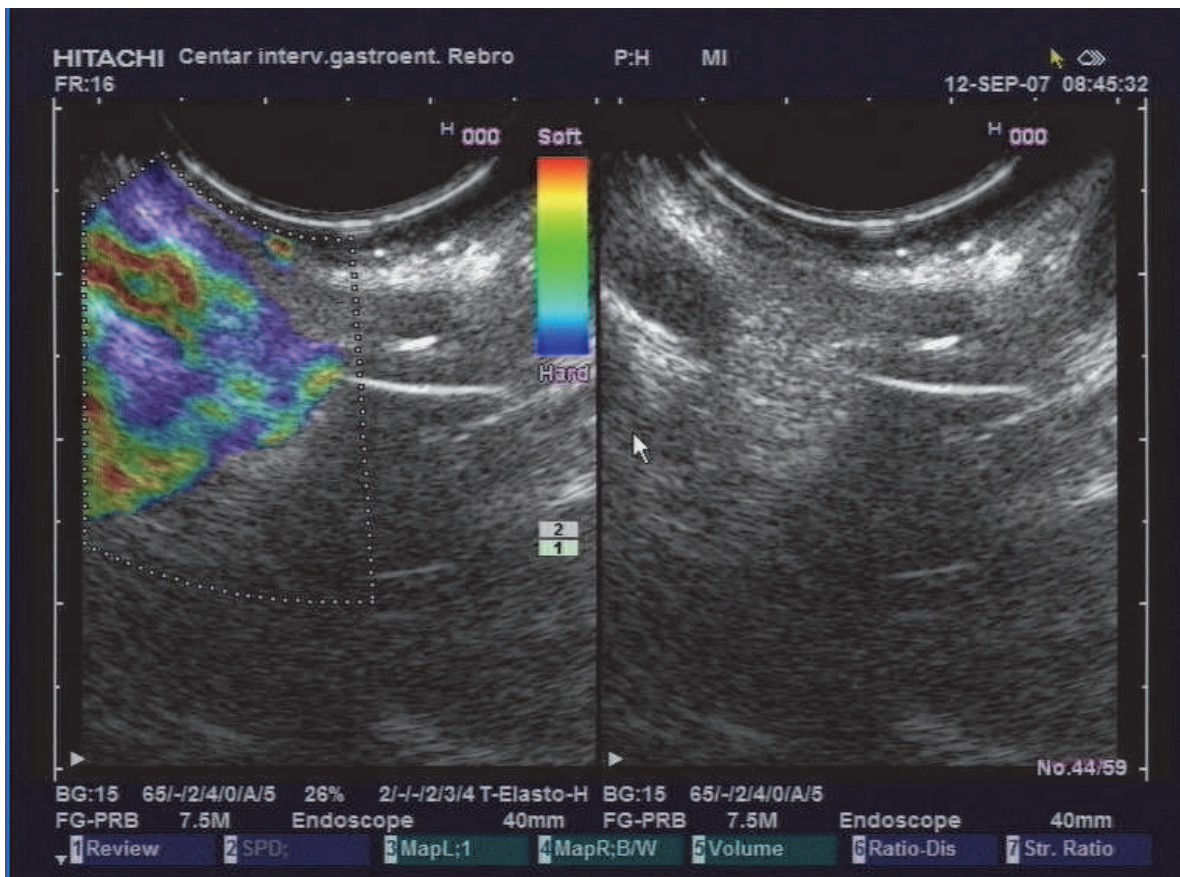
Picture 2. TRUS elastography in a CD patient

Crohn's disease patients affected by PSC is much smaller. Recently, it was recognized that PSC-IBD is a distinct IBD phenotype. Ulcerative colitis associated with PSC is usually mild, quiet, is associated with rectal sparing, more intensive right sided disease, and backwash ileitis and has a significant risk of developing pouchitis after colectomy.

In advanced cases symptoms include icterus, itch and lethargy but almost 45% of patients have no symptoms and increasing numbers of asymptomatic patients are being identified. Primary sclerosing cholangitis is generally aggressive disorder and can progress in cirrhosis. In that setting, liver transplantation is the only therapeutic option with cure potential because median survival without liver transplantation after diagnosis is approximately 12 years. PSC is associated with a 10%-15% lifetime risk of developing cholangiocellular carcinoma which often presents in advanced stage with a poor prognosis. Primary sclerosing cholangitis also has a risk of developing colorectal dysplasia and neoplasia in IBD. Treatment with high dose ursodeoxycholic acid has chemoprotective effects against potential neoplasia. Magnetic resonance cholangiography (MRC) and endoscopic retrograde cholangiography (ERC) are diagnostic procedures which confirm multifocal strictures and dilatation of biliary ducts, characteristic for PSC. Both procedures, ERC and MRC are comparable for diagnosing PSC but there are conflicting data regarding the role of ERCP in patients with PSC. It seems that elective ERCP has a modest risk of ERCP-related complications in patients with PSC. However, ERCP in severe ill IBD patients increases the probability of post procedure complications. Because of its noninvasive nature, MRCP may have advantages over invasive cholangiography when diagnosis is the main goal of the procedure. According to evident well-documented risk of malignant disease during the life course, early identification of PSC patients is very important for establishing adequate surveillance strategy. Elastography is a method which can differentiate the stiffness of normal and pathological tissue by ultrasound which is based on B-mode scanning during compressions, picture 3 and 4.



Picture 3. Normal bile duct.



Picture 4. PSC patient.

Regarding to the fact that imaging of ultrasound tissue elasticity is a way to distinct normal from abnormal tissue we analyzed the role of EUS elastography in assessing ductus choledochus properties in patients with and without PSC. EUS elastography has a potential to define tissue characteristics but specificity has to be improved⁴.

Based on the idea that imaging of ultrasound tissue elasticity is a way to differentiate tissue characteristics, we hypothesized that EUS elastography has the role in assessing the thickness of bowel wall in patients with IBD and in differentiation between types of colonic inflammation in Crohn's colitis and ulcerative colitis^{6,7} based on the fact that CD is a transmural disease and UC is limited to the mucosa and submucosa of the bowel wall.

2. Discussion

There are numerous papers in the current literature on the issue of EUS elastography. The method was initially inaugurated to distinguish benign from malignant pancreatic lesions^{6,9,10}. Although it cannot replace biopsy and histological confirmation of cancer, „virtual biopsy“ done by EUS elastography could provide good information of the consistency of the tissue of interest¹¹.

We hypothesized that „virtual biopsy“ technique might be implemented in differentiating colonic tissue between CD and UC^{4,12}. IBD phenotyping is clinically very important because of three specific reasons. Firstly, Crohn's colitis and UC have different risk of complications (fistulas, strictures, extraintestinal manifestations) that require specific therapeutic approach.

Secondly, regarding the drugs, there is a clear difference in the efficacy of mesalazine in active Crohn's colitis and ulcerative colitis^{15,16}. Delay of introduction of immunosuppressive agents in misdiagnosed patients with Crohn's colitis can be deleterious. Thirdly, accurate determination of disease phenotype is important in cases where surgical intervention becomes necessary, since continent proctocolectomy is inappropriate method in Crohn's colitis where pelvic reservoir in case of unrecognized CD gets complicated by fistulas, stenosis and pelvic sepsis¹⁷. To conclude, present serologic and genetic markers cannot always confirm the phenotypic diagnosis and predict the clinical course in IBD patients^{18,19,20}. EUS elastography could be, therefore, a new diagnostic option with the potential to recognize differences in the UC tissue and Crohn's colitis tissue.

In order to clearly define the differences between the colonic wall in CD and UC, our investigation was focused on the characteristics of the rectal wall and perirectal tissue, observed by the EUS elastography with SR calculation. Perirectal tissue in UC patients is supposed to be soft, without inflammation. In CD patients, „hard tissue“ reflects the transmural nature of inflammation. These qualitative and quantitative elastography data could lead to accurate differentiation of IBD phenotypes.

Our pilot study revealed a significant difference in rectal wall thickness between IBD group as a whole and controls which is in agreement with other reports from the literature^{21,22}. Interestingly, we also found a significant difference in rectal wall thickness between CD patients without rectal involvement and controls. The significance of this finding in our pilot study is unclear but it could suggest a possible predictive role of TRUS elastography in CD. Bearing in mind the fact that CD can involve any part of the GI tract, it would be interesting to identify such patients early in the course of the disease and follow them prospectively to see whether rectal involvement or perianal disease will develop. In UC patients, a significant difference in rectal wall thickness but not strain ratio was found between active UC patients and controls. This finding reflects the fact that inflammatory process in UC is confined to the mucosa and submucosa leading to the thickening of the rectal wall in acute inflammation but without changes in perirectal tissue as measured by strain ratio. A significant difference was detected in rectal wall thickness and strain ratio between CD and UC patient group reflecting the difference in pathogenetic mechanisms driving these diseases with CD being characterized by transmural inflammation as opposed to UC. Finally, we detected a significant difference in both rectal wall thickness and strain ratio between CD patients with rectal involvement and UC patients with active disease.

There was unfortunately significant difference in age between control group and IBD group. The results of TRUS elastography show that control group and UC group had comparable strain ratios, while CD group had statistically higher strain ratio. Based on the available literature, there are no significant changes in the rectal wall thickness with aging^{23,24}.

We believe that the results of our study confirm the potential usefulness of TRUS elastography in determining the exact phenotype of IBD. Currently, about 10% of patients with inflammation restricted to the colon can not be accurately classified using standard diagnostic techniques^{25,26}. More importantly, 4-6 % of patients with presumably UC undergoing proctocolectomy with ileoanal anastomosis and pelvic pouch formation turned out to have CD resulting in significant morbidity and high rate of pouch failure^{27,28}. Although we found a significant difference in rectal wall thickness and significant difference in strain ratio between CD patients with rectal involvement and active UC patients, our

study has a limitation due to a small number of patients included. There is a need for a prospective study with inclusion of a greater number of patients and for the construction of receiver operating characteristics (ROC) curve to definitely assess the value of TRUS elastography in IBD.

3. Conclusion

TRUS elastography with strain ratio calculation provides valuable information regarding the stiffness of the rectal and perirectal tissue and can help to differentiate CD from UC. Our study indicates that TRUS elastography could be one of the perspective and promising diagnostic tools in IBD. A prospective study on a large cohort of patient is necessary to consolidate and confirm the results and establish the role of TRUS in distinguishing Crohn's colitis and UC. In addition, one of the important benefits of EUS elastography in the long run could be the possibility of identifying individuals at risk of developing a transmural disease, thereby facilitating appropriate action for prevention of disease complications.

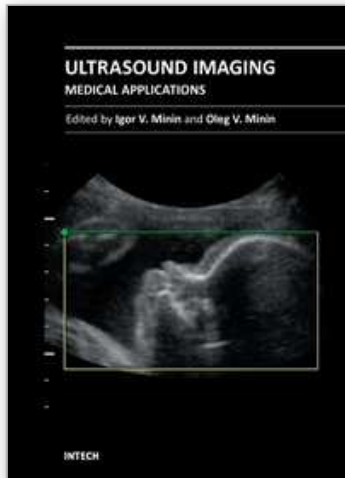
4. References

- [1] Nikolaus S, Schreiber S. Diagnostics of inflammatory bowel disease. *Gastroenterology* 2007;133:1670-1689.
- [2] North American Society for Pediatric Gastroenterology Hepatology, and Nutrition; Colitis Foundation of America, Bousvaros A, Antonioli DA Colletti RG, Dubinsky MC, Glickman JN, Gold BD, Griffiths AM, Jevon GP, Higuchi LM, Hyams JS, Kirschner BS, Kugathasan S, Baldassano RN, Russo PA. Differentiating ulcerative colitis from Crohn disease in children and young adults: report of a working group of the North American Society for Pediatric Gastroenterology, Hepatology, and Nutrition and the Crohn's and Colitis Foundation of America. *J Pediatr Gastroenterol Nutr* 2007;44:653-74.
- [3] Odegaard S, Nesje LB, Hoff DA, Gilja OH, Gregersen H. Morphology and motor function of the gastrointestinal tract examined with endosonography. *World J Gastroenterol* 2006;12:2858-2863.
- [4] Rustemovic N, Cukovic-Cavka S, Opacic M, Petroveckii M, Hrstic I, Radic D, Ostojic R, Pulanic R, Vucelic B. Endoscopic ultrasound elastography as a method for screening the patients with suspected primary sclerosing cholangitis. *Eur J Gastroenterol Hepatol* 2010;22:748-753.
- [5] Corpechot C, El Naggar A, Poujol-Robert A, Ziol M, Wendum D, Chazouilleres O, de Ledinghen V, Dhumeaux D, Marcellin P, Beaugrand M, Poupon R. Assessment of biliary fibrosis by transient elastography in patients with PBC and PSC. *Hepatology* 2006;43:1118-1124.
- [6] Giovannini M, Hookey LC, Bories E, Pesenti C, Monges G, Delpero JR. Endoscopic ultrasound elastography: the first step towards virtual biopsy? Preliminary results in 49 patients. *Endoscopy* 2006;38:344-348.
- [7] Saftoiu A, Vilman P. Endoscopic ultrasound elastography-- a new imaging technique for the visualization of tissue elasticity distribution. *J Gastrointest Liver Dis* 2006;15:161-165.
- [8] Baron JH, Connell AM, Lennard-Jones JE. Variation between observers in describing mucosal appearances in proctocolitis. *Br Med J* 1964;1:89-92.

- [9] Giovannini M, Thomas B, Erwan B, Christian P, Fabrice C, Benjamin E, Genevieve M, Paolo A, Pierre D, Robert Y, Walter S, Hanz S, Carl S, Christoph D, Pierre E, Jean-Luc VL, Jacques D, Peter V, Andrian S. Endoscopic ultrasound elastography for evaluation of lymph nodes and pancreatic masses: a multicenter study. *World J Gastroenterol*. 2009;15:1587-1593.
- [10] Saftoiu A, Vilmann P, Gorunescu F, Gheonea DI, Gorunescu M, Ciurea T, Popescu GL, Iordache A, Hassan H, Iordache S. Neural network analysis of dynamic sequences of EUS elastography used for the differential diagnosis of chronic pancreatitis and pancreatic cancer. *Gastrointest Endosc* 2008;68:1086-1094.
- [11] Gill KR, Wallace MB. EUS elastography for pancreatic mass lesions: between image and FNA? *Gastrointest Endosc* 2008;68:1095-1097.
- [12] Rustemovic N, Hrstic I, Opacic M, Ostojic R, Jakic-Razumovic J, Kvarantan M, Pulanic R, Vucelic B. EUS elastography in the diagnosis of focal liver lesions. *Gastrointest Endosc* 2007;66:823-824.
- [13] M'koma AE, Seeley EH, Washington MK, Schwartz DA, Muldoon RL, Herline AJ, Wise PE, Caprioli RM. Proteomic profiling of mucosal and submucosal colonic tissues yields protein signatures that differentiate the inflammatory colitides. *Inflamm Bowel Dis* 2010 Aug 30 [Epub ahead of print]
- [14] Vucelic B. Inflammatory bowel diseases: controversies in the use of diagnostic procedures. *Dig Dis* 2009;27(3):269-77.
- [15] Travis SP, Stange EF, Lémann M, Oresland T, Bemelman WA, Chowers Y, Colombel JF, D'Haens G, Ghosh S, Marteau P, Kruis W, Mortensen NJ, Penninckx F, Gassull M; for the European Crohn's and Colitis Organisation (ECCO). European evidence-based Consensus on the management of ulcerative colitis: Current management. *Journal of Crohn's and Colitis* 2008;2:24-62.
- [16] Dignass A, Van Assche G, Lindsay JO, Lémann M, Soderholm J, Colombel JF, Danese S, D'Hoore A, Gassull M, Gomollon F, Hommes DW, Michetti P, O'Morain C, Oresland T, Windsor A, Stange EF, Travis SP; European Crohn's and Colitis Organisation (ECCO). The second European evidence-based consensus on the diagnosis and management of Crohn's disease: Current management. *Journal of Crohn's and Colitis* 2010;4:28-62.
- [17] Shen B, Fazio VW, Remzi FH, Lashner BA. Clinical approach to diseases of ileal pouch-anal anastomosis. *Am J Gastroenterol* 2005;100(12):2796-807.
- [18] Arai R. Serologic markers: impact on early diagnosis and disease stratification in inflammatory bowel disease. *Postgrad Med* 2010;122(4):177-85.
- [19] Dotan I. New serologic markers for inflammatory bowel disease diagnosis. *Dig Dis* 2010;28(3):418-23.
- [20] Vermeire S, Van Assche G, Rutgeerts P. Role of genetics in prediction of disease course and response to therapy. *World J Gastroenterol* 2010;16(21):2609-15.
- [21] Rasmussen SN, Riis P. Rectal wall thickness measured by ultrasound in chronic inflammatory diseases of the colon. *Scand J Gastroenterol* 1985;20:109-114.
- [22] Lew RJ, Ginsberg GG. The role of endoscopic ultrasound in inflammatory bowel disease. *Gastrointest Endosc Clin N Am* 2002;12:561-571.
- [23] Huh CH, Bhutani MS, Farfan EB, Bolch WE. Individual variations in mucosa and total wall thickness in the stomach and rectum assessed via endoscopic ultrasound. *Physiol Meas* 2003;24:N15-22.

- [24] Karahan OI, Dodd GD 3rd, Chintapalli KN, Rhim H, Chopra S. Gastrointestinal wall thickening in patients with cirrhosis: frequency and patterns at contrast-enhanced CT. *Radiology* 2000;215:103-107.
- [25] Vind I, Riis L, Jess T, Knudsen E, Pedersen N, Elkjaer M, Bak Andersen I, Wewer V, Norregaard P, Moesgaard F, Bendtsen F, Munkholm P, DCCD study group. Increasing incidences of inflammatory bowel disease and decreasing surgery rates in Copenhagen City and County, 2003-2005: a population-based study from Danish Crohn colitis database. *Am J Gastroenterol* 2006;101:1274-1282 .
- [26] Stewenius J, Adnerhill I, Ekelund G, Floren CH, Fork FT, Janzon L, Lindström C, Mars I, Nyman M, Rosengren JE. Ulcerative colitis and indeterminate colitis in the city of Malmo, Sweden. A 25-year incidence study. *Scand J Gastroenterol* 1995;30:38-43.
- [27] Melton GB, Fazio VW, Kiran RP, He J, Lavery IC, Shen B, Achkar JP, Church JM, Remzi FH. Long-term outcomes with ileal pouch-anal anastomosis and Crohn's disease: pouch retention and implications of delayed diagnosis. *Ann Surg* 2008;4:608-616.
- [28] Braveman JM, Schoetz DJ Jr., Marcello PW, Roberts PL, Collier JA, Murray JJ, Rusin LC. The fate of the ileal pouch in patients developing Crohn's disease. *Dis Colon Rectum* 2004;47:1613-1619.

IntechOpen



Ultrasound Imaging - Medical Applications

Edited by Prof. Oleg Minin

ISBN 978-953-307-279-1

Hard cover, 330 pages

Publisher InTech

Published online 23, August, 2011

Published in print edition August, 2011

This book provides an overview of ultrafast ultrasound imaging, 3D high-quality ultrasonic imaging, correction of phase aberrations in medical ultrasound images, etc. Several interesting medical and clinical applications areas are also discussed in the book, like the use of three dimensional ultrasound imaging in evaluation of Asherman's syndrome, the role of 3D ultrasound in assessment of endometrial receptivity and follicular vascularity to predict the quality oocyte, ultrasound imaging in vascular diseases and the fetal palate, clinical application of ultrasound molecular imaging, Doppler abdominal ultrasound in small animals and so on.

How to reference

In order to correctly reference this scholarly work, feel free to copy and paste the following:

Nadan Rustemovic, Irena Hrstic and Silvija Cukovic-Cavka (2011). Endoscopic Ultrasound Elastography in Inflammatory Bowel Disease, *Ultrasound Imaging - Medical Applications*, Prof. Oleg Minin (Ed.), ISBN: 978-953-307-279-1, InTech, Available from: <http://www.intechopen.com/books/ultrasound-imaging-medical-applications/endoscopic-ultrasound-elastography-in-inflammatory-bowel-disease>

INTECH

open science | open minds

InTech Europe

University Campus STeP Ri
Slavka Krautzeka 83/A
51000 Rijeka, Croatia
Phone: +385 (51) 770 447
Fax: +385 (51) 686 166
www.intechopen.com

InTech China

Unit 405, Office Block, Hotel Equatorial Shanghai
No.65, Yan An Road (West), Shanghai, 200040, China
中国上海市延安西路65号上海国际贵都大饭店办公楼405单元
Phone: +86-21-62489820
Fax: +86-21-62489821

© 2011 The Author(s). Licensee IntechOpen. This chapter is distributed under the terms of the [Creative Commons Attribution-NonCommercial-ShareAlike-3.0 License](#), which permits use, distribution and reproduction for non-commercial purposes, provided the original is properly cited and derivative works building on this content are distributed under the same license.

IntechOpen

IntechOpen