

# We are IntechOpen, the world's leading publisher of Open Access books Built by scientists, for scientists

4,800

Open access books available

122,000

International authors and editors

135M

Downloads

Our authors are among the

154

Countries delivered to

TOP 1%

most cited scientists

12.2%

Contributors from top 500 universities



WEB OF SCIENCE™

Selection of our books indexed in the Book Citation Index  
in Web of Science™ Core Collection (BKCI)

Interested in publishing with us?  
Contact [book.department@intechopen.com](mailto:book.department@intechopen.com)

Numbers displayed above are based on latest data collected.  
For more information visit [www.intechopen.com](http://www.intechopen.com)



# Sensor Enhancement Using Nanomaterials to Detect Pharmaceutical Residue: Nanointegration Using Phenol as Environmental Pollutant

Chandra S. Padidem<sup>1</sup>, Sajid Bashir<sup>2</sup> and Jingbo Liu<sup>1,3</sup>

<sup>1</sup>*Nanotech and Cleantech Group, Texas A&M University-Kingsville,*

<sup>2</sup>*Chemical Biological Group, Texas A&M University-Kingsville*

<sup>3</sup>*Department of Chemistry, Texas A&M University  
United States of America*

## 1. Introduction

Phenol is an aromatic compound, with a wide variety of uses both medical and industrial. During its production, emissions of even low amounts have been demonstrated to be toxic at submicrogram/liter levels. Phenol is also a good model compound to assess environmental impact of its emission particularly in wastewater. However, the current approach, methodologies and application described herein can also be applied to other organic environmental / pharmaceutical pollutants. Phenol has been removed from wastewater through a number of different approaches and monitored using spectroscopy and chromatography. In the field the most common method is detection through electrochemical or colorimetric sensors, which are described in this study.

### 1.1 Source and properties of phenol

Phenol is an organic compound, which can be generated from petroleum by-products like tar (reviewed by Gerberding, 2002) or from the metabolism of benzene or organic matter containing appropriate motifs (Martus *et al.*, 2003). Phenol also occurs in thyme oil, oil of wintergreen and methyl salicylate and has been generated as a by-product in various industrial processes, such as coke production, in the manufacture of wood preservatives, fungicides and as a synthetic precursor in the synthesis of organic compounds used in pesticide, dye and pharmaceutical synthesis (Akai *et al.*, 1998) and in disinfection (Chick, 1908). In the production of epoxy resins and nylon, phenol is required for synthesis of caprolactam and bisphenol A, which are carcinogenic intermediate molecules (Jones, 1981). The disinfectant properties of phenol have applications in over-the-counter medicines such as mouthwash, disinfectants, or fungicides, which have traces of phenol, and in throat lozenges. The approximate usage of phenol varies by industry, but is in the millions of kilograms per year range (Gilman *et al.*, 1988). Phenols (or phenolic resins) if directly released into environment (air, soil or water) are toxic (reviewed by Gogate, 2008). The release is not common but can occur as a result of its widespread use, for example in the

automotive, construction, plywood, and appliance industries (Zhang *et al.*, 2006) and in the manufacture of plastics as a plasticizer or antioxidant (reviewed by Xanthos, 1969). The type and degree of substitution would dictate the stability and reactivity of the phenol derivative (reviewed by Babich & Davis, 1981; Salkinoja-Salone, 1981).

The ease of removing hydrogen ion at the hydroxy-position can give information on acidity/basicity, as a general rule more electronegative groups such as nitro led to stronger acids than the parent alone (reviewed by Kozak *et al.*, 1979). Once phenol is synthesized, it can be converted to the end-product through the appropriate synthetic routes, for example if chlorophenol or trichlorophenol isomers are required, they can be synthesized through the Boehringer Process with iron salt as the catalyst, under low, similarly for the synthesis of pentachlorobenzene, or chlorobenzene, or hexachlorobenzene isomers, the appropriate precursor is hydrolyzed under alkaline conditions (reviewed by Buehler & Pearson, 1970; McKillop *et al.*, 1974), noting that phenol can also be readily oxidized.

### 1.2 Toxicological effects of phenol

Phenol can induce skin cancer as documented in dermal studies of cutaneous application of phenol and can act as a tumor promoter or a weak skin carcinogen in mice (USDA, 1980a; Kreijl & Slooff, 1983). Teratogenic effects of phenol have also been reported in animal studies. With nasal and cutaneous exposure, the results are irritation of the skin, eyes and mucus membranes. Cutaneous application of phenol results in dermal inflammation and necrosis. Dermatological disorders including discoloration of the skin (Deichmann & Keplinger, 1962; reviewed by Bruce *et al.*, 1987). Different derivatives have different toxicities (with the toxicity being related to acidity and persistence being related to degree of solubility in fats and lipids), with nitrophenol being the most toxic followed by chlorophenols which in turn are more toxic than phenol alone, however, chlorophenols are more difficult to biodegrade, therefore pose more of a problem than phenol in terms of toxicity and persistence (reviewed by Crosby, 1982; Folke, 1985).

### 1.3 Sampling and cleanup

Procedures have been developed to monitor the different species of phenol generated such that they are below toxic levels in a variety of matrices (Fichholz *et al.*, 1965; West *et al.*, 1966; Chau & Coburn, 1974). Generally, the sample which is thought to contain phenol has its pH changed to non-neutral pH values to minimize microbial degradation and stored in brown glass vials to decrease the loss to adsorption and photodecomposition, respectively (Afghan *et al.*, 1974). The extraction of phenol from the matrices as varied as water, fish, air, soil or plants has relied on organic solvents such as petroleum ether, benzene, or chloroform for polysubstituted phenols and butyl acetate or isomayl acetate for (monosubstituted) phenol (Taras *et al.*, 1971; Afghan *et al.*, 1974; Greminger *et al.*, 1982). Liquid-liquid partitioning can be used to separate phenol from other organic compounds found in the matrices, or column chromatography, silica gel chromatography have been used to achieve separation (reviewed by Rao *et al.*, 1978; EPA 1980; USDA 1980b; Renberg & Björseth, 1983; reviewed by Busca *et al.*, 2008).

### 1.4 Sensor overview

With the advancement of science and technology sensor can change the data into a digital reading or some other form for easy perception of results (reviewed by Karube *et al.*, 1995

and Rogers, 1995). Actual sensor design and manufacturing for environmental (reviewed by Hart & Wring, 1997) monitoring or sensor architecture (reviewed by Lynch & Loh, 2006) for monitoring and reporting are beyond the scope of this chapter. The generic approaches and applications will be discussed with emphasis on environmental monitoring or chemical detection particularly for phenol. Since the development of a blood sugar monitoring sensor, the miniaturization of sensors has been advanced dramatically in detection of other molecules of interest (Kadish & Hall, 1965). In environmental and medical applications sensors have been used in the monitoring of phenol, the widespread use of sensors is due to their small size, operational suitability (e.g. good linear range, selectivity and sensitivity for the target molecule), robustness, ease of operation and the ability for micro-fabrication and auto-control (reviewed by Wang, 1997; Yu *et al.*, 2003).

Sensors can be fabricated under ambient conditions with excellent pressure and temperature stability coupled to negligible expansion or swelling in protic / aprotic solutions (i.e. chemical inertness, Yu *et al.*, 2003). These favourable operation parameters have led to their widespread adaptability for various applications. Most methods of analysis require site identification, collection, storage and shipment of the samples for further processing at the laboratory equipped to do the chemical / biological analysis. Poor handling during this sample acquisition process can lead to high statistical variability of the measured values (Chau & Coburn, 1974; Klein, 1988; Shammala, 1999). Due to their size and portability, sensors have been evaluated more in instant field testing of analytes as opposed to lengthy laboratory testing of analytes (reviewed by Rodriguez-Mozaz *et al.*, 2005) where a quick determination is required. Sensors may be in the form of microchips, electrodes or thin films. The most common methods for sensor fabrication are sensors with amperometric detection (Hanrahan *et al.*, 2004), although gas-chromatography and colorimetric sensors have also been used (Saby *et al.*, 1997). The colorimetric method relies on the formation of a colored complex either as the final product or as stable intermediate (Martin, 1949). Common colorimetric tests include use of tetracyanoethylene or tetracyanoethylene ((NC)<sub>2</sub>C=C(CN)<sub>2</sub>, Smith *et al.*, 1963a), diamine ((C<sub>2</sub>H<sub>5</sub>)<sub>2</sub>NC<sub>6</sub>H<sub>4</sub>NH<sub>2</sub>, Houghton & Pelly, 1937; Eksperiandova *et al.*, 1999) leading to the formation of indophenol (Ettinger & Ruchhoft, 1948; Smith *et al.*, 1963b; Gupta, 2006), which is measured through titration extracted with carbon tetrachloride as summarised by Hill (Hill & Herndon, 1952; Benvenue & Beckman, 1967; Regnier & Watson, 1971; NRCC-18578, 1982). In addition, derivatization with 4-aminoantipyrine (C<sub>11</sub>H<sub>13</sub>N<sub>3</sub>O) followed by ultraviolet (UV) spectrophotometric / spectrofluorometric detection, usually at 254 (or 280) nm can be used with a limit of detection (LOD) in the sub microgram / liter range (Lykken *et al.*, 1946; Dannis, 1951; Afghan *et al.*, 1974; Norwitz *et al.*, 1979; Realini, 1980; Farino *et al.*, 1981). Other methods utilize gas chromatography (Renberg, 1981; Giger & Schaffner, 1983) coupled with flame ionization detection (FID) for derivatized phenol (e.g. acetylated, or heptafluorobutyl, or pentafluorobenzyl ether phenol) to increase volatility of phenol to enable GC-based analysis, (Corcia, 1973; Renberg, 1982, 1983) or liquid chromatography (LC) methods such as reverse phase (RP) with UV or electrochemical (EC) detection (ECD, Bhatia, 1973; Churatek & Houpek, 1975; Bidlingmeyer, 1980; Ogan & Katz, 1980). The RPLC method can give ultrahigh sensitivity in the parts-per-billion (ppb) range (Hoffsommer *et al.*, 1980; Wegman & Wammes, 1983; Lee *et al.*, 1984a, 1984b). Other chromatographic methods (Armentrout *et al.*, 1979) include ion-pair chromatography (Tomlinson *et al.*, 1978) followed by RP separation have been reported with a LOD in the (< 0.1 - 30) microgram / liter range (Goulden *et al.*, 1973; Chau & Coburn, 1974; Kuehl & Dougherty, 1980; Mathew & Elzerman, 1981; Ribick *et al.*, 1981; Lindinger *et al.*, 1998).

Lastly, chemical / electron ionization and fast atom bombardment in positive-ion mode, have been applied in the analysis of phenol (reviewed by Lisk, 1970; and C. Staples *et al.*, 1998; Santana *et al.*, 2009). Over the last decade, there has been a shift from analysis by analytical biochemists to analysis by technicians. This has necessitated a re-design of sensors to be portable, rugged, with low manufacturing costs, the desired selectivity and sensitivity, and ease of interpretation of results. Colorimetric-based readouts (Folin & Denis, 1915; Rakestraw, 1923; Box, 1983) have inherent advantages over other EC sensors, in terms of cost, robustness and ease of operation. The sensor must consist of a : (i) trapping element in which the target molecule is selectively bound and held in place; and (ii) sensing or detecting element, which interacts with the target molecule leading to a quantified chemical reaction, as the output parameter for detection and quantification. In this regards, a colorimetric sensor based on Gibbs reagent as the sensing element and cyclodextrin and / or gold nanoparticles as the trapping elements were designed with the aim of detecting organic pollutants exemplified by phenol.

#### 1.4.1 Gibbs-based sensor

Dihalogen-substituted quinonechloroimides (such as 2,6-dichloroquinone-4-chloroimide and 2,6-dibromoquinone-4-chloroimide, also known as Gibbs reagent ) give the most stable indophenols. The test employing the 2,6-dichloroquinone-4-chloroimide, has a sensitivity of at least 1 part of phenol in  $20 \times 10^6$ . The indophenol formation can be measured quantitatively by means of the spectrophotometer. The maximum absorption for 2,6-dichloroquinoneimine was 280.5 nm with a change at 275 nm (at pH 8.5, Svobodová *et al.*, 1977a) where indophenol formation was measured at 610 nm in the spectrophotometer. Subsequently, it was proposed to use 2,6-dichloroquinone-4-chloroimide as the standard Gibbs' reagent for the detection and determination of uric acid (Raybin, 1945). The quinonechloroimides do not react with all phenols and the primary requisite is that the position para to the hydroxyl must be unsubstituted (Gibbs, 1927a, 1927b). Different indophenol formations require different pH, but all are formed in the alkaline region (Gibbs, 1927a). Phenols substituted in the 2- and 6-positions (2,6-di-tertbutyl- and 2-tert-butyl-6-methyl-4-methoxyphenol) tended to give a typical magenta color (absorption region 565-575 nm, Dacrel, 1971). For photometric purposes, acetone, dioxan, methanol and ethanol are required for preparation of stock solutions. Sensitivity is hampered by reagent instability, which can be minimised through careful preparation against changes in temperature, light and moisture (Svobodová & Gasparič, 1971; Svobodová *et al.*, 1977a, 1977b).

#### 1.4.2 Gold modified Gibbs sensor

Nanoparticles (NPs) as the sensing element can be synthesized in solution and operated at ambient temperature. Gold NPs (Au-NPs) provide facile route toward synthesis, precise control of formulation and low cost of synthesis and application (Kim *et al.*, 2005). Noble metals have desirable properties for use in sensors such as chemical resistance to oxidation, chemical inertness in the bulk form, which is lost in the nanoform, leading to enhanced catalytically. These properties are due to the nanosurfaces intrinsic properties, and ultrahigh surface area, leading to excellent electrical response of the sensor at the nanoscale (Kim *et al.*; 2005).

An additional advantage in consideration of Au is its optical properties, for example, surface plasmon resonance (SPR) of Au-NPs has widely been used in sensing bio-molecules (Nath &

Chilkoti, 2002; reviewed by Aslan *et al.*, 2004). Au-NPs display wide variation in optical properties including variation in the dielectric in part due to the nanoscale size and in part due to the microenvironment (e.g. solvent) via surface plasmon resonance (SPR, Liz-Marzan, 2004; Hornyak *et al.*, 1997; reviewed by Link & El-Sayed, 2003) effects. This property can enable the fabrication of tuneable colorimetric sensor for detection of different environment pollutants, such as phenol which was used in our study. These fabricated Au-NPs / Au-NRs can therefore have wavelengths which vary at least by an order of magnitude from infra-red to visible spectrum of light. Likewise, Au nanoclusters can be fabricated with precise size and absorption / emission properties ('tunability') through formulation of surfaces of defined size (Aslan *et al.*, 2004). This tunability can be achieved in the fabrication process through judicious use of solvents, dispersing agents and synthesis parameters to finely control surface size, layering and dimensionality. One application of Au-NP-based sensors is detection of alterations in SPR, due to changes in the local environment (via changes in the dielectric constant). The measured changes may be due to Au-NP-analyte (e.g. phenol) interactions due to surface adsorption, or nanocluster formation or aggregation due to analyte effects (J. Liu & Lu, 2004). The most common approach to tap into SPR changes is through functionalization of the Au-NPs, for example, through incorporation of gum Arabic (GA) or other long chain macromolecules, which have detergent-like properties aiding in Au-NP size selection (Bashir & Liu, 2009) in aqueous-based devices. Au-NPs increase the specificity of sensor by binding of the sensing element to the sol-gel and increasing electron tunneling to Gibbs reagent (as detecting agent) for detection of phenol.

#### 1.4.3 Cyclodextrin as trapping agent

Cyclodextrins (CDs) are oligomers of D-glucose, which are linked through the 1→4 position. The oligomers can have from six ( $\alpha$ -CD) to eight ( $\gamma$ -CD) residues linked end-to-end in cyclic fashion. In this manner, CDs can form 3D like 'bucket' structures, which can facilitate CD (host) and analyte (guest) interactions, including formation of non-covalent complexes, particularly with alkali metal cations (Kutner & Doblhofer, 1992; Bashir *et al.*, 2003). These host-guest interactions can be exploited towards construction of trapping elements with in-built selectivity (due to ring size) for certain sensor applications, with the most common CD being  $\beta$ -CD. CDs exhibit two distinct 'faces' including an 'inner' and 'outer' face. The primary face has a narrower entrance than the secondary face with the narrower/wider sides being associated with primary/secondary hydroxyl groups, respectively. This size difference can thus be exploited in group modification or decoration.

Decoration and end-capping of CDs, particularly  $\beta$ -CDs has led to their application as selective agents in chromatography, as tagging agents in pharmaceuticals and also as host-guest probes (reviewed by Gattuso *et al.*, 1998, and Khan *et al.*, 1998, and Engeldinger *et al.*, 2003) in biomedicine. The degree of bonding or interaction between the host-guest is determined by hydrophobicity and van der Waals forces. CDs bind to the Gibbs reagent by intermolecular forces, such as dipole-dipole forces. Other factors include expulsion of water molecules from the core, hydrophobic interactions, van der Waals forces and hydrogen bonding (Salústio *et al.*, 2009). As such CDs have been used as separation surfaces or chromatography media for the separation of drugs, or as encapsulation matrices for enzymes or drugs (Sahoo *et al.*, 2008) for drug interaction, catalytic reactions to occur under normal or photoactive conditions (reviewed by Mallick *et al.*, 2007) in addition to enhancement of transport of molecules such as phenol in animal models.

### 1.5 Evaluation of sensor performance

Sensors should be a part of the environmental monitoring system and can provide early-warning about build-up or release of pollutants or molecules of interest. Colorimetric sensors meet the pre-requisites (of reliability and dynamic response), in addition to appropriate operational parameters and as such have been utilised in studies for evaluation of xenobiotic / environmental pollutants or chemicals of interest (Smyth *et al.*, 2008) in which a change in color upon interaction with the target substrate allow for substrate determination, either quantitative or qualitative. In our study, indophenol, (the colored complex), is formed from phenol reacting with 2,6-dichloro-*p*-quinone-4-chloroimide or 2,6-dibromo-*p*-quinone-4-chloroimide. The sensor is evaluated for its performance, the detection of phenol, reproducibility and stability at different known concentrations of this analyte.

### 1.6 Nanotechnology: definition, fabrication and characterization techniques

The design of an optimal sensor necessitates material characterization at the nanoscale level, using nanotechnological tools and resources. Nanotechnology revolves around fabrication of materials of dimensions of less than 100 nm which are used in designing, constructing and utilizing functional structures. Nanomaterials are synthesized or fabricated by top-down and bottom-up processes. Common top-down processes of operation are to grind materials into extremely fine powder, or via ball milling and lithographic processes. Bottom-up methods of fabricating nanomaterials commonly employed include epitaxial deposition of thin films and sol-gel fabrication. In this study, a bottom-up approach was used to prepare the sensing element.

Most commonly used instruments for characterization of nanomaterials are 'nano' microscopy related techniques, such as scanning electron microscopy (SEM), transmission electron microscopy (TEM), atomic force microscopy (AFM) or spectroscopy based techniques, such as X-ray powered diffraction (XRD), single-crystal X-ray diffraction (SCD), or energy dispersive spectroscopy (EDX). With the advancement of technology, electron microscopy has become primary tool for characterization of nanomaterials. In this study, all of the above except SCD were used for nanostructural analyses of the phenol sensor.

Another important feature to evaluate the sensing element stability is measurement of the electrokinetic potential (also known as zeta potential,  $\zeta$ ).  $\zeta$  is the difference in potential between the fluid in the stationary and continuous phase respectively attached to the dispersion phase.  $\zeta$  arises due to dissociation of atoms capable of producing ions, such as an electrolyte on the surface of the nanoparticle and solvent ions at the surface. The net change in charge on the nanoparticle will influence the distribution of ions in the local microenvironment, for examples by either increasing the concentration of anions (if the surface is positive) near the nanoparticle surface.

As a consequence of this counter charge (between the ions) an electrical double layer is created near the nanoparticle surface micro-environment or interface.  $\zeta$  exists for colloidal systems and indicates the stability of the colloidal suspension. Lower  $\zeta$  values, indicate that the attractive cohesive forces dominate, leading to aggregation, whereas higher ( $\pm$ ) values indicate the contrary, leading to dispersion and nanoparticle stabilization. Colloid suspensions with  $\zeta$  values from  $\pm 30$  to  $\pm 40$  (mV) are moderately stable with values of  $\pm 40$  to  $\pm 60$  (mV) exhibiting good stability. Electrophoretic mobility is often used as a starting pointing in theoretical calculations to compare with  $\zeta$  values, which in turn are based upon electroacoustics (Lyklema, 1995) measurements. Au-NPs (of diameter of 30-40 nm) are suspended as a dispersion phase and the measurement of  $\zeta$  is a valuable method of determining the stability of sol for the preparation of sensor.

## 2. Experimental approach

In this chapter, we are designing a nanoscaled sensor to overcome the shortcomings of phenol sensor designs, limited detection resolution, and slow response time. The overall experiments are carried out for the construction of phenol film sensor derived by sol method. The structural characterization of the phenol sensor is by optical and nanomicroscopy and colorimetric evaluation of sensor performance. Importantly, as previously indicated in the introduction, this approach can also be applied to the detection of other organic environmental / pharmaceutical pollutants, along the same principles as described in the following sections.

All chemicals used are of analytical grade and were obtained from various vendors as listed. 2,6-dichloroquinomine-4-chlorimide (Fluka, St Louis, MO), gold (III) chloride trihydrate (Sigma-Aldrich, St Louis, MO),  $\alpha$ -cyclodextrin hydrate (Alfa Aesar, Ward Hill, MA), L-ascorbic acid (Fisher, Thermo scientific, Pittsburgh, PA), gum Arabica (M.P. Biomedicals, Morgan Irvine, CA) were used without modification.

$\alpha$ -CD interacts with the Gibbs reagents as the trapping element through a color change. This color change is due to transfer of electrons from the Gibbs molecule to the phenol molecules. In this research, the Gibbs reagent (also known as the 'detecting/sensing agent') and CD (as the 'trapping agent') are used to detect for phenol. The detecting agent coupled to the trapping agent, which is embedded in a sol-type matrix. Other biological sensing elements (such as gold with trapping element such as: cyclodextrins (Janshoff *et al.*, 2000), laccase, (Y. Liu *et al.*, 2006), dendrimers, (Manna *et al.*, 2001) gold-nanotubes-chitosan, (Y. Liu *et al.*, 2006) or C<sub>60</sub>-sugar composites (reviewed by Pumera *et al.*, 2007) with gold nanoparticles for building a biosensor can also be utilized. In our case, we utilized cyclodextrin-Gibbs as the trapping/detecting elements with Au-NPs. Separately, Au-NPs and Gibbs (with Arabica Gum as the dispersing agent to minimise aggregation of the Au-NPs) towards enhanced detection of phenol was also used in our specific case, although other general approaches (e.g. Au-laccase-Gibbs) summarized above could have also been used.

### 2.1 Experimental procedure

Colorimetric studies have been implemented toward study of agents (Lante *et al.*, 2000), as potential detecting or sensing elements related to alterations in color upon interaction with the target molecule. In our study, indophenol complex was formed from phenol reacting with Gibbs reagent. The sensor was involved in a number of fabrication parameters (described in § 2.2), which were extensively characterized using microscopy to determine the nanostructure of the catalytic surface (described in § 2.3) and dynamic light scattering to determine electrokinetic behavior of the colloidal suspensions (described in § 2.4). Once the sensor was optimized in terms of limit of detection (LOD) of phenol through a trial-and-error approach, its performance was evaluated through colorimetric measurement of relative optical densities (described in § 2.5). The workflow of the nanofabrication and performance evaluation of phenol sensor is summarized in Figure 1A.

### 2.2 Fabrication of sensor

The experimental workflow for construction of phenol sensor is shown in Figure 1B. Briefly, the phenol sensor was created by dissolving different concentrations of Gibbs reagent in the mixture of water and methanol (1:1 volume ratio, solution A). Solution A was mixed continuously with a magnetic stirrer for 30 min. Gum Arabica (GA, as a surfactant) was added (2 % by mass) to solution A to improve the uniformity of the resulting film and to



control the particle size of the sensing elements. To solution A, an aqueous solution of gold (III) chloride trihydrate ( $\text{HAuCl}_4 \cdot 3\text{H}_2\text{O}$ ) and separately an aqueous solution of ascorbic acid ( $\text{C}_6\text{H}_8\text{O}_6$ ) at different concentrations were simultaneously injected. The molar ratio of  $\text{Au}^{3+}$  to ascorbic acid in solution A was controlled at 1:2 to produce 16 formulations with Gibbs concentration ranging from 0.025-0.25  $\mu\text{M}$ , phenol concentration from 6-50 Vol %, Au-NPs concentration from 0.01-0.04 M to form the gold modified Gibbs hybrid (GGH) composite to extend the detection range of the sensor (*cf.* Table 1, § 3.6). The precursor sols were heated between 60 and 80 (C for 2 hrs to increase the sol viscosity, through evaporation of methanol.

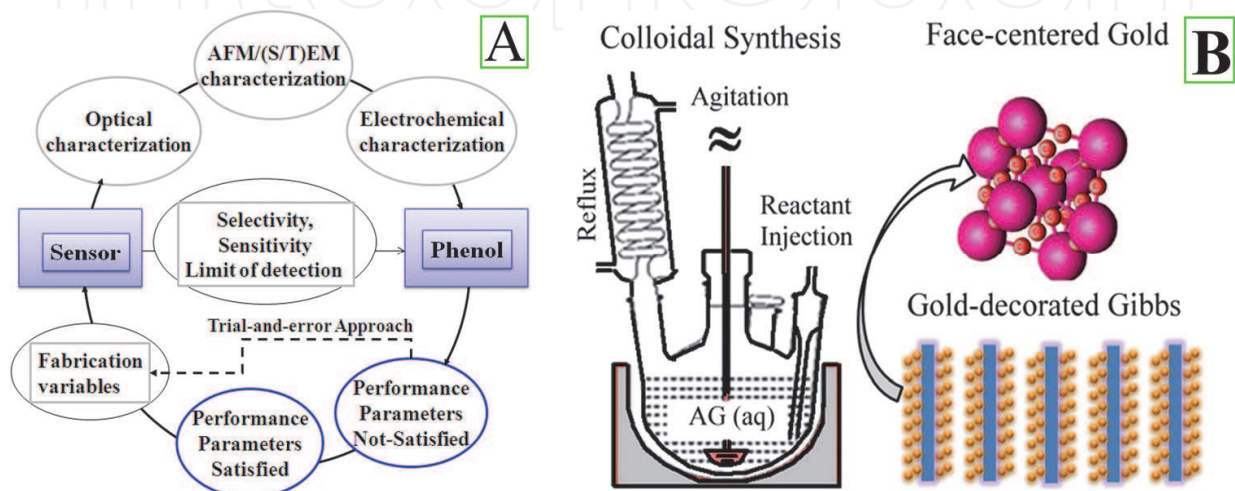


Fig. 1. The workflow employed in the fabrication and characterization of the sensor (A) and schematic of the synthesis procedure and likely nanostructure (B).

### 2.3 Structural characterization

Advanced instrumentation techniques provide higher magnification for analyzing elemental composition and particle size distribution of the sensing elements and structural changes with addition of phenol. A phase contrast optical microscope (M 021, Olympus, Olympus America Incorporation, Irving, TX) was used to determine the texture of the GGH sensor and textural changes on interactions of the phenol substrate onto the surface of the sensor.

A field emission SEM (JSM-6701F, JEOL Ltd, Peabody, MA) was used to determine the thickness and surface morphology of the sensor surface sol-derived phenol sensor. An accelerating voltage of 10 kV, current of 5  $\mu\text{A}$  and a high vacuum of  $10^{-5}$  Pa for specimen chamber were employed to obtain the optimal resolution. An air-dried GGH phenol sensor films were mechanically fractured using a diamond blade before mounting to the aluminum (Al) stubs. A thin layer of Au was sputtered using Denton Vacuum LLC Desk IV Sputter, (Moorestown, NJ) operating at a vacuum of 50 mTorr. Au coating was applied to improve surface conductivity and prevent charging by the electron beam with high energy.

A TEM (Tecnai G<sup>2</sup> F20, FEI Company, Hillsboro, OH) was used to determine the fine structure of the sol-derived GGH phenol sensor. Tungsten (W) crystal field emission gun with extraction voltage of 4 kV was the source of electrons and electrons were accelerated in the vacuum chamber to 200 kV and a high vacuum of 0.39 mbar was employed to obtain optimal resolution. Samples were diluted and sonicated for 10 minutes for uniform distribution of the particles and deposited onto carbon coated copper (Cu) grids. The crystal

structure was studied with electron diffraction resulting from either single crystal units or polycrystals of the sensing elements. As a complementary approach of crystalline phase identification, an Ultima III XRD with Cu diffractometer and visual XRD Jade 7 software (Rigaku Americas Incorporation, Houston, TX) was used to determine the phase structure. The operating voltage and current were controlled at 40 kV and 44 mA, respectively. An AFM (Nanoscope III, Veeco Cooperation, Santa Barbara, CA) was used to determine the topography, surface uniformity and three-dimension (3D) surface image of the GGH sensor. Samples for analysis were greatly diluted and loaded on to the surface of the mica film. Point probe cantilevers (monolithic silicon AFM probe) were used for analysis in tapping mode of operation. A drive frequency of 362.99 kHz and drive amplitude of 144.1 mV was applied for topographic analysis of the sensor surface.

#### **2.4 Electrokinetic behavior of GGH colloidal suspension**

ZetaPALS™ (Brookhaven Instrument Corporation, (BIC), New York City, NY) was utilized for particle size analysis and colloidal stability of sol prepared. Diluted samples of the GGH were analyzed for particle distribution and zetapotential measurement. The instrument was operated at room temperature and the samples were analyzed for 8 runs and each run for 15 sec to give the best results. The angle of incidence light was 90° and wavelength of operation was 659.0 nm. Results were analyzed with BIC particle sizing software and BIC zetapotential analyzer.

#### **2.5 Evaluation of sensor performance**

In order to evaluate the sensor performance, a colorimetric study was undertaken to determine the limit of detection (LOD), response time, and sensitivity of the sensor. Formation of the indophenols with significant color changes was the key principle for the colorimetric studies. Studies were conducted in a ceramic watch plate with 12 wells, each well with a surface area of approximately 3.14 cm<sup>2</sup>. Various volumes and concentration of Gibbs reagent and phenol buffer were added to observe the color changes (Table 1, also *cf.* § 3.6). At intervals of 15 minutes, a photograph of the sample was collected with computer assisted camera, and the whole experiment was conducted over 24 hr. The collected samples were re-imaged after two weeks and the initial and two-week intensities were compared. No difference was found, indicating that the samples are at least stable up to two weeks. The significance of the background and maximum values were to enable normalization of the different colors in grey-scale mode with background subtraction. In this manner, different intensities due to differences in background color could be compensated for and different formulations directly compared. The grey-scale calibration tablet provided 'internal' calibration allowing changes due to actual phenol to be determined.

### **3. Results and discussion**

The optical properties of the GGH sensor will be discussed first (described in § 3.1), followed by electron and atomic microscopy morphological analysis (described in § 3.2-3.4). The electrokinetic properties will be discussed next (described in § 3.5) followed by actual sensor performance with literature comparison (described in § 2.4) and a conclusion on sensor testing to close the chapter (described in § 4.0).

Sl. No	Parameter 1: Gibbs conc. ( $\mu\text{M}$ )	Parameter 2: Au NPs conc. (M)	Parameter 3: Phenol Conc. (Vol %)	R.O.D = 1/O.D
1	0.025	0.01	6.67	50.21
2	0.025	0.02	7.69	48.41
3	0.025	0.04	8.33	51.37
4	0.05	0.01	15.38	58.06
5	0.05	0.02	10.00	56.51
6	0.05	0.04	12.50	53.84
7	0.10	0.01	14.28	59.85
8	0.10	0.02	25.00	63.98
9	0.10	0.04	14.28	62.72
10	0.15	0.01	20.00	54.50
11	0.15	0.02	25.00	56.80
12	0.15	0.04	40.00	64.31
13	0.20	0.01	16.67	44.31
14	0.20	0.02	25.00	44.25
15	0.20	0.04	33.33	41.56
16	0.25	0.01	50.00	39.62

Average back ground-174.02

Maximum value-255

Table 1. The measurement of relative optical density as function of fabrication variable.

### 3.1 Optical microscopic study on GGH phenol sensor

Optical microscopic images showing the morphological structures of the Gibbs reagent were captured with and without the addition of the phenol. Figure 2A (100 $\times$ ) micrographs show cylindrical and linear nature of the Gibbs reagent (without AgNPs) which were sparsely distributed. The cylindrical properties of these compounds increase the surface area for exposure to phenol for better sensitivity. Figure 2B (400 $\times$ ) indicates that the Gibbs reagent is impregnated with Au-NP clusters. Au-NPs show uniformity in size and shape increase the sensitivity of the sensor due to SPR and the rapid reaction rate between the two ((Gibbs) and target molecule (phenol)) elements. Figure 2C (400 $\times$ ) also shows the morphological changes to the trapping element upon addition of buffered phenol, for the enhanced GGH sensor. These morphological changes were recognized as loss of linear cylindrical structure of Gibbs reagent polymer and of the indophenol complex, whereas Au-NPs remain intact, which provides conspicuous color changes and consequently improves the LOD of phenol.. It can be surmized that Au-NPs act as heterogeneous catalysts to increase the reaction rate between phenol and Gibbs via lowering the activation energy and creating a new pathway. The indophenol complex with various color schemes serves as a delicate indicator to display the sensor performance.

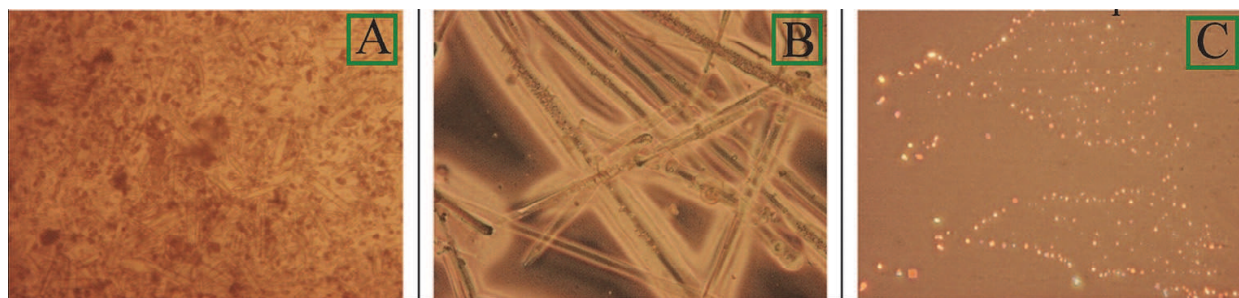


Fig. 2. Optical microscopic photographs of gold-modified Gibbs hybrid sensing element and sensing mechanism, A: the sensor image at 100 ×; B: the sensor image at 400 ×; C: the sensor image at 400 × after addition of buffered phenol analyte.

### 3.2 Scanning electron microscopic study on GGH phenol sensor

SEM micrographs also exhibit the linear cylindrical nature of the Gibbs reagent (Figure 3A) coated with the spherical Au-NPs (before addition of phenol) and GGH sensing element forms mesh-like network, upon addition. Au-NPs display near-spherical shape and their particle sizes vary from approximately 30-40 nm in diameter. Although Au-NPs aggregate and form several large-size clusters, it was determined that evenness of the GGH sensor increased with electrical activity and resulted in improved sensitivity of Gibbs reagent. Figure 3B is an SEM image of GGH sensing element which interacts with the phenol compound when the buffered phenol analytes with various concentrations were introduced. With the addition of phenol to the surface of the GGH sensor, morphological changes of dissolution of porous nature of Gibbs was seen with the formation of the indophenol (colored complex) and loss of mesh work was characterized. Therefore, the formation of the indophenol becomes a delicate indicator to display the regional differentials in color and morphology of the GGH sensor. In turn, this will enhance the sensor sensitivity and its LOD, which is classified by colorimetric values.

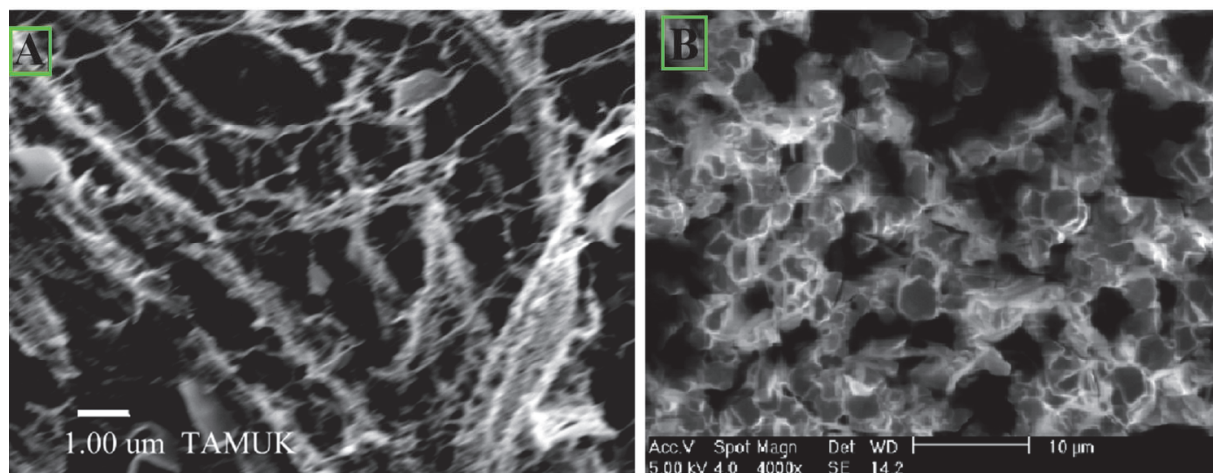


Fig. 3. The SEM top view morphological analyses of sensor, A: the GGH morphology before addition of phenol and B: the GGH morphology after addition of phenol.

### 3.3 Transmission electron microscopic study on GGH phenol sensor

TEM images also depict the inner structural morphology with high spatial resolution of the film as indicated by SEM. TEM images (Figure 4A-D) of GGH depict linear and cylindrical

nature of Gibbs reagent with uniform Au-NP coating. Linear nature of the polymer synthesized in sol method possess better sensitivity for the detection of phenol because large area of contact for electron exchange and consequently for the indophenol complex formation (Figure 4A). Loss of network structure of GGH sensing element was observed upon substrate inclusion via a chemical reaction of the substrate phenol and detecting element, the Gibbs reagent (Figure 4B). These changes were in consistent with the optical and SEM characterization techniques. The significant morphological changes enhanced the limit of detection of the GGH sensor, which allows us to develop sensor with high performance. Figure 4B also depicts the size and shape of Au-NPs of 10-15 nm in diameter. Au-NPs were agglomerating slightly and possess surface plasma resonance. The lattice fringe (Figure 4C) indicates ultrafine Au-NPs were obtained. The ring pattern of Ag-NPs (Figure 4D) results from polycrystals, suggesting high degree of crystallinity was achieved. The indexing of ring pattern suggests that the face-center cubic Au (PDF 00-004-0784,  $a = 0.408$  nm,  $\alpha = 90^\circ$ ) was obtained. This observation is confirmed by XRD analysis (Figure 4E-insert). However, the Gibbs reagent was vaporized under high energy beam of electrons, which is the reason why no ring pattern or electron diffraction was observed. The XRD pattern indicated that the Gibbs reagent (Figure 4E) is well-aligned with the standard 2,6-dichloro-*p*-benzoquinone-4-chlorimine ( $C_6H_2Cl_3NO$ , PDF 25-1917) using lower energy.

### 3.4 Atomic force microscopic study on GGH phenol sensor

AFM images depicted the surface morphology and measured the size of the Au-NPs. Figure 5A showed the sparse distribution of the Au-NPs and figure 5B represents the topography of sensor film active surface at nano-range. Size of coated Au-NP cluster in this study was measured as approximately 30-40 nm in diameter. The Au-NPs was coated on the surface by Gibbs reagent. Since AFM studies the top surface layer of sensor film, it depicts the actual layer which is in contact with phenol but it cannot reveal the inner composition and build up of sensor. Au-NPs were measured to have an effective diameter of 12 nm for Au by itself. With the addition of gum Arabic (GA) to the Au-NPs, increase in the size of NPs was observed with an average cluster dimension of 169.6 nm and polydiversity of 0.267 (dimensionless) for the cluster of coated particles. Analysis shows the mean particle size of GGH was 485 nm and the distribution of (up to 20) particles (polydiversity of 0.05), which was consistent with the SEM findings.

### 3.5 Electrokinetic behavior of GGH colloidal suspension

The measured zeta potentials ( $\zeta$ , with ZetaPALS™) of GGH colloidal suspension were averaged at -23.0 mV. The negative sign indicates repulsive forces between Au-NPs and GGH preventing flocculation and aggregation of particles and the numerical value indicates samples had colloidal stability (Figure 6).  $\zeta$  results indicate that the GGH colloid is stable and agglomeration is successfully prevented using GA as the surfactant. The electrokinetic study also confirms that nano-dispersion of Au with size of 10-15 nm (also found by TEM, see Figure 5B) has been achieved. Fluctuations in the measured value of  $\zeta$  during the experiment were not observed; therefore the measurements were time independent in the present study, which confirms the stability of GGH colloid. Bottom up (sol-gel) green synthesis of Au-NPs modified Gibbs reagent has been developed to prevent the aggregation of the particles during synthesis. To synthesised nanoparticles exhibited high degree of stability (due to the high measured  $\zeta$ , i.e. steric effects > van der Waals forces). The GA

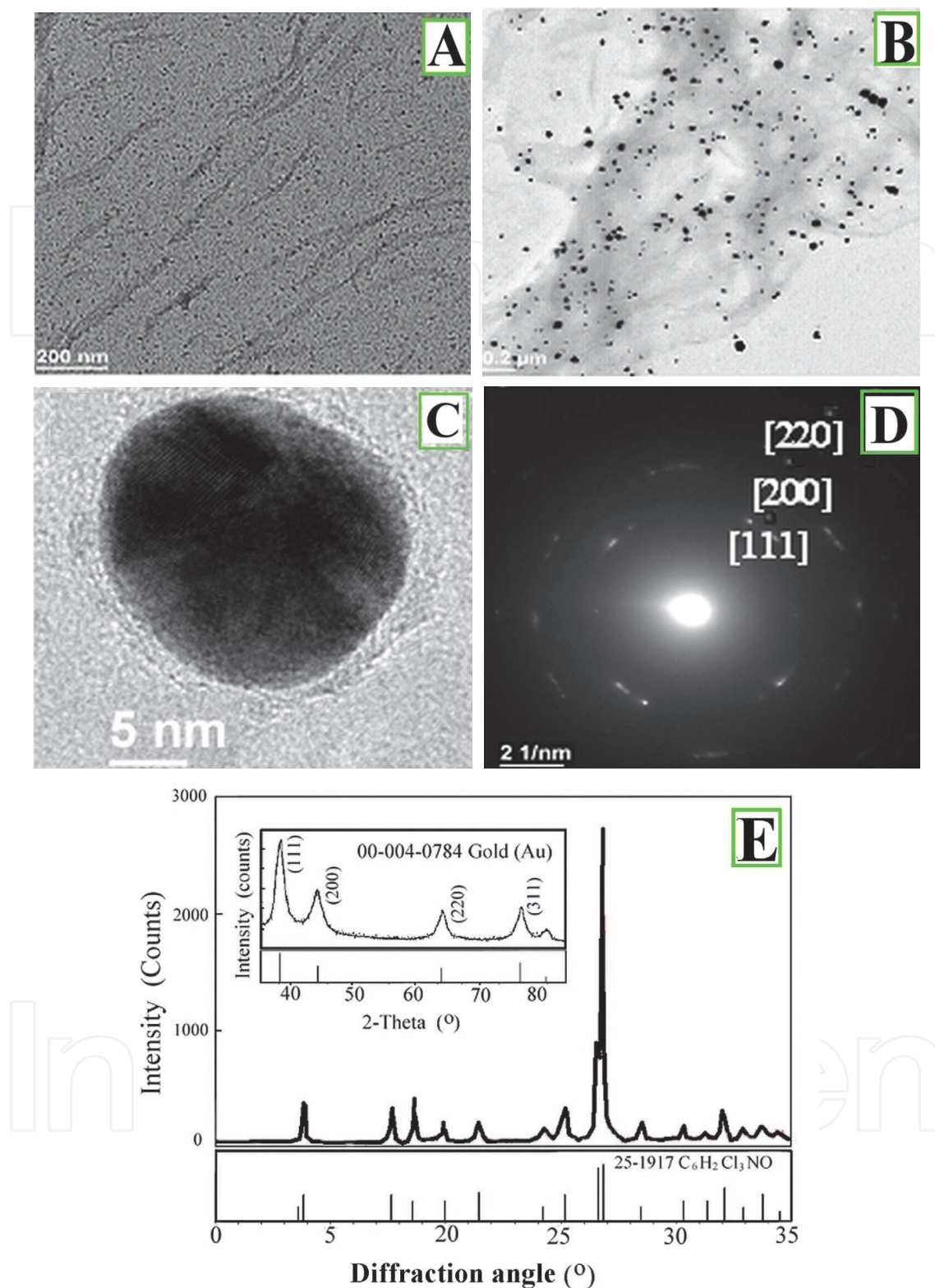


Fig. 4. TEM images of sensing elements, A: morphology of gold-modified Gibbs hybrid sensing element; B: morphology of gold-modified Gibbs hybrid sensing element after addition of buffered phenol analyte; C: lattice fringe of gold-modified Gibbs hybrid sensing element; D: TEM ring pattern of nanogold; E: corresponding X-ray diffraction (XRD) pattern of gold-modified Gibbs hybrid sensing element with standards for gold and Gibbs.

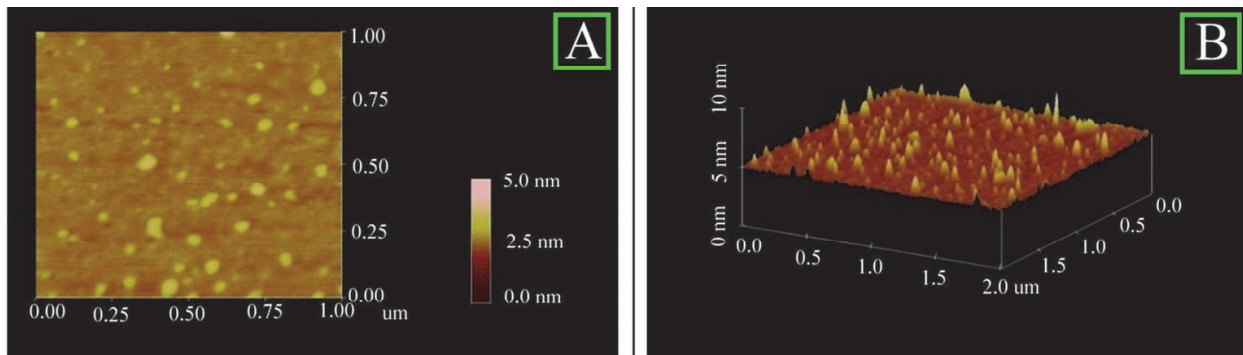


Fig. 5. AFM Images of sensor topology, A: the forward scan of surface 2D topology of gold-modified Gibbs hybrid sensing element; B: the 3D image of gold-modified Gibbs hybrid sensing element to determine the sensor thickness.

polymers are adsorbed onto the particle surface and cause van der Waals forces weakening. Significant steric repulsion prevents Au-NPs from being adhered and the particle surfaces are separated as a result.

The main goal during the synthesis phase was to control the particle size and its structure, followed by nanocharacterization of the nanoparticles. These particles were synthesised using a bottom-up colloidal chemistry approach. Au-NP size was controlled through incorporation of GA as the dispersing agent, which also aids wetting of the metal salt and distribution of the surface of the GGH composed of a continuous Au layer which was then deposited onto the Gibbs cluster successively.

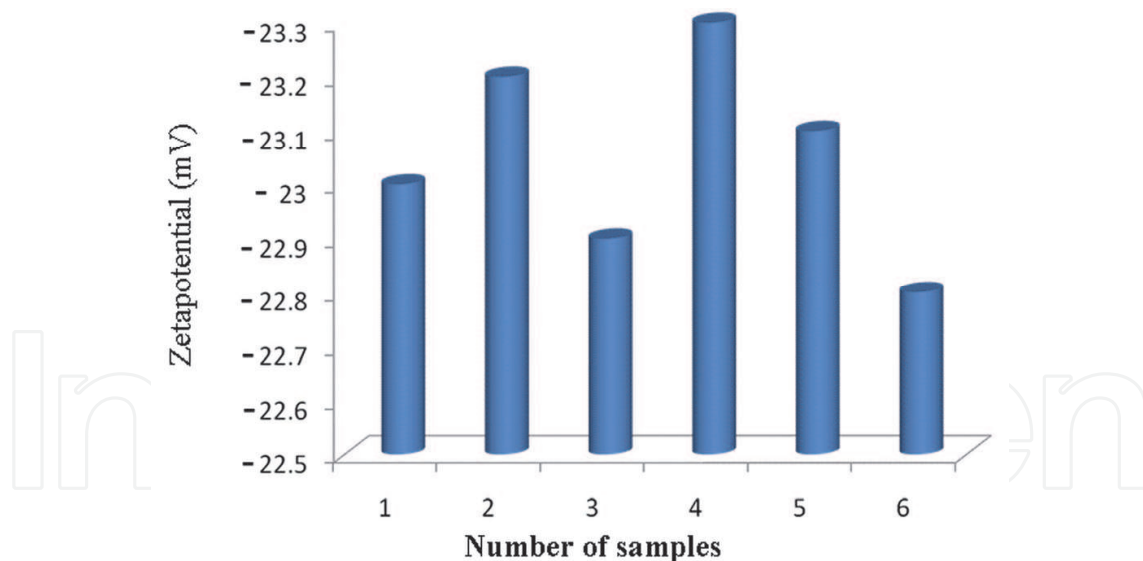


Fig. 6. Zetapotential of gold-modified Gibbs hybrid colloidal suspension, of a number of replicates (n=1-6).

### 3.6 Evaluation of GGH sensor performance

Colorimetric evaluation of the phenol sensor reagent was performed and color changes of different concentrations of phenol and Gibbs reagent in different dilutions at different intervals of time were captured (images not shown). Initial color was developed within one hour and changes in intensity of color were different in all wells with the passage of time.

Using the calibration grey-scale tablet, the minimum intensity value was set to zero and the maximum optical density set to 255, from which the optical density (OD) was calculated as:

$$OD = \log[(255-p)/(255-x)]$$

where 'p' stands for average background correction for the well-plate(s), 'x' for mean intensity of color converted to grey-scale. The measurements were recorded as relative optical density (ROD) values, where

$$ROD = 1/OD$$

ROD of the 12 wells (numbered 1-12) at various intervals was calculated based upon the intensity of color development of each well, converted to grey-scale. Measured intensities from wells 13 to 16 were used for background correction and average background determination to calculate the p-value. Evaluation of the ROD from the different formulations at different intervals was examined, indicating that the variable which influenced the measured ROD the most was phenol concentration. The observed color change was almost instantaneous (~ 1 sec, various parameters are summarized in Table 1, including color intensity recorded every five minutes from zero minutes to twenty-four hours (data not shown)) was standardized to one hour. The calibration plot at one hour for different sensor formulations is shown in figure 7. It was found that optimal parameters were having an incubation time of five minutes for phenol to Gibbs reagent, at a molar ratio of 4:1 between Gibbs reagent to phenol and 1:1 molar ratio between Gibbs reagent and Au. Using various volumes of buffered phenol, the LOD was measured in terms of concentration as 0.1 μM, while the variation in measured ROD was 36%. The ROD values (determined as the (minimum measured intensity value / maximum intensity value) x 100)

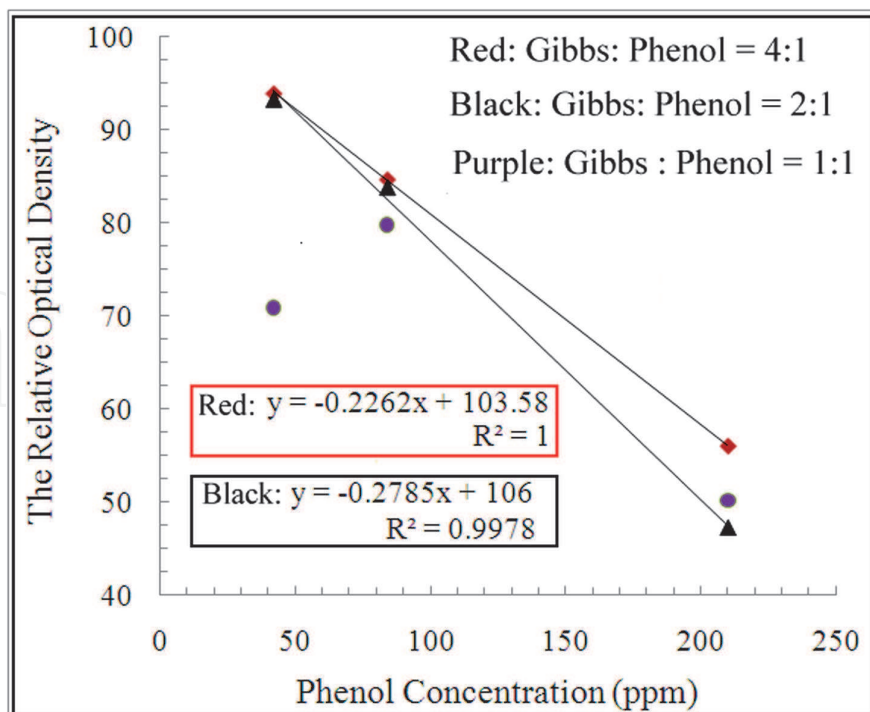


Fig. 7. The sensitivity study using various concentration ratios of Gibbs vs phenols, noting three formulations were selected to demonstrate the linearity of sensitivity.



indicate degree of sensitivity to subtle changes in color, after a fixed time period (optimised to either 5 or 60 min). The mode of sensor operation is schematically illustrated in figure 8.

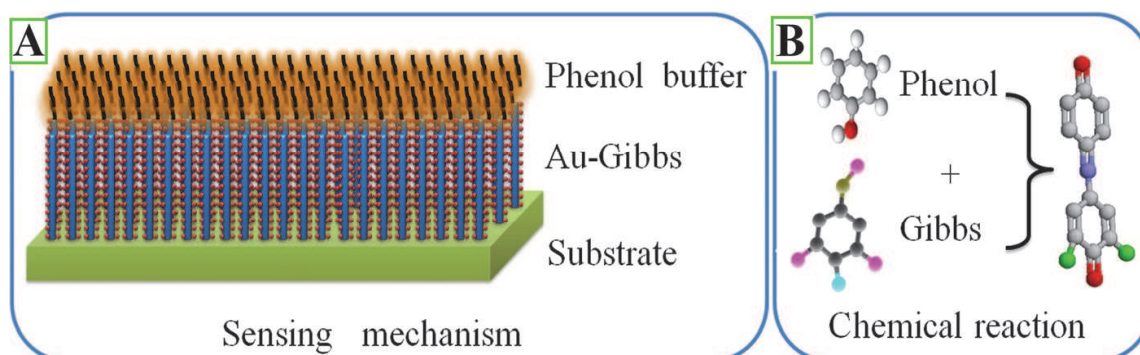


Fig. 8. A: Schematic of likely operation of sensor and B: likely intermediate.

Accurate quantification of phenol is important because of its well documented health side effects such as stress to the kidneys, liver, heart, respiratory tract, mucous membranes and central nervous system upon acute exposure (Diz *et al.*, 2006). In comparison to sol-gel derived Au-NPs, other investigations in the analysis of phenol (Metzger *et al.*, 1998) or its derivatives (Neujahr, 1982) have been based on enzymes (Orupold *et al.*, 1995) from species such as *Trichosporon sporotrichoides*. (Rella *et al.*, 1996) *Pseudomonas putida* (Skládal *et al.*, 2002) and *Bacillus stearothermophilus* (Buswell, 1975) coupled to Clark-type oxygen electrode (reviewed by Patel, 2002) for detection of phenol.

Procedures in preparing a sensor require advanced techniques of immobilization of bacteria (or substrate enzyme) to increase the stability of the final biosensor (reviewed by Warsinke *et al.*, 1999). The roles of enzymes (derived from various plant tissues, spores or bacteria) are as substrate-specific biocatalysts (Wollenberger *et al.*, 1999). Where phenol, is the substrate this involves electron transfer between the enzyme and substrate ( $\text{phenol} + 10 \text{ O}_2 + 2\text{H}^+ \rightarrow \text{catechol} + \text{tyrosinase} + 10 \text{ O}_2 \rightarrow \text{phthalate quinone}$ ) and generation of current, which in turn is related to consumption of oxygen during the oxidation process in a Clark-type electrode (reviewed by Scheller *et al.*, 1988). Thus amperometric tyrosinase-modified imprinted or carbon electrode sensors have been extensively tested in determination of dissolved oxygen and indirectly phenol including some derivatives of phenol (reviewed by Riedel *et al.*, 2002). This can be exploited by utilization of enzymes from microorganisms which utilise phenol as a fuel source (such as laccase, Y. Liu *et al.*, 2006) or enzymes, which can accept electrons to generate energy directly such as with *Shewanella oneidensis* via extracellular electron transfer mechanisms (H. Liu *et al.*, 2010) have wider applications in biofuels and energy generation using biocatalysts (reviewed by Ragauskas *et al.*, 2006). In our study, a colorimetric system was used toward detection of phenol (and not generation of energy) by using Gibbs reagent as the detecting/sensing element; because of its high detection limit and formation of indophenol colored complex when in contact with phenol (Raybin, 1945). Sol-based GGH sensors have overcome the problems of enzymatic or bacterial sensors because of their ease of preparation, low cost, high sensitivity, stability and operation under wide temperature, pH ranges. The 0.1  $\mu\text{M}$  LOD compares favorably with other designs and is summarized in Table 2.

Type	LOD ( $\mu\text{M}$ )	Linear range ( $\mu\text{M}$ )	Response time (s)	Notes or Reference
Resonance-enhanced multiphoton ionization (REMPI) time-of-flight (ToF) mass spectrometry	1 ng L <sup>-1</sup>	0.1 $\mu\text{g L}^{-1}$ -10 mg L <sup>-1</sup>	-	Alimpiev <i>et al.</i> , 1995
Electrode with enzyme	< 0.1 mg/L	0.1-1.0 mg/L	< 300	Rainina <i>et al.</i> 1996
Amperometric biosensor	1.2	-	-	Table 1 of Lindgren <i>et al.</i> , 1997
Electrode with enzyme *	0.015 **	0.03 - 100	-	Table 3 of Nistor <i>et al.</i> , 1999
Electrode with enzyme	0.2 nM	$1.5 \times 10^{-9}$ - $3.5 \times 10^{-4}$ mol/L	< 4	Z. Liu <i>et al.</i> , 2000
Enzyme-based calorimetric sensor	1 mM	-	< 300	Wolf <i>et al.</i> , 2000
Amperometric biosensor	6.1 nM	4- 48	< 5	S. Liu <i>et al.</i> , 2003
Gas Chromatography-Mass Spectrometry	10 pg	1 -12 ng	8 - 10	E. Staples, 2004
Amperometric biosensor	0.05	0 - 1	50 - 250	Tingry <i>et al.</i> , 2006
Amperometric biosensor	0.36 nM	$3.6 \times 10^{-9}$ - $4 \times 10^{-5}$ M	-	Han <i>et al.</i> , 2007
Amperometric biosensor	1-10	0.005 - 10	10 - 480	Table 3 of Bashir & J. Liu, 2009
Amperometric / colorimetric biosensor	1	2.6 - 5.2	< 5	Bashir & J. Liu, 2009
Electrode with enzyme	0.005 -0.410	-	-	Table 1 of Alarcón <i>et al.</i> , 2010
Screen printed electrode (SPE) with enzyme	0.14	0.05 - 1	~ 15	Alarcón <i>et al.</i> , 2010

(\*) The likely reaction is: phenol+ enzyme  $\rightarrow$  catechol; catechol + tyrosinase  $\rightarrow$  oquinone + H<sub>2</sub>O; o-quinone + 2H<sup>+</sup> + 2e<sup>-</sup> $\rightarrow$  catechol (at electrode surface) (Yu *et al.*, 2003), noting that phenol oxidized to o-quinone and is reduced to catechol (O<sub>2</sub> $\rightarrow$  2H<sub>2</sub>O) (Renedo *et al.*, 2007)

(\*\*) as catechol equivalents

Table 2. Literature review of sensors, their limit of detection (LOD in  $\mu\text{M}$ ), the detection range (Linear range in  $\mu\text{M}$ ) and the response time (in seconds), unless otherwise stated..

#### 4. Conclusion

A GGH based sensor for the colorimetric detection of phenol was fabricated and evaluated. The sensor was successfully optimized using a trial-and-error approach of 16 formulations, involving a trapping and detecting element with AuNPs to enhance the SPR with phenol incubated at different times. The detector was based upon sol-gel technology utilizing trapping/detecting elements, which can be extended to other environmental pollutants or pharmaceutical organics, if sensor selectivity and sensitivity can be achieved.

Characterization revealed the nanostructure of the gold and GGH complex as spherical Au-NPs with size range of 10-15 nm, for individual NPs or 30-40 nm for metal clusters which were fabricated as linear cylindrical polymers of Gibbs reagents coated with clusters of Au-NPs (optimal molar ratio was 1:1 and 4:1 for Gibbs:phenol respectively). The stability of the sol sensor was measured in terms of zeta potential was shown to be - 23.0 mV indicating stability of the sensor. Colorimetric based detecting elements were incorporated to bench test the performance of the sensor. The results indicate that once the intermediate color is formed was stable for at least for two weeks (the length of the study). The LOD for phenol (at room temperature) was 0.1  $\mu$ M, with sensor sensitivity to small changes in color being 36% including a fast response time (< 1 sec, although the LOD values are based upon 60 minute incubation) as measured using colorimetric technique. The strategy outlined in the current chapter, although applied specifically to the detection of phenol, can similarly be applied to the detection of other environmental organic pollutants providing an appropriate detecting /sensing element can be found.

## 5. Acknowledgements

The authors are grateful to Texas A&M University-Kingsville (TAMUK), the College of Arts and Sciences Research and Development Fund and Robert A. Welch Departmental Grant, (AC-0006) for funding this research activity. The technical support from the National Science Foundation, Major Research Instrumentation program is duly acknowledged to allow the use of Rigaku Ultima III X-ray powder diffraction (TAMU-Corpus Christi) and JEOL JSM-6701F field emission scanning electron microscopy (TAMUK, CBET-0821370). The Microscope and Imaging Center and the Center of Materials Characterization Facility at TAMU-College Station are also duly acknowledged for technical support and access to the advanced instrumentation, respectively. Last but not least, the authors wish to thank Dr. Maribel González-García from Texas A&M University-Kingsville (TAMUK) for access to the optical microscopic and Dr. Thomas Hays for copy-editing the book chapter respectively.

## 6. Author contributions

C. Padidem conducted the synthesis, electrokinetic study and optical characterization of the sensor and co-wrote the first draft. S. Bashir and J. Liu conceived the concept and experiment design and co-supervised C. Padidem. In addition, he did the calibration of the optical study, some of the data analyses and generation of certain graphs, plots and schemes. J. Liu completed the rest of the experimental procedure (except where acknowledged elsewhere). She co-wrote the first draft, and completed the re-writing and editing. J. Liu also supervised the entire study, coordinated with the other investigators and in liaison with (e.g. Dr. Luo at) the Materials Characterization Facility and Microscopy Imaging Center at Texas A&M University-College Station, obtained the AFM and TEM images (see acknowledgment section) and oversaw the entire submission process.

## 7. References

Afghan, B. K.; Belliveau, P. E.; Larose R. H. & Ryan, J. F. (1974). An Improved Method For Determination of Trace Quantities of Phenols In Natural Waters, *Analytica Chimica Acta*, Vol. 71, No. 2 (August, 1974), pp. 355-366, ISSN 0003-2670

- Akai, S. & Kita, Y. (1998). Recent Progress In The Synthesis of P-Quinones and P-Dihydro-Quinones Through Oxidation of Phenol Derivative. *A Review Organic Preparations and Procedures International* Vol. 30, No. 20, (May 1998) pp.603-605, ISSN 0030-4948
- Alarcon, G.; Guix, M.; Ambrosi, A.; Silva, M. T. R.; Pardave, M. E. P. & Merkoz, A. (2010). Stable and sensitive flow-through monitoring of phenol using a carbon nanotube based screen printed biosensor. *Nanotechnology*, Vol. 21, No. 24, (June ), 245502 pp. 1-to-9, ISSN 1361-6528
- Alimpiev, S.S. Mlynski, V. V.; Belov, M.E. & Nikiforov, S. M. (1995). Selective Detection of Phenol Impurities in Water. *Analytical Chemistry*, Vol. 67 , No. 1, (January, 1995), pp. 181-186, ISSN 1306-3057
- Armentrout, D. N.; McLean, J. D. & Long, M. W. (1979). Trace determination of phenolic compounds in water by reversed phase liquid chromatography with electrochemical detection using a carbon-polyethylene tubular anode. *Analytical Chemistry*, Vol. 51, No. 7, (June, 1979), pp. 1039-1045, ISSN 13063057
- Aslan, K.; Zhang, J.; Lakowicz, J.R. & Geddes, C.D. (2004). Saccharide Sensing Using Gold and Silver Nanoparticles-A Review. *Journal of Fluorescence*, Vol. 14, No. 4, (July, 2004), pp. 391-400, ISSN 1053-0509
- Babich H. & Davis, D. L. (1981). Phenol: A Review of Environmental and Health Risks, Regulatory. *Regulatory Toxicology and Pharmacology*, Vol.1, No.1, (January 1981), pp. 90-109, ISSN 0273-2300
- Bashir, S.; Derrick, P.J.; Critchley, P.; Gates, P.J.& Staunton, J. (2003). Matrix-assisted laser desorption/ionization time-of-flight mass spectrometry of dextran and dextrin derivatives. *European Journal of Mass Spectrometry* , Vol. 9, No. 1, (January,2003), pp.61-70, ISSN 1469-0667
- Bashir, S. & Liu, J. L. (2009). Construction and characterization of phenol-based sensor derived from colloidal chemistry. *Sensors and Actuators B*, Vol. 139, No. 2, (June, 2009), pp. 584-591, ISSN 0925-4005
- Benvenue, A.& Beckman, H. (1967). Pentachlorophenol: A Discussion of Its Properties and Its Occurrence As A Residue In Human and Animal Tissues, In: *Residue Reviews*, Gunther, F.A. (Eds.), Volume 19, pp. 83-134, Springer, ISSN 0080-181X, New York, USA.
- Bhatia, K. (1973). Determination of trace phenol in aqueous solution by aqueous liquid chromatography. *Analytical Chemistry*, Vol. 45, No. 8, (July, 1973), pp. 1344-1347, ISSN 1306-3057
- Bidlingmeyer, B.A. (1980). Separation of Ionic Compounds by Reversed-Phase Liquid Chromatography An Update of Ion-Pairing Techniques. *Journal of Chromatographic Science*, Vol. 18, No. 10, (October, 1980), pp. 525-539, ISSN 0021-9665
- Box, J.D. (1983). Investigation of the Folin-Ciocalteu phenol reagent for the determination of polyphenolic substances in natural waters. *Water Research*, Vol.17, No. 5, (May 1983), pp. 511-525, ISSN 0043-1354
- Bruce, R. M.; Santodonato, J. & Neal, M. W. (1987). Summary Review of The Health Effects Associated With Phenol. *Toxicology and Industrial Health*, Vol. 3, No. 4, (April, 1987), pp. 535-568, ISSN 1477-0393
- Buehler C. A & Pearson D. E. (1970). *Survey of Organic Synthesis*, pp. 285-382, Wiley-Interscience, ISBN 9780894644085, New York, USA

- Busca, G.; Berardinelli, S.; Resini, C.; Arrighi, L. (2008). Technologies for the removal of phenol from fluid streams: A short review of recent developments. *Journal of Hazardous Materials*, Vol. 160, No. 1 (March, 2008), pp. 265-88, ISSN 0304-3894
- Buswell, J.A. (1975). Metabolism of phenol and cresols by *Bacillus stearothermophilus*. *Journal of Bacteriology*, Vol. 124, No. 3, (December, 1975), pp. 1077-1083, ISSN 0021-9193
- Chau A. S. Y. & Coburn, J. A. (1974). Determination of Pentachlorophenol In Natural and Waste Waters. *Journal of the Association of Official Analytical Chemists (JAOAC)*, Vol. 57, No. 2 (March, 1974), pp. 389-93, ISSN 0004-5756
- Chick, H. (1908). An Investigation of The Laws of Disinfection. *Journal of Hygiene* Vol. 8, No.1, (August 1908), pp. 92-158, ISSN 0022-1724
- Churatek, J. & Houpek, J. (1975). Phenols In: *Liquid Column Chromatography A Survey of Modern Techniques and Applications*, Deyl, Z.; Macek, K. & Janák, J. (Eds.), pp. 441-449, Elsevier, New York, USA, ISBN 9780444411563 (Also See *Journal of Chromatography Library*, Vol. 3, No.1, (March, 1975), ISSN 0301-4770)
- Crosby, D. G. (1982). Environmental Chemistry: An Overview. *Environmental Toxicological Chemistry*, Vol. 1, No.1, (January , 1982), pp. 1-8, ISSN 0730-7268
- Dacre, J.C. (1971). Nonspecificity of the Gibbs reaction. *Analytical Chemistry*, Vol. 43, No. 4, (April, 1971), pp. 589-591, ISSN 1306-3057
- Dannis, M. (1951). Determination of Phenols by the Aminoantipyrine Method. *Sewage and Industrial Wastes*, Vol. 23, No. 12, (December, 1951), pp. 1516-1522, ISSN 0096-364X
- Deichmann, W.B. & Keplinger, M.L. (1962). Phenols and phenolic compounds. In: *Industrial Hygiene and Toxicology*, Patty, F.A., (Ed.), Interscience, pp. 1363-1375, ISBN , New York, ISBN 0471160466
- Di Corcia, A. (1973). Analysis of Phenols by Gas – Liquid – Solid Chromatography. *Journal of Chromatography A*, Vol. 80, No. 1, (June, 1973), pp. 69-74, ISSN 0021-9673
- Diz, V.; Cassanello, D. & Negri, R.M. (2006). Detection and discrimination of phenol and primary alcohols in water using electronic noses. *Environmental Science & Technology*, Vol. 40, No. 19, (September, 2006), pp. 6058-6063, ISSN 0013-936X
- Eksperiandova, L. P.; Fokina, I. I.; Blank, A. B.; Ivkova, T. I. & Soukhomlinov, B. P. (1999). Determination of small quantities of phenol in water. *Analytica Chimica Acta*, Vol. 396, No. 2-3, (September, 1999), pp.317-320, ISSN 0003-2670
- Engeldinger, E.; Armspach, D. & Matt, D. (2003). Capped cyclodextrins. *Chemical Reviews*, Vol 103, No. 11, (November, 2003), pp. 4147-4173, ISSN 0009-2665
- Ettinger, M. B. & Ruchhoft, C. C. (1948). Determination of Phenol and Structurally Related Compounds by Gibbs Method. *Analytical Chemistry*, Vol. 20, No. X, (1948), pp.1191-1196, ISSN 1306-3057
- Farino, J.; Norwitz, G.; Boyko, W.J. & Keliher, P.N. (1981). Study of the behaviour of various phenolic compounds in the 4-aminoantipyrine and ultraviolet-ratio spectrophotometric methods without and with distillation. *Talanta*, Vol. 28, No. 9, (September, 1981), pp. 705-708, ISSN 0039-9140
- Fichholz, G. G. ; Nagel A. E. & Hughes, R. H. (1965). Adsorption of Ions Dilute Aqueous Solutions On Glass and Plastic Surfaces. *Analytical Chemistry*, Vol. 37, No.7 (June, 1965), pp. 863-868, ISSN 1306-3057
- Folin, O. & Denis, W. (1915). A colorimetric method for the determination of phenols (and phenol derivatives) in urine. *Journal of Biological Chemistry*, Vol. 22, No. 2 (September, 1914), pp. 305-320, ISSN 0021-9258

- Folke, J. (1985). Environmental Impact Assessment for Aquatic Ecosystems of Industrial Effluents, *Toxicological and Environmental Chemistry*, Vol. 10, No.3, (February , 1985), pp. 201-224, ISSN: 1029-0486
- Gattuso, G.; Nepogodiev, S.A. & Stoddart, J.F. (1998). Synthetic cyclic oligosaccharides. *Chemical Reviews*, Vol. 98, No. 5, (July, 1998), pp. 1919-1958, ISSN 0009-2665
- Gerberding, J. L. (Ed.). (2002). *Toxicological Profile For Wood Creosote, Coal Tar Creosote, Coal Tar, Coal Tar Pitch and Coal Tar Pitch Volatiles*, U. S. Department of Health and Human Services, ISBN 978-1-4200-6188-8, Washington D.C, USA
- Gibbs, H.D. (1927a). Phenol tests. II. Nitrous acid tests. The Millon and similar tests. Spectrophotometric investigations. *Journal of Biological Chemistry*, Vol. 71, No. 2, (January, 1927), pp. 455-459, ISSN 0021-9258
- Gibbs, H.D. (1927b). Phenol Tests. IV. A Study of the Velocity of Indophenol Formation 2,6-Dibromobenzenoneindophenol. *Journal of Physical Chemistry*, Vol. 31, No. 7, (January, 1927), pp. 1053-1081, ISSN 1089-5647
- Giger, W. & Schaffner, C. (1981). Determination of Phenolic Water Pollutants By Glass Capillary Gas Chromatography, In: *Advances In The Identification and Analysis of Organic Pollutants In Water*, Keith, L.H. (Ed.), pp. 141-154, Vol. 1, Ann Arbor Science, ISBN 0250403978, Ann Arbor, Michigan, USA
- Gilman, A. P. , Douglas, V. M.; Newhook, T. E. Arbuckle, R. C. (Eds.). (1988). *Chlorophenols and Their Impurities: A Health Hazard Evaluation*, Health and Welfare Canada, Document No. H46-2/88-110E, ISBN: 0662173678
- Gogate, P. R. (2008). Treatment of Wastewater Streams Containing Phenolic Compounds Using Hybrid Techniques Based On Cavitation: A Review of The Current Status and The Way Forward. *Ultrasonics Sonochemistry*, Vol. 15, No 1, (January 2008), pp. 1-15, ISSN 1350-4177
- Goulden, P. D.; Brooksbank, P. & Day, M.B. (1973). Determination of submicrogram levels of phenol in water. *Analytical Chemistry*, Vol. 45, No. 14, (January, 1973), pp. 2430-2433, ISSN 1306-3057
- Greminger, D. C.; Burns, G. P.; Lynn, S.; Hanson, D. N.; King, C. J. (1982). Solvent extraction of phenols from water, *Industrial & Engineering Chemistry Process Design and Development*, Vol. 21, No.1 (January, 1982), pp. 51-54, ISSN 0196-4305
- Gupta, V.D. (2006). Quantitative Determination of Resorcinol in Presence of Phenol. *Journal of Pharmaceutical Sciences*, Vol. 65, N.1, (September, 2006), pp. 144-145, ISSN 0022-3549
- Han, E.; Shan, D.; Xue, H. & Cosnier, S. (2007). Hybrid Material Based on Chitosan and Layered Double Hydroxides: Characterization and Application to the Design of Amperometric Phenol Biosensor. *Biomacromolecules*, Vol. 8, No. 3, (January, 2007), pp. 971-975, ISSN 1525-7797
- Hanrahan, G.; Patil, D. G. & Wang, J. (2004). Electrochemical sensors for environmental monitoring: design, development and applications. *Journal of Environmental Monitoring*, Vol. 6, No.8, (August, 2004), pp. 657-664, ISSN 1464-0325
- Hart, J. P. & Wring, S. A. (1997). Recent developments in the design and application of screen-printed electrochemical sensors for biomedical, environmental and industrial analyses. *Trends in Analytical Chemistry*, Vol. 16, No. 2, (February, 1997), pp. 89-103, ISSN 0167-2940

- Hill, R.H. & Herndon, L.K. (1952). Determination of Phenols by the p-Nitro-Sodimethylaniline Method. *Sewage and Industrial Wastes*, Vol. 24, No. 11, (November, 1952), pp. 1389-1396, ISSN 0096-364X
- Hoffsommer, J. C.; Glover D. J. & Hazzard, C. Y. (1980). Quantitative analysis of polynitrophenols in water in the micro- to nanogram range by reversed-phase ion-pair liquid chromatography. *Journal of Chromatography A*, Vol. 195, No. 3, (July, 1980), pp. 435-440, ISSN 0021-9673
- Hornyak, G.L.; Patrissi, C.J.; Oberhauser, E.B.; Martin, C.R.; Valmalette, J-C.; Lemaire, L. ; Dutta J. & Hofmann, H. (1997). Effective medium theory characterization of Au/Ag nanoalloy-porous alumina composites. *Nanostructured Materials*, Vol. 9, No. 1-8, (January, 1997), pp. 571-574, ISSN 0965-9773
- Houghton G. U. & Pelly R. G. (1937). A colorimetric method for the determination of traces of phenol in water. *The Analyst*, Vol. 62, No. 731, (February, 1937), pp. 117-120, ISSN 0003-2654
- Janshoff, A.; Steinem, C.; Michalke, A.; Henke, C. & Galla, H.-J. (2000). Monofunctionalized  $\beta$ -cyclodextrins as sensor elements for the detection of small molecules. *Sensors and Actuators B: Chemical*, Vol. 70, No. 1-3, (November, 2000), pp. 243-253, ISSN 0925-4005
- Jones, P.A. (Ed.). (1981). *Chlorophenols, and Their Impurities In The Canadian Environment*, Environmental Impact Control Directorate, Environment Canada, Report EPS 3-EC-81-2, (March 1981), ISBN: 0662114825, Toronto, Canada; Also See The 1983 Supplement, Report 3-EP-84-3 (March 1984) ISBN 0662131592
- Kadish, A. H & Hall, D. A. (1965). A New Method for the Continuous Monitoring of Blood Glucose by Measurement of Dissolved Oxygen. *Clinical Chemistry*, Vol. 11, No. 9 (September, 1965), pp. 869-875, ISSN 1434-6621
- Karube, I.; Nomura, Y. & Arikawa, Y. (1995). Biosensors for environmental control. *Trends in Analytical Chemistry*, Vol. 14, No. 1, (January, 1995), pp. 295-299, ISSN 0167-2940
- Khan, A.R.; Forgo, P.; Stine, K.J. & De Souza, V.T. (1998). Methods for selective modifications of Cyclodextrins. *Chemical Reviews*, Vol. 98, No. 5, (July, 1998), pp. 1977-1996, ISSN 0009-2665
- Kim, Y.J., Cho, S.M., Pyo, H-B. & Choi, C. A. (2005). Sub-ppm detection of gold nanoparticle transducer toward carboxyl functionality. *Institute of Electrical and Electronics Engineers (IEEE) Sensors*, Vol. 6, No. 10-11, (October, 2005), pp. 845-848, ISSN 1530-437X
- Klein, L. C. (Ed.). (1988). *Sol-Gel Technology For Thin Films, Fibers, Preforms, Electronics and Specialty Shapes*, Noyes Publications, ISBN 0-8155-1154-X, Berkshire, UK
- Kozak, V. P.; Simsiman, G. V. ; Chesters, G.; Stensby D. & Harkin, J. (Eds.). (1979). *Reviews of The Environmental Effluents of Pollutants: X. Chlorophenols*, United States Environmental Protection Agency (US EPA), EPA-600/1-79-012, Washington, DC, USA, ISBN/OCLC 06950053
- Kuehl, D.W. & Dougherty, R. C. (1980). Pentachlorophenol in the environment. Evidence for its origin from commercial pentachlorophenol by negative chemical ionization mass spectrometry. *Environmental Science & Technology*, Vol. 14, No. 4, (April, 1980), pp. 447-449, ISSN 0013-936X
- Kutner W. & Doblhofer K. (1992). Simultaneous cyclic voltammetry and electrochemical quartz-crystal microbalance study at the polymer film modified electrodes of

- molecular inclusion of ferrocene by the  $\beta$ -cyclo-dextrin polymer film and carboxymethylated  $\beta$ -cyclodextrin polymers as well as ferrocenecarboxylic acid by the  $\beta$ -cyclodextrin polymer. *Journal of Electroanalytical Chemistry*, Vol. 326, No. 1-2, (May, 1992), pp. 139-160, ISSN 0022-0728
- Lante, A.; Crapisi, A.; Krastanov, A. & Spettoli, P. (2000). Biodegradation of phenols by laccase immobilized in a membrane reactor. *Process Biochemistry*, Vol. 36, No. 1-2, (September, 2000), pp. 51-58, ISSN 0032-9592
- Lee, H.B.; Weng, L. D. & Chau, A. S. Y. (1984a). Chemical derivatization analysis of pesticide residues. IX. Analysis of phenol and 21 chlorinated phenols in natural waters by formation of pentafluorobenzyl ether derivatives. *Journal of the Association of Official Analytical Chemists*, Vol. 67, No. 6, (November, 1984), pp. 1086-1091, ISSN 0004-5756
- Lee, H.B.; Weng, L. D. & Chau, A.S.Y. (1984b). Chemical derivatization analysis of pesticide residues. VIII: Analysis of 15 chlorophenols in natural water by *in situ* acetylation. *Journal of the Association of Official Analytical Chemists*, Vol. 67, No. 4, (July, 1984), pp. 789-794, ISSN 0004-5756
- Lindgren, A.; Emneus, J.; Ruzgas, T.; Gorton, L. & Marko-Varga, G. (1997). Amperometric detection of phenols using peroxidase-modified graphite electrodes. *Analytica Chlmica Acta*, Vol. 347, No. 1-2, (May, 1997), pp. 51-62, ISSN 0003-2670
- Lindinger, W.; Hansel A. & Jordan, A. (1998). On-line monitoring of volatile organic compounds at pptv levels by means of proton-transfer-reaction mass spectrometry (PTR-MS) medical applications, food control and environmental research. *International Journal of Mass Spectrometry and Ion Processes*, Vol. 173, No.3, (February, 1998), pp. 191-241, ISSN 0168-1176
- Link, S. & El-Sayed, M.A. (2003). Optical Properties and Ultrafast Dynamics of Metallic Nanocrystals. *Annual Revision of Physical Chemistry*, Vol. 54, No. 1, (January, 2003), pp. 331-366, ISSN 0066-426X
- Lisk, D.J. (1970). The Analysis of Pesticide Residues: New Problems and Methods. *Science*, Vol. 170, No. 958, (November, 1970), pp. 589-593, ISSN 0036-8075
- Liu, J. & Lu, Y. (2004). Colorimetric biosensors based on DNAzyme-assembled gold nanoparticles. *Journal of Fluorescence*, Vol. 14, No. 4, (July, 2004), pp. 343-354, ISSN 1053-0509
- Liu, H.; Matsuda, S.; Kato, S.; Hashimoto, K. & Nakanishi, S. (2010). Redox-Responsive Switching in bacterial Respiratory Pathways involving Extracellular Electron Transfer. *ChemSusChem*, Vol. 3, No. 1, (March, 2010), pp. 1253-1256, ISSN 1864-5631
- Liu, S.; Yu, J. & Ju, H. (2003). Renewable phenol biosensor based on a tyrosinase-colloidal gold modified carbon paste electrode. *Journal of Electroanalytical Chemistry*, Vol. 540, No. 1, (January 2003), pp. 61-67, ISSN 0022-0728
- Liu, Y.; Qu, X.; Guo, H.; Chen, H.; Liu, B. & Dong, S. (2006). Facile preparation of amperometric laccase biosensor with multifunction based on the matrix of carbon nanotubes-chitosan composite. *Biosensors and Bioelectronics*, Vol 21, No. 2, (June, 2006), pp. 2195-2201, ISSN 0956-5663
- Liu, Z.; Liu, B.; Kong, J. & Deng, J. (2000). Probing Trace Phenols Based on Mediator-Free Alumina Sol-Gel-Derived Tyrosinase Biosensor. *Analytical Chemistry*, Vol. 72, No. 19, (August, 2000), pp. 4707-4712, 1306-3057
- Liz-Marzan, L.M. (2004). Nanometals: formation and color. *Materials Today*, Vol. 7, No. 2, (February , 2004), pp. 26-31, ISSN 1369-7021



- Lykken, L. ; Treseder, R.S. & Zahn, V. (1946). Colorimetric Determination of Phenols. Application to Petroleum and Allied Products. *Industrial & Engineering Chemistry Research*, Vol. 18, No. 2 (February , 1946), pp. 103–109, ISSN 1520-5045
- Lyklema. J. (1995). *Fundamentals of Colloid and Interface Science*, Academic Press, ISBN 0124605249, London, U.K.
- Lynch, J.P. & Loh, K. J. (2006). A Summary Review of Wireless Sensors and Sensor Networks for Structural Health Monitoring. *The Shock and Vibration Digest*, Vol. 38, No. 91, (March, 2006), pp. 91-128, ISSN 0583-1024
- Mallick, A. Purkayastha, P. & Chattopadhyay, N. (2007). Photoprocesses Of Excited Molecules In Confined Liquid Environments: An Overview. *Journal Of Photochemistry And Photobiology C-Photochemistry Reviews*, Vol. 8, No. 3 (November, 2007), pp. 109-127, ISSN 1389-5567
- Manna, A.; Imae,T.; Aoi, K.; Okada, M. & Yogo, T. (2001). Synthesis of Dendrimer-Passivated Noble Metal Nanoparticles in a Polar Medium: Comparison of Size between Silver and Gold Particles. *Chemistry of Materials*, Vol. 13, No. 5, (April, 2001), pp. 1674–1681, ISSN 0897-4756
- Martin, R. W. (1949). Rapid Colorimetric Estimation of Phenol,. *Analytical Chemistry*, Vol. 21, No. 11, (November, 1949), pp. 1419–1420, ISSN 1306-3057
- Martus, P. & Puttmann, W. (2003). Formation of Alkylated Aromatic Acids In Groundwater By Anaerobic Degradation of Alkylbenzenes. *The Science of The Total Environment*, Vol.307, No.(1-3), (May 2003), pp. 19-33, ISSN 0048-9697
- Mathew, J. & Elzerman, A. W. (1981). Gas-Liquid Chromatographic Determination of Some Chloro- and Nitrophenols by Direct Acetylation in Aqueous Solution. *Analytical Letters*, Vol. 14, No. (1981), pp. 1351–1361, ISSN 0003-2719
- McKillop, A.; Fiaud, J.-C & Hug, R. P. (1974). The Use of Phase-Transfer Catalysis For The Synthesis of Phenol Ethers. *Tetrahedron* , Vol.30, No. 11 (June, 1974), 1379-1382, ISSN 0040-4020
- Metzger, J.; Reiss, M. & Hartmeier, W. (1998). Amperometric phenol biosensor based on a thermostable phenol hydroxylase, *Biosensors and Bioelectronics*, Vol. 13, No. 10, (November, 1998) 1077-1082, ISSN 0956-5663
- Nath, N. & Chilkoti, A. (2002). A Colorimetric Gold Nanoparticle Sensor To Interrogate Biomolecular Interactions in Real Time on a Surface. *Analytical Chemistry*, Vol. 74, No. 4, (December, 2002), pp. 504–509, ISSN 1306-3057
- National Research Council of Canada (NRCC). (1982). *Chlorinated Phenols: Criteria For Environmental Quality*, NRCC, NRCC No. 18578, ISBN/OCLC 13059308, Ottawa, Ontario, Canada
- Neujahr, H.Y. (1982). Determination of phenol and catechol concentrations with oxygen probes coated with immobilized enzymes or immobilized cells. *Applied Biochemistry and Biotechnology*, Vol. 7, No. 1-2, (January, 1982) 107-111, ISSN 0273-2289
- Nistor, C.; Emnéus, J.; Gorton, L. & Ciucu, A. (1999). Improved stability and altered selectivity of tyrosinase based graphite electrodes for detection of phenolic compounds. *Analytica Chimica Acta*, Vol. 387, No. 3, (April, 1999), pp. 309-326, ISSN 0003-2670
- Norwitz, G.;Farino, J. & Keliher, P.N. (1979). Interference of oxidants in the determination of phenol by the 4-aminoantipyrine and ultraviolet ratio spectrophotometric methods. *Analytical Chemistry*, Vol. 51, No. 11, (September, 1979), ISSN 0003-2700

- Ogan K.L. & Katz, E.D. (1980). Retention characteristics of several bonded-phase liquid chromatography columns for some polycyclic aromatic hydrocarbons, *Journal of Chromatography A*, Vol. 188, No. 1, (January, 1980), pp. 115-127, ISSN 0021-9673
- Orupold, K.; Mashirin, A. & Tenno, T. (1995). Amperometric phenol sensor with immobilized bacteria. *Electroanalysis*, Vol. 7, No. 9. (September, 1995) 904-906, ISSN 1521-4109
- Patel, P.D. (2002) (Bio) sensors for measurement of analytes implicated in food safety: a review. *Trends in Analytical Chemistry*, Vol. 21 , No. 2, (February ,2002), pp. 96-115, ISSN 0167-2940
- Pumera, M.; Sánchez, S.; Ichinose, I. & Jie Tang. (2007). Electrochemical nanobiosensors. *Sensors and Actuators B: Chemical*, Vol. 123, No. 2, (May, 2007), pp. 1195-1205, ISSN 0925-4005
- Ragauskas, A.J.; Williams, C. K.; Davison, B.H.; Britovsek, G.; Cairney, J.; Eckert, C.A.; Frederick, Jr W.J.; Hallett, J.P.; Leak, D.J.; Liotta, C.L.; Mielenz, J.R.; Murphy, R.; Templer, R. & Tschaplinski, T. (2006). The Path Forward for Biofuels and Biomaterials. *Science*, Vol. 311, No.5760, (January, 2006), pp.484-489, ISSN 0036-8075
- Rainina, E. I.; Badalian, I. E.; Ignatov, O. V.; Fedorov, A. Y.; Simonian, A. L. & Varfolomeyev, S. D. (1996). Cell biosensor for detection of phenol in aqueous solution. *Applied Biochemistry and Biotechnology*, Vol.56, No. 2, (February , 1996), pp. 117-127, ISSN 0273-2289
- Rakestraw, N.W. (1923). A Quantitative method for the Determination of Phenols in Blood. *Journal of Biological Chemistry*, Vol. 56, No. 1 (May, 1923), pp. 109-119, ISSN 0021-9258
- Rao, K.R. (Ed.). (1978). *Pentachlorophenol: Chemistry, Pharmacology and Environmental Toxicology*, Plenum Press, ISBN, New York, USA
- Raybin, H.W. (1945). Reaction of Theophylline with Gibbs' Reagent. *Journal of the American Chemical Society*, Vol. 67, No. 9, (September, 1945) pp. 1621-1623, ISSN 0002-7863
- Realini, P.A. (1980). Determination of priority pollutant phenols in water by HPLC. *Journal of Chromatographic Science*, Vol. 19, No. 3, (March, 1980), pp. 124-129, ISSN 0021-9665
- Regnier Z. & Watson, A. E. P. (1971). The Development of Colorimetric and Fluorometric Automated Methods For Trace Phenol Estimation In: *Natural Waters*, Regnier Z. & Watson, A. E. P. (Eds.), pp. 23-115, Water Quality Division Research Report, Department of The Environment, Ottawa Canada
- Rella, R.; Ferrara, G.; Barison, G. & Doretto, L. (1996). High-temperature operating biosensor for the determination of phenol and related compounds. *Biotechnology and Applied Biochemistry*, Vol. 24, No. 1, (1996), pp. 83-88, ISSN 0885-4513
- Renberg, L. & Björseth, A. (Eds.). (1983). *Determination of Phenols In Water, A Brief Summary of Current Knowledge and Proposed Analytical Methods*, Commission of The European Communities, COST 64b Bis, Report of The Working Party 8, Specific Analytical Problems OMP/38/83, Hague Holland
- Renberg, L. (1981). Gas Chromatographic Determination of Chlorophenols In Water, as their pentafluorobenzoyl derivatives. *Chemosphere*, Vol. 10, No. 7, pp. 767-773, (July 1981), ISSN 0045-6535
- Renberg, L. (Ed.). (1982). *Phenolic Compounds - Analytical Methods In Relation To Environmental Aspects*, Commission of The European Communities, COST 64b Bis, Report of The Workshop of The Working Party 8, Specific Analytical Problems, OMP/33/82, Dübendorf, Switzerland

- Renedo, O. D.; Alonso-Lomillo, M.A. & Martínez, M.J.A. (2007). Recent developments in the field of screen-printed electrodes and their related applications. *Talanta*, Vol. 73, No. 2, (September, 2007), pp. 202-219, ISSN 0039-9140
- Ribick, M.A.; Smith, L.M.; Dubay, G.R. & Stalling, D.L. (1981). Applications and Results of Analytical Methods Used in Monitoring Environmental Contaminants, In: *Aquatic Toxicology and Hazard Assessment*, Branson D.R. & Dickson, K.L. (Eds.), pp. 23-45, American Society for testing of Materials (ASTM), ISBN 9789993664383, Philadelphia, USA.
- Riedel, K.; Kunze, G. & König, A. (2002). Microbial Sensors on a Respiratory Basis for Wastewater Monitoring In: *History and Trends in Bioprocessing and Biotransformation: Advances in Biochemical Engineering/Biotechnology*, Scheper, E. (Ed.), vol. 75, pp. 81-118 (December, 2002), Springer-Verlag, ISBN 9783540423713, Berlin, Germany
- Rodriguez-Mozaz, S.; de Alda, M. J. L.; Marco, M.-P. & Barceló, D. (2005). Biosensors for environmental monitoring: A global perspective, *Talanta*, Vol. 65, No. 2 (January, 2005), pp.291-297, ISSN 0039-9140
- Rogers, K. R. (1995). Biosensors for environmental applications, *Biosensors and Bioelectronics*. Vol. 10, No. 6-7 (May-June, 1995), pp. 533-541, ISSN 0956-5663
- Saby, C.; Male, K. B. & Luong, J. H. T. (1997). A Combined Chemical and Electrochemical Approach Using Bis(trifluoroacetoxy)iodobenzene and Glucose Oxidase for the Detection of Chlorinated Phenols. *Analytical Chemistry*, Vol. 69, No. 21, (November, 1997), pp. 4324-4330, ISSN 1306-3057
- Sahoo, S.K.; Diinawaz, F. & Kumar, S.K. (2008). Nanotechnology In Ocular Drug Delivery. *Drug Discovery Today*, Vol. 13, No. 3-4, (February , 2008), pp. 144-151, ISSN 1359-6446
- Salkinoja-Salonen, M.; Saxelin, M. -L.; Pere, J.; Jaakkola, T.; Saarikoski, J.; Hakulinen R. & Koistinen, O. (1981). Analysis of Toxicity and Biodegradability of Organochlorine Compounds Released Into The Environment In Bleaching Effluents of Kraft Pulp. In: *Advances In The Identification and Analysis of Organic Pollutants In Water*, Keith, L.H. (Ed.), pp. 1131-1164, Ann Arbor Science, ISBN 0250403986 Ann Arbor, Michigan, USA
- Salústio, P.J.; Feio, G.; Figueirinhas, J.L.; Pinto, J.F. & Cabral Marques, H.M. (2009). The influence of the preparation methods on the inclusion of model drugs in a beta-cyclodextrin cavity. *European Journal of Pharmaceutics and Biopharmaceutics*, Vol.71, No. 2, (February, 2009), pp. 377-386, ISSN 0939-6411
- Scheller, F. W.; Pfeiffer, D.; Lisdat, F.; Bauer, C. & Gajovic, N. (1988). Enzyme Biosensors Based on Oxygen Detection, In: *Enzyme and Microbial Biosensors: Methods in Biotechnology*, Mulchandani, A. & Rogers, K. R. (Eds.), Vol. 6, pp. 51-65, Springer-Verlag, ISBN 0896034100, Berlin, Germany
- Shammala, F.A. (1999). Effect of Surfactant Loading on the Extraction Properties of C-18 Bonded Silica used for Solid-Phase Extraction of Phenols. *Analytical Letters*, Vol.32, No.15, (October, 1999), pp. 3083-3110, ISSN 0003-2719
- Skládal, P.; Morozova, N.O. & Reshetilov, A.N. (2002). Amperometric biosensors for detection of phenol using chemically modified electrodes containing immobilized bacteria. *Biosensors and Bioelectronics*, Vol. 17, No. 10, (October, 2002), pp. 867-873, ISSN 0956-5663

- Smith, B. & Persmark, U. (1963b). Characterization of Certain Ortho Substituted Phenols Using Tetracyanoethylene. *Acta Chemica Scandinavica*, Vol. 17, No. 3, (March, 1963), pp. 651-656, ISSN 0001-5393
- Smith, B.; Persmark, U. & Edman, E. (1963a). The Use of Tetracyanoethylene for the Qualitative Analysis of Phenols. *Acta Chemica Scandinavica*, Vol. 17, No.3 (March, 1963), pp. 709-722, ISSN 0001-5393
- Smyth, C.; Lau, K. T.; Shepherd, R. L.; Diamond, D.; Wu, Y.; Spinks, G. M. & Wallace, G.G. (2008). Self-maintained colorimetric acid/base sensor using polypyrrole actuator. *Sensors and Actuators B: Chemical*, Vol. 129, No. 2, (February, 2008), pp. 518-524 ISSN 0925-4005
- Staples, C. A.; Dome, P. B. & Klecka, G. M. (1998). Sondra T. Oblock, L. R. Harrie, A review of the environmental fate, effects, and exposures of bisphenol A. *Chemosphere*, Vol. 36, No. 10, (April, 1998) 2149-2173, ISSN 0045-6535
- Staples, E. J. (2004). Detection of Phenol in Water and Air Using the zNose™. Electronic Sensor Technology Technical Report
- Svobodová, D.; Kenek, P., Fraenkl, M. & Gaspari, J. (1977a). Colour Reaction Of Phenols With The Gibbs Reagent. The Reaction Mechanism And Decomposition And Stabilisation Of The Reagent. *Microchimica Acta*, Vol. 67, No. 3-4, (March, 1977), pp. 251-264, ISSN 0026-3672
- Svobodová, D.; Křenek, P.; Fraenkl, M. & Gasparič, J. (1977b). Colour reaction of phenols with the gibbs reagent. The reaction mechanism and decomposition and stabilisation of the reagent. *Microchimica Acta*, Vol. 67, No. 3-4, (March, 1971), pp. 251-264, ISSN 0026-3672
- Svobodová, D. & Gasparič, J. (1971). Investigation of the colour reaction of phenols with 4-aminoantipyrine. *Microchimica Acta*, Vol. 59, No. 2, (February, 1971), pp. 384-390, ISSN 0026-3672
- Taras, M.J.; Greenberg, A.E. & Hoak, R.D. (Eds.). (1971). *Standard Methods For The Examination of Water and Wastewater*, American, Public Health Association, American Water Works Association, & Water Pollution Control Federation, ISBN 0875530605, Washington, D.C
- Tingry, S.; Innocent, C.; Touil, S.; Deratani, A. & Seta, P. (2006). Carbon paste biosensor for phenol detection of impregnated tissue: modification of selectivity by using  $\beta$ -cyclodextrin-containing PVA membrane. *Materials Science and Engineering: C*, Vol. 26, No. 2-3, (March 2006), pp. 222-226, ISSN 0928-4931
- Tomlinson, E.; Jefferies, T.M. & Riley, C.M. (1978). Ion-pair high-performance liquid chromatography. *Journal of Chromatography A*, Vol. 159, No. 3, (October, 1978), pp. 315-358, ISSN 0021-9673
- United States Department of Agriculture (USDA). (1980a). *The Biological and Economic Assessment of Pentachlorophenol, Inorganic Arsenicals, and Creosote*. USDA, Technical Bulletin No. 1658-1, ISBN/OCLC 48112299, Washington, DC, USA
- United States Department of Agriculture (USDA). (1980b). *The Biological and Economic Assessment of Pentachlorophenol, Inorganic Arsenicals, and Creosote*, USDA, TB1658, ISBN/OCLC 21621465, Washington, DC, USA
- United States Environmental Protection Agency (US EPA). (1980). *Ambient Water Quality Criteria For Chlorinated Phenols*, USDA, EPA 440/5-80-032, ISBN/OCLC 06998602, Washington, DC: USA

- Van Kreijl C. F. & Slooff, W. (Eds.). (1983). *Biological Effects of Phenolic Compounds*, Report of The Workshop of The Working Party 8, Specific Analytical Problems, COST 64b Bis, March 2-4 OMP/37/83, Commission of The European Communities, Hague Holland
- Warsinke, A.; Benkert, A. & Scheller, F. W. (1999). Electrochemical immunoassays. *Fresenius' Journal of Analytical Chemistry*, Vol. 366, No. 6-7, (June, 1999), pp. 622-634, ISSN 0937-0633
- Wang, J. (1997). Remote electrochemical sensors for monitoring inorganic and organic pollutants. *Trends in Analytical Chemistry*, Vol. 16, No. 2, (February, 1997), pp. 84-88, ISSN 0167-2940
- Wegman, R.C.C. & Wammes, J.I.J. (1983). Determination of nitrophenols in water and sediment samples by high-performance liquid chromatography. *Mededelingen van de Faculteit Landbouw- wetenschappen Rijksuniversiteit Gent*, Vol. 48, pp. 961-969, ISSN 0368-9697
- West F. K.; West, P. W. & Iddings, F. A. (1966). Adsorption of Traces of Silver on Container Surfaces. *Analytical Chemistry*, Vol. 38, No. 11, (October, 1966), pp. 1566-1570, ISSN 1306-3057
- Wolf, A.; Hüttl, R. & Wolf, G. (2000). Enzymatic Reactions For The Calorimetric Detection Of Phenolic Compounds. *Journal of Thermal Analysis and Calorimetry*, Vol. 61, No. 1, (January, 2000), pp. 37-44, ISSN 1418-2874
- Wollenberger, U.; Neumann, B.; Riedel, K. & Scheller, F. W. (1994). Enzyme and microbial sensors for phosphate, phenols, pesticides and peroxides. *Fresenius' Journal of Analytical Chemistry*, Vol. 348, No. 8-9, (August, 1994), pp. 563-566, ISSN 0937-0633
- Xanthos, M. (1969). Plastics Processing, In: *Encyclopedia of Polymer Science and Technology*, Mark, H. F. & Gaylord, N. (Eds.), pp. 120-141, Wiley-Interscience, ISBN 0471275077, New York, USA
- Yu, J.; Liu, S. & Ju, H. (2003). Mediator-Free Phenol Sensor Based On Titania Sol-Gel Encapsulation Matrix For Immobilization of Tyrosinase By A Vapor Deposition Method. *Biosensors and Bioelectronics*, Vol. 19, No. 5, (December, 2003), pp. 509-514, ISSN 0956-5663
- Zhang, X.; Li, A. ; Jiang, Z. & Zhang, Q. (2006). Adsorption of Dyes and Phenol From Water On Resin Adsorbents: Effect of Adsorbate Size and Pore Size Distribution. *Journal of Hazardous Materials* Vol.137, No. 2 (September 2006), pp. 1115-1122, ISSN 0304-3894



## **New Perspectives in Biosensors Technology and Applications**

Edited by Prof. Pier Andrea Serra

ISBN 978-953-307-448-1

Hard cover, 448 pages

**Publisher** InTech

**Published online** 27, July, 2011

**Published in print edition** July, 2011

A biosensor is a detecting device that combines a transducer with a biologically sensitive and selective component. Biosensors can measure compounds present in the environment, chemical processes, food and human body at low cost if compared with traditional analytical techniques. This book covers a wide range of aspects and issues related to biosensor technology, bringing together researchers from 12 different countries. The book consists of 20 chapters written by 69 authors and divided in three sections: Biosensors Technology and Materials, Biosensors for Health and Biosensors for Environment and Biosecurity.

### **How to reference**

In order to correctly reference this scholarly work, feel free to copy and paste the following:

Chandra Padidem, Sajid Bashir and Jingbo Liu (2011). Nanointegration: Sensor Enhancement using Nanomaterials to Detect the Pharmaceutical Residue, *New Perspectives in Biosensors Technology and Applications*, Prof. Pier Andrea Serra (Ed.), ISBN: 978-953-307-448-1, InTech, Available from: <http://www.intechopen.com/books/new-perspectives-in-biosensors-technology-and-applications/nanointegration-sensor-enhancement-using-nanomaterials-to-detect-the-pharmaceutical-residue>

**INTECH**  
open science | open minds

### **InTech Europe**

University Campus STeP Ri  
Slavka Krautzeka 83/A  
51000 Rijeka, Croatia  
Phone: +385 (51) 770 447  
Fax: +385 (51) 686 166  
[www.intechopen.com](http://www.intechopen.com)

### **InTech China**

Unit 405, Office Block, Hotel Equatorial Shanghai  
No.65, Yan An Road (West), Shanghai, 200040, China  
中国上海市延安西路65号上海国际贵都大饭店办公楼405单元  
Phone: +86-21-62489820  
Fax: +86-21-62489821

© 2011 The Author(s). Licensee IntechOpen. This chapter is distributed under the terms of the [Creative Commons Attribution-NonCommercial-ShareAlike-3.0 License](#), which permits use, distribution and reproduction for non-commercial purposes, provided the original is properly cited and derivative works building on this content are distributed under the same license.

IntechOpen

IntechOpen