

We are IntechOpen, the world's leading publisher of Open Access books Built by scientists, for scientists

4,800

Open access books available

122,000

International authors and editors

135M

Downloads

Our authors are among the

154

Countries delivered to

TOP 1%

most cited scientists

12.2%

Contributors from top 500 universities



WEB OF SCIENCE™

Selection of our books indexed in the Book Citation Index
in Web of Science™ Core Collection (BKCI)

Interested in publishing with us?
Contact book.department@intechopen.com

Numbers displayed above are based on latest data collected.
For more information visit www.intechopen.com



High Frequency Techniques: the Physical Optics Approximation and the Modified Equivalent Current Approximation (MECA)

Javier Gutiérrez-Meana, José Á. Martínez-Lorenzo
and Fernando Las-Heras
*University of Oviedo
Spain*

1. Introduction

In most of the electromagnetic problems, the number of unknowns to evaluate the scattered fields grows whenever the size of the antenna, device or scenario increases or the working frequency becomes higher. In this context, the rigorous full-wave methods –e.g. Method of Moments (MoM), Fast Multipole Method (FMM) (Engheta et al., 1992), Finite-Difference Time-Domain (FDTD) (Taflove & Umashankar, 1987) or Finite-Difference Frequency-Domain (FDFD) (Rappaport & McCartin, 1991), Finite Element Method (FEM) (Kempel et al., 1998) – can not tackle the analysis of such problems beyond an upper limit determined by the computational requirements in terms of time and memory. High frequency techniques consist in the asymptotic evaluation of the Maxwell's equations. As a consequence, they provide good accuracy when dealing with electrically large geometries meanwhile the computational needs diminish with respect to the aforementioned methods. Within the high frequency techniques, the Geometrical Optics (GO) and the Physical Optics (PO) approximation are the most extended methods due to the successful results obtained in various fields such as Radar Cross Section (RCS), design of reflector antennas or radioelectric coverage calculation. Since the Physical Optics approximation is detailed in the following section, the Geometrical Optics is briefly summarised.

The main interest in the GO lies in the fact that incident, reflected and transmitted electromagnetic waves are studied based on the conservation of the energy flux along a ray tube between a source and an observation point. Therefore, the Geometrical Optics is usually referred to as Ray Optics. The GO comprises two different methodologies (Rossi & Gabillet, 2002): Ray Tracing (Glassner, 1989) – the starting point is the receiver or observation point and a path to the source is sought analysing the reflections on walls, buildings, mountains – and Ray Launching – multiple rays are launched from the source, so they are independently followed until an observation point or the receiver is reached. One of the common applications of the GO is the evaluation of radio electric coverage or the channel characterization in urban scenarios.

Both the GO and the PO techniques require of an additional method to compute the contribution due to the diffraction phenomenon. The GO can be complemented by means of the Geometrical Theory of Diffraction (GTD) (Keller, 1962) or the Uniform Theory of

Diffraction (UTD) (Pathak & Kouyoumjian, 1974). On the other hand, the Physical Theory of Diffraction (PTD) (Ufimtsev, 1962) is applied in joint with the PO formulation.

This chapter focuses on the PO approximation and especially on its extension to dielectric and lossy materials, namely the Modified Equivalent Current Approximation (MECA) method. In section 2, the PO approximation is presented and the formulation is obtained from the equivalence principle. Then the MECA method is introduced, so the equivalent current densities are obtained at the end of section 3.1.3. In order to complete the expressions, the reflection coefficients are then calculated and the determination of the electromagnetic field levels at the observation points based on an analytical solution of the radiation integral is accomplished in section 3.2. A couple of validation examples are studied before continuing to describe the algorithms for solving the visibility problem and, specifically, the Pyramid method in section 4. Afterwards, some of the applications of MECA are listed in “*Application examples*” where an example of radio electric coverage evaluation is also shown. “*Conclusion*” and “*References*” closes the chapter.

2. The Physical Optics (PO) approximation

The Physical Optics (PO) approximation (Harrington, 2001; Balanis, 1989) is a well-known high frequency technique based on the determination of the equivalent current densities induced on the surface of an illuminated perfect electric conductor (PEC) plane. The final expressions can be achieved through the equivalence principle as it will be shown in section 2.1, so once these equivalent or PO current densities are obtained, both electric and magnetic field levels can be calculated from the corresponding radiation integrals.

In order to be in compliance with the constraints introduced by the PO approximation, some aspects have to be evaluated prior to the selection of this technique to tackle any electromagnetic problem:

- The geometry must be made of electrically large obstacles with a smooth variation of their surfaces.
- Given a radiating source, a distinction between lit and non-lit regions must be possible to perform.

The latter implies the need of a complementary algorithm to identify line of sight (LOS) directions from a specific point of view. Some methods will be commented in section 4.

Henceforth, for the sake of simplicity, a time-harmonic variation, $e^{j\omega t}$, of the electromagnetic fields and current densities is assumed. Likewise, the spatial dependence of those variables is not explicitly written.

2.1 PO formulation

The expressions for the electric and magnetic equivalent current densities, J^{PO} and M^{PO} respectively, can be derived from the physical equivalent (Balanis, 1989) in Fig. 1(left), where a scheme consisting of two different media is presented: a PEC on the left and a medium with permittivity ϵ_1 , permeability μ_1 and conductivity σ_1 on the right. Consequently, the boundary S between the first and the second media is a PEC plane with the outward normal unit vector \hat{n} pointing to the right.

The incident electric and magnetic fields due to external sources and in absence of any obstacle are E_1^{inc} and H_1^{inc} . On the other hand, the total fields inside the PEC are null ($E_{PEC}^{tot} = H_{PEC}^{tot} = 0$), while in the second medium E_1^{tot} and H_1^{tot} are calculated by adding

those incident fields to the reflected ones denoted by E_1^{ref} and H_1^{ref} . Therefore the electric and magnetic induced current densities, J and M , at the boundary S can be obtained from the tangential components of the total fields as:

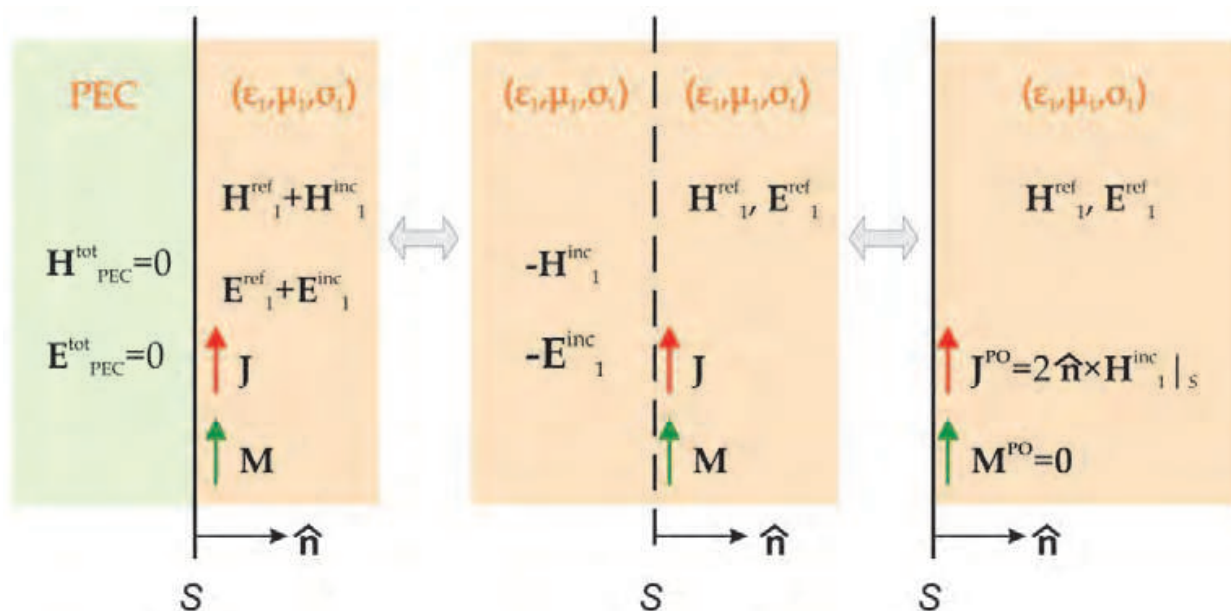


Fig. 1. Equivalence principle and Physical Optics approximation.

$$\begin{aligned}
 J &= \hat{n} \times (H_1^{tot} - H_{PEC}^{tot}) \Big|_S = \hat{n} \times H_1^{tot} \Big|_S = \hat{n} \times (H_1^{inc} + H_1^{ref}) \Big|_S \\
 M &= -\hat{n} \times (E_1^{tot} - E_{PEC}^{tot}) \Big|_S = -\hat{n} \times E_1^{tot} \Big|_S = -\hat{n} \times (E_1^{inc} + E_1^{ref}) \Big|_S = \mathbf{0}
 \end{aligned}
 \tag{1}$$

Fig. 1 (centre) shows the equivalent problem for the non-PEC medium. In order to keep the same boundary conditions, this medium has been extended replacing the PEC part and the total fields are now $-E_1^{inc}$ and $-H_1^{inc}$ at the left side of S and E_1^{ref} and H_1^{ref} at its right side.

Considering the characterization of the boundary S as a PEC plane in Fig. 1(right) and taking into account the expressions in Eq. (1), the Physical Optics approximation states that H_1^{inc} and H_1^{ref} at the boundary S are in phase and also have the same amplitude. Thus, J^{PO} and M^{PO} can be expressed as:

$$\begin{aligned}
 J^{PO} &= \hat{n} \times (H_1^{inc} + H_1^{ref}) \Big|_S \approx 2\hat{n} \times H_1^{inc} \Big|_S \\
 M^{PO} &= -\hat{n} \times (E_1^{inc} + E_1^{ref}) \Big|_S = \mathbf{0}
 \end{aligned}
 \tag{2}$$

At this point, an additional consideration to complete the PO formulation is included: when dealing with finite geometries, the PO current density is null in the regions not illuminated by the source:

$$J^{PO} = \begin{cases} 2\hat{n} \times H_1^{inc} \Big|_S & \text{litregion} \\ \mathbf{0} & \text{non-litregion} \end{cases}
 \tag{3}$$

This is the reason why the distinction between shadowed and illuminated parts of the scenario is one of the aforementioned constraints to correctly apply the PO approximation.

3. The Modified Equivalent Current Approximation (MECA) method: a PO extension for penetrable and non-metallic objects

Even though several electromagnetic problems fulfil the restrictions by the PO approximation in terms of electric size or radius of curvature, the characterization of the obstacles as perfect electric conductors reduces the scope of application of this high frequency technique.

Previous works (Rengarajan & Gillespie, 1988; Hodges & Rahmat-Samii, 1993, Sáez de Adana et al., 2004) agree that the extension of the PO approximation for penetrable and non-metallic objects have to account for the reflection coefficients R in order to apply the boundary conditions at the interface between the two media –one of the media uses to be the air. In this context, it is convenient to accomplish a decomposition of the incident fields into their transversal electric (TE) and transversal magnetic (TM) components to independently insert R_{TE} and R_{TM} in the evaluation of the equivalent current densities:

$$E^{inc} = E_{TE}^{inc} + E_{TM}^{inc} = E_{TE}^{inc} \hat{e}_{TE} + E_{TM}^{inc} \hat{e}_{TM} \quad (4)$$

where \hat{e}_{TE} and \hat{e}_{TM} are the unit vectors in the direction of the TE and TM components of the incident electric field respectively. Likewise, the incident magnetic field can be written in an analogous way.

The Modified Equivalent Current Approximation (MECA) method (Meana et al., 2010) is a new high frequency technique based on the evaluation of a set of equivalent currents to calculate electromagnetic field levels at any observation point. The most important features of this method are:

- MECA deals with electrically large scenarios consisting of dielectric and lossy surfaces due to both electric and magnetic equivalent currents, J^{MECA} and M^{MECA} , are taken into account.
- MECA reduces to the PO expressions when considering PEC obstacles. Therefore, it can be seen as an extension and an improvement of the classic Physical Optics approximation.
- Reflection coefficients are calculated in a rigorous manner.
- A constant amplitude and linear phase current density distribution on the surface of the facets is adopted to analytically solve the radiation integral.

3.1 MECA formulation

Let us suppose a skew plane wave impinging on the interface S with an angle of incidence denoted by θ^{inc} and a unit incident vector \hat{k}^{inc} . The two media are now characterised by their respective permittivities (ϵ_1, ϵ_2), permeabilities (μ_1, μ_2) and conductivities (σ_1, σ_2). The analysis of the TE and TM components will be presented separately.

3.1.1 TE component

For the incident wave, the coordinate system $[\hat{k}^{inc}, \hat{e}_{TM}, \hat{e}_{TE}]$ where

$$\begin{aligned} \hat{e}_{TE} &= \frac{\hat{k}^{inc} \times \hat{n}}{|\hat{k}^{inc} \times \hat{n}|} \\ \hat{e}_{TM} &= \hat{e}_{TE} \times \hat{k}^{inc} \end{aligned} \quad (5)$$

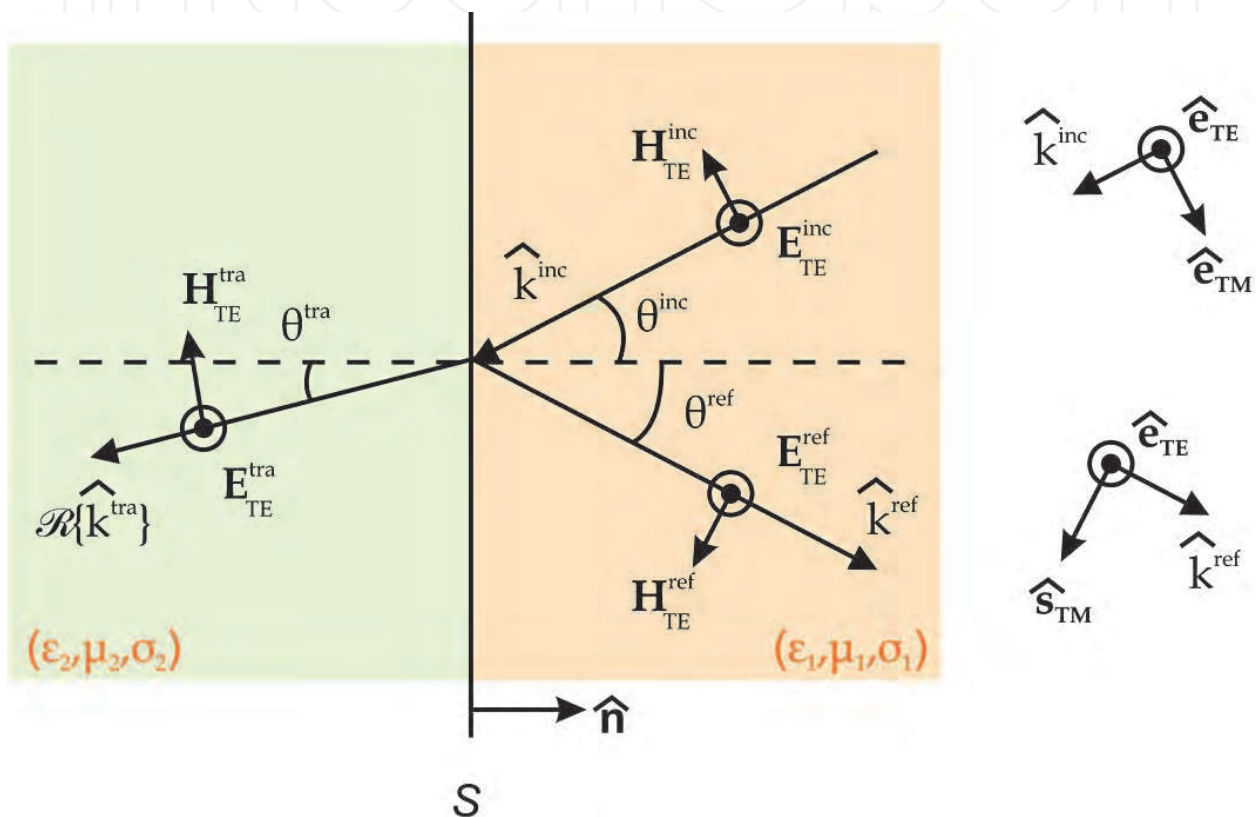


Fig. 2. Field decomposition. TE component.

has been chosen (see Fig. 2). Substituting \hat{k}^{inc} by the unit reflection vector \hat{k}^{ref} , the coordinate system $[\hat{s}_{TM}, \hat{k}^{ref}, \hat{s}_{TE} = \hat{e}_{TE}]$ is defined. Then, the incident electric and magnetic fields are rewritten in terms of these unit vectors:

$$\begin{aligned} E_{TE}^{inc} &= E_{TE}^{inc} \hat{e}_{TE} \\ H_{TE}^{inc} &= -H_{TE}^{inc} \hat{e}_{TM} = \frac{1}{\eta_1} E_{TE}^{inc} (\hat{k}^{inc} \times \hat{e}_{TE}) \end{aligned} \quad (6)$$

where the intrinsic impedance of the first medium η_1 is $\eta_i = \sqrt{\frac{j\omega\mu_i}{j\omega\epsilon_i + \sigma_i}}$, $i = 1, 2$.

From the Snell law, the angle of reflection θ^{ref} is equal to θ^{inc} . Therefore, \hat{k}^{ref} can be expressed as:

$$\hat{k}^{ref} = \hat{k}^{inc} - 2\hat{n}(\hat{k}^{inc} \cdot \hat{n}) \tag{7}$$

Inserting the TE reflection coefficient R_{TE} , the electric E_{TE}^{ref} and magnetic H_{TE}^{ref} reflected fields are:

$$\begin{aligned} E_{TE}^{ref} &= R_{TE} E_{TE}^{inc} \hat{e}_{TE} \\ H_{TE}^{ref} &= \frac{1}{\eta_1} R_{TE} E_{TE}^{inc} \hat{s}_{TM} = \frac{1}{\eta_1} R_{TE} E_{TE}^{inc} (\hat{k}^{ref} \times \hat{e}_{TE}) \end{aligned} \tag{8}$$

Considering that

$$\begin{aligned} E_{TE,TM}^{tot} &= E_{TE,TM}^{inc} + E_{TE,TM}^{ref} \\ H_{TE,TM}^{tot} &= H_{TE,TM}^{inc} + H_{TE,TM}^{ref} \end{aligned} \tag{9}$$

and introducing Eq. (8) in Eq. (9), the total fields for the TE component are:

$$\begin{aligned} E_{TE}^{tot} &= E_{TE}^{inc} (1 + R_{TE}) \hat{e}_{TE} \\ H_{TE}^{tot} &= \frac{1}{\eta_1} E_{TE}^{inc} [(\hat{k}^{inc} \times \hat{e}_{TE}) + R_{TE} (\hat{k}^{ref} \times \hat{e}_{TE})] \end{aligned} \tag{10}$$

3.1.2 TM component

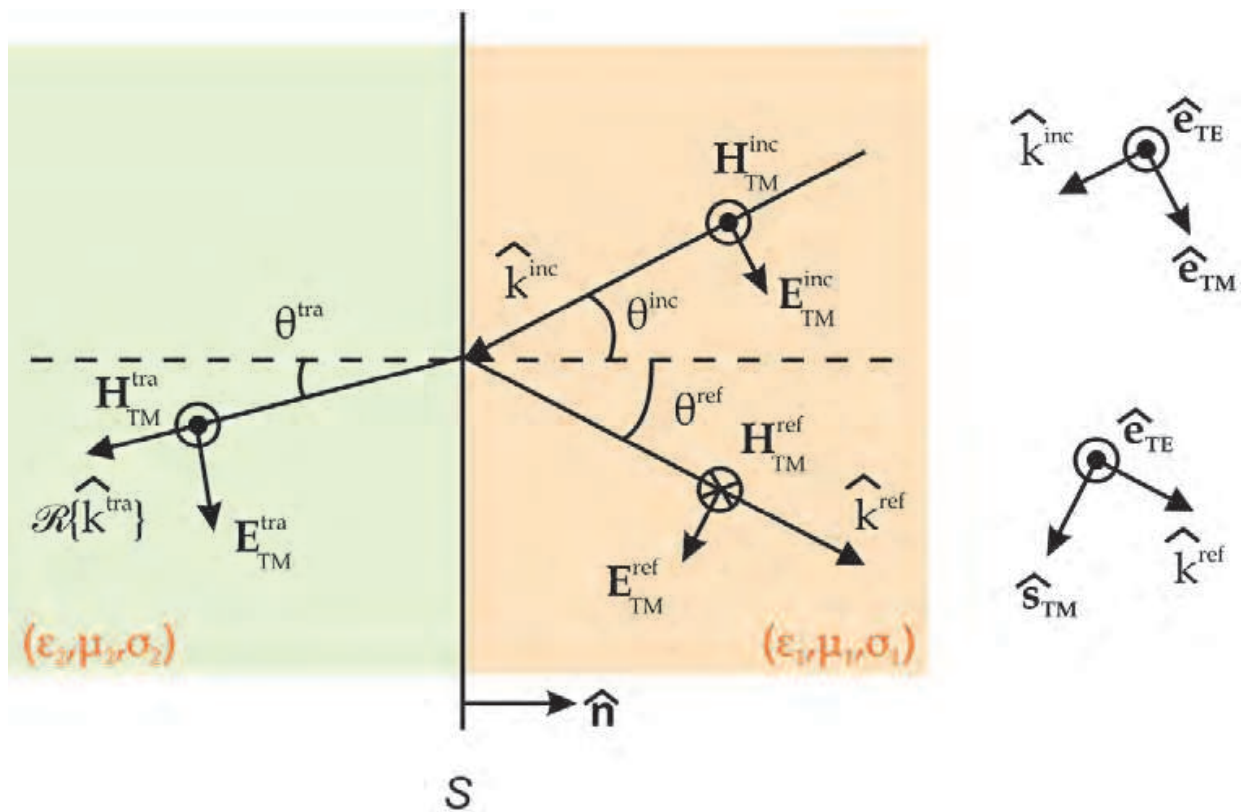


Fig. 3. Field decomposition. TM component.

In Fig. 3 the same directions of incidence, reflection and transmission as well as the boundary S are again depicted. In addition, the TM components of the fields are plotted. In accordance with the reasoning in the previous section, the expressions for the total fields can be obtained, leading to:

$$\begin{aligned} E_{TM}^{tot} &= E_{TM}^{inc} \left[\hat{e}_{TM} + R_{TM} (\hat{k}^{ref} \times \hat{e}_{TE}) \right] \\ H_{TM}^{tot} &= \frac{1}{\eta_1} E_{TM}^{inc} (1 - R_{TM}) \hat{e}_{TE} \end{aligned} \quad (11)$$

3.1.3 MECA equivalent currents

Adding the contributions of the TE and TM components in Eqs. (10) and (11), the total electric and magnetic fields can be written as a function of the incident electric field, the reflection coefficients, the intrinsic impedance of the first medium, the propagation vectors and the unit vector \hat{e}_{TE} :

$$\begin{aligned} E^{tot} &= E^{inc} + R_{TE} E_{TE}^{inc} \hat{e}_{TE} + R_{TM} E_{TM}^{inc} (\hat{k}^{ref} \times \hat{e}_{TE}) \\ H^{tot} &= \frac{1}{\eta_1} \hat{k}^{inc} \times E^{inc} + \frac{1}{\eta_1} \left[R_{TE} E_{TE}^{inc} (\hat{k}^{ref} \times \hat{e}_{TE}) - R_{TM} E_{TM}^{inc} \hat{e}_{TE} \right] \end{aligned} \quad (12)$$

Going back to the boundary conditions, the MECA equivalent current densities are reckoned from the total fields at S in Eq. (12), being the magnetic ones no longer zero:

$$\begin{aligned} J^{MECA} &= \hat{n} \times H^{tot} \Big|_S = \\ &= \frac{1}{\eta_1} \left\{ E_{TE}^{inc} \cos \theta^{inc} (1 - R_{TE}) \hat{e}_{TE} + E_{TM}^{inc} (1 - R_{TM}) (\hat{n} \times \hat{e}_{TE}) \right\} \Big|_S \\ M^{MECA} &= -\hat{n} \times E^{tot} \Big|_S = \left\{ E_{TE}^{inc} (1 + R_{TE}) (\hat{e}_{TE} \times \hat{n}) + E_{TM}^{inc} \cos \theta^{inc} (1 + R_{TM}) \hat{e}_{TE} \right\} \Big|_S \end{aligned} \quad (13)$$

As it can be seen and remarked in the previous expressions, the amplitude and phase of the current densities depend on the polarization and also on the angle of incidence θ^{inc} of the incident wave.

3.1.4 TE and TM reflection coefficients

In order to complete the evaluation of the MECA current densities, R_{TE} and R_{TM} have to be determined before moving to the calculation of the electromagnetic fields at the observation points. For this task, the boundary condition for the continuity of the tangential components of the electric and magnetic fields at the boundary S is utilised.

The general dispersion relation applied to the second isotropic medium allows the evaluation of the transmission propagation vector \hat{k}^{tra} (its real part is depicted in Fig. 2 and Fig. 3) due to

$$k \cdot k = \omega^2 \mu_1 \left(\epsilon_1 - \frac{j\sigma_1}{\omega} \right) \quad (14)$$

where $k = [k_1 \ k_2 \ k_3]$ denotes any propagation vector, the subscript i refers to the first ($i = 1$) or second medium ($i = 2$) and $\omega = 2\pi f$, with f being the working frequency. If $\sigma_i \neq 0$, the right hand side of Eq. (14) is a complex number and the analysis is better performed introducing the real and imaginary parts of the vector k , denoted by $\Re\{k\}$ and $\Im\{k\}$ respectively. Particularising for the reflection and transmission propagation vectors:

$$\left\{ \begin{array}{l} |\Re\{k^{ref}\}|^2 - |\Im\{k^{ref}\}|^2 = \omega^2 \mu_1 \varepsilon_1 \\ 2\Re\{k^{ref}\} \cdot \Im\{k^{ref}\} = 0 \\ |\Re\{k^{tra}\}|^2 - |\Im\{k^{tra}\}|^2 = \omega^2 \mu_2 \varepsilon_2 \\ 2\Re\{k^{tra}\} \cdot \Im\{k^{tra}\} = -\omega \mu_2 \sigma_2 \end{array} \right. \quad (15)$$

The continuity condition at S for the first component of the propagation vector means that

$$\Re\{k_1^{inc}\} = \Re\{k_1^{ref}\} = \Re\{k_1^{tra}\} = \frac{2\pi}{\lambda_1} \sin \theta^{inc} \quad (16)$$

where λ_1 is the wavelength in the first medium and

$$\Im\{k_1^{inc}\} = \Im\{k_1^{ref}\} = \Im\{k_1^{tra}\} = 0 \quad (17)$$

Inserting Eqs. (16) and (17) in Eq. (15), the real and imaginary parts of the third component of the transmission propagation vector are obtained as:

$$\Re\{k_3^{tra}\} = \frac{1}{\sqrt{2}} \left[\Re\{k^{tra2}\} - \left(\frac{2\pi}{\lambda_1}\right)^2 \sin^2 \theta^{inc} + \sqrt{\Re\{k^{tra2}\} - \left(\frac{2\pi}{\lambda_1}\right)^2 \sin^2 \theta^{inc} + \Im\{k^{tra2}\}} \right]^{1/2} \quad (18)$$

$$\Im\{k_3^{tra}\} = \frac{\Im\{k^{tra2}\}}{2\Re\{k_3^{tra}\}}$$

Once $k_3^{tra} = \Re\{k_3^{tra}\} + j\Im\{k_3^{tra}\}$ is determined, R_{TE} is (Staelin et al., 1993)

$$R_{TE} = \frac{\mu_2 \frac{2\pi}{\lambda_1} \cos \theta^{inc} - \mu_1 k_3^{tra}}{\mu_2 \frac{2\pi}{\lambda_1} \cos \theta^{inc} + \mu_1 k_3^{tra}} \quad (19)$$

and the corresponding R_{TM} is

$$R_{TM} = -\frac{\left(\varepsilon_2 - j\frac{\sigma_2}{\omega}\right) \frac{2\pi}{\lambda_1} \cos \theta^{inc} - \varepsilon_1 k_3^{tra}}{\left(\varepsilon_2 - j\frac{\sigma_2}{\omega}\right) \frac{2\pi}{\lambda_1} \cos \theta^{inc} + \varepsilon_1 k_3^{tra}} \quad (20)$$

In case of working with non-metallic obstacles, the reflection coefficients become the well-known and simpler Snell's expressions where the calculation of R_{TE} and R_{TM} is straightforward.

When the second medium is a PEC ($\sigma_2 \rightarrow \infty$), the absolute value of the third component of k^{tra} tends to infinite and consequently $R_{TE} = -1$ as well as $R_{TM} = -1$. Substituting these values in Eq. (12), the total magnetic field equals $2H^{inc}$ at the boundary S . Therefore, J^{MECA} and M^{MECA} in Eq. (13) reduces to J^{PO} and M^{PO} in Eq. (2).

3.2 Electromagnetic field levels

Once J^{MECA} and M^{MECA} can be calculated with the inclusion of the reflection coefficients in the previous section, the evaluation of the scattered fields due to this set of equivalent current densities on the surface of an obstacle requires solving a radiation integral. For arbitrary distributions and geometries, an analytical solution can not be reached. As a consequence, two assumptions are imposed (Arias et al. 2000; Lorenzo et al., 2005):

- The incident wave is a plane wave.
- The obstacle consists of flat triangular facets.

With the objective of distinguishing between the reflected fields at the boundary and the scattered fields at the observation points, the latter are denoted by E^s and H^s . Note that these do not take into account the contribution of the diffraction phenomenon.

3.2.1 Incident plane wave approximation

The position vector \vec{r}' of a point on the surface of a flat triangular facet can be written as:

$$\vec{r}' = \vec{r}_i + \vec{r}'' \tag{21}$$

where \vec{r}_i is the position vector of the barycentre of the i -th facet and \vec{r}'' is the vector from the barycentre to the source point (see Fig. 4).

The current densities are particularised for the i -th facet, J_i^{MECA} and M_i^{MECA} , having constant amplitudes, $J_{i0}^{MECA} = J_i^{MECA} \Big|_{\vec{r}=\vec{r}_i}$ and $M_{i0}^{MECA} = M_i^{MECA} \Big|_{\vec{r}=\vec{r}_i}$ and a linear phase distribution which varies with the unit direction of the Poynting vector as:

$$\hat{p}_i = \frac{\Re \left\{ E_i^{inc} \times (H_i^{inc})^* \right\}}{\left| \Re \left\{ E_i^{inc} \times (H_i^{inc})^* \right\} \right|} \tag{22}$$

where E_i^{inc} and H_i^{inc} are the incident electric and magnetic fields at \vec{r}_i respectively, and $*$ denotes the complex conjugate value of the complex vector in brackets. Therefore, in a medium where the working wavelength is λ_1 ,

$$\begin{aligned} J_i^{MECA} &= J_{i0}^{MECA} \exp \left\{ j 2\pi / \lambda_1 \hat{p}_i \cdot \vec{r}'' \right\} \\ M_i^{MECA} &= M_{i0}^{MECA} \exp \left\{ j 2\pi / \lambda_1 \hat{p}_i \cdot \vec{r}'' \right\} \end{aligned} \tag{23}$$

The reason to introduce the linear phase variation is that this technique allows employing larger facets than when assuming a constant phase distribution.

3.2.2 Application to flat triangular facets

In order to analytically evaluate the radiation integral, the observation points \vec{r} are supposed to be in the far field of the radiating facet – but not necessarily in the far field of the whole scenario. Most of times this constraint is not an additional restriction because applications, such as radar cross section, directly impose huge distances between the object under test and the coordinates where the fields are determined.

Mathematically, the magnitude of the vector between the source point \vec{r}' and the observation point \vec{r} is approximated (Balanis, 1989) by the magnitude of the latter $|\vec{R}| = |\vec{r} - \vec{r}'| \approx |\vec{r}| \equiv r$. The phase is taken as $\angle \vec{R} = \angle \vec{r} - \vec{r}' \approx \angle r - \hat{r} \cdot \vec{r}'$, where $\hat{r} = \vec{r}/|\vec{r}|$.

The formulation to compute the scattered fields can be derived from the Maxwell's equations, e.g. using the magnetic vector potential A and the electric potential vector F separately and combining both solutions. The resulting expressions are written in terms of the Green's function in unbounded media G and its gradient ∇G . The far field approximation allows expressing these functions as:

$$G = \frac{1}{4\pi} \frac{\exp\{-j2\pi/\lambda_1 |\vec{R}|\}}{|\vec{R}|} \approx \frac{1}{4\pi} \frac{\exp\{-j2\pi/\lambda_1 r\}}{r} \exp\{j2\pi/\lambda_1 \hat{r} \cdot \vec{r}'\} \quad (24)$$

$$\nabla G = -j2\pi/\lambda_1 G \hat{R} \left(1 + \frac{1}{j2\pi/\lambda_1 R} \right) \approx -j2\pi/\lambda_1 G \hat{r}$$

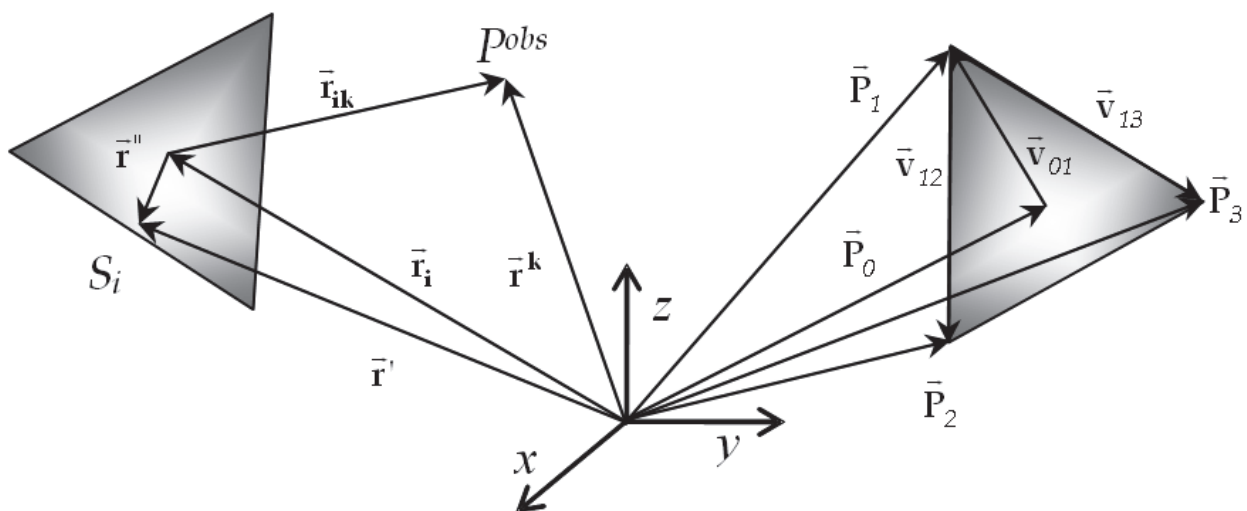


Fig. 4. Coordinate system and nomenclature for the triangular facets: on the left, for section 3.2.1 and on the right, for section 3.2.2.

Consequently, the scattered fields are:

$$E^s \approx \frac{j}{2\lambda_1} \frac{\exp\left\{-j2\pi/\lambda_1 \mathbf{r}\right\}}{r} \int_S \left[\hat{\mathbf{r}} \times M^{MECA} - \left(\hat{\mathbf{r}} \times \eta_1 J^{MECA} \times \hat{\mathbf{r}} \right) \right] \exp\left\{j2\pi/\lambda_1 \hat{\mathbf{r}} \cdot \vec{\mathbf{r}}'\right\} \partial s' \quad (25)$$

$$H^s \approx -\frac{j}{2\lambda_1} \frac{\exp\left\{-j2\pi/\lambda_1 \mathbf{r}\right\}}{r} \int_S \left[\hat{\mathbf{r}} \times J^{MECA} - \left(\hat{\mathbf{r}} \times \hat{\mathbf{r}} \times \frac{1}{\eta_1} M^{MECA} \right) \right] \exp\left\{j2\pi/\lambda_1 \hat{\mathbf{r}} \cdot \vec{\mathbf{r}}'\right\} \partial s'$$

and they can be simplified inserting the auxiliary vectors E^a and H^a

$$E^s \approx \frac{j}{2\lambda_1} \frac{\exp\left\{-j2\pi/\lambda_1 \mathbf{r}\right\}}{r} \left[E^a - \eta_1 H^a \times \hat{\mathbf{r}} \right] \quad (26)$$

$$H^s \approx -\frac{j}{2\lambda_1} \frac{\exp\left\{-j2\pi/\lambda_1 \mathbf{r}\right\}}{r} \left[H^a - \frac{1}{\eta_1} \hat{\mathbf{r}} \times E^a \right]$$

with

$$E^a = \int_S \hat{\mathbf{r}} \times M^{MECA} \exp\left\{j2\pi/\lambda_1 \hat{\mathbf{r}} \cdot \vec{\mathbf{r}}'\right\} \partial s' \quad (27)$$

$$H^a = \int_S \hat{\mathbf{r}} \times J^{MECA} \exp\left\{j2\pi/\lambda_1 \hat{\mathbf{r}} \cdot \vec{\mathbf{r}}'\right\} \partial s'$$

Considering that the expressions of E^a and H^a are quite similar, the following reasoning is only performed for the magnetic fields, so the contribution due to the electric current density J^{MECA} on the i -th facet at the observation point $\vec{\mathbf{r}}^k$ is given by:

$$H_{ik}^a = \exp\left\{j2\pi/\lambda_1 \hat{\mathbf{r}}_{ik} \cdot \vec{\mathbf{r}}_i\right\} \int_{S_i} \left(\hat{\mathbf{r}}_{ik} \times J_i^{MECA} \right) \exp\left\{j2\pi/\lambda_1 \hat{\mathbf{r}}_{ik} \cdot \vec{\mathbf{r}}''\right\} \partial s_i' \quad (28)$$

where S_i refers to the surface of the i -th facet and $\hat{\mathbf{r}}_{ik}$ is the unit vector from the barycentre of that facet to the observation point k . Substituting J_i^{MECA} by its expression in Eq. (23), where the constant amplitude and linear phase variation distributions were inserted and extracting the terms from the integrand, Eq. (28) is rewritten as:

$$H_{ik}^a = \exp\left\{j2\pi/\lambda_1 \hat{\mathbf{r}}_{ik} \cdot \vec{\mathbf{r}}_i\right\} \left(\hat{\mathbf{r}}_{ik} \times J_{i0}^{MECA} \right) I(\hat{\mathbf{r}}_{ik}) \quad (29)$$

$$I(\hat{\mathbf{r}}_{ik}) = \int_{S_i} \exp\left\{j2\pi/\lambda_1 (\hat{\mathbf{r}} - \hat{\mathbf{p}}_i) \cdot \vec{\mathbf{r}}''\right\} \partial s_i'$$

In case of dealing with flat triangular facets, $\vec{\mathbf{r}}''$ can be expressed as a function of the vectors $\vec{\mathbf{v}}_{mn}$ in Fig. 4:

$$\vec{\mathbf{r}}'' = \bar{v}_{01} + f\bar{v}_{12} + g\bar{v}_{13} \quad (30)$$

with $\vec{v}_{mn} = \vec{P}_n - \vec{P}_m$, being \vec{P}_l the position vector of the vertices $l = 1, 2, 3$ of the facet and \vec{P}_0 , the position vector of the barycentre. f and g are real coefficients. Taking into account this transformation, the integral in Eq. (29) is converted into:

$$I(\hat{r}) = 2A \exp\left\{-j\frac{a+b}{3}\right\} \int_0^{1-f} \int_0^f \exp\{j(af+bg)\} \partial g \partial f \quad (31)$$

where A is the area of the facet and the values of a and b are defined as:

$$\begin{aligned} a &= \frac{2\pi}{\lambda_1} \vec{v}_{12} \cdot (\hat{r} - \hat{p}_i) \\ b &= \frac{2\pi}{\lambda_1} \vec{v}_{13} \cdot (\hat{r} - \hat{p}_i) \end{aligned} \quad (32)$$

The solution to the Eq. (31) is obtained by parts, but in order to overcome some singularities, five different cases are detailed (Arias et al. 2000) in Table 1.

a	b	$I(\hat{r})$
Any	Any	$2A \exp\left\{-j\frac{a+b}{3}\right\} \left[\frac{a \exp\{jb\} - b \exp\{ja\} + b - a}{(a-b)ab} \right]$
0	Any	$2A \exp\left\{-j\frac{b}{3}\right\} \left[\frac{1 + jb - \exp\{jb\}}{b^2} \right]$
Any	0	$2A \exp\left\{-j\frac{a}{3}\right\} \left[\frac{1 + ja - \exp\{ja\}}{a^2} \right]$
0	0	A
Any	a	$2A \exp\left\{-j\frac{2a}{3}\right\} \left[\frac{\exp\{ja\}(1-ja) - 1}{a^2} \right]$

Table 1. Solution to the integral in Eq. (31). Different cases are presented to overcome the singularities in the original expression.

The formulation of the Modified Equivalent Current Approximation method is completed once all the intermediate results that have been described in this section are combined to evaluate the scattered fields at a specific observation point because of one radiating facet. Until this point, the steps to follow are summarised in:

- Decompose the incident electric field into its TE and TM components.
- Obtain the reflection coefficients in Eqs. (19) and (20).
- Calculate the MECA electric and magnetic current densities in Eq. (13).
- Particularise the expressions for the barycentre of every radiating facet.
- Compute the integral $I(\hat{r}_{ik})$ with the help of Table 1.

- Evaluate the auxiliary fields E^a and H^a introducing the expressions of the MECA current densities and the result of the radiation integral.
 - Calculate the scattered fields E^s and H^s
- Afterwards, the superposition theorem is employed to add the contribution due to all the radiating facets in the geometry for the observation point k :

$$H_k^s = \sum_i H_{ik}^s \quad (33)$$

If an evaluation of the line of sight between the radiating sources and the obstacle were necessary because of its shape, this task would be faced at the beginning of the whole.

3.3 Validation schemes

In this section, two canonical examples for different constitutive parameters and geometries are presented: one assures the good behaviour in high frequency and the other consists in the analysis of electrically large surfaces. In the first scenario, the validation is accomplished in terms of the Radar Cross Section (RCS) which is calculated as:

$$\text{RCS} = 4\pi \lim_{r \rightarrow \infty} r^2 \frac{|E|^2}{|E^{inc}|^2} \quad (34)$$

Since the field levels due to the diffraction contribution are not significant in the selected examples, this effect can be neglected in the computation of the RCS. Consequently, the term in the numerator E only takes into account the electric field levels owing to reflections on the surface.

The methods to contrast the results provided by MECA are an analytical solution taken from the references and the full-wave technique the Method of Moments (MoM) (Medgyesi-Mitschang et al., 1994).

3.3.1 High frequency behaviour

As a high frequency technique, MECA has to show an accurate behaviour when the dimensions of the obstacle are large in comparison with the working wavelength. A good example to test this is a sphere, whose monostatic RCS can be obtained theoretically for both PEC (Balanis, 1989) and non-metallic (Van-Bladel, 2007) characterisations. A frequency sweep is performed for a sphere of radius a with relative permittivity and permeability of $\epsilon_r = 2.2$, $\mu_r = 1.1$ respectively and conductivity of $\sigma = 7\omega\epsilon_0$, being $\epsilon_0 = 8.854 \cdot 10^{-12}$ F/m, for the lossy case. The region in Fig. 5 for $2\pi/\lambda r > 10$ corresponds to the high frequency zone where a great coincidence in the results can be observed.

3.3.2 Electrically large surfaces

In this setup, a resonant horizontal dipole is placed at a fixed position whose height is of $h=1.5$ metres above an electrically large flat surface as depicted in Fig. 6. The position of the observation point P^{obs} is determined by two correlated variables: the horizontal distance from the source to P^{obs} , denoted by d and the height of P^{obs} , denoted by H . The angle ν is defined with the purpose of representing the results.

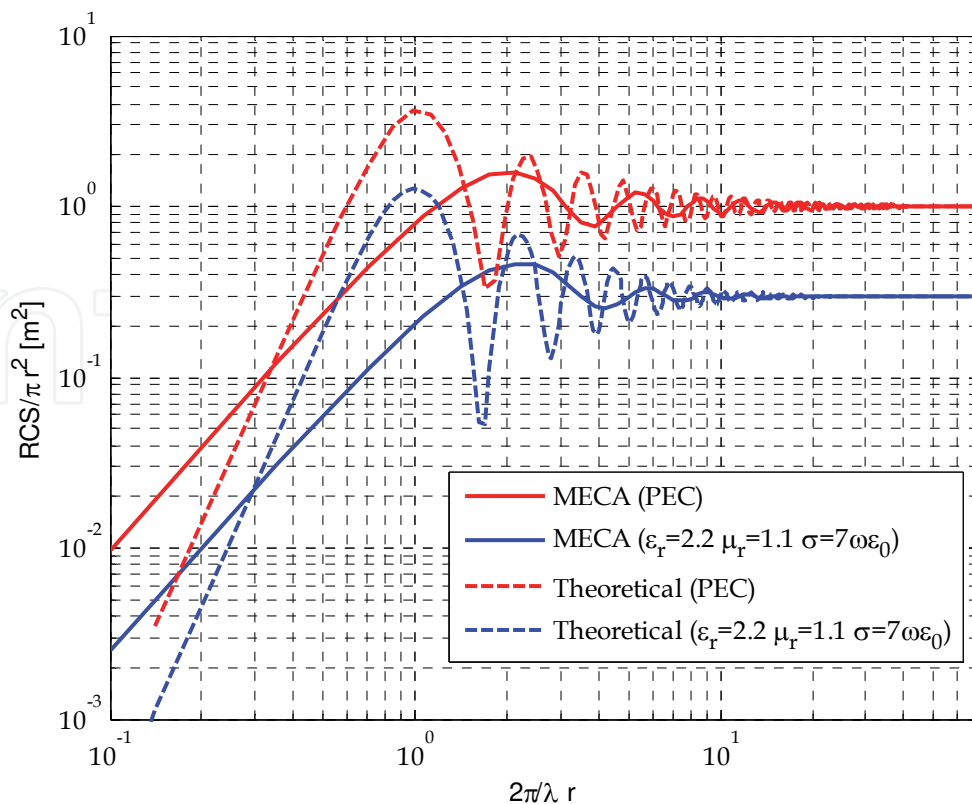


Fig. 5. Monostatic RCS of a sphere. PEC and lossy characterization ($\epsilon_r = 2.2$, $\mu_r = 1.1$, $\sigma = 7\omega\epsilon_0$).

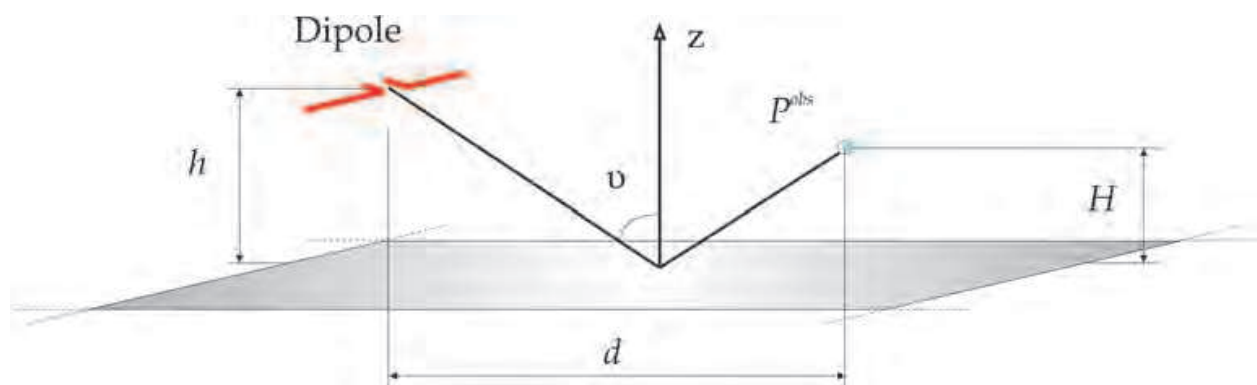


Fig. 6. Scheme for testing electrically large surfaces. The dipole is placed horizontally at a height h . The position of the observation points varies with the distance from the dipole d . For the sake of clarity in the representation of the results, the angle ν has been inserted.

For the working frequency of 1800 MHz and the values of H ranging from 1 to 35 metres, the magnitude of the total electric field $|E^{tot}|$, including the direct illumination from the source, is evaluated. In Fig. 6 MECA results are compared with those by MoM (Medgyesi-Mitschang, 1994) for the following constitutive parameters: $\epsilon_r = 3.5$, $\mu_r = 1$ and $\sigma = 0.5 \text{ S/m}$. On the left, $|E^{tot}|$ is plotted as a function of ν , while on the right the variable is the logarithm of the distance d in wavelengths, d_λ , so the small deviation –less than 2dB in the worst case– can be appreciated. Consequently, a high degree of overlapping in the

curves of MoM and MECA clearly demonstrates the accuracy of the high frequency technique.

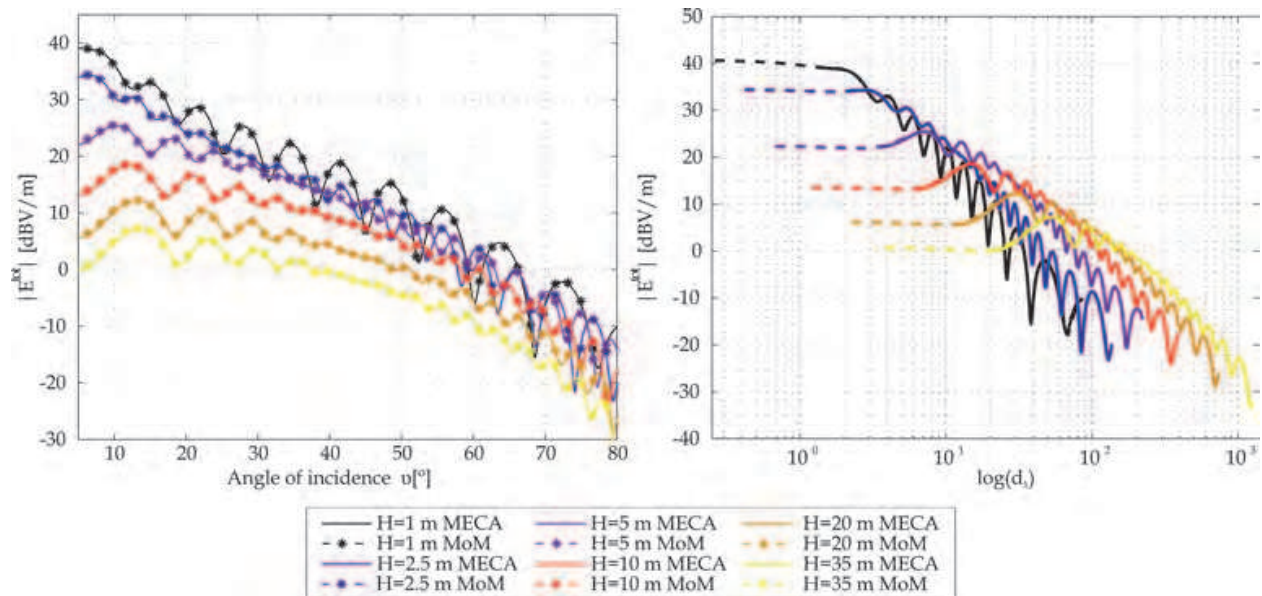


Fig. 7. Magnitude of the total electric field for the electrically large surface configuration. On the left, the results have been represented as a function of the angle ν and on the right, as a function of the logarithm of the distance in wavelengths. MECA and MoM show a great coincidence.

4. Fast visibility algorithm for solving the visibility problem

Because MECA (also PO) predicts null equivalent current densities in shadowed regions and non-null equivalent current densities in those regions with line of sight from the source point, a distinction between non-illuminated and illuminated surfaces is mandatory prior to the evaluation of electromagnetic levels at the observation points. This distinction is known as the visibility problem and it is widely found in computer graphics (Dewey, 1988; Foley, 1992; Bittner & Wonka, 2003), e.g. virtual reality or games, but also in the context of electromagnetic problems such as radio electric coverage evaluation or tracking applications in radar.

Within the classic algorithms, the Z-buffer and the Painter's algorithm can be cited. Assuming the screen in the XY plane, both are based on the identification of the z-coordinate of the elements in the geometry to finally project the nearest parts of the objects. Another method is the Binary Space Partitioning (BSP) (Fuch et al. 1980; Gordon & Chen, 1991) which recursively divides the space into front and back semi-spaces, creating a binary tree at the same time. Afterwards, and in accordance with the target direction, the tree is walked and a priority list of the facets can be built.

Most of the techniques to solve the visibility problem are thought to project an image onto a display unit, so the algorithm itself has not better resolution than the pixel size. Therefore, an error is introduced, although almost imperceptible to the human eye. In order to overcome it, solutions where no approximations are made can be implemented. For example, in the Trimming method (Meana et al., 2009) when a piece of surface is partially

occluded by other one, only the region in shadow is trimmed and removed from the original geometry. At the end, the remaining surface is the exact part that can be seen from a specific point of view. This type of algorithms is very time consuming but its precision counteracts this disadvantage.

To speed up the computation of the existing techniques, some modifications in the phase of preprocessing can be inserted. One option to carry out this is to split the scenario into parallelepipedic or conic macrodomains. Then the facets are classified in one or other macrodomain depending on their position. As a consequence, a preliminary discrimination is accomplished by blocks, so the facets are discarded faster. In this category, the Angular Z-buffer (AZB) (Cátedra et al., 1998) or the Space Volumetric Partitioning (SVP) (Cátedra & Arriaga, 1999) is included.

Additional acceleration can be achieved when the same algorithms are developed in Graphic Processing Units (GPUs) instead of Central Process Units (CPUs) (Ricks & Kuhlen, 2010). Fortunately, this is not restricted to visibility algorithms but it is suitable for all kind of algorithms consisting of loops, matrix operations, etc. As a consequence, generic GPUs are being extensively utilised to run the codes with smaller costs in comparison with CPU parallelisation. Even more, thanks to the use of libraries, e.g. DirectX or OpenGL (Shreiner, 2004) or the interaction between Matlab® and the graphic cards by means of the free plug-in by Nvidia® or Jacket by AccelerEyes®, the implementation of the routines turns into less complex programming.

In the following section the Pyramid method (Meana et al., 2009) is described due to its suitability to deal with flat triangular facets. Briefly, a right pyramid is built so that its vertex coincides with the source point. The i -th wall is the plane containing the source point and the i -th edge of the facet under test. Thus, a point behind this facet and inside the walls of the pyramid is occluded. This is a fast operation that is accomplished by substituting the coordinates of the observation point in the equation of the plane for all the walls.

4.1 Pyramid method

The scenario consists of N facets which have been sorted by their distance from the source point \vec{s} to their barycentres, so the closest facet, denoted by F_1 , is always seen. Additionally, the origin of the coordinate system has been moved to the coordinates of \vec{s} .

In order to know whether a facet F_j occludes a generic point in the geometry \vec{P} , the plane in which F_j is contained is defined:

$$\hat{n}^j \cdot ([x \ y \ z] - \vec{P}_0^j) = 0 \quad (35)$$

where \hat{n}^j is the unit outward normal vector and \vec{P}_0^j is the barycentre of F_j . Similarly, the three planes containing one of the edges of the F_j and \vec{s} are written as:

$$\frac{\vec{V}_2^j \times \vec{V}_1^j}{|\vec{V}_2^j \times \vec{V}_1^j|} \cdot \vec{P} = 0, \quad \frac{\vec{V}_3^j \times \vec{V}_2^j}{|\vec{V}_3^j \times \vec{V}_2^j|} \cdot \vec{P} = 0, \quad \frac{\vec{V}_1^j \times \vec{V}_3^j}{|\vec{V}_1^j \times \vec{V}_3^j|} \cdot \vec{P} = 0 \quad (36)$$

with \vec{V}_i^j being the position vector of the i -th vertex ($i = 1, 2, 3$) of F_j . These planes constitute the walls of the pyramid whose base is the facet under test. There are two conditions to conclude that \vec{P} can not be seen from the source point:

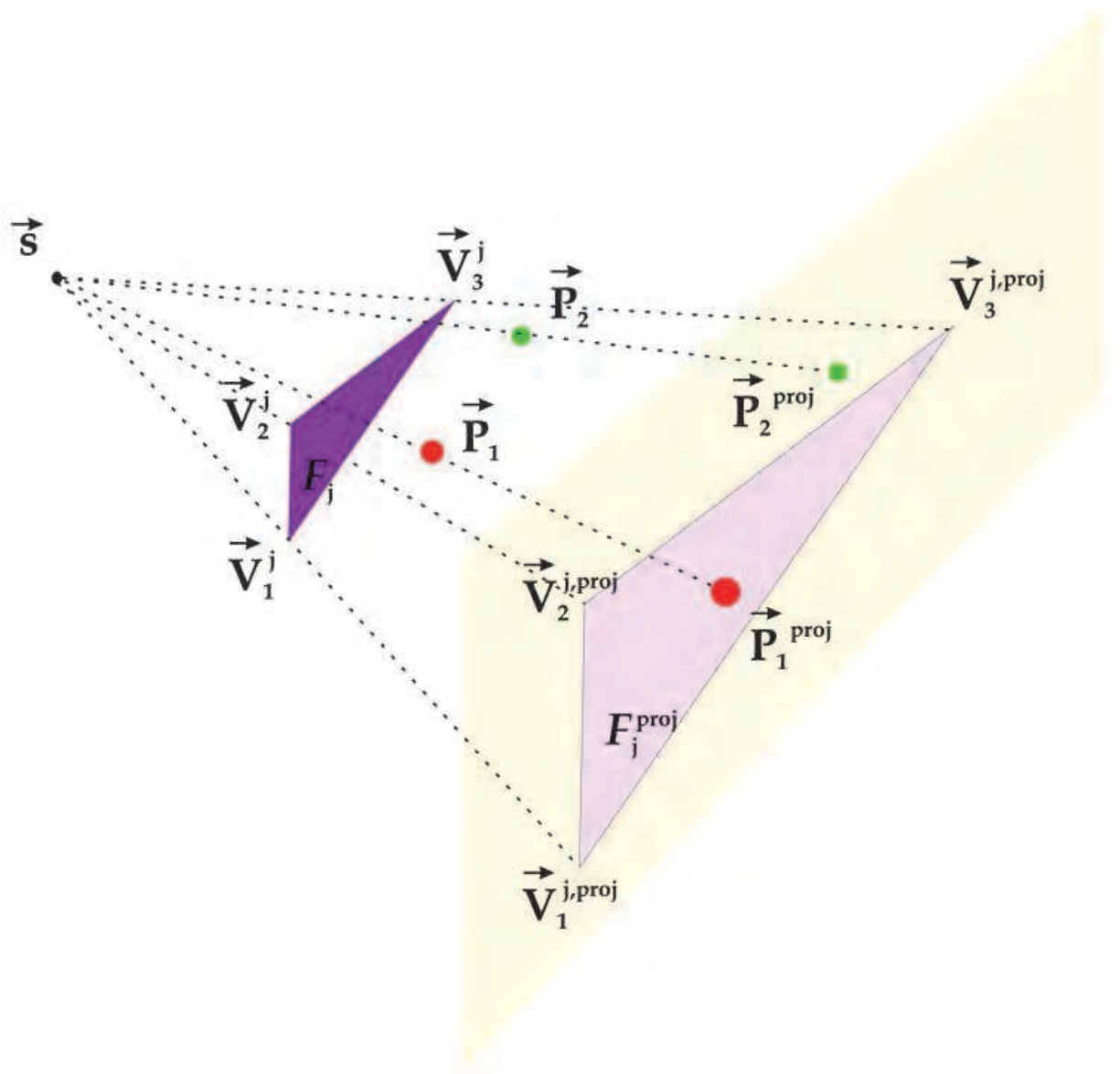


Fig. 8. Pyramid method. In the image, a projection plane in light yellow has been selected in order to clearly remark that the facet F_j occludes the observation point \vec{P}_1 . On the other hand, \vec{P}_2 has line of sight with the source \vec{s} .

- \vec{P} is behind the plane in Eq. (35)

$$\hat{n}^j \cdot (\vec{P} - \vec{P}_0^j) < 0 \tag{37}$$

- \vec{P} is inside the three walls. An easy way to compute this is:

$$\sum_{i=1}^3 \text{sign} \left\{ \left| \frac{\vec{V}_{i+1}^j \times \vec{V}_i^j}{|\vec{V}_{i+1}^j \times \vec{V}_i^j|} \cdot \vec{P} \right| \right\} = 3 \tag{38}$$

where $\vec{V}_4^j = \vec{V}_1^j$ and the vertices are supposed to be in clockwise or counterclockwise order.

The algorithm determines the occlusion of points by a triangular facet as depicted in Fig. 8, but the Pyramid method can be applied to determine the existence of line of sight among facets. The process to perform this is based on simplifying the representation of the triangles choosing some important points like the barycentre, vertices, inner points and executing the algorithm for them.

Even though the expressions have been particularised for the case of triangular facets, the implementation can be accomplished for any polygon by including additional walls in the pyramid and substituting the upper limit of the summatory in Eq. (38).

A quite similar algorithm to the Pyramid method is the Cone method (Meana et al., 2009), but a right cone is defined instead of a right pyramid. Its radius is a mean value of the distances from the barycentre of the facet under test to each of its vertices. Analogically, any point behind that facet and inside the cone is occluded. This is a faster algorithm because only one operation comparing the cone angle and the angle between the observation point and the axis of the cone is carried out. On the other hand, the exactness diminishes.

5. Application examples

The scope of application of the Modified Equivalent Current Approximation comprises all the problems which have been analysed by means of the Physical Optics traditionally, but also the extension to dielectric and lossy materials. In the following paragraphs some of these fields where MECA could be employed are summarised.

The RCS computation is one of the most cited topics in the literature: from canonical geometries (e.g. spheres, flat plates and dihedrals) (Griesser & Balanis, 1987; Ross, 1966) for contrasting and validating results to electrically large random surfaces and complex targets (ships or airplanes) (Adana et al., 2000; Uluisik et al., 2008) with a remarkable decrease in the computational time in comparison to full wave techniques. The consideration of absorbing materials allows studying the reduction in the radar signature of aircrafts or missiles.

In order to deal with more realistic scenarios in the RCS computation, the analysis of open-ended cavities including reflections and resonances (Burkholder & Lundin, 2005) is also a line of investigation MECA can face. Likewise, MECA has proven a good accuracy when dealing with electrically large rough surfaces (Meana et al., 2010) that can model the sea surface or the orography of a rural environment. Therefore, the evaluation of the electromagnetic levels for RCS or other applications can consider not only the target itself but also its surroundings.

Another field of application is the design of reflector antennas (Boag & Letrou, 2003; Lorenzo et al., 2005) with or without dielectric radomes because of their electric size. They are usually fed by an array of antennas whose radiation pattern is determined to compute the equivalent current densities and to calculate the fields at distances much larger than the wavelength afterwards.

On the other hand, the Physical Optics approximation and its extensions can also provide some reference values to validate new algorithms or the results by some imaging or shape reconstruction techniques (Saeedfar & Barkeshli, 2006). Due to the fact that the illuminating sources are known a priori, the simulation of a set of constitutive parameters and the shape of the objects can be tackled in a fast manner.

Although the high frequency techniques have lost relevance in the recent years due to the Fast Multipole Method (FMM) –developed by Rohklin in the field of acoustic dispersion (Rohklin, 1985; Rohklin, 1990) and then extended to electromagnetic dispersion (Enggheta et

al., 1992) – in joint with multilevel schemes and other acceleration methodologies, the advances in the terahertz band will become notable again in the foreseeable future. This means similar applications but working at higher frequencies where the wavelength is smaller than 1 mm and, as a consequence, most of the obstacles and objects is electrically large. Some papers have already proven the validity of the asymptotic approximations at these frequencies.

In addition to the previously enumerated fields of application of the MECA method and in spite of the typical employment of Ray Tracing and Launching in joint with empirical models to deal with the radioelectric coverage evaluation (Papkelis et al., 2007), this problem must be added to that list. The reason is that it fulfils all the requisites detailed through this chapter. In the next section an application example will be shown.

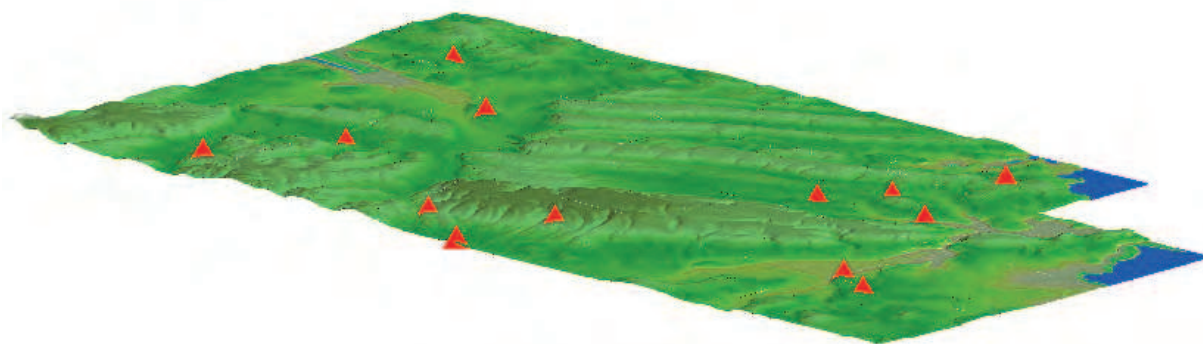


Fig. 9. Rural environment for evaluating the radioelectric coverage. The scenario is 17 km long by 10 km width and the 13 base stations have been depicted in red at their real emplacements.

5.1 Radioelectric coverage

Network planning and optimization in rural and urban environments can be studied for different radiocommunication systems (*Global System for Mobile Communications* –GSM –, *Universal Mobile Telecommunications System* –UMTS – or radio and television broadcasting). This example focuses on the radioelectric coverage evaluation of the *General Packet Radio Service* –GPRS – at the working frequency of 1800 MHz, where the scenario consists of a rural terrain of 17 km long by 10 km wide with a uniform soil characterization, $\epsilon_r = 3$, $\mu_r = 1$, $\sigma = 0.001 \text{ S/m}$. Some relevant information about the scenario is that is mainly compound of mountains and valleys where there are not big villages. Thus, regions with no coverage are expected there while, on the other hand, a town on the right and a freeway at the bottom of the map suggest a better coverage in these areas.

The radio electric stations are located at their real emplacements (see Fig. 10) simulating their electromagnetic behaviour based on the available data, such as configuration parameters (e.g. power, gain), provided by the telecommunications company. As a consequence, the radiation patterns were synthesised assuming a dipole array with a different number of elements for every different antenna. Once the illumination from the sources is explicitly determined, the MECA equivalent current densities are computed and the electromagnetic field levels are calculated.

The power density at the observation points situated at 1.5 metres above the terrain is represented in Fig. 10. A threshold has been obtained by taking into account the sensibility of the receivers, so that the minimum in the colorbar has been fixed in a lower value. This means that any region in dark blue can not initiate or maintain a communication with the base station. In order to improve the coverage in specific zones, new base stations could be added and a fast evaluation can be accomplished by computing only the direct illumination due to those stations.

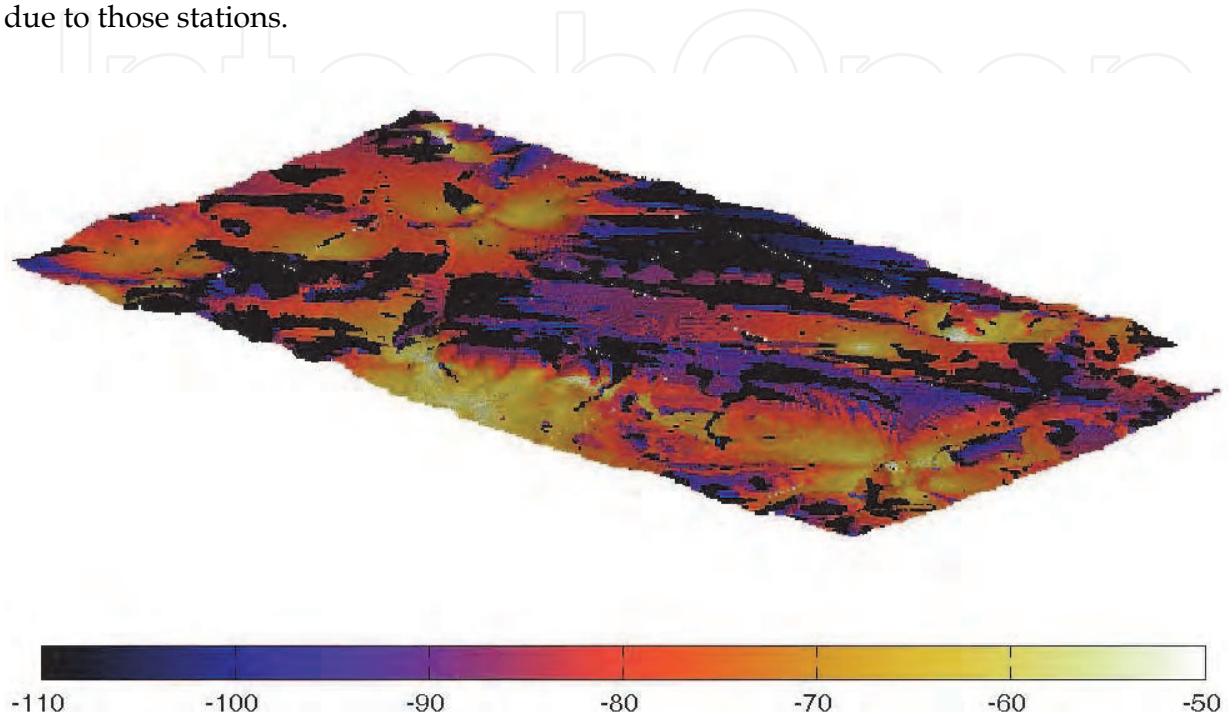


Fig. 10. Power density in dBW/m² for the rural scenario with MECA. The electromagnetic field levels have been evaluated for a penetrable characterization of the terrain given by $\epsilon_r = 3$, $\mu_r = 1$, $\sigma = 0.001$ S/m .

6. Conclusion

In this chapter “*High frequency techniques: the Physical Optics approximation and the Modified Equivalent Current Approximation (MECA)*” the whole process to compute electromagnetic field levels based on the high frequency technique Modified Equivalent Current Approximation has been presented. MECA is an extension of the Physical Optics formulation for penetrable and non-metallic objects based on the equivalence principle, so not only electric but also magnetic equivalent current densities are taken into account for dielectric and lossy materials.

One of the most relevant features of MECA is that the reflection coefficients are calculated from the general dispersion relation for the transversal electric and transversal magnetic components independently. Therefore any conductivity and relative permittivity and permeability are allowed. Then, they are inserted in the corresponding TE/TM analysis which was shown in Fig. 2 and Fig. 3, to be finally combined in order to obtain the MECA equivalent current densities. With the objective of determining the electromagnetic fields at

the observation points analytically, the incident wave is supposed to be a plane wave which impinges on the surface and generates a current density distribution with constant amplitude and linear phase variation. Assuming a flat triangular facet, the radiation integral can be solved by parts.

The good behaviour was proven in the validation examples, where the results from the frequency sweep in the high frequency region agreed the theoretical values. Likewise, an excellent overlapping was obtained for different angles of incidence when dealing with a non-PEC electrically large surface.

Because one of the constraints to employ PO and MECA is the determination of line of sight between the source and the observation points, some algorithms to solve the visibility problem were described. The classic methods are complemented by acceleration techniques and then, they are translated into the GPU programming languages. The Pyramid method was explained as an example of fast algorithm which was specifically developed for evaluating the occlusion by flat facets. Undoubtedly, this can be employed in joint with the MECA formulation, but the Pyramid method can also be helpful in other disciplines of engineering.

Throughout the section “*Application examples*”, the way MECA becomes a powerful and efficient method to tackle different scattering problems for electrically large scenarios was satisfactorily demonstrated by means of the example consisting in the evaluation of the radio electric coverage in a rural environment. In addition to this, other fields of application were suggested from the RCS computation to imaging techniques, covering a wide range of electromagnetic problems.

7. References

- Arias, A.M., Rubiños, J.O., Cuiñas, I., & Pino, A.G. (2000). Electromagnetic Scattering of Reflector Antennas by Fast Physical Optics Algorithms, *Recent Res. Devel. Magnetism*, Vol. 1, No. 1, pp. 43-63
- Adana, F.S. de, Lozano, P., Gisbert, F., Sudupe, I., Pérez, J., & Cátedra, M.F. (2000) Application of the PO to the Computation of the Monostatic RCS of Arbitrary Bodies Modeled by Plane Facets of Dielectric and Magnetic Material, *Proceedings of 2000 USCN/URSI National Radio Science Meeting*, Salt Lake City, Utah, USA, 2000
- Balanis, C. A. (1989). *Advanced Engineering Electromagnetics*, John Wiley & Sons, ISBN 978-0471621942, New York, USA
- Bittner, J., & Wonka, P. (2003). Visibility in Computer Graphics, *Environment and Planning B: Planning and Design*, Vol. 30, No. 5,
- Boag, A., & Letrou, C. (2003). Fast Radiation Pattern Evaluation for Lens and Reflection Antennas. *IEEE Transactions on Antennas and Propagation*, Vol. 51, No. 5, pp. 1063-1068
- Burkholder, R.J. & Lundin, T. (2005). Forward-Backward Iterative Physical Optics Algorithm for Computing the RCS of Open-Ended Cavities. *IEEE Transactions on Antennas and Propagation*, Vol.53, No.2, pp. 793- 799
- Cátedra, M. F., Pérez, J., Sáez de Adana, F., & Gutiérrez O., (1998). Efficient Ray-Tracing Techniques for Three Dimensional Analyses of Propagation in Mobile Communications: Application to Picocell and Microcell Scenarios. *IEEE Antennas and Propagation Magazine*, Vol. 40, No. 2, pp. 15-28

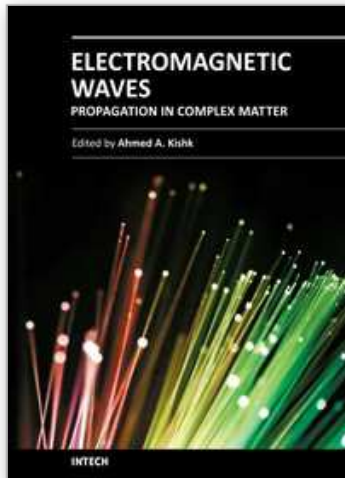
- Cátedra, M.F., & Arriaga, J.P. (1999). *Cell Planning for Wireless Communications*, Artech House, ISBN 978-0890066010, Boston, USA
- Dewey, B.R. (1988). *Computer graphics for Engineers*, Harpercollins College Div., ISBN 978-0060416706, USA
- Engheta, N., Murphy, W.D., Rokhlin, V., & Vassiliou, M.S. (1992). The Fast Multipole Method (FMM) for Electromagnetic Scattering, *IEEE Transactions on Antennas and Propagation*, Vol. 40, No. 6, pp. 634-641
- Foley, J.D. (1992). *Computer Graphics: Principles and Practice in C* (2nd edition), ISBN 0201848406, Addison-Wesley, USA
- Fuch, H., Kedem, Z.M., & Naylor, B.F. (1980). On Visible Surface Generation by Priori Tree Structures. *ACM SIGGRAPH Computer Graphics*, Vol. 14, No. 3, pp. 124-133
- Glassner, A.S. (1989). *An Introduction to Ray Tracing*, Academic Press, ISBN 978-0-12-286160-4, San Diego, USA
- Gordon, D., & Chen, S. (1991). Front-to-Back Display of BSP Trees. *IEEE Computer Graphics and Applications*, Vol. 11, No. 5, pp. 79-85
- Griesser, T., & Balanis, C. (1987). Backscatter Analysis of Dihedral Corner Reflectors Using Physical Optics and the Physical Theory of Diffraction, *IEEE Antennas and Propagation Magazine*, Vol. 35, No. 10, pp. 1137-1147
- Harrington, R.F. (2001). *Time-Harmonic Electromagnetic Fields* (2nd edition), McGraw Hill, ISBN 978-0471208068, USA
- Hodges, R.E., & Rahmat-Samii, Y. (1993). Evaluation of Dielectric Physical Optics in Electromagnetic Scattering, *Proceedings 1993 Antennas and Propagation Society International Symposium*, USA, 1993
- Keller, J.B. (1962). Geometrical Theory of Diffraction. *Journal of the Optical Society of America*, Vol. 52, No. 3, pp. 116-130
- Kempel, L.C., Chatterjee, A., & Volakis, J.L. (1998). *Finite Element Method Electromagnetics* (1st edition), IEEE, USA
- Lorenzo, J. A. M., Pino, A. G., Vega, I., Arias, M., & Rubiños, O. (2005). ICARA: Induced-Current Analysis of Reflector Antennas. *IEEE Antennas and Propagation Magazine*, Vol.47, No.2, pp. 92-100
- Meana, J. G., Las-Heras, F., & Martínez-Lorenzo, J. Á. (2009). A Comparison Among Fast Visibility Algorithms Applied to Computational Electromagnetics. *Applied Computational Electromagnetics Society Journal*, Vol.24, No.3, pp. 268-280
- Meana, J. G., Martínez-Lorenzo, J. Á., Las-Heras, F., & Rappaport, C. (2010). Wave Scattering by Dielectric and Lossy Materials Using the Modified Equivalent Current Approximation (MECA). *IEEE Transactions on Antennas and Propagation*, Vol. 58, No. 11, pp. 3757-3761
- Medgyesi-Mitschang, L.N., Putnam, J.M., & Gedera, M.B. (1994). Generalized Method of Moments for Three-Dimensional Penetrable Scatterers, *Journal of the Optical Society of America A*, Vol. 11, No. 4, pp. 1383-1398
- Pathak, P.H., & Kouyoumjian, R.G. (1974). A Uniform Geometrical Theory of Diffraction for an Edge in a Perfectly Conducting Surface. *Proceedings of the IEEE*, Vol. 62, No. 11, pp. 1448-1461

- Papkelis, E.G., Psarros, I., Ouranos, I.C., Moschovitis, C.G., Karakatselos, K.T., Vagenas, E., Anastassiou, H.T., & Frangos, P.V. (2007). A Radio-Coverage Prediction Model in Wireless Communication Systems Based on Physical Optics and the Physical Theory of Diffraction. *IEEE Antennas and Propagation Magazine*, Vol. 49, No. 2, pp. 156-165
- Rappaport, C.M., & McCartin, B.J. (1991). FDFD Analysis of Electromagnetic Scattering in Anisotropic Media Using Unconstrained Triangular Meshes. *IEEE Transactions on Antennas and Propagation*, Vol. 39, No. 3, pp. 345-349
- Rengarajan, S.R., & Gillespie, E.S. (1988). Asymptotic Approximations in Radome Analysis. *IEEE Transactions on Antennas and Propagation*, Vol. 36, No. 3, pp. 405-414
- Ricks, T., & Kuhlen, T. (2010). Accelerating Radio Wave Propagation Algorithms by Implementation on Graphics Hardware, In: *Wave Propagation in Materials for Modern Applications*, Andrey Petrin, pp. 103-122, Intech, Vienna, Austria
- Rokhlin, V. (1985). Rapid Solution of Integral Equations of Classical Potential Theory. *Journal of Computational Physics*, Vol. 60, No. 9, pp. 187-207
- Rokhlin, V. (1990). Rapid Solution of Integral Equations of Scattering Theory in Two Dimensions. *Journal of Computational Physics*, Vol. 86, No. 2, pp. 414-439
- Ross, R.A. (1966). Radar Cross Section of Rectangular Flat Plates as a Function of Aspect Angle. *IEEE Transactions on Antennas and Propagation*, Vol. 14, No. 8, pp. 329-335
- Rossi, J.P., & Gabillet, Y. (2002). A Mixed Launching/Tracing Method for Full 3-D UHF Propagation Modeling and Comparison with Wide-Band Measurements. *IEEE Transactions on Antennas and Propagation*, Vol. 50, No. 4, pp. 517-523
- Saeedfar, A., & Barkeshli, K. (2006). Shape Reconstruction of Three-Dimensional Conducting Curved Plates Using Physical Optics, NURBS Modeling, and Genetic Algorithm. *IEEE Transactions on Antennas and Propagation*, Vol. 54, No. 9, pp. 2497-2507
- Sáez de Adana, F., González, I., Gutiérrez, O., Lozano, P., & Cátedra, M.F. (2004) Method Based on Physical Optics for the Computation of the Radar Cross Section Including Diffraction and Double Effects of Metallic and Absorbing Bodies Modeled with Parametric Surfaces. *IEEE Transactions on Antennas and Propagation*, Vol. 52, No. 12, pp. 3295-3303
- Shreiner, D. (2004). *OpenGL Reference Manual: the Official Reference Document to OpenGL, Version 1.4*, Addison-Wesley, ISBN 978-0321173836, London, UK
- Staelin, D.H., Morgenthaler, A.W., & Kong, J.A. (1993). *Electromagnetic Waves*, Prentice Hall, ISBN 978-0132258715, USA
- Taflove, A., & Umashankar, K.R. (1987). The Finite Difference Time Domain FD-TD Method for Electromagnetic Scattering and Interaction Problems. *Journal of Electromagnetic Waves and Applications*, Vol. 1, No. 4, pp. 363-387
- Ufimtsev, P.Y. (1962). Method of Edge Waves in the Physical Theory of Diffraction, *Izd-vo Sov. Radio*, pp. 1-243 (translated by U.S. Air Force Foreign Technology Division, Wright-Patterson AFB, OH)
- Ulusik, C., Cakis, G., Cakis, M., & Sevgi, L. (2008). Radar Cross Section (RCS) Modeling and Simulation, Part 1: A Tutorial Review of Definitions, Strategies, and Canonical Examples. *IEEE Antennas and Propagation Magazine*, Vol. 50, No. 1, pp. 115-126

Van-Bladel, J. (2007). *Electromagnetic Fields* (2nd edition), IEEE Press, Wiley-Interscience, ISBN 978-0471263883, USA

IntechOpen

IntechOpen



Electromagnetic Waves Propagation in Complex Matter

Edited by Prof. Ahmed Kishk

ISBN 978-953-307-445-0

Hard cover, 292 pages

Publisher InTech

Published online 24, June, 2011

Published in print edition June, 2011

This volume is based on the contributions of several authors in electromagnetic waves propagations. Several issues are considered. The contents of most of the chapters are highlighting non classic presentation of wave propagation and interaction with matters. This volume bridges the gap between physics and engineering in these issues. Each chapter keeps the author notation that the reader should be aware of as he reads from chapter to the other.

How to reference

In order to correctly reference this scholarly work, feel free to copy and paste the following:

Javier Gutiérrez-Meana, José Á. Martínez-Lorenzo and Fernando Las-Heras (2011). High Frequency Techniques: the Physical Optics Approximation and the Modified Equivalent Current Approximation (MECA), Electromagnetic Waves Propagation in Complex Matter, Prof. Ahmed Kishk (Ed.), ISBN: 978-953-307-445-0, InTech, Available from: <http://www.intechopen.com/books/electromagnetic-waves-propagation-in-complex-matter/high-frequency-techniques-the-physical-optics-approximation-and-the-modified-equivalent-current-app>

INTECH
open science | open minds

InTech Europe

University Campus STeP Ri
Slavka Krautzeka 83/A
51000 Rijeka, Croatia
Phone: +385 (51) 770 447
Fax: +385 (51) 686 166
www.intechopen.com

InTech China

Unit 405, Office Block, Hotel Equatorial Shanghai
No.65, Yan An Road (West), Shanghai, 200040, China
中国上海市延安西路65号上海国际贵都大饭店办公楼405单元
Phone: +86-21-62489820
Fax: +86-21-62489821

© 2011 The Author(s). Licensee IntechOpen. This chapter is distributed under the terms of the [Creative Commons Attribution-NonCommercial-ShareAlike-3.0 License](#), which permits use, distribution and reproduction for non-commercial purposes, provided the original is properly cited and derivative works building on this content are distributed under the same license.

IntechOpen

IntechOpen