

# We are IntechOpen, the world's leading publisher of Open Access books Built by scientists, for scientists

**4,800**

Open access books available

**122,000**

International authors and editors

**135M**

Downloads

Our authors are among the

**154**

Countries delivered to

**TOP 1%**

most cited scientists

**12.2%**

Contributors from top 500 universities



**WEB OF SCIENCE™**

Selection of our books indexed in the Book Citation Index  
in Web of Science™ Core Collection (BKCI)

Interested in publishing with us?  
Contact [book.department@intechopen.com](mailto:book.department@intechopen.com)

Numbers displayed above are based on latest data collected.

For more information visit [www.intechopen.com](http://www.intechopen.com)



# A Fuzzy Water Quality Index for Watershed Quality Analysis and Management

André Lermontov<sup>1,2</sup>, Lidia Yokoyama<sup>1</sup>,  
Mihail Lermontov<sup>3</sup> and Maria Augusta Soares Machado<sup>4</sup>

<sup>1</sup>*Universidade Federal do Rio de Janeiro*

<sup>2</sup>*Grupo Águas do Brasil S/A*

<sup>3</sup>*Universidade Federal Fluminense*

<sup>4</sup>*IBMEC-RJ*

*Brazil*

## 1. Introduction

Climate change and hydric stress are limiting the availability of clean water. Overexploitation of natural resources has led to environmental unbalance. Present decisions relative to the management of hydric resources will deeply affect the economy and our future environment. The use of indicators is a good alternative for the evaluation of environmental behavior as well as a management instrument, as long as the conceptual and structural parameters of the indicators are respected.

The use of fuzzy logic to study the influence and the consequences of environmental problems has increased significantly in recent years. According to Silvert (1997), most activities, either natural or anthropic, have multiple effects and any environmental index should offer a consistent meaning as well as a coherent quantitative and qualitative appraisal of all these effects.

Among the several reasons for applying fuzzy logic to complex situations, the most important is probably the need to combine different indicators. Maybe the most significant advantage of the use of fuzzy logic for the development of environmental indicators is that it combines different aspects with much more flexibility than other methods, such as, for example, binary indices of the kind “acceptable vs. unacceptable.”

Methods to integrate several variables related to water quality in a specific index are increasingly needed in national and international scenarios. Several authors have integrated water quality variables into indices, technically called Water Quality Indices (WQIs) (Bolton et al., 1978; Bhargava, 1983; House, 1989; Mitchell, 1996; Pesce and Wunderlin, 1999; Cude, 2001; Liou et al., 2004; Said et al., 2004; Silva and Jardim, 2006; Nasiri et al., 2007). Most are based in a concept developed by the U. S. National Sanitation Foundation (NSF, 2007).

There is an obvious need for more advanced techniques to assess the importance of water quality variables and to integrate the distinct parameters involved. In this context, new, alternative integration methods are being developed. Artificial Intelligence has thus become a tool for modeling water quality (Chau, 2006). Traditional methodologies cannot classify and quantify environmental effects of a subjective nature or even provide formalism for

dealing with missing data. Fuzzy Logic can combine these different approaches. In this context new methodologies for the management of environmental variables are being developed (Silvert, 1997, 2000).

The main purpose of this research is to propose a new water quality index, called Fuzzy Water Quality Index (INQA - Índice Nebuloso de Qualidade da Água, originally in Portuguese), to be computed using Fuzzy Logic and Fuzzy Inference tools. A second goal is to compare statistically the INQA with other indices suggested in the literature using data from hydrographic surveys of four different watersheds, in São Paulo State, Brazil, from 2004 to 2006 (CETESB, 2004, 2005, 2006).

## 2. Background

### 2.1 Water quality indices

The purpose of an index is not to describe separately a pollutant's concentration or the changes in a certain parameter. To synthesize a complex reality in a single number is the biggest challenge in the development of a water quality index (IQA - Índice de Qualidade de Água, originally in Portuguese), since it is directly affected by a large number of environmental variables. Therefore, a clear definition of the goals to be attained by the use of such an index is needed. The formulation of a IQA may be simplified if one considers only the variables which are deemed critical for a certain water body. Among their advantages, indices facilitate communication with lay people. They are considered more trustful than isolated variables. They also integrate several variables in a single number, combining different units of measurement.

In a groundbreaking work, Horton (1965) developed general water quality indices, selecting and weighting several parameters. This methodology was then improved by the U.S. National Sanitation Foundation (NSF, 2007). The conventional way to obtain a IQA is to compute the weighted average of some predefined parameters, normalized in a scale from 0 to 100 and multiplied by their respective weights.

Conesa (1995) modified the traditional method and created another index, called Subjective Water Quality Index (IQA<sub>sub</sub>), that includes a subjective constant, *k*. This constant assumes values between 0.25 and 1.00 at intervals of 0.25, with 0.25 representing polluted water and 1.00 a not polluted one. The parameters used to calculate this index (eq. 1) must be previously normalized using curves given by Conesa (1995). The Objective Water Quality Index (IQA<sub>obj</sub>) results from the elimination of the subjective constant *k*.

$$IQA_{sub} = k \frac{\sum_i C_i \times P_i}{\sum_i P_i} \quad (1)$$

where:

*k* is the subjective constant (0,25, 0,50, 0,75 and 1,00);

*C<sub>i</sub>* the value of the *i*<sup>th</sup> normalized parameter (Conesa, 1995);

*P<sub>i</sub>* the relative weight of the *i*<sup>th</sup> parameter (Conesa, 1995).

The Brazilian IQA is an adaptation from the NSF index. Nine variables, being the most relevant for water quality evaluation, are computed as the weighted product (eq. 2) of the normalized values of these variables, *n<sub>i</sub>*: Temperature (TEMP), pH, Dissolved Oxygen (DO), Biochemical Oxygen Demand (BOD<sub>5</sub>), Thermotolerant Coliforms (TC), Dissolved Inorganic Nitrogen (DIN), Total Phosphorus (TP), Total Solids (TS) and Turbidity (T). Each parameter

is weighted by a value  $w_i$  between 0 and 1 and the sum of all weights is 1. The result is expressed by a number between 0 and 100, divided in 5 quality ranges: (100 - 79) - Excellent Quality; (79 - 51) - Good Quality; (51 - 36) - Fair Quality; (36 - 19) - Poor Quality; [19 - 0] - Bad Quality, normalization curves for each variable, as well as the respective weights, are available in the São Paulo's State Water Quality Reports (CETESB, 2004, 2005 and 2006).

$$IQA_{CETESB} = IQA = \prod_{i=1}^n q_i^{w_i} \quad (2)$$

Silva and Jardim (2006) used the concept of minimum operator to develop their index, called Water Quality Index for protection of aquatic life ( $IQA_{PAL}$ ). The  $IQA_{PAL}$  (eq. 3) is based on only two parameters, Total Ammonia (TA) and Dissolved Oxygen (DO):

$$IQA_{PAL} = \min (TA_n, DO_n) \quad (3)$$

A fourth index, called  $IQA_{min}$ , proposed by Pesce and Wunderlin (2000), is the arithmetic mean (eq. 4) of three environmental parameters, Dissolved Oxygen (DO), Turbidity (T) and Total Phosphorus (TP), normalized using Conesa's curves (Conesa, 1995).

$$IQA_{min} = \frac{DO+T+TP}{3} \quad (4)$$

Other indices are found in the literature and will not be considered in this study (Bordalo et al., 2001; SDD, 1976; Stambuk Giljanovic, 1999).

## 2.2 Fuzzy inference

One of the research fields involving Artificial Intelligence - AI is fuzzy logic, originally conceived as a way to represent intrinsically vague or linguistic knowledge. It is based on the mathematics of fuzzy sets (Zadeh, 1965). Fuzzy inference is the result of the combination of fuzzy logic with expert systems (Yager, 1994). The commonest models used to represent the process of classification of water bodies are called deterministic conceptual models. They are deterministic because they ignore the stochastic properties of the process and conceptual because they try to give a physical interpretation to the several subprocesses involved. These models often use a large number of parameters, making modeling a complex and time demanding task (Barreto, 2001).

Models based on fuzzy rules are seen as adequate tools to represent uncertainties and inaccuracies in knowledge and data. These models can represent qualitative aspects of knowledge and human inference processes without a precise quantitative analysis. They are, therefore, less accurate than conventional numerical models. However, the gains in simplicity, computational speed and flexibility that result from the use of these models may compensate an eventual loss in precision (Bárdossy, 1995).

There are at least six reasons why models based on fuzzy rules may be justified: first, they can be used to describe a large variety of nonlinear relations; second, they tend to be simple, since they are based on a set of local simple models; third, they can be interpreted verbally and this makes them analogous to AI models; fourth, they use information that other methods cannot include, such as individual knowledge and experience; fifth, the fuzzy approach has a big advantage over other indices, once they have the ability expand and combine quantitative and qualitative data that expresses the ecological status of a river,

allowing to avoid artificial precision and producing results that are more similar to the ecological complexity and real world problems in a more realistic panorama; and sixth, fuzzy logic can deal with and process missing data without compromising the final result.

The way systems based on fuzzy rules have been successfully used to model dynamic systems in other fields of science and engineering suggests that this approach may become an effective and efficient way to build a meaningful IQA.

Fuzzy inference is the process that maps an input set into an output set using fuzzy logic. This mapping may be used for decision making or for pattern recognition. The fuzzy inference process involves four main steps: 1) fuzzy sets and membership functions; 2) fuzzy set operations; 3) fuzzy logic; and 4) inference rules. These concepts are discussed in depth in Bárdossy (1995), Yen e Langari (1999), Ross (2004), Cruz (2004) and Caldeira et al. (2007).

The concept of fuzzy sets for modeling water quality was considered by Dahiya (2007), Nasiri et al. (2007) Chau (2006), Ocampo-Duque et al. (2006), Icaga (2007), and Chang et al. (2001), Lermontov et al. (2009), Ramesh et al. (2010), Taner et al. (2011).

### 2.3 Development of the fuzzy water quality index (INQA)

The fuzzy sets were defined in terms of a membership function that maps a domain of interest to the interval [0,1]. Curves are used to map the membership function of each set. They show to which degree a specific value belongs to the corresponding set (eq. 5):

$$\mu_A : X \rightarrow [0,1] \quad (5)$$

Trapezoidal and triangular membership functions (Figure 1) are used in this study, for the same nine parameters used by CETESB to calculate its IQA, so that this methodology can be statistically compared and validated. The data shown in Tables 1 and 2 are used according to Figure 1 to create the fuzzy sets:

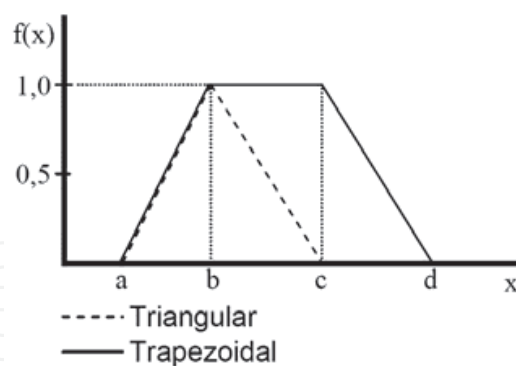


Fig. 1. Trapezoidal and triangular membership function.

In a rule based fuzzy system, a linguistic description is attributed to each set. The sets are then named according to a perceived degree of quality, that ranges from very excellent to very bad (Tables 1 and 2). For the parameters temperature and pH, two sets for each linguistic variable are used. Temperature and pH sets have the same linguistic terms above and under the Very Excellent point while distancing from it. The sets under are marked with a (▼) symbol. The trapezoidal function is only used for the Very Excellent linguistic variable and the triangular for all others. This study uses the linguistic model of fuzzy inference, where the input data set, the water quality variables, called antecedents, are processed using linguistic if/then rules to yield an output data set, the so-called consequents.

Parameter	Gr01								Gr02								Gr03			
	Temperature				pH				Disolved Oxygen DO				Biochemical Oxygen Demand BOD				Thermotolerant Coliforms Coli			
	Temp °C				pH				mg/l				mg/l				Colonies/100ml			
	Interval				1 - 14				0 - 9				0 - 30				0 - 18000			
Linguistic Variable	a	b	c	d	a	b	c	d	a	b	c	d	a	b	c	d	a	b	c	d
Very Excellent - VE	15	16	21	22	6.80	6.90	7.10	7.75	7.0	7.5	9.0	9.0	0	0	0.5	2	0	0	1	1
Excellent - E	14	15	16		7.10	7.75	8.25		6.5	7	7.5		0.5	2	3		1	2	3	
Excellent - E▼	21	22	24		6.60	6.80	6.90													
Very Good - VG	13	14	15		7.75	8.25	8.50		6	6.5	7		2	3	4		2	3	8	
Very Good - VG▼	22	24	26		6.30	6.60	6.80													
Good - G	10	13	14		8.25	8.50	8.75		5	6	6.5		3	4	5		3	8	16	
Good - G▼	24	26	28		6.10	6.30	6.60													
Fair/Good - FG	5	10	13		8.50	8.75	9.00		4	5	6		4	5	6		8	16	40	
Fair/Good - FG▼	26	28	30		5.85	6.10	6.30													
Fair - F	0	5	10		8.75	9.00	9.20		3.5	4	5		5	6	8		16	40	100	
Fair - F▼	28	30	32		5.60	5.85	6.10													
Fair/Bad - FB	-2	0	5		9.00	9.20	9.60		3	3.5	4		6	8	12		40	100	300	
Fair/Bad - FB▼	30	32	36		5.20	5.60	5.85													
Bad - B	-4	-2	0		9.20	9.60	10.00		2	3	3.5		8	12	15		100	300	1000	
Bad - B▼	32	36	40		4.75	5.20	5.60													
Very Bad - VB	-6	-4	-2		9.60	10.00	10.50		1	2	3		12	15	22		300	1000	6000	
Very Bad - VB▼	36	40	45		4.00	4.75	5.20													
Poor - P	-6	-6	-4		10.00	10.50	12.00		0	1	2		15	22	30		1000	6000	18000	
Poor - P▼	40	45	45		2.00	4.00	4.75													
Very Poor - P	-6	-6	-6		10.50	14.00	14.00		0	0	1		22	30	30		6000	18000	18000	
Very Poor - P▼	45	45	45		1.00	1.00	4.00													

Table 1. Fuzzy sets and linguistic terms for input parameters of Group 01, 02 and 03

Parameter	Gr04								Gr05								Group Output			
	Dissolved Inorg. Nitrogen DIN				Total Phosphorus TP				Total Solids TS				Turbidity Turb				Output			
	mg/l				mg/l				mg/l				mg/l							
	Interval				0 - 10				0 - 750				0 - 150				0 - 100			
Linguistic Variable	a	b	c	d	a	b	c	d	a	b	c	d	a	b	c	d	a	b	c	d
Very Excellent - VE	0	0	0.5	2	0	0	0.1	0.2	0	0	5	50	0	0	0.5	2.5	0	0	1	10
Excellent - E	0	2	4		0.1	0.2	0.3		0	50	150		0.5	2.5	7.5		0	10	20	
Very Good - VG	2	4	6		0.2	0.3	0.4		50	150	250		2.5	7.5	12.5		10	20	30	
Good - G	4	6	8		0.3	0.4	0.6		150	250	320		7.5	12.5	22.5		20	30	40	
Fair/Good - FG	6	8	10		0.4	0.6	0.8		250	320	400		12.5	22.5	35		30	40	50	
Fair - F	8	10	15		0.6	0.8	1		320	400	450		22.5	35	50		40	50	60	
Fair/Bad - FB	10	15	25		0.8	1	1.5		400	450	550		35	50	70		50	60	70	
Bad - B	15	25	35		1	1.5	3		450	550	600		50	70	95		60	70	80	
Very Bad - VB	25	35	50		1.5	3	6		550	600	650		70	95	120		70	80	90	
Poor - P	35	50	100		3	6	10		600	650	750		95	120	150		80	90	100	
Very Poor - P	50	100	100		6	10	10		650	750	750		120	150	150		90	100	100	

Table 2. Fuzzy sets and linguistic terms for input parameters of Group 04 and 05 and output parameters of all groups



Figure 2 shows the flow graph of the process, where the individual quality variables are processed by inference systems, yielding several groups normalized between 0 and 100. The groups are then processed for a second time, using a new inference, and the end result is the Fuzzy Water Quality Index - INQA/FWQI.

In the traditional methods used to obtain a IQA, parameters are normalized with the help of tables or curves and weight factors (Conesa, 1995; Mitchel, 1996; Pesce and Wunderlin, 1999; CETESB, 2004, 2005 and 2006; NSF, 2007) and then calculated by conventional mathematical methods, while in this work, parameters are normalized and grouped through a fuzzy inference system.

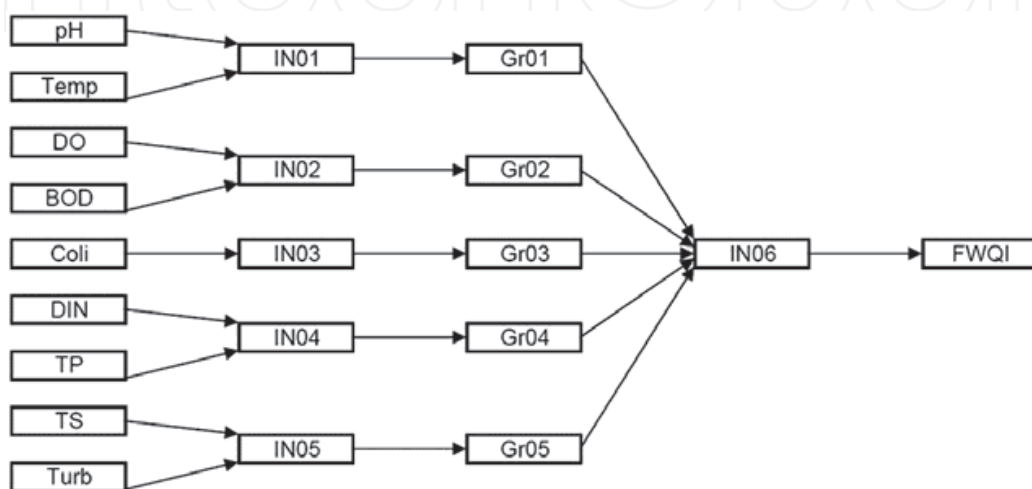


Fig. 2. Flow Graph

The NFS formulated the IQA as being a quantitative aggregation of various chosen and weighted water quality parameters to represent the best professional judgment of 142 expert respondents into one index (Mitchell, 1996). Working quantitatively with a mathematical equation, one uses a weight factor to differentiate the importance (weight - inferred and defined by experts) of each parameter for the outcoming result.

NFS, Brazilian CETESB, Ocampo-Duque et al. (2006), Conessa (1997) and other authors who proposed IQA's, used different weighting factors depending on the methodology and presence or absence of a specific monitoring parameter. Silva and Jardim (2006) and Pesce and Wunderlin (2000) did even not use weighting factors while developing respectively their  $IQA_{PAL}$  and  $IQA_{min}$ .

In a fuzzy inference system a quantitative numerical value is fuzzyfied into a qualitative state and processed by an inference engine, through rules, sets and operators in a qualitative sphere, allowing the use of information that other methods cannot include, such as individual knowledge and experience (Balas et al., 2004), permitting qualitative environmental parameters and factors to be integrated and processed (Silvert, 2000) producing similar to the real world results.

A rule in the inference system is a mathematical formalism that translates expert judgment expressed in linguistic terms (as in NFS's IQA formulation) and therefore is a subjective and qualitative weight factor in the inference engine. I.e.: Rule 1: *if Thermotolerant Coliform is very high and pH is lower than average than index is very poor*; Rule 2: *if Thermotolerant Coliform is very high and pH is excellent than index is poor*. One can notice that these rules have been designed as an expert system and a subjective and qualitative weight factor based on an

expert judgment has been introduced in the process scope. In spite of the strong pH variation, the final score is not strongly affected.

The physical parameters pH and Temp are normalized and aggregated into the first group (Gr01). DO and BOD comprise Gr02. Thermotolerant coliforms (Coli) were independently normalized as Gr03. The nutrients DIN and TP make up Gr04; TS and Turb are grouped in Gr05. The water analyses results used in this research were taken from the CETESB reports for the years of 2004, 2005 and 2006 (CETESB, 2004, 2005 and 2006). Curves to help in the creation and normalization of the fuzzy sets were taken these reports for the parameters pH, BOD, Coli, DIN, TP, TS and Turb and from Conesa (1995) for Temp and DO.

The rules for normalization and aggregation followed the logic described below and the consequent always obeyed the prescription of the minimum operator:

*If FP is VE and SP is VE then GR output is VE*  
*If FP is VE and SP is E then GR output is E*  
*If FP is E and SP is VE then GR output is E*

*If FP is VE and SP is VP then GR output is VP*  
*If FP is VP and SP is VE then GR output is VP*

where: FP - First Parameter / SP - Second Parameter / GR - Group

The INQA was developed from a fuzzy inference that had Groups 01 to 05 as input sets and a series of rules. The antecedent sets (Groups) and the consequent set (INQA) were created by trapezoid (Excellent and Poor sets) and triangular pertinence (all others) functions (Table 3, Figure 3); the INQA classes were the same as for the CETESB's IQA quality standards (Table 3). For example, it was assumed that the boundary between Good and Excellent had a pertinence of 50% in the Excellent and Good fuzzy sets and so on, showing absence of a rigid boundary between classes.

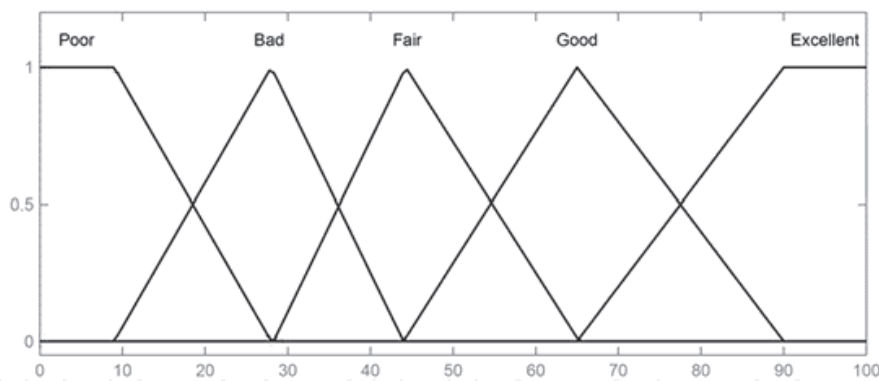


Fig. 3. Output Membership Function

Gr 01, 02, 03, 04, 05 and INQA	0 - 100				IQA CETESB Classes
	a	b	c	d	
Excellent	65	90	100	100	79 < IQA ≤ 100
Good	44	65	90		51 < IQA ≤ 79
Fair	28	44	65		36 < IQA ≤ 51
Bad	0	28	44		19 < IQA ≤ 36
Poor	0	0	9	28	0 ≤ IQA ≤ 19

Table 3. Input and output fuzzy sets for inference IN06 and IQA<sub>CETESB</sub> classes



The fuzzy inference system used to compute the INQA has 3125 rules. Being impossible to write them all in this paper, some examples are given below:

Rule 01:

*If Gr01 is Excellent and Gr02 is Excellent and Gr03 is Excellent and Gr04 is Excellent and Gr05 is Excellent then INQA is Excellent.*

Rule 830:

*If Gr01 is Excellent and Gr02 is Good and Gr03 is Bad and Gr04 is Excellent and Gr05 is Poor then INQA is Good.*

Rule 1214:

*If Gr01 is Good and Gr02 is Poor and Gr03 is Bad and Gr04 is Fair and Gr05 is Bad then INQA is Bad.*

Rule 2445:

*If Gr01 is Bad and Gr02 is Poor and Gr03 is Fair and Gr04 is Poor and Gr05 is Poor then INQA is Poor.*

All the computations were processed using the “fuzzy logic toolbox” for MATLAB® (2006).

## 2.4 Study area

### 2.4.1 Ribeira do Iguape river – environmental conservation area

The watershed of Ribeira River and the Lagoone-Estuary Complex of Iguape, Cananéia and Paranaguá, called Ribeira Valley, comprises 32 counties and covers an area of 28,306 km<sup>2</sup>, with 9 cities and 12,238 km<sup>2</sup> in Paraná State and 23 cities and 16,068 km<sup>2</sup> in São Paulo State, Brasil. The economy of Ribeira Valley is based in livestock raising (200,421 hectares), fruticulture (49,942 hectares), silviculture (46,368 hectares), temporary cultures (15,965 hectares) and horticulture (2,773 hectares). Sand and turf extraction from low-lying areas are also significant. About 1% of the state population (396,684 people) live in this river basin, 68% of them in cities. About 56% of the effluents are collected and 49% are treated. It is estimated that approximately 8.8 tons of BOD<sub>5</sub> (remaining pollutant charge) are launched in rivers for disposal within this watershed (CETESB, 2006). The sampling points are given in Table 4 and an illustrative map for this area is shown in Figure 4.

Sampling Point	CETESB Sampling Code	Latitude	Longitude	Sampling Site Description	County
		W	S		
SP 01	JAPI 02100	24 41 49	48 00 58	under a bridge on the Jacupiranga-Eldorado highway	Jacupiranga
SP 02	JUQJ 00800	23 56 29	47 05 33	under a bridge on highway BR-116	Juquitiba
SP 03	JUQJ 02900	24 19 20	47 38 17	down from the confluence with São Lourenço River	Juquia
SP 04	RIBE 02500	24 39 15	48 48 37	at the barge platform, 3 km from downtown	Itaoca
SP 05	RIIG 02500	24 29 21	47 50 05	under a bridge on the highway BR-116	Registro
SP 06	RIIG 02900	24 41 43	47 34 11	is located in Vaio Grande	Iguape

Table 4. Sampling point locations in the Ribeira do Iguape river

### 2.4.2 Paranapanema river – farming area

Paranapanema River has a total extension of 929 km, with eight dams and barrages along its length. The area under study is about 29,114 km<sup>2</sup>. Soil use is predominantly rural and thus the region is considered a farming area, occupied mainly by pastures (1,781,625 ha), followed by temporary cultures, such as sugar cane, soy and corn (764,476 ha) and silviculture (76,595 ha). Fruticulture occupies 40,917 ha and horticulture, 2,477 ha. The watershed comprises 63 counties, with a total population of 1,155,060, of which 88% is urban (CETESB, 2006). Approximately 95.5% of the effluents produced in this watershed are collected and about 79% of these are treated. It is estimated that approximately 20 tons of

BOD<sub>5</sub> are dumped in reception bodies of this watershed for disposal (CETESB, 2006). The sampling points are given in Table 5 and an illustrative map for this area is shown in Figure 5.



Fig. 4. Map showing Ribeira do Iguape River in a conservation area.



Fig. 5. Map showing Paranapanema River in a farming area.

Sampling Point	CETESB Sampling Code	Latitude W	Longitude S	Sampling Site Description	County
SP 01	PARP 02500	22 59 54	49 54 27	under a bridge on the highway BR-153, in Ourinhos county	Ourinhos
SP 02	PADO 02600	22 57 14	49 52 02	water intake dam in Ourinhos	Ourinhos
SP 03	PARP 02750	22 39 40	51 23 18	800m after the water intake dam in Capivara	Taciba
SP 04	PARP 02900	22 35 50	52 52 28	right after a dam in Usina de Rosana conty, on the SP-613 highway	Teodoro Sampaio
SP 05	PARN 02900	22 28 36	52 57 26	at the water dam in Porto Primavera county	Rosana

Table 5. Sampling point locations in Paranapanema River

### 2.4.3 Pardo river – industrializing area

Pardo River is born in a small spring in Minas Gerais state, crosses the northwest part of São Paulo state and, after running for 240 km with a watershed of 8,993 km<sup>2</sup>, empties in the estuary of Mogi-Guaçu river. The main uses of the soil in this watershed are urban-industrial and farming, with predominance of sugar cane (329,924 ha), followed by pastures (261,999 ha), fruticulture (83,611 ha) and silviculture (46,640 ha). About 3% of the state population live in this UGRHI (1,056,658 people) with 97% of the population in urban areas, scattered over 23 cities. More than 99% of the effluents are collected and 51% are treated. It is estimated that approximately 31 tons of BOD<sub>5</sub> are dumped in reception bodies of this watershed for disposal (CETESB, 2006). The sampling points are given in Table 6 and an illustrative map for this area is shown in Figure 6.

Sampling Point	CETESB Sampling Code	Latitude W	Longitude S	Sampling Site Description	County
SP 01	PARD 02010	21 34 20	46 50 09	under a bridge on the SP-350 highway, between São José and Guaxupé	São José do Rio Pardo
SP 02	PARD 02100	21 37 24	47 02 38	under a bridge on the SP-340 highway, between Casa Branca a Mococa	Mococa
SP 03	PARD 02500	21 06 00	47 45 44	left margin, at Clube Ribeirão Preto's Regatas Club	Ribeirão Preto
SP 04	PARD 02600	20 57 58	48 01 40	right margin, 50 m from bridge under highway between Pontal a Cândia	Pontal

Table 6. Sampling point locations in Pardo River

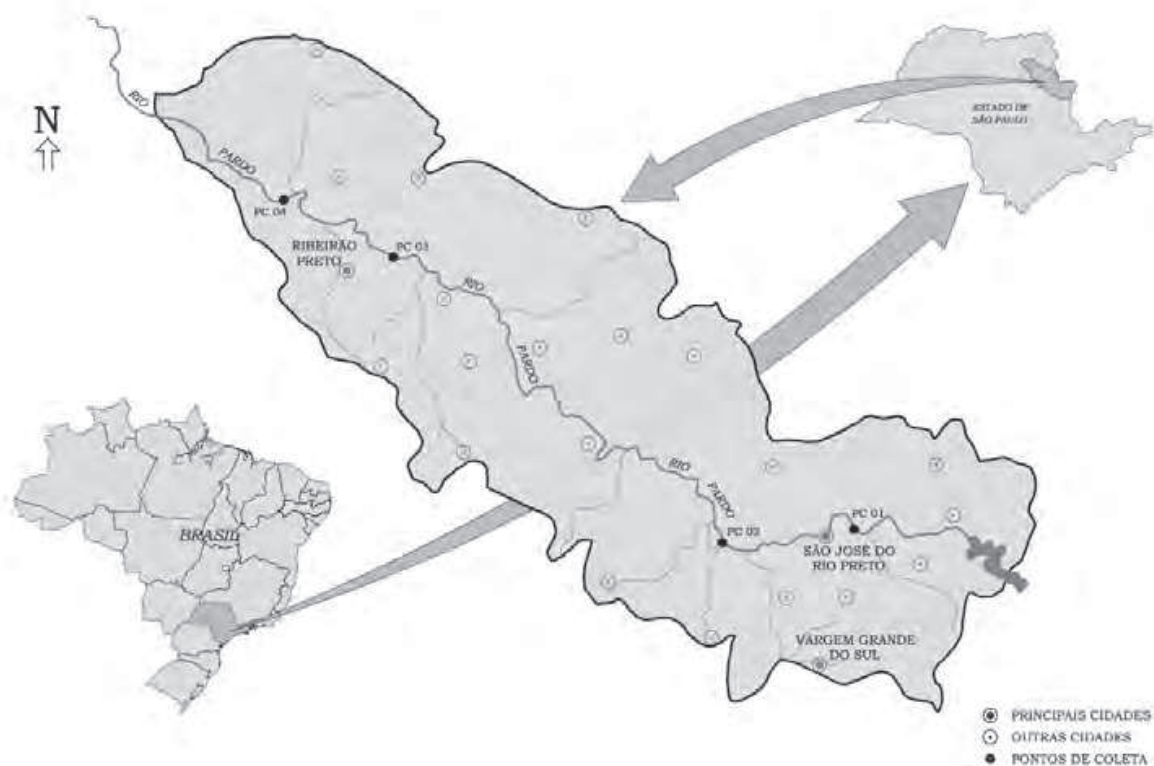


Fig. 6. Map showing Pardo River in an industrializing area.



#### 2.4.4 Paraíba do Sul river – industrial area

Paraíba do Sul River has an approximate length of 1,150 km (Jornal da ASEAC, 2001). Its watershed is located in the southwest region of Brazil and covers approximately 55,400 km<sup>2</sup>, including the states of São Paulo (13,500 km<sup>2</sup>), Rio de Janeiro (21,000 km<sup>2</sup>) and Minas Gerais (20,900 km<sup>2</sup>). The watershed comprises 180 counties, with a total population of 5,588,237, 88.8% in urban areas. The river is used predominantly for irrigation (49.73 m<sup>3</sup>/s), without taking into account the transposition of the Paraíba do Sul (160 m<sup>3</sup>/s) and Pirai (20 m<sup>3</sup>/s) rivers to the metropolitan region of Rio de Janeiro. The urban supply amounts to about 16.5 m<sup>3</sup>/s, while the industrial sector uses 13.6 m<sup>3</sup>/s, surpassing only the cattle-raising sector, with less than 4 m<sup>3</sup>/s. The main uses of the soil are urban-industrial and rural, the second with pastures (545,156 ha), temporary cultures (57,709 ha), fruticulture (2,996 ha), horticulture (438) and silviculture (83,667 ha). About 5% of the state population (1,944,638) live in this watershed, with 91% in urban areas, scattered throughout 34 counties. Of the total effluents produced in this watershed, 89% are collected and 33% of these are treated. It is estimated that about 72 tons of BOD are dumped in this river for disposal (CETESB, 2006). The sampling points are given in Table 7 and an illustrative map for this area is shown in Figure 7.

Sampling Point	CETESB Sampling Code	Latitude		Longitude		Sampling Site Description	County
		W	S	W	S		
SP 01	PARB 02050	23 22 32	45 53 12	at the water intake point in Santa Branca county, in the Angola de Cima suburb		Santa Branca	
SP 02	PARB 02100	23 22 05	45 53 59	under a bridge on the highway SP-77, between Jacareí and Santa Branca		Santa Branca	
SP 03	PARB 02200	23 18 48	45 58 20	at the Jacareí water intake point		Jacareí	
SP 04	PARB 02300	23 11 42	45 55 48	under the bridge that accesses Urbanova suburb, in São José dos Campos county		São José dos Campos	
SP 05	PARB 02310	23 11 16	45 55 04	at the São José dos Campos water intake point		São José dos Campos	
SP 06	PARB 02400	23 04 54	45 42 40	under the Porto street bridge, between Caçapava county and Menino Jesus		Caçapava	
SP 07	PARB 02490	22 57 40	45 33 10	at the SABESP water intake point for Tremembé in Taubaté county		Tremembé	
SP 08	PARB 02530	22 54 42	45 28 13	at the SABESP water intake point for Pindamonhangaba		Pindamonhangaba	
SP 09	PARB 02600	22 50 40	45 14 04	at the water intake point for Aparecida		Aparecida	
SP 10	PARB 02700	22 42 12	45 07 10	under a bridge on the highway BR-459, between Lorena and Piquete		Lorena	
SP 11	PARB 02900	22 32 32	44 46 26	under the bridge in Queluz county		Queluz	

Table 7. Sampling point locations in Paraíba do Sul River



Fig. 7. Map showing Paraíba do Sul River in an industrial area.

### 3. Index results and discussion

The  $IQA_{CETESB}$  was taken from the *Relatórios de Qualidade das Águas Interiores do Estado de São Paulo* (CETESB, 2004, 2005, 2006). The  $IQA_{sub}$  was calculated with a weight factor  $k = 0.75$  for good quality water. The  $IQA_{min}$  was calculated as described by Pesce and Wunderlin (2000) and the  $IQA_{PAL}$  according to Silva e Jardim (2006), using the recommended technologies. The INQA was computed using the method previously outlined. In this work individual results will not be presented. The results will be graphically presented in the consolidated form of weighted averages. A statistical analysis of the results will then be performed. Factors or influences that lead to an increase or decrease of individual parameters will not be discussed, since this would take us too far afield. A discussion of the subject can be found in Lermontov (2009).

#### 3.1 Ribeira do Iguape river indices – environmental conservation area

The annual averages of the indices for 2004, 2005 and 2006 are shown in Figure 8 for all sampling points. The  $IQA_{CETESB}$ ,  $IQA_{sub}$  and INQA indices are strongly correlated. In most cases, the  $IQA_{sub}$  index is the stricter and  $IQA_{min}$  is the less strict, attributing a better quality to the same water sample.



Fig. 8. Annual averages of the indices for the Ribeira do Iguape River.

#### 3.2 Paranapanema river indices – farming area

The results for the Paranapanema River are shown in Figure 9. The  $IQA_{min}$  for 2004 is less strict than the other indices, while the  $IQA_{min}$  is the stricter. The other the indices are very close for sampling points SP 03, 04 and 05, but diverge somewhat for sampling points SP 01 and 02.

In the case of 2005 data, the INQA stays close to the  $IQA_{CETESB}$  for all sampling points but the two indices are weakly correlated, specially at sampling point SP 02. The  $IQA_{sub}$  is again the stricter index and the  $IQA_{min}$  the less strict. Data for 2006 confirm that the  $IQA_{sub}$  is not the best indicator for the water quality of this river, since it diverges significantly from the other indices. The INQA is again very close to the  $IQA_{CETESB}$ , although slightly less strict.

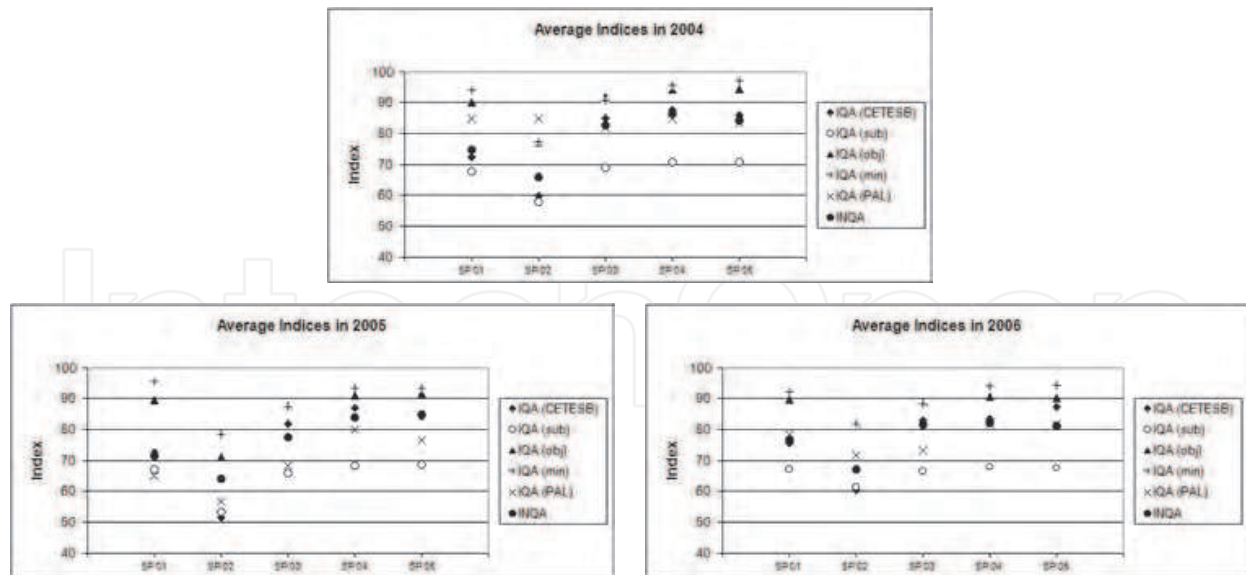


Fig. 9. Annual averages of the indices for the Paranapanema River.

### 3.3 Pardo river indices – industrializing area

The results for the Pardo River are shown in Figure 10. For 2004, the  $IQA_{CETESB}$ ,  $IQA_{sub}$  e  $INQA$  indices are very close. A  $k = 0.75$  value for the  $IQA_{sub}$  index shows a less strict evaluation, while a  $k = 1.00$  for the  $IQA_{obj}$  shows a stricter evaluation. The  $INQA$  is in general close to the  $IQA_{CETESB}$ , albeit somewhat less strict for SP 04. The 2005 results show the  $INQA$  close to the  $IQA_{CETESB}$  for sampling points SP 01 e SP 02 but the indices diverge for SP 03 and SP 04. The  $IQA_{sub}$  is again the stricter index. The results for 2006 are similar.

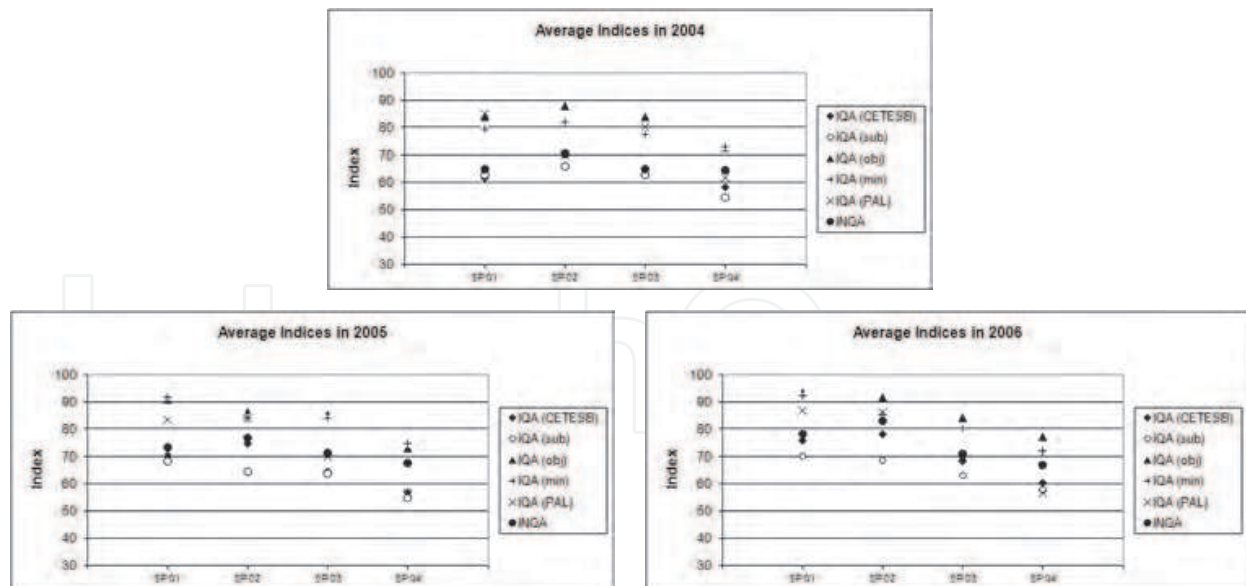


Fig. 10. Annual averages of the indices for the Pardo River.

### 3.4 Paraíba do Sul indices – industrial area

The results for the Paraíba do Sul River are shown in Figure 11. In the case, the  $IQA_{PAL}$  is the stricter index, while the  $IQA_{obj}$  and the  $IQA_{min}$  alternate as the less strict index, depending on the sampling point. The  $IQA_{CETESB}$ ,  $IQA_{sub}$  and  $INQA$  are closely related.



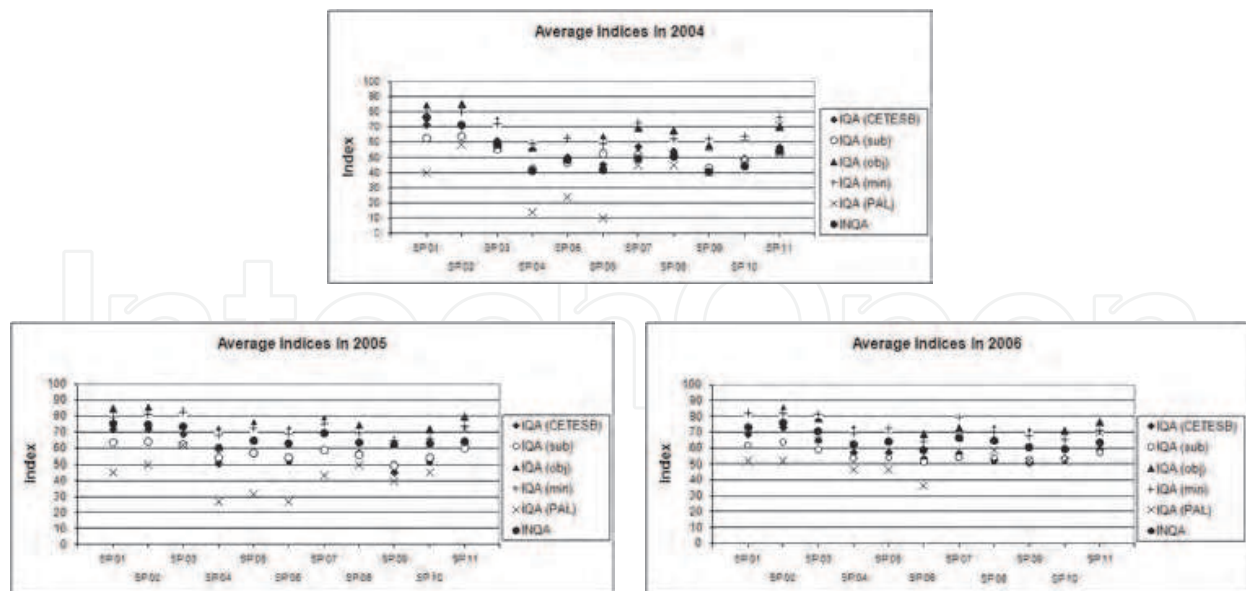


Fig. 11. Annual averages of the indices for the Paraíba do Sul River.

#### 4. Statistical results, discussion and conclusions

##### 4.1 Statistical results

The purpose of statistical analysis of the results for each watershed was to validate the use of fuzzy methodology to develop a fuzzy water quality index (INQA). In this process, the results for 2004, 2005 and 2006 were not separately studied, but were grouped in a single data set for each index. The results are shown in Table 8.

Catchment area	Indices	N	Arithmetic	Geometric	Harmonic	Median	Mode	Min	Max	Variance	Standard	Confidence	Confidence	Coefficients of variation
			mean	mean	mean				Deviation	-95%	95%			
Ribeira do Iguape river 'Conservation area'	IQA (CETESB)	108	61.1	60.3	59.5	59.5	56.0	36	83	99.2	9.959	8.7845	11.498	16.299
	IQA (sub)	108	59.5	59.2	58.9	60.2	60.4	46	74	35.9	5.995	5.2880	6.921	10.073
	IQA (obj)	108	79.3	78.9	78.5	80.2	80.5	61	98	63.9	7.993	7.0506	9.229	10.073
	IQA (min)	108	79.8	78.9	77.9	80.0	90.0	43	100	132.6	11.513	10.1559	13.293	14.431
	IQA (PAL)	108	70.3	69.0	67.6	70.0	60.0	30	90	165.3	12.859	11.3424	14.846	18.297
	INQA	108	64.7	63.8	62.8	66.0	66.0	29	85	95.1	9.754	8.6039	11.262	15.083
Parapananema river 'Farming area'	IQA (CETESB)	88	77.2	76.0	74.7	82.0	90.0	46	92	163.5	12.785	11.1351	15.014	16.558
	IQA (sub)	90	66.0	65.8	65.5	67.5	71.8	50	74	34.6	5.885	5.1331	6.897	8.911
	IQA (obj)	90	88.1	87.7	87.3	90.0	95.7	66	98	61.6	7.847	6.8441	9.197	8.911
	IQA (min)	90	90.2	89.6	89.0	93.3	96.7	60	100	89.0	9.433	8.2275	11.065	10.459
	IQA (PAL)	90	76.9	75.2	73.1	80.0	90.0	30	100	210.4	14.505	12.6527	17.002	18.867
	INQA	90	77.6	77.1	76.5	76.7	87.1	52	87	79.9	8.939	7.7963	10.475	11.516
Pardo river 'Industrializing area'	IQA (CETESB)	70	66.8	66.2	65.5	66.0	Multiple	41	87	87.2	9.341	8.0087	11.208	13.977
	IQA (sub)	72	63.1	62.7	62.3	63.8	63.2	46	74	42.6	6.529	5.6097	7.813	10.354
	IQA (obj)	72	84.1	83.6	83.1	85.0	84.3	61	98	75.8	8.706	7.4796	10.417	10.354
	IQA (min)	72	81.1	80.2	79.3	83.3	Multiple	53	100	134.9	11.615	9.9786	13.897	14.319
	IQA (PAL)	72	73.8	72.1	70.1	70.0	70.0	30	90	198.4	14.086	12.1019	16.854	19.100
	INQA	72	70.8	70.3	69.8	68.0	66.0	51	88	66.8	8.173	7.0216	9.779	11.547
Paraíba do Sul river 'Industrial Area'	IQA (CETESB)	184	57.1	55.9	54.8	56.0	54.0	35	87	138.2	11.758	10.6667	13.100	20.580
	IQA (sub)	190	54.9	54.4	53.8	55.7	Multiple	36	76	60.0	7.747	7.0386	8.615	14.105
	IQA (obj)	190	73.0	72.3	71.5	74.3	Multiple	48	93	103.8	10.188	9.2561	11.330	13.955
	IQA (min)	190	71.3	70.2	69.0	73.3	76.7	40	93	145.5	12.063	10.9602	13.416	16.915
	IQA (PAL)	190	46.8	-	-	50.0	50.0	0	80	419.8	20.489	18.6152	22.785	43.790
	INQA	190	61.4	59.8	58.0	64.5	Multiple	29	87	169.4	13.016	11.8261	14.475	21.210

Table 8. Statistical Data

The statistical data were computed using the StatSoft Statistica application and will be discussed in section 4.2. Figure 12 show the coefficient of variation of the indices.

Table 9 shows the relative differences between the means of the averages indices and the official index (IQA<sub>CETESB</sub>) and the proposed new index (INQA), calculated using Equation 6:

$$\% \text{ variation} = (I1 - I2) / I1 \times 100 \tag{6}$$

Where:

I1 - First index

I2 - Second index

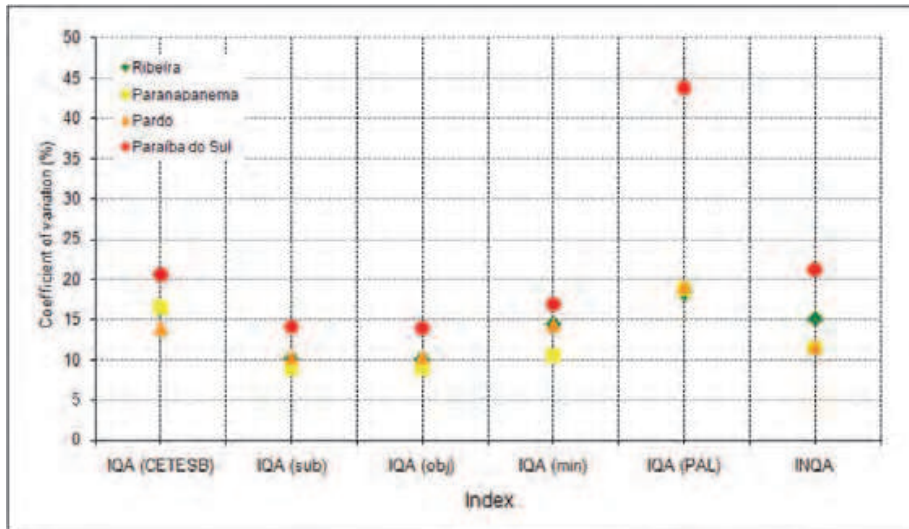


Fig. 12. Coefficients of variation of the indices.

Catchment area	Indices	AM deviation	GM deviation	HM deviation	AM deviation	GM deviation	HM deviation
		in relation to IQA (CETESB) %	in relation to IQA (CETESB) %	in relation to IQA (CETESB) %	in relation to INQA %	in relation to INQA %	in relation to INQA %
Ribeira do Iguape river 'Conservation area'	IQA (CETESB)				5,5	5,5	5,4
	IQA (sub)	2,6	1,8	0,9	8,0	7,2	6,3
	IQA (obj)	-29,9	-30,9	-32,1	-22,7	-23,7	-25,0
	IQA (min)	-30,6	-30,9	-31,1	-23,4	-23,6	-24,1
	IQA (PAL)	-15,0	-14,5	-13,8	-8,7	-8,1	-7,7
	INQA	-5,8	-5,9	-5,7			
Parapanema river 'Farming area'	IQA (CETESB)				0,5	1,3	2,3
	IQA (sub)	14,5	13,5	12,4	14,9	14,7	14,4
	IQA (obj)	-14,0	-15,3	-16,8	-13,5	-13,8	-14,1
	IQA (min)	-16,8	-17,9	-19,1	-16,2	-16,3	-16,4
	IQA (PAL)	0,4	1,1	2,2	0,9	2,4	4,4
	INQA	-0,5	-1,4	-2,3			
Pardo river 'Industrializing area'	IQA (CETESB)				5,6	5,9	6,2
	IQA (sub)	5,6	5,2	4,8	10,9	10,8	10,8
	IQA (obj)	-25,8	-26,3	-26,9	-18,8	-18,9	-19,0
	IQA (min)	-21,4	-21,3	-21,1	-14,6	-14,1	-13,6
	IQA (PAL)	-10,4	-9,0	-7,1	-4,2	-2,6	-0,4
	INQA	-5,9	-6,3	-6,6			
Paraiba do Sul river 'Industrial Area'	IQA (CETESB)				7,0	6,5	5,5
	IQA (sub)	3,8	2,8	1,8	10,5	9,1	7,2
	IQA (obj)	-27,8	-29,2	-30,6	-19,0	-20,9	-23,4
	IQA (min)	-24,9	-25,6	-26,0	-16,2	-17,4	-19,1
	IQA (PAL)	18,1			23,8		
	INQA	-7,5	-6,9	-5,8			

were:

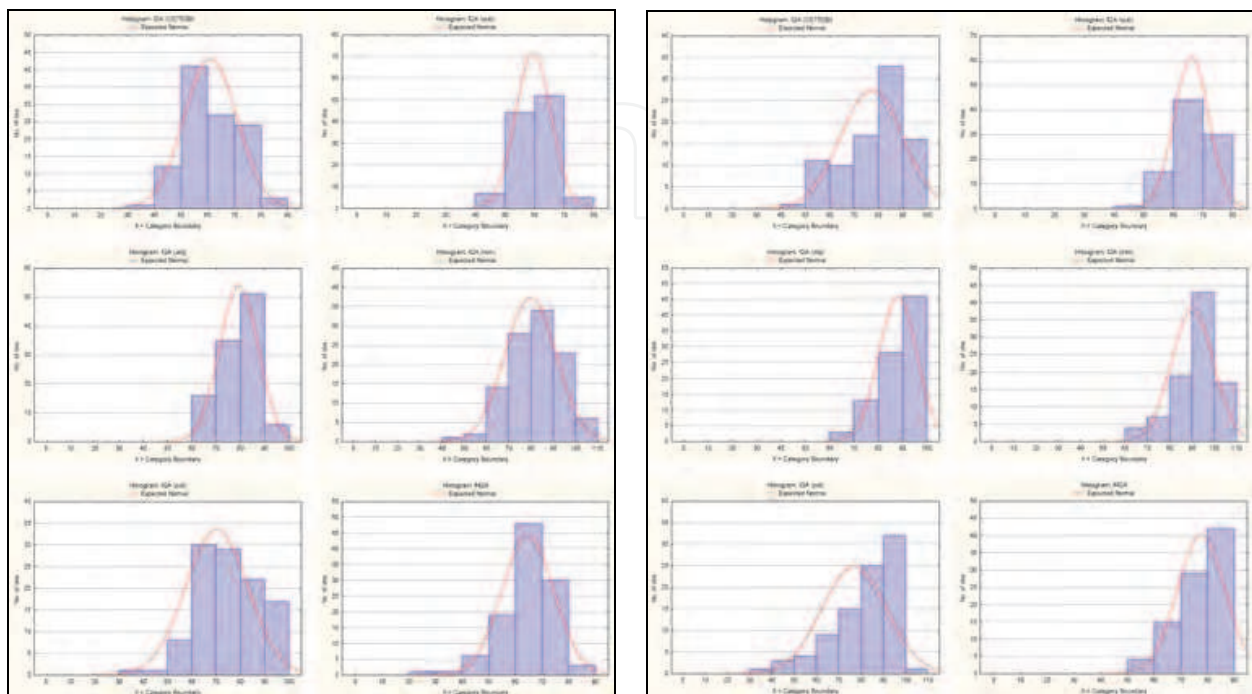
AM - Arithmetic mean

GM - Geometric mean

HM - Harmonic mean

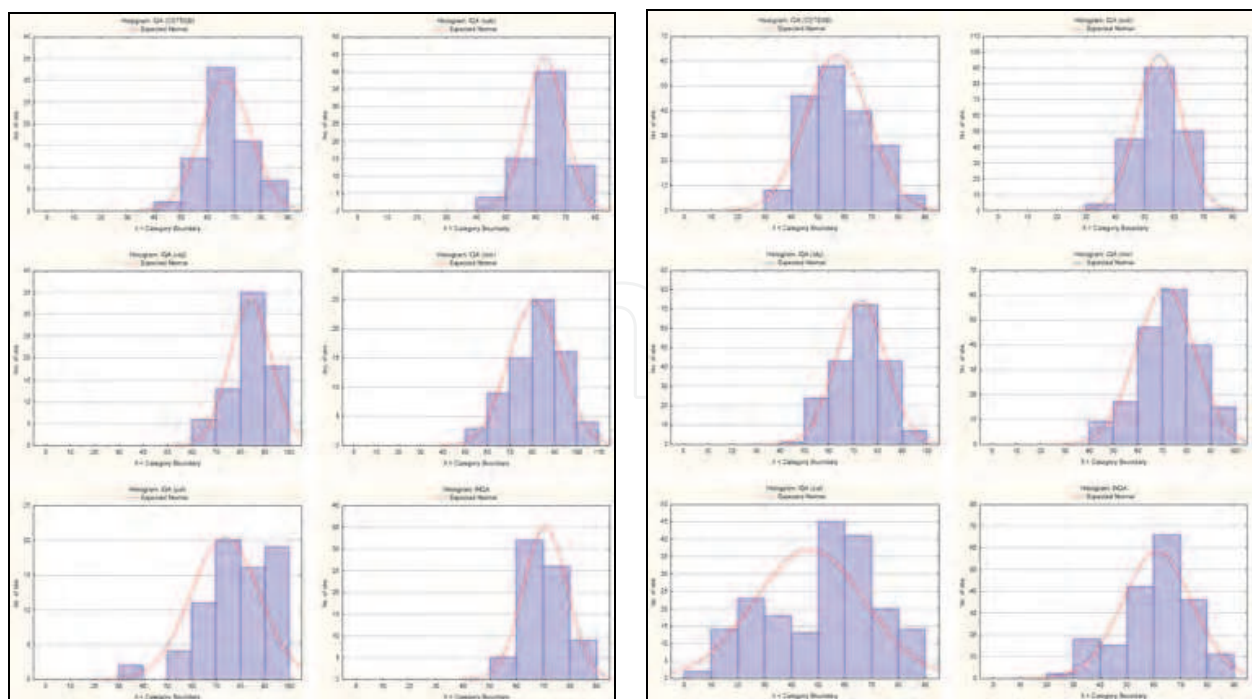
Table 9. Relative differences between the means of the indices and IQA<sub>CETESB</sub> and INQA.

The frequency histograms of the indices for the four watersheds are shown in Figure 13 and correspond to a visual representation of the frequency distribution tables. For analysis and interpretation of these graphs, see Lermontov (2009).



Ribeira do Iguape

Paranapanema



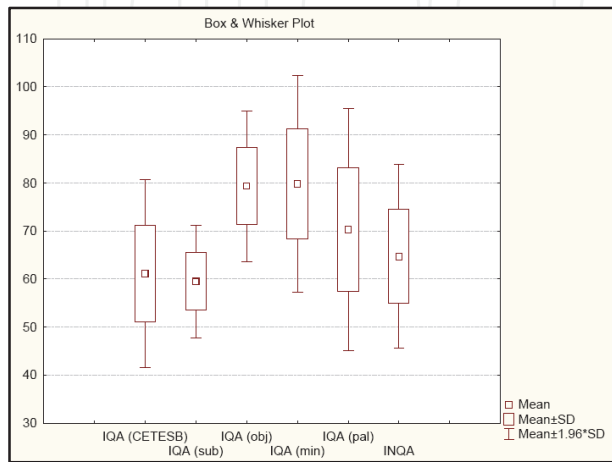
Pardo

Paraíba do Sul

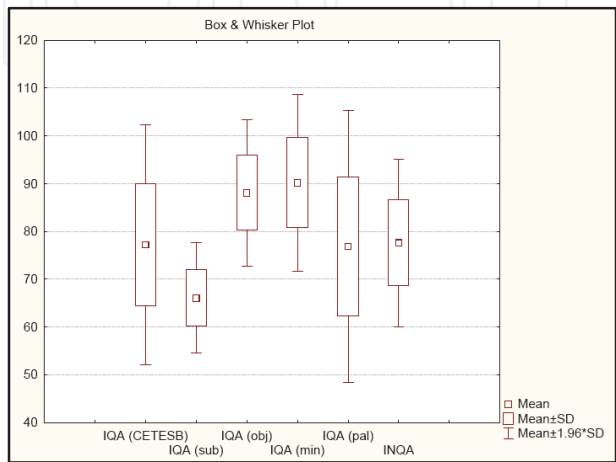
Fig. 13. Frequency histograms for the four watersheds.



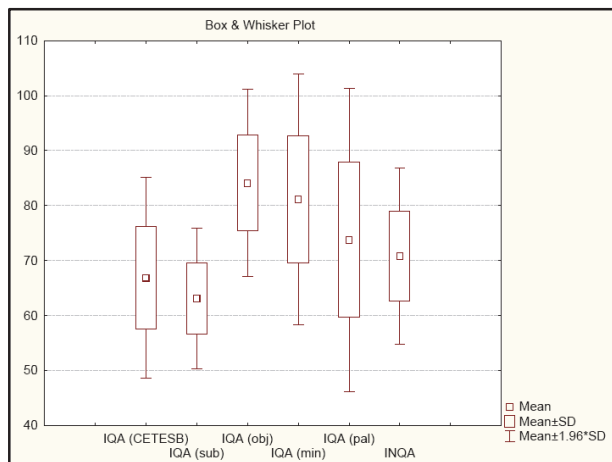
Figures 14 and 15 show box & whiskers plots for all indices and watersheds. These plots are a convenient way to visualize the main trend and the data scatter and to show, in the same graph, the main results of a sampling.



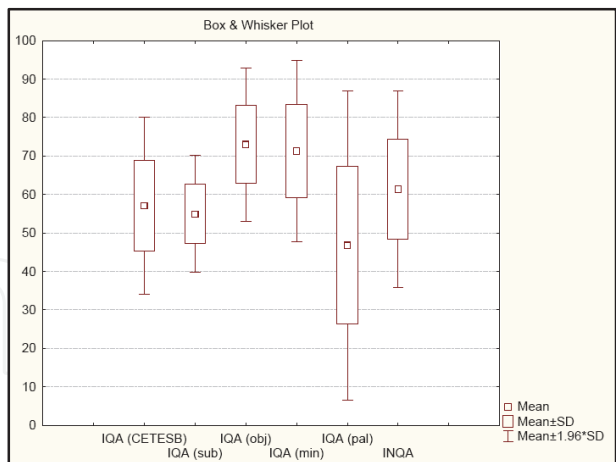
Ribeira do Iguape



Paranapanema



Pardo



Paraíba do Sul

Fig. 14. Box & Whiskers plots of the mean, mean  $\pm$  standard deviation and mean  $\pm$  1,96 times standard deviation for the four watersheds.

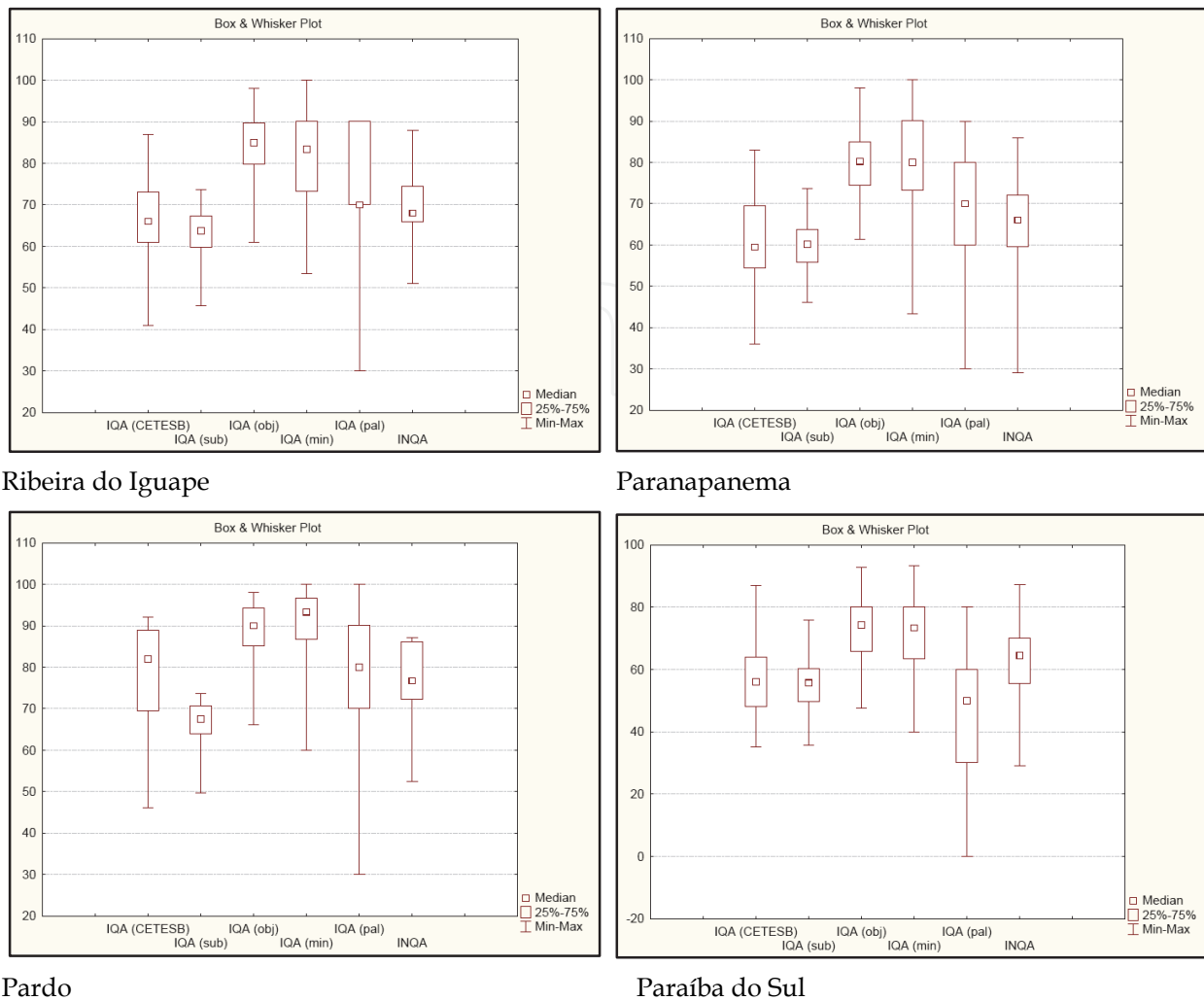


Fig. 15. Box & Whiskers plots of the median, upper and lower quartile and maximum and minimum value for the four watersheds.

Table 10 shows the correlations between the fuzzy index (INQA) and the other indices. The best correlation, 0.8527 (a strong correlation), between the INQA and the  $IQA_{CETESB}$  for the Paranapanema River, is illustrated in Figure 16. The worst correlation, 0.3740, between the INQA and the  $IQA_{PAL}$  for the Ribeira do Iguape River, is illustrated in Figure 17.

	Correlations - Pearson's r			
	Ribeira do Iguape	Paranapanema	Pardo	Paraíba do Sul
INQA x $IQA_{CETESB}$	0.79381	0.8527	0.8206	0.7943
INQA x $IQA_{sub}$	0.57937	0.7710	0.7107	0.8127
INQA x $IQA_{obj}$	0.57937	0.7710	0.7107	0.8742
INQA x $IQA_{min}$	0.59937	0.6444	0.6520	0.7483
INQA x $IQA_{PAL}$	0.37406	0.3924	0.4025	0.5191

Table 10. Correlations between the INQA and the other indices for the four watersheds.

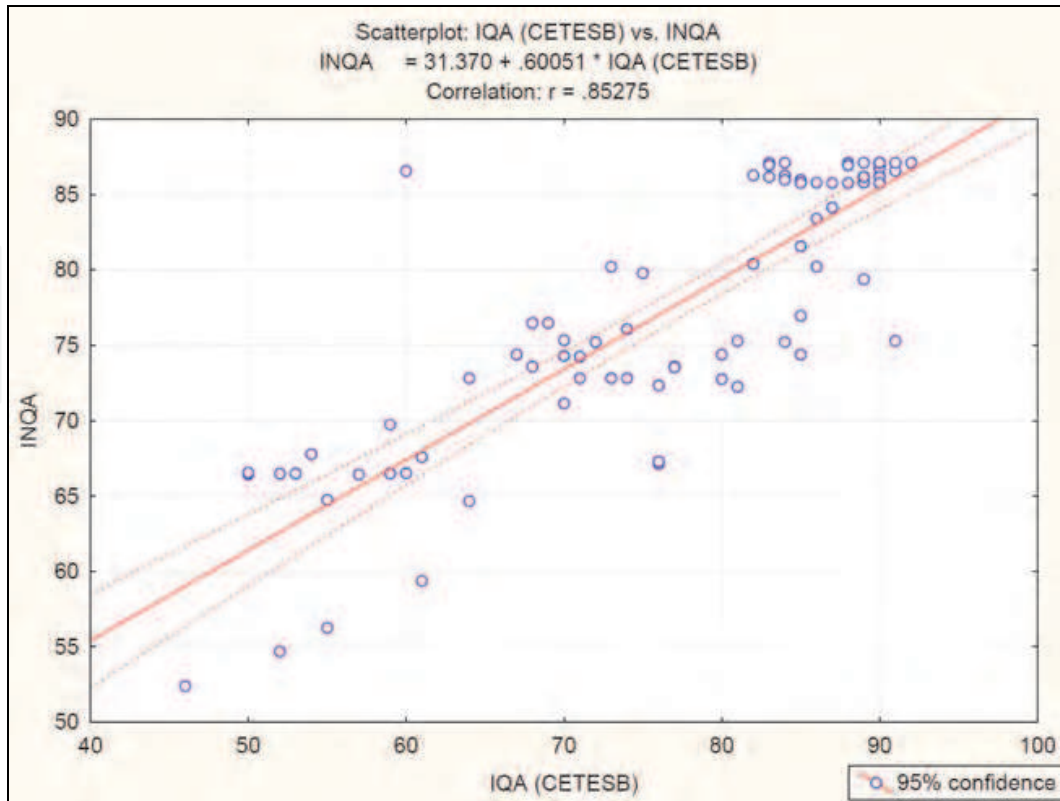


Fig. 16. Best correlation -  $INQA \times IQA_{CETESB} - r = 0.8527$  - Paranapanema River

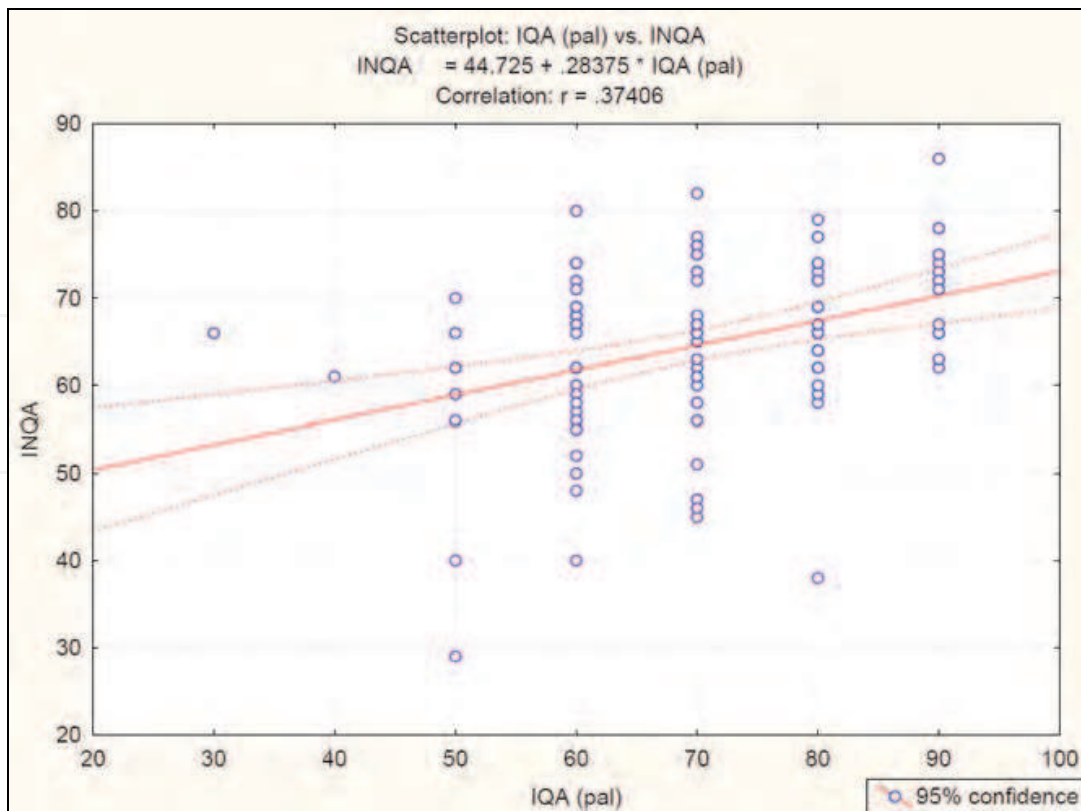


Fig. 17. Worst correlation -  $INQA \times IQA_{pal} - r = 0.3740$  - Ribeira do Iguape River



## 4.2 Statistical discussion

The statistical data that were collected and presented in this work provide a rich field for discussion and analysis. However, our purpose here was only to validate the use of the fuzzy index (INQA). A simplified statistical analysis was implemented and fulfilled its purpose.

In the case of the Ribeira do Iguape River, we could compute all indices from the available data, except the  $IQA_{CETESB}$ , that was taken directly from reports.

In the case of the Paraíba do Sul River, since there was a minimum equal to zero, the geometric and harmonic means could not be computed.

For all watersheds and all indices, the geometric mean was lower than the arithmetic mean and the harmonic mean was lower than the arithmetic mean.

The geometric mean and the harmonic mean of the  $IQA_{PAL}$  could not be computed for the Paraíba do Sul River because, in the case, the minimum value was 0.

The coefficients of variation shown in the last column of Table 8 were plotted in Figure 12. In this kind of analysis, the statistical results are presented through a parameter that reflects the scattering of the data points. The worst coefficient of variation was that of the  $IQA_{PAL}$  and the best were those of the  $IQA_{sub}$  and the  $IQA_{obj}$ . When the results for the INQA and the  $IQA_{CETESB}$  are compared, one notices that the coefficient of variation of the INQA was smaller than that of the  $IQA_{CETESB}$  in three watersheds: Ribeira do Iguape, Paranapanema and Pardo. Only in the industrial area of the Paraíba do Sul River the coefficient of variation of the  $IQA_{CETESB}$  was smaller than that of the INQA. This is probably due to the fact that the Paraíba do Sul watershed is more polluted than the others, with low quality water.

The relative differences more relevant to our study, i.e. those between means of the other indices and the  $IQA_{CETESB}$  and the INQA means, were computed using Equation 6 and the results are shown in Table 9. In the case of the difference between the  $IQA_{CETESB}$  and the INQA, the main focus of our study, all the differences were smaller than 10%. The largest difference, 7.5%, was for the Paraíba do Sul watershed, an industrial area, and the smallest, 0.5%, was for the Paranapanema watershed, a farming area.

Examining the box and whiskers plots of Figures 14 and 15 along with the data from Table 9, one can draw the following conclusions:

- $IQA_{obj}$  and  $IQA_{min}$  are the indices that diverge more sharply from the others, especially from  $IQA_{CETESB}$ , calculated using a well accepted method;
- INQA yielded satisfactory results when compared to a traditional method such as  $IQA_{CETESB}$ ;
- The results obtained using INQA and  $IQA_{CETESB}$  were closest for a farming region and were farthest for an industrial region.

The correlation data are shown in Table 10. The correlation coefficient  $r$ , or "Pearson's  $r$ ", as it is also called, is used in this study to measure the degree of correlation between INQA and the other indices for each watershed. Values between 0.7 and 1.0 (positive or negative) indicate a strong correlation between two parameters. Examining the correlation data, one can draw the following conclusions:

- The worst correlation with INQA was that of  $IQA_{PAL}$  in all four watersheds. This is probably due to the fact that this indicator is based on only two parameters;
- The best correlation with INQA was that of  $IQA_{obj}$  in the industrial region (Paraíba do Sul watershed), but the correlation of  $IQA_{obj}$  with INQA was much weaker in the other regions;

- The best global correlation with INQA was that of  $IQA_{CETESB}$ , a widely accepted index;
- The best individual correlation between INQA and  $IQA_{CETESB}$  was in the farming region (Paranapanema watershed).

#### 4.3 Statistical conclusions

The main conclusions of the statistical analysis are the following:

- There is a strong correlation between the proposed fuzzy index (INQA) and a widely accepted, traditional index ( $IQA_{CETESB}$ );
- The relative differences between the means of INQA and  $IQA_{CETESB}$  were less than 8% for all four watersheds;
- The box and whiskers plots for the two indices are reasonably similar;
- The other statistical results for the two indices also were reasonably similar;
- The coefficients of variation of the INQA were smaller than those of the  $IQA_{CETESB}$  for all four watersheds.

#### 5. General conclusions

The use of several water quality indices and the development, application and evaluation of a new indexing method to assess river water quality using fuzzy inference is discussed. A new index, called Fuzzy Water Quality Index (INQA) is developed to correct perceived deficiencies in environmental monitoring, water quality classification and management of water resources in cases where the conventional, deterministic methods can be inaccurate or conceptually limited. This methodology differs from other fuzzy water quality indexing methodologies by incorporating the weight factor in qualitative sphere throughout the rules in the inference engine. This is only possible due to a high variety of rules inserted in the inference system. The practical applications of the new index is tested in a realistic case study carried out in Ribeira do Iguape River in São Paulo State, Brazil, showing that the proposed index is reliable and consistent with the traditional qualitative methods.

Most institutional players are not familiar with fuzzy logic concepts, therefore being unaware of the potential of this technique for the transfer of expert knowledge in a qualitative sphere into a formal system of environmental assessment. We think that this approach can and should be used as an alternate tool for the analysis of river water quality and for strategic planning and decision making in the context of integrated environmental management.

For this doctoral study, the same nine parameters used by CETESB State Organ to calculate its IQA were chosen for the methodology validation by statistical comparison. The authors also worked in the development of an index with additional parameters, such as heavy metals, organoleptic metals and toxic compounds, for a more realistic evaluation of the hydric bodies (Lermontov, 2009).

#### 6. References

- Balas, C.E., Ergin, A., Williams, A.T., Koc, L. (2004). Marine litter prediction by artificial intelligence. *Mar. Poll. Bull.* 48, 449–457.

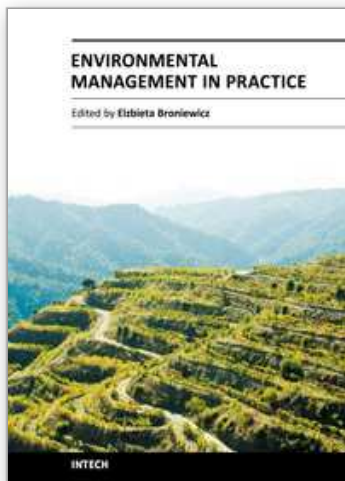
- Bárdossy, A., Duckstein, (1995). *Fuzzy rule-based modeling with applications to geophysical, biological and engineering systems*. CRC Press, Boca Raton, New York, London, Tokyo.
- Barreto, J.M (2001). *Inteligência Artificial no Limiar do Século XXI*. 3ª Edição – Florianópolis; O Autor. 379p
- Bhargava, D. S. (1983). Use of a water quality index for river classification and zoning of Ganga River, *Environmental Pollution Series B: Chemical and Physical*, 6, pp. 51-67.
- Bolton, P. W., Currie, J. C., Tervet, D. J. and Welsh, W. T. (1978). An index to improve water quality classification, *Water Pollution Control*, 77, pp. 271-284.
- Bordalo A. A., Nilsumranchit W., Chalermwat, K. (2001). Water quality and uses of the Bangpakong river. *Water Research* 35, 15, pp. 3635-3642.
- Caldeira, A. M., Machado, M. A. S., Souza, R. C., Tanscheit, R. (2007). *Inteligência Computacional aplicada a administração, economia e engenharia em Matlab*. São Paulo, Thomson Learning.
- Chang, N. B., Chen, H. W. and Ning, S. K. (2001). Identification of river water quality using the fuzzy synthetic evaluation approach, *Journal of Environmental Management*, 63, pp. 293-305.
- Chau, K. (2006). A review on integration of artificial intelligence into water quality modeling. *Marine Pollution Bulletin* 52, pp.726-733.
- Companhia de Tecnologia de Saneamento Ambiental (CETESB). (2004, 2005 and 2006) *Relatório de Qualidade das Águas Interiores do Estado de São Paulo*, São Paulo.
- Conesa Fernandes-Vitora V. (1995). In: *Methodological Guide for Environmental Impact Evaluation*, 3rd ed., p.412. Mundi-Prensa, Madrid, Spain.
- Cruz, A. J. de O. (2004). *Lógica Nebulosa. Notas de aula*, Universidade Federal do Rio de Janeiro, Rio de Janeiro.
- Cude, C.O. (2001). Water quality index: a tool for evaluating water quality management effectiveness, *J. Am. Water Resour. Assoc.* 37, pp.125-137.
- Dahiya S., Singh B., Gaur S., Garg V.K., Kushwaha H.S. (2007). Analysis of groundwater quality using fuzzy synthetic evaluation. *Journal of Hazardous Materials* 147, pp. 938-946
- Horton, R. K. (1965). An index number system for rating water quality. *Journal of Water Pollution Control Federation* 37 (3), p.300-305.
- House, M. A.; Newsome, D. H. (1989). A water quality index for river management. *Journal of the Institution of Water and Environmental Management*, 3, 1989, pp.336-344
- Icaga, Y. (2007). Fuzzy evaluation of water classification. *Ecological Indicators* 7, pp.710-718.
- Jornal da ASEAC. (2001). Paraíba do Sul: um Rio no curso da morte. *Informativo Mensal da Associação dos Empregados de Nível Universitário da CEDAE*. Edição de Maio/Junho de 2001, Accessed on 15 dez 2008, Available from: <[http://www.aseac.com.br/jorn34\\_9.htm](http://www.aseac.com.br/jorn34_9.htm)>
- Liou, S.; Lo S.; Wang, S. (2004). A generalized water quality index for Taiwan. *Environmental Monitoring Assessment* 96, pp. 35-52.

- Lermontov, A. (2009). *Novo Índice de Qualidade das Águas com uso da Lógica e Inferência Nebulosa*, Rio de Janeiro: Escola de Química/UFRJ, 2009. Doctoral Tesis.
- Lermontov, A., Yokoyama, L., Lermontov, M., Machado, M. A. S. (2009). River quality analysis using fuzzy water quality index: Ribeira do Iguape river watershed, Brazil. *Ecological Indicators*, Volume 9, p.1188-1197
- Matlab® 6.0; 2006. Packaged software for technical computing, Release 14, The Math works, Inc.
- Mitchell, M.K., Stapp, W.B. (1996). *Field Manual for Water Quality Monitoring: an Environmental Education Program for Schools*, Thomson-Shore Inc., Dexter, Michigan, pp. 277.
- Nasiri, F., Maqsood, I., Huang, G. and Fuller, N. (2007). Water quality index: A fuzzy river-pollution decision support expert system, *Journal of Water Resources Planning and Management*, 133, pp. 95-105.
- [NSF] National Sanitation Foundation International. (2007). Accessed on October of 2007, Available from: <<http://www.nsf.org>>
- Ocampo-Duque W., Ferré-Huguet N., Domingo J. L., Schuhmacher M. (2006). Assessing water quality in rivers with fuzzy inference systems: A case study. *Environment International* 32, pp. 733-742.
- Pesce, S. F., Wunderlin, D. A. (2000). Use of water quality indices to verify the impact of Córdoba city (Argentina) on Suquia river. *Water Research* 34, pp.2915-2926.
- Ramesh, S., Sukumaran, N., Murugesan, A.G., Rajan, M.P. (2010). An innovative approach of Drinking Water Quality Index – A case study from Southern Tamil Nadu, India, *Ecological Indicators* 10, p.857-868.
- Ross, T. J., (2004). *Fuzzy logic with engineering applications*. New York: John Wiley & Sons.
- Said, A, Stevens, D, Selke, G. (2004). An innovative index for evaluating water quality in streams. *Environ Manage*, 34, pp.406-14.
- SDD (1976). *Development of a Water Quality Index*. Scottish Development Department, Report ARD3, Edinburgh, p.35.
- Silva, G. S.; Jardim, W. de F. (2006). Um novo índice de qualidade de águas para proteção de vida aquática aplicado ao rio Atibaia, região de Campinas/Paulínea - SP. *Química Nova* 29, No. 4, pp. 689-694.
- Silvert, W. (1997). Ecological impact classification with fuzzy sets. *Ecological Modeling* 96, pp.1-10.
- Silvert, W. (2000). Fuzzy indices of environmental conditions. *Ecological Modeling* 130, pp.111-119.
- Stambuk-Giljanovic N. (1999). Water quality evaluation by index in Dalmatia, *Water Research* 16, pp. 3423-3440.
- Taner, M. Ü, Üstün, B. Erdinçler, A. (2011). A simple tool for the assessment of water quality in polluted lagoon systems: A case study for Küçükçekmece Lagoon, Turkey, *Ecological Indicators*, Volume 11, Issue 2, p.749-756
- Yager, R. R.; Filvel, D.P. (1994). *Essentials of Fuzzy Modeling and Control*, New York: John Wiley & Sons.

Yen, J.; Langari, R. (1999). *Fuzzy logic: intelligence, control, and information*, Prentice-Hall, Inc.  
Zadeh, L.A. (1965). Fuzzy Sets, *Information and Control* 8, pp. 338-353.

IntechOpen

IntechOpen



## **Environmental Management in Practice**

Edited by Dr. Elzbieta Broniewicz

ISBN 978-953-307-358-3

Hard cover, 448 pages

**Publisher** InTech

**Published online** 21, June, 2011

**Published in print edition** June, 2011

In recent years the topic of environmental management has become very common. In sustainable development conditions, central and local governments much more often notice the need of acting in ways that diminish negative impact on environment. Environmental management may take place on many different levels - starting from global level, e.g. climate changes, through national and regional level (environmental policy) and ending on micro level. This publication shows many examples of environmental management. The diversity of presented aspects within environmental management and approaching the subject from the perspective of various countries contributes greatly to the development of environmental management field of research.

### **How to reference**

In order to correctly reference this scholarly work, feel free to copy and paste the following:

André Lermontov, Lidia Yokoyama, Mihail Lermontov and Maria Augusta Soares Machado (2011). A Fuzzy Water Quality Index for Watershed Quality Analysis and Management, *Environmental Management in Practice*, Dr. Elzbieta Broniewicz (Ed.), ISBN: 978-953-307-358-3, InTech, Available from:  
<http://www.intechopen.com/books/environmental-management-in-practice/a-fuzzy-water-quality-index-for-watershed-quality-analysis-and-management>

**INTECH**  
open science | open minds

### **InTech Europe**

University Campus STeP Ri  
Slavka Krautzeka 83/A  
51000 Rijeka, Croatia  
Phone: +385 (51) 770 447  
Fax: +385 (51) 686 166  
[www.intechopen.com](http://www.intechopen.com)

### **InTech China**

Unit 405, Office Block, Hotel Equatorial Shanghai  
No.65, Yan An Road (West), Shanghai, 200040, China  
中国上海市延安西路65号上海国际贵都大饭店办公楼405单元  
Phone: +86-21-62489820  
Fax: +86-21-62489821



© 2011 The Author(s). Licensee IntechOpen. This chapter is distributed under the terms of the [Creative Commons Attribution-NonCommercial-ShareAlike-3.0 License](#), which permits use, distribution and reproduction for non-commercial purposes, provided the original is properly cited and derivative works building on this content are distributed under the same license.

IntechOpen

IntechOpen