

We are IntechOpen, the world's leading publisher of Open Access books Built by scientists, for scientists

4,800

Open access books available

122,000

International authors and editors

135M

Downloads

Our authors are among the

154

Countries delivered to

TOP 1%

most cited scientists

12.2%

Contributors from top 500 universities



WEB OF SCIENCE™

Selection of our books indexed in the Book Citation Index
in Web of Science™ Core Collection (BKCI)

Interested in publishing with us?
Contact book.department@intechopen.com

Numbers displayed above are based on latest data collected.

For more information visit www.intechopen.com



Applying Fuzzy Bayesian Maximum Entropy to Extrapolating Deterioration in Repairable Systems

Chi-Chang Chang

*Chung Shan Medical University
Taiwan*

Ruey-Shin Chen

*National Kinmen Institute of Technology
Taiwan*

Pei-Ran Sun

*Chung Shan Medical University Hospital
Taiwan*

1. Introduction

In general, most complex systems, which are constructed by collecting more than one part to perform either single or multiple functions, are usually repaired rather than replaced after failures, since such systems can be restored to fully implement the required functions by methods other than replacing the entire system (Ascher & Feingold, 1984). However, the successive times between failures are not necessarily identically distributed, as in renewal processes. More generally, they can become smaller (an indication of deterioration), or conversely larger and larger (an indication of reliability growth) (Barlow & Proschan, 1965). If deterioration is detected, then the decision of when to overhaul or discard the system, given the costs of repairs and failures, is of fundamental importance.

At the time of the decision, the degree of future deterioration, which is likely to be uncertain, is of primary interest for the decision maker. Decision analysis seems to be able to provide methods to deal with such uncertain situation. However, the decision structure is usually formulated in such a way as to imposingly quantify particular qualitative characteristics on human being as decision rules (Freeling, 1984). The most important of these characteristics is that of human ability to precisely specify numerical values of ends and means in a decision process. These non-fuzzy decision rules are useful; however, they are limited in their applicability to real world situations where nearly all real human decision problems are imprecise, ill-definedness and vagueness (Dompere, 1982). In such situations, decision-making depends on numerous factors which limit human ability and increase difficulties to deal with (Asai & Okuda, 1975). Therefore, the use of fuzzy method may be very helpful in solving the decision making problems of deteriorating repairable systems (Bellman & Zadeh, 1970). In section 2, describes some related researches about modeling deteriorating

issue. In addition, the nonhomogeneous Poisson process (NHPP) was introduced. In section 3, delineates the implementation procedure for fuzzy Bayesian decision process. For the sake of information value analysis, we will discuss Bayesian decision process when the collected information is assumed to be fuzzy. Section 4, we will describes some fuzzy aggregation operations researches method and process. Further, section 5 a case study to illustrate the use of the models developed in the previous sections. Finally, section 6 discusses the work items and contributions of this study.

2. Deteriorating Repairable Systems

In order to model deterioration in repairable systems, the Non-Homogeneous Poisson Process (NHPP) was introduced since it seems more plausible for systems consisting of many components (Härtler, 1989). The system failure process is time-dependent and its intensity function of the failure process is usually assumed to be of the form $\lambda(x) = \lambda_0 h(\beta; x)$, where λ_0 is the scale factor, β is the deteriorating rate, x is the elapsed time, and $h(\cdot)$ can be any function that reflects the deteriorating process. Suppose we have a system whose failure process is given by a non-homogeneous Poisson process and with a power law intensity function of the form (Ascher & Feingold, 1984):

$$\lambda(x) = \lambda_0 \beta x^{\beta-1}, \lambda_0 > 0, \beta > 0 \quad (1)$$

The likelihood function of the first $N=n$ failure times for the case of time-truncated data is given by

$$L(x_1, x_2, \dots, x_n | \lambda_0, \beta) = \lambda_0^n \beta^n \left(\prod_{i=1}^n x_i \right)^{\beta-1} \exp(-\lambda_0 x_n^\beta) \quad (2)$$

Huang and Bier (1998) proposed a natural conjugate prior distribution for the power law failure model, which is given by

$$f(\lambda_0, \beta) = K \lambda_0^{m-1} \beta^{m-1} \{ \exp(-\alpha) y_m^m \}^{\beta-1} \exp(-\lambda_0 c y_m^\beta) \quad (3)$$

Comparing with other approaches, this natural conjugate prior distribution has many desirable properties, which are summarized as follows:

- (1) The marginal distribution of β is a gamma distribution with parameters m and α , expectation $\mu_\beta = m / \alpha$, and coefficient of variation $CV_{\beta=1/\sqrt{m}}$.
- (2) The conditional distribution of λ_0 given β is a gamma distribution with parameters m and $c y_m^\beta$.
- (3) The expectation of λ_0 is given by $\mu_{\lambda_0} = \frac{c}{m} \left(\frac{\alpha}{\alpha + z_m} \right)^m$, where $z_m = \ln(y_m)$.
- (4) The coefficient of variation of λ_0 is given by $CV_{\lambda_0} = \sqrt{\frac{\eta^m (m+1)}{m} - 1}$, where

$$\eta = 1 + \frac{z_m^2}{\alpha^2 + 2\alpha z_m}, \text{ and } z_m = \ln(y_m).$$

These properties provide guidance on how to choose the parameters α , m , y_m and c to achieve joint distributions with the desired prior moments. For example, m can be chosen to give the desired value of CV_β , α can be selected to give the desired value for μ_β , y_m can be selected to give the desired value for CV_{λ_0} and c can be selected to give the desired value for μ_{λ_0} .

3. Fuzzy Bayesian Decision Process

Generally, the information is expressed by means of numerical values in a quantitative setting (Crow, 1974). However, in a qualitative setting, which is filled with vague or imprecise knowledge, the information cannot be estimated with an exact numerical value (Herrera & Herrera, 2000). In such case, a more realistic approach may be used for linguistic assessments instead of numerical values, that is, to presume that the variables involved in the problem are assessed by means of linguistic terms (Hisdal, 1984; Tong & Bonissone, 1984). This approach is appropriate since it allows a representation of information in a more realistic and adequate form when precision is not achievable.

In real Bayesian decision problems there are two different types of vagueness: states and information (Fruhworth-Schnatter, 1993). In this section we will discuss decision models for the cases in which only the states are fuzzified and both the states and additional information are fuzzified (Roubens, 1997; Stephen & Donnell, 1979). Finally, we will also present the decision flowchart and the decision analysis process.

As mentioned in the previous section, Huang and Bier (1998) developed the joint natural conjugate prior distributions for λ_0 and β . This proposed conjugate prior distribution provides guidance on how to choose the parameters α , m , y_m and c by collecting the experts' knowledge and observed data about the prior moments (i.e., μ_β , CV_β , μ_{λ_0} , CV_{λ_0}). In other words, in order to apply the joint natural conjugate prior distribution into the decision process, the experts need to specify a specific value for each of these four moments, respectively. However, this is not necessarily realistic for real world cases, since it is usually a tough task for the experts to specify a value to a prior moment with sufficient confidence. Instead, the experts often think of a prior moment as a fuzzy number, that is, a range of numbers and each number within the range has a different membership value. Furthermore, since the prior moments are not exactly provided by the experts, the parameters (i.e., α , m , c , and y_m) are therefore formed as the functions of these fuzzy numbers. From the properties of the joint natural conjugate prior in the previous section, we can have (Huang & Chang, 2004)

$$\alpha \equiv \alpha(\mu_\beta, CV_\beta) = \frac{1}{\mu_\beta CV_\beta^2} \quad (4)$$

$$m \equiv m(CV_\beta) = \frac{1}{CV_\beta^2} \quad (5)$$

$$\begin{aligned}
 y_m &\equiv y_m(\mu_\beta, CV_\beta, CV_{\lambda_0}) \\
 &= \exp\left\{\alpha\left[\varphi^{\frac{1}{m}}(CV_\beta, CV_{\lambda_0}) - 1 + \sqrt{\left[\varphi^{\frac{1}{m}}(CV_\beta, CV_{\lambda_0}) - 1\right]\varphi^{\frac{1}{m}}(CV_\beta, CV_{\lambda_0})}\right]\right\}
 \end{aligned} \tag{6}$$

and

$$c \equiv c(\mu_\beta, CV_\beta, \mu_{\lambda_0}, CV_{\lambda_0}) = \frac{m\mu_{\lambda_0}}{\left(\frac{\alpha}{\alpha + \ln(y_m)}\right)^m} \tag{7}$$

where $\varphi(CV_\beta, CV_{\lambda_0}) = \frac{CV_{\lambda_0}^2 + 1}{CV_\beta^2 + 1}$

Based on the above discussion and Equations (4) to (7), we start the discrimination problem with fuzzy states space $F=(\mu_\beta, CV_\beta, \mu_{\lambda_0}, CV_{\lambda_0})$ and exact observation space $X = \{x\}$ (Dompere, 1982). Consider a sequence of observations $x(n)=(x_1, x_2, \dots, x_n)$, therefore the fuzzy prior distribution of the fuzzy state F_j for the deteriorating repairable system is given by

$$\begin{aligned}
 f(F_j) &= K \int_{\mu_\beta} \int_{CV_\beta} \int_{\mu_{\lambda_0}} \int_{CV_{\lambda_0}} \lambda_0^{m-1} \beta^{m-1} \{ \exp(-\alpha)y_m^m \}^{\beta-1} \exp(-\lambda_0 c y_m^\beta) \\
 &\quad \chi_{F_j}(\mu_\beta) \chi_{F_j}(CV_\beta) \chi_{F_j}(\mu_{\lambda_0}) \chi_{F_j}(CV_{\lambda_0}) d\mu_\beta dCV_\beta d\mu_{\lambda_0} dCV_{\lambda_0}
 \end{aligned} \tag{8}$$

where $\chi_{F_j}(r)$ ($r = \mu_\beta, CV_\beta, \mu_{\lambda_0}$, or CV_{λ_0}) denotes the membership functions for the four fuzzy numbers, respectively, and $f(F_j)$ is the fuzzy integral over the fuzzy hyper space of four dimensions. Similar argument can be applied to the fuzzy posterior distribution derived from the fuzzy state F_j along with the additional exact data for the deteriorating repairable system, and which is given by

$$\begin{aligned}
 &f(F_j | x_1, x_2, \dots, x_n) \\
 &= K' \int_{\mu_\beta} \int_{CV_\beta} \int_{\mu_{\lambda_0}} \int_{CV_{\lambda_0}} \lambda_0^{m+n-1} \beta^{m+n-1} \{ \exp(-\alpha)y_m^m \prod_{i=1}^n x_i \}^{\beta-1} \exp[-\lambda_0 (c y_m^\beta + x_n^\beta)] \\
 &\quad \chi_{F_j}(\mu_\beta) \chi_{F_j}(CV_\beta) \chi_{F_j}(\mu_{\lambda_0}) \chi_{F_j}(CV_{\lambda_0}) d\mu_\beta dCV_\beta d\mu_{\lambda_0} dCV_{\lambda_0}
 \end{aligned} \tag{9}$$

where (x_1, x_2, \dots, x_n) means we observe the additional exact data until the nth failures.

Furthermore, in the part of observe additional fuzzy data, the fuzzy likelihood function of observing the nth failure times is given by

$$\begin{aligned}
 &Lik(x'_1, x'_2, \dots, x'_n | \lambda_0, \beta) \\
 &= \int_{x'_1} \dots \int_{x'_n} \lambda_0^n \beta^n \left(\prod_{i=1}^n x'_i \right)^{\beta-1} \exp(-\lambda_0 x'_n) \chi_1(x'_1) \dots \chi_n(x'_n) dx'_1 \dots dx'_n
 \end{aligned} \tag{10}$$

where $(x'_1, x'_2, \dots, x'_n)$ means we observe additional fuzzy data until the n th failures, and $\chi_i(x'_i)$ ($i=1, 2, \dots, n$) denotes the membership functions for the n fuzzy failure times, respectively. If we observe fuzzy state F_j and additional fuzzy data $(x'_1, x'_2, \dots, x'_n)$, then the posterior distribution will satisfy

$$\begin{aligned}
 & f(F_j | x'_1, x'_2, \dots, x'_n) \\
 &= K'' \int_{\mu_\beta} \int_{CV_\beta} \int_{\mu_{\lambda_0}} \int_{CV_{\lambda_0}} \int_{X_1} \dots \int_{X_n} \lambda_0^{m+n-1} \beta^{m+n-1} \{ \exp(-\alpha) y_m^m \prod_{i=1}^n x_i^{\beta-1} \exp[-\lambda_0 (cy_m^\beta + x_n^\beta)] \} \\
 & \quad \chi_1(x'_1) \dots \chi_n(x'_n) \chi_{F_j}(\mu_\beta) \chi_{F_j}(CV_\beta) \chi_{F_j}(\mu_{\lambda_0}) \chi_{F_j}(CV_{\lambda_0}) \\
 & \quad dx'_1 \dots dx'_n d\mu_\beta dCV_\beta d\mu_{\lambda_0} dCV_{\lambda_0}.
 \end{aligned} \tag{11}$$

Note that K , K' and K'' in Equations (8), (9) and (11) are normalizing factors. Figure 1 shows a fuzzy Bayesian analysis in deteriorating repairable systems with experts' prior knowledge. The same decision elements proposed by Huang (2001) of a Bayesian decision analysis for a deteriorating repairable system are as follows:

- (a) Parameter space $\Theta: \{(\lambda_0, \beta) | \lambda_0 > 0\}$.
- (b) Action space $A: \{a_1, a_2\}$, where a_1 is the status quo, and a_2 is the risk reduction action.
- (c) Loss function L : a real function defined on $\Theta \times A$. If we decide to keep the system operating, then the loss we face is $L(\theta, a_1)$; if we decide to take the risk reduction action, then the loss we face is $L(\theta, a_2)$.
- (d) Sample space X : The additional information available to be collected (e.g., successive failure times). The cost of collecting this additional data or information should also be reflected in the decision process.

We assume (i) that the status of system after a repair is essentially the same as it was immediately before failure occurred (as good as old); and (ii) that the repair times can be neglected. The following terminology will be used in the decision analysis process:

C_F : the cost of a failure if it occurs.

C_R : the cost of the proposed risk reduction action.

C_i : the cost of collecting additional information.

ρ : the reduction in failure rate that would result from the proposed risk reduction action ($0 < \rho < 1$).

T : the time horizon under consideration.

t : the time at which the decision is being made.

Ψ : the expected number of failures during the time period $[t, T]$ under the status quo.

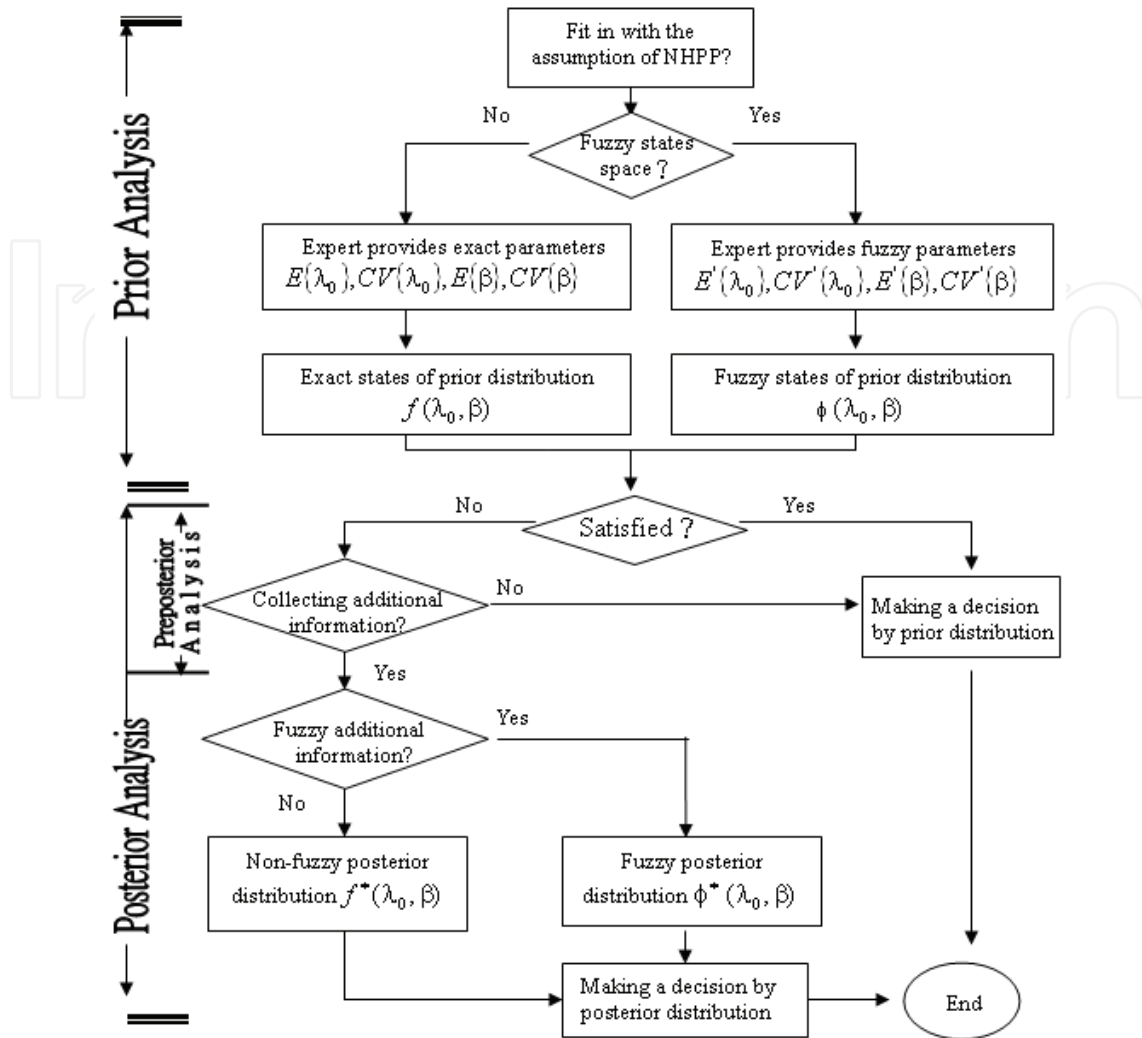


Fig. 1. Flowchart for Fuzzy Bayesian Decision Process

Suppose that the repairable system has a planned lifetime (i.e., time horizon) T , and the decision of whether to maintain the status quo or perform some risk reduction action must be made at time t . The decision variable we are dealing with is then the expected number of failures during the time period $[t, T]$. Since the system failure times are assumed to be drawn from a non-homogeneous Poisson process with power law intensity function, the expected number of failures in $[t, T]$ under the status quo is given by

$$\Psi \equiv \Psi(T, t, \lambda_0, \beta) = \int_t^T \lambda(s) ds = \int_t^T \lambda_0 / \beta s^{\beta-1} ds = \lambda_0 (T^\beta - t^\beta) \tag{12}$$

Suppose that the risk reduction action will reduce the failure intensity by a fraction ρ , where $0 < \rho < 1$. Then the expected number of failures in $[t, T]$ if the risk reduction action is performed is given by

$$\int_t^T \lambda(s)(1 - \rho) ds = (1 - \rho)\Psi \tag{13}$$

On the basis of the assumptions given above, we therefore have a two-action problem with a linear loss function, where the loss for taking action a_1 (i.e., continuing with the status quo) is $C_F\Psi$ and the loss for taking action a_2 (i.e., undertaking the risk reduction action) is $C_F(1-\rho)\Psi + C_R$. The expected loss for the status quo is simply $C_F E\{\Psi\}$, and the expected loss for the risk reduction action is $C_F(1-\rho)E\{\Psi\} + C_R$. Since the fuzzy prior and posterior density functions for Ψ are available by using defuzzified techniques and bivariate transformation for Equations (8), (9) and (11), respectively, the prior and posterior mean values of Ψ can be evaluated. Therefore, Fuzzy Bayesian decision analyses can be performed by comparing the prior and posterior mean values of Ψ with the cutoff value $\Psi_C = C_R / (C_F\rho)$. If the relevant mean is smaller than Ψ_C , then we should keep the system operating as in the status quo; if not, then we should perform the risk reduction action.

4. Fuzzy Aggregation Operation Methods

Generally, changing one's beliefs when new information becomes available is a common mode of human reasoning. It is observed in the deliberate gathering of pertinent evidence during industrial troubleshooting, or medical diagnosis and so on. In another word, if one can make independence assumptions, many of the problems disappear, and in fact, this is often the method of choice even when it is obviously incorrect. There are different methodologies for dealing with this problem, e.g., maximal entropy and Dempster-Shafer Theory (Oberkampf et al., 2004). However, it still left some the Challenge Problems to solve, these questions were (Ferson et al., 2004; Fetz & Oberguggenberger, 2004): (1) How should epistemic uncertainty about a quantity be represented? (2) How can epistemic and aleatory uncertainty about a quantity be combined and propagated in calculations? (3) How should multiple estimates of uncertain quantities be aggregated before calculation? (4) How should the technical issue of repeated uncertain parameters be handled in practical calculations? (5) How might various approaches be adapted for use in practical calculations based on sampling strategies?

This section reviews the (1) to (3) of five technical issues addressed by the Challenge Problems that are commonly involved in computational problems involving epistemic uncertainty. In a sense, this is a problem of too much information because it means the analyst must decide how to combine this information before proceeding with the analysis. In point of problem, we will examine the fuzzy entropy aggregation operators in two ways: through the fuzziness of the prior moments $\mu_\beta, CV_\beta, \mu_{\lambda_0}, CV_{\lambda_0}$ and through the fuzziness of failure data set. A fuzzy number is not a measurement. In other word, a fuzzy number is a subjective valuation assigned by one or more human operators. In addition, defuzzification methods have been widely studied for several years and were applied to fuzzy arithmetic (Kandel, 1986; Kim et al., 1998; Ma et al., 2002). The major idea behind these methods was to obtain a typical value from a given fuzzy set according to some specified characters, such as central gravity, median, etc. In other words, each defuzzification method provides a correspondence from the set of all fuzzy sets into the set of real numbers (Roychowdhury & Pedrycz, 2001). Therefore, in order to transfer the subjective valuation into real valuation, we have to use the fuzzy concept of entropy measure method (Chang, 2008). It should lend itself to probabilistic updating formulas by allowing heuristic estimation of the degree of

independence. After describing these formulae, one example illustrates how fuzzy entropy might be applied.

4.1 Uncertainty measure of Entropy

Entropy is a measure of the amount of uncertainty in the outcome of a random experiment, or equivalently, a measure of the information obtained when the outcome is observed. This concept has been defined in various ways (Shannon, 1948; Renyi, 1961; Kosko, 1986; Pal & Chakraborty, 1986) and generalized in different applied fields, such as communication theory, mathematics, statistical thermodynamics, and economics (Belahut, 1987; Cover & Thomas, 1992; Ching et al., 1995). Of these various definitions, Shannon contributed the broadest and the most fundamental definition of the entropy measure in information theory. In Shannon's entropy, entropy can be considered as a measure of the uncertainty of a random variable X . Let x be a discrete random variable with a finite alphabet set containing N symbols given by $\{x_0, x_1, \dots, x_{N-1}\}$. If an output x_j occurs with probability $p(x_j)$, then the amount of information associated with the known occurrence of output x_j is defined as

$$I(x_j) = -\log_2 p(x_j) \quad (14)$$

That is, for a discrete source, the information generated in selecting symbol x_j is $-\log_2 p(x_j)$ bits. On average, the symbol x_j will be selected $n \cdot p(x_j)$ times in a total of N selections, so the average amount of information obtained from n source outputs is

$$-n \cdot p(x_0) \log_2 p(x_0) - n \cdot p(x_1) \log_2 p(x_1) \cdots - n \cdot p(x_{N-1}) \log_2 p(x_{N-1}) \quad (15)$$

Dividing (15) by n , we obtain the average amount of information per source output symbol. This is known as the average information, the uncertainty, or the entropy, and is defined: The entropy $H(X)$ of a discrete random variable x is defined as (Shannon, 1948)

$$H(X) = -\sum_{j=0}^{N-1} p(x_j) \log_2 p(x_j) \quad (16)$$

$$\text{or } H(X) = -\sum_{j=0}^{N-1} p_j \log_2 p_j \quad (17)$$

where p_j denotes $p(x_j)$.

Hence, entropy is a function of the distribution of X . Further, this amount of information is estimated by the average weighted information provided by the expected probabilities of occurrence of the events as follows (Kosko, 1986):

$$-\sum_{i=1}^n p_i \cdot \ln p_i \quad (18)$$

where p_i is the probability of occurrence of event i and n is the number of events.

Equation (18) is also called Entropy as its form suggests, one can realize that when maximizing entropy, not only the probabilities of the events will affect the quantity of information, but also the number of events will cause certain impacts. Since these events will provide information, they are the factors concerning the information of the system and thus, their probabilities of occurrence are the weights of importance of these factors.

Several important properties regarding this Entropy model (Kosko, 1990; Kosko, 1997) which will be quoted by as below:

- (1) The objective function is a continuous function of p_1, p_2, \dots, p_n . Therefore, small changes in p_1, p_2, \dots, p_n will causes small changes in H_n . This means that information provided by factor i will be changed when the probability of occurrence of factor i changes.
- (2) H_n is a symmetric function of its arguments. Therefore, the amounts of information will not be changed by the different orders of factors.
- (3) $H_{n+1}(p_1, p_2, \dots, p_n, 0) = H_n(p_1, p_2, \dots, p_n)$. Thus, the amount of information is not changed if an impossible outcome is added to the probability scheme. That is, if a factor i with probability of occurrence equal 0, it will not give any contribution to the expected information and thus it can be deleted.
- (4) H_n will be reach the maximum when $p_1 = p_2 = \dots = p_n = 1/n$, and the maximum information by giving the outcomes equal probabilities of occurrence when the maximum uncertainty is faced.
- (5) The maximum value of H_n equals $\ln(n)$. The maximum value of H_n increase as n increased. So, when we investigate more factors of a system, the expected information about the system will increase.

In what follows, we will propose the fuzzy entropy measure which is an extension of Shannon's definition.

4.2 Fuzzy Entropy

In general, the membership function of a fuzzy set is determined by the users subjectively, which means that the membership function specified for the same concept by different persons may vary considerably. The shapes of the membership functions always present the knowledge grade of the elements in the fuzzy sets for the users (Zadeh, 1983). In other words, every membership function also presents the fuzziness of the corresponding fuzzy set in the idea of users. Therefore, it is necessary for us to have some measurements to measure the fuzziness of fuzzy sets. According to Szmidski and Kacprzyk (2000), fuzziness, a feature of imperfect information, results from the lack of crisp distinction between the elements belonging and not belonging to a set (i.e. the boundaries of the set under consideration are not sharply defined). A measure of fuzziness often used and cited in the literature is entropy first mentioned in 1965 by Zadeh (1965). The name entropy was chosen due to an intrinsic similarity of equations to the ones in the Shannon entropy. However, the two functions measure fundamentally different types of uncertainty. Basically, the Shannon entropy measures the average uncertainty in bits associated with the prediction of outcomes in a random experiment. Until now, there are several typical methods to be used to measure the fuzziness of fuzzy sets. In 1972, De Luca and Termini (1972) introduced some requirements which capture human intuitive comprehension of the degree of fuzziness. Kaufmann (1975) proposed that the fuzziness of a fuzzy set can be measured through the

distance between the fuzzy set and its nearest non-fuzzy set. Another way given by Yager (1979) suggested the measure of fuzziness can be expressed by the distances between the fuzzy set and its complement. De Luca and Termini (1972) utilized the conception of the entropy to indicate the fuzziness of a fuzzy set. Kosko (1997) investigated the fuzzy entropy in relation to a measure of subethood.

In order to elicit expert's knowledge, and advances in numerical methods and computation have made it possible to implement fuzzy Bayesian analysis in ways previously research (Chang & Cheng, 2007). The fuzzy mutual entropy and explores the information theoretic structure of fuzzy cubes was be applied (we will explore it more in detail at following context). The fuzzy mutual entropy of a fuzzy set F acts as a type of distance measure between F and its set complement F^c . The logistic map equates the sum of a real vector's n components with the mutual entropy of some fuzzy set F and its complement F^c . This cube geometry motivates the ratio measure of fuzziness $E(F) = a/b$ (Kosko, 1986), where a is the distance $\ell^1(F, F_{near})$ from F to the nearest vertex F_{near} and b is the distance $\ell^1(F, F_{far})$ from F to the farthest vertex F_{far} . The fuzzy entropy theorem reduces this ratio of distances to a ratio of counts in Equation (19) and Figure 2 shows the fuzzy entropy theorem in the unit square.

$$E(F) = \frac{c(F \cap F^c)}{c(F \cup F^c)} \quad (19)$$

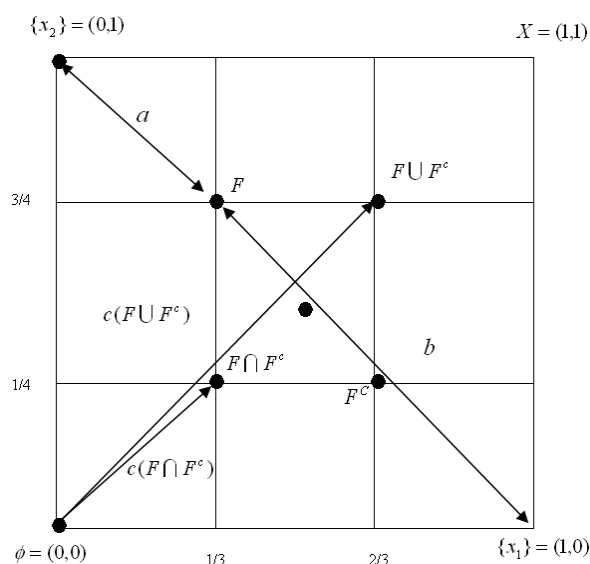


Fig. 2. Geometry of fuzzy entropy theorem (Data Source: Kosko, 1986)

Fuzzy cubes map smooth onto extended real spaces of the same dimension and vice versa. The 2^n infinite limits of extended real space $[-\infty, \infty]^n$ map to the 2^n binary corners of the fuzzy cube I^n . The real origin 0 maps to the cube midpoint. Each real point X will mapping to a unique fuzzy set F as Figure 3 shows.

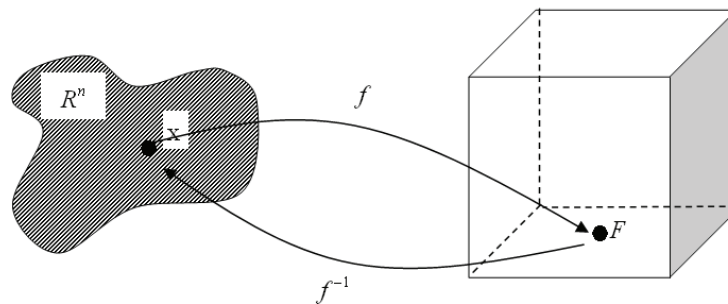


Fig. 3. Diffeomorphism from extended real space to fuzzy space (Data Source: Kosko, 1986)

Fuzzy mutual entropy equals the negative of the divergence of Shannon entropy. Uncertainty descriptions define points in the fuzzy cube parameter space. Versions of both extended Shannon entropy and fuzzy mutual entropy define vector fields on the fuzzy cube. As to the methods of defuzzification, there have been widely studied for decades and effectively utilized to the applications of fuzzy arithmetic (Kandel, 1986; Kim et al., 1998; Ma et al., 2002). The foremost idea behind these methods was to obtain a typical value from a given fuzzy set according to some specified characters, such as central gravity, mean, or median, etc. In other words, each defuzzification method provides a correspondence from the set of all fuzzy sets into the set of real numbers (Roychowdhury & Pedrycz, 2001). Therefore, in order to transfer the subjective valuation into real valuation, we have planning to apply the intuitionistic fuzzy sets and discuss the extension of Luca-Termini Axioms for the measurement of entropy-based defuzzification method. The following will be explored both contents more in detail:

First, a geometric interpretation of intuitionistic fuzzy sets and fuzzy sets is presented in Figure 4 which summarizes considerations presented in (Szmidi & Kacprzyk, 2000). Basically, an intuitionistic fuzzy set X is mapped into the triangle ABD in that each element of X corresponds to an element of ABD , as an example, a point $x' \in ABD$ corresponding to $x' \in X$ is marked. In Figure 4, this condition is fulfilled only on the segment AB . Segment AB may be therefore viewed to represent a fuzzy set. The orthogonal projection of the triangle ABD gives the representation of an intuitionistic fuzzy set on the plane. (The orthogonal projection transfers $x' \in ABD$ into $x'' \in ABC$.) The interior of the triangle $ABC = ABD'$ is the area where $\pi > 0$. Segment AB represents a fuzzy set described by two parameters: μ and ν . The orthogonal projection of the segment AB on the axis μ (the segment $[0; 1]$ is only considered) gives the fuzzy set represented by one parameter μ only. (The orthogonal projection transfers $x'' \in ABC$ into $x''' \in CA$.) As it was shown in Szmidi and Kacprzyk (2000), distances between intuitionistic fuzzy sets should be calculated taking into account three parameters describing an intuitionistic fuzzy set.

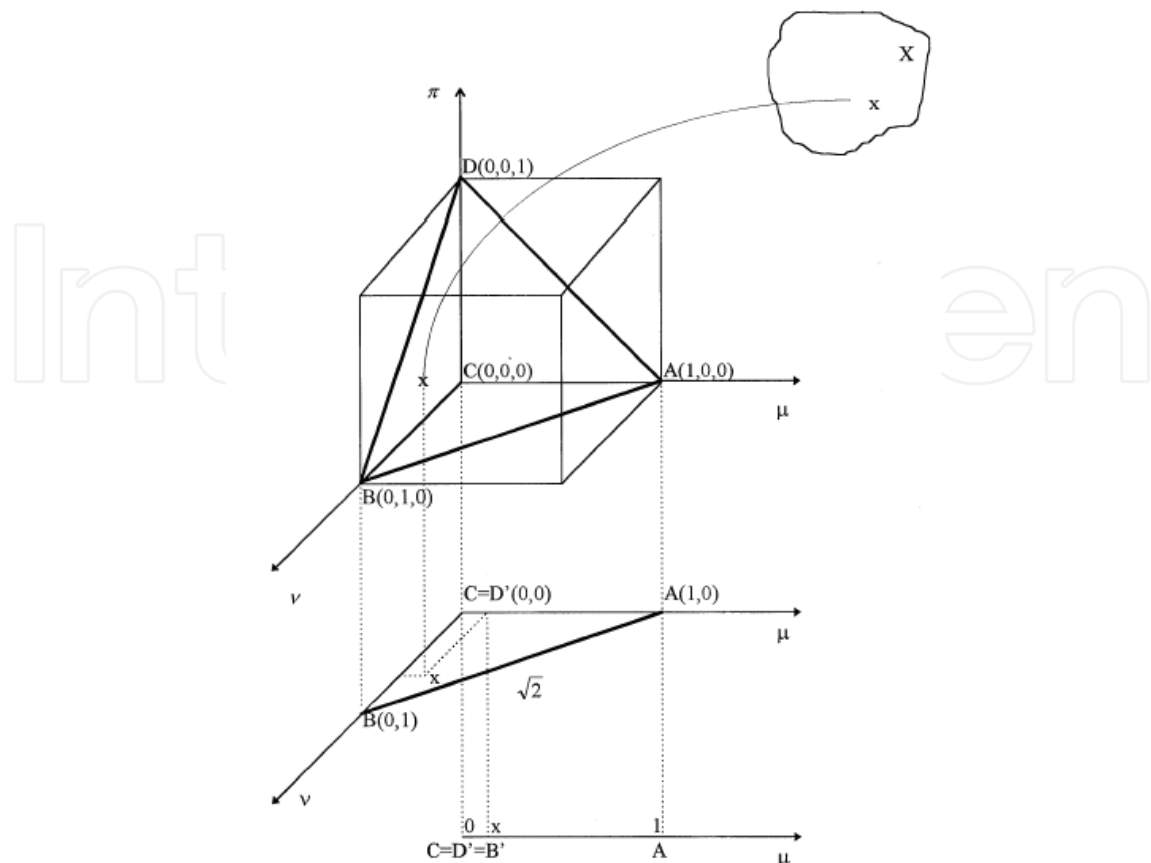


Fig. 4. A geometrical interpretation of an intuitionistic fuzzy set (Data Source: Szmidt & Kacprzyk, 2000)

Second, in order to transfer the subjective valuation into real valuation, our proposed entropy-based defuzzification method is based on the Luca-Termini Axioms and Lee et al. (2001), and developed defined as follows:

- (1) Let $X = \{r_1, r_2, \dots, r_n\}$ be a universal set with elements r_i distributed in a pattern space, where $i = 1, 2, 3, \dots, n$.
- (2) Let \tilde{A} be a fuzzy set defined on an interval of pattern space which contains k elements ($k < n$). The mapped membership degree of the element r_i with the fuzzy set \tilde{A} is denoted by $\mu_{\tilde{A}}(r_i)$.
- (3) Let C_1, C_2, \dots, C_m represent m classes into which the n elements are divided.
- (4) Let $S_{C_j}(r_n)$ denote a set of elements of class j on the universal set X . It is a subset of the universal set X .
- (5) The match degree D_j with the fuzzy set \tilde{A} for the elements of class j in an interval, where $j = 1, 2, \dots, m$, is defined as

$$D_j = \frac{\sum_{r \in S_{C_j}(r_n)} \mu_{\tilde{A}}(r)}{\sum_{r \in X} \mu_{\tilde{A}}(r)} \quad (20)$$

(6) The fuzzy entropy $FE_{C_j}(\tilde{A})$ of the elements of class j in an interval is defined as

$$FE_{C_j}(\tilde{A}) = -D_j \log_2 D_j \quad (21)$$

(7) The fuzzy entropy $FE(\tilde{A})$ on the universal set X for the elements within an interval is defined as

$$FE(\tilde{A}) = \sum_{j=1}^m FE_{C_j}(\tilde{A}) \quad (22)$$

In Equation (21), the fuzzy entropy $FE_{C_j}(\tilde{A})$ is a non-probabilistic entropy and the match degree D_j in fuzzy entropy is measured via the membership values of occurring elements.

First of all, we will start our investigations with fuzzy states and consider the prior moments $\mu_{\beta}, CV_{\beta}, \mu_{\lambda_0}, CV_{\lambda_0}$ where be recorded with the interval $[i_1, i_2]$ of successive failure data ξ_r ($r = \mu_{\beta}, CV_{\beta}, \mu_{\lambda_0}$, or CV_{λ_0}) (i.e., about 0.3 within the interval $[i_1, i_2]$ for prior moment, respectively), the pattern space shown in the top of the Figure 5 (Hoffman et al., 1996). Subsequently, let us consider the importance weights of the prior parameters are assessed in linguistic terms represented by fuzzy numbers, such as “L” (Low), “M” (Medium)、“H” (High) where provided by experts’ linguistic form, and the membership functions of the three linguistic weight terms with triangular membership function are shown the bottom of the Figure 5. In addition, the value of a membership function can be viewed as the degree to which a pattern belongs to a specified pattern space. Fuzzy entropy of the observed interval $[i_1, i_2]$ has shows in the bottom of the Figure 5.

In order to show the advanced method, let us consider about the both parts of (a) and (b) with the probability formula in the Figure 5, the probability of “star” is: $p(\text{star}) = 4/5 = 0.8$, the probability of “circle” is: $1 - p(\text{star}) = 1/5 = 0.2$. In such situations, decision making depends on numerous factors which limit human ability and increase difficulties to deal with. Since, the result of Shannon’s entropy is:

$$\begin{aligned} H(X) &= -\sum_{j=0}^{N-1} p(x_j) \log_2 p(x_j) \\ &= -p(\star) \log_2 p(\star) - p(\circ) \log_2 p(\circ) \\ &= -0.8 \cdot \log_2 0.8 - 0.2 \cdot \log_2 0.2 \\ &= -0.25756814 - 0.464431896 \\ &= 0.722000036 \end{aligned}$$

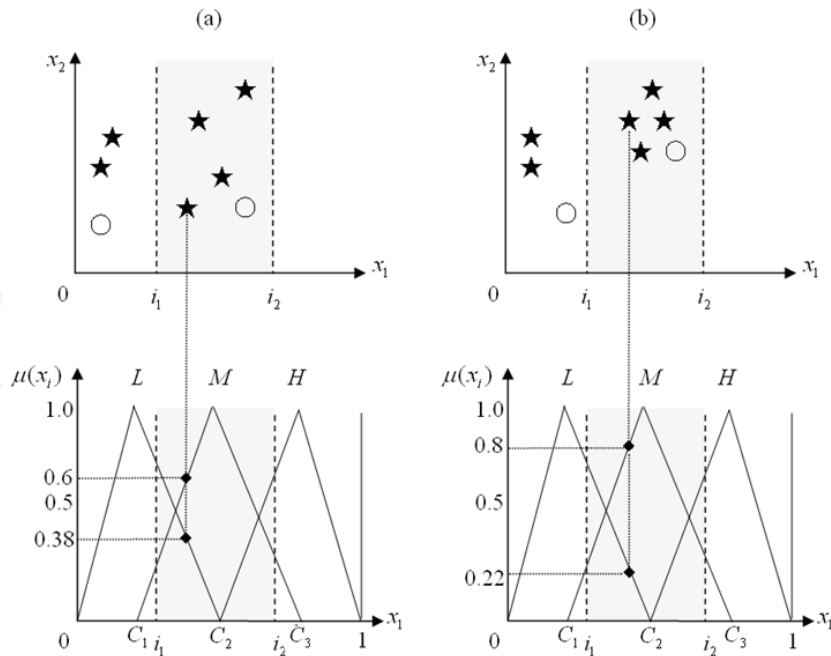


Fig. 5. Two cases of pattern distribution with corresponding membership functions (The symbol of ★ and ○ stand for the degree of membership functions; C_1, C_2, C_3 denote the center of three triangular fuzzy sets, respectively)

As mentioned above, the match degree D_j in fuzzy entropy is based on mapped membership values of elements. Assume we begin by assigning three triangular membership functions with overlapped regions in the pattern space of $[0, 1]$, as shown in Figure 5. The value of a membership function can be viewed as the degree to which a pattern belongs to a specified pattern space. The fuzzy entropy of the interval $[i_1, i_2]$ for the degree of membership functions as show follows:

- (1). From the corresponding membership function \tilde{L} , the total membership degree of “★” is $0.38 + 0.22 + 0 + 0 = 0.7$. Total membership degree of “○” is 0.0.

The match degree of “★” is $D_1 = \frac{0.7}{0.7+0} = 1.0$

The match degree of “○” is $D_2 = \frac{0}{0+0} = 0.0$

The fuzzy entropy of $FE_{C_j}(\tilde{L})$

$$FE_{C_1}(\tilde{L}) = -1.0 \times \log_2(1.0) = 0$$

$$FE_{C_2}(\tilde{L}) = -0.0 \times \log_2(0.0) = 0$$

Hence, the fuzzy entropy of $FE_{C_j}(\tilde{L})$ for the patterns of the interval $[i_1, i_2]$ in the feature dimension x_1 is $FE(\tilde{L}) = FE_{C_1}(\tilde{L}) + FE_{C_2}(\tilde{L}) = 0$.

(2). From the corresponding membership function \tilde{M} , the total membership degree of “★” is $0.6 + 0.88 + 0.85 + 0.57 = 2.3$. Total membership degree of “○” is 0.56.

$$\text{The match degree of “★” is } D_1 = \frac{2.3}{2.3 + 0.56} = 0.80$$

$$\text{The match degree of “○” is } D_2 = \frac{0.56}{2.3 + 0.56} = 0.20$$

The fuzzy entropy of $FE_{C_j}(\tilde{M})$

$$FE_{C_1}(\tilde{M}) = -0.80 \times \log_2(0.80) = 0.258$$

$$FE_{C_2}(\tilde{M}) = -0.20 \times \log_2(0.20) = 0.464$$

Hence, the fuzzy entropy of $FE_{C_j}(\tilde{M})$ for the patterns of the interval $[i_1, i_2]$ in the feature dimension x_1 is $FE(\tilde{M}) = FE_{C_1}(\tilde{M}) + FE_{C_2}(\tilde{M}) = 0.722$.

(3). From the corresponding membership function \tilde{H} , the total membership degree of “★” is $0 + 0 + 0.1 + 0.4 = 0.5$. Total membership degree of “○” is 0.4.

$$\text{The match degree of “★” is } D_1 = \frac{0.5}{0.5 + 0.4} = 0.56$$

$$\text{The match degree of “○” is } D_2 = \frac{0.4}{0.5 + 0.4} = 0.44$$

The fuzzy entropy of $FE_{C_j}(\tilde{H})$

$$FE_{C_1}(\tilde{H}) = -0.56 \times \log_2(0.56) = 0.468$$

$$FE_{C_2}(\tilde{H}) = -0.44 \times \log_2(0.44) = 0.521$$

Hence, the fuzzy entropy of $FE_{C_j}(\tilde{H})$ for the patterns of the interval $[i_1, i_2]$ in the feature dimension x_1 is $FE(\tilde{H}) = FE_{C_1}(\tilde{H}) + FE_{C_2}(\tilde{H}) = 0.989$

Further, we can obtain the whole fuzzy entropy via summation of all corresponding fuzzy entropies as follows:

$$FE = FE_{C_j}(\tilde{L}) + FE(\tilde{M}) + FE(\tilde{H}) = 0 + 0.722 + 0.989 = 1.711$$

From the above illustration, the entropy-based defuzzification method will be able to discriminate the actual distribution of patterns better. By employing membership functions for measure match degrees, the value of entropy not only considers the number of patterns but also takes the actual distribution of patterns into account.

5. Application

In this section we will show the discrimination problems with both cases of fuzzy states and exact information and exact states and fuzzy information, which are studied from the viewpoint of fuzzy arithmetic measures.

5.1 Fuzzy States and Exact Information

Suppose that the states spaces of the four fuzzy moments and the linguistic importance weight of each value assigned by experts are assessed and shown in Table 1.

The Prior Moments of Interval Observations	Linguistic Weight
$\mu_{\lambda_0} = \xi_{\mu_{\lambda_0}} [0.4, 0.7]$	L[0.1, 0.3, 0.5]
$CV_{\lambda_0} = \xi_{CV_{\lambda_0}} [0.3, 0.9]$	M[0.3, 0.5, 0.7]
$\mu_{\beta} = \xi_{\mu_{\beta}} [0.6, 0.8]$	M[0.3, 0.5, 0.7]
$CV_{\beta} = \xi_{CV_{\beta}} [0.4, 0.6]$	H[0.5, 0.7, 0.9]

Table 1. The fuzzy prior moments provided by experts

Furthermore, by applying the fuzzy entropy method, the fuzzy number can be defuzzified into the crisp value. For example the defuzzified value of $\xi_{CV_{\lambda_0}} [0.3, 0.9]$ is attainable as shown in Figure 6.

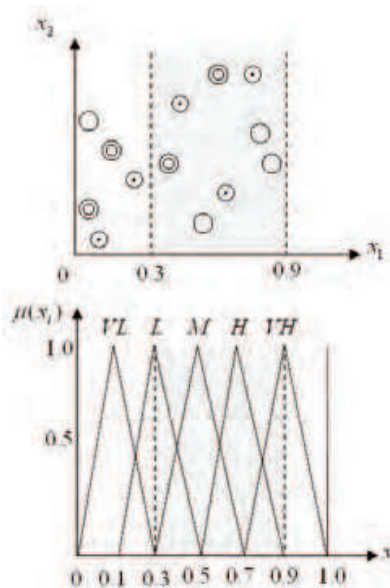


Fig. 6. The patterns of the interval $[0.3, 0.9]$ in the feature dimension $\xi_{CV_{\lambda_0}}$

- (1). From the corresponding membership function \tilde{VL} ,
- The total membership degree of “○” is $0 + 0 + 0 = 0.0$
 - Total membership degree of “⊙” is $0 + 0 + 0 = 0.0$
 - Total membership degree of “⊗” is $0 + 0 + 0 = 0.0$

The match degree of "○" is $D_1 = \frac{0}{0+0+0} = 0.0$

The match degree of "◎" is $D_2 = \frac{0}{0+0+0} = 0.0$

The match degree of "⊙" is $D_3 = \frac{0}{0+0+0} = 0.0$

The fuzzy entropy of $FE_{C_j}(\tilde{V}L)$

$$FE_{C_1}(\tilde{V}L) = -0.0 \times \log_2(0.0) = 0$$

$$FE_{C_2}(\tilde{V}L) = -0.0 \times \log_2(0.0) = 0$$

$$FE_{C_3}(\tilde{V}L) = -0.0 \times \log_2(0.0) = 0$$

Hence, the fuzzy entropy of $FE_{C_j}(\tilde{V}L)$ for the patterns of the interval [0.3, 0.9] in the feature dimension $\xi_{cv_{\lambda_0}}$ is $FE(\tilde{V}L) = FE_{C_1}(\tilde{V}L) + FE_{C_2}(\tilde{V}L) + FE_{C_3}(\tilde{V}L) = 0 + 0 + 0 = 0.0$

(2). From the corresponding membership function \tilde{L} ,

The total membership degree of "○" is $0 + 0 + 0 = 0.0$

Total membership degree of "◎" is $0.6 + 0 = 0.6$

Total membership degree of "⊙" is $0.5 + 0 + 0 = 0.5$

The match degree of "○" is $D_1 = \frac{0}{0+0.6+0.5} = 0.0$

The match degree of "◎" is $D_2 = \frac{0.6}{0+0.6+0.5} = 0.546$

The match degree of "⊙" is $D_3 = \frac{0.5}{0+0.6+0.5} = 0.454$

The fuzzy entropy of $FE_{C_j}(\tilde{L})$

$$FE_{C_1}(\tilde{L}) = -0.0 \times \log_2(0.0) = 0$$

$$FE_{C_2}(\tilde{L}) = -0.546 \times \log_2(0.546) = 0.4767$$

$$FE_{C_3}(\tilde{L}) = -0.454 \times \log_2(0.454) = 0.5173$$

Hence, the fuzzy entropy of $FE_{C_j}(\tilde{L})$ for the patterns of the interval [0.3, 0.9] in the feature dimension $\xi_{cv_{\lambda_0}}$ is $FE(\tilde{L}) = FE_{C_1}(\tilde{L}) + FE_{C_2}(\tilde{L}) + FE_{C_3}(\tilde{L}) = 0 + 0.4767 + 0.5173 = 0.994$

(3). From the corresponding membership function \tilde{M} ,

The total membership degree of "○" is $0.75 + 0 + 0 = 0.75$

Total membership degree of "◎" is $0.35 + 0.50 = 0.85$

Total membership degree of “ \odot ” is $0.55 + 0.4 + 0 = 0.95$

The match degree of “ \circ ” is $D_1 = \frac{0.75}{0.75 + 0.85 + 0.95} = 0.294$

The match degree of “ \odot ” is $D_2 = \frac{0.85}{0.75 + 0.85 + 0.95} = 0.333$

The match degree of “ \ominus ” is $D_3 = \frac{0.5}{0.75 + 0.85 + 0.95} = 0.373$

The fuzzy entropy of $FE_{C_j}(\tilde{M})$

$$FE_{C_1}(\tilde{M}) = -0.294 \times \log_2(0.294) = 0.5192$$

$$FE_{C_2}(\tilde{M}) = -0.333 \times \log_2(0.333) = 0.5283$$

$$FE_{C_3}(\tilde{M}) = -0.373 \times \log_2(0.373) = 0.5307$$

Hence, the fuzzy entropy of $FE_{C_j}(\tilde{M})$ for the patterns of the interval $[0.3, 0.9]$ in the feature dimension $\xi_{cv_{\lambda_0}}$ is

$$FE(\tilde{M}) = FE_{C_1}(\tilde{M}) + FE_{C_2}(\tilde{M}) + FE_{C_3}(\tilde{M}) = 0.5192 + 0.5283 + 0.5307 = 1.5782$$

(4). From the corresponding membership function \tilde{H} ,

The total membership degree of “ \circ ” is $0.15 + 0.5 + 0.2 = 0.85$

Total membership degree of “ \odot ” is $0.0 + 0.40 = 0.40$

Total membership degree of “ \ominus ” is $0.0 + 0.8 + 0.6 = 1.4$

The match degree of “ \circ ” is $D_1 = \frac{0.85}{0.85 + 0.40 + 1.4} = 0.32$

The match degree of “ \odot ” is $D_2 = \frac{0.40}{0.85 + 0.40 + 1.4} = 0.15$

The match degree of “ \ominus ” is $D_3 = \frac{0.14}{0.85 + 0.40 + 1.4} = 0.53$

The fuzzy entropy of $FE_{C_j}(\tilde{H})$

$$FE_{C_1}(\tilde{H}) = -0.32 \times \log_2(0.32) = 0.5260$$

$$FE_{C_2}(\tilde{H}) = -0.15 \times \log_2(0.15) = 0.4105$$

$$FE_{C_3}(\tilde{H}) = -0.53 \times \log_2(0.53) = 0.4854$$

Hence, the fuzzy entropy of $FE_{C_j}(\tilde{H})$ for the patterns of the interval $[0.3, 0.9]$ in the feature dimension $\xi_{cv_{\lambda_0}}$ is

$$FE(\tilde{H}) = FE_{C_1}(\tilde{H}) + FE_{C_2}(\tilde{H}) + FE_{C_3}(\tilde{H}) = 0.5260 + 0.4105 + 0.4854 = 1.4219$$

(5). From the corresponding membership function \tilde{VH} ,

The total membership degree of “○” is $0.0 + 0.5 + 0.8 = 1.3$

Total membership degree of “⊙” is $0.0 + 0.0 = 0.0$

Total membership degree of “⊖” is $0.0 + 0.0 + 0.45 = 0.45$

The match degree of “○” is $D_1 = \frac{1.3}{1.3 + 0.0 + 0.45} = 0.74$

The match degree of “⊙” is $D_2 = \frac{0.0}{1.3 + 0.0 + 0.45} = 0.0$

The match degree of “⊖” is $D_3 = \frac{0.45}{1.3 + 0.0 + 0.45} = 0.26$

The fuzzy entropy of $FE_{C_j}(\tilde{V}H)$

$$FE_{C_1}(\tilde{V}H) = -0.74 \times \log_2(0.74) = 0.3214$$

$$FE_{C_2}(\tilde{V}H) = -0.0 \times \log_2(0.0) = 0.0$$

$$FE_{C_3}(\tilde{V}H) = -0.26 \times \log_2(0.26) = 0.5053$$

Hence, the fuzzy entropy of $FE_{C_j}(\tilde{V}H)$ for the patterns of the interval $[0.3, 0.9]$ in the feature dimension ξ_{cv,λ_0} is

$$FE(\tilde{V}H) = FE_{C_1}(\tilde{V}H) + FE_{C_2}(\tilde{V}H) + FE_{C_3}(\tilde{V}H) = 0.3214 + 0.0 + 0.5053 = 0.8267$$

Finally, we can obtain the whole fuzzy entropy via summation of all corresponding fuzzy entropies as follows:

$$\begin{aligned} FE &= FE(\tilde{V}L) + FE(\tilde{L}) + FE(\tilde{M}) + FE(\tilde{H}) + FE(\tilde{V}H) \\ &= 0.0 + 0.994 + 1.5782 + 1.4219 + 0.8267 \\ &= 4.8208 \end{aligned}$$

Finally, Equations (8) and (9) can be used to study the prior and posterior decision for the decision maker when dealing with the decision problem for deteriorating repairable systems.

5.2 Fuzzy States and Fuzzy Information

When the states and the addition information are both fuzzy, besides the work for the fuzzy prior as described in the previous case, we have to also deal with the problem of defuzzifying the failure data as shown in Table 2.

Failure Data	Fuzzy interval (Hour / 24)	Linguistic Weight
1989.07.06 (ADD_1)	[0.33,0.50]	L[0.1,0.3,0.5]
1989.10.23 (ADD_2)	[0.42,0.58]	M[0.3,0.5,0.7]
1990.01.12 (ADD_3)	[0.58,0.66]	M[0.3,0.5,0.7]
1990.09.08 (ADD_4)	[0.42,0.50]	H[0.5,0.7,0.9]
1990.11.14 (ADD_5)	[0.54,0.63]	H[0.5,0.7,0.9]

Table 2. The fuzziness of the added failure data

The fuzzy numbers of failure data can also be defuzzified into crisp values and form the likelihood function. Equations (8) and (11) can be used to study the prior and posterior decision for the decision maker when dealing with the decision problem for deteriorating repairable systems. The decision problems for both the previous two cases can be assessed; however, the computing problem in Huang (2001) for the posterior mean of the decision variable is also encountered. If the expected number of failures from the decision time until the system is discarded is used as the decision variable, the numerical integration is still needed for evaluating the values and therefore making the decision.

6. Conclusion

In this chapter, we have presented a method to solve the decision problem of deteriorating repairable systems and we also present an approach to illustrate the fuzzy entropy-based arithmetic approach for modeling experts' epistemic uncertainty in deteriorating repairable systems. The decision process is useful in selecting the best alternative when the deteriorating repairable system associated with alternatives are known in terms of linguistic variables (Zadeh, 1975), in particular, when these linguistic variables can be modeled by fuzzy numbers. In real world situations, the deteriorating phenomena are usually expressed as some degrees of severity. In such case, the proposed decision process can provide more realistic solutions. In this chapter, we have assumed that the importance weights of different criteria are assessed in linguistic terms represented by triangular fuzzy numbers. However, there are still several limitations and further study may undergo by considering other kinds of fuzzy membership function, since it still leaves lots of space for extension.

7. References

- Asai, K.; Tanaka, H.; & Okuda, T. (1975). Decision Making And Its Goal In A Fuzzy Environment, In: Zadeh et al. (Eds) *Fuzzy Sets and Their Applications to Cognitive and Decision Processes*, New York, London.
- Ascher, H.; & Feingold, H. (1984). *Repairable Systems Reliability*, Marcel Dekker, New York.
- Barlow, R; & Proschan, F. (1965). *Mathematical Theory of Reliability*, Wiley, New York.
- Belahut, R. (1987). *Principles and Practice of Information Theory*, Reading, MA: Addison-Wesley.
- Bellman, R.; & Zadeh, L. (1970). Decision Making In A Fuzzy Environment, *Management Science*, Vol. 17, pp. B-141-164.
- Chang, C.; & Cheng, C. (2007). A Bayesian Decision Process with Fuzzy Interpretability for Aging Chronic Disease, *International Journal of Technology Management*, Vol.40, No.1/2/3, pp.176-191.
- Chang, C. (2008). Entropy-Based Defuzzification Method with Experts' Epistemic Uncertainty for Deteriorating Repairable Systems, *The Seventh International Conference on Machine Learning and Applications (ICMLA'08)*, San Diego, California, USA, Dec, 2008.
- Ching, J. et al., (1995). Class-dependent discretization for inductive learning form continuous and mixed-mode data, *IEEE Trans. Pattern Anal. MachineIntell.*, Vol. 17, pp. 641-651.
- Cover, T.; & Thomas, J. (1992). *Elements of Information Theory*. NewYork: Wiley.

- Crow, L. (1974). Reliability Analysis For Complex Repairable Systems in: Proschan, F. and Serfling, R. J. (Eds), Reliability and biometry, Philadelphia, *Society for Industrial and Applied Mathematics*, pp. 379-410.
- De Luca A.; & Termini, S. (1972). A definition of a non-probabilistic entropy in the setting of fuzzy sets theory, *Information and Control*, Vol. 20, pp. 301-312.
- Dompere, K. (1982). *The Theory of Fuzzy Decisions*, Approximate reasoning in decision analysis M.M. Gupta and E. Sanchez (eds.), North-Holland Publishing, pp. 365-379.
- Ferson, S.; Joslyn, C.; Helton, J.; Oberkampf, W.; & Sentz, K. (2004). Summary from the epistemic uncertainty workshop: consensus amid diversity, *Reliab Engng Syst Saf.* Vol. 85, pp. 355-369.
- Fetz, Th.; & Oberguggenberger, M. (2004). Propagation of uncertainty through multivariate functions in the framework of sets of probability measures, *Reliab Engng Syst Saf.* Vol. 85, pp. 73-87.
- Freeling, A. N. S. (1984). *Possibilities Versus Fuzzy Probabilities - Two Alternative Decision Aids* In: Zimmermann et al (Eds.) *Fuzzy Sets and Decision Analysis*, Amsterdam, New York, Oxford, pp. 67-82.
- Fruhwith-Schnatter, S. (1993). On Fuzzy Bayesian Inference, *Fuzzy Sets and Systems*, Vol. 60, pp. 41-58.
- Härtler, G. (1989). The Non-Homogeneous Poisson Process - A Model For The Reliability Of Complex Repairable Systems, *Microelectronics and Reliability*, Vol. 29, No. 3, pp. 381-386.
- Herrera, F.; & Herrera, V. (2000). Linguistic Decision Analysis: Steps For Solving Decision Problems Under Linguistic Information, *Fuzzy Sets And Systems*, Vol. 115, No. 3, pp. 62-82.
- Hisdal, E. (1984). Decision Based On Statements In Natural Language, *TIMS/Studies in the Management Sciences*, Vol.20, pp. 357-381
- Hoffman, M.; Manevitz, L.; & Wong, E. (1996). Fuzzy independence and extended condition probability, *Information Sciences*, Vol. 90, pp. 137-156.
- Huang, Y. (2001). A Decision Model for Deteriorating Repairable Systems, *IIE Transactions*, Vol. 33, No. 6, pp. 479-485.
- Huang, Y.; & Bier, V. (1998). A Natural Conjugate Prior for The Non-Homogeneous Poisson Process With a Power Law Intensity Functions, *Communications in Statistic-Simulations and Computation*. Vol.27, No.2, pp. 525-551.
- Huang, Y.; & Chang, C. (2004). A study of defuzzification with experts' knowledge for deteriorating repairable systems, *European Journal of Operational Research*, Vol.157, No.3, pp. 658-670.
- Kandel, A. (1986). *Fuzzy Mathematical Techniques with Applications*, Addison-Wesley, New York.
- Kaufmann A. (1975). *Introduction to the Theory of Fuzzy Subsets*, Vol. 1: Fundamental Theoretical Elements, Academic Press, New York,
- Kim, J.; Cho C.; & Hyung L. (1998). A note on the set-theoretical defuzzification, *Fuzzy Sets and System*, Vol.98, pp. 337-341.
- Kosko, B. (1986). Fuzzy entropy and conditioning, *Inform. Sci.*, Vol. 40, pp. 165-174, Dec.
- Kosko, B. (1990). Fuzziness vs. probability, *International Journal of General Systems*, Vol. 17, no.2/3, pp. 211-240.
- Kosko, B. (1997). *Fuzzy Engineering*, Prentice-Hall, Englewood Cliffs, N.J.

- Lee, H.; Chen, C.; Chen, J.; & Jou, Y. (2001). An efficient fuzzy classifier with feature selection based on fuzzy entropy, *IEEE Transactions on Systems, Man, and Cybernetics – Part B: Cybernetics*, Vol. 31, No. 3, June.
- Ma, M.; Kandel, A.; & Friedman, M. (2002). Correction to A new approach for defuzzification, *Fuzzy Sets and System*, Vol.128, pp. 133-134.
- Oberkampf, W.; Helton, J.; Joslyn, C.; Wojtkiewicz, S.; & Ferson, S. (2004) Challenge Problems: uncertainty in system response given uncertain parameters, *Reliab Engng Syst Saf.* Vol. 85, pp. 11-19.
- Pal, S.; & Chakraborty, B. (1986). Fuzzy set theoretic measure for automatic feature evaluation, *IEEE Trans. Syst., Man, Cybern.*, Vol. SMC-16, pp. 754-760.
- Renyi, (1961). On the measure of entropy and information, in Proc. *Fourth Berkeley Symp. Math. Statistics Probability*, Vol. 1, Berkeley, CA, pp. 541-561.
- Roubens, M. (1997). Fuzzy And Decision Analysis, *Fuzzy Sets and System*, Vol. 90, pp. 199-206.
- Roychowdhury, S.; & Pedrycz, W. (2001). A Survey of defuzzification strategies, *International Journal of intelligent systems*, Vol.16, pp. 679-695.
- Shannon, C. (1948), A mathematical theory of communication, *Bell Syst.Tech. J.*, Vol. 27, pp. 379-423.
- Stephen, R.; & Donnell, M. (1979). Fuzzy Decision Analysis, *IEEE Transactions on systems, man, and cybernetics*, Vol. SMC-9, No.1, January.
- Szmidt E.; & Kacprzyk, J. (2000) On distances between intuitionistic fuzzy sets, *Fuzzy Sets and Systems*, Vol. 114, pp. 505-518.
- Tong, R.; & Bonissone, P. (1984) Linguistic Solutions To Fuzzy Decision Problem, *TIMS/studies in the management Sciences*, Vol. 20, pp. 323-334.
- Yager, R. (1979). A note on probabilities of fuzzy events, *Information Sciences*, Vol. 18, pp. 113-129.
- Zadeh L. (1965). Fuzzy sets, *Information and Control*, Vol. 8, pp. 338-353.
- Zadeh L. (1983). The role of fuzzy logic in the management of uncertainty in expert systems, *Fuzzy Sets and Systems*, Vol. 11, pp. 199-227.
- Zadeh, L. (1975). The Concept of a Linguistic Variable and Its Application to Approximate Reasoning – I, *Information Science*, Vol. 8, pp. 199-249.

IntechOpen



Machine Learning

Edited by Yagang Zhang

ISBN 978-953-307-033-9

Hard cover, 438 pages

Publisher InTech

Published online 01, February, 2010

Published in print edition February, 2010

Machine learning techniques have the potential of alleviating the complexity of knowledge acquisition. This book presents today's state and development tendencies of machine learning. It is a multi-author book. Taking into account the large amount of knowledge about machine learning and practice presented in the book, it is divided into three major parts: Introduction, Machine Learning Theory and Applications. Part I focuses on the introduction to machine learning. The author also attempts to promote a new design of thinking machines and development philosophy. Considering the growing complexity and serious difficulties of information processing in machine learning, in Part II of the book, the theoretical foundations of machine learning are considered, and they mainly include self-organizing maps (SOMs), clustering, artificial neural networks, nonlinear control, fuzzy system and knowledge-based system (KBS). Part III contains selected applications of various machine learning approaches, from flight delays, network intrusion, immune system, ship design to CT and RNA target prediction. The book will be of interest to industrial engineers and scientists as well as academics who wish to pursue machine learning. The book is intended for both graduate and postgraduate students in fields such as computer science, cybernetics, system sciences, engineering, statistics, and social sciences, and as a reference for software professionals and practitioners.

How to reference

In order to correctly reference this scholarly work, feel free to copy and paste the following:

Chi-Chang Chang, Ruey-Shin Chen and Pei-Ran Sun (2010). Applying Fuzzy Bayesian Maximum Entropy to Extrapolating Deterioration in Repairable Systems, Machine Learning, Yagang Zhang (Ed.), ISBN: 978-953-307-033-9, InTech, Available from: <http://www.intechopen.com/books/machine-learning/applying-fuzzy-bayesian-maximum-entropy-to-extrapolating-deterioration-in-repairable-systems>

INTECH
open science | open minds

InTech Europe

University Campus STeP Ri
Slavka Krautzeka 83/A
51000 Rijeka, Croatia
Phone: +385 (51) 770 447
Fax: +385 (51) 686 166
www.intechopen.com

InTech China

Unit 405, Office Block, Hotel Equatorial Shanghai
No.65, Yan An Road (West), Shanghai, 200040, China
中国上海市延安西路65号上海国际贵都大饭店办公楼405单元
Phone: +86-21-62489820
Fax: +86-21-62489821

© 2010 The Author(s). Licensee IntechOpen. This chapter is distributed under the terms of the [Creative Commons Attribution-NonCommercial-ShareAlike-3.0 License](#), which permits use, distribution and reproduction for non-commercial purposes, provided the original is properly cited and derivative works building on this content are distributed under the same license.

IntechOpen

IntechOpen