

# We are IntechOpen, the world's leading publisher of Open Access books Built by scientists, for scientists

## 4,800

Open access books available

## 122,000

International authors and editors

## 135M

Downloads

Our authors are among the

## 154

Countries delivered to

## TOP 1%

most cited scientists

## 12.2%

Contributors from top 500 universities

**WEB OF SCIENCE™**Selection of our books indexed in the Book Citation Index  
in Web of Science™ Core Collection (BKCI)

## Interested in publishing with us? Contact [book.department@intechopen.com](mailto:book.department@intechopen.com)

Numbers displayed above are based on latest data collected.

For more information visit [www.intechopen.com](http://www.intechopen.com)

# Towards high performance anodes with fast charge/discharge rate for LIB based electrical vehicles

Hong Soo Choi and Chong Rae Park\*  
*Carbon Nanomaterials Design Lab., Global Research Lab,  
Research Institute of Advanced Materials,  
Seoul National University (Department of Materials Science and Engineering)  
Korea*

## 1. Introduction

The increasing environmental problems nowadays, such as running out of fossil fuels, global warming, and pollution impact give a major impetus to the development of electrical vehicles (EVs) or hybrid electrical vehicles (HEVs) to substitute for the combustion engine-based vehicles. (Howell, 2008; Tarascon & Armand, 2001) However, full EVs that are run with electrical device only are not yet available due to the unsatisfied performance of battery. The automakers have thus focused on the development of HEVs, which are operated with dual energy sources, viz. the internal combustion heat of conventional fuels and electricity from electrical device without additional electrical charging process. As a transient type, the plug-in HEVs (PHEVs) are drawing much attention of the automakers since it is possible for the PHEVs to charge the battery in the non-use time. In addition, PHEVs have the higher fuel efficiency because the fuel can be the main energy source on the exhaustion of the battery.

Lithium ion batteries (LIBs) may be the one of the first consideration as an energy storage system for electrical vehicles because of higher energy density, power density, and cycle property than other comparable battery systems (Tarascon & Armand, 2001) (see Figure 1). However, in spite of these merits, the commercialized LIBs for HEVs should be much improved in both energy storage capacities such as energy density and power density, and cycle property including capacity retention and Coulombic efficiency in order to meet the requirements by U.S. department of energy (USDOE) (Howell, 2008) as listed in Table 1.

Figure 2 contrasts, on the basis of 40 miles driving range, the USDOE's performance requirements of the anode in LIBs for PHEVs with the performance of the currently commercialized LIBs (Arico et al., 2005). It is clearly seen that the power density of currently available anodes is far below the DOE's requirement although the energy density has already got over the requirement. Power density is the available power per unit time which is given by the following equation (1).

$$\text{Power density} = Q \times \Delta V \quad (1)$$

Here,  $Q$  is charge density (A/kg) which is directly related to the C/D rate, and  $\Delta V$  is potential difference per unit time (V/s). This equation obviously shows that the higher power density can be achieved when the faster C/D rate is available. Therefore, the focus of the current researches for LIB anodes is on increasing the C/D rate and hence power density without aggravation of cycle property. Thus, we will limit the scope of this review to discussing the state of the art in the LIB anodes particularly for PHEVs.

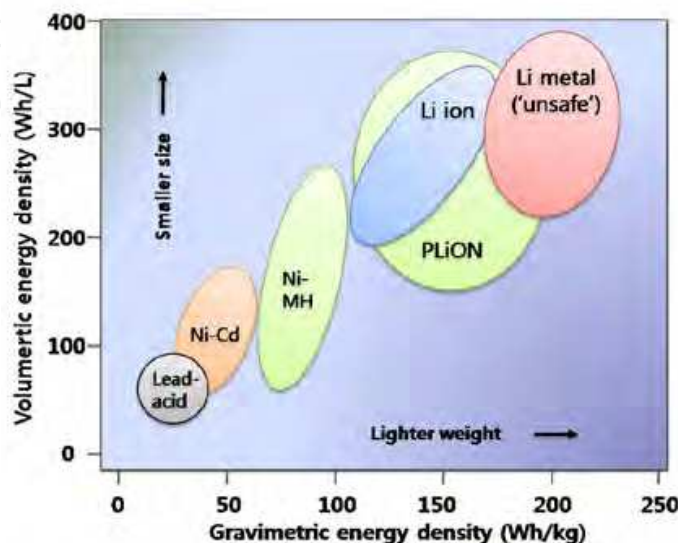


Fig. 1. Comparison of the different battery technologies in terms of volumetric and gravimetric energy density (Tarascon & Armand, 2001).

Characteristics at the End of Life		High Power /Energy Ratio Battery	High Energy /Power Ratio Battery
Reference Equivalent Electric Range	miles	10	40
Peak Pulse Discharge Power (2 sec/10 sec)	kW	50/45	46/38
Peak Region Pulse Power (10 sec)	kW	30	25
Available Energy for CD (Charge Depleting) Mode, 10 kW Rate	kWh	3.4	11.6
Available Energy in Charge Sustaining (CS) Mode	kWh	0.5	0.3
CD Life	Cycles	5,000	5,000
CS HEV Cycle Life, 50 Wh Profile	Cycles	300,000	300,000
Calendar Life, 35°C	year	15	15
Maximum System Weight	kg	60	120
Maximum System Volume	Liter	40	80
System Recharge Rate at 30°C	kW	1.4 (120V/15A)	1.4 (120V/15A)
Unassisted Operating & Charging Temperature	°C	-30 to +52	-30 to +52
Maximum System Price @ 100k units/yr	\$	\$1,700	\$3,400

Table 1. USDOE's battery performance requirements for PHEVs (Howell, 2008)

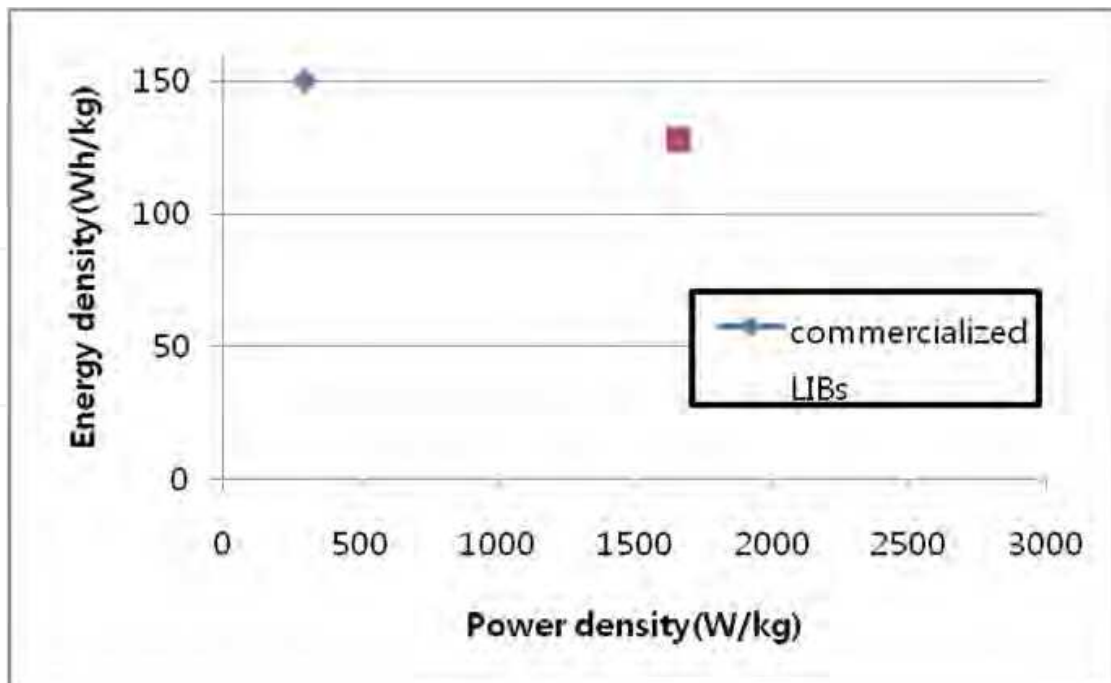


Fig. 2. Energy storage performance of the commercialized LIBs and the USDOE's goal.

\*Each energy density and power density of the goal from DOE is calculated on the basis of 40 mile run of PHEVs. The mass of anode is assumed to be 25 % of whole battery mass, and ratio of active material in the anode is assumed to be 80% of anode mass. Working voltage of the batteries is assumed to be 3V.

## 2. Performance deterioration of the carbon anodes with fast C/D rate

### 2.1 Performance limitation of carbon anodes for electrical vehicles

The commercial anode material of LIBs is carbon materials, which have replaced the earlier lithium metal and lithium-metal composites, and categorized into graphite, hard carbon and soft carbon with a crystalline state. (Julien & Stoynev, 1999; Wakihara, 2001) Most widely used carbon-based material is graphite that is cheap, and has high Coulombic efficiency and 372 mAh/g of theoretical specific capacity (Arico et al., 2005). The C/D process of the graphite anode is based on the intercalation and deintercalation of Li ions with 0.1~0.2 V of redox potential (Wakihara, 2001). This C/D mechanism can be a basis of the cell safety, because the intercalated Li ions are not deposited on the surface of the graphite anode preventing dendrite formation during charging process. The intercalation of Li ions between graphene galleries provides a good basis for excellent cycle performance due to a small volume change. Also, 0.1~0.2 V of Li<sup>+</sup> redox potential, close to potential of Li metal, contributes to sufficiently high power density for electrical vehicles.

However, as can be seen in Figure 3, untreated natural graphite shows capacity deterioration with increasing cycle numbers, particularly as the charging rate increases. On the application of LIBs to PHEVs, this capacity deterioration with fast C/D rate can be detrimental because the battery should survive fast C/D cycles depending on the duty cycles such as uphill climbing and acceleration of the vehicle.

There have naturally been a variety of researches to overcome the weakness of graphite anode or to find substitute materials for graphites. Before introducing such research activities, below are briefly reviewed the origins of capacity deterioration with fast C/D rate of graphites and/or graphite based composite anodes.

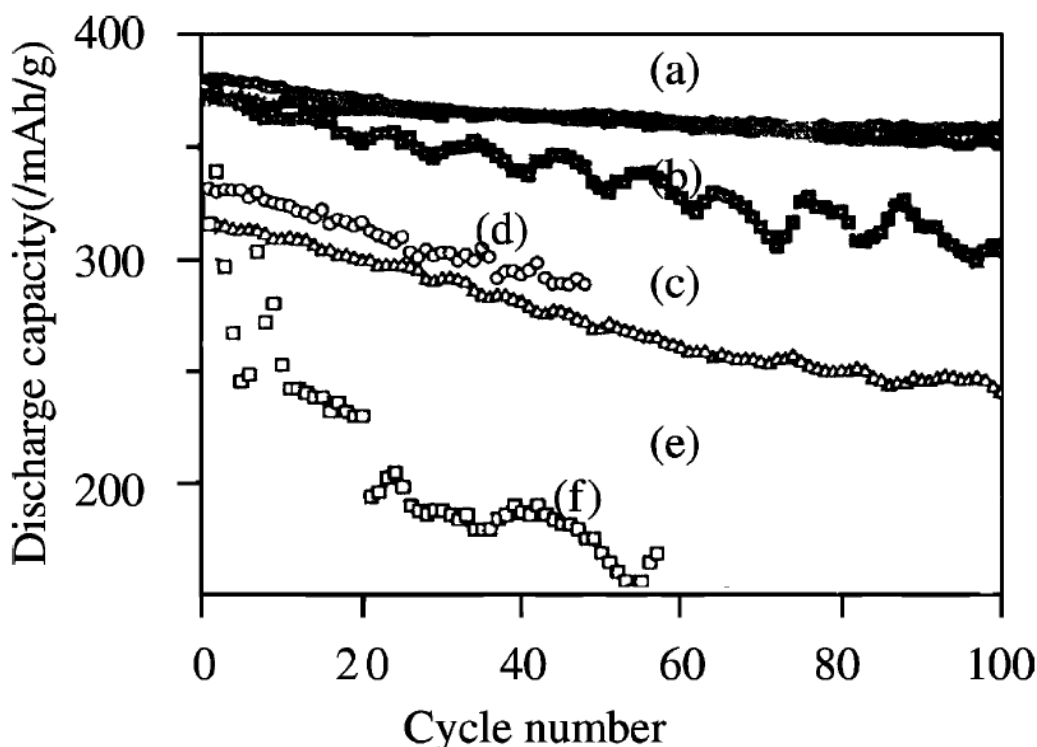


Fig. 3. Cycling performance of natural graphite (curves d, e and f) and Al-treated sample (curves a, b and c): circles, triangles and rectangles represent 0.2 C, 0.5 C and 1 C rate, respectively. (Kim et al., 2001)

### 3. Origins of performance deterioration of the graphite anode with fast C/D rate

The electrochemical performance of the anode material of LIBs is best described by Nernst equation of half-cell reaction as shown by equation (2). (Bard & Faulkner, 2001) A general half-cell reaction on the surface of the active material of the anode is



where  $v_O$  and  $v_R$  are stoichiometric coefficients for oxidant and reductant, respectively, in this reaction. At equilibrium, the energy obtainable from equation (2) is given by the passed charge times the reversible potential difference. Therefore, the reaction on the surface of the active material in the anode is described by equation (3)

$$\Delta G = -nFE \quad (3)$$

where  $\Delta G$  is Gibbs free energy of the reaction,  $n$  is the number of the passed electrons per reacted Li atom,  $F$  is the charge of a mole of electron (about 96500 C), and  $E$  is electromotive force (emf) of the cell reaction. This equation highlights the kinetic nature of electron transportation, being expressed by  $E$  of the electrostatic quantity, and the thermodynamics nature of redox reaction of Li ions,  $\Delta G$ .

Based on equation (2), the following equation (4) can be developed.

$$E_{\text{anode}} = E_{\text{anode}}^0 - \left( \frac{RT}{nF} \right) \ln \frac{A_{\text{anodic}}}{A_{\text{cathodic}}} \quad (4)$$

Here,  $E_{\text{anode}}$  and  $E_{\text{anode}}^0$  are the anode half-cell potential and standard half-cell potential, respectively,  $R$  is the ideal gas constant ( $8.314 \text{ J/molK}^{-1}$ ), and  $A_{\text{anodic}}$  and  $A_{\text{cathodic}}$  are the chemical activities of anodic and cathodic reactions, respectively.

The C/D process of LIBs, as shown in Figure 4, includes (1) the redox reactions on the surface of the electrodes and (2) charge (including both ions and electrons) transfer process.

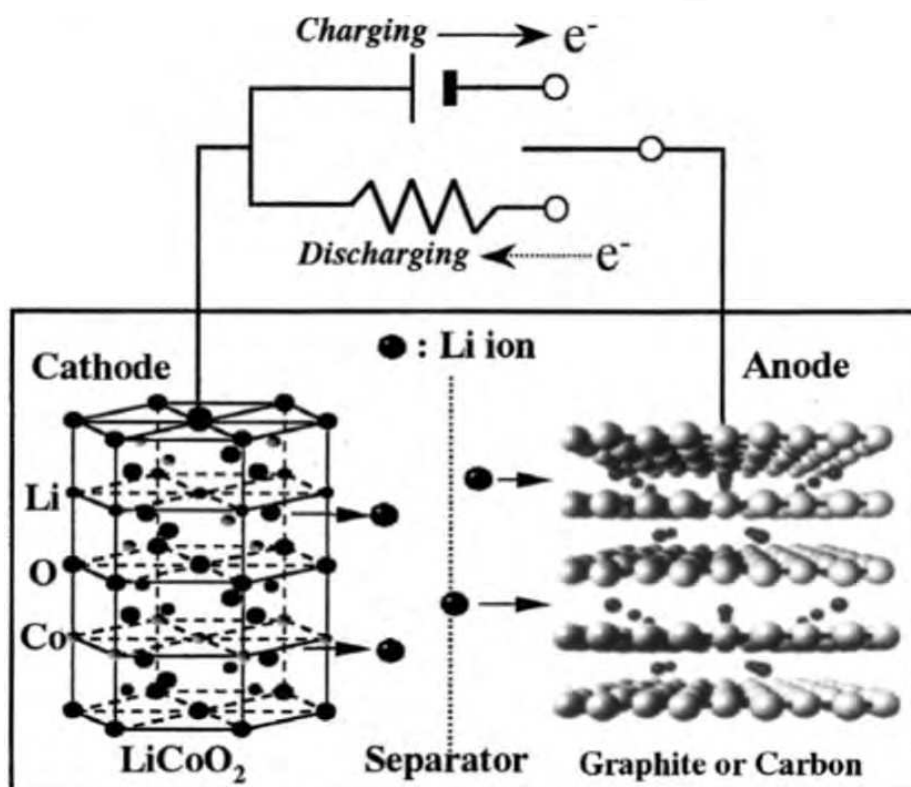


Fig. 4. Charging-discharging mechanism of Li ion secondary battery (Endo et al., 2000).

Basically, based on generally accepted assumption of negligible mass transfer in the electrolyte due to the presence of excess supporting electrolytes in the LIBs, the rate of charge transfer on the surface of the electrode can be generally described with the Butler-Volmer equation (Bard & Faulkner, 2001; Julien & Stoyanov, 1999) (equation 5) that contains the natures of both electrons and ions although the detail mechanism is slightly different with kinds of active materials: for example, diffusion and intercalation of Li ions for graphite (Endo et al., 2000) whereas diffusion and alloying for elemental metals (Tarascon & Armand, 2001).

$$i = i_0 \left[ e^{\alpha_o f \eta} - e^{-\alpha_r f \eta} \right] \quad (5)$$

where  $i_0$  is exchange current, which indicates the zero net current at equilibrium with Faradaic activity,  $\alpha_O$  and  $\alpha_R$  are transfer coefficient of oxidation and reduction reactions, respectively, indicating the symmetry of the energy barrier,  $f=F/RT$  ( $F$  : Faraday constant), and  $\eta (=E-E_{eq})$  is overpotential, being the measure of the potential difference between thermodynamically determined potential at equilibrium ( $E_{eq}$ ) and experimentally measured redox potential ( $E$ ) due to electrochemical reaction with electrons and ions.

The equation itself shows clearly that to enhance C/D performance of LIB anodes the kinetics of electron and ion transportation on and/or in the anode material should be improved.

### 3.1 Important factors influencing the C/D performance of LIB carbon anodes

The practical LIB system consists of active materials, e.g. graphites, conducting materials, e.g. carbon black, and binder materials, e.g. polyvinylidene fluoride (PVDFs). In this kind of structure the kinetics of electron and ion transportations is influenced by many different factors. From a viewpoint of electron transportation, the movements of electrons from current collector to active materials and from the surface to the inside the active materials are crucial. In this sense, the electron conductivities of the conductive materials including carbon blacks and active materials connected by the binder including PVDFs become very important factors determining the C/D performance of LIB anodes.

On the other hand, Li ions move from the cathode through electrolytes to the surface and then diffuse into the graphites. It is therefore very important that the electrolytes and the active materials should have excellent ion conductivity to minimize the internal resistance of the cell. However, the ionic conductivity of the electrolyte used in practical LIBs is about  $10^{-2}$  S/cm, which is quite lower value than that of aqueous electrolytes. (Wakihara, 2001) Moreover, as the reduction reaction of Li ions occurs on the surface of the active materials the physico-chemical nature of the active materials is another important influencing parameter on the C/D performance of the LIB anodes.

The fabrication factors of the anode, for example, mixing ratio, thickness of electrode, and etc., can also influence the kinetics of electron and ion transportation because these variables affect the formation of percolation pathway of electrons and/or ions. Indeed, Dominko et al. (2001) showed that good contact between each component materials of the electrode, which was achieved by homogeneous distribution of carbon blacks, is an important factor for the performance of LIBs as shown in Figure 5.

In the case of fast C/D rate circumstance as in electrical vehicles whereby rapid charge transfer occurs, the above-mentioned fabrication variables may become important factors, although those are negligibly small in slow rate C/D process. However, to avoid the diversion of the present review, we will limit our discussion on the influential factors directly related to the active materials themselves.

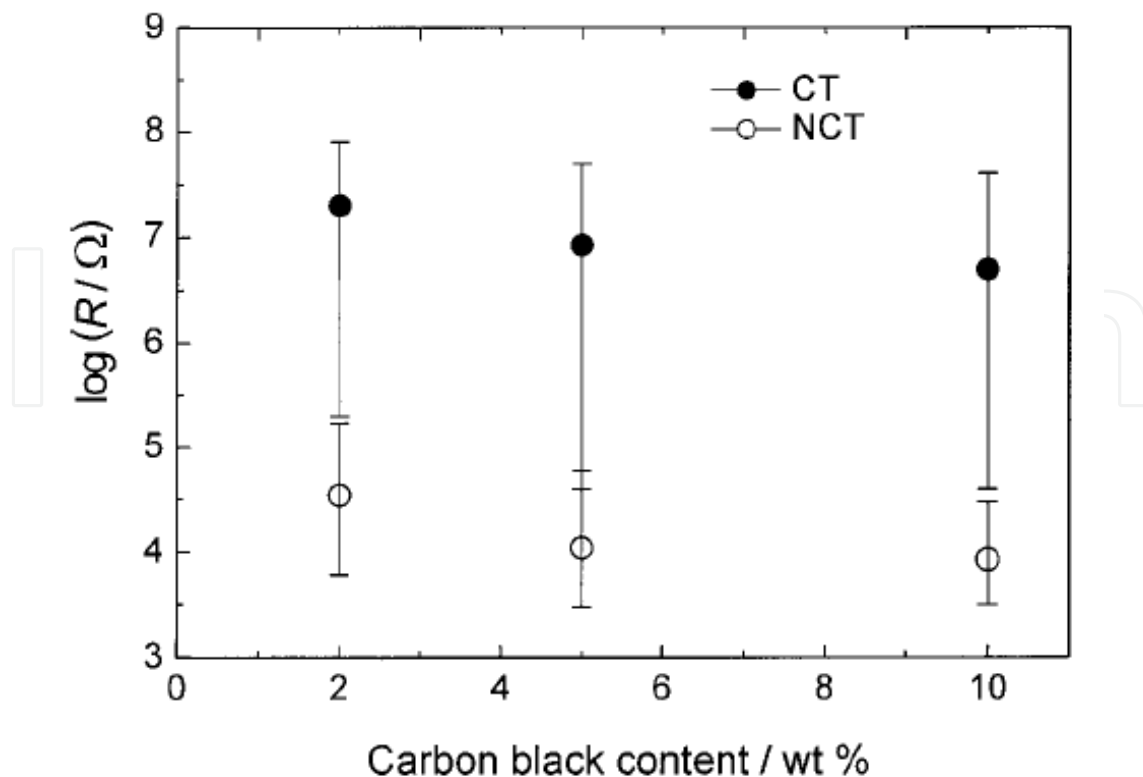


Fig. 5. Dependence of microcontact resistances ( $R$ ) around active particles on carbon black content. Each bar represents the span of many (10~20) resistance measurements on various particles on the surface of the same pellet. Circles represent average values of the given series. (Dominko et al., 2001)

### 3.2 Origin of performance deterioration of carbon anodes with fast C/D rates

Despite that a fast rechargeable performance is one of the most important properties required for electrical vehicles the presently available commercialized LIBs show a poor performance in the fast charge/discharge circumstances. For example, the graphite anode shows decay in the specific capacity to ~350 mA/g at over 1C C/D rate (see Figure 3). We will briefly deliberate on the possible origins of this performance deterioration of carbon anodes with fast C/D rates.

#### 3.2.1 Poor electron transportation with fast C/D rates

In the case of fast C/D process, the electron transportation can be influenced by different factors from those for normal or slow C/D rates. For example, poor electron transportation in the anode may arise from three different origins, viz. (1) contact problem between the current collect and the electrode component, (2) low electronic conductivity of the electrode components, and (3) low electronic conductivity of active material.

##### (1) Poor contact at the interface of the electrode

There are two kinds of the concerned interfaces in the LIB electrodes, viz. the interfaces between the current collect and the electrode components and between the components of the electrode. Since these interfaces play a role of electron transportation pathway, good



contact at the interfaces can lead to excellent cell performance. In particular, under a fast C/D process, there can be a large volume deformation of the active materials, which originates from lithiation and delithiation. If there exists a hysteresis in the volume deformation, then the interfacial contact cannot be ensured, which directly leads to deterioration of the electrode performance. Indeed, as can be seen in Figure 6, this phenomenon is common to the case of elemental metal electrodes, such as Si, Sn, and Sb, even under slow C/D rate circumstances. (Julien & Stoynov, 1999)

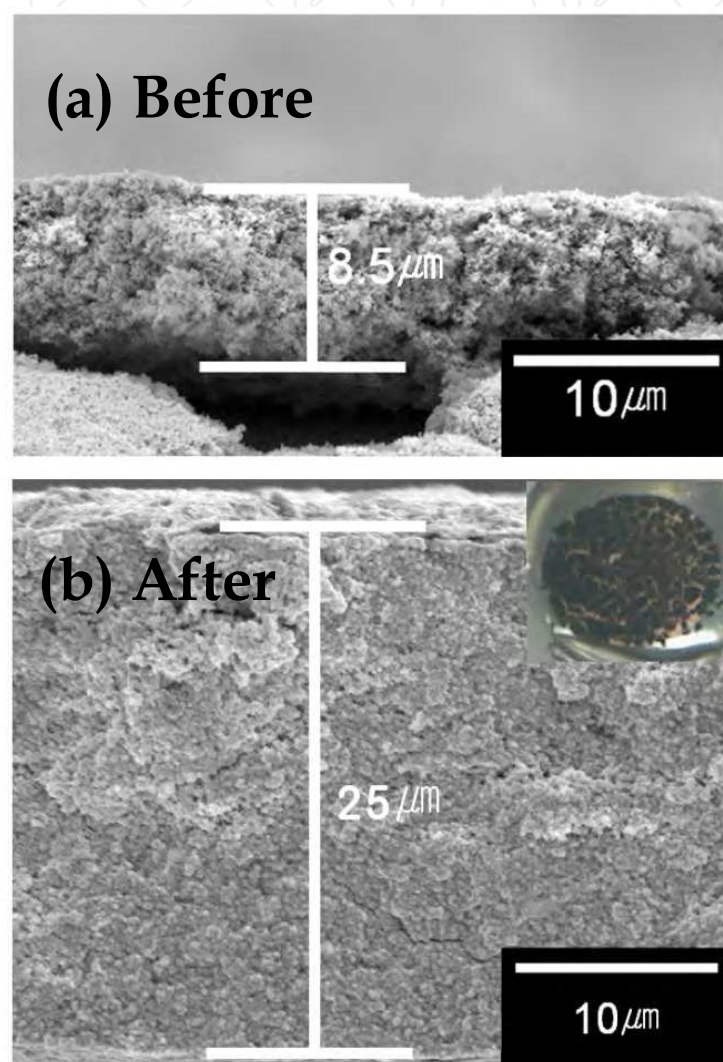


Fig. 6. The volume deformation before (a) and after (b) 1 cycle of C/D process with 50 mA/g charging rate and the resultant cracks (inset of (b)) of the Si-nanoparticle based anode.

In the case of carbon anodes, the volume deformation is not so big as that of metallic anode but still an influential factor of the fast C/D performance. (Yazami, 1999)(also see Figure 3.) Figure 7 illustrates the expansion of the space between graphene sheets during C/D process and the formation of thin film on the surface of graphites due to the deposition of electrolyte decomposition products (Figure 7(b), and the resultant performance deterioration (Figure 7(a)). (Besenhard et al., 1995)

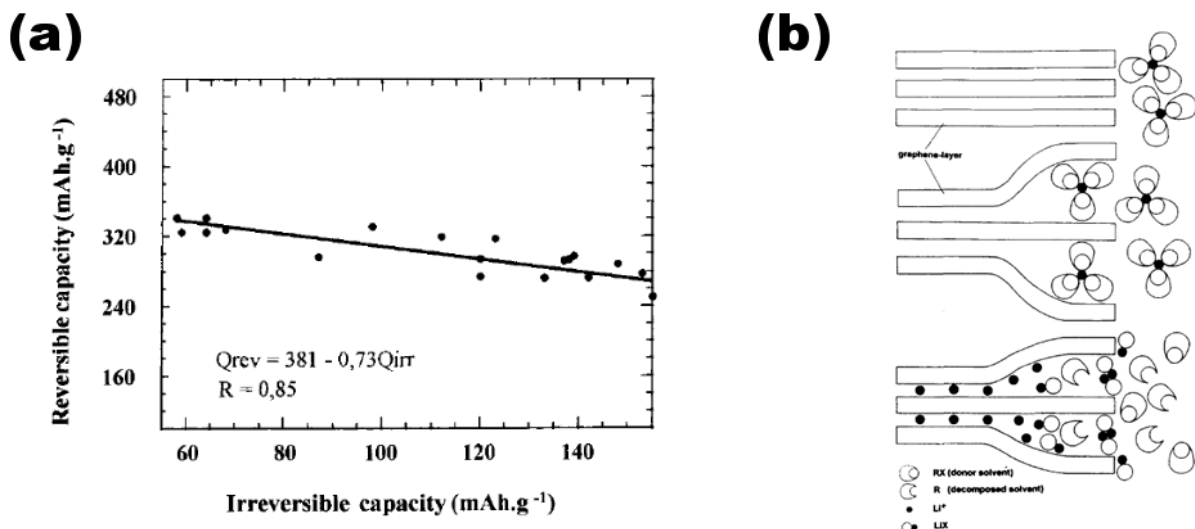


Fig. 7. (a)  $Q_{rev}$  vs.  $Q_{irr}$  linear dependence for Li/1 M LiPF<sub>6</sub>; EC(1):DMC(1):DME(2)/Graphite cells under cycle rate of 0.2C at the ambient temperature. (Yazami, 1999) (b) Schematic illustration of the film forming mechanism via decomposition of Li(solvy)<sub>n</sub>C<sub>n</sub>. (Besenhard et al., 1995)

## (2) Low electronic conductivity of the component materials of carbon anode

The electronic conductivity ( $\kappa$ ) of the graphite anode system can be generally described by the following equation (Bard & Faulkner, 2001)

$$\kappa = F \sum |z_e| u_e C_e \quad (6)$$

where  $z_e$  is the charge of electron,  $u_e$  is the mobility of electron, and  $C_e$  is the concentration of electron. As predicted by equation (6), the electronic conductivity is directly related to the electron mobility in the system, which varies with many factors such as morphology and surface nature of the active material. In most of commercial carbon anode systems, granular graphites of which electronic conductivity is about 10<sup>-1</sup>~10<sup>-4</sup> S/cm are intermixed with conducting carbon blacks of the conductivity of about 10<sup>-2</sup> S/cm (Brett & Brett, 1993) and polyvinyliden fluorides (PVDFs) that have the conductivity of about 10<sup>-13</sup> S/cm (Ji & Jiang, 2006). It is therefore necessary to considerably improve the electronic conductivity of the component materials of carbon anodes. Table 2 shows the electronic conductivity of various carbon materials used in the commercialized LIBs.

### 3.2.2 Poor ionic transportation in the carbon anode with fast C/D rate

As with the issue of electron transportation, the ionic conductivity is a counter factor governing the performance deterioration with fast C/D rate. During C/D process of LIBs, Li ions travel from the cathode via electrolytes to the surface of the anode. The efficiency of the electrode performance is therefore strongly influenced by the efficiency of the charge transfer from one to another component material of the electrode as described by Butler-Volmer equation. Especially, under fast C/D rate conditions, the ions have to transfer fast enough to maximize its partition to the redox reactions on the anode surface. In this sense, the electrolytes should have excellent charge transfer efficiency. Also, after reaching of the

ions to the anode surface, the effective participation of the ions to the redox reaction is governed by the physico-chemical surface nature of the carbon active material.

	Resistivity ( $\Omega\cdot\text{cm}$ )
HOPG (highly ordered pyrrolytic graphite), a-axis	$4 \times 10^{-4}$
HOPG (highly ordered pyrrolytic graphite), c-axis	0.17
Randomly oriented graphite (Ultracarbon UF-4s grade)	$1 \times 10^{-3}$
Carbon black (Spheron-6)	0.05

Table 2. Electronic conductivity of various carbon materials (Brett & Brett, 1993)

Basically, the ionic charge flux in an electrolyte can be described by equation (7) because Li ions far away from the electrode migrate by mass transfer mechanism due to almost zero concentration gradient in bulk solution.

$$J_{\text{Li}^+} = |z_i| F u_i C_i \frac{d\Phi}{dx} \quad (7)$$

where  $z_i$  is the charge of Li ion,  $F$  is Faraday constant,  $u_i$  is the mobility of Li ion, the term of  $F \times u_i = \kappa$  is the ionic conductivity in the electrolyte,  $C_i$  is the concentration of Li ions, and  $d\Phi/dx$  is the potential difference between the electrodes. That is, in a given LIB system, the Li ion flux depends on the Li ion concentration and the ionic conductivity in the electrolytes. In actual uses of LIBs, excess amount of nonelectroactive supporting electrolyte, for example  $\text{LiBF}_6$ , is being used in order to minimize ionic mass transfer by migration and concurrently to maximize the charge transfer by diffusion. This excess supporting electrolyte helps to decrease the solution resistance and improve the accuracy of working electrode potential, and consequently guarantees a uniform ionic strength irrespective of some fluctuation in the amount of ions. (Bard & Faulkner, 2001) To achieve fast ionic transfer in the electrolyte, it is therefore important to secure a continuous ionic pathway to the surface of active materials in the anode system.

On the surface of the active material, graphite, the kinetics of surface positive charge transfer follows Butler-Volmer equation. This kinetics also follows diffusion migration theory due to the uses of supporting electrolyte and ultramicroelectrode (UME) of small-sized active materials. At a steady state or a quasi-steady state of UMEs, the surface current of UMEs can be described by equation (8). (Bard & Faulkner, 2001)

$$i = n F A m_i C_i \quad (8)$$

Here,  $A$  is the surface area of the UME,  $m_i$  is the mass transfer coefficient, and  $C_i$  is the ionic concentration on the surface of the UME. As the surface area,  $A$ , and the mass transfer coefficient,  $m_i$ , vary with morphology of UMEs, it is important to control shape and size of the active materials so that the shortest charge diffusion path can be ensured. Indeed, the charge transfer time per each Li ion in the electrode,  $T$ , is directly related to the diffusion

path (  $d_i$  ) as shown in equation (9), being based on the interstitial diffusion. (Bard & Faulkner, 2001; Porter & Easterling, 1991)

$$T = \frac{d_i^2}{\alpha^2 D_i} \quad (9)$$

Here,  $D_i$  is the diffusion coefficient of Li ion and  $\alpha$  is the number of available vacant interstitial sites in the active material lattice, of which number varies with the micro-structure of the active material.

From the above-mentioned theoretical consideration, we can conjecture two approaches to maximizing ion transportations: one is to ensure effective ionic pathways to the active materials in the anode and the other is to increase the ionic transfer rate on and in the active materials. These two goals can be achieved by (1) morphology control and (2) surface modification of the active materials, and (3) appropriate fabrication to ensure homogeneous distribution and good interfacial contact of conducting materials and the active materials in the anode system. The recently developed nanostructured active materials are expected to be effective for high rate of ionic transfer due to huge 'surface area/volume' ratio and short ionic diffusion path. However, many researches using nanoparticles, for example Si nanoparticles (Wang et al., 2004), proved that this approach is not always working because the nanostructured materials tend to aggregate each other, leading to decreasing of accessible surface areas to electrolytes.

#### **4. Strategies for the material-design of high performance anode with fast C/D rate**

In order to achieve good anode performance with fast C/D rate of LIBs for PHEVs, a variety of approaches have been proposed. Below are described the strategies of those researches, most of which are concerned with the aforementioned fundamental issues, viz. the enhancement of electron transportation kinetics and the achievement of high ionic conductivity in the electrode system.

##### **4.1 To enhance the kinetics of electron transportation**

The works on the enhancement of electron transportation kinetics can be categorized into three groups: one group is on the morphology control of active materials, another on the surface modification of active materials, and the other on the synthesis of hybrid and/or composite anode materials.

##### **4.1.1 Morphology control of the active materials**

To have short diffusion path and high transportation rate of electrons without substitution or additional treatment of the active material, morphology control techniques have been adopted (Chan et al., 2008; Cho et al., 2007; Fang et al., 2009; Hu et al., 2007; Kim et al., 2006; Lampe-Onnerud et al., 2001; Park et al., 2007; Subramanian et al., 2006; Takamura et al., 1999; Tao et al., 2007; Wang et al., 2009; Wang et al., 2008; Zaghbi et al., 2003) to fabricate 1D fibrous structures, 2D sheets or films, and 3D porous or specified structures of the active material (Tao et al., 2007). The commercialized graphites are of spherical shape whereby 2D-

laminate structure works for intercalation of Li ions in C/D process. (Endo et al., 2000; Tarascon & Armand, 2001; Wakihara, 2001; Wu et al., 2003) In recent, extensive researches have been expended to finding possible ways of utilizing graphenes as a new class of 2D structure anode material due to its impressive electrical properties. (Makovicka et al., 2009; Nuli et al., 2009; Wang et al., 2009; Yoo et al., 2008)

Generally, 1D fibrous structure is considered an effective system which strengthens the interfacial contacts in the anode system. (Cho et al., 2007; Kim et al., 2006; Xia et al., 2003) For instance, silicon nanowires directly grown on the current collector can enhance the LIBs anode performance under high C/D rates. Figure 8 illustrates that the 1D Si nanowires have the capacity of about 2000 mAh/g even at 1C rate (about 4200 mA/g of C/D rate), arising from the efficient electron pathway secured from good interfacial contact between 1D Si nanowires and the current collector. (Chan et al., 2008) The carbon nanofiber network was also found to exhibit good anodic performance at high C/D rates, (Kim et al., 2006) which originates from good interfacial contacts between the component materials of the anode system and also between the active materials ensuring effective electronic conductivity.

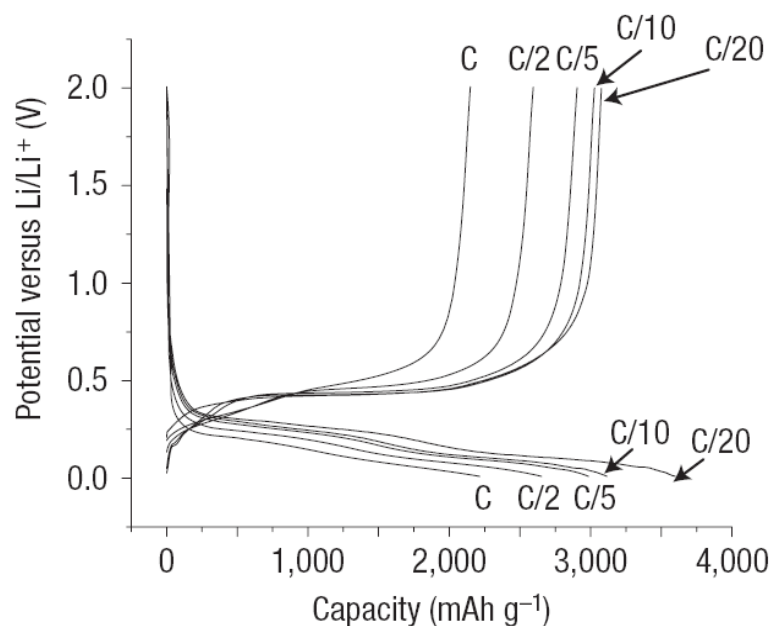


Fig. 8. The voltage profiles of Si nanowires at various C/D rates. (Chan et al., 2008)

In recent, representative 2D carbon structure, graphenes are receiving spot lights due to a large surface to volume ratio and high conductivity. Wang et al. (2009) synthesized graphene nanosheets by reducing graphite oxide and tested anodic performance under 1C C/D rate (about 700 mA/g). The graphene anode indeed exhibited excellent anodic performance at high C/D rate, viz. about 460 mAh/g of reversible specific capacity until 100<sup>th</sup> cycle as shown in Figure 9.

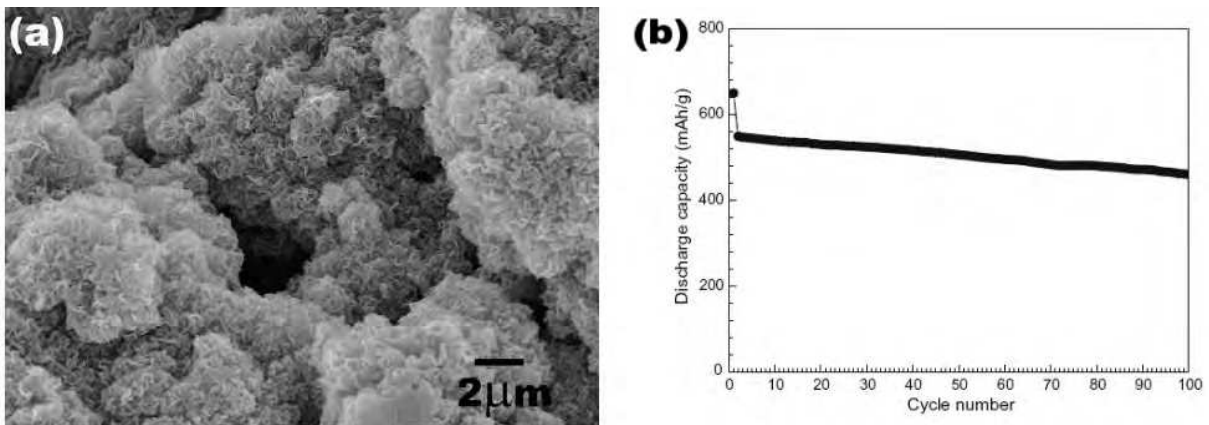


Fig. 9. FE-SEM image of loose graphene nanosheets (a) and discharge capacity (lithium storage) of graphene nanosheet electrode as a function of cycle number at 1C (about 700 mA/g). (Wang et al., 2009)

As for 3D structured anode materials (Tao et al., 2007), porous 3D structure was reported to be helpful to connect the electron pathway effectively. (Long et al., 2004) For example, hierarchical porous carbon structure showed very impressive anodic performance at high C/D rate (Hu et al., 2007) (see Figure 10). This level of anodic performance at high C/D rate is thought to be possible due to good electron pathway and effective Li ions transport via channel-like pores.

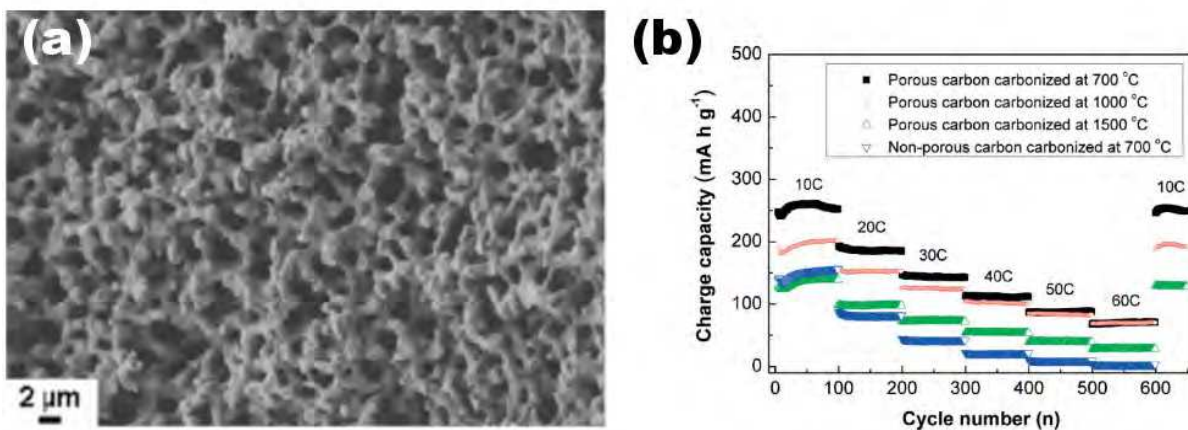


Fig. 10. SEM image of nanocast carbon (carbonized at 700 °C) replica (a) and rate performance of the porous carbon samples carbonized at different temperatures and non-porous carbon from mesophase pitch (carbonized at 700 °C). (Hu et al., 2007)

#### 4.1.2 Surface modifications of active materials

Another way of enhancing electron transportation in the anode system is through surface modifications which are categorized into two groups: one is to coat conducting material on to the surface of the active materials and the other is to dope heteroatoms into metallic oxide anodes to increase electronic conductivity.

##### (1) Coating of conducting material

To coat conducting material is one of the most widely used surface modifications to enhance the high rate capability of the LIBs anode materials. There are two kinds of mainly adopted conducting materials, viz. carbon materials (Dominko et al., 2007; Kim et al., 2009; Kim et al., 2009; Lou et al., 2009; Sharma et al., 2003; Wang et al., 2007; Zhang et al., 2008) and various metals and their oxides (Choi et al., 2004; Fu et al., 2006; Guo et al., 2002; Kottegoda et al., 2002; Nobili et al., 2008; Takamura et al., 1999; Veeraraghavan et al., 2002; Wang et al., 2003; Zhang et al., 2007), such as Al, Au, Ag, Co and Cu. In the case of carbon materials, hydrothermal reaction and gas phase reaction of various organic carbon precursors, for instance, citrate (Dominko et al., 2007), sugar (Wang et al., 2007), glucose (Zhang et al., 2008), ethylene glycol (Kim et al., 2009), Super P MMM carbon (Sharma et al., 2003), and propylene (Kim et al., 2009), have been used to introduce the carbon coating on the surface of the active materials. In the case of metal coating, CVD method and evaporation method have been mainly used due to easy controllability of the properties of the coated metals.

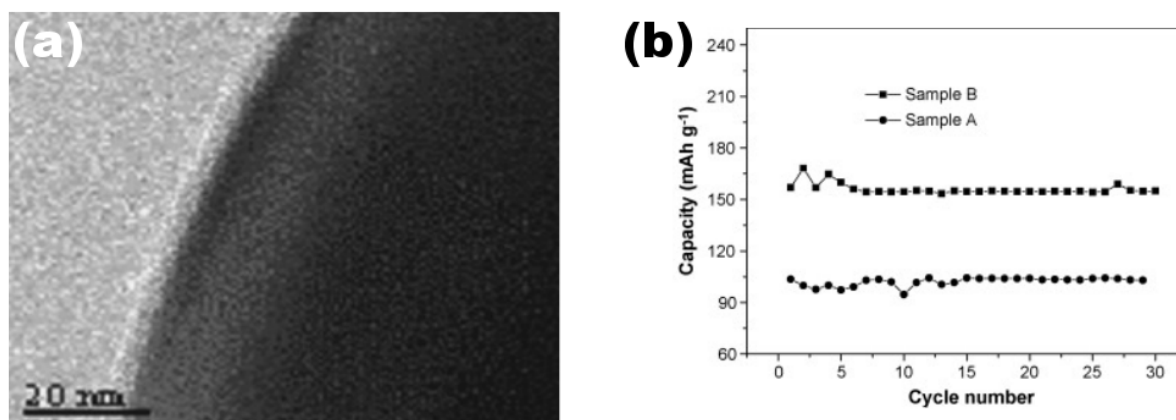


Fig. 11. TEM image of carbon-coated (a) and the relationship of the reversible capacity of the virgin (sample A) and carbon-coated  $\text{Li}_4\text{Ti}_5\text{O}_{12}$  (sample B) at 0.1 C with cycle number (b). (Wang et al., 2007)

Carbon coating has been usually applied to metal or metal oxide anodes to give good electronic conductivity and stability as well as barrier property to the formation of SEI layer (Cui et al., 2007; Derrien et al., 2007; Zhang et al., 2008). For example,  $\text{Li}_4\text{Ti}_5\text{O}_{12}$  has been considered as an attractive anode candidate for HEVs or EVs because of stable theoretical specific capacity of approximately 170 mAh/g and zero strain and negligible volume deformation during C/D process. This material exhibits however poor C/D performance at high rates due to very low electronic conductivity of about  $10^{-13}$  S/cm (Dominko et al., 2007). The carbon coating on this  $\text{Li}_4\text{Ti}_5\text{O}_{12}$  increased twice as high as the specific capacity at 0.1C C/D rate than uncoated one (see Figure 11). The carbon-coated  $\text{SnO}_2$  nanospheres also

showed much enhanced specific capability of 200 mAh/g at 3000 mA/g C/D rate. (Lou et al., 2009) In this case, carbon layer additionally prevented volume expansion of SnO<sub>2</sub> by over 250 %.

Metal coating guarantees the faster charge transfer on the surface of the active materials due to high electronic conductivity of metals. In addition, SEI layers on the coated metals, especially, Cu and Sn, have lower resistivity and higher Li ion de-solvation rate. (Nobili et al., 2008) Therefore, metals have been used to coat graphites or other metals. For example, when a commercial graphite anode was coated with silver and/or nickel, the C/D performance of the anode at high charging rate was improved together with much enhanced discharge capacity as can be seen in Figure 12. (Choi et al., 2004)

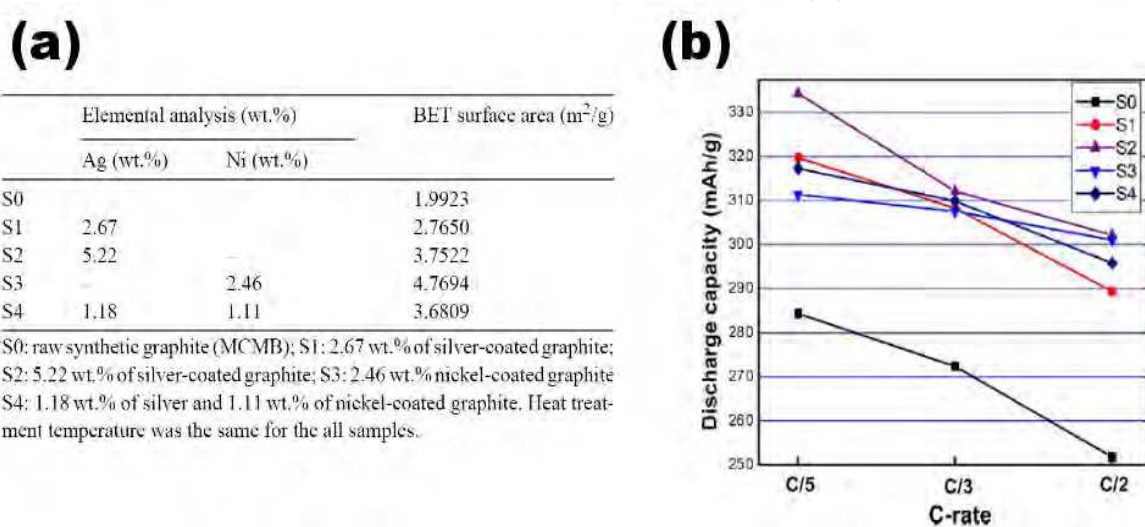


Fig. 12. Elemental analysis and BET surface area of metal-coated graphites (a) and effect of metal-coated graphites on maximum discharge capacity at various C-rates. 1M LiPF<sub>6</sub> in EC:EMC:DMC (1:1:1) (Choi et al., 2004)

## (2) Doping methods

Doping heteroatoms into metal oxide and/or graphite anodes is another effective way to increase electronic conductivity (Chen et al., 2001; Coustier et al., 1999; Endo et al., 1999; Huang et al., 2005; Li et al., 2009; Miyachi et al., 2007; Park et al., 2008; Qi et al., 2009; Santos-Pe et al., 2001; Wen et al., 2008; Zhao et al., 2008) of the LIB anode materials. This surface modification turned out effective particularly for improving the electronic conductivity of metal oxide materials, such as SnO<sub>2</sub> (Santos-Pe et al., 2001), SiO (Miyachi et al., 2007), Li<sub>4</sub>Ti<sub>5</sub>O<sub>12</sub> (Chen et al., 2001; Huang et al., 2005; Li et al., 2009; Park et al., 2008; Qi et al., 2009; Wen et al., 2008; Zhao et al., 2008), V<sub>2</sub>O<sub>5</sub> (Coustier et al., 1999), and etc, via increased charge carrier density and hopping probability of electrons. Indeed, N-doped Li<sub>4</sub>Ti<sub>5</sub>O<sub>12</sub>, which was prepared by heat treating Li<sub>4</sub>Ti<sub>5</sub>O<sub>12</sub> under NH<sub>3</sub> atmosphere to introduce conductive TiN thin film on the surface, exhibited much enhanced anode performance at high C/D rate as can be seen in Figure 13. (Park et al., 2008) In the various metal (Fe, Ti, Ni)-doped SiO anodes the doped metal formed effective electron conductive path on the active material, which helps fast reversible redox reaction between Si<sup>4+</sup> and Si at high C/D rates. (Miyachi et al., 2007)



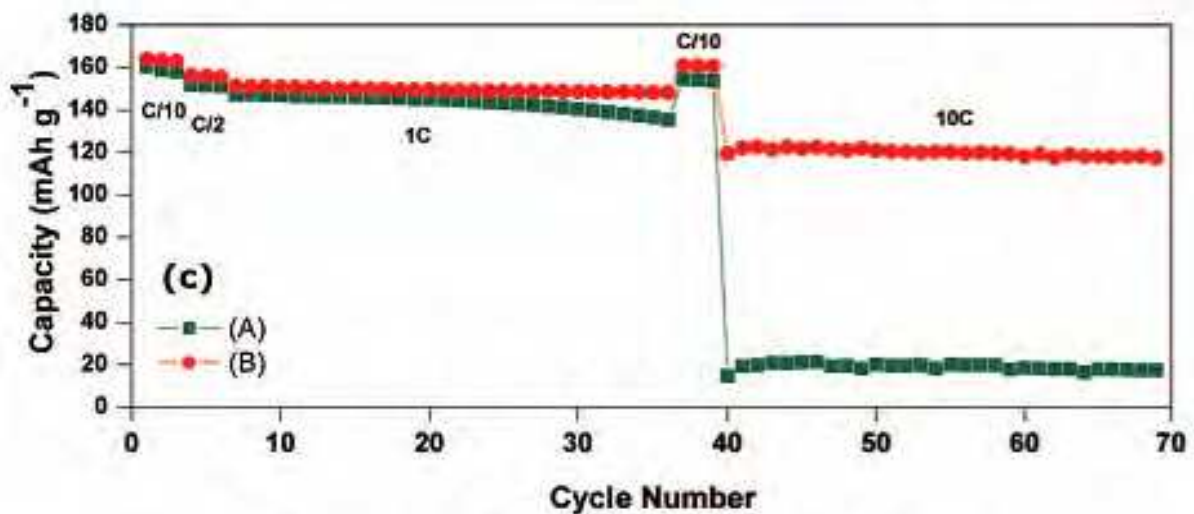


Fig. 13. Reversible capacities of (A) pristine and (B) 10 min-nitridated  $\text{Li}_4\text{Ti}_5\text{O}_{12}$  with different charge/discharge current densities during cycling. (Park et al., 2008)

#### 4.1.3 Synthesis of composite active material

The synthesis of composite anode materials has been most commonly adopted to overcome drawbacks of the current LIB anodes, for example, suppression of large volume expansion. (Tarascon & Armand, 2001) This approach was found also effective in enhancing the electron transportation rate. The approaches to synthesizing composites can be categorized into three groups: one is the carbon based composites (Chao et al., 2008; Cui et al., 2009; Gao et al., 2007; Hanai et al., 2005; Ji & Zhang, 2009; Lee et al., 2008; Lee et al., 2000; Lee et al., 2009; Li et al., 2009; Park et al., 2006; Park & Sohn, 2009; Park et al., 2007; Skowronski & Knofczynski, 2009; Veeraraghavan et al., 2002; Wang et al., 2008; Wang et al., 2008; Wen et al., 2008; Wen et al., 2003; Yao et al., 2008; Yin et al., 2005; Yoon et al., 2009; Yu et al., 2008; Zheng et al., 2008), another is the metallic composites (Ahn et al., 1999; Guo et al., 2007; Guo et al., 2009; Hanai et al., 2005; Hibino et al., 2004; Huang et al., 2008; Huang et al., 2005; Vaughey et al., 2003; Wang et al., 2008; Yan & et al., 2007; Yang et al., 2006; Yin et al., 2004; Zhang et al., 2009), and the other is the composites incorporated with conductive additives.

##### (1) Carbon based composites

The carbon based composites are of two types: the composite with carbon active material (Cui et al., 2009; Ji & Zhang, 2009; Lee et al., 2000; Park et al., 2006; Park & Sohn, 2009; Park et al., 2007; Skowronski & Knofczynski, 2009; Veeraraghavan et al., 2002; Wang et al., 2008; Wang et al., 2008; Yao et al., 2008) and the composite with carbon conductive material (Chao et al., 2008; Gao et al., 2007; Hanai et al., 2005; Hibino et al., 2004; Lee et al., 2008; Lee et al., 2009; Li et al., 2009; Wen et al., 2008; Wen et al., 2003; Yin et al., 2005; Yoon et al., 2009; Yu et al., 2008; Zheng et al., 2008). In the former case, other conductive materials are used to enhance the electron transportation. If such conductive materials are active with Li ions, like as Co (Wang et al., 2008), Sn (Lee et al., 2000; Park & Sohn, 2009; Veeraraghavan et al., 2002), Sb (Park & Sohn, 2009; Park et al., 2007) and  $\text{Fe}_3\text{O}_4$  (Cui et al., 2009; Wang et al., 2008), the conductive materials can also play a role as the active material with carbon. As an example of the composite with carbon active material, Wang et al. (2008) prepared a composite of carbon fiber/ $\text{Fe}_3\text{O}_4$  using electrospinning technique. Because  $\text{Fe}_3\text{O}_4$  has high theoretical

specific capacity of 924 mAh/g and high electronic conductivity, the composite exhibited the specific capacity of about 1000 mAh/g at 200 mA/g of C/D rate.

On the other hand, in the latter case, carbon materials are usually coated on and/or incorporated into the matrix of metallic or insulating or semiconducting active materials. For carbon-coated metal composites, carbon is used as a matrix or template to suppress the volume expansion of and maintain electron pathways in the anode. In this case, metal is the anodic active material, and at the same time, enhance the electron transportation of the carbon material. Indeed, SnSb/C composites synthesized by Park and Sohn (2009) using high energy mechanical milling show the reversible specific capacity of 500 mAh/g over at 2C rate due to enhanced electronic conductivity by SnSb nanocrystallines (see Figure 14)

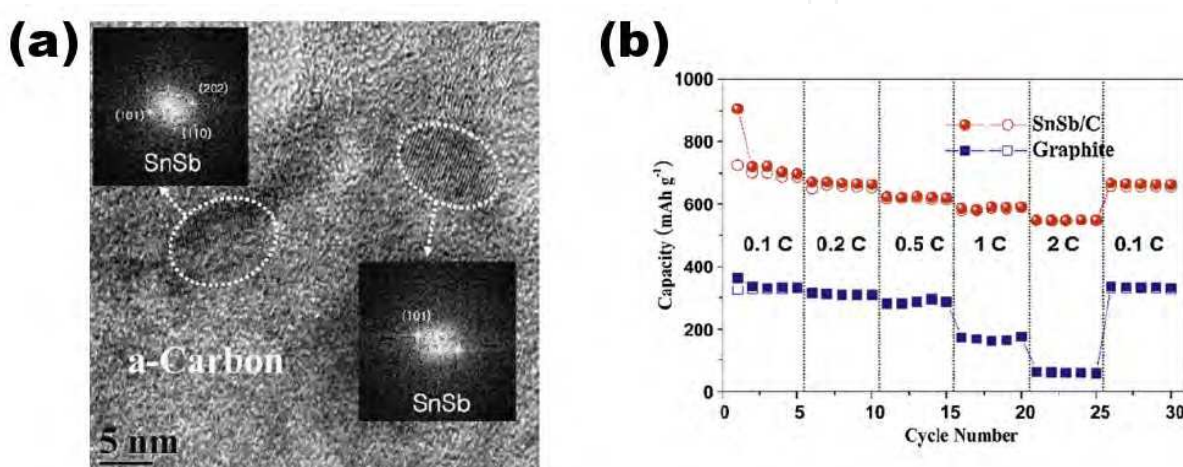


Fig. 14. TEM image with the corresponding lattice spacing of the SnSb/C nanocomposite (a) and the discharge and charge capacity vs. cycle number for the SnSb/C nanocomposite and graphite (MCMB) electrodes at various C rates (SnSb/C: 1C-700 mA/g, graphite: 1C-320 mA/g). (Park & Sohn, 2009)

The carbon-coated insulating materials that have high storage capacity of Li ions, for example, Si (Hanai et al., 2005; Wen et al., 2003), SiO (Chao et al., 2008), Li<sub>4</sub>Ti<sub>5</sub>O<sub>12</sub> (Yu et al., 2008), and etc. also show much enhanced anodic performance due to improved electronic conductivity by carbon component in the composite. Indeed, SiO/carbon cryogel (CC) composites showed the specific discharge capacity of 450 mAh/g over at 600 mA/g of C/D rate. This enhanced anodic performance at high C/D rate was attributed to high electronic conductivity and continuous porosity giving increased porosity and improved contact with electrolytes. (Hasegawa et al., 2004) On the other hand, the carbon-incorporated composite system whereby carbon additives, for example carbon nanotube (CNT) (Lee et al., 2008; Lee et al., 2009; Yin et al., 2005; Zheng et al., 2008), are incorporated into metal oxide system is another simple way to enhancing the electron transportation in the anode system. In this case, there are no additional treatments that may influence the anodic performance of the oxide materials, so this method can thus be applied to the thermally sensitive anode materials. Zheng et al. (2008) used CNTs to increase the high rate performance of CuO anode. As CNTs have high chemical stability, large surface area, strong mechanical strength, and high electronic conductivity, they integrated CNTs and CuO into nanomicrospheres to have enhanced performance at fast C/D rates as shown in Figure 15.

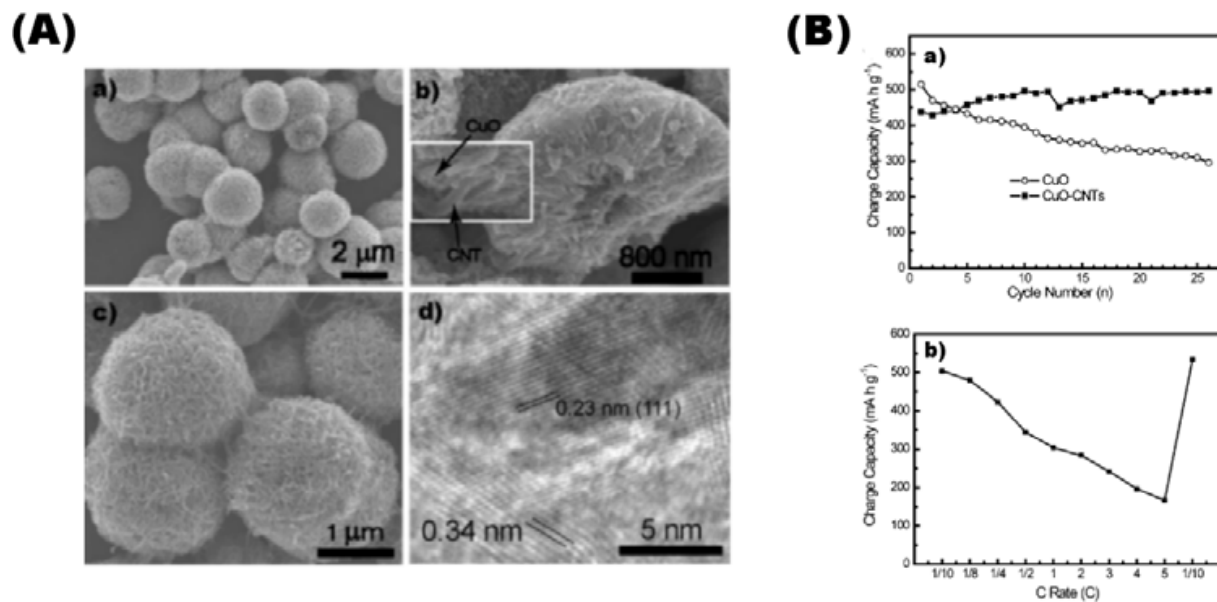
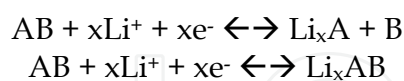


Fig. 15. (A) (a, c) SEM images of CuO-CNT nanomicrospheres and (b) crashed CuO-CNT nanomicrosphere, (d) HRTEM image of CuO-CNT nanomicrospheres. The inset in (b) shows the CuO crystals and the inserted CNTs. (B) (a) variation in charge capacity with cycle number for CuO and CuO-CNT nanomicrospheres at a rate of 0.1C. (b) C/D rate performance of CuO-CNT nanomicrospheres. (Zheng et al., 2008)

## (2) Metallic composites

There are various metals which can alloy with lithium and perform as anode material of LIBs: for example, Sb, Sn, P and Bi as they have very high specific capacity of Li ions, but very poor cycle performance due to large volume expansion. (Park & Sohn, 2009) As this huge volume change during C/D process in the anode material causes cracks and disintegration that cause poor electronic contact, (Kasavajjula et al., 2007; Ryu et al., 2004) the metallic composites have been studied to overcome such problems. The composites can be prepared through one of the following reactions:



With the composites synthesized via the first reaction, the component B that is not reactive with Li ions provides a buffer for the huge volume expansion of component A, caused by alloying with Li ions. (Tarascon et al., 2003; Wachtler et al., 2002) Also, the component B can enhance the charge transfer reaction on the surface of the active materials due to high electronic conductivity. In the case of the composites obtained from the second reaction, both A and B components can conduct as active materials. After a few cycles, this reaction results in the first reaction. (Gillot et al., 2005; Souza et al., 2002) Hence many researches utilized this reaction to enhance the high rate capability of the metallic composites as an anode of LIBs. (Guo et al., 2007; Guo et al., 2009; Hanai et al., 2005; Park & Sohn, 2009; Vaughey et al., 2003; Yan & et al., 2007; Yin et al., 2004) For instance, Guo et al. (2009) introduced nickel/tin composites via reduction reaction and calcinations, which demonstrated the enhanced anodic performance at high C/D rates (see Figure 16).

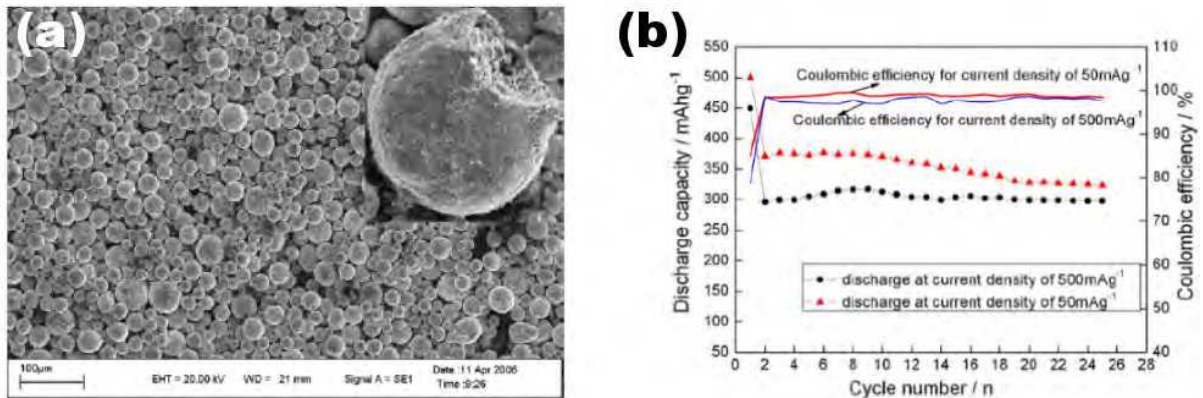


Fig. 16. SEM image of NiSn<sub>x</sub> alloy composites (a) and cycling performance of NiSn<sub>x</sub> alloy composites at different current densities (b). (Guo et al., 2009)

The metallic additives can also be used to increase the electronic conductivity of insulating or semiconducting metal oxide anodes. (Huang et al., 2008; Huang et al., 2005; Zhang et al., 2009) Through the incorporation of nanostructured metals into the anode matrix with low electronic conductive can effectively enhance the electron transportation due to the intrinsically high electronic conductivity of the additive metals. (Ahn et al., 1999; Yang et al., 2006)

#### 4.2. To achieve high ion transportation

As aforementioned, high and rapid ion transfer in the anode system can be achieved by introducing good ionic pathway to the active materials and increasing the ionic transfer rate on and in the active materials by achieving large surface area (  $A$  ), good ionic transfer property (  $m_i$  ), and short ionic pathway in the active material (  $d_i$  ) through morphology control and surface modification of the active materials.

##### 4.2.1 Morphology control of active materials

The main objectives of morphology control are to introduce continuous ionic pathways to the surface of the active materials by increasing accessible areas to electrolytes and decreasing the ionic diffusion path inside the active materials. Various nanostructured active materials have thus been studied, such as 0D-hollow spheres (Guo et al., 2009; Kim & Cho, 2008; Liu et al., 2009; Tang et al., 2009; Wang et al., 2007; Xiao et al., 2009; Zhou et al., 2009), 1D-tubular or rod-like structures (Adelhelm et al., 2009; Chan et al., 2008; Fang et al., 2009; Li et al., 2009; Park et al., 2007; Qiao et al., 2008; Subramanian et al., 2006; Wang et al., 2005; Wen et al., 2007), 2D-nanosheets (Graetz et al., 2004; Ohara et al., 2004; Tang et al., 2008), and 3D-porous structures (Guo et al., 2007; Hu et al., 2007; Liu et al., 2008; Long et al., 2004; Singhal et al., 2004; Yu et al., 2007; Zhang et al., 2009).

The 0D-hollow spheres have characteristics of large surface area, low density, and short diffusion path inside the active material. (Zhou et al., 2009) In contrast to filled 0D-nanosphere, the hollow spheres provide sufficient accessible areas to electrolytes even with the aggregated forms. Moreover the inner empty space plays a role as a buffer to the volume expansion of the active materials. For example, the vesicle-like hollow spheres of

$V_2O_5/SnO_2$ , prepared by Liu et al. (2009), exhibited the specific capacity of 673 mAh/g at 250 mA/g C/D rate even after 50<sup>th</sup> cycling (see Figure 17).

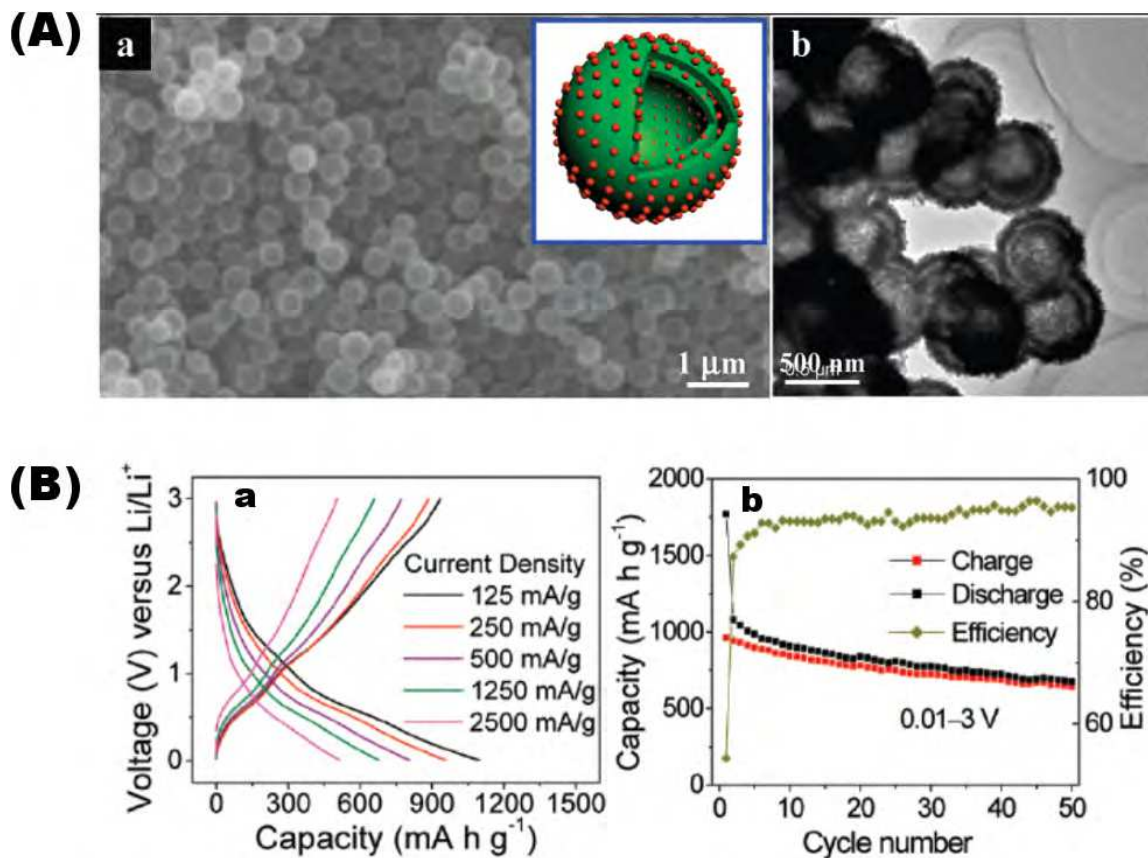


Fig. 17. SEM micrographs of  $V_2O_5-SnO_2$  vesicle-like nanocapsules (The inset is a schematic structure of the nanocapsule. The red spheres represent  $SnO_2$  nanocrystals, and the green double shells represent  $V_2O_5$  matrix) (A-a). Low-magnification TEM image of  $V_2O_5-SnO_2$  nanocapsules (A-b). Charge/discharge curves at different current densities (B-a). Capacity (left) and efficiency (right) versus cycle number at a current density of 250 mA/g (B-b). (Liu et al., 2009)

Tubular and/or rod-like 1D nanostructured materials are also effective in increasing accessible surface area and reducing the ion diffusion path. Especially, an array of 1D nanostructured anodes can be effectively introduced on a plate using AAO or anodizing method. (Xia et al., 2003) This structure is very effective to preventing aggregation of nanostructured materials and hence increasing the electrolyte-accessible surface areas. (Chan et al., 2008) In the case of tubular structure, vacancy plays the same role as in the hollow spheres. Indeed, an array of  $TiO_2$  directly grown on a plate by Fang et al. (2009) using anodic oxidation method exhibited the specific capacity of 140 and 170 mAh/g at 10 and 30 A/g of C/D rates, respectively, as shown in Figure 18.

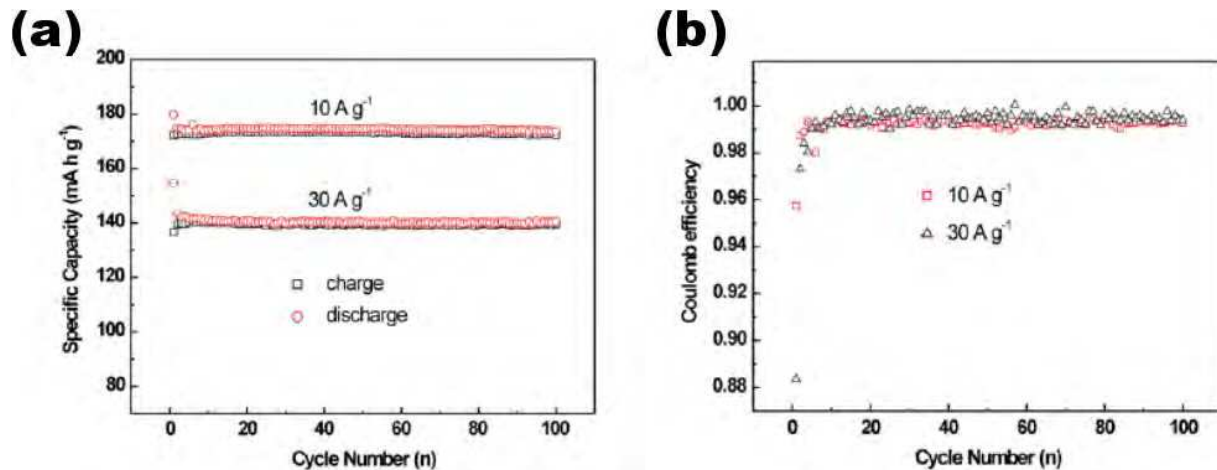


Fig. 18. Cycle performance (a) and Coulomb efficiency (b) of an array of 1D TiO<sub>2</sub> electrode at current densities of 10 and 30 A/g. (Fang et al., 2009)

The 2D nanostructured anodes, viz. of sheet or thin-film type, have drawn much attention with an expectation of increasing surface area. However, this type of structure exhibited poor anodic performance at high C/D rate. In some cases, 2D nanosheet structure was used as a platform to introduce 3D porous structure. (Tang et al., 2008) In the case of 3D porous structure, it is very important to introduce a continuous phase of porosity for effective ionic pathways to the surface of the active material. Most of 3D porous structures with continuous pore phase can be prepared via chemical reactions including sol-gel reaction, CVD, and electrodeposition, which are conducted under controlled conditions. When combined with template techniques such as porous membranes, colloidal crystals, micelles, and etc., these chemical reactions allow the formation of hierarchical network structure with size-controlled continuous pore phase. (Long et al., 2004) Yu et al. (2007) recently reported that Li<sub>2</sub>O-CuO-SnO<sub>2</sub> composites with porous spherical multideck-cage morphology show the specific capacity of 800 mAh/g over at 1C C/D rate (see Figure 19).

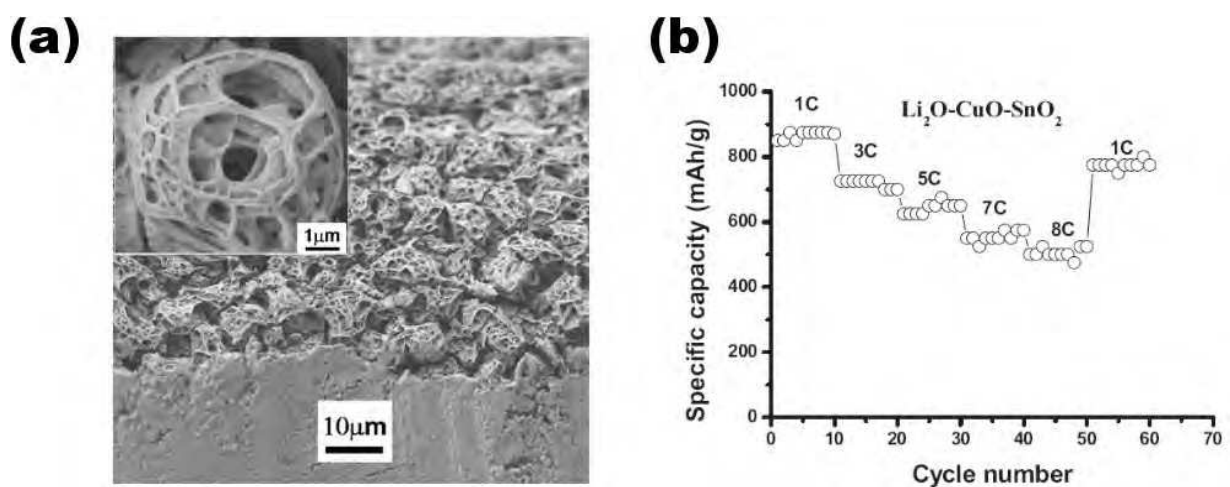


Fig. 19. SEM micrographs of as-deposited Li<sub>2</sub>O-CuO-SnO<sub>2</sub> (a) and cycle performance results at various C/D rates(b). (Hu et al., 2007)

#### 4.2.2 Surface modification of the active materials

Positive charge transfer property of the surface of the active material is another essential factor to enhance the ionic transportation. High rate positive charge, Li ions, transfer can be achieved by increasing mass transfer coefficient, which varies with the morphologies of the anode materials. To modify the surface of the active material, doping and/or encapsulation methods are widely adopted. For example, Mo doped  $\text{MnV}_2\text{O}_6$  ( $\text{Mn}_{1-x}\text{Mo}_{2x}\text{V}_{2(1-x)}\text{O}_6$  ( $x = 0, 0.4$ )) prepared by Hara et al. (2002) using conventional solid-state reaction showed the specific capacity of about 1000 mAh/g at 1C (350 mA/g) C/D rate, which is higher by 200 mAh/g over than the pristine  $\text{MnV}_2\text{O}_6$  sample (Figure 20). This improvement was possible because Mn vacancies introduced by Mo doping (Kozłowski et al., 1980) can enhance the Li ion diffusion on the surface of  $\text{MnV}_2\text{O}_6$ .

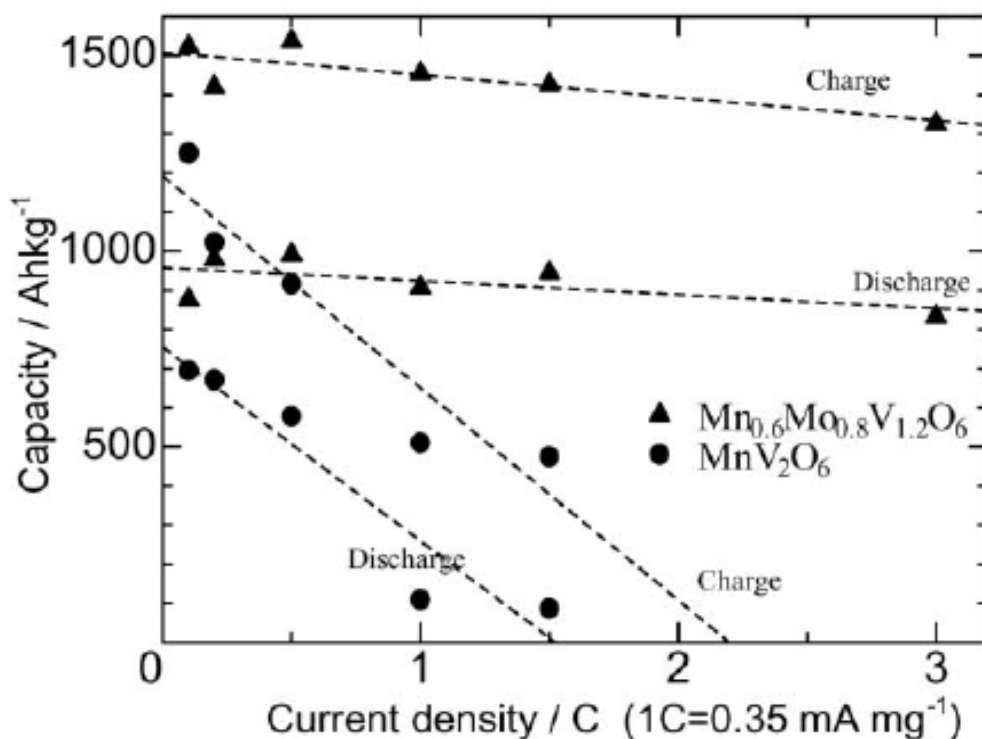


Fig. 20. Variation of charge-discharge capacity of  $\text{Mn}_{1-x}\text{Mo}_{2x}\text{V}_{2(1-x)}\text{O}_6$  ( $x = 0, 0.4$ ) with current density. (Hara et al., 2002)

Surface encapsulation can also increase the Li ion transfer rate on the surface of the active material. Recently, Kim et al. (2008) introduced cyanoethyl polyvinylalcohol (cPVA)-modified graphites as a fast rechargeable anode material. Generally, graphite is not appropriate active material for fast C/D rate batteries due to intercalation based C/D mechanism and SEI problem during C/D process. Accordingly, they tried to encapsulate the graphite with cPVA to generate an electrolyte-philic surface. These cPVA-encapsulated graphites showed much enhanced high rate capability due to high polar  $-\text{CN}$  groups in the cPVA, which give high ionic conductivity of around 7 mS/cm.

## 5. Design guidelines for next generation anode materials for EVs

The currently available carbon anodes have exhibited somewhat limited performance from a viewpoint of their application to EVs. As we discussed earlier, electron transportation can be enhanced by increasing the electronic mobility in the active material ( $u_e$ ) and securing continuous electron pathways. Also, ion transportation can be improved by fabricating active materials with high mass transfer coefficient ( $m_i$ ), large accessible surface area ( $A$ ), short diffusion length ( $d_i$ ), and continuous ion pathways. When considered all these parameters together, we may be able to imagine desirable microstructure of the high performance anode for EVs as shown in Figure 21 whereby three dimensionally developed porous microstructures of highly electron conductive materials.

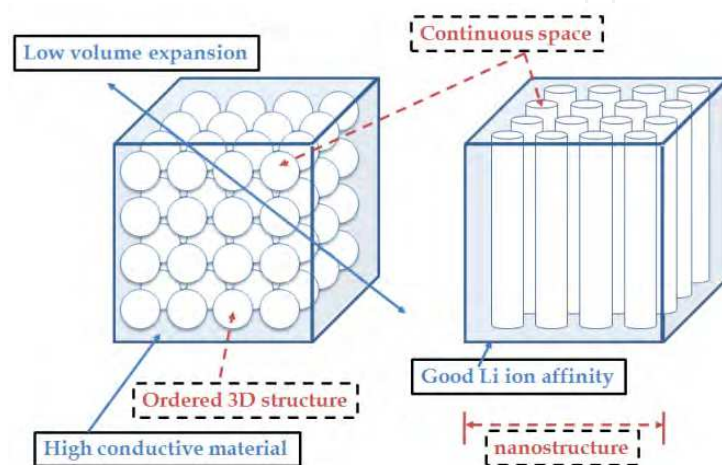


Fig. 21. Schematic of desirable microstructure of next generation high performance anodes for EVs.

In this sense, it is indeed interesting to note recently reported Si nanotubes, which have the ordered 3D porous nanostructure and exhibited the specific capacity of 2800 mAh/g at 1C rate upto 200<sup>th</sup> cycles due to extremely enhanced Li ion transportation kinetics. (Park et al., 2009) On the other hand, to enhance the affinity and hence transfer rate of Li ions to the surface of the active materials, it is necessary to suppress and/or minimize the formation of solid electrolyte interface (SEI) layer that has been known to deteriorate the cycle performance of carbon anodes (Wang et al., 2001). Indeed, the equation (10), which is the modified Butler-Volmer equation (5), tells that the resistance of SEI layer ( $R_{SEI}$ ) decreases the driving force of the overpotential ( $\eta$ ), leading to decrease of specific capacity in the active materials. One possible way to prevent and/or suppress the formation of SEI layers on the surface of the active materials is to find materials that exhibit Li/Li<sup>+</sup> redox potential window over 0.7 V, which is the formation potential of SEI layer. In recent,  $Li_4Ti_5O_{12}$  has been reported to have the Li/Li<sup>+</sup> redox potential at about 1.5 V (Yao et al., 2008) Also,  $Li_4Ti_5O_{12}$  has higher Li ion diffusion coefficient than carbon materials, which helps fast ion transportation. (Takai et al., 1999) However, there still remain many issues to be solved for this material, including increasing specific energy density considerably.

$$i = i_0 \left[ e^{\alpha_O f (\eta - i / R_{SEI})} - e^{-\alpha_R f (\eta - i / R_{SEI})} \right] \quad (10)$$



## 6. Conclusion

There have been numerous studies on the design and development of novel high performance LIB anodes, which would be applicable to several types of electrical vehicles, HEVs, PHEVs, or full EVs. Then, through a survey of those studies from the viewpoints of the C/D mechanism of Li ions, including currently available carbon based anode systems, we could find that maximizing both ion and electron transportations in the anode system should be most importantly considered in the design and development of novel anodes for HEVs, PHEVs or EVs.

Many different approaches were found to be possible to achieve such goals of the novel anodes, especially with high performance at high C/D rates. That is, both good electron transportation pathways and short ion diffusion pathways can be endowed with the morphology control by adopting various nanotechnologies. In addition, through morphology control, accessible surface areas to electrolytes can be much increased, which leads to much improved anodic performance at high C/D rates. On the other hand, the surface modification of the anode materials through various methods can also contribute to enhancing electron transfer rates on and inside the active materials and ion diffusion rates.

Although there are many novel anode materials that were reported to show high rate capability of LIBs, it still needs further and farther works on design and developing novel anode materials with much higher performance at high C/D rates. However, whatsoever they would be both ion and electron transportation rates should be concurrently maximized. Having been considered the current status of the developed anode materials, much more effort has to be expended to enhancing the ion transportation rate. (Fang et al., 2009; Hu et al., 2006) For the development of novel LIB anode materials with practical significance for EVs or HEVs, other important factors should also be considered, such as safety factors, cost, mass production possibility, and etc.

## 7. Acknowledgement

This work was supported by the Ministry of Education, Science and Technology, Korea through research institute of advanced materials (RIAM) and global research laboratory (GRL) program.

## 8. References

- Adelhelm, P.; Hu, Y. S.; Antonietti, M.; Maier, J. & Smarsly, B. M. (2009). Hollow Fe-containing carbon fibers with tubular tertiary structure: preparation and Li-storage properties. *Journal of Materials Chemistry*, Vol. 19, No. 11, February 2009, pp. 1616-1620, ISSN 0959-9428
- Ahn, S.; Kim, Y.; Kim, K. J.; Kim, T. H.; Lee, H. & Kim, M. H. (1999). Development of high capacity, high rate lithium ion batteries utilizing metal fiber conductive additives. *Journal of Power Sources*, Vol. 81-82, No. September 1999, pp. 896-901, ISSN 0378-7753
- Arico, A. S.; Bruce, P.; Scrosati, B.; Tarascon, J. M. & Van Schalkwijk, W. (2005). Nanostructured materials for advanced energy conversion and storage devices. *Nature Materials*, Vol. 4, No. 5, May 2005, pp. 366-377, ISSN 1476-1122

- Bard, A. J. & Faulkner, L. R. (2001). *Electrochemical Methods : Fundamentals and Applications*, John Wiley & Sons, Inc., ISBN 0-471-04372-9, Austin
- Besenhard, J. O.; Winter, M.; Yang, J. & Biberacher, W. (1995). Filming mechanism of lithium-carbon anodes in organic and inorganic electrolytes. *Journal of Power Sources*, Vol. 54, No. 2, April 1995, pp. 228-231, ISSN 0378-7753
- Brett, C. M. A. & Brett, A. M. O. (1993). *Electrochemistry : Principles, Methods, and Applications*, Oxford University Press, ISBN 0-19-855389-7, Oxford
- Chan, C. K.; Peng, H. L.; Liu, G.; McIlwrath, K.; Zhang, X. F.; Huggins, R. A. & Cui, Y. (2008). High-performance lithium battery anodes using silicon nanowires. *Nature Nanotechnology*, Vol. 3, No. 1, January 2008, pp. 31-35, ISSN 1748-3387
- Chao, Y.-J.; Yuan, X. & Ma, Z.-F. (2008). Preparation and characterization of carbon cryogel (CC) and CC-SiO composite as anode material for lithium-ion battery. *Electrochimica Acta*, Vol. 53, No. 9, March 2008, pp. 3468-3473, ISSN 0013-4686
- Chen, C. H.; Vaughey, J. T.; Jansen, A. N.; Dees, D. W.; Kahaian, A. J.; Goacher, T. & Thackeray, M. M. (2001). Studies of Mg-Substituted  $\text{Li}_{4-x}\text{Mg}_x\text{Ti}_5\text{O}_{12}$  Spinel Electrodes ( $0 \leq x \leq 1$ ) for Lithium Batteries. *Journal of the Electrochemical Society*, Vol. 148, No. 1, January 2001, pp. A102-A104, ISSN 0013-4651
- Cho, H. G.; Kim, Y. J.; Sung, Y. E. & Park, C. R. (2007). The enhanced anodic performance of highly crimped and crystalline nanofibrillar carbon in lithium-ion batteries. *Electrochimica Acta*, Vol. 53, No. 2, December 2007, pp. 944-950, ISSN 0013-4686
- Choi, W. C.; Byun, D.; Lee, J. K. & Cho, B. w. (2004). Electrochemical characteristics of silver- and nickel-coated synthetic graphite prepared by a gas suspension spray coating method for the anode of lithium secondary batteries. *Electrochimica Acta*, Vol. 50, No. 2-3, November 2004, pp. 523-529, ISSN 0013-4686
- Coustier, F.; Jarero, G.; Passerini, S. & Smyrl, W. H. (1999). Performance of copper-doped  $\text{V}_2\text{O}_5$  xerogel in coin cell assembly. *Journal of Power Sources*, Vol. 83, No. 1-2, October 1999, pp. 9-14, ISSN 0378-7753
- Cui, G.; Hu, Y.-S.; Zhi, L.; Wu, D.; Lieberwirth, I.; Maier, J. & M?len, K. (2007). A One-Step Approach Towards Carbon-Encapsulated Hollow Tin Nanoparticles and Their Application in Lithium Batteries. *Small*, Vol. 3, No. 12, November 2007, pp. 2066-2069, ISSN 1613-6829
- Cui, Z.-M.; Jiang, L.-Y.; Song, W.-G. & Guo, Y.-G. (2009). High-Yield Gas-Liquid Interfacial Synthesis of Highly Dispersed  $\text{Fe}_3\text{O}_4$  Nanocrystals and Their Application in Lithium-Ion Batteries. *Chemistry of Materials*, Vol. 21, No. 6, February 2009, pp. 1162-1166, ISSN 0897-4756
- Derrien, G.; Hassoun, J.; Panero, S. & Scrosati, B. (2007). Nanostructured Sn-C Composite as an Advanced Anode Material in High-Performance Lithium-Ion Batteries. *Advanced Materials*, Vol. 19, No. 17, August 2007, pp. 2336-2340, ISSN 1521-4095
- Dominko, R.; Gaberscek, M.; Bele, A.; Mihailovic, D. & Jamnik, J. (2007). Carbon nanocoatings on active materials for Li-ion batteries. *Journal of the European Ceramic Society*, Vol. 27, No. 2-3, 2007, pp. 909-913, ISSN 0955-2219
- Dominko, R.; Gaberscek, M.; Drofenik, J.; Bele, M. & Pejovnik, S. (2001). A Novel Coating Technology for Preparation of Cathodes in Li-Ion Batteries. *Electrochemical and Solid-State Letters*, Vol. 4, No. 11, November 2001, pp. A187-A190, ISSN 1099-0062

- Endo, M.; Kim, C.; Karaki, T.; Nishimura, Y.; Matthews, M. J.; Brown, S. D. M. & Dresselhaus, M. S. (1999). Anode performance of a Li ion battery based on graphitized and B-doped milled mesophase pitch-based carbon fibers. *Carbon*, Vol. 37, No. 4, June 1999, pp. 561-568, ISSN 0008-6223
- Endo, M.; Kim, C.; Nishimura, K.; Fujino, T. & Miyashita, K. (2000). Recent development of carbon materials for Li ion batteries. *Carbon*, Vol. 38, No. 2, 2000, pp. 183-197, ISSN 0008-6223
- Fang, H. T.; Liu, M.; Wang, D. W.; Sun, T.; Guan, D. S.; Li, F.; Zhou, J. G.; Sham, T. K. & Cheng, H. M. (2009). Comparison of the rate capability of nanostructured amorphous and anatase TiO<sub>2</sub> for lithium insertion using anodic TiO<sub>2</sub> nanotube arrays. *Nanotechnology*, Vol. 20, No. 22, June 2009, pp. -, ISSN 0957-4484
- Fu, L. J.; Liu, H.; Li, C.; Wu, Y. P.; Rahm, E.; Holze, R. & Wu, H. Q. (2006). Surface modifications of electrode materials for lithium ion batteries. *Solid State Sciences*, Vol. 8, No. 2, February 2006, pp. 113-128, ISSN 1293-2558
- Gao, J.; Ying, J.; Jiang, C. & Wan, C. (2007). High-density spherical Li<sub>4</sub>Ti<sub>5</sub>O<sub>12</sub>/C anode material with good rate capability for lithium ion batteries. *Journal of Power Sources*, Vol. 166, No. 1, March 2007, pp. 255-259, ISSN 0378-7753
- Gillot, F.; Boyanov, S.; Dupont, L.; Doublet, M. L.; Morcrette, A.; Monconduit, L. & Tarascon, J. M. (2005). Electrochemical reactivity and design of NiP<sub>2</sub> negative electrodes for secondary Li-ion batteries. *Chemistry of Materials*, Vol. 17, No. 25, December 2005, pp. 6327-6337, ISSN 0897-4756
- Graetz, J.; Ahn, C. C.; Yazami, R. & Fultz, B. (2004). Nanocrystalline and Thin Film Germanium Electrodes with High Lithium Capacity and High Rate Capabilities. *Journal of the Electrochemical Society*, Vol. 151, No. 5, March 2004, pp. A698-A702, ISSN 0013-4651
- Guo, H.; Zhao, H.; Jia, X.; Li, X. & Qiu, W. (2007). A novel micro-spherical CoSn<sub>2</sub>/Sn alloy composite as high capacity anode materials for Li-ion rechargeable batteries. *Electrochimica Acta*, Vol. 52, No. 14, April 2007, pp. 4853-4857, ISSN 0013-4686
- Guo, H.; Zhao, S.; Zhao, H. & Chen, Y. (2009). Synthesis and electrochemical performance of novel loose structured submicro/micro-sized NiSn<sub>x</sub> alloy composites for lithium batteries. *Electrochimica Acta*, Vol. 54, No. 16, June 2009, pp. 4040-4044, ISSN 0013-4686
- Guo, K.; Pan, Q.; Wang, L. & Fang, S. (2002). Nano-scale copper-coated graphite as anode material for lithium-ion batteries. *Journal of Applied Electrochemistry*, Vol. 32, No. 6, June 2002, pp. 679-685, ISSN 0021-891X
- Guo, Y.-G.; Hu, Y.-S.; Sigle, W. & Maier, J. (2007). Superior Electrode Performance of Nanostructured Mesoporous TiO<sub>2</sub> (Anatase) through Efficient Hierarchical Mixed Conducting Networks. *Advanced Materials*, Vol. 19, No. 16, July 2007, pp. 2087-2091, ISSN 1521-4095
- Guo, Z. P.; Du, G. D.; Nuli, Y.; Hassan, M. F. & Liu, H. K. (2009). Ultra-fine porous SnO<sub>2</sub> nanopowder prepared via a molten salt process: a highly efficient anode material for lithium-ion batteries. *Journal of Materials Chemistry*, Vol. 19, No. 20, March 2009, pp. 3253-3257, ISSN 0959-9428
- Hanai, K.; Liu, Y.; Imanishi, N.; Hirano, A.; Matsumura, M.; Ichikawa, T. & Takeda, Y. (2005). Electrochemical studies of the Si-based composites with large capacity and good cycling stability as anode materials for rechargeable lithium ion batteries. *Journal of Power Sources*, Vol. 146, No. 1-2, August 2005, pp. 156-160, ISSN 0378-7753

- Hara, D.; Ikuta, H.; Uchimoto, Y. & Wakihara, M. (2002). Electrochemical properties of manganese vanadium molybdenum oxide as the anode for Li secondary batteries. *Journal of Materials Chemistry*, Vol. 12, No. 8, August 2002, pp. 2507-2512, ISSN 0959-9428
- Hasegawa, T.; Mukai, S. R.; Shirato, Y. & Tamon, H. (2004). Preparation of carbon gel microspheres containing silicon powder for lithium ion battery anodes. *Carbon*, Vol. 42, No. 12-13, July 2004, pp. 2573-2579, ISSN 0008-6223
- Hibino, M.; Abe, K.; Mochizuki, M. & Miyayama, M. (2004). Amorphous titanium oxide electrode for high-rate discharge and charge. *Journal of Power Sources*, Vol. 126, No. 1-2, February 2004, pp. 139-143, ISSN 0378-7753
- Howell, D. (2008). "Progress Report for Energy Storage Research and Development." from [http://www1.eere.energy.gov/vehiclesandfuels/pdfs/program/2008\\_energy\\_storage.pdf](http://www1.eere.energy.gov/vehiclesandfuels/pdfs/program/2008_energy_storage.pdf).
- Hu, Y.-S.; Adelhelm, P.; Smarsly, B. M.; Hore, S.; Antonietti, M. & Maier, J. (2007). Synthesis of Hierarchically Porous Carbon Monoliths with Highly Ordered Microstructure and Their Application in Rechargeable Lithium Batteries with High-Rate Capability. *Advanced Functional Materials*, Vol. 17, No. 12, July 2007, pp. 1873-1878, ISSN 1616-3028
- Hu, Y.-S.; Kienle, L.; Guo, Y.-G. & Maier, J. (2006). High Lithium Electroactivity of Nanometer-Sized Rutile TiO<sub>2</sub>. *Advanced Materials*, Vol. 18, No. 11, April 2006, pp. 1421-1426, ISSN 1521-4095
- Huang, S.; Wen, Z.; Gu, Z. & Zhu, X. (2005). Preparation and cycling performance of Al<sup>3+</sup> and F<sup>-</sup> co-substituted compounds Li<sub>4</sub>Al<sub>x</sub>Ti<sub>5-x</sub>F<sub>y</sub>O<sub>12-y</sub>. *Electrochimica Acta*, Vol. 50, No. 20, July 2005, pp. 4057-4062, ISSN 0013-4686
- Huang, S.; Wen, Z.; Lin, B.; Han, J. & Xu, X. (2008). The high-rate performance of the newly designed Li<sub>4</sub>Ti<sub>5</sub>O<sub>12</sub>/Cu composite anode for lithium ion batteries. *Journal of Alloys and Compounds*, Vol. 457, No. 1-2, June 2008, pp. 400-403, ISSN 0925-8388
- Huang, S.; Wen, Z.; Zhu, X. & Yang, X. (2005). Research on Li<sub>4</sub>Ti<sub>5</sub>O<sub>12</sub>/Cu<sub>x</sub>O Composite Anode Materials for Lithium-Ion Batteries. *Journal of the Electrochemical Society*, Vol. 152, No. 7, May 2005, pp. A1301-A1305, ISSN 0013-4651
- Ji, L. & Zhang, X. (2009). Manganese oxide nanoparticle-loaded porous carbon nanofibers as anode materials for high-performance lithium-ion batteries. *Electrochemistry Communications*, Vol. 11, No. 4, April 2009, pp. 795-798, ISSN 1388-2481
- Ji, Y. & Jiang, Y. (2006). Increasing the electrical conductivity of poly(vinylidene fluoride) by KrF excimer laser irradiation. *Applied Physics Letters*, Vol. 89, No. 22, 2006, pp. 221103-221103, ISSN 0003-6951
- Julien, C. & Stoyanov, Z. (1999). *Materials for Lithium-Ion Batteries*, Kluwer Academic Publishers, ISBN 0-7923-6650-6, Dordrecht
- Kasavajjula, U.; Wang, C. S. & Appleby, A. J. (2007). Nano- and bulk-silicon-based insertion anodes for lithium-ion secondary cells. *Journal of Power Sources*, Vol. 163, No. 2, January 2007, pp. 1003-1039, ISSN 0378-7753
- Kim, C.; Yang, K. S.; Kojima, M.; Yoshida, K.; Kim, Y. J.; Kim, Y. A. & Endo, M. (2006). Fabrication of electrospinning-derived carbon nanofiber webs for the anode material of lithium-ion secondary batteries. *Advanced Functional Materials*, Vol. 16, No. 18, December 2006, pp. 2393-2397, ISSN 1616-301X

- Kim, H. & Cho, J. (2008). Template Synthesis of Hollow Sb Nanoparticles as a High-Performance Lithium Battery Anode Material. *Chemistry of Materials*, Vol. 20, No. 5, February 2008, pp. 1679-1681, ISSN 0897-4756
- Kim, H. S.; Chung, K. Y. & Cho, B. W. (2009). Electrochemical properties of carbon-coated Si/B composite anode for lithium ion batteries. *Journal of Power Sources*, Vol. 189, No. 1, April 2009, pp. 108-113, ISSN 0378-7753
- Kim, H. S.; Chung, Y. H.; Kang, S. H. & Sung, Y.-E. (2009). Electrochemical behavior of carbon-coated SnS<sub>2</sub> for use as the anode in lithium-ion batteries. *Electrochimica Acta*, Vol. 54, No. 13, May 2009, pp. 3606-3610, ISSN 0013-4686
- Kim, S. S.; Kadoma, Y.; Ikuta, H.; Uchimoto, Y. & Wakihara, M. (2001). Electrochemical performance of natural graphite by surface modification using aluminum. *Electrochemical and Solid State Letters*, Vol. 4, No. 8, August 2001, pp. A109-A112, ISSN 1099-0062
- Kottegoda, I. R. M.; Kadoma, Y.; Ikuta, H.; Uchimoto, Y. & Wakihara, M. (2002). Enhancement of Rate Capability in Graphite Anode by Surface Modification with Zirconia. *Electrochemical and Solid-State Letters*, Vol. 5, No. 12, December 2002, pp. A275-A278, ISSN 1099-0062
- Kozłowski, R.; Ziółkowski, J.; Mocala, K. & Haber, J. (1980). Defect structures in the brannerite-type vanadates. I. Preparation and study of MN<sub>1-x</sub>V<sub>2-2x</sub>Mo<sub>2x</sub>O<sub>6</sub> (0 ≤ x ≤ 0.45). *Journal of Solid State Chemistry*, Vol. 35, No. 1, November 1980, pp. 1-9, ISSN 0022-4596
- Lampe-Onnerud, C.; Shi, J.; Onnerud, P.; Chamberlain, R. & Barnett, B. (2001). Benchmark study on high performing carbon anode materials. *Journal of Power Sources*, Vol. 97-98, No. July 2001, pp. 133-136, ISSN 0378-7753
- Lee, J.-H.; Kim, G.-S.; Choi, Y.-M.; Park, W. I.; Rogers, J. A. & Paik, U. (2008). Comparison of multiwalled carbon nanotubes and carbon black as percolative paths in aqueous-based natural graphite negative electrodes with high-rate capability for lithium-ion batteries. *Journal of Power Sources*, Vol. 184, No. 1, September 2008, pp. 308-311, ISSN 0378-7753
- Lee, J. Y.; Zhang, R. & Liu, Z. (2000). Dispersion of Sn and SnO on carbon anodes. *Journal of Power Sources*, Vol. 90, No. 1, September 2000, pp. 70-75, ISSN 0378-7753
- Lee, S.-Y.; Park, J.; Park, P.; Kim, J.; Ahn, S.; Lee, K.-J.; Lee, H.-D.; Park, J.-S.; Kim, D.-H. & Jeong, Y. (2009). Effect of MWCNT on the performances of the rounded shape natural graphite as anode material for lithium-ion batteries. *Journal of Solid State Electrochemistry*, Vol. No. July 2009, pp. ISSN 1433-0768
- Li, C.; Yin, X.; Chen, L.; Li, Q. & Wang, T. (2009). Porous Carbon Nanofibers Derived from Conducting Polymer: Synthesis and Application in Lithium-Ion Batteries with High-Rate Capability. *The Journal of Physical Chemistry C*, Vol. 113, No. 30, July 2009, pp. 13438-13442, ISSN 1932-7447
- Li, M. Q.; Qu, M. Z.; He, X. Y. & Yu, Z. L. (2009). Effects of electrolytes on the electrochemical performance of Si/graphite/disordered carbon composite anode for lithium-ion batteries. *Electrochimica Acta*, Vol. 54, No. 19, July 2009, pp. 4506-4513, ISSN 0013-4686
- Li, X.; Qu, M. & Yu, Z. (2009). Structural and electrochemical performances of Li<sub>4</sub>Ti<sub>5-x</sub>Zr<sub>x</sub>O<sub>12</sub> as anode material for lithium-ion batteries. *Journal of Alloys and Compounds*, Vol. In Press, Corrected Proof, No. August 2009, pp. ISSN 0925-8388

- Liu, J.; Li, Y.; Huang, X.; Li, G. & Li, Z. (2008). Layered Double Hydroxide Nano- and Microstructures Grown Directly on Metal Substrates and Their Calcined Products for Application as Li-Ion Battery Electrodes. *Advanced Functional Materials*, Vol. 18, No. 9, April 2008, pp. 1448-1458, ISSN 1616-3028
- Liu, J.; Xia, H.; Xue, D. & Lu, L. (2009). Double-Shelled Nanocapsules of V<sub>2</sub>O<sub>5</sub>-Based Composites as High-Performance Anode and Cathode Materials for Li Ion Batteries. *Journal of the American Chemical Society*, Vol. 131, No. 34, August 2009, pp. 12086-12087, ISSN 0002-7863
- Long, J. W.; Dunn, B.; Rolison, D. R. & White, H. S. (2004). Three-Dimensional Battery Architectures. *Chemical Reviews*, Vol. 104, No. 10, August 2004, pp. 4463-4492, ISSN 0009-2665
- Lou, X. W.; Li, C. M. & Archer, L. A. (2009). Designed Synthesis of Coaxial SnO<sub>2</sub>@carbon Hollow Nanospheres for Highly Reversible Lithium Storage. *Advanced Materials*, Vol. 21, No. 24, March 2009, pp. 2536-2539, ISSN 1521-4095
- Makovicka, J.; Sedlarikova, M.; Arenillas, A.; Velicka, J. & Vondrak, J. (2009). Expanded graphite as an intercalation anode material for lithium systems. *Journal of Solid State Electrochemistry*, Vol. 13, No. 9, Sep 2009, pp. 1467-1471, ISSN 1432-8488
- Miyachi, M.; Yamamoto, H. & Kawai, H. (2007). Electrochemical Properties and Chemical Structures of Metal-Doped SiO Anodes for Li-Ion Rechargeable Batteries. *Journal of the Electrochemical Society*, Vol. 154, No. 4, February 2007, pp. A376-A380, ISSN 0013-4651
- Nobili, F.; Dsoke, S.; Mancini, M.; Tossici, R. & Marassi, R. (2008). Electrochemical investigation of polarization phenomena and intercalation kinetics of oxidized graphite electrodes coated with evaporated metal layers. *Journal of Power Sources*, Vol. 180, No. 2, June 2008, pp. 845-851, ISSN 0378-7753
- Nuli, Y. N.; Zhang, P.; Guo, Z. P.; Liu, H. K.; Yang, J. & Wang, J. L. (2009). Nickel-cobalt oxides/carbon nanoflakes as anode materials for lithium-ion batteries. *Materials Research Bulletin*, Vol. 44, No. 1, January 2009, pp. 140-145, ISSN 0025-5408
- Ohara, S.; Suzuki, J.; Sekine, K. & Takamura, T. (2004). A thin film silicon anode for Li-ion batteries having a very large specific capacity and long cycle life. *Journal of Power Sources*, Vol. 136, No. 2, October 2004, pp. 303-306, ISSN 0378-7753
- Park, C.-M.; Kim, Y.-U.; Kim, H. & Sohn, H.-J. (2006). Enhancement of the rate capability and cyclability of an Mg-C composite electrode for Li secondary batteries. *Journal of Power Sources*, Vol. 158, No. 2, August 2006, pp. 1451-1455, ISSN 0378-7753
- Park, C.-M. & Sohn, H.-J. (2009). A mechano- and electrochemically controlled SnSb/C nanocomposite for rechargeable Li-ion batteries. *Electrochimica Acta*, Vol. 54, No. 26, November 2009, pp. 6367-6373, ISSN 0013-4686
- Park, C.-M.; Yoon, S.; Lee, S.-I.; Kim, J.-H.; Jung, J.-H. & Sohn, H.-J. (2007). High-Rate Capability and Enhanced Cyclability of Antimony-Based Composites for Lithium Rechargeable Batteries. *Journal of the Electrochemical Society*, Vol. 154, No. 10, July 2007, pp. A917-A920, ISSN 0013-4651
- Park, K. S.; Benayad, A.; Kang, D. J. & Doo, S. G. (2008). Nitridation-Driven Conductive Li<sub>4</sub>Ti<sub>5</sub>O<sub>12</sub> for Lithium Ion Batteries. *Journal of the American Chemical Society*, Vol. 130, No. 45, November 2008, pp. 14930-+, ISSN 0002-7863

- Park, M.-S.; Wang, G.-X.; Kang, Y.-M.; Wexler, D.; Dou, S.-X. & Liu, H.-K. (2007). Preparation and Electrochemical Properties of SnO<sub>2</sub> Nanowires for Application in Lithium-Ion Batteries. *Angewandte Chemie International Edition*, Vol. 46, No. 5, December 2007, pp. 750-753, ISSN 1521-3773
- Park, M. H.; Kim, M. G.; Joo, J.; Kim, K.; Kim, J.; Ahn, S.; Cui, Y. & Cho, J. (2009). Silicon Nanotube Battery Anodes. *Nano Letters*, Vol. 9, No. 11, November 2009, pp. 3844-3847, ISSN 1530-6984
- Porter, D. A. & Easterling, K. E. (1991). *Phase Transformations in Metals and Alloys*, Chapman & Hall, ISBN 0-7487-5741-4, London
- Qi, Y.; Huang, Y.; Jia, D.; Bao, S.-J. & Guo, Z. P. (2009). Preparation and characterization of novel spinel Li<sub>4</sub>Ti<sub>5</sub>O<sub>12-x</sub>Br<sub>x</sub> anode materials. *Electrochimica Acta*, Vol. 54, No. 21, August 2009, pp. 4772-4776, ISSN 0013-4686
- Qiao, H.; Wang, Y.; Xiao, L. & Zhang, L. (2008). High lithium electroactivity of hierarchical porous rutile TiO<sub>2</sub> nanorod microspheres. *Electrochemistry Communications*, Vol. 10, No. 9, September 2008, pp. 1280-1283, ISSN 1388-2481
- Ryu, J. H.; Kim, J. W.; Sung, Y. E. & Oh, S. M. (2004). Failure modes of silicon powder negative electrode in lithium secondary batteries. *Electrochemical and Solid State Letters*, Vol. 7, No. 10, September 2004, pp. A306-A309, ISSN 1099-0062
- Santos-Pe, J.; Brousse, T.; S?chez, L.; Morales, J. & Schleich, D. M. (2001). Antimony doping effect on the electrochemical behavior of SnO<sub>2</sub> thin film electrodes. *Journal of Power Sources*, Vol. 97-98, No. July 2001, pp. 232-234, ISSN 0378-7753
- Sharma, N.; Shaju, K. M.; Subba Rao, G. V.; Chowdari, B. V. R.; Dong, Z. L. & White, T. J. (2003). Carbon-Coated Nanophase CaMoO<sub>4</sub> as Anode Material for Li Ion Batteries. *Chemistry of Materials*, Vol. 16, No. 3, December 2003, pp. 504-512, ISSN 0897-4756
- Singhal, A.; Skandan, G.; Amatucci, G.; Badway, F.; Ye, N.; Manthiram, A.; Ye, H. & Xu, J. J. (2004). Nanostructured electrodes for next generation rechargeable electrochemical devices. *Journal of Power Sources*, Vol. 129, No. 1, April 2004, pp. 38-44, ISSN 0378-7753
- Skowronski, J. M. & Knofczynski, K. (2009). Catalytically graphitized glass-like carbon examined as anode for lithium-ion cell performing at high charge/discharge rates. *Journal of Power Sources*, Vol. 194, No. 1, October 2009, pp. 81-87, ISSN 0378-7753
- Souza, D. C. S.; Pralong, V.; Jacobson, A. J. & Nazar, L. F. (2002). A reversible solid-state crystalline transformation in a metal phosphide induced by redox chemistry. *Science*, Vol. 296, No. 5575, June 2002, pp. 2012-2015, ISSN 0036-8075
- Subramanian, V.; Zhu, H. & Wei, B. (2006). High Rate Reversibility Anode Materials of Lithium Batteries from Vapor-Grown Carbon Nanofibers. *The Journal of Physical Chemistry B*, Vol. 110, No. 14, March 2006, pp. 7178-7183, ISSN 1520-6106
- Takai, S.; Kamata, M.; Fujine, S.; Yoneda, K.; Kanda, K. & Esaka, T. (1999). Diffusion coefficient measurement of lithium ion in sintered Li<sub>1.33</sub>Ti<sub>1.67</sub>O<sub>4</sub> by means of neutron radiography. *Solid State Ionics*, Vol. 123, No. 1-4, August 1999, pp. 165-172, ISSN 0167-2738
- Takamura, T.; Sumiya, K.; Suzuki, J.; Yamada, C. & Sekine, K. (1999). Enhancement of Li doping/undoping reaction rate of carbonaceous materials by coating with an evaporated metal film. *Journal of Power Sources*, Vol. 81-82, No. September 1999, pp. 368-372, ISSN 0378-7753

- Tang, Y.; Yang, L.; Fang, S. & Qiu, Z. (2009).  $\text{Li}_4\text{Ti}_5\text{O}_{12}$  hollow microspheres assembled by nanosheets as an anode material for high-rate lithium ion batteries. *Electrochimica Acta*, Vol. 54, No. 26, November 2009, pp. 6244-6249, ISSN 0013-4686
- Tang, Y. F.; Yang, L.; Qiu, Z. & Huang, J. S. (2008). Preparation and electrochemical lithium storage of flower-like spinel  $\text{Li}_4\text{Ti}_5\text{O}_{12}$  consisting of nanosheets. *Electrochemistry Communications*, Vol. 10, No. 10, October 2008, pp. 1513-1516, ISSN 1388-2481
- Tao, Z.; Liang, J. & Chen, J. (2007). Template-Directed Materials for Rechargeable Lithium-Ion Batteries. *Chemistry of Materials*, Vol. 20, No. 3, December 2007, pp. 667-681, ISSN 0897-4756
- Tarascon, J. M. & Armand, M. (2001). Issues and challenges facing rechargeable lithium batteries. *Nature*, Vol. 414, No. 6861, November 2001, pp. 359-367, ISSN 0028-0836
- Tarascon, J. M.; Morcrette, M.; Dupont, L.; Chabre, Y.; Payen, C.; Larcher, D. & Pralong, V. (2003). On the Electrochemical Reactivity Mechanism of  $\text{CoSb}_3$  vs. Lithium. *Journal of the Electrochemical Society*, Vol. 150, No. 6, June 2003, pp. A732-A741, ISSN 0013-4651
- Vaughey, J. T.; Fransson, L.; Swinger, H. A.; Edstrom, K. & Thackeray, M. M. (2003). Alternative anode materials for lithium-ion batteries: a study of  $\text{Ag}_3\text{Sb}$ . *Journal of Power Sources*, Vol. 119, No. June 2003, pp. 64-68, ISSN 0378-7753
- Veeraraghavan, B.; Durairajan, A.; Haran, B.; Popov, B. & Guidotti, R. (2002). Study of Sn-Coated Graphite as Anode Material for Secondary Lithium-Ion Batteries. *Journal of the Electrochemical Society*, Vol. 149, No. 6, April 2002, pp. A675-A681, ISSN 0013-4651
- Veeraraghavan, B.; Paul, J.; Haran, B. & Popov, B. (2002). Study of polypyrrole graphite composite as anode material for secondary lithium-ion batteries. *Journal of Power Sources*, Vol. 109, No. 2, July 2002, pp. 377-387, ISSN 0378-7753
- Wachtler, M.; Winter, M. & Besenhard, J. O. (2002). Anodic materials for rechargeable Li-batteries. *Journal of Power Sources*, Vol. 105, No. 2, March 2002, pp. 151-160, ISSN 0378-7753
- Wakihara, M. (2001). Recent developments in lithium ion batteries. *Materials Science & Engineering R-Reports*, Vol. 33, No. 4, June 2001, pp. 109-134, ISSN 0927-796X
- Wang, B. L.; Chen, Q.; Hu, J.; Li, H.; Hu, Y. F. & Peng, L. M. (2005). Synthesis and characterization of large scale potassium titanate nanowires with good Li-intercalation performance. *Chemical Physics Letters*, Vol. 406, No. 1-3, April 2005, pp. 95-100, ISSN 0009-2614
- Wang, G. J.; Gao, J.; Fu, L. J.; Zhao, N. H.; Wu, Y. P. & Takamura, T. (2007). Preparation and characteristic of carbon-coated  $\text{Li}_4\text{Ti}_5\text{O}_{12}$  anode material. *Journal of Power Sources*, Vol. 174, No. 2, December 2007, pp. 1109-1112, ISSN 0378-7753
- Wang, G. X.; Ahn, J. H.; Yao, J.; Bewlay, S. & Liu, H. K. (2004). Nanostructured Si-C composite anodes for lithium-ion batteries. *Electrochemistry Communications*, Vol. 6, No. 7, July 2004, pp. 689-692, ISSN 1388-2481
- Wang, G. X.; Shen, X. P.; Yao, J. & Park, J. (2009). Graphene nanosheets for enhanced lithium storage in lithium ion batteries. *Carbon*, Vol. 47, No. 8, Jul 2009, pp. 2049-2053, ISSN 0008-6223
- Wang, L.; Yu, Y.; Chen, P.-C. & Chen, C.-H. (2008). Electrospun carbon-cobalt composite nanofiber as an anode material for lithium ion batteries. *Scripta Materialia*, Vol. 58, No. 5, 2008, pp. 405-408, ISSN 1359-6462



- Wang, L.; Yu, Y.; Chen, P. C.; Zhang, D. W. & Chen, C. H. (2008). Electrospinning synthesis of C/Fe<sub>3</sub>O<sub>4</sub> composite nanofibers and their application for high performance lithium-ion batteries. *Journal of Power Sources*, Vol. 183, No. 2, September 2008, pp. 717-723, ISSN 0378-7753
- Wang, S. Q.; Zhang, J. Y. & Chen, C. H. (2007). Dandelion-like hollow microspheres of CuO as anode material for lithium-ion batteries. *Scripta Materialia*, Vol. 57, No. 4, August 2007, pp. 337-340, ISSN 1359-6462
- Wang, Y.; Zhang, Y.-F.; Liu, H.-R.; Yu, S.-J. & Qin, Q.-Z. (2003). Nanocrystalline NiO thin film anode with MgO coating for Li-ion batteries. *Electrochimica Acta*, Vol. 48, No. 28, December 2003, pp. 4253-4259, ISSN 0013-4686
- Wen, Z.; Huang, S.; Yang, X. & Lin, B. (2008). High rate electrode materials for lithium ion batteries. *Solid State Ionics*, Vol. 179, No. 27-32, 2008, pp. 1800-1805, ISSN 0167-2738
- Wen, Z.; Wang, Q.; Zhang, Q. & Li, J. (2007). In Situ Growth of Mesoporous SnO<sub>2</sub> on Multiwalled Carbon Nanotubes: A Novel Composite with Porous-Tube Structure as Anode for Lithium Batteries. *Advanced Functional Materials*, Vol. 17, No. 15, August 2007, pp. 2772-2778, ISSN 1616-3028
- Wen, Z. S.; Yang, J.; Wang, B. F.; Wang, K. & Liu, Y. (2003). High capacity silicon/carbon composite anode materials for lithium ion batteries. *Electrochemistry Communications*, Vol. 5, No. 2, February 2003, pp. 165-168, ISSN 1388-2481
- Wu, Y. P.; Rahm, E. & Holze, R. (2003). Carbon anode materials for lithium ion batteries. *Journal of Power Sources*, Vol. 114, No. 2, March 2003, pp. 228-236, ISSN 0378-7753
- Xia, Y. N.; Yang, P. D.; Sun, Y. G.; Wu, Y. Y.; Mayers, B.; Gates, B.; Yin, Y. D.; Kim, F. & Yan, Y. Q. (2003). One-dimensional nanostructures: Synthesis, characterization, and applications. *Advanced Materials*, Vol. 15, No. 5, March 2003, pp. 353-389, ISSN 0935-9648
- Xiao, L.; Li, J.; Li, Q. & Zhang, L. (2009). One-pot template-free synthesis, formation mechanism, and lithium ions storage property of hollow SnO<sub>2</sub> microspheres. *Journal of Solid State Electrochemistry*, Vol. No. June 2009, pp. ISSN 1433-0768
- Yan, Y. & et al. (2007). Nanoporous cuprous oxide/lithia composite anode with capacity increasing characteristic and high rate capability. *Nanotechnology*, Vol. 18, No. 5, January 2007, pp. 055706, ISSN 0957-4484
- Yang, X. L.; Wen, Z. Y.; Huang, S. H.; Zhu, X. J. & Zhang, X. F. (2006). Electrochemical performances of silicon electrode with silver additives. *Solid State Ionics*, Vol. 177, No. 26-32, October 2006, pp. 2807-2810, ISSN 0167-2738
- Yao, W.; Yang, J.; Wang, J. & Tao, L. (2008). Synthesis and electrochemical performance of carbon nanofiber-cobalt oxide composites. *Electrochimica Acta*, Vol. 53, No. 24, October 2008, pp. 7326-7330, ISSN 0013-4686
- Yao, X. L.; Xie, S.; Nian, H. Q. & Chen, C. H. (2008). Spinel Li<sub>4</sub>Ti<sub>5</sub>O<sub>12</sub> as a reversible anode material down to 0 V. *Journal of Alloys and Compounds*, Vol. 465, No. 1-2, October 2008, pp. 375-379, ISSN 0925-8388
- Yazami, R. (1999). Surface chemistry and lithium storage capability of the graphite-lithium electrode. *Electrochimica Acta*, Vol. 45, No. 1-2, September 1999, pp. 87-97, ISSN 0013-4686
- Yin, J. T.; Wada, M.; Kitano, Y.; Tanase, S.; Kajita, O. & Sakai, T. (2005). Nanostructured Ag-Fe-Sn/carbon nanotubes composites as anode materials for advanced lithium-ion batteries. *Journal of the Electrochemical Society*, Vol. 152, No. 7, June 2005, pp. A1341-A1346, ISSN 0013-4651

- Yin, J. T.; Wada, M.; Tanase, S. & Sakai, T. (2004). Nanocrystalline Ag-Fe-Sn anode materials for Li-ion batteries. *Journal of the Electrochemical Society*, Vol. 151, No. 4, February 2004, pp. A583-A589, ISSN 0013-4651
- Yoo, E.; Kim, J.; Hosono, E.; Zhou, H.; Kudo, T. & Honma, I. (2008). Large reversible Li storage of graphene nanosheet families for use in rechargeable lithium ion batteries. *Nano Letters*, Vol. 8, No. 8, Aug 2008, pp. 2277-2282, ISSN 1530-6984
- Yoon, S.; Ka, B. H.; Lee, C.; Park, M. & Oh, S. M. (2009). Preparation of Nanotube TiO<sub>2</sub>-Carbon Composite and Its Anode Performance in Lithium-Ion Batteries. *Electrochemical and Solid-State Letters*, Vol. 12, No. 2, December 2009, pp. A28-A32, ISSN 1099-0062
- Yu, H.; Zhang, X.; Jalbout, A. F.; Yan, X.; Pan, X.; Xie, H. & Wang, R. (2008). High-rate characteristics of novel anode Li<sub>4</sub>Ti<sub>5</sub>O<sub>12</sub>/polyacene materials for Li-ion secondary batteries. *Electrochimica Acta*, Vol. 53, No. 12, May 2008, pp. 4200-4204, ISSN 0013-4686
- Yu, Y.; Chen, C.-H. & Shi, Y. (2007). A Tin-Based Amorphous Oxide Composite with a Porous, Spherical, Multideck-Cage Morphology as a Highly Reversible Anode Material for Lithium-Ion Batteries. *Advanced Materials*, Vol. 19, No. 7, March 2007, pp. 993-997, ISSN 1521-4095
- Zaghib, K.; Song, X.; Guerfi, A.; Rioux, R. & Kinoshita, K. (2003). Purification process of natural graphite as anode for Li-ion batteries: chemical versus thermal. *Journal of Power Sources*, Vol. 119-121, No. June 2003, pp. 8-15, ISSN 0378-7753
- Zhang, C. Q.; Tu, J. P.; Yuan, Y. F.; Huang, X. H.; Chen, X. T. & Mao, F. (2007). Electrochemical performances of Ni-coated ZnO as an anode material for lithium-ion batteries. *Journal of the Electrochemical Society*, Vol. 154, No. 2, December 2007, pp. A65-A69, ISSN 0013-4651
- Zhang, P.; Guo, Z. P.; Kang, S. G.; Choi, Y. J.; Kim, C. J.; Kim, K. W. & Liu, H. K. (2009). Three-dimensional Li<sub>2</sub>O-NiO-CoO composite thin-film anode with network structure for lithium-ion batteries. *Journal of Power Sources*, Vol. 189, No. 1, April 2009, pp. 566-570, ISSN 0378-7753
- Zhang, W.-M.; Hu, J.-S.; Guo, Y.-G.; Zheng, S.-F.; Zhong, L.-S.; Song, W.-G. & Wan, L.-J. (2008). Tin-Nanoparticles Encapsulated in Elastic Hollow Carbon Spheres for High-Performance Anode Material in Lithium-Ion Batteries. *Advanced Materials*, Vol. 20, No. 6, February 2008, pp. 1160-1165, ISSN 1521-4095
- Zhang, W.-M.; Wu, X.-L.; Hu, J.-S.; Guo, Y.-G. & Wan, L.-J. (2008). Carbon Coated Fe<sub>3</sub>O<sub>4</sub> Nanospindles as a Superior Anode Material for Lithium-Ion Batteries. *Advanced Functional Materials*, Vol. 18, No. 24, November 2008, pp. 3941-3946, ISSN 1616-3028
- Zhao, H.; Li, Y.; Zhu, Z.; Lin, J.; Tian, Z. & Wang, R. (2008). Structural and electrochemical characteristics of Li<sub>4-x</sub>Al<sub>x</sub>Ti<sub>5</sub>O<sub>12</sub> as anode material for lithium-ion batteries. *Electrochimica Acta*, Vol. 53, No. 24, October 2008, pp. 7079-7083, ISSN 0013-4686
- Zheng, S.-F.; Hu, J.-S.; Zhong, L.-S.; Song, W.-G.; Wan, L.-J. & Guo, Y.-G. (2008). Introducing Dual Functional CNT Networks into CuO Nanomicrospheres toward Superior Electrode Materials for Lithium-Ion Batteries. *Chemistry of Materials*, Vol. 20, No. 11, June 2008, pp. 3617-3622, ISSN 0897-4756
- Zhou, J.; Song, H.; Chen, X.; Zhi, L.; Yang, S.; Huo, J. & Yang, W. (2009). Carbon-Encapsulated Metal Oxide Hollow Nanoparticles and Metal Oxide Hollow Nanoparticles: A General Synthesis Strategy and Its Application to Lithium-Ion Batteries. *Chemistry of Materials*, Vol. 21, No. 13, May 2009, pp. 2935-2940, ISSN 0897-4756

IntechOpen

IntechOpen



## **Lithium-ion Batteries**

Edited by Chong Rae Park

ISBN 978-953-307-058-2

Hard cover, 132 pages

**Publisher** InTech

**Published online** 01, April, 2010

**Published in print edition** April, 2010

There have been numerous excellent books on LIBs based on various different viewpoints. But, there is little book available on the state of the art and future of next generation LIBs, particularly eventually for EVs and HEVs. This book is therefore planned to show the readers where we are standing on and where our R&Ds are directing at as much as possible. This does not mean that this book is only for the experts in this field. On the contrary this book is expected to be a good textbook for undergraduates and postgraduates who get interested in this field and hence need general overviews on the LIBs, especially for heavy duty applications including EVs or HEVs.

### **How to reference**

In order to correctly reference this scholarly work, feel free to copy and paste the following:

Hong Soo Choi and Chong Rae Park (2010). Towards High Performance Anodes with Fast Charge/Discharge Rate for LIB Based Electrical Vehicles, Lithium-ion Batteries, Chong Rae Park (Ed.), ISBN: 978-953-307-058-2, InTech, Available from: <http://www.intechopen.com/books/lithium-ion-batteries/towards-high-performance-anodes-with-fast-charge-discharge-rate-for-lib-based-electrical-vehicles>

**INTECH**  
open science | open minds

### **InTech Europe**

University Campus STeP Ri  
Slavka Krautzeka 83/A  
51000 Rijeka, Croatia  
Phone: +385 (51) 770 447  
Fax: +385 (51) 686 166  
[www.intechopen.com](http://www.intechopen.com)

### **InTech China**

Unit 405, Office Block, Hotel Equatorial Shanghai  
No.65, Yan An Road (West), Shanghai, 200040, China  
中国上海市延安西路65号上海国际贵都大饭店办公楼405单元  
Phone: +86-21-62489820  
Fax: +86-21-62489821

© 2010 The Author(s). Licensee IntechOpen. This chapter is distributed under the terms of the [Creative Commons Attribution-NonCommercial-ShareAlike-3.0 License](#), which permits use, distribution and reproduction for non-commercial purposes, provided the original is properly cited and derivative works building on this content are distributed under the same license.

IntechOpen

IntechOpen