

# We are IntechOpen, the world's leading publisher of Open Access books Built by scientists, for scientists

**4,800**

Open access books available

**122,000**

International authors and editors

**135M**

Downloads

Our authors are among the

**154**

Countries delivered to

**TOP 1%**

most cited scientists

**12.2%**

Contributors from top 500 universities



**WEB OF SCIENCE™**

Selection of our books indexed in the Book Citation Index  
in Web of Science™ Core Collection (BKCI)

Interested in publishing with us?  
Contact [book.department@intechopen.com](mailto:book.department@intechopen.com)

Numbers displayed above are based on latest data collected.

For more information visit [www.intechopen.com](http://www.intechopen.com)



## Wood wasp inspired planetary and Earth drill

Thibault Gouache and Yang Gao  
*Surrey Space Centre  
United-Kingdom*

Yves Gourinat  
*Institut Supérieur de l'Aéronautique et de l'Espace  
France*

Pierre Coste  
*ESTEC  
European Space Agency*

### 1. Introduction

The exploration of the solar system is known to be very challenging to scientists, engineers and, technicians alike. One of the most difficult engineering challenges in extra-terrestrial exploration is gaining access to sub-surface samples and data. The fact that there have only been three successful drilling missions on extraterrestrial bodies (Russian Luna missions to the Moon, American Apollo missions to the Moon and Russian Venera missions to Venus) illustrates the high difficulty of sub-surface exploration on other planetary bodies than the Earth. However the potential scientific return of a sub-surface exploration mission is immense. For example, if we wish to detect the presence of organic molecules on Mars, we must dig through the first layers of the soil. Indeed, any organic molecule in these first layers is subject to high concentrations of oxidizing elements and is exposed to high ultraviolet fluxes which rapidly decompose it.

In this chapter, we will explain why the low gravity encountered on Mars or on the Moon and, the low mass of the probes, landers and rovers that carry drilling devices limit classical drilling techniques. Novel boring solutions optimised in mass and power consumption are thus needed for space applications. Biologists have identified the wood wasp, an insect that is capable of "drilling" into wood to lay its eggs. A low mass and low power system, like an insect, capable of drilling into wood is of the highest interest for planetary drilling and terrestrial drilling alike. The general working principle of the wood wasp drill ("dual reciprocating drilling") will be exposed and the potential benefits of imitating the wood wasp for planetary drilling will be highlighted.

Since the nature of wood is highly fibrous but the nature of extraterrestrial and terrestrial soils are not, it is necessary to adapt the wood wasp ovipositor to our target soils. A test bench to evaluate the influence of the different geometries and operational parameters was produced and is presented here. The dual reciprocating drilling experimental results obtained

on this test bench are also highlighted. They should lead to a new and enhanced model and comprehension of dual-reciprocating-drilling.

## 2. The challenges of drilling in extra-terrestrial bodies

### 2.1 Why drill in planetary bodies?

Drilling and subsurface exploration is called upon regularly in space missions. It is needed for producing samples for scientific payloads or sample return missions. But sampling is not the only reason for creating a borehole. The existence of the borehole allows a robot or a human to place captors in it for in-situ experimentation: for instance a neutron probe for water detection, an amino-acid bio-marker detection Skelley et al. (2005) or a thermal sensor for temperature gradient and flux evaluation Komle, Hiltner, Kargl, Ju, Gao & Grygorczuk (2008); Komle, Kaufmann, Kargl, Gao & Rui (2008). A borehole also gives access to the stratigraphy of the terrain. This access is of utmost importance since it allows numerous studies. The study of the planets past and thus the solar systems past, the evaluation of potential usable resources for manned exploration and, the assessment of soil mechanical properties for future man constructions are a few examples. The process of drilling itself and the telemetry recorded during this operation contains a large amount of scientific information. For instance, the operational parameters of the NASA (National Aeronautics and Space Administration) RAT (Rock Abrasion Tool) operating on Mars were used to evaluate the grindability or specific grind energy of the different tested Martian rocks. By comparing these values to tests done on Earth, it has been established that Martian rocks resemble (in terms of grindability) a range of Earth rocks going from gypsum to low strength basalts Myrick et al. (2004).

The four goals of future Mars scientific exploration outlined by the MEPAG (Mars Exploration Program Analysis Group) illustrate the importance of subsurface access. Indeed, each of the four identified goals require boring capabilities (Goal I: Determine if life ever arose on Mars; Goal II: Understanding the processes and history of climate on Mars; Goal III: Determine the evolution of the surface and interior of Mars; Goal IV: Prepare for human exploration) (MEPAG). The NASA Solar System Exploration Roadmap published in 2006 also put emphasis on the necessity of developing surface and subsurface mobility for solar system exploration missions Directorate (2006). There are numerous missions that are currently under development and that will require sub-surface exploration capabilities: MoonLite Gao, Phipps, Taylor, Clemmet, Parker, Crawford, Ball, Wilson, Curiel, Davies et al. (2007); Gao, Phipps, Taylor, Crawford, Ball, Wilson, Parker, Sweeting, da Silva Curiel, Davies et al. (2007); Gowen et al. (2008), ExoMars Van Winnendael et al. (2005), MSL (Mars Science Laboratory) Steltzner et al. (2006) and MSR (Mars Sample Return) O'Neil & Cazaux (2000).

### 2.2 Classical drilling methods and their performance in low-gravity

Drilling can be seen as a two-step process. First, it is necessary to break the drilled substrate. Then, the created cuttings must be evacuated. These two steps can either be conducted simultaneously or independently. There are four different general ways of creating drilling debris: with heat that vaporizes or sublimates the bored substrate or that generates cracks in it, by chemicals or by mechanical action Zacny et al. (2002). Since planetary drilling is exclusively used for scientific exploration, samples and the local environment must not be drastically altered by the drilling process. Thus only mechanical action is suitable.

Rotary drilling is the most commonly used technique in the oil and gas industry Azar & Samuel (2007). To successfully create a vertical or directional hole thanks to rotary drilling

three components are necessary: a force acting on the drill bit or WOB (Weight On Bit), the rotation of the drill bit and the evacuation of the drillings. The rotation of the drill bit is created by a motor (incorporated in the drill stem or above the drill stem on ground level). Usually the drillings are evacuated by drilling fluids injected at the bottom of the hole. Because of contamination issues and mass issues this is not acceptable. Generally planetary rotary drilling relies on dry auger evacuation of drillings. The danger of dry auger evacuation is jamming the drill stem. This happened to Apollo 15 astronauts who had great difficulties drilling more than one meter into the Lunar regolith Heiken et al. (1991). The astronauts had to use tools to remove the jammed drill from the ground and exceeded their nominal extra-vehicular activity time by doing so.

Despite the difficulties due to drillings evacuation, the biggest limit of classical drilling techniques in low-gravity is the WOB requirement. Indeed, for a rotary drill to cut into a rock formation, it is necessary to have a sufficient WOB. On Earth generating the correct WOB is quite easy. In deep oil drilling, the oil rig pulls on the drill stem to lower the WOB, rather than having to push on it. The mass of the drilling systems and Earth's gravity are more than sufficient to generate the proper WOB. On Mars or on the Moon where the gravity is respectively one third and one sixth of Earth's gravity, the same mass will create a third or a sixth of the WOB it would create on Earth. Furthermore, space systems are highly mass constrained. Engineers and mission architects spend most of their energy to reduce the mass of their systems. Thus the systems carrying rotary drills in space have low mass. Their low mass combined to the low-gravity environment allows little WOB and thus limits classical rotary drilling.

Many research efforts have been made to propose alternatives to classical rotary drilling. For instance the sonic and ultra-sonic drilling technique (USDC) uses high frequency oscillations and resonance to impose important accelerations to the drill head thanks to a free mass. These high level accelerations induce high stresses on the drilled formation and fracture it without requiring important WOB. Two teams, one from JPL and the other one from UK based company Magna Parva Peter Thomas (2009), have developed this concept. Another concept developed is the "mole". A mole is capable of burying itself into planetary soil. A mole can reach much larger depths than its own length without needing complex drill string assembly. To progress, a mole can use many drilling principles like classical rotary drilling. A very simple and efficient manner of making a mole progress is percussive action. In this case percussive action will not fracture rock but will allow soil penetration by compression and displacement. This was used on the PLUTO (PLanetary Underground TOol) Mole Sampling Device on ESA Mars Express lander Beagle 2 Richter et al. (2002). This mole can be deployed vertically or horizontally Richter et al. (2001). A DC electric motor displaces a mass and compresses a spring inside the mole. The energy accumulated in the spring is then released and the mass hits the mole casing. This shock allows the mole to progress. The design also allowed for reverse hammering to facilitate mole retrieval Richter et al. (2004).

Some researchers have turned themselves towards Nature to draw inspiration. In Europe, with the help of the ESA (European Space Agency) Advanced Concept Team, a number of bio-inspired solutions for sub-surface exploration have been explored. The two most promising solutions that have been identified are a locust inspired design and a wood wasp inspired design. The locust can dig into soil to lay its eggs. To do so it uses the two valves of its ovipositor that are capable of spreading apart and closing to enlarge the borehole and pull the locust abdomen further into the drilled soil. A simple physical model and a numerical model of this drilling mechanism were developed and showed promising results, though more work

is necessary before a fully functional 3D engineering model exists Menon et al. (n.d.). The wood-wasp inspired drill is the subject of this work.

### 3. The wood wasp ovipositor

#### 3.1 Ovipositor morphology

Large numbers of insects have ovipositors allowing them to lay their eggs. Some insects commonly named "wood wasps" have ovipositors capable of drilling into wood to lay their eggs. Ovipositors also have numerous other functions like envenomation, defensive stinging or host location. For a more detailed description of ovipositors (evolutionary considerations, morphology, structures, oviposition strategies, etc.) refer to Quicke et al. (1999). Figure 1 is a middle region schematic of a typical ovipositor. The ovipositor has an upper or dorsal valve and two lower or ventral valves Rahman et al. (1998). Vincent and King Vincent & King (1995) described the morphology of two ovipositors: the short and rigid one of *Sirex noctilio* (10mm long and 0.26mm diameter) and the long and thin one of *Megarhyssa nortoni nortoni* (50mm long and 0.2mm diameter). They chose these two species because their ovipositors represent the large diversity of observed ovipositor morphologies of wood drilling wasps. They observed the ovipositors thanks to a Leica S440 scanning electron microscope. These observations revealed that the two ovipositors have different structures. Each ovipositor tip is covered with teeth. For both of these species the four first teeth at the tip of the ovipositor point proximally. In the case of *M. n. nortoni* the rest of the teeth also point proximally but decrease in size. For *S. noctilio* the following teeth progressively point distally. Differences in morphologies naturally induce differences in drilling mechanism.

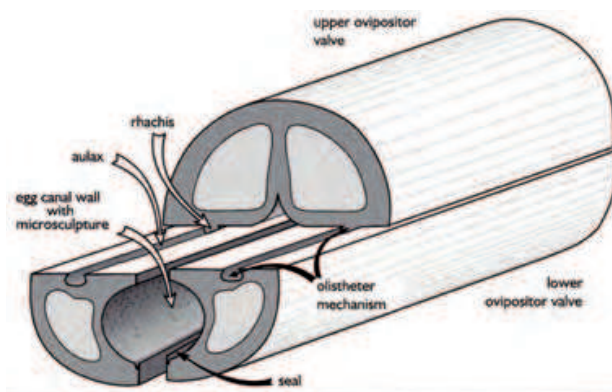


Fig. 1. Schematic of the middle region of a typical ovipositor Rahman et al. (1998).

#### 3.2 Drilling Mechanism

Vincent and King described the "drilling" mechanism of both of these species. The insect moves its two lower valves back and forth: when one valve is protruding the other is retracted and then the protruding valve is retracted and the retracted valve is deployed (see Figure 2). For both insects, the first teeth pointing proximally will engage in the cell wall of the wood cells and then break these cell walls in tension with the part of the ovipositor pulling upwards. The advantage of using such mechanism is that the available force is not limited by buckling considerations but only by the limit of insect muscular power. Before the upward stroke of the ovipositor can break the cell walls in tension, the downward stroke must allow the pushing part of the ovipositor to traverse the wood cell wall. To do so the required force is partially

generated by the overhead push of the insect on its ovipositor. This overhead push is limited by the critical buckling force of the ovipositor. To generate extra push the insect uses the tensile forces generated by its proximally facing teeth that are engaged in the wood cell walls. This also allows the receding valve to be in tension and to stabilize the ovipositor and reduces buckling risks. For *M. n. nortoni*, Vincent and King estimated the tension force to be ten times higher than the critical buckling load of the ovipositor. Thus the load that the insect can impose on the tip of the downward going valve of its ovipositor is principally generated by the resistance of the wood to the tensile forces of the upward moving valve (see Figure 2).

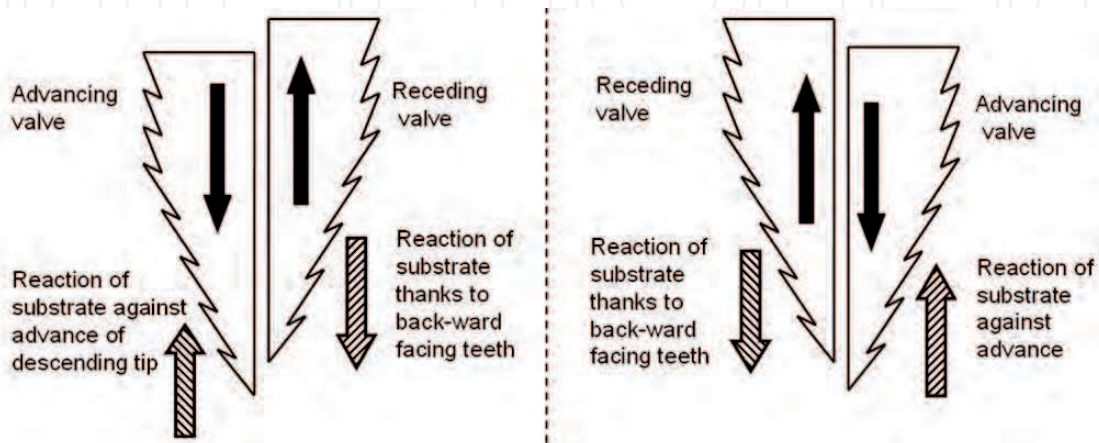


Fig. 2. Schematic of reciprocation movement and dual-reciprocating drill principle used by wood wasps.

### 3.3 Lessons learnt

When observing in detail the anatomy of the wood wasps' ovipositor and the possible mechanisms that could explain its capacity to drill into wood, two main "lessons" for drilling engineering can be learnt: "reaction generation" and "tension stabilisation". Reaction generation is the use of backward facing teeth to generate a reaction of the substrate in direction of drilling. The microstructures or the friction coefficient of the valve must be sufficient for the valve to mobilise the shearing resistance of the substrate and not slip on the surface of the substrate. Tension stabilisation is using the reaction of the substrate generated by the "reaction generation" to create tension forces in the receding valve. The valve in tension is no longer subject to Euler buckling issues. Thanks to the ovipositor's *olstheter* (sliding joint made of a T-shaped groove (*aulax*) on the lower valve and of a corresponding T-section ridge (*rachis*) on the upper valve) the progressing valve which is in compression is linked to the valve in tension. If the critical buckling load of the compressed valve were to be exceeded, it would become unstable and tend to buckle. But because it is linked to the other valve which is stabilized by the tension, the compressed valve can not deviate from its position. The valve in tension acts as a guide or support structure to the compressed valve. Thus the critical buckling load of the compressed valve can be exceeded without buckling issues. Many other observations of ovipositor morphology could lead to bio-mimetic applications (the ovipositors *olstheter* or the ovipositor steering mechanisms for instance).

## 4. DRD technologies

### 4.1 Planetary Drill

The wood-wasp drilling mechanism proposed in Vincent & King (1995) fostered high hopes in the planetary drilling and sampling community. Apart from the general potential of biomimetic systems to be low-mass and efficient, the perspective of being able to generate the drilling forces between two valves with “no net external force required” (the receding valve generating the force required for the advancing valve) was of premium interest Gao et al. (2005). Indeed, as explained previously, space systems are constrained in mass and must operate in low gravity environments, thus the total over head force available for a drilling system is low. Classical rotary drilling techniques need high over-head forces and thus have limited performance in space applications Gao et al. (2005).

To assess the feasibility of the wood-wasp inspired drill a first experimental setup was built to measure the necessary cutting forces. The drill bits were manufactured in ABS plastic and the drilled substrate was polystyrene. The rack angle of the drill bit was varied as well as the cutting speed. Authors concluded thanks to these test that there is an optimal cutting speed to maximise drilling output power. The effects of the rack angle were also shown. Higher rake angles were shown to produce higher cutting forces. It was also shown that after increasing with cutting speed, the cutting force passes through a maximum and then decreases whatever the rack angle Gao et al. (2005). Further on a simple DRD mechanism with metal drill bits was built. A pin and crank mechanism that was positioned over the drill bits was used (see Figure 3).



Fig. 3. Picture of the planetary DRD first prototype (right) and of its drill bits (left) Gao, Ellery, Jaddou, Vincent & Eckersley (2007).

Three different drilled substrates were tested (condensed chalk, non fired clay and lime mortar) and drilled at 9 different power levels. This first prototype drilled faster in softer substrates (lower compressive strength) than in harder ones with the same input power. The fact that drilling speed generally grew with penetration depth was identified. This was explained by potential cracks that could have formed in the drilled substrate Gao, Ellery, Sweeting & Vincent (2007). Another potential explanation proposed here is that the deeper the drilled hole the more the backward facing teeth can engage in the drilled surface, thus allowing a higher WOB for penetrating valve. In Gao, Ellery, Sweeting & Vincent (2007) authors also proposed an empirical model allowing to predict the penetration speed  $v_d$  of their DRD mechanism based on input power  $P$  and substrate compressive strength  $\epsilon$  as model inputs.

$$v_d \propto k \cdot P \cdot \frac{1}{\sqrt{\epsilon}} \quad (1)$$

But above all the experimental work presented was the first implementation of DRD and proved the feasibility of DRD in soil and low strength rocks. Thanks to these first two studies, a light (< 10kg) micro penetrator concept housing a DRD was proposed Gao, Ellery, Jaddou, Vincent & Eckersley (2007).

#### 4.2 Brain Probe

The wood wasp drilling mechanism described in Vincent & King (1995) has also fired new technological developments in neurosurgical probes (see Fig. 4). The possibility of being able to insert a fine probe under very low normal force into a brain could allow lowering the damage done to a brain during minimal invasive surgery Parittotokkaporn et al. (2009). The flexibility and the possibility of being able to steer a flexible neurosurgical probe like an ovipositor is steered would enable surgeons to avoid key zones of the brain when operating. For the moment this is limited by the rigid probes used Frasson, Parittotokkaporn, Schneider, Davies, Vincent, Huq, Degenaar & Baena (2008). However it is important to note that the main function of the ovipositor is to remove wood whereas the neurosurgical probe should displace tissue.



Fig. 4. Picture of the brain probe prototype (left) and pen as size reference (right) Frasson, Parittotokkaporn, Davies & Rodriguez y Baena (2008).

Inspired by the texture of the ovipositor of *Sirex Noctilio*, surfaces having different tribological properties depending on the direction in which they are moved were manufactured. To emulate the surface of an ovipositor, fin and tooth like microstructures with high-aspect ratios were manufactured thanks to advanced microelectronic mechanical systems (MEMS) fabrication technique. A large range of micro-structure size were manufactured (ranging from 10 $\mu\text{m}$  to 500 $\mu\text{m}$ ). For more details on manufacturing and related issues refer to Schneider et al. (2008; 2009).

A first series of tests were conducted thanks to the manufactured micro-structures. The goal was to determine whether or not the reciprocating motion of the microstructures was sufficient to induce the displacement of a specimen. The specimens tested ranged from inorganic materials to organic and also biological ones. The microstructures were reciprocated on the surface of each tested specimen. A specific air bearing was designed to lower the friction the specimen was subject to. It was showed that most soft organic tissues and most inorganic materials did not allow the micro structures to have sufficient grip on the specimen for it to move significantly. A good correlation between the microtexture size and the slip on the specimen was found. Five different microstructure/specimen interaction mechanisms were proposed. The damage created by the microstructures during the reciprocation motion was also investigated. This first work proved the feasibility of soft tissue traversal thanks to anisotropic



frictional properties and reciprocating motions with minimal tissue damage Parittotokkaporn et al. (2009).

The microstructures were then mounted onto a neurosurgical probe. The dynamic properties of the probes in a bi-directional axial displacement test done in brain tissues were explored. The forces necessary for their surgical probe to progress and the forces generated during the retraction of the probe were recorded. Since these two forces are of the same order of magnitude they have concluded that a brain probe using dual-reciprocating-drilling is feasible. Such a surgical tool would thus take benefit of the anisotropic tribological properties of its surface to progress thanks to reciprocating motion. It was even showed that the presence of the microstructures on the probe reduces the necessary amount of force to insert the probe in the brain tissues (when compared to a smooth probe) Frasson, Parittotokkaporn, Davies & Rodriguez y Baena (2008). The future work planned on this development include: the understanding of the tissue/probe interaction and the exploration of the effects of the normal force, of tissue properties and of reciprocating speed on soft tissue traversal.

### 4.3 Dual-Reciprocating-Drilling

As shown above, the wood-wasp drilling mechanism has inspired different technological developments. Here and in further publications the wood-wasp inspired drilling mechanism will be referred to as dual-reciprocating drilling. Indeed the drilling mechanism is based on the reciprocation motion of two tools or valves. Any drilling mechanism which disrupts or progresses into the drilled substrate thanks to the reciprocation of two tools in opposition one to another will be referred to as dual-reciprocating drilling (DRD). In DRD, the two reciprocated tools will be referred to as valves like in the wood-wasp morphology or drill bits.

### 4.4 Study Rationales

In Gao, Ellery, Sweeting & Vincent (2007), Gao et. al. highlighted some interesting research to be done on their DRD: optimize the geometry of drill bit, experiment on a wide variety of substrates, work on sample extraction method and build a prototype. In Frasson, Parittotokkaporn, Davies & Rodriguez y Baena (2008), Frasson et. al. have also insisted on the numerous studies needed before a fully functional brain probe can be proposed to neurosurgeons. Even the observations of the morphology of ovipositors still have much room for progress: "Almost nothing is known about the mechanics of substrate penetration and the interactions between the ovipositor valves and the substrate. No measurements of the rate or extents of ovipositor valve movements are available [...]." Quicke et al. (1999). Before an operational and space-qualified DRD can be proposed to solar system exploration missions it is key that more knowledge be collected. Two main questions need answering

#### 4.4.1 What fundamental mechanism does DRD use to penetrate planetary soils?

Vincent and King proposed a basic drilling mechanism for the wood wasp's ovipositor. Though there is still room for more in depth understanding, it is very satisfying. However it is very unlikely that the mechanism they have described is applicable to a planetary DRD advancing in lunar regolith. Indeed wood is made of fibres but regolith is not. It is thought that the teeth of the wood wasp ovipositor have been optimised (through natural selection) to the size of wood cell walls. Further more, it is unclear whether or not a planetary DRD would use the same basic mechanism of progression in a granular material and in a soft rock formation. However understanding the fundamental drilling mechanism is key. This would allow engineers to optimize their designs.

For the moment three possible basic drilling mechanisms have been identified: displacement, compression and local shear/evacuation (see Fig. 5). In order to penetrate the substrate a mole, like the Beagle 2 Pluto mole, will displace the substrate around it. The substrate directly in front of the tip will be pushed down; the substrate further away will be pushed to the side and up. Upheaval of the substrate at the surface will be observed around the DRD. It is also likely that the displacement of the substrate will be accompanied by compression of the substrate. In some cases (high initial void ratio or low relative density of the substrate) compression will dominate. The compression of the substrate in the local vicinity of the drill will be sufficient to create enough room for the drill to progress. In such cases the substrate directly around the drill will be compressed and the substrate further away from the drill will not be affected (no displacement nor compression). A dip in the ground level around the DRD will be observed. The final mechanism is local shear and evacuation. It is possible to locally shear and displace the substrate and evacuate it. This method is the most similar to classical rotary drilling. Since this mechanism allows very localised action, it intuitively has the best low-energy potential. Whether these are applicable to a planetary DRD in planetary regolith is the first major contribution envisaged for this work. It is possible that none of the three mechanisms proposed allow a correct interpretation of our future observations and that a new mechanisms will have to be proposed.

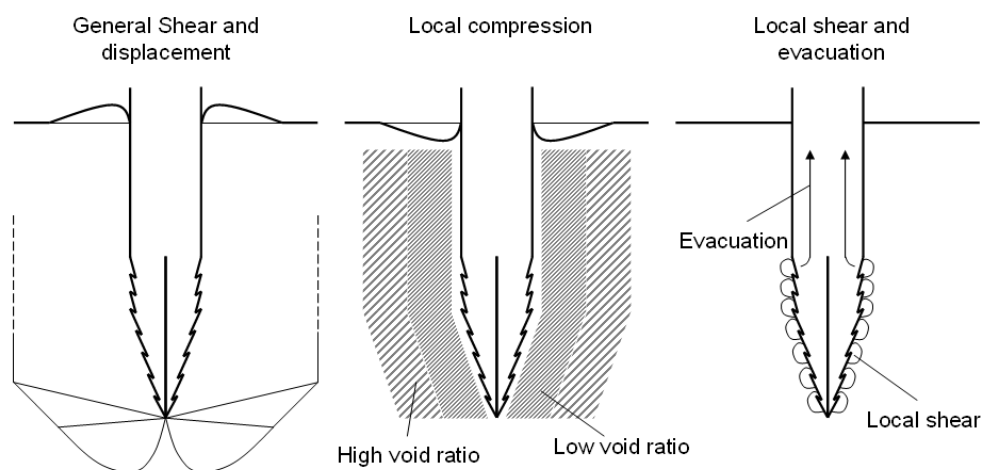


Fig. 5. Illustration of the three proposed basic drilling processes.

A very closely linked issue is the identification of the progression mechanism. Indeed it is unclear whether the force generated by the backward facing teeth of the receding valve is sufficient to make the entire drill progress. This is unclear even in the biological system. Little detail is given on the progression of the entire ovipositor and the role of the third valve.

#### 4.4.2 Which parameters influence DRD performance?

For the moment only substrate compressive strength and input power have been explored and linked to drilling speed (see Equation 1). However a large number of parameters could play a role in DRD performance and force and power requirements. Before optimised planetary DRD designs can be proposed it is necessary that the key parameters driving DRD be identified. Parameters potentially playing a role in DRD have been identified and split into 3 categories: geometry of the drill head, operational parameters and substrate properties.

#### 4.4.2.1 Geometry of drill head

The wood wasp ovipositor morphology being highly complex, it is impossible to mimic it fully. A simplified geometry has been adopted. Each DRD valve will be a half cone on top of a half cylinder. Such a general form is defined by three parameters: cone apex angle  $\alpha$ , cylinder radius  $R$ , and cylinder length  $L$ . Each part of the DRD valve (cone and cylinder) will have specific tooth geometry. To define each tooth we need to know: two angles (respectively  $\alpha_1, \gamma_1$  and  $\alpha_2, \gamma_2$ ) and the number of teeth on each part (respectively  $N_1$  and  $N_2$ ). The geometry of the DRD valves is thus fully defined by nine geometrical parameters (see Figure 6).

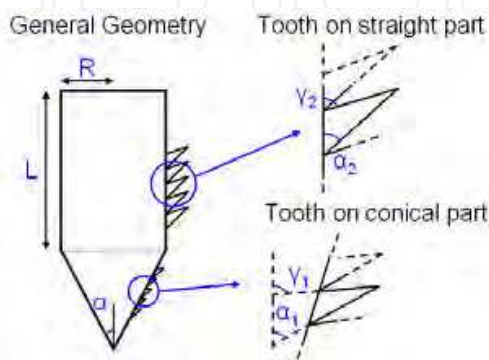


Fig. 6. Schematic of drill head geometry.

#### 4.4.2.2 Operational parameters

How the valves are displaced must also be defined. The reciprocation motion is defined by its amplitude ( $\delta$ ) and its frequency ( $f$ ). These two parameters are linked to others like input voltage, input current, input power and drilling speed. The depth  $d$  of the DRD valves and the over-head force or mass available to push on the drill are also very important operational parameters.

#### 4.4.2.3 Substrate parameters

DRD technology is very novel and its full potential is not yet understood. It is thus important that it be tested in a wide variety of substrates: high void ratio sands, low void ratio regolith simulants and low unconfined strength rocks like the ones used in Gao, Ellery, Sweeting & Vincent (2007). Defining a set of parameters to describe the mechanical properties of rocks and granular materials alike is not feasible. For granular materials, angle of internal friction, cohesion, particle size distribution, angularity, density and void ratio can be considered. For soft cohesive formations unconfined compressive strength, elastic modulus and shear modulus can be considered.

## 5. Experimental Setup

### 5.1 A new DRD test bench

#### 5.1.1 Design constraints

To answer the two main questions exposed in subsection 4.4, a new DRD test bench was designed. This new test bench presents added functionality compared to the first planetary DRD prototype. Indeed it allows the exploration of a wider range of parameters: variation of drill valve geometry, reciprocation movement amplitude and frequency. Apart from reciprocation

movement frequency, this was not feasible in the first planetary DRD prototype. But above all, this new DRD test bench was designed to allow the control of the over-head weight or force acting on the DRD valves. Indeed the added-value foreseen in a planetary DRD is its ability to drill with little or no over-head force requirements. A strict control of the over-head force on the DRD valves was not implemented on the first planetary DRD prototype. The new DRD test bench has a counter-mass and pulley system to control the vertical force acting upon the DRD. However, because of the numerous new functions, the mass of the test bench is significantly higher than the mass of previous setup.

### 5.1.2 Test bench description

A schematic, CAD-view and a picture of the new DRD test bench are presented Figure 7. The main elements of the test bench are the DRD mechanism (made of a motor, a movement transformation mechanism and the DRD valves) fixed on an aluminium plate, two rails guiding the aluminium plate (vertical translation), a counter mass system with two pulleys, and the data acquisition and control chains.

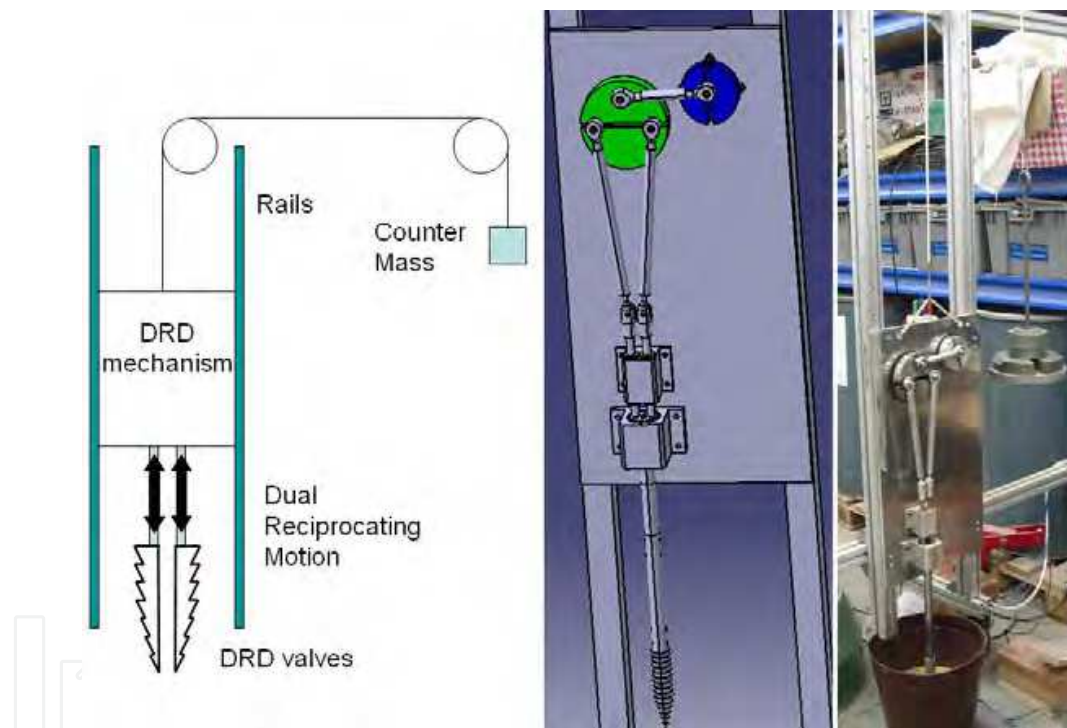


Fig. 7. Schematic and picture of DRD test bench.

The DRD mechanism is made of a continuous current motor, a movement transformation mechanism and the DRD valves. To transform the rotation of the motor into a dual reciprocation motion, a three rod, double pin and crank mechanism was manufactured. In order to allow modification of the amplitude without deeply transforming the reciprocation cycle and its symmetry, it is possible to modify the lengths as well as the fixation points of the rods. Figure 8 illustrates some possible valve movements that the DRD test bench can produce (grey lines) and some valve movements it would have produced if the length of the rods had not been modifiable (black lines).

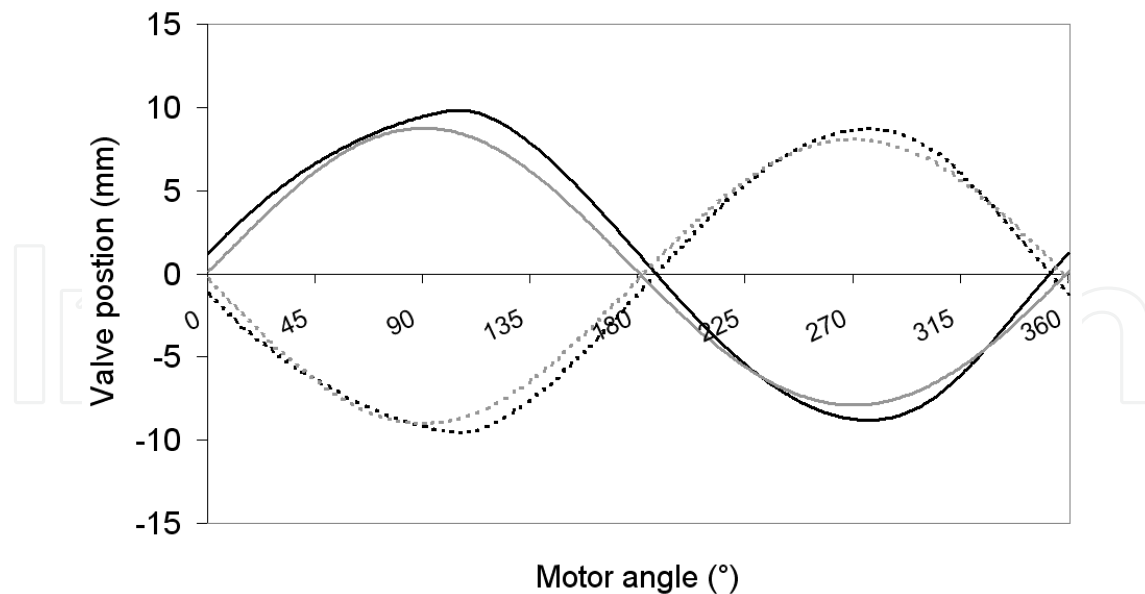


Fig. 8. Possible valve movements of the DRD test bench versus motor angle. Grey lines represent valve movements obtained thanks to the modifiable rod length; black lines represent movement obtained if rod had a set length. Dotted lines are left valve, full lines are right valve.

The counter-mass is setup with two pulleys. Interpretation of the role of the counter-mass must be done with caution. Indeed the counter-mass does not allow to mimic low gravity. If the global equilibrium of the plate supporting the DRD mechanism is considered, it can be seen that the vertical force on the valves does depend on the value of the counter-mass, but the maximum difference between the two valves does not. It is the strength of the rails that determine this value. If the DRD were housed in a rover or robot on the surface of the Moon or Mars, the maximum allowable force difference between the valves would be determined in part by gravity (and also by the carrier's geometrical setup). Another element that the counter-mass does not allow to control is the role of gravity on the drilled substrate. Experimental studies have been lead in partial gravity conditions to show the influence of gravity on bearing capacity of soils and have showed that gravity must be taken into account Bui et al. (2009). The electric motor frequency is controlled by varying input voltage. The input current and input voltage are monitored by TTI Multimeters and recorded automatically by a data acquisition desk top computer (at 0.5 Hz). The depth of the drill is recorded thanks to an image capture system. Its data acquisition frequency is also set to 0.5 Hz. For further details refer to Gouache et al. (2009b).

## 5.2 Substrates

As described by Neil Armstrong (Tranquillity Base, Apollo 11, July 20, 1969), the surface of the Moon appears to be "very, very fine-grained, as you get close to it, it's almost like a powder; down there, it's very fine [...] I can see the footprints of my boots and the treads in the fine sandy particles." . The samples brought back to Earth by the Luna and Apollo missions have widely been studied Heiken et al. (1991). The Moon is covered by regolith, a granular material. The surface of Mars is also covered by regolith though its origin (most probably weathering and communitation through impacts and wind more than chemical, biological and

water action) is believed to be different than Lunar regolith's origin (micrometeorites and meteorite impacts) Seiferlin et al. (2008). Since no large quantities of Lunar or Martian regolith are available on Earth, it is mandatory to rely on simulants. For mechanical testing (drilling, traficability, etc.) the mechanical properties of the simulant are more important than its chemical composition. Sands have already been used to simulate regolith. For instance the Beagle 2 mole was tested in sand Richter et al. (2001). Two sands have been identified and characterised as suitable Mars simulants at the Surrey Space Centre: SSC-1 and SSC-2. SSC-1 is a coarse-silty quartz sand and SSC-2 is a fine garnet sand. The mechanical properties of these two simulants and their particle distributions are given in Scott & Saaj (2009).

It has been noticed that the void ratio or relative density of a sand can influence (or even dominate) the behaviour of a structure interacting with it: traficability of rovers Brunskill & Vaios (2009); Scott & Saaj (2009) or penetration forces El Shafie et al. (2009) for instance. Thus, two substrate preparation methods were designed: one to obtain a low relative density substrate and the other one to obtain a high relative density substrate. Efforts have been focused on proposing a robust method able to reproduce the same relative density for a given substrate. The low relative density substrate is obtained by pouring the substrate into its container. The height of pouring and flow rate can have an incidence on the obtained density. It was observed that for heights above 40cm, there is little influence on final density. Thus all pouring were done from at least 50 cm high. The high relative density substrate is obtained by pouring the substrate into its container that is positioned on a vibrating table. Here the height of pouring has no influence on final density. Each of these methods was tested five times on both SSC-1 and SSC-2 (a total of 20 runs). The results of these tests are shown in table 1. The levels of relative density obtained are sufficiently spaced out (over 80% and under 10%) and low levels of deviation are observed (less than 5%). On the poured technique two runs (one with SSC-1 and one with SSC-2) gave anomalous results and were disregarded.

Relative density		SSC-1	SSC-2
High	Mean (%)	83	87
	Deviation (%)	4.6	1.8
Low	Mean (%)	7.4	0.0
	Deviation (%)	4.4	1.1

Table 1. Mean relative density and relative density deviation of SSC-1 and SSC-2 with high and low relative density preparation methods.

### 5.3 Design of experiment

The wide range of parameters potentially influencing DRD performance and the novelty of the technique have pushed authors to use design of experiment techniques. Indeed they allow to assess the influence of a large number of parameters by screening experiments while minimising the number of experiments to be done. A very complete presentation of such techniques is given in Montgomery (2009).

#### 5.3.1 Inputs and outputs

Here we have chosen to keep the same drill head geometry. The studied inputs with their low and high levels are:

- over-head mass (*OHM*): 2 kg and 5 kg

- frequency of reciprocation motion ( $F$ ): 0.5 Hz and 2.5 Hz
- amplitude of reciprocation motion ( $A$ ): 5 mm and 12 mm
- substrate type ( $S$ ): SSC – 1 and SSC – 2
- relative density ( $RD$ ): low and high

The studied outputs are:

- final depth of penetration ( $FD$ )
- total power during drilling ( $P$ )
- difference between power used during drilling and before drilling ( $\Delta P$ )
- total current during drilling ( $I$ )
- difference between the current required during drilling and before drilling ( $\Delta I$ )
- initial drilling velocity ( $IV$ )

### 5.3.2 Choice of experimental design

A two-level factorial design was chosen to evaluate the influence of the inputs on the outputs. The two levels adopted for each parameter were presented above. To be able to determine the influence of each input and their one-to-one interactions independently, it is necessary to choose a resolution V design. The adopted design is a 16 experiment, 5 parameter,  $2^{5-1}$  partial factorial resolution V design of experiment. The 16 experiments done are presented in table 2. For further details please refer to Gouache et al. (2009a).

Experiment	OHM	F	A	S	VR
1	-	-	-	-	+
2	+	-	-	-	-
3	-	+	-	-	-
4	+	+	-	-	+
5	-	-	+	-	-
6	+	-	+	-	+
7	-	+	+	-	+
8	+	+	+	-	-
9	-	-	-	+	-
10	+	-	-	+	+
11	-	+	-	+	+
12	+	+	-	+	-
13	-	-	+	+	+
14	+	-	+	+	-
15	-	+	+	+	-
16	+	+	+	+	+

Table 2. Description of the 16 experiments planned done with the DRD test bench.

## 6. Parameters driving DRD

### 6.1 Typical drilling results

#### 6.1.1 Drilling profiles

Of the 16 experiments done, 7 drilled to the maximum depth allowed by the test bench and 9 reached their FD. An example of each of these depth profiles are shown in 9(a). The drilling experiments that did not reach the maximum allowable depth levelled off in an exponential manner, the speed of penetration progressively decreasing to zero. The other experiments maintained a more or less constant speed through the drilling experiment. Before the drilling starts ( $t < 0$ ), the tip of the drill is placed at ground level. At  $t = 0$  the drill is released and it plunges into the substrate. The initial jump in depth can be seen in Figure 9(a). A typical power and current record are shown in figure 9(b). Before drilling starts ( $t < 0$ ) the power and current oscillate around a constant value. At  $t=0$  the drill is set free and penetrates the surface. Power and current go up. Finally the power and current oscillate around a new constant value.

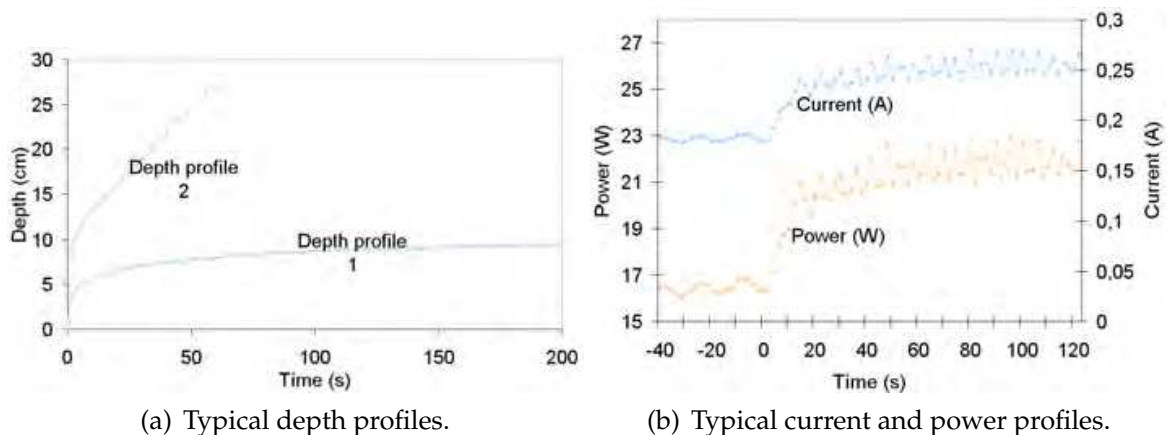


Fig. 9. Typical depth, current and power profiles observed during experiments on DRD test bench.

#### 6.1.2 Surface deformation

Fig. 10(a) is a picture of the drill head advancing into SSC-1. Fig. 10(b) is a picture of DRD advancing in SSC-2. When observing the surface of the drilled SSC-1 in Fig. 10(a), clear upheaval can be seen. For the SSC-2 case a clear dip can be seen in Fig. 10(b). For the test represented in Fig. 10(a), SSC-1 had been vibrated and for the test in Fig. 10(b), SSC-2 had been poured. These observations indicate that in high void ratio sand, the basic drilling mechanism is "local compression" and in low void ratio sand it is "general shear and displacement". (The low void ratio case could be also explained by the "local shear" basic mechanism but without evacuation, since the drill head is barely submerged by the drilled medium).



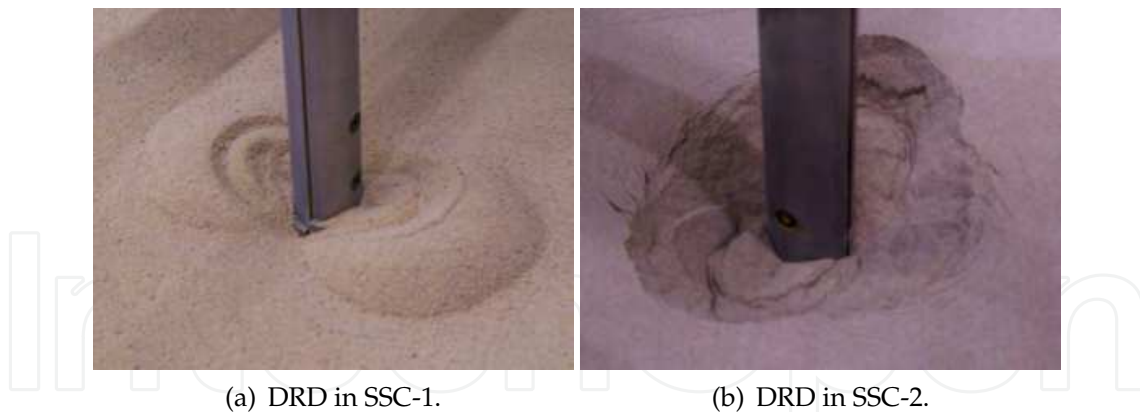


Fig. 10. Pictures of the deformation of substrate surface after drilling of DRD.

## 6.2 Analysis of main effects

Figure 11 represents the analysis of the 16 experiments done. It represents in % the modification of an output (ie: power, etc.) following the modification of an input (ie: frequency, etc.) from low level to high level. In figure 11, only the principle effects are shown. As can be seen in figure 11, FD is mainly driven by relative density. The higher relative density the lower FD is. For the 7 experiments that reached the maximum allowable depth, an arbitrary value of 100 *cm* was given as FD. This value was changed from 50 *cm* to 500 *cm* without any major differences in our conclusions. F and A also have influence on FD, almost as much as OWM. Thus by choosing a correct set of F and A, important depths should be reached. Power is evidently driven by frequency. OHM and A have a high influence on  $\Delta P$  and little influence on P. Indeed OHM and A only have influence on the drilling phase and do not modify the power needed to overcome friction in the test bench. A higher F induces higher current (or torque) requirements but lower  $\Delta I$ . Indeed, as frequency goes up, the power required to compensate the friction in the DRD prototype goes up. However a higher drilling frequency can lower the forces needed for the drilling process. Indeed in granular materials the critical state friction can be lower than the peak friction. Higher amplitude and higher OHM require higher drilling forces. IV is mainly determined by OHM. This is quite logical, since the higher the OHM, the more force the DRD valves have on them.

## 6.3 Analysis of interactions

Following the analysis of the main effects, a linear model was built. The high levels of dispersion showed that the interactions between main parameters must be taken into account to explain the experimental results obtained. The main interactions identified are presented. For FD, interactions between frequency and OHM and frequency and amplitude play an important role. For  $\Delta P$  interaction amongst frequency, amplitude and OHM play are of interest. OHM and RD interaction as well as F and RD interaction influence  $\Delta I$ . IV is highly affected by the interaction between relative density and amplitude.

## 7. Conclusion

The need for planetary sub-surface exploration techniques (to discover life on Mars for instance) and the limitations of classical drilling techniques in low gravity environments have fostered many technological developments. Amongst these a bio-mimetic solution inspired by

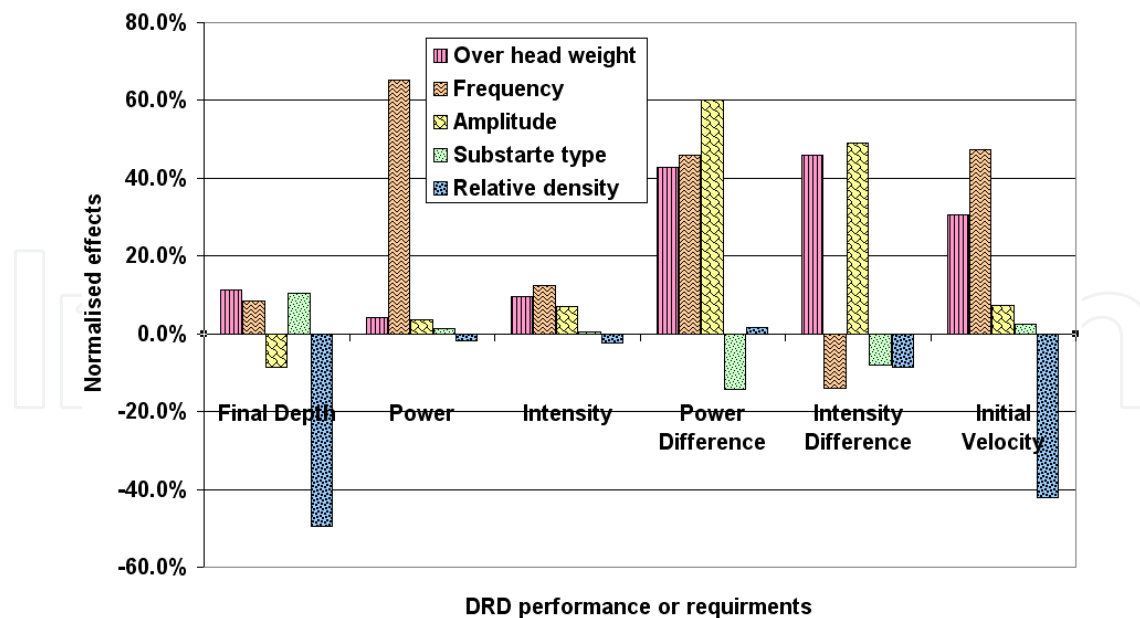


Fig. 11. Analysis of the 16 experiments: in % the modification of an output following the change in an input from low level to high level.

the wood wasp's ovipositor was proposed: dual-reciprocating drilling. Even though the principle was demonstrated thanks to a first prototype, further work was needed to determine the mechanisms used by DRD to progress in granular mediums like regolith and to identify the main parameters driving DRD performance. To do so a DRD test bench was designed and was presented in this paper. A series of 16 experiments were planned and analysed using design of experiment techniques. This allowed authors to identify the parameters affecting DRD performance and requirements. The main finding of this analysis is the importance of the interaction between parameters. However, because of the high dispersion inherent to any drilling experiment, it is necessary to repeat the 16 experiments to gain higher confidence in the conclusions of this work. Future work includes repeating experiments to take into account dispersion of results; exploring the influence of the other parameters that were held constant during this series of experiments; focusing on the driving parameters and interactions thanks to dedicated experiments; proposing numerical and analytical models of system and; enhancing DRD test bench (reduce mass for instance). Such research efforts would then lead to a series of laws and models allowing engineers to propose an optimised space-qualified DRD.

## Acknowledgments

The authors would like to thank the European Space Agency for fostering their cooperation and research thanks to its Networking and Partnership Initiative. They also thank the French Ministry of Research for funding PhD students.

## 8. References

- Azar, J. & Samuel, G. (2007). *Drilling engineering*, Pennwell Corp.
- Brunskill, C. & Vaios, L. (2009). The effect of soil density on microrover trafficability under low ground pressure conditions, *11th European Regional Conference of the International Society for Terrain-Vehicle Systems*.

- Bui, H., Kobayashi, T., Fukagawa, R. & Wells, J. (2009). Numerical and experimental studies of gravity effect on the mechanism of lunar excavations, *Journal of Terramechanics* .
- Directorate, N. S. M. (2006). Solar system exploration.
- El Shafie, A., Ulrich, R. & Roe, L. (2009). Penetration Forces for Subsurface Regolith Probes, *40th Lunar and Planetary Science Conference, March 23-27, 2009, The Woodlands, Texas, USA*.
- Frasson, L., Parittotokkaporn, T., Davies, B. & Rodriguez y Baena, F. (2008). Early developments of a novel smart actuator inspired by nature, *Mechatronics and Machine Vision in Practice, 2008. M2VIP 2008. 15th International Conference on*, pp. 163–168.
- Frasson, L., Parittotokkaporn, T., Schneider, A., Davies, B., Vincent, J., Huq, S., Degenaar, P. & Baena, F. R. (2008). Biologically inspired microtexturing: Investigation into the surface topography of next-generation neurosurgical probes, *Engineering in Medicine and Biology Society, 2008. EMBS 2008. 30th Annual International Conference of the IEEE*, pp. 5611–5614.
- Gao, Y., Ellery, A., Jaddou, M., Vincent, J. & Eckersley, S. (2005). A novel penetration system for in situ astrobiological studies, *International Journal of Advanced Robotic Systems* 2(4): 281–286.
- Gao, Y., Ellery, A., Jaddou, M., Vincent, J. & Eckersley, S. (2007). Planetary micro-penetrator concept study with biomimetic drill and sampler design, *IEEE Transactions on Aerospace and Electronic Systems* 43(3): 875–885.
- Gao, Y., Ellery, A., Sweeting, M. & Vincent, J. (2007). Bioinspired Drill for Planetary Sampling: Literature Survey, Conceptual Design, and Feasibility Study, *Journal of Spacecraft and Rockets* 44(3): 703–709.
- Gao, Y., Phipps, A., Taylor, M., Clemmet, J., Parker, D., Crawford, I., Ball, A., Wilson, L., Curiel, A., Davies, P. et al. (2007). UK lunar science missions: MoonLITE & moonraker, *Proc. DGLR Int. Symposium To Moon and Beyond, Bremen, Germany*.
- Gao, Y., Phipps, A., Taylor, M., Crawford, I., Ball, A., Wilson, L., Parker, D., Sweeting, M., da Silva Curiel, A., Davies, P. et al. (2007). Lunar science with affordable small spacecraft technologies: MoonLITE and Moonraker, *Planetary and Space Science* .
- Gouache, T., Gao, Y., Coste, P. & Gourinat, Y. (2009a). Experimental Parametric Evaluation of Dual-Reciprocating-Drilling Mechanism Performance, *Proceedings of the 11th European Conference on Spacecraft Structures, Materials and Mechanical Testing, Toulouse, France*.
- Gouache, T., Gao, Y., Coste, P. & Gourinat, Y. (2009b). Experimental Study of Dual-Reciprocating-Drilling Mechanism using Design of Experiment Approach, *Proceedings of the 13th European Space Mechanisms and Tribology Symposium, Vienna, Austria*.
- Gowen, R., Smith, A., Crawford, I., Ball, A., Barber, S., Church, P., Gao, Y., Griffiths, A., Hagermann, A., Pike, W. et al. (2008). An update on the MoonLite lunar mission, *Geophysical Research Abstracts*, Vol. 10, pp. 1607–7962.
- Heiken, G., Vaniman, D. & French, B. (1991). *Lunar sourcebook: A user's guide to the Moon*, Cambridge University Press.
- Komle, N., Hiłtner, E., Kargl, G., Ju, H., Gao, Y. & Grygorczuk, J. (2008). Development of Thermal Sensors and Drilling Systems for Application on Lunar Lander Missions, *Earth, Moon, and Planets* 103(3): 119–141.
- Komle, N., Kaufmann, E., Kargl, G., Gao, Y. & Rui, X. (2008). Development of thermal sensors and drilling systems for lunar and planetary regoliths, *Advances in Space Research* 42(2): 363–368.

- Menon, C., Vincent, J., Lan, N., Bilhaut, L., Ellery, A., Gao, Y., Zangani, D., Carosio, S., Manning, C., Jaddou, M. et al. (n.d.). Bio-inspired micro-drills for future planetary exploration, *Proceedings of CANEUS, August 27 - September 1, 2006, Toulouse, FRANCE* 20: 21.
- (MEPAG), M. E. P. A. G. (2006). Mars Scientific Goals, Objectives, Investigations, and Priorities: 2006.  
URL: <http://mepag.jpl.nasa.gov/reports/index.html>
- Montgomery, D. (2009). *Design and analysis of experiments.*, John Wiley & Sons New York.
- Myrick, T., Chau, J., Carlson, L. et al. (2004). The RAT as a rock physical properties tool, *Proceedings of AIAA Space 2004 Conference and Exhibit/AIAA*, Vol. 6096, pp. 1–11.
- O'Neil, W. & Cazaux, C. (2000). The Mars sample return project, *Acta Astronautica* 47(2-9): 453–465.
- Parittotokkaporn, T., Frasson, L., Schneider, A., Huq, S., Davies, B. L., Degenaar, P., Biesenack, J. & Rodriguez y Baena, F. M. (2009). Soft tissue traversal with zero net force: Feasibility study of a biologically inspired design based on reciprocal motion, *Robotics and Biomimetics, 2008. ROBIO 2008. IEEE International Conference on*, pp. 80–85.
- Peter Thomas, M. P. L. (2009). Ultrasonic Drill Tool (UDT) & Rock Abrasion Tool (RAT), *Mechanisms Final Presentation Days and Tribology Forum 2009*.
- Quicke, D., Leralec, A. & Vilhelmsen, L. (1999). Ovipositor structure and function in the parasitic hymenoptera with an exploration of new hypotheses, *Atti dell'Accademia Nazionale Italiana di Entomologia* 47: 197–239.
- Rahman, M., Fitton, M. & Quicke, D. (1998). Ovipositor internal microsculpture in the Braconidae (Insecta, Hymenoptera), *Zoologica Scripta* 27(4): 319–332.
- Richter, L., Coste, P., Gromov, V. & Grzesik, A. (2004). The mole with sampling mechanism (MSM)–Technology development and payload of beagle 2 mars lander, *Proceedings, 8th ESA Workshop on Advanced Space Technologies for Robotics and Automation (ASTRA 2004), Noordwijk, The Netherlands, November*, pp. 2–4.
- Richter, L., Coste, P., Gromov, V., Kochan, H., Nadalini, R., Ng, T., Pinna, S., Richter, H. & Yung, K. (2002). Development and testing of subsurface sampling devices for the Beagle 2 lander, *Planetary and Space Science* 50(9): 903–913.
- Richter, L., Coste, P., Gromov, V., Kochan, H., Pinna, S. & Richter, H. (2001). Development of the “planetary underground tool” subsurface soil sampler for the Mars express “Beagle 2” lander, *Advances in Space Research* 28(8): 1225–1230.
- Schneider, A., Frasson, L., Parittotokkaporn, T., Rodriguez y Baena, F., Davies, B. & Huq, S. (2008). Microfabrication of Components for a Novel Biomimetic Neurological Endoscope, in S. Dimov & W. Menz (eds), *In: International Conference on Multi-Material Micro Manufacture, 4th, Cardiff, UK, September 9-11, 2008, Proceedings*, Whittles Publishing Ltd.
- Schneider, A., Frasson, L., Parittotokkaporn, T., Rodriguez y Baena, F., Davies, B. & Huq, S. (2009). Biomimetic microtexturing for neurosurgical probe surfaces to influence tribological characteristics during tissue penetration, *Microelectronic Engineering* .
- Scott, G. & Saaj, C. (2009). Measuring and Simulating the Effect of Variations in Soil Properties on Microrover Trafficability, *AIAA Space 2009 Conference and Exposition. Pasadena, CA, USA*.
- Seiferlin, K., Ehrenfreund, P., Garry, J., Gunderson, K., Hütter, E., Kargl, G., Maturilli, A. & Merrison, J. (2008). Simulating Martian regolith in the laboratory, *Planetary and Space Science* .

- Skelley, A., Scherer, J., Aubrey, A., Grover, W., Ivester, R., Ehrenfreund, P., Grunthner, F., Bada, J. & Mathies, R. (2005). Development and evaluation of a microdevice for amino acid biomarker detection and analysis on Mars, *Proceedings of the National Academy of Sciences* **102**(4): 1041–1046.
- Steltzner, A., Kipp, D., Chen, A., Burkhart, D., Guernsey, C., Mendeck, G., Mitcheltree, R., Powell, R., Rivellini, T., San Martin, M. et al. (2006). Mars Science Laboratory entry, descent, and landing system, *2006 IEEE Aerospace Conference*, p. 15.
- Van Winnendael, M., Gardini, B., Roumeas, R. & Vago, J. (2005). The ExoMars Mission of ESA's Aurora Programme, ASCE.
- Vincent, J. & King, M. (1995). The mechanism of drilling by wood wasp ovipositors, *Biomimetics (USA)*.
- Zacny, K., Quayle, M., McFadden, M., Neugebauer, A., Huang, K. & Cooper, G. (2002). A novel method for cuttings removal from holes during percussive drilling on Mars, *RASC-AL (Revolutionary Aerospace Systems Concepts-Academic Linkage): 2002 Advanced Concept Design Presentation*, p. 107-121.

IntechOpen



## **Biomimetics Learning from Nature**

Edited by Amitava Mukherjee

ISBN 978-953-307-025-4

Hard cover, 534 pages

**Publisher** InTech

**Published online** 01, March, 2010

**Published in print edition** March, 2010

Nature's evolution has led to the introduction of highly efficient biological mechanisms. Imitating these mechanisms offers an enormous potential for the improvement of our day to day life. Ideally, by bio-inspiration we can get a better view of nature's capability while studying its models and adapting it for our benefit. This book takes us into the interesting world of biomimetics and describes various arenas where the technology is applied. The 25 chapters covered in this book disclose recent advances and new ideas in promoting the mechanism and applications of biomimetics.

### **How to reference**

In order to correctly reference this scholarly work, feel free to copy and paste the following:

Thibault Gouache, Yang Gao, Yves Gourinat and Pierre Coste (2010). Wood Wasp Inspired Planetary and Earth Drill, Biomimetics Learning from Nature, Amitava Mukherjee (Ed.), ISBN: 978-953-307-025-4, InTech, Available from: <http://www.intechopen.com/books/biomimetics-learning-from-nature/wood-wasp-inspired-planetary-and-earth-drill>

**INTECH**  
open science | open minds

### **InTech Europe**

University Campus STeP Ri  
Slavka Krautzeka 83/A  
51000 Rijeka, Croatia  
Phone: +385 (51) 770 447  
Fax: +385 (51) 686 166  
[www.intechopen.com](http://www.intechopen.com)

### **InTech China**

Unit 405, Office Block, Hotel Equatorial Shanghai  
No.65, Yan An Road (West), Shanghai, 200040, China  
中国上海市延安西路65号上海国际贵都大饭店办公楼405单元  
Phone: +86-21-62489820  
Fax: +86-21-62489821

© 2010 The Author(s). Licensee IntechOpen. This chapter is distributed under the terms of the [Creative Commons Attribution-NonCommercial-ShareAlike-3.0 License](#), which permits use, distribution and reproduction for non-commercial purposes, provided the original is properly cited and derivative works building on this content are distributed under the same license.

IntechOpen

IntechOpen