



*To Have
or
Not To Have?*

OPEN DISCUSSION ABOUT
LIBRARY PUBLISHING
ADVISORY BOARDS



Ally Laird

Penn State

alaird@psu.edu

@allymlaird

- Publishing program begun in 2007
- Publisher of 14 open access journals, 6 bibliographies, and 2 monographs
- Board established 2015



Christine Fruin

Atla

cfruin@atla.com

@campuscopyright

- Publishing program begun in 2007
- Publisher of journals, monographs, proceedings, and reports
- Board established 2017



Lauren Collister

University of Pittsburgh

lbcollister@pitt.edu

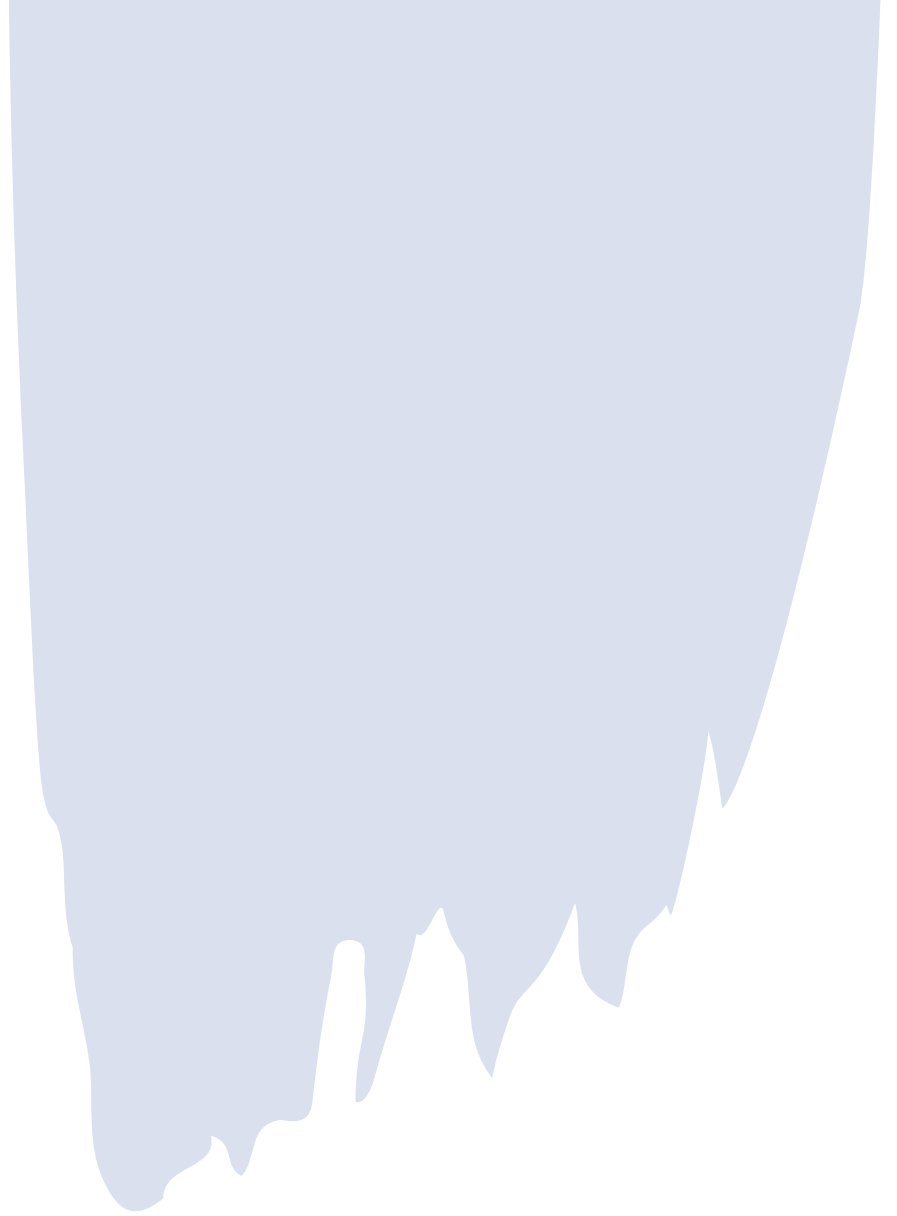
@parnopaeus

- Publishing program begun in 1999
- Publisher of 40+ open access journals
- Board established 2011

Slides: <http://d-scholarship.pitt.edu/38901>

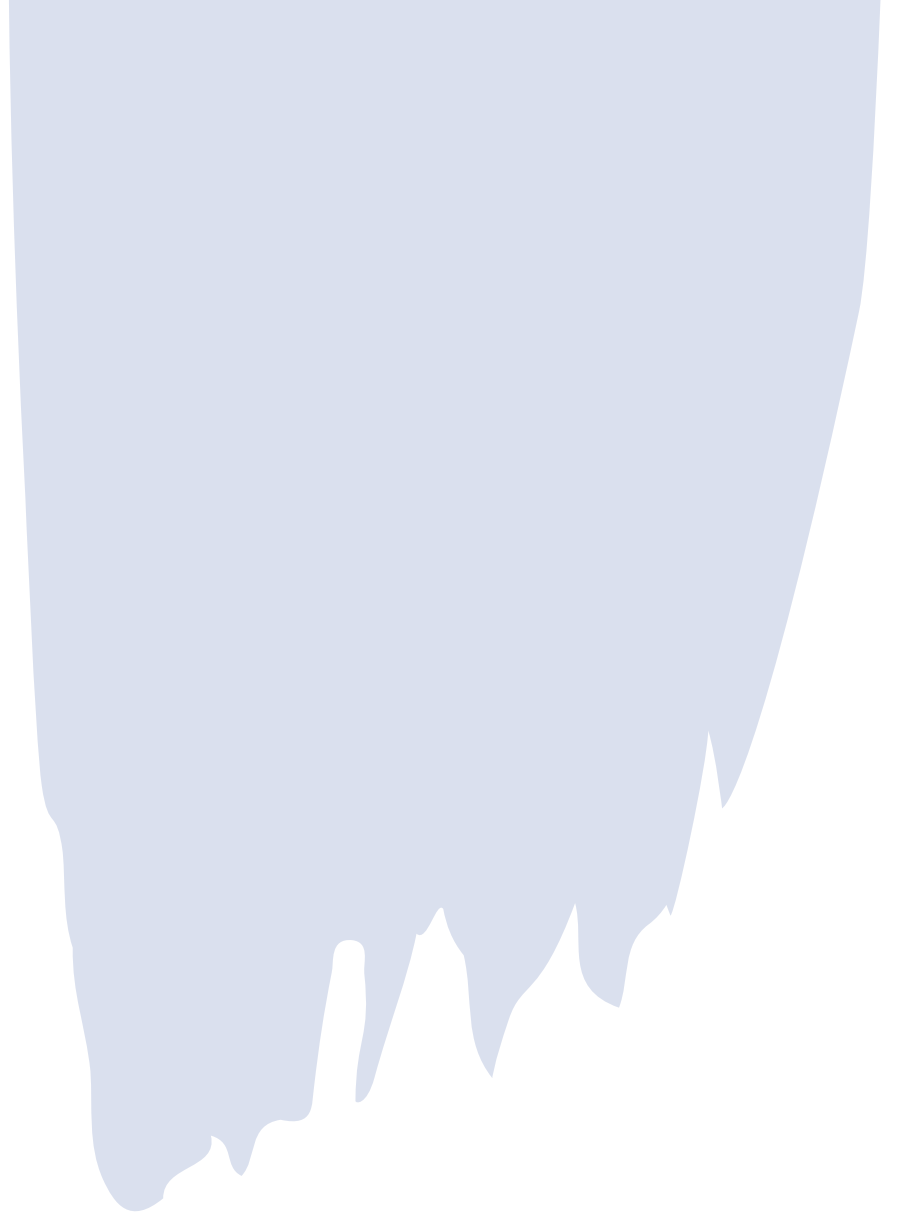
Poll

DO YOU HAVE A LIBRARY
PUBLISHING ADVISORY BOARD?



Question 1:

WHAT IS THE PURPOSE OF YOUR
PUBLICATION ADVISORY BOARD?



Penn State

- Provide input and oversight of the Penn State Libraries Open Publishing program
- Provide feedback and advice about the services offered by the program
- Provide feedback and vote on proposals submitted for publication
- Act as advocates for the program

Atla

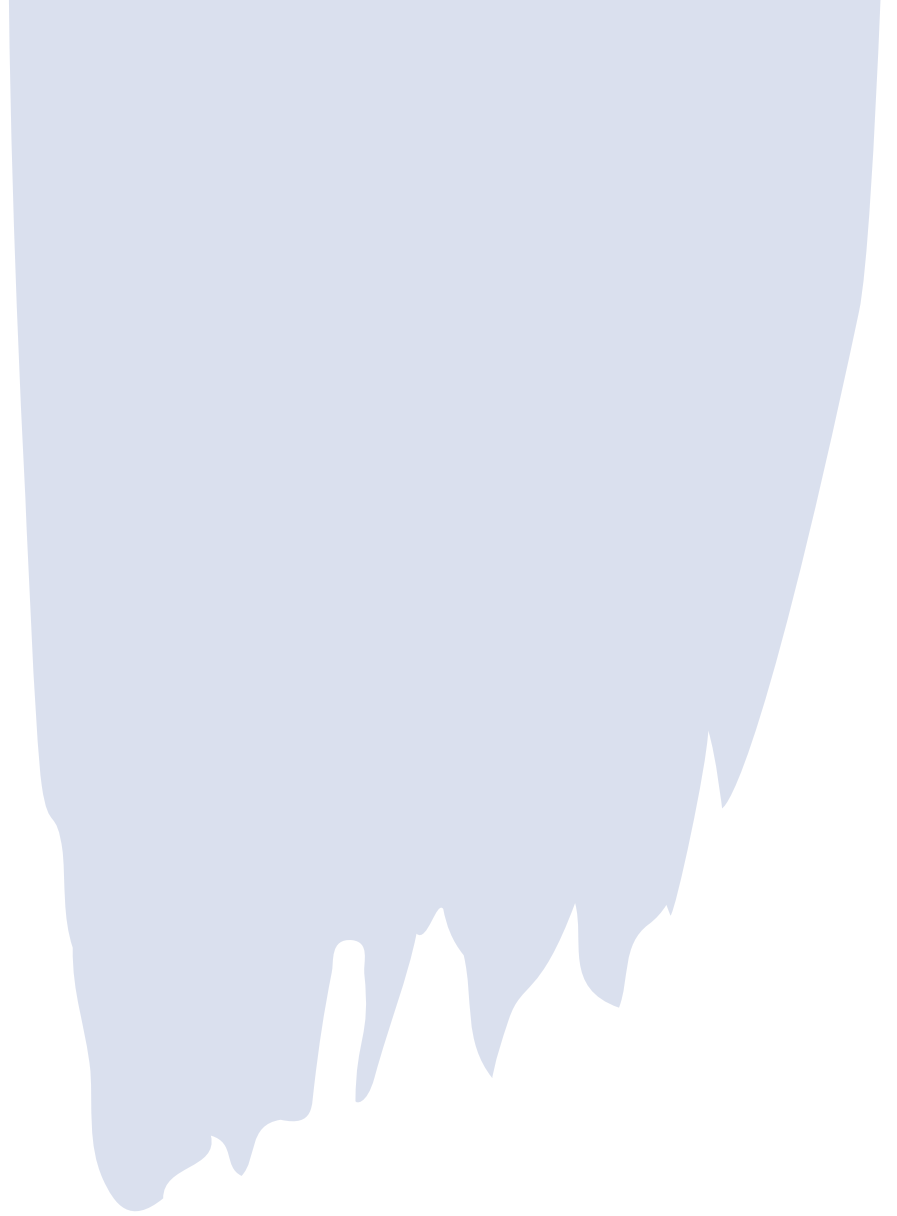
- Contribute expertise derived from local and external editorial responsibilities and scholarly activity
- Shape the strategic direction of the Atla Open Press

Pitt

- Provide strategic guidance and expertise for the ULS digital publishing program

Question 2:

WHAT IS THE COMPOSITION OF
YOUR PUBLICATION ADVISORY
BOARD?



Penn State: 5

- 2 librarians from PSU Commonwealth Campus libraries
- 1 librarian from another USA University (Florida State University)
- 1 librarian outside the USA (University of Cape Town, South Africa)
- Open Publishing Program Coordinator, PSU libraries, (ex-officio, non-voting member)

Atla: 6

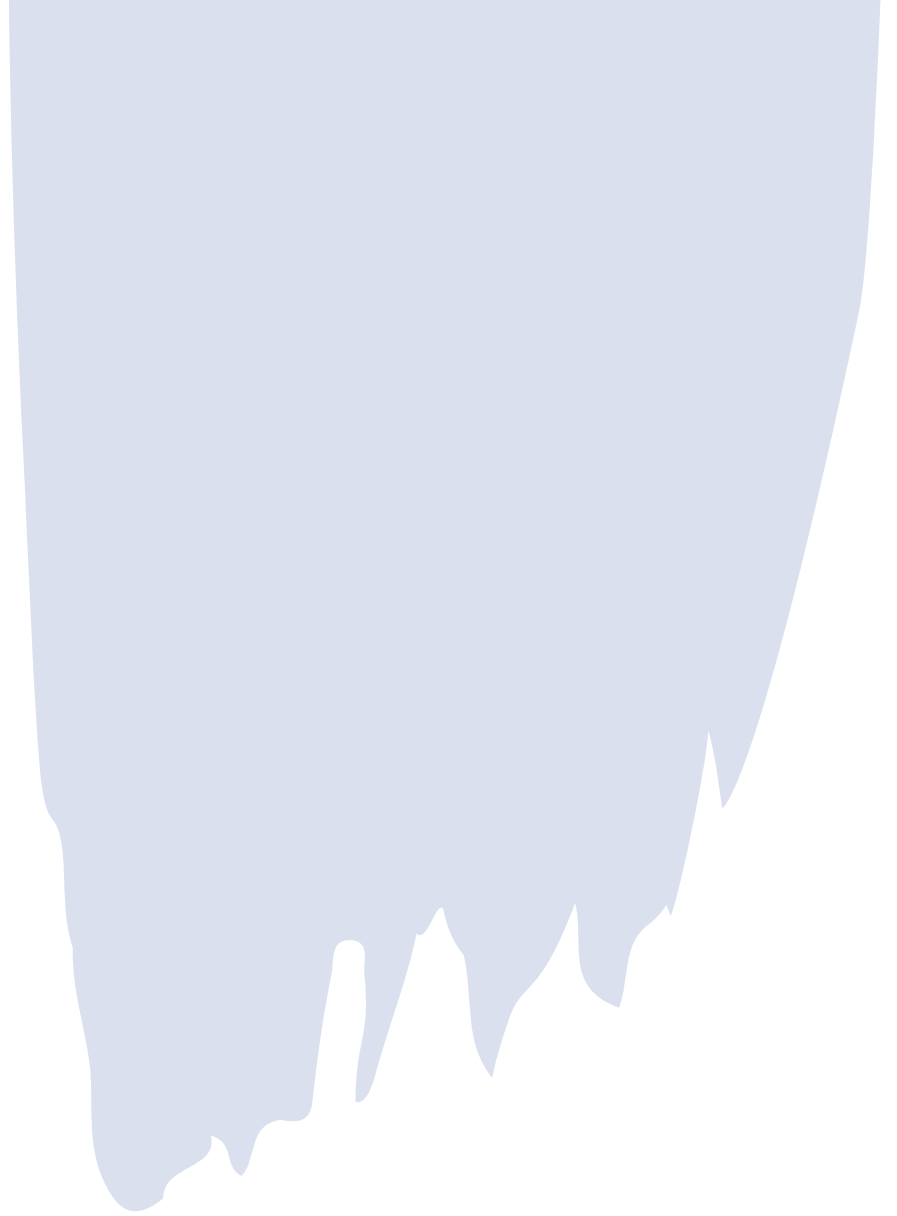
- 4 editors in chief of Atla's primary publications
 - 3-year terms linked to their appointment as EIC
- 2 at-large members
 - 1 member of Atla
 - 1 non-member who has expertise in open access publishing and/or scholarly communication
 - Appointed by Executive Director, serve 3-year terms

Pitt: ~11

- 3 University Library System representatives
 - Director of ULS
 - Associate University Librarian for Digital Scholarship and Creation
 - Director of Office of Scholarly Communication and Publishing
- Up to 8 appointed members
 - 4 from Pitt
 - 4 external, from library, publishing, and open access communities
 - Selected by ULS director, serve 3-year terms

Question 3:

WHAT ARE THE ACTIVITIES OF YOUR
PUBLICATION ADVISORY BOARD?



Penn State

- Meet bi-monthly about proposals
- Consultation with potential editors
- Provide input on new services
- Give feedback on external publishing partnerships
- Advocate for the program and open access publishing

Atla

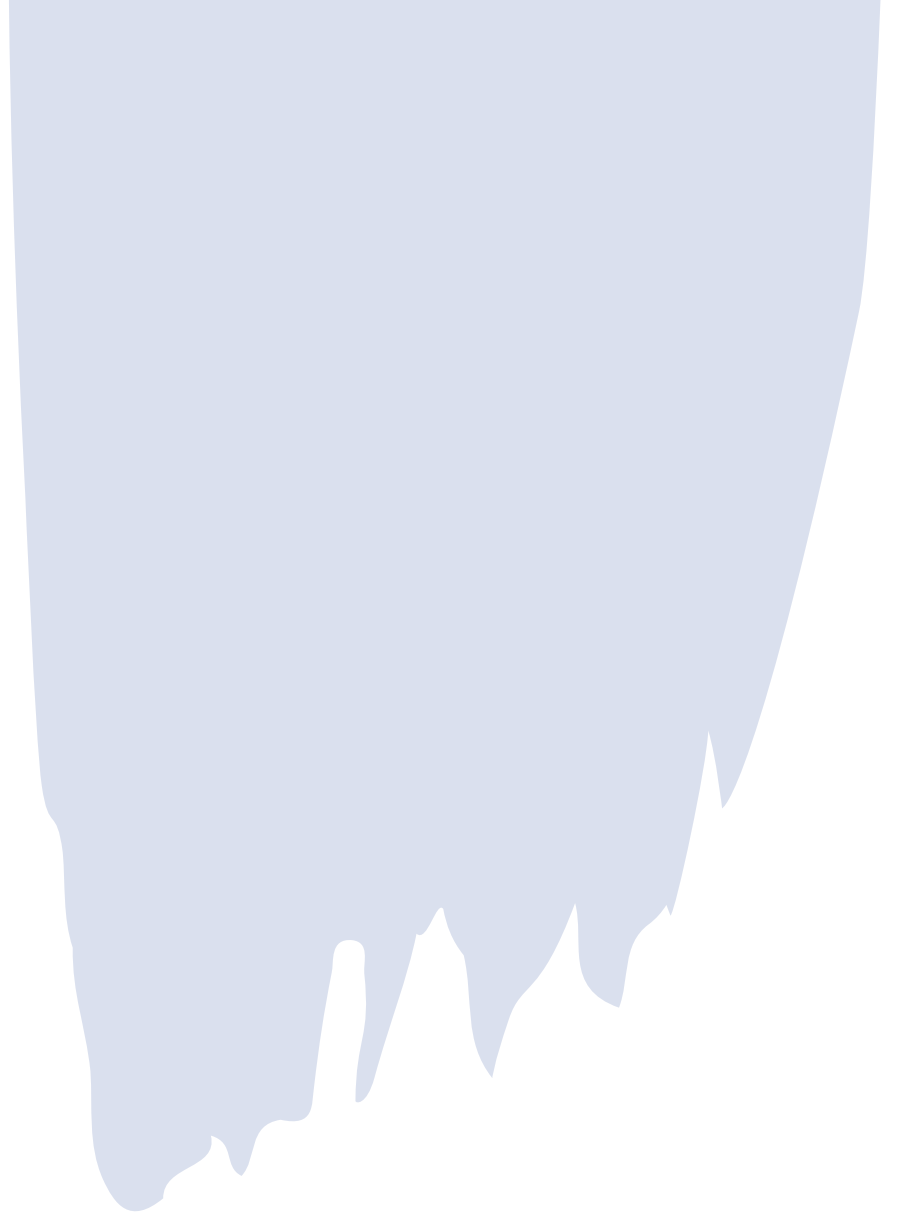
- Raise awareness about the merits and methods of open access publishing in the area of theology and religious studies
- Develop programmatic opportunities, promotion, and marketing
- Assess activities and outputs
- Facilitates collaboration and cohesion among Atla Open Press imprints.

Pitt

- Advise on strategic directions and partnerships for the program
- Assist in the development of program policies
- Support ongoing evaluation of the program and publishing partners
- Provide guidance on evaluation criteria for and selection of new titles and publishing partners

Question 4:

WHAT ARE THE PROS AND CONS
OF YOUR PUBLICATIONS
ADVISORY BOARD SETUP?



Penn State's View

Pros:

- Provides additional review before a publication is approved.
- Appeals to authors and editors.
- Credibility.
- More perspectives lead to better feedback and input.

Cons:

- “Pile on” problem in reviewing and accepting publications.
- Extra step to some decisions that should be easy to implement but demand a vote.
- Scheduling.

Atla's View

Pros

- Diversity of perspectives
- Collaboration and coordination of marketing, cross-promotion, and content recruitment across outputs of journals and books

Cons

- Scheduling
- Making sure each person has a voice
- Time and attention to review documents/make decisions -- would be simpler sometimes to just handle internally

Pitt's view

Pros

- Diversity of perspectives adds new views to our program and our publications
- Credibility
- Editorial experience – better feedback for our journal editors

Cons

- Engagement is often difficult
- Equity of voices and power dynamics internal vs. external
- “Pile on” problem

A blue brushstroke graphic with a textured, hand-painted appearance. The stroke is horizontal and tapers at both ends. In the center of the blue area, the words "Work Session" are written in a white, elegant script font.

Work Session

Applications for your programs

Do you have a board of your own?

- Share your answers to our questions in the open Google doc.
 - [Advisory Board Info Sharing](#)
- Let us know if we can publicly share this info in a report, article, etc.
- Share your experiences in chat for discussion

Thinking about creating a board?

- Make a copy of our template to think through your program and the potential board setups that would work for you.
 - [Advisory Board Worksheet](#)
- Share questions, feedback, etc. in chat for discussion

Discussion

Consider questions about pros and cons of publishing boards. What are the things you'd want to know from your peers about Advisory Boards?

Do you have experiences to share? We can unmute you – raise your hand to speak. If you don't want to speak, feel free to share in Chat

- If you have a question, ask in the Q&A box.
- If you'd like to speak, raise your hand in Zoom.
- Discuss and share with your colleagues in the chat box.

Thank you for attending!
Slides: <http://d-scholarship.pitt.edu/38901>

Here is our contact information again:



Ally Laird
Penn State University
alaird@psu.edu
[@allymlaird](#)



Christine Fruin
Atla
cfruin@atla.com
[@campuscopyright](#)



Lauren B. Collister
University of Pittsburgh
lbcollister@pitt.edu
[@parnopaeus](#)