

Journal Pre-proof

Outcome of Coronavirus spectrum infections (SARS, MERS, COVID 1 -19) during pregnancy: a systematic review and meta-analysis

Daniele Di Mascio, Asma Khalil, Gabriele Saccone, Giuseppe Rizzo, Danilo Buca, Marco Liberati, Jacopo Vecchiet, Luigi Nappi, Giovanni Scambia, Vincenzo Berghella, Francesco D'Antonio

PII: S2589-9333(20)30037-9

DOI: <https://doi.org/10.1016/j.ajogmf.2020.100107>

Reference: AJOGMF 100107

To appear in: *American Journal of Obstetrics & Gynecology MFM*



Please cite this article as: Di Mascio D, Khalil A, Saccone G, Rizzo G, Buca D, Liberati M, Vecchiet J, Nappi L, Scambia G, Berghella V, D'Antonio F, Outcome of Coronavirus spectrum infections (SARS, MERS, COVID 1 -19) during pregnancy: a systematic review and meta-analysis, *American Journal of Obstetrics & Gynecology MFM* (2020), doi: <https://doi.org/10.1016/j.ajogmf.2020.100107>.

This is a PDF file of an article that has undergone enhancements after acceptance, such as the addition of a cover page and metadata, and formatting for readability, but it is not yet the definitive version of record. This version will undergo additional copyediting, typesetting and review before it is published in its final form, but we are providing this version to give early visibility of the article. Please note that, during the production process, errors may be discovered which could affect the content, and all legal disclaimers that apply to the journal pertain.

© 2020 Elsevier Inc. All rights reserved.

Title Page with Author Information

Outcome of Coronavirus spectrum infections (SARS, MERS, COVID 1 -19) during pregnancy:

2 a systematic review and meta-analysis

3 Daniele Di Mascio,¹ Asma Khalil,²⁻³ Gabriele Saccone,⁴ Giuseppe Rizzo,⁵⁻⁶ Danilo Buca,⁷ Marco Liberati,⁷

4 Jacopo Vecchiet,⁸ Luigi Nappi,⁹ Giovanni Scambia,¹⁰ Vincenzo Berghella,¹¹ Francesco D'Antonio⁹
5

6 1: Department of Maternal and Child Health and Urological Sciences, Sapienza University of Rome, Italy

7 2: Fetal Medicine Unit, Saint George's Hospital, London, United Kingdom

8 3: Vascular Biology Research Centre, Molecular and Clinical Sciences Research Institute, St George's
9 University of London, United Kingdom

10 4: Department of Neuroscience, Reproductive Sciences and Dentistry, School of Medicine, University
of

11 Naples Federico II, Naples, Italy

12 5: Division of Maternal and Fetal Medicine, Ospedale Cristo Re, University of Rome Tor Vergata,
Rome, Italy

13 6: Department of Obstetrics and Gynecology The First I.M. Sechenov Moscow State Medical
University

14 Moscow Russia

15 7: Centre for High Risk Pregnancy and Fetal Care, Department of Obstetrics and Gynecology,
University of

16 Chieti, Italy

17 8: Clinic of Infectious Diseases, Department of Medicine and Science of Aging, University 'G.
d'Annunzio'

18 Chieti-Pescara, Chieti, Italy

19 9: Department of Obstetrics and Gynecology, Department of Medical and Surgical Sciences,
University of

20 Foggia, Italy

21 10: Department of Obstetrics and Gynecology, Catholic University of the Sacred Heart, Fondazione
Policlinico

22 A. Gemelli, Rome, Italy

23 11: Division of Maternal-Fetal Medicine, Department of Obstetrics and Gynecology, Sidney Kimmel
Medical

24 College of Thomas Jefferson University, Philadelphia, USA

**Outcome of Coronavirus spectrum infections (SARS, MERS, COVID-19) during pregnancy:
a systematic review and meta-analysis**

1
2
3
4
5
6
7
8
9
10
11
12
13
14
15
16
17
18
19
20
21
22
23
24
25
26
27
28

Journal Pre-proof

29 **Disclosure:** The authors report no conflict of interest

30

31 **Financial Support:** No financial support was received for this study

32

33 **Condensation:** Pregnancy in the setting of COVID-19 disease secondary to SARS-COV-2
34 infection is associated with higher rates of miscarriage, preterm birth, preeclampsia, cesarean and
35 perinatal death. There were no reported cases of vertical transmission.

36

37 **Short title:** Coronavirus infections in pregnancy

38

39

40 **AJOG AT A GLANCE**

41

42 **A. Why was this study published?**

43 COVID-19 disease secondary to SARS-COV-2 infection is a worldwide pandemic with an
44 increasing number of confirmed cases everyday. Little is known about the effect of CoV
45 (coronavirus)-related infections during pregnancy.

46 **B. What are the key findings?**

47 **C.** Pregnancy in the setting of CoV infection is associated with higher rates of miscarriage,
48 preterm birth, preeclampsia, cesarean delivery and perinatal death (7-11%). There were no
49 reported cases of vertical transmission.

50 **D. What does this study add to what is already known?**

51 This is the first systematic review exploring pregnancy and perinatal outcomes of CoV
52 infections occurring during pregnancy. Although limited, these data can guide and enhance
53 prenatal counselling of women with COVID-19 infection occurring during pregnancy.
54 Evidence is accumulating rapidly, so these data may need to be updated soon.

55

56

57

58 **ABSTRACT**

59 **Objective:** The aim of this systematic review was to report pregnancy and perinatal outcomes of
60 Coronavirus (CoV) spectrum infections, and particularly COVID-19 disease due to SARS-COV-2
61 infection during pregnancy.

62 **Data sources:** Medline, Embase, Cinahl and Clinicaltrials.gov databases were searched
63 electronically utilizing combinations of word variants for “coronavirus” or “severe acute respiratory
64 syndrome” or “SARS” or “Middle East respiratory syndrome” or “MERS” or “COVID-19” and
65 “pregnancy”. The search and selection criteria were restricted to English language.

66 **Study eligibility criteria:** Inclusion criteria were pregnant women with a confirmed Coronavirus
67 related illness, defined as either SARS, MERS or COVID-19.

68 **Study appraisal and synthesis methods:** We used meta-analyses of proportions to combine data
69 and reported pooled proportions. The pregnancy outcomes observed included miscarriage, preterm
70 birth, pre-eclampsia, preterm prelabor rupture of membranes, fetal growth restriction, and mode of
71 delivery. The perinatal outcomes observed were fetal distress, Apgar score < 7 at five minutes,
72 neonatal asphyxia, admission to neonatal intensive care unit, perinatal death, and evidence of
73 vertical transmission.

74 **Results:** 19 studies including 79 women were eligible for this systematic review: 41 pregnancies
75 (51.9%) affected by COVID-19, 12 (15.2%) by MERS, and 26 (32.9%) by SARS. An overt
76 diagnosis of pneumonia was made in 91.8% and the most common symptoms were fever (82.6%),
77 cough (57.1%) and dyspnea (27.0%). For all CoV infections, the rate of miscarriage was 39.1%
78 (95% CI 20.2-59.8); the rate of preterm birth < 37 weeks was 24.3% (95% CI 12.5-38.6); premature
79 prelabor rupture of membranes occurred in 20.7% (95% CI 9.5-34.9), preeclampsia in 16.2% (95%
80 CI 4.2-34.1), and fetal growth restriction in 11.7% (95% CI 3.2-24.4); 84% were delivered by
81 cesarean; the rate of perinatal death was 11.1% (95% CI 84.8-19.6) and 57.2% (95% CI 3.6-99.8) of
82 newborns were admitted to the neonatal intensive care unit. When focusing on COVID-19, the most
83 common adverse pregnancy outcome was preterm birth < 37 weeks, occurring in 41.1% (95% CI

84 25.6-57.6) of cases, while the rate of perinatal death was 7.0% (95% CI 1.4-16.3). None of the 41
85 newborns assessed showed clinical signs of vertical transmission.

86 **Conclusion:** In mothers infected with coronavirus infections, including COVID-19, >90% of whom
87 also had pneumonia, PTB is the most common adverse pregnancy outcome. Miscarriage,
88 preeclampsia, cesarean, and perinatal death (7-11%) were also more common than in the general
89 population. There have been no published cases of clinical evidence of vertical transmission.
90 Evidence is accumulating rapidly, so these data may need to be updated soon. The findings from
91 this study can guide and enhance prenatal counseling of women with COVID-19 infection
92 occurring during pregnancy.

93

94 **Keywords:** Coronavirus; SARS; MERS; COVID-19; SARS-COV-2; infection; pregnancy

95

96

97

98 INTRODUCTION

99 Coronavirus (CoV) is an enveloped, positive-stranded ribonucleic acid (RNA) virus of the family of
100 Coronaviridae and belonging to the Nidovirales order,¹ generally causing respiratory and
101 gastrointestinal infections that might range from mild, self-limiting conditions to more serious
102 disorders, such as viral pneumonia with systemic impairment.²

103 In the last two decades, CoV has been responsible for two large epidemics: the Severe Acute
104 Respiratory Syndrome (SARS) that infected 8098 people with a case-fatality rate of about 10.5%,³
105 and the Middle East Respiratory Syndrome (MERS) with a total of 2519 laboratory-confirmed
106 cases and a case-fatality rate of 34.4%.⁴

107 Towards the end of 2019, a novel mutation of CoV (labelled as SARS-COV-2) was identified as the
108 cause of a severe respiratory illness – called COVID-19 - that typically presents with fever and
109 cough.⁵ Infected people show abnormal findings at diagnostic imaging, suggestive for pneumonia.

110 After beginning as an epidemic in China, COVID-19 infection has rapidly spread in many other
111 countries and the number of affected cases continues to increase significantly on a daily basis. The
112 overall mortality rate ranges from 3% to 4% according to the World Health Organization reports,⁶
113 but a higher rate of patients require admission to the intensive care unit (ICU).⁷

114 It is well known that physiologic maternal adaptations to pregnancy predispose pregnant women to
115 a more severe course of pneumonia, with subsequent higher maternal and fetal morbidity and
116 mortality,^{1,8} but there is a lack of data in the literature about the effect of CoV infections during
117 pregnancy, thus limiting both counseling and management of these patients.

118 Objective

119 The aim of this systematic review was to report pregnancy and perinatal outcomes of CoV spectrum
120 infections and particularly COVID-19 during pregnancy.

121

122

123 **METHODS**124 *Search strategy and selection criteria*

125 This review was performed according to a priori designed protocol recommended for systematic
126 reviews and meta-analysis.⁹⁻¹¹ Medline, Embase, Cinahl and Clinicaltrials.gov databases were
127 searched electronically on 03/13/2020, utilizing combinations of the relevant medical subject
128 heading (MeSH) terms, key words, and word variants for “coronavirus” or “severe acute respiratory
129 syndrome” or “SARS” or “Middle East respiratory syndrome” or “MERS” or “COVID-19” and
130 “pregnancy”. The search and selection criteria were restricted to English language. Reference lists
131 of relevant articles and reviews were hand searched for additional reports. PRISMA and MOOSE
132 guidelines were followed.¹²⁻¹⁴

133 Inclusion criteria were pregnant women with a confirmed Coronavirus spectrum illness, defined as
134 either SARS, MERS or COVID-19 infection.

135 The pregnancy outcomes observed were:

- 136 • Preterm birth (PTB) (either before 37 or 34 weeks of gestation)
- 137 • Pre-eclampsia (PE)
- 138 • Preterm prelabor rupture of membranes (pPROM)
- 139 • Fetal growth restriction (FGR)
- 140 • Miscarriage, as defined by authors
- 141 • Cesarean mode of delivery

142 The perinatal outcomes observed were:

- 143 • Fetal distress (as defined by original authors)
- 144 • Apgar score < 7 at five minutes
- 145 • Neonatal asphyxia (as defined by original authors)
- 146 • Admission to neonatal intensive care unit (NICU)
- 147 • Perinatal death, including both stillbirth and neonatal death

- Evidence of vertical transmission, defined as the presence of clinical signs of mother-to-child transmission in the antenatal or perinatal period

150

151 Furthermore, we aimed to perform a sub-group analysis according to the trimester of pregnancy at
152 infection and the type of Coronavirus.

153 Data from studies reporting the incidence of these outcomes in pregnancies with CoV spectrum
154 infections were considered eligible for analysis. For the purpose of the analysis, we included only
155 full-text articles with data of pregnant women who already delivered; we excluded data regarding
156 on-going pregnancies. Furthermore, as these are relatively rare infections occurring during
157 pregnancy with the majority of data coming from studies with small sample sizes, case reports and
158 case series were also included in the analysis. Studies reporting cases of infective pneumonia or
159 other respiratory disorders during pregnancy caused by other viral agents were excluded. We also
160 excluded studies pediatric series on newborns and children from which maternal and pregnancy
161 information could not be extrapolated.

162 Two authors (DDM, GS) reviewed all abstracts independently. Agreement regarding potential
163 relevance or inconsistencies was reached by consensus or resolved by discussion with a third
164 reviewer (FDA). Full text copies of applicable papers were obtained, and the same reviewers
165 independently extracted relevant data regarding study characteristics and pregnancy outcome. If
166 more than one study was published on the same cohort with identical endpoints, the report
167 containing the most comprehensive information on the population was included to avoid
168 overlapping populations.

169

170 *Data analysis*

171 We used meta-analyses of proportions to combine data and reported pooled proportions (PP).
172 Funnel plots (displaying the outcome rate from individual studies versus their precision (1 per SE))
173 were carried out with an exploratory aim. Tests for funnel plot asymmetry were not used when the

174 total number of publications included for each outcome was <10. In this case, the power of the tests
175 is too low to distinguish chance from real asymmetry.

176 Between-study heterogeneity was explored using the I^2 statistic, which represents the percentage of
177 between-study variation that is due to heterogeneity rather than chance. A value of 0% indicates no
178 observed heterogeneity, whereas I^2 values $\geq 50\%$ indicate a substantial level of heterogeneity. A
179 random effect model was used to compute the pooled data analyses. All proportion meta-analyses
180 were carried out by using StatsDirect version 2.7.9 (StatsDirect, Ltd, Altrincham, Cheshire, United
181 Kingdom).

182 Quality assessment of the included studies was assessed using the methodological quality and
183 synthesis of case series and case reports described by Murad et al.¹⁵ According to this tool, each
184 study is judged on four broad perspectives: the selection of the study groups, the ascertainment and
185 the causality of the outcome observed, and the reporting of the case. A study can be awarded a
186 maximum of one star for each numbered item within the Selection and Reporting categories, two
187 stars for Ascertainment and four stars for Comparability.¹⁵ Given emergency-need for this
188 guidance, PROSPERO registration was not sought.

189

190 **RESULTS**

191 *Study selection and characteristics*

192 538 articles were identified, 27 were assessed with respect to their eligibility for inclusion and 19
193 studies were included in the systematic review (Table 1, Figure 1, Supplementary Table 1).

194 These 19 studies¹⁶⁻³⁴ included 79 pregnancies affected by CoV infections. The mean maternal age
195 was 34.6. Out of the 79 pregnancies affected by CoV infections: 41 (51.9%) were affected by
196 COVID-19, 12 (15.2%) by MERS and 26 (32.9%) by SARS.

197 Clinical symptoms and laboratory parameters in the overall population of pregnant with CoV
198 infections are reported in Table 2. An overt diagnosis of pneumonia was made in 91.8% (54/57) of
199 cases (when available, radiological findings suggestive for pneumonia are reported in

200 Supplementary Table 2). The most common symptom was fever that affected 82.6% (64/76) of
201 women, followed by cough (57.1%, 44/77) and dyspnea (27%, 21/77). Lymphopenia and elevated
202 liver enzymes were found in 79.8% (40/48) and 36.6% (9/26) of cases, respectively. 34.1% (22/70)
203 of pregnant women affected by CoV infections were admitted to ICU and 26.3% (16/69) required
204 mechanical ventilation. Maternal death occurred in 12.3% (9/79) of all reported CoV-related
205 diseases cases. Of note, the rates of admission to ICU (9.3% vs 44.6% vs 53.3%), need for
206 mechanical ventilation (5.4% vs 40.9% vs 40%) and maternal death (0% vs 28.6% vs 25.8%) were
207 significantly lower in pregnancies affected by COVID-19, compared to MERS and SARS
208 respectively (Supplementary Table 3).

209 The majority of women affected by CoV infections were usually treated first with broad spectrum
210 antibiotics in 89.3% of cases (49/52) and then with antiviral therapy and steroids in 67.7% (37/51)
211 and 29.8% (12/31) of cases (Table 3; Supplementary Table 4).

212 The results of the quality assessment of the included studies are presented in Supplementary
213 Table 5.

214 *Synthesis of the results*

216 In the overall population of pregnancies infected with CoV, The rate of miscarriage for CoV
217 infections was 39.1% (8/21 – 95% CI 20.2-59.8). The rates of PTB < 37 and 34 weeks of gestation
218 were 24.3% (14/56 – 95% CI 12.5-38.6) and 21.8% (11/56 - 95% CI 12.5-32.9), respectively;
219 pPROM occurred in 20.7% (6/34 – 95% CI 9.5-34.9), while the rate of pregnancies experiencing
220 PE and FGR was 16.2% (2/19 – 95% CI 4.2-34.1) and 11.7% (2/29 – 95% CI 3.2-24.4),
221 respectively. The rate of CD was 83.9% (50/58 – 95% CI 73.8-91.9) (Table 4; Table 5). The rate of
222 perinatal death was 11.1% (5/60 – 95% CI 4.8-19.6) including three stillbirths and two neonatal
223 deaths (further details are provided in Supplementary Table 6). Thirty-four point six percent (15/44
224 – 95% CI 20.3-49.5) of fetuses suffered from fetal distress and 57.2% (3/12 – 95% CI 3.6-99.8) of
225 newborns was admitted to NICU. The rate of Apgar score < 7 at five minutes was 6.1% (1/48 –

226 95% CI 1.3-13.9), but no case of neonatal asphyxia were reported. Finally, none of the newborns
227 showed signs of vertical transmission during the follow-up period (Table 6; Table 7).

228 **COVID-19**

229 Six studies¹⁶⁻²¹ reported information on COVID-19 infection during pregnancy. There was no data
230 on miscarriage for COVID-19 infection occurring during the first trimester. The rates of PTB < 37
231 and 34 weeks of gestation were 41.1% (14/32 – 95% CI 25.6-57.6) and 15% (4/32 - 95% CI 3.9-
232 31.7), respectively. pPROM occurred in 18.8% (5/31 – 95% CI 0.8-33.5), while the rate of
233 pregnancies experiencing PE was 13.6% (1/12 – 95% CI 1.2-36.0), with no reported cases of FGR.
234 The rate of CD was 91% (38/41 – 95% CI 81.0-97.6) (Table 5). The rate of perinatal death was 7%
235 (2/41 – 95% CI 1.4-16.3) including one stillbirth and one neonatal death; 43% (12/30 – 95% CI
236 15.3-73.4) of fetuses had fetal distress and 8.7% (1/10 – 95% CI 0.01-31.4) of newborns were
237 admitted to NICU. The rate of Apgar score < 7 at five minutes was 4.5% (1/41 – 95% CI 0.4-12.6)
238 and no case of neonatal asphyxia was reported. Finally, none of the newborns showed signs of
239 vertical transmission during the follow-up period (Table 7).

240

241 **MERS**

242 Seven studies²²⁻²⁸ reported information on MERS infection during pregnancy. There was no data on
243 miscarriage for MERS infection occurring during the first trimester. The rate of PTB was 32.1%
244 (3/11 - 95% CI 10.0-59.8), all occurring before 34 weeks of gestation. Preeclampsia occurred in
245 19.1% (1/7 – 95% CI 1.1-51.3) respectively, while no case of pPROM or FGR was reported in these
246 studies. The rate of CD was 61.8% (5/8 – 95% CI 32.7-86.9) (Table 5). The rate of perinatal death
247 was 33.2% (3/10 – 95% CI 11.2-59.9) including two stillbirths and one neonatal death (four hours
248 after birth of an extremely preterm infant). No case of fetal distress, Apgar score < 7 at five
249 minutes, neonatal asphyxia, and admission to NICU was reported. Finally, none of the newborns
250 showed signs of vertical transmission during the follow-up period (Table 7).

251

252 **SARS**

253 Six studies²⁹⁻³⁴ reported information on SARS infection during pregnancy. The rate of miscarriage
254 for MERS infection was 39.1% (8/21 - 95% CI 20.2-59.8). The rate of PTB < 37 and 34 weeks of
255 gestation was 15% (1/15 - 95% CI 0.3-45.6) and 28.9% (4/15 - 95% CI 10.7-51.6), respectively.
256 pPROM and FGR occurred in 50% (1/2 - 95% CI 0.5-95.3) and 18.5% (2/15 - 95% CI 4.4-39.5)
257 respectively, while no cases of preeclampsia were reported. The rate of CD was 72.2% (7/9 - 95%
258 CI 44.1-93.1) (Table 5). Fetal distress occurred in 35.9% (3/9 - 95% CI 12.0-64.4) of pregnancies,
259 while no case of perinatal death, Apgar score < 7 at five minutes, and neonatal asphyxia was
260 reported. There were no data on rates of admission to the NICU of infants born to infected mothers.
261 Finally, none of the newborns showed signs of vertical transmission during the follow-up period
262 (Table 7).

263

264 It was not possible to perform a comprehensive pooled data synthesis on the incidence of pregnancy
265 and perinatal outcomes according to the trimester of pregnancy at infection due to the very small
266 number of included studies for each trimester of pregnancy.

267

268 **COMMENT**269 ***Main findings***

270 The findings from this systematic review show that more than 90% of hospitalized pregnant women
271 affected by CoV infections present radiological signs suggestive for pneumonia, detected either at
272 chest x-ray or computerized tomography and the most common symptoms are fever, cough and
273 lymphopenia. Pregnancies affected by CoV infections have high rates of PTB before 37 and 34
274 weeks, and miscarriage when the infection is acquired earlier in pregnancy. Preeclampsia and
275 cesarean delivery are also more common than in the general population. The rate of perinatal
276 mortality is about 10%, while the most common adverse perinatal outcome is fetal distress, with
277 more than half of the newborns admitted in NICU. Importantly, clinical evidence of vertical
278 transmission was found in none of the newborns included.

279

280 ***Strengths and limitations***

281 To the best of our knowledge, this is the first systematic review exploring pregnancy and perinatal
282 outcomes of CoV infections occurring during pregnancy. This comprehensive meta-analysis
283 included all series published so far on this topic.

284 The small number of cases in some of the included studies, their retrospective non-randomized
285 design, and the lack of standardized criteria for the antenatal surveillance, management and timing
286 of delivery of pregnancies affected by CoV infections represent the major limitations of this
287 systematic review, thus making it difficult to draw any convincing evidence on this clinical
288 management strategies. Furthermore, there is a possibility that some patients were included in more
289 than one report, although two authors independently reviewed all the included studies, carefully
290 focusing on the different Institutions reporting outcomes. Moreover, when focusing on the
291 outcomes of COVID-19 infection, and particularly perinatal outcomes, reported data are intuitively
292 limited to a very short-term follow-up period and thus infectious that occurred proximate to the
293 delivery. This has the potential to overestimate the magnitude of risks such as PTB and

294 underestimate more longitudinal risks such as FGR. Additionally, it was not possible to extrapolate
295 data about the rate of both spontaneous and iatrogenic PTB and indications for CD, that was
296 performed in the majority of cases; furthermore, few outcomes, i.e. “fetal distress”, were not clearly
297 defined, thus leading to some discrepancies in the results, like the rate of PTB < 34 weeks (15%)
298 and the rate of newborns admitted to NICU (9%), particularly in COVID-19 infection. Another
299 limitation of the present review was the lack of stratification of the analysis according to the
300 gestational age at CoV infection due to the very small number of included studies for each trimester
301 of pregnancy. We cannot assume that the rate of miscarriage and PTB should be attributed solely to
302 the virus / infection, since there are no comparable control groups of uninfected women from the
303 same time. It may be that the stress of the situation in the community contributed to some of these
304 outcomes. Finally, we also included case reports and case series, thus facing a higher risk
305 publication bias and decreasing the level of the evidence of our findings.

306

307 ***Implications***

308 COVID-19 is the last CoV infection identified at the end of 2019 in Wuhan, a city in the Hubei
309 Province of China.⁵ Currently, Europe has become the epicenter of the COVID-19 pandemic,⁶ but
310 the infection has spread in more than 150 countries, leading governments to adopt rigorous
311 mitigation measures to reduce both the viral spread and its detrimental effects on healthcare systems
312 and therefore on the whole economy of the countries.³⁵

313 Despite the relatively low mortality, one of the main concerns related to COVID-19 infection is the
314 development of an acute respiratory distress syndrome, often requiring invasive ventilation, that is
315 the clinical epiphenomenon of the viral pneumonia.⁶⁻⁷

316 The lack of knowledge about COVID-19 infection has raised urgent questions among physicians
317 regarding clinical management and expected outcomes of the affected patients, and therefore, there
318 is currently a compelling need of data to guide clinical decisions.

319 Regarding pregnancy, the findings from this study found that radiological features suggestive for
320 pneumonia can be found in almost all of the hospitalized pregnant women, usually presenting with
321 fever, cough and lymphopenia similar to the non-pregnant population. Of note, serious conditions
322 requiring admission to ICU and mechanical ventilation are significantly less common when
323 compared with the two previous CoV infections (MERS and SARS). Similarly, we found no case of
324 maternal death related to COVID-19 infection, while MERS and SARS infections caused a
325 mortality rate in pregnant women ranging from 25% to 30%.

326 In this systematic review, women affected by COVID-19 disease had higher rates of miscarriage,
327 preterm birth, preeclampsia, while the babies had higher rates of perinatal mortality (7-11%) and of
328 admission to NICU.

329 Furthermore, as all the included studies reported data on hospitalized women, the reported rate of
330 infection-related adverse outcomes, including either pregnancy and perinatal outcomes, might not
331 reflect the overall population of pregnant when who got infected with SARS-COV-2, and there may
332 be a cohort of patients with no or mild symptoms whose pregnancy outcome is, as of yet,
333 unknown.³⁶

334 More importantly, it should be emphasized that there are no known neonatal symptoms and
335 therefore no clinical evidence suggestive for vertical transmission, particularly when COVID-19
336 infection occurs later in pregnancy. Unfortunately, the lack of data of first and early second
337 trimester infection does not allow to determine whether in this case the infection may cause more
338 severe perinatal outcomes and how to monitor the pregnancy once the infection has passed.¹

339 Based on the limited information from this study, COVID-19 cannot be considered as an indication
340 for delivery and therefore the timing and mode of delivery should be individualized according to
341 maternal clinical conditions or obstetric factors as usual (and not COVID-19 status alone), and the
342 decision should involve a multidisciplinary team including maternal fetal doctors, neonatologists,
343 anesthesiologists, and infective disease specialists.

344

345 **Conclusions**

346 In summary, with the limited data reported to date, mothers infected with coronavirus infections,
347 including COVID-19, >90% of whom also had pneumonia, are at increased risks of miscarriage,
348 preterm birth, preeclampsia, cesarean delivery, and their babies at higher risk of perinatal death and
349 admission to the NICU, compared to the general population. There have been no published cases of
350 clinical evidence of vertical transmission. Evidence is accumulating rapidly, so these data may need
351 to be updated soon.

352

353

354 **REFERENCES**

- 355 1. Poon LC, Yang H, Lee JCS et al. ISUOG Interim Guidance on 2019 novel coronavirus
356 infection during pregnancy and puerperium: information for healthcare professionals.
357 *Ultrasound Obstet Gynecol.* 2020, doi:10.1002/uog.22013.
- 358 2. Su S, Wong G, Shi W et al. Epidemiology, Genetic Recombination, and Pathogenesis of
359 Coronaviruses. *Trends Microbiol.* 2016; **24**:490–502.
- 360 3. World Health Organization guidelines for the global surveillance of severe acute respiratory
361 syndrome (SARS). Geneva: World Health Organization; October 2004. Accessed on March
362 15, 2020.
- 363 4. World Health Organization, Regional Office for Eastern Mediterranean: MERS situation
364 update. Geneva: World Health Organization; January 2020. Accessed on March 15, 2020.
- 365 5. Huang C, Wang Y, Li X et al. Clinical features of patients infected with 2019 novel
366 coronavirus in Wuhan, China [published correction appears in *Lancet.* 2020 Jan 30;:].
367 *Lancet.* 2020; **395**:497–506.
- 368 6. Coronavirus disease 2019 (COVID-2019): situation report – 54. Geneva: World Health
369 Organization; January 2020. Accessed on March 15, 2020.
- 370 7. Wang D, Hu B, Hu C et al. Clinical Characteristics of 138 Hospitalized Patients With 2019
371 Novel Coronavirus-Infected Pneumonia in Wuhan, China [published online ahead of print,
372 2020 Feb 7]. *JAMA.* 2020; e201585.
- 373 8. Chen YH, Keller J, Wang IT, Lin CC, Lin HC. Pneumonia and pregnancy outcomes: a
374 nationwide population-based study. *Am J Obstet Gynecol.* 2012; **207**:288.e1–288.e2887.
- 375 9. Henderson LK, Craig JC, Willis NS, Tovey D, Webster AC. How to write a Cochrane
376 systematic review. *Nephrology (Carlton)* 2010; **15**: 617-624.
- 377 10. NHS Centre for Reviews and Dissemination. Systematic reviews: CRD's guidance for
378 undertaking reviews in health care. University of York: York (UK), 2009. Available at:
379 https://www.york.ac.uk/media/crd/Systematic_Reviews.pdf. Retrieved December 3, 2016.

- 380 11. Welch V, Petticrew M, Petkovic J et al. Extending the PRISMA statement to equity-focused
381 systematic reviews (PRISMA-E 2012): explanation and elaboration. *J Clin Epidemiol* 2016;
382 **70**: 68-89.
- 383 12. Moher D, Liberati A, Tetzlaff J, Altman DG, and the PRISMA Group. Preferred Reporting
384 Items for Systematic Reviews and Meta-Analyses: The PRISMA Statement. *Ann Intern Med*
385 2009; **151**: 264–269.
- 386 13. Zorzela L, Loke YK, Ioannidis JP et al. PRISMA harms checklist: improving harms
387 reporting in systematic reviews. *BMJ* 2016; **352**: i157.
- 388 14. Stroup DF, Berlin JA, Morton SC et al. Meta-analysis of observational studies in
389 epidemiology: a proposal for reporting. Meta-analysis of Observational Studies in
390 Epidemiology (MOOSE) group. *JAMA* 2000; **283**: 2008–2012.
- 391 15. Murad MH, Sultan S, Haffar S, Bazerbachi F. Methodological quality and synthesis of case
392 series and case reports. *BMJ Evid Based Med* 2018; **23**:60-63.
- 393 16. Chen H, Guo J, Wang C, et al. Clinical characteristics and intrauterine vertical transmission
394 potential of COVID-19 infection in nine pregnant women: a retrospective review of medical
395 records. *Lancet*. 2020; **395**:809–815.
- 396 17. Wang X, Zhou Z, Zhang J, Zhu F, Tang Y, Shen X. A case of 2019 Novel Coronavirus in a
397 pregnant woman with preterm delivery [published online ahead of print, 2020 Feb 28]. *Clin*
398 *Infect Dis*. 2020; ciaa200.
- 399 18. Zhu H, Wang L, Fang C, et al. Clinical analysis of 10 neonates born to mothers with 2019-
400 nCoV pneumonia. *Transl Pediatr*. 2020; **9**:51–60.
- 401 19. Li Y, Zhao R, Zheng S, et al. Lack of Vertical Transmission of Severe Acute Respiratory
402 Syndrome Coronavirus 2, China [published online ahead of print, 2020 Jun 17]. *Emerg*
403 *Infect Dis*. 2020; **26**:10.3201/eid2606.200287.

- 404 20. Liu D, Li L, Wu X et al. Pregnancy and Perinatal Outcomes of Women with COVID-19
405 Pneumonia: A Preliminary Analysis (2/29/2020). Available at SSRN:
406 <https://ssrn.com/abstract=3548758>
- 407 21. Liu Y, Chen H, Tang K, Guo Y. Clinical manifestations and outcome of SARS-CoV-2
408 infection during pregnancy [published online ahead of print, 2020 Mar 4]. *J Infect.* 2020;
409 S0163-4453(20)30109-2.
- 410 22. Alfaraj SH, Al-Tawfiq JA, Memish ZA. Middle East Respiratory Syndrome Coronavirus
411 (MERS-CoV) infection during pregnancy: Report of two cases & review of the literature. *J*
412 *Microbiol Immunol Infect.* 2019; **52**:501–503.
- 413 23. Jeong SY, Sung SI, Sung JH, et al. MERS-CoV Infection in a Pregnant Woman in Korea. *J*
414 *Korean Med Sci.* 2017; **32**:1717–1720.
- 415 24. Alserehi H, Wali G, Alshukairi A, Alraddadi B. Impact of Middle East Respiratory
416 Syndrome coronavirus (MERS-CoV) on pregnancy and perinatal outcome. *BMC Infect Dis.*
417 2016; **16**:105.
- 418 25. Assiri A, Abedi GR, Al Masri M, Bin Saeed A, Gerber SI, Watson JT. Middle East
419 Respiratory Syndrome Coronavirus Infection During Pregnancy: A Report of 5 Cases From
420 Saudi Arabia. *Clin Infect Dis.* 2016; **63**:951–953.
- 421 26. Malik A, El Masry KM, Ravi M, Sayed F. Middle East Respiratory Syndrome Coronavirus
422 during Pregnancy, Abu Dhabi, United Arab Emirates, 2013. *Emerg Infect Dis.* 2016;
423 **22**:515–517.
- 424 27. Park MH, Kim HR, Choi DH, Sung JH, Kim JH. Emergency cesarean section in an
425 epidemic of the middle east respiratory syndrome: a case report. *Korean J Anesthesiol.*
426 2016; **69**:287–291.
- 427 28. Payne DC, Iblan I, Alqasrawi S, et al. Stillbirth during infection with Middle East
428 respiratory syndrome coronavirus. *J Infect Dis.* 2014; **209**:1870–1872.

- 429 29. Yudin MH, Steele DM, Sgro MD, Read SE, Kopplin P, Gough KA. Severe acute respiratory
430 syndrome in pregnancy. *Obstet Gynecol.* 2005; **105**:124–127.
- 431 30. Wong SF, Chow KM, Leung TN, et al. Pregnancy and perinatal outcomes of women with
432 severe acute respiratory syndrome. *Am J Obstet Gynecol.* 2004; **191**:292–297.
- 433 31. Lam CM, Wong SF, Leung TN, et al. A case-controlled study comparing clinical course and
434 outcomes of pregnant and non-pregnant women with severe acute respiratory syndrome.
435 *BJOG.* 2004; **111**:771–774.
- 436 32. Robertson CA, Lowther SA, Birch T, et al. SARS and pregnancy: a case report. *Emerg*
437 *Infect Dis.* 2004; **10**:345–348.
- 438 33. Schneider E, Duncan D, Reiken M, et al. SARS in pregnancy: this case study
439 explores the first documented infection in the U.S.A. *WHONN Lifelines* 2004; **8**:122–
440 128.
- 441 34. Stockman LJ, Lowther SA, Coy K, Saw J, Parashar UD. SARS during pregnancy, United
442 States. *Emerg Infect Dis.* 2004; **10**:1689–1690.
- 443 35. Anderson RM, Heesterbeek H, Klinkenberg D, Hollingsworth TD. How will country-based
444 mitigation measures influence the course of the COVID-19 epidemic? [published online
445 ahead of print, 2020 Mar 9]. *Lancet.* 2020; S0140-6736(20)30567-5. doi:10.1016/S0140-
446 6736(20)30567-5.
- 447 36. Royal College of Obstetricians and Gynaecologists. Coronavirus (COVID-19) Infection in
448 Pregnancy – Information for healthcare professionals. March 2020
449 [https://www.rcog.org.uk/globalassets/documents/guidelines/coronavirus-covid-19-infection-](https://www.rcog.org.uk/globalassets/documents/guidelines/coronavirus-covid-19-infection-in-pregnancy-v2-20-03-13.pdf)
450 [in-pregnancy-v2-20-03-13.pdf](https://www.rcog.org.uk/globalassets/documents/guidelines/coronavirus-covid-19-infection-in-pregnancy-v2-20-03-13.pdf)

451
452**Table 1. General characteristics of the included studies.**

Author	Year	Study location	Study period	Study design	Pregnancies (n)	Type of Coronavirus	Mean maternal age
Chen	2020	China	2020	Retrospective	9	Sars-CoV-2	29.9
Wang	2020	China	2020	Case report	1	Sars-CoV-2	28
Zhu	2020	China	2020	Retrospective	9	Sars-CoV-2	30.9
Li	2020	China	2020	Case report	1	Sars-CoV-2	30
Liu*	2020	Hubei, China	2020	Retrospective	11	Sars-CoV-2	32.5
Liu	2020	Guangdong, China	2020	Retrospective	10	Sars-CoV-2	30.5
Alfaraj	2019	Saudi Arabia	2015	Case series	2	Mers-CoV	34
Jeong	2017	South Korea	2015	Case report	1	Mers-CoV	39
Alserahi	2016	Saudi Arabia	NR	Case report	1	Mers-CoV	33
Assiri	2016	Saudi Arabia	2012-2016	Case series	5	Mers-CoV	30.8
Malik	2016	United Arab Emirates	2013	Case report	1	Mers-CoV	32
Park	2016	South Korea	2015	Case report	1	Mers-CoV	39
Payne	2015	Jordan	2012	Case report	1	Mers-CoV	39
Yudin	2005	Canada	NR	Case report	1	Sars-CoV	33
Wong	2004	Hong Kong, China	2003	Retrospective	12	Sars-CoV	30.6
Lam	2004	China	2003	Retrospective	10	Sars-CoV	31.6
Robertson	2004	USA	2003	Case report	1	Sars-CoV	36
Schneider	2004	USA	2003	Case report	1	Sars-CoV	NR
Stockman	2004	USA	2003	Case report	1	Sars-CoV	38

453
454
455
456
457
458

N, numbers; NR, not reported.

*: preliminary data, pre-peer review version.

459
460**Table 2.** Pooled proportions of the different clinical symptoms and laboratory parameters in the overall population of pregnancies infected with CoV infection.

Outcome	Studies (n)	Pregnancies (n/N)	I² (%)	Pooled proportions (95% CI)
Fever	17	64/76	8.2	82.57 (74.4-90.2)
Cough	18	44/77	7.3	57.10 (45.8-68.0)
Dyspnea	18	21/77	53.2	26.98 (18.2-36.8)
Chest pain	17	3/66	0	8.61 (3.4-16.0)
Pneumonia	16	54/57	0	91.84 (84.0-97.2)
Lymphopenia	10	40/48	49.1	79.87 (60.4-93.9)
Elevated liver enzymes	7	9/26	0	36.59 (20.4-54.5)
Admission to ICU	18	22/70	58.1	34.10 (17.5-53.0)
Need for mechanical ventilation	17	16/69	42.9	26.29 (13.3-41.9)
Maternal death	19	9/79	0	12.30 (6.3-19.9)

461
462
463

n/N, number of cases / total number of included pregnancies; CI, confidence interval; ICU, intensive care unit

464 **Table 3.** Pooled proportions of treatment used in the overall population of pregnancies infected with Coronavirus infection.
 465

Outcome	Studies (n)	Pregnancies (n/N)	I² (%)	Pooled proportions (95% CI)
Antiviral therapy*	14	37/51	50	67.66 (47.2-85.1)
Antibiotic therapy	14	49/52	27.9	89.26 (76.8-97.3)
Steroids**	12	12/31	58.6	29.81 8.2-57.9)

466
 467 n/N, number of cases / total number of included pregnancies; CI, confidence interval.
 468

469 *Lopinavir/Ritonavir or Oseltamivir were the most common antiviral agents. Ribavirin was used in Wong et al.
 470

471 **Maternal (not fetal) indications
 472

473
474**Table 4.** Pooled proportions of the different pregnancy outcomes in the overall population of pregnancies infected with Coronavirus infection.

Outcome	Studies (n)	Pregnancies (n/N)	I² (%)	Pooled proportions (95% CI)
PTB <37 weeks	16	14/56	25.5	24.30 (12.5-38.6)
PTB <34 weeks	16	11/56	1.9	21.79 (12.5-32.9)
PE	6	2/19	0	16.21 (4.2-34.1)
PPROM	8	6/34	0	20.72 (9.5-34.9)
FGR	10	2/29	0	11.66 (3.2-24.4)
Miscarriage	2	8/21	0	39.08 (20.2-59.8)
Cesarean delivery	17	50/58	4	83.91 (73.8-91.9)

475
476
477
478
479

n/N, number of cases / total number of included pregnancies; CI, confidence interval; PTB, preterm birth; PE, preeclampsia; pPROM, preterm prelabor rupture of membranes; FGR, fetal growth restriction.

480
481**Table 5.** Pooled proportions of the different pregnancy outcomes explored in the present systematic review according to the type of viral infection.

Outcome	Sars-CoV				Mers-CoV				Sars-CoV-2			
	Studies	Pregnancies (n/N)	Pooled % (95% CI)	I ² (%)	Studies	Pregnancies (n/N)	Pooled % (95% CI)	I ² (%)	Studies	Pregnancies (n/N)	Pooled % (95% CI)	I ² (%)
PTB <37 weeks	5	1/15	15.03 (0.3-45.6)	31.8	6	0/11	0 (0-28.9)	0	6	14/32	41.11 (25.6-57.6)	0
PTB <34 weeks	5	4/15	28.89 (10.7-51.6)	0	6	3/11	32.11 (10.0-59.8)	9.5	6	4/32	15.03 (3.9-31.7)	22.6
Pre-eclampsia	2	0/2	0 (0-67.0)	0	2	1/7	19.10 (1.1-51.3)	0	3	1/12	13.55 (1.2-36.0)	0
PPROM	2	1/2	50.0 (0.5-95.3)	46	2	0/2	0 (0-54.4)	0	5	5/31	18.78 (0.8-33.5)	0
FGR	5	2/15	18.52 (4.4-39.5)	0	3	0/4	0 (0-48.7)	0	3	0/12	0 (0-21.4)	0
Miscarriage	2	8/21	39.08 (20.2-59.8)	0	-	-	-	-	-	-	-	-
Cesarean delivery	5	7/9	72.23 (44.1-93.1)	0	6	5/8	61.79 (32.7-86.9)	0	6	38/41	91.04 (81.0-97.6)	0

482
483
484
485
486
487
488

n/N, number of cases / total number of included pregnancies; CI, confidence interval; PTB, preterm birth; pPROM, preterm premature rupture of membranes; FGR, fetal growth restriction.

489
490**Table 6.** Pooled proportions of the different perinatal outcomes in the overall population of pregnancies infected with Coronavirus infection.

Outcome	Studies (n)	Fetuses/Newborns (n/N)	I² (%)	Pooled proportions (95% CI)
Fetal distress	13	15/44	13.6	34.15 (20.3-49.5)
Apgar score < 7	12	1/48	0	6.08 (1.3-13.9)
Neonatal asphyxia	9	0/27	0	0 (0-15.7)
Admission to NICU	4	3/12	76.3	57.16 (3.6-99.8)
Perinatal death	16	5/60	0	11.11 (84.8-19.6)
Vertical transmission	16	0/60	0	0 (0-10.7)

491
492
493
494
495
496
497

n/N, number of cases / total number of included pregnancies; CI, confidence interval; NICU, neonatal intensive care unit.

498
499**Table 7.** Pooled proportions of the different perinatal outcomes explored in the present systematic review according to the type of viral infection.

43.

Outcome	Sars-CoV				Mers-CoV				Sars-CoV-2			
	Studies	Fetuses/Newborns (n/N)	Pooled % (95% CI)	I ² (%)	Studies	Fetuses/Newborns (n/N)	Pooled % (95% CI)	I ² (%)	Studies	Fetuses/Newborns (n/N)	Pooled % (95% CI)	I ² (%)
Fetal distress	5	3/9	35.89 (12.0-64.4)	0	4	0/5	0 (0-44.5)	0	4	12/30	43.02 (15.3-73.4)	64.7
Apgar score < 7	4	0/4	0 (0-60.2)	0	3	0/3	0 (0-56.9)	0	5	1/41	4.53 (0.4-12.6)	0
Neonatal asphyxia	4	0/4	0 (0-60.2)	0	2	0/2	0 (0-67.0)	0	3	0/21	0 (0-13.5)	0
Admission to NICU	-	-	-	-	2	0/2	0 (0-67.0)	0	2	1/10	8.71 (0.01-31.4)	81.3
Perinatal death	5	0/9	0 (0-31.4)	0	6	3/10	33.15 (11.2-59.9)	0	5	2/41	7.00 (1.4-16.3)	0
Vertical transmission	6	0/14	0 (0-24.0)	0	4	0/4	0 (0-60.2)	0	6	0/42	0 (0-9.6)	0

500
501
502
503

n/N, number of cases / total number of included pregnancies; CI, confidence interval; NICU, neonatal intensive care unit.

504

505

506

507

508

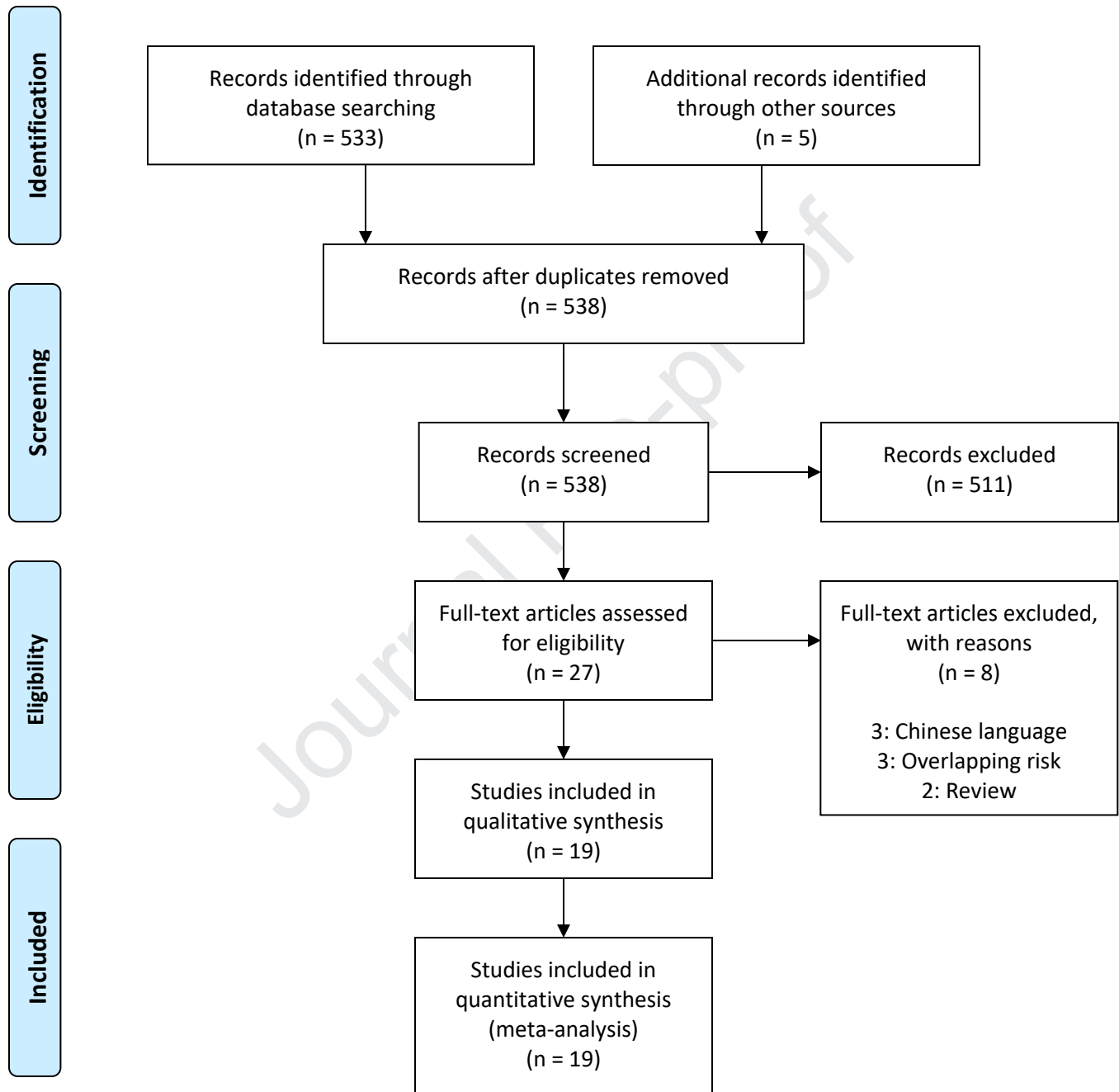
509 **Figure legend**

510 **Figure 1.** Systematic review flowchart

Journal Pre-proof



PRISMA 2009 Flow Diagram



From: Moher D, Liberati A, Tetzlaff J, Altman DG, The PRISMA Group (2009). Preferred Reporting Items for Systematic Reviews and Meta-Analyses: The PRISMA Statement. PLoS Med 6(7): e1000097. doi:10.1371/journal.pmed1000097

For more information, visit www.prisma-statement.org.

Supplementary Table 1. Excluded studies and reason for the exclusion

Author	Year	Title	Reason for the exclusion
Chen	2020	Pregnant Women With New Coronavirus Infection: A Clinical Characteristics and Placental Pathological Analysis of Three Cases	Chinese language; A series of 11 cases from the same institution was published by Liu et al and was included in this systematic review
Zhang	2020	Analysis of the pregnancy outcomes in pregnant women with COVID-19 in Hubei Province	Chinese language
Liu	2020	Coronavirus disease 2019 (COVID-19) during pregnancy: a case series	Overlapping risk with Liu 2020 (included with preliminary, pre-peer review data)
Chen	2020	Infant born to mothers with a new Coronavirus (COVID-19)	Same Institution of Zhu 2020 that was included in this systematic review
Li	2005	Severe acute respiratory syndrome in neonates and children	Review about pediatric outcomes
Ng	2004	SARS in newborns and children	Review; Data on newborns born from infected mothers are reported in papers already included in this systematic review
Shek	2003	Infant born to mothers with SARS	It is likely that all – or the majority – of the cases presented in this series are also included in Wong 2004, that is already included in this systematic review
Zhang	2003	Clinical analysis of pregnancy in second and third trimesters complicated severe acute respiratory syndrome	Chinese language

Supplementary Table 2. Radiological findings for the diagnosis of pneumonia

Author	Year	Type of CoV	Diagnosis of pneumonia
Chen	2020	Sars-CoV-2	Typical sign of viral respiratory infection at CT
Wang	2020	Sars-CoV-2	Bilateral ground glass opacities at CT
Zhu	2020	Sars-CoV-2	Bilateral ground glass opacities, patchy consolidation, blurred borders at CT
Li	2020	Sars-CoV-2	Patchy infiltrations at CXR
Liu	2020	Sars-CoV-2	Ground glass opacities, crazy paving, consolidations at CT
Jeong	2017	Mers-CoV	Diffuse opacity in the lower lung area at CXR
Alserehi	2016	Mers-CoV	Bilateral infiltrates and lower lobe opacity at CXR
Assiri	2016	Mers-CoV	Bilateral infiltrates and lower lobe opacity at CXR
Malik	2016	Mers-CoV	Bilateral consolidations at CT
Park	2016	Mers-CoV	Patchy opacities in the lower lobes at CXR
Yudin	2005	Sars-CoV	Patchy lobe infiltrates at CXR
Wong	2004	Sars-CoV	Features suggestive for progressive air-space disease at CXR
Lam	2004	Sars-CoV	Features suggestive for atypical pneumonia at CXR
Robertson	2004	Sars-CoV	Bilateral lower lobe infiltrates at CXR
Schneider	2004	Sars-CoV	Progressive pulmonary infiltrates at CXR
Stockman	2004	Sars-CoV	Diffuse infiltrates at CXR

CoV, coronavirus; CT, computerized tomography; CXR, chest x-ray.

Supplementary Table 3. Pooled proportions of the different clinical symptoms and laboratory parameters according to the type of viral infection.

Outcome	Sars-CoV				Mers-CoV				Sars-CoV-2			
	Studies	Pregnancies (n/N)	Pooled % (95% CI)	I ² (%)	Studies	Pregnancies (n/N)	Pooled % (95% CI)	I ² (%)	Studies	Pregnancies (n/N)	Pooled % (95% CI)	I ² (%)
Fever	6	26/26	100 (86.3-100)	0	5	6/9	64.11 (35.6-88.0)	0	6	32/41	75.56 (61.9-87.0)	0
Cough	6	20/26	74.21 (57.1-88.2)	0	6	7/10	65.59 (38.8-88.0)	0	6	17/41	42.02 (28.0-56.7)	0
Dyspnea	6	11/26	48.79 (27.5-70.3)	17.5	6	7/10	66.85 (40.1-88.8)	0	6	3/41	8.89 (2.4-19.0)	0
Chest pain	6	2/26	12.67 (3.3-27.0)	0	6	1/10	18.58 (3.0-43.2)	0	5	0/30	0 (0-11.9)	0
Pneumonia	6	26/26	100 (86.3-100)	0	6	9/11	76.59 (43.3-97.5)	36.8	4	19/20	91.68 (76.9-99.3)	0
Lymphopenia	4	24/24	100 (87.1-100)	0	2	1/2	50 (0.5-95.3)	46	4	15/22	65.59 (42.0-85.7)	18.6
Elevated liver enzymes	3	5/14	37.91 (14.7-64.5)	4.3	1	1/1	100 (25.0-100)	-	3	3/11	29.55 (8.6-56.6)	0
Admission to ICU	6	14/26	53.32 (35.3-70.9)	0	7	6/12	44.57 (16.8-74.3)	29	5	2/32	9.29 (0.6-26.8)	39.7
Need for mechanical ventilation	6	10/26	39.98 (23.2-58.1)	0	7	5/12	40.85 (17.1-67.1)	9.4	4	1/31	5.38 (0.4-15.5)	0
Maternal death	6	6/26	25.79 (11.8-42.9)	0	7	3/12	28.59 (9.6-52.8)	0	6	0/41	0 (0-9.8)	0

n/N, number of cases / total number of included pregnancies; CI, confidence interval; ICU, intensive care unit

Supplementary Table 4. Pooled proportions of the need for therapy according to the type of viral infection.

Outcome	Sars-CoV				Mers-CoV				Sars-CoV-2			
	Studies	Pregnancies (n/N)	Pooled % (95% CI)	I ² (%)	Studies	Pregnancies (n/N)	Pooled % (95% CI)	I ² (%)	Studies	Pregnancies (n/N)	Pooled % (95% CI)	I ² (%)
Antiviral therapy*	5	13/16	66.87 (30.0-94.5)	41.9	4	2/4	50.0 (6.8-93.2)	0	5	22/31	74.83 (41.0-97.0)	70.9
Antibiotic therapy	6	26/26	100 (86.3-100)	0	4	2/4	50.0 (6.8-93.2)	0	4	21/22	90.29 (63.7-99.9)	50.5
Steroids**	5	11/16	50.08 (14.8-85.3)	45.4	4	0/4	0 (0-60.2)	0	3	1/11	22.83 (0.9-78.8)	63

n/N, number of cases / total number of included pregnancies; CI, confidence interval.

*Lopinavir/Ritonavir or Oseltamivir were the most common antiviral agents. Ribavirin was used in Wong et al.

**Maternal (not fetal) indications

Supplementary Table 5. Quality assessment of the included studies

Case series					
Author	Year	Selection	Comparability	Outcome	
Chen	2020	★★	★★	★★★	
Zhu	2020	★★	★★	★★	
Liu	2020	★★	★★	★★★	
Liu	2020	★★	★★	★★	
Alfaraj	2019	★★	★	★★	
Assiri	2016	★★	★	★★	
Wong	2003	★★	★★	★	
Lam	2003	★★	★★	★★	
Case reports					
Author	Year	Selection	Ascertainment	Causality	Reporting
Wang	2020	★	★★	★★★	★
Li	2020	★	★★	★★	★
Jeong	2017	★	★	★★	★
Alserehi	2016	★	★	★★	★
Malik	2016	★	★★	★★	★
Park	2016	★	★★	★	★
Payne	2015	★	★★	★★	★
Yudin	2005	★	★★	★★	★
Robertson	2004	★	★★	★★★	★
Schneider	2004	★	★★	★★★	★
Stockman	2004	★	★★	★★	★

Supplementary Table 6. Details on perinatal deaths

Author	Year	Type of CoV	Details on perinatal deaths
Zhu	2020	Sars-CoV-2	<i>1 Neonatal death:</i> The baby was delivered at a gestational age of 34+5 weeks and admitted 30 minutes after delivery due to shortness of breath and moaning. Eight days later, he developed refractory shock, multiple organ failure, and disseminated intravascular coagulation, which were treated by the transfusion of platelets, suspended red blood cells, and plasma; he died on the 9th day.
Liu	2020	Sars-CoV-2	<i>1 stillbirth,</i> no other available details
Assiri	2016	Mers-CoV	<i>1 stillbirth:</i> At 34 weeks, the mother complained shortness of breath since 3 days and was admitted for elevated blood pressure and 3+ proteinuria consistent with preeclampsia, and pneumonia was diagnosed by means of chest radiography. Fetal heart tones were absent, and intrauterine fetal demise was suspected. A stillborn infant was delivered the same day. <i>1 neonatal death:</i> At 24 weeks gestation, the mother presented to the hospital on 23 October with cough and myalgia, and chest radiography at admission showed a right lower lobe opacity. Her respiratory status deteriorated during hospitalization, and she was admitted to the ICU on 28 October for ARDS requiring intubation and mechanical ventilation. On 31 October, the patient delivered a 240-gram infant by cesarean delivery. The infant died 4 hours after birth.
Payne	2015	Mers-CoV	<i>1 stillbirth:</i> During the outbreak period, the mother's acute respiratory symptoms (fever, rhinorrhea, fatigue, headache, and cough) occurred concurrently with vaginal bleeding and abdominal pain on the seventh day of illness, and she spontaneously delivered a stillborn infant.

NR, not reported.