

# LINE-BASED REGISTRATION OF DSM AND HYPERSPECTRAL IMAGES

J. Avbelj<sup>a,b</sup>, D. Iwaszczuk<sup>c</sup>, R. Müller<sup>a</sup>, P. Reinartz<sup>a</sup>, U. Stilla<sup>c</sup>

<sup>a</sup> German Aerospace Center, Oberpfaffenhofen, 82234 Weßling -  
(janja.avbelj, rupert.mueller, reinartz)@dlr.de

<sup>b</sup> Chair of Remote Sensing Technology, Technische Universität München, Arcisstr. 21, 80333 München

<sup>c</sup> Photogrammetry and Remote Sensing, Technische Universität München, Arcisstr. 21, 80333 München -  
(dorota.iwaszczuk, stilla)@tum.de

**KEY WORDS:** Hyper spectral, DEM/DTM, Registration, Multisensor, Urban, Matching, LiDAR

## ABSTRACT:

Data fusion techniques require a good registration of all the used datasets. In remote sensing, images are usually geo-referenced using the GPS and IMU data. However, if more precise registration is required, image processing techniques can be employed. We propose a method for multi-modal image coregistration between hyperspectral images (HSI) and digital surface models (DSM). The method is divided in three parts: object and line detection of the same object in HSI and DSM, line matching and determination of transformation parameters. Homogeneous coordinates are used to implement matching and adjustment of transformation parameters. The common object in HSI and DSM are building boundaries. They have apparent change in height and material, that can be detected in DSM and HSI, respectively. Thus, before the matching and transformation parameter computation, building outlines are detected and adjusted in HSI and DSM. We test the method on a HSI and two DSM, using extracted building outbounds and for comparison also extracted lines with a line detector. The results show that estimated building boundaries provide more line assignments, than using line detector.

## 1 INTRODUCTION

Data fusion is widely used in variety of fields and applications in science and engineering. It is an important procedure for integration and analysis of many datasets in photogrammetry, remote sensing and computer vision. Data fusion of remote sensing data becomes notably challenging while integrating data from different sensors, mounted on different platforms and collected in different points in time. Typically the acquired data is geo-referenced, but often the accuracy of the geo-referencing is not sufficient to achieve the best possible fit between all data sets. The geometric inaccuracies of data integration can lead to difficult or even impossible interpretation of fused result. Therefore, coregistration of all datasets has to be carried out before the fusion. For multi-modal image registration, methods using mutual information are widely used in remote sensing as well as in medical imaging (Pluim et al., 2003).

The aim of our work is multi-modal coregistration of hyperspectral images (HSI) with digital surface model (DSM) in image space using line features. Focusing on urban areas, a high variety of objects is present in a scene having different sizes, shapes, heights and materials. Common features or characteristics of both datasets must be found to estimate the transformation parameters. On one hand, HSI are optical images describing spectral characteristics of each pixel with high spectral resolution. Every material is uniquely described with a spectral signature and can be compared to the spectra in HSI. Thereby material of each image pixel can be defined. On the other hand, DSM show heights of the observed areas and objects in them. The objects, such as streets, buildings and bridges can be detected in HSI, because they are often built from a material different from surroundings. In DSM object detection is possible as well as predication about objects height and geometry. Fusion of these both datasets contributes to better interpretation and is expected to increase the detection rate.

Buildings and other man-made objects are mainly linear structures. Therefore, for description and coregistration of data captured in urban areas many authors propose lines or line segments (Stilla, 1995, Schenk, 2004, Debevec et al., 1996, Iwaszczuk et

al., 2012, Ok et al., 2012). However, each detected line has a different accuracy depending on used data and detection method. This accuracy should also be taken into consideration for coregistration. Accordingly we present a method for line-based coregistration of DSM and HSI data with respect to the accuracy of the linear features. We define the affine transformation between the data sets. As described in (Hartley and Zisserman, 2004) and (Zeng et al., 2008) affine transformation can be calculated from line correspondences using direct linear transformation method (DLT), but they do not introduce the accuracy of the used lines. What is more, we propose detecting lines as building outbounds in HSI and DSM, and so incorporating also topology knowledge (Avbelj, 2012).

## 2 OBJECT AND LINE DETECTION

### 2.1 Material Selection and Material Map Generation

Some of the pixels in HSI consist of more than just one material, called mixed pixels. If a complete collection of materials with spectral signatures is known, then the fractions of materials can be computed for every HSI pixel. Common procedure to decompose each measured pixel into the constituent spectra is spectral unmixing (Keshava, 2003). If spectra of few target materials are known the unmixing does not provide reliable result. Nevertheless, the similarity between known spectra and image spectra can be computed. Such similarity measures are for example euclidean distance or distances designed especially for HSI data, the Spectral Angle Mapper (SAM) (Kruse et al., 1993) and Spectral Information Divergence (Chang, 2000). We choose SAM similarity measure because it is nearly insensitive to illumination, however any other similarity measure or spectral unmixing result could be used. SAM is computed as

$$SAM(\mathbf{r}, \mathbf{t}) = \cos^{-1} \frac{\sum_{i=1}^n \mathbf{k}_i \mathbf{t}_i}{\sqrt{\sum_{i=1}^n \mathbf{k}_i^2 \sum_{i=1}^n \mathbf{t}_i^2}} \quad (1)$$

where,  $\mathbf{k}$  is reference spectra,  $\mathbf{t}$  is image spectra and  $n$  is the number of channels in HSI. The range of SAM is between 0 and 1 for

same and completely dissimilar spectra, respectively.

The spectral signatures of roofing materials present in the scene, which seldom appear on the ground, such as copper and ceramic tiles, are manually collected in HSI. Then the SAM between known material spectra and each pixel in HSI is computed. So, for every chosen roofing material the material map with similarity distances is computed.

## 2.2 Line Detection

Line segments are needed, to establish correspondence between a HSI and height image. The lines are detected in height data and in material maps, but not directly in HSI. The material map calculated as proposed in 2.1 are material maps of roofing materials, therefore lines on building boundaries are of our interest. So, we detect the building outlines and use them for line assignment. For a comparison, we extract the line segments also with a linear-time line segment detector (von Gioi et al., 2010). Line assignment and transformation parameters are calculated for both, extracted outbounds and extracted lines.

**2.2.1 Building Outline Detection** consists of three steps: a) building mask extraction, b) building model selection, and c) boundary adjustment. Many building detection and modelling methods were proposed in last decades, e.g. (Maas and Vosselman, 1999) proposed a method for building modelling from high resolution LiDAR data, whereas (Sohn and Downman, 2007) used multispectral and height data for extraction of buildings. In this section, we only summarize the building outline detection, because it exceeds the scope of this paper.

a) An initial guess for building regions is a building mask. From DSM, a building mask is extracted by normalizing the DSM, defining the above-ground objects and removing the high vegetation. In HSI, the building mask is defined by automatic thresholding material map. The threshold is set to  $3\sigma$  from selected material pixels.

b) We assume buildings can be composed from rectilinear shapes. Under this assumption, every building can be reconstructed by subtracting and adding rectangles. Such hierarchical approach for building outline detection is proposed by (Gerke et al., 2001), but we use model selection instead of fixed threshold of minimum area to be estimated. For every building region in the building mask, a set of models is build. First, the model of level one  $ml = 1$  is build as a minimum bounding box of a region. Then, the rasterized minimum bounding box is subtracted from the building mask. If there are any remaining pixels, the bounding boxes of them are computed, and building model of level two  $= 2$  is computed. Furthermore, the models are iteratively build until no regions are left to approximate. Before the model of higher level is build, the boundaries are adjusted as described in c). Final, the optimal model is selected as a trade off between complexity and best fitting model. The Model Complexity is computed as

$$ModelComplexity = \sqrt{ml}RMS(\mathbf{r}_{i,ml}) \quad (2)$$

where  $\mathbf{r}_{i,m}$  is the shortest distance between the border pixel  $i$  of the building mask and building model lines of level  $ml$ ,  $ml$  is the model level, and RMS is a root mean square value of distance vector  $\mathbf{r}_{i,ml}$ .

c) Every line segment of the selected building model is adjusted according to the image gradients using gradient descend method.

The new line segments are intersected to produce the building outline. Lines shorter than 3 pixels are not adjusted, and building polygon is regularized by joining subsequent lines with intersection angle smaller than  $10^\circ$ .

**2.2.2 The linear-time line segment detector** (LSD) partitions the image into line-support regions according to the proximity and gradient angle, then finds the line segments best approximating each of these regions and lastly, validates each line segment according to the line-support region (von Gioi et al., 2010).

## 3 MATCHING OF HSI AND HEIGHT DATA

### 3.1 Line assignment

Both algorithms, line detection and building outline detection, result in sets of lines in both data sets, HSI and height data. According to the imperfect geo-referencing of the data and inaccurate line detection, a typical mismatch between the line segments exists. The range of this mismatch depends mostly on the accuracy of geo-referencing. We propose a method which can be applied also for data where the relative error of geo-referencing between the data sets amounts to 20-30 image pixels or even larger.

We implemented an automatic approach using a 3D accumulator for line matching. We use one of the data sets as reference and move line segments from the second data set over the line segments from the first data set. For each position we check how many lines correspond to each other and fill accumulator with this number. At the same time we store the line correspondences for this position. We repeat this procedure rotating line segments from the second data set by small angles in range of few degrees. This algorithm results in a 3D accumulator filled with number of fitting lines for each line correspondences assigned to each cell of accumulator. Then we search for the cell with maximal number of correspondences in accumulator and use line correspondences assigned to this cell for transformation parameter calculation.

The correspondence between the lines for every position and angle of the accumulator is determined using statistical tests. We use homogeneous coordinates to implement the problem. As shown in (Heuel, 2002) we calculate the distance vector  $\mathbf{d}$  and test the hypothesis  $H_0$

$$H_0 : \mathbf{d} = U(\mathbf{x})\mathbf{y} = V(\mathbf{y})\mathbf{x} = \mathbf{0} \quad (3)$$

where  $\mathbf{x}$  and  $\mathbf{y}$  are entities and  $U$  and  $V$  are functions defining the relation between  $\mathbf{x}$  and  $\mathbf{y}$ . In this particular case  $\mathbf{x}$  and  $\mathbf{y}$  are lines and we investigate their incidence. Further on, we calculate the covariance matrix for the distance vector  $\mathbf{d}$

$$\Sigma_{\mathbf{d}\mathbf{d}} = U(\mathbf{x})\Sigma_{\mathbf{y}\mathbf{y}}U^T(\mathbf{y}) + V(\mathbf{y})\Sigma_{\mathbf{x}\mathbf{x}}V^T(\mathbf{x}). \quad (4)$$

Then we reject  $H_0$  with the significance level  $\alpha$  if

$$\mathbf{d}^T \Sigma_{\mathbf{d}\mathbf{d}}^{-1} \mathbf{d} > \epsilon_H = \chi_{1-\alpha;n}^2. \quad (5)$$

Statistical tests are done for all combination between lines from the first dataset with lines from the second dataset and is therefore computationally very expensive. To restrict possible line combination and reduce computational effort we generate  $H_0$  only if the distance between the middle points of the line segments is smaller than a defined threshold. This threshold, similarly to the size of accumulator, depends on the relative error of geo-referencing between the datasets.

### 3.2 Determination of transformation parameters

Selected correspondences are used for determination of the transformation matrix  $H$ . We set our functional model as

$$\mathbf{m} = H^{-T}\mathbf{l} \Rightarrow H^T\mathbf{m} = \mathbf{l} \quad (6)$$

where  $\mathbf{m}$  represents a line segments from the reference data set and  $\mathbf{l}$  represents a line segments from the second data set (see (Hartley and Zisserman, 2004), p.36, Eq. 2.6 ). We assume that  $\mathbf{m}$  and  $\mathbf{l}$  represent the same line, so the condition for the identity relation is

$$H^T\mathbf{m} \times \mathbf{l} = 0. \quad (7)$$

Then we define transformation  $H$  as affine transformation

$$H = \begin{bmatrix} h_1 & h_2 & h_3 \\ h_4 & h_5 & h_6 \\ 0 & 0 & 1 \end{bmatrix}. \quad (8)$$

We calculate lines as joint of two end points of detected line segments  $\mathbf{e}_1$  and  $\mathbf{e}_2$

$$\mathbf{l} = \mathbf{e}_1 \times \mathbf{e}_2 \quad (9)$$

and normalize spherically

$$\mathcal{N}(\mathbf{l}) = \frac{\mathbf{l}}{|\mathbf{l}|}. \quad (10)$$

Finally we estimate optimal affine transformation using Gauss-Helmert model. We set conditions

$$\mathbf{g}(\hat{\mathbf{b}}, \hat{\mathbf{p}}) = H^T\mathbf{m} \times \mathbf{l} = 0 \quad (11)$$

for observations  $\hat{\mathbf{b}}$  and parameters  $\hat{\mathbf{p}} = [h_1 \ h_2 \ h_3 \ h_4 \ h_5 \ h_6]^T$  and constrains

$$\mathbf{c}(\hat{\mathbf{b}}) = |\mathbf{l}| - 1 = 0 \quad (12)$$

for observations.

## 4 TESTS

### 4.1 Data Descriptions

Three datasets of a residential area of the city of Munich are used to demonstrate the proposed coregistration method. First dataset, HSI was acquired with a HySpex hyperspectral camera. The system consists of two sensors, VNIR and SWIR camera, providing two images that are combined in a postprocessing step. For the tests we used the VNIR image only with 160 channels in a spectral range of 410-990 nm, and 3.7 nm sampling interval. Four channels were removed before processing due to the high noise level. Second dataset, 3K DSM was computed from multi-view optical images using semi global matching. The optical images were acquired with the 3K camera system, consisting of three non-metric cameras, one nadir looking and, and two looking oblique sideways. The 3K system has a GPS/INS unit and was developed at DLR IMF (Kurz et al., 2012). HSI and 3K images have a spatial resolution of 2 m. Third dataset is a LiDAR DSM with 1 m spatial resolution. It is resampled from the LiDAR point cloud with an average density of 1.69 pixels/m<sup>2</sup> with the nearest neighbour method.

### 4.2 Experimental Results

Material maps of three most common roofing materials present in the HSI, i.e. red roof tiles, concrete and copper, are computed from manual selected spectra. For each material, ten spectra are collected and averaged to obtain reference material spectra (Fig. 1). Averaging selected image spectra over few pixels

suppresses possible noise, and is more reliable than using just a single HSI pixel. Spectral signatures in Fig. 1 have some sharp edges, indicating systematic noise in the HSI. This spectral inaccuracies do not significantly influence the material map computation, because SAM is computed between collected image spectra from HSI and the pixels of the same HSI. On the contrary, using existing spectral library spectra and HSI with some systematic errors, e.g. not sufficiently corrected atmospheric or radiometric influence, would influence the material map computation.

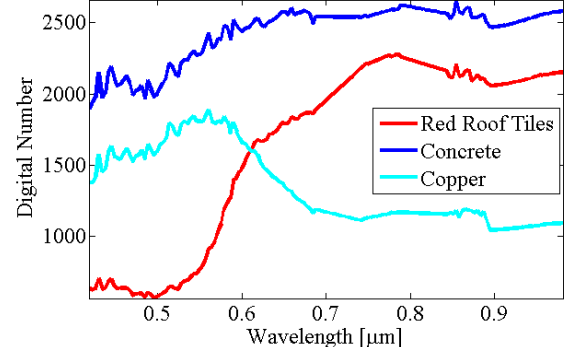


Figure 1: Spectral signatures of three roofing materials.

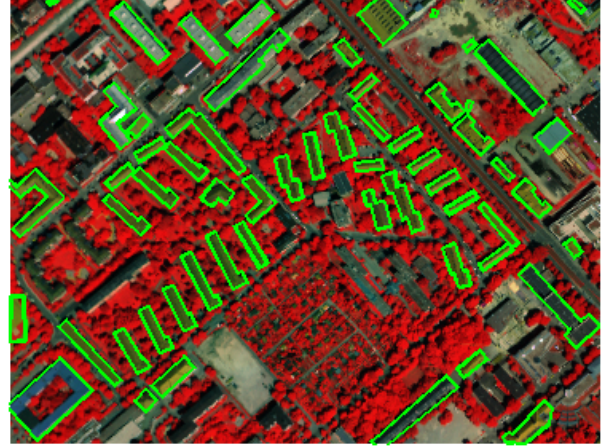


Figure 2: Detected buildings (green) in HSI. False colour composite image with channels of wavelength  $\lambda = 0.66, 0.51$  and  $0.45 \mu m$ .

Building outlines and lines are extracted in HSI (Fig. 2), LiDAR DSM (Fig. 3, 4) and 3K DSM (Fig. 5, 6). Then, line assignment and coregistration is computed twice for both pairs of images, i.e. LiDAR DSM - HSI and 3K DSM - HSI; First with extracted building outbounds and second with detected lines with LSD. For line matching the building outbounds are considered to be line segments without topology.

Proposed building outbound detection delivers large enough number of approximate buildings for line assignment and coregistration. In addition, more assignments are found between the extracted building outbounds than between extracted lines with LSD (Fig. 3-6). Majority of the adjusted buildings are approximated with an appropriate model. However, in all three used datasets, some buildings partly present in the image are badly estimated or not estimated at all. In Fig. 2 the number of extracted building outbounds is not complete, because only three roof materials were considered. To increase the completeness of building extraction, all building materials in the given scene should be collected.

The estimated affine parameters with standard deviations  $h_1 - h_6$

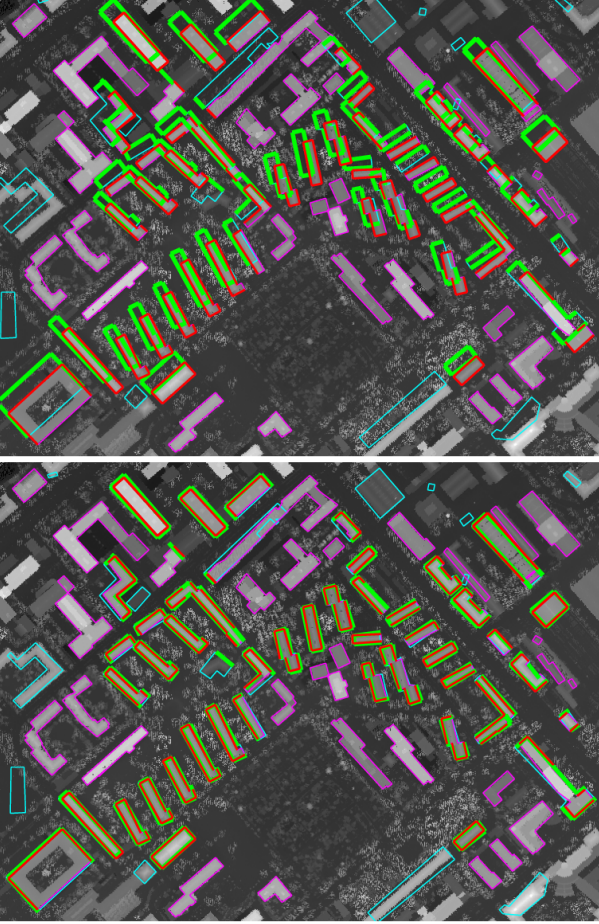


Figure 3: Detected buildings in LiDAR DSM and HSI, before (top) and after coregistration (bottom). Red: lines detected in LiDAR data matched with lines detected in HSI. Cyan: lines detected in HSI without any matches found in DSM. Magenta: lines detected in LiDAR DSM without any matches found in HSI .

(Eq. 8) for LiDAR DSM and HSI, and for 3K DSM and HSI are listed in Tab. 1 and 3. The parameters  $h_3$  and  $h_6$  are the translations in  $x$  and  $y$  direction in pixels of a reference image; This is 1 m for LiDAR DSM and 2 m for 3K DSM. The other four  $h$  affine parameters are without units. The initial registration of LiDAR DSM and HSI was corrupted to demonstrate effectiveness of the accumulator. The initial registration of 3K DSM and HSI was already on a pixel level. In all tests, the significance level  $\alpha = 0.08$  (Eq. 5) is set for testing the correspondence between lines.

	Buildings	Lines
$h_1 \pm \sigma_{h1}$	$0.9971 \pm 0.0004$	$0.9986 \pm 0.0005$
$h_2 \pm \sigma_{h2}$	$-0.0008 \pm 0.0006$	$-0.0015 \pm 0.0007$
$h_3 \pm \sigma_{h3}$	$12.4056 \pm 0.0732$	$12.1408 \pm 0.0882$
$h_4 \pm \sigma_{h4}$	$0.0010 \pm 0.0004$	$0.0017 \pm 0.0004$
$h_5 \pm \sigma_{h5}$	$0.9994 \pm 0.0006$	$0.9987 \pm 0.0007$
$h_6 \pm \sigma_{h6}$	$12.7813 \pm 0.0758$	$12.2797 \pm 0.0939$

Table 1: Estimated affine parameters for LiDAR DSM and HSI using extracted building outlines and lines.

Estimated affine parameters for LiDAR DSM - HSI coregistration, using building outbounds or lines are comparable, the standard deviations of all  $h$  parameters are slightly smaller (Tab. 1). Same holds true for the 3K DSM - HSI coregistration (Tab. 3).

To evaluate the estimate affine parameters, 83 points were manually measured in HSI and LiDAR DSM (Tab. 2). Parameters

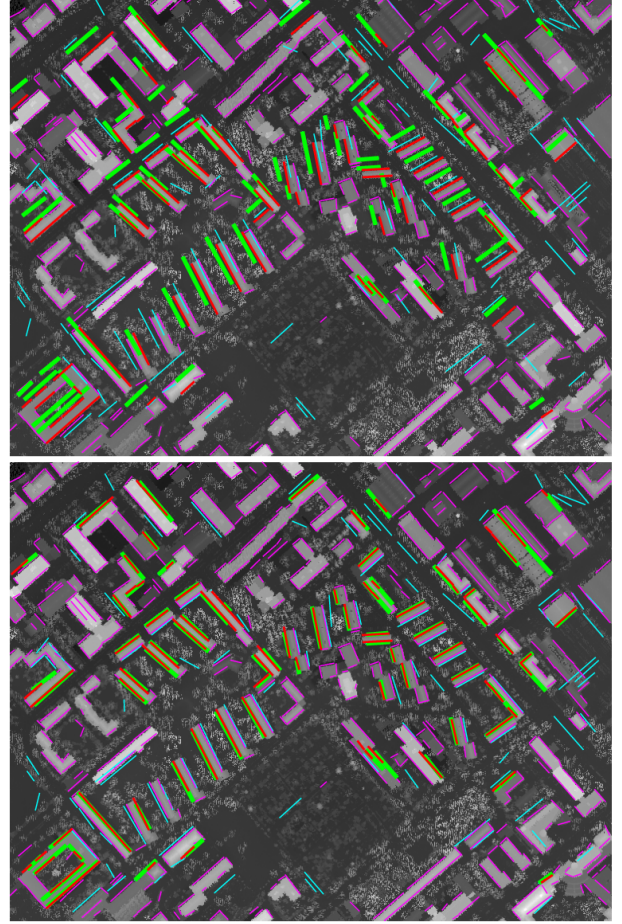


Figure 4: Detected lines in LiDAR DSM and HSI, before (top) and after coregistration (bottom). Line colours as described in Fig. 3.

	Manual Points
$h_1 \pm \sigma_{h1}$	$0.9957 \pm 0.0006$
$h_2 \pm \sigma_{h2}$	$-0.0023 \pm 0.0008$
$h_3 \pm \sigma_{h3}$	$14.8674 \pm 0.2874$
$h_4 \pm \sigma_{h4}$	$0.0030 \pm 0.0008$
$h_5 \pm \sigma_{h5}$	$1.0026 \pm 0.0006$
$h_6 \pm \sigma_{h6}$	$11.3304 \pm 0.2874$

Table 2: Estimated affine parameters for LiDAR DSM and HSI with manual selected tie points.

	Buildings	Lines
$h_1 \pm \sigma_{h1}$	$1.0010 \pm 0.0006$	$1.0015 \pm 0.0008$
$h_2 \pm \sigma_{h2}$	$-0.0017 \pm 0.0010$	$0.0002 \pm 0.0012$
$h_3 \pm \sigma_{h3}$	$0.1629 \pm 0.0639$	$1.7865 \pm 0.0711$
$h_4 \pm \sigma_{h4}$	$0.0027 \pm 0.0007$	$0.0018 \pm 0.0008$
$h_5 \pm \sigma_{h5}$	$1.0005 \pm 0.0010$	$0.9999 \pm 0.0014$
$h_6 \pm \sigma_{h6}$	$-0.8919 \pm 0.0698$	$0.2276 \pm 0.0772$

Table 3: Estimated affine parameters for 3K DSM and HSI using extracted building outlines and lines.

estimated from automatic building outlines (Tab. 1) and manual measured tie points (Tab. 2) are not exactly the same. Measuring tie points in HSI is not a trivial task, because image composite of only three channels can be used at the same time. So, the manual measured tie points depend on the channel selection and the material of the surroundings, where tie point is set. We conclude, that manual measurement of tie point is HSI images of given resolution (2 m) is not sufficient for evaluation of proposed

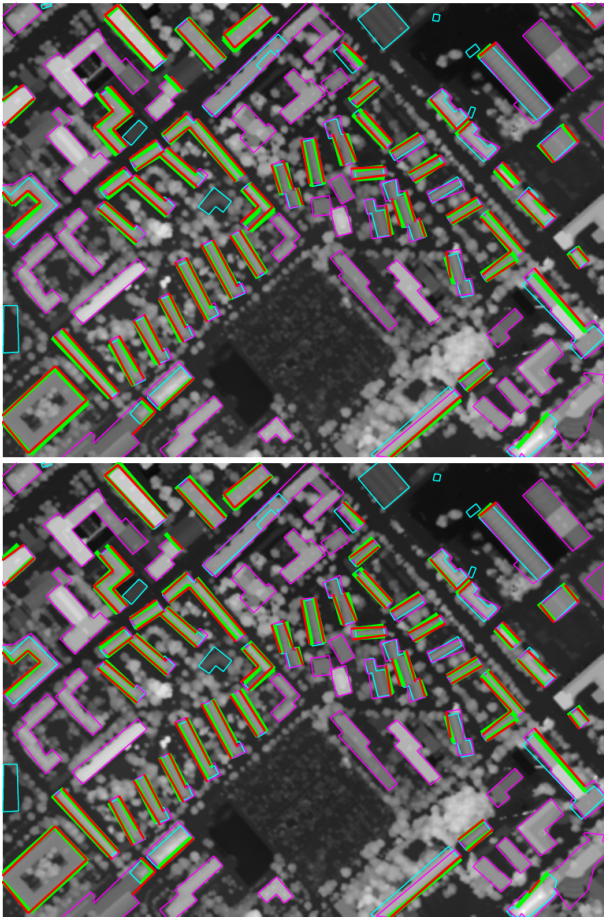


Figure 5: Detected buildings in 3K DSM and HSI, before (top) and after coregistration (bottom). Line colours are analogue to description under Fig. 3.

coregistration method.

## 5 DISCUSSION AND FUTURE WORK

We proposed a method for coregistration of HSI and DSM using lines from detected building outbounds using homogeneous coordinates for line assignment and transformation parameter estimation. The method can be applied on multi-modal and multi resolution datasets. Estimating building outlines instead of lines provide larger amount of assigned lines between the images, and is thus more reliable to estimate transformation parameters.

Detecting only the lines belonging to the same object in HSI and DSM allows incorporating prior knowledge about the observed object. For example, rectilinearly of building boundaries can be introduced to improve the building outline detection and consequently transformation parameter estimation. Additional knowledge about shapes of observed object is specially important for images with lower spatial resolution or for automatic generated DEM with missing values.

For more efficient line assignment, building outlines with topology should be implemented. Furthermore, the building outline detection with model selection must be evaluated for positional accuracy of detected lines. Introducing these line accuracies into the determination of transformation parameters showed good results, so investigations about influence of line accuracies on transformation parameters will be carried out.

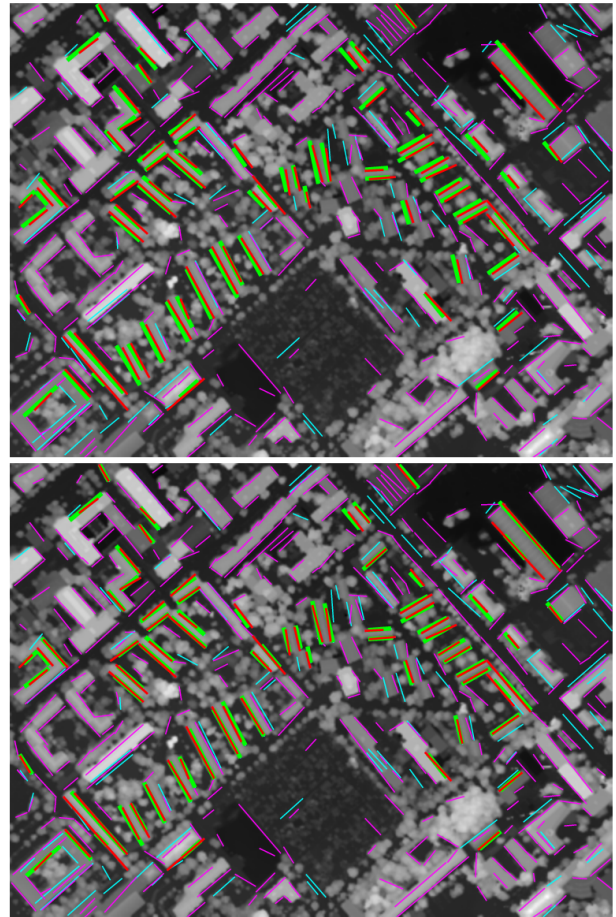


Figure 6: Detected lines in 3K DSM and HSI, before (top) and after coregistration (bottom). Line colours are analogue to description under Fig. 3.

## REFERENCES

- Avbelj, J., 2012. Spectral information retrieval for sub-pixel building edge detection. *ISPRS Annals of Photogrammetry, Remote Sensing and Spatial Information Sciences I-7*, pp. 61–66.
- Chang, C.-I., 2000. An information-theoretic approach to spectral variability, similarity, and discrimination for hyperspectral image analysis. *IEEE Transactions on Information Theory* 46(5), pp. 1927–1932.
- Debevec, P., Taylor, C. and Malik, J., 1996. Modelling and rendering architecture from photographs: a hybrid geometry- and image-based approach. In: *Proceedings of the 23rd Annual Conference on Computer Graphics and Interactive Techniques*, pp. 11–20.
- Gerke, M., Straub, B. M. and Koch, A., 2001. Automatic detection of buildings and trees from aerial imagery using different levels of abstraction. *Publications of the German Society for Photogrammetry and Remote Sensing* 10, pp. 273280.
- Hartley, R. I. and Zisserman, A., 2004. *Multiple View Geometry in Computer Vision*. Second edn, Cambridge University Press, ISBN: 0521540518.
- Heuel, S., 2002. *Statistical Reasoning in Uncertain Projective Geometry for Polyhedral Object Reconstruction*. PhD thesis, Photogrammetry Department, Institute for Geodesy and Geoinformation, Bonn University, Germany, Nussallee 15, 53115 Bonn, Germany.

Iwaszczuk, D., Hoegner, L., Schmitt, M. and Stilla, U., 2012. Line based matching of uncertain 3d building models with ir image sequences for precise texture extraction. *Photogrammetrie, Fernerkundung, Geoinformation (PFG)* 2012(5), pp. 511–521.

Keshava, N., 2003. A survey of spectral unmixing algorithms. *Lincoln Laboratory Journal* 14(1), pp. 5578.

Kruse, F., Lefkoff, A., Boardman, J., Heidebrecht, K., Shapiro, A., Barloon, P. and Goetz, A., 1993. The spectral image processing system (SIPS) interactive visualization and analysis of imaging spectrometer data. *Remote Sensing of Environment* 44(2-3), pp. 145–163.

Kurz, F., Türmer, S., Meynberg, O., Rosenbaum, D., Runge, H., Reinartz, P. and Leitloff, J., 2012. Low-cost optical camera systems for real-time mapping applications. *PFG Photogrammetrie, Fernerkundung, Geoinformation* 2012(2), pp. 159–176.

Maas, H.-G. and Vosselman, G., 1999. Two algorithms for extracting building models from raw laser altimetry data. *ISPRS Journal of Photogrammetry and Remote Sensing* 54(23), pp. 153–163.

Ok, A., Wegner, J., Heipke, C., Rottensteiner, F., Sörgel, U. and Toprak, V., 2012. Matching of straight line segments from aerial stereo images of urban areas. *ISPRS Journal of Photogrammetry and Remote Sensing* 74, pp. 133–152.

Pluim, J. P. W., Maintz, J. B. A. and Viergever, M. A., 2003. Mutual-information-based registration of medical images: a survey. *Medical Imaging, IEEE Transactions on* 22(8), pp. 9861004.

Schenk, T., 2004. From point-based to feature-based aerial triangulation. *ISPRS Journal of Photogrammetry and Remote Sensing* 58, pp. 315–329.

Sohn, G. and Dowman, I., 2007. Data fusion of high-resolution satellite imagery and LiDAR data for automatic building extraction. *ISPRS Journal of Photogrammetry and Remote Sensing* 62(1), pp. 43–63.

Stilla, U., 1995. Map-aided structural analysis of aerial images. *ISPRS Journal of photogrammetry and remote sensing* 50(4), pp. 3–10.

von Gioi, R., Jakubowicz, J., Morel, J.-M. and Randall, G., 2010. LSD: a fast line segment detector with a false detection control. *IEEE Transactions on Pattern Analysis and Machine Intelligence* 32(4), pp. 722–732.

Zeng, H., Deng, X. and Hu, Z., 2008. A new normalized method on line-based homography estimation. *Pattern Recognition Letters* 29(9), pp. 1236–1244.