

Effect of electroless coating parameters and ceramic particle size on fabrication of a uniform Ni–P coating on SiC particles

N. Beigi Khosroshahi^a, R. Azari Khosroshahi^a, R. Taherzadeh Mousavian^{b,n}, D. Brabazon^c

^aFaculty of Materials Engineering, Sahand University of echnology, Iran

^bDepartment of Metallurgy, Zanzan Branch, Islamic Azad University, Zanzan, Iran

^cAdvanced Processing Technology Research Centre, School of Mechanical & Manufacturing Engineering, Dublin City University, Dublin, 9, Ireland

Abstract

The formation of a uniform nickel phosphorous (Ni–P) electroless (EL) coating on micron-sized SiC particles was investigated in this study. Metal coated ceramic particles could be used in applications including as the fabrication of cast metal matrix composites. Such ceramic particles have a better wettability in molten metal. In this work, the effects of EL coating parameters, SiC particle size and morphology on the coating uniformity and mechanical bonding at the SiC/Ni–P interface were studied. The results indicated that etching treatment was very effective (especially for coarse powders) on the mechanical bonding at the interface. The optimum values of bath temperature and pH were determined to be 50 ± 2 °C and 8 ± 0.2 , respectively. The best uniformity and mechanical bonding were obtained for SiC particles with average particle size of 80 μm (considered relatively as coarse powders in this study). The ball milling of SiC particles (with the average particle size of 80 μm) for 1 h led to the formation of a multi-modal particle size distribution which resulted in a non-uniform quality of particulate coating. The larger SiC particles after ball milling were more completely covered by the Ni–P coating compared to the smaller more fragmented particles. The smaller ceramic particles processed via Ni–P EL coating lead to formation of segregated clusters of Ni–P and therefore such ceramic particles contained many uncoated parts.

Keywords: Ball mill; Electroless; Nickel phosphorous (Ni–P); SEM; SiC particles

1. Introduction

Metal-coated ceramic particles are composite powders with a ceramic core and metallic shell. These particles are more suitable for electrical, magnetic and chemical properties and have improved wettability compared to non-coated particles [1–11]. Poor binding between molten metal and non-coated ceramic particles is a consequence of their low wetting behavior. If high processing temperatures are used in composites manufacturing, interfacial degradation reactions can occur. Metallic coatings of nickel or copper are used to improve the wettability of reinforcement within the matrix material and thereby cause a good bond between matrix alloy and reinforcement. Metallic coatings have been reported to be achieved via various methods. Among these methods, the electroless nickel (EN) coating of the reinforcement is a simple, low-cost and an easy to use process. This process has been successfully applied to prevent undesired interfacial reactions and promote the wettability through increasing the overall surface energy of the reinforcement [1–8].

EN is an autocatalytic chemical reduction process in which the reducing agent is oxidized and Ni^{2+} ions are deposited (reduced) on the substrate surface. Once the first layer of Ni is deposited, it acts as a catalyst for the process. The vast majority of EN coatings are deposited by catalytic reduction of nickel ions with sodium hypophosphite (NaH_2PO_2).

Hypophosphite is one of the strongest reducing agents for the electroless Ni–P coating process which is much cheaper than electroless Ni–B coatings [9–15]. Several theories were proposed for the mechanism of the electroless nickel process using hypophosphite as a reducing agent. Brenner and Riddell suggested a well-known mechanism in this regard [12]. Full details of this mechanism have been reported elsewhere [11].

Recently, some researchers have reported the effect of various parameters on the adhesion, uniformity, and thickness of Ni–P layer on ceramic particles. Kilicarslan et al. reported that electroless nickel coating of the coarse B_4C particles (with an average particle size of 93 μm) resulted in better surface quality as compared to the fine B_4C particles (with an average particle size of 32 μm) [9]. They have used a constant pH and bath temperature as well as the same pre-treatment condition. Hajizamani et al. reported of the formation of Ni_3P nano-scale layer on B_4C nanoparticles in acidic bath using a constant pH and bath temperature as well as the same pre-treatment condition [10]. Their results were not in agreement with a study by Kilicarslan et al. [9], in which it was found that fine powders could not be covered completely by nickel coating. They used an attrition ball-mill to reduce the particle size of B_4C via continuous fragmentation of ceramic brittle powders. The ball-milling (mechanical alloying, MA) process is a wellknown method for metallic or ceramic based powders, in which fragmentation and/or mechanical activation occur. In fact, MA is a unique process in that a solid state reaction takes place between the fresh powder surfaces of the reactant materials at room temperature. Consequently, it can be used to produce alloys and compounds that are difficult or impossible to be obtained by using conventional melting and casting techniques [16]. Therefore, it is valuable to assess the effect on coating efficiency of combining the ball-milling and EN processes. In this study, micron-sized SiC ceramic powders were used for EN coating. The effect of pH, bath temperature, etching pretreatment, and the particle size as well as ball-milling of SiC powders was studied on the uniformity, mechanical bonding, mass gain %, and the deposition rate of the EN coatings.

2. Experimental procedures

2.1. Starting materials

In order to investigate the effect of ceramic particle size and morphology, three kinds of SiC powders were used in this study. The as-received SiC powders used in this study were in two forms: (i) 99.5% purity with an average particle size of 80 μm ; and (ii) 99.5% purity with an average particle size of 10 μm . A third form of the SiC powders was obtained via ball-milling of the SiC powder with an average particle size of 80 μm (form i) using a planetary high-energy ball mill. For this purpose, alumina balls with 7 mm diameter were used and the ball to powder weight ratio was 5:1. The powders were ball-milled for 1 h using a high-purity argon (99.99%) atmosphere with the rotating speed of 250 rpm.

Fig. 1 shows the morphology of the three kinds of SiC powder forms used in this study. Both SiC as-received powder particles have sharp corners, see Fig. 1a and b. Fracturing of SiC powders occurred during ball-milling leading to the formation of a mixture of coarse and fine powder particles, see Fig. 1c.

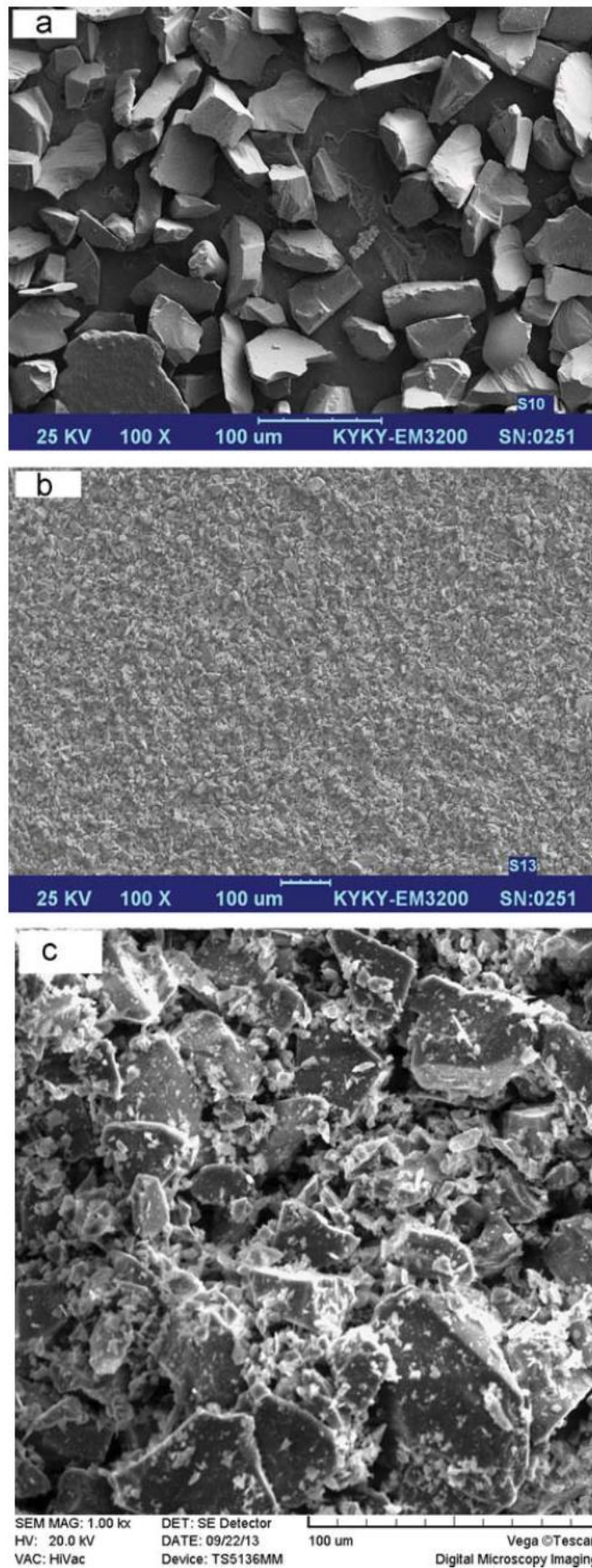


Fig. 1. The SEM morphology of as-received (a) 80 μm average particle size (coarse powders), (b) 10 μm average particle size (fine powders) and (c) the ball-milled powders.

2.1. Coating of SiC particles

The first step was cleaning the SiC powders using acetone to remove impurities from the surface. A SiC particulate in acetone loading concentration of 2 g/100 ml was used for each sample batch prepared in this work. Fig. 2 shows the flow chart of the Ni– P coating procedure. As can be seen in this figure, the powders were pre-treated in three steps after washing in acetone followed by progressive drying and electroless decomposition.

Table 1 presents the details of the chemicals used for pretreatment of the SiC powders, showing that all three steps were conducted at room temperature followed by drying at 90 °C for 2 h.

The composition and concentration of the materials used for the EN bath for the coating process are presented in Table 2. All the procedures were carried out with a magnetic stirring speed of 400 rpm.

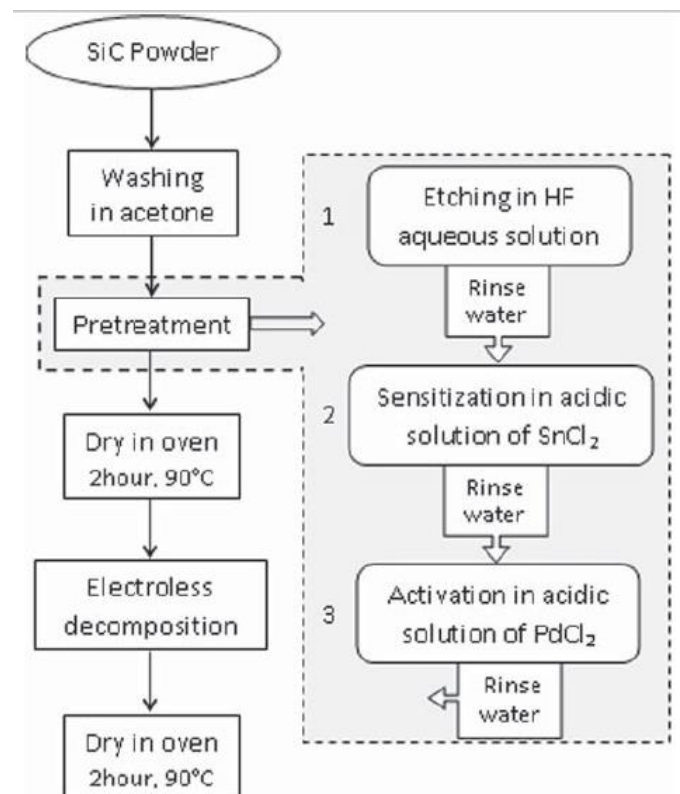


Fig. 2. Flow chart of preparation procedure of Ni–P coated particles.

Table 1
Details of the three SiC powder pre-treatment conditions, chemicals and washing cycle used.

		Composition	Concentration	Time	Temperature
1	Washing	Acetone	100 ml	10 min	25 °C
	Coarsening (making a rough surface)	HF (40%) NaF	100 ml/l 2 g/l	10 min	
	Washing in distilled water for several times				
2	Sensitization	SnCl ₂ HCl (37%)	10 g/l 0.5 ml/l	15 min	25 °C
	Washing in distilled water for several times				
3	Activation	PdCl ₂ HCl (37%)	0.05 g/l 0.1 ml/l	15 min	25 °C
	Washing in distilled water for several times				
	Washing in distilled water for several times				

Table 2
Composition of bath used for electroless dopsition of Ni–P coating on SiC particles.

Role in bath	Composition		Concentration
Main salt	Nickel sulfate	$\text{NiSO}_4 \cdot 6\text{H}_2\text{O}$	25 g/l
Reducing agent	Sodium hypophosphite	$\text{NaH}_2\text{PO}_2 \cdot \text{H}_2\text{O}$	27.6 g/l
Complexing agent	Tri-sodium citrate	$\text{C}_6\text{H}_5\text{Na}_3\text{O}_7 \cdot 2\text{H}_2\text{O}$	46 g/l
Buffering agent	Acid boric	H_3BO_3	26 g/l
pH adjuster	Sodium hydroxide	NaOH	To adjust pH
SiC powder			0.5 g/100 ml

Table 3
The experimental conditions of sample production. * indicates that etching treatment was used.

Sample	SiC particle size	pH	Temperature (°C)	Etching treatment
S ₁	80 μm	9	70	–
S ₂		9	70	
S ₃		8	60	*
S ₄		8	50	
S ₅	10 μm	9	70	–
S ₆		9	70	
S ₇		8	60	*
S ₈		8	50	
S ₉	Ball-milled	9	70	–
S ₁₀		9	70	
S ₁₁		8	60	*
S ₁₂		8	50	

Table 3 shows the condition of the samples fabricated in this study. As this table indicates, four important parameters were studied. Some samples were also prepared without etching treatment in order to investigate the etching treatment effect. Also, two temperatures and several pH values were selected for all three forms of SiC particles.

2.3. Characterization

Two terms of deposition rate and mass gain percent were calculated in accordance with Eqs. (1) and (2):

$$\text{Mass gain (\%)} = \left[\frac{(W_f - W_i)}{W_m} \right] \times 100 \quad (1)$$

$$\text{Deposition rate} = \left[\frac{(W_f - W_i)}{t} \right] \times 100 \quad (2)$$

where W_f is the weight of coated SiC powders, W_i is initially weight of SiC powders, W_m is the weight of Ni–P in the bath that could be deposited on the particles, and t is the time of deposition, which was evaluated after the pH reached to a constant value.

As mentioned, the EN deposited coating could avoid the reaction between ceramic particles and metallic matrix such as aluminum during fabrication of metal matrix composites. In order to evaluate the effect of the EN coating on reaction between the coated Sic particles and the aluminum matrix, the same weight of aluminum powder and EN SiC particles was mixed and

exposed to a differential scanning calorimeter (DSC) analysis. Also, DSC analysis was carried out to detect the phase transformation during an ascending temperature profile. A Netzsch STA 409 (Germany) analyzer with a maximum working temperature of 1500 1C was used for these measurements with high-purity corundum used as a reference. Powder samples of E30 mg were loaded and pressed into an alumina crucible, which does not react with the powder, and heated up in an inert argon atmosphere at rate of 10 1C/min. It should be noted that a microstructural study was applied to assess if the coating layer could be retained on the ceramic particles after incorporation into the molten aluminum.

For this purpose, a specific amount of pure aluminum was melted and stirred for 6 min using a graphite stirrer at 680 °C and simultaneously the Ni coated SiC particles were incorporated into the molten metal. After this time, the composite was solidified by pouring into a steel mold.

Samples S₂ and S₄ of EN SiC powders were exposed to X-ray analysis (Bruker's D8 advance system, Germany) using Cu K α ($\lambda=0.15405$ nm) radiation. X-ray phase analysis of the coated particles was conducted to detect if any other phases were formed and present besides the Ni–P and SiC phases. Also, the peak intensity of these phases was compared for S₂ and S₄ to detect if the Ni–P coating would reduce the SiC phase intensity. Microstructural investigations were performed using two kinds of scanning electron microscope (SEM, Cam Scan Mv2300, equipped with EDAX analysis and SEM, KYKY-EM3200).

3. Results and discussion

Fig. 3 shows the effect of etching pre-treatment on the mass gain percent of coarse, fine, and ball milled powders. The largest mass gain was observed for etched coarse SiC powders in which a 60% increase in mass was recorded compared to the non-etched powder. This figure indicates that no considerable change in mass gain % was observed for both fine and ballmilled powders after etching pre-treatment. A higher value of mass gain % was obtained for S₂ compared to S₁, which shows that the growth mechanism of deposited nickel changed after etching pre-treatment. From these results it can be concluded that by increasing the specific surface area of the powders, the effect of etching pre-treatment became negligible.

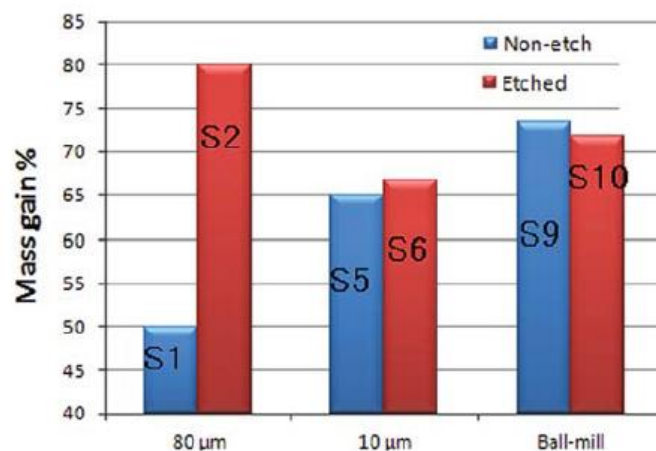


Fig. 3. Effect of etching process on mass gain % of the samples.

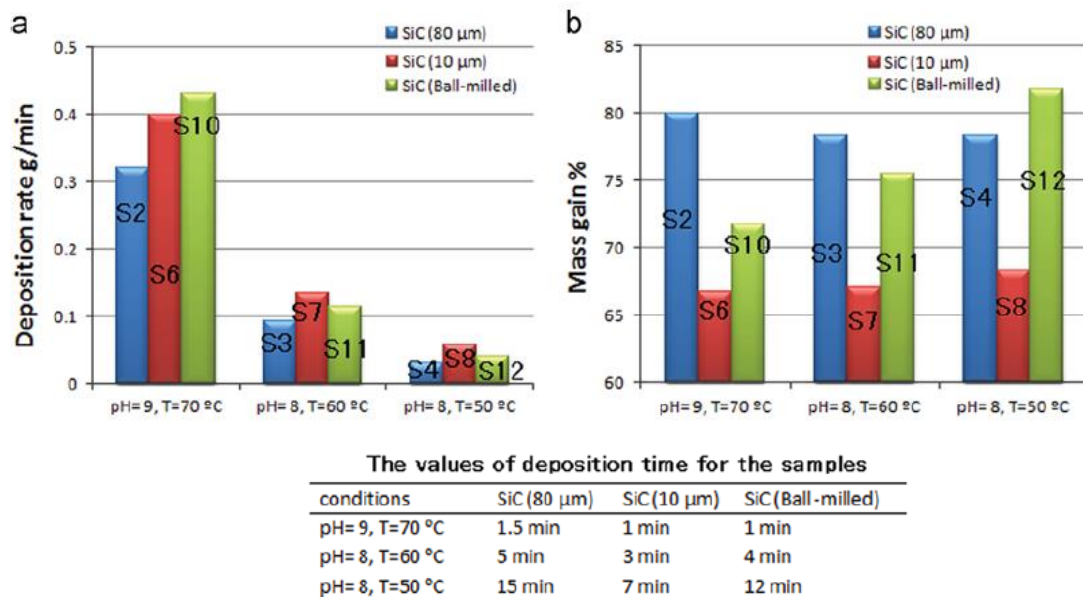


Fig. 4. Effect of pH and bath temperature on mass gain % and deposition rate.

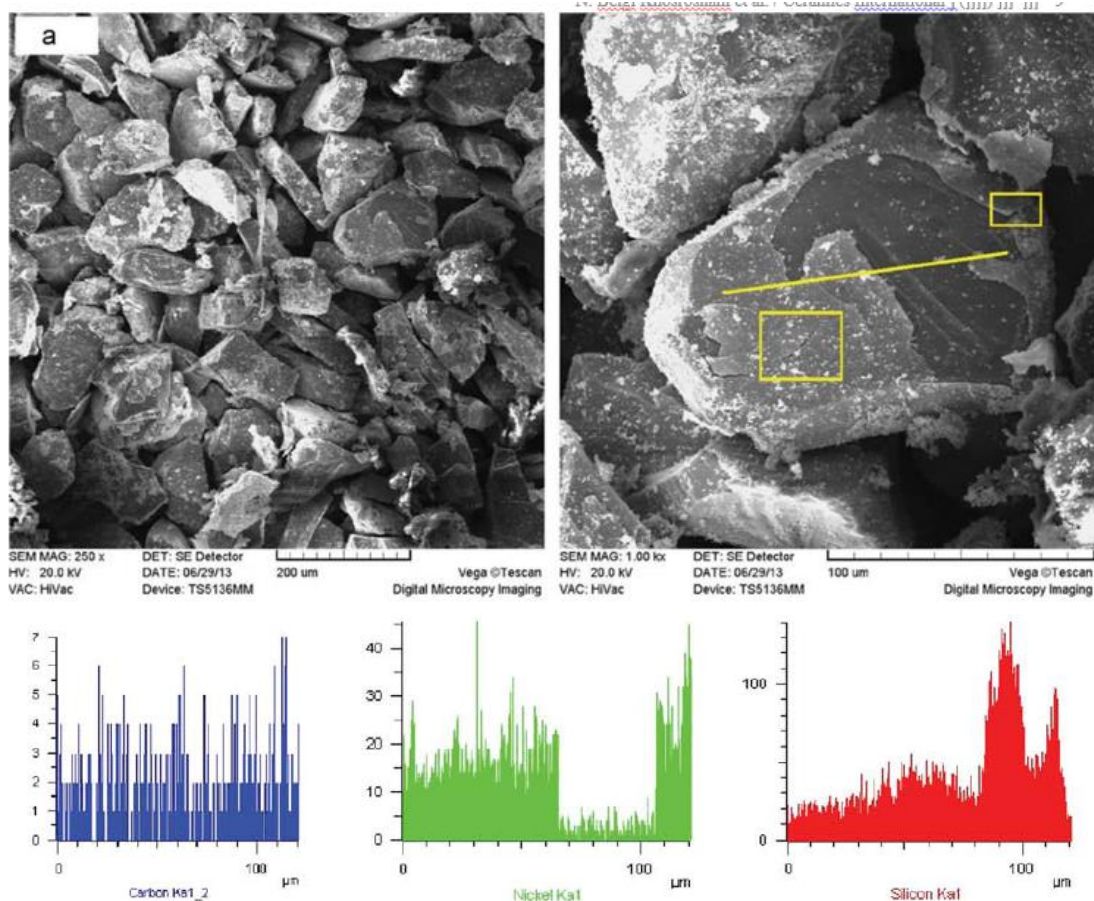
Fig. 4 shows the effect of pH and bath temperature on mass gain % and deposition rate of coarse, fine and ball-milled samples. The results in Fig. 4a show that there was a significant reduction of deposition rate at reduced pH and bath temperature. As can be seen, the deposition times of the etched coarse and ball-milled powders increased from 1.5 to 15 min and 1 to 12 min, respectively, by decreasing the pH and bath temperature. This time was not as significantly increased for the etched fine powders, in which just a 6 min increase was observed (from 1 min to 7 min) by decreasing the pH and bath temperature. Fig. 4b shows that the mass gain variation was not as significantly affected by variation in the pH and bath temperature for the as received SiC powders (both coarse and fine powders); whereas by decreasing the pH and bath temperature, a notable increase in mass gain % was recorded for the ball-milled powders. It can be observed that the least amount of mass gain % occurred for the fine as received powders under all three processing conditions (see Fig. 4b). By reduction of pH and bath temperature, the mass gain % of the ball-milled powders was higher than that of the coarse powders. The maximum amount of mass gain % at about 81 % was obtained for ball-milled samples at pH 8 and bath temperature=50 °C. In conclusion, three important points could be inferred from what shown in Fig. 4. Firstly, by reduction of pH and bath temperature the deposition time will be increased for all types of powders. Secondly, in contrast with ball-milled powders, variations of pH and bath temperature did not significantly change the mass gain % of fine and coarse powders.

Thirdly, on the basis of these results, the actual amount of the metal layer deposited onto the ceramic surface could not be quantitatively verified. This latter conclusion is due to the fact that the ED process might lead to the formation metal clusters, which are separated from the ceramic surface.

In order to evaluate the results of mass gain % and deposition rate, SEM images were used as well as EDAX analysis. Fig. 5a shows an SEM image of sample S₁ (coarse powders), which was not exposed to etching pre-treatment. Some uncoated parts could be seen on the powder surfaces, and it seems that micron-cracks were present on some parts of the powder surfaces. However, the coating layer seems to be very thin and have good mechanical bonding in many parts between the coating and the ceramic particles. Another important result noted here is that there was no formation of segregated nickel globules and clusters independent of the

particles for this sample. Fig. 3 shows that the mass gain % for this sample was much lower than those of the other samples. The line EDAX analysis on the particle surface with some uncoated sections, indicated as expected the presence of nickel in coated regions. Fig. 5b shows the microstructure of EN coated S_2 pertaining to coarse powders that were exposed to the etching pre-treatment using HF acid.

This process led to an increase in the number of nucleation sites and removes the SiO_2 layer on the surface, enhancing the deposition velocity, resulting in the formation of segregation of nickel deposits. In fact, nickel in some cases did not have enough time for deposition and attachment to the SiC surface. The white rectangles in this figure show flakes of EN coating detached from the ceramic surfaces. Fig. 3 shows that the maximum amount of mass gain % was obtained for this sample. It seems that most of the ceramic powder particles were coated during EN. The intensity of nickel obtained by line EDAX analysis was higher than for that found from the previous sample, which could be due to an increase in the thickness of the coating. Fig. 5c shows the microstructure of the coarse particles (sample S_4) after etching treatment, coated using the lower bath temperature ($50\text{ }^\circ\text{C}$) and pH (8). The mass gain % was considerable for this sample (see Fig. 4b). No uncoated parts of the surface could be seen and the thickness and mechanical bonding appeared to be very good. The red rectangles show regions where globular-like segregated nickel deposits were not separated from the particles, indicating good adhesion of the deposited phases for the EN coating.



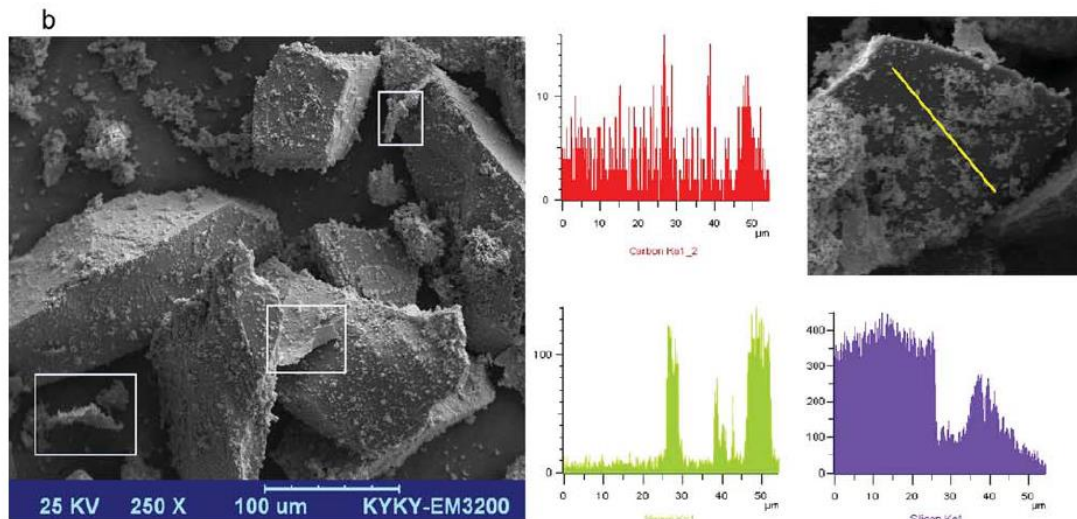


Fig. 5. Low and high magnifications SEM images and EDAX analysis of selected samples: (a) S₁, (b) S₂, (c) S₄, (d) S₈, (e) S₉, (f) S₁₀, and (g) S₁₂.

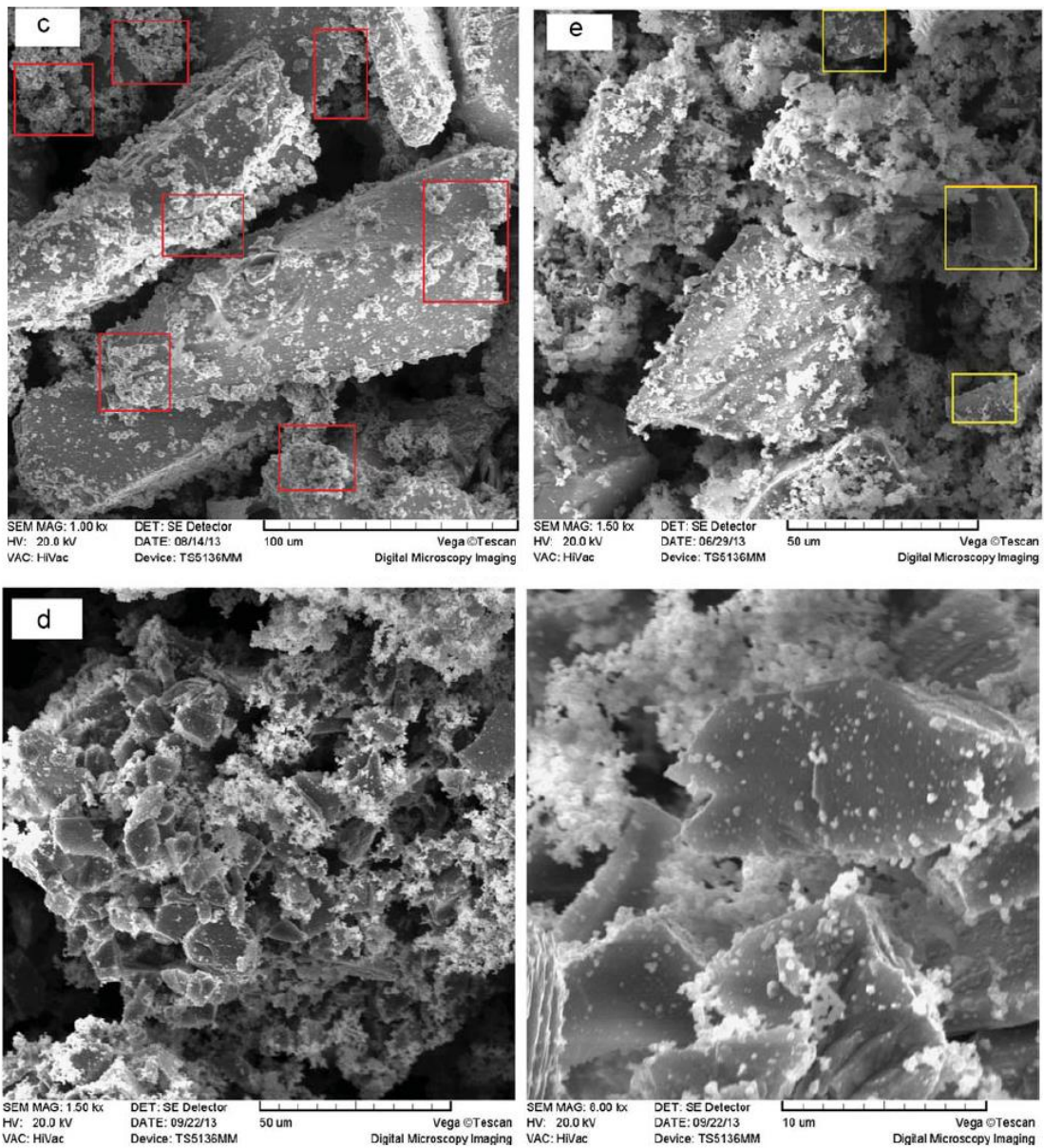


Fig. 5. (continued)

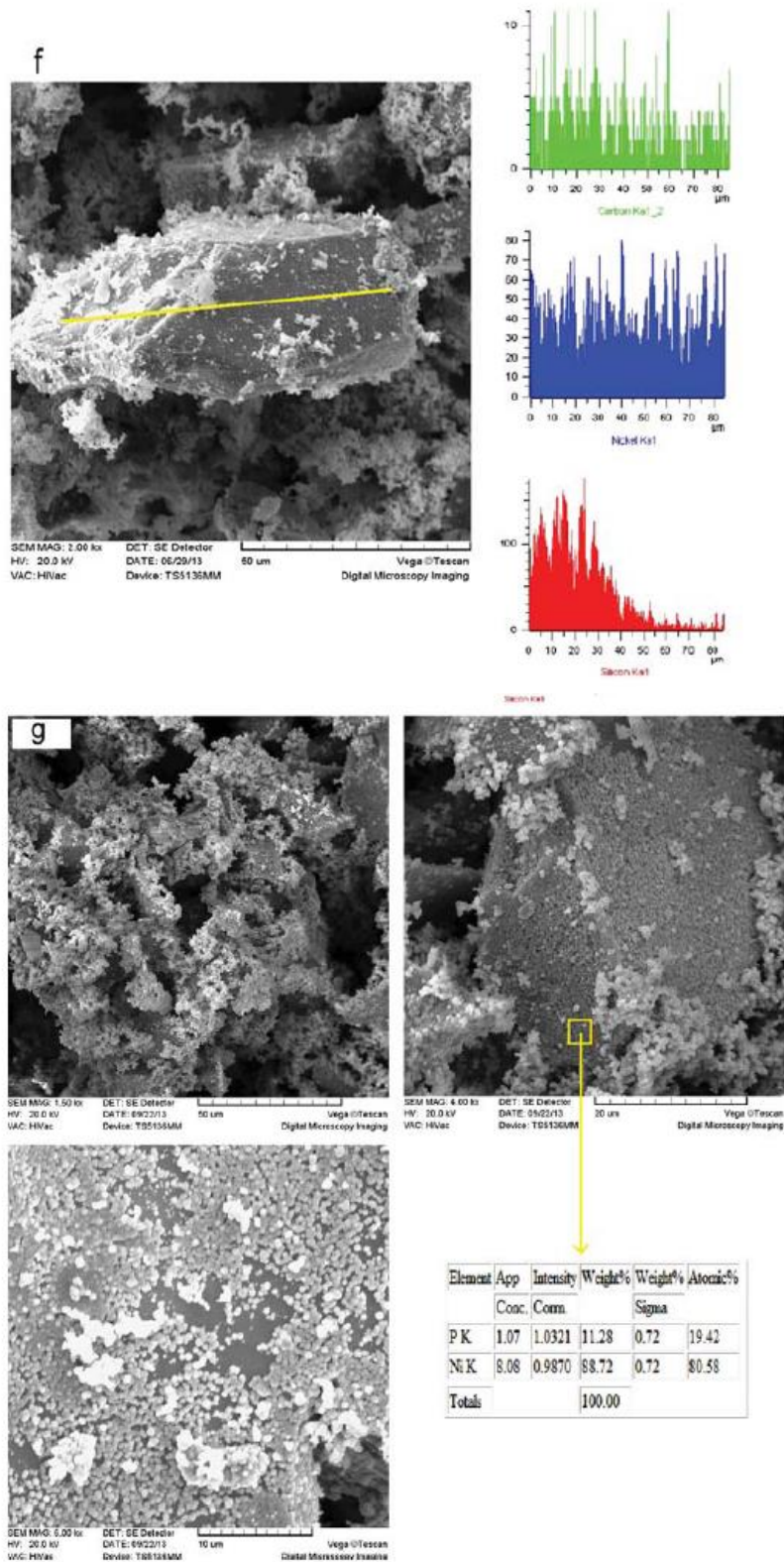


Fig. 5. (continued)

As Fig. 4b indicates, fine SiC powders were not highly coated by EN. Fig. 5d shows that fine etched SiC powders coated at pH 8 and bath temperature of 50 °C were not completely covered by EN coating (sample S₈). Many nickel-free SiC surface regions could be observed in Fig. 5d. It seems that the main phenomena during the EN coating of this sample was the

segregation of nickel clusters and with only some small globules of nickel forming on the surface of the SiC particle resulting in poor coating quality for this sample. Fig. 5e and f shows the effect of ball-milling of coarse powders without (sample S₉) and after (sample S₁₀) etching treatment, respectively, on the morphology and mechanical bonding of EN coating. It can be observed from Fig. 3 that the mass gain % for this ball milled sample (S₉) was higher than for the coarse and fine powders, and that the etching treatment did not significantly change the mass gain % value. No continuous adhesive layer of nickel could be observed on the particles for samples S₉ and S₁₀. It seems that a distinctive deposition mechanism has taken place for the ball-milled samples. Fig. 4a indicated that the maximum amount of deposition rate occurred for the ball-milled sample at pH 9 and bath temperature of 70 °C. Fig. 5g and f shows globules of nickel deposits as separated clusters, which it seems as though they did not have enough time to settle and attached to the particles.

Fig. 5g shows the morphology of sample S₁₂, in which coarse powders were ball-milled followed by etching treatment. However, in contrast with S₉ and S₁₀, for this sample, the pH and bath temperature were 8 and 50 °C, which lead to the highest mass gain % (see Fig. 4b) and close to the lowest deposition rate (see Fig. 4a). A reduction in deposition rate might cause the deposits to slowly settle on the particle, allowing for a better coating quality with strong mechanical bonding as well as a better uniformity. However, it seems that the presence of nickel separated clusters is inevitable for fine and ball-milled powders. Fig. 5g also shows some nickel free regions on the ceramic surfaces, indicating that the nickel globules were not deposited to completely cover the surface even for this sample.

Table 4 presents a summary of the results for the selected samples of Fig. 5. As regards etching pre-treatment effect, it should be noted that this process has been used to make a rough surface suitable for metal deposition.

Table 4
Summary of the results obtained for each specimen.

Sample characteristics	Results
Coarse powders, pH 9, T=70 °C, without etching	Incomplete coating, no segregation of nickel globules, and minimum amount of mass gain %
Coarse powders, pH 9, T=70 °C, with etching	High amount of mass gain %, good uniformity, and segregation of nickel globules
Coarse powders, pH 8, T=50 °C, with etching	Considerable mass gain %, improved mechanical bonding, good uniformity, and adhesion of segregated nickel globules to the particles
Fine powders, pH 8, T=50 °C, with etching	Low amount of mass gain %, segregation of nickel clusters, poor coating quality
Ball-milled, pH 9, T=70 °C, without etching	High amount of mass gain %, considerable segregation of nickel clusters, inhomogeneity of coating
Ball-milled, pH 9, T=70 °C, with etching	High amount of mass gain %, considerable segregation of nickel clusters, inhomogeneity of coating
Ball-milled, pH 8, T=50 °C, with etching	Maximum amount of mass gain %, better coating quality with stronger mechanical bonding as well as a better uniformity in comparison with the previous ball-milled samples

Although both as-received and ballmilled powders have a layer of SiO₂ and this layer will be removed for all ranges of powder size after HF addition, the etching process will not be effective for the ball-milled powders. Fig. 1c shows that the ball milling of a brittle ceramic compound made a rough surface during continuous fracturing. The etching process did not seem to contribute to the surface roughness on these samples. As regards fine powders, it should be noted that the etching process was effective however the nickel layer could not be deposited on these particles. It appears that it is not an easy task to coat nickel on fine ceramic powders below 30 μm via the ED process.

Fig. 6 shows the XRD patterns of samples S₂ and S₄. Figs. 5b and c and 4 show further the EN coating for these samples. Fig. 6 shows the detection of SiC, Ni₈P₃, Ni, and P phases (the presence of phosphorous and its compounds was previously reported in EN using hypophosphate compound) in the spectrum from sample S₂ (see Fig. 6a), while similar peaks and phases were recorded albeit with lower intensity for sample S₄.

changes in the DTA response occurred. An exothermic peak, which is related to the crystallization of the electroless nickel coatings, was revealed at about 350 1C [17], while an endothermic peak corresponding to the melting of aluminum was revealed at about 640 1C. Two exothermic peaks below the melting point of aluminum were detected for this sample, which our previous studies have shown that these peaks may be related to the reactions between Ni and Al to form intermetallic phases of Al–Ni bindery systems. Finally, an exothermic peak was revealed at about 850 1C, which it seems that this peak is possibly pertaining to the reaction between Al with uncoated parts of the SiC particles. The intensity of this exothermic peak is not relevant meaning that there was not an intensive reaction between aluminum and SiC.

This result indicates that cast Al-based matrix composites could be fabricated at even 700–800 1C without Al₄C₃ formation using a nickel coating on the reinforcement. However, this conclusion depends on nickel remaining during incorporation and melt stirring. Another important point is the possible formation of Al₃Ni₂, AlNi₃, Al₃Ni, and AlNi intermetallic phases [1,3–5,7] where nickel coated reinforcement phase was incorporated into the molten aluminum. These two exothermic peaks below the melting of aluminum (see Fig. 7) might show the formation of NiAl₃ and/or Ni₂Al₃ as reported in the literature [1,3,5,7]. For the purpose of investigating this, the powders of sample S₄ were incorporated into a melt of pure aluminum using the vortex casting method.

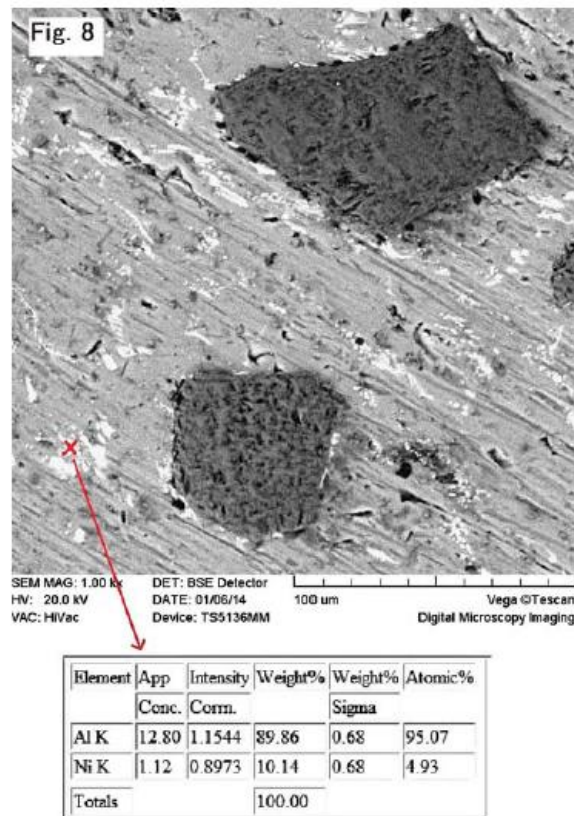


Fig. 8. The SEM/EDAX study of aluminum matrix composite reinforced with Ni-coated SiC particles.

Fig. 8 shows the SEM image of as-cast aluminum matrix composite. As can be seen, two SiC particles were embedded in the aluminum matrix and a discontinuous layer (in white color) was present around the particles. Point EDAX analysis of this layer is also shown in

Fig. 8. This analysis shows the presence of about 5 wt% Ni in these phases. From this figure, it can be seen that the nickel layer did not completely remain on the surface of ceramic particles during their incorporation and stirring. Chemical reaction between aluminum and SiC might therefore take place at the uncoated surface when the casting temperature is higher than 700 1C.

4. Conclusions

This study was undertaken to evaluate the effects of EL coating parameters, SiC particle size and morphology on the coating uniformity and mechanical bonding at SiC/Ni–P interface. From the experimental results, the following conclusions were determined.

- 1- Etching pre-treatment using hydrofluoric (HF) acid was very effective on enhancing the mechanical bonding at the interface, however, a considerable mass gain was revealed after etching pre-treatment only for large-sized SiC particles.
- 2- The maximum amount of mass gain was obtained for bath temperature and pH of 5072 1C and 870.2, respectively.
- 3- It was shown that a better uniformity and mechanical bonding were obtained for SiC particles with average particle size of 80 μm rather than of 10 μm .
- 4- Ball milling of SiC particles (with the average particle size of 80 μm) for 1 h led to the formation of a multi-modal particle size distribution, and therefore, a non-uniform distribution of coating quality was obtained for the particles. Large-sized SiC particles after ball milling were more completely covered by Ni–P coating compared to the smaller fragmented particles.
- 5- It was noted that a decreasing in ceramic particle size in Ni–P EL coating might lead to formation of the Ni–P segregated clusters and ceramic particles with many uncoated parts.
- 6- The maximum amounts of mass gain and deposition rate were obtained for ball-milled and 80 μm particles.
- 7- The XRD results indicated that the intensity of SiC peaks was decreased by decreasing the pH value possibly due to a reduction in crystallite size.
- 8- The DSC and XRD results indicated that the Ni–P coating was deposited in an amorphous form. Also, it was found that the presence of Ni–P coating on SiC particles could lead to a reaction between nickel and aluminum in solidstate form before the melting of aluminum. The presence of the coating shifted the reaction of aluminum and SiC to a higher temperature and with a considerably lower intensity.

References

- [1] A. Urena, J. Rams, M. Campo, M. Sanchez, Effect of reinforcement coatings on the dry sliding wear behaviour of aluminum/SiC particles/ carbon fibres hybrid composites, *Wear* 266 (2009) 1128–1136.

- [2] C.S. Ramesh, R. Keshavamurthy, B.H. Channabasappa, A. Ahmed, Microstructure and mechanical properties of Ni–P coated Si₃N₄ reinforced Al6061 composites, *Mater. Sci. Eng. A* 502 (2009) 99–106.
- [3] J. Pázmán, V. Máday, J. Tóth, Z. Gácsi, Investigation of the electroless nickel plated SiC particles in metal matrix composites, *Powder Metall. Prog.* 10 (2010) 102–109.
- [4] C.A. Leon-Patiño, R.A. Drew, Role of metal interlayers in the infiltration of metal–ceramic composites, *Curr. Opin. Solid State Mater. Sci.* 9 (2005) 211–218.
- [5] B. Dikici, C. Tekmen, M. Gavgali, U. Cocen, The effect of electroless Ni coating of SiC particles on the corrosion behavior of A356 based squeeze cast composite, *Stroj. Vestn. – J. Mech. Eng.* 57 (2011) 11–20.
- [6] F. Kretz, Z. Gacsi, J. Kovacs, T. Pieczonka, The electroless deposition of nickel on SiC particles for aluminum matrix composites, *Surf. Coat. Technol.* 180 (2004) 575–579.
- [7] C.A. Leon, R.A.L. Drew, The influence of nickel coating on the wettability of aluminum on ceramics, *Composites Part A: Appl. Sci. Manuf.* 33 (2002) 1429–1432.
- [8] L. Dobrzański, M. Kremzer, J. Konieczny, The influence of Ni–P layer deposited onto Al₂O₃ on structure and properties of Al –Al₂O₃ composite materials, *J. Achiev. Mater. Manuf. Eng.* 46 (2011) 147–153.
- [9] A. Kilicarlan, F. Toptan, I. Kerti, Electroless nickel–phosphorus coating on boron carbide particles, *Mater. Lett.* 76 (2012) 11–14.
- [10] M. Hajizamani, A. Alizadeh, N. Ehsani, Deposition of a Ni₃P nano-scale layer on B₄C nanoparticles by simple electroless plating in an acidic bath, *Appl. Nanosci.* 2 (2012) 417–421.
- [11] G.V. Babu, M. Palaniappa, M. Jayalakshmi, K. Balasubramanian, Electroless Ni–P coated on graphite as catalyst for the electro-oxidation of dextrose in alkali solution, *J. Solid State Electrochem.* 11 (2007) 1705–1712.
- [12] A. Brenner, G.E. Riddell, Nickel plating on steel by chemical reduction, *J. Res. Natl. Bur. Stand.* 37 (1946) 31–34.
- [13] G. Zou, M. Cao, H. Lin, H. Jin, Y. Kang, Y. Chen, Nickel layer deposition on SiC nanoparticles by simple electroless plating and its dielectric behaviors, *Powder Technol.* 168 (2006) 84–88.
- [14] E. Rudnik, K. Kokoszka, J. Łapsa, Comparative studies on the electroless deposition of Ni–P, Co–P and their composites with SiC particles, *Surf. Coat. Technol.* 202 (2008) 2584–2590.
- [15] M. Kang, J. Man Kim, J.W. Kim, Y.K. Kim, H. Chung, J.E. Yie, Simple and fast microwave-enhanced wet etching of SiC particles for electroless Ni–P plating, *Surf. Coat. Technol.* 161 (2002) 79–85.
- [16] C. Suryanarayana, Mechanical alloying and milling, *Prog. Mater. Sci.* 46 (2001) 1–184.
- [17] J.N. Balaraju, T.S.N.S Narayanan, S.K. Seshadri, Structure and phase transformation behaviour of electroless Ni–P composite coatings, *Mater. Res. Bull.* 41 (2006) 847–860.
- [18] N.M. Martyak, K. Drake, Peak-profile analysis of electroless nickel coatings, *J. Alloys Compd.* 312 (2000) 30–40.
- [19] S. Zhu, L. Tang, Z. Cui, Coating, Different thickness nickel–boron nanolayers onto boron carbide particles, *Surf. Coat. Technol.* 205 (2011) 2985–2988.