

RESEARCH ARTICLE

Open Access

Step-down versus outpatient psychotherapeutic treatment for personality disorders: 6-year follow-up of the Ullevål personality project

Bjørnar T Antonsen^{1,4*}, Ole Klungsoyr², Anne Kamps³, Benjamin Hummelen², Merete S Johansen⁴, Geir Pedersen⁴, Øyvind Urnes⁴, Elfrida H Kvarstein⁴, Sigmund Karterud^{1,4} and Theresa Wilberg²

Abstract

Background: Although psychotherapy is considered the treatment of choice for patients with personality disorders (PDs), there is no consensus about the optimal level of care for this group of patients. This study reports the results from the 6-year follow-up of the Ullevål Personality Project (UPP), a randomized clinical trial comparing outpatient individual psychotherapy with a long-term step-down treatment program that included a short-term day hospital treatment followed by combined group and individual psychotherapy.

Methods: The UPP included 113 patients with PDs. Outcome was evaluated after 8 months, 18 months, 3 years and 6 years and was based on a wide range of clinical measures, such as psychosocial functioning, interpersonal problems, symptom severity, and axis I and II diagnoses.

Results: At the 6-year follow-up, there were no statistically significant differences in outcome between the treatment groups. Effect sizes ranged from medium to large for all outcome variables in both treatment arms. However, patients in the outpatient group had a marked decline in psychosocial functioning during the period between the 3- and 6-year follow-ups; while psychosocial functioning continued to improve in the step-down group during the same period. This difference between groups was statistically significant.

Conclusions: The findings suggest that both hospital-based long-term step-down treatment and long-term outpatient individual psychotherapy may improve symptoms and psychosocial functioning in poorly functioning PD patients. Social and interpersonal functioning continued to improve in the step-down group during the post-treatment phase, indicating that longer-term changes were stimulated during treatment.

Trial registration: NCT00378248.

Keywords: Personality disorder, Psychotherapy, Level of care, Long-term follow-up

Background

Although psychotherapy is a cornerstone in the treatment of personality disorders (PDs), there is little empirical evidence regarding how different levels of psychotherapeutic care may affect treatment outcome [1-3]. Gunderson et al. [4] described “level of care” as a multi-dimensional construct that includes a variety of aspects, such as containment, intensity, the structure and duration of

treatment, and cost. From an organizational perspective, the term “level of care” usually refers to whether treatment is offered as inpatient hospitalization, day hospital or outpatient treatment, regardless of the duration and intensity of therapy or whether it is conducted in an individual or group format. During the past couple of decades, several studies have demonstrated that therapies offered in outpatient, day hospital, and inpatient settings have a positive effect on patients with PDs [2,5,6]. However, few studies have directly compared different treatment settings. Recently, three Dutch multi-center studies compared treatments at different levels of care for patients with PDs.

* Correspondence: bjornar.antonsen@medisin.uio.no

¹Institute for Clinical Medicine, University of Oslo, Oslo, Norway

⁴Department of Personality Psychiatry, Clinic for Mental Health and Addiction, Oslo University Hospital, Oslo, Norway

Full list of author information is available at the end of the article

Their results suggested that more intensive treatment in day hospital or inpatient settings had beneficial outcomes compared with outpatient treatment [7-9]. However, these conclusions should be considered preliminary, as the allocation of patients was not based on randomization but on the expert opinions of clinicians.

In Europe in particular, treatment models have been developed that combine various levels of care for patients with PDs, known as step-down programs. Such programs consist of an initial intensive treatment in a day hospital or inpatient setting, followed by outpatient psychotherapy with a corresponding reduction in treatment intensity. Existing step-down programs tend to emphasize various group therapies or the combination of individual and group psychotherapy, and the treatment length is typically long-term [10,11]. Many functionally impaired patients with PDs are in need of long-term therapy and a comprehensive and integrative treatment approach [12]. Promising evidence suggests that step-down models have the potential to meet such needs for patients with severe PDs, particularly borderline PD [13-18]. However, only one step-down model has been tested in a randomized design. Fonagy and Bateman [13,14] found there were superior effects from an 18-month mentalization-based day treatment followed by outpatient group psychotherapy for another 18 months, compared with treatment as usual. Differences in outcome were still significant at 8-years follow-up [15]. So far, no randomized study has compared a step-down model with outpatient individual therapy, which appears to be the most realistic therapeutic alternative in Western societies.

Despite the assumption that patients with severe PDs might benefit from long-term treatment, there have been few randomized studies of therapies lasting more than 1 year for patients with severe PDs [14,19,20]. Also, while several studies have shown that treatment gains may be maintained for 1 or 2 years after treatment, few studies have investigated the long-term course of symptoms after treatment [15,17,21]. One might assume that, for a majority of patients, systematic psychotherapy would contribute to more adaptive personality functioning and increased resistance to future challenging life circumstances. However, naturalistic follow-along studies have revealed considerable variation over time in the clinical course of patients with PDs [22-25]. Therefore, we need more studies evaluating how treatment at various levels of care might influence the long-term course of symptoms and social adjustment.

The Ullevål Personality Project (UPP) is a randomized clinical trial (RCT) designed to investigate the effect of two treatment conditions: (1) a step-down program comprising short-term day hospital treatment followed

by a combination of long-term group and individual psychotherapy for a maximum of 4 years, or (2) outpatient individual psychotherapy. The results of the 8 month, 18 month and 3 year evaluation have been reported previously [26-28]. The initial hypothesis was that the step-down treatment program would yield better clinical outcomes than outpatient individual psychotherapy. However, despite the more extensive format of the step-down treatment, results from the 18-month and 3-year follow-up studies indicated that step-down treatment was not more effective than outpatient individual psychotherapy. In fact, there was a trend towards better results with the outpatient treatment; in particular, psychosocial functioning from 18 month to 3 years exhibited a significantly more favorable course in the outpatient treatment group. Yet, at the 3 year follow-up, approximately one third of the patients in both treatment arms were still participating in their study treatments, with the potential for further improvement.

This study aimed to compare long-term outcomes in the two treatment groups using a wide range of clinical measures. More specifically, we addressed three research questions:

1. Are there differences in overall clinical course, from baseline to 6 years follow-up on the primary outcome variables, i.e., psychosocial functioning, interpersonal problems, symptom distress, and quality of life?
2. Are there any differences in patterns of clinical course, on the primary outcome variables between the 3- and 6-year follow-ups?
3. Are there any differences in secondary outcome variables at 6-year follow-up, i.e., diagnostic status, self-harm/suicidality, vocational functioning, and use of health care services?

Methods

Setting and design

The UPP was conducted at the Department of Personality Psychiatry (DPP) at Oslo University Hospital. The State Health Insurance Fund covered the expenses for both treatment conditions. Patients were evaluated before treatment, and after 8 months, 18 months, 3 years, and 6 years. All patients received optional psychopharmacological consultations with a psychiatrist as part of the follow-up evaluations. The staff at the DPP conducted the initial clinical and diagnostic evaluation, while PhD students and research assistants performed the follow-up interviews and diagnostic evaluations. Written informed consent was obtained from participants after they were provided with a description of the study. The Data Inspectorate and Regional Ethics Committee in Norway approved the project.

Participants

Two hundred and fifty patients were referred to the DPP at Oslo University Hospital Ullevål during the intake period. Only patients with a diagnosis of PD were included. Exclusion criteria were schizotypal PD, antisocial PD, ongoing alcohol or drug dependence, psychotic disorders, bipolar I disorder, untreated attention deficit hyperactivity disorder (adult type), pervasive developmental disorder (e.g., Asperger's syndrome), organic syndromes, and being homeless. One hundred and thirty-three patients were excluded because they had conditions listed in the exclusion criteria, did not have any PD, or did not attend the baseline evaluation. The patients' pre-treatment demographics and clinical characteristics are reported in Table 1. After random assignment, there were no statistically significant differences in socio-demographic or clinical variables between the two groups, including the number of patients with axis I or axis II disorders and the mean number of axis II criteria.

Completeness of data

Figure 1 depicts the flow of patients throughout the study. After the initial evaluation, 117 patients were randomly allocated to one of the two treatment arms. Four patients withdrew from the study at different points after randomization. The present study included 113 patients: 59 in the step-down treatment arm and 54 in the outpatient treatment arm. Seventy-nine participants (70% of all participants) attended the 6-year follow-up investigation. These participants constituted 71% of the original participants in the step-down group and 67% of the original participants in the outpatient group (Figure 1). At the 6-year follow-up, there was no statistically significant difference in attendance rates between the two treatment groups. Moreover, there were no statistically significant differences in baseline variables between those who did and did not attend the 6-year follow-up analysis; however, there was a non-significant trend among those not attending towards having a higher score on the baseline Beck Depression Inventory (BDI) ($p = 0.057$). Fifty percent of the participants completed all five evaluations, while 4% attended only the baseline evaluation.

Treatments

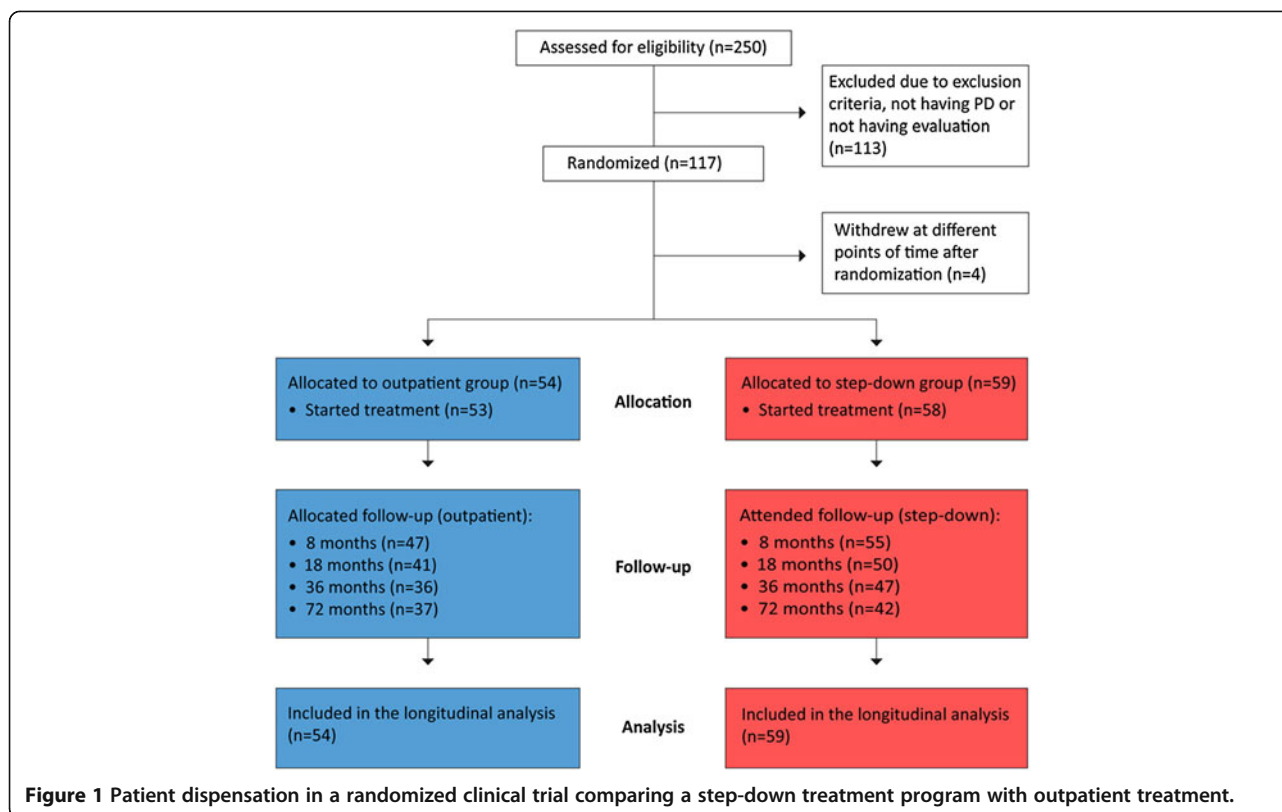
Step-down day hospital treatment (Step-down treatment)

The step-down day hospital treatment program consisted of an initial 18-week day hospital treatment phase, with a combination of psychodynamic and cognitive-behavioral group therapies for 3 to 4 days each week. The written treatment guidelines adhered to relational psychotherapy, with references to group analysis, self-psychology, and mentalization. After the initial day hospital treatment, the

Table 1 Baseline patient characteristics (n = 113)

	Total (n = 113)	Step-down (n = 59)	Outpatient (n = 54)
Mean age (SD)	31 (7.3)	31 (7.2)	31 (7.4)
Women	75%	78%	72%
<i>Education and work status</i>			
More than 12 years of education	51%	47%	57%
Full-time employee (100%)	23%	23%	24%
Half-time employee (approx. 50%)	8%	12%	4%
Student	16%	16%	16%
Unemployed	50%	49%	50%
Other	3%	0%	6%
<i>Symptom severity</i>			
Mean symptom distress, GSI (SD)	1.72 (0.66)	1.71 (0.69)	1.75 (0.62)
Mean interpersonal problems, CIP (SD)	1.69 (0.51)	1.70 (0.53)	1.72 (0.48)
Mean psychosocial functioning, GAF (SD)	47.6 (4.4)	47.3 (4.3)	47.9 (4.6)
<i>Self-injury / suicide attempts</i>			
Suicidal thoughts in the last 7 days	50%	50%	50%
Suicidal thoughts in the last 12 months	85%	88%	82%
Self-injury in the last 12 months	31%	36%	26%
<i>Axis II diagnosis</i>			
Mean number PD diagnosis	1.4 (0.6)	1.5 (0.7)	1.4 (0.6)
Mean number PD criteria	15 (5.7)	15 (6.2)	15 (5.2)
Schizotype	0%	0%	0%
Schizoid	1%	2%	0%
Paranoid	14%	17%	11%
Histrionic	0%	0%	0%
Narcissistic	2%	0%	4%
Antisocial	0%	0%	0%
Borderline	46%	46%	46%
Avoidant	41%	44%	37%
Dependent	7%	7%	7%
Obsessive-compulsive	9%	12%	6%
PD NOS	21%	19%	24%
<i>Axis I diagnosis</i>			
Mean number axis I diagnosis (SD)	3.4 (1.4)	3.7 (1.3)	3.5 (1.5)
Mood disorders	87%	85%	89%
Anxiety disorders	87%	90%	83%
Substance abuse disorder	25%	19%	32%

patients continued with outpatient combined psychotherapy. The outpatient treatment consisted of weekly group therapy (1.5 hours) for a maximum of 4 years, combined with weekly individual therapy for a maximum of 2.5 years. Fourteen percent of the patients dropped out of the step-down treatment before starting the combined outpatient psychotherapy. The average duration of treatments in the



step-down group was 31 months (SD = 16), and the average number of outpatient consultations (counting both group and individual therapy) was 106 (SD = 76.0). The mean interval between the end of study therapy and the 6-year follow-up analysis (post-treatment phase) was 43 months (SD = 18).

Outpatient individual psychotherapy (Outpatient treatment)

The outpatient treatment consisted of different individual psychotherapies conducted mainly by therapists in private practice. The therapists were instructed to treat the patients according to their own preferred method and practice. The researchers gave no instructions to the therapists regarding the duration or intensity of psychotherapy, nor did they interfere with any treatment decisions. The average duration of treatment in the outpatient group was 24 months (SD = 20), and the average number of consultations was 56 (SD = 56.7). The mean interval between the end of study therapy and the 6-year follow-up analysis (post-treatment phase) was 47 months (SD = 20) in the outpatient treatment.

Therapists

To recruit individual therapists to the study, letters were sent to all therapists in Oslo with a contract with the State Health Insurance Fund, as well as professionals working in public mental health outpatient clinics. The

therapists were assigned to one of the two treatment arms according to their own preferences, and signed a formal treatment contract with the project.

Group therapists in the step-down treatment

The 10 group therapists in the day hospital treatment were regular staff from the DPP (three psychiatric nurses, two psychiatrists, one residential doctor specializing in psychiatry, one specialist in clinical psychology, one art therapist, one social worker, and one physiotherapist). Seven of the 10 therapists had 5-years of training in group analysis. The mean age of the therapists was 48 years (SD = 9) and 80% were female. These therapists also conducted the outpatient group therapy.

Individual therapists in the step-down treatment

The individual therapists (n = 30) involved in the follow-up outpatient treatment included 16 psychologists, 12 psychiatrists, and two psychiatric nurses. Seven were recruited from the regular staff at the DPP. The therapists treated between one and three patients each. The mean age of the individual therapists was 50 years (SD = 9) and 57% were female. Their mean work experience as psychotherapists was 16 years (SD = 8). They were generally very satisfied with their work as therapists; when asked to rate their satisfaction on a scale ranging from 0 (no satisfaction) to 5 (very satisfied), the mean answer was 4.2 (SD = 0.6).

Therapists in the outpatient treatment

Thirty-two external therapists were recruited to provide outpatient treatment (16 psychologists, 15 psychiatrists, and one resident). Each therapist treated one to three patients. The mean age of these therapists was 55 years ($SD = 8$) and 41% were female. The mean work experience as psychotherapists was 20 years ($SD = 8$). The majority of these therapists practiced psychodynamic theoretical oriented therapy. At the same time, they reported being influenced by therapeutic theory and principles from other therapy models. They reported a mean of 4.0 ($SD = 0.6$) on the satisfaction scale. The individual therapists in the outpatient treatment arm were somewhat more experienced than the individual therapists in the step-down treatment arm ($p < 0.05$). The percentage of men was somewhat higher among the therapists in the outpatient group than among the individual therapists in the step-down group; however, this difference did not reach statistical significance.

Outcome measures

Psychosocial functioning

Psychosocial functioning was rated using the Global Assessment of Functioning Scale (GAF) and the Work and Social Adjustment Scale (WSAS) [29]. The GAF is rated on a scale from 1 to 100, with a higher score indicating a higher level of functioning. The GAF scores were observer-rated according to a split symptom and function version [30]. Only the lowest GAF scores of symptoms and functions were used in the analyses. The staff at the DPP rated the GAF scores at baseline; while, research fellows conducted the GAF interviews at the 8-month, 18-month, 3-year, and 6-year evaluations. All raters were blinded concerning treatment conditions. The reliability of the GAF scores (intra-class correlation coefficient, ICC 2.1) was 0.56 at baseline, 0.81 at 8 months, 0.85 at 18 months, 0.94 at 3 years, and 0.92 at 6 years. The WSAS is a self-reported 5-item scale of functional impairment. It measures level of impairment on a scale from 0 to 8, where 0 indicates no impairment at all and 8 indicates very severe impairment. The scores on the five different items are totaled in a sum score (range: 0–40). Subjective Quality of Life (QoL) was assessed using a 10-point scale, with a score of 1 representing the lowest perceived QoL and a score of 10 indicating the highest perceived QoL.

Interpersonal problems

Self-reported interpersonal problems were assessed by the Circumplex of Interpersonal Problems (CIP) [31], a 48-item Norwegian version of the Inventory of Interpersonal Problems-Circumplex version (IIP-C) [32] with a 5-point Likert response format ranging from 0 to 4. A higher score indicates more interpersonal problems.

The sum scores of the two versions correlate at a level of 0.99.

Symptom distress

Self-reported symptom distress was measured by the Symptom Checklist, SCL-90-R [33]. The SCL-90-R was designed to cover the major symptoms of psychiatric distress, summarized in a Global Severity Index (GSI) with scores ranging from 0 to 4, with higher scores indicating more symptom distress. Characteristic attitudes and symptoms of depression were assessed using the BDI [34]. Sum scores between 19 and 29 indicate moderate depression, while scores ≥ 30 indicate severe depression.

Axis I and II diagnoses

Axis I and II diagnoses were based on the Mini International Neuropsychiatric Interview (MINI) [35] and the Structured Clinical Interview for DSM-IV (SCID-II) [36], respectively. At the 6-year follow-up, 30 videotapes were evaluated by two independent raters. The reliability coefficients were (ICC 2.1) were 0.76, 0.87, and 0.92 for the number of axis I diagnoses, number of axis II diagnoses, and total number of SCID-II criteria, respectively. The diagnostic reliability at baseline and at the 3-year follow-up were also acceptable and were reported previously [28].

Self-harm, suicidal thoughts and suicide attempts

Incidents of self-harm and suicide attempts were self-reported by patients and then confirmed during the research interviews. At baseline and at the 6-year follow-up, the patients were asked to report self-harm and suicide attempts during the last 12 months. When assessed at the 8-month, 18-month, and 3-year follow-ups, patients were asked to report incidents since the last follow-up, as well as suicidal thoughts during the last seven days.

Statistical analysis

All results were analyzed using an intention-to-treat approach based on treatment assignments. Longitudinal analysis was used to assess change over time and relate the changes to covariates, particularly treatment group assignment. We used a linear mixed model (LMM) for the continuous outcomes, with maximum likelihood as the method of estimation. Piecewise linear splines, with one knot at 3-years for all outcomes, were used to describe the main features in the observed outcomes. Separate random intercepts and slopes were included when proven to enhance the model fit. The parameters of main interest were the fixed effect interaction terms between groups and times, prior to and following the knot, describing whether the patients in the two groups changed differently across the observation period. Assumptions about withdrawal from follow-up evaluations

(missing at random, MAR) and selection bias follow descriptions in previous reports [28]. Although it is not possible to test the MAR assumption, a comparison with a complete case analysis (participants without dropouts) is informative and was conducted in this study. When interpreting the significance levels, it is important to keep in mind that no correction for multiple testing was conducted in this trial. Residual analyses and a search for outliers were performed to assess model adequacy. The treatment effects at the 6-year follow-up on axis I and II diagnoses were compared using an independent *t*-test (two-tailed) and chi-squared statistics. For the analysis of vocational functioning and the estimates of health care use, the normal distribution range was not fulfilled and non-parametric tests were used. Within-group pre-post effect sizes were computed using Cohen's *d*, with pooled pre- and post-SD adjustment for sample size. All analyses were performed using SPSS (version 18; SPSS Inc.).

Results

Overall clinical course from baseline to the 6-year follow-up

According to the LMM analyses, there were no statistically significant differences between treatment groups at the 6-year follow-up for the primary outcome variables. The *p*-value of the different outcomes between treatment conditions were: GAF (*p* = 0.52), WSAS (*p* = 0.47), CIP (*p* = 0.96), GSI (*p* = 0.38), BDI (*p* = 0.47), and QoL (*p* = 0.27). Both groups improved on all outcome variables between baseline and 6 years. The means and SDs for the main outcome measures, as well as the within-group effect sizes are shown in Table 2. The mean effect size (*d*) was 1.07 (range: 0.56-1.92) in the step-down group from baseline to 6 years and 0.87 (range: 0.66-1.10) in the outpatient group.

Clinical course from the 3- to 6-year follow-up

The LMM analyses revealed statistically significant differences in the course of psychosocial functioning (Figure 2 and Table 3). Patients in the outpatient treatment arm experienced a significantly greater increase in psychosocial functioning between 18 months and 3 years [28]. However, during the period from 3–6 years, the level of functioning was reversed in the outpatient group. In contrast, there was stable growth in the level of functioning in the step-down group. This between-group difference was statistically significant for both GAF (*p* < 0.001) and WSAS (*p* = 0.001), favoring the step-down treatment. For the other outcome measures, the interaction between treatment group and time (3–6 years) was not statistically significant, although the difference in the course of the CIP trended towards significance (*p* = 0.055) in favor of the step-down program.

Secondary outcome variables at the 6-year follow-up

There were no statistically significant differences between the two treatment groups at the end of the follow-up period with respect to the numbers of patients with axis I or axis II disorders. The step-down group had a mean number of 1.7 (SD = 1.5) axis I diagnoses, versus 2.3 (SD = 2) in the outpatient group. Thirty percent of the participants at the 6-year follow-up had been diagnosed with at least one PD. The mean number of PDs was 0.45 (SD = 0.75) in the step-down group and 0.31 (SD = 0.59) in the outpatient group. The mean number of PD criteria met was 5.8 (SD = 6.5) in the step-down group and 5.6 (SD = 5.6) in the outpatient group.

At the 6-year follow-up, 10% of patients in the step-down group and 12.5% of patients in the outpatient group reported self-harming behavior in the last 12 months. Twenty-one percent of patients in both treatment arms reported suicidal thoughts in the past 7 days. Forty percent of patients in the step-down group and 41% of patients in the outpatient group reported suicidal thoughts in the past 12 months. One patient in the step-down group reported a suicide attempt during the past 12 months, while no suicide attempts were reported in the outpatient group. One patient in the step-down group committed suicide 9 months after withdrawing from the day hospital treatment. According to the Norwegian national registration office, two more patients (from the outpatient treatment arm) had died. The causes of these patients' deaths are unknown.

At the 6-year evaluation, 61% of participants had worked or studied at some point during the past year: 67% in the step-down group and 54% in the outpatient group. The median number of months spent working or studying was 7 (range: 0–12) in the step-down group and 2 (range: 0–12) in the outpatient group. This difference was not statistically significant. However, 63% of patients in the step-down group and 34% of patients in the outpatient group had a GAF score >60 (*p* = 0.018). The use of health care services, like contact with a general practitioner and current outpatient treatment, did not differ significantly between groups (Table 4). The complete case analyses showed a similar pattern as the intention to treat analyses. According to the complete case analyses, there was a statistically significant difference in the course of psychosocial functioning, as assessed by GAF and WSAS, favoring the step-down treatment in the 3 to 6 year period.

Discussion

Summary of findings

First, there were no statistically significant differences between the treatment groups regarding the primary outcome variables from baseline to the 6-year follow-up. Both groups exhibited clinical improvement during the

Table 2 Mean outcome measures (with SD) and effect sizes * (Cohens' *d*) of the step-down and outpatient treatments at baseline and at 8, 18, 3, and 6- years of follow-up

	Step-down										
	Baseline		8 months		18 months		3- years		6- years		<i>d</i>
GAF	47.3	(4.3)	51.5	(10.2)	53.5	(10.3)	57.7	(12.7)	62.7	(13.6)	
WSAS	25.3	(7.2)	20.6	(8.6)	19	(9)	19.2	(10.6)	13.7	(11.0)	1.19
GSI	1.71	(0.69)	1.43	(0.65)	1.32	(0.75)	1.19	(0.75)	0.91	(0.72)	1.14
BDI	18.3	(8.2)	17.2	(7.6)	15.5	(10.7)	14.7	(11.3)	13.0	(11.2)	0.56
CIP	1.66	(0.53)	1.53	(0.59)	1.51	(0.6)	1.42	(0.62)	1.13	(0.68)	0.89
QOL	3.3	(1.6)	4.5	(1.6)	4.9	(2.1)	5.4	(2)	6.1	(2.3)	1.49
PDcrit	13.3	(5.6)					8.5	(6.4)	5.9	(6.5)	1.24

	Outpatient										
	Baseline		8 months		18 months		3- years		6- years		<i>d</i>
GAF	47.9	(4.6)	50.2	(12)	56.8	(11.7)	66.9	(12.6)	57.1	(14.5)	
WSAS	24.7	(8.2)	18.9	(9.9)	15.7	(11.2)	12.6	(10.9)	18.3	(11.3)	0.68
GSI	1.75	(0.62)	1.43	(0.73)	1.23	(0.73)	1.06	(0.79)	1.12	(0.74)	0.95
BDI	19.9	(9.5)	18.5	(11.8)	16.6	(12.5)	12.2	(10.3)	13.4	(9.95)	0.66
CIP	1.72	(0.48)	1.52	(0.57)	1.25	(0.62)	1.22	(0.64)	1.32	(0.62)	0.75
QOL	3.6	(1.7)	4.4	(1.9)	5.1	(2.3)	5.9	(2.2)	5.5	(1.85)	1.08
PDcrit	13.4	(4.8)					6.0	(5.8)	5.6	(5.6)	1.53

Note. *GSI*: Global Severity Index; *GAF*: Global Assessment of Functioning; *CIP*: Circumplex of Interpersonal Problems; *BDI*: Beck depression inventory; *WSAS*: Social and Adjustment Scale; *QoL*: Quality of Life. *Effect sizes (*d*) are pre-post estimates from baseline to 6- years of follow-up.

6-year period. The effect sizes were mainly in the large range for both treatment groups; although, there was a tendency towards larger effect sizes in the step-down treatment arm. Second, patients in the outpatient group had a marked decline in psychosocial functioning during the period between the 3- and 6-year follow-ups; while, psychosocial functioning continued to improve during the same period in the step-down group. This effect was statistically significant. Finally, 30% of patients still had a PD diagnosis at the 6-year follow-up, with no significant differences between the two treatment arms. There were also no statistically significant differences between groups concerning self-harm/suicidality, vocational functioning, and use of health care services.

Comparison with other studies

The findings in the present study differ from those of other step-down programs by Chiesa et al. [18] and Fonagy and Bateman [19], where superior outcomes were observed for the step-down treatment. Some possible explanations for these differences should be discussed. First, there is considerable variety among the programs with regard to their duration, intensity, and composition of their respective treatment elements. Chiesa et al. [18] investigated a model consisting of a 6-month inpatient stay followed by 12–18 months of outpatient combined group and individual treatment; while, the study by Fonagy and Bateman included 18 months of mentalization-based day hospital treatment followed by group therapy twice

weekly for a maximum of 18 months [37]. In the present study, the initial phase was restricted to 18 weeks of day hospital treatment. This was followed by the long-term outpatient therapy consisting of weekly combined group and individual psychotherapy. Second, there were notable differences in comparison groups. Chiesa et al. compared their step-down model to groups receiving long-term residential treatment or general psychiatric community treatment. Also, it should be mentioned that the allocation to different treatment conditions was not based on randomized. The comparison group in Fonagy and Bateman's study received treatment as usual in the local community. Thus, neither of these studies included outpatient individual therapy as a comparison group. It is difficult to make direct comparisons between the studies due to these differences in program characteristics and control groups. Also, the present study included a mixed PD sample, although schizotypal and antisocial PDs were excluded. It is not clear whether step-down models suit certain PD categories (e.g., borderline PD) more than others and this should be investigated further [16]. We also need to know more about how different levels of PD severity can affect treatment outcome, e.g. whether patients in the most severe end of the severity spectrum will profit from more or less intensive treatment or psychosocial support. For instance, Chiesa [38,39] found that more severe PD patients seemed to respond better to a less intensive community based treatment regime than an intensive long-term residential stay.

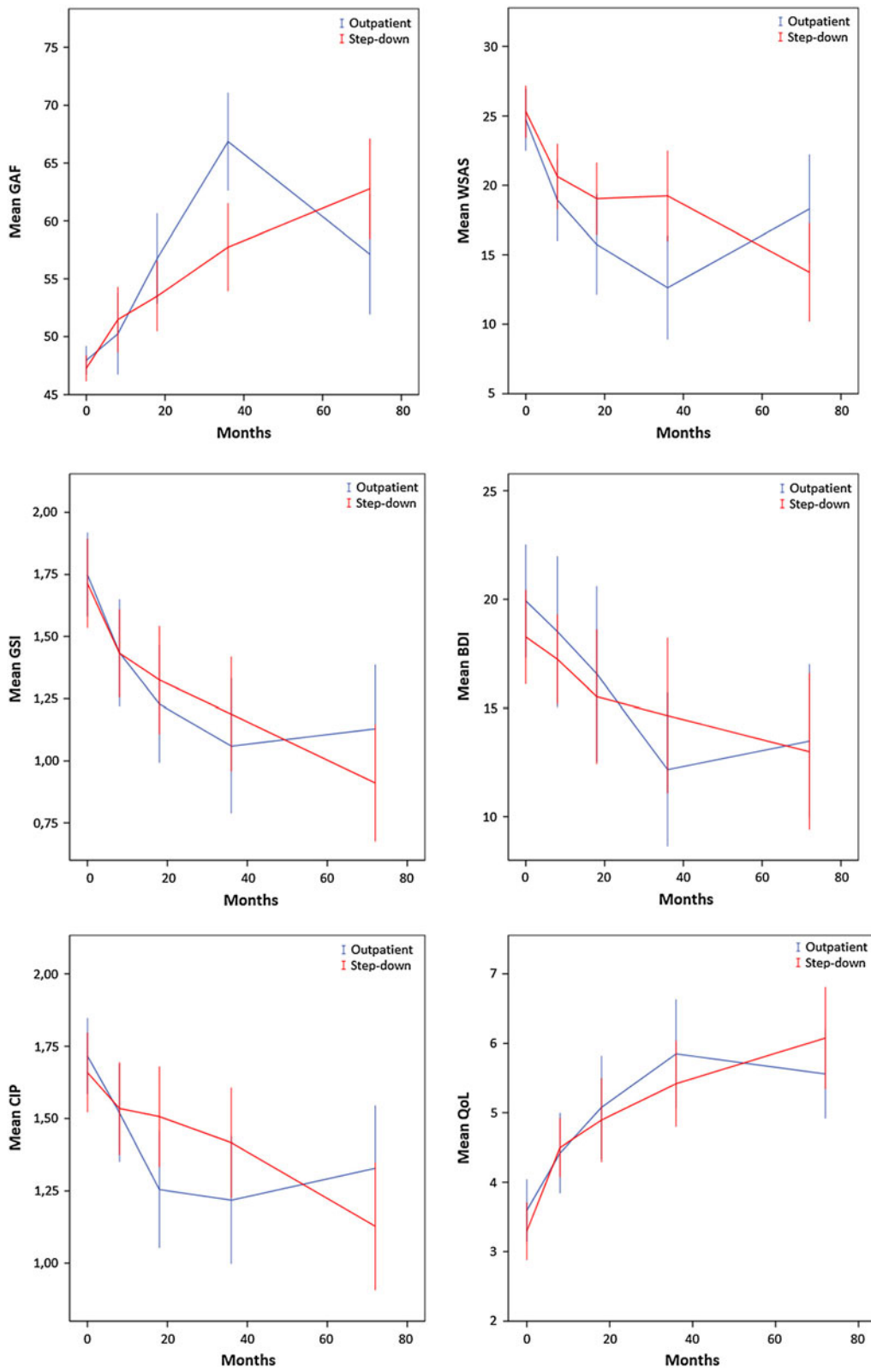


Figure 2 Course of primary outcome variables.

Table 3 Fixed effects estimates in the linear mixed model for psychosocial function from baseline to 3 years and from 3–6 years

Outcome	Fixed effects	Estimates ¹	SE	95% CI
GAF	<i>Main effect group</i>			
	Outpatient group	0.63	0.86	-1.07, 2.33
	Step-down group	0 (Ref)		
	<i>Main effect time</i>			
	Time ≤ 3- years	0.28***	0.05	0.18, 0.37
	Time > 3- years	0.14*	0.06	0.14, 0.26
	<i>Interaction, group x time ≤ 3- years</i>			
	Outpatient group	0.21**	0.73	0.06, 0.36
	Step-down group	0 (Ref)		
	<i>Interaction, group x time > 3- years</i>			
	Outpatient group	-0.38***	0.10	-0.67, -0.18
	Step-down group	0 (Ref)		
WSAS	<i>Main effect group</i>			
	Outpatient group	-1.50	1.53	-4.55, 1.55
	Step-down group	0 (Ref)		
	<i>Main effect time</i>			
	Time ≤ 3- years	-0.06	0.03	-0.12, 0.01
	Time > 3- years	-0.14*	0.04	-0.23, 0.05
	<i>Interaction, group x time ≤ 3- years</i>			
	Outpatient group	-0.10	0.05	-0.20, 0.004
	Step-down group	0 (Ref)		
	<i>Interaction, group x time > 3- years</i>			
	Outpatient group	0.25***	0.07	0.11, 0.38
	Step-down group	0 (Ref)		

Note. GAF: Global Assessment of Functioning; WSAS: Work and Social Adjustment Scale.

¹The time unit is one month. *p ≤ 0.05; **p ≤ 0.01; ***p ≤ 0.001.

The present finding of equal long-term outcomes should be considered in light of accumulating evidence of the benefits of outpatient individual therapy for patients with PDs, particularly borderline PD [20,40,41]. Also, such benefits are not limited to specialized manualized therapies. McMain [42] and Vinnars [43] compared non-manual based treatments with manual based therapies in community and outpatient settings and found their effects were similar. In the UPP, the patients in the outpatient treatment arm received non-manualized psychotherapy from therapists who were instructed to treat the patients in accordance with their usual practice.

Clinical considerations

The present findings suggest that both hospital-based long-term step-down treatment and outpatient individual

Table 4 Use of health services during the past 12 months, at 6- years of follow-up

	Total (n = 79)	Step-down (n = 42)	Outpatient (n = 37)
Patients with GP visits	92%	93%	92%
Patient visiting GP for mental health issues	57%	50%	65%
Median number of GP visits	4	4	5
Currently receiving psychiatric treatment*	48%	44%	53%
Outpatient treatment	29%	21%	38%
Contact with psychiatric emergency	3%	2%	3%
Contact with a psychiatric nurse	11%	10%	14%
Substance addiction clinic	5%	2.5%	3%
Regular psychiatric medication	43%	33%	54%

*Includes any form of psychiatric treatment (e.g., regular contact with a psychiatric nurse, psychiatric medication, regular psychotherapy, or day treatment at a psychiatric hospital).

psychotherapy with therapists with the opportunity to practice long-term treatment may help improve symptoms and psychosocial in poorly functioning PD patients. Interestingly, analyses of treatment costs from baseline to the 3-year follow-up showed no significant differences in total treatment costs between the treatment conditions when both costs related to study treatment and additional psychiatric treatments were included [44]. The present study did not include cost analyses; however, there were small differences in the use of health care services at the 6-year follow-up, which suggests the differences in the overall costs between the treatment programs are minor.

Taking into account the superior psychosocial outcome for the outpatient treatment condition at the 3- year follow-up, the divergence in the pattern of the clinical course between the treatment groups from the 3- to 6-year follow-ups was unexpected. The finding at the 6-year follow-up is strengthened by the observer-rated GAF values and self-rated WSAS scores, which both demonstrated the same statistically significant patterns between 18 months and 3 years and between 3 and 6 years. Moreover, the shift in the proportion of patients with GAF levels >60 further supports this pattern. A GAF score <60 is descriptive of moderate to severe psychosocial dysfunction, and a GAF score >60 indicates a range from mild dysfunction to a high level of functioning. At the 3-year evaluation, only one-third of patients in the step-down group and two-thirds of patients in the outpatient group had a GAF level >60 [28]. In contrast, at the 6-year follow-up, two-thirds of the step-down group and one-third of the outpatient group had a GAF level >60. This between-group difference was not only statistically significant, but also clinically significant.

Some plausible explanations concerning the divergence in clinical course between groups should be discussed. First, group therapy was an essential element in the step-down condition. Group therapy is a demanding format for patients with PDs that activates and challenges their interpersonal problems and emotional difficulties. The gains may be harder to reach and slower to appear when struggling with such core issues over time in therapy groups. However, if sufficiently integrated, the experiences might serve as a basis for further development after the end of treatment. Next, the step-down program implied a disruption of attachments to therapists and group members after a short intensive day treatment phase, and required that the patients form new emotional bonds with group members and therapists in outpatient treatment. The attachment difficulties typical of patients with severe PD make those patients vulnerable during transitions between therapies. This vulnerability may have affected their therapeutic process and caused a delay in clinical improvement [45]. In fact, this was the view of the clinical management, who decided to close the step-down program in 2008 because of the results of this study. The program was changed to an outpatient mentalization-based treatment program without any day hospital component. Conversely, the outpatient group might have benefitted from the possibility of a stable and continuing attachment relation to one therapist during the entire treatment period, and thereby achieved faster improvement in psychosocial adaptation. Yet, the advantage observed at the 3-year follow-up was not sustained after 6 years. At the 6-year follow-up, most patients had been in the post-treatment phase for a long time. One may speculate whether the less intensive outpatient individual therapy had a more supportive function in relation to psychosocial problems, which facilitated social adjustment in the short run for certain patients but was easier lost in the post-treatment phase. Finally, treatment received after secession of UPP treatment could potentially explain the differences in clinical course between treatment arms. However, there were no significant differences in health care services received in the past year between groups at the 6-year follow-up.

Strengths and limitations

The strengths of the present study are the randomized design and the extended follow-up of long-term therapies for patients with PDs. At present, both step-down models and outpatient therapies are realistic treatment options for the majority of dysfunctional PD patients, and comparisons between treatments at such different levels of care are needed. The day hospital part of the step-down program was quite representative for short-term day hospitals in Norway [11]. Moreover, the two treatments were conducted in ordinary clinical settings and only a few

severe cases with complicated comorbidities were excluded, which strengthens the external validity of the study. High dropout rates and unstable attendance are common in the treatment of patients with PDs, and high attrition from follow-up evaluations may be a challenge in longitudinal studies of this patient group. The response rate at the 6-year follow-up was approximately 70%, which is considered satisfactory. Certain limitations of the present study should be noted, however. First, as outlined above, missing data and violation of the MAR assumption could bias the results. However, complete case analyses support the validity of the present findings. In addition, in the present study we did not control for other kinds of treatments that patients may have received during the 6-year follow-up period. Data from the 3-year follow-up showed that treatment outside the UPP was common for certain patients [44]. Finally, the study did not take into account or model the possible influence of life events or other extra-therapeutic circumstances.

Conclusion

The findings indicate that both hospital-based long-term step-down treatment and outpatient individual psychotherapy with therapists who are able to provide long-term treatment may help improve symptoms and psychosocial functioning in poorly functioning PD patients, although patients with schizotypal and antisocial PD were not included in this study. The step-down group continued to improve in social and interpersonal functioning in the post-treatment phase, suggesting that longer-term changes were stimulated during treatment. In concordance with most treatment studies of patients with PDs, there was considerable variation in outcome among the patients across treatments. We need to further improve our understanding of various patient and treatment characteristics that might influence the long-term course of these patients, and whether some treatments work better for certain patients.

Competing interests

The authors declare that they have no competing interests.

Authors' contributions

TW, SK, ØU, and GP were responsible for designing the UPP-study and selecting study instruments. MSJ, BH, and AK contributed to the acquisition of data. BTA and TW analyzed the data, with statistical contributions by OK. The manuscript was drafted by BTA and TW. EHK and BH contributed to the interpretation of results. All authors reviewed, revised, and approved the final version of the manuscript.

Acknowledgments

This research was funded by the South-Eastern Norway Regional Health Authority, Oslo University Hospital, Ullevål, and "Extra Stiftelsen, Helse og Rehabilitering". The funding sources had no further role in the study design; collection, analysis, and interpretations of data; the writing of the report; or the decision to submit the paper for publications.

Author details

¹Institute for Clinical Medicine, University of Oslo, Oslo, Norway. ²Department of Research and Development, Clinic for Mental Health and Addiction, Oslo University Hospital, Oslo, Norway. ³Department of Psychiatry, Lovisenberg Diaconal hospital, Oslo, Norway. ⁴Department of Personality Psychiatry, Clinic for Mental Health and Addiction, Oslo University Hospital, Oslo, Norway.

Received: 20 August 2013 Accepted: 10 April 2014

Published: 23 April 2014

References

- Ogrodniczuk JS: New directions in treatment research for personality disorders: effectiveness of different levels of care. *Psychother Psychosom* 2011, **80**(2):65–69.
- Verheul R, Herbrink M: The efficacy of various modalities of psychotherapy for personality disorders: a systematic review of the evidence and clinical recommendations. *Int Rev Psychiatry* 2007, **19**:25–38.
- Livesley J: Integrated therapy for complex cases of personality disorder. *J Clin Psychol* 2008, **64**:207–221.
- Gunderson JG, Gratz KL, Neuhaus EC, Smith GW: Levels of Care in Treatment. In *Textbook of Personality Disorders*. 1st edition. Edited by Oldham JM, Skodol AE, Bender DS. Washington DC, USA: American Psychiatric Publishing, Inc; 2005:239–255.
- Stoffers JM, Vollm BA, Rucker G, Timmer A, Huband N, Lieb K: Psychological therapies for people with borderline personality disorder. *Cochrane Database Syst Rev* 2012, **8**, CD005652.
- Ogrodniczuk JS, Piper WE: Day treatment for personality disorders: a review of research findings. *Harv Rev Psychiatry* 2001, **9**:105–117.
- Bartak A, Andrea H, Spreeuwenberg MD, Thunnissen M, Ziegler UM, Dekker J, Bouvy F, Hamers EF, Meerman AM, Busschbach JJ, Verheul R, Stijnen T, Emmelkamp PM: Patients with cluster A personality disorders in psychotherapy: an effectiveness study. *Psychother Psychosom* 2011, **80**:88–99.
- Bartak A, Andrea H, Spreeuwenberg MD, Ziegler UM, Dekker J, Rossum BV, Hamers EF, Scholte W, Aerts J, Busschbach JJ, Verheul R, Stijnen T, Emmelkamp PM: Effectiveness of outpatient, day hospital, and inpatient psychotherapeutic treatment for patients with cluster B personality disorders. *Psychother Psychosom* 2011, **80**:28–38.
- Bartak A, Spreeuwenberg MD, Andrea H, Holleman L, Rijnierse P, Rossum BV, Hamers EF, Meerman AM, Aerts J, Busschbach JJ, Verheul R, Stijnen T, Emmelkamp PM: Effectiveness of different modalities of psychotherapeutic treatment for patients with cluster C personality disorders: results of a large prospective multicentre study. *Psychother Psychosom* 2010, **79**:20–30.
- Chiesa M, Bateman A, Wilberg T, Friis S: Patients' characteristics, outcome and cost-benefit of hospital-based treatment for patients with personality disorder: a comparison of three different programmes. *Psychol Psychother* 2002, **75**(Pt 4):381–392.
- Karterud S, Wilberg T: From general day hospital treatment to specialized treatment programmes. *Int Rev Psychiatry* 2007, **19**:39–49.
- Livesley WJ: Research trends and directions in the study of personality disorder. *Psychiatr Clin North Am* 2008, **31**:545–559. ix.
- Bateman A, Fonagy P: Effectiveness of partial hospitalization in the treatment of borderline personality disorder: a randomized controlled trial. *Am J Psychiatry* 1999, **156**:1563–1569.
- Bateman A, Fonagy P: Treatment of borderline personality disorder with psychoanalytically oriented partial hospitalization: an 18-month follow-up. *Am J Psychiatry* 2001, **158**:36–42.
- Bateman A, Fonagy P: 8-year follow-up of patients treated for borderline personality disorder: mentalization-based treatment versus treatment as usual. *Am J Psychiatry* 2008, **165**:631–638.
- Chiesa M, Fonagy P: Prediction of medium-term outcome in cluster B personality disorder following residential and outpatient psychosocial treatment. *Psychother Psychosom* 2007, **76**:347–353.
- Chiesa M, Fonagy P, Holmes J: Six-year follow-up of three treatment programs to personality disorder. *J Pers Disord* 2006, **20**:493–509.
- Chiesa M, Fonagy P, Holmes J, Drahorad C: Residential versus community treatment of personality disorders: a comparative study of three treatment programs. *Am J Psychiatry* 2004, **161**:1463–1470.
- Bateman A, Fonagy P: Randomized controlled trial of outpatient mentalization-based treatment versus structured clinical management for borderline personality disorder. *Am J Psychiatry* 2009, **166**:1355–1364.
- Giesen-Bloo J, van Dyck R, Spinhoven P, van Tilburg W, Dirksen C, van Asselt T, Kremers I, Nadort M, Arntz A: Outpatient psychotherapy for borderline personality disorder: randomized trial of schema-focused therapy vs transference-focused psychotherapy. *Arch Gen Psychiatry* 2006, **63**:649–658.
- Davidson KM, Tyrer P, Norrie J, Palmer SJ, Tyrer H: Cognitive therapy v. usual treatment for borderline personality disorder: prospective 6-year follow-up. *Br J Psychiatry* 2010, **197**:456–462.
- Kvarstein EH, Karterud S: Large variations of global functioning over five years in treated patients with personality traits and disorders. *J Pers Disord* 2012, **26**:141–161.
- Skodol AE, Gunderson JG, Shea MT, McGlashan TH, Morey LC, Sanislow CA, Bender DS, Grilo CM, Zanarini MC, Yen S, Pagano ME, Stout RL: The Collaborative Longitudinal Personality Disorders Study (CLPS): overview and implications. *J Pers Disord* 2005, **19**:487–504.
- Zanarini MC, Frankenburg FR, Hennen J, Reich DB, Silk KR: The McLean Study of Adult Development (MSAD): overview and implications of the first six years of prospective follow-up. *J Pers Disord* 2005, **19**:505–523.
- Zanarini MC, Frankenburg FR, Reich DB, Fitzmaurice G: The 10-year course of psychosocial functioning among patients with borderline personality disorder and axis II comparison subjects. *Acta Psychiatr Scand* 2010, **122**:103–109.
- Arnevik E, Wilberg T, Urnes O, Johansen M, Mosen JT, Karterud S: Psychotherapy for personality disorders: short-term day hospital psychotherapy versus outpatient individual therapy - a randomized controlled study. *Eur Psychiatry* 2009, **24**:71–78.
- Arnevik E, Wilberg T, Urnes O, Johansen M, Mosen JT, Karterud S: Psychotherapy for personality disorders: 18 months' follow-up of the ullevål personality project. *J Pers Disord* 2010, **24**:188–203.
- Gullestad FS, Wilberg T, Klungsoyr O, Johansen MS, Urnes O, Karterud S: Is treatment in a day hospital step-down program superior to outpatient individual psychotherapy for patients with personality disorders? 3-years follow-up of a randomized clinical trial comparing different treatment modalities. *Psychother Res* 2012, **22**:426–441.
- Mundt JC, Marks IM, Shear MK, Greist JM, Marks IM, Shear MK, Greist JM: The work and social adjustment scale: a simple measure of impairment in functioning. *Br J Psychiatry* 2002, **180**:461–464.
- Pedersen G, Hagtvet KA, Karterud S: Generalizability studies of the global assessment of functioning-split version. *Compr Psychiatry* 2007, **48**:88–94.
- Perdersen G: Norwegian revised version of inventory of interpersonal problems - circumplex (IIP-C). *Tidsskr Nor Laegeforen* 2002, **39**:25–34.
- Alden LE, Wiggins JS, Pincus AL: Construction of circumplex scales for the inventory of interpersonal problems. *J Pers Assess* 1990, **55**:521–536.
- Derogatis LR: Misuse of the symptom checklist 90. *Arch Gen Psychiatry* 1983, **40**:1152–1153.
- Groth-Marnat G: *The handbook of psychological assessment*. 2nd edition. New York: John Wiley & Sons; 1990.
- Sheehan DV, Lecrubier Y, Sheehan KH, Amorim P, Janavs J, Weiller E, Hergueta T, Baker R, Dunbar GC: The Mini-International Neuropsychiatric Interview (M.I.N.I.): the development and validation of a structured diagnostic psychiatric interview for DSM-IV and ICD-10. *J Clin Psychiatry* 1998, **59**(Suppl 20):22–33. quiz 34–57.
- First MB, Gibbon M, Spitzer RL, Williams JBW, Benjamin LS: *The Structural Clinical Interview for DSM-IV Axis I Personality Disorder (SCID-II)*. Washington DC, USA: American Psychiatric Press; 1997.
- Bateman A, Fonagy P: Mentalization based treatment for borderline personality disorder. *World Psychiatry* 2010, **9**:11–15.
- Chiesa M, Fonagy P, Gordon J: Community-based psychodynamic treatment of severe personality disorder: clinical description and naturalistic evaluation. *J Psychiatr Pract* 2009, **15**:12–24.
- Chiesa M, Hanton R, Fonagy P: Clinical Associations of deliberate self-injury and its impact on the outcome of community-based and long term inpatient treatment for personality disorder. *Psychother Psychosom* 2011, **80**:100–109.
- Clarkin JF, Levy KN, Lenzenweger MF, Kernberg OF: Evaluating three treatments for borderline personality disorder: a multiwave study. *Am J Psychiatry* 2007, **164**:922–928.

41. Linehan MM, Comtois KA, Murray AM, Brown MZ, Gallop RJ, Heard HL, Korslund KE, Tutek DA, Reynolds SK, Lindenboim N: **Two-year randomized controlled trial and follow-up of dialectical behavior therapy vs therapy by experts for suicidal behaviors and borderline personality disorder.** *Arch Gen Psychiatry* 2006, **63**:757–766.
42. McMair SF, Links PS, Gnam WH, Guimond T, Cardish RJ, Korman L, Streiner DL: **A randomized trial of dialectical behavior therapy versus general psychiatric management for borderline personality disorder.** *Am J Psychiatry* 2009, **166**:1365–1374.
43. Vinnars B, Barber JP, Noren K, Gallop R, Weinryb RM: **Manualized supportive-expressive psychotherapy versus nonmanualized community-delivered psychodynamic therapy for patients with personality disorders: bridging efficacy and effectiveness.** *Am J Psychiatry* 2005, **162**:1933–1940.
44. Kvarstein EH, Arnevik E, Halsteinli V, Rø FG, Karterud S, Wilberg T: **Health service costs and clinical gains of psychotherapy for personality disorders: a randomized controlled trial of day-hospital-based step-down treatment versus outpatient treatment at a specialist practice.** *BMC Psychiatry* 2013, **13**:315.
45. Hummelen B, Wilberg T, Karterud S: **Interviews of female patients with borderline personality disorder who dropped out of group psychotherapy.** *Int J Group Psychother* 2007, **57**:67–91.

doi:10.1186/1471-244X-14-119

Cite this article as: Antonsen *et al.*: Step-down versus outpatient psychotherapeutic treatment for personality disorders: 6-year follow-up of the Ullevål personality project. *BMC Psychiatry* 2014 **14**:119.

Submit your next manuscript to BioMed Central and take full advantage of:

- Convenient online submission
- Thorough peer review
- No space constraints or color figure charges
- Immediate publication on acceptance
- Inclusion in PubMed, CAS, Scopus and Google Scholar
- Research which is freely available for redistribution

Submit your manuscript at
www.biomedcentral.com/submit

