

Cyclic AMP can promote APL progression and protect myeloid leukemia cells against anthracycline-induced apoptosis

G Gausdal¹, A Wergeland¹, J Skavland², E Nguyen^{3,4}, F Pendino^{3,4}, N Rouhee¹, E McCormack², L Herfindal^{1,5}, R Kleppe¹, U Havemann⁶, F Schwede⁶, Ø Bruserud^{2,7}, BT Gjertsen^{2,7}, M Lanotte^{3,4}, E Ségal-Bendirdjian^{3,4} and SO Døskeland^{*,1}

We show that cyclic AMP (cAMP) elevating agents protect blasts from patients with acute promyelocytic leukemia (APL) against death induced by first-line anti-leukemic anthracyclines like daunorubicin (DNR). The cAMP effect was reproduced in NB4 APL cells, and shown to depend on activation of the generally cytoplasmic cAMP-kinase type I (PKA-I) rather than the perinuclear PKA-II. The protection of both NB4 cells and APL blasts was associated with (inactivating) phosphorylation of PKA site Ser118 of pro-apoptotic Bad and (activating) phosphorylation of PKA site Ser133 of the AML oncogene CREB. Either event would be expected to protect broadly against cell death, and we found cAMP elevation to protect also against 2-deoxyglucose, rotenone, proteasome inhibitor and a BH3-only mimetic. The *in vitro* findings were mirrored by the findings in NSG mice with orthotopic NB4 cell leukemia. The mice showed more rapid disease progression when given cAMP-increasing agents (prostaglandin E₂ analog and theophylline), both with and without DNR chemotherapy. The all-*trans* retinoic acid (ATRA)-induced terminal APL cell differentiation is a cornerstone in current APL treatment and is enhanced by cAMP. We show also that ATRA-resistant APL cells, believed to be responsible for treatment failure with current ATRA-based treatment protocols, were protected by cAMP against death. This suggests that the beneficial pro-differentiating and non-beneficial pro-survival APL cell effects of cAMP should be weighed against each other. The results suggest also general awareness toward drugs that can affect bone marrow cAMP levels in leukemia patients.

Cell Death and Disease (2013) 4, e516; doi:10.1038/cddis.2013.39; published online 28 February 2013

Subject Category: Cancer

Cyclic AMP (cAMP) is the second messenger for extracellular signals, such as endogenous and exogenous β -adrenergic stimulators and members of the prostaglandin family, often increased under conditions of inflammation. The cellular cAMP concentration can also be increased by phosphodiesterase (PDE)-inhibiting drugs. The major cAMP mediators are the cAMP-dependent protein kinase isozyme I and II (PKA-I, PKA-II), and the cAMP-stimulated GDP exchange factor Epac.^{1,2}

A striking effect of cAMP³ and the cAMP synthesis-stimulating prostaglandin E₂ (PGE₂)⁴ is enhanced all-*trans* retinoic acid (ATRA)-induced maturation of acute promyelocytic leukemia (APL)-derived NB4 cells.⁵ ATRA-induced maturation is a cornerstone in APL therapy, and its combination with cAMP signaling stimulators has been advocated to improve current APL therapy. Thus, stimulation of cAMP signaling by PDE inhibitor enhanced the effect of ATRA on survival of syngenic PML-RARA APL mice and mice transplanted with NB4 cells,^{6–8} and retarded the APL progression in a patient.⁷ Although cAMP stimulation protects

mature neutrophils^{9–11} and promonocytic leukemia cells¹² against death and induces death of the BNML-derived AML line IPC,¹³ little is known about the impact of cAMP on APL cell survival. This is of particular concern as ATRA is used together with an anthracycline (daunorubicin; DNR or idarubicin; IDA) in current APL treatment protocols.^{14,15}

Here we used the *in vivo* APL model of NB4 cells transplanted into NOD-*scid* IL2r γ ^{null} (NSG) mice¹⁶ to find the impact of cAMP-elevating agents on APL progression in the absence and presence of DNR treatment. Animals injected with stable PGE₂ analog and cAMP phosphodiesterase inhibitor had shortened life span both in the absence and presence of DNR treatment. The *in vitro* studies showed that the cAMP agonists protected NB4 cells against a number of death-inducing cell stressors, including first-line anthracycline drugs like DNR. The protection was mediated by activation of cAMP-dependent protein kinase type I (PKA-I), and accompanied by inactivating phosphorylation of the pro-apoptotic protein Bad and activating phosphorylation of the AML proto-oncogene CREB, both on known PKA-targeted residues.

¹Department of Biomedicine, University of Bergen, Bergen, Norway; ²Institute of Medicine, University of Bergen, Bergen, Norway; ³INSERM, UM1007, Paris, France;

⁴Université Paris Descartes, UMR-S1007, Paris, France; ⁵Translational signaling group, Haukeland University Hospital, Bergen, Norway; ⁶BIOLOG Life Science Institute, Bremen, Germany and ⁷Department of Internal Medicine, Haukeland University Hospital, Bergen, Norway

*Corresponding author: SO Døskeland, Department of Biomedicine, University of Bergen, Jonas Lies vei 91, Bergen N-5009, Norway. Tel: +47 55 58 63 76; Fax: +47 55 58 63 60; E-mail: stein.doskeland@biomed.uib.no

Keywords: ATRA; PKA; CREB; Bad; NB4; BH3

Abbreviations: APL, acute promyelocytic leukemia; ATRA, all-*trans* retinoic acid; cAMP, cyclic AMP; dmPGE₂, 16,16-dimethyl PGE₂; DNR, daunorubicin; IBMX, 3-isobutyl-1-methylxanthine; IDA, idarubicin; PDE, phosphodiesterase; PGE₂, prostaglandin E₂; RCV, roscovitine

Received 28.8.12; revised 09.1.13; accepted 21.1.13; Edited by H-U Simon

The clinical relevance of the NB4 model is supported by studies of blasts from APL and AML patients, which also were protected by cAMP against DNR-induced death *in vitro*. The findings indicate awareness when patients on cAMP-elevating agents like theophylline are treated with anthracyclines, or when cAMP stimulation is considered combined with ATRA to boost APL cell differentiation.

Results

cAMP agonists protect NB4 APL cells against DNR-induced death. We found that human NB4 cells, widely accepted as being representative of human APL,⁵ were strongly protected by cAMP agonists against death induced by the first-line anti-leukemic anthracycline drug DNR. The degree of protection (Figure 1a, main panel) correlated with the cellular cAMP level, which was raised more when the adenylate cyclase stimulator PGE₂ was combined with the cAMP phosphodiesterase inhibitor 3-isobutyl-1-methylxanthine (IBMX; Figure 1a, upper right inset). The potentiating effect of IBMX and the efficacy of the cAMP analog N⁶-Bz-cAMP (Figure 1a, main panel) both indicated that the protective effect of PGE₂ was mediated by cAMP. As a prelude to intact animal studies, we found that the stable PGE₂ analog 16,16-dimethyl PGE₂ (dmPGE₂) synergized with any of four different cAMP phosphodiesterase inhibitors, including the clinically relevant compounds theophylline (aminophylline), milrinone and rolipram (Figure 1b).

The effects could not be explained by coincidental blocking of one or a few features of cell death, as all the death phenotypes probed for were inhibited by cAMP, including cell membrane blebbing (Figures 1a and b), cell size reduction with diminished forward light scattering (Figure 1c) and phosphatidylserine externalization (Figure 1d). cAMP stimulation also prevented DNR-induced cleavage of pro-caspase 3 and the caspase target Hsp90 co-chaperone p23, known to have a role in leukemic apoptosis^{13,17} (Figure 1e). In view of reports that cAMP can affect drug transporters^{18,19} and concern that cAMP might lead to intracellular sequestration of DNR in intracellular vacuoles, we determined the total cell and the nuclear DNR content. We found identical total DNR concentration in cells incubated with DNR both in the absence

and presence of N⁶-Bz-cAMP (Figure 1f), as well as similar intracellular distribution of DNR, with strong nuclear accumulation and even cytoplasmic content (data not shown).

cAMP failed to protect the AML cell lines Mv4-11 and HL60 against DNR death, whether based on morphological assessment (Figures 2a and b) or (for HL60) cleavage of p23 (Figure 2c). As cAMP agonists enhance DNR-induced cell death in the BNML-derived rat IPC-81 cell AML model,¹³ we conclude that AML cell lines differ greatly in their response to the combination of DNR and cAMP stimulation.

cAMP agonists can protect APL and AML patient blasts against DNR-induced death. To probe which, if any, of the studied cell line models is relevant for human acute myeloid leukemia, we tested leukemic blasts isolated from patients with diagnosed APL or AML (see Supplementary Table S1 for details of disease). None of the blast isolates showed cAMP-enhanced DNR-induced death, as observed in the IPC cells. Rather, all the three APL blast isolates (Figures 2d–f) and six of the seven AML blast isolates (Figures 2g–m) resembled the NB4 cells by being protected against DNR by PGE₂/IBMX. The APL blasts had an average of 47 ± 5.9% (mean ± S.E.M.; n = 3) protection and the AML blasts 41 ± 5.8% (n = 7). With N⁶-Bz-cAMP, the average protection of APL blasts was 51% (data not shown). The NB4 cells appear therefore to be the most relevant cell line to study cAMP effects on anthracycline-induced acute myeloid leukemic blast death.

cAMP agonists protect NB4 cells under *in vitro* conditions relevant for the leukemic bone marrow and enhance APL progression in a NB4 orthotropic NSG model. In order to better judge the intact organism relevance, additional *in vitro* experiments were conducted to cover DNR and IDA concentrations likely to be encountered *in vivo*²⁰ and to mimic the hypoxic nature of leukemic cell bone marrow niches.²¹ We demonstrated that cAMP agonists protected NB4 cells also under hypoxic conditions, and against a wide range of anthracycline concentrations (0.1–5 μM DNR and 10–500 nM IDA), and for periods up to 32 h (Figure 3a, Supplementary Figure S1a).

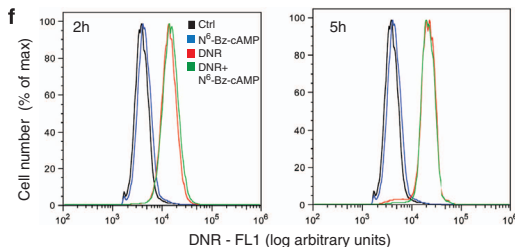
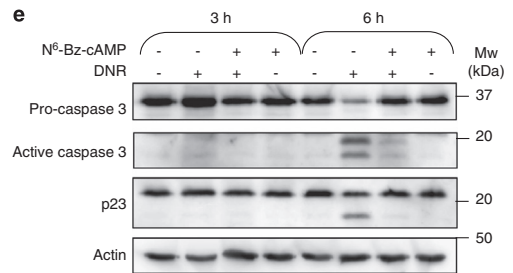
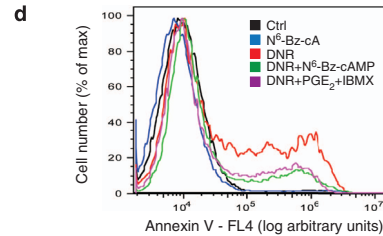
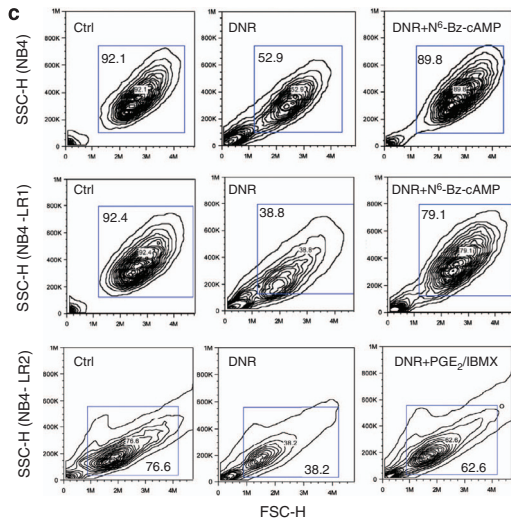
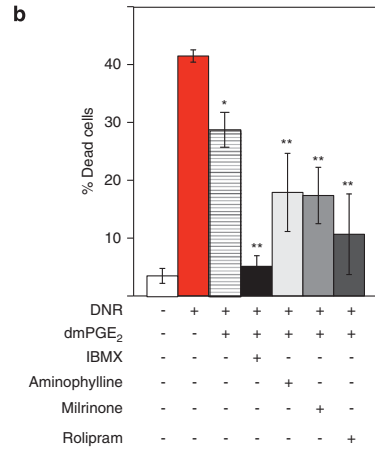
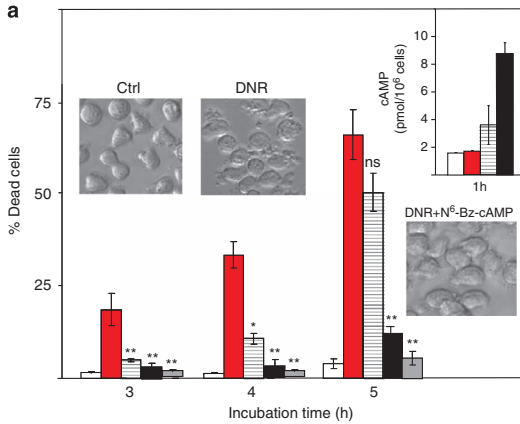
In current standard protocols for APL treatment, DNR or IDA is administered shortly after the onset of ATRA treatment,

Figure 1 Cyclic AMP agonists protect NB4 cells against DNR-induced cell death in proportion to the intracellular cAMP elevation, and do not interfere with DNR uptake. (a) NB4 cells were treated for 3, 4 or 5 h with □: vehicle; ■: DNR (5 μM), ▨: DNR + PGE₂ (1.5 μM, added 0.5 h before DNR), ▩: DNR + PGE₂ + IBMX (0.3 mM, added 0.5 h before DNR) or ▪: DNR + N⁶-Bz-cAMP (0.4 mM, added 0.5 h before DNR). Cell death was scored by microscopy (the inserted photomicrographs show cells treated for 5 h), and is given as mean ± S.E.M., n = 7. Significance by Student t-test: **P < 0.01, *P < 0.05, n.s. = not significant. PGE₂, IBMX or N⁶-Bz-cAMP alone had no effect on % dead cells (data not shown). The upper right hand inset shows the cAMP level in cells treated for 1 h under some of the conditions above (□, ■, ▨, ▩), the bars representing the range of two experiments. (b) The cells were treated with DNR (5 μM, 5 h) in the presence or absence of dmPGE₂ (1 μM) together with the PDE inhibitors IBMX (0.1 mM), theophylline ('Aminophylline', 0.15 mM), milrinone (0.15 mM) or rolipram (0.15 mM) as indicated, and cell death scored by microscopy. DmPGE₂, IBMX, aminophylline, milrinone or rolipram did not induce death alone (data not shown). The data are given as mean ± S.E.M., n = 3. Significance by Student t-test: **P < 0.01, *P < 0.05. (c) FACS forward and side scatter analysis for size and granularity of NB4 (upper 3 panels) and NB4-LR1 (middle 3 panels) cells treated for 4 h with vehicle (Ctrl) or DNR (5 μM) in the absence or presence of N⁶-Bz-cAMP (0.4 mM). The lower 3 panels show a similar analysis for NB4-LR2 cells treated for 4 h with vehicle (Ctrl) or DNR (5 μM) in the absence or presence of PGE₂/IBMX (2 μM/0.1 mM). The data shown are representative for four separate experiments. (d) NB4 cells were treated for 4.5 h with vehicle (Ctrl) or N⁶-Bz-cAMP (0.4 mM), or with DNR (5 μM) in the absence or presence of N⁶-Bz-cAMP (0.4 mM) or PGE₂/IBMX (2 μM/0.1 mM), and analyzed for Annexin V binding by FACS. Necrotic cells with positive PI staining (< 5%) were omitted from the analyses. A representative experiment of three is shown. (e) NB4 cells were treated for 3 or 6 h with DNR (5 μM) alone or in combination with N⁶-Bz-cAMP (0.4 mM), and cell extracts analyzed by immunoblotting for Pro-caspase 3 and Hsp90 co-chaperone p23. Actin was used as loading control. The position of selected MW standard is indicated. (f) The strong fluorescence of DNR was used to determine its concentration by flow cytometry of NB4 cells incubated for 2 or 5 h with DNR (5 μM) in the presence or absence of N⁶-Bz-cAMP (0.4 mM). Note the lack of effect of N⁶-Bz-cAMP on DNR content

and later used jointly with ATRA to eliminate ATRA-resistant cells.¹⁵ We tested, therefore, whether cAMP agonists could counteract the DNR-induced death both of NB4 cells starting to undergo differentiation with ATRA (Figure 3b, left panel), and of the ATRA-resistant sub-clones NB4-LR2 and NB4-LR1⁵ (Figures 1c and 3b, right panel). We found that cAMP

stimulation may protect both ATRA-primed NB4 cells and ATRA-resistant NB4 cells against DNR in the presence of ATRA (Figure 3b).

To know whether the cAMP agonists protected specifically against DNR, we tested whether they also could protect against agents promoting unfolded protein stress, like the



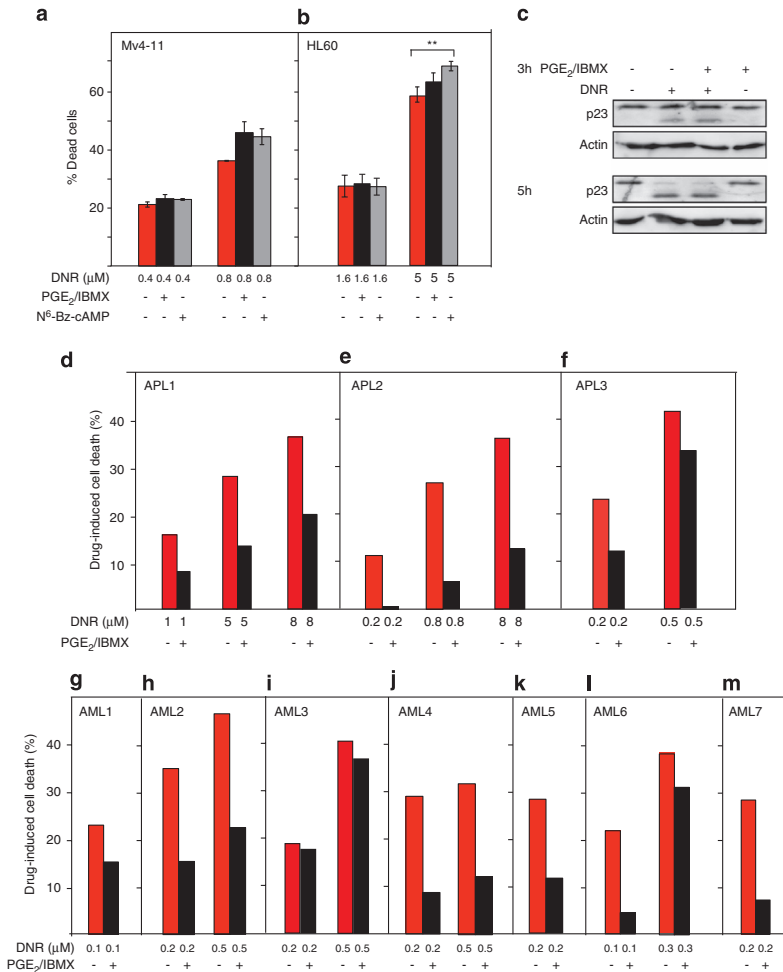


Figure 2 Cyclic AMP agonists can protect APL and AML blasts against anthracycline-induced death. **(a and b)** Mv4-11 **(a)** and HL60 **(b)** AML cells were treated for 4 or 7 h, respectively, with DNR in the absence or presence of PGE₂/IBMX (2 μM/0.15 mM) or N⁶-Bz-cAMP (0.4 mM). The % dead cells was scored by microscopy (chromatin condensation), and is given as mean ± S.E.M., *n* = 3. Significance by Student *t*-test: ***P* < 0.01. **(c)** Extracts isolated from HL60 cells treated with DNR (5 μM) for 3 or 5 h alone or in combination with PGE₂/IBMX (2 μM/0.15 mM) were analyzed by immunoblotting for Hsp90 cochaperone p23. Actin was used as loading control. **(d–m)** Blasts were isolated from peripheral blood of three patients with diagnosed APL (APL1–APL3) and seven AML patients (AML1–AML7) and incubated with DNR alone or together with PGE₂/IBMX (2 μM/0.3 mM) for 3 h (APL1, APL2 (8 μM DNR)) or 24 h (APL2 (0.2 and 0.8 μM DNR), APL3; AML1–7). Samples were assessed for drug-induced cell death by FACS analysis of PI uptake (APL1, APL2) or by Annexin V labeling and PI uptake (APL2, APL3, AML1–AML7). When present, PGE₂/IBMX was added 0.5 h before DNR. Further experimental details are given in the Materials and Methods section. Similar results were obtained when PGE₂/IBMX was replaced by the cAMP analog N⁶-Bz-cAMP (data not shown). A Wilcoxon paired two-tailed comparison test of the ratio of dead cells after incubation with DNR alone and DNR + either PGE₂/IBMX or N⁶-Bz-cAMP (0.4 mM) for all the experiments performed on the APL1–3 blasts, yielded *P* < 0.004 for a protective effect of the cAMP agonists against *P* < 0.007 for the AML1–7 blasts

proteasome inhibitor bortezomib and the HSP90 inhibitor geldanamycin, and strong metabolic stressors like 2-deoxyglucose and rotenone. We found significant protection by cAMP against these stressors both for NB4 cells (Figure 3c) and APL and AML blasts (Supplementary Figure S1b). In conclusion, the elevation of cAMP is expected to promote NB4 cell (and APL blast) survival under conditions thought to

prevail in the leukemic bone marrow both without and with DNR therapy.

We tested, therefore, whether cAMP agonists could promote APL cell survival also *in vivo*, under the assumedly adverse conditions existing in the bone marrow under APL invasion and the even more adverse conditions under DNR treatment. For this purpose, we transplanted NOD-*scid*IL2r^{null}

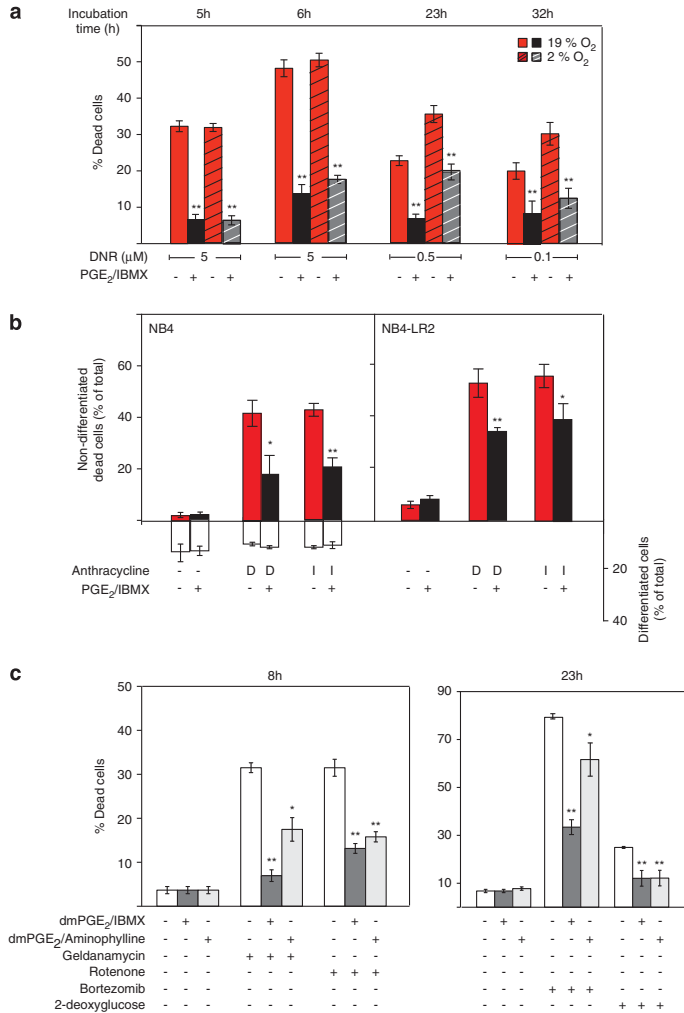


Figure 3 Cyclic AMP-elevating agents protect NB4 cells against death induced by a number of cell stressors under conditions relevant for the leukemic bone marrow. (a) NB4 cells were treated for various periods of time and various concentrations of DNR in the absence or presence of PGE₂/IBMX (2 μM /0.15 mM) in standard (19% O₂, 5% CO₂; solid bars) or hypoxic (2% O₂, 5% CO₂; hatched bars) atmosphere. The % dead cells was scored by microscopy (chromatin condensation and surface morphology), and is given as mean \pm S.E.M., $n = 3$. Significance by Student *t*-test: ** $P < 0.01$, * $P < 0.05$. (b) NB4 and NB4-LR2 cells were primed with ATRA (1 μM , 24 h). They were next incubated for 5 h with DNR (D; 5 μM) or 6 h with IDA (I; 0.5 μM) or vehicle in the absence or presence of PGE₂/IBMX (2 μM /0.1 mM). The % dead cells are shown as upwards solid bars. The % of matured cells was determined by the nitroblue tetrazolium (NBT) reduction assay, and is given as open, downward bars. The ATRA-resistant NB4-LR2 cells were, as expected, NBT negative. The data are given as mean \pm S.E.M., $n = 3$. Significance by Student *t*-test: ** $P < 0.01$, * $P < 0.05$. (c) NB4 cells were treated with the HSP90 antagonist geldanamycin (5 μM), the mitochondrial toxin rotenone (5 μM), the proteasome inhibitor bortezomib (0.2 μM) or the glucose antagonist 2-deoxyglucose (10 mM) for the periods of time indicated in the absence or presence of dmPGE₂ (2 μM)/IBMX (0.15 mM) or dmPGE₂ (2 μM)/aminophylline (0.15 mM). The scoring of dead cells was as a and b

mice (NSG) mice with NB4 cells and injected them with vehicle (control) or dmPGE₂/theophylline. The NB4 cell-injected animals given only vehicle survived from 31–33 days (Figure 4a). The death was preceded by weight loss (Figure 4b). The animals were watched for development of extreme fatigue and/or dorsal limb paralysis before

ethanization. The animals injected with cAMP agonists had shorter life span and more rapid weight loss than the vehicle-injected animals (Figures 4a and b). This difference was attributed to more rapid APL disease development, as the timing of fatigue and paralysis relative to death was similar, and the animals selected for autopsy showed similarly swollen

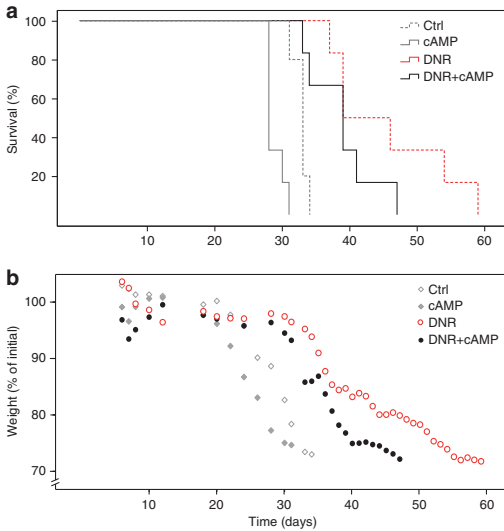


Figure 4 cAMP enhances APL progression in an NB4 orthotopic NSG model. (a) Survival of NB4-transplanted NOD-*scid* IL2 γ^{null} mice (NSG) treated with vehicle (Ctrl, $n=5$), dmPGE $_2$ /aminophylline (125 μ g/kg/20 mg/kg, cAMP, $n=6$), daunorubicin (2.5 mg/kg, DNR, $n=6$) or daunorubicin + dmPGE $_2$ /aminophylline (DNR + cAMP, $n=6$). The group that received cAMP agonists had significantly ($P=0.003$) shorter life span compared with the Ctrl group (average 32.8 against 28.8 days). DNR increased the average life span compared with the Ctrl group from 32.8 to 45.7 days, against 28.8 to 38.8 days for the DNR + cAMP group. (b) The weight of the NB4-transplanted NSG mice described in a relative to that (%) at the time of NB4 cell injection. The data show the average for all mice in each group

bone marrow with brittle femurs and splenomegaly (data not shown).

The orthotopic NSG NB4 cell APL model was also used to test whether cAMP agonists could interfere with the effect of a 3×2.5 mg/kg DNR treatment regime, designed to resemble that used clinically in AML.^{14,22} The DNR treatment had a strong survival-prolonging effect, which was significantly shortened for animals also receiving cAMP agonists (Figures 4a and b). In conclusion, cAMP stimulation protects NB4 cells against adverse *in vivo* conditions likely to be encountered in the leukemic bone marrow. It also accelerates the development of leukemia from injected NB4 cells in the intact NSG mouse, both without and with DNR therapy.

cAMP can counteract DNR-induced NB4 cell death via activation of PKA-I. cAMP has three major intracellular receptors, the cAMP-binding small G protein exchange factor Epac and the regulatory subunit of PKA-I (R1 α , β) and PKA-II (R11 α , β). We excluded Epac as mediator, as the Epac-selective agonist²³ 8-CPT-2'-Me-cAMP was inefficient (data not shown), whereas the PKA-selective N⁶-Bz-cAMP²³ protected NB4 cells as efficiently as increased endogenous cAMP (Figure 1).

The NB4 cell expresses both R1 α and R11 α , β (Figure 5a, left lane), with R1 diffusely speckled in the cytoplasm (Figure 5b, left panel) and R11 confined to the perinuclear region

(Figure 5c, left panel). The defined localization of the R11 subunits, and thereby PKA-II, can channel PKA-II to a subset of substrates,^{24,25} which might be essential for cAMP protection against death. In order to probe whether PKA-II had a specific role, we produced NB4^{R11 α , β KD} cells by RNA-mediated double knockdown of R11 α and R11 β .

The NB4^{R11 α , β KD} cells lacked nearly all the R11 α and most of the R11 β (Figures 5a and c, right panels), but had a compensatory increase of R1 α (Figure 5a, right panel) and unchanged total PKA concentration and basal PKA activity (data not shown). The knockdown of R1 α was not undertaken, in part because a selective inhibitor Rp-8-Br-cAMPS²⁶ is available, and in part because downregulation of R1 α in our hands is not compensated by R11 upregulation. Hence, the resulting excess of free cAMP-unregulated C subunit leads to high PKA activity already in the absence of cAMP stimulation.

The NB4^{R11 α , β KD} cells were as well protected against DNR by N⁶-Bz-cAMP as the NB4^{wt} (Figure 1) and control-transfected NB4^{V0} cells (Figure 5d), indicating that activation of PKA-I alone suffices to protect. This does not exclude that both isozymes can contribute in the NB4^{wt} or NB4^{V0} cells. We probed therefore such cells for cAMP analog pair synergy regarding survival, using both PKA-I- and PKA-II-directed pairs. The isozyme-specific synergy of activation is based on their differential complementarity for binding to sites A1 and B1 of PKA-I or A11 and B11 of PKA-II of each member of a pair (see Supplementary Tables S2 and S3 for details of the analogs, including the new 2-CI-8-HA-cAMP). The PKA-I directed analog pair synergized both in the NB4^{V0} and NB4^{R11 α , β KD} cells, the length of the horizontal arrows indicating the magnitude of the analog complementarity (Figures 6a and b; see Supplementary Figure S2a,b for alternative plots and additional data). In contrast, the PKA-II-directed analog pair failed to show synergism (Figure 6c, Supplementary Figure S2c). We conclude therefore that R1 subunit of PKA-I is the cAMP receptor mediating the protective action of cAMP in NB4 cells. The conclusion is supported by the ability of the PKA-I-specific competitive inhibitor Rp-8-Br-cAMPS²⁶ to counteract the protective effect of N⁶-Bz-cAMP against DNR (Figure 6d). The pivotal role of PKA suggested that the protective action of cAMP was mediated primarily by phosphorylation of PKA substrate(s).

The phosphorylation state of Bad and CREB in leukemic cells exposed to DNR and cAMP agonists.

PKA has a vast number of direct substrates in the intact cell.^{2,27} Some of these are convergence points between PKA and kinases involved in general survival signaling, such as ERK and members of the PI3-kinase cascade. They may therefore be particularly important for cell survival. Examples are phosphorylation of Serine 75 and 118 in the BH3-only protein Bad^{28,29} (S112 and S155 in murine Bad) and Serine 133 of the transcription factor and AML oncogene CREB.^{30,31}

We found that cAMP stimulation increased S118Bad phosphorylation in both NB4 cells and APL3 patient blasts (Figures 7a and b; Supplementary Figure S3a). The S118 phosphorylation liberates Bcl-2/Bcl-XI sequestered by Bad.²⁹ The phosphorylation of S75 of Bad was high already in non-stimulated NB4 cells (Figure 7a). Bad was presumably constitutively phosphorylated also on S99 in NB4 cells,

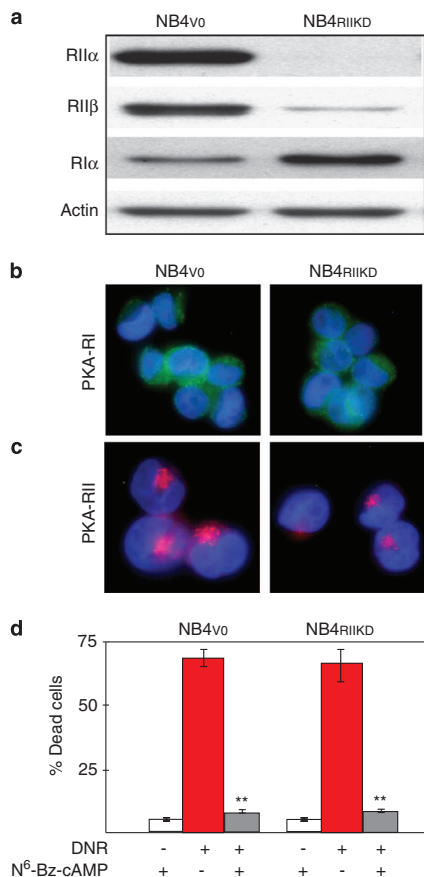


Figure 5 PKA isoenzyme II is dispensable for cAMP-mediated protection against DNR-induced NB4 cell death. (a) Immunoblot analysis showing the effect of knockdown of the RII α and RII β subunit of PKA in NB4_{RIIKD} cells, as compared with NB4 cells transduced with empty vector (NB4_{vo} cells). Note that the decline of RII subunits in the NB4_{RIIKD} cells is compensated by induction of RI α in the NB4_{RIIKD} cells. (b and c) Immunofluorescence analysis showing the sub-cellular localization of the RI (b) and RII (c) subunits of PKA in NB4_{vo} and NB4_{RIIKD} cells. Note the perinuclear position of the RII subunits. DAPI is used to visualize nuclear chromatin. (d) NB4_{vo} and NB4_{RIIKD} cells were treated with DNR (5 μ M, 5 h) alone or with N⁶-Bz-cAMP (0.4 mM), and cell death was scored. The data are given as mean \pm S.E.M., $n = 3$

as their Bad migrated more slowly (apparent $M_w \approx 20$ kDa) upon SDS gel electrophoresis than expected from its M_w of 18.5 kDa (Figure 7a, upper lane), a feature typical for P-S75/S99Bad.^{28,32}

HL60, Mv4-11 AML cells and AML3 patient blasts were not protected by cAMP (Figures 2a, b and i) and did not show any cAMP stimulation of S118Bad phosphorylation. In the HL60 and Mv4-11 cells, S118Bad was highly phosphorylated already in the resting state (Figures 7c and d), and if anything, P-S118Bad decreased slightly upon prolonged incubation with DNR and PGE₂/IBMX (Figures 7c and d). The AML3

blasts had very low Bad expression and P-S118Bad was below the detection limit even with strong cAMP stimulation (data not shown).

The net effect of the cAMP-stimulated S118Bad phosphorylation can be modulated if cAMP also affects the expression of other Bcl-2 family members. cAMP-stimulated NB4, HL60 or Mv4-11 cells had unaltered level of Bax, Bcl-2 and Mcl-1 (Supplementary Figures S3 and S4), whereas DNR caused a rapid decrease of Mcl-1 (Supplementary Figures S3b,c and S4a-c). This suggests that DNR may promote death in all cell lines studied by downregulating Mcl-1.

The consequence of the Mcl-1 downregulation can be compensated by release of Bcl-2 from its complex with Bad in cells showing cAMP-induced S118Bad phosphorylation, like NB4 cells and APL blasts. The BH3-mimetic HA14-1 blocks the ability of Bcl-2 to bind and neutralize Bax³³ and should therefore abolish the beneficial effect of S118Bad phosphorylation. At maximally effective concentration (10 μ M), HA14-1 induced strong NB4 cell death, which was only moderately antagonized by cAMP (Figure 7e, left subpanel). This is compatible with much of the protective action of cAMP being mediated by S118Bad phosphorylation. At lower HA14-1 concentration (4 or 6 μ M) only moderate cell death was observed (Figure 7e, right panel), presumably because only a proportion of the Bcl-2 is occupied by HA14-1. Under such conditions also the Bcl-2 liberated from Bad through S118Bad phosphorylation will be incompletely occupied by HA14-1, which may explain why cAMP provided robust protection against HA14-1 at 4 and 6 μ M (Figure 7e, right panel).

cAMP provided some protection against DNR also in the presence of 10 μ M HA14-1 (Figure 7e, left panel), suggesting that cAMP may protect also via other mechanisms than Bad phosphorylation. A search for additional survival-associated potential PKA targets by quantitative cell phospho-protein flow cytometry³⁴ revealed increased phosphorylation of the PKA substrate site Ser133 of CREB in NB4 cells incubated with the PKA-directed activators PGE₂/IBMX and N⁶-Bz-cAMP, but not with the Epac-directed activator 8-CPT-2'-Me-cAMP (Figure 7f). We tested next the cAMP-protected APL3 and AML4 and the cAMP-nonresponsive AML3 patient blasts (Figures 2f, i and j) for cAMP-induced P-S133CREB. Only in the two cAMP-protected blasts did cAMP increase P-CREB (Figure 7g). The broadly acting cyclin-dependent protein kinase (CDK) 7/9 inhibitor roscovitine (RCV) blocks transcription stimulated by CREB in a rat AML cell line¹³ and induces death through transcriptional inhibition in human neutrophils.³⁵ In the NB4 cells, RCV attenuated the protective effect of cAMP stimulators against DNR (Supplementary Figure S5) without affecting the phosphorylation of Bad (data not shown). This supported the existence of protective actions of cAMP involving CDK-dependent events, possibly mediated via PKA activation of CREB.

Several other survival-related protein phosphorylation events were studied, but were not modulated by cAMP. ERK1/2 and PKB/Akt showed no activatory phosphorylation (Figure 7f). The STAT transcription factors showed unaltered phosphorylation both at sites associated with poor (P-STAT5,³⁴ P-STAT3³⁶) and favorable (P-STAT1³⁴) treatment response in AML (Figure 7f). Furthermore, DNR or cAMP stimulation both failed to affect the phosphorylation

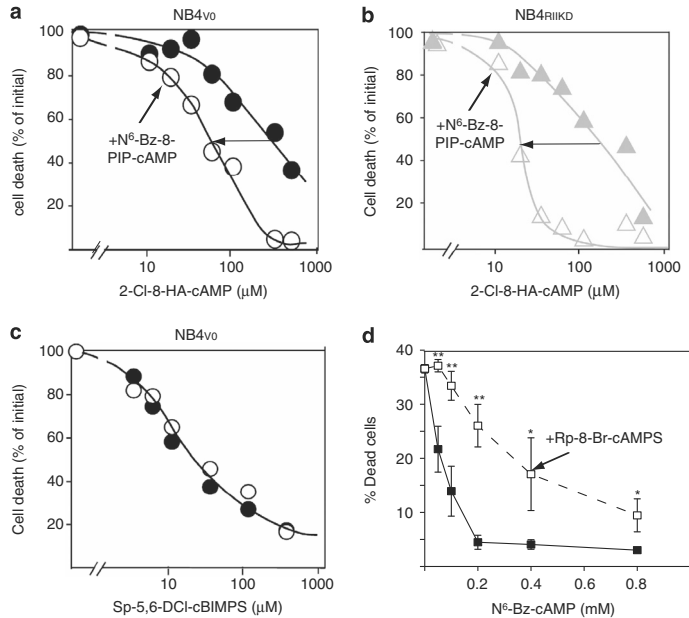


Figure 6 The relative role of PKA isoenzyme I and II to protect against DNR-induced NB4 cell death. **(a and b)** NB4 cells with intact PKA isozymes (NB4_{vo}; **a**) or with knocked-down R11 subunits (NB4_{R11KD}; **b**) were incubated for 4 h with DNR (5 μM) and various concentrations of 2-Cl-8-HA-cAMP in the absence (●, ▲) or presence (○, △) of N⁶-Bz-8-PIP-cAMP (70 μM), which cooperates with 2-Cl-8-HA-cAMP to activate PKA-I, but not PKA-II. The percentage of dead cells dropped more rapidly when 2-Cl-8-HA-cAMP was combined with N⁶-Bz-8-PIP-cAMP (horizontal arrows), indicating that selective activation of PKA-I could protect both NB4_{vo} and NB4_{R11KD} cells against DNR. To better assess the protective synergy between the two analogs (horizontal arrow) the initial cell death was set to 100%. The data represent the average of two experiments, and the original data are shown in Supplementary Figure S2a,b. Similar results were obtained with other PKA-I synergizing analog combinations (data not shown). The enhanced protection with N⁶-Bz-8-PIP-cAMP was judged by Wilcoxon paired comparison test for the 2-Cl-8-HA-cAMP concentration range 30–600 μM, and was found significant ($P < 0.01$) both for the NB4_{vo} and the NB4_{R11KD} cells. **(c)** NB4_{vo} cells were treated as described in **a**, except that the concentration of Sp-5,6-DCl-cBIMPS was varied in the absence (●) or presence (○) of N⁶-Bz-cAMP (8.5 μM), in order to test for PKA-II synergism. The data represent the average of two experiments (Supplementary Figure S2c). Similar results (no synergy) were obtained with other PKA-II synergizing analog combinations (data not shown). **(d)** NB4_{WT} cells were treated for 4 h with DNR (5 μM) and increasing concentrations of N⁶-Bz-cAMP in the absence (■) or presence (□) of the PKA-I antagonist Rp-8-Br-cAMPS (1 mM, added 0.5 h before DNR). The data are given as mean ± S.E.M., $n = 3$. Note that much more N⁶-Bz-cAMP is required to protect against death in the presence of Rp-8-Br-cAMPS. The significance of the pairwise difference (± Rp-analog at each concentration of N⁶-Bz-cAMP) was evaluated by Student's *t*-test: ** $P < 0.01$, * $P < 0.05$.

of the mTOR substrates p70 S6-kinase and 4E-BP1 (Supplementary Figure S6).

We considered also that clinical, cytogenetic or other parameters available for the APL/AML patients and their blasts might give clues to why only the AML3 blasts failed to be protected by cAMP. The AML3 patient has low-risk AML based on cytogenetics (inv8) and the clinical response (full response to induction therapy including DNR). The low-risk status alone does not explain the lack of cAMP response, as other blasts with low-risk cytogenetics Inv8 (AML1 and AML4) and t^{8,37} (AML6) are sensitive to cAMP (Figure 2, Supplementary Table S1). Both NPM1, p53 and Flt3, are wild type in AML3, like for the cAMP-responsive APL3 and AML2 (Supplementary Table S1). Wild-type p53, found important for cAMP to protect lymphoblasts against death,³⁸ was expressed both in the cAMP-resistant AML3 blasts and Mv4-11 cells (see legend to Supplementary Table S1 for details). In conclusion, cAMP protection of DNR-exposed NB4 cells and APL and AML blasts was associated with

inactivating phosphorylation of Bad and activating phosphorylation of CREB.

Discussion

As cAMP stimulates ATRA-induced APL blast maturation,^{3–5} cAMP agonists have been considered as adjuncts to APL therapy.^{6–8} In current APL therapy, an anthracycline is combined with ATRA to eradicate APL blasts resisting ATRA-induced maturation.^{15,39} We show here that cAMP agonists accelerate APL progression in mice carrying the NB4 APL cell line and protect APL patient blasts and NB4 cells against anthracycline-induced death *in vitro*. Also the ATRA-substituted (NB4-LR1) and ATRA-insensitive (NB4-LR2) APL cells were protected by cAMP against DNR. The expected beneficial effect of cAMP on APL cell maturation may therefore be outweighed by boosted survival of ATRA-resistant APL blasts.

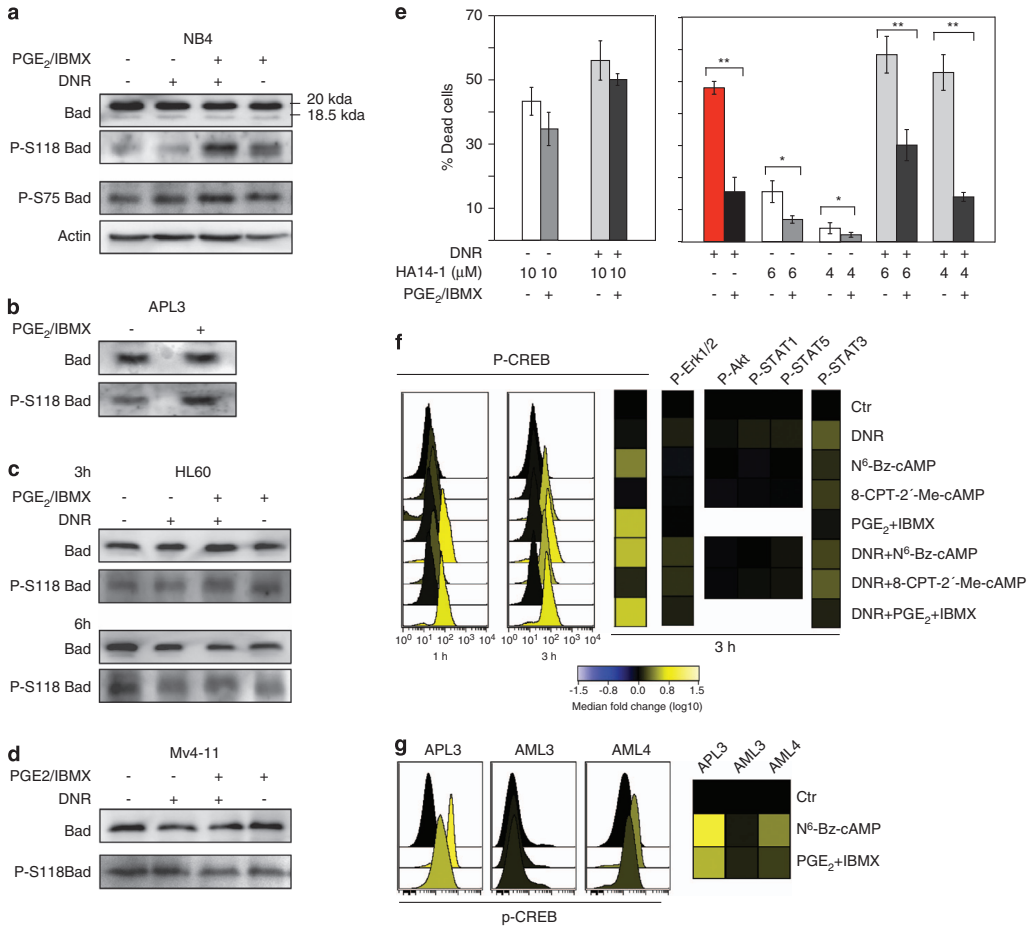


Figure 7 The phosphorylation of Bad and CREB in cAMP- and DNR-exposed leukemic cells. **(a)** NB4 cells were treated with DNR (5 μM) for 3 h alone or in combination with PGE₂/IBMX (2 μM/0.15 mM), and extracts analyzed by immunoblotting for Bad, P-Ser118Bad or P-Ser75Bad, with actin as loading control. The migration corresponding to proteins of Mw 20 and 18.5 kDa is based on interpolation of the migration of relevant standard proteins. **(b)** Blasts isolated from a patient diagnosed with APL (APL3, Supplementary Table S1) were treated *in vitro* for 3 h with PGE₂/IBMX (2 μM/0.3 mM). Cell extracts were analyzed by immunoblotting for Bad and P-Ser118Bad. **(c)** HL60 cells were treated for 3 or 6 h with DNR (5 μM) alone or in combination with PGE₂/IBMX (2 μM/0.15 mM), and cell extracts were analyzed by immunoblotting for Bad and P-Ser118Bad. **(d)** Mv4-11 cells were treated for 5 h with DNR (0.4 μM) alone or in combination with PGE₂/IBMX (2 μM/0.2 mM), and cell extracts were analyzed by immunoblotting for Bad and P-Ser118Bad. **(e)** The NB4 cell death was scored by microscopy after incubation with various concentrations of the BH3 mimetic HA14-1, and DNR (3 μM) and PGE₂/IBMX (2 μM/0.15 mM). For the left subpanel, the cells were incubated for 3.5 h with 10 μM HA14-1 either alone or during the last 3 h with DNR, PGE₂/IBMX or both. For the right hand subpanel, the incubation time with HA14-1 (4 or 6 μM) was 9.5 h, during the last 9 h with DNR, PGE₂/IBMX or both. Data are shown as mean ± S.E.M., n = 3–6. Significance by Student *t*-test: ***P* < 0.01, **P* < 0.05. **(f)** Phospho-protein analysis by flow cytometry for CREB, Erk1/2, Akt, STAT1, STAT5 and STAT3 (see Materials and Methods for detail of phospho-residue detected). NB4 cells were incubated for 1 or 3 h with DNR (5 μM), the PKA agonist N⁶-Bz-cAMP (0.4 mM), the Epac agonist 8-CPT-2'-Me-cAMP (0.5 mM) or the cAMP-elevating agents PGE₂/IBMX (2 μM/0.1 mM). The phospho-epitope labeling intensity is shown as histograms (left subpanels) and heat maps (right subpanels). The control sample was used as a baseline for the heat maps. See Materials and Methods for further experimental details. **(g)** Phospho-protein analysis by flow cytometry for CREB in blasts isolated from three patients (APL3, AML3 and AML4; Supplementary Table S1). Blasts were treated *in vitro* for 3 h with PGE₂/IBMX (2 μM/0.3 mM) or N⁶-Bz-cAMP (0.6 mM) before fixation and analysis by flow cytometry. The phospho-epitope labeling intensity is shown as histograms (left subpanels) and heat maps (right subpanels). The control sample was used as a baseline for the heat maps

The cAMP protected not only against the multi-targeting anthracycline drugs,^{40,41} but also the glucose metabolism antagonist 2-deoxyglucose, hypoxia/rotenone and ER stress/misfolded protein inducers (the proteasome inhibitor bortezomib and the HSP90 inhibitor geldanamycin). This may explain

why cAMP promoted APL progression also in mice not treated with DNR, and suggests that a natural increase of bone marrow cAMP, as may occur as a consequence of inflammation-induced PGE₂ production⁴² can affect APL cell survival also in the absence of specific treatment.

The protective effect of cAMP appeared to be mediated by PKA rather than Epac, based on the efficiency of cAMP analogs stimulating selectively either PKA or Epac. Although the two PKA isozymes (PKA-I and PKA-II) share the same catalytic subunit, they may serve distinct functions due to differential cAMP sensitivity and cellular localization.^{24,25} The strictly perinuclear PKA-II may have a localized role not directly related to NB4 cell survival, as PKA-II-directed cAMP analog combinations failed to protect against DNR, and cAMP was fully protective in PKA-II-depleted cells (Figures 5 and 6). In contrast, cAMP analog pairs synergizing for PKA-I activation also synergized for protection against DNR, and the protection afforded by a general PKA-activating cAMP analog was counteracted by the PKA-I-directed compound Rp-8-Br-cAMPS. That PKA-I protects against death is not unprecedented. A PKA isozyme switch from PKA-II to PKA-I is associated with both cellular hypertrophy and the malignant state (see Doskeland *et al.*⁴³ for review), and activation of PKA-I can protect mature neutrophils against death.¹⁰ The possibility that PKA-I modulates mTOR phosphorylation and thereby its activity⁴⁴ appears unlikely as the mTOR substrates p70 S6-kinase and 4E-BP1 were unaffected by cAMP in the NB4 cells (Supplementary Figure S6).

A search for pro-survival effects of PKA activation in the cAMP-protected NB4 and APL blasts pointed to increased phosphorylation of S118Bad and S133CREB, both of which are recognized PKA substrate sites.^{29,31} PKA can thereby turn off the Bcl-2/Bcl-Xl sequestering pro-apoptotic function of Bad⁴⁵ and activate the AML oncogene and drug resistance factor CREB.³¹ In HL60 and Mv4-11 cells, where cAMP did not confer protection, the pro-apoptotic action of Bad appeared to be constitutively turned off, as the level of PS118 Bad was high and not modulated further by cAMP elevation. A number of other factors with potential to modulate cell death were studied, but none was regulated by cAMP or correlated with cAMP protection against DNR. Thus, cAMP-stimulated NB4 cells showed unaltered phosphorylation of ERK, STAT family members and mTOR kinase substrates. Furthermore, the non-protected AML3 blasts resembled many cAMP-protected APL/AML blasts regarding clinical parameters, cytogenetics and expression of prognosis-related molecules, like Flt-3, p53 wild type and NPM1 (Supplementary Table S1).

The general survival-promotion expected from Bad phosphorylation and CREB activation^{27,29} help explain the broad cAMP-mediated protection of NB4 cells against a panel of cell stressors. Both Bad and CREB phosphorylation are under current investigation as therapeutic targets in AML and other malignancies.⁴⁶ The antagonism of the cAMP protection by a BH3-only mimetic underscores further the importance and potential druggability of the Bcl-2 family to relieve the cAMP protection of APL cells.

Materials and Methods

Materials. The following substances were from Sigma-Aldrich (Inc., St Louis, MO, USA): DNR, IDA, cycloheximide, RCV, 2-deoxyglucose, geldanamycin, rotenone, ATRA, PGE₂, the BH3 mimetic HA14-1, and the PDE inhibitors IBMX, rolipram and milirone. Bortezomib was from Millenium Pharmaceuticals, Inc (Cambridge, MA, USA). The stabilized PGE₂ analog dmPGE₂ was from Cayman

Chemical (Ann Arbor, MI, USA). The PDE inhibitor theophylline (i.e., its precursor aminophylline) was from Nycomed (Asker, Norway). The cAMP analogs N⁶-benzoyl-cAMP, (N⁶-Bz-cAMP), Rp-8-Br-cAMPS, 8-(4-chlorophenylthio)-2'-O-methyl-cAMP (8-CPT-2'-Me-cAMP), Sp-5,6-DCI-cBIMPS, N⁶-mono-*tert*-butylcarbamoyl-cAMP (N⁶-MBC-cAMP), 8-NH-CH₂-cAMP, N⁶-MB-cAMP, 8-CPT-cAMP, 8-PIP-cAMP and N⁶-benzoyl-8-piperidino-cAMP (N⁶-Bz-8-PIP-cAMP) were from Biolog Life Science Institute (Bremen, Germany). The synthesis of the new cAMP analog 2-Cl-8-hexylamino-cAMP (2-Cl-8-HA-cAMP) was performed as previously described for the synthesis of the related 2-Cl-8-AHA-cAMP.¹³

Origin of the cells used. NB4, NB4-LR1 and NB4-LR2 cells were isolated and grown as described.^{3,47} NB4 cells were grown in RPMI 1640 (Sigma-Aldrich) with 10% fetal bovine serum (Gibco, Grant Island, NY, USA), L-glutamine (2 mM), streptomycin (5 µg/ml) and penicillin (5 U/ml). Mv4-11 and HL60 cells were from ATCC. Mv4-11 cells were grown in Iscove's modified Dulbecco's media (Sigma-Aldrich Inc.) and HL60 in RPMI 1640 supplemented with 10% fetal bovine serum (Gibco), L-glutamine (2 mM), streptomycin (5 µg/ml) and penicillin (5 U/ml). The collection of patient cells was approved by the Regional Research Ethics Committee (Health Region III, Bergen, Norway) and conducted in accordance with the Declaration of Helsinki Principles. For details on patients, see Supplementary Table S1. Samples were collected from patients shortly after the diagnosis of APL or AML, with informed consent, and stored in bio-banks approved by the Norwegian Ministry of Health and the Directorate for Health and Social Affairs. Primary peripheral blood mononuclear cells were isolated by density gradient separation (Ficoll-Hypaque; Nycomed, Oslo, Norway); the percentage of leukemic cells after gradient separation exceeded 95% for all patients. Cells were stored frozen in liquid nitrogen.⁴⁸ After thawing, the blasts were suspended in Stem Span medium (Stem Cell Technologies, Vancouver, BC, Canada) before incubation with agents to be tested for death induction.

Viral knockdown of PKA-R11 α and PKA-R11 β

Knockdown of PKA-R11 α . NB4 cells were transduced with a lentiviral plasmid (pLKO.1/shRNA/PKAR2A, Sigma, CSHGLYC-TRCN0000037806) driving the expression of a short hairpin RNA targeting the sequence:5'-GCTGAGCCCTA TAACCTGAT-3'. The empty vector pLKO.1/TRC, given by D. E. Root (MIT, Cambridge, MA, USA)⁴⁹ was used as control (NB4_{vo} cells). Lentiviral particle production, NB4 cell infection and selection of transduced NB4 cells were as described.⁵⁰

Knockdown of PKA-R11 β . NB4_{wt} and the NB4/pLKO.1/shRNA/PKAR2A subclone with most robust PKA-R11 α protein knockdown were silenced for PKA-R11 β expression by the PRKA-R11 β targeting sequence (hairpin loop in small letters) 5'-GCCCTTAATGTACATAATACACAGAGCAGaccagaccagaccagCTGCTGGGTG ATTGTACATTAAGGCC-3' inserted in the retroviral vector RRI-Green/L071 (provided by Dr. D. Mickle and Dr. J. Lorens, University of Bergen, Norway) downstream of a modified human U6 promoter. The one mismatch (underlined) in the nonspecific strand served to improve the stability and efficacy of the hairpin. L071/shRNA/PKAR11B and L071/empty constructs were transfected into the Phoenix retroviral packaging cell line to produce viral supernatants harvested 2 days after transfection. Infection of NB4 and NB4/pLKO.1/TRC cells was in the presence of 4 µg/ml of protamine sulfate. Infected cells were sorted 9 days after infection based on their GFP fluorescence.

The NB4 orthotropic xenograft model of APL. Male NOD-scid IL2r^γ^{null} (NSG) breeding mice were a generous gift from Dr. L. D. Shultz (Jackson Laboratories, Bar Harbor, Maine, USA¹⁵). The animals (7- to 8-week old) received 5 × 10⁶ NB4 cells (Day 0) via the tail vein. On days 4, 5 and 6 post-transplantation, each animal received one intravenous (0.1 ml i.v.), and two intraperitoneal (0.2 ml i.p.) injections, one 5 min before and one 40 min after the i.v. injection. Group 1 (Ctr, 5 animals) received phosphate-buffered saline (PBS) both i.v. and i.p. Group 2 ('cAMP', 6 animals) received PBS i.v. and a mixture of dmPGE₂ (to 125 µg/kg) and aminophylline (to 20 mg/kg) i.p. Group 3 ('DNR', 6 animals) received DNR (diluted in physiological saline to give 2.5 mg/kg) i.v. and PBS i.p. Group 4 ('DNR + cAMP', 6 animals) received both DNR and the dmPGE₂/aminophylline mixture.

The health status and weight of the mice was monitored and moribund animals were humanely euthanized. The animal experiments were approved by The Norwegian Animal Research Authority and performed in accordance with The

European Convention for the Protection of Vertebrates Used for Scientific Purposes. The survival data are presented according to Kaplan and Meier and survival distributions analyzed by the Mantel-Cox log rank statistics, using PASW Statistics (version 18.0).

Assessment of cell death and determination of cAMP content.

Cells (at 0.5×10^6 /ml) were exposed to various cell death-modulating agents. Apoptosis of cell lines was assessed mainly by microscopy to visualize surface budding and nuclear chromatin condensation. Upon prolonged incubation with apoptogens, some cells underwent secondary necrosis. Although swollen, such cells retained enough of the apoptotic phenotype to be recognized as 'dead'. In most cases, the % of apoptotic + (secondarily) necrotic cells is given as % dead cells. NB4 cell lines were also studied by flow cytometry on a FASC Accuri C6 (BD Biosciences, San Jose, CA, USA, Accuri Cytometry), after staining with Alexa Fluor 647-Annexin V (Molecular Probes, Grand Island, NY, USA) and propidium iodide (PI), and the forward and side scatter determined. At least 50 000 non-gated live cell events were collected for each sample. The determination of fluorescence from fluorescence-labeled Annexin V (binds to phosphatidyl serine) is a challenge for cells treated with DNR, which has a strong fluorescence when excited by the 488-nm blue argon laser. We eliminated the problem by using Annexin V coupled to the far-red Alexa Fluor 647 dye, which was excited with a 635-nm red diode and sampled in the FL-4 channel. PI gives a stronger signal than DNR when excited at 488 nm, particularly when sampled after a long-pass 670-nm filter (FL-3). The DNR content was determined after excitation at 488 nm and sampling in the FL-1 channel.

For primary human blasts at least 30 000 non-gated events were collected for each sample. For the first two samples studied (APL1,2) staining was with PI, and % PI-positive cells taken as % death. For all other samples cell death was determined based on the sum of Annexin V + PI-positive cells. It should be noted that the primary blasts were more prone to (secondary) necrotic death than the cell lines and only minor differences were observed using PI-positive and Annexin V + PI-positive cells.

For study under hypoxic conditions, the medium was pre-equilibrated for 24 h in 2% O₂, 5% CO₂ atmosphere. For statistical analysis, Wilcoxon Paired Comparison test and Student's *t*-Test were used.

The ATRA-induced differentiation of NB4 cells was evaluated by the nitroblue tetrazolium reduction assay as described.³⁷

Determination of cAMP: The cell medium was rapidly removed and cAMP extracted in 5% trichloroacetic acid with 0.1 M HCl. The trichloroacetic acid was extracted with acetone and the extract neutralized in phosphate-HEPES buffer before determination of cAMP by a competitive binding assay based on displacement of [³H]cAMP from the RI α subunit of PKA.³⁷

Immunoblotting and immunocytofluorescence.

Immunoblotting was as described.¹⁷ Proteins were detected with antibodies against, P-Ser155Bad (murine, corresponds to human P-Ser118), Mcl-1, BAX, Pro-caspase 3, PKA-R1 α (Santa Cruz, Biotechnology, Dallas, TX, USA), Bad, Bcl-2, PKA-R1 β , PKA-R1 β (BD Biosciences), P-Ser112Bad (murine, corresponds to human P-Ser75; Cell Signaling, Danvers, MA, USA), p23 (mouse monoclonal JJ3, generously supplied by Dr. D. O. Toft, Mayo Clinic, Rochester, MN, USA) or β -actin (Amersham Biosciences, Piscataway, NJ, USA). For immunofluorescence, cells were collected by centrifugation, fixed in 2% PFA in PBS (10 min), permeabilized in 0.1% Triton X-100 in PBS (10 min) and blocked (2% BSA in PBS, 1 h). Incubation with anti-PKA-R1 and anti-PKA-R1 β (in PBS-BSA) was overnight. After washing in PBS, cells were incubated 1 h with secondary antibody Alexa 488-IgG or Alexa 594-IgG (Invitrogen), washed and mounted on slides with Vectashield containing DAPI (Vector Laboratories, Burlingame, CA, USA). The cell fluorescence was analyzed on a Leica DMRD microscope.

Intracellular phospho-epitope staining for flow cytometry.

Phospho-flow cytometry analysis was performed as previously described.³⁴ Alexa 647-conjugated anti-phospho-CREB (pS133), anti-phospho-STAT1 (pY701), anti-phospho-STAT5 (pY694), anti-phospho-STAT3 (pS727), anti-phospho-Erk1/2 (pT202/pY204) and anti-phospho-Akt (pS473) were from BD Biosciences. At least 30 000 non-gated live cell events were collected for each sample on a FACS Calibur (Becton Dickinson, Franklin Lakes, NJ). Normalization of flow cytometry data was performed by comparing median fluorescence intensity values to an unstimulated control using the log10 ratio of a sample divided by the control. With

this scale an increment of +1 corresponds to a 10-fold increase in median fluorescence intensity.

Conflict of Interest

The authors declare no conflict of interest.

Acknowledgements. This study was supported by the Norwegian Cancer Society, Norske Kvinners Sanitetsforening, The Association pour la Recherche contre le Cancer, The Fondation de France, Cent pour Sang la Vie, Marie-Curie Actions and by Aurora program. The technical assistance of Nina Lied Larsen, Khanh K. Dao, Sjur Huseby, Siri Stromsøy, Lene Vikebø and Mihaela Popa is highly appreciated.

Author contributions

GG, AW, and SOD. designed the research, performed most experiments, analyzed data and wrote the paper. EN, FP, ML and ES-B provided the NB4-LR1 and -LR2 sub-clones and generated the NB4-RIIKD cell line, characterized their content and distribution of PKA subunits, and contributed to data interpretation and writing. UH and FS contributed to syntheses of cAMP analogs. JS, BTG and ØB performed phospho-flow analysis, provided and characterized patient blasts, and helped presenting data. NR and EM designed and performed animal experiments. RK and LH contributed to data analysis.

1. Bos JL. Epac proteins: multi-purpose cAMP targets. *Trends Biochem Sci* 2006; **31**: 680-686.
2. Kopperud R, Krakstad C, Selheim F, Døskeland SO. cAMP effector mechanisms. Novel twists for an 'old' signaling system. *FEBS Lett* 2003; **546**: 121-126.
3. Ruchaud S, Duprez E, Gendron MC, Houge G, Genieser HG, Jastorf B *et al*. Two distinctly regulated events, priming and triggering, during retinoid-induced maturation and resistance of NB4 promyelocytic leukemia cell line. *Proc Natl Acad Sci USA* 1994; **91**: 8428-8432.
4. Habib A, Hamade E, Mahfouz R, Nasrallah MS, de The H, Bazarbachi A. Arsenic trioxide inhibits ATRA-induced prostaglandin E2 and cyclooxygenase-1 in NB4 cells, a model of acute promyelocytic leukemia. *Leukemia* 2008; **22**: 1125-1130.
5. Roussel MJ, Lanotte M. Maturation sensitive and resistant t(15;17) NB4 cell lines as tools for APL pathophysiology: nomenclature of cells and repository of their known genetic alterations and phenotypes. *Oncogene* 2001; **20**: 7287-7291.
6. Parrella E, Gianni M, Cecconi V, Nigro E, Barzago MM, Rambaldi A *et al*. Phosphodiesterase IV inhibition by piclamilast potentiates the cytodifferentiating action of retinoids in myeloid leukemia cells. Cross-talk between the cAMP and the retinoic acid signaling pathways. *J Biol Chem* 2004; **279**: 42026-42040.
7. Guillemin MC, Raffoux E, Vitoux D, Kogan S, Solihli H, Lallemand-Breitenbach V *et al*. *In vivo* activation of cAMP signaling induces growth arrest and differentiation in acute promyelocytic leukemia. *J Exp Med* 2002; **196**: 1373-1380.
8. Nasr R, Guillemin MC, Ferni O, Solihli H, Peres L, Bertainier C *et al*. Eradication of acute promyelocytic leukemia-initiating cells through PML-RARA degradation. *Nat Med* 2008; **14**: 1333-1342.
9. Fox S, Leitch AE, Duffin R, Haslett C, Rossi AG. Neutrophil apoptosis: relevance to the innate immune response and inflammatory disease. *J Innate Immun* 2010; **2**: 216-227.
10. Krakstad C, Christensen AE, Døskeland SO. cAMP protects neutrophils against TNF- α -induced apoptosis by activation of cAMP-dependent protein kinase, independently of exchange protein directly activated by cAMP (Epac). *J Leukoc Biol* 2004; **76**: 641-647.
11. Geering B, Simon HU. Peculiarities of cell death mechanisms in neutrophils. *Cell Death Differ* 2011; **18**: 1457-1469.
12. Garcia-Bermejo L, Perez C, Vilaboa NE, de Blas E, Aller P. cAMP increasing agents attenuate the generation of apoptosis by etoposide in promonocytic leukemia cells. *J Cell Sci* 1998; **111**(Pt 5): 637-644.
13. Huseby S, Gausdal G, Keen TJ, Kjaerland E, Krakstad C, Myhren L *et al*. Cyclic AMP induces IPC leukemia cell apoptosis via CRE- and CDK-dependent Bim transcription. *Cell Death Dis* 2011; **2**: e237.
14. Sanz MA, Grimwade D, Tallman MS, Lowenberg B, Fenaux P, Estey EH *et al*. Management of acute promyelocytic leukemia: recommendations from an expert panel on behalf of the European LeukemiaNet. *Blood* 2009; **113**: 1875-1891.
15. Sanz MA, Montesinos P, Rayon C, Holowiecka A, de la Serna J, Milone G *et al*. Risk-adapted treatment of acute promyelocytic leukemia based on all-trans retinoic acid and anthracycline with addition of cytarabine in consolidation therapy for high-risk patients: further improvements in treatment outcome. *Blood* 2010; **115**: 5137-5146.
16. Shultz LD, Lyons BL, Burzenski LM, Gott B, Chen X, Challeff S *et al*. Human lymphoid and myeloid cell development in NOD/LSI2-scid IL2R gamma null mice engrafted with mobilized human hematopoietic stem cells. *J Immunol* 2005; **174**: 6477-6489.
17. Gausdal G, Gjertsen BT, Fladmark KE, Demov H, Vandekerckhove J, Døskeland SO. Caspase-dependent, geldanamycin-enhanced cleavage of co-chaperone p23 in leukemic apoptosis. *Leukemia* 2004; **18**: 1989-1996.

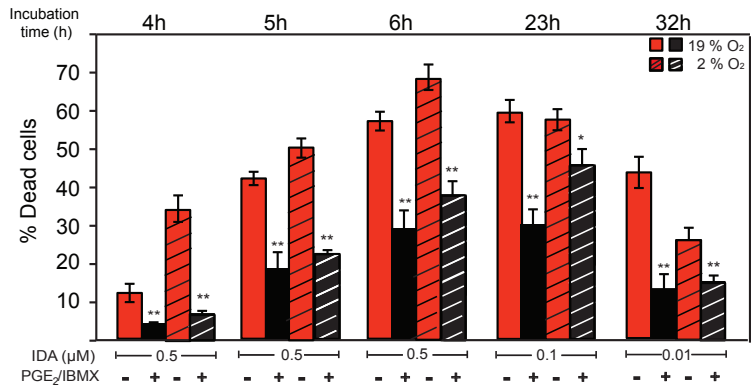
18. Pesic M, Podolski A, Rakic L, Ruzdijic S. Purine analogs sensitize the multidrug resistant cell line (NCI-H460/R) to doxorubicin and stimulate the cell growth inhibitory effect of verapamil. *Invest New Drugs* 2010; **28**: 482–492.
19. Chandra P, Zhang P, Brouwer KL. Short-term regulation of multidrug resistance-associated protein 3 in rat and human hepatocytes. *Am J Physiol Gastrointest Liver Physiol* 2005; **288**: G1252–G1258.
20. Gewirtz DA. A critical evaluation of the mechanisms of action proposed for the antitumor effects of the anthracycline antibiotics adriamycin and daunorubicin. *Biochem Pharmacol* 1999; **57**: 727–741.
21. Bento J, Shi Y, Szymanska B, Carol H, Boehm I, Lu H *et al*. Pronounced hypoxia in models of murine and human leukemia: high efficacy of hypoxia-activated prodrug PR-104. *PLoS One* 6: e23108.
22. Burnett A, Wetzler M, Lowenberg B. Therapeutic advances in acute myeloid leukemia. *J Clin Oncol* 2011; **29**: 487–494.
23. Christensen AE, Selheim F, de Rooij J, Dremier S, Schwede F, Dao KK *et al*. cAMP analog mapping of Epac1 and cAMP kinase. Discriminating analogs demonstrate that Epac and cAMP kinase act synergistically to promote PC-12 cell neurite extension. *J Biol Chem* 2003; **278**: 35394–35402.
24. Skroblin P, Grossmann S, Schafer G, Rosenthal W, Klusmann E. Mechanisms of protein kinase A anchoring. *Int Rev Cell Mol Biol* 2010; **283**: 235–330.
25. DiPilato LM, Cheng X, Zhang J. Fluorescent indicators of cAMP and Epac activation reveal differential dynamics of cAMP signaling within discrete subcellular compartments. *Proc Natl Acad Sci USA* 2004; **101**: 16513–16518.
26. Gjertsen BT, Mellgren G, Otten A, Maronde E, Genieser HG, Jastorf B *et al*. Novel (Rp)-cAMPS analogs as tools for inhibition of cAMP-kinase in cell culture. Basal cAMP-kinase activity modulates interleukin-1 beta action. *J Biol Chem* 1995; **270**: 20599–20607.
27. Naviglio S, Caraglia M, Abbruzzese A, Chiosi E, Di Gesto D, Marra M *et al*. Protein kinase A as a biological target in cancer therapy. *Expert Opin Ther Targets* 2009; **13**: 83–92.
28. Datta SR, Katsov A, Hu L, Petros A, Fesik SW, Yaffe MB *et al*. 14-3-3 proteins and survival kinases cooperate to inactivate BAD by BH3 domain phosphorylation. *Mol Cell* 2000; **6**: 41–51.
29. Daniai NN. BAD: undertaker by night, candyman by day. *Oncogene* 2008; **27**(Suppl 1): S53–S70.
30. Shankar DB, Cheng JC, Kinjo K, Federman N, Moore TB, Gill A *et al*. The role of CREB as a proto-oncogene in hematopoiesis and in acute myeloid leukemia. *Cancer Cell* 2005; **7**: 351–362.
31. Gonzalez GA, Montminy MR. Cyclic AMP stimulates somatostatin gene transcription by phosphorylation of CREB at serine 133. *Cell* 1989; **59**: 675–680.
32. Polzien L, Bajjuls A, Rennfahrt UE, Fischer A, Schmitz W, Zahedi RP *et al*. Identification of novel *in vivo* phosphorylation sites of the human proapoptotic protein BAD: pore-forming activity of BAD is regulated by phosphorylation. *J Biol Chem* 2009; **284**: 28004–28020.
33. Wang JL, Liu D, Zhang ZJ, Shan S, Han X, Srinivasula SM *et al*. Structure-based discovery of an organic compound that binds Bcl-2 protein and induces apoptosis of tumor cells. *Proc Natl Acad Sci USA* 2000; **97**: 7124–7129.
34. Irish JM, Hovland R, Krutzik PO, Perez OD, Bruserud O, Gjertsen BT *et al*. Single cell profiling of potentiated phospho-protein networks in cancer cells. *Cell* 2004; **118**: 217–228.
35. Leitch AE, Lucas CD, Marwick JA, Duffin R, Haslett C, Rossi AG. Cyclin-dependent kinases 7 and 9 specifically regulate neutrophil transcription and their inhibition drives apoptosis to promote resolution of inflammation. *Cell Death Differ* 2012; **19**: 1950–1961.
36. Zhou J, Bi C, Janakakumara JV, Liu SC, Chng WJ, Tay KG *et al*. Enhanced activation of STAT pathways and overexpression of survivin confer resistance to FLT3 inhibitors and could be therapeutic targets in AML. *Blood* 2009; **113**: 4052–4062.
37. Ekanger R, Sand TE, Ogreid D, Christoffersen T, Doskeland SO. The separate estimation of cAMP intracellularly bound to the regulatory subunits of protein kinase I and II in glucagon-stimulated rat hepatocytes. *J Biol Chem* 1985; **260**: 3393–3401.
38. Naderi EH, Findley HW, Ruud E, Blomhoff HK, Naderi S. Activation of cAMP signaling inhibits DNA damage-induced apoptosis in BCP-ALL cells through abrogation of p53 accumulation. *Blood* 2009; **114**: 608–618.
39. Kamimura T, Miyamoto T, Harada M, Akashi K. Advances in therapies for acute promyelocytic leukemia. *Cancer Sci* 2011; **102**: 1929–1937.
40. Laurent G, Jaffrezou JP. Signaling pathways activated by daunorubicin. *Blood* 2001; **98**: 913–924.
41. Gausdal G, Gjertsen BT, McCormack E, Van Damme P, Hovland R, Krakstad C *et al*. Abolition of stress-induced protein synthesis sensitizes leukemia cells to anthracycline-induced death. *Blood* 2008; **111**: 2866–2877.
42. Sakata D, Yao C, Narumiya S. Prostaglandin E2, an immunoactivator. *J Pharmacol Sci* 2010; **112**: 1–5.
43. Doskeland SO, Maronde E, Gjertsen BT. The genetic subtypes of cAMP-dependent protein kinase—functionally different or redundant? *Biochim Biophys Acta* 1993; **1178**: 249–258.
44. Mavrakis M, Lippincott-Schwartz J, Stratakis CA, Bossis I. mTOR kinase and the regulatory subunit of protein kinase A (PRKAR1A) spatially and functionally interact during autophagosome maturation. *Autophagy* 2007; **3**: 151–153.
45. Youle RJ, Strasser A. The BCL-2 protein family: opposing activities that mediate cell death. *Nat Rev Mol Cell Biol* 2008; **9**: 47–59.
46. Cho EC, Mitton B, Sakamoto KM. CREB and leukemogenesis. *Crit Rev Oncog* 2011; **16**: 37–46.
47. Duprez E, Ruchaud S, Houge G, Martin-Thouvenin V, Valensi F, Kastner P *et al*. A retinoid acid “resistant” t(15;17) acute promyelocytic leukemia cell line: isolation, morphological, immunological, and molecular features. *Leukemia* 1992; **6**: 1281–1287.
48. Bruserud O, Gjertsen BT, Foss B, Huang TS. New strategies in the treatment of acute myelogenous leukemia (AML): *in vitro* culture of aml cells—the present use in experimental studies and the possible importance for future therapeutic approaches. *Stem Cells* 2001; **19**: 1–11.
49. Moffat J, Gruenberg DA, Yang X, Kim SY, Kloepper AM, Hinkle G *et al*. A lentiviral RNAi library for human and mouse genes applied to an arrayed viral high-content screen. *Cell* 2006; **124**: 1283–1298.
50. Pendino F, Nguyen E, Jonassen I, Dysvik B, Azouz A, Lanotte M *et al*. Functional involvement of RINF, retinoid-inducible nuclear factor (CXXC5), in normal and tumoral human myelopoiesis. *Blood* 2009; **113**: 3172–3181.



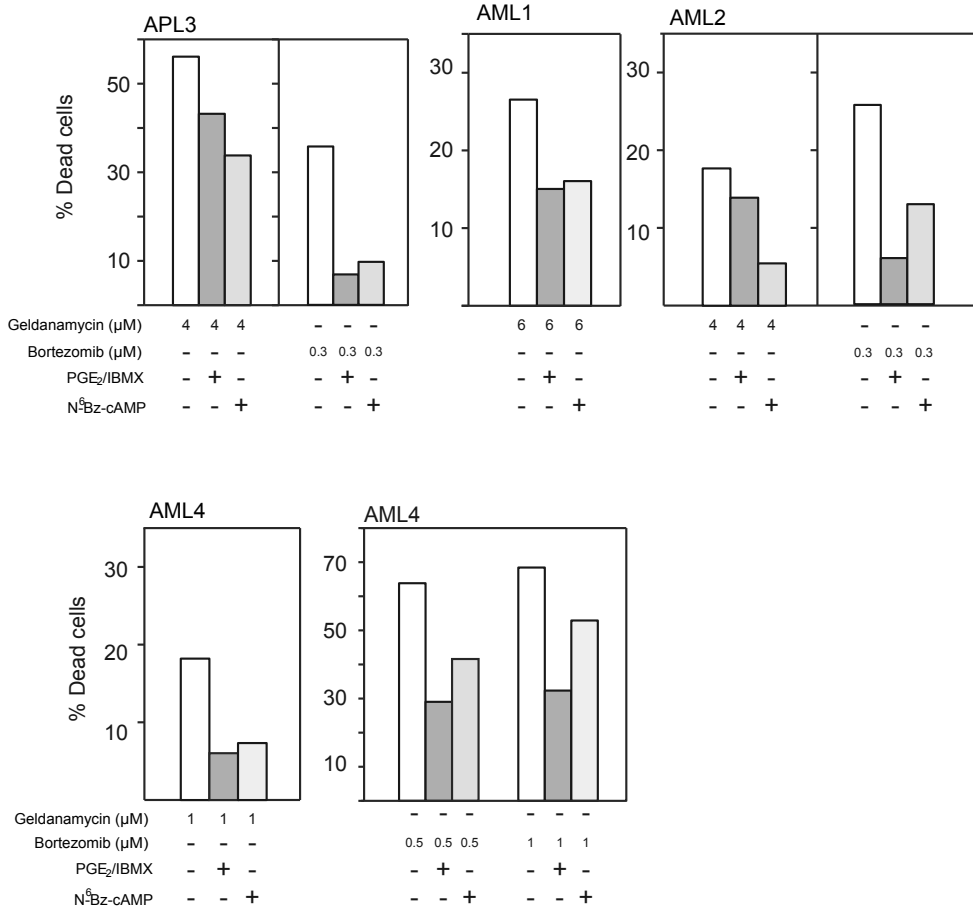
Cell Death and Disease is an open-access journal published by Nature Publishing Group. This work is licensed under the Creative Commons Attribution-NonCommercial-No Derivative Works 3.0 Unported License. To view a copy of this license, visit <http://creativecommons.org/licenses/by-nc-nd/3.0/>

Supplementary Information accompanies this paper on Cell Death and Disease website (<http://www.nature.com/cddis>)

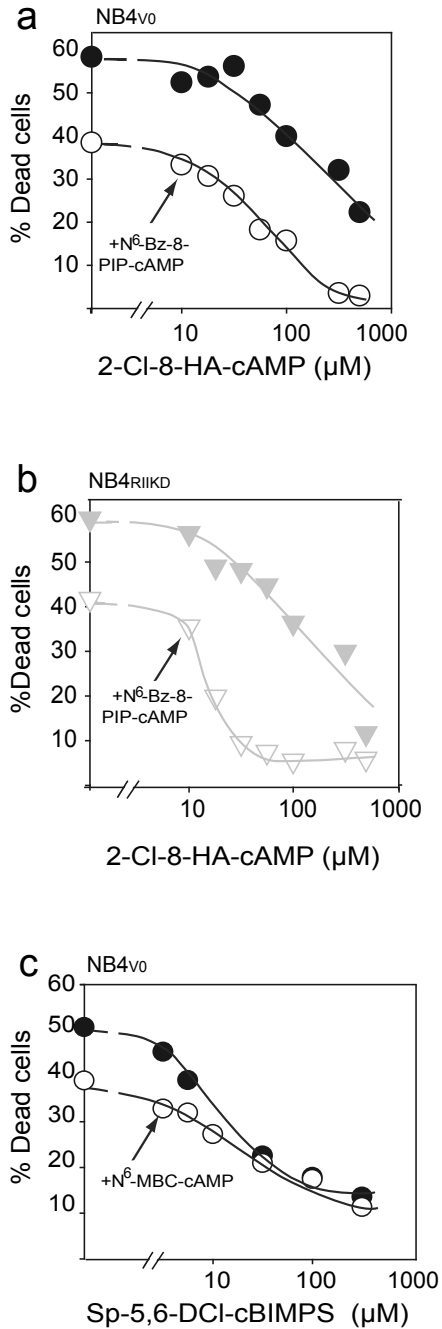
Supplementary Figure S1a



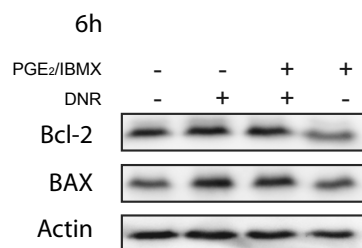
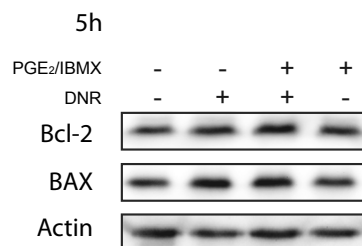
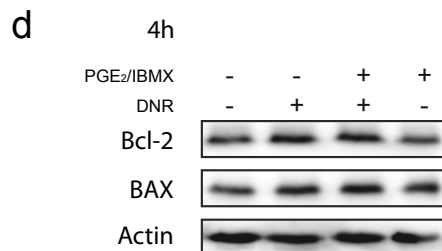
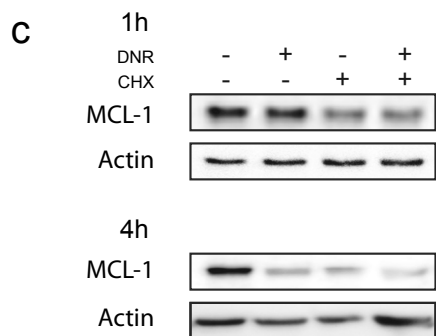
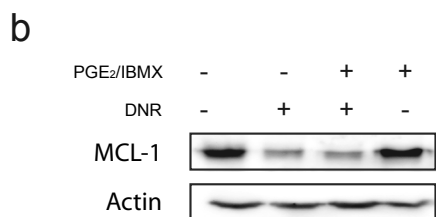
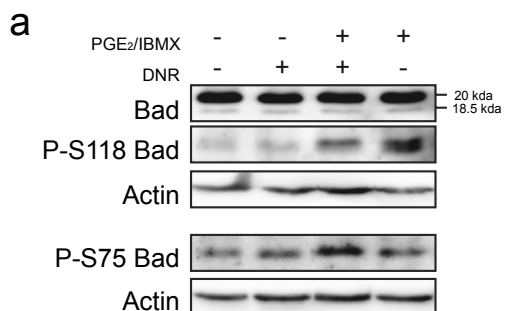
Supplementary Figure S1b



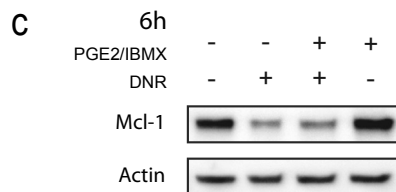
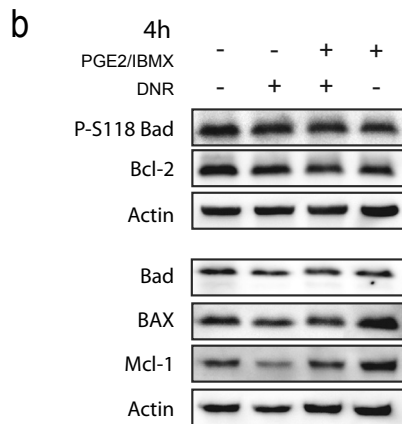
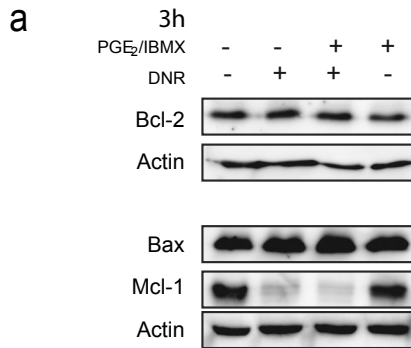
Supplementary Figure S2



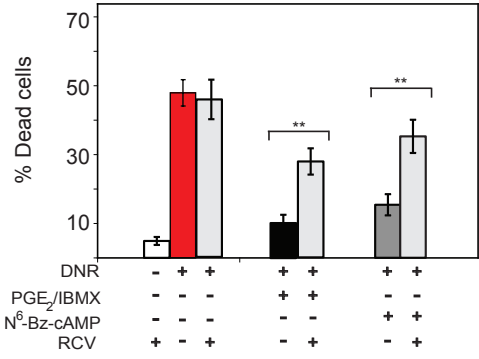
Supplementary Figure S3



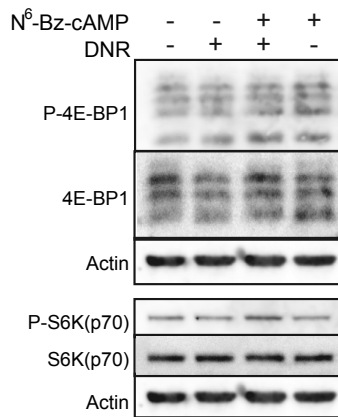
Supplementary Figure S4



Supplementary Figure S5



Supplementary Figure S6



Supplementary Figure Text

Supplementary Figure S1a. Cyclic AMP elevating agents protect NB4 cells against idarubicin-induced death over a range of concentrations, incubation times and under oxygen tension.

NB4 cells were treated for various periods of time and various concentrations of idarubicin (IDA) in the absence or presence of PGE₂/IBMX (2 μM/0.15 mM) in standard (19 % O₂, 5 % CO₂; solid bars) or hypoxic (2 % O₂, 5 % CO₂; hatched bars) atmosphere. The % dead cells was scored by microscopy (chromatin condensation and surface morphology), and is given as mean ± SEM, *n*=3. Significance by Student t-Test: ***p* < 0.01, **p* < 0.05.

Supplementary Figure S1b. cAMP protects APL and AML blasts against cell death induced by geldanamycin and bortezomib.

Some of the blasts analyzed for cAMP protection against DNR (Figure 2), namely APL3, AML1, AML2 and AML4, were also tested for cAMP's ability to protect against cell death induced by the Hsp 90 inhibitor geldanamycin and the proteasome inhibitor bortezomib. The blasts were incubated for 24 h with the agents shown in the Figure. When present, PGE₂/IBMX (2 μM/0.3 mM) or N⁶-Bz-cAMP (0.6 mM) were added 0.5 h before geldanamycin or bortezomib. Cell samples were assessed for drug-induced cell death by FACS analysis of AnnexinV labeling and PI uptake.

Supplementary Figure S2. The relative role of PKA isoenzyme I and II to protect against DNR-induced cell death.

The panels of this figure show the raw data used for panels a,b of Figure 6. **(a,b)** NB4 cells with intact PKA isozymes (NB4_{v0}; **a**) or with knocked-down RII subunits

(NB4_{RHKD}; **b**) were incubated for 4 h with DNR (5 μ M) and various concentrations of 2-Cl-8-HA-cAMP in the absence (●,▲) or presence (○,△) of N⁶-Bz-8-PIP-cAMP (70 μ M), which cooperates with 2-Cl-8-HA-cAMP to activate PKA-I, but not PKA-II, and cell death was determined. Data represent average of two experiments

(c) NB4_{v0} cells were treated with DNR (5 μ M, 5h) and increasing concentrations of Sp-5,6-DCl-cBIMPS in the absence (●) or presence (○) of N⁶-MBC-cAMP (8.5 μ M) and scored for cell death. Data represent average of two experiments.

Supplementary Figure S3. The effect of DNR and elevated cAMP on the NB4 cell expression of Bad, Mcl-1, Bcl-2 and BAX.

(a) NB4 cells were treated for 4 h with DNR (5 μ M) alone or in combination with PGE₂/IBMX (2 μ M/0.15 mM), and cell extracts analyzed by immunoblotting for Bad, P-Ser118Bad and P-Ser75 Bad. Actin was used as loading control. Note the Bad doublet (Mw 20 and 18.5 kDa) detected with the phosphorylation-insensitive antibody (upper lane). Note also the virtual absence of P-S118Bad (P-S155 in murine Bad) in cells not treated with cAMP agonist (lane two). That P-S75Bad (lane four) was little affected by cAMP stimulation could be expected since most of the Bad migrated as a 20 kDa band, rather than as a 18.5 kDa band (lane 1) This suggests that S75Bad was phosphorylated already in the absence of cAMP stimulation, since phosphorylation of Ser75Bad (S112 in murine Bad) converts the migration of Bad, leading to the slowly migrating form migrating with apparent Mw = 20 kDa (1).

(b) NB4 cells were treated with DNR (5 μ M) in the absence and presence of PGE₂/IBMX (2 μ M/0.15 mM) for 3 h, and cell extract immunoblots analyzed for Mcl-1. Actin was used as loading control. The results shown are from one of several experiments with similar results. Note the lacking effect of cAMP elevating agents

(PGE₂/IBMX) on Mcl-1 expression both in the absence and presence of DNR. Similar results were obtained after 4 or 6 h incubation (not shown).

(c) NB4 cells were treated with DNR (5 μM) and CHX (3.6 μM) alone or in combination for 1 and 4 h, and cell extracts analyzed for Mcl-1 expression by immunoblotting. Actin was used as loading control. A typical experiment is shown. Lysates from cells incubated for 2 and 3 h gave similar results as after 4 h (data not shown). Note that the Mcl-1 level declined only slightly faster with CHX than DNR.

(d) NB4 cells were treated as in (b) for 4, 5 and 6 h, and extracts analyzed by immunoblotting for Bcl-2 and BAX. Actin was used as loading control. No change of BAX or Bcl-2 level was observed after DNR or PGE₂/IBMX treatment.

Supplementary Figure S4. The effect of DNR and cAMP elevation on Bcl-2, BAX and Mcl-1 in HL60 and Mv4-11 cells.

(a) HL60 cells were treated for 3 h with DNR (5 μM) alone or in combination with PGE₂/IBMX (2 μM/0.15 mM), and cell extracts analyzed by immunoblotting for Bcl-2, BAX and Mcl-1. Actin was used as loading control.

(b,c) Mv4-11 cells were treated for 4 h (b) or 6 h (c) with DNR (0.4 μM) alone or in combination with PGE₂/IBMX (2 μM/0.2 mM), and cell extracts were analyzed by immunoblotting for Bad, P-Ser118Bad, Bcl-2, BAX and Mcl-1. Actin was used as loading control.

For a-c, note the lack of effect of cAMP elevating agents (PGE₂/IBMX) on the Mcl-1 expression both in the absence and presence of DNR. The levels of Bcl-2 and BAX were not influenced by DNR or PGE₂/IBMX treatment.

Supplementary Figure S5. Roscovitine partly invalidates the cAMP-mediated protection against DNR-induced cell death.

NB4 cells were incubated with various combinations of DNR (5 μ M), PGE₂/IBMX (2 μ M/0.1 mM), N⁶-Bz-cAMP (0.4 mM) or RCV (10 μ M) as indicated. After 5 h cells were fixed and scored for cell death by microscopy, shown as mean \pm SEM, $n = 3-4$. Significance by Student t-Test: ** $p < 0.01$.

Supplementary Figure S6. Treatment with cAMP analog does not modulate the effect of DNR on mTOR substrates.

NB4 cells were treated for 3 h with DNR (5 μ M) alone or in combination with N⁶-Bz-cAMP (0.4 mM), and cell lysates analyzed by immunoblotting for P-Thr37/46-4E-BP1, 4E-BP1, P-Ser371-S6K(p70) and S6K(p70). Actin was used as loading control.

References

1. Datta SR, Katsov A, Hu L, Petros A, Fesik SW, Yaffe MB, *et al.* 14-3-3 proteins and survival kinases cooperate to inactivate BAD by BH3 domain phosphorylation. *Molecular cell* 2000 Jul; **6**(1): 41-51.

Supplementary Tables

Supplementary Table S1. Patient and APL/AML blast characteristics.

Patient	Age	Sex	Cytogenetics	FAB classification	P53	Flt3	NPM1
APL1	49	F	t(15;17)	M3	wt	wt	nd
APL2	32	M	t(15;17)	M3	wt	ITD	nd
APL3	39	M	t(15;17)	M3	wt	wt	wt
AML1	46	F	Inv16	M1	nd	wt	wt
AML2	24	M	Multiple	M2	wt	wt	wt
AML3	48	M	Inv16	M4	wt	wt	wt
AML4	18	F	Inv16	M4	nd	wt	wt
AML5	29	M	Normal	M4	wt	ITD	ins
AML6	47	M	t(8;21)	M4	nd	wt	wt
AML7	29	F	Normal	M5	wt	wt	nd

The age and sex is listed for the 10 patients whose APL or AML blasts were studied, together with cytogenetic findings, FAB classification, and p53, Flt3 and NPM1 mutation state. ITD = internal tandem duplication, ins = insertion, nd = not determined.

The patient APL1 died from intracranial hemorrhage two days after the diagnosis. APL2 and APL3 were treated according to the regimen described by Fenaux et al (1), both reached hematological remission after the induction cycle and were in molecular remission after the second consolidation cycle before start of maintenance therapy.

Patient AML2 and AML7 reached complete hematological remission after two induction cycles, whereas patients AML1, AML3, AML4 and AML6 reached complete remission after the first induction cycle. Patient AML5 relapsed 11 months after the first remission and was then given 2 rounds of intensive chemotherapy, but second remission was not reached. The blasts were obtained shortly after the diagnosis of APL/AML, except for AML5, which were obtained after the diagnosis of relapse.

Note that all 7 APL and AML patient blasts with determined p53 status had wild-type p53. In comparison, the cell lines studied had either deleted p53 (HL60; (2)), mutated p53 (NB4, (3)) or wild type p53 (Mv4-11 (4, 5)).

Supplementary Table S2. The binding affinity (relative to cAMP) to site AI and BI of PKA-RI and site AII, BIII of PKA-RII and lipophilicity index (LogKw) for the cAMP analogs used.

Compound	Rel.aff. AI	Rel. aff. BI	Rel.aff. AII	Rel.aff. BII	Rel. LogKw
cAMP	1.0	1.0	1.0	1.0	1.0
N⁶-Bz-8-PIP-cAMP	1.7	0.018	0.0011	0.065	3.0
N ⁶ -MBC-cAMP	0.5	0.086	12.6	0.066	2.6
2-Cl-8-AHA-cAMP	0.0052	3.9	0.0012	0.5	1.6
2-Cl-8-HA-cAMP	0.0032	1.9	0.0034	2.2	2.6
Sp-5,6-DCl-cBIMPS	0.022	0.13	0.034	14.0	3.0

The cAMP analog retention on reversed phase HPLC columns relative to cAMP was determined as described (6) for the analogs N⁶-Bz-8-PIP-cAMP, 2-Cl-8-HA-cAMP and 2-Cl-8-AHA-cAMP, and reported (in bold) as LogKw, which gives a measure of

lipophilicity and thereby the analog ability to penetrate into cells and cell compartments through biological membranes. The LogKw of the other analogs are from (6). The new analog 2-Cl-8-HA-cAMP (bold) was synthesized from 2-chloroadenosine based on previously described strategies (7, 8). Its binding affinity was determined by displacement of [³H]cAMP from site A and B, as previously validated and described (9, 10). The affinity for cAMP binding sites AI, BI, AII and BII of the other analogs are from (10).

Supplementary Table S3. Expected cAMP-analog pair synergy for PKA-I and PKA-II activation.

cAMP analog pair (x + y)	Predicted synergy PKA-I	Predicted synergy PKA-II
	$\frac{\sqrt{(AI^x + AI^y)(BI^x + BI^y)}}{\sqrt{(AI^x)(BI^x)} + \sqrt{(AI^y)(BI^y)}}$	$\frac{\sqrt{(AII^x + AII^y)(BII^x + BII^y)}}{\sqrt{(AII^x)(BII^x)} + \sqrt{(AII^y)(BII^y)}}$
N ⁶ -Bz-8-PIP-cAMP+ 2-Cl-8-AHA-cAMP	8.41	1.31
N⁶-Bz-8-PIP-cAMP+ 2-Cl-8-HA-cAMP¹⁾	7.08	1.06
8-PIP-cAMP+8-NH-CH ₃ -cAMP	2.25	1.00
8-CPT-cAMP + 8-AHA-cAMP	1.49	1.14
8-PIP-cAMP + N ⁶ -MB-cAMP	1.00	2.63
8-CPT-cAMP + N ⁶ -Bz-cAMP	1.09	3.43
Sp-5,6-DCl-cBIMPS+ N⁶-MBC-cAMP²⁾	1.29	8.32

The predicted synergy is shown between analog pairs for activation of PKA-I or PKA-II. Numbers above 1.0 signify synergism. The analog pairs in bold were used in

the present study to search for PKA-I synergy¹⁾ and PKA-II synergy²⁾, respectively. The other cAMP analog combinations entered have been used in previous studies to probe for PKA isozyme specific cellular events, and are shown for comparison. Note that they show considerable less complementarity (synergy) than the analog combinations used in the present study (Figure 5). The formulas used to calculate the synergism are explained in (11). The table shows that N⁶-Bz-8-PIP-cAMP has less spill-over to PKA-II activation when combined with 2-Cl-8-HA-cAMP (present study) than with 2-Cl-8-AHA-cAMP (10). This advantage comes in addition to the improved lipophilicity (see Supplementary Table S1).

References

1. Fenaux P, Chastang C, Chevret S, Sanz M, Dombret H, Archimbaud E, *et al.* A randomized comparison of all transretinoic acid (ATRA) followed by chemotherapy and ATRA plus chemotherapy and the role of maintenance therapy in newly diagnosed acute promyelocytic leukemia. The European APL Group. *Blood* 1999 Aug 15; **94**(4): 1192-1200.
2. Wergeland L, Sjøholt G, Haaland I, Hovland R, Bruserud O, Gjertsen BT. Pre-apoptotic response to therapeutic DNA damage involves protein modulation of Mcl-1, Hdm2 and Flt3 in acute myeloid leukemia cells. *Mol Cancer* 2007; **6**: 33.
3. Rizzo MG, Zepparoni A, Cristofanelli B, Scardigli R, Crescenzi M, Blandino G, *et al.* Wt-p53 action in human leukaemia cell lines corresponding to different stages of differentiation. *Br J Cancer* 1998 May; **77**(9): 1429-1438.
4. Bamford S, Dawson E, Forbes S, Clements J, Pettett R, Dogan A, *et al.* The COSMIC (Catalogue of Somatic Mutations in Cancer) database and website. *Br J Cancer* 2004 Jul 19; **91**(2): 355-358.
5. Ikezoe T, Yang J, Nishioka C, Yokoyama A. p53 is critical for the Aurora B kinase inhibitor-mediated apoptosis in acute myelogenous leukemia cells. *Int J Hematol* 2010 Jan; **91**(1): 69-77.
6. Schwede F, Maronde E, Genieser HG, Jastorff B. Cyclic nucleotide analogs as biochemical tools and prospective drugs *Pharmacology & Therapeutics* 2000; **87**: 199-226.
7. Genieser HG, Butt E, Bottin U, Dostmann W, Jastorff B. Synthesis of 3',5'-

cyclic phosphates from unprotected nucleosides. *Synthesis* 1989; **1**: 53-54.

8. Long RA, Robins RK, Townsend LB. Purine Nucleosides. XV. Synthesis of 8-amino- and 8-substituted aminopurine nucleosides. *J Org Chem* 1967; **32**: 2751-2756.
9. Dao KK, Teigen K, Kopperud R, Hodneland E, Schwede F, Christensen AE, *et al.* Epac1 and cAMP-dependent protein kinase holoenzyme have similar cAMP affinity, but their cAMP domains have distinct structural features and cyclic nucleotide recognition. *The Journal of biological chemistry* 2006 Jul 28; **281**(30): 21500-21511.
10. Huseby S, Gausdal G, Keen TJ, Kjaerland E, Krakstad C, Myhren L, *et al.* Cyclic AMP induces IPC leukemia cell apoptosis via CRE-and CDK-dependent Bim transcription. *Cell Death Dis* 2011; **2**: e237.
11. Christensen AE, Viste K, Doskeland SO. Cyclic nucleotide analogs as tools to investigate cyclic nucleotide signaling. *Handbook of Cell Signaling, 2nd edition* 2009; **Chapter 212**(Eds. Bradshaw and Dennis, Elsevier, ISBN 97801232741455): 1556-1562.