

## 20<sup>th</sup> anniversary of the PINRO-IMR cooperation in the investigations of fish feeding in the Barents Sea – results and perspectives

Andrey V. Dolgov<sup>1</sup>, Natalia A. Yaragina<sup>1</sup>, Emma L. Orlova<sup>1</sup>

Bjarte Bogstad<sup>2</sup>, Edda Johannesen<sup>2</sup> and Sigbjørn Mehl<sup>2</sup>

<sup>1</sup> PINRO

<sup>2</sup> Institute of Marine Research

### Abstract

Since 1986 the Institute of Marine Research, (IMR), Norway and the Knipovich Polar Research Institute of Marine Fisheries and Oceanography (PINRO), Russia, have carried out a joint research program on the trophic relationships in the Barents Sea. As part of this program, the two institutions have exchanged quantitative diet data from fish in the Barents Sea, mainly cod. Diet data can give information about important trophic links in the ecosystem and the strength of those links. Therefore, diet data is important for quantifying interactions between fish stocks, e.g. by calculating how natural mortality due to predation influences their dynamics. In this paper we give an overview of diet data collected by IMR and PINRO during the last 20 years, and present some results and perspectives for future work.

### Background

Trophic investigations using quantitative diet data started in the Barents Sea in the 1920s-1930s (e.g. Idelson, 1929; Zenkevich and Brotskaya, 1931; Zatsepin and Petrova, 1939; Zatsepin, 1939; Brown and Cheng, 1946) and continued during the 1950-1960s (e.g. Grinkevich, 1957; Sysoeva, 1958; Ponomarenko, 1958). After this period, studies on fish feeding in the Barents Sea were not so intensive and used mainly qualitative diet analyses (e.g. Ponomarenko et al., 1978; Ponomarenko and Yaragina, 1985, 1990a,b).

In the mid-1980s a new joint project was initiated by the Institute of Marine Research (IMR, Bergen, Norway) and Knipovich Polar Institute of Marine Fisheries and Oceanography (PINRO, Murmansk, Russia) to study diet and food consumption of the Barents Sea fish. The motivation for the project was to develop multispecies models for the Barents Sea fish stocks. To be able to quantify stock interactions, detailed quantitative diet data were needed together with a model of stomach evacuation rate.

In the mid-1980s, IMR together with “Fiskeriforsking“ in Tromsø got funding by the Norwegian Research Council for an initial project, where IMR sampled and analyzed diet data (Mehl 1986a), whereas Fiskeriforsking conducted laboratory experiments on stomach evacuation for cod by keeping cod in temperatures similar to what is experienced in the Barents Sea and feeding cod prey typical of the Barents Sea. Similar investigations were conducted in Murman Marine Biological Institute (MMBI) in Russia during 1984-1990 (Orlova, 1991; Orlova et al., 1989c, Orlova and Antonov, 1991). Based on their experiments dos Santos and Jobling (1992, 1995) developed stomach evacuation models that have been fundamental for the project by allowing calculation of consumption of cod using input data from the Barents Sea (Bogstad and Mehl 1992,1997, Dolgov, 1995b).

The joint project was started in 1987 by Alexander Glukhov and Natalia Yaragina from PINRO and Sigurd Tjelmeland and Sigbjørn Mehl from IMR. They initiated and developed the project, the methods for sampling, for analyzing the stomach content in the laboratory and for storing, processing and exchange of data.

The main objectives of the project were to:

- Organize the long-term sampling and quantitative analysis of demersal fish stomachs (mainly cod)
- Calculate the consumption by cod of the commercially important prey species
- Create the basis for the development of multispecies models for the Barents Sea

## **Methods used**

### **Target species**

Cod is the main fish predator in the Barents Sea (Zatsepin and Petrova 1939; Bogstad et al. 2000), and the main focus in the joint project has been on cod. From the start of the project until 1991, both IMR and PINRO collected and exchanged stomach content data on cod and haddock, but because haddock consume only small amounts of commercially important prey species (Burgos and Mehl 1987), IMR stopped sampling stomach content of haddock in 1991, while PINRO continued such sampling. Haddock stomach sampling and analysis of stomach content has followed the same procedures as for cod. Scattered information on stomach content of pelagic fish species (capelin, herring, polar cod, blue whiting) from 1980s was also included in the joint data base.

Since the mid-1990s PINRO started to regularly collect data on diet of other abundant fish species including non-target fishes in the Barents Sea – Greenland halibut, saithe, long rough dab, skates, blue whiting and some others. IMR has since the mid-1990s had some collection of data for saithe, Greenland halibut and blue whiting. These data have not been exchanged so far. At present, both institutes collect diet data from capelin and polar cod, and the exchange of such data is in process.

Data on the diet of marine mammals and seabirds have also been collected, and consumption estimates have been made also for these predators (e.g. Nilssen et al. 2000; Folkow et al. 2000; Bogstad et al. 2000; Barrett et al. 2002, and references therein). We will not go into detail on the work done on these species, as it has not been carried out within the framework of the PINRO-IMR cooperation on investigation on fish feeding. It should be noted, however, that harp seals and minke whales are very important predators on Barents Sea fish – only cod is more important as a fish consumer than these two marine mammal species.

### **Sampling**

Cod stomachs have been sampled on Russian and Norwegian surveys as part of the regular sampling procedures (Mehl and Yaragina 1992). Cod stomachs have also been sampled on Russian commercial vessels with PINRO observers onboard. The sampling procedures have changed over time, including the number of stations sampled, spatial coverage of the sampled stations and the number of stomachs per station. In general, the spatial coverage of the cruises has increased, the number of stations for which stomachs samples have been taken has increased, whereas the number of stomach per stations has decreased (Jakobsen et al. 1997). This change have been motivated by work by Bogstad et al. (1995c) who found that the

variation in diet between stations was much larger than the variation in diet within stations, and that there is strong correlation between stomach samples from the same station. Thus, the effective sample size increases when few stomachs are taken from many stations compared with many stomachs from few stations, even though the total number of stomachs is the same. Currently, 1 stomach per 5 cm length group of cod is taken per station for both Norwegian and joint Russian-Norwegian surveys. The sampling procedures on Russian commercial vessels and Russian national research surveys is different, usually 25 stomachs are analysed from each trawl station using random sampling. Spatial coverage of stations with stomach samples by year and quarter is shown in Appendix 1. Samples taken outside the Barents Sea itself have been included (cod in the Lofoten area, saithe along the Norwegian coast).

### **Laboratory analysis**

The methods used for the quantitative laboratory analysis of stomach content in this project is mainly the same as standard methods used in Russia (Anon., 1974) and for the North Sea stomach sampling project developed in the early 1980s where stomach data was collected and applied in multispecies VPA models (Anon. 1981).

Stomachs are analyzed individually. The total content of sampled stomachs is weighed and the content of the stomachs are divided according to prey species when identifiable. The total weight and the degree of digestion (from 1: newly eaten to 5: digested not identifiable) of the different prey items are recorded. Length measures are taken of prey species that can be identified and when the length is unaltered because of digestion. Finally, the number of identifiable prey individuals per stomach is recorded. From 1984-1992 the resolution of the length measurement in the Norwegian and Russian data varied by the size of the prey (Mehl and Yaragina 1992), but from 1993 on, all the prey items were measured to the nearest cm (or to a finer scale for very small prey).

In the 1990s IMR also did some of the stomach content analysis on board the cruises, but this approach was abandoned because it reduced the quality of the data. Since 1995, PINRO has in addition to the standard methods used a simplified version of the quantitative method, which is conducted onboard at the sea conditions. Total weight of stomach content, visually estimated proportion of prey species and in some cases length and number of commercially important species are determined onboard (Dolgov, 1996).

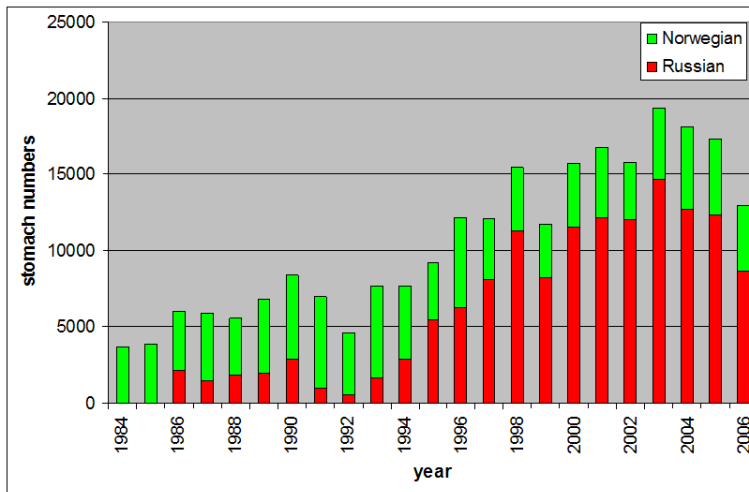
### **Software**

The program 'MAGE' ('stomach' in Norwegian) was developed in the beginning of the project for storage and exchange of data and for simple diet calculations (Westgård 1982, Mehl 1986b). When the project was initiated, stomach content data could not be included in the data bases of the two institutions, and thus a 'stand-alone' stomach content data base was created. MAGE is still used for converting data into a joint format, and for doing diet analysis, but both institutions now have their own data base systems (IMR: STUVW (Mjanger et al. 2006), PINRO: BIOFOX (Anon., 2001)) where stomach data are stored together with the relevant data on the predator (age, length, weight etc.) and station (time, date, position, catch etc.).

### **Data gathered**

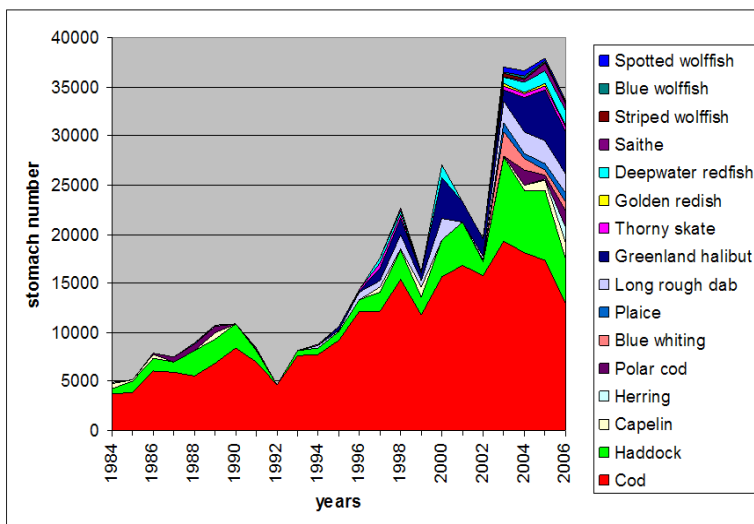
The number of cod stomachs analyzed in the joint project by nation and year is shown in Figure 1. Exchange of haddock data was discontinued in 1991 after approximately 12 000

haddock stomachs had been analyzed. The number of cod stomachs analyzed is now (on the 1<sup>st</sup> January of 2007) approximately 244000.



**Figure 1.** Total number of cod stomachs collected by Norway and Russia during 1984-2006.

From 1984-1995 between 5-10 thousand stomachs were analyzed per year (Figure 2). Since 1996 when new methods of stomach content analysis were applied in PINRO, stomach numbers increased up to 15-20 thousand and then to 35 thousand stomachs per year. This was mainly because PINRO increased the number of species for which stomach were sampled. Total stomach numbers analyzed by PINRO and IMR was approximately 380 thousand by the end of 2006. It should be noted that the joint IMR-PINRO data includes mainly cod after 1991.



**Figure 2.** The number of fish stomachs (all species) analyzed by IMR and PINRO by species and year. The joint data consists mainly of cod after 1991.

Since 1999 PINRO started to collect data on energy content of the most important prey species of cod (capelin, euphausids, shrimp etc.). This allowed for calculation of food rations of cod in energy units (kcal). Bogstad and Mehl (1997) also carried out such calculations, based on energy content data from the literature

## Results and applications

There have been extensive publications from the joint feeding investigations, both refereed papers, institutes publications, ICES papers and working documents, popular science publications, master theses, posters and presentations on symposia and conferences. The publications can be grouped into two main categories; publications on diet, feeding and biology and publications on models.

### Results: feeding, diet and biology

The large body of studies in this category can be grouped in the following way:

- Papers describing the diet of a given species (including consumption calculations)
- Papers on the effect of predation on a given prey species
- Papers on the effect of prey abundance on predator population dynamics

### Papers describing the diet of a given species (including consumption calculations)

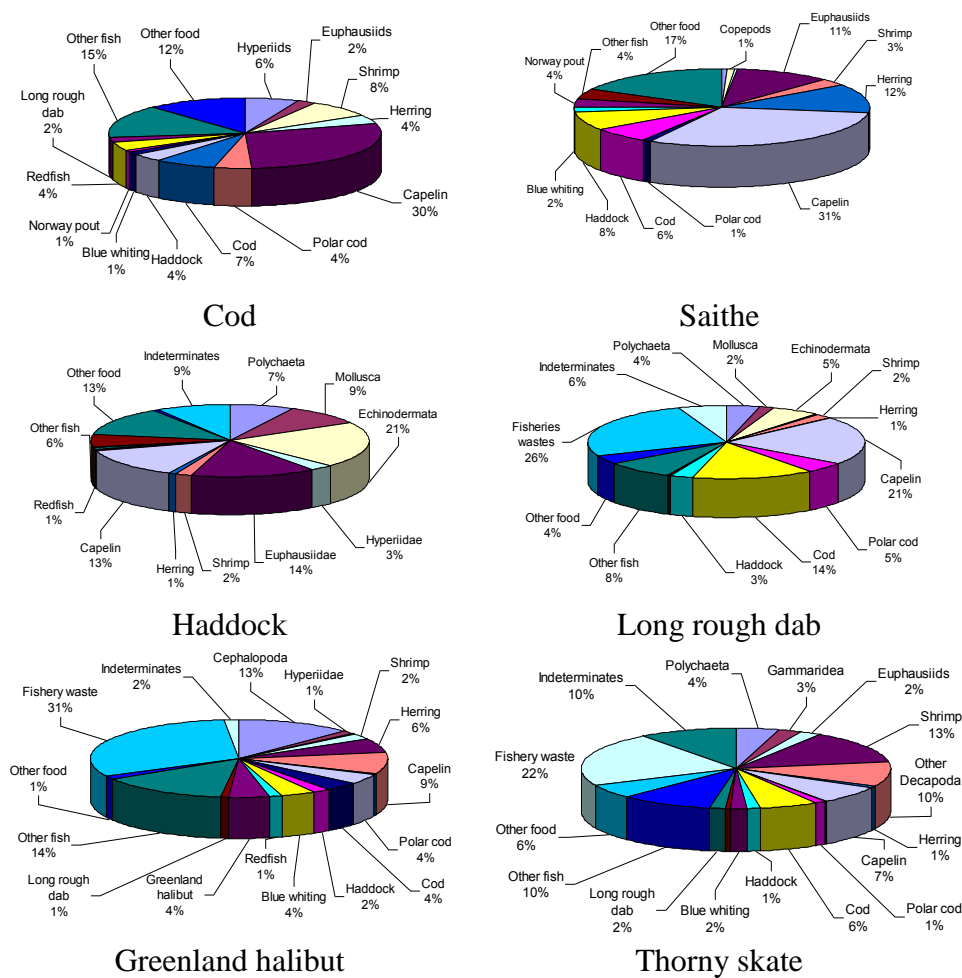
A summary of some key references for the diet of each predator is given in Table 1. Data on total diet composition of the most abundant demersal fishes of the Barents Sea is shown in Figure 3.

**Table 1.** Papers on the diet of each predator

Predator	Reference
Cod	Zatsepin and Petrova 1939, Mehl 1986a, 1989, Orlova and Matishov 1993; Ponomarenko and Yaragina 1996; Bogstad and Mehl 1997, Dolgov 1999, Dalpadado and Bogstad 2004
Haddock	Zatsepin 1939, Tseeb 1964; Sonina 1969; Antipova et al. 1990; Burgos and Mehl 1987; Jiang and Jørgensen 1991, Dolgov 1989b
Redfish	Boldovsky 1944; Dolgov and Drevetnyak 1990, 1993a, 1995
Greenland halibut	Shvagzhdis 1990, Michalsen and Nedreaas 1998; Dolgov 2000, Hovde et al. 2002; Vollen et al. 2004
Skates	Berestovsky 1989; Dolgov 2005a
Blue whiting	Zilanov 1984; Belikov et al. 2004; Beck et al. 2006
Long rough dab	Komarova 1939; Simacheva and Glukhov 1990; Berestovsky 1995; Dolgova and Dolgov 1997
Capelin	Prokhorov 1965; Panasenko 1989; Ajiad and Pushaeva 1991, Orlova et al. 2004
Herring	Boldovsky 1941; Manteifel 1941; Orlova et al. 2000c, 2006f
Polar cod	Belova and Tarverdieva 1964; Pechenik et al. 1973; Tarverdieva et al. 1996; Ajiad and Gjørseter 1990; Orlova et al., 2005f
Saithe	Dolgov 2000, 2002a, Mehl 2005

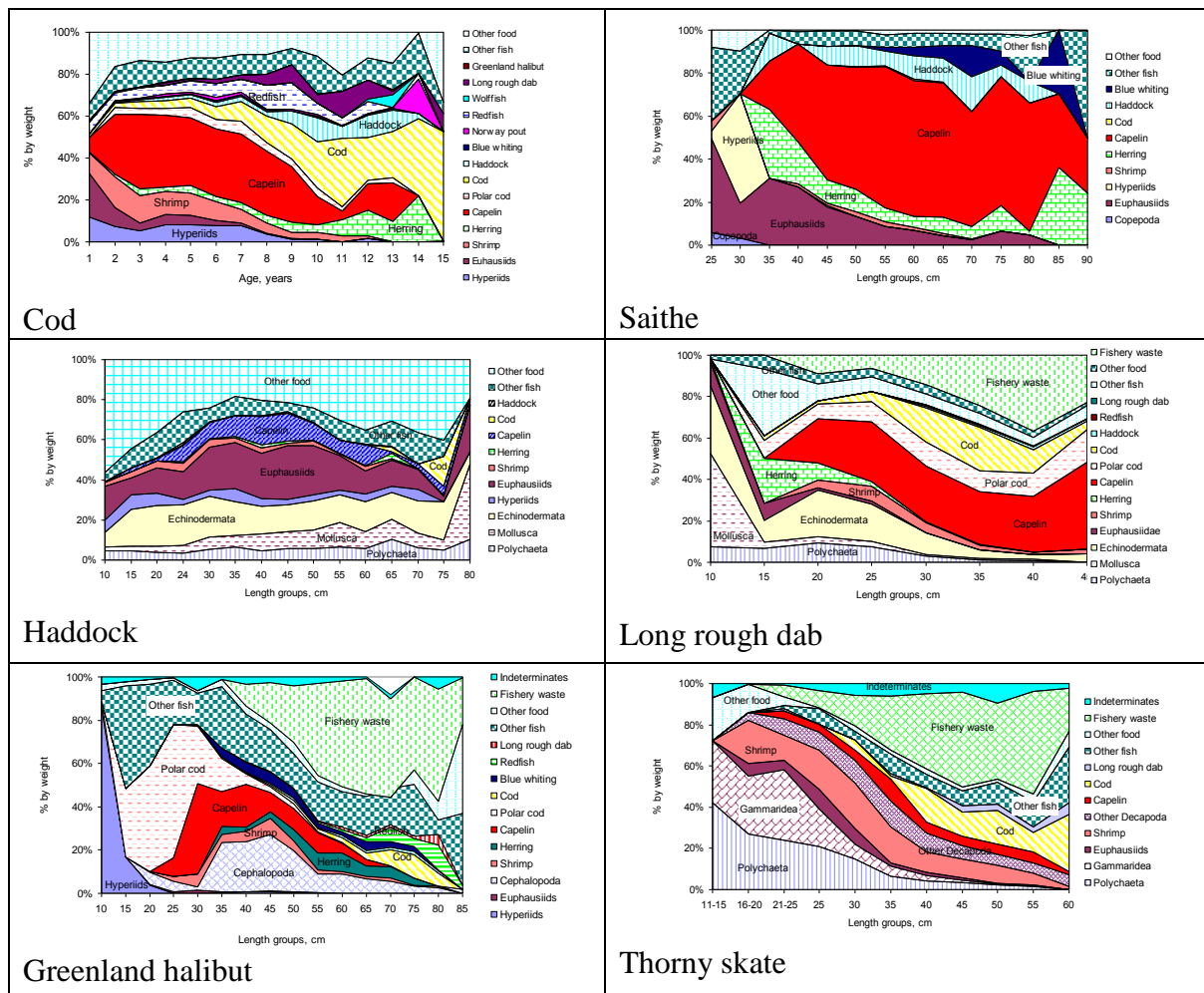
Some trophic groups of the Barents Sea fishes have been identified (Dolgov, 1992). Planktivorous fishes include herring, capelin, polar cod and blue whiting. Haddock, wolffishes, plaice and dab are benthivorous species. Cod, Greenland halibut, larger thorny skate and long rough dab could be considered as piscivorous fishes. Many species have a mixed diet and can relatively easy switch to feed on other more available prey organisms. Regular sampling of fish feeding allowed for new information on species where abundance

sharply increased in the Barents Sea – blue whiting (Belikov et al., 2004) and saithe (Dolgov, 2000) and to evaluate the possible effect on trophic relationships in the ecosystem.



**Figure 3.** Diet composition of the most abundant fishes in the Barents Sea (combined data for all periods), % by weight.

Juveniles and adult fishes of some species usually belong to different trophic groups. Cod juveniles feed mainly on plankton organisms while fishes with lengths above 25-30 cm prey on larger crustaceans (shrimps) and fish. For some fish where rather high numbers of stomachs was sampled length/age changes in its diet were recognized (Figure 4). Such changes were most clearly observed in cod (e.g.; Orlova et al., 1994; 1995a; Dalpadado and Bogstad, 2004). The main tendency was a dominance of small plankton organisms or benthos in the diet of juveniles, appearance of larger crustaceans and small fishes in the diet of medium sized fishes and prevalence of larger fish species in the diet of the largest individuals.

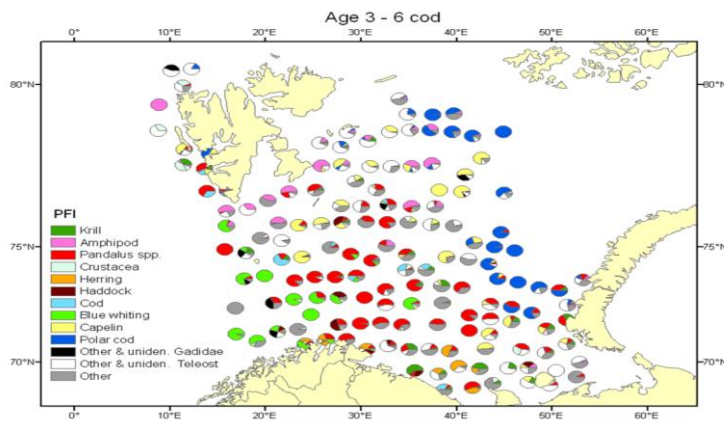


**Figure 4.** Diet composition of different age/length groups of the most abundant fishes in the Barents Sea (combined data for all periods), % by weight.

The diet of 0-group cod in the Barents Sea in the 1970s was studied by Ponomarenko (1958, 1973, 1983, 1984). Survival rates of bottom-dwelling cod until recruitment at age 3 years were found to be connected, in particular, with abundance of euphausiids - the primary food of 0-group cod. The University of Tromsø has recently completed a research program titled ‘Capelin and Herring in the Barents Sea - coexistence or exclusion (Basecoex)’. Within this program, stomach samples were taken, mainly from herring (0-group and older) and 0-group cod. A few stomachs of young haddock, sandeel and saithe were also sampled. The results from this research program are under publication, many of them were presented at the ECONORTH symposium in Tromsø in March 2007.

Large differences were revealed in the diets of some species in the different areas of the Barents Sea, an example of geographic variation in cod diet is shown in Figure 5. Cod diet reflects the geographical distribution of main prey species which again is determined by their seasonal migrations and water masses distribution

Some studies on diurnal variations in diet and variation in diet between fishes distributed at different depths have also been carried out (e.g. Dolgov and Yaragina 1990, Yaragina 1988, Tarverdieva and Yaragina 1989, Ajiad 1990, Michalsen 1993).



**Figure 5.** Geographical variation of diet composition of age 3-6 cod during the ecosystem survey August-September 2005.

Tjelmeland and Alvarez (1994) compared real stomach content data with simulated distributions of stomach content based on a feeding model, and estimated some parameters in the feeding model. This approach was developed further by Magnússon and Aspelund (1997). Comparison of food energetic rations of cod in different areas of the Barents Sea has also been conducted. The important role of capelin and herring in the energetic rations was revealed, as well as higher energetic rations in the Northern Barents Sea (Yaragina et al., 2003; Orlova et al., 2003).

### **Papers on the effect of predation on a prey species**

Cod is a generalist predator so changes in cod diet and consumption reflects changes at lower trophic levels in the ecosystem. For instance, we can see how the fluctuations in capelin abundance influence yearly consumption (Figure 6). We also can see how the increase in blue whiting abundance and the decline in redfish abundance are reflected in cod consumption. The fluctuations of the Barents Sea capelin stock have had strong effects on the population dynamics of its main predators, such as cod and harp seal. For cod, effects were observed on growth, maturation, fecundity and cannibalism, while for harp seal, effects on condition, reproduction, mortality and migration have been seen. The overall picture is that the first capelin collapse in the late 1980s affected the predators to a much larger extent than the second and third collapse (Gjøsæter et al. 2007). One important reason for this is probably that more alternative fish prey was available to the predators during the second and third capelin collapses.

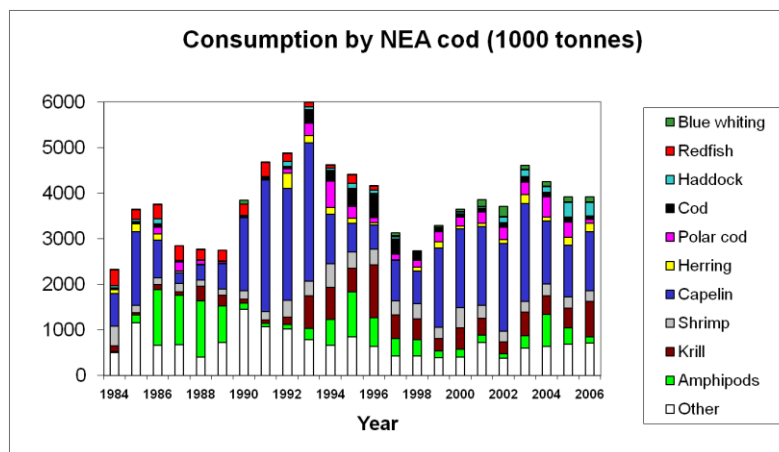
Diet data allowed the calculation of food consumption by some fishes of the Barents Sea. The highest food consumption was observed in cod and can reach 6 million tons (Mehl 1989, Bogstad and Mehl 1992, 1997). Other predators consume less biomass. Biomass consumed by haddock did not exceed 1 mill. tonnes, other predators (Greenland halibut, long rough dab and thorny skate) – 200-250 thousand tons. Biomass of prey consumed by cod is rather variable (Figure 6) and reflect both changes in prey abundance and distribution and cod abundance and distribution as well as oceanographic conditions.

Unfortunately, there is still some discrepancy between the results from Norwegian and Russian consumption calculations (see e.g. ICES 2007a). This is due to use of different spatial and temporal aggregation when the consumption is calculated. Data on diets was used to estimate importance of the most commercially important prey species of cod (shrimp, capelin, herring etc).



**Table 2.** Papers on predation by prey species

Prey	Reference
Cod	Korzhev and Tretyak 1992, Bogstad et al. 1994, Dolgov et al. 1995, Dolgov 1999, Bogstad 2002, Yaragina et al. 2007
Haddock	No papers
Redfish	Dolgaya and Tretyak 1992; Øvstetun 2006
Shrimp	Berenboim et al. 1987, 1992, 2001, Ponomarenko and Yaragina 1990ab, Korsbrekke et al. 1991, Aschan 2000, Johannesen and Aschan 2005, Aschan et al. 2006, Johannesen et al. 2007
Zooplankton	Hassel et al. 1991, Dalpadado et al. 2001, 2002; Orlova et al. 2001b
Long rough dab	Dolgova and Dolgov 1997
Capelin	Ponomarenko and Yaragina 1990b, Ushakov et al. 1992, Huse and Toresen 2000, Dolgov 2002b, Bogstad and Gjørseter 1994, 2001; Johannesen et al. 2006
Herring	Johansen 2002, 2003, Johansen et al. 2004, Orlova et al. 1995, 1996, 2001d, 2006c, Mehl et al. 2006a
Polar cod	Orlova et al. 2001c

**Figure 6.** Annual consumption of major prey species by cod 1984-2006.

### Use of feeding data for some investigations of other aspects of biology of fishes of the Barents Sea

Data obtained during the project were used for the investigations of the cod growth (Ozhigin et al., 1994, 1995, 1996, Mehl and Sunnanå 1991), as well as reproductive potential of cod (Marshall et al., 2000, 2002; Yaragina and Marshall, 2000; Yaragina et al., 2003). Influence of feeding conditions on biological parameters and fatness dynamics of capelin was studied by Orlova et al., (2006a, 2006b), and bioenergetics models for cod have also been developed (Ajiad 1996).

### Results: Models

The joint stomach content data base has been the basis for a variety of multispecies and ecosystem models developed for the Barents Sea. Unfortunately, no 'truly' joint Russian-Norwegian models have so far developed, although there are models which have got some input from both parties.

In the first years of the project, model development was done at IMR, while model development at PINRO started in the mid-1990s. The model development at IMR and their Norwegian cooperation partners until 1997 is summarized by Tjelmeland and Bogstad (1998). We have adapted slightly the model classification given by Plagányi (2007), to group the models applied for the Barents Sea. Most of the models applied have been ‘minimum realistic’ multispecies models, while also some whole ecosystem models (Ecopath with Ecosim) have been applied.

### **Multispecies models**

All the models in this category can be considered as minimum realistic models, they are restricted to represent a limited number of species most likely to have interactions with the target species. The actual implementation of results has been done through extended single-species assessment models; these are described in Section 4.3

### **Age-length-area-structured models (MULTSPEC, Gadget, others)**

Several models with age-length and area structure have been set up for the Barents Sea. The first one was MULTSPEC (Bogstad et al. 1997a), which contained the species cod, capelin, herring, harp seal and minke whale. MULTSPEC was a predecessor of the Gadget modelling framework ([www.hafro.is/gadget](http://www.hafro.is/gadget), Begley and Howell 2004), for which model development is continuing (Lindstrøm et al. 2008, Howell and Bogstad 2007). The present Gadget model for the Barents Sea includes cod, capelin, herring and minke whale, with plans for also including harp seal. Krill abundance is included as an exogenous prey for whales. The model is age-length structured, with a monthly time step and four spatial areas (the Barents Sea and three subsidiary regions), with hindcast and forecast components. Currently, cod and capelin are modeled as having a fully closed life-cycle, while whales and herring have simpler recruitment functions. Predation by whales on cod, capelin and herring, and by cod on cod and capelin is included within the model, although the effects of prey availability on predator condition/growth are not currently modeled. Prey selection for each fish species is according to the length of the predator and prey, and conditioned to the stomach content data. Work is underway to include uncertainty in the forecast part of the model.

Models of this kind for which model development has been discontinued are, in addition to MULTSPEC, the ‘Scenario’ models (Schweder et al. 1998; 2000) and Systmod (Hamre 2003). Also, Bormicon, a predecessor of Gadget, was applied by PINRO in the late 1990s to study cod-capelin interactions.

### **MSVPA**

MSVPA models have been adapted for the Barents Sea (Bulgakova et al., 1995d; Korzhev et al., 1995; Tretyak et al., 1999; Korzhev and Dolgov, 1999) but this approach has now been abandoned. Up to 7 prey species were included (cod, haddock, capelin, shrimp, polar cod, herring, redfish), with cod the only predator. Harp seal and minke whale were considered as external predators. A major problem when using MSVPA for the Barents Sea is that capelin, which is a key species, has almost total spawning mortality and thus is not suitable for use of VPA-type approaches.

### **Other age-structured models**

The Bifrost model (Tjelmeland 2005, [www.assessment.imr.no](http://www.assessment.imr.no)) include the species cod, capelin, harp seals and herring, and is a forward simulation model which is fitted to the observations (survey data, catch data, stomach content data) and which accounts for the

uncertainty in the observations. It is an age-structured model, and for capelin length structure is also included, although in a non-dynamic way.

Stocobar (Filin 2005b) is an age-structured forward simulation model with growth depending on consumption. Feeding, growth, fishery, migration distance and maturity are included. Stocobar has cod as the only predator, and cod, haddock, capelin, shrimp, polar cod, herring, redfish and krill as prey species. STOCOBAR is a further development of the model CONCOD, which was developed to estimation of feeding intensity and yearly rations as well as growth rate of cod (Filin and Gavrilik, 2001). Cod was considered as predator and 6 species (shrimp, capelin, polar cod, herring, juvenile cod and haddock) as prey. The model STRAFICOD was based on CONCOD and developed for analysis of effectiveness of different strategies of cod fisheries management taking into account its trophic relations with capelin. Only two species (cod as predator and capelin as prey) were included in this model.

The Norwegian models AGGMULT and ECONMULT, described by Tjelmeland and Bogstad (1998), but no longer in use, also belong to this category.

### **Ecosystem models**

As part of the collaboration between the Sea Around Us project at the University of British Columbia and the 'Ecosystem Norwegian Sea' program of the Institute of Marine Research, Dommasnes et al. (2001) constructed an Ecopath with Ecosim (EwE) model for the Norwegian Sea and Barents Sea. The model covers 3,116,000 km<sup>2</sup> of Atlantic, Arctic and shelf waters. Thirty functional groups were included, ranging from marine mammals to phytoplankton and detritus. Partly based on the model from 2001, Skaret and Pitcher (2007) constructed a model for the Barents Sea and Norwegian Sea mass balanced for the years 1950 and 2000. They included 58 functional groups including 12 juvenile fish groups. They used Ecosim to simulate the period 1950 to 2000 based on the 1950-model. Catch data on all targeted functional groups were used as forcing functions and the simulated abundance was fitted to 15 abundance time series from VPA, acoustic abundance estimates or CPUE-estimates. A primary production forcing function was added to investigate bottom-up effects in the ecosystem and significantly improved the fit, in particular for the variable capelin abundance. This suggests that bottom-up effects are important in this ecosystem. The model was partly validated using 15 independent time series and time series on stomach data from cod and haddock.

Blanchard et al. (2002) also developed an EwE model of the Barents Sea. The model has been used to investigate the consequences of alternative functional response formulations on the predictions of responses by marine mammals (Mackinson et al. 2003) and to examine effects of model structure on the robustness of outputs (Pinnegar et al. 2005). A model for the Barents Sea by Falk-Petersen et al. (in prep.) to investigate effects of different management regimes on benthos is under construction.

### **Application in assessment and management**

- Important milestones:
- 1987- first calculation of total prey consumption by cod (IMR)
- 1990- stomach data used in joint capelin assessment
- 1991- 5th joint symposium: Interrelationships between fish populations in the Barents Sea (Murmansk, Russia)

- 1995- stomach data used in cod and haddock assessment (ICES Arctic Fisheries Working Group)
- 2000 – calculations of energetic food rations of cod (PINRO)
- 2003- calculation of food consumption by other predators (PINRO)

Interrelations between cod, haddock and capelin were considered by the ICES North-East Arctic Fisheries Working Group as early as 1975 (ICES 1975), but such interrelations were then not taken into account in the assessment.

Since the start of the project application of results to the assessment of commercially important fish stocks and fisheries management was a goal. Consumption estimations of various prey species by different predators is needed to achieve these goals. The most direct application of results from the feeding investigations for management has been the inclusion of cod consumption into fish stock assessment, of commercially important prey species. This has been done using extended single-species assessment models.

Cod consumption was used in capelin assessment for the first time in 1990, to account for natural mortality due to cod predation (Bogstad and Gjøsæter 1994). This methodology has been developed further using the Bifrost and CapTool models (Gjøsæter et al. 2002, Tjelmeland 2005). These models include predation by cod in a single-species, age-length structured capelin model.

Predation by cod on cod and haddock has since 1995 been included in the assessment of these two species in a MSVPA-like way by assuming that  $M=M_1+M_2$ , where  $M_2$  is the predation mortality induced by cod. The amount of cod and haddock eaten is taken from calculations of the cod stock's total consumption by predator age groups and prey species and length/age groups (Bogstad and Mehl 1997, updated calculations given in ICES 2007a). For cod, an iterative procedure is needed to carry out the calculations.

An extended single-species cod Gadget-type model (Frøysa et al. 2002) is used as an additional assessment model for assessing Northeast Arctic cod. The model includes cod cannibalism, and uses capelin abundance as an exogenous alternate prey for cod.

SeaStar (Tjelmeland and Lindstrøm 2005) should also be mentioned, although it at present utilises data from a predator species not considered here (minke whale). It allows for including predation by minke whale on herring in the herring assessment, although SeaStar is at present used only as single-species model in assessment of Norwegian Spring-spawning herring. Cod and harp seals could be included in addition to minke whale as predators on herring.

Shrimp is also a commercially important prey species of cod, and natural mortality of shrimp due to cod predations is probably large. Some attempts were made to estimate shrimp mortality due to cod predation (Berenboim et al., 1992, 2001). However, there is no agreed upon assessment of shrimp, and including cod predation into shrimp assessment have proved to be problematic (Hvingel 2006).

Dolgov (2005b) calculated the amount of commercially important prey consumed by other fish predators (haddock, Greenland halibut, long rough dab and thorny skate), but these consumption estimates are not used in assessment yet.

The Joint Norwegian-Russian Fisheries Commission (JRNC) has initiated a project to make a scientific assessment of optimal harvest (maximum sustainable yield) for the most important species in the Barents Sea, taking into account existing knowledge. This work should be based on an analysis of the population dynamics of Northeast Arctic cod and take into account this species' interaction with other species than cod. The project started in 2005, and will last until 2014. The first phase of the project ends in 2007. Data on fish feeding will be crucial for this project. More information about the project can be found at: <http://www.assessment.imr.no/Request/index.html>.

## **Work by ICES and in EU projects**

Species interactions in the Barents Sea have also been addressed by other parties than Russia and Norway. The ICES Multispecies Assessment Working Group considered multispecies modeling of the Barents Sea at several of its meetings, in particular the 1990 and 1995 meetings (ICES 1990, 1996). The new ICES Working Group on Multispecies Assessment Methods summarized multispecies modeling work in all areas, including the Barents Sea, at its 2007 meeting (ICES, 2007b).

Also, the EU projects *dst*<sup>2</sup> (2000-2003) and BECAUSE (2004-2007) helped advance multispecies modeling of the Barents Sea at IMR, particularly with the development of the Gadget modeling framework. Multispecies modeling, with focus on recruitment processes and stock recovery, will continue further during the new EU project UNCOVER (2006-2010), in which both IMR and PINRO take part.

## **Perspectives and conclusions**

The cooperation of IMR and PINRO has been productive and fruitful. The most important result is a creation of extensive data base on long term time series (more than 20 years) of cod stomach content. It is one of the most extensive and long time series of this kind in the North Atlantic. Joint efforts of both institutes allowed reducing the cost of trophic investigations and simultaneously improving temporal and spatial coverage of sampled data. Stomach data analysis is relatively labour intensive, so careful thinking is needed before stomach sampling effort in the Barents Sea is increased or altered.

The ecosystem approach to management avowed by the ICES requires use of compound multispecies models. Extensive stomach content data such as those available in the Joint stomach data base are necessary for model verification. Further studies are needed to investigate North Atlantic marine ecosystems taking into account climatic changes and impacts of intensive fisheries as well as species interactions.

## **References (including papers not cited in the text)**

- Ajiad, A. M. 1990. Variabilities in stomach contents of cod, collected by demersal and pelagic trawl in the southern part of the Barents Sea. ICES C. M. 1990/G:3, 8 pp.
- Ajiad, A. M. 1996. Assessing growth of Northeast Arctic cod by a bioenergetics model. ICES C. M. 1996/G:16.
- Ajiad, A.M., and Gjøsæter, H. 1990. Diet of polar cod, *Boreogadus saida*, in the Barents Sea related to fish size and geographical distribution. ICES C. M. 1990/G:48, 9 pp.
- Ajiad, A.M., Mehl, S., Korsbrekke, K., Dolgov, A.V., Korzhev, V.A., Tretyak, V.L. and Yaragina, N.A. 1992. Trophic relationships and feeding-dependent growth in the North-East

- Arctic cod. Pp. 45-58 in Bogstad, B. and Tjelmeland, S. (eds.): Interrelations between fish populations in the Barents Sea. Proceedings of the fifth PINRO-IMR Symposium, Murmansk, 12-16 August 1991. Institute of Marine Research, Bergen, Norway.
- Ajiad, A. M., Mehl, S. and Sunnanå, K. 1989. Growth of Northeast Arctic cod in the southern part of the Barents Sea during 1984 - 1988, related to stomach contents. ICES 1989 MSM Symp./Poster No. 5. 11 pp.
- Ajiad, A. M., and Pushaeva, T. 1991. The daily feeding dynamics in various length groups of the Barents Sea capelin during the feeding period. ICES C. M. 1991/H:16, 20 pp.
- Anon. 1974. Methodic manual on investigations of diet and trophic relations of fishes under natural conditions. Moscow, Nauka Press. 254 pp. (in Russian).
- Anon. 1981. Draft manual for the Stomach Sampling Project. Netherlands Institute for Fishery Investigations, IJmuiden. 43 pp.
- Anon. 2001. Instructions and methodic recommendations on the sampling and analysis of biological information in the areas of PINRO investigations. Murmansk, PINRO Press. 291 pp. (in Russian).
- Antipova, T.V., Ponomarenko, I.Ya., and Yaragina, N.A. 1990. Seasonal and annual variations in feeding of the Barents Sea haddock. In Food resources and trophic relations of fishes in the North Atlantic, pp. 131-147. Ed. by T.S.Rass, and S.S.Drobysheva. PINRO Press, Murmansk. (in Russian).
- Aschan, M. 2000. How much shrimp does the cod really eat? Working document #6. Arctic Fisheries Working Group, ICES C.M. 2001/ACFM:2.
- Aschan, M., Johannesen, E., Bogstad, B., and Hvingel, C. 2006. Why does not the shrimp stock in the Barents Sea respond on predation by cod? NAFO SCR Doc. 06/71.
- Barrett, R. T., Anker-Nilssen, T., Gabrielsen, G. W., and Chapdelaine, G. 2002. Food consumption by seabirds in Norwegian waters. ICES Journal of Marine Science 59: 43-57.
- Beck, I. M., Eriksen, K. B., Heino, M., Johannesen, E., and Olsen, E. 2006. Report on the diet of the blue whiting in the Barents Sea in the summer 2005 and in the winters of 2002 and 2006. Fisken og havet 10/2006, 17 pp. Institute of Marine Research, Bergen, Norway.
- Begley, J. and Howell, D. 2004. An overview of GADGET, the Globally applicable Area-Disaggregated General Ecosystem Toolbox. ICES C.M: 2004/FF:13, 15 pp.
- Belikov, S.V., Sokolov, A.M., and Dolgov, A.V. 2004. Blue whiting. In: PINRO investigations in the Spitsbergen archipelago area. Murmansk, PINRO Press. P.167-177. (in Russian)
- Belova, A.V. and Tarverdieva, M. I. 1964. Materials on feeding of polar cod. Trudy MMBI, v. 5(9) : 143-147. (in Russian)
- Berenboim, B.I., and Dolgov, A.V. 1997. New crab species *Geryon tridens* in the cod diet in the Barents Sea. In : Investigations of commercially important invertebrates in the Barents Sea. PINRO Press, Murmansk. P.15-19. (in Russian)
- Berenboim, B.I., Dolgov, A.V., Korzhev, V.A., and Yaragina, N.A. 1999. Impact of Cod on dynamic of Shrimp stock, *Pandalus borealis*, in the Barents Sea and the use of this factor in multispecies models. NAFO SCR Doc.99/87. Serial No. N4159. - P. 1-12.

- Berenboim, B.I., Dolgov, A.V., Korzhev, V.A., and Yaragina, N.A. 2001. The impact of cod on the dynamics of the Barents Sea shrimp (*Pandalus borealis*) as determined by multispecies models. *J. Northw. Atl. Fish. Sci.* 27:1-7.
- Berenboim, B. I., Korzhev, V. A., Tretyak, V. L., and Sheveleva, G. I. 1992. Impact of cod on dynamics of biomass of *Pandalus borealis* in the Barents Sea. In: *Interrelations between fish populations in the Barents Sea : proc. of the 5th PINRO-IMR Symp. (Murmansk, 12-16 August 1991)*. - Bergen : Inst. of Mar. res., 1992. - P.169-180.
- Berenboim, B.I., Ponomarenko, I.Ya., and Yaragina, N.A. 1987. Predator-prey relationships between cod and shrimp in the Barents Sea. *Rybnoe khozyastvo*, 3: 24-26. (in Russian)
- Berestovsky, E.G. 1989. Feeding of skates *Raja radiata* Donovan and *Raja fyllae* Lutken (Rajidae) in the Barents and Norwegian Seas. *Journal of Ichthyology*, 29(6): 994-1002 (in Russian).
- Berestovsky, E.G. 1995. Feeding and feeding strategy of long rough dab in the Barents and Norwegian Seas. *Journal of Ichthyology*, 35(1): 94-104 (in Russian).
- Blanchard, J., Pinnegar, J., and Mackinson, S. 2002. Parameterisation of Ecopath models of the Barents Sea in two states. CEFAS Science series technical report No. 117: 52pp.
- Bogstad, B. 1993. Predation aspects of MULTSPEC. Pp. 215-216 in *Nordic Workshop on Predation Processes and Modelling of Predation*. Stykkisholmur, Iceland, 8-11 September 1992. *Nordiske Seminar- og Arbeidsrapporter 1993:572*. Nordisk Ministerråd, København.
- Bogstad, B. 1997a. A method for estimation of predation mortalities on capelin using a cod-capelin model for the Barents Sea. In: Bogstad, B. *Multispecies models for the Barents Sea* [Dr. scient thesis]. Department of Mathematics, University of Bergen, 1997, 111-158.
- Bogstad, B. 1997b. *Multispecies Models for the Barents Sea*. Dr. scient thesis, Department of Mathematics, University of Bergen, 1997. 158 pp.
- Bogstad, B. 2002. A model for size preferences in cannibalism in Northeast Arctic cod (*Gadus morhua* L.). Annex C.6 in *dst2. Development of Structurally Detailed Statistically Testable Models of Marine Populations*. QLK5-CT1999-01609. Progress report for 1 January to 31 December 2001. Marine Research Institute Technical Report no 87, Marine Research Institute, Reykjavik, Iceland, 320 pp.
- Bogstad, B. and Gjørseter, H. 1994. A method for calculating the consumption of capelin by cod. *ICES J. mar. Sci.* 51: 273-280.
- Bogstad, B., and Gjørseter, H. 2001. Predation by cod (*Gadus morhua*) on capelin (*Mallotus villosus*) in the Barents Sea: implications for capelin stock assessment. *Fisheries Research* 53: 197-209.
- Bogstad, B., Haug, T. and Mehl, S. 2000. Who eats whom in the Barents Sea? *NAMMCO Sci. Publ.* 2: 98-119.
- Bogstad, B., Hiis Hauge, K., and Ulltang, Ø. 1995a. Results of simulation studies using a multispecies model for the Barents Sea (MULTSPEC). *International Whaling Commission SC/47/NA/1*, 33 pp.
- Bogstad, B., Hiis Hauge, K., and Ulltang, Ø. 1995b. MULTSPEC – A multispecies model for fish and marine mammals in the Barents Sea. *Joint ICES/NAFO Symposium on The Role of Marine Mammals in the Ecosystem*, Dartmouth, Canada, 6-8 September 1995. *NAFO SCR Doc.* 95/83, 47 pp.

- Bogstad, B., Hiis Hauge, K., and Ulltang, Ø. 1997.a MULTSPEC – A Multi-Species Model for Fish and Marine Mammals in the Barents Sea. *J. Northw. Atl. Fish. Sci.* 22: 317-341.
- Bogstad, B., Jakobsen, T., and Mehl, S. 1997b. Cannibalism in the North East Arctic Cod in the Barents Sea. In Toresen, R. et al. 1997, *Ressursoversikt 1997, Fiskerihav, Særnr. 1:111-112.* (In Norwegian)
- Bogstad, B., Lilly, G. R., Mehl, S., Pálsson, Ó. K., and Stefánsson, G. 1994. Cannibalism and year-class strength in Atlantic cod (*Gadus morhua* L.) in Arcto-boreal ecosystems (Barents Sea, Iceland and eastern Newfoundland). *ICES mar. Sci. Symp.* 198: 576-599.
- Bogstad, B. and Mehl, S. 1990. The consumption rate of Northeast Arctic cod - a comparison of gastric evacuation models. *ICES CM 1990/G:22*, 12 pp.
- Bogstad, B. and Mehl, S. 1992. The Northeast Arctic cod stock's consumption of different prey species 1984-1989. Pp. 59-69 in Bogstad, B. and Tjelmeland, S. (eds.): *Interrelations between fish populations in the Barents Sea. Proceedings of the fifth PINRO-IMR Symposium, Murmansk, 12-16 August 1991.* Institute of Marine Research, Bergen, Norway.
- Bogstad, B. and Mehl, S. 1995. Relations between recruitment indices and occurrence in cod stomachs of pre-recruits of cod and haddock in the Barents Sea. Pp. 107-120 in Hysten, A. (ed.): *Precision and relevance of pre-recruit studies for fishery management related to fish stocks in the Barents Sea and adjacent waters. Proceedings of the sixth PINRO-IMR Symposium, Bergen, 14-17 June 1994.* Institute of Marine Research, Bergen, Norway.
- Bogstad, B. and Mehl, S. 1997. Interactions between cod and its prey species in the Barents Sea. In: *Forage Fish in Marine Ecosystems. Proceedings of the International Symposium on the Role of Forage Fish in Marine Ecosystems. Alaska Sea Grant College Program Report No. 97-01.* University of Alaska Fairbanks, pp. 591-615.
- Bogstad, B., Pennington, M., and Vølstad, J. H. 1991. An Evaluation of Survey Design for Estimating the Food Consumption by Fish. *ICES C. M. 1991/D:15*, 22 pp.
- Bogstad, B., Pennington, M., and Vølstad, J. H. 1995c. Cost-Efficient survey design for estimating the food consumption by fish. *Fisheries Research* 23: 37-46.
- Bogstad, B., and Tjelmeland, S. 1990. Estimation of predation mortalities on capelin using a cod-capelin model for the Barents Sea. *ICES C. M. 1990/H:16*, 33 pp.
- Bogstad, B. and Tjelmeland, S. 1992. A method for estimation of predation mortalities on capelin using a cod-capelin model for the Barents Sea. Pp. 111-138 in Bogstad, B. and Tjelmeland, S. (eds.) *Interrelations between fish populations in the Barents Sea. Proceedings of the Fifth PINRO-IMR symposium, Murmansk 12-16 August 1991.* Institute of Marine Research, Bergen.
- Bogstad, B., Tjelmeland, S., Tjelta, T., and Ulltang, Ø. 1992. Description of a multispecies model for the Barents Sea (MULTSPEC) and a study of its sensitivity to assumptions on food preferences and stock sizes of minke whales and harp seals. *Int. Whal. Commn. Sci., Comm. Pap.* 44(O 9), 47 pp.
- Boldovsky, G. V. 1941. Food and feeding of herring in the Barents Sea. *Trudy PINRO*, v.1: 219-286 (in Russian).
- Boldovsky, G. V. 1944. Feeding of redfish in the Barents Sea. *Trudy PINRO*, v.8: 307-330 (in Russian).



- Brown, W. W., and Cheng, C. 1946. Investigations into the food of the cod (*Gadus callarias* L.) off Bear Island, and of the cod and haddock (*G. aeglefinus* L.) off Iceland and the Murman coast. Hull Bulletins of Marine Ecology, Vol. III, No. 18, pp. 35-71, November, 1946.
- Bulgakova, T.I., Vasilyev, D.A., Dolgov, A.V., and Frolova, Z.N. 1995a. Seasonal and yearly dynamics of the Barents Sea cod rations. ICES C.M. 1995/G:32, 28 pp.
- Bulgakova, T.I., Vasilyev, D.A., Dolgov, A.V., and Frolova, Z.N. 1995b. Some special algorithms for the Barents Sea fish stomach content data base processing. ICES C.M. 1995/D:13, 12 pp.
- Bulgakova, T.I., Vasilyev, D.A., Dolgov, A.V., and Frolova, Z.N. 1995c. Seasonal and interannual dynamics of the Barents Sea cod rations. Voprosy ikhtyologii, v.35, №2 : 206-218. (in Russian).
- Bulgakova, T. I., Vasilyev, D. A., Korzhev, V. A., and Tretyak, V. L. 1995d. The results of multispecies analysis for the Barents Sea fishery community (cod, capelin, shrimp and herring). ICES CM 1995/D:14, 24 pp.
- Bulgakova, T.I., Vasilyev, D.A., Dolgov, A.V., and Frolova, Z.N. 1998. Preparation of input data for the multispecies model of commercial fish community of the Barents Sea based on the data base on predator diet. In: Aspects of theory and practice of fisheries. Behaviour of hydrobionts in the activity zone of catching gears. Moscow, VNIRO Press. P.88-96. (in Russian)
- Burgos, G., and Mehl, S. 1987. Diet overlap between North East Arctic cod and haddock in the southern part of the Barents Sea. ICES CM 1987/G:50.
- Dalpadado, P., and Bogstad, B. 2004. Diet of juvenile cod (age 0-2) in the Barents Sea in relation to food availability and cod growth. Polar biology 27:140-154.
- Dalpadado, P., Bogstad, B., Gjørseter, H., Mehl, S. and Skjoldal, H. R. 2002. Zooplankton-Fish Interactions in the Barents Sea. In: Sherman, K. and Skjoldal, H. R. (eds.). Large Marine Ecosystems of the North Atlantic. Changing States and Sustainability. Elsevier Science. 269-291.
- Dalpadado, P., Borkner, N., Bogstad, B., and Mehl, S. 2001. Distribution of *Themisto* (Amphipoda) spp. in the Barents Sea and predator-prey interactions. ICES Journal of Marine Science, 58: 876-895.
- Dolgaya, O. Yu., and Tretyak, V. L. 1992. Significance of the North-East Arctic cod for year-class strength of redfish in the Barents Sea. In : Interrelations between fish populations in the Barents Sea : proc. of the 5th PINRO-IMR Symp. (Murmansk, 12-16 August 1991) / PINRO, IMR. - Bergen : Inst. of Mar. Res., 1992. - P.39-44.
- Dolgov, A.V. 1989a. Daily ration and feeding rhythm of the Barents Sea haddock. In : Food resources and trophic relationships of the North Atlantic fishes. PINRO Press, Murmansk. P. 173-183. (in Russian).
- Dolgov, A.V. 1989b. On daily intake and feeding rhythms of the Barents Sea haddock. ICES C.M. 1989/G:15. - 14 p.
- Dolgov, A.V. 1992. Trophic groups of the Barents Sea fishes. In: Interrelations between fish populations in the Barents Sea: proc. of the 5th PINRO-IMR Symp. (Murmansk, 12-16 August 1991) PINRO, IMR. - Bergen: Inst. of Mar. Res., 1992. - P.17-23.
- Dolgov, A.V. 1994. Some aspects of biology of non-target fish species in the Barents Sea ICES C.M. 1994/O:12, 23 pp.

- Dolgov, A.V. 1995a. Some aspects of biology of non-target fishes of the Barents Sea. In : Problems of fisheries science in creation of young scientists. Proceedings of the conference of young scientists of PINRO. Murmansk, PINRO Press. P.69-94. (in Russian)
- Dolgov, A.V. 1995b. Consumption of commercial fish and invertebrates by cod in 1984-1993. In: Problems of fisheries science in creation of young scientists. Proceedings of the conference of young scientists of PINRO. Murmansk, PINRO Press. P.3-24. (in Russian)
- Dolgov, A.V. 1996. Methodical manual on the data sampling for feeding and food relationships of the Barents Sea fishes. Murmansk, PINRO Press. 16 pp. (in Russian).
- Dolgov, A.V. 1997. Distribution, abundance, biomass and feeding of thorny skate (*Raja radiata*) in the Barents Sea. ICES C.M. 1997/HH:04, 21 pp.
- Dolgov, A.V. 1999. The impact of predation on recruitment dynamics of the Barents Sea cod. In: Biology and regulation of fisheries of demersal fish in the Barents Sea and North Atlantic. Murmansk, PINRO Press. P.5-19. (in Russian)
- Dolgov, A.V. 2000. Feeding and food consumption by the Barents Sea predatory fishes in 1980–90s. ICES CM 2000/Q: 02. 17 p.
- Dolgov, A. V. 2002a. Some peculiarities of saithe feeding in the Barents Sea in 1999-2001. In the Report of the Arctic Fisheries Working Group. ICES CM 2002/ACFM:18.
- Dolgov A.V. 2002b. The role of capelin (*Mallotus villosus*) in the foodweb of the Barents Sea. – ICES Journal of Marine Science, 59: 1034-1045.
- Dolgov, A.V. 2002c. Feeding and Food Consumption by the Barents Sea Skates. NAFO SCR Doc. 02/93 Serial No. N4714 10 pp.
- Dolgov, A.V. 2003. Feeding and food consumption of the most abundant fishes of the Barents Sea in the 1990s. ICES mar. Sci. Symp., 219 : 450-453.
- Dolgov, A.V. 2005a. Feeding and Food Consumption by the Barents Sea Skates. J. Northw. Atl. Fish. Sci., 35:495-503.
- Dolgov, A. V. 2005b. Food composition and consumption by the most abundant fish species in the Barents Sea. Working document to the Arctic Fisheries Working Group Murmansk, Russia 19-28 April 2005. 17 pp.
- Dolgov, A.V., and Dolgova, N.V. 2006. The impact of predation on the state of the long rough dab stock in the Barents Sea. In: Investigations of interactions between marine species of the Barents and Norwegian Seas. Murmansk, PINRO Press. P.3-20. (in Russian)
- Dolgov, A.V., and Drevetnyak, K.V. 1990. Estimation of rations and food consumption of deep-water redfish (*Sebastes mentella*) from the Norwegian-Barents sea stock. ICES C.M. 1990/G:11. - 15 p.
- Dolgov, A.V., and Drevetnyak, K.V. 1993a. Some peculiarities of feeding and feeding interrelations of deepwater redfish (*Sebastes mentella*) in the Barents and Norwegian seas. ICES C.M. 1993/G:60. - 14 pp.
- Dolgov, A.V., and Drevetnyak, K.V. 1993b. Results of feeding investigations of deepwater redfish from the Barents and Norwegian Seas during 1968-1991. In: Materials of the Reporting Session for the results of the PINRO investigations during 1992. Murmansk, PINRO Press. P. 43-53. (in Russian)
- Dolgov A.V., and Drevetnyak, K.V. 1995. Feeding of young *Sebastes mentella* Travin in the Barents and Norwegian Seas. Precision and relevance of pre-recruit studies for fishery

management related to fish stocks in the Barents Sea and adjacent waters. Proceedings of the sixth IMR-PINRO Symposium, Bergen, 14-17 June 1994. (Ed. A. Høyen) - IMR, Norway. - P.129-134.

Dolgov, A. V., Korzhev, V. A., and Tretyak, V. L. 1995. Cannibalism and its importance for formation of recruitment of Arcto-Norwegian cod in the Barents Sea. In: Precision and relevance of pre-recruit studies for fishery management related to fish stocks in the Barents Sea and adjacent waters. Proceedings of the sixth IMR-PINRO Symposium, Bergen, 14-17 June 1994. (Ed. A. Høyen) - IMR, Norway, 1995. - P.121-128.

Dolgov, A.V., Orlova, E.L., Boitsov, V.D., and Rudneva, G.B. 2004. Feeding of cod. In : PINRO investigations in the Spitsbergen archipelago area. Murmansk, PINRO Press. P.195-211. (in Russian)

Dolgov, A.V., Orlova, E.L., Dolgova, N.V., and Zhukova, N.G. 2006. Trophic relations of the main commercial fishes in the Spitsbergen area. In : Complex investigations of the Spitsbergen nature. Apatity, Kola Science Center of the Russian Academy of Science, v.6. : 291-305. (in Russian)

Dolgov, A.V., and Yaragina, N.A. 1990. Daily feeding rhythms and food intake of the Barents Sea cod and haddock in the summer of 1989. ICES C.M. 1990/G:6, 21 pp.

Dolgov, A.V., Yaragina, N.A., Ajiad, A.M., Mehl, S. and Bogstad, B. 1992. Daily rations of cod from the Barents Sea. Pp. 83-97 in Bogstad, B. and Tjelmeland, S. (eds.): Interrelations between fish populations in the Barents Sea. Proceedings of the fifth PINRO-IMR Symposium, Murmansk, 12-16 August 1991. Institute of Marine Research, Bergen, Norway.

Dolgova, N.V., and Dolgov, A.V. 1997. Stock status and predation of long rough dab (*Hippoglossoides platessoides*) in the Barents and Norwegian seas. ICES C.M. 1997/HH:05. 16 pp.

Dommasnes, A. Christensen, V., Ellertsen, B., Kvamme, C., Melle, W., Nøttestad, L., Pedersen, T., Tjelmeland, S. and Zeller, D. 2001. Ecosystem model of the Norwegian and Barents Seas. P. 213-241. In S. Guénette, V. Christensen, D. Pauly. (eds) Fisheries impacts on North Atlantic ecosystems: models and analyses. Fisheries Centre Research Reports 9(4).

Dos Santos, J., and Jobling, M. 1992. A model to describe gastric evacuation in cod (*Gadus morhua* L.) fed natural prey. ICES J. mar. Sci. 49:145-154.

Dos Santos, J., and Jobling, M. 1995. Test of a food consumption model for the Atlantic cod. ICES J. mar. Sci. 52: 209-219.

Drobysheva, S.S., Dolgov, A.V., and Nesterova, V.N. 1991. Influence of the Lofoten-Barents Sea cod on its populational status in 80's. ICES C.M. 1991/G:21. - 11 p.

Drobysheva, S.S., and Yaragina, N.A. 1990. Importance of euphausiids in the feeding of the Barents Sea fishes. In : Food resources and trophic relations of fish in the North Atlantic. Murmansk, PINRO Press. P.184-206. (in Russian)

Falk-Petersen, J. et al. (In prep.) Ecosystem-based modelling for management of the Barents Sea benthos and related fisheries.

Filin, A.A. 1998. On possibility of modelling of food consumption by cod in the Barents Sea. Materials of the Report Session of PINRO on the results of investigations in 1996-1997. Murmansk, PINRO Press. P.61-69. (in Russian)

- Filin, A.A. 1999. Possibilities of management of cod fisheries in the Barents Sea taking into account of interspecies relationships. Biology and fisheries management of demersal fishes of the Barents Sea and North Atlantic. Murmansk, PINRO Press. P. 135-144. (in Russian)
- Filin, A.A. 2000. A model for optimisation of cod fisheries in the Barents Sea taking into account its trophic relationships with capelin. Materials of the Report Session of PINRO on the results of investigations in 1998-1999. Murmansk, PINRO Press. V.1. P. 35-44. (in Russian)
- Filin, A. A. 2002. Modelling of the impact of Northeast Arctic cod growth rate variations on their stock status in dependence on food supply and temperature conditions. ICES Coop. Res. Rep. - No.252. - P. 70-71.
- Filin, A.A. 2004a. Modelling of interspecies relationships of commercial hydrobionts in the Barents Sea to optimise management of multispecies fisheries. Voprosy rybolovstva. V. 5, №2. P.291-304. (in Russian)
- Filin, A.A. 2004b. A realisation of ecosystem approach to management of biological resources of the Barents Sea. Izvestia TINRO. Vladivostok, TINRO-Centre Press, v.137. P. 67-76. (in Russian)
- Filin, A.A. 2005a. Ecosystem approach to management of exploitation of the marine biological resources. Rybnoe khozyastvo. №6. P. 43-44. (in Russian)
- Filin A. A. 2005b. STOCOBAR model for simulation of the cod stock dynamics in the Barents Sea considering the influence of ecosystem factors. In: Ecosystem dynamics and optimal long-term harvest in the Barents Sea fisheries: proc. of the 11th Russian-Norwegian Symp. (Murmansk, 15-17 Aug. 2005). IMR, PINRO. - Murmansk : PINRO Press, 2005. - P. 236-246.
- Filin, A.A. 2006a. Multispecies models of the Barents Sea commercial hydrobionts community : principles of buildings, structure, needed information. In: Investigations of interspecies relationships of hydrobionts of the Barents and Norwegian seas. Murmansk, PINRO Press. P. 200-222 (in Russian)
- Filin, A.A. 2006.b Russian-Norwegian program of investigations on estimation of maximal long-term yield in the Barents Sea ecosystem. Rybnoe khozyastvo. №1. P. 40-41 (in Russian)
- Filin, A.A., and Gavrilik, T.N. 2001. The model CONCOD to evaluation of feeding and growth of cod in the Barents Sea. Murmansk, PINRO Press. 32 pp. (in Russian)
- Filin A. A., and Røttingen, I. 2005. Principles of the ecosystem approach to fisheries management. In :Ecosystem dynamics and optimal long-term harvest in the Barents Sea fisheries : proc. of the 11th Russian-Norwegian Symp. (Murmansk, 15-17 Aug. 2005) / IMR, PINRO. - Murmansk : PINRO Press, 2005. - P. 21-30.
- Filin, A. A., and Tjelmeland, S. 2005. Ecosystem approach to estimation of long-term yield of cod in the Barents Sea. In : Ecosystem dynamics and optimal long-term harvest in the Barents Sea fisheries : proc. of the 11th Russian-Norwegian Symp. (Murmansk, 15-17 Aug. 2005) / IMR, PINRO. - Murmansk : PINRO Press, 2005. - P. 130-137.
- Filin, A.A., Tretyak, V.L., and Dolgov, A.V. 2001. Applying of multispecies approach to management of the Barents Sea biological resources exploitation. In : Materials of the Report Session of the PINRO Scientific Council dedicated to 80th anniversary of PINRO. Murmansk, PINRO Press. P.73-84. (in Russian)

- Filin, A.A., Tretyak, V.L., and Dolgov, A.V. 2003. Multispecies approach to management of the Barents Sea biological resources exploitation. *Rybnoe khozyastvo*, №3. P.27-31. (in Russian)
- Folkow, L. P., Haug, T., Nilssen, K. T., and Nordøy, E. S. 2000. Estimated food consumption estimates of minke whale *Balaenoptera acutorostrata* in Northeast Atlantic waters in 1992-1995. *NAMMCO Sci. Publ.* 2: 65-80.
- Frøysa, K. G., Bogstad, B., and Skagen, D. W. 2002. Fleksibest – an age-length structured fish stock assessment tool with application to Northeast Arctic cod (*Gadus morhua* L.). *Fisheries Research* 55: 87-101.
- Gjørseter, H., Bogstad, B., and Tjelmeland, S. 2002. Assessment methodology for Barents Sea capelin (*Mallotus villosus* Müller). *ICES J. mar. Sci.* 59:1086-1095.
- Gjørseter, H., Bogstad, B., and Tjelmeland, S. 2007. Why did the three capelin stock collapses in the Barents Sea during the three last decades affect the ecosystem differently? 12th Norwegian- Russian symposium, Tromsø, 21-22 August 2007.
- Grinkevich, N.S. 1957. Year-to-year changes in feeding of the Barents Sea cod. *Trudy PINRO*, 10 : 88-105. (in Russian)
- Hamre, J., 2003. Capelin and herring as key species for the yield of Northeast Arctic cod. Results from multispecies model runs. *Scientia Marina*, 67: 315-323.
- Hassel, A., Skjoldal, H. R., Gjørseter, H., Loeng, H., and Omli, L. 1991. Impact of grazing from capelin (*Mallotus villosus*) on zooplankton: a case study in the northern Barents Sea in August 1985. Pp. 372-388 in Sakshaug, E., Hopkins, C.C.E. & Øritsland, N.A. (eds.): *Proceedings from the Pro Mare Symposium on Polar Marine Ecology*, Trondheim, 12-16 May 1990. *Polar Research* 10.
- Hovde, S. C., Albert, O. T., and Nilssen, E. M. 2002. Spatial, seasonal and ontogenic variation in diet of Northeast Arctic Greenland halibut (*Reinhardtius hippoglossoides*). *ICES J. mar. Sci.*, 59: 421-437.
- Howell, D., and Bogstad, B. 2007. Projecting multi-species Gadget runs for the Barents Sea into the future. Annex to BECAUSE final report. 2007. Final report of the BECAUSE (Critical Interactions BETWEEN Species and their Implications for a PreCAUTIONARY FiSheries Management in a variable Environment - a Modelling Approach) project. EU contract number: 502482.
- Huse G., and Toresen, R. 2000. Juvenile herring prey on Barents Sea capelin larvae. *Sarsia* 85:385-391.
- Hvingel, C. 2006. Towards a Quantitative assessment framework for the shrimp (*Pandalus borealis*) stock in the Barents Sea. *NAFO SCR Doc.* 06/64.
- ICES 1975. Report of the North-East Arctic Fisheries Working Group, Copenhagen 17-21 March 1975. *ICES C.M.* 1975/F:6, 23 pp.
- ICES 1990. Report from a special meeting of the Multispecies Assessment Working Group, Bergen 23-27 April 1990. *ICES C.M.* 1990/Assess:28, 16 pp.
- ICES 1996. Report of the Multispecies Assessment Working Group, Bergen 21-28 June 1995. *ICES C.M.* 1996/Assess:3, 183 pp.
- ICES 2007a. Report of the Arctic Fisheries Working Group, Vigo, Spain 19-28 April 2007. *ICES CM* 2007/ACFM: 16. 651 pp.

- ICES 2007b. Report of the Working Group on Multispecies Assessment Methods, San Sebastian, Spain, 15-19 October 2007. ICES C.M. 2007/RMC:08, xx pp.
- Idelson, M.R. 1929. On the nourishment of the food fishes in the Barents Sea. Russian Hydrobiological Journal, v.8, №10-12 : 269-285.
- Jakobsen, T., Korsbrekke, K., Mehl, S. and Nakken, O. 1997. Norwegian combined acoustic and bottom trawl surveys for demersal fish in the Barents Sea during winter. ICES CM 1997/Y: 17. 26 pp.
- Jiang, W. and Jørgensen, T. 1996. The diet of haddock (*Melanogrammus aeglefinus* L.) in the Barents Sea in the period 1984-1991. ICES J. mar. Sci. 53: 11-21.
- Johannesen, E. and Aschan, M. 2005. How much shrimp does cod really eat, five years later. NAFO SCR Doc. 05/35.
- Johannesen, E., Bogstad, B., and Gjøsæter, H. 2004. What do the cod have for dinner? HI Nytt 1-2004. (In Norwegian)
- Johannesen, E., Hvingel, C., Aschan, M. and Bogstad, B. 2007. Survey based estimation of consumption: spatial and seasonal aspects of cod predation on shrimp. NAFO SCR Doc. 07/80
- Johannesen, E., Johansen, G.O., Bogstad, B., Mehl, S., Tjelmeland, S., and Dolgov, A. 2006. Cod Consume Capelin. ICES AFWG 2006, WD 20.
- Johansen, G. O. 2002. Temporal and spatial variation in predation on juvenile herring (*Clupea harengus* L.) by Northeast Arctic cod (*Gadus morhua* L.) in the Barents Sea in 1984–1997. ICES Journal of Marine Science, 59: 270–292.
- Johansen, G.O. 2003. Size-dependent predation on juvenile herring (*Clupea harengus* L.) by Northeast Arctic cod (*Gadus morhua* L.) in the Barents Sea. Sarsia, 88: 136–153.
- Johansen, G.O., Bogstad, B., Mehl, S. and Ulltang, Ø. 2003. Consumption of juvenile herring, (*Clupea harengus* L.) by Northeast Arctic cod (*Gadus morhua* L.) in the Barents Sea: a new approach to estimating consumption in piscivorous fish. Can. J. Fish. Aquat. Sci. 61: 343-359.
- Komarova, I.V. 1939. Feeding of long rough dab *Hippoglossoides platessoides* in the Barents Sea in connection with food resources. Trudy VNIRO, 4 : 297-320 (in Russian).
- Korsbrekke, K., Mehl, S. and Høyen, A. 1991. Interactions between cod (*Gadus morhua*) and deep sea shrimp (*Pandalus borealis*) in the Barents Sea. ICES CM 1991/K:61, 12 pp.
- Korzhev, V.A., and Dolgov, A.V. 1999. Multispecies model MSVPA of the commercial species community of the Barents Sea. Murmansk, PINRO Press. 82 pp. (in Russian)
- Korzhev, V. A., and Tretyak, V. L. 1992. Effect of cannibalism of recruitment to the North-East Arctic cod stock. In : Interrelations between fish populations in the Barents Sea : proc. of the 5th PINRO-IMR Symp. (Murmansk, 12-16 August 1991). - Bergen : Inst. of Mar. res., 1992. - P.161-168.
- Korzhev, V.A., Tretyak, V.L., and Dolgov, A.V. 1995. Multispecies model of commercial community of the Barents Sea. In : Materials of Report Session on PINRO investigations in 1995. Murmansk, PINRO Press. P.28-29. (in Russian)
- Lindstrøm, U., Smout, S., Howell, D., and Bogstad, B. 2008. Modelling multispecies interactions in the Barents Sea ecosystem with special emphasis on minke whales, cod, herring and capelin. Deep Sea Research Part II: Topological Studies in Oceanography (accepted).

- Mackinson, S., Blanchard, J., Pinnegar, J., and Scott, R. 2003. Consequences of alternative functional response formulations in models exploring whale-fishery interactions. *Marine Mammal Science* 19(4) 661-681.
- Magnússon, K. G., and Aspelund, T. 1997. A model for estimating meal frequency and meal size from stomach content data with an application to Atlantic cod (*Gadus morhua*) feeding on capelin (*Mallotus villosus*). *Can. J. Fish. Aquat. Sci.* 54:876-889.
- Manteifel, B. P. 1941. Plankton and herring in the Barents Sea. *Trudy PINRO*, No. 7:125-218 (in Russian).
- Marshall, C.T., Yaragina, N.A., Ådlandsvik, B., and Dolgov, A.V., 2000. Reconstructing the stock-recruit relationship for Northeast Arctic cod using a bioenergetic index of reproductive potential. *Can. J. Fish. Aquat. Sci.*, 57: 2433-2442.
- Marshall, C.T., Yaragina N.A., Dolgov, A.V. and Ådlandsvik, B. 2002. Incorporating growth into the stock/recruit relationship for Northeast Arctic cod using a bioenergetic index of reproductive potential. *ICES Cooperative Research Report*, 2002, No 252, p.74-75.
- Mehl, S. 1986a. Stomach contents of North East Arctic cod and possible changes in the diet the last years. *ICES CM* 1986/G: 29.
- Mehl, S. 1986b. Revised and modified programs for storing, analysis and presentation of taxonomic and quantitative stomach contents data. *Rapp. Havforskningsinstituttet*, BN 8601: 62 pp.
- Mehl, S. 1989. The North East Arctic cod stocks consumption of commercially exploited prey species in 1984-1986. *Rapp. P-v. Reun. Cons. int. Explor. Mer*, 188: 185-205.
- Mehl, S. 1991. The Northeast Arctic cod stock's place in the Barents Sea ecosystem in the 1980s. Pp. 525-534 in Sakshaug, E., Hopkins, C.E.E. & Øritsland, N.A. (eds.): *Proceedings from the Pro Mare Symposium on Polar Marine Ecology*, Trondheim, 12-16 May 1990. *Polar Research* 10.
- Mehl, S. 2005. Stomach analyses of Northeast arctic saithe sampled during the saithe survey Varanger-Møre, 1998-2003. WD7, *ICES Arctic Fisheries Working Group*, Murmansk 19-28 April 2005.
- Mehl, S., Røttingen, I., and Sandberg, P. 2006a. Harvesting strategies for North East Arctic Saithe. Should we consider saithe consumption of herring? *Fiskeridirektoratet og Havforskningsinstituttet*. Februar 2006. 79 pp. (In Norwegian)
- Mehl, S., Røttingen, I., and Sandberg, P. 2006b. Harvest control rule for Northeast Arctic saithe – should predation on herring be taken into account. *Poster, ICES Symposium on Fisheries Management Strategies*, Galway, Ireland 27 – 30 June 2006.
- Mehl, S., and Sunnanå, K. 1991. Changes in growth of Northeast Arctic cod in relation to food consumption in 1984-1988. *ICES mar. Sci. Symp.*, 193: 109-112.
- Mehl, S., and Yaragina, N.A. 1992. Methods and results in the joint PINRO-IMR stomach sampling program. Pp. 5-16 in Bogstad, B. and Tjelmeland, S. (eds.): *Interrelations between fish populations in the Barents Sea. Proceedings of the fifth PINRO-IMR Symposium*, Murmansk, 12-16 August 1991. *Institute of Marine Research*, Bergen, Norway.
- Michalsen, K. 1993. Diurnal variation in trawl catches of cod (*Gadus morhua* L.) caused by vertical migration and feeding. *Master thesis, Department of Fisheries and Marine Biology, University of Bergen*. (In Norwegian).

- Michalsen, K., Johannesen, E., and Bogstad, B. 2008. Feeding of mature cod (*Gadus morhua* L.) at the spawning grounds in Lofoten. ICES J. mar. Sci. (in press).
- Michalsen, K., and Nedreaas, K.H. 1998. Food and feeding of Greenland halibut (*Reinhardtius hippoglossoides*, Walbaum) in the Barents Sea and East-Greenland waters. Sarsia 83: 401-407.
- Mjanger, H., Hestenes, K., Olsen, E., Svendsen, B.V. and Wenneck, T.D.L. 2006. Manual for sampling of fish and crustaceans. Institute of Marine Research, Quality system, December 2006.
- Nilssen, K.T., Pedersen, O-P., Folkow, L. P., and Haug, T. 2000. Food consumption estimates of Barents Sea harp seals. NAMMCO Sci. Publ. 2:9-27.
- Orlova, E.L. 1991. Methods of the daily rations calculations of predatory fishes and approach of its using (example of the Barents Sea cod). Apatity. 36 pp. (in Russian)
- Orlova, E.L. 1996. Problem "predator-prey". Rybnoe khozyastvo, №2 : 29-30. (in Russian)
- Orlova, E.L., and Antonov, S.G. 1991. Comparative analysis of method approaches and results of long-term investigations of the Barents Sea cod feeding intensity. In : Production-destruction processes of the Barents Sea coastal pelagial. Apatity, Russian Academy of Science Press. P.90-99. (in Russian)
- Orlova, E.L., Antonov, S.G., and Yaragina, N.A. 1990a. Growth and maturity of cod related to its feeding character. Rybnoe khozyastvo, №10 : 20-22. (in Russian)
- Orlova, E.L., Berestovsky, E.G., Antonov, S.G., Karamushko, L.I., Nizovtsev, G.P., and Yaragina, N.A. 1988. Dynamics of yearly feeding of cod. Apatity. 16 pp. (in Russian)
- Orlova, E.L., Berestovsky, E.G., Antonov, S.G., Karamushko, L.I., Nizovtsev, G.P., and Yaragina, N.A. 1989a. Main trophic relations of fishes of polar seas. In : Life and environment of polar seas. Leningrad, Nauka Publishing. P.192-198. (in Russian)
- Orlova, E.L., Berestovsky, E.G., Antonov, S.G., and Yaragina, N.A. 1990b. Some peculiarities of the feeding of the Barents Sea cod in 80s. Voprosy ikhthyologii, 30 (4): 634-643. (in Russian)
- Orlova, E.L., Berestovsky, E.G., Popova, O.A., and Yaragina, N.A. 1989b. Seasonal dynamics of feeding intensity of cod in the Barents Sea. In: Daily rhythms and feeding rations of commercial fishes. Moscow, VNIRO Press. P. 4-25. (in Russian)
- Orlova, E.L., Boitsov, V.D., Antsiferov, M.Yu., and Nesterova, V.N. 2001a. Formation of food supply of capelin in the central Barents Sea during normal and warm years. In : Problems in investigations and rational using of marine natural resources. Astrakhan, KaspNIRKH Press. P.158-171. (in Russian)
- Orlova, E.L., Boitsov, V.D., Dolgov, A.V., Rudneva, G.B. and Nesterova, V.N. 2005a. The relationship between plankton, capelin and cod under different temperature conditions. ICES J. mar. Sci. , 62: 1281-1292.
- Orlova, E. L., Boitsov, V. D., Nesterova, V. N., and Ushakov, N. G. 2002a. Composition and distribution of copepods, a major prey of capelin in the central Barents Sea, in moderate and warm years. ICES J. Mar. Sci., 59: 1053-1061
- Orlova, E. L., Boitsov, V. D., Nesterova, V. N., and Ushakov, N. G. 2002b. Composition and distribution of copepod plankton as a major component of food supply of capelin during normal and warm years. Voprosy rybolovstva, v. 3, №1 : 36-52. (in Russian)



- Orlova, E.L., Boitsov, V.D., Nesterova, V.N., Ushakov, N.G., and Antsiferov, M.Yu. 2002c. Peculiarities of capelin feeding in the Bear Island-Spitsbergen area during 1980-1990s. In : Complex investigations of Spitsbergen nature. (Eds. G.G.Matishov and G.A.Tarasov). Vol.2 Apatity : Publ. KSC RAS. P.175-182. (in Russian)
- Orlova, E.L., Boitsov, V.D., Rudneva, G.B., Dolgov, A.V., Ushakov, N.G., Konstantinova, L.L., and Zhukova, N.G. 2006a. Perennial dynamics of capelin feeding in the Barents Sea and the state of its population. *Rybnoe khozyaystvo*, 1: 85-87 (in Russian)
- Orlova, E. L., Boitsov, V. D. Rudneva, G. B., Nesterova, V. N., Konstantinova, L. L., and Ushakov, N. G. 2006b. Feeding conditions, fatness and a rate of maturation of capelin in the central latitudinal zone of the Barents Sea in 2001-2003. In: Investigations of interspecies relationships between marine organisms of the Barents and Norwegian Seas. Selected papers. PINRO. Murmansk. P. 71-98 (in Russian).
- Orlova, E. L., Boitsov, V. D., Rudneva, G. B., Ushakov, N.G., and Konstantinova, L.L. 2005b. The influence of the environmental factors and a nutritive base on the distribution and biological status of the Barents Sea capelin. Pp. 307-321 in Shibanov, V. (ed.): Ecosystem dynamics and optimal long-term harvest in the Barents Sea Fisheries. Proceedings of the 11<sup>th</sup> PINRO-IMR Symposium, Murmansk, 15-17 August 2005. PINRO Press, Murmansk.
- Orlova, E. L., Boitsov, V. D., and Ushakov, N. G. 2004. Conditions of summer feeding and growth of the Barents Sea capelin. Murmansk, PINRO Press. 198 pp. (in Russian)
- Orlova, E.L., and Dolgov, A.V. 2004. Year-to year aspects of cod feeding strategy under non-stable food supply. *Izvestia TINRO*, v.137: 85-100. (in Russian)
- Orlova, E.L., Dolgov, A.V., Alexandrov, D.I., and Zhukova, N.G. 2005c. The cod feeding conditions in the Bear Island and Spitsbergen area under low capelin abundance. In: Complex investigations of Spitsbergen nature. (Eds. G.G.Matishov and G.A.Tarasov). Vol.5 Apatity : Publ. KSC RAS. P.447-461. (in Russian)
- Orlova, E.L., Dolgov, A.V., Belikov, S., and Johannesen, E. 2005d. Year-to-year dynamics in trophic links in of the main commercial fishes in the Barents Sea as indicating the state of the ecosystem. Pp. 42-76 in Shibanov, V. (ed.): Ecosystem dynamics and optimal long-term harvest in the Barents Sea Fisheries. Proceedings of the 11<sup>th</sup> PINRO-IMR Symposium, Murmansk, 15-17 August 2005. PINRO Press, Murmansk.
- Orlova, E.L., Dolgov, A.V., Boitsov, V.D., Konstantinova, L.L., and Antsiferov, M.Yu. 2003. Peculiarities of cod feeding in the north-western fisheries areas since mid-80th to 2000. *Voprosy rybolovstva*, v. 4, №3 (15) : 451-489. (in Russian)
- Orlova, E.L., Dolgov, A.V., Boitsov, V.D., Ushakov, N.G. and Rudneva, G.B. 2006c. Long-term variations in the relationships between the main components of the Barents Sea ecosystem (cod and capelin) and ecological and physiological aspects of their interactions. *ICES CM 2006/O:03*, 24 pp.
- Orlova, E.L., Dolgov, A.V., Nesterova, V.N., and Antsiferov, M.Yu. 2000a. Food supply and feeding types of Arcto-Norwegian cod. In : Materials of the Report Session of PINRO on the results of investigations in 1998-1999. Murmansk, PINRO Press. V.1. P.23-34. (in Russian)
- Orlova, E.L., Dolgov, A.V., Nesterova, V.N., and Antsiferov, M.Yu. 2002d. Distribution and feeding conditions of cod in the Bear Island-Spitsbergen area. In: Complex investigations of nature of Spitsbergen. V.2. Apatity, Kola Science Centre of Russian Academy of Science. P.183-186. (in Russian)

Orlova, E.L., Dolgov, A.V., Nesterova, V.N., Antsiferov, M.Yu., and Konstantinova, L.L. 2000b. Peculiarities of feeding behaviour in Arcto-Norwegian cod in the southern Barents Sea when major food objects are in deficiency. ICES CM 2000/M:31, 18 pp.

Orlova, E.L., Dolgov, A.V., Pakhomova, N.A., and Tereshtchuk, O.Yu. 1994a. Distribution of cod and haddock concentrations and its relations to food resources. In: Regularities of formation of fisheries resources in the coastal Barents Sea and recommendations on its using. Apatity. P. 34-42. (in Russian)

Orlova, E.L., Dolgov, A.V., Rudneva, G.B. and Nesterova, V.N. 2005e. The effect of abiotic and biotic factors on the importance of macroplankton in the diet of Northeast Arctic cod in recent years. ICES J. mar. Sci. 62: 1463-1474.

Orlova E. L., Dolgov, A. V., and Seliverstova, E. I. 1995a. Character of cod effect on population of herring in the Barents Sea. In : Precision and relevance of pre-recruit studies for fishery management related to fish stocks in the Barents Sea and adjacent waters / Proceedings of the sixth IMR-PINRO Symposium, Bergen, 14-17 June 1994.(Ed. A.Hylen) - IMR, Norway, 1995. - P.85-106.

Orlova, E.L., Dolgov, A.V., and Tereshtchuk, O.Yu. 1995b. Quantitative aspects of cod feeding in the Barents Sea. In: Hydrobiological investigations in the fisheries areas of seas and oceans. Moscow, VNIRO Press. P.46-74.

Orlova, E.L., Drobysheva, S.S., Dolgov, A.V., and Nesterova, V.N. 1998. Feeding conditions and fatness of cod under the lowest capelin stock level (1995-1996). Materials of the PINRO Reporting Session on the investigations during 1996-1997. Murmansk, PINRO Press. P.50-60. (in Russian)

Orlova, E.L., and Matishov, G.G. 1993. Structural and functional role of cod in the Barents Sea ecosystem. Apatity, Russian Ac. Sci. Publishers, 166 pp. (in Russian).

Orlova E.L., Nesterova V.N., and Dolgov, A.V. 2001b. Euphausiids and their role in the feeding of the Arcto-Norwegian cod (80-90<sup>th</sup>). Voprosy rybolovstva, v.2., № 1(15) : 86-103. (in Russian).

Orlova, E. L., Oganin, I. A., Boitsov, V. D., Nesterova, V. N., Konstantinova, L. L. and Ushakov, N. G. 2005f. Influence of polar cod on the efficiency of capelin feeding in the central part of the Barents Sea. Rybnoe khozyaistvo, No. 2: 52-55 (in Russian).

Orlova, E.L., Oganin, I.A., Dolgov, A.V., Boitsov, V.D., and Nesterova, V.N. 2006d. Trophic relationships between capelin, polar cod and cod during their feeding in the Barents Sea. In : Investigations of interactions between marine species of the Barents and Norwegian Seas. Murmansk, PINRO Press. P.99-129. (in Russian)

Orlova, E. L., Oganin, I. A., and Tereshchenko, E. S. 2001c. On the reasons of the changes in the polar cod role in the feeding of the Northeastern arctic cod. Rybnoe khozyajstvo, 2001, No.1, pp.30-33. (in Russian).

Orlova, E.L., Petrov, A.A., Popova, O.A., and Yaragina, N.A. 1989c. On feeding intensity of the Barents Sea cod under experimental conditions. In : Daily rhythms and feeding rations of commercial fishes of the World Ocean. Moscow, VNIRO Press. P. 42-63. (in Russian)

Orlova, E. L., Rudneva, G. B., Dolgov, A. V., Ushakov, N. G., Konstantinova, L. L. and Zhukova, N.G. 2006e. Long-term dynamics of capelin feeding in the Barents Sea and decisive factors. ICES CM 2006/F:04, 17 pp.

- Orlova, E.L., Seliverstova, E.I., Dolgov, A.V., and Nesterova, V.N. 1996. Role of Atlantic Scandian herring in formation of food supply of cod during 80-90s. In: Atlantic cod : biology, ecology, fisheries. (Ed. G.G. Matishov and A.V. Rodin). Sankt-Petersburg, Nauka Publishing. P.107-132. (in Russian)
- Orlova, E.L., Seliverstova, E.I., Dolgov, A.V., and Nesterova, V.N. 2001d. Herring abundance, food supply and distribution in the Barents Sea and their availability for cod. Pp.91-99. In : F.Funk, J.Blackburn, D.Hay, A.J.Paul, R.Stephenson, R.Toresen, and D.Witherel (eds.), Herring : Expectations for a new millennium. University of Alaska Sea Grant, AK-SG-01-04, Fairbanks.
- Orlova, E.L., Seliverstova, E.I., Dolgov, A.V., Prokhorova, T.A., and Sklyar, V.V. 2006f. Distribution and feeding of the Atlantic herring and its consumption by cod in the Barents Sea in 1984-2002. In: Investigations of interactions between marine species of the Barents and Norwegian Seas. Murmansk, PINRO Press. P.130-154 (in Russian).
- Orlova, E. L., Seliverstova, E. I., and Nesterova, V. N. 2000c. Some features of distribution and feeding of Atlantic herring (*Clupea harengus* L.) in the Barents Sea. ICES CM 2000/M:32, 17 pp.
- Orlova, E.L., Tereshtchuk, O.Yu., and Dolgov, A.V. 1994b. Age-dependent and seasonal peculiarities of cod feeding. In : Regularities of formation of fisheries resources in the coastal Barents Sea and recommendations on its using. Apatity. P. 118-129. (in Russian).
- Orlova, E.L., Tereshtchuk, O.Yu., and Dolgov A.V. 1995c. Feeding of different size groups of cod in the Barents Sea. In : Hydrobiological investigations in the fisheries areas of seas and oceans. Moscow, VNIRO Press. P.74-92. (in Russian)
- Orlova, E. L., Ushakov, N. G., Nesterova, V. N., and Boitsov, V. D. 2002e. Food supply and feeding of capelin (*Mallotus villosus*) of different size in the central latitudinal zone of the Barents Sea during intermediate and warm years. ICES J. Mar. Sci., 59 : 968-975.
- Øvstetun, G. 2006. Predator-prey relationship between cod (*Gadus morhua*) and redfish (*Sebastes* spp.) in the Barents Sea 1984-2005. Master thesis, University of Bergen.
- Ozhigin, V.K., Drobysheva, S. S., Ushakov, N. G., Yaragina, N.A., Tereshchenko, V.V., Titov, O.V., Nesterova, V.N., and Karsakov, A.L. 2001. Environment, plankton, capelin and cod in the Barents Sea in the 90's. ICES Symp. Hydrobiological variability in the ICES area, 1990-1999 . (Edinburgh, 8-12 August 2001), p.43.
- Ozhigin, V.K., Drobysheva, S.S., Ushakov, N.G., Yaragina, N.A., Titov, O.V., and Karsakov, A.L. 2003. Interannual variability in the physical environment, zooplankton, capelin (*Mallotus villosus*) and North-East Arctic cod (*Gadus morhua*) in the Barents Sea. ICES Marine Science Symposia, 219:283-293.
- Ozhigin, V.K., Tretyak, V.L., and Ivshin, V.A. 1996. Growth of Arcto-Norwegian cod. Murmansk, PINRO Press. 60 pp. (in Russian)
- Ozhigin, V.K., Tretyak, V.L., Yaragina, N.A., and Ivshin, V.A. 1994. Dependence of the Barents Sea cod growth upon conditions of their feeding on capelin and water temperature. ICES C.M. 1994/G:32, Demersal Fish Committee, 12 p.
- Ozhigin, V.K., Tretyak, V.L., Yaragina, N.A., and Ivshin, V.A. 1995. Growth of Arcto-Norwegian cod *Gadus morhua morhua* depend to condition of prey on capelin *Mallotus villosus villosus* and water temperature. Voprosy ikhthyologii, 35 (3) : 335-342. (in Russian)

- Panasenko, L.D. 1989. Daily changes in feeding and rations of the Barents Sea capelin during summer-autumn season. In: Daily rhythms and food rations of commercial fishes of the World Ocean. Moscow, VNIRO Press. P.63-75 (in Russian)
- Pechenik, L.N., Ponomarenko, V.P. and Shepel, L.I. 1973. Biology and fisheries of polar cod. Moscow, Pistchevaya promyshlennost. 67 pp. (in Russian)
- Pinnegar, J., Blanchard, J., Mackinson, S., Scott, R., and Duplisea, D. 2005. Affects of aggregation and removing weak links in food web models on predictions of system stability and resilience. Ecological modelling 184:229-248.
- Plagányi, É. E. 2007. Models for an ecosystem approach to fisheries. FAO Fisheries Technical Paper. No. 477. Rome, FAO. 108 pp.
- Ponomarenko, I. Ya. 1958. Feeding of juvenile cod in the southern Barents Sea during winter 1956/57. Scientific-technical bulletin of PINRO, №3 (7) : 28-32. (in Russian).
- Ponomarenko, I. Ya. 1973. The effects of food and temperature conditions on the survival of young bottom-dwelling cod in the Barents Sea. Rapp. P.-v. Reun. Cons. int.Explor.Mer.. - Vol.164:199-207.
- Ponomarenko, I.Ya. 1983. Long-term dynamics of bottom-dwelling young cod survival connected with feeding and temperature conditions.ICES C.M. 1983b/L:9. 17 pp.
- Ponomarenko, I. Ya. 1984. Survival of bottom-dwelling young cod in the Barents Sea and its determining factors. In: Proceedings of the Soviet-Norwegian symposium "Reproduction and Recruitment of Arctic cod" (Eds. O.R.Godø, S. Tilseth), IMR, Bergen, p.213-229.
- Ponomarenko, V.P, Ponomarenko, I.Ya., and Yaragina, N.A. 1978. Consumption of the Barents Sea capelin by cod and haddock in 1974-1976. Trudy PINRO, 41 : 53-66. (in Russian).
- Ponomarenko, I.Ya., and Yaragina N.A. 1985. Seasonal and year-to-year dynamics of frequency of occurrence of capelin (*Mallotus villosus villosus*) in the feeding of the Barents Sea cod. In : Feeding and food supply of fishes on early ontogenetic stages as a factor of formation of its abundance, growth and concentrations. Moscow, VNIRO Press. P.3-19. (in Russian).
- Ponomarenko, I. Ya., and Yaragina, N.A. 1990a. On interspecies relations of cod (*Gadus morhua morhua* L.) and shrimp (*Pandalus borealis* Krøyer) in the Barents Sea. In : Biological resources of shelf and edge seas. Moscow, Nauka Publishing. P.206-215. (in Russian)
- Ponomarenko I. Ya., and Yaragina, N.A. 1990b. Year-to-year dynamics of the Barents Sea cod on capelin, euphausiids and shrimp and yearly consumption of these prey. In : Food resources and trophic relations of fish in the North Atlantic. Murmansk, PINRO Press. P.109-130. (in Russian).
- Ponomarenko, I.Ya., and Yaragina, N.A. 1996. Feeding and food relations. Cod in the ecosystem of the Barents Sea. In The Barents Sea cod (biological and fisheries outline), pp. 56-104. Boitsov, V.D., Lebed, N.I., Ponomarenko, V.P., Tereshchenko, V.V., Tretyak, V.L., Shevelev, M.S., and Yaragina, N.A. PINRO Press, Murmansk. (in Russian).
- Ponomarenko, I. Ya., and Yaragina, N.A. 2003. Feeding and trophic relations. Cod in the Barents Sea ecosystem. In: The Barents Sea cod: biology and fisheries (2nd edition). Murmansk, PINRO Press. P.62-113. (in Russian)
- Prokhorov, V.S. 1965. Ecology of the Barents Sea capelin and perspectives of its fisheries. Trudy PINRO, v.19. 68 pp. (in Russian).

- Schweder, T., Hagen, G.S., and Hatlebakk, E., 1998. On the effect on cod and herring fisheries of retuning the Revised Management Procedure for minke whaling in the Greater Barents Sea. *Fisheries Research*, 37: 77-95.
- Schweder, T., Hagen, G.S., and Hatlebakk, E., 2000. Direct and indirect effects of minke whale abundance on cod and herring fisheries: A scenario experiment for the Barents Sea. *NAMMCO Scientific Publications*, 2: 120-133.
- Shvagzhdis, A.P. 1990. Feeding peculiarities of Greenland halibut from the Norwegian Barents Sea stock in 1980-1989. *ICES C.M. 1990/G:12*. 19 pp.
- Simacheva, I.N., and Glukhov, A.A. 1990. Feeding of long rough dab in the Barents Sea. In *Food resources and trophic relations of fishes in the North Atlantic*, pp. 160-166. Ed. by T.S.Rass, and S.S.Drobysheva. PINRO Press, Murmansk. (in Russian).
- Skaret, G., and Pitcher, T.J. 2007. An ecosystem model of the Norwegian Sea and Barents Sea fitted to data. *Fisheries Centre Research Reports*, Fisheries Centre, UBC, Vancouver, Canada: In press.
- Sonina, M.A. 1969. Migrations of the Barents Sea haddock and determining its factors. *Trudy PINRO*, v.26. 126 pp. (in Russian)
- Sysoeva, T.K. 1958. Feeding of the Barents Sea cod in 1957. *Scientific-technical bulletin of PINRO*, №3 (7) : 17-22. (in Russian).
- Tarverdieva, M.I., Panasenko, L.D., and Nesterova, V.N. 1996. Feeding of polar cod in the Barents Sea. In : *Hydrobiological investigations in the fisheries areas of seas and oceans*. Moscow, VNIRO Press. P.98-109.
- Tarverdieva, M.I., and Yaragina, N.A. 1989. Daily feeding rhythm and rations of the Barents Sea cod during feeding on various prey in the summer period. In: *Daily rhythms and feeding rations of commercial fishes*. Moscow, VNIRO Press. P. 25-42. (in Russian).
- Tarverdieva, M.I., and Yaragina, N.A. 1995. Dynamics of daily rations of the Barents Sea cod related to season, local area and prey composition. In: *Hydrobiological investigation in fisheries areas of seas and oceans*. Moscow, VNIRO Press. P.93-98. (in Russian)
- Tjelmeland, S. 1997. Can Management of Barents Sea capelin Be Improved by Multispecies Modelling? *Forage Fishes in Marine Ecosystems*. Proceedings of the International Symposium on the Role of Forage Fishes in Marine Ecosystems. Alaska Sea Grant College Program Report No. 97-01: 617-632. University of Alaska Fairbanks.
- Tjelmeland, S. 2005. Evaluation of long-term optimal exploitation of cod and capelin in the Barents Sea using the Bifrost model. In Shibanov, V. (ed.): *Proceedings of the 11th Joint Russian-Norwegian Symposium: Ecosystem dynamics and optimal long-term harvest in the Barents Sea fisheries*. Murmansk, Russia 15-17 August 2005. *IMR/PINRO Report series 2/2005*, p. 113-130.
- Tjelmeland, S., and Alvarez, J. 1994. Estimating initial stomach content using stochastic simulation. *ICES C.M. 1994/G:16*.
- Tjelmeland, S., and Bogstad, B. 1993. The Barents Sea capelin stock collapse: A lesson to learn. In S. J. Smith, J. J. Hunt and D. Rivard (ed.). *Risk Evaluation and Biological Reference Points for Fisheries Management*. *Can. Spec. Publ. Fish. Aq. Sci.* 120: 127-139.
- Tjelmeland, S., and Bogstad, B. 1998. MULTSPEC – A review of a multispecies modelling project for the Barents Sea. *Fisheries Research* 37: 127-142.

- Tjelmeland, S., and Lindstrøm, U., 2005. An ecosystem element added to the assessment of Norwegian spring spawning herring: implementing predation by minke whales. *ICES Journal of Marine Science*, 62: 285-294.
- Tretyak, V. L. 2000. Modelling of age-dependent instantaneous coefficients of natural mortality for Northeast Arctic cod. *ICES CM 2000/ V:09*. - 23 p.
- Tretyak, V.L., Korzhev, V.A., and Dolgov, A.V. 1999. The experience of applying MSVPA method to simulate fishing community in the Barents Sea. In : *Biology and regulation of fisheries of demersal fish in the Barents Sea and North Atlantic*. Murmansk, PINRO Press. P.119-134. (in Russian).
- Tretyak, V.L., Korzhev, V.A., and Yaragina, N.A. 1990. Methodical recommendations on investigations of trophic relations of fishes for mathematic modelling of the Barents Sea ecosystem. Murmansk, PINRO Press. 80 pp. (in Russian)
- Tretyak, V.L., Korzhev, V.A., and Yaragina, N.A. 1991. Trophic relations of the Barents Sea cod and their dynamics. *ICES C.M. 1991/G:22*. 28 p.
- Tseeb, R.Ya. 1964. Feeding and food adaptations of haddock. Ed. by Yu. I. Galkin. Nauka Publishers, Moscow, St. Petersburg. 134 p. (in Russian).
- Ushakov, N. G., Korzhev, V. A., and Tretyak V. L. 1992. North-East Arctic cod importance in capelin stock dynamics. Interrelations between fish populations in the Barents Sea : proc. of the 5th PINRO-IMR Symp. (Murmansk, 12-16 August 1991). - Bergen : Inst. of Mar. res., 1992. - P.99-110.
- Ushakov, N.G., Prozorkevich, D.V., Tereshchenko, E.S., Orlova, E.L., Rudneva, G.B., and Nesterova, V.N. 2004. Capelin. In : *PINRO investigations in the Spitsbergen archipelago area*. Murmansk, PINRO Press. P.139-155. (in Russian)
- Vollen, T., Albert, O. T., and Nilssen, E. M. 2004. Diet composition and feeding behaviour of juvenile Greenland halibut (*Reinhardtius hippoglossoides*) in the Svalbard area. *J. Sea. Res.*, 51: 251-259.
- Westgård, T. 1982. Programs for handling and analysis of stomach contents data. *ICES CM 1982/H: 21*. 43 pp.
- Yaragina, N.A. 1988. Daily feeding rhythm of the Barents Sea cod. In: *Biology of fishes in the seas of European North*. Murmansk, PINRO Press. – P.25-34. (in Russian)
- Yaragina, N. A., Bogstad, B., and Kovalev, Yu. A. 2007. Variability in cannibalism in Northeast arctic cod (*Gadus morhua*) during the period 1947-2006. 12th Norwegian- Russian symposium, Tromsø, 21-22 August 2007.
- Yaragina, N.A., Dolgov, A.V., and Kiseleva, V.M. 2003. Energetic potential of cod and its influence on reproductive ability of population. Murmansk, PINRO Press. 82 pp. (in Russian)
- Yaragina, N.A., and Marshall, C.T. 2000. Trophic influences on interannual and seasonal variation in the liver condition index of Northeast Arctic cod (*Gadus morhua*). *ICES Journal of Marine Science*. 57(1): 42-55.
- Zatsepin, V.I. 1939. Feeding of haddock (*Melanogrammus aeglefinus* L.) in the area of the Murman Coast relative to bottom fauna. *Trudy PINRO*, 3 : 39-96 (in Russian).
- Zatsepin, V.I., and Petrova, N.S. 1939. Feeding of cod in the southern part of the Barents Sea (by observations in 1934-1938). *Proceeding of PINRO* 5, 1-170 (In Russian).

Zenkevich, L.A., and Brotskaya, V.A. 1931. Materials on the feeding of the Barents Sea fishes. Proceedings of the 1st session GOIN, №4 : 1-35. (in Russian).

Zilanov, V.K. 1984. Blue whiting in the North Atlantic. Moscow, Legkaja i pischevaja promyshlennost, 160 p. (in Russian).

## Appendix 1.

Stations with stomach samples by year and quarter 1984-2006. Blue represent Norwegian stations, red Russian stations with trawling time less than 1.5 h, and black Russian stations with trawling time more than 1.5 h.





