

Valvular Heart Disease

OPEN

Relation of Left Ventricular Mass to Prognosis in Initially Asymptomatic Mild to Moderate Aortic Valve Stenosis

Eva Gerds, MD, PhD; Anne B. Rossebø, MD, PhD; Terje R. Pedersen, MD, PhD;
Giovanni Cioffi, MD; Mai Tone Lønnebakken, MD, PhD; Dana Cramariuc, MD, PhD;
Barbara P. Rogge, MD, PhD; Richard B. Devereux, MD

Background—The prognostic importance of left ventricular (LV) mass in nonsevere asymptomatic aortic stenosis has not been documented in a large prospective study.

Methods and Results—Cox regression analysis was used to assess the impact of echocardiographic LV mass on rate of major cardiovascular events in 1656 patients (mean age, 67 years; 39.6% women) with mild-to-moderate asymptomatic aortic stenosis participating in the Simvastatin Ezetimibe in Aortic Stenosis (SEAS) study. Patients were followed during 4.3 years of randomized treatment with combined simvastatin 40 mg and ezetimibe 10 mg daily or placebo. At baseline, LV mass index was $45.9+14.9$ g/m^{2.7}, and peak aortic jet velocity was $3.09+0.54$ m/s. During follow-up, 558 major cardiovascular events occurred. In Cox regression analyses, 1 SD (15 g/m^{2.7}) higher baseline LV mass index predicted increases in hazards of 12% for major cardiovascular events, 28% for ischemic cardiovascular events, 34% for cardiovascular mortality, and 23% for combined total mortality and hospitalization for heart failure (all $P<0.01$), independent of confounders. In time-varying models, taking the progressive increase in LV mass index during follow-up into account, 1 SD higher in-study LV mass index was consistently associated with 13% to 61% higher hazard for cardiovascular events (all $P<0.01$), independent of age, sex, body mass index, valvuloarterial impedance, LV ejection fraction and concentricity, and the presence of concomitant hypertension.

Conclusions—Higher LV mass index is independently associated with increased cardiovascular morbidity and mortality during progression of aortic stenosis.

Clinical Trial Registration—URL: <http://www.clinicaltrials.gov>. Unique identifier: NCT00092677.
(*Circ Cardiovasc Imaging*. 2015;8:e003644. DOI: 10.1161/CIRCIMAGING.115.003644.)

Key Words: aortic valve stenosis ■ echocardiography ■ hypertrophy, left ventricular ■ mortality ■ prognosis

It is well known that the presence of left ventricular (LV) hypertrophy by echocardiography predicts increased cardiovascular morbidity and mortality both in general and in hypertensive populations.¹⁻³ In patients with aortic valve stenosis (AS), LV hypertrophy is mainly considered an adaptive response that keeps LV wall stress close to normal, offsetting the hemodynamic load.⁴ However, as recently demonstrated, the presence of concomitant hypertension, obesity, and metabolic syndrome significantly modulates LV mass and geometry in patients with asymptomatic AS independent of AS severity.⁵⁻⁷

Few studies in AS have focused on the prognostic impact of LV mass. In patients with severe symptomatic AS, concentric LV geometry and severe LV hypertrophy by echocardiography have been associated with increased mortality after aortic valve replacement.^{8,9} Increased cardiovascular morbidity and mortality has also been demonstrated for asymptomatic patients with severe AS and excessive LV hypertrophy.¹⁰ Recently, higher LV mass was associated with worse outcome after transcatheter aortic valve replacement for severe symptomatic AS.¹¹ However, the independent prognostic impact of LV mass by echocardiography in asymptomatic mild-to-moderate AS patients has not been reported from a large prospective study. Thus, the aim of this study was to test the

See Clinical Perspective
See Editorial by Barasch and Reichel

Received January 15, 2015; accepted September 30, 2015.

From the Department of Clinical Science, University of Bergen, Bergen, Norway (E.G., M.T.L.); Department of Cardiology (A.B.R.) and Centre for Preventive Medicine (T.R.P.), Oslo University Hospital Ullevaal, Oslo, Norway; Department of Cardiology, Villa Bianca Hospital, Trento, Italy (G.C.); Department of Heart Disease, Haukeland University Hospital, Bergen, Norway (D.C., B.P.R.); and Department of Medicine, Weill Cornell Medical College, New York, NY (R.B.D.).

Correspondence to Eva Gerds, MD, PhD, Department of Clinical Science, University of Bergen, PO Box 7804, N-5020 Bergen, Norway. E-mail eva.gerds@k2.uib.no

© 2015 The Authors. *Circulation: Cardiovascular Imaging* is published on behalf of the American Heart Association, Inc., by Wolters Kluwer. This is an open access article under the terms of the [Creative Commons Attribution Non-Commercial-NoDerivs](http://creativecommons.org/licenses/by-nc-nd/4.0/) License, which permits use, distribution, and reproduction in any medium, provided that the original work is properly cited, the use is noncommercial, and no modifications or adaptations are made.

Circ Cardiovasc Imaging is available at <http://circimaging.ahajournals.org>

DOI: 10.1161/CIRCIMAGING.115.003644

hypothesis that higher LV mass is independently associated with higher rate of cardiovascular events in these patients.

Methods

Patient Population

The present analysis was prespecified within the Simvastatin Ezetimibe in Aortic Stenosis (SEAS) study analysis plan. Study design, baseline characteristics, and main outcome results of the SEAS study have previously been published.^{12,13} In short, 1873 men and women aged 45 to 85 years with asymptomatic mild-to-moderate AS having a peak aortic jet velocity between 2.5 and 4.0 m/s by echocardiography were randomized to placebo or to combination treatment with simvastatin 40 mg and ezetimibe 10 mg daily. Patients with known coronary heart disease, heart failure, diabetes mellitus, history of stroke or peripheral vascular disease, clinically significant mitral valve disease, severe or predominant aortic regurgitation, rheumatic valvular disease, aortic valve prosthesis, or renal insufficiency and patients already on lipid-lowering therapy or with a guideline indication for lipid-lowering therapy were not included in the SEAS study. Core laboratory readings of peak aortic jet velocity and LV mass were available from baseline and at least 1 follow-up echocardiogram in 1656 patients (88% of the study population), who comprise the present study population. Hypertension was defined as history of hypertension, use of antihypertensive drug treatment, or elevated blood pressure at the baseline clinic visits. All patients gave written informed consent, and the study was approved by ethics committees in all participating countries.

Echocardiography

Echocardiograms were performed at baseline, annually and before planned aortic valve surgery following a standardized protocol at 173 study centers in 7 European countries. Echocardiographic images were stored on videotapes, compact discs, or magnetic optical discs and forwarded for blinded interpretation at the SEAS echocardiography core laboratory at Haukeland University Hospital, Bergen, Norway, as previously published.^{5,12,14} Severity of AS and LV structure and function were measured following current guidelines.^{15,16} LV mass was measured by an autopsy-validated method and indexed to body height in the allometric power of 2.7.¹⁷ LV hypertrophy was defined using the prognostically validated cutoff values LV mass index >46.7 g/m^{2.7} in women and >49.2 g/m^{2.7} in men.³ Relative wall thickness was assessed from $2 \times$ LV posterior wall thickness/LV end-diastolic diameter ratio and considered increased if >0.43 (concentric LV geometry).¹⁵ Valvuloarterial impedance was calculated using a previously validated method.¹⁸ Pressure recovery was assessed at the aortic sinotubular junction and used for calculation of energy loss index as prognostically validated.^{19,20}

End Points

The prespecified primary end point of SEAS was major cardiovascular events, a composite end point, including aortic valve-related events (combined aortic valve replacement, hospitalization for heart failure because of aortic stenosis, and death from cardiovascular causes) and ischemic cardiovascular events (combined death from cardiovascular causes, nonfatal myocardial infarction, hospitalization for unstable angina, coronary revascularization, and nonhemorrhagic stroke).¹² The secondary end points were aortic valve events and ischemic cardiovascular events analyzed separately. Total mortality was a tertiary end point. All end points were classified by an independent end point classification committee whose members were unaware of study group assignments.¹³ We also assessed the post hoc defined composite end point of total mortality and hospitalization for heart failure because of aortic stenosis.

Statistical Analysis

Statistical analysis was performed using IBM SPSS version 22.0 (IBM Corporation, Armonk, NY). Values are given as mean \pm SD

for continuous variables and as percentages for categorical variables. Comparison between groups was performed by paired and unpaired *t* test, χ^2 test, and general linear model with post hoc test and Bonferroni adjustment as appropriate. Cumulative incidences of cardiovascular events during follow-up were estimated by Kaplan–Meier. Kaplan–Meier plots were used to compare event-free survival in groups of patients with and without LV hypertrophy at baseline. Correlates of the prespecified primary and secondary composite end points were identified by Cox regression analysis in univariable and multivariable models and presented as hazard ratio and 95% confidence intervals. In the primary analyses, LV mass index was used as the continuous variable. In secondary models, LV hypertrophy as a dichotomous variable was used. Age, sex, body mass index, peak aortic jet velocity, LV ejection fraction, concentric LV geometry, hypertension, and valvuloarterial impedance were included as covariates in all multivariable models. Aortic valve replacement was included as a time-varying covariate in models assessing cardiovascular death and total mortality. In subsequent models, concentric LV geometry was replaced by stress-corrected midwall shortening, and the presence of aortic regurgitation was added. To take the progressive increase in LV mass during progression of AS into account, time-varying Cox regression analysis was used. Two-tailed $P < 0.05$ was regarded as statistically significant both in univariable and multivariable analyses.

Results

Compared with patients with normal LV mass index at baseline, the group with LV hypertrophy was older, had higher body mass index, lower LV midwall function, and included more patients with hypertension (all $P < 0.01$; Tables 1 and 2). During a median of 4.3-year follow-up, LV mass indexed to height^{2.7} (LV mass index) and concentricity increased, whereas LV endocardial and myocardial function declined (all $P < 0.001$). The prevalence of LV hypertrophy increased from 36% at baseline to 60% at the last study visit ($P < 0.01$). The annual AS progression rate did not differ between groups of patients with and without LV hypertrophy at baseline, whether calculated based on change in peak aortic jet velocity (0.21 ± 0.39 versus 0.20 ± 0.27 m/s per year), mean gradient (4 ± 7 versus 4 ± 5 mm Hg/y), or aortic valve area (-0.03 ± 0.25 versus -0.03 ± 0.29 cm²/y, all $P > 0.3$). The average time between the baseline and the last follow-up study was 3.6 ± 1.2 years. The average time between the follow-up study and an aortic valve event, an ischemic cardiovascular event, and death from any cause was on average 0.59 ± 0.03 , 0.94 ± 0.06 , and 0.80 ± 0.55 years, respectively.

During follow-up, each SD higher unindexed LV mass, LV mass/height^{2.7}, and LV mass/body surface area was associated with comparable 21%, 23%, and 25% higher rates of the primary study end point, respectively, in univariable analyses (all $P < 0.001$). The rates of aortic valve events, ischemic cardiovascular events, cardiovascular death, and combined death from any cause and hospitalization for heart failure because of progression of AS all increased progressively with increasing quartile of baseline LV mass index and were 1.5, 1.8, 3.2, and 2.5 times higher in the upper LV mass index quartile than in the lowest quartile (Figure 1). In multivariable Cox regression, higher LV mass index was associated with higher rates of aortic valve events, ischemic cardiovascular events, cardiovascular death, and combined death from any cause and hospitalization for heart failure when adjusted for known prognosticators in AS patients like age, sex, body mass index, AS severity, LV ejection fraction,

Table 1. Clinical Patient Characteristics in the Total Population and in Patients With or Without LV Hypertrophy at Baseline

Variable	Total Population, n=1616	LV Hypertrophy, n=592	No LV Hypertrophy, n=1064
Age, y	67.4±9.6	68.2±9.2*	66.9±9.8
Women, %	39.4	38.3	40.0
Systolic blood pressure, mm Hg	146±20	149±20*	145±20
Diastolic blood pressure, mm Hg	82±10	83±10†	81±10
Heart rate, bpm	66±11	66±11	66±12
Body surface area, m ²	1.89±0.20	1.92±0.20*	1.88±0.20
Body mass index, kg/m ²	26.8±4.3	28.5±4.6*	25.9±3.9
Baseline hypertension, %	83.0	88.2*	80.2
Baseline current smoker, %	19.0	15.4*	21.1
Serum creatinine, mg/dL	1.06±0.18	1.06±0.18	1.06±0.17

LV indicates left ventricular.

**P*<0.01 vs no LV hypertrophy group.

†*P*<0.05 vs no LV hypertrophy group.

concentric LV geometry, and concomitant hypertension (Table 3). Similar results were found in a second model, replacing concentric geometry by stress-corrected midwall shortening (hazard ratio, 1.13 for primary end point per 1 SD

higher LV mass index [95% confidence interval, 1.02–1.24]; *P*=0.017). Adding the presence of aortic regurgitation or type of antihypertensive drug among the covariates did not influence results.

Table 2. Echocardiographic Findings in the Total Study Population and in Patients With or Without LV Hypertrophy at Baseline

Variable	Total Population, n=1616	LV Hypertrophy, n=592	No LV Hypertrophy, n=1064
LV end-diastolic diameter, cm	5.03±0.63	5.29±0.63*	4.89±0.57
LV end-systolic diameter, cm	3.19±0.55	3.42±0.57*	3.06±0.50
Interventricular septal thickness, cm	1.15±0.28	1.34±0.27*	1.05±0.22
Posterior wall thickness, cm	0.89±0.19	1.02±0.18*	0.81±0.14
LV fractional shortening, %	37±6	35±6*	37±6
LV ejection fraction, %	66±7	66±7*	67±6
Circumferential end-systolic stress, dyne/cm ²	112±32	111±32	113±31
Midwall fractional shortening, %	17.0±3.3	15.6±3.0*	17.9±3.2
Stress-corrected midwall shortening, %	98±19	89±18*	102±19
Relative wall thickness	0.36±0.09	0.39±0.10*	0.34±0.08
LV mass, g	193±67	252±66*	160±39
LV mass index, g/m ^{2.7}	45.6±14.5	60.5±12.2*	37.3±7.1
Aortic valve velocity, m/s	3.08±0.54	3.18±0.56*	3.03±0.52
Aortic valve mean gradient, mm Hg	23±9	24±9*	22±8
Aortic valve area/body surface area, cm ² /m ²	0.67±0.23	0.66±0.22	0.68±0.24
Energy loss index, cm ² /m ²	0.90±0.46	0.86±0.43†	0.92±0.47
Stroke volume, mL	45±13	46±14†	44±13
Aortic regurgitation, %	60.2	62.2*	59.1
Grade 1, %	43.4	41.6	44.3
Grade 2, %	16.1	19.7	14.2
Grade 3, %	0.7	0.9	0.6

LV indicates left ventricular.

**P*<0.01 vs no LV hypertrophy group.

†*P*<0.05 vs no LV hypertrophy group.

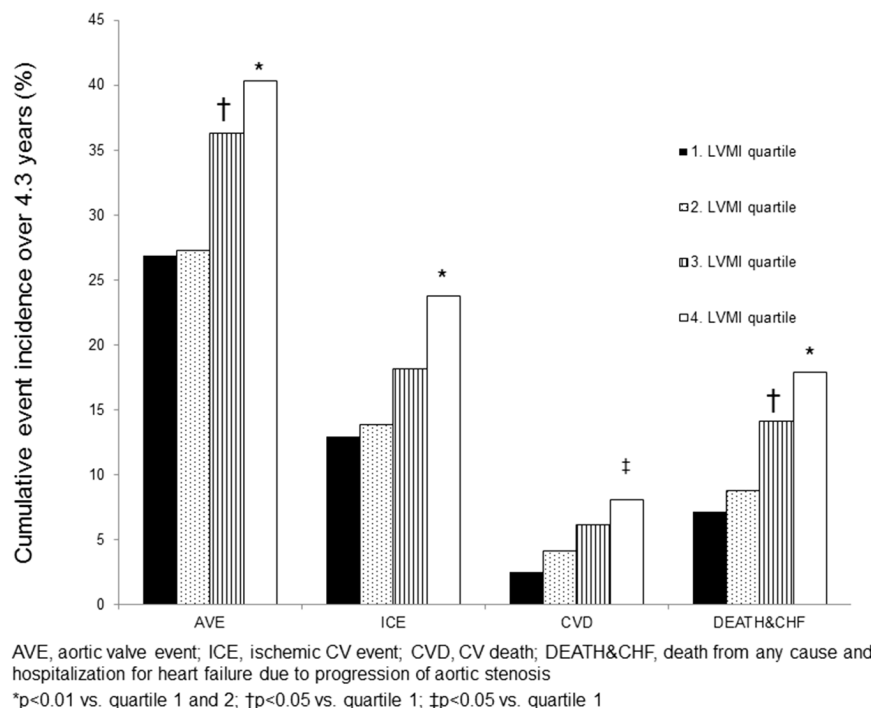


Figure 1. Cumulative incidences of aortic valve events (AVE), ischemic cardiovascular (CV) events (ICE), CV death (CVD), and combined death from any cause and hospitalization for heart failure because of progression of aortic stenosis (DEATH&CHF) during >4.3 years of follow-up in relation to quartile of baseline left ventricular (LV) mass index in mild-to-moderate asymptomatic aortic stenosis.

In a secondary set of models, having LV hypertrophy on the baseline echocardiogram was associated with higher rates of the primary and secondary composite study end points and combined all-cause death and hospitalization for heart failure, consistent with the outcome association demonstrated for LV mass index (Table 4; Figure 2).

In multivariable linear regression higher LV mass/height^{2.7} at the last study echocardiogram was associated with male sex ($\beta=0.06$), and higher mean aortic gradient ($\beta=0.15$), systolic blood pressure ($\beta=0.04$), body mass index

($\beta=0.14$), initial LV mass/height^{2.7} ($\beta=0.54$), and presence of normal midwall shortening ($\beta=0.05$, all $P<0.05$) at the baseline echocardiogram. To take into account the progressive increase in LV mass during progression of AS, a set of time-varying Cox regression models were used. Higher LV mass index during follow-up was associated with a 16% higher rate of the primary study end point, 13% higher rate of aortic valve events, 25% higher rate of ischemic cardiovascular events, 63% higher cardiovascular mortality, and 44% higher combined death from any cause and hospitalization

Table 3. Impact of Baseline Left Ventricular Mass Index (Per 1 SD [15 g/m^{2.7}] Higher) on the Rates of the Primary and Secondary Study End Points, Hospitalization for Heart Failure, Cardiovascular Death, All-Cause Death, and Combined All-Cause Death and Hospitalization for Heart Failure During >4.3 Years of Follow-Up in Patients With Initially Asymptomatic AS

Study End Point	No. of Events	Unadjusted HR (95% CI)	P Value	Adjusted HR (95% CI)*	P Value
Primary study end point	498	1.23 (1.14–1.37)	<0.001	1.12 (1.02–1.23)	0.020
Aortic valve events	468	1.19 (1.11–1.29)	<0.001	1.09 (0.99–1.19)	0.083
Aortic valve replacement	411	1.17 (1.07–1.27)	<0.001	1.03 (0.93–1.14)	0.562
Heart failure due to progression of AS	36	1.47 (1.16–1.61)	0.001	na	
Cardiovascular death	66	1.34 (1.12–1.70)	<0.001	1.34 (1.07–1.67)	0.011
Ischemic cardiovascular events	232	1.28 (1.15–1.43)	<0.001	1.28 (1.13–1.47)	<0.001
Total mortality	129	1.27 (1.11–1.46)	<0.001	1.19 (1.01–1.42)	0.048
Total mortality and hospitalization for heart failure	149	1.30 (1.15–1.47)	<0.001	1.23 (1.05–1.44)	0.011

Univariable and multivariable Cox regression analyses. AS indicates aortic stenosis; CI, confidence interval; HR, hazard ratio; and na, multivariable analysis not performed because of low number of events.

*Adjusted for aortic jet velocity, sex, age, left ventricular ejection fraction, body mass index, randomized study treatment, hypertension, concentric left ventricular geometry, and valvuloarterial impedance.

Table 4. Impact of Baseline Left Ventricular Hypertrophy on the Rates of the Primary and Secondary Study End Points, Hospitalization for Heart Failure, Cardiovascular Death, All-Cause Death, and Combined All-Cause Death and Hospitalization for Heart Failure During >4.3 Years of Follow-Up in Patients With Initial Asymptomatic AS

Study End Point	No. of Events	Unadjusted HR (95% CI)	P Value	Adjusted HR (95% CI)*	P Value
Primary study end point	498	1.53 (1.30–1.81)	<0.001	1.26 (1.03–1.54)	0.022
Aortic valve events	468	1.50 (1.27–1.79)	<0.001	1.25 (1.02–1.54)	0.035
Aortic valve replacement	411	1.46 (1.22–1.76)	<0.001	1.21 (0.97–1.52)	0.087
Heart failure due to progression of AS	36	2.08 (1.08–4.00)	0.028	na	...
Cardiovascular death	66	1.68 (1.06–2.65)	0.026	1.35 (0.79–2.11)	0.277
Ischemic cardiovascular events	232	1.55 (1.22–1.98)	<0.001	1.42 (1.06–1.89)	0.017
Total mortality	129	1.61 (1.17–2.23)	0.004	1.31 (0.89–1.94)	0.178
Total mortality and hospitalization for heart failure	149	1.67 (1.24–2.26)	0.001	1.35 (0.94–1.92)	0.110

Univariable and multivariable Cox regression analyses. AS indicates aortic stenosis; CI, confidence interval; HR, hazard ratio; and na, multivariable analysis not performed due to low number of events.

*Adjusted for aortic jet velocity, sex, age, left ventricular ejection fraction, body mass index, randomized study treatment, relative wall thickness, hypertension, and valvuloarterial impedance.

for heart failure (all $P < 0.01$; Table 5). In subsequent models replacing energy loss index by peak aortic jet velocity, mean aortic valve gradient, or aortic valve area as measure of AS severity, or LV ejection fraction by midwall shortening or stress-corrected midwall shortening, the results did not change (data not shown).

Discussion

This is the first large prospective study to assess the prognostic impact of LV mass and hypertrophy assessed by echocardiography in patients with asymptomatic mild-to-moderate AS without known coronary heart disease or diabetes mellitus. As demonstrated by our results, higher LV mass at baseline or during follow-up was associated with higher rates of both the primary and secondary prespecified composite study end points in the SEAS study, resulting in a considerably increased overall cardiovascular morbidity and mortality. These findings were also independent of documented prognosticators in asymptomatic AS, including AS severity, hypertension, body mass index, sex, LV ejection fraction, and concentric LV geometry.^{4,7,8,21–23} Of note, patients in the highest versus lowest quartile of LV mass index at baseline had a 13% higher 4.3-year cumulative incidence of aortic valve events and a 11% higher incidence of combined death from any cause and hospitalization for heart failure, corresponding to absolute differences of 3.0% and 2.6% per year, respectively.

Traditionally, development of LV hypertrophy in AS has been considered a physiological, compensatory process taking advantage of Laplace's law to sustain normal systolic function during chronically elevated systolic stress.^{4,24} However, as recently demonstrated, concomitant hypertension, obesity, and the presence of the metabolic syndrome have been associated with increased LV mass in patients with asymptomatic nonsevere AS, suggesting that development of LV hypertrophy is multifactorial also in patients with AS.^{5–7} The relatively larger impact of hypertension on LV wall volume in mild-to-moderate AS than of AS itself has also been demonstrated in

experimental simulation models by Garcia et al.²⁵ However, having increased LV mass on the baseline echocardiogram was associated with increased event rates in the present study independent of the prognostic impact of concomitant hypertension and increased body mass index previously demonstrated in asymptomatic mild-to-moderate AS.^{21–23}

Risk prediction in asymptomatic AS remains a challenge, including identification of AS patient with high risk for development of congestive heart failure, the most prognostically severe complication of AS.²⁶ Both American and European guidelines recommend aortic valve replacement in patients with severe AS irrespective of symptoms if LV dysfunction defined as LV ejection fraction <50% is present.^{27,28} Population-based studies have demonstrated that increased LV mass was associated with incident heart failure independent of LV ejection fraction and independent of incident myocardial infarction.^{29–31} The present findings expands this knowledge by demonstrating that also in patients with mild-to-moderate AS, increased LV mass index is associated with higher rate of combined death and heart failure independent of LV systolic function. Current European guidelines suggest excessive LV hypertrophy unless because of hypertension among indications for aortic valve replacement in AS,²⁸ as this has been associated with increased perioperative morbidity and mortality and may be less reversible after delayed surgery, precluding an optimal long-term prognosis.^{8,32} The present results from the large SEAS study document the association of increased LV mass with increased cardiovascular morbidity and mortality also in patients with asymptomatic mild-to-moderate AS independent of the presence of concomitant hypertension. Our findings contrast with previous reports from smaller studies in patients with moderate to-severe AS. Stewart et al³³ following 183 patients with initially asymptomatic moderate or severe AS for a median of 31 months found that neither LV mass nor tissue Doppler measures of LV systolic and diastolic function predicted outcome independent of AS severity. Similar findings were reported by Monin et al³⁴ in a study of 107 patients

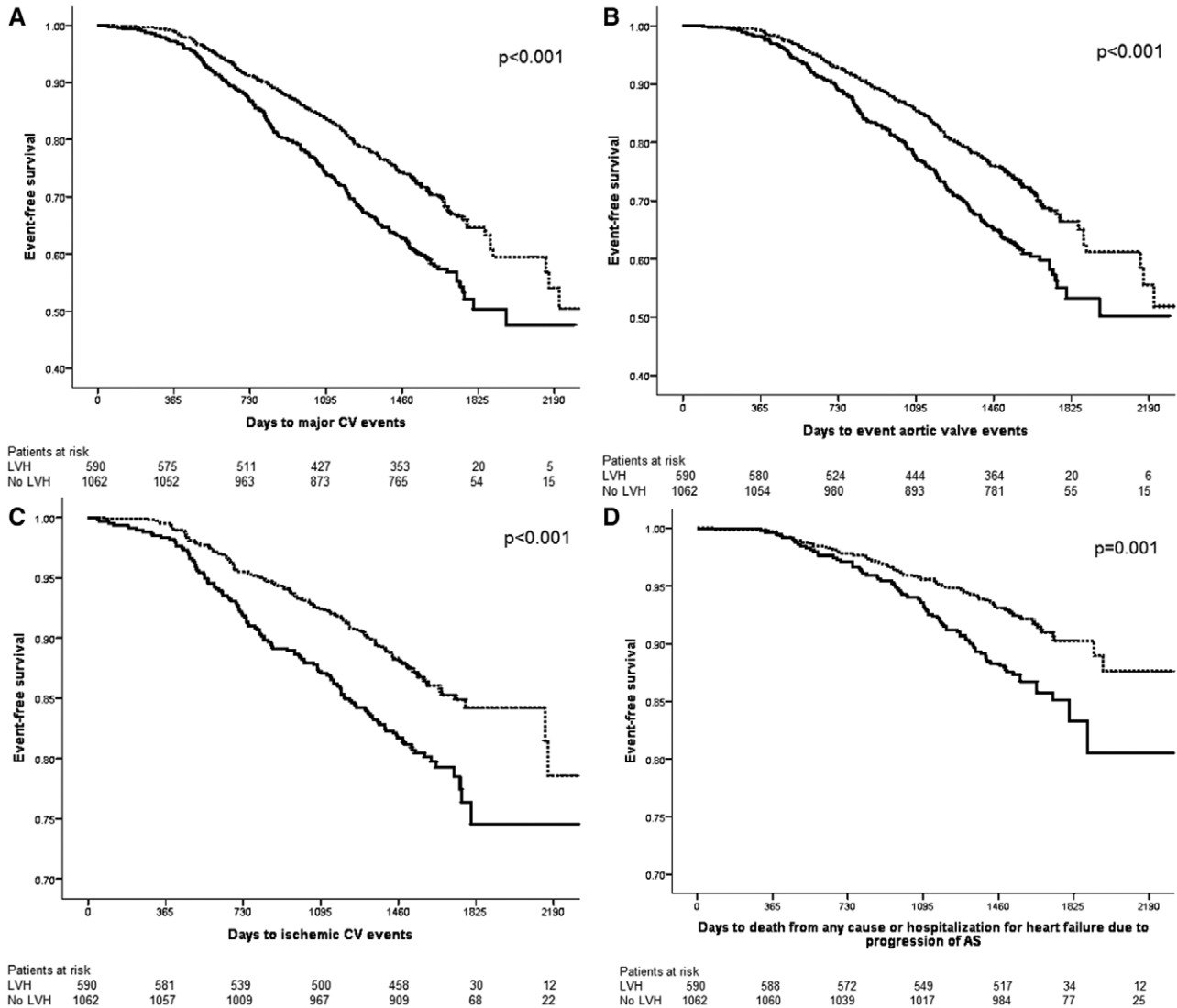


Figure 2. Survival free from major cardiovascular (CV) events (A), aortic valve events (B), ischemic CV events (C), and combined death from any cause and hospitalization for heart failure because of progression of aortic stenosis (AS; D) in groups of patients with (—) and without (---) left ventricular hypertrophy (LVH) on the baseline echocardiogram.

with moderate-to-severe AS, who therefore did not include LV mass in the suggested risk assessment score for asymptomatic patients with moderate-to-severe AS based on their findings. Electrocardiographic LV strain pattern was recently suggested as a strong correlate of mortality and hospitalization for heart failure by Greve et al³⁵ in a SEAS substudy. Of note, electrocardiographic strain pattern was not significantly associated with either cardiovascular death or all-cause mortality when mean aortic gradient was included as covariate in their multivariable models, in contrast to the strong independent association with echocardiographic LV mass and hypertrophy reported in the present article. However, Shah et al³⁶ documented that electrocardiographic strain pattern as a highly specific marker of midwall myocardial fibrosis, reflecting more advanced myocardial injury, LV decompensation, and impaired prognosis.^{35–37}

Both LV mass and concentricity increased considerably during follow-up. Concentric LV geometric patterns have been demonstrated to carry individual risk of cardiovascular

morbidity and mortality in hypertension.³⁸ Furthermore, an association with reduced coronary flow reserve as a substrate for reduced myocardial function in hypertensive subjects with LV concentric geometry free from coronary artery disease has been reported by Galderisi et al.³⁹ In patients operated for AS, both concentric LV geometry and excessive LV hypertrophy have been associated with higher postoperative mortality.^{8,9} Cioffi et al¹⁰ previously demonstrated that excessive LV hypertrophy was the strongest correlate of combined death, congestive heart failure, and nonfatal myocardial infarction in 218 patients with asymptomatic severe AS. Of note, these findings were independent of patient age, extent of aortic valve calcification, renal dysfunction, or the presence of concomitant diabetes mellitus, all factors that have been associated with worsened prognosis in previous studies in asymptomatic severe AS.^{10,40,41} The present results expand this knowledge by demonstrating the independent prognostic importance of higher LV mass in a large prospective study of patients with initially asymptomatic mild-to-moderate AS.

Table 5. Impact of In-Study Left Ventricular Mass Index (Per 1 SD [15 g/m^{2.7}] Higher) on the Rates of Study End Points During >4.3 Years of Follow-Up in Patients With Initial Asymptomatic Aortic Stenosis

Study End Point	No. of Events	HR (95% CI)*	P Value
Primary study end point	466	1.16 (1.05–1.28)	0.004
Aortic valve events	435	1.13 (1.01–1.25)	0.027
Aortic valve replacement	381	1.05 (0.93–1.17)	0.455
Cardiovascular death	62	1.61 (1.29–2.00)	<0.001
Ischemic cardiovascular events	220	1.25 (1.08–1.43)	0.002
Total mortality	125	1.42 (1.20–1.68)	<0.001
Total mortality and hospitalization for heart failure	141	1.42 (1.21–1.66)	<0.001

Time-varying multivariable Cox regression analyses. CI indicates confidence interval; and HR, hazard ratio.

*Adjusted for time-varying aortic jet velocity, left ventricular ejection fraction, body mass index, concentric LV geometry and valvuloarterial impedance, baseline age, sex, hypertension, and randomized study treatment.

Limitations

Patients with known coronary heart disease, heart failure, diabetes mellitus, history of stroke or peripheral vascular disease, other clinically significant valve disease, rheumatic valve disease, or renal insufficiency and patients with a guideline indication for lipid-lowering therapy were not included in the SEAS study. Thus, projection of study results to these patient groups should be done with caution.

In the SEAS study, referral for aortic valve replacement was left to the decision of the attending cardiologist at the 173 participating centers, and the basis for referral of individual patients for surgery was not captured in the study database. We cannot exclude that presence of extreme LV hypertrophy may have influenced the decision to refer for surgery in individual cases. However, an independent impact of higher LV mass index was also found with the more objective end points cardiovascular and total mortality.

Several studies have found speckle strain imaging, in particular 2-dimensional (2D) global longitudinal strain, useful for detecting asymptomatic AS patients with more advanced LV injury despite normal LV ejection fraction.^{41–43} Lower global longitudinal strain in these patients has been associated with higher LV mass, concentric LV geometry, more severe AS, concomitant hypertension,⁴¹ and with impaired prognosis.⁴² Recently, Nagata et al⁴³ reported the superior performance of 3D compared with 2D global longitudinal strain for risk prediction in such patients, also when adjusting for LV mass in multivariate analysis. However, speckle tracking echocardiography was not included in the large SEAS study, where the majority of echocardiogram were recorded on video tapes during the period 2002 to 2008.

Maréchaux et al⁴⁴ have demonstrated the usefulness of exercise stress echocardiography for risk stratification in asymptomatic patients with severe AS, and current European guidelines include exercise testing for additional risk assessment in patients with asymptomatic severe AS.²⁸ However, exercise testing was not included in the large SEAS study, which was undertaken in 173 study centers during the years 2002 to 2008.

Conclusions

In patients with asymptomatic AS, higher LV mass index is independently associated with increased cardiovascular morbidity and mortality during progression of valve stenosis.

Sources of Funding

The Simvastatin Ezetimibe in Aortic Stenosis (SEAS) echocardiography core laboratory was supported by the MSP Singapore Company, LLC, Singapore, a partnership between Merck & Co., Inc. and the Schering-Plough Corporation.

Disclosures

Drs Pedersen, Rossebø, and Gerdts were members of the Scientific Steering Committee for the Simvastatin Ezetimibe in Aortic Stenosis (SEAS) study in the years 2002 to 2008 and received honoraria for this work. The other authors have no conflicts.

References

- Levy D, Garrison RJ, Savage DD, Kannel WB, Castelli WP. Prognostic implications of echocardiographically determined left ventricular mass in the Framingham Heart Study. *N Engl J Med.* 1990;322:1561–1566. doi: 10.1056/NEJM199005313222203.
- Koren MJ, Devereux RB, Casale PN, Savage DD, Laragh JH. Relation of left ventricular mass and geometry to morbidity and mortality in uncomplicated essential hypertension. *Ann Intern Med.* 1991;114:345–352.
- de Simone G, Izzo R, Chinali M, De Marco M, Casaluovo G, Rozza F, Giffoglio D, Iovino GL, Trimarco B, De Luca N. Does information on systolic and diastolic function improve prediction of a cardiovascular event by left ventricular hypertrophy in arterial hypertension? *Hypertension.* 2010;56:99–104. doi: 10.1161/HYPERTENSIONAHA.110.150128.
- Aurigemma GP, Silver KH, McLaughlin M, Mauser J, Gaasch WH. Impact of chamber geometry and gender on left ventricular systolic function in patients >60 years of age with aortic stenosis. *Am J Cardiol.* 1994;74:794–798.
- Rieck AE, Cramariuc D, Staal EM, Rossebø AB, Wachtell K, Gerdts E. Impact of hypertension on left ventricular structure in patients with asymptomatic aortic valve stenosis (a SEAS substudy). *J Hypertens.* 2010;28:377–383. doi: 10.1097/HJH.0b013e328332fa44.
- Lund BP, Gohlke-Bärwolf C, Cramariuc D, Rossebø AB, Rieck AE, Gerdts E. Effect of obesity on left ventricular mass and systolic function in patients with asymptomatic aortic stenosis (a Simvastatin Ezetimibe in Aortic Stenosis [SEAS] substudy). *Am J Cardiol.* 2010;105:1456–1460. doi: 10.1016/j.amjcard.2009.12.069.
- Pagé A, Dumesnil JG, Clavel MA, Chan KL, Teo KK, Tam JW, Mathieu P, Després JP, Pibarot P; ASTRONOMER Investigators. Metabolic syndrome is associated with more pronounced impairment of left ventricle geometry and function in patients with calcific aortic stenosis: a substudy of the ASTRONOMER (Aortic Stenosis Progression Observation Measuring Effects of Rosuvastatin). *J Am Coll Cardiol.* 2010;55:1867–1874. doi: 10.1016/j.jacc.2009.11.083.
- Orsinelli DA, Aurigemma GP, Battista S, Krendel S, Gaasch WH. Left ventricular hypertrophy and mortality after aortic valve replacement for aortic stenosis. A high risk subgroup identified by preoperative relative wall thickness. *J Am Coll Cardiol.* 1993;22:1679–1683.
- Duncan AI, Lowe BS, Garcia MJ, Xu M, Gillinov AM, Mihaljevic T, Koch CG. Influence of concentric left ventricular remodeling on early mortality after aortic valve replacement. *Ann Thorac Surg.* 2008;85:2030–2039. doi: 10.1016/j.athoracsur.2008.02.075.
- Cioffi G, Faggiano P, Vizzardi E, Tarantini L, Cramariuc D, Gerdts E, de Simone G. Prognostic effect of inappropriately high left ventricular mass in asymptomatic severe aortic stenosis. *Heart.* 2011;97:301–307. doi: 10.1136/hrt.2010.192997.
- Lindman BR, Pibarot P, Hahn RT, Otto CM, Xu K, Devereux RB, Weissman NJ, Enrique-Sarano M, Szeto W, Makkar R, Miller DC, Lerakis S, Bower B, Greason K, McAndrew T, Lei Y, Leon M, Douglas P. Early regression of severe left ventricular hypertrophy after transcatheter aortic valve replacement is associated with decreased hospitalizations. *JACC Cardiovasc Interv.* 2014;7:662–673. doi: 10.1016/j.jcin.2014.02.011.
- Rossebø AB, Pedersen TR, Allen C, Boman K, Boman K, Chambers J, Egstrup K, Gerdts E, Gohlke-Bärwolf C, Holme I, Kesäniemi VA, Malbecq W, Nienaber C, Ray S, Skjaerpe T, Wachtell K, Willenheimer R. Design

- and baseline characteristics of the simvastatin and ezetimibe in aortic stenosis (SEAS) study. *Am J Cardiol*. 2007;99:970–973. doi: 10.1016/j.amjcard.2006.10.064.
13. Rossebø AB, Pedersen TR, Boman K, Brudi P, Chambers JB, Egstrup K, Gerdts E, Gohlke-Bärwolf C, Holme I, Kesäniemi YA, Malbecq W, Nienaber CA, Ray S, Skjaerpe T, Wachtell K, Willenheimer R; SEAS Investigators. Intensive lipid lowering with simvastatin and ezetimibe in aortic stenosis. *N Engl J Med*. 2008;359:1343–1356. doi: 10.1056/NEJMoa0804602.
 14. Cramariuc D, Rieck AE, Staal EM, Wachtell K, Eriksen E, Rossebø AB, Gerdts E. Factors influencing left ventricular structure and stress-corrected systolic function in men and women with asymptomatic aortic valve stenosis (a SEAS Substudy). *Am J Cardiol*. 2008;101:510–515. doi: 10.1016/j.amjcard.2007.09.100.
 15. Lang RM, Badano LP, Mor-Avi V, Afilalo J, Armstrong A, Ernande L, Flachskampf FA, Foster E, Goldstein SA, Kuznetsova T, Lancellotti P, Muraru D, Picard MH, Rietzschel ER, Rudski L, Spencer KT, Tsang W, Voigt JU. Recommendations for cardiac chamber quantification by echocardiography in adults: an update from the American Society of Echocardiography and the European Association of Cardiovascular Imaging. *J Am Soc Echocardiogr*. 2015;28:1–39.e14. doi: 10.1016/j.echo.2014.10.003.
 16. Baumgartner H, Hung J, Bermejo J, Chambers JB, Evangelista A, Griffin BP, Iung B, Otto CM, Pellikka PA, Quiñones M; American Society of Echocardiography; European Association of Echocardiography. Echocardiographic assessment of valve stenosis: EAE/ASE recommendations for clinical practice. *J Am Soc Echocardiogr*. 2009;22:1–23; quiz 101. doi: 10.1016/j.echo.2008.11.029.
 17. Devereux RB, Alonso DR, Lutas EM, Gottlieb GJ, Campo E, Sachs I, Reichel N. Echocardiographic assessment of left ventricular hypertrophy: comparison to necropsy findings. *Am J Cardiol*. 1986;57:450–458.
 18. Rieck AE, Gerdts E, Lønnebakken MT, Bahlmann E, Cioffi G, Gohlke-Bärwolf C, Ray S, Cramariuc D. Global left ventricular load in asymptomatic aortic stenosis: covariates and prognostic implication (the SEAS trial). *Cardiovasc Ultrasound*. 2012;10:43. doi: 10.1186/1476-7120-10-43.
 19. Bahlmann E, Cramariuc D, Gerdts E, Gohlke-Baerwolf C, Nienaber CA, Eriksen E, Wachtell K, Chambers J, Kuck KH, Ray S. Impact of pressure recovery on echocardiographic assessment of asymptomatic aortic stenosis: a SEAS substudy. *JACC Cardiovasc Imaging*. 2010;3:555–562. doi: 10.1016/j.jcmg.2009.11.019.
 20. Bahlmann E, Gerdts E, Cramariuc D, Gohlke-Baerwolf C, Nienaber CA, Wachtell K, Seifert R, Chambers JB, Kuck KH, Ray S. Prognostic value of energy loss index in asymptomatic aortic stenosis. *Circulation*. 2013;127:1149–1156. doi: 10.1161/CIRCULATIONAHA.112.078857.
 21. Rieck AE, Cramariuc D, Boman K, Gohlke-Bärwolf C, Staal EM, Lønnebakken MT, Rossebø AB, Gerdts E. Hypertension in aortic stenosis: implications for left ventricular structure and cardiovascular events. *Hypertension*. 2012;60:90–97. doi: 10.1161/HYPERTENSIONAHA.112.194878.
 22. Rogge BP, Cramariuc D, Lønnebakken MT, Gohlke-Bärwolf C, Chambers JB, Boman K, Gerdts E. Effect of overweight and obesity on cardiovascular events in asymptomatic aortic stenosis: a SEAS substudy (Simvastatin Ezetimibe in Aortic Stenosis). *J Am Coll Cardiol*. 2013;62:1683–1690. doi: 10.1016/j.jacc.2013.04.081.
 23. Pellikka PA, Sarano ME, Nishimura RA, Malouf JF, Bailey KR, Scott CG, Barnes ME, Tajik AJ. Outcome of 622 adults with asymptomatic, hemodynamically significant aortic stenosis during prolonged follow-up. *Circulation*. 2005;111:3290–3295. doi: 10.1161/CIRCULATIONAHA.104.495903.
 24. Sasayama S, Ross J Jr, Franklin D, Bloor CM, Bishop S, Dilley RB. Adaptations of the left ventricle to chronic pressure overload. *Circ Res*. 1976;38:172–178.
 25. Garcia D, Pibarot P, Kadem L, Durand LG. Respective impacts of aortic stenosis and systemic hypertension on left ventricular hypertrophy. *J Biomech*. 2007;40:972–980. doi: 10.1016/j.jbiomech.2006.03.020.
 26. Ross J Jr, Braunwald E. Aortic stenosis. *Circulation*. 1968;38(1 Suppl):61–67.
 27. Nishimura RA, Otto CM, Bonow RO, Carabello BA, Erwin JP 3rd, Guyton RA, O’Gara PT, Ruiz CE, Skubas NJ, Sorajja P, Sundt TM 3rd, Thomas JD; ACC/AHA Task Force Members. 2014 AHA/ACC Guideline for the Management of Patients With Valvular Heart Disease: a report of the American College of Cardiology/American Heart Association Task Force on Practice Guidelines. *Circulation*. 2014;129:e521–e643. doi: 10.1161/CIR.0000000000000031.
 28. Vahanian A AO, Andreotti F, Antunes MJ, Barón-Esquivias G, Baumgartner H, Borger MA, Carrel TP, De Bonis M, Evangelista A, Falk V, Iung B, Lancellotti P, Pierard L, Price S, Schäfers HJ, Schuler G, Stepinska J, Swedberg K, Takkenberg J, Von Oppell UO, Windecker S, Zamorano JL, Zembala M; ESC Committee for Practice Guidelines (CPG), Bax JJ, Baumgartner H, Ceconi C, Dean V, Deaton C, Fagard R, Funck-Brentano C, Hasdai D, Hoes A, Kirchhof P, Knuuti J, Kolh P, McDonagh T, Moulin C, Popescu BA, Reiner Z, Sechtem U, Sirnes PA, Tendera M, Torbicki A, Vahanian A, Windecker S; Document Reviewers: Popescu BA, Von Segesser L, Badano LP, Bunc M, Claeys MJ, Drinkovic N, Filippatos G, Habib G, Kappetein AP, Kassab R, Lip GY, Moat N, Nickenig G, Otto CM, Pepper J, Piazza N, Pieper PG, Rosenhek R, Shuka N, Schwammenthal E, Schwitler J, Mas PT, Trindade PT, Walther T. Guidelines on the management of valvular heart disease (version 2012): The Joint Task Force on the Management of Valvular Heart Disease of the European Society of Cardiology (ESC) and the European Association for Cardio-Thoracic Surgery (EACTS). *Eur Heart J*. 2012;33:2451–2496.
 29. Devereux RB, Roman MJ, Liu JE, Welty TK, Lee ET, Rodeheffer R, Fabsitz RR, Howard BV. Congestive heart failure despite normal left ventricular systolic function in a population-based sample: the Strong Heart Study. *Am J Cardiol*. 2000;86:1090–1096.
 30. de Simone G, Gottdiener JS, Chinali M, Maurer MS. Left ventricular mass predicts heart failure not related to previous myocardial infarction: the Cardiovascular Health Study. *Eur Heart J*. 2008;29:741–747. doi: 10.1093/eurheartj/ehm605.
 31. Liao Y, Cooper RS, McGee DL, Mensah GA, Ghali JK. The relative effects of left ventricular hypertrophy, coronary artery disease, and ventricular dysfunction on survival among black adults. *JAMA*. 1995;273:1592–1597.
 32. Lund O, Kristensen LH, Baandrup U, Hansen OK, Nielsen TT, Emmertsen K, Jensen FT, Flø C, Rasmussen BS, Pilegaard HK. Myocardial structure as a determinant of pre- and postoperative ventricular function and long-term prognosis after valve replacement for aortic stenosis. *Eur Heart J*. 1998;19:1099–1108.
 33. Stewart RA, Kerr AJ, Whalley GA, Legget ME, Zeng I, Williams MJ, Lainchbury J, Hamer A, Doughty R, Richards MA, White HD; New Zealand Heart Valve Study Investigators. Left ventricular systolic and diastolic function assessed by tissue Doppler imaging and outcome in asymptomatic aortic stenosis. *Eur Heart J*. 2010;31:2216–2222. doi: 10.1093/eurheartj/ehq159.
 34. Monin JL, Lancellotti P, Monchi M, Lim P, Weiss E, Piérard L, Guéret P. Risk score for predicting outcome in patients with asymptomatic aortic stenosis. *Circulation*. 2009;120:69–75. doi: 10.1161/CIRCULATIONAHA.108.808857.
 35. Greve AM, Boman K, Gohlke-Baerwolf C, Kesäniemi YA, Nienaber C, Ray S, Egstrup K, Rossebø AB, Devereux RB, Køber L, Willenheimer R, Wachtell K. Clinical implications of electrocardiographic left ventricular strain and hypertrophy in asymptomatic patients with aortic stenosis: the Simvastatin and Ezetimibe in Aortic Stenosis study. *Circulation*. 2012;125:346–353. doi: 10.1161/CIRCULATIONAHA.111.049759.
 36. Shah AS, Chin CW, Vassiliou V, Cowell SJ, Doris M, Kwok TC, Semple S, Zamvar V, White AC, McKillop G, Boon NA, Prasad SK, Mills NL, Newby DE, Dweck MR. Left ventricular hypertrophy with strain and aortic stenosis. *Circulation*. 2014;130:1607–1616. doi: 10.1161/CIRCULATIONAHA.114.011085.
 37. Dweck MR, Joshi S, Murigu T, Alpendurada F, Jabbour A, Melina G, Banya W, Gulati A, Roussin I, Raza S, Prasad NA, Wage R, Quarto C, Angeloni E, Refice S, Sheppard M, Cook SA, Kilner PJ, Pennell DJ, Newby DE, Mohiaddin RH, Pepper J, Prasad SK. Midwall fibrosis is an independent predictor of mortality in patients with aortic stenosis. *J Am Coll Cardiol*. 2011;58:1271–1279. doi: 10.1016/j.jacc.2011.03.064.
 38. Gerdts E, Cramariuc D, de Simone G, Wachtell K, Dahlöf B, Devereux RB. Impact of left ventricular geometry on prognosis in hypertensive patients with left ventricular hypertrophy (the LIFE study). *Eur J Echocardiogr*. 2008;9:809–815. doi: 10.1093/ejehoccard/jen155.
 39. Galderisi M, de Simone G, D’Errico A, Sidiropoulos M, Viceconti R, Chinali M, Mondillo S, de Divitiis O. Independent association of coronary flow reserve with left ventricular relaxation and filling pressure in arterial hypertension. *Am J Hypertens*. 2008;21:1040–1046. doi: 10.1038/ajh.2008.226.
 40. Rosenhek R, Binder T, Porenta G, Lang I, Christ G, Schemper M, Maurer G, Baumgartner H. Predictors of outcome in severe, asymptomatic aortic stenosis. *N Engl J Med*. 2000;343:611–617. doi: 10.1056/NEJM200008313430903.
 41. Cramariuc D, Gerdts E, Davidsen ES, Segadal L, Matre K. Myocardial deformation in aortic valve stenosis: relation to left ventricular geometry. *Heart*. 2010;96:106–112. doi: 10.1136/hrt.2009.172569.

42. Kusunose K, Goodman A, Parikh R, Barr T, Agarwal S, Popovic ZB, Grimm RA, Griffin BP, Desai MY. Incremental prognostic value of left ventricular global longitudinal strain in patients with aortic stenosis and preserved ejection fraction. *Circ Cardiovasc Imaging*. 2014;7:938–945. doi: 10.1161/CIRCIMAGING.114.002041.
43. Nagata Y, Takeuchi M, Wu VC, Izumo M, Suzuki K, Sato K, Seo Y, Akashi YJ, Aonuma K, Otsuji Y. Prognostic value of LV deformation parameters using 2D and 3D speckle-tracking echocardiography in asymptomatic patients with severe aortic stenosis and preserved LV ejection fraction. *JACC Cardiovasc Imaging*. 2015;8:235–245. doi: 10.1016/j.jcmg.2014.12.009.
44. Maréchaux S, Hachicha Z, Bellouin A, Dumesnil JG, Meimoun P, Pasquet A, Bergeron S, Arsenault M, Le Tourneau T, Ennezat PV, Pibarot P. Usefulness of exercise-stress echocardiography for risk stratification of true asymptomatic patients with aortic valve stenosis. *Eur Heart J*. 2010;31:1390–1397. doi: 10.1093/eurheartj/ehq076.

CLINICAL PERSPECTIVE

It is well known that the presence of left ventricular (LV) hypertrophy by echocardiography predicts increased cardiovascular morbidity and mortality both in general and hypertensive populations. In patients with aortic valve stenosis (AS), LV hypertrophy has traditionally been considered as an adaptive response that keeps LV wall stress close to normal, offsetting the hemodynamic load. Recent publications have demonstrated that the presence of concomitant hypertension, obesity, and metabolic syndrome significantly modulates LV mass and geometry in patients with asymptomatic AS independent of AS severity. Furthermore, excessive LV hypertrophy in severe AS has been associated with incident heart failure and increased mortality. The present study is the first to demonstrate the prognostic impact of LV mass and hypertrophy in a large, prospective study in asymptomatic mild-to-moderate AS. Higher LV mass at baseline or during follow-up was associated with considerable increased overall cardiovascular morbidity and mortality. The findings were independent of other documented prognosticators in asymptomatic AS. Patients in the highest versus the lowest quartile of baseline LV mass index had 2.6% higher incidence per year of death and hospitalization for heart failure. Emerging data suggest that speckle strain echocardiography may be used for further identification of AS patients with more advanced LV injury. Whether asymptomatic AS patients with LV hypertrophy should undergo valve replacement at an earlier stage of disease remains unknown. However, LV hypertrophy in asymptomatic AS should not be regarded as purely compensatory, and referral to a heart valve center for further evaluation may be indicated.

Relation of Left Ventricular Mass to Prognosis in Initially Asymptomatic Mild to Moderate Aortic Valve Stenosis

Eva Gerds, Anne B. Rossebø, Terje R. Pedersen, Giovanni Cioffi, Mai Tone Lønnebakken, Dana Cramariuc, Barbara P. Rogge and Richard B. Devereux

Circ Cardiovasc Imaging. 2015;8:e003644

doi: 10.1161/CIRCIMAGING.115.003644

Circulation: Cardiovascular Imaging is published by the American Heart Association, 7272 Greenville Avenue, Dallas, TX 75231

Copyright © 2015 American Heart Association, Inc. All rights reserved.

Print ISSN: 1941-9651. Online ISSN: 1942-0080

The online version of this article, along with updated information and services, is located on the World Wide Web at:

<http://circimaging.ahajournals.org/content/8/11/e003644>

Free via Open Access

Permissions: Requests for permissions to reproduce figures, tables, or portions of articles originally published in *Circulation: Cardiovascular Imaging* can be obtained via RightsLink, a service of the Copyright Clearance Center, not the Editorial Office. Once the online version of the published article for which permission is being requested is located, click Request Permissions in the middle column of the Web page under Services. Further information about this process is available in the [Permissions and Rights Question and Answer](#) document.

Reprints: Information about reprints can be found online at:
<http://www.lww.com/reprints>

Subscriptions: Information about subscribing to *Circulation: Cardiovascular Imaging* is online at:
<http://circimaging.ahajournals.org/subscriptions/>