

The relationship of left ventricular trabeculation to ventricular function and structure over a 9.5-year follow-up: the MESA study.

Zemrak, F; Ahlman, MA; Captur, G; Mohiddin, SA; Kawel-Boehm, N; Prince, MR; Moon, JC; Hundley, WG; Lima, JA; Bluemke, DA; Petersen, SE

10.1016/j.jacc.2014.08.035

For additional information about this publication click this link.

<http://qmro.qmul.ac.uk/xmlui/handle/123456789/9669>

Information about this research object was correct at the time of download; we occasionally make corrections to records, please therefore check the published record when citing. For more information contact scholarlycommunications@qmul.ac.uk

The Relationship of Left Ventricular Trabeculation to Ventricular Function and Structure Over 9.5 Years Follow-Up: the Multi-Ethnic Study of Atherosclerosis

Filip Zemrak, MD,* Mark A. Ahlman, MD,† Gabriella Captur, MD, MSc, ‡
Saidi A. Mohiddin, MBChB, MD,* Nadine Kawel-Boehm, MD§ Martin R. Prince, MD, PhD,||
James C. Moon, MBBCh, MD,‡ William G. Hundley, MD,¶ João A.C. Lima, MD,# David A.
Bluemke, MD, PhD,† Steffen E. Petersen, MD, DPhil, MPH,*

From the: *Centre for Advanced Cardiovascular Imaging, Queen Mary University of London, The London Chest Hospital, United Kingdom; †Department of Radiology and Imaging Sciences, Clinical Center, National Institutes of Health, Bethesda, MD, United States; ‡Institute of Cardiovascular Science, University College London and The Heart Hospital, London, United Kingdom; §Department of Radiology, Kantonsspital Graubuenden, Switzerland; ||Weill Cornell Medical Center, New York, NY, United States; ¶Department of Internal Medicine, Wake Forest University, Winston-Salem, NC, United States; #Cardiology Division, Department of Medicine, Johns Hopkins Hospital, Baltimore, MD

Running title: LV trabeculation and function in MESA

Disclosures: Dr. Prince has patent agreements with GE, Siemens, Philips, Toshiba, Hitachi, Bayer, Bracco, Medrad, Mallinckrodt, Nemoto, and Lantheus. Prof. Petersen discloses a consultancy with Circle Cardiovascular Imaging Inc., Calgary, Canada. All other authors have reported that they have no relevant relationships to the contents of this paper to disclose.

Acknowledgements: The authors thank the other investigators, the staff, and the participants of the MESA study for their valuable contributions. This research was supported by contracts N01-HC-95159, N01-HC-95160, N01-HC-95161, N01-HC-95162, N01-HC-95163, N01-HC-95164, N01-HC-95165, N01-HC-95166, N01-HC-95167, N01-HC-95168 and N01-HC-95169 from the National Heart, Lung, and Blood Institute, and by grants UL1-TR-000040 and UL1-RR-025005 from the National Center for Research Resources. Prof. Petersen, and Drs. Zemrak, and Mohidden gratefully acknowledge funding from the National Institute for Health Research Cardiovascular Biomedical Research Unit at Barts. Prof. Petersen's work is supported by awards establishing the Farr Institute of Health Informatics Research at UCLP Partners from the MRC, in partnership with Arthritis Research UK, the British Heart Foundation, Cancer Research UK, the Economic and Social Research Council, the Engineering and Physical Sciences Research Council, the National Institute of Health Research, the National Institute for Social Care and Health Research (Welsh Assembly Government), the Chief Scientist Office (Scottish Government Health Directorates) and the Wellcome Trust (MR/K006584/1).

Correspondence To:

Professor Steffen E. Petersen
William Harvey Research Institute
NIHR Cardiovascular Biomedical Research Unit at Barts
Charterhouse Square, EC1M 6BQ
London, United Kingdom
E-mail: s.e.petersen@qmul.ac.uk

ABSTRACT

Background: Left ventricular (LV) trabeculation is highly variable between individuals, is increased in some diseases (e.g., congenital heart disease or cardiomyopathies), but its significance in population-representative individuals is unknown.

Objectives: The goal of this study was to determine if excessive LV trabeculation in population-representative subjects is associated with preceding changes in cardiac volumes and function.

Methods: For technical reasons, the extent of trabeculation, expressed as the ratio of noncompacted to compacted (NC/C) myocardium was measured on cardiac magnetic resonance (CMR) long-axis cine images in 2,742 subjects in the Multi-Ethnic Study of Atherosclerosis (mean age 68.7 years, 52.3% women, 56.4% with hypertension, 16.8% with diabetes) at the exam 5. These were considered in quintiles of trabeculation extent, with quintile 5's NC/C 2.46 to 5.41. We determined the relationship between maximal NC/C ratio and preceding change (9.5 years between exam 1 and 5) in end-systolic volume indexed to body surface area (ESVi).

Secondary analyses assessed the associations between maximal NC/C and preceding changes in end-diastolic volume indexed to body surface area (EDVi) and ejection fraction (EF).

Results: Over 9.5 years, ESVi decreased by 1.3 ml/m², EDVi decreased by 5.1 ml/m² and EF decreased by 0.6% (p <0.0001). , Even in subjects with excessive trabeculation, there were no clinically relevant differences in LV volumes and systolic function change between the quintiles of trabeculation extent.

Conclusions: Greater extent of, and even excessive, LV trabeculations, measured in end-diastole in asymptomatic population-representative individuals, appears benign and is not associated with deterioration in LV volumes or function over an almost 10-year period.

Keywords: cardiac magnetic resonance; left ventricular trabeculation; left ventricular function;

Abbreviations

CMR = cardiovascular magnetic resonance

EDVi = end-diastolic volume index

EF = ejection fraction

ESVi = end-systolic volume index

LV = left ventricle/ventricular

LVEF = left ventricular ejection fraction

LVNC = left ventricular noncompaction

MESA = Multi-Ethnic Study of Atherosclerosis

NC/C = noncompaction to compaction

SSFP = steady-state free precession

Human left ventricular (LV) cardiac trabeculation is highly variable between individuals.

Although some differences may be related to ethnicity (1), there have been concerns that extreme trabeculation may be either pathologic or a marker of underlying heart muscle disease. LV non-compaction (LVNC) is considered a distinct form of cardiomyopathy (2, 3), where the hallmark phenotypic feature is extensive LV trabeculation. The disease may lead to cardiac failure, thromboembolism, and malignant arrhythmias. To date, only small studies using cardiovascular magnetic resonance (CMR) have described patterns and extent of LV trabeculations in cohorts with a probable LVNC diagnosis on the basis of symptoms, family history, or impaired cardiac function (4, 5). However, although increased LV trabeculation is associated with other cardiac conditions such as cardiomyopathies (6) and congenital heart diseases (7), it has also been frequently observed in healthy individuals (8). Extensive LV trabeculation is commonly detected following CMR imaging. When LVNC imaging diagnostic criteria are met as an incidental finding, a diagnosis of LVNC remains controversial. The natural history and outcomes in people with pronounced LV trabeculation in the absence of any other structural heart abnormalities is unknown.

This background, combined with difficulties in measuring trabeculae, raised concerns that extensive trabeculation in apparently normal individuals may be either a pre-phenotypic marker of underlying disease, a marker of adverse outcome, or just a normal phenotypic variant.

Accordingly, individuals with extensive trabeculation may be offered costly long-term follow-up and are subject to the emotional and financial implications of a cardiomyopathy diagnosis.

The purpose of this study was to determine the relationship between the extent of LV trabeculation (using CMR) and myocardial structure and function in a large population-based cohort study. Specifically, our primary aim was to evaluate whether excessive LV trabeculation,

measured as the maximal ratio of noncompaction to compaction (NC/C), was associated with preceding changes in end-systolic volume indexed to the body surface area. In secondary analyses, we evaluated associations between maximal NC/C and preceding changes in end-diastolic volume indexed to the body surface area and development of LV dysfunction, expressed by deterioration in LV ejection fraction (EF).

Methods

Study population. The Multi-Ethnic Study of Atherosclerosis (MESA) is a population-based prospective cohort study. See (9) for a full list of participating MESA investigators. Between 2000 and 2002, 5,004 of the 6,814 study participants, who were free of clinically recognized cardiovascular disease and from 4 different ethnicities, underwent CMR imaging at enrollment (exam 1) (10). Of these, 3,016 participants underwent CMR imaging between 2010 and 2011 (exam 5). Study subjects were excluded due to insufficient image quality ($n = 241$) and incomplete CMR data sets ($n = 33$), leaving 2,742 participants (**Figure 1**). Clinical data, including the incidence of heart failure, atrial fibrillation, myocardial infarction, stroke, and transient ischemic attacks were available for all participants. MESA criteria for clinical events and follow-up procedures were previously described (11). Institutional Review Boards of each of the 6 participating field sites in the United States approved the study, and all participants provided written informed consent at the time of enrollment into MESA.

Magnetic resonance imaging. CMR examinations were performed at 6 centers (in Baltimore, Winston-Salem, New York, Minneapolis, Los Angeles, and Chicago) using either a Signa Excite (General Electric Medical Systems, Waukesha, WI) or Avanto/Espreo (Siemens, Erlangen, Germany) 1.5-Tesla MR scanners for exams 1 and 5. Planning of the cardiac cine images for both exams was standardized to minimize variation between centers. Cine images were obtained

with a temporal resolution of approximately 50 ms or less using segmented k-space, electrocardiogram-gated fast spoiled gradient-recalled echo (GRE) pulse sequence during MESA exam 1 (12) and, retrospectively, electrocardiogram-gated long-axis and short-axis cine images were acquired using a steady-state free precession (SSFP) sequence at MESA exam 5. (13)

Image Evaluation

LV volumes and function: All MESA exam 1 and exam 5 CMR images (**Figure 2**) were analyzed for LV volumes and function in a core laboratory and analyzed at a single image analysis center by readers blinded to clinical outcomes, as previously described (13, 14). Calibration between the 2 CMR examinations was performed in 498 participants who had both image sequences acquired at MESA exam 5. The calibration group was selected to be representative of all body sizes. Calibration was performed for both technologist readers (by rereading 498 MESA exam 1 images) and pulse sequences (same technologist reader, analyzing both pulse sequences using identical software). All calibration curves were found to be linear and were fitted with ordinary regression methods.

For quality control purposes, all readers independently analyzed every 10th consecutive CMR exam. The overall interobserver intraclass correlation coefficients for LV mass and LV end-diastolic volume were 0.95 and 0.96, respectively, and technical errors of measurement were 6.1% and 5.4%, respectively. The interobserver agreements were similar to those of the baseline study (12).

LV trabeculation: CMR examinations were evaluated for NC/C ratio using the post-processing software tool, CVI42 (Circle Cardiovascular Imaging Inc., Calgary, Canada). NC/C ratio could only be determined for the MESA exam 5 CMR data, as the CMR sequence used at MESA exam 1 does not provide the level of detail and contrast required. While there are different approaches

to assessing the extent of LV trabeculation in both echocardiography and CMR, we restricted our analysis to the NC/C ratio proposed by Petersen et al. (4).

Horizontal and vertical long axis cine SSFP images were used for measuring the thickness of the compacted myocardium and of the trabeculations at the center of 8 LV regions: anterior; inferior; septal; and lateral at midventricular and apical levels at end-diastole, as previously described by Kawel (8) (**Figure 2**). The NC/C ratio was calculated for each segment. Measurements were not performed at the LV base, as trabeculations are not typically observed in this region. In normal subjects, the true apex is usually very thin, with prominent trabeculations; therefore, it was also excluded (4, 14). Compacted myocardium was defined as a myocardial layer of homogeneous moderate signal intensity on SSFP images without inclusion of blood of higher signal intensity. Trabeculations were defined as a meshwork of the trabeculae carneae of moderate signal intensity adjacent to compacted myocardium interspersed with blood of higher signal intensity. Measurements of the thickness of the compacted myocardium and of adjacent trabeculations were obtained perpendicular to the compacted myocardium. Fifty percent of the thickness of chemical shift artifact (appearing as a black line) on the epicardial surface was included in the compact myocardium. Papillary muscles that were clearly observed as compact tubular structures were not included in the measurements. Short-axis views and cine mode were used additionally to separate papillary muscles from trabeculation. The orientation of long-axis images was cross-referenced with short-axis views, allowing exclusion of off-axis images. Measurements of 60 randomly selected studies were repeated by the first reader and by a second reader to quantify intraobserver and interobserver variability. The NC/C ratio > 2.3 was considered a current diagnostic criterion for LVNC (Petersen's criterion)(4).

Statistical Analysis. Unless otherwise stated, descriptive statistics for continuous variables are presented as mean and the standard deviation (SD), if normally distributed. Categorical variables are presented as a percentage. Differences between quintiles were evaluated by the analysis of variance (ANOVA) with post-hoc Tukey tests for continuous variables and with chi-square tests for categorical variables.

Simple and multivariate linear regression models were developed to examine the relationship of the independent variables (maximal NC/C ratio, NC/C ratio >2.3 in 1 segment and NC/C ratio >2.3 in more than 1 segment) to functional continuous dependent variables related to heart failure, which included changes in LV volumes and EF between exam 1 and exam 5. Covariates used for multivariable regression models are listed in **Table 2**.

All statistical analyses were performed using R software version 3.0.1 (R Foundation for Statistical Computing, Vienna, Austria) (15).

Intraclass correlation coefficients were used to evaluate intraobserver and interobserver agreement. In all cases statistical significance was set for a $p < 0.05$ (2-tailed).

Results

Demographics. Detailed demographic and CMR data are presented in **Table 1**. The mean age of study subjects at exam 5 was 68.7 years (52.3% women). Ethnicity was self-reported as Caucasian/white in 42.1%, Chinese American in 12.5%, African American/black in 24.9%, and Hispanic in 20.5%. Hypertension was present in 56.4% of participants. At exam 5, 536 (19.5%) of the study subjects were treated with angiotensin converting enzyme inhibitors, 248 (9.0%) with angiotensin II antagonists, 475 (17.3%) with beta-blockers and 1,035 (37.7%) subjects were treated with one or more of the above agents. Four hundred and twenty three participants (15.5%) had treated diabetes and 1,456 (53.3%) were current or former smokers. Impaired

systolic function at baseline exam 1 (EF <50%) was present in 111 (4.0%) subjects, but they were symptom-free and there were no differences between quintiles of maximal NC/C ratio ($p = 0.62$).

Extent of LV trabeculation. The NC/C ratio was calculated in 19,320 (88.1%) segments; 2,616 (11.9%) segments were excluded because of insufficient contrast between blood pool and myocardium to confidently measure the NC/C ratios. The intraclass correlation coefficient was 0.83 ($p < 0.0001$) for intraobserver NC/C ratio measurements and 0.82 ($p < 0.0001$) for interobserver measurements. Petersen's LVNC criterion (NC/C >2.3) was fulfilled in 706 (25.7%) of participants for at least 1 cardiac segment and in 218 (8.0%) for at least 2 segments. The mean of the maximal NC/C ratio of each subject's analyzed segments was 1.96 ± 0.66 . This was higher in women: 2.0 ± 0.68 versus 1.92 ± 0.64 ($p < 0.001$), but independent of age ($p = 0.051$). There were no differences in the maximal NC/C ratio between the four ethnicities studied in MESA: 1.98 ± 0.69 in Caucasians, 1.91 ± 0.56 in Chinese Americans, 1.93 ± 0.66 in African-Americans and 2.00 ± 0.65 in Hispanics ($p = 0.08$).

The maximal NC/C ratio correlated with the number of segments fulfilling LVNC criteria ($r = 0.76$, $p < 0.0001$) and was greater in larger LV cavities: the ratio increased by 0.2 ± 2.1 for each 100 ml larger end-diastolic volume ($p < 0.0001$) and by 0.3 ± 3.6 for each 100 ml larger end-systolic volume ($p < 0.0001$). There was no association of maximal NC/C ratio with LV EF ($p = 0.16$).

Relationship between extent of trabeculation and precedent changes in LV volumes and EF

We divided the cohort into quintiles by the extent of maximal NC/C ratio. Detailed demographic data and CMR parameters are presented in **Table 1**.

In the 9.5-year interval between exam 1 and 5, end-systolic volume index decreased on average by $1.3 \pm 7.3 \text{ ml/m}^2$ ($p < 0.0001$), and there were no differences between quintiles of maximal NC/C ratio (**Figure 3**).

Similarly, end-diastolic volume index decreased on average by $5.1 \pm 12.3 \text{ ml/m}^2$ ($p < 0.0001$).

The decrease was smaller with increasing extent of trabeculation; significant differences were seen between quintiles 1 and 4 ($-6.5 \pm 13.1 \text{ ml/m}^2$ vs. $-4.4 \pm 12.3 \text{ ml/m}^2$, $p < 0.05$), between quintiles 1 and 5 ($-6.5 \pm 13.1 \text{ ml/m}^2$ vs. $-3.6 \pm 11.3 \text{ ml/m}^2$, $p < 0.001$) and also between quintiles 2 and 5 ($-6.0 \pm 12.4 \text{ ml/m}^2$ vs. $-4.4 \pm 12.3 \text{ ml/m}^2$, $p < 0.01$) (**Figure 3**).

The EF decreased by $0.6 \pm 7.8\%$ ($p < 0.0001$) over 9.5 years, however there were no differences between the quintiles of maximal NC/C ratio (**Figure 3**). Several demographic parameters and clinical characteristics differed by small amounts, but reached statistical significance in univariate analyses with regards to the extent or distribution between quintiles of maximal NC/C ratio (**Table 1**).

After adjustment for age, sex, ethnicity, and baseline CMR parameters from exam 1 (Model 2), 1 unit greater maximal NC/C ratio (e.g., from 1 to 2, from 2 to 3, and so forth) was associated with $2.7 \pm 16.1 \text{ ml/m}^2$ ($p < 0.0001$) decrease in end-diastolic volume index and $1.0 \pm 10.2 \text{ ml/m}^2$ ($p < 0.0001$) decrease in end-systolic volume index. These models accounted for 26.1% and 19.5% of the variances in the volume changes, respectively (**Table 2**). Multivariate regression models with conventional risk factors (body mass index, systolic blood pressure, diabetes, smoking, total cholesterol to high density lipoprotein ratio) (**Table 2**) as well as exercise, education and family history of heart attack showed similar findings to Model 2 (data not presented). Overall, despite statistical significance, the observed changes in end-diastolic volume index and end-systolic

volume index in relationship to NC/C were not clinically relevant. The maximal NC/C ratio was not associated with a change in LVEF.

Sensitivity analysis. The relationships described earlier for maximal NC/C ratio as a continuous variable were repeated using NC/C ratio >2.3 and number of segments with NC/C ratio >2.3.

All results showed the same trends as for the continuous NC/C ratio variable.

Extent of LV trabeculation and adverse clinical events. The incidence of atrial fibrillation, congestive cardiac failure, stroke, transient ischemic attack, history of myocardial infarction, composite cardiovascular endpoints, and all cardiovascular endpoints in quintiles of maximal NC/C ratio are presented in **Table 3**. In view of low event incidence, no formal statistical analysis was performed.

Discussion

The long-term relationship between excess LV trabeculation and change in myocardial function and structure was not previously known. This is the first study to show that greater extent of LV trabeculation is not associated with an absolute increase in end-systolic and end-diastolic volumes over the almost 10 years of the MESA study. Greater NC/C ratio was not associated with a decline in systolic function.

These results advance our understanding of ventricular morphology in regards to asymptomatic trabeculation in relatively healthy individuals in the community. In particular, MESA subjects with greater trabeculation had only minor relative changes in LV end-diastolic volume index, in comparison to subjects with lesser, although statistically significant, trabeculation, which were unlikely to have clinical implications.

Prevalence of imaging diagnosis LVNC. The estimated prevalence of LVNC is between 0.014% and 1.3% in the general population (2, 16, 17). However, all echocardiographic or CMR-based

imaging criteria for LVNC were established on pre-selected, symptomatic individuals with heart failure or cardiovascular complications. It is important to emphasize that currently there are no diagnostic tools, neither genetic nor imaging, to identify patients affected by LVNC with absolute certainty. This is the main reason why cardiac imaging studies have limitations when attempting to determine diagnostic accuracies on the basis of a likely LVNC diagnosis, rather than a definitive diagnosis.

Recent studies using high-resolution imaging techniques, such as multidetector computed tomography and CMR, revealed the frequent presence of pronounced trabeculation reaching diagnostic thresholds for LVNC in healthy volunteers (8, 18).

This study, which extended Kawel et al.'s analysis of 323 MESA participants free from cardiovascular disease to the whole MESA cohort, showed that only 25.7% fulfilled current diagnostic criteria for LVNC, compared to the 43% described by Kawel. This discrepancy is likely to be partly related to software differences. The CVI42 software used in this analysis allowed identification of "off-axis acquisitions," while the software used by Kawel did not provide a cross-reference tool.

Association of extent of LV trabeculation on adverse cardiac remodeling and clinical outcomes. Baseline LV dimensions and EF are among the most powerful predictors of survival in heart failure and in people without cardiovascular disease, and are now well-established surrogate markers in heart failure trials (19-22). In this study, we evaluated the change in end-systolic volume index, end-diastolic volume index, and EF. Our main findings were that maximal NC/C ratio and other measures of the extent of LV trabeculation were associated with small, but clinically negligible, changes in LV parameters over an almost 10 year of MESA study period. The multivariate regression model incorporating maximal NC/C ratio, demographic

data and the baseline CMR data (Model 2, **Table 2**) increased the explained variance almost 10-fold compared with the model incorporating only the extent of trabeculations and demographic factors (Model 1, **Table 2**), suggesting that the maximal NC/C ratio plays a very small clinical role in cardiac remodeling. End-diastolic and end-systolic volume indices decreased over the 9.5 years of MESA study period, even in participants with the most pronounced trabeculation (by 3.6 ml/m² and 1.0 ml/m² in the highest quintile of maximal NC/C ratio).

In comparison, a previous study by Doughty and colleagues in subjects with congestive heart failure due to ischemic heart disease described an increase in end-diastolic volume index by 10.5 ml/m² over only 12 months in the placebo group (23).

Similarly, measures of the degree of LV trabeculation were not associated with the adverse clinical outcomes known to be associated with a clinical diagnosis of LVNC. These data may seem contrary to the many reports of embolic events in patients with LVNC, however the studied population was considered healthy and the probability of LVNC (or other cardiac diseases) was extremely low in this group.

Importance of clinical information when interpreting imaging LVNC criteria. Our study again demonstrates that Petersen's criteria (NC/C >2.3) are frequent findings in a "healthy" population-representative cohort. Importantly, our study underlines the importance of interpreting such an imaging diagnosis in the context of the available clinical information (24). Our findings suggest that in subjects or patients with a low pre-test probability for cardiomyopathy or LVNC and marked trabeculation, regular and frequent imaging and clinical follow-up may be unnecessary.

Petersen's criteria were derived from a group of patients with high pre-test probability imaged at a tertiary cardiomyopathy center and showed high sensitivity and specificity for diagnosing

LVNC (4). Current diagnostic criteria are applicable as a rule-in test if the suspicion (pre-test probability) of LVNC is over 10%, and could theoretically be used as a rule-out test if applied in patients with low pre-test probability for LVNC (24).

Study limitations. The data of the current study must be interpreted in the context of the study design. As described in the methods section, we were only able to analyze trabeculation on the most recent SSFP cine images from the MESA exam 5 data, but not on the gradient-recalled echocardiogram cine images acquired during the MESA exam 1. Although, this makes the data more applicable to current clinical practice, we imply that trabeculation has not changed over the approximately 10 years beforehand. The rationale for this implication is the evidence that the development and extent of trabeculations are determined during cardiac development in utero (25). Some case reports describe an undulating phenotype of LV trabeculations, but this is unlikely to be common enough to influence this study's results. Despite this, survivor bias may be present and firm conclusions on causality cannot be drawn. This question cannot be addressed without this limitation for another 15 years, until MESA or other large-scale population based cohort studies, such as UK Biobank, have sufficient serial CMR studies using SSFP cines. Adverse clinical events were rare and were therefore not treated as primary outcomes in this paper. Measurement of NC/C ratio is operator dependent; however, there was a good intraobserver and interobserver agreement. We used only 1 approach to measure the extent of LV trabeculations. Other reported strategies differ with respect to measuring in short-axis or long-axis views, measuring at end-diastole or end-systole, calculating ratios based on the thicknesses of trabeculated and compacted myocardial layers or trabecular mass as a percentage of total LV mass. There is currently no consensus as to the best approach, as each has advantages

and disadvantages with respect to their reported diagnostic accuracy, reproducibility, observer variability, and ability to avoid inadvertent inclusion of papillary muscle in the measurements.

Conclusions

Although there is the potential for confounding and survivor bias, this study does not find a clinically relevant impact of trabeculae on LV function measured in end-diastole over an almost 10-year period in a population of representative adult individuals.

This information should guide clinical decision-making in the common scenario of identifying patients with marked LV trabeculation and low pre-test probability of LV noncompaction that there is no clear need for follow-up imaging or pharmacotherapy.

Perspectives

Competency in medical knowledge: More extensive left ventricular trabeculation (the ratio of noncompacted to compacted myocardium) did not predict the development of clinically significant left ventricular enlargement or systolic dysfunction over a decade of follow-up.

Translational Outlook: Since adverse changes in myocardial structure and function are an uncommon sequela of left ventricular noncompaction, further studies in which large numbers of individuals are followed for longer periods are needed to identify predictors of phenotypic cardiomyopathy.

References

1. Kohli SK, Pantazis AA, Shah JS, et al. Diagnosis of left-ventricular non-compaction in patients with left-ventricular systolic dysfunction: time for a reappraisal of diagnostic criteria? *Eur Heart J* 2008;29:89-95.
2. Oechslin EN, Attenhofer Jost CH, Rojas JR, et al. Long-term follow-up of 34 adults with isolated left ventricular noncompaction: a distinct cardiomyopathy with poor prognosis. *J Am Coll Cardiol* 2000;36:493-500.
3. Ritter M, Oechslin E, Sütsch G, et al. Isolated noncompaction of the myocardium in adults. *Mayo Clin Proc* 1997;72:26-31.
4. Petersen SE, Selvanayagam JB, Wiesmann F, et al. Left ventricular non-compaction: insights from cardiovascular magnetic resonance imaging. *J Am Coll Cardiol* 2005;46:101-5.
5. Jacquier A, Thuny F, Jop B, et al. Measurement of trabeculated left ventricular mass using cardiac magnetic resonance imaging in the diagnosis of left ventricular non-compaction. *Eur Heart J* 2010;31:1098-104.
6. Captur G, Nihoyannopoulos P. Left ventricular non-compaction: genetic heterogeneity, diagnosis and clinical course. *Int J Cardiol* 2010;140:145-53.
7. Stähli BE, Gebhard C, Biaggi P, et al. Left ventricular non-compaction: prevalence in congenital heart disease. *Int J Cardiol* 2013;167:2477-81.
8. Kawel N, Nacif M, Arai AE, et al. Trabeculated (noncompacted) and compact myocardium in adults: the multi-ethnic study of atherosclerosis. *Circ Cardiovasc Imaging* 2012;5:357-66.

9. MESA Website. 2014. Available at: <http://www.mesa-nhlbi.org>. Accessed August 28, 2012.
10. Bild DE, Bluemke DA, Burke GL, et al. Multi-ethnic study of atherosclerosis: objectives and design. *Am J Epidemiol* 2002;156:871-81.
11. Bluemke DA, Kronmal RA, Lima JA, et al. The relationship of left ventricular mass and geometry to incident cardiovascular events: the MESA (Multi-Ethnic Study of Atherosclerosis) study. *J Am Coll Cardiol* 2008;52:2148-55.
12. Natori S, Lai S, Finn JP, et al. Cardiovascular function in multi-ethnic study of atherosclerosis: normal values by age, sex, and ethnicity. *AJR Am J Roentgenol* 2006;186:S357-65.
13. Liu CY, Liu YC, Wu C, et al. Evaluation of age-related interstitial myocardial fibrosis with cardiac magnetic resonance contrast-enhanced T1 mapping: MESA (Multi-Ethnic Study of Atherosclerosis). *J Am Coll Cardiol* 2013;62:1280-7.
14. Dawson DK, Maceira AM, Raj VJ, et al. Regional thicknesses and thickening of compacted and trabeculated myocardial layers of the normal left ventricle studied by cardiovascular magnetic resonance. *Circ Cardiovasc Imaging* 2011;4:139-46.
15. R Core Team. R: A language and environment for statistical computing. R Foundation for Statistical Computing, Vienna, Austria). 2013. Available at: <http://www.R-project.org/>. Accessed August 28, 2014.
16. Stanton C, Bruce C, Connolly H, et al. Isolated left ventricular noncompaction syndrome. *Am J Cardiol* 2009;104:1135-8.

17. Aras D, Tufekcioglu O, Ergun K, et al. Clinical features of isolated ventricular noncompaction in adults long-term clinical course, echocardiographic properties, and predictors of left ventricular failure. *J Card Fail* 2006;12:726-33.
18. Axel L. Papillary muscles do not attach directly to the solid heart wall. *Circulation* 2004;109:3145-8.
19. Bettari L, Borges-Neto S. Imaging surrogate end points in heart failure trials. *Heart Fail Clin* 2011;7:509-18.
20. Lipicky RJ, Packer M. Role of surrogate end points in the evaluation of drugs for heart failure. *J Am Coll Cardiol* 1993;22:179A-184A.
21. Anand IS, Florea VG, Fisher L. Surrogate end points in heart failure. *J Am Coll Cardiol* 2002;39:1414-21.
22. Wong M, Johnson G, Shabetai R, et al. Echocardiographic variables as prognostic indicators and therapeutic monitors in chronic congestive heart failure. Veterans Affairs cooperative studies V-HeFT I and II. V-HeFT VA Cooperative Studies Group. *Circulation* 1993;87:VI65-70.
23. Doughty RN, Whalley GA, Gamble G, et al. Left ventricular remodeling with carvedilol in patients with congestive heart failure due to ischemic heart disease. Australia-New Zealand Heart Failure Research Collaborative Group. *J Am Coll Cardiol* 1997;29:1060-6.
24. Petersen SE. CMR and LV noncompaction: does it matter how we measure trabeculations? *J Am Coll Cardiol Img* 2013;6:941-3.
25. Freedom RM, Yoo SJ, Perrin D, et al. The morphological spectrum of ventricular noncompaction. *Cardiol Young* 2005;15:345-64.

Figure Legends

Central Illustration. Changes over 9.5 year period in end-systolic volume index and ejection fraction.

The changes over this time period in end-systolic volume index and ejection fraction were not different between quintiles of maximal non-compaction to compaction ratio, even in subjects exceeding the current “normal value” (<2.3). The decrease in end-diastolic volume index was smaller with increasing extent of trabeculation; significant differences were seen between quintiles 1 and 4 ($p < 0.05$), between quintiles 1 and 5 ($p < 0.001$) and also between quintiles 2 and 5 ($p < 0.01$), but these changes are clinically insignificant.

EDVi – end-diastolic volume index, EF – ejection fraction, ESVi – end-systolic volume index, NC/C – non-compaction to compaction ratio

Figure 1. Flow Diagram of Exclusion Process

Exclusion criteria of subjects from the Multi-Ethnic Study of Atherosclerosis (MESA) for this study. CMR = cardiovascular magnetic resonance.

Figure 2. Measurement of NC/C Ratios

Example of an end-diastolic 4-chamber steady-state free precession image of a participant with very high maximal NC/C ratio (= 4.2) in the Multi-Ethnic Study of Atherosclerosis exam 5. Red arrows show measurements of compacted myocardium, yellow arrows represent measurements of the noncompacted (trabeculated) layer. NC/C = noncompaction to compaction.

Figure 3. Changes in Cardiac Volumes and Function

Changes in left ventricular (LV) volumes and function between MESA exam 1 and exam 5 and the relationship to the extent of LV trabeculation (in quintiles) at exam 5 presented in 2 ways: the bottom panel shows box and whisker plots and the lack of clinically relevant change in volume or function; the top panel shows similar slopes for the quintiles of trabeculation extent with regard to volumes and function between both exams. Boxes represent the interquartile range (IQR) and whiskers are within 1.5 *IQR. Outliers are plotted as points. The line within the box represents the median. NC/C = noncompaction to compaction. * $p < 0.05$; ** $p < 0.01$; *** $p < 0.001$

Table 1. Demographic and Cardiovascular Magnetic Resonance data at MESA exam 5

Subjects with the highest trabeculation (Quintile 5) had larger left ventricular volumes, end-diastolic mass index, and blood pressure values and lower incidence of treated diabetes, weight, and body mass index.

	All	Quintile 1 NC/C: 0 - 1.41	Quintile 2 NC/C: 1.42 - 1.71	Quintile 3 NC/C: 1.72 - 2.00	Quintile 4 2.01 - 2.45	Quintile 5 2.46 - 5.41
n =	2,742	549	548	548	548	549
Age	68.7 ± 9.1	69.1 ± 9.2	69.1 ± 9.3	68.6 ± 8.9	68.6 ± 9.0	68.0 ± 9.2
Females	1,435 (52.3%)	266 (48.5%)	286 (52.2%)	261 (47.6%)	304 (55.5%)	318 (57.9%)
Race						
<i>Caucasian</i>	1,154 (42.1%)	230 (41.9%)	242 (44.2%)	207 (37.8%)	238 (43.4%)	237 (43.2%)
<i>Chinese American</i>	343 (12.5%)	60 (10.9%)	75 (13.7%)	82 (15.0%)	69 (12.6%)	57 (10.4%)
<i>Black, African American</i>	682 (24.9%)	148 (27.0%)	141 (25.7%)	139 (25.4%)	131 (23.9%)	123 (22.4%)
<i>Hispanic</i>	563 (20.5%)	111 (20.2%)	90 (16.4%)	120 (21.9%)	110 (20.1%)	132 (24.0%)
Body mass index	27.9 ± 5.1	28.3 ± 5.2	28.1 ± 5.2	28.1 ± 5.3	28.0 ± 5.2	27.2 ± 4.7
Height (cm)	165.7 ± 9.8	166.0 ± 9.8	165.5 ± 9.5	165.7 ± 10.1	165.7 ± 10.0	165.5 ± 9.7

Weight (kg)	76.9 ± 16.5	78.0 ± 16.0	77.3 ± 17.1	77.5 ± 17.5	77.0 ± 16.5	74.8 ± 15.4
Hypertension	1546 (56.4%)	323 (58.8%)	326 (59.5%)	314 (57.3%)	305 (55.8%)	278 (50.6%)
Systolic blood pressure (mm Hg)	122.6 ± 20.0	123.7 ± 21.1	125.7 ± 20.8	122.9 ± 20.3	121.4 ± 19.0	119.4 ± 18.1
Diastolic blood pressure (mm Hg)	68.3 ± 9.9	69.0 ± 9.8	69.0 ± 10.4	68.8 ± 9.8	67.6 ± 9.7	67.0 ± 9.7
<i>Diabetes by 2003 ADA (n =2,613)</i>						
Normal	1,702 (62.5%)	337 (61.7%)	319 (58.5%)	329 (60.5%)	341 (62.5%)	376 (69.2%)
Impaired Fasting Glucose	564 (20.7%)	104 (19.0%)	122 (22.4%)	118 (21.7%)	118 (21.6%)	102 (18.8%)
Untreated Diabetes	35 (1.3%)	8 (1.5%)	7 (1.3%)	8 (1.5%)	5 (0.9%)	7 (1.3%)
Treated Diabetes	423 (15.5%)	97 (17.8%)	97 (17.8%)	89 (16.4%)	82 (15.0%)	58 (10.7%)
Family history of a heart attack	1127 (43.5%)	240 (46.2%)	226 (44.1%)	206 (39.9%)	243 (46.6%)	212 (40.8%)
Coronary disease	96 (3.5%)	27 (4.9%)	14 (2.6%)	15 (2.7%)	19 (3.5%)	21 (3.8%)
Smoking						

Never	1275 (46.7%)	242 (44.2%)	260 (47.7%)	262 (48.1%)	247 (45.2%)	264 (48.4%)
Former	1249 (45.7%)	260 (47.4%)	240 (44.0%)	245 (45.0%)	262 (47.9%)	242 (44.3%)
Current	207 (7.6%)	46 (8.4%)	45 (8.3%)	38 (7.0%)	38 (6.9%)	40 (7.3%)
Education						
<i>No school</i>	9 (0.3%)	3 (0.5%)	0	0	3 (0.5%)	3 (0.5%)
<i>Grades 1-8</i>	196 (7.2%)	39 (7.1%)	45 (8.2%)	38 (7.0%)	32 (5.9%)	42 (7.7%)
<i>Grades 9-11</i>	119 (4.3%)	26 (4.7%)	22 (4.0%)	31 (5.7%)	17 (3.1%)	23 (4.2%)
<i>Completed High School</i>	445 (16.3%)	87 (15.8%)	73 (13.4%)	98 (17.9%)	101 (18.5%)	86 (15.7%)
<i>Some College but no degree</i>	435 (15.9%)	84 (15.3%)	90 (16.5%)	92 (16.8%)	98 (17.9%)	71 (12.9%)
<i>Technical School Certificate</i>	203 (7.4%)	39 (7.1%)	44 (8.1%)	44 (8.1%)	40 (7.3%)	36 (6.6%)
<i>Associate Degree</i>	145 (5.3%)	26 (4.7%)	36 (6.6%)	26 (4.8%)	25 (4.6%)	32 (5.8%)
<i>Bachelor's Degree</i>	555 (20.3%)	116 (21.1%)	110 (21.1%)	95 (17.4%)	109 (19.9%)	125 (22.8%)
<i>Graduate or Professional School</i>	630 (23.0%)	129 (23.5%)	126 (23.1%)	122 (22.3%)	122 (22.3%)	131 (23.9%)

LV end-diastolic volume index (ml/m ²)	65.2 ± 13.6	62.4 ± 14.3	63.5 ± 13.4	65.7 ± 13.1	66.0 ± 13.3	68.3 ± 13.2
LV end-systolic volume index (ml/m ²)	25.0 ± 8.5	24.1 ± 9.3	23.9 ± 8.0	25.4 ± 8.6	25.5 ± 8.4	26.3 ± 8.0
LVEF (%)	62.0 ± 7.3	62 ± 7.4	62.8 ± 7.3	61.7 ± 7.8	61.7 ± 6.8	61.9 ± 7.0
LV mass index (g/m ²)	66.4 ± 13.8	68.1 ± 14.3	68.2 ± 14.9	67.3 ± 14.0	65.1 ± 12.8	63.1 ± 12.4

ADA = American Diabetes Association, LV = left ventricle, LVEF = left ventricular ejection fraction; NC/C = noncompaction to compaction ratio.

Table 2. Regression Models With Maximal NC/C Ratio, Demographic Data, CMR Data and Classic Risk Factors

Exposure variable	Outcome variables (change between exam 1 and exam 5)	Univariable regression		Multivariable regression					
				Model 1		Model 2		Model 3	
		Beta (95%CI)	R ²	Beta (95%CI)	R ²	Beta (95%CI)	R ²	Beta (95%CI)	R ²
Maximal NC/C ratio	End-diastolic volume index (ml/m ²)	1.6*** (0.9 to 2.3)	0.008	1.9*** (1.2 to 2.6)	0.03 4	2.7*** (2.1 to 3.3)	0.26 1	2.6*** (2.0 to 3.3)	0.26 9
	End-systolic volume index (ml/m ²)	0.3 (-0.1 to 0.8)	0.000 9	0.5* (0.1 to 0.9)	0.02 6	1.0*** (0.6 to 1.4)	0.19 5	1.0*** (0.6 to 1.4)	0.20 0
	EF (%)	0.4 (-0.1 to 0.8)	0.000 9	0.3 (-0.1 to 0.7)	0.01 3	-0.2 (-0.6 to 0.2)	0.32 4	-0.2 (-0.6 to 0.1)	0.32 0

Univariate and multivariate linear regression analysis models for the changes in the end-diastolic volume, end-diastolic volume index and ejection fraction (EF) between MESA exam 1 and 5 as dependent variables in models incorporating maximal NC/C ratio, demographic data, baseline CMR parameters at MESA exam 1 and traditional risk factors as predictor variables.

Model 1: adjusted for age, sex, and ethnicity. Model 2: adjusted for Model 1 parameters plus baseline EDVi (for change in EDVi), ESVi (for change in ESVi), and EF (for change in EF) Model 3: adjusted for Model 2 parameters plus diabetes, smoking history, total cholesterol, systolic blood pressure, and BMI. * p <0.05, ** p <0.01, *** p <0.001, 95%CI = 95% confidence intervals, EDVi = end-diastolic volume index, EF = ejection fraction, ESVi = end-systolic volume index, NC/C = noncompaction to compaction

Table 3. Cardiovascular adverse outcomes in relation to the extent LV trabeculations

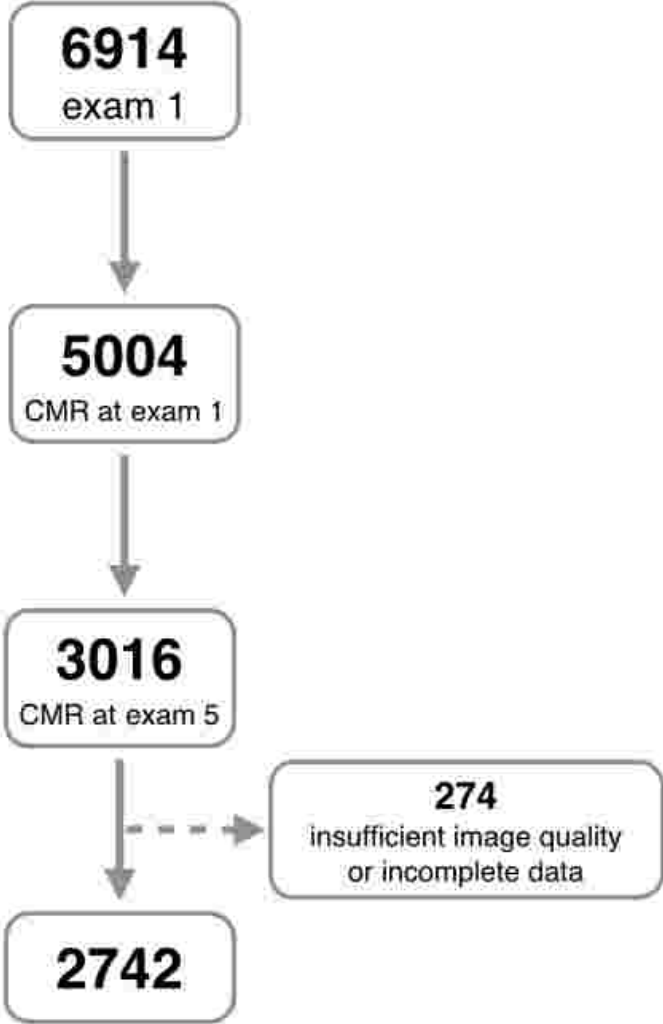
	All	Quintile 1	Quintile 2	Quintile 3	Quintile 4	Quintile 5
Atrial fibrillation	24	10 (1.9%)	7 (1.3%)	1 (0.2%)	3 (0.6%)	3 (0.6%)
Congestive heart failure	22	4 (0.7%)	5 (0.9%)	5 (0.9%)	4 (0.7%)	4 (0.7%)
Stroke	28	4 (0.7%)	8 (1.5%)	10 (1.9%)	2 (0.4%)	4 (0.7%)
Transient ischemic attack	17	4 (0.7%)	3 (0.6%)	4 (0.7%)	4 (0.7%)	2 (0.4%)
Myocardial infarction	41	15 (2.8%)	2 (0.4%)	8 (1.5%)	9 (1.7%)	7 (1.3%)
Hard cardiovascular endpoints	68	19 (3.6%)	10 (1.9%)	18 (3.4%)	11 (2.0%)	10 (1.9%)
All cardiovascular endpoints	121	31 (6.0%)	21 (4.0%)	25 (4.8%)	20 (3.8%)	24 (4.6%)

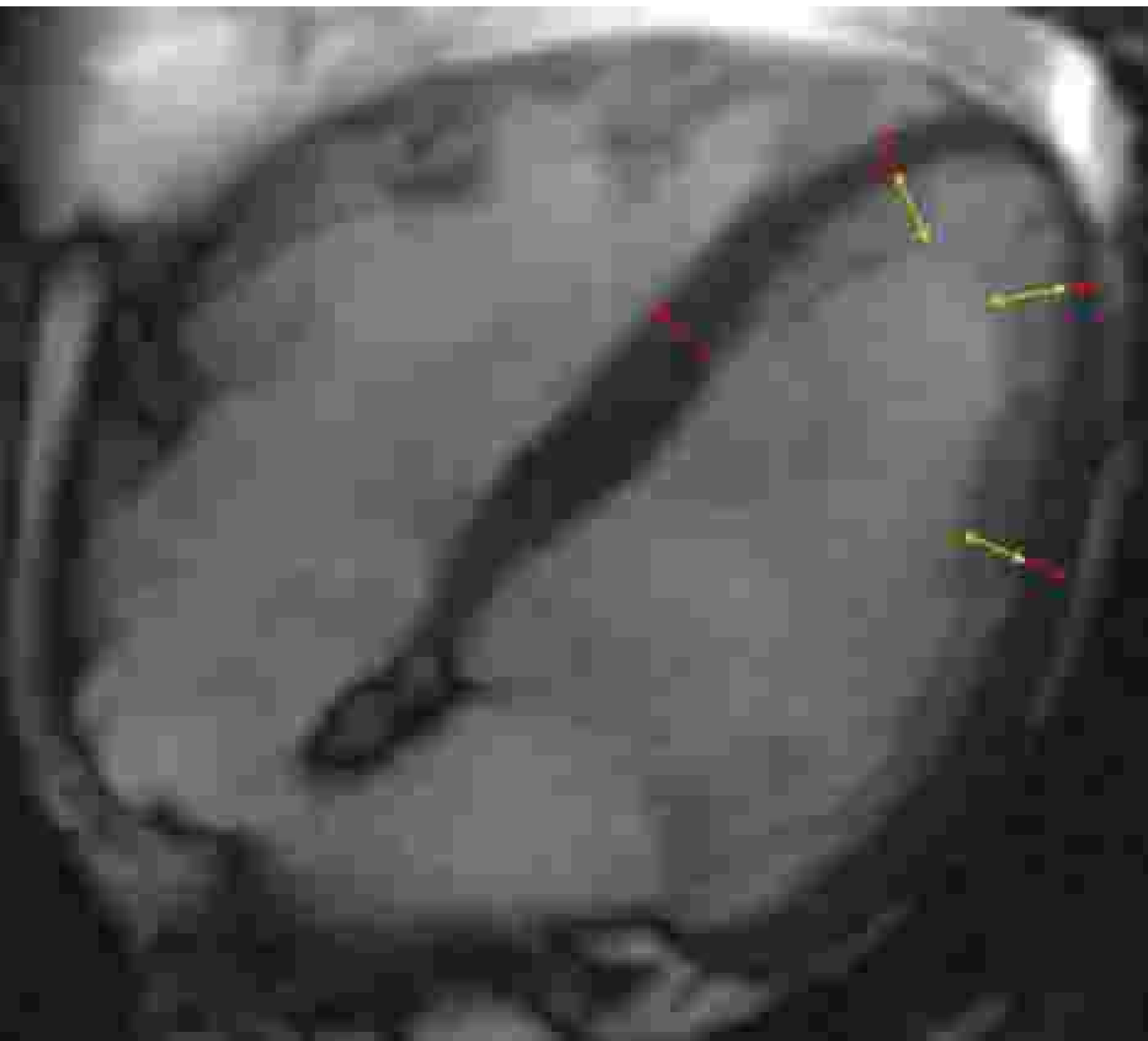
The incidence of cardiovascular adverse outcomes in the whole studied cohort and quintiles of maximal NC/C ratio are shown.

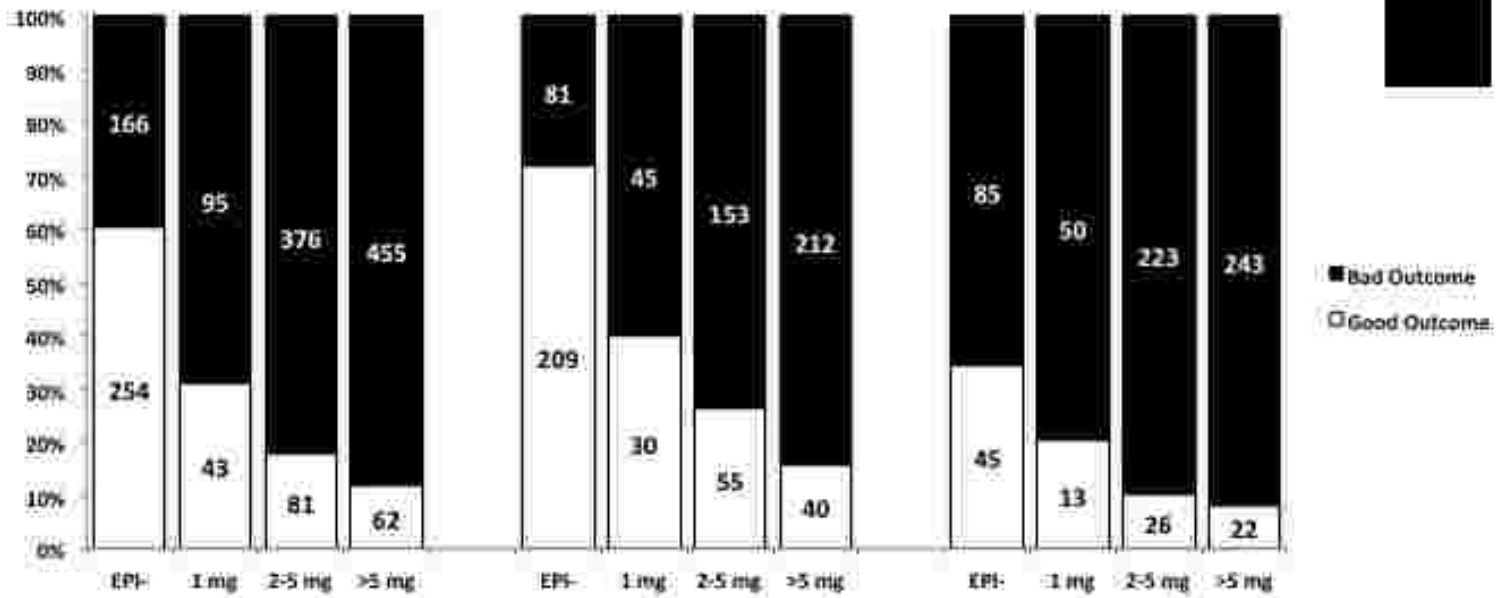
Hard cardiovascular endpoints include: myocardial infarction, resuscitated cardiac arrest, stroke

All cardiovascular endpoints include hard cardiovascular endpoints plus: definite angina, probable angina followed by coronary revascularization

EXTENT OF NC/C RATIO IN QUINTILES	Quintile 1 (0 to 1.41)	Quintile 2 (1.42 to 1.72)	Quintile 3 (1.73 to 2.01)	Quintile 4 (2.02 to 2.45)	Quintile 5 (2.46 to 5.41)	P
CHANGE IN ESVI (ML/M ²)	-1.3 ± 8.0	-2.1 ± 7.1	-1.4 ± 7.5	-0.9 ± 7.4	-1.0 ± 7.2	0.08
CHANGE IN EDVI (ML/M ²)	-6.5 ± 13.1	-6.0 ± 12.4	-5.1 ± 12.1	-4.4 ± 12.3	-3.6 ± 11.3	<0.001
CHANGE IN EF (%)	-1.4 ± 8.2	-0.1 ± 7.6	-0.4 ± 8.0	-0.8 ± 7.5	-0.3 ± 7.9	0.053







	Odds Ratio	Overall [95%CI]	p-value	Odds Ratio	Shockable [95%CI]	p-value	Odds Ratio	Non-Shockable [95%CI]	p-value
EPI-	1			1			1		
1 mg	0.48	[0.27-0.84]	0.01	0.38	[0.18-0.78]	0.008	0.60	[0.23-1.60]	0.31
2-5 mg	0.30	[0.20-0.47]	<0.001	0.25	[0.14-0.44]	<0.001	0.40	[0.19-0.84]	0.02
>5 mg	0.23	[0.14-0.37]	<0.001	0.16	[0.08-0.30]	<0.001	0.36	[0.16-0.82]	0.01



AMERICAN COLLEGE OF CARDIOLOGY FOUNDATION
AUTHOR RESPONSIBILITIES: RELATIONSHIP WITH INDUSTRY AND FINANCIAL DISCLOSURE

In addition to disclosing relationship with industry and/or financial disclosures on the *cover letter* and *title* page of your manuscript, we ask that each author sign this form.

To be published in the following journal (please check):

Journal of the American College of Cardiology(JACC) *JACC: Cardiovascular Interventions* *JACC: Cardiovascular Imaging* *JACC: Heart Failure*

Article entitled: The relationship of left ventricular trabeculation to ventricular function and structure over 9.5 years follow up: the Multi-Ethnic Study of Atherosclerosis

Manuscript number: JACC052314-1998

Corresponding Author: Prof. Petersen

Corresponding author's printed name: Steffen E. Petersen

***Corresponding Author's Responsibility**

To avoid delay in the publication of your manuscript, **complete and submit this form as quickly as possible.**

After you have submitted your electronic form, you will receive an email confirmation that includes a PDF copy. Please print and retain for your files. **If for some reason you are unable to complete this form electronically**, please contact the JACC office directly or print this form, fill in the spaces manually, and email, fax, or post mail a copy to:

Journal of the American College of Cardiology(JACC)

JACC: Cardiovascular Interventions

JACC: Cardiovascular Imaging

JACC: Heart Failure

Heart House, 2400 N Street NW, Washington, DC, 20037

Fax: (202) 375-6819

Email: jaccsd@acc.org jaccint@acc.org jaccimg@acc.org jacchf@acc.org

Complete the section below, type your name into the Type Name box and input the date. *By submitting this form, you attest to being an author on the paper.*

Type Name: Filip Zemrak Date: 06/12/2014

Title and Company (if employer representative):

I have **no relationship with industry** to disclose.

I have **no financial information** to disclose.

local_p_id: 371972

time: 1402602726

ip address: 82.80.150.148



AMERICAN COLLEGE OF CARDIOLOGY FOUNDATION
AUTHOR RESPONSIBILITIES: RELATIONSHIP WITH INDUSTRY AND FINANCIAL DISCLOSURE

In addition to disclosing relationship with industry and/or financial disclosures on the *cover letter* and *title* page of your manuscript, we ask that each author sign this form.

To be published in the following journal (please check):

Journal of the American College of Cardiology(JACC) *JACC: Cardiovascular Interventions* *JACC: Cardiovascular Imaging* *JACC: Heart Failure*

Article entitled: The relationship of left ventricular trabeculation to ventricular function and structure over 9.5 years follow up: the Multi-Ethnic Study of Atherosclerosis

Manuscript number: JACC052314-1998

Corresponding Author: Prof. Petersen

Corresponding author's printed name: Steffen Petersen

***Corresponding Author's Responsibility**

To avoid delay in the publication of your manuscript, **complete and submit this form as quickly as possible.**

After you have submitted your electronic form, you will receive an email confirmation that includes a PDF copy. Please print and retain for your files. **If for some reason you are unable to complete this form electronically**, please contact the JACC office directly or print this form, fill in the spaces manually, and email, fax, or post mail a copy to:

Journal of the American College of Cardiology(JACC)

JACC: Cardiovascular Interventions

JACC: Cardiovascular Imaging

JACC: Heart Failure

Heart House, 2400 N Street NW, Washington, DC, 20037

Fax: (202) 375-6819

Email: jaccsd@acc.org jaccint@acc.org jaccimg@acc.org jacchf@acc.org

Complete the section below, type your name into the Type Name box and input the date. *By submitting this form, you attest to being an author on the paper.*

Type Name: Mark A. Ahlman Date: June 12, 2014

Title and Company (if employer representative): National Institutes of Health

I have **no relationship with industry** to disclose.

I have **no financial information** to disclose.

local_p_id: 372051

time: 1402601187

ip address: 137.187.244.126



AMERICAN COLLEGE OF CARDIOLOGY FOUNDATION
AUTHOR RESPONSIBILITIES: RELATIONSHIP WITH INDUSTRY AND FINANCIAL DISCLOSURE

In addition to disclosing relationship with industry and/or financial disclosures on the *cover letter* and *title* page of your manuscript, we ask that each author sign this form.

To be published in the following journal (please check):

Journal of the American College of Cardiology(JACC) *JACC: Cardiovascular Interventions* *JACC: Cardiovascular Imaging* *JACC: Heart Failure*

Article entitled: The relationship of left ventricular trabeculation to ventricular function and structure over 9.5 years follow up: the Multi-Ethnic Study of Atherosclerosis

Manuscript number: JACC052314-1998

Corresponding Author: Prof. Petersen

Corresponding author's printed name: Steffen Petersen

***Corresponding Author's Responsibility**

To avoid delay in the publication of your manuscript, **complete and submit this form as quickly as possible.**

After you have submitted your electronic form, you will receive an email confirmation that includes a PDF copy. Please print and retain for your files. **If for some reason you are unable to complete this form electronically**, please contact the JACC office directly or print this form, fill in the spaces manually, and email, fax, or post mail a copy to:

Journal of the American College of Cardiology(JACC)

JACC: Cardiovascular Interventions

JACC: Cardiovascular Imaging

JACC: Heart Failure

Heart House, 2400 N Street NW, Washington, DC, 20037

Fax: (202) 375-6819

Email: jaccsd@acc.org jaccint@acc.org jaccimg@acc.org jacchf@acc.org

Complete the section below, type your name into the Type Name box and input the date. *By submitting this form, you attest to being an author on the paper.*

Type Name: Gabriella Captur Date: 13th June 2014

Title and Company (if employer representative):

I have **no relationship with industry** to disclose.

I have **no financial information** to disclose.

local_p_id: 337629

time: 1402620117

ip address: 87.213.30.114



AMERICAN COLLEGE OF CARDIOLOGY FOUNDATION
AUTHOR RESPONSIBILITIES: RELATIONSHIP WITH INDUSTRY AND FINANCIAL DISCLOSURE

In addition to disclosing relationship with industry and/or financial disclosures on the *cover letter* and *title* page of your manuscript, we ask that each author sign this form.

To be published in the following journal (please check):

Journal of the American College of Cardiology(JACC) *JACC: Cardiovascular Interventions* *JACC: Cardiovascular Imaging* *JACC: Heart Failure*

Article entitled: The relationship of left ventricular trabeculation to ventricular function and structure over 9.5 years follow up: the Multi-Ethnic Study of Atherosclerosis

Manuscript number: JACC052314-1998

Corresponding Author: Prof. Petersen

Corresponding author's printed name: Steffen Petersen

***Corresponding Author's Responsibility**

To avoid delay in the publication of your manuscript, **complete and submit this form as quickly as possible.**

After you have submitted your electronic form, you will receive an email confirmation that includes a PDF copy. Please print and retain for your files. **If for some reason you are unable to complete this form electronically**, please contact the JACC office directly or print this form, fill in the spaces manually, and email, fax, or post mail a copy to:

Journal of the American College of Cardiology(JACC)

JACC: Cardiovascular Interventions

JACC: Cardiovascular Imaging

JACC: Heart Failure

Heart House, 2400 N Street NW, Washington, DC, 20037

Fax: (202) 375-6819

Email: jaccsd@acc.org jaccint@acc.org jaccimg@acc.org jacchf@acc.org

Complete the section below, type your name into the Type Name box and input the date. *By submitting this form, you attest to being an author on the paper.*

Type Name: Saidi Mohiddin Date: 16/06/2014

Title and Company (if employer representative): Queen Mary University of London

I have **no relationship with industry** to disclose.

I have **no financial information** to disclose.

local_p_id: 258108

time: 1402926966

ip address: 212.49.245.233



AMERICAN COLLEGE OF CARDIOLOGY FOUNDATION
AUTHOR RESPONSIBILITIES: RELATIONSHIP WITH INDUSTRY AND FINANCIAL DISCLOSURE

In addition to disclosing relationship with industry and/or financial disclosures on the *cover letter* and *title* page of your manuscript, we ask that each author sign this form.

To be published in the following journal (please check):

Journal of the American College of Cardiology(JACC) *JACC: Cardiovascular Interventions* *JACC: Cardiovascular Imaging* *JACC: Heart Failure*

Article entitled: The relationship of left ventricular trabeculation to ventricular function and structure over 9.5 years follow up: the Multi-Ethnic Study of Atherosclerosis

Manuscript number: JACC052314-1998

Corresponding Author: Prof. Petersen

Corresponding author's printed name: Nadine Kawel-Boehm

***Corresponding Author's Responsibility**

To avoid delay in the publication of your manuscript, **complete and submit this form as quickly as possible.**

After you have submitted your electronic form, you will receive an email confirmation that includes a PDF copy. Please print and retain for your files. **If for some reason you are unable to complete this form electronically**, please contact the JACC office directly or print this form, fill in the spaces manually, and email, fax, or post mail a copy to:

Journal of the American College of Cardiology(JACC)

JACC: Cardiovascular Interventions

JACC: Cardiovascular Imaging

JACC: Heart Failure

Heart House, 2400 N Street NW, Washington, DC, 20037

Fax: (202) 375-6819

Email: jaccsd@acc.org jaccint@acc.org jaccimg@acc.org jacchf@acc.org

Complete the section below, type your name into the Type Name box and input the date. *By submitting this form, you attest to being an author on the paper.*

Type Name: Nadine Kawel-Boehm Date: 06/15/2014

Title and Company (if employer representative): MD

I have **no relationship with industry** to disclose.

I have **no financial information** to disclose.

local_p_id: 308405

time: 1402818861

ip address: 188.60.210.111



AMERICAN COLLEGE OF CARDIOLOGY FOUNDATION
AUTHOR RESPONSIBILITIES: RELATIONSHIP WITH INDUSTRY AND FINANCIAL DISCLOSURE

In addition to disclosing relationship with industry and/or financial disclosures on the *cover letter* and *title* page of your manuscript, we ask that each author sign this form.

To be published in the following journal (please check):

Journal of the American College of Cardiology(JACC) *JACC: Cardiovascular Interventions* *JACC: Cardiovascular Imaging* *JACC: Heart Failure*

Article entitled: The relationship of left ventricular trabeculation to ventricular function and structure over 9.5 years follow up: the Multi-Ethnic Study of Atherosclerosis

Manuscript number: JACC052314-1998

Corresponding Author: Prof. Petersen

Corresponding author's printed name: Steffen Petersen

***Corresponding Author's Responsibility**

To avoid delay in the publication of your manuscript, **complete and submit this form as quickly as possible.**

After you have submitted your electronic form, you will receive an email confirmation that includes a PDF copy. Please print and retain for your files. **If for some reason you are unable to complete this form electronically**, please contact the JACC office directly or print this form, fill in the spaces manually, and email, fax, or post mail a copy to:

Journal of the American College of Cardiology(JACC)
JACC: Cardiovascular Interventions
JACC: Cardiovascular Imaging
JACC: Heart Failure
Heart House, 2400 N Street NW, Washington, DC, 20037
Fax: (202) 375-6819
Email: jaccsd@acc.org jaccint@acc.org jaccimg@acc.org jacchf@acc.org

Complete the section below, type your name into the Type Name box and input the date. *By submitting this form, you attest to being an author on the paper.*

Type Name: Martin R. Prince Date: 6/13/14

Title and Company (if employer representative):

I have **no relationship with industry** to disclose.

I have **financial information** to disclose.

1. Type **financial information** to disclose: Martin Prince has patent agreements with GE, Siemens, Philips, Toshiba, Hitachi, Bayer, Bracco, Medrad, Mallinckrodt, Nemoto and Lantheus

local_p_id: 162582

time: 1402675778

ip address: 140.251.55.54



AMERICAN COLLEGE OF CARDIOLOGY FOUNDATION
AUTHOR RESPONSIBILITIES: RELATIONSHIP WITH INDUSTRY AND FINANCIAL DISCLOSURE

In addition to disclosing relationship with industry and/or financial disclosures on the *cover letter* and *title* page of your manuscript, we ask that each author sign this form.

To be published in the following journal (please check):

Journal of the American College of Cardiology(JACC) *JACC: Cardiovascular Interventions* *JACC: Cardiovascular Imaging* *JACC: Heart Failure*

Article entitled: The relationship of left ventricular trabeculation to ventricular function and structure over 9.5 years follow up: the Multi-Ethnic Study of Atherosclerosis

Manuscript number: JACC052314-1998

Corresponding Author: Prof. Petersen

Corresponding author's printed name: Filip zemrak

***Corresponding Author's Responsibility**

To avoid delay in the publication of your manuscript, **complete and submit this form as quickly as possible.**

After you have submitted your electronic form, you will receive an email confirmation that includes a PDF copy. Please print and retain for your files. **If for some reason you are unable to complete this form electronically**, please contact the JACC office directly or print this form, fill in the spaces manually, and email, fax, or post mail a copy to:

Journal of the American College of Cardiology(JACC)

JACC: Cardiovascular Interventions

JACC: Cardiovascular Imaging

JACC: Heart Failure

Heart House, 2400 N Street NW, Washington, DC, 20037

Fax: (202) 375-6819

Email: jaccsd@acc.org jaccint@acc.org jaccimg@acc.org jacchf@acc.org

Complete the section below, type your name into the Type Name box and input the date. *By submitting this form, you attest to being an author on the paper.*

Type Name: James moon Date: 13 June 2014

Title and Company (if employer representative):

I have **no relationship with industry** to disclose.

I have **no financial information** to disclose.

local_p_id: 44722

time: 1402615598

ip address: 1.209.104.3



AMERICAN COLLEGE OF CARDIOLOGY FOUNDATION
AUTHOR RESPONSIBILITIES: RELATIONSHIP WITH INDUSTRY AND FINANCIAL DISCLOSURE

In addition to disclosing relationship with industry and/or financial disclosures on the *cover letter* and *title* page of your manuscript, we ask that each author sign this form.

To be published in the following journal (please check):

Journal of the American College of Cardiology(JACC) *JACC: Cardiovascular Interventions* *JACC: Cardiovascular Imaging* *JACC: Heart Failure*

Article entitled: The relationship of left ventricular trabeculation to ventricular function and structure over 9.5 years follow up: the Multi-Ethnic Study of Atherosclerosis

Manuscript number: JACC052314-1998

Corresponding Author: Prof. Petersen

Corresponding author's printed name: Petersen

***Corresponding Author's Responsibility**

To avoid delay in the publication of your manuscript, **complete and submit this form as quickly as possible.**

After you have submitted your electronic form, you will receive an email confirmation that includes a PDF copy. Please print and retain for your files. **If for some reason you are unable to complete this form electronically**, please contact the JACC office directly or print this form, fill in the spaces manually, and email, fax, or post mail a copy to:

Journal of the American College of Cardiology(JACC)

JACC: Cardiovascular Interventions

JACC: Cardiovascular Imaging

JACC: Heart Failure

Heart House, 2400 N Street NW, Washington, DC, 20037

Fax: (202) 375-6819

Email: jaccsd@acc.org jaccint@acc.org jaccimg@acc.org jacchf@acc.org

Complete the section below, type your name into the Type Name box and input the date. *By submitting this form, you attest to being an author on the paper.*

Type Name: Greg Hundley Date: 6/12/2014

Title and Company (if employer representative):

I have **no relationship with industry** to disclose.

I have **no financial information** to disclose.

local_p_id: 368414

time: 1402604765

ip address: 152.11.189.9



AMERICAN COLLEGE OF CARDIOLOGY FOUNDATION
AUTHOR RESPONSIBILITIES: RELATIONSHIP WITH INDUSTRY AND FINANCIAL DISCLOSURE

In addition to disclosing relationship with industry and/or financial disclosures on the *cover letter* and *title* page of your manuscript, we ask that each author sign this form.

To be published in the following journal (please check):

Journal of the American College of Cardiology(JACC) *JACC: Cardiovascular Interventions* *JACC: Cardiovascular Imaging* *JACC: Heart Failure*

Article entitled: The relationship of left ventricular trabeculation to ventricular function and structure over 9.5 years follow up: the Multi-Ethnic Study of Atherosclerosis

Manuscript number: JACC052314-1998

Corresponding Author: Prof. Petersen

Corresponding author's printed name: Prof Petersen

***Corresponding Author's Responsibility**

To avoid delay in the publication of your manuscript, **complete and submit this form as quickly as possible.**

After you have submitted your electronic form, you will receive an email confirmation that includes a PDF copy. Please print and retain for your files. **If for some reason you are unable to complete this form electronically**, please contact the JACC office directly or print this form, fill in the spaces manually, and email, fax, or post mail a copy to:

Journal of the American College of Cardiology(JACC)

JACC: Cardiovascular Interventions

JACC: Cardiovascular Imaging

JACC: Heart Failure

Heart House, 2400 N Street NW, Washington, DC, 20037

Fax: (202) 375-6819

Email: jaccsd@acc.org jaccint@acc.org jaccimg@acc.org jacchf@acc.org

Complete the section below, type your name into the Type Name box and input the date. *By submitting this form, you attest to being an author on the paper.*

Type Name: Joao Lima Date: 6/12/14

Title and Company (if employer representative):

I have **no relationship with industry** to disclose.

I have **no financial information** to disclose.

local_p_id: 2925

time: 1402601600

ip address: 162.129.251.22



AMERICAN COLLEGE OF CARDIOLOGY FOUNDATION
AUTHOR RESPONSIBILITIES: RELATIONSHIP WITH INDUSTRY AND FINANCIAL DISCLOSURE

In addition to disclosing relationship with industry and/or financial disclosures on the *cover letter* and *title* page of your manuscript, we ask that each author sign this form.

To be published in the following journal (please check):

Journal of the American College of Cardiology(JACC) *JACC: Cardiovascular Interventions* *JACC: Cardiovascular Imaging* *JACC: Heart Failure*

Article entitled: The relationship of left ventricular trabeculation to ventricular function and structure over 9.5 years follow up: the Multi-Ethnic Study of Atherosclerosis

Manuscript number: JACC052314-1998

Corresponding Author: Prof. Petersen

Corresponding author's printed name: Steffen Petersen

***Corresponding Author's Responsibility**

To avoid delay in the publication of your manuscript, **complete and submit this form as quickly as possible.**

After you have submitted your electronic form, you will receive an email confirmation that includes a PDF copy. Please print and retain for your files. **If for some reason you are unable to complete this form electronically**, please contact the JACC office directly or print this form, fill in the spaces manually, and email, fax, or post mail a copy to:

Journal of the American College of Cardiology(JACC)

JACC: Cardiovascular Interventions

JACC: Cardiovascular Imaging

JACC: Heart Failure

Heart House, 2400 N Street NW, Washington, DC, 20037

Fax: (202) 375-6819

Email: jaccsd@acc.org jaccint@acc.org jaccimg@acc.org jacchf@acc.org

Complete the section below, type your name into the Type Name box and input the date. *By submitting this form, you attest to being an author on the paper.*

Type Name: David Bluemke Date: 6-12-14

Title and Company (if employer representative):

I have **no relationship with industry** to disclose.

I have **no financial information** to disclose.

local_p_id: 59639

time: 1402601347

ip address: 137.187.245.107



**AMERICAN COLLEGE OF CARDIOLOGY FOUNDATION
CORRESPONDING AUTHOR RESPONSIBILITY AND COPYRIGHT TRANSFER
AGREEMENT**

Journal Journal of the American College of Cardiology
Manuscript # JACC052314-1998
Title The relationship of left ventricular trabeculation to ventricular function and structure over 9.5 years follow up: the Multi-Ethnic Study of Atherosclerosis
Authors Filip Zemrak, Mark Ahlman, Gabriella Captur, Saidi Mohiddin, Nadine Kawel-Boehm, Martin Prince, James Moon, Gregory Hundley, Joao Lima, David Bluemke, and Steffen Petersen
Date June 18, 2014 07:16 GMT
IP Address 144.82.96.145

Journal publishers and authors share a common interest in the protection of copyright: authors principally because they want their creative works to be protected from plagiarism and other unlawful uses, publishers because they need to protect their work and investment in the production, marketing and distribution of the published version of the article. In order to do so effectively, publishers request a formal written transfer of copyright from the author(s) for each article published. Publishers and authors are also concerned that the integrity of the official record of publication of an article (once refereed and published) be maintained, and in order to protect that reference value and validation process, we ask that authors recognize that distribution (including through the Internet/WWW or other on-line means) of the authoritative version of the article as published is best administered by the Publisher.

To avoid any delay in the publication of your image, please read the terms of this agreement, complete all required information, and electronically submit your form as quickly as possible.

***For corresponding author only**

- I will obtain written permission from all individuals who are listed in the Acknowledgment section of the manuscript because readers may infer their endorsement of data and conclusions.
(**Acknowledgments no longer need to be sent to the Editorial Office.**)

I certify that:

1. All persons who have made substantial contributions in the manuscript (e.g., data collection, analysis, or writing or editing assistance), but who do not fulfill authorship criteria, are named with their specific contributions in the Acknowledgment section of the manuscript;
2. All persons named in the Acknowledgment section have provided the corresponding author with written permission to be named in the manuscript; and
3. If an Acknowledgment section is not included, no other persons have made substantial contributions to the manuscript.

Corresponding Author's Name: Steffen E Petersen

To be published in the following journal (please check):

Journal of the American College of Cardiology (JACC) *JACC: Cardiovascular Interventions* *JACC: Cardiovascular Imaging* *JACC: Heart Failure*

Article entitled: The relationship of left ventricular trabeculation to ventricular function and structure over 9.5 years follow up: the Multi-Ethnic Study of Atherosclerosis

Manuscript number: JACC052314-1998

Corresponding author's printed name: Prof. Petersen
First author's printed name: Filip Zemrak

I hereby assign to the American College of Cardiology Foundation the copyright in the manuscript identified above and any supplemental tables, illustrations or other information submitted therewith (the "article") in all forms and media (whether now known or hereafter developed), throughout the world, in all languages, for the full term of copyright and all extensions and renewals thereof, effective when and if the article is accepted for publication. This transfer includes the right to adapt the presentation of the article for use in conjunction with computer systems and programs, including reproduction or publication in machine-readable form and incorporation in electronic retrieval systems.

Authors retain or are hereby granted (without the need to obtain further permission) rights to use the article for traditional scholarship communications, for teaching, and for distribution within their institution, as set out in the General Terms of Publication (see note 1), and also agree to the other terms.

- I am the sole author of the manuscript
- I am one author signing on behalf of all co-authors of the manuscript
- The manuscript is a 'work made for hire' and I am signing as an authorized representative of the employing company
- I am a US Government employee and there is no copyright to transfer but I affirm the author warranties (see notes 3 & 4)
- I am a co-author who is not a US Government employee but whose co-authors are government employees (see note 4)
- I am an employee of the UK
- Canadian or Australian Government claiming Crown Copyright but I affirm the author warranties (see note 5)
- I am a co-author who is not claiming Crown Copyright but whose co-authors are employees of the UK
- Canadian or Australian Government (see note 5)

FUNDING

- The underlying research reported in the article was funded by the US National Institute of Health**
- The underlying research reported in the article was performed by a Howard Hughes Medical Institute investigator**

Elsevier will automatically submit your paper to PubMed Central if the research was funded by the NIH (as indicated by checking the appropriate box above)

Please mark **one or more** of the above boxes (as appropriate) and then input your name and date.

Type Name: Steffen E Petersen

Title and Company (if employer representative): Professor at Queen Mary of University of London

Date: 06/18/2014

Data Protection: By submitting this form you are consenting that the personal information provided herein may be used by the American College of Cardiology Foundation, Elsevier, and its affiliated companies worldwide to contact you concerning the publishing of your article and occasionally for marketing purposes. We respect your privacy. If you **do** not wish to receive news, promotions and special offers about our products and services, then please mark this box. See also the Elsevier website at <http://www.elsevier.com> and click *Privacy Policy*.

Please complete this electronic file by filling out all required criteria and clicking the "Submit" button at the bottom of this page. You will receive a PDF version of your completed electronic form via email. Please print this copy and retain for your files.

General Terms of Publication

1. As an author you (or your employer or institution) may do the following:

- make copies (print or electronic) of the article for your own personal use, including for your own classroom teaching use;
- make copies and distribute such copies (including through e-mail) of the article to research colleagues, for the personal use by such colleagues (but not commercially or systematically, e.g. via an e-mail list or list server);
- post a pre-print version of the article on Internet websites including electronic pre-print servers, and to retain indefinitely such version on such servers or sites;
- post a revised personal version of the final text of the article (to reflect changes made in the peer review and editing process) on your personal or institutional website or server, with a link to the journal homepage (on elsevier.com);
- present the article at a meeting or conference and to distribute copies of the article to the delegates attending such meeting;
- for your employer, if the article is a 'work for hire', made within the scope of your employment, your employer may use all or part of the information in the article for other intra-company use (e.g. training);
- retain patent and trademark rights and rights to any process or procedure described in the article;
- include the article in full or in part in a thesis or dissertation (provided that this is not to be published commercially);
- use the article or any part thereof in a printed compilation of your works, such as collected writings or lecture notes (subsequent to publication of the article in the journal); and
- prepare other derivative works, to extend the article into book-length form, or to otherwise re-use portions or excerpts in other works, with full acknowledgement of its original publication in the journal.

All copies, print or electronic, or other use of the paper or article must include the appropriate bibliographic citation for the article's publication in the journal.

• Requests from third parties

Requests for all uses not included above, including the authorization of third parties to reproduce or otherwise use all or part of the article (including figures and tables), should be referred to the Elsevier Global Rights Department by going to our website at <http://www.elsevier.com/locate/permissions> and selecting 'Permissions'.

• Author warranties

- The article you have submitted to the journal for review is original, has been written by the stated authors and has not been published elsewhere.
- The article is not currently being considered for publication by any other journal and will not be submitted for such review while under review by the journal.
- The article contains no libellous or other unlawful statements and does not contain any materials that violate any personal or proprietary rights of any other person or entity.
- You have obtained written permission from copyright owners for any excerpts from copyrighted works that are included and have credited the sources in your article.

- If the article was prepared jointly with other authors, you have informed the co-author(s) of the terms of this copyright transfer and that you are signing on their behalf as their agent, and represent that you are authorized to do so.

- **US Government employees**

- If all co-authors are US Government employees there is no copyright to transfer. Please sign the form, to confirm the author warranties.
- If there is a number of co-authors, of which at least one is a US Government employee (and this work was prepared in such capacity) and at least one is not a government employee, the non-government author should sign this form, indicating transfer of those rights which such author has (also on behalf of any other non-government co-authors).

- **Crown Copyright**

- UK Government employee authors may elect to transfer copyright.
- UK Government employees wishing to claim Crown Copyright should mark the appropriate box overleaf, sign the form to affirm the author warranties and attach the completed authorization form as per HMSO guidelines at <http://www.hmso.gov.uk/copyright/guidance/articles/htm>.
- The work of Canadian or Australian Government employees is automatically subject to Crown Copyright. Please mark the appropriate box and sign the form to affirm the author warranties.
- If there is a number of co-authors, of which at least one is claiming Crown Copyright and at least one is not an employee of the UK, Canadian or Australian Government, the non-government author should sign this form, indicating transfer of those rights which such author has (also on behalf of any other non-government co-authors).

- **Elsevier's AiP (Articles in Press) service**

Elsevier may choose to publish an abstract or portions of the paper before we publish it in the journal. Please contact our Production department immediately if you do not want us to make any such prior publication for any reason, including disclosure of a patentable invention.

***If you have checked a box indicating that you are NOT signing on behalf of all co-authors on the manuscript, the Editorial Office will be in contact to collect the remaining signatures. If you checked the box indicating that you are signing on behalf of all co-authors, please complete this form and submit. Nothing further will be needed.**

- I am not signing on behalf of all co-authors of the manuscript.
- I am one author signing on behalf of all co-authors of the manuscript.

Name(printed): Steffen E Petersen

Title (if employer representative): Professor at Queen Mary University of London **Date:** 06/18/2014

local_p_id: 88978

time: 1403076273

ip address: 144.82.96.145



AMERICAN COLLEGE OF CARDIOLOGY FOUNDATION
AUTHOR RESPONSIBILITIES: RELATIONSHIP WITH INDUSTRY AND FINANCIAL DISCLOSURE

In addition to disclosing relationship with industry and/or financial disclosures on the *cover letter* and *title* page of your manuscript, we ask that each author sign this form.

To be published in the following journal (please check):

Journal of the American College of Cardiology(JACC) *JACC: Cardiovascular Interventions* *JACC: Cardiovascular Imaging* *JACC: Heart Failure*

Article entitled: The relationship of left ventricular trabeculation to ventricular function and structure over 9.5 years follow up: the Multi-Ethnic Study of Atherosclerosis

Manuscript number: JACC052314-1998

Corresponding Author: Prof. Petersen

Corresponding author's printed name: PETERSEN

***Corresponding Author's Responsibility**

To avoid delay in the publication of your manuscript, **complete and submit this form as quickly as possible.**

After you have submitted your electronic form, you will receive an email confirmation that includes a PDF copy. Please print and retain for your files. **If for some reason you are unable to complete this form electronically**, please contact the JACC office directly or print this form, fill in the spaces manually, and email, fax, or post mail a copy to:

Journal of the American College of Cardiology(JACC)

JACC: Cardiovascular Interventions

JACC: Cardiovascular Imaging

JACC: Heart Failure

Heart House, 2400 N Street NW, Washington, DC, 20037

Fax: (202) 375-6819

Email: jaccsd@acc.org jaccint@acc.org jaccimg@acc.org jacchf@acc.org

Complete the section below, type your name into the Type Name box and input the date. *By submitting this form, you attest to being an author on the paper.*

Type Name: Steffen Petersen Date: 13/6/2014

Title and Company (if employer representative): Professor of Cardiovascular Medicine, Queen Mary University of London

I have **relationship with industry** to disclose.

1. Type **relationship with industry** to disclose: Consultancy

I have **no financial information** to disclose.

local_p_id: 88978

time: 1402644869

ip address: 50.31.252.204