



Italian social psychiatry research: What gets published in peer reviewed journals?

Galeazzi, GM; Priebe, S

For additional information about this publication click this link.

<http://qmro.qmul.ac.uk/jspui/handle/123456789/1152>

Information about this research object was correct at the time of download; we occasionally make corrections to records, please therefore check the published record when citing. For more information contact scholarlycommunications@qmul.ac.uk

Italian social psychiatry research: What gets published in peer reviewed journals?

GIAN MARIA GALEAZZI¹ e STEFAN PRIEBE²

¹East London & the City University NHS Mental Health Trust, London (United Kingdom)

²Queen Mary University of London, London (United Kingdom)

SUMMARY. **Aims** – To explore the current state of Italian social psychiatry research as evidenced by original papers published in peer-reviewed journals 2004-2006. **Methods** – Electronic databases and hand searches of leading peer-reviewed journals were used to identify original research papers published in 2004-2006, addressing a social psychiatric issue, having at least one Italian author, and reporting data from Italian samples. **Results** – A total of 174 papers were identified. A substantial proportion reported findings of international collaborative research. Quantitative methods dominated, with 86 papers on cross-sectional surveys. Only 18 papers showed results of intervention trials with pre and post measures. Most common target group were psychiatric patients in community mental health services which featured in 93 papers. **Conclusions** – There is a critical mass of Italian social psychiatry research, dominated by a few research centres and with considerable amount of international collaboration. The findings of this survey might reflect the relative shortage of national funding for social psychiatry research.

Declaration of Interest: None.

KEY WORDS: social psychiatry, Italy, bibliometrics.

Received 13.04.2007 – Final version received 08.05.2007 – Accepted on 11.05.2007.

INTRODUCTION

Italy has been widely regarded as one of the driving countries for mental health reforms and de-institutionalisation in Europe. The law 180 is still seen as a significant milestone of reforms towards community mental health care in the western world (de Girolamo *et al.*, 2007).

The law 180 and subsequent reforms were based on a new ideology and pushed through by a sufficient political will. They were based on values and visions about how good mental health care should function. Since the 1970s, the situation has somewhat changed. In particular, we have entered the era of evidence based mental health care, and there is an expectation that future service development will be influenced by research evidence.

Research in this area is applied rather than fundamental research. It has to take into account specific national

traditions and features of the given health and social care system. Thus, there is a challenge to the national scientific community to provide research findings in social psychiatry which may - directly or in-directly - benefit mental health care in Italy.

Inspired by similar analyses of German social psychiatry research conducted by Angermeyer and his group some years ago (Angermeyer & Winkler, 2001; Holzinger & Angermeyer, 2002; 2003), we therefore aimed to explore the current state of social psychiatry research in Italy. This issue can be addressed from various methodological angles, and our approach was to review original research papers in the area published in peer-reviewed journals between 2004 and 2006. This timeframe was chosen to assess the most recent publication output and obtain a comprehensive picture without including too large a number of papers so that the review remained manageable. The review specifically focused on a) the topics covered by the research, b) the type of methods used, and c) the institutional origin of the publications.

METHODS

For a paper to be included in this review, the following inclusion criteria were used:

Address for correspondence: Dr. G.M. Galeazzi, Newham Rehabilitation & Recovery Team, East London & the City University NHS Mental Health Trust, 150 High Street, Stratford, London E15 2NE (United Kingdom).

Fax: +44 020 8221 7656

E-mail: gian.galeazzi@elcmht.nhs.uk

- a) published in years 2004 to 2006;
- b) having the editorial status of an original paper (exceptions were made for short/brief reports with abstracts);
- c) reporting data on Italian samples (of quantitative or qualitative nature, no matter if pooled with data from other countries) concerning adult or elderly populations;
- d) having at least one Italian author individually mentioned in the list of authors (and not just as a member of a study group with collective authorship);
- e) written in English or Italian;
- f) published in English or Italian language peer-reviewed journals listed in the Appendix. The list includes the first 70 journals with highest Impact Factor of those listed by the Institute Scientific Information (ISI) Science Citation Index and in Social Science Citation Index for the discipline "Psychiatry" (reference year: 2004) and four Italian Journals included in the Psycinfo database of the American Psychological Association (*Epidemiologia e Psichiatria Sociale*, *Minerva Psichiatrica*, *Rivista di Psichiatria*, *Rivista Sperimentale di Freniatria*);
- g) addressing a social psychiatry topic. For this we used the definition of social psychiatry by Priebe & Hoffmann (2002) which was also applied by Holzinger & Angermeyer (2003) in their analysis of German social psychiatry research. According to that definition, social psychiatry is a psychiatric discipline studying the social dimension of mental health and mental illness, and social factors in mental health care. It therefore includes psychiatric epidemiology; studies on the impact of life events and interpersonal relationships in psychiatry; attitudes and opinions of patients, mental health professionals and general population on mental illness and its care; research on milieu- and socio-therapeutic methods and specific long-term therapeutic concepts for chronically ill patients; and the evaluation of mental health care using objective and subjective outcome criteria (Priebe & Hoffmann, 2002).
- e) studies merely describing services or therapeutic programmes;
- f) historical papers;
- g) studies dealing with the prevalence or risk of psychiatric disorders in specific physically ill populations;
- h) research on children and young adolescent (below 18 years of age).

The main method to identify papers was a hand search and browsing of the online tables of contents of all considered journals for the years 2004 to 2006. This was complemented by MEDLINE and Psycinfo searches using as search terms the title of journal and search words "Italy" or "Italian". If doubts arose about the inclusion of a paper, the two authors discussed the paper and reached a consensus about its inclusion or exclusion. The following information was then systematically extracted from the identified papers: topic covered, population investigated/source of data, design/scope of research, institutional affiliation of authors.

RESULTS

A total of 174 papers were identified and included in the analysis. Of these, 115 appeared in international peer-reviewed journals published in English, and 59 in the four Italian journals included. Figure 1 shows the selection process for papers for the review and the methods of research studies reported in the included papers.

Only a small number of studies employed qualitative research methods (n=7,4%). The overwhelming majority applied quantitative methods with statistical analyses (n=167,96%). The design used in most cases was an observational cross-sectional survey (86 papers); 31 studies used a prospective observational design, whilst the analysis of administrative databases was used in 21 papers. Eighteen papers reported results on intervention trials with pre- and post-intervention measures of outcomes. Six of these studies were described as randomized controlled trials (Van Os *et al.*, 2004; Gigantesco *et al.*, 2006b; Gray *et al.*, 2006; Magliano *et al.*, 2006c; Slade *et al.*, 2006; Veltro *et al.*, 2006). Eleven studies, finally, were retrospective analyses of clinical charts.

Primary sources of data for most papers (n=93) were psychiatric patients treated in community mental health services, followed by the general population (n=20), staff of psychiatric services (n=21), family or caregivers of patients (n=16), at risk populations (Hardoy *et al.*, 2005), patients seen by general practitioners (n=7), patients with chronic medical illnesses (n=2), prison inmates (n=2),

We therefore excluded:

- a) studies published in supplements, as letters, editorials, case reports, reviews or meta-analyses;
- b) purely conceptual and methodological papers;
- c) psychometric work, such as the construction or validation of rating scales (e.g., Becchi *et al.*, 2004);
- d) multicentre research where no Italian individual author was individually listed as author or co-author, although Italian authors may have been mentioned as members of a study group with collective authorship (e.g., Buist-Bouwman *et al.*, 2006);

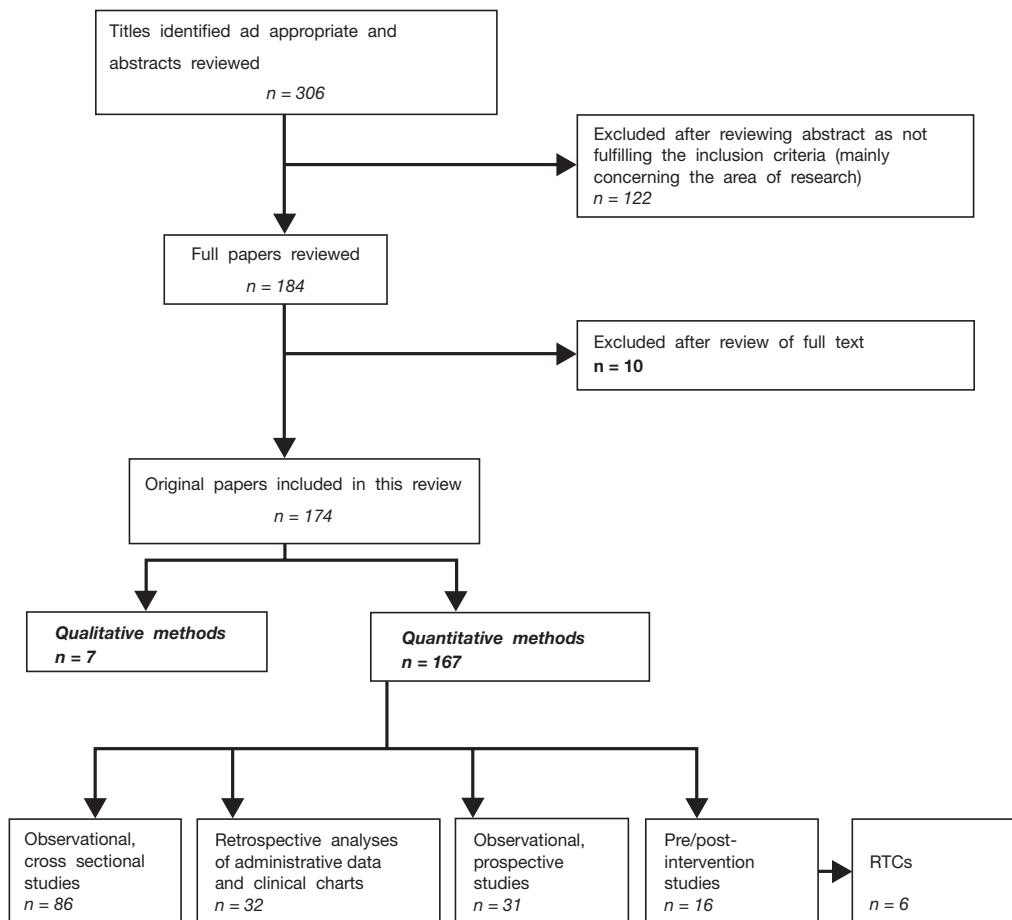


Figure 1. – Selection of papers for the review and methods of studied reported in included papers

elderly people in nursing homes (n=2), drug users (n=2), and other groups, e.g. police officers (Tomei *et al.*, 2006); 21 papers reported descriptions and analyses of administrative datasets and official statistics.

With respect to the diagnostic groups studied, the single most often represented diagnostic group were patients with schizophrenia (n=28). A substantial number of papers (n=28), mainly observational naturalistic studies, reported on the clientele in public services, without limiting the type or severity of the disorder. Severe mental illness was the inclusion criterion, even when not explicitly mentioned, for the case-mix of further 20 papers (e.g. those studying samples in therapeutic residential facilities).

Patients with mood disorders were the subject of ten papers, four studied patients with anxiety disorders, three papers focused on patients with eating disorders. Other

specific diagnostic groups were studied in fewer than three papers each (e.g. learning difficulties).

Regarding authorship and institutional affiliation, the majority of papers (n=109) reported for the first author (or first listed Italian author in case of international multicentre studies) a university affiliation. The two most productive university centres were the Section of Psychiatry and Clinical Psychology of the University of Verona, followed by the Department of Psychiatry at the University of Naples, SUN. Further centres represented with more than four papers published in the period considered were the Department of Psychiatry of the Universities of Bologna, Cagliari, Ferrara, Florence, Roma “La Sapienza”, and Turin. 36 manuscripts had a first Italian author affiliated with Local Health Agencies belonging to the National Health Service. The remaining 29 papers had as the first

Italian social psychiatry research: What gets published in peer reviewed journals?

Table I. – Italian social psychiatry papers published 2004-2006; topics.

	N°	REFERENCES
EPIDEMIOLOGY		
Patterns and trends of prescriptions of psychotropics	17	(Barbui <i>et al.</i> , 2004a, Percudani <i>et al.</i> , 2004b, Percudani <i>et al.</i> , 2004c, Andretta <i>et al.</i> , 2005, Barbui <i>et al.</i> , 2005, Bargagli <i>et al.</i> , 2005, Biancosino <i>et al.</i> , 2005, Guaiana <i>et al.</i> , 2005, Pacitti <i>et al.</i> , 2005, Percudani <i>et al.</i> , 2005a, Percudani <i>et al.</i> , 2005b, Pigato <i>et al.</i> , 2005, Tomasi <i>et al.</i> , 2005, Barbui <i>et al.</i> , 2006b, Barbui <i>et al.</i> , 2006c, Percudani <i>et al.</i> , 2006, Tomasi <i>et al.</i> , 2006)
Prevalence/incidence of mental disorders	10	(Battaglia <i>et al.</i> , 2004, Demyttenaere <i>et al.</i> , 2004, Faravelli <i>et al.</i> , 2004a, Faravelli <i>et al.</i> , 2004b, De Ronchi <i>et al.</i> , 2005b, Mangelli <i>et al.</i> , 2005, Carta <i>et al.</i> , 2006, de Girolamo <i>et al.</i> , 2006, Faravelli <i>et al.</i> , 2006, Gigantesco <i>et al.</i> , 2006a)
Suicide	8	(Dello Buono <i>et al.</i> , 2004, Majori <i>et al.</i> , 2004, Guaiana <i>et al.</i> , 2005, Lorant <i>et al.</i> , 2005, Pavia <i>et al.</i> , 2005, Zeppugno <i>et al.</i> , 2005, Martiello <i>et al.</i> , 2006, Scocco <i>et al.</i> , 2006b)
Other (disorders in at-risk populations, inmates)	4	(Carrà <i>et al.</i> , 2004a, Farina <i>et al.</i> , 2004, Bland <i>et al.</i> , 2005, Bellomo <i>et al.</i> , 2006)
MENTAL HEALTH SERVICE RESEARCH		
Costs and funding of mental health services and treatments	11	(Barbui <i>et al.</i> , 2004b, Garattini <i>et al.</i> , 2004, Grigoletti <i>et al.</i> , 2004, Mirandola <i>et al.</i> , 2004, Percudani <i>et al.</i> , 2004a, Ruggeri <i>et al.</i> , 2004a, Andretta <i>et al.</i> , 2005, Burti <i>et al.</i> , 2005, Barbui <i>et al.</i> , 2006a, Grigoletti <i>et al.</i> , 2006, Slade <i>et al.</i> , 2006)
Services utilisation, trends, determinants, drop-out	10	(Sangiorgio <i>et al.</i> , 2004, Gaddini <i>et al.</i> , 2005, Rossi <i>et al.</i> , 2005a, Rossi <i>et al.</i> , 2005b, Salvador-Carulla <i>et al.</i> , 2005, Tello <i>et al.</i> , 2005a, Tello <i>et al.</i> , 2005b, Menchetti <i>et al.</i> , 2006, Minnai <i>et al.</i> , 2006, Rossi <i>et al.</i> , 2006)
Characterisation of services/mapping	5	(de Girolamo <i>et al.</i> , 2005, Salvador-Carulla <i>et al.</i> , 2005, Santone <i>et al.</i> , 2005, Picardi <i>et al.</i> , 2006a, Pozzi <i>et al.</i> , 2006)
Analysis of macroindicators related to mental health	5	(Carta <i>et al.</i> , 2004, Guaiana <i>et al.</i> , 2005, Lorant <i>et al.</i> , 2005, Priebe <i>et al.</i> , 2005, Saxena <i>et al.</i> , 2006)
Quality management/audit	5	(Balestrieri <i>et al.</i> , 2004, Pasquali <i>et al.</i> , 2004, Abate <i>et al.</i> , 2005, Allevi <i>et al.</i> , 2006, Pozzi <i>et al.</i> , 2006)
Deinstitutionalisation	4	(Barbato <i>et al.</i> , 2004a, D'Avanzo <i>et al.</i> , 2004, Priebe <i>et al.</i> , 2005, Scocco <i>et al.</i> , 2006a)
OUTCOME RESEARCH		
Disability/social functioning	26	(Barbato <i>et al.</i> , 2004a, Bellino <i>et al.</i> , 2004, Lasalvia <i>et al.</i> , 2004, Lora <i>et al.</i> , 2004, Mazza <i>et al.</i> , 2004, Pallanti <i>et al.</i> , 2004, Quaglio <i>et al.</i> , 2004, Ruggeri <i>et al.</i> , 2004a, Ruggeri <i>et al.</i> , 2004b, Ruggeri <i>et al.</i> , 2004c, Slade <i>et al.</i> , 2004, Thornicroft <i>et al.</i> , 2004, Becker <i>et al.</i> , 2005, De Ronchi <i>et al.</i> , 2005a, Gaite <i>et al.</i> , 2005, Rocca <i>et al.</i> , 2005, Ruggeri <i>et al.</i> , 2005, Scuccimarra <i>et al.</i> , 2005, Bellomo <i>et al.</i> , 2006, Farina <i>et al.</i> , 2006, Gigantesco <i>et al.</i> , 2006b, Haro <i>et al.</i> , 2006, Magliano <i>et al.</i> , 2006c, Parabiaghi <i>et al.</i> , 2006, Schiavone <i>et al.</i> , 2006, Veltro <i>et al.</i> , 2006)
Psychopathology	22	(Barbato <i>et al.</i> , 2004a, Bellino <i>et al.</i> , 2004, Lasalvia <i>et al.</i> , 2004, Lora <i>et al.</i> , 2004, Ruggeri <i>et al.</i> , 2004a, Ruggeri <i>et al.</i> , 2004b, Ruggeri <i>et al.</i> , 2004c, Slade <i>et al.</i> , 2004, de Girolamo <i>et al.</i> , 2005, Lasalvia <i>et al.</i> , 2005, Rocca <i>et al.</i> , 2005, Ruggeri <i>et al.</i> , 2005, Scoscia <i>et al.</i> , 2005, Barbui <i>et al.</i> , 2006b, Bellomo <i>et al.</i> , 2006, Fassone <i>et al.</i> , 2006, Gray <i>et al.</i> , 2006, Magliano <i>et al.</i> , 2006a, Magliano <i>et al.</i> , 2006c, Pozzi <i>et al.</i> , 2006, Puschner <i>et al.</i> , 2006, Schiavone <i>et al.</i> , 2006)
Quality of life	21	(Alonso <i>et al.</i> , 2004, Barbato <i>et al.</i> , 2004b, Bellino <i>et al.</i> , 2004, Lasalvia <i>et al.</i> , 2004, Lora <i>et al.</i> , 2004, Morselli <i>et al.</i> , 2004, Ruggeri <i>et al.</i> , 2004a, Ruggeri <i>et al.</i> , 2004b, Ruggeri <i>et al.</i> , 2004c, Slade <i>et al.</i> , 2004, Thornicroft <i>et al.</i> , 2004, Becker <i>et al.</i> , 2005, Lasalvia <i>et al.</i> , 2005, Rocca <i>et al.</i> , 2005, Ruggeri <i>et al.</i> , 2005, Scoscia <i>et al.</i> , 2005, Gray <i>et al.</i> , 2006, Picardi <i>et al.</i> , 2006b, Puschner <i>et al.</i> , 2006, Scocco <i>et al.</i> , 2006a, Slade <i>et al.</i> , 2006)
Efficacy/effectiveness of specific interventions	18	(Biffi <i>et al.</i> , 2004, Bressi <i>et al.</i> , 2004, Di Giannantonio <i>et al.</i> , 2004, Lora <i>et al.</i> , 2004, Mazza <i>et al.</i> , 2004, Van Os <i>et al.</i> , 2004, Burti <i>et al.</i> , 2005, Scoscia <i>et al.</i> , 2005, Veltro <i>et al.</i> , 2005a, Biancosino <i>et al.</i> , 2006, Farina <i>et al.</i> , 2006, Gigantesco <i>et al.</i> , 2006b, Gray <i>et al.</i> , 2006, Magliano <i>et al.</i> , 2006a, Magliano <i>et al.</i> , 2006c, Scarnera <i>et al.</i> , 2006, Slade <i>et al.</i> , 2006, Veltro <i>et al.</i> , 2006)
Needs	11	(Meijer <i>et al.</i> , 2004, Ruggeri <i>et al.</i> , 2004b, Slade <i>et al.</i> , 2004, Van Os <i>et al.</i> , 2004, Thornicroft <i>et al.</i> , 2004, Becker <i>et al.</i> , 2005, Burti <i>et al.</i> , 2005, Kovess <i>et al.</i> , 2005, Lasalvia <i>et al.</i> , 2005, Rimondini <i>et al.</i> , 2006, Slade <i>et al.</i> , 2006)
Satisfaction with service/treatment	10	(Buscaglia <i>et al.</i> , 2004, Gigantesco <i>et al.</i> , 2004, Morselli <i>et al.</i> , 2004, Ruggeri <i>et al.</i> , 2004a, Ruggeri <i>et al.</i> , 2004c, Thornicroft <i>et al.</i> , 2004, Biancosino <i>et al.</i> , 2005, Ruggeri <i>et al.</i> , 2005, Veltro <i>et al.</i> , 2005a, Ruggeri <i>et al.</i> , 2006)

segue

Table I. – *segue*

	N°	REFERENCES
EPIDEMIOLOGY		
Other outcome	13	(Barbato <i>et al.</i> , 2004a, Robone <i>et al.</i> , 2004, Ruggeri <i>et al.</i> , 2004a, Di Michele <i>et al.</i> , 2005, Gaddini <i>et al.</i> , 2005, Magliano <i>et al.</i> , 2005a, Parabiaghi <i>et al.</i> , 2005, Scuccimarra <i>et al.</i> , 2005, Zanetti <i>et al.</i> , 2005, Fassone <i>et al.</i> , 2006, Haro <i>et al.</i> , 2006, Lazzarini <i>et al.</i> , 2006, Meloni <i>et al.</i> , 2006)
OTHER		
Family/carers' burden	12	(Lora <i>et al.</i> , 2004, Magliano <i>et al.</i> , 2004d, Meijer <i>et al.</i> , 2004, Trequatrini <i>et al.</i> , 2004, Magliano <i>et al.</i> , 2005a, Rinaldi <i>et al.</i> , 2005, Ferruzza <i>et al.</i> , 2006, Magliano <i>et al.</i> , 2006a, Magliano <i>et al.</i> , 2006c, Magliano <i>et al.</i> , 2006d, Tarricone <i>et al.</i> , 2006, Veltro <i>et al.</i> , 2006)
Impact of psychosocial factors on mental	12	(Faravelli <i>et al.</i> , 2004c, Lo Baido <i>et al.</i> , 2004, Marchiori <i>et al.</i> , 2004, Albert <i>et al.</i> , 2005, Bland <i>et al.</i> , 2005, Hardoy <i>et al.</i> , 2005, Berti <i>et al.</i> , 2006, Carta <i>et al.</i> , 2006, Favaro <i>et al.</i> , 2006, Grava <i>et al.</i> , 2006, Preti <i>et al.</i> , 2006, Tomei <i>et al.</i> , 2006)
Users' experiences and opinions	7	(Biancosino <i>et al.</i> , 2004, Bonner <i>et al.</i> , 2004, Burti <i>et al.</i> , 2004, Gigantesco <i>et al.</i> , 2004, Marmai <i>et al.</i> , 2005, Marin & Mezzina 2006, Paccaloni <i>et al.</i> , 2006)
Collaboration with GPs (recognition of disorders, appropriateness of referral and prescription)	7	(Balestrieri <i>et al.</i> , 2004, Saltini <i>et al.</i> , 2004, Balestrieri <i>et al.</i> , 2005, Berardi <i>et al.</i> , 2005, Di Pietro <i>et al.</i> , 2005, Calogiuri <i>et al.</i> , 2006, Menchetti <i>et al.</i> , 2006)
Burnout	7	(Galeazzi <i>et al.</i> , 2004, Freilone <i>et al.</i> , 2005, Pizzichi <i>et al.</i> , 2005, Zammuner & Galli, 2005, Lalli <i>et al.</i> , 2006, Pompili <i>et al.</i> , 2006, Scarnera <i>et al.</i> , 2006)
Attitudes and beliefs about mental illness	5	(Magliano <i>et al.</i> , 2004a, Magliano <i>et al.</i> , 2004b, Magliano <i>et al.</i> , 2004c, Buizza <i>et al.</i> , 2005, Veltro <i>et al.</i> , 2005b)
Aggression and violence	5	(Vanni <i>et al.</i> , 2004, Bowers <i>et al.</i> , 2005, Fasanelli <i>et al.</i> , 2006, Fioritti <i>et al.</i> , 2006, Grassi <i>et al.</i> , 2006)
Adherence	4	(Fasanelli <i>et al.</i> , 2006, Gray <i>et al.</i> , 2006, Kikkert <i>et al.</i> , 2006, Puschner <i>et al.</i> , 2006)
Ward atmosphere	3	(Burti <i>et al.</i> , 2004, Carrà <i>et al.</i> , 2004b, Di Lorenzo <i>et al.</i> , 2005)
Training of staff	3	(Magliano <i>et al.</i> , 2005a, Magliano <i>et al.</i> , 2005b, Magliano <i>et al.</i> , 2006b)
Therapeutic alliance	2	(Van Weeghel <i>et al.</i> , 2005, Slade <i>et al.</i> , 2006)
Transcultural psychiatry	2	(Lo Baido <i>et al.</i> , 2004, Carta <i>et al.</i> , 2006)

Italian author mainly members of other research institutions, such as the Istituto Superiore di Sanità (National Health Research Institute) and the Mario Negri Institute, various IRCCS (Istituti di Ricovero e Cura a Carattere Scientifico = Scientific Institutes for Research, Hospitalisation and Health Care) and Regional Health Agencies.

Among the included journals the following ones published more than 5 original research papers in social psychiatry with an Italian author: *Rivista di Psichiatria* (n=24), *Epidemiologia e Psichiatria Sociale* (n=21), *Social Psychiatry and Psychiatric Epidemiology* (n=20), *Psychotherapy and Psychosomatics* (n=8), *British Journal of Psychiatry* (n=6), *Psychiatric Services* (n=6), *Psichiatria e Psicoterapia* (n=6), *Minerva Psichiatrica* (n=6), *International Journal of Geriatric Psychiatry* (n=5), *International Clinical Psychopharmacology* (n=5).

DISCUSSION

Whether the total number of 174 papers is regarded as substantial or not, depends on the perspective. We have

not conducted the same analysis for other countries, but it might be safe to assume that the number is much smaller than that of the papers published in the United Kingdom and United States, but probably higher than that in some other European countries. In any case, the number shows that social psychiatry research in Italy is very much alive and productive. There is a critical mass of research production, which finds recognition not only in national papers, but even more so in international journals.

In any interpretation of the findings of this review, the limitations of the method should be considered. Our criteria to include journals and papers had a degree of arbitrariness. The decision on the inclusion or exclusion of specific journals and the classification of many single papers can be seen as questionable. Thus, there is a risk that we overlooked or mis-classified important papers. Also, we took papers at face value and did not critically appraise them applying quality criteria. Finally, publications report results of completed studies and there is an inevitable time lag between research production and publications. Our review subsequently reflects the research conducted a few years ago, whilst the current picture

which will be shown in publications in a few years time might already be different.

The focus on peer-reviewed publications was operationalised and is replicable to assess changes over time. It reflects the performance criteria of the academic world in which peer-reviewed publications - along with competitive grant income - are what counts for success. Complex bibliometric assessments are of course possible and there is a rich debate on how best to assess the value of psychiatric research (Lewison *et al.*, 2007). However, peer-reviewed publications are an important criterion in practically every exercise evaluating research performance.

A few centres dominate the output of Italian social psychiatry research. The dominance of a relatively small number of centres can be found in most countries and might not be seen as a problem as long as the overall critical mass is sufficient to generate competition and quality. Despite the dominance of a few centres, the number of authors is substantial. They are based in different regions and affiliated with a wide range of academic and non-academic institutions. Thus, there appear to be a wide spread interest and capacity to conduct and publish social psychiatry research which is not limited to main academic centres.

Much of the research is conducted in international collaboration. Italian social psychiatry researchers seem to be valued as partners in multi-centre studies and contribute on a practical and scientific level. There is a paucity of randomised controlled studies of interventions. We found only two randomised controlled national multi-centre trials: one testing a structured rehabilitation programme (Gigantesco *et al.*, 2006b), and the other one a psycho-educational intervention for families of patients with schizophrenia (Magliano *et al.*, 2006c). Some more single centre trials were conducted, regularly without substantial external funding and using local resources. Two of them dealt with family interventions and the exploration of family and carers' burden featured in twelve papers. The relative frequency of such studies might be regarded as a specific feature of Italian psychiatry and a potential strength in an international research competition.

Intervention studies usually take several years and absorb significant amounts of funding. It is therefore not surprising that only a small percentage of papers report results of such studies. However, the fact that there are only two national multicentre trials raises questions about the reasons. Lack of expertise can hardly be the main factor, since many researchers successfully provide such expertise in international studies. The shortage of intervention studies might be better explained by the absence of specific and substantial national funding programmes

for such research. In the United Kingdom there have been significant targeted funding programmes for national studies in mental health service research, and in Germany corresponding programmes have recently been initiated. In Italy, such funding programmes with regular national calls for applications either do not exist or are difficult to access. The recent initiative of the Ministry of Health to fund national targeted research activities may help to strengthen mental health service research, but is unlikely to alter the problem of insufficient funding completely. Subsequently, researchers have to tap into international funds, which is a naturally limited approach, utilise regional budgets, which are usually not sufficient to fund large trials, and - most importantly - improvise with own-account studies. The PROGRES project, surveying provision, features and outcomes in Italian residential facilities, of which the main publications appeared in the period considered (de Girolamo *et al.*, 2005; Santone *et al.*, 2005; Picardi *et al.*, 2006a, b; Tomasi *et al.*, 2006), showed that it is possible to create a network of committed researchers from different backgrounds and thus deliver a large and rigorous research project without large external grants. Several other small scale studies are also witness to the abilities of researchers at Italian universities and services to conduct research with limited funding. Yet, for a lasting improvement of social psychiatric research and its output, the position of social psychiatry research in the national arena must be strengthened and specific funding programmes are required. In this context, it may be noted that the innovative research funding experience coordinated by the National Health Research Institute in years 1997-2001, the National Mental Health Project (Morosini *et al.*, 2001) has not yet seen further editions.

Over the last five to ten years, qualitative research has internationally become more popular in social psychiatry. This is not yet reflected in the publications from Italy of the last three years. Perhaps, this is an area in which specific efforts of one or two centres might bare fruits relatively soon. There is no obvious reason why Italy should not be able to compete in qualitative research on a high level.

CONCLUSIONS

The method of this review has strengths and limitations, but the findings clearly show that social psychiatry research in Italy is active and produces internationally acknowledged results. The strong international collaboration is associated with a relatively small focus on specific

Italian issues and a wide acceptance of Anglo-American concepts and methods, which might not always be appropriate for the Italian situation. There are only a few aspects in which Italian social psychiatry makes a specific contribution. One example is research on family interventions.

Our review started from the assumption that research may influence service development and identified numbers of publications with relevant topics. However, the ultimate criterion for the value of research can hardly be the number of publications, but rather the impetus for service development and the benefit to patients in Italy. This, however, is much more difficult to measure than mere numbers of papers.

Appendix: Journals considered in this review:

Academic Psychiatry, Acta Psychiatrica Scandinavica, Addiction, Aging & Mental Health, American Journal of Geriatric Psychiatry, American Journal of Orthopsychiatry, American Journal of Psychiatry, Anxiety, Stress and Coping, Archives of Psychiatric Nursing, Archives of General Psychiatry, Australian and New Zealand Journal of Psychiatry, Behavioral Medicine, Biological Psychiatry, Bipolar Disorders, British Journal of Psychiatry, BMJ, Bulletin of the Menninger Clinic, Canadian Journal of Psychiatry, Community Mental Health Journal, Comprehensive Psychiatry, Contemporary Psychoanalysis, Culture Medicine and Psychiatry, Current Opinion in Psychiatry, Dementia and Geriatric Cognitive Disorders, Depression and Anxiety, Drug and Alcohol Dependence, Epidemiologia e Psichiatria Sociale, Epilepsy and Behavior, European Archives of Psychiatry and Clinical Neuroscience, European Neuropsychopharmacology, European Psychiatry, Experimental and Clinical Psychopharmacology, General Hospital Psychiatry, Harvard Review of Psychiatry, Human Psychopharmacology-Clinical and Experimental, International Clinical Psychopharmacology, International Journal of Clinical and Experimental Hypnosis, International Journal of Eating Disorders, International Journal of Geriatric Psychiatry, International Journal of Law and Psychiatry, International Journal of Methods in Psychiatric Research, International Journal of Neuropsychopharmacology, International Journal of Psychiatry in Medicine, International Journal of Social Psychiatry, International Psychogeriatrics, International Review of Psychiatry, Journal of Affective Disorders, Journal of the American Academy of Psychiatry and the Law, JAMA, Journal of the American Psychoanalytic Association, Journal of Anxiety Disorders, Journal of Behavior Therapy and Experimental Psychiatry, Journal of Clinical Psychiatry, Journal of Clinical Psychopharmacology, Journal of ECT, Journal of Forensic Psychiatry and Psychology, Journal of Geriatric Psychiatry and Neurology, Journal of the International Neuropsychological Society, Journal of Nervous and Mental Disease, Journal of Neuropsychiatry and Clinical Neurosciences, Journal of Personality Disorders, Journal of Psychiatric Research, Journal of Psychiatry and Neuroscience, Journal of Psychopharmacology, Journal of Psychosomatic Obstetrics and Gynecology, Journal of Psychosomatic Research, Journal of Traumatic Stress, Minerva Psichiatrica, Molecular Psychiatry, Neurocase, Neuropsychiatry, Neuropsychobiology, Neuropsychology and Behavioral Neurology, Journal of Neurology, Neurosurgery and Psychiatry, Neuropsychopharmacology, Nordic Journal of Psychiatry, Perspectives in Psychiatric Care, Pharmacopsychiatry, Progress in Neuro-Psychopharmacology & Biological Psychiatry, Psichiatria e

Psicoterapia, Psychiatric Annals, Psychiatric Clinics of North America, Psychiatric Quarterly, Psychiatric Rehabilitation Journal, Psychiatric Services, Psychiatry, Psychiatry and Clinical Neurosciences, Psychiatry Research, Psychiatry Research-Neuroimaging, Psychosomatic Medicine, Psychopathology, Psychopharmacology, Psychosomatic Medicine, Psychosomatics, Psychotherapy and Psychosomatics, Quality of Life Research, Rivista di Psichiatria, Rivista Sperimentale di Freniatria, Schizophrenia Bulletin, Schizophrenia Research, Sleep, Social Psychiatry and Psychiatric Epidemiology, Social Science and Medicine, Stress and Health, Suicide and Life-Threatening Behavior.

REFERENCES

- Abate S., D'amato A., Belpedio D. & Ventra D. (2005). Un indicatore di valutazione di qualità per una casa di cura psichiatrica convenzionata. *Rivista di Psichiatria* 40, 291-299.
- Albert U., Maina G., Bergesio C. & Bogetto F. (2005). Nocturnal panic and recent life events. *Depression and Anxiety* 22, 52-58.
- Allevi L., Salvi G. & Ruggeri M. (2006). La qualità dei servizi di salute mentale: un esercizio di autovalutazione nel servizio psichiatrico di Verona Sud. [Quality of mental health services: a self audit in the South Verona mental health service]. *Epidemiologia e Psichiatria Sociale* 15, 138-147.
- Alonso J., Ferrer M., Gandek B., Ware J. E., Jr., Aaronson N. K., Mosconi P., Rasmussen N. K., Bullinger M., Fukuhara S., Kaasa S. & Leplege A. (2004). Health-related quality of life associated with chronic conditions in eight countries: Results from the International Quality of Life Assessment (IQOLA) Project. *Quality of Life Research* 2, 283-298.
- Andretta M., Ciuna A., Corbari L., Cipriani A. & Barbui C. (2005). Impact of regulatory changes on first- and second-generation antipsychotic drug consumption and expenditure in Italy. *Social Psychiatry and Psychiatric Epidemiology* 40, 72-77.
- Angermeyer M. C. & Winkler I. (2001). Wer, was, wie viel, wo? Eine Analyse der Publikationen deutscher Autoren zu sozialpsychiatrischen Themen in wissenschaftlichen Zeitschriften [Who, What, How much, Where? - an analysis of publications by German authors on sociopsychiatric issues in scientific journals]. *Psychiatrische Praxis* 28, 368-375.
- Balestrieri M., Carta M. G., Leonetti S., Sebastiani G., Starace F. & Bellantuono C. (2004). Recognition of depression and appropriateness of antidepressant treatment in Italian primary care. *Social Psychiatry and Psychiatric Epidemiology* 39, 171-176.
- Balestrieri M., Marcon G., Samani F., Marini M., Sessa E., Gelatti U. & Donato F. (2005). Mental disorders associated with benzodiazepine use among older primary care attenders A regional survey. *Social Psychiatry and Psychiatric Epidemiology* 40, 308-315.
- Barbato A., D'Avanzo B., Rocca G., Amatulli A. & Lampugnani D. (2004a). A study of long-stay patients resettled in the community after closure of a psychiatric hospital in Italy. *Psychiatric Services* 55, 67-70.
- Barbato A., Monzani E. & Schiavi T. (2004b). Life satisfaction in a sample of outpatients with severe mental disorders: A survey in northern Italy. *Quality of Life Research* 13, 969-973.
- Barbui C., Ciuna A., Nose M., Patten S. B., Stegagno M., Burti L., Amadeo F. & Tansella M. (2004a). Off-label and non-classical prescriptions of antipsychotic agents in ordinary in-patient practice. *Acta Psychiatrica Scandinavica* 109, 275-278.
- Barbui C., Garattini L., Krulichova I., Apolone G., Negri E. & Ricci E. (2004b). Health status, resource consumption, and costs of dysthymic patients in Italian primary care. *Epidemiologia e Psichiatria Sociale* 13, 120-125.
- Barbui C., Ciuna A., Nose M., Levi D., Andretta M., Patten S. B., Amadeo F. & Tansella M. (2005). Drug treatment modalities in

- psychiatric inpatient practice: a 20-year comparison. *European Archives of Psychiatry and Clinical Neuroscience* 255, 136-142.
- Barbui C., Motterlini N. & Garattini L. (2006a). Health status, resource consumption, and costs of dysthymia. A multi-center two-year longitudinal study. *Journal of Affective Disorders* 90, 181-186.
- Barbui C., Nose M., Mazzi M. A., Bindman J., Leese M., Schene A., Becker T., Angermeyer M. C., Koeter M., Gray R. & Tansella M. (2006b). Determinants of first- and second-generation antipsychotic drug use in clinically unstable patients with schizophrenia treated in four European countries. *International Clinical Psychopharmacology* 21, 73-79.
- Barbui C., Nose M., Mazzi M. A., Thornicroft G., Schene A., Becker T., Bindman J., Leese M., Helm H., Koeter M., Weinmann S. & Tansella M. (2006c). Persistence with polypharmacy and excessive dosing in patients with schizophrenia treated in four European countries. *International Clinical Psychopharmacology* 21, 355-362.
- Bargagli A. M., Schifano P., Davoli M., Faggiano F., Perucci C. A. & Versino E. (2005). Determinants of methadone treatment assignment among heroin addicts on first admission to public treatment centres in Italy. *Drug and Alcohol Dependence* 79, 191-199.
- Battaglia A., Dubini A., Mannheimer R. & Pancheri P. (2004). Depression in the Italian community: epidemiology and socio-economic implications. *International Clinical Psychopharmacology* 19, 135-142.
- Becchi A., Rucci P., Placentino A., Neri G. & de Girolamo G. (2004). Quality of life in patients with schizophrenia—comparison of self-report and proxy assessments. *Social Psychiatry and Psychiatric Epidemiology* 39, 397-401.
- Becker T., Leese M., Krumm S., Ruggeri M. & Vazquez-Barquero J. L. (2005). Needs and quality of life among patients with schizophrenia in five European centres: what is the impact of global functioning scores? *Social Psychiatry and Psychiatric Epidemiology* 40, 628-634.
- Bellino S., Rocca P., Patria L., Marchiaro L., Rasetti R., Di Lorenzo R., Paradiso E. & Bogetto F. (2004). Relationships of Age at Onset With Clinical Features and Cognitive Functions in a Sample of Schizophrenia Patients. *Journal of Clinical Psychiatry* 65, 908-914.
- Bellomo A., De Giorgi A., Petito A., Cammeo C., Lepore A., Borrelli A. & Nardini M. (2006). Il disturbo post-traumatico da stress come conseguenza di gravi incidenti stradali [Post-traumatic stress disorder as a consequence of severe road traffic accidents]. *Minerva Psichiatrica* 47, 155-164.
- Berardi D., Menchetti M., Cevenini N., Scaini S., Versari M. & De Ronchi D. (2005). Increased recognition of depression in primary care. Comparison between primary-care physician and ICD-10 diagnosis of depression. *Psychotherapy and Psychosomatics* 74, 225-230.
- Berti A., Fizzotti C., Maberino C. & Zanelli E. (2006). Impatto dello stalking sulle vittime: rilievo epidemiologico sul fenomeno nella città di Genova. *Rivista di Psichiatria* 41, 241-249.
- Biancosino B., Barbui C., Marmai L., Dona S. & Grassi L. (2005). Determinants of antipsychotic polypharmacy in psychiatric inpatients: a prospective study. *International Clinical Psychopharmacology* 20, 305-309.
- Biancosino B., Barbui C., Pera V., Osti M., Rocchi D., Marmai L. & Grassi L. (2004). Patient opinions on the benefits of treatment programs in residential psychiatric care. *Canadian Journal of Psychiatry* 49, 613-620.
- Biancosino B., Rocchi D., Dona S., Kotrotsiou V., Marmai L. & Grassi L. (2006). Efficacy of a short-term psychoeducational intervention for persistent non-organic insomnia in severely mentally ill patients. A pilot study. *European Psychiatry* 21, 460-462.
- Biffi G., Cella M. & Amigoni C. (2004). Progetto Vita: limiti e pregi della sua applicabilità in un servizio psichiatrico territoriale. [Life project: limits and benefits in a psychiatric community service]. *Rivista di Psichiatria* 2004, 258-264.
- Bland S. H., Valoroso L., Stranges S., Strazzullo P., Farinaro E. & Trevisan M. (2005). Long-term follow-up of psychological distress following earthquake experiences among working Italian males: a cross-sectional analysis. *Journal of Nervous and Mental Disease* 193, 420-423.
- Bonner Y. D. B., Andreoli M. V., Lemmi M., Garamante M., Pellegrino R. & Poziello F. (2004). Farmaco Buono o Cattivo? Opinioni di un gruppo di familiari e di utenti [Are drugs good or bad? Patients and families opinions]. *Rivista Sperimentale di Freniatria* 128, 111-131.
- Bowers L., Douzenis A., Galeazzi G. M., Forghieri M., Tsopelas C., Simpson A. & Allan T. (2005). Disruptive and dangerous behaviour by patients on acute psychiatric wards in three European centres. *Social Psychiatry and Psychiatric Epidemiology* 40, 822-828.
- Bressi C., Lo Baido R., Manenti S., Frongia P., Guidotti B., Maggi L., Merati O., Giordano P. & Invernizzi G. (2004). Efficacia clinica della terapia familiare sistemica nella schizofrenia: uno studio prospettico longitudinale [Schizophrenia and the clinical efficacy of the systemic family therapy: a prospective longitudinal study]. *Rivista di Psichiatria* 39, 189-197.
- Buist-Bouwman M. A., De Graaf R., Vollebergh W. A., Alonso J., Bruffaerts R., Ormel J. & Investigators E. M. (2006). Functional disability of mental disorders and comparison with physical disorders: a study among the general population of six European countries. *Acta Psychiatrica Scandinavica* 113, 492-500.
- Buizza C., Pioli R., Ponteri M., Vittorielli M., Corradi A., Minicuci N. & Rossi G. (2005). Atteggiamenti verso la malattia mentale e caratteristiche socio-demografiche: uno studio in una città del nord Italia. [Community attitudes towards mental illness and socio-demographic characteristics: an Italian study]. *Epidemiologia e Psichiatria Sociale* 14, 154-162.
- Burti L., Andreone N. & Mazzi M. (2004). Reassessing treatment environments after two decades: client and staff perceptions of an Italian Community Mental Health Service environment, then and now. *Community Mental Health Journal* 40, 199-210.
- Burti L., Amaddeo F., Ambrosi M., Bonetto C., Cristofalo D., Ruggeri M. & Tansella M. (2005). Does additional care provided by a consumer self-help group improve psychiatric outcome? A study in an Italian community-based psychiatric service. *Community Mental Health Journal* 41, 705-720.
- Buscaglia G., Carolei A., Baldazzi F., Marinoni A. & Ferro A. M. (2004). Rilevare la soddisfazione dei pazienti e dei familiari: l'esperienza del Dipartimento di Salute Mentale di Savona. [Surveying patients' and family members' satisfaction: the experience of the Mental Health Department in Savona]. *Epidemiologia e Psichiatria Sociale* 13, 158-168.
- Calogiuri V., Magnavita N. & Angelozzi A. (2006). Analisi degli invii dei medici di Medicina Generale ad un Ambulatorio di Salute Mentale: uno studio esplorativo [Analyses of General Practitioners' referral to Mental Health Centre: a survey]. *Minerva Psichiatrica* 47, 199-208.
- Carrà G., Giacobone C., Pozzi F., Alecci P. & Barale F. (2004a). Prevalenza di disturbi mentali e trattamenti correlati in una casa circondariale: uno studio di 20 mesi di casi consecutivi. [Prevalence of mental disorder and related treatments in a local jail: a 20-month consecutive case study]. *Epidemiologia e Psichiatria Sociale* 13, 47-54.
- Carrà G., Giroletti A., Scioli R. & Barale F. (2004b). Ward atmosphere in a psychiatric inpatient service in Italy. *Minerva Psichiatrica* 45, 133-140.
- Carta M. G., Kovess V., Hardoy M. C., Brugha T., Fryers T., Lehtinen V. & Xavier M. (2004). Psychosocial wellbeing and psychiatric care in the European Communities: analysis of macro indicators. *Social Psychiatry and Psychiatric Epidemiology* 39, 883-892.
- Carta M. G., Reda M. A., Consul M. E., Brascesco V., Cetkovich-Bakmans M. & Hardoy M. C. (2006). Depressive episodes in Sardinian emigrants to Argentina: why are females at risk? *Social Psychiatry and Psychiatric Epidemiology* 41, 452-456.
- D'Avanzo B., Battino R. N., Gallus S. & Barbato A. (2004). Factors predicting discharge of patients from community residential facilities: A longitudinal study from Italy. *Australian and New Zealand Journal of Psychiatry* 38, 619-628.

- de Girolamo G., Picardi A., Santone G., Falloon I., Morosini P., Fioritti A. & Micciolo R. (2005). The severely mentally ill in residential facilities: a national survey in Italy. *Psychological Medicine* 35, 421-431.
- de Girolamo G., Polidori G., Morosini P., Scarpino V., Reda V., Serra G., Mazzi F., Alonso J., Vilagut G., Visona G., Falsirollo F., Rossi A. & Warner R. (2006). Prevalence of common mental disorders in Italy: Results from the European Study of the Epidemiology of Mental Disorders (ESEMeD). *Social Psychiatry and Psychiatric Epidemiology* 41, 853-861.
- de Girolamo G., Bassi M., Neri G., Ruggeri M., Santone G. & Picardi A. (2007). The current state of mental health care in Italy: problems, perspectives, and lessons to learn. *European Archives of Psychiatry and Clinical Neuroscience* 257, 71-82.
- De Ronchi D., Bellini F., Berardi D., Serretti A., Ferrari B. & Dalmonte E. (2005a). Cognitive status, depressive symptoms, and health status as predictors of functional disability among elderly persons with low-to-moderate education: the Faenza community aging study. *American Journal of Geriatric Psychiatry* 13, 672-685.
- De Ronchi D., Berardi D., Menchetti M., Ferrari G., Serretti A., Dalmonte E. & Fratiglioni L. (2005b). Occurrence of cognitive impairment and dementia after the age of 60: a population-based study from Northern Italy. *Dementia and Geriatric Cognitive Disorders* 19, 97-105.
- Dello Buono M., Darù E., Colucci E. & Pavan L. (2004). Predittori di rischio suicidario nelle diverse età della vita: uno studio su 511 suicidi [Predictors of suicide risk across the life cycle: a study of 511 suicides]. *Rivista di Psichiatria* 39, 340-348.
- Demyttenaere K., Bruffaerts R., Posada-Villa J., Gasquet I., Kovess V., Lepine J. P., Angermeyer M. C., Bernert S., de Girolamo G., Morosini P., Polidori G., Kikkawa T., Kawakami N., Ono Y., Takeshima T., Uda H., Karam E. G., Fayyad J. A., Karam A. N., Mneimneh Z. N., Medina-Mora M. E., Borges G., Lara C., De Graaf R., Ormel J., Gureje O., Shen Y., Huang Y., Zhang M., Alonso J., Haro J. M., Vilagut G., Bromet E. J., Gluzman S., Webb C., Kessler R. C., Merikangas K. R., Anthony J. C., Von Korff M. R., Wang P. S., Brugha T. S., Aguilar-Gaxiola S., Lee S., Heeringa S., Pennell B. E., Zaslavsky A. M., Ustun T. B. & Chatterji S. (2004). Prevalence, severity, and unmet need for treatment of mental disorders in the World Health Organization World Mental Health Surveys. *Journal of the American Medical Association* 291, 2581-2590.
- Di Giannantonio M., Brocco C., Farina B., Di Fabio V. & Ferro F. (2004). Interventi integrati nella schizofrenia: uno studio controllato sul contributo della terapia di gruppo [Integrated treatment for chronic schizophrenic patients: a controlled study on group psychotherapy supply]. *Rivista di Psichiatria* 39, 198-207.
- Di Lorenzo R., Pagani R., Vasta A., Forghieri M. & Curci P. (2005). Modalità di espressione e di funzionamento del gruppo terapeutico in un presidio psichiatrico di diagnosi e cura [Different expression and functioning of a psychotherapeutic group in a psychiatric ward for acute patients]. *Psichiatria e Psicoterapia* 24, 216-230.
- Di Michele V., Bolino F., Roncone R. & Casacchia M. (2005). Trattamento della schizofrenia con antipsicotici di prima e seconda generazione: Uno studio naturalistico a lungo termine / Treatment of schizophrenia with first and second generation antipsychotic drugs. A long term naturalistic study. *Psichiatria e Psicoterapia* 24, 133-141.
- Di Pietro G., Morlino M., Grimaldi M., Coppola N. & Valoroso L. (2005). Disturbi dell'Alimentazione in primary care: rilevazione di casi "a rischio" di Anoressia e Bulimia con la collaborazione dei Medici di Medicina Generale dell'area napoletana. *Rivista di Psichiatria* 40, 276-280.
- Faravelli C., Abrardi L., Bartolozzi D., Cecchi C., Cosci F., D'adamo D., Lo Iacono B., Ravaldi C., Scarpato M. A., Truglia E. & Rosi S. (2004a). The Sesto Fiorentino study: background, methods and preliminary results. Lifetime prevalence of psychiatric disorders in an Italian community sample using clinical interviewers. *Psychotherapy and Psychosomatics* 73, 216-225.
- Faravelli C., Abrardi L., Bartolozzi D., Cecchi C., Cosci F., D'adamo D., Lo Iacono B., Ravaldi C., Scarpato M. A., Truglia E., Rossi Prodi P. M. & Rosi S. (2004b). The Sesto Fiorentino study: point and one-year prevalences of psychiatric disorders in an Italian community sample using clinical interviewers. *Psychotherapy and Psychosomatics* 73, 226-234.
- Faravelli C., Giugni A., Salvatori S. & Ricca V. (2004c). Psychopathology after rape. *American Journal of Psychiatry* 161, 1483-1485.
- Faravelli C., Ravaldi C., Truglia E., Zucchi T., Cosci F. & Ricca V. (2006). Clinical epidemiology of Eating Disorders: results from the Sesto Fiorentino Study. *Psychotherapy and Psychosomatics* 75, 376-383.
- Farina B., Venturi P., Onofri A., Raja M., Pasquini P. & Di Giannantonio M. (2004). Screening del disturbo post-traumatico da stress nelle popolazioni a rischio: il caso del disastro civile di Via Ventotene a Roma del 27 novembre 2001 [Screening of PTSD in risk populations: a survey on the population of 11.27.2001 Rome Ventotene street civil disaster]. *Rivista di Psichiatria* 39, 265-269.
- Farina E., Mantovani F., Fioravanti R., Pignatti R., Chiavari L., Imbornone E., Olivetto F., Alberoni M., Mariani C. & Nemni R. (2006). Evaluating two group programmes of cognitive training in mild-to-moderate AD: is there any difference between a 'global' stimulation and a 'cognitive-specific' one? *Aging & Mental Health* 10, 211-218.
- Fasanelli E., Miti G. & Zanasi M. (2006). Il comportamento aggressivo in soggetti ospedalizzati con schizofrenia. *Psichiatria e Psicoterapia* 25, 147-159.
- Fassone G., Trincia V., Pasquini M., Picardi A., D'amato A., Biondi M. & Pasquini P. (2006). Uno studio naturalistico di follow-up a 2 e 3,5 anni in pazienti con disturbi depressivi unipolari [A 2 and 3.5-year naturalistic follow-up study of patients with unipolar depressive disorders]. *Rivista di Psichiatria* 41, 320-325.
- Favaro A., Tenconi E., Colombo G. & Santonastaso P. (2006). Full and partial post-traumatic stress disorder among World War II prisoners of war. *Psychopathology* 39, 187-191.
- Ferruzza E., Sale E., Mercuriali E. & Boatto E. (2006). Il trauma tra passato e presente. Aspetti psicopatologici nei caregivers di traumatizzati cronic: un punto di vista psicodinamico. *Rivista di Psichiatria* 41, 16-25.
- Fioritti A., Ferriani E., Rucci P. & Melega V. (2006). Characteristics of homicidal perpetrators among Italian forensic hospital inmates. *International Journal of Law and Psychiatry* 29, 212-219.
- Freilone F., Fratianni B. & Giraud E. (2005). Il burnout in strutture geriatriche [Burnout in geriatric institutes]. *Minerva Psichiatrica* 43, 237-242.
- Gaddini A., Franco F., Di Lallo D. & Biscaglia L. (2005). La schizofrenia e il ricorso al ricovero nei reparti psichiatrici per acuti del Lazio: studio di follow-up a quattro anni. [Hospitalisation for schizophrenia in acute psychiatric wards of the Lazio region: a 4-year follow-up study]. *Epidemiologia e Psichiatria Sociale* 14, 227-234.
- Gaite L., Vazquez Barquero J. L., Herran A., Thornicroft G., Becker T., Sierra Biddle D., Ruggeri M., Schene A., Knapp M. & Vazquez Bourgon J. (2005). Main determinants of Global Assessment of Functioning score in schizophrenia: a European multicenter study. *Comprehensive Psychiatry* 46, 440-446.
- Galeazzi G. M., Delmonte S., Fakhoury W. & Priebe S. (2004). Morale of mental health professionals in Community Mental Health Services of a Northern Italian Province. *Epidemiologia e Psichiatria Sociale* 13, 191-197.
- Garattini L., Barbui C., Clemente R., Cornago D. & Parazzini F. (2004). Direct costs of schizophrenia and related disorders in Italian community mental health services: a multicenter, prospective 1-year followup study. *Schizophrenia Bulletin* 30, 295-302.
- Gigantesco A., Bertoldi S., Mosna S., Mirabella F. & Morosini P. (2004). Gruppi di automutuoaiuto: la valutazione dei benefici dal punto di vista dei partecipanti [Mutual-help groups: the members' views of their benefits]. *Rivista di Psichiatria* 2004, 410-416.

- Gigantesco A., Palumbo G., Mirabella F., Pettinelli M. & Morosini P. (2006a). Prevalence of psychiatric disorders in an Italian town: low prevalence confirmed with two different interviews. *Psychotherapy and Psychosomatics* 75, 170-176.
- Gigantesco A., Vittorielli M., Pioli R., Falloon I. R. H., Rossi G. & Morosini P. (2006b). The VADO Approach in Psychiatric Rehabilitation: A Randomized Controlled Trial. *Psychiatric Services* 57, 1778-1783.
- Grassi L., Biancosino B., Marmai L., Kotrotsiou V., Zanchi P., Peron L., Marangoni C., Vanni A. & Barbui C. (2006). Violence in psychiatric units: A 7-year Italian study of persistently assaultive patients. *Social Psychiatry and Psychiatric Epidemiology* 41, 698-703.
- Grava G., Ceroni G. B., Rucci P. & Scudellari P. (2006). Suicidal behaviors and personality structure. *Suicide and Life Threatening Behaviors* 36, 569-577.
- Gray R., Leese M., Bindman J., Becker T., Burti L., David A., Gournay K., Kikkert M., Koeter M., Puschner B., Schene A., Thornicroft G. & Tansella M. (2006). Adherence therapy for people with schizophrenia: European multicentre randomised controlled trial. *British Journal of Psychiatry* 189, 508-514.
- Griegoletti L., Amaddeo F., de Girolamo G. & Picardi A. (2004). I costi delle strutture residenziali psichiatriche italiane. [Costs of psychiatric residential care in Italy]. *Epidemiologia e Psichiatria Sociale* 13, 262-269.
- Griegoletti L., Amaddeo F., Grassi A., Boldrini M., Chiappelli M., Percudani M., Catapano F., Fiorillo A., Bartoli L., Bacigalupi M., Albanese P., Simonetti S., Perali F., De Agostini P., Tansella M. & I-Pscost G. (2006). Proposta per un nuovo sistema di finanziamento dei Dipartimenti di Salute Mentale. Risultati di uno studio valutativo multicentrico nazionale. (I-psycost study) [Proposal for a new funding system for mental health departments. Results from a evaluative multicentre Italian study (I-psycost)]. *Epidemiologia e Psichiatria Sociale* 15, 295-306.
- Guaiana G., Andretta M., Corbari L., Mirandola M., Sorio A., D'Avanzo B. & Barbui C. (2005). Antidepressant drug consumption and public health indicators in Italy, 1955 to 2000. *Journal of Clinical Psychiatry* 66, 750-755.
- Hardoy M. C., Carta M. G., Marci A. R., Carbone F., Cadeddu M., Kovess V., Dell'osso L. & Carpiniello B. (2005). Exposure to aircraft noise and risk of psychiatric disorders: the Elmas survey--aircraft noise and psychiatric disorders. *Social Psychiatry and Psychiatric Epidemiology* 40, 24-26.
- Haro J. M., Novick D., Suarez D., Alonso J., Lepine J. P., Ratcliffe M., Kristensen K. H., Lepine J. P., Gasquet I., Naber D., Mavreas V. G., Murray D., Pancheri P., Slooff C. J., Teixeira J. M., Alonso J., Haro J. M., Bousson? O M., Croudace T., Jones P. B. & Knapp M. (2006). Remission and relapse in the outpatient care of schizophrenia: Three-year results from the schizophrenia outpatient health outcomes study. *Journal of Clinical Psychopharmacology* 26, 571-578.
- Holzinger A. & Angermeyer M. C. (2002). Sozialpsychiatrische Forschung im deutschen Sprachraum. [Social-psychiatric research in German-speaking countries]. *Psychiatrische Praxis* 29, 397-410.
- Holzinger A. & Angermeyer M. C. (2003). Aktuelle Themen sozialpsychiatrischer Forschung im deutschen Sprachraum: Eine Inhaltsanalyse wissenschaftlicher Zeitschriften. [Current topics of social-psychiatric research in German speaking countries: a content analysis of scientific journals]. *Psychiatrische Praxis* 30, 424-437.
- Kikkert M. J., Schene A. H., Koeter M. W. J., Robson D., Born A., Helm H., Nose M., Goss C., Thornicroft G. & Gray R. J. (2006). Medication adherence in schizophrenia: Exploring patients', carers' and professionals' views. *Schizophrenia Bulletin* 32, 786-794.
- Kovess V., Caldas De Almeida Jose M., Carta M., Dubuis J., Lacalmonie E., Pellet J., Roelandt J. L., Moreno Kustner B., Walsh D. & Wiersma D. (2005). Professional team's choices of intervention towards problems and needs of patients suffering from schizophrenia across six European countries. *European Psychiatry* 20, 521-528.
- Lalli N., Seta A., De Luca V. & Innibelli V. (2006). Gli psicoterapeuti e la sindrome del burnout: un'indagine interattiva preliminare sulla percezione della diffusione, gravità e fattori di rischio [Psychotherapists and burnout syndrome: a preliminary interactive survey on the perception of diffusion, severity and risk factors]. *Rivista di Psichiatria* 41, 166-171.
- Lasalvia A., Bonetto C., De Santi K. & Ruggeri M. (2004). Tipologie di decorso clinico nelle persone con disturbi mentali: quale l'impatto sulla disabilità sociale e sulla qualità della vita? Uno studio longitudinale. [Patterns of clinical course in persons with mental disorders: which impact on social disability and quality of life? A longitudinal study]. *Epidemiologia e Psichiatria Sociale* 13, 169-180.
- Lasalvia A., Bonetto C., Malchioldi F., Salvi G., Parabiaghi A., Tansella M. & Ruggeri M. (2005). Listening to patients' needs to improve their subjective quality of life. *Psychological Medicine* 35, 1655-1665.
- Lazzerini F., Spagna F., Raimondi R., Restuccia G. & Lenzi A. (2006). Antipsicotici atipici: dropout come indicatore di efficacia [Atypical antipsychotics: drop-out as efficacy indicator]. *Rivista di Psichiatria* 41, 388-396.
- Lewis G., Thornicroft G., Szmulker G. & Tansella M. (2007). Fair assessment of the merits of psychiatric research. *British Journal of Psychiatry* 190, 314-318.
- Lo Baido R., La Grutta S., Bressi C., Mauri M. & Trombini E. (2004). Il fenomeno delle Mutilazioni Genitali Femminili (MGF): studio clinico e psicopatologico su un gruppo di immigrate in Sicilia [The Female Genital Mutilations (FGM): a clinical and psychopathological study on a group of immigrants in Sicily]. *Rivista di Psichiatria* 39, 198-207.
- Lora A., Contartese A., Franco M., Lo Maglio M. C., Molteni E., Pallavicini A., Rasi E., Rossini M., Violanti E. & Lanzara D. (2004). L'efficacia nella pratica delle strutture residenziali territoriali: uno studio osservazionale. [An observational study of effectiveness in community residential facilities]. *Epidemiologia e Psichiatria Sociale* 13, 198-208.
- Lorant V., Kunst A. E., Huisman M., Costa G., Mackenbach J. & Health E. U. W. G. O. S.-E. I. I. (2005). Socio-economic inequalities in suicide: a European comparative study. *British Journal of Psychiatry* 187, 49-54.
- Magliano L., De Rosa C., Fiorillo A., Malangone C., Guarneri M., Marasco C., Maj M. & The Working Group of the Italian National Study on Families of Persons with S. (2004a). Beliefs of Psychiatric Nurses about Schizophrenia: A Comparison with Patients' Relatives and Psychiatrists. *International Journal of Social Psychiatry* 50, 319-330.
- Magliano L., De Rosa C., Fiorillo A., Malangone C. & Maj M. (2004b). Perception of patients' unpredictability and beliefs on the causes and consequences of schizophrenia- a community survey. *Social Psychiatry and Psychiatric Epidemiology* 39, 410-416.
- Magliano L., Fiorillo A., De Rosa C., Malangone C. & Maj M. (2004c). Beliefs about schizophrenia in Italy: a comparative nationwide survey of the general public, mental health professionals, and patients' relatives. *Canadian Journal of Psychiatry* 49, 322-330.
- Magliano L., Fiorillo A., De Rosa C., Malangone C. & Maj M. (2004d). Carico, atteggiamenti e sostegno sociale nelle famiglie dei pazienti con malattie fisiche di lunga durata. [Burden, attitudes and social support in the families of patients with long-term physical diseases]. *Epidemiologia e Psichiatria Sociale* 13, 255-261.
- Magliano L., Fiorillo A., De Rosa C., Malangone C. & Maj M. (2005a). Family burden in long-term diseases: a comparative study in schizophrenia vs. physical disorders. *Social Science and Medicine* 61, 313-322.
- Magliano L., Fiorillo A., Malangone C., De Rosa C., Favata G., Sasso A., Prezioso M., Pezzinati L., Gentile F., Casale L., Bondi E., Test G. R., Di Lella M., Biscussi E., Degl'innocenti F., Bellini R., Di Nunzio R., Matrella L., Salmeri R., Cantone R., Gargiulo L., Esposito A., Delcuratolo V., Giannini M., Maresca L., Cavaliere G., Scandone B., Folla M., Raffaelli M., Innocente P., Dagianti F.,

- Lucania S., Scorsino A., Bardicchia F., Cerullo G., Curreli R., Miscali S., Scordato M., Campo G., Mameli C., Sodde C., D'ambra L., Malacarne A. & Maj M. (2005b). Aspetti positivi e difficoltà nella diffusione degli interventi psicoeducativi familiari nella pratica clinica: uno studio multicentrico in 23 CSM italiani. [Benefits and difficulties in implementing family psychoeducational interventions for schizophrenia in mental health services: results from a multicentre Italian study]. *Epidemiologia e Psichiatria Sociale* 14, 235-242.
- Magliano L., Fiorillo A., Malangone C., De Rosa C., Favata G., Sasso A., Prezioso M., Pezzenati L., Gentile F., Casale L., Bondi E., Test G. R., Di Lella M., Biscussi E., Degl'innocent F., Bellini R., Di Nunzio R., Matrella L., Salmeri R., Cantone R., Gargiulo L., Esposito A., Delcuratolo V., Giannini M., Maresca L., Cavaliere G., Scandone B., Folla M., Raffaelli M., Innocente P., Dagianti F., Lucania S., Scorsino A., Bardicchia F., Cerullo G., Curreli R., Miscali S., Scordato M., Campo G. & Maj M. (2006a). Interventi psicoeducativi familiari per la schizofrenia nella pratica clinica: effetto sullo stato clinico e la disabilità dei pazienti e sul carico e le risorse familiari. [Family psychoeducational interventions for schizophrenia in routine settings: impact on patients' clinical status and social functioning and on relatives' burden and resources]. *Epidemiologia e Psichiatria Sociale* 15, 219-227.
- Magliano L., Fiorillo A., Malangone C., De Rosa C. & Maj M. (2006b). Implementing psychoeducational interventions in Italy for patients with schizophrenia and their families. *Psychiatric Services* 57, 266-269.
- Magliano L., Fiorillo A., Malangone C., De Rosa C. & Maj M. (2006c). Patient functioning and family burden in a controlled, real-world trial of family psychoeducation for schizophrenia. *Psychiatric Services* 57, 1784-1791.
- Magliano L., Fiorillo A., Malangone C., De Rosa C. & Maj M. (2006d). Social network in long-term diseases: a comparative study in relatives of persons with schizophrenia and physical illnesses versus a sample from the general population. *Social Science and Medicine* 62, 1392-1402.
- Majori S., Zanin G., Benvenuti K., Cristofolletti M., Tardivo S., Romano G., Trivello R. & Baldo V. (2004). Suicidal behavior between 1996 and 2000 in the municipality of Padua (Italy). A retrospective analysis. *Minerva Psichiatrica* 45, 141-146.
- Mangelli L., Benazzi F. & Fava G. A. (2005). Assessing the community prevalence of bipolar spectrum symptoms by the mood disorder questionnaire. *Psychotherapy and Psychosomatics* 74, 120-122.
- Marchiori E., Rossi L. & Colombo G. (2004). La sindrome della donna malmenata in Italia [The battered woman syndrome in Italy. A psychological prospective study]. *Minerva Psichiatrica* 45, 43-54.
- Marin I. & Mezzina R. (2006). Percorsi soggettivi di guarigione. Studio pilota sui fattori di recovery in salute mentale. *Rivista Sperimentale di Freniatria* 130, 129-152.
- Marmai R., Biancosino B., Rocchi D., Kotrotsiou V., Avramidou V. & Grassi L. (2005). L'opinione dei pazienti sui fattori terapeutici del gruppo-cinema: uno studio pilota. *Rivista di Psichiatria* 40, 347-352.
- Martiello M. A., Cipriani F., Voller F., Buiatti E. & Giacchi M. (2006). Epidemiologia descrittiva del suicidio in Toscana, 1988-2002. [The descriptive epidemiology of suicide in Tuscany, 1988-2002]. *Epidemiologia e Psichiatria Sociale* 15, 202-210.
- Mazza M., Barbarino E., Capitani S., Sarchiapone M. & De Risio S. (2004). Day hospital treatment for mood disorders. *Psychiatric Services* 55, 436-438.
- Meijer K., Schene A., Koeter M., Knudsen H. C., Becker T., Thornicroft G., Vazquez-Barquero J. L. & Tansella M. (2004). Needs for care of patients with schizophrenia and the consequences for their informal caregivers- results from the EPSILON multi centre study on schizophrenia. *Social Psychiatry and Psychiatric Epidemiology* 39, 251-258.
- Meloni D., Miccinesi G., Bencini A., Conte M., Crocetti E., Zappa M. & Ferrara M. (2006). Mortality among discharged psychiatric patients in Florence, Italy. *Psychiatric Services* 57, 1474-1481.
- Menchetti M., Cevenini N., De Ronchi D., Quartesan R. & Berardi D. (2006). Depression and frequent attendance in elderly primary care patients. *General Hospital Psychiatry* 28, 119-124.
- Minnai G. P., Tondo L., Salis P., Ghiani C., Manfredi A., Paluello M. M., Baethge C. & Baldessarini R. J. (2006). Secular trends in first hospitalizations for major mood disorders with comorbid substance use. *International Journal of Neuropsychopharmacology* 9, 319-326.
- Mirandola M., Amadeo F., Dunn G. & Tansella M. (2004). The effect of previous psychiatric history on the cost of care: a comparison of various regression models. *Acta Psychiatrica Scandinavica* 109, 132-139.
- Morosini P., de Girolamo G., Picardi A. & Di Fabio F. (2001). National Mental Health Project (Scientific coordinator: Pierluigi Morosini). Final report. [Progetto Nazionale Salute Mentale (Responsabile scientifico: Pierluigi Morosini). Rapporto conclusivo.]. *Rapporti ISTISAN 01/27*, 1-240. Retrieved April 4, 2007, from <http://www.iss.it/publ/rapp/cont.php?id=408&lang=1&tipo=5&anno=2001>.
- Morselli P. L., Elgie R. & Cesana B. M. (2004). GAMIAN-Europe/BEAM survey II: Cross-national analysis of unemployment, family history, treatment satisfaction and impact of the bipolar disorder on life style. *Bipolar Disorders* 6, 487-497.
- Paccaloni M., Pozzan T., Rimondini M. & Zimmermann C. (2006). Le conoscenze e i bisogni informativi dei pazienti con diagnosi di schizofrenia esplorati attraverso il metodo dei focus group. [Knowledge and informative needs of patients with the diagnosis of schizophrenia, explored with focus group methods]. *Epidemiologia e Psichiatria Sociale* 15, 128-137.
- Pacitti F., Iannitelli A. & Bersani G. (2005). Studio naturalistico sull'impiego degli antipsicotici nella formulazione long-acting negli SPDC di Roma e del Lazio. *Rivista di Psichiatria* 40, 220-233.
- Pallanti S., Quercioli L. & Hollander E. (2004). Social anxiety in outpatients with schizophrenia: a relevant cause of disability. *American Journal of Psychiatry* 161, 53-58.
- Parabiaghi A., Barbato A., D'Avanzo B., Erlicher A. & Lora A. (2005). Assessing reliable and clinically significant change on Health of the Nation Outcome Scales: method for displaying longitudinal data. *Australian and New Zealand Journal of Psychiatry* 39, 719-725.
- Parabiaghi A., Bonetto C., Ruggeri M., Lasalvia A. & Leese M. (2006). Severe and persistent mental illness: a useful definition for prioritizing community-based mental health service interventions. *Social Psychiatry and Psychiatric Epidemiology* 41, 457-463.
- Pasquali M., De Sanctis R. & Spoletini A. (2004). Il Programma Gestione del Rischio Clinico: l'errore come occasione di crescita. Risultati preliminari in un Servizio Psichiatrico di Diagnosi e Cura [The Risk Management Program: the error as an opportunity of professional growth. Preliminary outcomes in a Hospital Psychiatric Unit]. *Rivista di Psichiatria* 39, 45-57.
- Pavia M., Nicotera G., Scaramuzza G. & Angelillo I. F. (2005). Suicide mortality in Southern Italy: 1998-2002. *Psychiatry Research* 134, 275-279.
- Percudani M., Barbui C., Beecham J. & Knapp M. (2004a). Routine outcome monitoring in clinical practice: service and non-service costs of psychiatric patients attending a Community Mental Health Centre in Italy. *European Psychiatry* 19, 469-477.
- Percudani M., Barbui C., Fortino I. & Petrovich L. (2004b). Antidepressant drug use in Lombardy, Italy: a population-based study. *Journal of Affective Disorders* 83, 169-175.
- Percudani M., Barbui C., Fortino I. & Petrovich L. (2004c). Antipsychotic drug prescribing in the elderly is cause for concern. *International Clinical Psychopharmacology* 19, 347-350.
- Percudani M., Barbui C., Fortino I. & Petrovich L. (2005a). Antidepressant drug prescribing among elderly subjects: a population-based study. *International Journal of Geriatric Psychiatry* 20, 113-118.
- Percudani M., Barbui C., Fortino I. & Petrovich L. (2005b). Epidemiology of first- and second-generation antipsychotic agents in Lombardy, Italy. *Pharmacopsychiatry* 38, 128-131.

- Percudani M., Barbui C., Fortino I., Tansella M. & Petrovich L. (2006). La prescrizione di antidepressivi e antipsicotici nella popolazione generale in Lombardia. [Antidepressant and antipsychotic drug prescribing in Lombardy]. *Epidemiologia e Psichiatria Sociale* 15, 59-70.
- Picardi A., de Girolamo G., Santone G., Falloon I., Fioritti A., Micciolo R., Morosini P. & Zanalda E. (2006a). The Environment and Staff of Residential Facilities: Findings from the Italian "Progres" National Survey. *Community Mental Health Journal* 42, 263-279.
- Picardi A., Rucci P., de Girolamo G., Santone G., Borsetti G. & Morosini P. (2006b). The quality of life of the mentally ill living in residential facilities: Findings from a national survey in Italy. *European Archives of Psychiatry and Clinical Neuroscience* 256, 372-81.
- Pigato G., Vignaga F. & Pavan L. (2005). Uso dei neurolettici convenzionali o atipici nella prima ospedalizzazione per psicosi acuta. *Rivista di Psichiatria* 40, 207-215.
- Pizzichi E., Corradetti V., Gherardelli S. & Satta L. (2005). Rilevazione della sindrome del burnout nei reparti SPDC, Nefrologia, Dialisi dell' Ospedale Sandro Pertini di Roma. *Rivista di Psichiatria* 40, 82-88.
- Pompili M., Rinaldi G., Lester D., Girardi P., Ruberto A. & Tatarelli R. (2006). Hopelessness and suicide risk emerge in psychiatric nurses suffering from burnout and using specific defense mechanisms. *Archives of Psychiatric Nursing* 20, 135-143.
- Pozzi G., Frustaci A., Janiri L. & Di Giannantonio M. (2006). The challenge of psychiatric comorbidity to the public services for drug dependence in Italy: A national survey. *Drug and Alcohol Dependence* 82, 224-230.
- Preti A., Incani E., Camboni M. V., Petretto D. R. & Masala C. (2006). Sexual abuse and eating disorder symptoms: the mediator role of bodily dissatisfaction. *Comprehensive Psychiatry* 47, 475-481.
- Priebe S. & Hoffmann K. (2002). Sozialpsychiatrie und gemeindenahere Versorgung. In *Kompendium Psychiatrie Psychotherapie Psychosomatische Medizin* (ed. H. J. Freyberger, W. Schneider and R. D. Stieglitz), pp. 339-348. Karger: Basel.
- Priebe S., Badescony A., Fioritti A., Hansson L., Kilian R., Torres-Gonzales F., Turner T. & Wiersma D. (2005). Reinstitutionalisation in mental health care: comparison of data on service provision from six European countries. *British Medical Journal* 330, 123-126.
- Puschner B., Born A., Giebler A., Helm H., Leese M., Bindman J. P., Gray R. J., Schene A., Kikkert M., Burti L., Marrella G. & Becker T. (2006). Adherence to Medication and Quality of Life in People With Schizophrenia: Results of a European Multicenter Study. *Journal of Nervous and Mental Disease* 194, 746-752.
- Quaglio G., Lugoboni F., Pajusco B., Fornasiero A., Lechi A., Mezzelani P., Pattaro C. & Des Jarlais D.C. (2004). Heterosexual relationships among heroin users in Italy. *Drug and Alcohol Dependence* 75, 207-213.
- Rimondini M., Del Piccolo L., Goss C., Mazzi M., Paccaloni M. & Zimmermann C. (2006). Communication skills in psychiatry residents-- how do they handle patient concerns? An application of sequence analysis to interviews with simulated patients. *Psychotherapy and Psychosomatics* 75, 161-169.
- Rinaldi P., Spazzafumo L., Mastriforti R., Mattioli P., Marvardi M., Polidori M. C., Cherubini A., Abate G., Bartorelli L., Bonaiuto S., Capurso A., Cucinotta D., Gallucci M., Giordano M., Martorelli M., Masaraki G., Nieddu A., Pettenati C., Putzu P., Tammaro V. A., Tomassini P. F., Vergani C., Senin U. & Mecocci P. (2005). Predictors of high level of burden and distress in caregivers of demented patients: results of an Italian multicenter study. *International Journal of Geriatric Psychiatry* 20, 168-174.
- Robone C., Pasquini M. & Biondi M. (2004). Drop-out e dati demografici nei Disturbi d' Ansia [Age and drop-out from treatment in Anxiety Disorders]. *Rivista di Psichiatria* 39, 101-104.
- Rocca P., Bellino S., Calvarese P., Marchiaro L., Patria L., Rasetti R. & Bogetto F. (2005). Depressive and negative symptoms in schizophrenia: Different effects on clinical features. *Comprehensive Psychiatry* 46, 304-310.
- Rossi A., Amadeo F., Sandri M. & Tansella M. (2005a). Determinants of once-only contact in a community-based psychiatric service. *Social Psychiatry and Psychiatric Epidemiology* 40, 50-56.
- Rossi A., Morgan V., Amadeo F., Sandri M., Tansella M. & Jablensky A. (2005b). Psychiatric out-patients seen once only in South Verona and Western Australia: a comparative case-register study. *Australian and New Zealand Journal of Psychiatry* 39, 414-422.
- Rossi A., Sandri M., Bianco M., Marsilio A., Tansella M. & Amadeo F. (2006). Factors associated with clinicians' dispositions in an outpatient psychiatric department. *Social Psychiatry and Psychiatric Epidemiology* 41, 832-840.
- Ruggeri M., Bisoffi G., Lasalvia A., Amadeo F., Bonetto C. & Biggeri A. (2004a). A longitudinal evaluation of two-year outcome in a community-based mental health service using graphical chain models. The South-Verona Outcome Project 9. *International Journal of Methods in Psychiatric Research* 13, 10-23.
- Ruggeri M., Lasalvia A., Tansella M., Bonetto C., Abate M., Thornicroft G., Allevi L. & Ognibene P. (2004b). Heterogeneity of outcomes in schizophrenia. 3-year follow-up of treated prevalent cases. *British Journal of Psychiatry* 184, 48-57.
- Ruggeri M., Leese M., Slade M., Bonizzato P., Fontecedro L. & Tansella M. (2004c). Demographic, clinical, social and service variables associated with higher needs for care in community psychiatric service patients. The South Verona Outcome Project 8. *Social Psychiatry and Psychiatric Epidemiology* 39, 60-68.
- Ruggeri M., Nose M., Bonetto C., Cristofalo D., Lasalvia A., Salvi G., Stefani B., Malchiodi F. & Tansella M. (2005). Changes and predictors of change in objective and subjective quality of life: multi-wave follow-up study in community psychiatric practice. *British Journal of Psychiatry* 187, 121-130.
- Ruggeri M., Salvi G., Perwanger V., Phelan M., Pellegrini N. & Parabiaghi A. (2006). Satisfaction with community and hospital-based emergency services amongst severely mentally ill service users: A comparison study in South-Verona and South-London. *Social Psychiatry and Psychiatric Epidemiology* 41, 302-309.
- Saltini A., Mazzi M., Del Piccolo L. & Zimmermann C. (2004). Decisional strategies for the attribution of emotional distress in primary care. *Psychological Medicine* 34, 729-739.
- Salvador-Carulla L., Tibaldi G., Johnson S., Scala E., Romero C. & Munizza C. (2005). Patterns of mental health service utilisation in Italy and Spain--an investigation using the European Service Mapping Schedule. *Social Psychiatry and Psychiatric Epidemiology* 40, 149-159.
- Sangiorgio P. (2004). Emergenze psichiatriche e psichiatria d'urgenza. Studio di follow up 1999-2001 nel Lazio: Considerazioni e proposte [Psychiatric emergencies and emergency psychiatry: Follow-up of 1999-2001 study in Lazio: Considerations and proposals]. *Psichiatria e Psicoterapia* 23, 126-141.
- Santone G., de Girolamo G., Falloon I., Fioritti A., Micciolo R., Picardi A. & Zanalda E. (2005). The process of care in residential facilities--a national survey in Italy. *Social Psychiatry and Psychiatric Epidemiology* 40, 540-550.
- Saxena S., Van Ommeren M., Lora A. & Saraceno B. (2006). Monitoring of mental health systems and services: comparison of four existing indicator schemes. *Social Psychiatry and Psychiatric Epidemiology* 41, 488-497.
- Scarnera P., Bosco A. & Urbano M. L. (2006). La prevenzione del burnout nelle attività terapeutico riabilitative psichiatriche: un'esperienza applicativa italiana [Prevention of burnout in psychiatric therapeutic-rehabilitative activities: an Italian application]. *Rivista di Psichiatria* 41, 378-387.
- Schiavone P., Dorz S., Conforti D., Scarso C. & Borgherini G. (2006). The clinical implications of DSM-IV personality disorder comorbidity in depressed inpatient: A replication study in an Italian setting. *Journal of Personality Disorders* 20, 1-8.
- Scocco P., Rapattoni M. & Fantoni G. (2006a). Nursing home institutionalization: a source of eustress or distress for the elderly? *International Journal of Geriatric Psychiatry* 21, 281-287.

- Scocco P., Rapattoni M., Fantoni G., Galuppo M., De Biasi F., de Girolamo G. & Pavan L. (2006b). Suicidal behaviour in nursing homes: a survey in a region of north-east Italy. *International Journal of Geriatric Psychiatry* 21, 307-311.
- Scuccimarra G., Velotti R., Canfora F., Facciuto A. & Mellucci S. (2005). Il ruolo dei fattori ambientali sullo sviluppo delle competenze adattive nei soggetti con disabilità intellettive [The role of the environmental factors on the development of adaptive skills in intellectual disabilities subjects]. *Epidemiologia e Psichiatria Sociale* 14, 108-115.
- Slade M., Leese M., Ruggeri M., Kuipers E., Tansella M. & Thornicroft G. (2004). Does meeting needs improve quality of life? *Psychotherapy and Psychosomatics* 73, 183-189.
- Slade M., McCrone P., Kuipers E., Leese M., Cahill S., Parabiaghi A., Priebe S. & Thornicroft G. (2006). Use of standardised outcome measures in adult mental health services: Randomised controlled trial. *British Journal of Psychiatry* 189, 330-336.
- Soscia F., Ruberto A., Girardi P., Torricelli F. D., Mannu J., Recchi G., Moïnzadeh Z., Smeriglio G., Narracci A., Lonta P., Antonelli E., Ceppi F., Uriati P., Perilli S., Rocco S., Di Matteo L., Kotzalidis G. D. & Tatarelli R. (2005). Approccio evidence-based alla valutazione del trattamento comunitario: Outcome di pazienti psichiatrici nelle comunità terapeutico-riabilitative del Lazio [Evidence-based approach to the assessment of community treatment: Outcome of psychiatric patients in therapeutic-rehabilitative communities in the Latium region, Italy]. *Psichiatria e Psicoterapia* 24, 273-290.
- Tarricone I., Leese M., Szmulker G. I., Bassi M. & Berardi D. (2006). The experience of carers of patients with severe mental illness: a comparison between London and Bologna. *European Psychiatry* 21, 93-101.
- Tello J. E., Jones J., Bonizzato P., Mazzi M., Amaddeo F. & Tansella M. (2005a). A census-based socio-economic status (SES) index as a tool to examine the relationship between mental health services use and deprivation. *Social Science and Medicine* 61, 2096-2105.
- Tello J. E., Mazzi M., Tansella M., Bonizzato P., Jones J. & Amaddeo F. (2005b). Does socioeconomic status affect the use of community-based psychiatric services? A South Verona case register study. *Acta Psychiatrica Scandinavica* 112, 215-223.
- Thornicroft G., Tansella M., Becker T., Knapp M., Leese M., Schene A. & Vazquez-Barquero J. L. (2004). The personal impact of schizophrenia in Europe. *Schizophrenia Research* 69, 125-132.
- Tomasi R., de Girolamo G., Santone G., Picardi A., Micciolo R., Semisa D. & Fava S. (2005). La prescrizione di psicofarmaci nelle strutture residenziali italiane [Drug prescription in Italian Residential Facilities]. *Epidemiologia e Psichiatria Sociale* 14, 77-90.
- Tomasi R., de Girolamo G., Santone G., Picardi A., Micciolo R., Semisa D. & Fava S. (2006). The prescription of psychotropic drugs in psychiatric residential facilities: a national survey in Italy. *Acta Psychiatrica Scandinavica* 113, 212-23.
- Tomei G., Cherubini E., Ciarrocca M., Biondi M., Rosati M. V., Tarsitani L., Capozzella A., Monti C. & Tomei F. (2006). Short communication: Assessment of subjective stress in the municipal police force at the start and at the end of the shift. *Stress and Health* 22, 239-247.
- Trequattrini A., Guidi L., Spadoni L., Mezzetti M. & Ciappi F. (2004). Studio osservazionale per la valutazione del carico assistenziale e familiare della demenza in pazienti con accesso a un centro diurno [Observational, evaluative study of assisted and familial care burdens of dementia in patients with access to an adult daycare center]. *Psichiatria e Psicoterapia* 23, 142-150.
- Van Os J. I. M., Altamura A. C., Bobes J., Gerlach J. E. S., Hellewell J. S. E., Kasper S., Naber D. & Robert P. (2004). Evaluation of the Two-Way Communication Checklist as a clinical intervention: Results of a multinational, randomised controlled trial. *British Journal of Psychiatry* 184, 79-83.
- Van Weeghel J., Van Audenhove C., Colucci M., Garanis Papadatos T., Liegeois A., McCulloch A., Muijen M., Norcio B., Ploumbidis D. & Bauduin D. (2005). The components of good community care for people with severe mental illnesses: Views of stakeholders in five European countries. *Psychiatric Rehabilitation Journal* 28, 274-281.
- Vanni A., Biancosino B., Marmai L., Zucconi M., Peron L., L.C., Marangoni C. & Grassi L. (2004). Correlati psicobiologici dei comportamenti aggressivi in pazienti psichiatrici: uno studio controllato [Psychobiological concomitants of aggressive behaviour among psychiatric inpatients: a control study]. *Rivista di Psichiatria* 39, 40-44.
- Velto F., Cuccaro A., Vendittelli N., Oricchio I., Scinto A., Dragani A. & Morosini P. (2005a). Valutazione di efficacia di un intervento strutturato cognitivo-comportamentale di gruppo per pazienti ricoverati. *Rivista di Psichiatria* 40, 353-359.
- Velto F., Raimondo A., Porzio C., Nugnes T. & Ciampone V. (2005b). Un'indagine sul pregiudizio e sugli stereotipi della malattia mentale in due comunità che differiscono per la "presenza/assenza" di strutture psichiatriche residenziali. [A survey on the prejudice and the stereotypes of mental illness in two communities with or without psychiatric Residential Facilities]. *Epidemiologia e Psichiatria Sociale* 14, 170-176.
- Velto F., Magliano L., Morosini P., Fasulo E., Pedicini G., Cascavilla I., Falloon I. & Dsm-Bn1. G. D. L. (2006). Randomised controlled trial of a behavioural family intervention: 1 year and 11-years follow-up. *Epidemiologia e Psichiatria Sociale* 15, 44-51.
- Zammuner V. L. & Galli C. (2005). Wellbeing: causes and consequences of emotion regulation in work settings. *International Review of Psychiatry* 17, 355-364.
- Zanetti T., Cenci L., Favaro A. & Santonastaso P. (2005). Evoluzione a medio termine dell'Anoressia Nervosa in pazienti che hanno abbandonato la terapia [Middle term outcome in Anorexia Nervosa outpatients who dropped out from therapy]. *Rivista di Psichiatria* 40, 149-155.
- Zeppigno P., Manzetti E., Valsesia R., Siliquini R., Ammirata G., De Donatis O., Usai C. & Torre E. (2005). Differences in suicide behaviour in the elderly: a study in two provinces of Northern Italy. *International Journal of Geriatric Psychiatry* 20, 769-775.