



University of Dundee

Faecal haemoglobin and faecal calprotectin as indicators of bowel disease in patients presenting to primary care with bowel symptoms

Mowat, Craig; Digby, Jayne; Strachan, Judith A.; Wilson, Robyn; Carey, Francis A.; Fraser, Callum G.; Steele, Robert

Published in:
Gut

DOI:
[10.1136/gutjnl-2015-309579](https://doi.org/10.1136/gutjnl-2015-309579)

Publication date:
2015

Document Version
Publisher's PDF, also known as Version of record

[Link to publication in Discovery Research Portal](#)

Citation for published version (APA):

Mowat, C., Digby, J., Strachan, J. A., Wilson, R., Carey, F. A., Fraser, C. G., & Steele, R. J. C. (2015). Faecal haemoglobin and faecal calprotectin as indicators of bowel disease in patients presenting to primary care with bowel symptoms. *Gut*. 10.1136/gutjnl-2015-309579

General rights

Copyright and moral rights for the publications made accessible in Discovery Research Portal are retained by the authors and/or other copyright owners and it is a condition of accessing publications that users recognise and abide by the legal requirements associated with these rights.

- Users may download and print one copy of any publication from Discovery Research Portal for the purpose of private study or research.
- You may not further distribute the material or use it for any profit-making activity or commercial gain.
- You may freely distribute the URL identifying the publication in the public portal.

Take down policy

If you believe that this document breaches copyright please contact us providing details, and we will remove access to the work immediately and investigate your claim.



OPEN ACCESS

ORIGINAL ARTICLE

Faecal haemoglobin and faecal calprotectin as indicators of bowel disease in patients presenting to primary care with bowel symptoms

Craig Mowat,¹ Jayne Digby,² Judith A Strachan,³ Robyn Wilson,³ Francis A Carey,⁴ Callum G Fraser,² Robert J C Steele²

¹Department of Gastroenterology, Ninewells Hospital & Medical School, Dundee, UK

²Centre for Research into cancer Prevention and Screening

³Department of Blood Sciences, Ninewells Hospital & Medical School, Dundee, UK

⁴Department of Pathology, Ninewells Hospital & Medical School, Dundee, UK

Correspondence to

Dr Craig Mowat, Department of Gastroenterology, Ninewells Hospital & Medical School, Dundee DD1 9SY, UK; craig.mowat@nhs.net

Received 12 March 2015

Revised 4 June 2015

Accepted 6 June 2015

ABSTRACT

Objective In primary care, assessing which patients with bowel symptoms harbour significant disease (cancer, higher-risk adenoma or IBD) is difficult. We studied the diagnostic accuracies of faecal haemoglobin (Fhb) and faecal calprotectin (FC) in a cohort of symptomatic patients.

Design From October 2013 to March 2014, general practitioners were prompted to request Fhb and FC when referring patients with bowel symptoms to secondary care. Faecal samples were analysed for haemoglobin (EIKEN OC-Sensor io) and calprotectin (BÜHLMANN Calprotectin ELISA). Patients triaged to endoscopy were investigated within 6 weeks. All clinicians and endoscopists were blind to the faecal test results. The diagnostic accuracies of Fhb and FC for identification of significant bowel disease were assessed.

Results 1043 patients returned samples. Fhb was detectable in 57.6% (median 0.4 µg/g, 95% CI 0.4 to 0.8; range 0–200). FC at 50 µg/g or above was present in 60.0%. 755 patients (54.6% women, median age 64 years (range 16–90, IQR 52–73)) returned samples and completed colonic investigations. 103 patients had significant bowel disease; the negative predictive values of Fhb for colorectal cancer, higher-risk adenoma and IBD were 100%, 97.8% and 98.4%, respectively. Using cut-offs of detectable Fhb and/or 200 µg/g FC detected two further cases of IBD, one higher-risk adenoma and no additional cancers.

Conclusions In primary care, undetectable Fhb is a good 'rule-out' test for significant bowel disease and could guide who requires investigation.

INTRODUCTION

Patients presenting to general practitioners (GPs) describing new bowel symptoms can be difficult to assess. Referral guidelines from the National Institute for Health and Care Excellence (NICE) highlight features that may suggest serious pathology.¹ These include rectal bleeding, a mass on examination, iron deficiency anaemia, but also non-specific symptoms such as a persistent change in bowel habit. The latest revision (due for publication in June 2015) concedes that symptoms have a positive predictive value (PPV) for colorectal cancer (CRC) of only 3–4%.² A detailed review and meta-analysis also concluded that symptoms alone are poor predictors of underlying pathology.³ In the absence of any reliable predictor of pathology,

Significance of this study

What is already known on this subject?

- ▶ Faecal haemoglobin (Fhb) concentrations rise as the severity of underlying neoplasia increases.
- ▶ Faecal immunochemical tests (FIT) for haemoglobin have superseded guaiac faecal occult blood tests (gFOBT) as the recommended initial test in bowel cancer screening programmes.
- ▶ Faecal calprotectin (FC) concentrations rise with inflammation and are useful for monitoring IBD in secondary care.
- ▶ To date, no studies have examined the utility of simultaneous quantitative estimates of Fhb and FC exclusively in primary care at the point of referral.

What are the new findings?

- ▶ Fhb and FC can be measured from a single sample of faeces collected at home.
- ▶ Undetectable Fhb measured in samples collected in primary care proved a good 'rule-out test' for significant bowel disease; cancer was excluded, and higher-risk adenomas and IBD were rare.
- ▶ FC at <50 µg/g ruled out IBD but missed cancer and adenomas.

How might it impact on clinical practice in the foreseeable future?

- ▶ We have shown that Fhb, measured with quantitative FIT, can be used in primary care at the point of referral as a reliable and objective predictor of underlying pathology.
- ▶ General practitioners have an objective tool to guide who requires further investigation in secondary care.

patients will continue to be referred to secondary care for investigation. Colonoscopy is the gold standard for detection of significant bowel disease; namely CRC, higher-risk adenoma (HRA, defined as ≥three adenomas or any adenoma ≥1 cm)⁴ and IBD. Low-risk adenomas (<1 cm) harbour a very low risk of CRC and are excluded from this category.⁵

Our health care system serves a population of around 400 000. Each year approximately 4000 patients are referred from primary care for

To cite: Mowat C, Digby J, Strachan JA, *et al.* Gut Published Online First: [please include Day Month Year] doi:10.1136/gutjnl-2015-309579

assessment of bowel symptoms via a dedicated referral portal, ensuring equity of access and a streamlined booking process. Referrals are triaged by consultant gastroenterologists; 75% are brought straight to investigation and the remainder seen in out-patient clinics. The percentage of referrals from GPs marked as 'urgent' or 'urgent suspected cancer' consistently runs at 35–40%. However, when patients undergo colonoscopy, the yield of significant bowel disease is low, with local audit revealing CRC in only 2% and IBD in 5%.

New means of assessing patients in primary care are urgently needed to help GPs determine which patients need rapid investigation and, in turn, ease pressure on secondary care services. Non-invasive faecal tests for blood and inflammation, already established in CRC screening programmes and IBD clinics respectively, may be helpful in this context.

Faecal immunochemical tests (FITs) for haemoglobin (Hb) are specific for intact human Hb and its early degradation products.⁶ There are two types of FIT available: *qualitative* (based upon immunochromatography and providing a positive or negative result) or *quantitative* (based upon latex agglutination immunoturbidimetry and giving a numerical result for the faecal Hb (FHb) concentration). *Quantitative* FITs have been recommended over *qualitative* to remove reader variability, inter-batch variability and to improve the diagnostic accuracy of the test.^{7–8} However, FITs made by different manufacturers are not identical.⁹ A range of FHb cut-off concentrations have been used for CRC screening programmes (15–67 µg/g).¹⁰ Data from Europe and Israel on *quantitative* FIT in patients under surveillance suggest high specificity and negative predictive values (NPVs) for CRC.^{11–13} Furthermore, a pilot study performed by our group has suggested that low FHb may be a good rule-out test for significant bowel disease in patients referred from primary care.¹⁴

Faecal calprotectin (FC) has been measured in *healthy* children and adults but is also a biomarker of inflammation; it is stable at room temperature, homogeneously distributed within faeces and correlates well with faecal excretion of indium¹¹¹-labelled neutrophil granulocytes—the gold standard measure of gut inflammation.^{15–16} It can be analysed by *qualitative* point-of-care immunochromatographic tests and *quantitative* ELISA tests. Commonly available assays use a FC cut-off of 50 µg/g. FC has a role in the assessment of suspected IBD and in the monitoring of patients with known IBD in secondary and tertiary hospital clinics.^{15–17} NICE recommends that FC tests should be available for GPs while acknowledging that further research is required.¹⁸

In this study, our aim was to study the diagnostic accuracies of quantitative FHb and FC tests in patients presenting to primary care with bowel symptoms.

METHODS

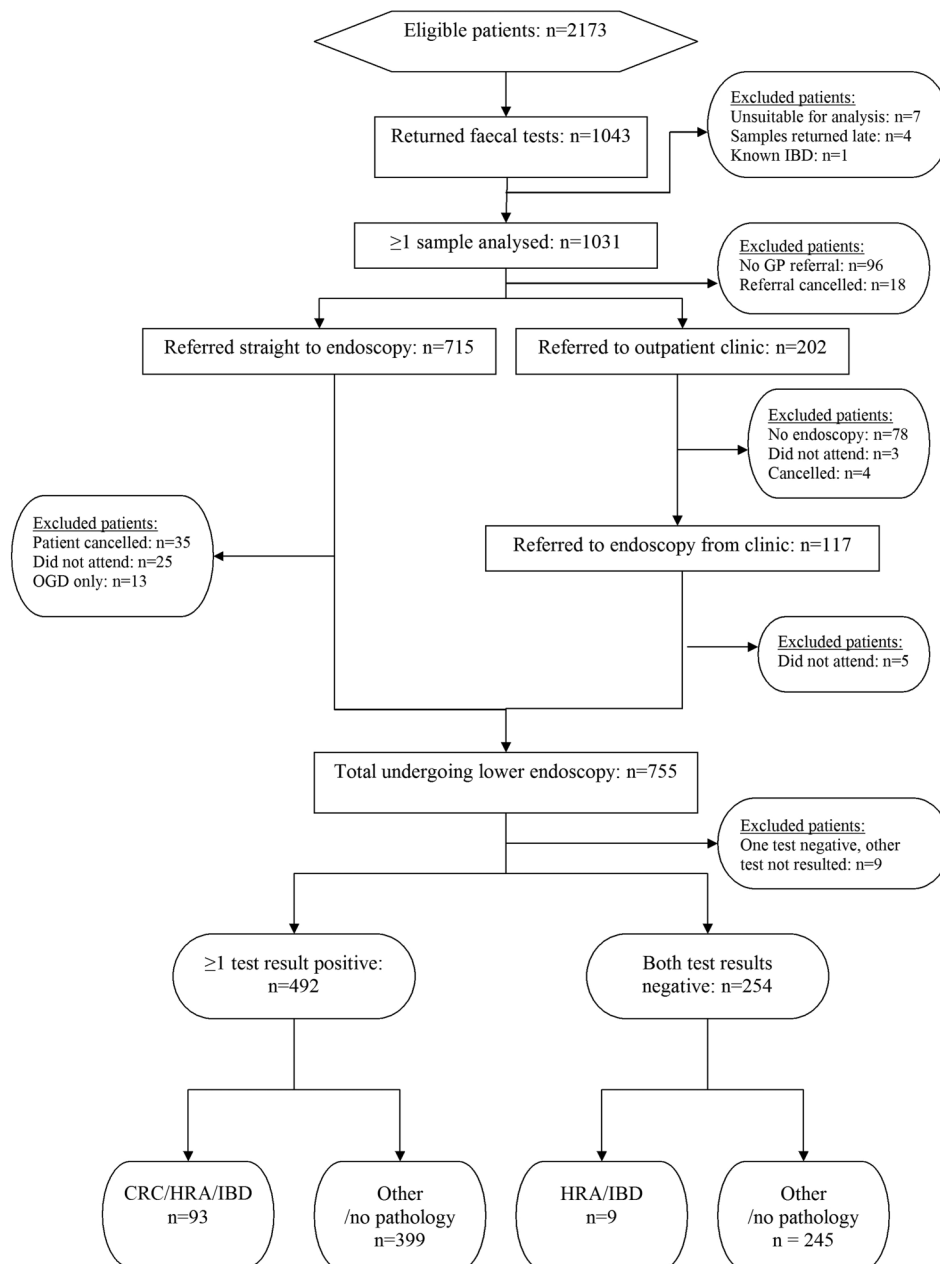
This prospective study gained the full support of GPs and was conducted following the STAndards for the Reporting of Diagnostic accuracy studies guidelines.¹⁹ All adult patients referred for investigation of bowel symptoms over a 6-month period from October 2013 to March 2014 were eligible. At the point of referring patients to the colorectal pathway, GPs were prompted to request FHb and FC tests alongside full blood count, urea and electrolytes and C reactive protein and record the presenting symptoms via the NHS Tayside electronic test requesting software. If patients had more than one presenting symptom, for the purposes of the present analysis they were attributed only one, in order of decreasing clinical importance as follows: rectal bleeding, anaemia, diarrhoea, altered bowel

habit, abdominal pain and weight loss. The total number of referrals and the urgency of the referral were recorded on the referral management software. Practice nurses distributed an EIKEN specimen collection device (for the FHb sample), a plain blue-capped faecal container (for the FC sample) and a patient instruction sheet to each participant. Patients were instructed to collect samples from a single faeces for both tests and to return the samples immediately to the GP surgery. The samples were returned at room temperature via the GP surgery routine sample collection service (a daily van courier service) to Blood Sciences, Ninewells Hospital and Medical School, and stored at 4°C (FHb) or –20°C (FC) prior to analysis to ensure stability. FHb measurement was performed using a single OC-Sensor io analyser (Eiken Chemical Co., Tokyo, Japan). Inter-run imprecision was assessed with quality control materials (Eiken) in each run: Co-efficients of Variation (CVs) were 4.6% at 25 µg/g and 3.9% at 93 µg/g. Any FHb sample that was reported by the analytical system as a positive numerical result greater than zero µg/g was considered as a 'detectable FHb'. FC was analysed after sample extraction using the Roche device (Roche Diagnostics, Burgess Hill, UK) using a quantitative ELISA Calprotectin EK-CAL (BÜHLMANN Laboratories, Switzerland) on a Dynex DS2 (Alpha Labs, Eastleigh, UK). Inter-run CVs were 5.3% at 37 µg/g and 4.7% at 152 µg/g. Samples with results above the upper analytical limits were not diluted and re-assayed but reported as greater than that upper concentration limit. FHb results were converted from the instrument generated ng/mL to the internationally recommended unit of µg/g by multiplying by 0.2.²⁰ The laboratory has a total quality management system in place and is accredited to ISO 15189 based standards. Patients referred to endoscopy were investigated within 6 weeks of referral. The endoscopy units participate in the accreditation scheme of the Joint Accreditation Group on GI Endoscopy. Participating clinicians and endoscopists were blind to the faecal test results. All findings were recorded on the endoscopy reporting system by the endoscopist. The diagnoses of CRC, HRA and IBD were confirmed following assessment by a gastrointestinal pathologist. Clinical outcomes were collected for all patients who completed the tests, and the diagnostic accuracies of FHb and FC for identification of significant bowel disease were examined. MedCalc statistical software (MedCalc Software, Mariakerke, Belgium) was used for all calculations and to produce distribution plots for both faecal test results.

RESULTS

In total, 2189 patients were referred for investigation. Also, 1032 (47.1%) referrals were either 'urgent' or 'urgent suspected cancer'. Of those referred, 1043 patients returned faecal samples; 12 patients were excluded (seven in whom neither faecal sample was suitable for analysis, four who returned samples outside the study period and one patient with known IBD) leaving 1031 patients (47.1%) who formed the study cohort (figure 1). The prevalence of referred symptoms within this cohort was altered bowel habit (42.7%), rectal bleeding (33.9%), diarrhoea (16.8%), abdominal pain (11.0%), anaemia (8.7%), weight loss (0.9%) and a palpable mass (0.3%). Eight patients submitted FHb samples that were spoiled or unsuitable for analysis. Thirty-nine patients returned FC samples that were classed as insufficient or unsuitable for analysis. FHb was detectable in 57.6% of all samples submitted (median 0.4 µg/g, 95% CI 0.4 to 0.8; range 0 to >200 µg/g). Using a FHb cut-off of 10 µg/g, the test was positive in 25.2% of samples. FC >50 µg/g was present in 60.0% of all faecal samples (median 69 µg/g; range 10 to >600 µg/g).

Figure 1 Study flow diagram. CRC, colorectal cancer; GP, general practitioner; HRA, higher-risk adenoma.



A total of 755 patients (54.7% women, median age 64 years (range 16–90, IQR 52–73)) returned faecal samples and completed bowel investigations and were included in the analysis of faecal test performance. The most common findings at colonoscopy were normal in 241 (33.2%), diverticular disease in 190 (25.2%), haemorrhoids in 98 (13.0%), low-risk adenoma in 65 (8.6%), HRA in 41 (5.4%), IBD in 34 (4.5%) and CRC in 28 patients (3.7%). The PPV of referral symptoms for a diagnosis of CRC were palpable mass 50.0%, weight loss 14.3%, anaemia 9.0%, rectal bleeding 4.3%, abdominal pain 3.6%, diarrhoea 2.4% and altered bowel habit 2.2%. Rectal bleeding had a PPV of 21.0% for any significant bowel disease (table 1).

Figures 2 and 3 display the distribution of FHb and FC from the 1023 and 993 samples, respectively, which were suitable for analysis. Results are displayed according to the findings of bowel investigations. In those patients with CRC, the median FHb was 130 $\mu\text{g/g}$ (95% CI 52 to 200, range 0.8 to >200 $\mu\text{g/g}$). Three patients with CRC had FHb below 10 $\mu\text{g/g}$. The prediction of significant bowel disease was therefore based on the finding of any detectable FHb.

Faecal test performance

The advantage of using quantitative assays is that cut-off concentrations that trigger a positive test result can be altered to regulate positivity rates and diagnostic accuracy (table 2).

Selecting a cut-off of detectable FHb, the positivity rate in those completing investigations was 58.3%. The PPV for any significant bowel disease was 20.6%. However, the NPV for CRC, HRA and IBD were 100%, 97.8% and 98.4%, respectively: 12 of 102 (11.8%) cases of significant bowel disease had undetectable FHb (seven HRA, five IBD). Interestingly, 256 of the 755 patients described rectal bleeding, but 87 (34.0%) of these had undetectable FHb. In this subgroup, only 3.4% had significant bowel disease (two with HRA, one with IBD), and the most common finding was haemorrhoids (38.0%).

Selecting a FC cut-off of 50 $\mu\text{g/g}$ (often used in differentiating possible IBD from irritable bowel syndrome), the positivity rate was 62.0%. The PPV for any significant bowel disease was 16.9% and the PPV for IBD was 6.4%. On the other hand, the NPV for IBD was 98.9%. However, 25 cases of significant

Table 1 Symptom prevalence and positive predictive values for colorectal cancer (CRC), higher- risk adenoma (HRA) and IBD in patients referred from primary care who were investigated for bowel symptoms (n=755)

	Total		CRC		HRA		IBD		CRC+HRA+IBD	
	n	%	n	%	n	%	n	%	n	%
Prevalence of symptoms										
Altered bowel habit	323	42.8	7	25.0	13	31.7	7	20.6	27	26.2
Rectal bleeding	258	34.2	11	39.3	20	48.8	23	67.6	54	52.4
Diarrhoea	127	16.8	3	10.7	6	14.6	9	26.5	18	17.5
Anaemia	67	8.9	6	21.4	2	4.9	2	5.9	10	9.7
Abdominal pain	83	11.0	3	10.7	5	12.2	2	5.9	10	9.7
Weight loss	7	0.9	1	3.6	0	0.0	0	0.0	1	1.0
Mass	2	0.3	1	3.6	0	0.0	0	0.0	1	1.0
Number of patients	755		28		41		34		103	
Positive predictive values										
Altered bowel habit	323	42.8	7	2.2	13	4.0	7	2.2	27	8.4
Rectal bleeding	258	34.2	11	4.3	20	7.8	23	8.9	54	21.0
Diarrhoea	127	16.8	3	2.4	6	4.7	9	7.1	18	14.2
Anaemia	67	8.9	6	9.0	2	3.0	2	3.0	10	15.2
Abdominal pain	83	11.0	3	3.6	5	6.0	2	2.4	10	12.0
Weight loss	7	0.9	1	14.3	0	0.0	0	0.0	1	14.3
Mass	2	0.3	1	50.0	0	0.0	0	0.0	1	50.0
Number of patients	755		28		41		34		103	

bowel disease had FC below this cut-off (5 CRC, 17 HRA, 3 IBD).

Selecting a combined cut-off of detectable FHb and/or FC at 50 µg/g generated a high positivity rate of 80.5%. The PPV for any significant bowel disease was 16.5%. However, only four cases of significant bowel disease were undetected using this strategy (three HRA, one IBD).

Raising the FC cut-off to an arbitrary 200 µg/g, the positivity rate fell to 25.9%, the PPV for IBD increased to 12.2%, yet the NPV for IBD remained at 98.3%. However, more than half of the cases of CRC remained undetected.

Selecting a combined cut-off of detectable FHb and/or FC 200 µg/g generated a positivity rate of 66.0%. The PPV for any significant bowel disease was 18.9%. At this combined cut-off, the NPV for CRC, HRA, IBD were 100%, 97.6% and 98.8%, respectively. Nine cases of significant bowel disease were undetected (six HRA, three IBD).

DISCUSSION

This study demonstrates that patients presenting to primary care with bowel symptoms can be assessed with faecal tests and the results can help determine whether further investigation is

Figure 2 Distribution of faecal haemoglobin concentration (FHb) in patient samples collected in primary care according to the results of bowel investigations (n=1023). HRA, higher-risk adenoma

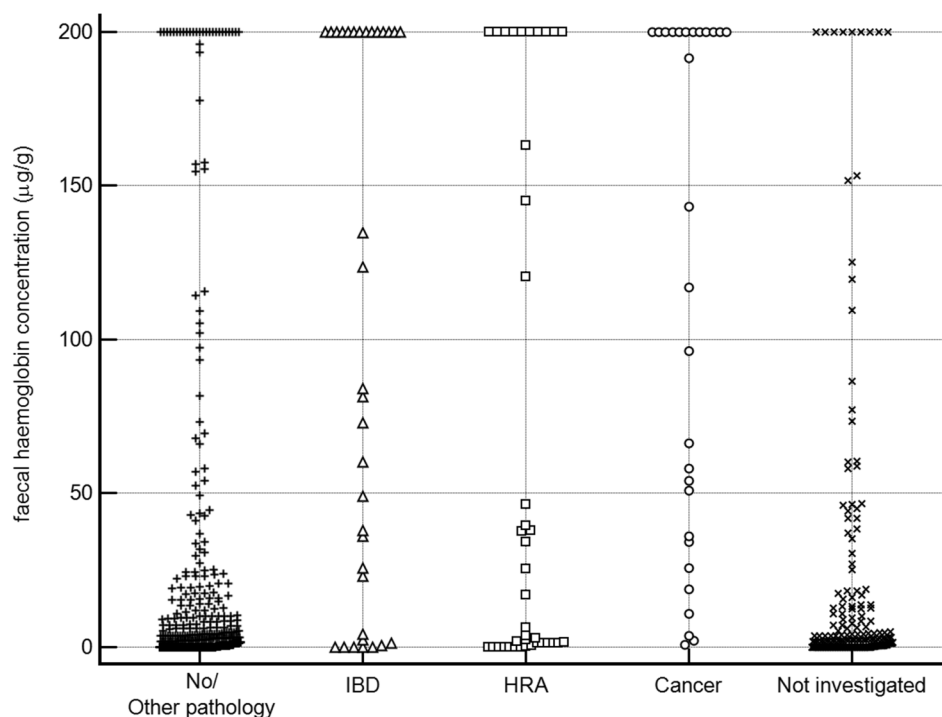
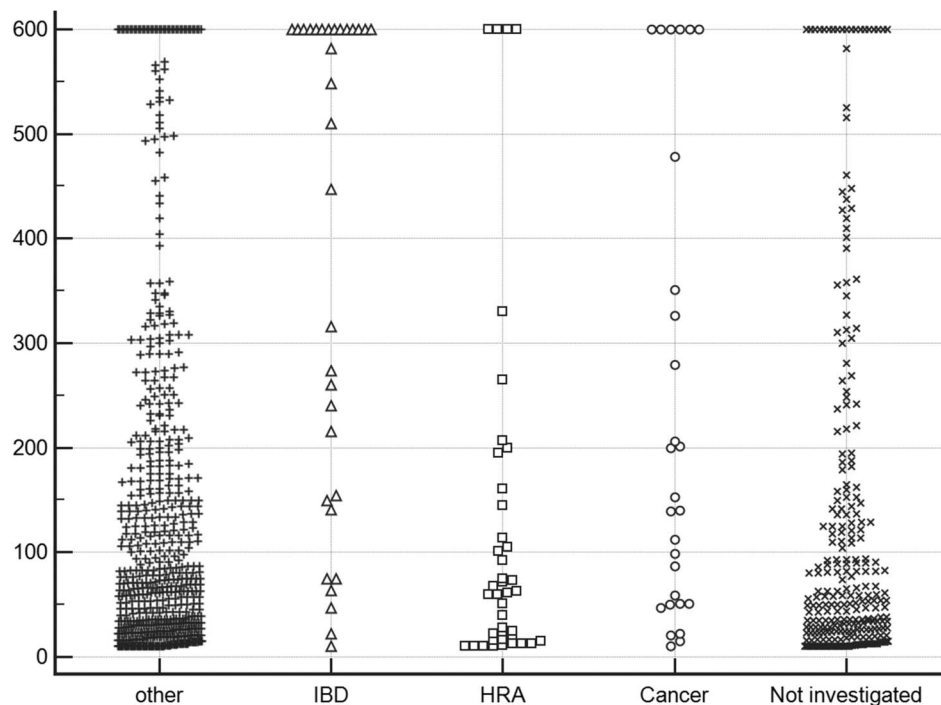


Figure 3 Distribution of faecal calprotectin concentrations in patient samples collected in primary care according to the results of bowel investigations (n=993). HRA, higher-risk adenoma.



required. Using detectable FHB as the criterion identified 58.3% as having a positive test result and gave a PPV of 20.6% for significant bowel disease. More importantly, undetectable FHB effectively ruled out the possibility of underlying CRC and the possibility of either HRA or IBD was rare. FHB was superior to FC in this setting; adding in FC at a cut-off of 200 µg/g identified a further 7.7% with positive tests, but investigation of these additional patients identified only two further cases of IBD, one HRA and no additional CRC.

Few studies have assessed the diagnostic accuracy of faecal tests exclusively within primary care. FC was tested in subjects aged 18–45 years: a cut-off of 150 µg/g yielded an NPV of 97% for organic bowel disease but, in this cohort, the prevalence of CRC was only 0.1%.²¹ A retrospective population-based study from Sweden described the impact of a *qualitative* FIT with an FHB cut-off of 25 µg/g on the diagnosis of CRC and adenomas with high-grade dysplasia. A negative test delayed further investigation and missed about 15% of CRC.²² FHB measured with a *qualitative* FIT with a cut-off of 6 µg/g combined with either qualitative or quantitative FC at a cut-off of 50 µg/g was studied in 386 patients referred from primary care and gave an NPV of 97.0% for organic bowel disease: this study was limited by small numbers, studying non-consecutive referrals, inclusion of diverticulitis within organic bowel disease, and by recruiting only 19.9% of subjects at the point of referral in primary care.²³ FHB at a cut-off of 20 µg/g was superior to both the NICE and SIGN guidelines in predicting CRC in 787 symptomatic patients referred from primary and secondary care for colonoscopy: this was a post hoc analysis of a multicentre study, the prevalence of CRC was 12.3% and only 17.5% were recruited within primary care.²⁴ Parente and others studied 280 patients awaiting colonoscopy for suspicion of CRC with FHB at a cut-off equivalent to 20 µg/g on a different FIT quantitative analytical system (HM-JACK, Kyowa-Medex Co., Tokyo, Japan) and reported an NPV of 92.0% for CRC plus advanced (higher-risk) adenoma. Adding FC at 50 µg/g produced an NPV of 94.4%. Those with IBD were excluded.²⁵ A further small study reported the benefit of a point-of-care qualitative FHB test with

a cut-off of 8 µg/g faeces in the assessment of patients attending a Rapid Access Clinic in secondary care and, although the authors concentrated on the use of this as a rule-in test for CRC, the NPV for CRC was 100%.²⁶

It should be noted that quantitative and qualitative FIT analytical systems do not give identical results, even if the results are reported in the recommended units of µg/g:²⁰ this applies to both qualitative and quantitative FIT.^{9, 27} There are a number of plausible reasons for this including difference in the mass of faeces collected, the volume of buffer in the specimen collection device, the stability of Hb in the device and, probably most importantly, the specificity of the antibodies used to capture the Hb and early degradation products for subsequent analysis by immunochromatography or immunoturbidimetry.²⁸

It is becoming clear from recent studies in CRC screening programmes that there are marked gender differences; it is well established that men have a greater prevalence of colorectal neoplasia, but it is now also clear that men harbour higher concentrations of FHB than women.²⁹ We did not design our study to examine gender differences; however, we did note a trend for more significant bowel disease in men (15.5%) versus women (11.9%). Furthermore, with a cut-off of any detectable FHB, the PPVs for CRC, HRA plus IBD were higher in men than women (22.6% vs 18.3%), but there was no difference in NPVs. While there is a cogent argument to consider gender-specific FHB cut-offs in asymptomatic population bowel screening programmes, gender differences in PPV become irrelevant in a symptomatic patient with detectable FHB because invasive investigations would be required in all.

The strength of our study is that it was conducted in a single health care organisation in which all referrals from primary care enter through a common referral pathway, removing selection bias. Faecal tests were requested at the point of referral and samples reached the laboratory via a daily delivery van service. The mean ambient temperature in this region of Scotland was never >16°C during the study: therefore, FHB degradation during transport would be minimal.^{9, 30} The study cohort appeared to be typical of primary care referrals with 3.7%

Table 2 Performance of faecal haemoglobin concentration (Fhb) and faecal calprotectin concentration (FC) in the detection of colorectal cancer (CRC), higher-risk adenoma (HRA) and IBD using cut-offs at different concentrations (units: $\mu\text{g/g}$) (n=755)

	Fhb ≥ 10	FC ≥ 50	Fhb detectable	Fhb detectable and/or FC ≥ 50	FC ≥ 200	Fhb detectable and/or FC ≥ 200
Positivity rate	23.5%	62.0%	58.3%	80.5%	25.9%	66.0%
CRC (n=28)						
Number of cases	28	28	28	28	28	28
True positives	25	23	28	28	13	28
False negatives	3	5	0	0	15	0
False positives	151	427	409	573	175	464
True negatives	571	271	313	146	523	254
PPV	14.2%	5.1%	6.4%	4.7%	6.9%	5.7%
NPV	99.5%	98.2%	100%	100%	97.2%	100%
Sensitivity	89.3%	82.1%	100%	100%	46.4%	100%
Specificity	79.1%	38.8%	43.4%	20.3%	74.9%	35.4%
HRA (n=41)						
Number of cases	40*	41	40	41	41	40
True positives	20	24	33	38	8	34
False negatives	20	17	7	3	33	6
False positives	156	426	404	563	180	458
True negatives	554	259	306	143	505	248
PPV	11.4%	5.3%	7.6%	6.3%	4.3%	6.9%
NPV	96.5%	93.8%	97.8%	97.9%	93.8%	97.6%
Sensitivity	50.0%	58.5%	82.5%	92.7%	19.5%	85.0%
Specificity	78.0%	37.8%	43.1%	20.3%	73.7%	35.1%
IBD (n=34)						
Number of cases	34	32*	34	34	32	34
True positives	25	29	29	33	23	31
False negatives	9	3	5	1	9	3
False positives	151	421	408	568	165	461
True negatives	565	273	308	145	529	251
PPV	14.2%	6.4%	6.7%	5.5%	12.2%	6.3%
NPV	98.4%	98.9%	98.4%	99.3%	98.3%	98.8%
Sensitivity	73.5%	90.6%	85.3%	97.1%	71.9%	91.2%
Specificity	78.9%	39.3%	43.0%	20.3%	76.2%	35.3%
CRC+HRA+IBD						
Number of cases	102	101*	102	103	101	102
True positives	70	76	90	99	44	93
False negatives	32	25	12	4	57	9
False positives	106	374	347	502	144	399
True negatives	542	251	301	142	481	245
PPV	39.8%	16.9%	20.6%	16.5%	23.4%	18.9%
NPV	94.4%	90.9%	96.2%	97.3%	89.4%	96.5%
Sensitivity	68.6%	75.2%	88.2%	96.1%	43.6%	91.2%
Specificity	83.6%	40.2%	46.4%	22.0%	77.0%	38.0%

*One case of HRA had Fhb sample unsuitable for analysis. Two cases of IBD had FC samples unsuitable for analysis. NPV, negative predictive value.

having underlying CRC, and rectal bleeding having a PPV of 4.3% for CRC.

In population screening and in IBD clinics, Fhb and FC cut-offs have been proposed. With symptomatic patients in primary care for whom the underlying diagnosis remains to be determined, we could not anticipate what the appropriate cut-off concentrations might be. We noted three cases of CRC in this cohort in whom Fhb fell below the 10 $\mu\text{g/g}$ cut-off concentration commonly used in CRC screening programmes and qualitative FIT. In consequence, we chose a cut-off of any detectable Fhb for test performance analysis since no cases of CRC would be missed. When faced with a symptomatic patient, an undetectable Fhb would reassure a GP that significant bowel

disease would be rare. With FC at the widely used cut-off of 50 $\mu\text{g/g}$, this proved to be an effective 'rule-out' test for IBD, but would miss almost a fifth of CRC cases. This would not reassure GPs or patients. If FC is combined with Fhb, only one case of IBD was missed, but the vast majority of patients would have a positive test (80.5%) and require further investigation. Raising the FC cut-off to 200 $\mu\text{g/g}$, combined with detectable Fhb, dropped the combined positivity rate to a manageable 66.0%. However, only three more cases of significant but non-malignant bowel disease were detected at the expense of investigating 7.7% more referrals than using Fhb alone.

At present, in the absence of any reliable predictor of pathology, the vast majority of referrals from primary care for

assessment of colorectal symptoms undergo invasive investigations but the yield of pathology is low. This study demonstrates that FHB and FC can provide objective information on the likelihood of significant underlying pathology but cannot replace common sense. Patients with anaemia or a mass require investigation irrespective of faecal test results. However, 34.0% with rectal bleeding had undetectable FHB; upon investigation haemorrhoids were the most common finding and the incidence of significant bowel disease was only 3.4%. Based on our findings, patients presenting to primary care with bowel symptoms could be tested with FHB and FC in the knowledge that approximately one-third of patients who would normally be referred for investigation will have negative test results and do not require immediate invasive investigations. In our health care organisation, this translates into almost 1200 patients per year who are highly likely to have no significant bowel disease and do not require immediate investigation. If FHB was the sole faecal test, that figure would rise to almost 1400. Moreover, using one only test has advantages since FIT specimen collection devices are more user-friendly, FHB is cheaper to analyse and has a more rapid turnaround time.

In summary, this study demonstrates that non-invasive faecal tests requested in primary care provide a reliable prediction of the absence of significant bowel disease. FHB is superior to FC and enables, with a single faecal test, an objective assessment of the need and urgency of further investigation.

Acknowledgements Iain McElarney of MAST Group (<http://www.mastgrp.com>) helped in the design and production of the patient information sheets. Lynne Taylor, NHS Tayside Blood Sciences, distributed faecal test packs to GP practices and logged specimens on return. Paula McDonald, Laboratory Team Leader, Scottish Bowel Screening Centre, provided technical assistance with the EIKEN io analyser.

Contributors CM, JAS and RJCS designed, planned and conducted the study. RW analysed the faecal samples. JD performed the statistical analysis and produced the figures and tables. All authors contributed to data interpretation and writing of the paper. CM wrote the final draft, which was approved by all authors.

Funding The study was funded by the Detect Cancer Early initiative of the Scottish Government. JD was supported by a grant from Tenovus.

Competing interests CGF has undertaken consultancy with Immunostics, Ocean, New Jersey, USA; Mode Diagnostics, Glasgow, Scotland; and Kyowa-Medex Co., Tokyo, Japan; and has received travel support from Alpha Labs, Eastleigh, UK.

Ethics approval East of Scotland REC.

Provenance and peer review Not commissioned; externally peer reviewed.

Open Access This is an Open Access article distributed in accordance with the Creative Commons Attribution Non Commercial (CC BY-NC 4.0) license, which permits others to distribute, remix, adapt, build upon this work non-commercially, and license their derivative works on different terms, provided the original work is properly cited and the use is non-commercial. See: <http://creativecommons.org/licenses/by-nc/4.0/>

REFERENCES

- NICE clinical guideline 27; Referral guidelines for suspected cancer. <http://www.nice.org.uk/guidance/cg27/resources/guidance-referral-guidelines-for-suspected-cancer-pdf> (accessed May 2015).
- NICE guideline; Suspected cancer: recognition and management of suspected cancer in children, young people and adults. <http://www.nice.org.uk/guidance/indevelopment/gid-cgwave0618> (accessed May 2015).
- Jellema P, van der Windt DAWM, Bruinvels DA, et al. Value of symptoms and additional diagnostic tests for colorectal cancer in primary care; systematic review and meta-analysis. *BMJ* 2010;340:c1269.
- Lieberman DA, Rex DK, Winawer SJ, et al. Guidelines for colonoscopy surveillance after screening and polypectomy: a consensus update by the US Multi-Society Task Force on colorectal cancer. *Gastroenterology* 2012;143:844–57.
- Atkin WS, Morson BC, Cuzick J. Long-term risk of CRC after excision of recto-sigmoid adenomas. *NEJM* 1992;326:658–62.
- Allison JE, Fraser CG, Halloran SP, et al. Population screening for colorectal cancer means getting FIT: the past, present and future of colorectal cancer screening using the Faecal Immunochemical Test for Hemoglobin (FIT). *Gut Liver* 2014;8:117–30.
- Duffy MJ, van Rossum LGM, van Turenhout ST, et al. Use of faecal markers in screening for colorectal neoplasia: a European Group on Tumour Markers (EGTM) position paper. *Int J Cancer* 2011;128:3–11.
- Fraser CG, Allison JE, Young GP, et al. Quantitation of hemoglobin improves faecal immunochemical tests for noninvasive screening. *Clin Gastroenterol Hepatol* 2013;11:839–40.
- Young GP, Symonds EL, Allison JE, et al. Advances in faecal occult blood tests: the FIT revolution. *Dig Dis Sci* 2015;60:609–22.
- Chiang TH, Chuang SL, Chen SL, et al. Difference in performance of faecal immunochemical tests with the same hemoglobin cutoff concentration in a nationwide colorectal cancer screening program. *Gastroenterology* 2014;147:1317–26.
- Hazazi R, Rozen P, Leshno M, et al. Can patients at high risk for significant colorectal neoplasms and having normal quantitative faecal occult blood test postpone elective colonoscopy? *Aliment Pharmacol Ther* 2010;31:523–33.
- Terhaar sive Droste JS, van Turenhout ST, Oort FA, et al. Faecal Immunochemical test accuracy in patients referred for surveillance colonoscopy: a multi-centre cohort study. *BMC Gastroenterol* 2012;12:94.
- Castro I, Cubiella J, Rivera C, et al. Faecal Immunochemical test accuracy in familial risk colorectal cancer screening. *Int J Cancer* 2014;134:367–75.
- McDonald PJ, Digby J, Innes C, et al. Low faecal haemoglobin concentration potentially rules out significant colorectal disease. *Colorectal Dis* 2013;15:e151–9.
- Sipponen T. Diagnostics and prognostics of inflammatory bowel disease with faecal neutrophil-derived biomarkers calprotectin and lactoferrin. *Dig Dis* 2013;31:336–44.
- Roseth AG, Schmidt PN, Fagerhol MK. Correlation between faecal excretion of Indium-111-labelled granulocytes and calprotectin, a granulocyte marker protein, in patients with inflammatory bowel disease. *Scand J Gastroenterol* 1999;34:50–4.
- van Rheenen PF, Van de Vijver E, Fidler V. Faecal calprotectin for screening of patients with suspected inflammatory bowel disease: diagnostic meta-analysis. *BMJ* 2010;341:c3369.
- NICE Diagnostics guidance (DG11). Faecal calprotectin diagnostic tests for inflammatory diseases of the bowel. <https://www.nice.org.uk/guidance/dg11> (accessed Dec 2014).
- Standards for the reporting of diagnostic accuracy studies. <http://www.stard-statement.org/> (last accessed December 2014)
- Fraser CG, Allison JE, Halloran SP, et al. A proposal to standardize reporting units for faecal immunochemical tests for hemoglobin. *J Natl Cancer Inst* 2012;104:610–14.
- Pavlidis P, Chedgy FJQ, Tibble JA. Diagnostic accuracy and clinical application of faecal calprotectin in adult patients presenting with gastrointestinal symptoms in primary care. *Scand J Gastroenterol* 2013;48:1048–54.
- Högberg C, Karlung P, Rutegård J, et al. Immunochemical faecal occult blood tests in primary care and the risk of delay in the diagnosis of colorectal cancer. *Scand J Prim Health Care* 2013;31:209–14.
- Kok L, Elias SG, Witteman BJ, et al. Diagnostic accuracy of point-of-care faecal calprotectin and immunochemical occult blood tests for diagnosis of organic bowel disease in primary care: the Cost-Effectiveness of a Decision Rule for Abdominal Complaints in Primary Care (CEDAR) study. *Clin Chem* 2012;58:989–8.
- Cubiella J, Salve M, Diaz-Ondina M, et al. Diagnostic accuracy of the faecal immunochemical test for colorectal cancer in symptomatic patients; comparison with NICE and SIGN referral criteria. *Colorectal Dis* 2014;16:0273–82.
- Parente F, Marino B, Ilardo A, et al. A combination of faecal tests for the detection of colon cancer: a new strategy for an appropriate selection of referrals to colonoscopy? A prospective multicentre Italian study. *Eur J Gastroenterol Hepatol* 2012;24:1145–52.
- Kaul A, Shah A, Magill FH, et al. Immunological faecal occult blood testing: a discriminatory test to identify colorectal cancer in symptomatic patients. *Int J Surg* 2013;11:329–31.
- Allison JE, Fraser CG, Halloran SP, et al. Comparing faecal immunochemical tests: improved standardization is needed. *Gastroenterology* 2012;142:422–4.
- Rapi S, Rubeca T, Fraser CG. How to improve the performances of Faecal Immunological Tests (FIT): Need for standardization of the sampling and pre-analytical phases and revision of the procedures for comparison of methods. *Int J Biol Markers* 2015;30:e127–31.
- McDonald PJ, Strachan JA, Digby J, et al. Faecal haemoglobin concentrations by gender and age: implications for population-based screening for colorectal cancer. *Clin Chem Lab Med* 2012;50:935–40.
- WeatherSpark Beautiful weather graphs and maps. <https://weatherspark.com/#!dashboard:ws=28758> (accessed Mar 2015).



Faecal haemoglobin and faecal calprotectin as indicators of bowel disease in patients presenting to primary care with bowel symptoms

Craig Mowat, Jayne Digby, Judith A Strachan, Robyn Wilson, Francis A Carey, Callum G Fraser and Robert J C Steele

Gut published online August 20, 2015

Updated information and services can be found at:
<http://gut.bmj.com/content/early/2015/08/20/gutjnl-2015-309579>

These include:

References

This article cites 25 articles, 3 of which you can access for free at:
<http://gut.bmj.com/content/early/2015/08/20/gutjnl-2015-309579#BIBL>

Open Access

This is an Open Access article distributed in accordance with the Creative Commons Attribution Non Commercial (CC BY-NC 4.0) license, which permits others to distribute, remix, adapt, build upon this work non-commercially, and license their derivative works on different terms, provided the original work is properly cited and the use is non-commercial. See: <http://creativecommons.org/licenses/by-nc/4.0/>

Email alerting service

Receive free email alerts when new articles cite this article. Sign up in the box at the top right corner of the online article.

Topic Collections

Articles on similar topics can be found in the following collections

[Open access](#) (221)
[Colon cancer](#) (1495)

Notes

To request permissions go to:
<http://group.bmj.com/group/rights-licensing/permissions>

To order reprints go to:
<http://journals.bmj.com/cgi/reprintform>

To subscribe to BMJ go to:
<http://group.bmj.com/subscribe/>