

Objective examination of nutrition labels 1

RUNNING HEAD: OBJECTIVE EXAMINATION OF NUTRITION LABELS

An objective examination of consumer perception of nutrition information based on healthiness ratings and eye movements

Gary Jones¹ and Miles Richardson²

¹Nottingham Trent University, ²University of Derby

Keywords: nutrition, nutrition labels, eye movements, traffic lights

Send correspondence about this article to:

Gary Jones

Psychology Department

Nottingham Trent University

Burton Street

Nottingham NG1 4BU

UK

E-mail: gary.jones@ntu.ac.uk

Abstract

Objective Previous research on nutrition labelling has mainly used subjective measures. This study examines the effectiveness of two types of nutrition label using two objective measures: eye movements and healthiness ratings.

Design Eye movements were recorded while participants made healthiness ratings for two types of nutrition label: standard and standard plus the Food Standards Agency's 'traffic light' concept.

Setting University of Derby, UK.

Subjects 92 participants (mean age 31.5 years) were paid for their participation. None of the participants worked in the areas of food or nutrition.

Results For the standard nutrition label, participant eye movements lacked focus and their healthiness ratings lacked accuracy. The traffic light system helped to guide the attention of the consumer to the important nutrients and improved the accuracy of the healthiness ratings of nutrition labels.

Conclusions Consumer's have a lack of knowledge regarding how to interpret nutrition information for standard labels. The traffic light concept helps to ameliorate this problem by indicating important nutrients to pay attention to.

Introduction

It is widely accepted that current eating habits in general tend to be less than healthy¹. For example, the financial burden on the NHS of food related ill health is more than double that related to smoking². One reason for this is the increase in consumption of pre-packaged foods and a subsequent reduction in consumers who cook food every day³. A change in people's dietary approach is therefore crucial in order to provide a healthier diet⁴. One area where consumers can be informed of dietary information is in the labelling of nutrition on foods, so that consumers can make an informed choice regarding what they eat.

However, Black and Rayner's⁵ influential study of nutrition labels found that people often do not use nutrition information, or just use one item on the nutrition label (usually fat) to guide judgements on the healthiness of a foodstuff. Furthermore, people found nutrition information difficult to comprehend and use. For example, consumer's found it difficult to determine whether a specified amount of a nutrient was a low, medium or high amount.

More recently, Higginson *et al.*⁶ examined verbal protocols when consumer's made their normal weekly shop and when purchasing the healthiest version of nine items listed by the researchers. Nutrition labels were only examined on 4.2% and 33.0% of occasions for the weekly and healthiest version shops respectively. For both types of shopping, the two main nutrients examined were fat and energy.

It is clear that there are problems with the current nutrition label. First, consumers find it difficult to understand the information presented. Second, there is a lack of understanding as to what nutrients are important to examine, with consumers mainly attending to only fat and energy. In fact, it has been known for some time that

the information given regarding nutrition may not quite match what the consumer wants or needs⁷.

Recently, the Food Standards Agency (FSA) tested several methods of banding nutrition information based on signpost labelling concepts,⁸ assessing the extent to which consumers could quickly assess the nutritional content and healthiness of a product. The preferred method of consumers and the FSA was the ‘key nutrients’ concept (option D) which rated each of four nutrients as high (red), medium (amber) or low (green) in what we will refer to as a ‘traffic light’ system.

The study presented will examine the effect of the traffic light label on consumer’s perception of the health rating of foodstuffs. The study will add to existing research on nutrition labelling by systematically varying the levels of each nutrient in a methodical way in order to precisely examine which nutrients people take account of. For example, if people mainly examine the energy and fat content on nutrition labels, does this mean they only use these two items to make health judgements? Do they use only one (or none) of the two? Or do they use other nutrients even though they rarely examine these nutrients?

In conjunction with the systematic variation of the levels of nutrients, eye tracking equipment will be used in order to obtain precise values regarding the amount of time spent examining each area of the nutrition label. Eye tracking equipment provides an objective measure rather than a subjective measure of which nutrients consumers examine most often, providing a more sensitive measure of the importance of particular nutrients.

The remainder of this paper is as follows. First, we cover how the levels of each nutrient were systematically varied. Second, we give details of the actual

methodology of the study. Third, we cover the results obtained. Fourth, a discussion of the results will be given.

Definition of Nutrient Variables

The eight standard nutrients found on most nutrition labels (energy, protein, fat, saturates, carbohydrates, sugars, fibre, sodium) were systematically varied across eighteen nutrition labels using a balanced fractional factorial and orthogonal design. The orthogonal design controls collinearity in the regression analysis, and the balanced fractional factorial provides sufficient independent variability to disambiguate the separate effects of each nutrient.

Each of the eight nutrients were assigned values of either high, medium or low across eighteen orthogonal combinations. High, medium and low levels map on to the traffic light system proposed by the FSA⁸. The eighteen combinations were based upon a random sample of possible combinations and orthogonality was checked so that correlations between nutrients were less than 0.40. Furthermore, the design was balanced so that across the eighteen labels there were six instances of high, medium and low for each nutrient. Table 1 shows the high, medium and low levels of each nutrient for each of the eighteen devised labels.

Nutrient	1	2	3	4	5	6	7	8	9	10	11	12	13	14	15	16	17	18
Energy kcal	2	2	1	2	1	1	2	1	0	0	1	0	1	0	0	2	2	0
Protein	1	2	1	2	1	2	1	0	0	0	2	1	2	2	0	0	0	1
Carbohydrate	1	2	0	2	0	2	0	2	0	1	0	2	1	1	2	1	1	0
Of which sugars	2	0	1	0	0	2	1	0	1	2	1	1	2	1	0	2	2	0
Fat	2	0	1	1	0	2	0	2	2	0	1	2	1	1	1	0	2	0
Of which saturates	0	1	2	2	0	1	1	0	2	1	1	0	2	2	0	1	2	0
Fibre	0	2	0	2	0	0	2	1	1	2	1	1	1	2	0	0	2	1
Sodium	2	1	2	0	0	1	2	1	0	1	0	1	0	2	0	1	2	2

Table 1. Nutrient levels, high (2), medium (1) or low (0), that were used to design each of the eighteen labels.

Table 2 shows the actual quantities that constitute high, medium and low levels of each nutrient based upon Guideline Daily Amounts (GDA) derived from Rayner, Scarborough and Williams¹³ and FSA definitions of ‘a little’ (3.3% or less of GDA) and ‘a lot’ (20% or more of GDA)¹¹.

Nutrients	Male	Female	Mean	High	Medium	Low
	GDA	GDA	GDA	20% GDA	11.65% GDA	3.3% GDA
Energy kcal	2500	2000	2250	450	262.1	74.3
Protein	44	36	40	8	4.7	1.3
Carbohydrate	350	250	300	60	35.0	9.9
Of which sugars	65	50	57.5	11.5	6.7	1.9
Fat	95	70	82.5	16.5	9.6	2.7
Of which saturates	30	20	25	5	2.9	0.8
Fibre	18	18	18	3.60	2.10	0.59
Sodium	2.8	2	2.4	0.48	0.28	0.08

Table 2. The high, medium and low levels used as the basis for the randomly generated levels and their GDA foundation.

Note: Energy levels (kcal) were converted to joules (kj) by multiplying by 4.184.

In order to ensure that the actual quantity of a nutrient varied across labels, the nutrient quantities were randomly assigned within a 12.5% band at each of the low/medium/high levels. This ensured that, for example, two labels with ‘high’ levels of fat did not have exactly the same gram quantities of fat. Table 3 shows the low/medium/high quantity ranges for each nutrient. Note that the actual level used for

‘medium’ had to be lowered in order to prevent unrealistic labels, such as medium levels of saturated fat exceeding low levels of fat. An example of the actual numerical quantities for one of the labels (label one) can be seen in Table 4.

Nutrients	High		Medium		Low	
	Min	Max	Min	Max	Min	Max
Energy kcal	450	506	183	216	65	74
Protein	8.0	9.0	3.3	3.8	1.2	1.3
Carbohydrate	60.0	67.5	24.5	28.8	8.7	9.9
Of which sugars	11.5	12.9	4.7	5.5	1.7	1.9
Fat	16.5	18.6	6.7	7.9	2.4	2.7
Of which saturates	5.0	5.6	2.0	2.4	0.7	0.8
Fibre	3.6	4.1	1.5	1.7	0.5	0.6
Sodium	0.48	0.54	0.20	0.23	0.07	0.08

Table 3. The range of possible high, medium and low values for each nutrient.

Nutrient	Level	Actual
Energy kcal	2	457
Protein	1	3.6
Carbohydrate	1	25.7
Of which sugars	2	12.0
Fat	2	18.3
Of which saturates	0	0.8
Fibre	0	0.6
Sodium	2	0.5

Table 4. An example of the ‘per 100g’ values generated from the high, medium and low levels for label one.

Method

Participants

92 participants (25 male, 67 female; mean age 31.5) were paid for their participation in the study. All participants had normal or corrected-to-normal vision and were either staff or students at the University of Derby. None of the participants worked in food or nutrition areas.

Design

A 2 (label-type: Label A – per 100g and per serving information; Label B – per 100g, per serving and traffic light information) x 9 (nutrition-type: amounts of energy/kcal, energy/kj, protein, fat, saturates, carbohydrates, sugars, fibre and sodium) repeated measures design was employed. The dependent variables were the perceived

healthiness rating for a nutrition label (on a scale of 1-10 with 1 being less healthy and 10 being more healthy; healthiness ratings such as this have been used effectively in the past⁹) and the areas of the nutrition label that participants examined.

Materials

A Cambridge Systems Video Eyetracker Toolbox, dual screen RM 2.8GHz Pentium PC running Microsoft Windows 2000 Professional SP4 and Video Eye Trace 2.0.1 software recorded the raw eye movement data files. A 17" monitor was placed directly in front and 67cm away from the eyetracker. Raw eye movement data was analysed by in-house software written using Microsoft Visual Basic.

Two labels types were devised: type A (the standard 8 nutrients plus an additional energy nutrient in kilojoules) displayed at levels of per 100g and per serving; and type B (as per label A plus fat, saturates, sugars and salt also being displayed as high/medium/low traffic light symbols) (see Figure 1 for an example). Eighteen labels were produced for both label types A and B based on the nutrition levels in Table 1. To ensure consumers would not recognise that the same nutrition levels were being used, type B labels were produced from a different random seed i.e., the underlying high, medium and low banding levels were maintained, but the actual figures presented varied. Macromedia Authorware 6 was used to present the nutrition labels and record healthiness ratings. The 'per serving' information was set at 250g, reflecting a believable figure and one which produces sufficiently different values to the per 100g values. A 250g serving was within the range of typical servings based on a small survey of 12 items.

Procedure

Participants completed a pre-study questionnaire (assessing how often they shopped, how often they examine nutrition labels, etc.) before completing the two-part eye movement study. The first part displayed type A nutrition labels, and the second part displayed type B nutrition labels. Note that label displays were not counterbalanced: displaying label B (normal label plus traffic lights) prior to label A may have guided consumers as to the important nutrients to examine in label A.

For each of the two parts, participants were calibrated to the eye tracking system before each set of 18 nutrition labels were displayed. Labels were displayed in a random sequence, with the participant being asked to examine the nutrition information and judge the label for healthiness. A break of 30 seconds was given between part one and part two. Upon completion participants filled in a post-study questionnaire (assessing what they thought of the traffic light labels etc.) and were debriefed as to the nature of the study. The questionnaire data is not presented in this paper.

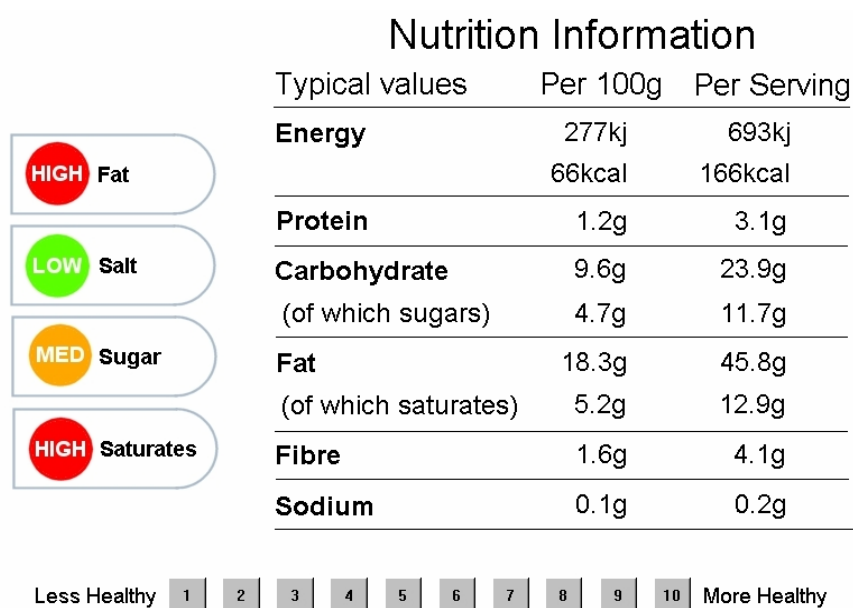


Figure 1. Screenshot of the Type B label presentation.

Results

Derivation of fixation data

The eye tracking equipment recorded the x,y position of the eye on the nutrition label every 20ms. This data was summarised into fixation locations if the gaze remained in a fixed location (or at a location subtended by a maximum angle of 1° from the original x,y position) for 200ms. The time spent examining each amount of a nutrient on a nutrition label was the cumulative amount of the fixation time at an x,y location that was located within the numeric figures for the nutrient.

The fixation data analysis for label A was based on 64 participants and the fixation data for label B was based on 71 participants. Eye tracking data that was not of a sufficient standard was discarded.

Summary of fixation data

Figures 2 and 3 show the percentages of time spent examining each of the nutrient quantities for label types A and B respectively. There was a clear difference between the two label types – for label A, Carbohydrate Sugars were examined most often, whereas for label B, Fat was examined most often. The traffic light label was clearly affecting the areas of the label that participants examine. The most explicit indication of this was that when all areas relating to each specific nutrient were totalled (e.g., fibre per 100g and fibre per serving, fat per 100g, per serving and traffic light), all of the traffic light nutrients headed the list of the nutrients that were examined the most often.

Nutrition Information

Typical values	Per 100g	Per Serving
Energy	2.0% (2.5)	5.8% (4.3)
	3.0% (4.3)	8.7% (5.7)
Protein	3.2% (2.8)	7.8% (4.2)
Carbohydrate (of which sugars)	6.5% (6.8)	8.5% (4.8)
	11.8% (9.5)	6.8% (4.5)
Fat (of which saturates)	4.2% (5.2)	9.2% (4.2)
	1.9% (2.9)	8.1% (4.5)
Fibre	1.4% (2.6)	5.9% (3.1)
Sodium	0.9% (1.2)	4.3% (2.4)

Figure 2. Percentage of total fixation time spent examining each nutrient for label A (standard deviations in parentheses).

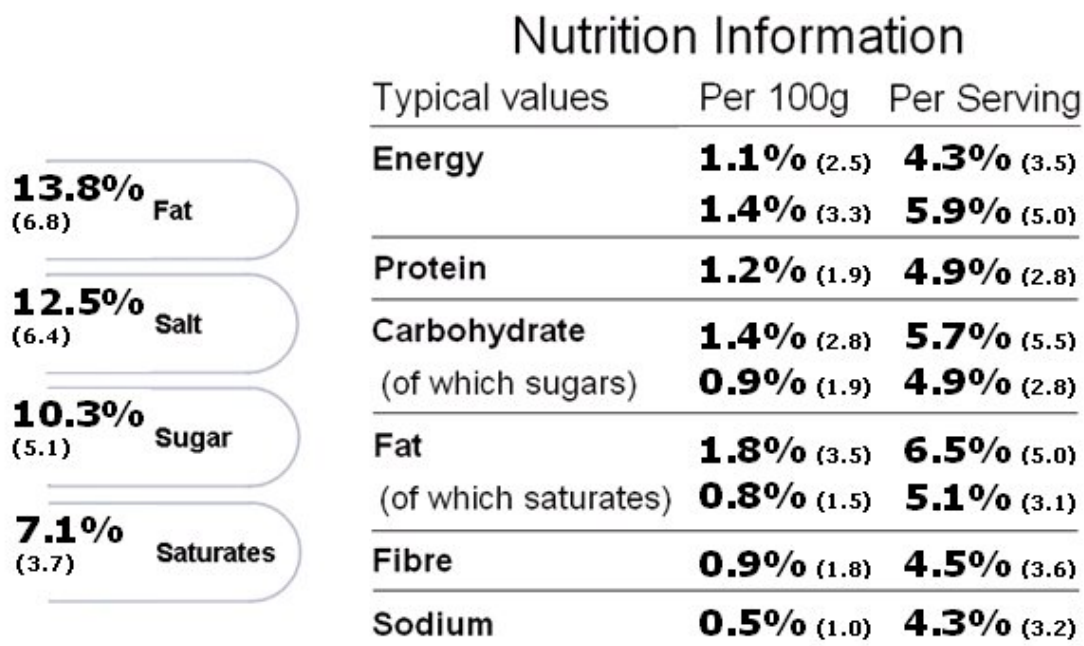


Figure 3. Percentage of total fixation time spent examining each nutrient for label B (standard deviations in parentheses).

Regression analysis

Label Type A – per 100g and per serving

Multiple regression analysis was used to examine the relationship between healthiness ratings and the nutrients. All 1656 ratings of perceived healthiness for the 18 labels were included in the analysis. The independent variables (IVs) or predictors were the amounts of each of the eight nutrients (since energy kcal and energy kj specified similar information). The dependent variable was the healthiness ratings given for each label. As there was multiple data for each participant, dummy variables to identify each participant were entered in the first block in order to control for variability due to individual differences¹². The main IVs were then entered.

Diagnostic checks for collinearity and cases exerting undue influence were performed and showed no reason for concern. Table 5 provides a summary of the regression results.

The between participants dummy variables in model 1 gave $R=0.55$ and the Adjusted $R^2=0.26$. The model including the eight nutrients gave $R=0.63$ and Adjusted $R^2=0.36$ ($F(99,1556)=10.33, p<.01$). The R^2 Change figure suggested that 9.5% of the variance in healthiness ratings were related to some combination of the eight nutrients.

Standardized regression coefficients for each nutrient suggested an increase in perceived healthiness was associated with decreases in Fat ($-0.161, t(1556) = 6.19, p<.001$), Saturated Fat ($-0.194, t(1556) = 7.72, p<.001$), Energy ($-0.092, t(1556) = 4.18, p<.001$) and Carbohydrate Sugars ($-0.055, t(1556) = 2.45, p<.05$), and increases in Fibre ($0.086, t(1556) = 3.37, p<.01$).

Label Type B – per 100g, per serving and traffic lights

The same analysis performed for label A was repeated for label B. The between participants dummy variables in model 1 gave $R=0.40$ and the Adjusted $R^2=0.11$. The model including the eight nutrients gave $R=0.75$ and Adjusted $R^2=0.53$ ($F(99,1556)=19.97, p<.01$). The R^2 Change figure suggested that 39.7% of the variance in healthiness ratings were related to some combination of the eight nutrients.

Standardized regression coefficients for each nutrient suggested an increase in perceived healthiness was associated with decreases in Fat ($-0.331, t(1556) = 15.25, p<.001$), Saturated Fat ($-0.251, t(1556) = 11.41, p<.001$), Energy ($-0.049, t(1556) = 2.67, p<.001$), Carbohydrate Sugars ($-0.230, t(1556) = 12.27, p<.05$), Fibre ($-0.062, t(1556) = 2.91, p<.01$) and Sodium ($-0.204, t(1556) = 10.14, p<.001$).

Model Summary	Label type	
	100g & per serving	100g, per serving & traffic light
R	0.63	0.75
Adjusted R ²	0.36	0.53
R ² Change	0.10	0.40
Nutrients	Std. Beta	Std. Beta
kcal	-0.092*	-0.049*
Protein	0.013	-0.021
Carbohydrate	-0.038	-0.026
Of which sugars ⁺	-0.055*	-0.230*
Fat ⁺	-0.161*	-0.331*
Of which saturates ⁺	-0.194*	-0.251*
Fibre	0.086*	-0.062*
Sodium ⁺	-0.037	-0.204*

Table 5. Summary of Regression Results (* denotes significance at $p < .05$ or better; ⁺ denotes nutrient indicated by traffic light system).

Do people pay the most attention to the nutrients they use to make healthiness judgements?

Table 6 shows the percentage fixation time and the absolute standardised beta values for each of the nutrients for labels A and B. Percentage fixation times indicate which nutrients participants examined most often, and the absolute standardised beta values indicate which nutrients participants placed the most importance on for arriving at a healthiness rating.

There was no correlation between fixation times and standardised beta values for label A ($r(6)=-.01, p>.05$) but there was a significant correlation for label B ($r(6)=.88, p<.01$). The traffic light system in label B clearly helps in guiding participants attention to the most appropriate areas of the nutrition label.

	Label A: per 100g and per serving		Label B: per 100g, per serving and traffic light	
	Fixation time (%)	Standardised Beta	Fixation time (%)	Standardised Beta
Energy	19.5	.092	12.7	.049
Protein	11.0	.013	6.2	.021
Carbohydrate	15.0	.038	7.2	.026
Sugars	18.6	.055	16.1	.230
Fat	13.4	.161	22.1	.331
Saturates	10.0	.194	13.1	.251
Fibre	7.3	.086	5.4	.062
Sodium/Salt	5.2	.037	17.2	.204

Table 6. Percentage fixation time and standardised beta values of nutrients for each label type.

Are participants accurate in their healthiness ratings?

Health scores were calculated for each of the nutrition labels displayed based on the SSAg/1 system of calculating healthiness¹¹. The SSAg/1 system was used because it maps onto specific nutrient values that are depicted in the nutrition label, and it gives a score with clear minimum and maximum values (0 to 8). Table 7 shows the SSAg/1

health scores for the 18 nutrition labels together with the mean perceived healthiness rating for that label, for each of the two label types. For ease of comparison, the mean perceived healthiness ratings were scaled to be from 0-8 and were reversed so that scores tending towards 0 represented 'more healthy' and scores tending towards 8 represented 'less healthy' (as per SSAg/1 scores).

The amount of 'error' in healthiness ratings was then calculated based on the difference between the participants perceived healthiness rating for each label and the actual SSAg/1 health score for each label. The mean error in perceived healthiness ratings was 2.22 (SD .77) for label A and 1.77 (SD .76) for label B. The mean error was significantly lower for label B ($t(17)=3.57, p<.01$), indicating that for label B, participants perceived healthiness ratings were closer to the actual SSAg/1 health score than they were for label A.

Nutrition label	SSAg/1 health score	Label A mean healthiness rating	Label B mean healthiness rating
1	6	5.77	6.59
2	4	4.31	3.79
3	6	5.67	5.95
4	4	5.21	5.13
5	1	3.83	1.56
6	5	5.51	6.19
7	6	4.49	4.88
8	2	5.10	4.93
9	3	5.59	6.07
10	4	4.17	4.76
11	3	4.65	4.19
12	2	5.01	5.09
13	5	5.20	5.73
14	5	5.18	5.68
15	0	4.31	2.79
16	6	5.27	4.80
17	8	6.04	7.57
18	2	3.57	4.09

Table 7. SSAg/1 health score for the 18 nutrition labels together with the mean perceived healthiness rating for that label, for each of the two label types. Perceived healthiness ratings are adjusted and reversed such that 0=very healthy and 8=very unhealthy.

Discussion

The results showed a clear benefit of label type B (the traffic light label). First, for label A, the nutrients that people examined bore little resemblance to the nutrients that people actually used when making a healthiness judgement. This changed with label B: the traffic light guided people to the important nutrients and thus people mainly examined the nutrients that they used to make their healthiness judgements. Second, the regression analyses showed the variance in healthiness ratings accounted for by some combination of the nutrients was only 9.5% for label A whereas this increased to almost 40% for label B. Third, when the traffic lights were present, people directed a lot of their attention towards them. Fourth, healthiness ratings more closely approximated actual health scores for the nutrition labels when the traffic light was present than when it was not present.

One of the main findings was the remarkable effect the traffic light had upon the information that people examined on the labels and their resulting healthiness judgements. Both the eye movement data and the regression data indicated clear benefits for label B. That is, two independent measures of eye movements and healthiness ratings both suggest the effectiveness of the traffic lights. There was also a clear indication from these results that the traffic lights guide people to the most important nutrients to consider – and therefore they helped to educate the consumer in relation to the important nutrients to factor when judging healthiness of foodstuffs.

The difference in results between label A and label B suggests that for the standard nutrition label, there may be too much information for consumer's to comprehend, and this supports the previous literature that has examined nutrition

labels⁵. The traffic lights reduce the amount of nutrients that people have to examine, and furthermore they reduce the amount of calculation that consumer's have to perform, because they indicate levels of the nutrient rather than requiring the consumer to compute what a numeric value of a nutrient means. As such, the cognitive workload of the consumer is reduced so that there is more opportunity to make an informed decision about the foodstuff.

However, the tightly controlled methodology required for objectivity together with a computer-based presentation does result in the need for some caution when interpreting the results. Firstly, the traffic light label was presented alongside the nutrition label, whereas it was actually intended to be on the front-of-pack. Second, no further information was given with the nutrition label, whereas in real-life, nutrition decisions may be affected by a variety of information such as the foodstuff itself, nutrient claims, ingredients etc. Third, the task itself was to assess the healthiness of a foodstuff, whereas consumers often only use nutrition information for comparisons with other foodstuffs⁶. Fourth, participants were only given one type of task to do – it remains to be seen if the traffic light label outperforms the standard nutrition label for other types of task, such as comparisons across labels. Nevertheless, the study presented is important because it provides a baseline measure of performance, enabling comparisons when greater context and realism are added in future research.

Using a systematic approach and measuring eye movements and healthiness ratings, this article has shown that consumer's find the standard nutrition label difficult to interpret, whereas the traffic light label helps to guide consumer's attention and hence contributes to a marked improvement in health perception of foodstuffs. Further research is required to examine the extent to which the findings apply in a real-world setting.

Acknowledgements

The authors would like to thank Anastasios Vaporidis for his help in collecting the data presented, Alan Wright for his help in developing the eye movement software, and the Allied Health Group at the University of Derby for help in funding this research.

References

1. Salt K. The truth about the nation's diet. *Nutritional Bulletin* 2004; **29**: 268-271.
2. Rayner M, Scarborough P. The burden of food related ill health in the UK. *Journal of Epidemiology and Community Health* 2005; **59**: 1054-1057.
3. Caraher M, Dixon P, Lang T *et al.* The state of cooking in England: The relationship of cooking skills to food choice. *British Food Journal* 1999; **101**: 590-609.
4. Holdsworth M, Spalding D. The development, implementation, monitoring and evaluation of a food and nutrition policy within a local health plan. *Journal of Human Nutrition and Dietetics* 1997; **10**: 209-217.
5. Black A, Rayner M. *Just read the label: Understanding nutrition information in numeric, verbal and graphic formats*, 1992. London, UK:HMSO.
6. Higginson CS, Rayner MJ, Draper S *et al.* The nutrition label – which information is looked at? *Nutrition and Food Science* 2002; **32**: 92-99.
7. Hurt E. Nutritional labelling: European Union and United Kingdom perspectives. *Asia Pacific Journal of Clinical Nutrition* 2002; **11**: S77-S79.

8. Food Standards Agency. *Concept Testing of Alternative Labelling of Healthy / Less Healthy Foods* [online]. Available at <http://www.food.gov.uk/multimedia/pdfs/alternlab.pdf>, 2004.
9. Byrd-Bredbenner C, Alfieri L, Kiefer, L. The nutrition label knowledge and usage behaviors of women in the US. *Nutrition Bulletin* 2000; **25**: 315-322.
10. Cowburn G, Stockley L. Consumer understanding and use of nutrition labelling: A systematic review. *Public Health Nutrition* 2005; **8**: 21-28.
11. Rayner M, Scarborough P, Stockley L. *Nutrient profiles: Options for definitions for use in relation to food promotion and children's diets: Final Report* [online]. Available at <http://www.food.gov.uk/multimedia/pdfs/nutrientprofilingfullreport.pdf>, 2004.
12. Pedhazur EJ. *Multiple Regression in Behavioral Research, (2nd Ed.)*, 1982. New York, NY: CBS College Publishing.
13. Rayner M, Scarborough P, Williams C. The origin of Guideline Daily Amounts and the Food Standards Agency's guidance on what counts as 'a lot' and 'a little'. *Public Health Nutrition* 2004; **7**: 549-556.