



Assessment of the direct and indirect effects of MPP⁺ and dopamine on the human proteasome: implications for Parkinson's Disease aetiology.

Journal:	<i>Journal of Neurochemistry</i>
Manuscript ID:	JNC-E-2007-0401.R2
Manuscript Type:	Original Article
Date Submitted by the Author:	n/a
Complete List of Authors:	Caneda-Ferrón, Begoña; Nottingham Trent University, School of Biomedical and Natural Sciences De Girolamo, Luigi; Nottingham Trent University, School of Biomedical and Natural Sciences Costa, Teresa; Nottingham Trent University, School of Biomedical and Natural Sciences Beck, Katy; Nottingham Trent University, School of Biomedical and Natural Sciences Layfield, Rob; University of Nottingham Medical School, School of Biomedical Sciences Billett, E.; Nottingham Trent University, School of Biomedical and Natural Sciences
Keywords:	20S proteasome, MPP ⁺ , dopamine, SH-SY5Y, Parkinson's disease, dysfunction

1
2
3
4
5
6 **Title:** **Assessment of the direct and indirect effects of**
7 **MPP⁺ and dopamine on the human proteasome:**
8 **implications for Parkinson's Disease aetiology.**
9

10
11
12
13 **Authors:** Begoña Caneda-Ferrón, Luigi A De Girolamo, Teresa Costa, Katy E
14 Beck, Robert Layfield[†] and E Ellen Billett
15

16
17
18 **Address:** Interdisciplinary Biomedical Research Centre, School of Biomedical
19 and Natural Sciences, Nottingham Trent University, Clifton,
20 Nottingham NG11 8NS, United Kingdom.
21 [†]School of Biomedical Sciences, University of Nottingham Medical
22 School, Queen's Medical Centre, Nottingham NG7 2UH
23
24
25

26
27 **Correspondence:** Prof. E Ellen Billett, Interdisciplinary Biomedical Research
28 Centre, School of Biomedical and Natural Sciences,
29 Nottingham Trent University, Clifton, Nottingham NG11 8NS,
30 United Kingdom.
31

32 **Telephone:** + 44 (0)115 8486356
33 **Fax:** + 44 (0)115 8486355
34 **Email:** ellen.billett@ntu.ac.uk
35
36
37
38

39 **Abbreviations:** PD, Parkinson's Disease; CLA, chymotrypsin-like activity; TLA,
40 trypsin-like activity; PLA, post-acidic-like activity; UPS,
41 ubiquitin proteasomal system; ROS, reactive oxygen species;
42 NAC, *N*-acetyl-L-cysteine
43
44
45
46
47
48
49
50
51
52
53
54
55
56
57
58
59
60

Abstract

Mitochondrial impairment, glutathione depletion and oxidative stress have been implicated in the pathogenesis of Parkinson's disease, linked recently to proteasomal dysfunction. Our study analysed how these factors influence the various activities of the proteasome in human SH-SY5Y neuroblastoma cells treated with the PD mimetics MPP⁺ (a complex 1 inhibitor) or dopamine. Treatment with these toxins led to dose and time dependent reductions in ATP and glutathione and also chymotrypsin-like and post-acidic like activities; trypsin-like activity was unaffected.

Anti-oxidants blocked the effects of dopamine, but not MPP⁺, suggesting that oxidative stress was more important in the dopamine-mediated effects. With MPP⁺, ATP depletion was a pre-requisite for loss of proteasomal activity. Thus in a dopaminergic neuron with complex 1 dysfunction both oxidative stress and ATP depletion will contribute independently to loss of proteasomal function.

We show for the first time that addition of MPP⁺ or dopamine to purified samples of the human 20S proteasome also reduced proteasomal activities; with dopamine being most damaging. As with toxin- treated cells, chymotrypsin-like activity was most sensitive and trypsin-like activity the least sensitive. The observed differential sensitivity of the various proteasomal activities to PD mimetics is novel and its significance needs further study in human cells.

Running Title: Parkinson's Disease Mimetics on proteasomeal activity.

Keywords: 20S proteasome, MPP⁺, dopamine, SH-SY5Y, Parkinson's disease, dysfunction.

Introduction

Parkinson's Disease (PD) is one of the most common age-related neurodegenerative disease affecting around 1 % of the population aged over 65 years. The pathological hallmark is selective degeneration of the dopamine-containing neurons of the substantia nigra pars compacta, accompanied by the intracytoplasmic accumulation of Lewy body inclusions containing aggregated, nitrated, oxidised and ubiquitinated proteins (Forno, 1996; Good *et al.* 1998; Kowall *et al.* 2000; Lopiano *et al.* 2000; McNaught and Olanow 2006). The proteins present include α -synuclein, neurofilaments, ubiquitin, and proteasomal subunits.

In sporadic cases of PD, nigral pathology is associated with mitochondrial dysfunction, notably a reduced activity of complex 1 of the electron transport chain (Schapira *et al.* 1990; McNaught *et al.* 2001; Orth and Schapira 2002). Indeed, agents which inhibit complex 1, such as 1-methyl 4-phenyl-1,2,3,6-tetrahydropyridine (MPTP) and rotenone, produce selective degeneration of dopaminergic neurons in animal models (Beal 2001). MPTP is oxidised by monoamine oxidase to the potent neurotoxin 1-methyl-4-phenylpyridinium (MPP⁺), which selectively accumulates in dopaminergic neurons via the dopamine uptake transporter and is occasionally associated with the formation of intraneuronal inclusions reminiscent of Lewy bodies (Kowall *et al.* 2000). Although the specificity of rotenone has been questioned (Perier *et al.* 2003), chronic rotenone treatments, both in vivo and in vitro, have been reported to lead to the formation of insoluble aggregates of synuclein (Betarbet *et al.* 2000; Sherer *et al.* 2002). Although rotenone does not concentrate in dopaminergic neurons, it induces selective dopamine cell death, suggesting that these neurons are uniquely sensitive to complex 1 impairments; this may be linked to dopamine itself (see below).

1
2
3
4
5
6
7
8
9
10
11
12
13
14
15
16
17
18
19
20
21
22
23
24
25
26
27
28
29
30
31
32
33
34
35
36
37
38
39
40
41
42
43
44
45
46
47
48
49
50
51
52
53
54
55
56
57
58
59
60

Oxidative stress, accompanied by depletion of the antioxidant glutathione, is also thought to contribute to the disease (Gu *et al.* 1998; Riederer *et al.* 1989). Reactive oxygen species (ROS) may be produced during oxidative phosphorylation; within complex 1, upstream of the MPP⁺/rotenone binding site, which is a site of electron leakage that enhances ROS formation (Hensley *et al.* 1998). In addition, dopamine metabolism is another source of ROS (Cassarino *et al.* 1998) and dopamine is implicated in the etiology of PD irrespective of its role as a neurotransmitter. Selective degeneration of dopaminergic neurons with MPTP/MPP⁺ is reported to trigger a rapid efflux of dopamine from intracellular vesicles (Santiago *et al.*, 1995), exacerbating oxidative stress. Normal catabolism of dopamine via the flavoprotein monoamine oxidase produces hydrogen peroxide (Maker *et al.* 1981). In addition, dopamine can autooxidise (Graham *et al.* 1978) and form reactive quinone and semi-quinone species that are capable of modifying cellular macromolecules, both by autooxidation and following catalysis by various enzymes (such as tyrosinase, cyclooxygenase or peroxidase) and metals (such as manganese and iron, Stokes *et al.* 2000). Under normal conditions mitochondrial hydrogen peroxide is mainly removed by its enzymatic conversion to water by glutathione peroxidase (mitochondria lack catalase). If cytoplasmic dopamine levels increase, or if cytoplasmic levels are normally high, glutathione will have a very important role in the detoxification process. Indeed, dopamine has been associated with inhibition of respiration, possibly relating to the effects of its oxidation products (Gluck *et al.* 2002), although earlier work regarding the effects of dopamine on mitochondrial respiration was contradictory (Blum *et al.* 2001; Gluck *et al.* 2002).

1
2
3 Recent evidence suggests that failure of the ubiquitin proteasome system (UPS)
4 contributes to degeneration of dopaminergic neurons and Lewy body formation in
5 sporadic PD (McNaught *et al.* 2001; McNaught and Jenner 2001). This system plays an
6 essential role in the degradation and clearance of short-lived, mutant, misfolded or
7 damaged proteins in eukaryotes (Goldberg, 1995). The 26S proteasome is a multi-
8 catalytic protease which contains a catalytic 20S core, comprised of outer heptameric
9 rings of α subunits and two inner heptameric rings of catalytically active β subunits.
10 Some of the 20S sub-complex is associated in an ATP dependent manner with a 19S
11 regulatory particle, making up the 26S complex, which degrades ubiquitinated proteins
12 in an ATP-dependent process. The 19S complex utilizes ATP hydrolysis to control
13 access of substrate to the 20S proteasome core. The best characterized proteolytic
14 activities of the 20S complex are known as chymotrypsin-like, trypsin-like and post-
15 acidic like (Ferrell *et al.* 2000).
16
17
18
19
20
21
22
23
24
25
26
27
28
29
30
31
32
33
34
35

36 Impaired protein clearance in the substantia nigra pars compacta is supported by
37 evidence of oxidised protein accumulation (Yoritaka *et al.* 1996; McNaught *et al.* 2003)
38 and by reduced 20S proteasomal activity in nigral post-mortem samples (McNaught *et*
39 *al.* 2003). The discovery of some rare familial cases linked to genetic mutations lends
40 further support to a failure in the UPS. Thus in autosomal dominant PD mutations in the
41 gene coding for α -synuclein, one of the major components of Lewy bodies, have been
42 reported (Polymeropoulos *et al.* 1997; McNaught *et al.* 2003). These mutations have
43 been thought to cause the protein to misfold and aggregate, impairing its degradation by
44 the UPS and inhibiting proteasomal activity (Bennett *et al.* 1999), although other
45 mechanisms have also been proposed (Tofaris *et al.* 2001; Tofaris *et al.* 2003). In
46 addition, loss of function mutations in two UPS enzymes, parkin (which has E3
47
48
49
50
51
52
53
54
55
56
57
58
59
60

1
2
3 ubiquitin ligase activity) and ubiquitin carboxy terminal hydrolase-L1, are associated
4
5 with neurodegeneration in some familial forms of PD (reviewed by Farrer 2006).
6
7
8
9

10 The association between mitochondrial dysfunction and the proteasomal system in PD
11 has recently been a focus of interest (Hoglinger *et al.* 2003; Shamoto-Nagai *et al.* 2003;
12 Duke *et al.* 2006). For example, Hoglinger *et al.* (2003) studied the effects of complex 1
13 inhibition on the survival of primary rat mesencephalic cultures, and attempted to
14 correlate this with proteasomal activity and ATP levels. Although this work has
15 provided very useful information there has been little or no effort to distinguish between
16 the direct and indirect effects of the neurotoxins on proteasomal activity, and the short
17 time courses used may have overlooked the chronic effects. The work of Hoglinger *et al.*
18 (2003) was also complicated by the use of primary, non-human (rat) embryonic cell
19 cultures which are, by their nature, a mixed population. In addition, no attempt has been
20 made to correlate the changes with alterations in glutathione levels, which are reportedly
21 reduced in PD brains (Jenner, 1993) and low levels of which can disrupt the ubiquitin
22 proteasomal pathway (Jha *et al.*, 2002). Thus in this study the direct effects of MPP⁺,
23 MPTP and dopamine on the activity of purified human 20S proteasome are compared
24 with the effects of the toxins on 20S proteasomal activities of human cells exposed to
25 the neurotoxins. Human neuroblastoma SH-SY5Y cells, chosen for this study, are a
26 widely used dopaminergic cell model for PD studies since they contain dopamine
27 (Xavier-Gimenez *et al.*, 2006), monoamine oxidase-A (Jiang *et al.*, 2006) and a
28 dopamine re-uptake system (Jiang *et al.*, 2004), all characteristics of the dopaminergic
29 neurons that are selectively lost in PD. The association between ATP, cellular
30 glutathione, ROS and proteasomal activity in this model are reported in this manuscript.
31
32
33
34
35
36
37
38
39
40
41
42
43
44
45
46
47
48
49
50
51
52
53
54
55
56
57
58
59
60

Materials and Methods.

Materials

The source of materials are listed below: Tissue culture plastic ware, Scientific Laboratory Supplies (Nottingham, UK); ATP ViaLight[®] Plus Cell BioAssay kit, Cambrex Bioscience Ltd (Wokingham, UK); Human erythrocyte 20S proteasomes, Biomol International LP (Exeter, UK); MPP⁺, dopamine and L-Buthionine-[S,R]-sulfoximine (BSO) Sigma Aldrich Chemical Co (Poole, UK). The fluorogenic peptide substrates succinyl-leucine-leucine-valine-tyrosine-7-amido-4-methylcoumarin (Suc-LLVY-AMC) and boc-leucine-arginine-arginine-7-amido-4-methylcoumarin (Boc-LRR-AMC) were purchased from Bachem Ltd (St. Helens, UK). The fluorogenic peptide substrate Z-leucine-leucine-Glutamic acid-7-amido-4-methylcoumarin (Z-LLE-AMC), recombinant calpain-2 enzyme (#208718) and Calpain Inhibitor III (MDL 28170) were purchased from Calbiochem (Nottingham, UK). All other chemicals were purchased from Sigma Aldrich Chemical Co. (Poole, UK) unless otherwise stated.

Cell culture

SH-SY5Y human neuroblastoma cells (from the European Collection of Animal and Cell Cultures) were maintained as a monolayer in Dulbecco's modified Eagle's medium (DMEM)/Ham's F12 (1:1) containing 10 % (v/v) heat inactivated foetal bovine serum, 1 % (v/v) MEM non-essential amino acids, 2mM L-glutamine, 200 units/ml penicillin, 20 µg/ml streptomycin (Cambrex Bioscience Ltd, Wokingham, UK) at 37°C in a humidified atmosphere of 95 % (v/v) air/ 5 % (v/v) CO₂ until 70-90 % confluent. Cells were used between passages 16-20.

Protein estimation

Protein estimation of samples was carried out using the BioRad protein assay (BioRad Laboratories Ltd, Hemel Hempstead, UK) in accordance with the manufacturer's instructions using bovine serum albumin as a standard.

Viability studies

SH-SY5Y cells (10,000 cells per well) were cultured in 96-well culture plates in growth medium in the presence or absence of either BSO (2 mM), MPP⁺ (100 μM, 2 mM) or dopamine (100 μM, 2 mM) for 24 h, 48 h and 72 h. Cell viability was assessed at each time point using the MTT {3-(4,5-dimethylthiazol-2-yl)-2,5-diphenyltetrazolium bromide; assay (Cookson et al., 1995). Briefly, 1 hour prior to the end of each incubation MTT (0.5 mg/ml, final conc) was added to each well and plates re-incubated at 37°C for 1 hour. Medium was carefully aspirated from the wells and the endogenous formazan product eluted using 100 μl dimethyl sulphoxide. Plates were gently agitated to fully dissolve the formazan product, prior to reading the absorbance at 570 nm. Blank values were subtracted from each reading and the absorbance then expressed as a percentage of the value for the corresponding control.

Determination of ATP levels

SH-SY5Y cells (10,000 cells/well) were cultured in 96 well plates in growth medium in the presence or absence of BSO (2 mM), MPP⁺ (100 μM, 2 mM) or dopamine (100 μM, 2 mM) for 24 h, 48 h and 72 h. ATP levels were measured using the ViaLight[®] Plus Cell BioAssay kit which utilizes luciferase to catalyse the formation of light from ATP and luciferin. The emitted light intensity was measured using a FLUOstar Optima luminometer (BMG Labtech, UK). Samples were protein estimated using the

1
2
3 BioRad assay and results were calculated as ATP levels/ μg protein and expressed as
4
5
6 % ATP levels in comparison to control samples.
7
8
9

10 **Proteolytic activities**

11
12 SH-SY5Y cells were plated out in 6-well plates at a density of 500,000 cells/well.
13
14 Cells were exposed to either BSO, MPP^+ , MPTP or dopamine for 24 h, 48 h or 72 h.
15
16 After the required exposure period cells were detached using a cell scraper,
17
18 centrifuged and washed with DMEM. Cell pellets were resuspended in 250 μl ice-
19
20 cold homogenisation buffer [20 mM Tris/HCl, pH 7.2; 0.1 mM EDTA; 1 mM 2-
21
22 mercaptoethanol; 5 mM ATP; 20 % (v/v) glycerol; 0.4 % (v/v) Igepal CA-630].
23
24 Samples were vigorously vortex mixed and cleared of cell debris by centrifugation,
25
26 prior to assessment of proteasome activity. Suc-LLVY-AMC, Boc-LRR-AMC and Z-
27
28 LLE-AMC were used to assess chymotrypsin-like (CLA), trypsin-like (TLA) and post
29
30 acidic-like (PLA) activities, respectively (Kisselev & Goldberg, 2005). The
31
32 fluorogenic peptide assay was performed using 20-30 μg of SH-SY5Y cell lysate, in a
33
34 final volume of 200 μl assay buffer (50 mM HEPES pH 8.0, 5 mM EGTA).
35
36 Fluorescence (360nm excitation; 465 nm emission) was measured every 5 minutes up
37
38 to 2 h, linear rates calculated as $\Delta\text{FU}/\text{s}/\mu\text{g}$ protein and expressed as % change in
39
40 comparison to control samples.
41
42
43
44
45
46
47
48
49
50

51 The chymotrypsin-like (CLA), trypsin-like (TLA) and post acidic-like (PLA) activities
52
53 of purified human erythrocyte 20S proteasome exposed to 10 μM , 100 μM , 500 μM and
54
55 2 mM MPTP, MPP^+ and dopamine were also assessed. The fluorogenic peptide assay
56
57 was performed using 0.05 μg 20S proteasome/well in a final volume of 200 μl Assay
58
59
60

1
2
3 Buffer measuring fluorescence every 5 minutes as before. The results were expressed as
4
5
6 % change in comparison to control samples.

7
8 Activity of commercial calpain (3.6 μg) was assessed using the method described by
9
10 Sasaki et al, (1984) and the substrate Suc-Leu-Tyr-AMC in a total reaction volume of
11
12 100 μl [60 mM imidazole pH 7.3, 5 mM cysteine, 2.5 μM 2-mercaptoethanol, 5 mM
13
14 CaCl_2]. Fluorescence was measured every minute for 20 minutes and results expressed
15
16 as % change in comparison to control samples.
17
18

19 20 21 22 **Analysis of total glutathione (GSH and GSSG) by enzymatic detection.**

23
24 Total glutathione levels were determined using the DTNB-GSSG reductase-recycling
25
26 assay, based on the method described by Anderson (1985), with minor modifications.
27
28 Cells exposed to 2 mM BSO, 100 μM and 2 mM MPP^+ , MPTP or dopamine for 24 h, 48
29
30 h or 72 h, were harvested by trypsinisation. Following washing the resultant cell pellet
31
32 was resuspended in 200 μl ice-cold sulphosalicylic acid, sonicated for 3 x 5 seconds and
33
34 centrifuged at 10,000 g for 5 minutes at 4°C. Supernatants were then assayed for total
35
36 glutathione content. Separate cell pellets were resuspended in 50 μl 1 M NaOH and
37
38 protein estimated using the BioRad assay. For total glutathione analysis 140 μl NADPH
39
40 (0.33 mM) and 20 μl DTNB (6 mM) were added to 20 μl aliquots of sample
41
42 supernatants, GSH standards (20–4000 pmol GSH), or blanks prior to the addition of 10
43
44 μl of glutathione reductase (0.1 U/ml). Samples were made up to 200 μl with assay
45
46 buffer (143 mM sodium phosphate and 6.3 mM sodium EDTA, pH 7.5) and the
47
48 formation of thionitrobenzoic acid was monitored by measuring absorbance at 412 nm
49
50 over 10 min. Concentrations of total glutathione (pmol/ μg protein) were calculated from
51
52 the GSH standard curve and expressed as % total glutathione content compared to
53
54
55
56
57
58
59
60 controls.

Evaluation of ROS

SH-SY5Y cells were grown in Lab-Tek (NUNC, Scientific Laboratory Supplies, UK) chamber slides prior to treatment with MPP⁺, dopamine or BSO for 72 hours. Levels of intracellular reactive oxygen species were measured using 2',7'-dichlorofluorescein diacetate (DCHDF) dye. Following treatment, medium was removed and replaced with 100 µM DCHDF for 30 min at 37°C to allow its conversion to dichlorofluorescein. Cell monolayers were then washed with Hank's balanced salt solution and ROS-activated fluorescence detected (excitation 488 nm, emission 515 nm) and photographed with a Leica TCS – NT confocal inverted microscope (Leica Microsystems, UK). All images were taken using the same laser power, gain and objective.

Statistical analysis

Data are expressed as the mean ± the standard error of the mean (SEM) and statistical analysis performed using a two-tailed, homoscedastic, Students t-Test with a 95 % confidence limit ($p < 0.05$) or a 99 % confidence limit ($p < 0.01$).

Results

Effects of MPP⁺ and dopamine on SH-SY5Y cell viability.

Before studying the effect of toxins on proteasomal activity, concentrations of the toxins that were highly and mildly cytotoxic to mitotic SH-SY5Y cells over a 72 h period were established using an MTT reduction assay. This assay is dependent on cell integrity and viability and is, more specifically, a measure of metabolic activity. Figure 1 shows that MPP⁺ and dopamine reduced cell viability in a dose dependent manner. Cell viability was not reduced until 48 h exposure with 100 μ M MPP⁺ (29 % reduction cf. controls) whilst 2 mM MPP⁺ reduced cell viability by 51 % after 24 h. Dopamine at 100 μ M did not affect cell viability until 72 h, reducing viability by 30 %, whilst a 500 μ M dose led to a 64 % decrease in cell viability after 24h, similar to 2 mM MPP⁺. Cell death did not always increase dramatically during the time course, probably due to compensatory metabolic mechanisms that occur when cells are stressed (Cookson et al., 1995). BSO toxicity was also assessed. Although, 2 mM BSO led to a 90 % reduction in glutathione levels as early as 24 h (see Fig. 6), cell viability was not affected until 96 h exposure where viability was reduced by approximately 50 % (data not shown).

In subsequent experiments, 100 μ M MPP⁺ and 100 μ M dopamine were selected for use in SH-SY5Y cells as a mildly toxic dose (~20-30 % reduction in cell viability after 72 h) and 2 mM MPP⁺ and 500 μ M dopamine as a highly toxic dose (~60-70 % cell viability reduction cf. controls after 72 h).

Specificity of the different proteasomal substrates and inhibitors.

1
2
3 Before monitoring the effects of mildly and highly cytotoxic levels of MPP⁺ and
4 dopamine on proteasomal activity in SH-SY5Y cells, we next checked the specificity
5 of the different proteasomal substrates and inhibitors in our cells in comparison to
6 purified human erythrocyte 20S proteasomes.
7
8

9
10 The fluorogenic substrates Suc-LLVY-AMC, Boc-LLR-AMC and ZLLE-AMC were
11 used to represent CLA, TLA and PLA, respectively. In an attempt to determine the
12 specificity of these substrates for proteasome-mediated degradation, the effects of
13 irreversible proteasome inhibitors (lactacystin and epoxomicin) and a calpain inhibitor
14 (MDL 28170) on proteolytic activity was monitored. These inhibitors were directly
15 added to purified 20S proteasome, calpain enzyme, and also control cell extracts,
16 prior to assessment of protease activity. A summary of the inhibitory effects of these
17 inhibitors is given in Table 1.
18
19
20
21
22
23
24
25
26
27
28
29
30
31

32 Lactacystin (10 μ M) completely inhibited the CLA of purified 20S, inhibited TLA by
33 72 % and had no effect on PLA. In contrast epoxomicin (10 μ M), reported to be a
34 more specific proteasome inhibitor (Kisselev and Goldberg, 2005), completely
35 inhibited both CLA and TLA of purified 20S and inhibited PLA by 80 %. The
36 sensitivity of CLA in cell extracts to lactacystin was similar to its sensitivity in 20S,
37 but TLA in cell extracts was insensitive to 10 μ M lactacystin, as has been reported
38 elsewhere for cell extracts (Kisselev & Goldberg, 2005). In cell extracts the
39 sensitivities of CLA and PLA to epoxomicin were similar to 20S, suggesting that the
40 substrates used for CLA and PLA were specific to the proteasome. In the case of
41 TLA, however, epoxomicin reduced the activity by only 25 % suggesting that other
42 proteases are cleaving the TLA substrate.
43
44
45
46
47
48
49
50
51
52
53
54
55
56
57
58
59
60

1
2
3
4
5
6
7
8
9
10
11
12
13
14
15
16
17
18
19
20
21
22
23
24
25
26
27
28
29
30
31
32
33
34
35
36
37
38
39
40
41
42
43
44
45
46
47
48
49
50
51
52
53
54
55
56
57
58
59
60

The calpain enzyme was completely inhibited by 10 μ M MDL 28170. Addition of MDL 28170 to purified 20S proteasome resulted in 25% and 58% inhibition of CLA and TLA, respectively, and no inhibition of PLA. Lactacystin inhibited the activity of the calpain enzyme by around 40 % whilst epoxomicin had no effect. This confirms that epoxomicin is a more specific proteasome inhibitor than the more commonly used inhibitor, lactacystin. In cell extracts, 10 μ M MDL 28170 did not inhibit PLA or CLA but inhibited TLA to a similar extent to 20S-TLA (~ 68 %). This would suggest that the TLA substrate can act as a substrate for calpain. Thus in order to estimate TLA in cell extracts the highly specific epoxomicin was used subsequently.

Effect of MPP⁺ and dopamine on proteasomal CLA, PLA and TLA in SH-SY5Y cells

The effects of a 72 h exposure to mildly and highly toxic concentrations of MPP⁺ and dopamine on the three proteasomal activities were initially checked. Control cell extracts exhibited all three proteolytic activities with the measured trypsin-like activity being the most active (Table 2a); this is consistent with data obtained using commercial human 20S proteasome (data not shown). To confirm whether the activity measured was proteasome-mediated, extracts were assayed in the presence or absence of epoxomicin.

Table 2a shows that mildly toxic concentrations of dopamine and MPP⁺ (100 μ M) had no effect on the three proteasomal activities. However, highly toxic concentrations of MPP⁺ (2 mM) reduced CLA and PLA by 80-90%. Highly toxic concentrations of dopamine (500 μ M) had a smaller effect, reducing CLA and PLA by approximately 50 %, whilst neither toxin reduced TLA. Due to the less specific nature of the TLA substrate, Boc-LLR-AMC, TLA which was sensitive to epoxomicin was regarded as

1
2
3 'true' proteasomal TLA (Table 2b). Data in Table 2b show that 'true' TLA was not
4
5 reduced by low or high levels of either MPP⁺ or dopamine; indeed TLA appeared to
6
7 be activated by 100 μ M MPP⁺ and 500 μ M dopamine.
8
9

10 11 12 13 **Effect of MPP⁺ and dopamine on CLA, ATP and glutathione levels in SH-SY5Y** 14 15 **cells.**

16
17 The possible roles of ATP and glutathione in maintaining proteasomal activity in
18
19 response to MPP⁺ and dopamine treatment was assessed, focusing on CLA since it is
20
21 the most well characterized and was sensitive to MPP⁺/dopamine treatment.
22
23

24
25 Control SH-SY5Y cells typically contained 5.5 ± 1.2 nmols of ATP and 20.8 ± 3.7
26
27 pmols of glutathione per μ g of protein. Figure 2 represents a time course of CLA,
28
29 ATP and glutathione levels after treatment with 100 μ M and 2 mM MPP⁺ in
30
31 comparison to controls. MPP⁺ affects CLA, ATP and glutathione levels in a dose and
32
33 time-dependent manner. The first significant change with 100 μ M MPP⁺ was a
34
35 reduction in glutathione levels (30 % at 48 h and 56 % at 72 h), followed by a small
36
37 reduction (20 %) in ATP at 48/72 h. 100 μ M MPP⁺ had no significant effect on CLA
38
39 activity at 24 h and 48 h, however it was reduced by 30 % at 72 h.
40
41

42
43 With 2 mM MPP⁺ the first significant change was again a reduction in glutathione,
44
45 which occurred at 24 h (31 %) increasing to 67 % and 82 % after 48 h and 72 h. CLA
46
47 was also reduced earlier with 2 mM MPP⁺ than with 100 μ M MPP⁺, being
48
49 significantly reduced by 46 % at 48 h and 78 % at 72 h. As for CLA, ATP levels were
50
51 also reduced by the 48 h time-point (48 % reduction cf. controls, increasing to 69 %
52
53 after 72 h). It thus appears that a reduction in both glutathione and ATP are needed
54
55 prior to a reduction in CLA.
56
57
58
59
60

1
2
3 The effects of 100 μ M dopamine on CLA were similar to MPP⁺ (30 % reduction at 72
4 h); in this case, however, glutathione levels were significantly increased (176 % cf.
5 controls) at 24 h and were not reduced (by 23 %) until 72 h. ATP levels were not
6 affected by this concentration of dopamine at any of the time points tested (Fig. 3).

7
8
9
10
11
12 With 500 μ M dopamine, glutathione was again increased at 24 h (200 % in
13 comparison to controls), but was reduced by 17 % and 77 % at 48 and 72 h
14 respectively. ATP levels were non-detectable by 48 hours but CLA was not
15 significantly reduced until 72 h. Thus it appears that ATP is less important for
16 maintenance of CLA in the presence of dopamine in this system.
17
18
19
20
21
22
23
24
25
26

27 **Assessment of the level of reactive oxygen species (ROS) in SH-SY5Y cells** 28 **following toxin exposure.** 29

30
31
32 To investigate the possible implication of increased ROS in MPP⁺ and dopamine
33 toxicity in our model, 2,7-dichlorodihydrofluorescein diacetate (DCHDF), a dye
34 which is used as an indicator of peroxynitrate formation, was used. Following
35 enzymatic or base-catalysed cleavage of the diacetate group, DCFDH is readily
36 oxidised to the highly fluorescent product dichlorofluorescein (DHF). The formation
37 of DHF can be monitored by confocal laser microscopy.
38
39
40
41
42
43
44
45

46 Cells in 8-well chamber slides were treated with 2 mM MPP⁺, 100 μ M dopamine or 2
47 mM BSO for up to 72 h. Since higher concentrations of dopamine (i.e. 500 μ M and 2
48 mM) caused significant detachment from these chamber slides, a concentration of 100
49 μ M had to be used for these experiments. A large increase in the level of ROS was
50 evident when cells were exposed to dopamine, in contrast to cells exposed to MPP⁺
51 where ROS production was low (Fig. 4). Treatment of cells with 2 mM BSO (which
52 blocks glutathione synthesis; Fig. 6) also resulted in the formation of large amounts of
53
54
55
56
57
58
59
60

1
2
3
4 ROS. To investigate whether ROS formation could be blocked the effect of N-acetyl
5
6 cysteine (NAC; at 1 mM), a precursor for glutathione, was included. Indeed,
7
8 dopamine and MPP⁺ treated cells incubated in the presence of NAC showed a
9
10 reduction in the level of ROS formed.
11

12 13 14 15 **Effect of anti-oxidants on proteasomal activity following toxic insult**

16
17 To establish whether the decrease in proteasomal activity caused by the toxins could
18
19 be partly due to oxidative stress, the effect 1 mM NAC on proteasomal activity of SH-
20
21 SY5Y cells after 72 h exposure to toxic concentrations of MPP⁺ and dopamine was
22
23 monitored.
24
25

26
27 Figure 5A shows that NAC alone had no effect on CLA but 2 mM MPP⁺ or dopamine
28
29 drastically reduced CLA to 13.7 % and 0.5 % of controls, respectively. In the case of
30
31 dopamine, the decrease in proteasomal activity by this highly toxic concentration (2
32
33 mM) was significantly reversed by 1 mM NAC (activity increasing from 0.5 % to
34
35 52.3 % of control). However, 1 mM NAC did not significantly protect CLA from
36
37 MPP⁺ toxicity. Similar results were obtained with other anti-oxidants (including
38
39 ascorbic acid, data not shown). Visualization of cell morphology of cells exposed to
40
41 toxins alone and cells exposed to toxins in the presence or absence of NAC also
42
43 suggested that NAC could partly reverse the effects of dopamine, but not MPP⁺ (Fig.
44
45 5B). Furthermore cells treated with dopamine and NAC were healthy and the
46
47 autooxidation of dopamine, as evidenced by the colour of the growth medium, was
48
49 prevented by NAC. These data indicate that the effects of dopamine (but not MPP⁺)
50
51 on cellular proteasome activity are likely to be primarily due to oxidative damage.
52
53
54
55
56
57
58
59
60

Glutathione depletion results in a reduction in both CLA and ATP levels in SH-SY5Y cells

To investigate whether glutathione depletion may be involved in reductions in CLA following treatment with MPP⁺ and dopamine, glutathione levels were artificially depleted by 2 mM L-buthionine-[S,R]-sulfoximine (BSO), an inhibitor of γ - glutamyl cysteine synthase, an enzyme involved in the glutathione biosynthetic pathway.

As expected, 2 mM BSO virtually depleted glutathione levels as early as 24h (Fig. 6). ATP levels were also reduced by 20-30 % after 48 and 72 h and by 65 % after 96 h. Although CLA was reduced by around 30 % at 72 h, the reduction in CLA was only significant (> 50 %) after 96 h treatment with 2 mM BSO, suggesting that depletion of glutathione levels can eventually lead to proteasome impairment, possibly involving effects on ATP synthesis.

Effect of glutathione depletion on CLA in MPP⁺- and dopamine-treated cells

As indicated earlier, glutathione depletion alone using BSO (2 mM) over 72 h had no significant effect on CLA (Fig. 6) whilst a 72 h exposure to 100 μ M MPP⁺ or dopamine resulted in a reduction in CLA (Figs. 2 and 3). However, when BSO was added in the presence of MPP⁺ or dopamine , it caused a further significant reduction in CLA (Fig. 7).

Direct effect of MPP⁺, MPTP and dopamine on CLA, TLA and PLA activities in purified 20S proteasome.

The effects of MPP⁺ and dopamine on CLA in cell extracts was initially tested by addition of these toxins directly to a fluorogenic peptide assay containing 25-30 μ g

1
2
3 cell extract. Whilst 100 μM MPP^+ and dopamine had no effect, both 2 mM MPP^+ and
4
5
6 2 mM dopamine significantly reduced CLA by 13 % of controls (data not shown).
7
8
9

10
11 The direct effects of the toxins on the three activities of purified human 20S were also
12
13 tested, in order to check if (a) the different activities were sensitive to these chemicals
14
15 and (b) whether the three activities were affected to the same extent. Both dopamine
16
17 and MPP^+ reduced all three proteasomal activities but the sensitivity to low toxin
18
19 concentrations was generally in the order of $\text{CLA} > \text{PLA} > \text{TLA}$ (Table 3). All three
20
21 activities appeared more sensitive to dopamine treatment than to MPP^+ (this is
22
23 particularly evident with 500 μM MPP^+ /dopamine, Table 3). In addition the effect of
24
25 MPTP, which gives rise to MPP^+ via oxidative deamination, was also checked.
26
27 Surprisingly, MPTP also reduced CLA and PLA (PLA being the most sensitive) but
28
29 did not affect TLA.
30
31
32
33
34
35
36

37 **Effect of ascorbic acid (vitamin C) and N-acetyl-cysteine (NAC) on neurotoxin-** 38 39 **mediated reductions in purified human 20S proteasome activity.** 40 41 42

43
44 Both Vitamin C and NAC protected CLA of the purified 20S proteasome against 2
45
46 mM MPP^+ , MPTP and dopamine (Table 3) to a similar extent. Less vitamin C was
47
48 needed to reverse the effects of MPP^+ and MPTP than dopamine, indicative of the
49
50 stronger oxidative nature of dopamine (results not shown).
51
52
53
54
55
56
57
58
59
60

Discussion

This paper reports a study of the effects of two compounds of relevance to PD on the human proteasome; MPP⁺ since it is known to reproduce some of the biochemical deficits of PD including inhibition of complex I (Forno 1996; Przedborski and Jackson-Lewis 1998), and dopamine because dopaminergic neurons are selectively lost in PD and dopamine is implicated in the disease process (Asanuma *et al.* 2003; Smythies 1999). We have addressed the relative roles of ATP and ROS in the determination of proteasome activity using human dopaminergic neuroblastoma cells, since previous work used rat cells. In particular we have concentrated on glutathione levels and have assessed all three proteolytic activities of the proteasome. By also studying the direct effects of these toxins on purified 20S activities we have been able to distinguish between the primary and secondary effects of the toxins on the proteasome.

Our results show that both complex I inhibition by MPP⁺ and the presence of dopamine lead to a reduction in CLA and PLA (but not TLA) in our cells. We have also shown, for the first time that MPP⁺ and dopamine added directly to purified 20S proteasome samples cause a reduction in proteasomal activity; with dopamine being more damaging and 20S-CLA most sensitive, followed by 20S-PLA and 20S-TLA. All three activities have previously been assessed in a limited number of human post-mortem PD samples (McNaught *et al.* 2003; McNaught and Jenner 2001), in rodent models treated chronically with MPTP (Fornai *et al.*, 2005) or rotenone (Betarbet *et al.* 2006) and in rodent cell lines treated with complex 1 inhibitors (rotenone and MPP⁺; Hoglinger *et al.* 2003) and 6-hydroxydopamine (Elkon *et al.* 2004). In these reports no attempt has been made to confirm the activities reported are truly

1
2
3 proteasomal and no differences in sensitivity between the three activities were
4 highlighted. However, close inspection of the data would indicate that differences did
5 exist in some instances (McNaught and Jenner 2001; Elkon *et al.* 2004; Fornai *et al.*,
6 2005). A difference in sensitivities of the three activities is of great interest since the
7 three active sites contribute differently and independently to protein breakdown
8 (inhibition of multiple sites is required to markedly decrease proteolysis) and their
9 relative importance varies with the substrate (Kisselev *et al.*, 2006).

10
11
12
13
14
15
16
17
18
19
20
21
22 The effects of dopamine and MPP⁺ on purified 20S-CLA *in vitro* were reversed by
23 ascorbic acid. Since ascorbic acid may form direct complexes with test compounds,
24 independent of its antioxidant properties (Zou *et al.*, 2006), we confirmed that the
25 effects of dopamine and MPP⁺ were via an oxidative mechanism by showing that
26 NAC could also attenuate the loss in 20S activity. Indeed dopamine is well known to
27 be a strong oxidant and MPP⁺ has previously been reported to cause direct oxidative
28 damage to proteins (Joffe *et al.* 1998; Cassarino *et al.* 1999; Cappelletti *et al.* 2005).
29 We find that MPTP (which can oxidise at room temperature in solution; Przedborski
30 *et al.*, 2001), also causes oxidative damage to 20S-CLA and 20S-PLA but has no
31 significant effect on 20S-TLA. This supports the lower sensitivity of 20S-TLA in
32 human cells. The nature of the inhibition of purified 20S proteasome by MPP⁺, MPTP
33 and dopamine appears to be non-competitive (K_m unaffected, V_{max} reduced;
34 Supplementary Figure 1). The fact that the three PD mimetics used in this study could
35 directly affect 20S activity would suggest that chemicals with this type of structure
36 may have direct deleterious effects on the UPS *in vivo*, acting as non-competitive
37 inhibitors, if their concentrations are sufficiently high. In support of this we found that
38
39
40
41
42
43
44
45
46
47
48
49
50
51
52
53
54
55
56
57
58
59
60

1
2
3 2 mM MPP⁺ and 2 mM dopamine consistently reduced CLA, albeit by only 13%,
4
5 when added to control cell extracts.
6
7

8
9
10 The fact that TLA activity was not reduced in cells and least affected in the 20S
11 samples would suggest that the subunits involved with the catalytic aspects of TLA
12 (namely β 2, β 6) or TLA regulation (α -subunits.) are less sensitive to oxidative stress,
13
14 at least in human proteasomes exposed to damaging compounds/environments for
15 relatively short time periods. Interestingly, similar direct effects of MPP⁺, MPTP and
16 dopamine were observed on the activity of pure trypsin enzyme; however, 20S-TLA
17 was more sensitive than trypsin to dopamine (results not shown). This may indicate
18 that some of the oxidative damage could be affecting the non-catalytic subunits which
19 can moderate 20S-TLA.
20
21
22
23
24
25
26
27
28
29
30
31
32
33

34 When complex 1 in SH-SY5Y cells is inhibited by MPP⁺ we find that both ATP and
35 glutathione are depleted, but that ATP levels are likely to be the most important in
36 determining whether or not CLA is reduced since removal of ROS via NAC does not
37 protect against the effect. This is similar to the situation in rat primary mesencephalic
38 cultures where ATP appeared to be reduced to a threshold level by MPP⁺ and
39 rotenone (20% of control value following a 6hr exposure) prior to generalized cell
40 death linked with a 30-60 % reduction in UPS activity. Increasing ATP levels to
41 approximately 40% of controls, by glucose supplementation, reversed the effect on
42 proteasomal activities (Gluck *et al.* 2002; Hoglinger *et al.* 2003). However, in the
43 present study ATP levels were reduced to only 80 % of controls by MPP⁺ treatment
44 before significant reductions in CLA occurred. This may suggest that human cells are
45 more sensitive than rat cells to MPP⁺ toxicity. Whilst proteasome impairment can be
46
47
48
49
50
51
52
53
54
55
56
57
58
59
60

1
2
3 mediated via ATP depletion it can also be independently influenced by ROS. Indeed,
4 we find that glutathione depletion with BSO exacerbates the effect of MPP⁺ on CLA.
5
6 Betarbet *et al* (2006) showed that chronic exposure of human SK-N-MC
7 neuroblastoma cells to rotenone reduced the UPS, an effect dependant on complex 1
8 inhibition, but in this case without ATP depletion. The effect was attenuated by α -
9 tocopherol, indicating the involvement of oxidative stress with this complex 1
10 inhibitor. So it would appear that different complex 1 inhibitors have different effects.
11
12
13
14
15
16
17
18
19
20
21

22 Following treatment of SH-SY5Y cells with high levels of dopamine ATP depletion
23 also occurred, presumably via complex 1 inhibition as previously shown in
24 mitochondrial samples (Morikawa *et al.* 1996; Ben-Shachar *et al.* 2004) and in intact
25 cells (Morikawa *et al.* 1996; Blum *et al.* 2001; Gimenez-Xavier *et al.* 2006). Indeed,
26 in our experiments ATP levels were drastically reduced following a 24 h exposure to
27 500 μ M dopamine. However, CLA was not affected until later time points. ATP
28 levels were unaffected by 100 μ M dopamine during a 72 h time-course, but CLA was
29 significantly reduced. As expected dopamine was seen to produce vast amounts of
30 ROS which could directly damage the proteasome, since the effects of dopamine on
31 CLA were reversed by the anti-oxidant, NAC. The fact that dopamine treatment
32 resulted in early increases in glutathione levels, as previously reported (Dringen 2000;
33 Haque *et al.* 2003), supports the notion that the cells are responding to oxidative
34 stress. Indeed dopamine did not lead to decrease in proteasomal activity until
35 glutathione levels had been reduced. In addition, when dopamine was added together
36 with BSO, CLA activity was further affected. We also found that dopamine, added at
37 very high concentrations, could reduce 20S activity of cell extracts. Thus in the
38 presence of dopamine, ATP levels are less important than ROS levels in the
39
40
41
42
43
44
45
46
47
48
49
50
51
52
53
54
55
56
57
58
59
60

1
2
3 maintenance of proteasomal activity, as is the case for cell viability in general (Blum
4
5
6 *et al.* 2001; Morikawa *et al.* 1996).
7
8
9

10 As argued recently (Morikawa *et al.* 1996; Blum *et al.* 2001; Gimenez-Xavier *et al.*
11
12 2006) although dopamine concentrations of 100-500 μM , as used in this work, would
13
14 be considered as being above normal physiological values, since extracellular
15
16 concentrations are reported to be of the order on nM in the substantia nigra and
17
18 striatum, the intracellular striatum concentration is estimated to be around 70 μM ,
19
20 whilst the concentration in neuronal endings can be in the mM range. Thus it would
21
22 seem likely that the extracellular dopamine concentrations used in the present study
23
24 would lead to intracellular concentrations that are found in vivo in dopaminergic
25
26 neurons with disrupted vesicles or vesicles not storing dopamine efficiently.
27
28
29
30
31
32
33

34 It has been reported that the ATP and ubiquitin dependent 26S is four times more
35
36 vulnerable to oxidative stress than 20S (Reinheckel *et al.* 1998). This could be related
37
38 to possible oxidative effects on the various regulatory subunits of the 26S proteasome
39
40 (McNaught *et al.* 2003; Ishii *et al.* 2005). However, oxidative damage is not solely
41
42 confined to the regulatory subunits since the β -subunits of the 20S are also reported to
43
44 be targets in SH-SY5Y cells (Shamoto-Nagai *et al.* 2003). Whether or not the toxins
45
46 lead to selective loss or damage to specific proteasome subunits is currently being
47
48 studied in our system. It is entirely possible that some of the effects detected via
49
50 measurement of 20S activity in our cellular homogenates occur via damage to the
51
52 regulatory subunits, given that our extraction system contained ATP and would
53
54 conserve at least some 26S particles (Coux *et al.* 1996). More importantly, a reduction
55
56 in intracellular ATP levels (discussed above) could result in the dissociation of 26S
57
58
59
60

1
2
3 proteasomes into the less active 20S proteasome (Bernaroudj et al. 2003; Kisselev and
4 Goldberg, 2005). This could therefore contribute, in part, to the reduction in the
5
6 measured activity.
7
8
9

10
11
12 Thus our work add further support to the suggestion that complex 1 inhibition/defects,
13 whether due to the effects of toxins or due to genetic predisposition, leads to selective
14 problems in dopamine containing neurons since both oxidative stress and ATP
15 depletion will contribute independently to loss of proteasomal function. It is likely
16 that complex 1 inhibition in non-dopamine containing cells would be less damaging,
17 and in this case ATP depletion rather than ROS would be the important determinant
18 of 20S activity. It should also be noted that, since both MPP⁺ and dopamine cause
19 oxidative damage to purified 20S, they could have a significant direct effect on
20 cellular proteasomal activity, provided their intra-cellular concentrations are high.
21
22
23
24
25
26
27
28
29
30
31
32
33
34
35
36
37
38
39
40
41
42
43
44
45
46
47
48
49
50
51
52
53
54
55
56
57
58
59
60

Reference List

Anderson M. E. (1985) Determination of glutathione and glutathione disulfide in biological samples. *Methods Enzymol.* **113**, 548-55.

Asanuma M., Miyazaki I. and Ogawa N. (2003) Dopamine- or L-DOPA-induced neurotoxicity: The role of dopamine quinone formation and tyrosinase in a model of Parkinson's disease. *Neurotoxicol. Res.* **5**, 165-176.

Beal M. F. (2001) Experimental models of Parkinson's disease. *Nat. Rev. Neurosci.* **2**, 325-332.

Ben-Shachar D., Zuk R., Gazawi H. and Ljubuncic P. (2004) Dopamine toxicity involves mitochondrial complex I inhibition: implications to dopamine-related neuropsychiatric disorders. *Biochem. Pharmacol.* **67**, 1965-1974.

Benaroudj N, Zwickl P, Seemuller E, Baumeister W, Goldberg AL. (2003) ATP hydrolysis by the proteasome regulatory complex PAN serves multiple functions in protein degradation. *Mol Cell.* **11**, 69-78.

Bennett M. C., Bishop J. F., Leng Y., Chock P. B., Chase T. N. and Mouradian M. M. (1999) Degradation of alpha-synuclein by proteasome. *J Biol Chem* **274**, 33855-33858.

Betarbet R., Canet-Aviles R. A., Sherer T. B., Mastroberardino P. G., McLendon C., Kim J. H., Lund S., Na H. M., Taylor G., Bence N. F., Kopito R., Seo B. B., Yagi T., Klinefelter G., Cookson M. R. and Greenamyre J. T. (2006) Intersecting pathways to neurodegeneration in Parkinson's disease: Effects of the pesticide rotenone on DJ-1, alpha-synuclein, and the ubiquitin-proteasome system. *Neurobiol. Dis.* **22**, 404-420.

1
2
3 Betarbet R., Sherer T. B., MacKenzie G., Garcia O., Panov A. V. and Greenamyre J.
4
5 T. (2000) Chronic systemic pesticide exposure reproduces features of Parkinson's
6
7 disease. *Nat. Neurosci.* **3**, 1301-1306.
8
9

10
11 Blum D., Torch S., Lambeng N., Nissou M., Benabid A. L., Sadoul R. and Verna J.
12
13 M. (2001) Molecular pathways involved in the neurotoxicity of 6-OHDA, dopamine
14
15 and MPTP: contribution to the apoptotic theory in Parkinson's disease. *Prog.*
16
17 *Neurobiol.* **65**, 135-172.
18

19
20 Cappelletti G., Surrey T., Maci R. (2005) The parkinsonism producing neurotoxin
21
22 MPP⁺ affects microtubule dynamics by acting as a destabilising factor. *FEBS Lett.*
23
24 **579**, 4781-4786.
25

26
27 Cassarino D. S., Fall C. P., Smith T. S. and Bennett J. P. (1998) Pramipexole reduces
28
29 reactive oxygen species production in vivo and in vitro and inhibits the mitochondrial
30
31 permeability transition produced by the Parkinsonian neurotoxin methylpyridinium
32
33 ion. *J. Neurochem.* **71**, 295-301.
34

35
36 Cassarino DS, Parks JK, Parker WD Jr, Bennett JP Jr. (1999) The parkinsonian
37
38 neurotoxin MPP⁺ opens the mitochondrial permeability transition pore and releases
39
40 cytochrome c in isolated mitochondria via an oxidative mechanism. *Biochim Biophys*
41
42 *Acta.* **1453**, 49-62.
43

44
45 Cookson M. R., Mead C., Austwick S. M. and Pentreath V. W. (1995) Use of the
46
47 MTT assay for estimating toxicity in primary astrocytes and C6 glioma cell cultures.
48
49 *Toxicol. In Vitro.* **9**, 39±48
50

51
52 Coux O., Tanaka K. and Goldberg A. L. (1996) Structure and functions of the 20S
53
54 and 26S proteasomes. *Ann. Rev. Biochem.* **65**, 801-847.

55
56 Dringen R. (2000) Metabolism and functions of glutathione in brain. *Prog. Neurobiol.*
57
58 **62**, 649-671.
59
60

1
2
3 Duke D. C., Moran L. B., Kalaitzakis M. E., Deprez M., Dexter D. T., Pearce R. K. B.
4 and Graeber M. B. (2006) Transcriptome analysis reveals link between proteasomal
5 and mitochondrial pathways in Parkinson's disease. *Neurogenetics* **7**, 139-148.
6
7

8
9
10 Elkon H., Melamed E. and Offen D. (2004) Oxidative stress, induced by 6-
11 hydroxydopamine, reduces proteasome activities in PC12 cells - Implications for the
12 pathogenesis of Parkinson's disease. *J. Mol. Neurosci.* **24**, 387-400.
13
14

15
16
17 Farrer M. J. (2006) Genetics of Parkinson disease: paradigm shifts and future
18 prospects. *Nat. Rev. Genet.* **7**, 306-318.
19
20

21
22
23 Ferrell K., Wilkinson C. R. M., Dubiel W. and Gordon C. (2000) Regulatory subunit
24 interactions of the 26S proteasome, a complex problem. *Trends in Biochemical*
25 *Sciences* **25**, 83-88.
26
27

28
29
30 Forno L. S. (1996) Neuropathology of Parkinson's disease. *J. Neuropathol. Exp.*
31 *Neurol.* **55**, 259-272.
32
33

34
35 Fornai F, Schluter OM, Lenzi P, Gesi M, Ruffoli R, Ferrucci M, Lazzeri G, Busceti
36 CL, Pontarelli F, Battaglia G, Pellegrini A, Nicoletti F, Ruggieri S, Paparelli A,
37 Sudhof TC. (2005) Parkinson-like syndrome induced by continuous MPTP infusion:
38 convergent roles of the ubiquitin-proteasome system and alpha-synuclein. *Proc. Natl.*
39 *Acad. Sci. U S A.* **102**, 3413-3418.
40
41
42
43

44
45
46 Gimenez-Xavier P., Gomez-Santos C., Castano E., Francisco R., Boada J., Unzeta M.,
47 Sanz E. and Ambrosio S. (2006) The decrease of NAD(P)H has a prominent role in
48 dopamine toxicity. *Biochim. Biophys. Acta - Mol. Basis Dis.* **1762**, 564-574.
49
50

51
52
53 Gluck M., Ehrhart J., Jayatilleke E. and Zeevalk G. D. (2002) Inhibition of brain
54 mitochondrial respiration by dopamine: involvement of H₂O₂ and hydroxyl radicals
55 but not glutathione-protein-mixed disulfides. *J. Neurochem.* **82**, 66-74.
56
57

58
59
60 Goldberg A. L. (1995) Functions of the Proteasome - the Lysis at the End of the
Tunnel. *Science* **268**, 522-523.

1
2
3
4
5 Good P. F., Hsu A., Werner P., Perl D. P. and Olanow C. W. (1998) Protein nitration
6 in Parkinson's disease. *J. Neuropathol. Exp. Neurol.* **57**, 338-342.
7
8

9
10 Graham D. G., Tiffany S. M., Bell W. R. and Gutknecht W. F. (1978) Autoxidation
11 Versus Covalent Binding of Quinones As Mechanism of Toxicity of Dopamine, 6-
12 Hydroxydopamine, and Related Compounds Toward C1300-Neuroblastoma Cells
13 Invitro. *Mol. Pharmacol.* **14**, 644-653.
14
15
16
17

18
19 Gu M., Owen A. D., Toffa S. E. K., Cooper J. M., Dexter D. T., Jenner P., Marsden
20 C. D. and Schapira A. H. V. (1998) Mitochondrial function, GSH and iron in
21 neurodegeneration and Lewy body diseases. *J. Neurol. Sci.* **158**, 24-29.
22
23
24
25

26 Haque M. E., Asanuma M., Higashi Y., Miyazaki I., Tanaka K. and Ogawa N. (2003)
27 Apoptosis-inducing neurotoxicity of dopamine and its metabolites via reactive
28 quinone generation in neuroblastoma cells. *Biochim. Biophys. Acta – Gen. Subj.* **1619**,
29 39-52.
30
31
32
33

34
35 Hensley K., Pye Q. N., Maidt M. L., Stewart C. A., Robinson K. A., Jaffrey F. and
36 Floyd R. A. (1998) Interaction of alpha-phenyl-N-tert-butyl nitron and alternative
37 electron acceptors with complex I indicates a substrate reduction site upstream from
38 the rotenone binding site. *J. Neurochem.* **71**, 2549-2557.
39
40
41
42

43
44 Hoglinger G. U., Carrard G., Michel P. P., Medja F., Lombes A., Ruberg M., Friguet
45 B. and Hirsch E. C. (2003) Dysfunction of mitochondrial complex I and the
46 proteasome: interactions between two biochemical deficits in a cellular model of
47 Parkinson's disease. *J. Neurochem.* **86**, 1297-1307.
48
49
50
51

52
53 Ishii T., Sakurai T., Usami H. and Uchida K. (2005) Oxidative modification of
54 proteasome: Identification of an oxidation-sensitive subunit in 26 S proteasome.
55 *Biochemistry* **44**, 13893-13901.
56
57
58

59
60 Jenner P. (1993) Altered mitochondrial function, iron metabolism and glutathione
levels in Parkinson's disease. *Acta Neurol Scand Suppl.* **146**, 6-13.

1
2
3
4
5 Jha N, Kumar MJ, Boonplueang R, Andersen JK. (2002) Glutathione decreases in
6 dopaminergic PC12 cells interfere with the ubiquitin protein degradation pathway:
7 relevance for Parkinson's disease? *J Neurochem.* **80**, 555-61.
8
9

10
11 Jiang H, Jiang Q, Feng J. (2004) Parkin increases dopamine uptake by enhancing the
12 cell surface expression of dopamine transporter. *J Biol Chem.* **279**, 54380-6.
13
14
15

16
17 Jiang H, Jiang Q, Liu W, Feng J. (2006) Parkin suppresses the expression of
18 monoamine oxidases. *J Biol Chem.* **281**, 8591-9.
19
20

21
22 Joffe G.T., Parks J.K., Parker W.D. (1998) Secondary inhibition of 2-ketoglutarate
23 dehydrogenase complex by MPTP. *Neuroreport.* **9**, 2781-2783.
24
25

26
27 Kisselev A. F. and Goldberg A. L. (2005) Monitoring Activity and Inhibition of 26S
28 Proteasomes with Fluorogenic Peptide Substrates. *Methods Enzymol.* **398**, 364-378.
29
30

31
32 Kisselev AF, Callard A, Goldberg AL. (2006) Importance of the different proteolytic
33 sites of the proteasome and the efficacy of inhibitors varies with the protein substrate.
34 *J Biol Chem.* **281**, 8582-8590.
35
36
37

38
39 Kowall N. W., Hantraye P., Brouillet E., Beal M. F., Mckee A. C. and Ferrante R. J.
40 (2000) MPTP induces alpha-synuclein aggregation in the substantia nigra of baboons.
41 *Neuroreport* **11**, 211-213.
42
43
44

45
46 Lopiano L., Fasano M., Giraud S., Digilio G., Koenig S. H., Torre E., Bergamasco
47 B. and Aime S. (2000) Nuclear magnetic relaxation dispersion profiles of substantia
48 nigra pars compacta in Parkinson's disease patients are consistent with protein
49 aggregation. *Neurochem. Int.* **37**, 331-336.
50
51
52

53
54
55 Maker H. S., Weiss C., Silides D. J. and Cohen G. (1981) Coupling of Dopamine
56 Oxidation (Monoamine-Oxidase Activity) to Glutathione Oxidation Via the
57 Generation of Hydrogen-Peroxide in Rat-Brain Homogenates. *J. Neurochem.* **36**, 589-
58 593.
59
60

1
2
3
4
5 McNaught K. S. P, Belizaire R., Isacson O., Jenner P. and Olanow C. W. (2003)
6 Altered proteasomal function in sporadic Parkinson's disease. *Exp. Neurol.* **179**, 38-
7 46.
8
9

10
11
12 McNaught K. S. P. and Jenner P. (2001) Proteasomal function is impaired in
13 substantia nigra in Parkinson's disease. *Neurosci. Lett.* **297**, 191-194.
14
15

16
17
18 McNaught K. S. P. and Olanow C. W. (2006) Protein aggregation in the pathogenesis
19 of familial and sporadic Parkinson's disease. *Neurobiol. Aging* **27**, 530-545.
20
21

22
23 McNaught K. S. P., Olanow C. W., Halliwell B., Isacson O. and Jenner P. (2001)
24 Failure of the ubiquitin-proteasome system in Parkinson's disease. *Nat. Rev. Neurosci.*
25 **2**, 589-594.
26
27

28
29
30 Morikawa N., NakagawaHattori Y. and Mizuno Y. (1996) Effect of dopamine,
31 dimethoxyphenylethylamine, papaverine, and related compounds on mitochondrial
32 respiration and complex I activity. *J. Neurochem.* **66**, 1174-1181.
33
34

35
36
37 Orth M. and Schapira A. H. V. (2002) Mitochondrial involvement in Parkinson's
38 disease. *Neurochem. Int.* **40**, 533-541.
39
40

41
42 Perier C., Bove J., Vila M. and Przedborski S. (2003) The rotenone model of
43 Parkinson's disease. *Trends Neurosci.* **26**, 345-346.
44
45

46
47
48 Polymeropoulos M. H., Lavedan C., Leroy E., Ide S. E., Dehejia A., Dutra A., Pike
49 B., Root H., Rubenstein J., Boyer R., Stenroos E. S., Chandrasekharappa S.,
50 Athanassiadou A., Papapetropoulos T., Johnson W. G., Lazzarini A. M., Duvoisin R.
51 C., Di I., Golbe L. I. and Nussbaum R. L. (1997) Mutation in the alpha-synuclein
52 gene identified in families with Parkinson's disease. *Science* **276**, 2045-2047.
53
54
55

56
57
58 Przedborski S. and Jackson-Lewis V. (1998) Mechanisms of MPTP toxicity. *Mov.*
59 *Disord.* **13**, 35-38.
60

1
2
3 Przedborski, S., Jackson-Lewis V., Naini A.B., Jakowec M., Petzinger G., Miller R.,
4 Akram M. (2001) The parkinsonian toxin 1-methyl-4-phenyl-1,2,3,6-tetrahydro-
5 pyridine (MPTP): a technical review of its utility and safety. *J. Neurochem.* **76**, 1265-
6 1274.
7
8
9

10
11
12 Reinheckel T., Sitte N., Ullrich O., Kuckelkorn U., Davies K. J. and Grune T. (1998)
13 Comparative resistance of the 20S and 26S proteasome to oxidative stress. *Biochem J*
14 **335 (Pt 3)**, 637-642.
15
16
17

18
19 Riederer P., Sofic E., Rausch W. D., Schmidt B., Reynolds G. P., Jellinger K. and
20 Youdim M. B. H. (1989) Transition-Metals, Ferritin, Glutathione, and Ascorbic-Acid
21 in Parkinsonian Brains. *J. Neurochem.* **52**, 515-520.
22
23
24

25
26 Santiago M., Granero L., Machado A., Cano J. (1995) Complex I inhibitor effect on
27 the nigral and striatal release of dopamine in the presence and absence of
28 nomifensine. *Eur J Pharmacol.* **280**, 251-6.
29
30
31

32
33 Sasaki T, Kikuchi T, Yumoto N, Yoshimura N, Murachi T. (1984) Comparative
34 specificity and kinetic studies on porcine calpain I and calpain II with naturally
35 occurring peptides and synthetic fluorogenic substrates. *J Biol Chem.* **259**, 12489-
36 12494.
37
38
39

40
41
42 Schapira A. H. V., Cooper J. M., Dexter D., Clark J. B., Jenner P. and Marsden C. D.
43 (1990) Mitochondrial Complex I Deficiency in Parkinsons-Disease. *J. Neurochem.*
44 **54**, 823-827.
45
46
47

48
49 Shamoto-Nagai M., Maruyama W., Kato Y., Isobe K., Tanaka M., Naoi M. and
50 Osawa T. (2003) An inhibitor of mitochondrial complex I, rotenone, inactivates
51 proteasome by oxidative modification and induces aggregation of oxidized proteins in
52 SH-SY5Y cells. *J. Neurosci. Res.* **74**, 589-597.
53
54
55

56
57
58 Sherer T. B., Betarbet R., Stout A. K., Lund S., Baptista M., Panov A. V., Cookson
59 M. R. and Greenamyre J. T. (2002) An in vitro model of Parkinson's disease: linking
60

1
2
3
4
5
6
7
8
9
10
11
12
13
14
15
16
17
18
19
20
21
22
23
24
25
26
27
28
29
30
31
32
33
34
35
36
37
38
39
40
41
42
43
44
45
46
47
48
49
50
51
52
53
54
55
56
57
58
59
60

mitochondrial impairment to altered alpha-synuclein metabolism and oxidative damage. *J Neurosci.* **22**, 7006-7015.

Smythies (1999) The neurotoxicity of glutamate, dopamine, iron and reactive oxygen species: functional interrelationships in health and disease: a review-discussion. *Neurotox Res.* **1**, 27-39.

Stokes A. H., Lewis D. Y., Lash L. H., Jerome W. G., Grant K. W., Aschner M. and Vrana K. E. (2000) Dopamine toxicity in neuroblastoma cells: role of glutathione depletion by L-BSO and apoptosis. *Brain Res.* **858**, 1-8.

Tofaris G. K., Layfield R. and Spillantini M. G. (2001) alpha-Synuclein metabolism and aggregation is linked to ubiquitin-independent degradation by the proteasome. *FEBS Letters* **509**, 22-26.

Tofaris G. K., Razzaq A., Ghetti B., Lilley K. S. and Spillantini M. G. (2003) Ubiquitination of alpha-synuclein in Lewy bodies is a pathological event not associated with impairment of proteasome function. *J. Biol. Chem.* **278**, 44405-44411.

Yoritaka A., Hattori N., Uchida K., Tanaka M., Stadtman E. R. and Mizuno Y. (1996) Immunohistochemical detection of 4-hydroxynonenal protein adducts in Parkinson disease. *Proc. Natl. Acad. Sci. USA* **93**, 2696-2701.

Zou W., Yue P., Lin N., He M., Zhou Z., Lonial S., Khuri F.R., Wang B., Sun S.Y. (2006) Vitamin C inactivates the proteasome inhibitor PS-341 in human cancer cells. *Clin Cancer Res.* **12**, 273-280.

SAMPLE	Inhibitor	Concentration (μM)	% Inhibition		
			CLA	TLA	PLA
20S Proteasome	Lactacystin	10	95**	72*	0
	Epoxomicin	10	100**	98**	80**
	MDL 28170	10	25**	58**	0
SH-SY5Y cell extracts	Lactacystin	10	94**	0	0
	Epoxomicin	10	99**	25*	87*
	MDL 28170	10	0	67**	0

SAMPLE	Inhibitor	Concentration (μM)	% Inhibition Calpain Activity	
Calpain	Lactacystin	10		39**
	Epoxomicin	10		0
	MDL 28170	10		98**

Table 1. Inhibitory effects of lactacystin, epoxomicin and MDL 28170 on purified 20S proteasome, calpain and proteasomal activity of SH-SY5Y cell extracts.

Commercial sources of 20S proteasome (0.05 μg) and calpain (3.6 μg) and SH-SY5Y cell extracts (25 μg) were incubated in the presence of lactacystin, epoxomicin or MDL 28170, prior to the addition of substrate and the measurement of activity.

Results were calculated as $\Delta\text{FU}/\text{s}/\mu\text{g}$ protein and expressed as % inhibition in comparison to control samples. When no significant inhibition was seen values were assigned "0 % Inhibition". Data presented are from a representative experiment where $n=3$. Statistical analysis was carried out using a two-tailed Student's t-test. Statistical significance was accepted when $*=p<0.05$ or $**=p<0.01$ cf. control.

(a)

Substrate	Treatment	Conc (mM)	Proteasomal Activity ($10^2 \Delta\text{FU/s}/\mu\text{g}$)	Activity (%)	Epoxomicin (% Inhibition)
CLA	Control	0	2.89 ± 0.41	100.0	98.9**
		0.1	2.38 ± 0.24	82.5	100.0**
		2	0.58 ± 0.34	20.2*	100.0**
	Dopamine	0.1	3.02 ± 0.72	104.5	100.0**
		0.5	1.60 ± 0.60	55.6*	100.0**
TLA	Control	0	24.5 ± 0.77	100.0	25.4*
		0.1	39.8 ± 1.16	162.7**	31.3*
		2	21.2 ± 1.55	86.9	27.4*
	Dopamine	0.1	27.4 ± 1.18	112.2	22.9*
		0.5	28.3 ± 1.68	115.8	32.2**
PLA	Control	0	1.65 ± 0.08	100.0	87.2*
		0.1	1.62 ± 0.09	98.6	89.3*
		2	0.17 ± 0.18	10.2**	63.4*
	Dopamine	0.1	1.65 ± 0.17	100.3	91.1*
		0.5	0.79 ± 0.09	48.2**	100.0**

(b)

Substrate	Treatment	Conc (mM)	Estimated 'true' TLA (%)
TLA	Control	0	100.0 ± 8.4
		0.1	194.0 ± 3.4**
		2	93.5 ± 23.9
	Dopamine	0.1	99.3 ± 4.3
		0.5	142.5 ± 25.9*

Table 2. Effect of MPP⁺ and dopamine on proteasomal activities from SH-SY5Y cells after 72h exposure. (a) Cells were treated with MPP⁺ and dopamine for 72 h prior to extraction in homogenisation buffer. Proteasome activity (CLA, TLA and PLA) was measured and results presented as $\Delta\text{FU/s} \pm \text{SEM}$ and then converted to mean % activity (cf. control samples). To confirm the activity measured was proteasomal, sample activity was measured in the presence or absence of epoxomicin (10 μM) and the % inhibition calculated. When no significant inhibition was seen values were assigned "0 % Inhibition". The data presented are from a representative experiment with assays replicated in triplicate. Statistical analysis was carried out using a Student's t-test comparing toxin treated samples to their corresponding control. Statistical significance was accepted when * = $p < 0.05$ or ** = $p < 0.01$. (b) Since the measured TLA contains only a fraction of actual proteasomal TLA, 'true' TLA activities were estimated using the appropriate correction factor based on epoxomicin inhibition. Statistical analysis was carried out using a Student's t-Test comparing toxin treated samples to TLA control.

Treatment	Conc (mM)	Proteasomal Activity (% cf. control)			
		CLA		TLA	PLA
		+ AA	+ NAC		
MPP ⁺	0.01	85.4		92.9	88.0
	0.1	71.4**		83.3	89.9
	0.5	43.3**		69.9**	31.6**
	2.0	46.1**	70.0 ^{##}	88.5 ^{##}	57.6**
MPTP	0.01	91.3		97.9	70.1**
	0.1	93.4		97.0	75.5**
	0.5	66.1**		99.6	11.8**
	2.0	27.6**	86.4 ^{##}	83.5 ^{##}	89.4
Dopamine	0.01	29.0**		92.2	65.2**
	0.1	32.6**		79.4**	72.5**
	0.5	12.7**		0.0**	0.0**
	2.0	0.3**	70.2 ^{##}	40.4 ^{##}	0.0**

Table 3. Effects of MPTP, MPP⁺ and dopamine on purified human 20S proteasome and the protective effect of ascorbic acid and N-acetyl-cysteine.

Purified 20S proteasome (0.05 μ g) was incubated in the presence or absence of MPP⁺, MPTP or dopamine for 10 min, prior to measuring CLA, TLA and PLA for 1 hour. The effect of ascorbic acid (+AA; 1 mM) or N-acetyl-cysteine (+NAC; 1 mM) on CLA in the presence of 2 mM MPP⁺, MPTP, or dopamine was also measured. All results are presented as mean % activity in comparison to corresponding controls. Statistical analysis was carried out using the Student's t-test comparing toxin treated samples with corresponding controls (**= p<0.01; n=5) and comparing toxin treated CLA activity with either ascorbic acid or NAC treated CLA activity (^{##} = p<0.01, n=4). N.B. Ascorbic acid (1 mM) and NAC (1 mM) alone had no significant effect on CLA activity.

1
2
3
4 **Fig. 1** Assessment of cell viability in SH-SY5Y cells following MPP⁺ or dopamine
5 exposure. Cells were seeded in 96 well plates at a density of 10,000 cells/well. After
6 24 h medium was exchanged for fresh growth medium supplemented with/without
7 MPP⁺ (100 μM, 2 mM) or dopamine (100 μM, 500 μM) and incubated for a further
8 24, 48 or 72 h, prior to viability assessment using the MTT reduction assay. Data
9 presented are mean cell viability + SEM from three independent experiments.
10
11 Statistical analysis was carried out using the Student's t test comparing toxin treated
12 cells with corresponding time point control, where *= p<0.05.
13
14
15
16
17
18
19
20
21
22
23
24

25 **Fig. 2** Effect of MPP⁺ on CLA, ATP and glutathione levels in SH-SY5Y cells. Cells
26 were exposed to 100 μM or 2 mM MPP⁺ for 24, 48 and 72 h prior to assessment of
27 CLA, ATP or glutathione content. Values were calculated as activity/μg protein and
28 then expressed as % activity (cf. control) ± SEM, where n≥3. Statistical analysis was
29 carried out using the Student's t test comparing cells exposed to MPP⁺ against time
30 point controls, where *= p<0.05.
31
32
33
34
35
36
37
38
39
40
41
42

43 **Fig. 3** Effect of dopamine on CLA, ATP and glutathione levels in SH-SY5Y cells.
44 Cells were exposed to 100 μM or 500 μM dopamine for 24, 48 and 72 h prior to
45 assessment of CLA, ATP or glutathione content. Values were calculated as
46 activity/μg protein and then expressed as % activity (cf. control) ± SEM, where n≥3.
47
48 Statistical analysis was carried out using the Student's t test comparing cells exposed
49 to dopamine against time point controls, where *= p<0.05.
50
51
52
53
54
55
56
57
58
59
60

1
2
3
4
5
6
7
8
9
10
11
12
13
14
15
16
17
18
19
20
21
22
Fig. 4 Determination of the level ROS in SH-SY5Y cells following toxin insult. SH-SY5Y cells were plated out in chamber slides and treated with toxins for 72 h: control (a); 2 mM BSO (b); 2 mM MPP⁺ (c); 100 μM dopamine (d). The addition of NAC (1 mM) to the incubation media was also monitored in cells exposed to 2 mM MPP⁺ (e) or 100 μM dopamine (f) for 72 h. Levels of ROS were determined in the presence of 100 μM DCHDF, pre-loaded for 30 minutes prior to analysis by confocal laser scanning microscopy. Scale bar represents 100 μm.

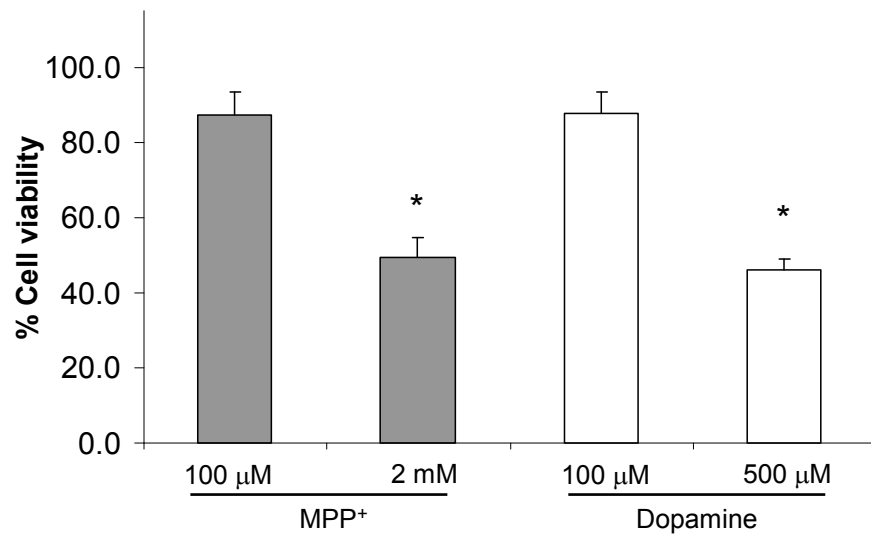
23
24
25
26
27
28
29
30
31
32
33
34
35
36
37
38
39
40
41
42
43
44
45
46
47
48
49
50
51
52
53
Fig. 5 Effect of NAC on CLA and cell morphology after 72 h exposure to MPP⁺ or dopamine. SH-SY5Y cells were exposed to MPP⁺ (2 mM) or dopamine (2 mM) in the presence or absence of 1 mM NAC for 72 h. CLA was monitored using the fluorogenic peptide assay and results were calculated as ΔFU/s/μg and then expressed as Mean % Activity + SEM (cf. control samples) – *panel (a)*. The data shown are from a representative experiment with assays replicated three times. Statistical analysis was carried out using a Student's t-test. Cells exposed to both toxin and antioxidant were compared to cells exposed to toxin alone. Statistical significance was accepted when * = p < 0.05 cf. control or # = p < 0.05 cf. toxin control. *Panel (b)* represents photographs of cells exposed to either MPP⁺ or dopamine in the presence or absence of 1 mM NAC following 72 h exposure. Images were acquired with a Nikon eclipse TS100 inverted microscope. Scale bar = 50 μm.

54
55
56
57
58
59
60
Fig. 6 Effect of BSO on CLA, ATP and glutathione levels in SH-SY5Y cells. Cells were exposed to 2 mM BSO for 24, 48, 72 and 96 h prior to assessment of CLA, ATP or glutathione content. Values were calculated as Activity/μg protein and then expressed as % Activity (cf. control) ± SEM, where n=3. Statistical analysis was

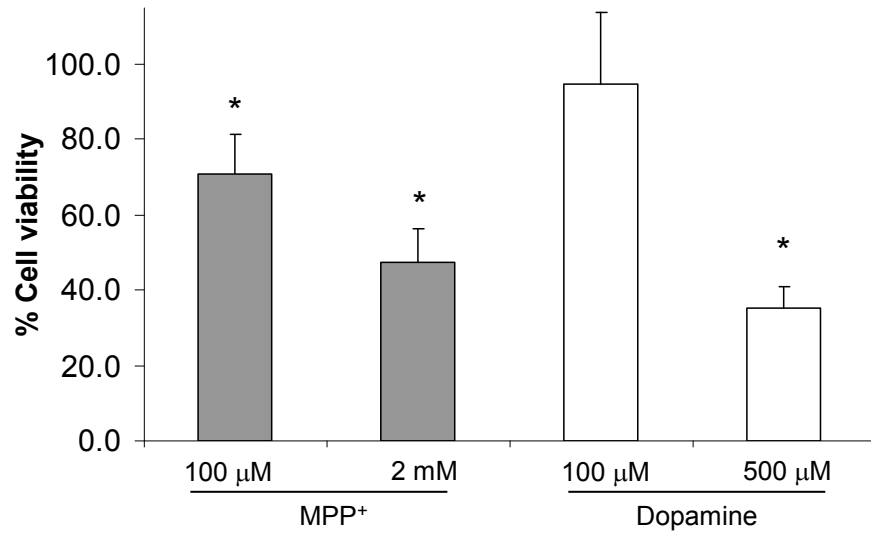
1
2
3 carried out using the Student's t test comparing cells exposed to BSO against time
4
5 point controls, where * = $p < 0.05$.
6
7
8
9

10
11 **Fig. 7** Effect of glutathione depletion on CLA following a 72h exposure to 100 μM
12 MPP⁺ or dopamine. SH-SY5Y cells were exposed to MPP⁺ (100 μM) or dopamine
13 (100 μM) in the presence or absence of 2 mM BSO for 72h, prior to analysis of CLA.
14
15 Results were calculated as $\Delta\text{FU/s}/\mu\text{g}$ and then expressed as mean % Activity (cf.
16 control) + SEM. Statistical analysis was carried out using a Student's t-test comparing
17 samples treated with toxin (MPP⁺, n=4 or dopamine, n=5) to control samples or
18 comparing samples treated with toxin + BSO to samples treated with toxin alone.
19
20 Statistical significance was accepted when * = $p < 0.05$ cf. control or # = $p < 0.05$ cf.
21 toxin control.
22
23
24
25
26
27
28
29
30
31
32
33
34
35
36
37
38
39
40
41
42
43
44
45
46
47
48
49
50
51
52
53
54
55
56
57
58
59
60

a) 24 h



b) 48 h



c) 72 h

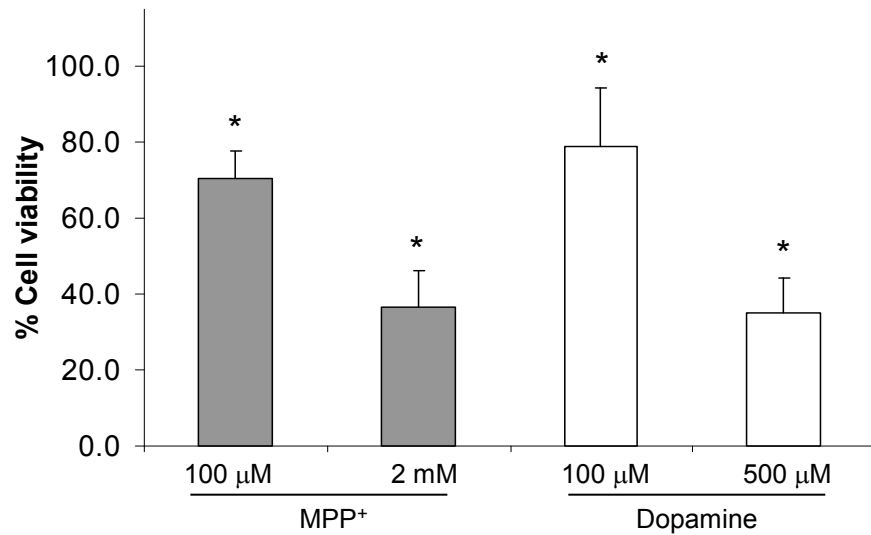


Figure 1

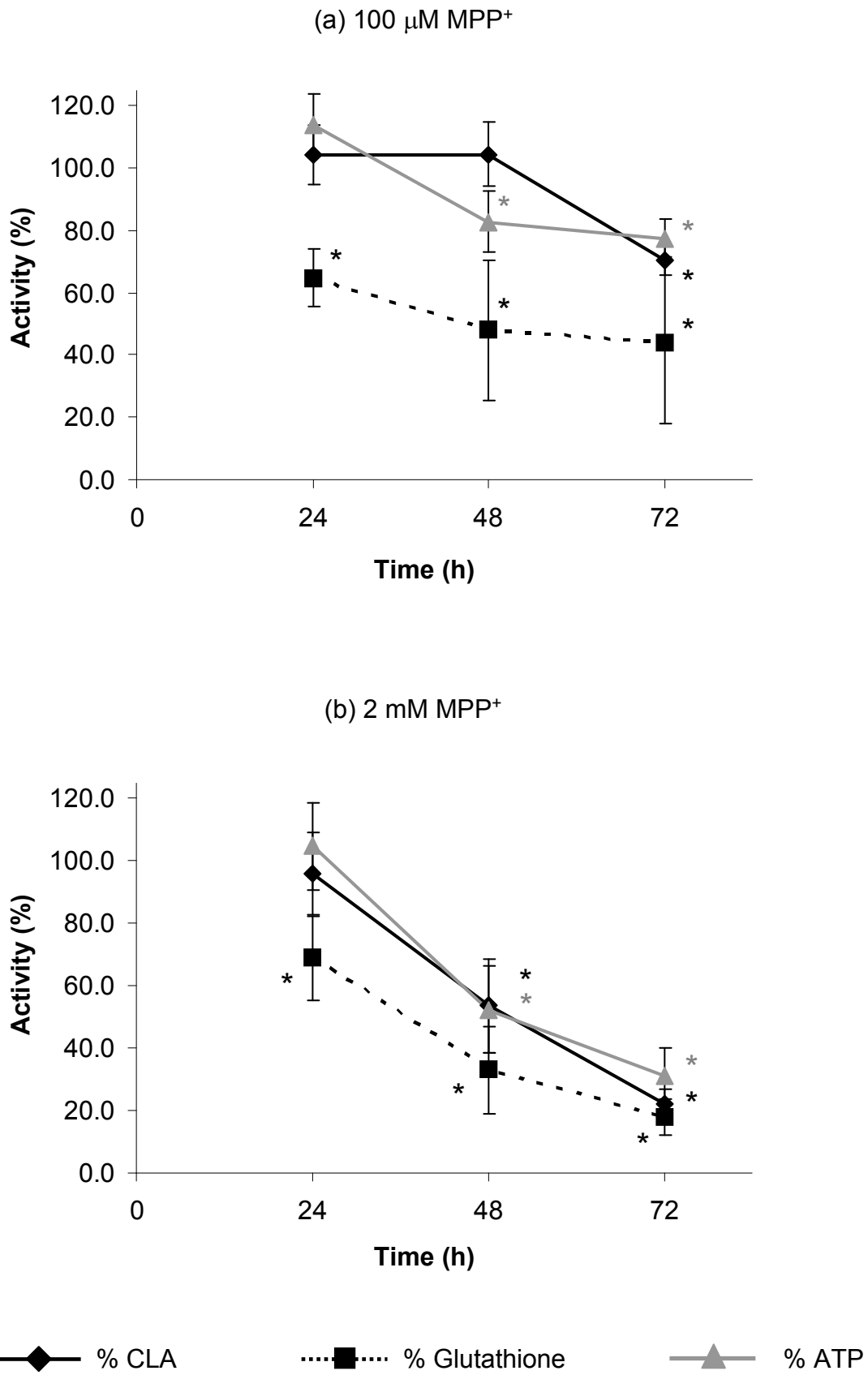


Figure 2

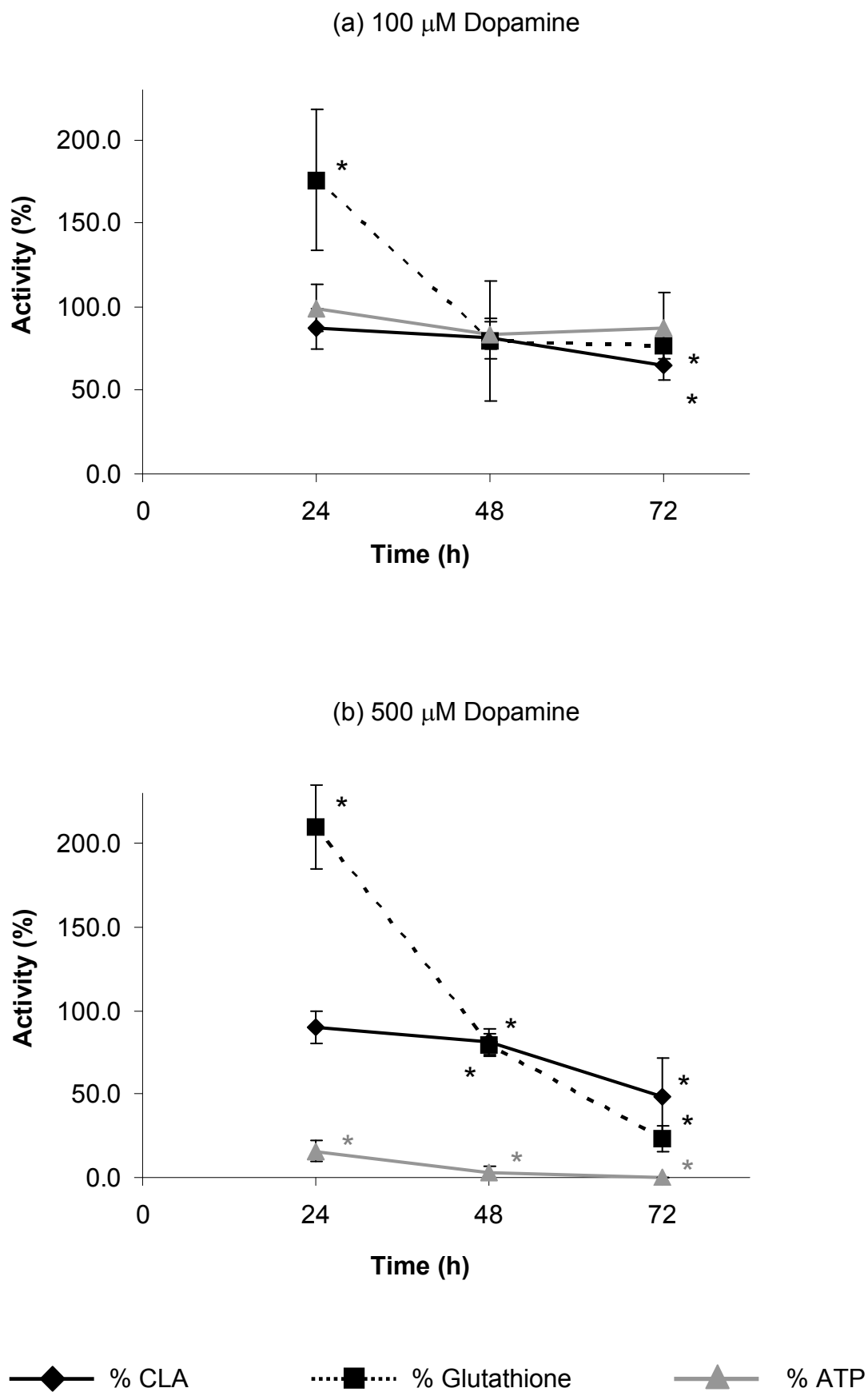
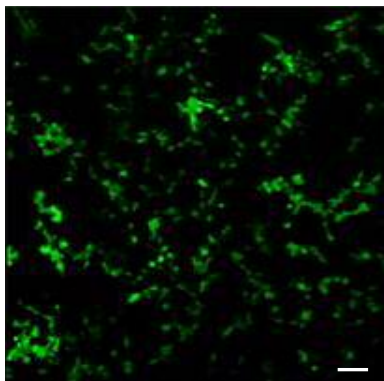
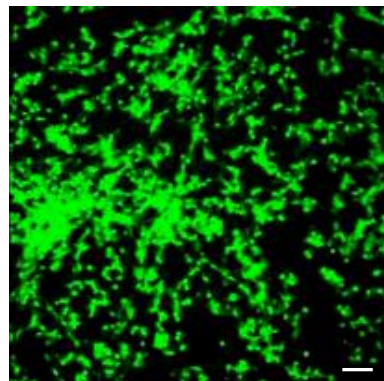


Figure 3

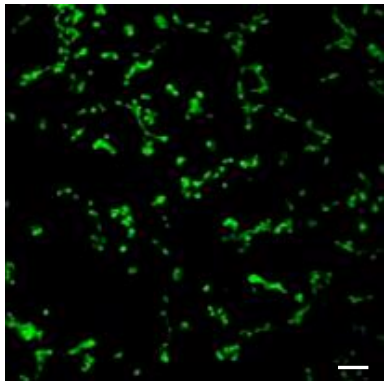
1
2
3
4
5
6
7
8
9
10
11
12
13
14
15
16
17
18
19
20
21
22
23
24
25
26
27
28
29
30
31
32
33
34
35
36
37
38
39
40
41
42
43
44
45
46
47
48
49
50
51
52
53
54
55
56
57
58
59
60



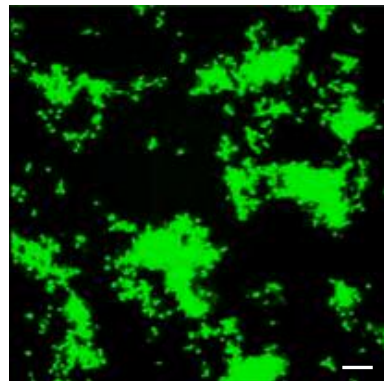
(a) Control



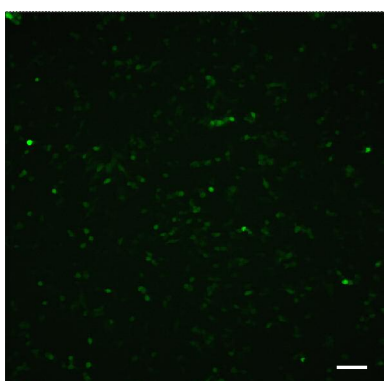
(b) 2 mM BSO



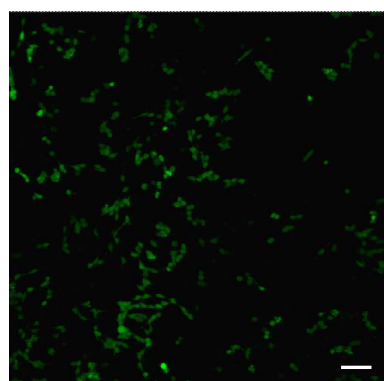
(c) 2 mM MPP+



(d) 100 μM Dopamine



(e) 2 mM MPP+
+ NAC



(f) 100 μM Dopamine +
NAC

Figure 4

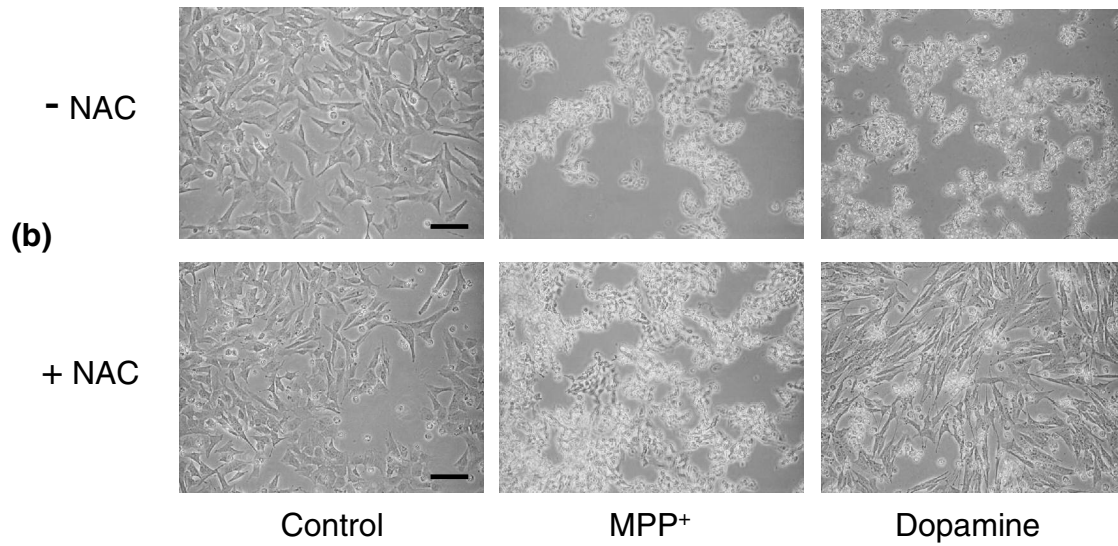
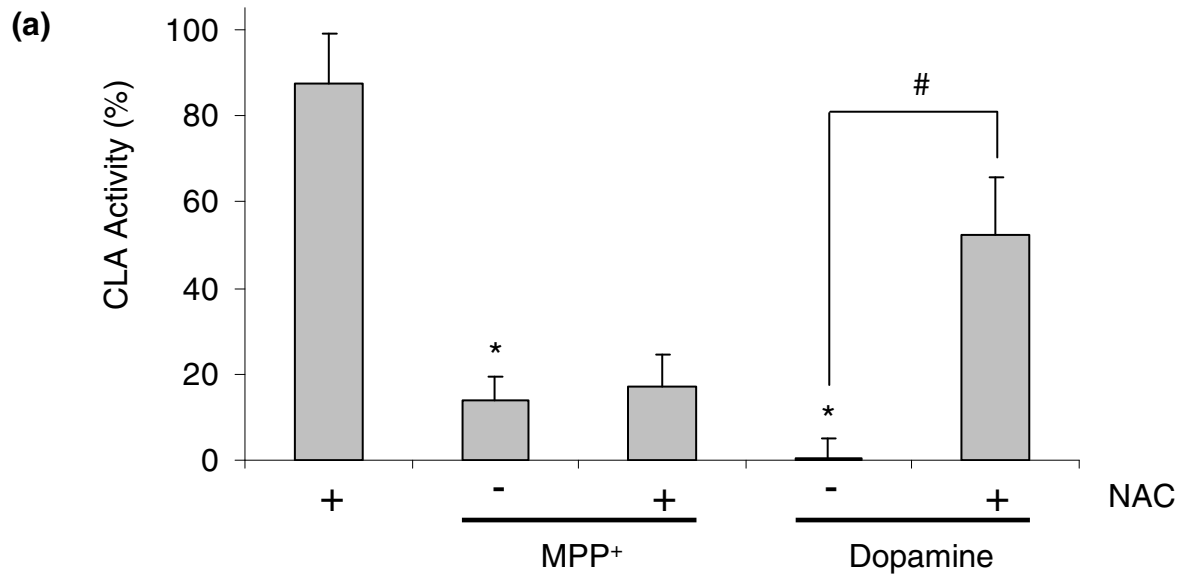


Figure 5

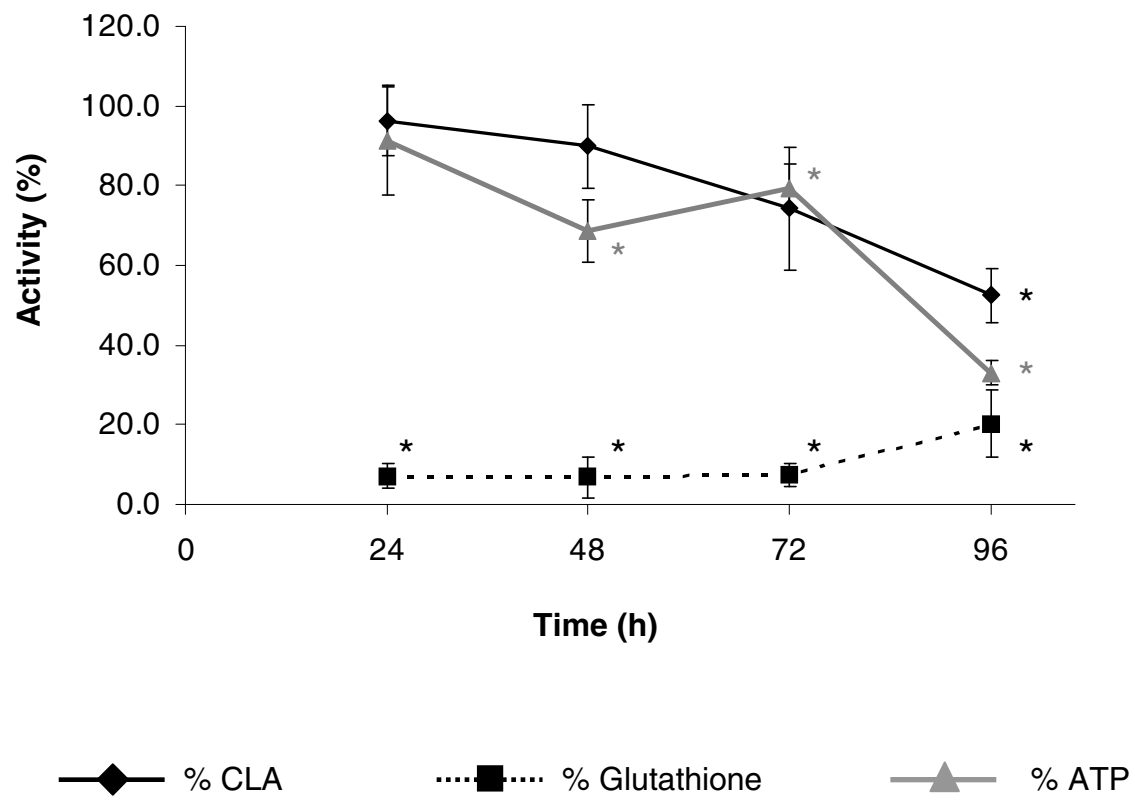


Figure 6

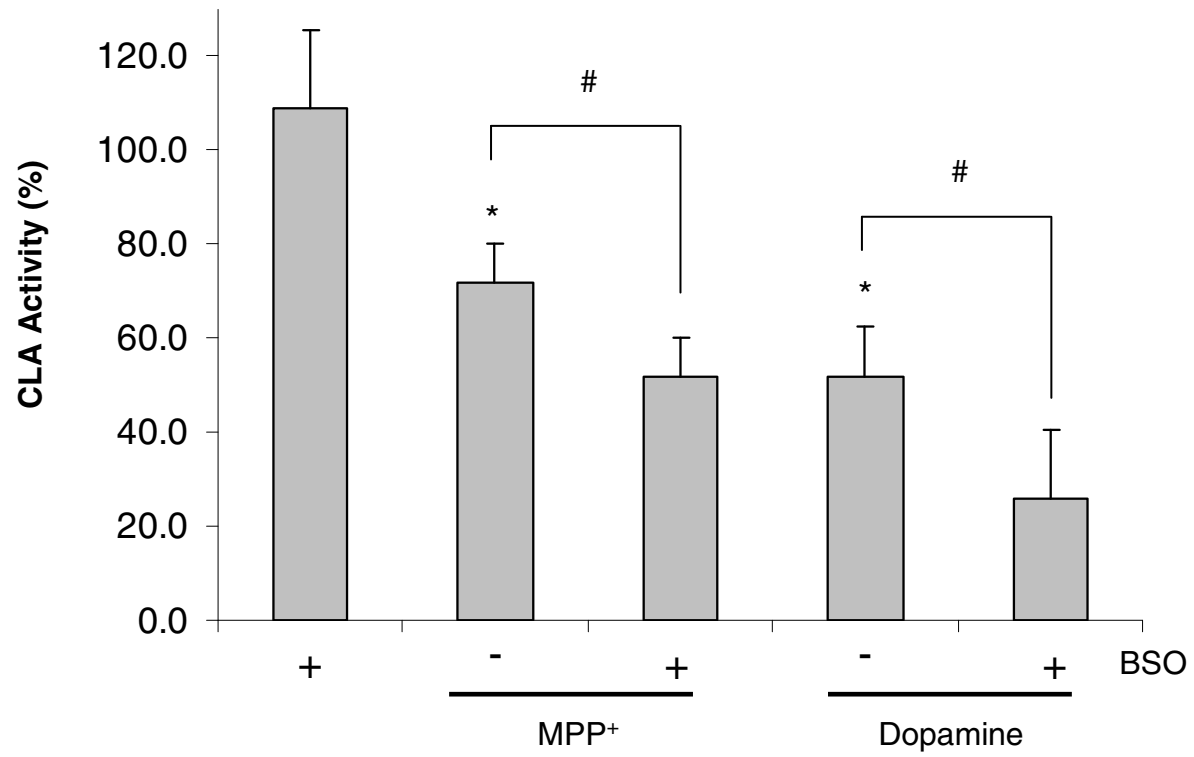
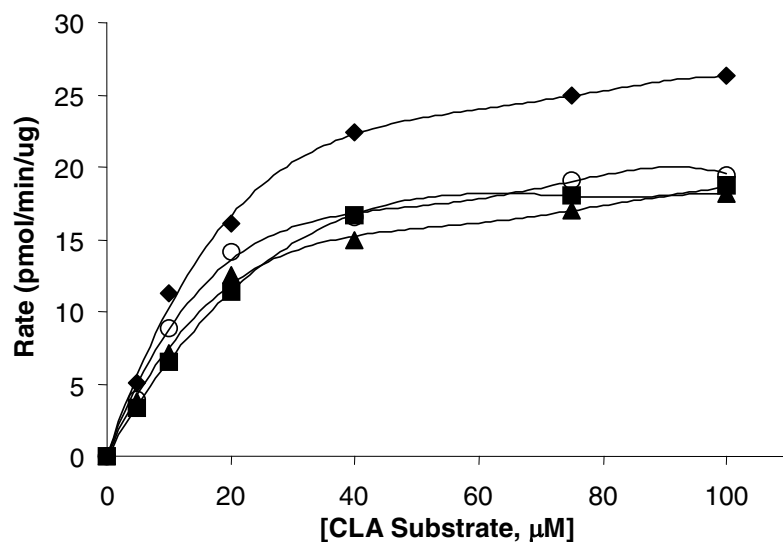
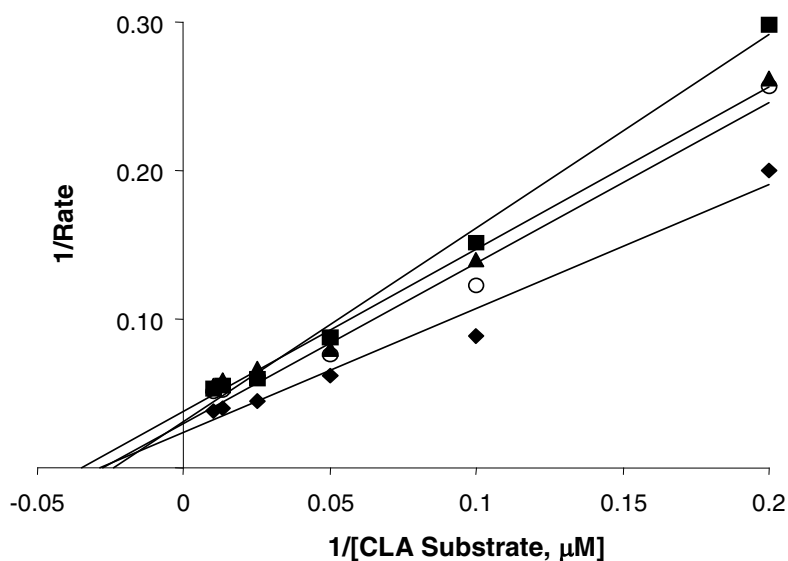


Figure 7

(a)



(b)



(c)

Treatment	k_m ($\mu\text{M} \pm \text{SEM}$)	V_{max} (pmoles/min/ $\mu\text{g} \pm \text{SEM}$)
Control	41.22 ± 7.60	29.49 ± 3.40
500 μM MPP ⁺	44.06 ± 9.67	$21.66 \pm 4.28^*$
500 μM MPTP	26.63 ± 4.51	$18.39 \pm 2.54^*$
100 μM Dopamine	36.65 ± 7.91	$15.47 \pm 3.91^*$

Supplementary Figure 1. Kinetic analysis of the inhibitory effects of MPP⁺, MPTP and dopamine on the chymotrypsin-like activity of the 20S proteasome. Purified 20S proteasome (0.05 μg) was incubated in the absence (control, \blacklozenge) or presence of 500 μM MPP⁺ (\blacksquare), 500 μM MPTP (\blacktriangle) or 100 μM dopamine (\circ) for 10 min, prior to measuring CLA for up to 2 hours. Shown are: (a) typical Michaelis-Menten kinetics; data are mean values for triplicate assays, (b) Lineweaver-Burke plot for data in (a) (c) V_{max} and K_m values. Data are the mean values of four experiments performed in triplicate and analysed by the Student's t test comparing toxin treated values for V_{max} and K_m with corresponding control values.