

## RESEARCH ARTICLE

## Evaluating the relationship between circulating lipoprotein lipids and apolipoproteins with risk of coronary heart disease: A multivariable Mendelian randomisation analysis

Tom G. Richardson<sup>1,2\*</sup>, Eleanor Sanderson<sup>1,2</sup>, Tom M. Palmer<sup>1,2</sup>, Mika Ala-Korpela<sup>3,4,5,6</sup>, Brian A. Ference<sup>7,8</sup>, George Davey Smith<sup>1,2‡</sup>, Michael V. Holmes<sup>1,9,10‡</sup>

**1** Medical Research Council Integrative Epidemiology Unit, University of Bristol, Bristol, United Kingdom, **2** Population Health Sciences, Bristol Medical School, University of Bristol, Barley House, Oakfield Grove, Bristol, United Kingdom, **3** Systems Epidemiology, Baker Heart and Diabetes Institute, Melbourne, Australia, **4** Computational Medicine, Faculty of Medicine, University of Oulu and Biocenter Oulu, Oulu, Finland, **5** NMR Metabolomics Laboratory, School of Pharmacy, University of Eastern Finland, Kuopio, Finland, **6** Department of Epidemiology and Preventive Medicine, School of Public Health and Preventive Medicine, Faculty of Medicine, Nursing and Health Sciences, The Alfred Hospital, Monash University, Melbourne, Australia, **7** Centre for Naturally Randomized Trials, University of Cambridge, Cambridge, United Kingdom, **8** MRC/BHF Cardiovascular Epidemiology Unit, Department of Public Health and Primary Care, University of Cambridge, Cambridge, United Kingdom, **9** Medical Research Council Population Health Research Unit, University of Oxford, Oxford, United Kingdom, **10** Clinical Trial Service Unit & Epidemiological Studies Unit, Nuffield Department of Population Health, University of Oxford, Oxford, United Kingdom

‡ These authors are joint senior authors on this work.

\* [tom.g.richardson@bristol.ac.uk](mailto:tom.g.richardson@bristol.ac.uk) (TGR); [pa-ieudirector@bristol.ac.uk](mailto:pa-ieudirector@bristol.ac.uk) (GDS)

## OPEN ACCESS

**Citation:** Richardson TG, Sanderson E, Palmer TM, Ala-Korpela M, Ference BA, Davey Smith G, et al. (2020) Evaluating the relationship between circulating lipoprotein lipids and apolipoproteins with risk of coronary heart disease: A multivariable Mendelian randomisation analysis. *PLoS Med* 17 (3): e1003062. <https://doi.org/10.1371/journal.pmed.1003062>

**Academic Editor:** Daniel J. Rader, University of Pennsylvania, UNITED STATES

**Received:** August 15, 2019

**Accepted:** February 21, 2020

**Published:** March 23, 2020

**Copyright:** © 2020 Richardson et al. This is an open access article distributed under the terms of the [Creative Commons Attribution License](https://creativecommons.org/licenses/by/4.0/), which permits unrestricted use, distribution, and reproduction in any medium, provided the original author and source are credited.

**Data Availability Statement:** The data underlying the results presented in the study are available from the UK Biobank (<http://biobank.ndph.ox.ac.uk/showcase/>). Derived data supporting the findings of this study are available as a Supporting information file.

**Funding:** TGR, ES, and GDS work in the Medical Research Council Integrative Epidemiology Unit at the University of Bristol, which is supported by the

## Abstract

## Background

Circulating lipoprotein lipids cause coronary heart disease (CHD). However, the precise way in which one or more lipoprotein lipid-related entities account for this relationship remains unclear. Using genetic instruments for lipoprotein lipid traits implemented through multivariable Mendelian randomisation (MR), we sought to compare their causal roles in the aetiology of CHD.

## Methods and findings

We conducted a genome-wide association study (GWAS) of circulating non-fasted lipoprotein lipid traits in the UK Biobank (UKBB) for low-density lipoprotein (LDL) cholesterol, triglycerides, and apolipoprotein B to identify lipid-associated single nucleotide polymorphisms (SNPs). Using data from CARDIoGRAMplusC4D for CHD (consisting of 60,801 cases and 123,504 controls), we performed univariable and multivariable MR analyses. Similar GWAS and MR analyses were conducted for high-density lipoprotein (HDL) cholesterol and apolipoprotein A-I. The GWAS of lipids and apolipoproteins in the UKBB included between 393,193 and 441,016 individuals in whom the mean age was 56.9 y (range 39–73

Medical Research Council (MC\_UU\_00011/1 and MC\_UU-00011/2). TGR is a UKRI Innovation Research Fellow (MR/S003886/1). MAK is supported by a Senior Research Fellowship from the National Health and Medical Research Council (NHMRC) of Australia (APP1158958) and a research grant from the Sigrid Juselius Foundation, Finland. BAF is supported by the National Institute for Health Research (NIHR) Cambridge Biomedical Research Centre at the Cambridge University Hospitals NHS Foundation Trust. MVH works in a unit that receives funding from the UK Medical Research Council and is supported by a British Heart Foundation Intermediate Clinical Research Fellowship (FS/18/23/33512) and the National Institute for Health Research Oxford Biomedical Research Centre. The funders had no role in study design, data collection and analysis, decision to publish, or preparation of the manuscript.

**Competing interests:** I have read the journal's policy and the authors of this manuscript have the following competing interests: BAF reports receiving grants from Amgen, Merck & Co., Novartis, and Esperion Therapeutics; consulting or advisory board fees from Amgen, Regeneron, Sanofi, Merck & Co., Pfizer, Civi BioPharma, and KrKA Pharmaceuticals; and grants from Merck & Co., Amgen, Novartis, Novo Nordisk, Regeneron, Sanofi, Pfizer, Eli Lilly, Mylan, Ionis, dalCOR, Silence Therapeutics, Integral Therapeutics, Civi Pharma, KrKa Pharmaceuticals, American College of Cardiology, European Atherosclerosis Society, and European Society of Cardiology. MVH has collaborated with Boehringer Ingelheim in research, and in accordance with the policy of the The Clinical Trial Service Unit and Epidemiological Studies Unit (University of Oxford), did not accept any personal payment. GDS is an Academic Editor on PLOS Medicine's editorial board. All other authors report no potential conflicts of interest.

**Abbreviations:** ACC, American College of Cardiology; AHA, American Heart Association; ANGPTL3/4, angiopoietin-like proteins 3 and 4; CHD, coronary heart disease; CVD, cardiovascular disease; EAS, European Atherosclerosis Society; ESC, European Society of Cardiology; GWAS, genome-wide association study; HDL, high-density lipoprotein; LMM, linear mixed model; MR, Mendelian randomisation; OR, odds ratio; SNP, single nucleotide polymorphism; UKBB, UK Biobank; VLDL, very low-density lipoprotein.

y) and of whom 54.2% were women. The mean (standard deviation) lipid concentrations were LDL cholesterol 3.57 (0.87) mmol/L and HDL cholesterol 1.45 (0.38) mmol/L, and the median triglycerides was 1.50 (IQR = 1.11) mmol/L. The mean (standard deviation) values for apolipoproteins B and A-I were 1.03 (0.24) g/L and 1.54 (0.27) g/L, respectively. The GWAS identified multiple independent SNPs associated at  $P < 5 \times 10^{-8}$  for LDL cholesterol (220), apolipoprotein B ( $n = 255$ ), triglycerides (440), HDL cholesterol (534), and apolipoprotein A-I (440). Between 56%–93% of SNPs identified for each lipid trait had not been previously reported in large-scale GWASs. Almost half (46%) of these SNPs were associated at  $P < 5 \times 10^{-8}$  with more than one lipid-related trait. Assessed individually using MR, LDL cholesterol (odds ratio [OR] 1.66 per 1-standard-deviation-higher trait; 95% CI: 1.49–1.86;  $P < 0.001$ ), triglycerides (OR 1.34; 95% CI: 1.25–1.44;  $P < 0.001$ ) and apolipoprotein B (OR 1.73; 95% CI: 1.56–1.91;  $P < 0.001$ ) had effect estimates consistent with a higher risk of CHD. In multivariable MR, only apolipoprotein B (OR 1.92; 95% CI: 1.31–2.81;  $P < 0.001$ ) retained a robust effect, with the estimate for LDL cholesterol (OR 0.85; 95% CI: 0.57–1.27;  $P = 0.44$ ) reversing and that of triglycerides (OR 1.12; 95% CI: 1.02–1.23;  $P = 0.01$ ) becoming weaker. Individual MR analyses showed a 1-standard-deviation-higher HDL cholesterol (OR 0.80; 95% CI: 0.75–0.86;  $P < 0.001$ ) and apolipoprotein A-I (OR 0.83; 95% CI: 0.77–0.89;  $P < 0.001$ ) to lower the risk of CHD, but these effect estimates attenuated substantially to the null on accounting for apolipoprotein B. A limitation is that, owing to the nature of lipoprotein metabolism, measures related to the composition of lipoprotein particles are highly correlated, creating a challenge in making exclusive interpretations on causation of individual components.

## Conclusions

These findings suggest that apolipoprotein B is the predominant trait that accounts for the aetiological relationship of lipoprotein lipids with risk of CHD.

## Author summary

### Why was this study done?

- There is uncertainty regarding which lipid or apolipoprotein trait is the predominant atherogenic agent involved in the aetiology of lipids and coronary heart disease (CHD).
- The elucidation of such is important because not only does it clarify the aetiological understanding of the pathogenesis of CHD, it also hones the focus on the lipid- or apolipoprotein-related trait that should be the focus when developing lipid-modifying interventions.

### What did the researchers do and find?

- We used data on up to 441,016 participants from the UK Biobank to conduct genome-wide association analyses to find genetic variants reliably associated with lipoprotein lipid and apolipoprotein concentrations: this led to the identification of multiple independent genetic variants, each associated very robustly (at  $P < 5 \times 10^{-8}$ ) with LDL

cholesterol (220 genetic variants), apolipoprotein B (255 genetic variants), triglycerides (440 genetic variants), HDL cholesterol (534 genetic variants), and apolipoprotein A-I (440 genetic variants). Hundreds of these variants identified were novel, to our knowledge.

- When we explored the potential causal role of these lipids and apolipoproteins in isolation using Mendelian randomisation, we found evidence compatible with LDL cholesterol, triglycerides, and apolipoprotein B increasing the risk of CHD and HDL cholesterol and apolipoproteins A-I lowering CHD risk.
- When we examined these lipids and apolipoproteins together in multivariable Mendelian randomisation, we found that only apolipoprotein B retained a robust relationship with the risk of CHD—the effect estimates for all other entities were either substantially attenuated to the null or reversed in direction.

### What do these findings mean?

- The analytical approach in this study implemented through multivariable Mendelian randomisation simultaneously accounts for genetic associations with lipids and apolipoproteins and should therefore provide more reliable insights into what is the underlying driver of CHD.
- These findings support that, amongst the repertoire of lipoprotein lipids and apolipoproteins that we investigated, apolipoprotein B has a fundamental role in the aetiology of CHD.

## Introduction

There is incontrovertible evidence that lipids play a causal role in the aetiology of coronary heart disease (CHD) [1–3]. Multiple large-scale randomised trials of lipid-modifying therapies have conclusively shown that lowering of cholesterol in atherogenic lipoproteins leads to a reduction in risk of CHD [4,5]. These findings have been recapitulated in human genetic studies using genetic variants robustly associated with low-density lipoprotein (LDL) cholesterol [6–9].

Each circulating atherogenic lipoprotein particle includes one apolipoprotein B molecule, but the amount of cholesterol (especially in LDL particles) and the amount of triglycerides (especially in very low-density lipoprotein [VLDL] particles) can vary extensively between lipoprotein particles [10–12]. Thus, whilst the concentration of LDL cholesterol and triglycerides quantifies the concentration of these lipid substances carried in circulating lipoproteins, they do not precisely quantify the number of atherogenic lipoproteins; in contrast, the concentration of apolipoprotein B molecules is directly proportional to the number of circulating atherogenic particles in the blood [11,12]. Evidence from human genetics supports a causal role of LDL cholesterol, triglycerides, and apolipoprotein B in CHD [13–16]. Whilst it is plausible that each lipid-related entity does individually play a causal role, it is also feasible that one trait predominates and ultimately accounts for the relationship of lipoprotein particle entities. Elucidating the comparative role of lipoprotein lipids in the aetiology of CHD has important repercussions not only in terms of a clearer understanding of the underlying pathophysiology but also in terms of which biomarker(s) should be the focus of lipid-modifying therapeutics,

could provide the best surrogate endpoint for honing down to the most effective agents to enter into event trials, and might have more application in the clinical setting.

Disentangling the relationships of atherogenic lipoprotein lipids and risk of CHD is nontrivial, given the correlated nature of these traits [17,18]. From the perspective of which trait has the strongest association with cardiovascular risk, meta-analyses have identified that apolipoprotein B has a comparatively higher relative risk than that derived from LDL cholesterol [19]. The inclusion of apolipoprotein-B-related measures leads to modest incremental increases in predictive performance [20]. Pooled data from over 500,000 individuals across 44 cohorts identified non-high-density lipoprotein (non-HDL) cholesterol (an approximation to the number of apolipoprotein-B-containing particles) to strongly associate with risk of incident cardiovascular disease [21]. When the concentrations of apolipoprotein B and LDL cholesterol are discordant in individuals, apolipoprotein B has a stronger association with risk of cardiovascular disease (CVD) than LDL cholesterol [22]. This is of clinical relevance given that it is estimated that more than one-quarter of the general population has meaningful discordant apolipoprotein B and LDL cholesterol values, with greater evidence of such discordance in individuals with metabolic risk factors such as obesity or type 2 diabetes [23]. Notably, the 2018 American College of Cardiology/American Heart Association (ACC/AHA) guidelines from the US [24] do not recommend routine measurement of apolipoprotein B in risk prediction, whereas the 2019 European guidelines from the European Society of Cardiology/European Atherosclerosis Society (ESC/EAS) [25] do recommend that all persons should have apolipoprotein B measured, if available.

In genetic analyses, a similar ‘discordance’ analytical approach can help to elucidate the comparative causal roles of lipid-related traits on CHD through the selection of genetic variants that associate with more than one trait. This can help identify which of the traits has a predominant influence on risk of CHD. Such studies have identified that, when genetic associations with LDL cholesterol or triglycerides are discordant with their association with apolipoprotein B, it is apolipoprotein B that retains the most robust relationship. [15,26] Another approach is to use Mendelian randomisation (MR), a genetic approach that can facilitate an assessment of causality under certain assumptions. [27] Conventionally, MR involves the analysis of individual exposure to outcome relationships. A recently developed extension to MR, so-called multivariable MR, permits the appraisal of multiple risk factors simultaneously. By including the genetic associations for multiple exposures in the same model, multivariable MR can elucidate which traits retain a causal relationship with an outcome of interest through the genetic protection against conventional confounders including reverse causation, the inherent correction for measurement error, and the avoidance of collider bias [28].

In this study, we sought to use human genetics to disentangle which one or more of the atherogenic lipid-related traits (apolipoprotein B, LDL cholesterol, and triglycerides) predominantly accounts for the causal relationship with risk of CHD. We first conducted a de novo genome-wide association study (GWAS) of lipid-related traits using the UK Biobank (UKBB) to identify variants robustly associated with each trait. We then conducted MR analyses, including multivariable MR, to elucidate which of the atherogenic lipid traits is of fundamental relevance to CHD. Finally, we investigated whether the entity underlying the causal role of atherogenic lipid-related traits in CHD also accounted for the inverse association of HDL-related phenotypes with CHD.

## Methods

### Data sources

We used data from the UK Biobank (UKBB) under application #15825 and summary estimates from CARDIoGRAMplusC4D [29]. Details on the UKBB, including geographical regions,

recruitment processes, and other characteristics, have been previously described [30]. All individual participant data used in this study were obtained from the UKBB study, who have obtained ethics approval from the Research Ethics Committee (REC; approval number: 11/NW/0382) and informed consent from all participants enrolled in UKBB.

### Lipid traits and data handling

We explored the following traits measured in the UKBB: LDL cholesterol, apolipoprotein B, triglycerides, HDL cholesterol, and apolipoprotein A-I. Details on sample handling and assays used have been previously described [31,32].

Lipid-related traits in the UKBB were standardised/normalised using inverse rank-normalisation such that the mean was 0 and standard deviation was 1, allowing comparison of effect estimates between traits.

### GWAS of lipid-related traits in UKBB

GWAS analyses were conducted in UKBB participants of European descent based on K-means clustering ( $K = 4$ ) after standard exclusions including withdrawn consent, mismatch between genetic and reported sex, and putative sex chromosome aneuploidy [33]. We identified single nucleotide polymorphisms (SNPs) associated with each of the lipid-related traits using the BOLT-LMM (linear mixed model) software [34]. Analyses were adjusted for age, sex, and a binary variable denoting the genotyping chip individuals were allocated to in UKBB (the UKBB Axiom array or the UK BiLEVE array). BOLT-LMM employs an LMM to evaluate the association between genetic variants and phenotypic traits whilst accounting for population stratification and cryptic relatedness [34]. This approach has been shown to provide higher statistical power when applied to the approximately 459,000 European samples in the UKBB study compared to alternative approaches [35]. Further details on genotyping quality control, phasing, imputation, and association testing have been reported previously [36,37]. We assigned a SNP as associated with a lipid-related trait of interest through use of a conventional GWAS threshold ( $P < 5 \times 10^{-8}$ ), and SNPs were binned into loci based on pairwise linkage disequilibrium (LD; at between-SNP  $r^2 < 0.001$ ), with the SNP with the strongest association with the trait of interest (as defined by  $P$ -value) being retained in each locus. This process (conventionally referred to as 'LD clumping') was undertaken for each trait in turn using the software PLINK [38], based on a reference panel of 503 Europeans from phase 3 (version 5) of the 1,000 Genomes Project [39]. We defined novel SNPs as those associated with the trait of interest at  $P < 5 \times 10^{-8}$  in our analyses in which an association had not been previously reported at  $P < 5 \times 10^{-8}$ , within 1 MB and at  $r^2 < 0.001$ , by the Global Lipids Genetics Consortium [40] (for LDL cholesterol, triglycerides, and HDL cholesterol) or by Kettunen and colleagues [41] (for apolipoprotein B or apolipoprotein A-I).

### Synthesis and characterisation of genetic instruments

SNPs associating with lipid-related traits at conventional GWAS thresholds ( $P < 5 \times 10^{-8}$ ) were taken forward to generate genetic instruments for each phenotype. A genetic instrument consists of one or more genetic variants that has characteristics that enable its use as an instrumental variable in MR [27,42,43]. We characterised the genetic instruments in 2 ways. First, to characterise the 'specificity' of individual SNPs included in each genetic instrument, we elucidated how many SNPs associated with lipid or apolipoprotein traits other than the primary lipid trait of interest at conventional GWAS thresholds of significance ( $P < 5 \times 10^{-8}$ ) and used this information to generate a Venn diagram. Further LD clumping was undertaken to define the unique number of overlapping genetic loci between all 5 traits to be depicted in the Venn

diagram. Second, we characterise instrument ‘specificity’ (i.e., the degree to which genetic instruments for one lipid or apolipoprotein trait also associate with other traits) by taking per-allele SNP estimates from our GWAS for each lipid trait and conducting inverse variance weighted regressions on these summary estimates to elucidate the association of genetic instruments across the various lipid-related traits—these estimates are presented as standardised differences per 1-standard-deviation-higher genetically predicted trait. Whilst we recognise that this approach may be prone to inflation (leading to potentially biased estimates owing to the derivation of genetic instruments for lipids and apolipoprotein traits occurring in the same data set as that in which their associations are subsequently estimated with other traits), the primary motivation is to characterise the associations of lipid instruments with the lipid-related traits: we do not interpret these as formal instrumental variable estimates. We also estimated the correlations between the beta coefficients for the genetic instruments used in the multivariable analyses.

### Outcome definition in CARDIoGRAMplusC4D

Cases in CARDIoGRAMplusC4D were defined as myocardial infarction, acute coronary syndrome, chronic stable angina, or coronary stenosis >50% [29], which we collectively describe in this study as CHD.

### Genetic analyses to elucidate potential causality

We first conducted univariable MR analyses for each lipid-related trait. For this, we harmonised SNPs identified from our GWASs of lipoprotein lipid traits in the UKBB to those SNPs available in CARDIoGRAMplusC4D by either matching the SNP directly or by selecting proxy SNPs in high LD ( $r^2 > 0.8$ ). This led to a small drop in the number of SNPs being available for MR, with a median of 93% SNPs identified in GWASs available for MR (the numbers available for each trait are provided in Table 1). We used the inverse variance weighted approach, which, in brief, takes the form of a linear regression of the SNP–outcome association regressed on the SNP–exposure association weighted by the inverse of the square of the standard error of the SNP–outcome association, with the intercept constrained at the origin.

We next conducted multivariable MR, which is a statistical approach that allows for the association of SNPs with multiple phenotypes to be incorporated into the analysis, permitting an estimation of the direct effect of each phenotype on the outcome (i.e., an effect that is not mediated by any other factor in the model [28]); see S1 Fig for further details. In this manuscript, we use the term ‘adjusted’ in the context of multivariable MR to mean ‘direct’ effects, i.e., the effect of a lipid trait on CHD whilst accounting for either mediation or confounding by another trait included in the model. For the multivariable MR analyses, we fitted a model with apolipoprotein B, LDL cholesterol, and triglycerides to identify which one or more traits appeared to be responsible for the effect of ‘atherogenic’ lipid-related traits on risk of CHD. We then took the atherogenic trait(s) that retained an effect on CHD in the multivariable MR model forward and further adjusted for apolipoprotein A-I and HDL cholesterol to assess the potential causal roles of HDL-related phenotypes in the development of CHD. In the setting of multivariable MR, we included all GWAS-associated SNPs for all traits in the model. This meant that there were differing numbers of SNPs in the 2 multivariable models tested.

We characterised instrument strengths in both the univariable and multivariable MR settings as follows: for the univariable estimates, we generated the mean F-statistic, using the approximation described by Bowden and colleagues [44]. For the multivariable estimate, we generated the conditional F-statistic [28,45]. Further details are provided in S1 Text.

Table 1. Genetic variants identified for each trait in the UKBB.

Trait	Number with Trait Measured in the UKBB with GWAS Genotyping	Mean Value (Standard Deviation)	Number of SNPs Identified in GWAS ( $P < 5 \times 10^{-8}$ )	Number (%) of Novel* SNPs	Number (%) of SNPs Aligned to CARDIoGRAM-plusC4D	F-statistic (Overall, Conditional)
LDL cholesterol (mmol/L)	440,546	3.57 (0.87)	220	123 (56%)	209 (95%)	164, 34
Triglycerides (mmol/L)	441,016	1.50 (1.11) <sup>§</sup>	440	339 (77%)	409 (93%)	116, 78
Apolipoprotein B (g/L)	439,214	1.03 (0.24)	255	203 (80%)	234 (92%)	153, 36 <sup>^</sup>
HDL cholesterol (mmol/L)	403,943	1.45 (0.38)	534	383 (72%)	490 (92%)	124, 67
Apolipoprotein A-I (g/L)	393,193	1.54 (0.27)	440	407 (93%)	407 (93%)	120, 62

\*We defined novel SNPs as those associated with the trait of interest at  $P < 5 \times 10^{-8}$  in which an association had not been previously reported at  $P < 5 \times 10^{-8}$ , within 1 MB and at  $r^2 < 0.001$  by the Global Lipids Genetics Consortium [40] (for LDL cholesterol, triglycerides and HDL cholesterol) or by Kettunen and colleagues [41] (for apolipoprotein B or apolipoprotein A-I).

<sup>§</sup>Median (IQR) presented for triglycerides, owing to the non-Gaussian distribution.

<sup>^</sup>The conditional F-statistic for apolipoprotein B when included in the multivariable MR model with LDL cholesterol and triglycerides was 36, and in the multivariable MR model that included HDL cholesterol and apolipoprotein A-I, it was 66.

**Abbreviations:** GWAS, genome-wide association study; HDL, high-density lipoprotein; IQR, interquartile range; LDL, low-density lipoprotein; MR, Mendelian randomisation; SNP, single nucleotide polymorphism; UKBB, UK Biobank.

<https://doi.org/10.1371/journal.pmed.1003062.t001>

## Software

The BOLT-LMM software was used to undertake GWAS [34]. This does not require the use of principal components in GWAS to account for population structure because this is taken into account using an LMM as performed by the software [35]. MR analyses were conducted using the ‘TwoSampleMR’ R package [46]. Manhattan and forest plots were generated using the ‘ggplot2’ and ‘metafor’ packages, respectively [47,48]. The Venn diagram was generated using the online tool available at <http://bioinformatics.psb.ugent.be/webtools/Venn> (accessed 13th August 2019).

## Interpretation of findings

Whilst we desisted from dichotomising results of analyses purely on the basis of a *P*-value into being ‘significant’ or not [49,50], as a means of grading the strength of evidence against the null hypothesis, in both the univariable and multivariable MR analyses, we used a two-sided alpha of 0.01 on the basis of testing 5 lipid-related traits. Such a Bonferroni adjustment to account for multiple testing can be considered overly conservative, given the high correlation between the lipid-related traits.

## Sensitivity analyses

In sensitivity analyses, we conducted univariable MR analyses robust to some forms of potential unbalanced horizontal pleiotropy [51] (horizontal pleiotropy being the process by which genetic variants used to instrument an exposure also associate with other traits that influence the outcome, a form of violation of the exclusion restriction assumption of instrumental variable analyses [52]) using weighted median [53], weighted mode [54], and MR-Egger [55] approaches. To further account for potential unbalanced horizontal pleiotropy in the multivariable MR analysis, we also conducted multivariable MR-Egger analyses [56,57]. To identify

whether multivariable MR estimates derived from our de novo GWAS are comparable to those previously published [13] using prior GWAS consortia data for lipoprotein lipids [40], we repeated the analyses excluding apolipoprotein B from the models. Finally, we adjusted for fasting time in the derivation of the genetic instruments (by including fasting hours as a covariate in the GWAS). This is because fasting status might impact the lipid or lipoprotein concentrations [58], with a potential effect on the SNP–lipid trait associations, thus potentially influencing the MR estimates.

## Protocol

Our study did not have a prospective protocol or analysis plan. Analyses were discussed in June 2019 as described above (i.e., to conduct a GWAS of lipids and apolipoproteins and then to test their causal relevance in multivariable MR). There were no data-driven changes to analyses. Following peer review, we (i) repeated the GWAS of lipids and apolipoproteins with adjustment for fasting status and repeated MR analyses using genetic instruments from such GWAS; (ii) repeated multivariable MR including LDL cholesterol or triglycerides (rather than apolipoprotein B) to demonstrate a residual effect of HDL cholesterol, in keeping with published literature; (iii) added multivariable MR-Egger as a sensitivity analysis [56]; and (iv) added phenotypic and genetic correlations between the lipid and apolipoprotein traits. We completed the STROBE checklist ([S1 STROBE Checklist](#)).

## Results

### UKBB data set

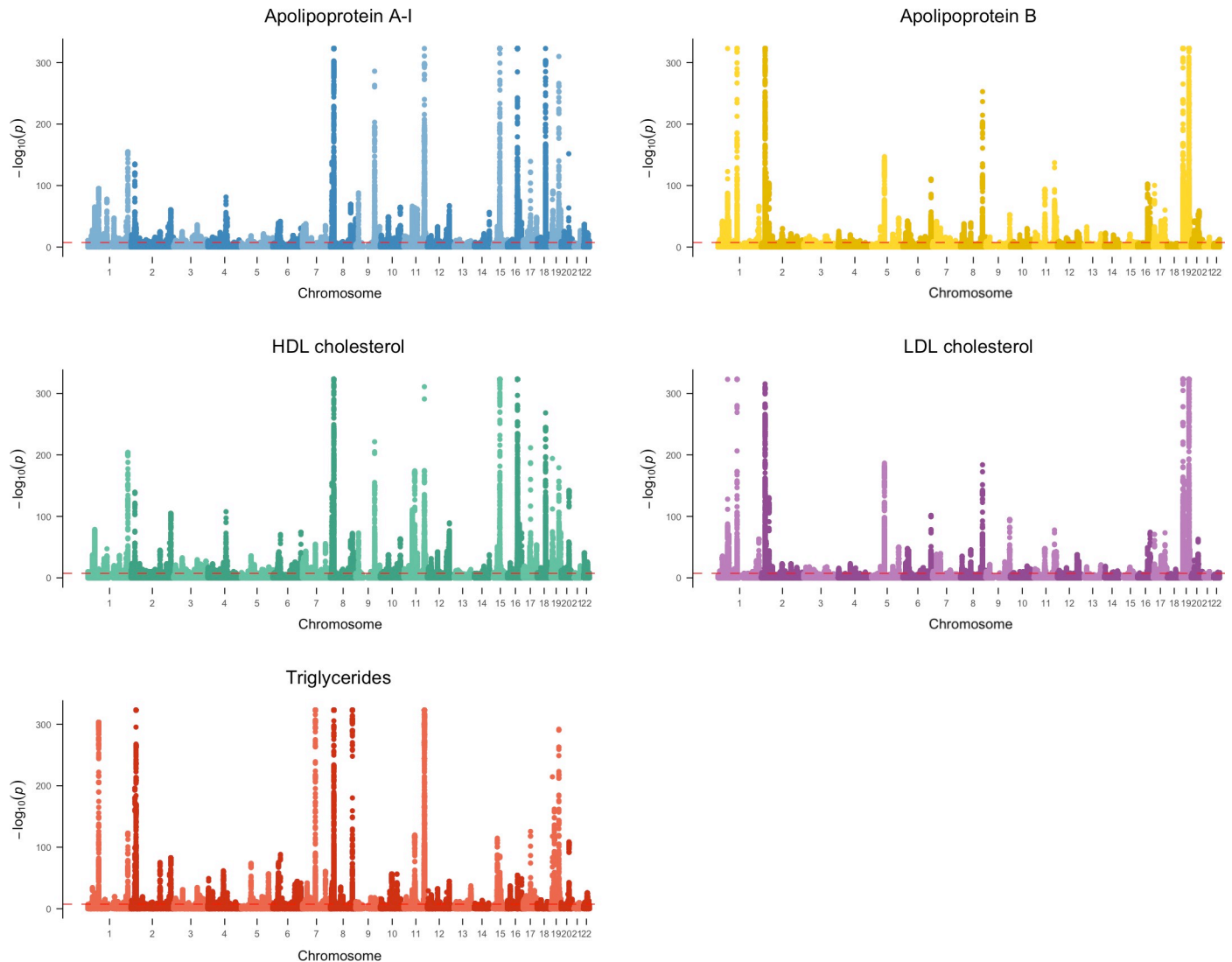
The lipid and apolipoprotein traits were measured in 393,193 to 441,016 individuals in the UKBB that have GWAS genotyping ([Table 1](#)). The mean age of study participants was 56.9 y (range 39–73 y), and 54.2% were women. The mean (standard deviation) lipid concentrations were LDL cholesterol 3.57 (0.87) mmol/L and HDL cholesterol 1.45 (0.38) mmol/L, and the median triglycerides was 1.50 (IQR = 1.11) mmol/L. The values for apolipoproteins B and A-I were 1.03 (0.24) g/L and 1.54 (0.27) g/L, respectively. Phenotypic correlations between the traits varied from Pearson's R  $-0.49$  (between HDL cholesterol and triglycerides) and  $0.96$  (between LDL cholesterol and apolipoprotein B) ([S1 Table](#)).

### GWAS of lipoprotein lipid and apolipoprotein traits

In the GWAS, we identified a large number of independent SNPs associated at  $P < 5 \times 10^{-8}$  with each lipid-related trait: 220 SNPs (of which 56% had not been previously reported) associated with LDL cholesterol, 440 (77% novel) for triglycerides, 255 (80% novel) for apolipoprotein B, 534 (72% novel) for HDL cholesterol, and 440 (93% novel) for apolipoprotein A-I ([Fig 1](#) and [Table 1](#)). Full details of the SNPs associated with the lipid-related traits are provided in [S2–S6 Tables](#).

A considerable number (352 out of a total 846 clumped SNPs, i.e., 41.6%) of SNPs used in each of the lipid-related genetic instruments showed associations at conventional GWAS significance ( $P < 5 \times 10^{-8}$ ) with other lipid traits ([Fig 2A](#)). On exploring the relationships of the genetic instruments with each lipid-related trait, we identified widespread associations ([Fig 2B](#)). For example, in addition to its association with apolipoprotein B, the genetic instrument for apolipoprotein B showed strong positive associations with LDL cholesterol and triglycerides and inverse associations with HDL cholesterol and apolipoprotein A-I. Correlations between all genetic variants used as instruments ranged between Pearson's R of  $-0.57$  (between HDL cholesterol and triglycerides) and  $0.97$  (between LDL cholesterol and apolipoprotein B) ([S7 Table](#)).





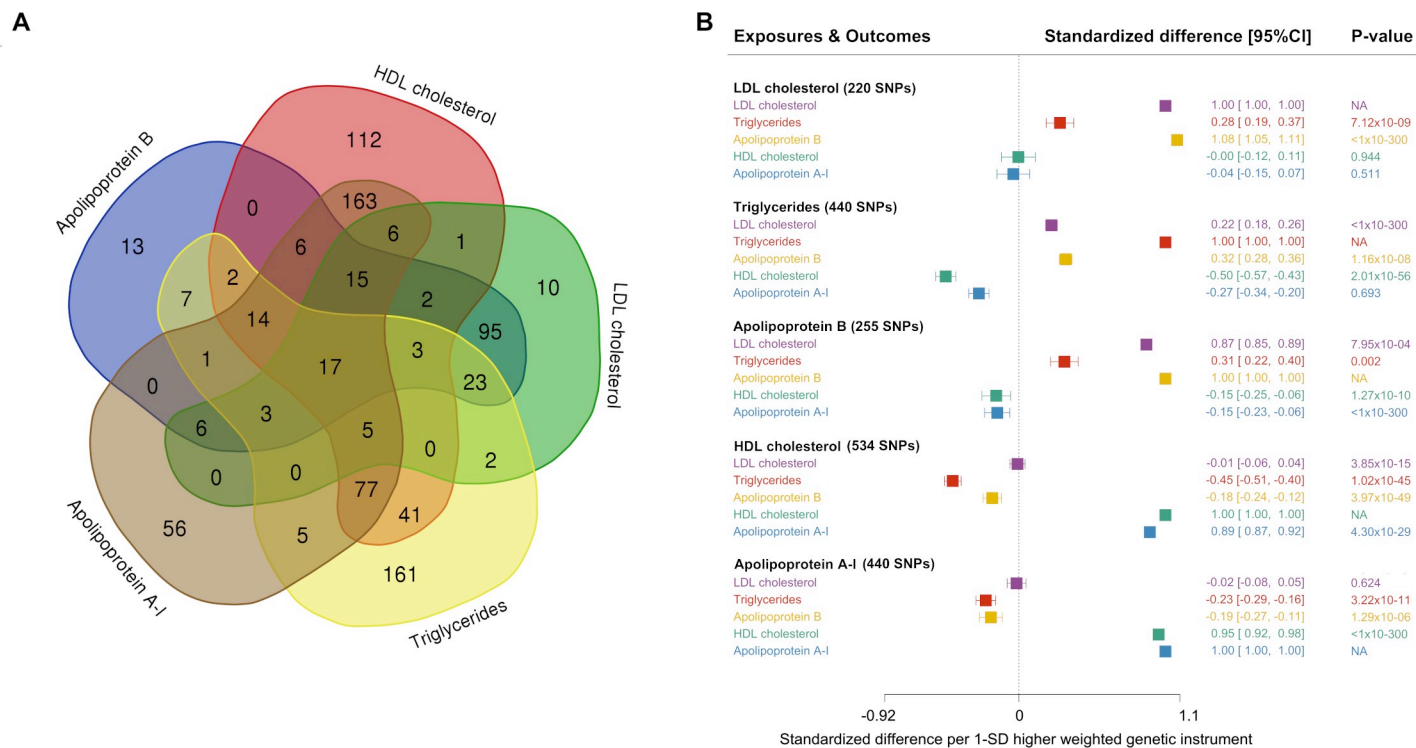
**Fig 1. Manhattan plots showing findings from the GWAS of lipoprotein lipid-related traits in the UKBB.** Horizontal dotted line illustrates the Y-axis value conventionally used to denote a SNP that reaches statistical significance in the GWAS, i.e., at  $P < 5 \times 10^{-8}$ . GWAS, genome-wide association study; HDL, high-density lipoprotein; LDL, low-density lipoprotein; SNP, single nucleotide polymorphism; UKBB, UK Biobank.

<https://doi.org/10.1371/journal.pmed.1003062.g001>

### Appraisal of LDL cholesterol, triglycerides, and apolipoprotein B

On individual assessment through conventional MR, we identified LDL cholesterol, triglycerides, and apolipoprotein B to have effect estimates consistent with a higher risk of CHD, using data from CARDIoGRAMplusC4D (with up to 60,801 cases) (Fig 3A). A 1-standard-deviation-higher LDL cholesterol had an odds ratio (OR) of 1.66 (95% CI: 1.49–1.86;  $P < 0.001$ ) for CHD, with the corresponding value for triglycerides being OR 1.34, 95% CI: 1.25–1.44, and  $P < 0.001$  and those for apolipoprotein B being OR 1.73, 95% CI: 1.56–1.91, and  $P < 0.001$ . Sensitivity analyses using methodological approaches that take into account potential genetic pleiotropy led to no substantive change in these estimates (S2 Fig).

When LDL cholesterol, triglycerides, and apolipoprotein B were assessed together in multivariable MR, only apolipoprotein B (OR 1.92; 95% CI: 1.31–2.81;  $P < 0.001$ ) retained a robust, potentially causal relationship with CHD (Fig 3A). The point estimate for LDL cholesterol



**Fig 2. Characteristics of genetic instruments developed for lipoprotein lipid-related traits.** (A) Overlap of SNPs and (B) associations with lipids and apolipoproteins. In Panel A, SNPs are grouped according to whether they associate with only the primary lipid-related trait of interest or whether they associate with other traits, based on  $P < 5 \times 10^{-8}$ . Panel B displays the associations of genetic instruments with lipid-related traits using the inverse variance weighting approach. Whilst we note the potential for overfitting of estimates displayed in Panel B, we present these data for illustrative purposes; the MR estimates presented in Fig 3 use a two-sample approach (with no overlapping data). CI, confidence interval; HDL, high-density lipoprotein; LDL, low-density lipoprotein; MR, Mendelian randomisation; NA, not applicable; SD, standard deviation; SNP, single nucleotide polymorphism.

<https://doi.org/10.1371/journal.pmed.1003062.g002>

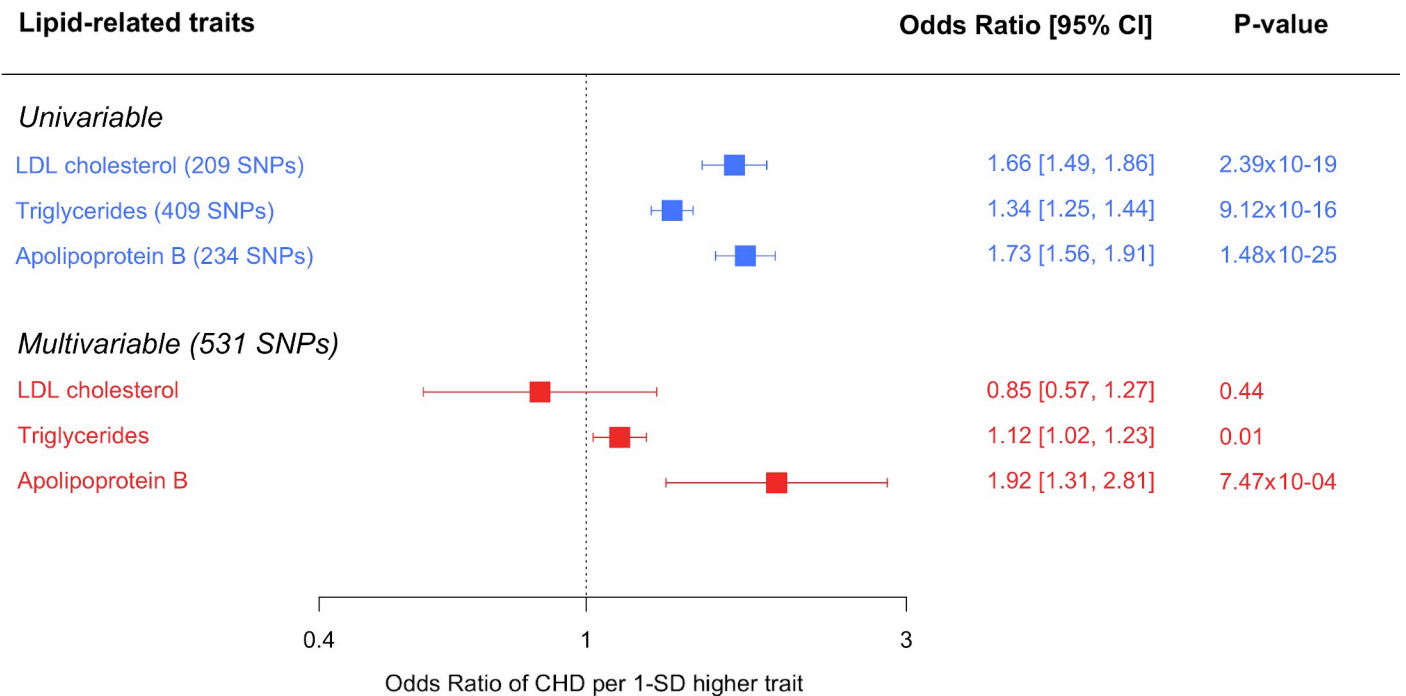
reversed on mutual adjustment to yield an adjusted OR of 0.85 (95% CI: 0.57–1.27;  $P = 0.44$ ). The estimate for triglycerides was weakened substantially (adjusted OR 1.12; 95% CI: 1.02–1.23;  $P = 0.01$ ).

### Appraisal of HDL cholesterol and apolipoprotein A-I

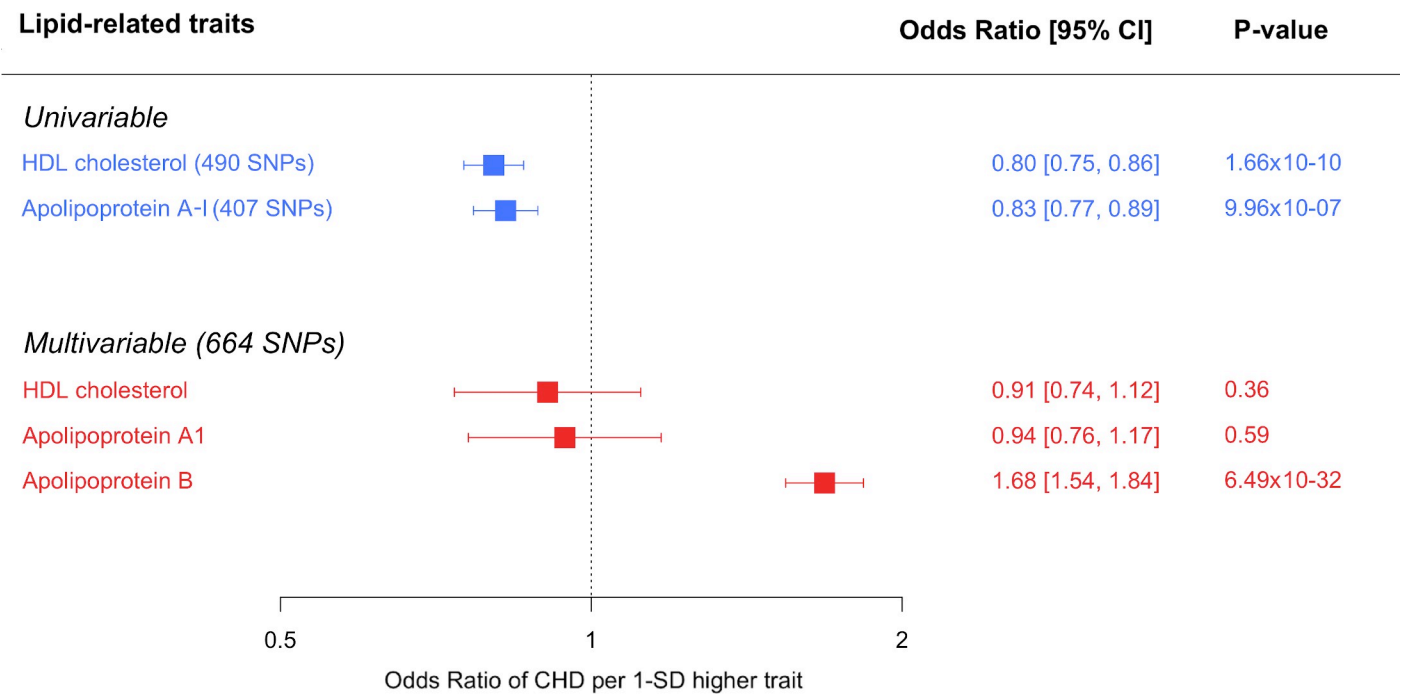
Individual analysis using conventional MR showed both HDL cholesterol and apolipoprotein A-I to have effect estimates consistent with a lower risk of CHD (Fig 3B). The estimate for a 1-standard-deviation-higher HDL cholesterol was OR 0.80 (95% CI: 0.75,–0.86;  $P < 0.001$ ), and for apolipoprotein A-I, it was OR 0.83 (95% CI: 0.77–0.89;  $P < 0.001$ ). The effect estimates for both HDL cholesterol and apolipoprotein A-I were diminished when using methodologies that are more robust to potential pleiotropy of the genetic variants used in the analysis (S2 Fig).

On appraisal in a multivariable MR analysis that included apolipoprotein B (which retained evidence of a potentially causal relationship with CHD on mutual genetic adjustment for LDL cholesterol and triglycerides), the effect estimates of both HDL cholesterol and apolipoprotein A-I diminished and were not distinguishable from the null (Fig 3B). The adjusted estimate for HDL cholesterol was OR 0.91 (95% CI: 0.74–1.12;  $P = 0.36$ ), and for apolipoprotein A-I, it was OR 0.94 (95% CI: 0.76–1.17;  $P = 0.59$ ). When adjusted for HDL cholesterol and apolipoprotein A-I, there was robust evidence for a potential causal role of apolipoprotein B in the development of CHD (adjusted OR 1.68; 95% CI: 1.54–1.84;  $P < 0.001$ ).

**A**



**B**



**Fig 3. Univariable and multivariable MR of so-called (A) atherogenic and (B) protective lipoprotein lipids and apolipoproteins and risk of CHD.** In both (A) and (B), univariable MR estimates were derived using the inverse variance weighted approach. For a more comprehensive repertoire of estimates derived from univariable MR approaches, please see [S2 Fig](#). CHD, coronary heart disease; CI, confidence interval; HDL, high-density lipoprotein; LDL, low-density lipoprotein; MR, Mendelian randomisation; SD, standard deviation; SNP, single nucleotide polymorphism.

<https://doi.org/10.1371/journal.pmed.1003062.g003>

The F-statistics for all lipid-related genetic instruments in both the univariable and multivariable MR settings were consistent with an absence of weak instrument bias (Table 1).

### Sensitivity analyses

Adjustment for fasting time in the GWAS of lipids and apolipoproteins led to negligible alterations in the effect estimates in both univariable and multivariable MR (S8 and S9 Tables). Use of multivariable MR-Egger led to very similar effect estimates as those derived from multivariable IVW MR (S10 and S11 Tables). Repeating the same multivariable MR models excluding apolipoprotein B led to findings similar to those identified in prior studies [13], i.e., that in multivariable MR analyses including LDL cholesterol and/or triglycerides, a weak residual inverse relationship of HDL cholesterol with CHD was seen (S12 and S13 Tables). Notably, such HDL cholesterol associations diminished to include the null on univariable MR approaches that are more robust to unbalanced horizontal pleiotropy (S2 Fig) and on multivariable MR that includes apolipoprotein B and multivariable MR-Egger (Fig 3, S10 and S11 Tables).

### Discussion

In this study, we explored the causal relationships of lipids and apolipoproteins with risk of CHD by conducting a GWAS of lipoprotein lipid-related traits in approximately 440,000 UKBB participants and taking forward genetic instruments into multivariable MR using data from the CARDIoGRAMplusC4D consortium, including over 60,000 cases of CHD. Our principal findings are that after taking into account the effects of apolipoprotein B, the relationships of other lipid-related entities with risk of CHD attenuated markedly to the null. In contrast, the relationship of apolipoprotein B with risk of CHD was robust to adjustment for other traits. Our study therefore provides empirical evidence from human genetics that apolipoprotein B is the necessary element in order for lipoprotein lipids to exert their causal effect on risk of CHD—in other words, apolipoprotein B is a critical entity that underlies the relationship of lipid traits and risk of CHD. This adds further evidence to support the hypothesis that it is the number of atherogenic lipoprotein particles indexed by apolipoprotein B rather than the amount of circulating cholesterol or triglycerides per se that is the important driver of CHD [26]. In other words, changes in cholesterol or triglycerides that are not accompanied by commensurate changes in apolipoprotein B may not lead to altered risks of CHD.

Our GWAS identified many hundreds of variants associated with the major lipid-related traits, with most SNPs identified being novel, to our knowledge. This is likely because our GWAS was not only larger in sample size than prior GWAS of lipoprotein lipid traits [40] but also used a single study. Previous GWASs [40] of lipids were conducted in multiple individual studies that were then meta-analysed, thus introducing a loss of power due to between-study heterogeneity. Many SNPs identified for one lipid-related trait also showed associations with other lipid traits, highlighting their pleiotropic nature and/or the high degree of inter-relatedness amongst plasma lipoproteins and their lipid constituents. Individual appraisal using univariable MR showed widespread effects of all lipid-related traits, with LDL cholesterol, triglycerides, and apolipoprotein B each having effect estimates consistent with a higher risk of CHD. These findings recapitulate those reported in previous studies [8,9,13,14], leading to the contemporary view that each atherogenic lipid trait might play a causal role in vascular disease. When we estimated the direct (i.e., adjusted) effect of these traits using multivariable MR (see S1 Fig for further details), only apolipoprotein B retained a robust effect with CHD, with the effect of LDL cholesterol being reversed and that for triglycerides being largely diminished, leaving only a weak residual effect. The apparent protective associations of HDL cholesterol

and apolipoprotein A-1, present on univariable MR analyses, were also markedly attenuated when direct effects conditional on apolipoprotein B were estimated. Taken together, these findings indicate that amongst the lipid-related traits we investigated, it is apolipoprotein B, and thus the number of atherogenic lipoprotein particles, that predominates as the underlying cause of CHD.

How do these findings enhance the evidence base relating to lipid traits and vascular disease? Large-scale observational [59], interventional [4,5], and genetic [6–9] studies support LDL cholesterol as being causal in the aetiology of CHD. In recent years, genetic studies have provided evidence in support of triglycerides [13,14] also playing a causal role. Both LDL cholesterol and triglycerides are carried in atherogenic lipoproteins, each containing an apolipoprotein B molecule. Recent reviews [11,12,60,61] point to apolipoprotein B potentially being the necessary entity for atherosclerosis to occur, for example, through the ‘response to retention’ hypothesis, in which apolipoprotein-B-containing particles become trapped in the tunica intima of the arterial wall [62]. Our study builds on recent findings [26] to provide further empirical evidence that supports this hypothesis, but our findings do not discredit the causal roles that LDL cholesterol or triglycerides play in vascular disease. This is because apolipoprotein B does not occur in physiological isolation [61], but rather is always accompanied by cholesterol and triglycerides. In light of this, our findings pinpoint that it is apolipoprotein B that is necessary for lipid-mediated atherogenesis to occur. Indeed, our findings from multivariable MR are consistent with apolipoprotein B being an essential element allowing the atherogenic effects of LDL cholesterol and triglyceride to be expressed.

How do these findings aid us in the context of developing drugs that modify lipoprotein lipid concentrations and predicting their effects on risk of CHD? Drug-target MR studies show that, for example, modifying triglycerides through therapies such as angiopoietin-like proteins 3 and 4 (ANGPLT3/4) inhibition may represent an emerging approach to lowering the risk of CHD [63–65]. Our findings do not run contrary to these conclusions; rather, they shed light on whether the concentrations of cholesterol and/or triglycerides that are carried by apolipoprotein-B-containing lipoproteins contribute to risk of CHD beyond that encoded by apolipoprotein B. Based on these and recent data [15,26], the primary focus of lipid-modifying therapies ought to be the reduction in number of atherogenic lipoproteins (as measured by apolipoprotein B) rather than the reduction in cholesterol or triglycerides. This is especially the case when drugs have discrepant effects across these lipid traits [10,15,66]. Thus, in predicting the cardiovascular efficacy of a lipid-modifying therapeutic, apolipoprotein B can, all things being equal, be used as a reliable surrogate marker for the expected relative risk reduction in CHD—assuming, of course, that the drug under investigation does not display adverse events that arise either from target-mediated mechanisms or from off-target effects (notably, both can be investigated in human genetics studies [67]). In other words, our findings bolster the potential use of total circulating concentrations of apolipoprotein B to quantify the risk of CHD across a broad range of apolipoprotein-B-containing lipoprotein particles [25].

We note that this interpretation is in keeping with 2 important prior investigations that examined the concordance of CHD associations between SNPs associated with apolipoprotein B, LDL cholesterol [15], and triglycerides [26]. Indeed, one of these prior investigations conducted a form of multivariable MR analysis and obtained similar findings to those we report in the present study [26]. Importantly, the analysis that we conducted and report herein builds on these prior investigations by conducting a *de novo* GWAS of lipoprotein lipids and apolipoproteins in a large number of individuals and thus expanding on the numbers of SNPs used as instruments for each lipid-related trait but also including the full repertoire of GWAS-associated SNPs for apolipoprotein B. The derivation of genetic instruments from the same data set in similar numbers of individuals should facilitate a fairer representation of the genetic

architecture of each of the traits included in the multivariable analyses. In addition to these methodological enhancements and replication of previous studies, our findings also demonstrate that therapies that seek to modify HDL or apolipoprotein A-I [68] will only have beneficial effects if they also lower apolipoprotein B. Their influence on apolipoprotein B is likely to account for any effects of therapies aimed at increasing HDL cholesterol or apolipoprotein A-I on the risk of CHD [66].

The findings that we make have been made available by 2 recent advances: first, the availability of large-scale lipoprotein lipid phenotyping and GWAS genotyping in the UKBB, providing sufficiently large numbers to permit identification of robust genetic variants (and therefore suitable genetic instruments) in order to conduct MR of each of the lipid-related traits. Use of a single study with similar numbers of individuals with measures available for each lipid-related trait enabled GWAS and the downstream synthesis of genetic instruments for each trait in which the genetic architecture of each phenotype ought to be similarly represented, allowing for a more rigorous comparative assessment of the traits in both the univariable and multivariable MR setting. Second, methodological developments in MR to include more than one trait (so-called multivariable MR) allows for direct effects (i.e., the effects of an exposure on disease, taking into account potential confounding and mediation by other traits) of multiple exposures to be assessed simultaneously and without the risk that this introduces forms of bias such as collider bias, in which, for example, conditioning on a potential mediator or a shared outcome can induce bias [28]. It is this methodological approach that allows the deduction that we make: that apolipoprotein B plays a critical role in the causal effects of lipid-related traits with risk of CHD. We note here an important theme that emerges: the discrepancy between our findings and those derived from other MR approaches that hitherto have been used in contemporary MR studies (reflected by the univariable MR estimates we present in [S2 Fig](#)). Approaches such as MR-Egger and weighted median MR can provide reliable evidence regarding causation even in the presence of confounding through unbalanced horizontal pleiotropy [69]. This is evidenced by the diminution of the HDL cholesterol association with risk of CHD from inverse variance weighted approaches to MR-Egger ([S2 Fig](#)). Importantly, such univariable MR approaches that are more robust to horizontal pleiotropy notably do not, with a few exceptions [56,70], allow simultaneous statistical adjustment for multiple traits. The repertoire of robust univariable MR approaches [51] that seek to act as sensitivity analyses for potential unbalanced horizontal pleiotropy each make a different series of assumptions [53]. In the situation when horizontal pleiotropy is present in a dose-response manner (i.e., on average, SNPs that associate with higher levels of the exposure of interest also associate with higher/lower degrees of horizontal pleiotropy), this violates the 'InSIDE' assumption [55], and the MR analyses yield biased estimates. This may be why the MR estimates for LDL cholesterol and triglycerides remain seemingly robust to MR-Egger and weighted median MR approaches. In this context, multivariable MR analysis can help when the traits included in the analysis account fully for the unbalanced, dose-related, horizontal pleiotropy. In the scenario that we investigate, apolipoprotein B may serve this role, and the multivariable MR results accounting for this support the conclusion that apolipoprotein B has a fundamental role in the atherogenic component of CHD risk.

Our study has interpretational challenges that may be conceived of as limitations. For example, a naïve interpretation of our findings would be that apolipoprotein B confounds the relationship of LDL cholesterol and triglycerides with risk of CHD, but this would be to neglect evidence gleaned over a century of scientific investigations into atherosclerosis [71]. In our interpretation, these findings from the multivariable MR, together with established physiological principles of lipoprotein structure and composition, are consistent with apolipoprotein B being a critical component in the entrapment of atherogenic lipoprotein particles in the tunica

intima in order to initiate and maintain lipid accumulation in the development of atherosclerosis [11,12,60]. Thus, our findings are in keeping with established understanding of the development of atherosclerosis [72] but pinpoint the crucial role of apolipoprotein B in the pathogenesis as a key molecule facilitating the entrapment of atherogenic lipoprotein particles in the intima. In other words, our multivariable MR does not suggest that apolipoprotein B confounds the LDL cholesterol or triglycerides relationship, but rather that apolipoprotein B is critical for the atherogenic effects of lipoprotein lipids. An additional limitation is that in relation to studies of lipoprotein metabolism, a fundamental challenge is that lipoprotein metabolism is a continuum in the circulation, particularly in relation to apolipoprotein-B-containing particles that are downstream metabolic constructs of VLDL particles secreted from the liver [73]. Thus, all measures related to the composition of these particles are highly correlated [74]. This creates an inherent difficulty in making exclusive interpretations on individual structural components. Finally, the Venn diagram in Fig 2A gives the impression that SNPs appear to cluster into discrete silos based on associations with lipids and apolipoproteins. However, this pictorial illustration is based on arbitrary thresholds of association, and it would be unwise to interpret SNPs in each silo of the Venn diagram to mean exclusivity of association. To illustrate this empirically, there are 13 SNPs that appear to solely associate with apolipoprotein B in Fig 2. As illustrated in S14 Table, these 13 SNPs also associate with LDL cholesterol (with the weakest LDL-cholesterol-associating SNP doing so at  $P < 0.001$ ), all in a directionally consistent way to their association with apolipoprotein B. Thus, whilst it may be tempting to generate instruments based on SNPs that fall into these visually discrete silos (in so-called ‘discordance analyses’), they are likely to be directionally pleiotropic. Indeed, given the physiological relationships of lipids and apolipoproteins, it could be argued that for a SNP to appear in the extremities of the Venn diagram (i.e., to be extremes in terms of their differential association with one lipid-related trait as compared to another), such a SNP would likely possess properties that lead to this situation through pleiotropy, rendering MR estimates derived from such a SNP more vulnerable to producing misleading findings. For these reasons, we consider the findings from our multivariable MR analyses to be more trustworthy than MR analyses based on subsetting SNPs on the basis of associations with traits at arbitrarily defined  $P$ -value thresholds.

In conclusion, our findings demonstrate that apolipoprotein B is of critical importance in facilitating the causal effects of lipoprotein lipid traits and risk of CHD.

## Supporting information

### S1 STROBE Checklist.

(PDF)

**S1 Fig. Multivariable MR: (A) conventional MR, (B) conventional MR confounded by pleiotropy, (C) multivariable MR.** (A) In conventional MR, in the absence of confounding of the genetic instrument and with exclusion restriction, a suitably powered analysis can lead to causal deductions. (B) In this example, SNPs used in the LDL cholesterol instrument also associate with apolipoprotein B (apoB), leading to potential confounding of the estimate of LDL cholesterol and risk of CHD. (C) In multivariable MR, genetic instruments for each of the traits under investigation are used together with the corresponding associations of SNPs with each trait in the analysis. The analysis yields a causal estimate for each trait taking into account the relationship of that trait and the genetic variants with the other traits in the analysis. These figures are schematic representations and should not be interpreted as formal directed acyclic graphs. apoB, apolipoprotein B; CHD, coronary heart disease; CI, confidence interval; HDL, high-density lipoprotein; LDL, low-density lipoprotein; MR, Mendelian randomisation; SNP,

single nucleotide polymorphism.  
(PDF)

**S2 Fig. Univariable MR estimates for individual lipid and apolipoprotein traits.** Effect estimates are ORs of CHD per 1-standard-deviation-higher genetically instrumented trait, using a range of univariable MR approaches (see [Methods for further details](#)). Plot generated using Stata SE 13.1 (StataCorp). CHD, coronary heart disease; CI, confidence interval; HDL, high-density lipoprotein; LDL, low-density lipoprotein; MR, Mendelian randomisation; nSNPs, number of single nucleotide polymorphisms; OR, odds ratio.  
(PDF)

**S1 Table. Phenotypic correlations between lipid-related traits in UKBB.** HDL, high-density lipoprotein; LDL, low-density lipoprotein; UKBB, UK Biobank.  
(XLSX)

**S2 Table. GWAS results for LDL cholesterol.** Beta, regression coefficient; BP, base position; CHR, chromosome; EAF, effect allele frequency; Gene, nearest gene; GWAS, genome-wide association study; INFO, imputation score; LDL, low-density lipoprotein; Novel signal?, association with  $P < 5 \times 10^{-8}$  not previously detected by the Global Lipids Genetics Consortium [40] based on  $<1$  mb and  $r^2 < 0.001$ ; P, *P*-value; SE, standard error of regression coefficient; SNP, single nucleotide polymorphism.  
(XLSX)

**S3 Table. GWAS results for triglycerides.** Beta, regression coefficient; BP, base position; CHR, chromosome; EAF, effect allele frequency; Gene, nearest gene; GWAS, genome-wide association study; INFO, imputation score; Novel signal?, association with  $P < 5 \times 10^{-8}$  not previously detected by the Global Lipids Genetics Consortium [40] based on  $<1$  mb and  $r^2 < 0.001$ ; P, *P*-value; SE, standard error of regression coefficient; SNP, single nucleotide polymorphism.  
(XLSX)

**S4 Table. GWAS results for apolipoprotein B.** Beta, regression coefficient; BP, base position; CHR, chromosome; EAF, effect allele frequency; Gene, nearest gene; GWAS, genome-wide association study; INFO, imputation score; Novel signal?, association with  $P < 5 \times 10^{-8}$  not previously detected by the Global Lipids Genetics Consortium [40] based on  $<1$  mb and  $r^2 < 0.001$ ; P, *P*-value; SE, standard error of regression coefficient; SNP, single nucleotide polymorphism.  
(XLSX)

**S5 Table. GWAS results for HDL cholesterol.** Beta, regression coefficient; BP, base position; CHR, chromosome; EAF, effect allele frequency; Gene, nearest gene; GWAS, genome-wide association study; HDL, high-density lipoprotein; INFO, imputation score; Novel signal?, association with  $P < 5 \times 10^{-8}$  not previously detected by the Global Lipids Genetics Consortium [40] based on  $<1$  mb and  $r^2 < 0.001$ ; P, *P*-value; SE, standard error of regression coefficient; SNP, single nucleotide polymorphism.  
(XLSX)

**S6 Table. GWAS results for apolipoprotein A-I.** Beta, regression coefficient; BP, base position; CHR, chromosome; EAF, effect allele frequency; Gene, nearest gene; GWAS, genome-wide association study; INFO, imputation score; LDL, low-density lipoprotein; Novel signal?, association with  $P < 5 \times 10^{-8}$  not previously detected by the Global Lipids Genetics Consortium [40] based on  $<1$  mb and  $r^2 < 0.001$ ; P, *P*-value; SE, standard error of regression



coefficient; SNP, single nucleotide polymorphism.  
(XLSX)

**S7 Table. Correlations between effect estimates of genetic instruments used in multivariable MR analyses.** HDL, high-density lipoprotein; LDL, low-density lipoprotein; MR, Mendelian randomisation.

(XLSX)

**S8 Table. Genetically determined effect estimates from univariable and multivariable MR analyses adjusted for fasting time (LDL, TG, and apolipoprotein B).** -Beta, effect estimate; LDL, low-density lipoprotein; MR, Mendelian randomisation; nSNP, number of single nucleotide polymorphisms; P, corresponding *P*-value; SE, standard error of the effect estimate; TG, triglycerides.

(XLSX)

**S9 Table. Genetically determined effect estimates from univariable and multivariable MR analyses adjusted for fasting time (HDL, apolipoprotein A-I, and apolipoprotein B).** Beta, effect estimate; HDL, high-density lipoprotein; MR, Mendelian randomisation; nSNPs, number of single nucleotide polymorphisms; P, corresponding *P*-value; SE, standard error of the effect estimate.

(XLSX)

**S10 Table. Genetically determined effect estimates from the multivariable MR analysis using the MR-Egger method for LDL, TG, and Apo B.** Beta, effect estimate; LDL, low-density lipoprotein; MR, Mendelian randomisation; nSNPs, number of single nucleotide polymorphisms; P, corresponding *P*-value; SE, standard error of the effect estimate; TG, triglycerides.

(XLSX)

**S11 Table. Genetically determined effect estimates from the multivariable MR analysis using the MR-Egger method for HDL, apolipoprotein A-I, and apolipoprotein B.** Beta, effect estimate; HDL, high-density lipoprotein; MR, Mendelian randomisation; nSNPs, number of single nucleotide polymorphisms; P, corresponding *P*-value; SE, standard error of the effect estimate.

(XLSX)

**S12 Table. Genetically determined effect estimates from univariable and multivariable MR analyses (LDL, HDL, and apolipoprotein A-I).** Beta, effect estimate; HDL, high-density lipoprotein; LDL, low-density lipoprotein; MR, Mendelian randomisation; nSNPs, number of single nucleotide polymorphisms; P, corresponding *P*-value; SE, standard error of the effect estimate.

(XLSX)

**S13 Table. Genetically determined effect estimates from univariable and multivariable MR analyses (TG, HDL, and apolipoprotein A-I).** Beta, effect estimate; HDL, high-density lipoprotein; MR, Mendelian randomisation; nSNPs, number of single nucleotide polymorphisms; P, corresponding *P*-value; SE, standard error of the effect estimate; TG, triglycerides.

(XLSX)

**S14 Table. Effect estimates of 13 loci associated with apolipoprotein B but not the other 4 traits based on  $P < 5 \times 10^{-8}$ .** apoB, apolipoprotein B; Beta, beta coefficient; BP, base position; CHR, chromosome; eaf, effect allele frequency; p, *P*-value; SE, standard error.

(XLSX)

**S1 Text. Equation for F-statistic.**  
(DOCX)

## Acknowledgments

We are immensely grateful to the study participants of the UKBB.

## Author Contributions

**Conceptualization:** Tom G. Richardson, Eleanor Sanderson, George Davey Smith, Michael V. Holmes.

**Data curation:** Tom G. Richardson, George Davey Smith.

**Formal analysis:** Tom G. Richardson.

**Investigation:** Tom G. Richardson, Eleanor Sanderson, Tom M. Palmer, Mika Ala-Korpela, Brian A. Ference, George Davey Smith, Michael V. Holmes.

**Methodology:** Tom G. Richardson, Eleanor Sanderson, Tom M. Palmer, George Davey Smith, Michael V. Holmes.

**Software:** Eleanor Sanderson.

**Supervision:** George Davey Smith, Michael V. Holmes.

**Visualization:** Tom G. Richardson, Michael V. Holmes.

**Writing – original draft:** George Davey Smith, Michael V. Holmes.

**Writing – review & editing:** Tom G. Richardson, Eleanor Sanderson, Tom M. Palmer, Mika Ala-Korpela, Brian A. Ference, George Davey Smith, Michael V. Holmes.

## References

1. Cholesterol Treatment Trialists' Collaborators, Fulcher J, O'Connell R, Voysey M, Emberson J, Blackwell L, et al. Efficacy and safety of LDL-lowering therapy among men and women: meta-analysis of individual data from 174,000 participants in 27 randomised trials. *Lancet*. 2015; 385(9976):1397–405. [https://doi.org/10.1016/S0140-6736\(14\)61368-4](https://doi.org/10.1016/S0140-6736(14)61368-4) PMID: 25579834.
2. Cholesterol Treatment Trialists' Collaborators, Baigent C, Blackwell L, Emberson J, Holland LE, Reith C, et al. Efficacy and safety of more intensive lowering of LDL cholesterol: a meta-analysis of data from 170,000 participants in 26 randomised trials. *Lancet*. 2010; 376(9753):1670–81. [https://doi.org/10.1016/S0140-6736\(10\)61350-5](https://doi.org/10.1016/S0140-6736(10)61350-5) PMID: 21067804; PubMed Central PMCID: PMC2988224.
3. Cholesterol Treatment Trialists' Collaborators, Mihaylova B, Emberson J, Blackwell L, Keech A, Simes J, et al. The effects of lowering LDL cholesterol with statin therapy in people at low risk of vascular disease: meta-analysis of individual data from 27 randomised trials. *Lancet*. 2012; 380(9841):581–90. [https://doi.org/10.1016/S0140-6736\(12\)60367-5](https://doi.org/10.1016/S0140-6736(12)60367-5) PMID: 22607822; PubMed Central PMCID: PMC3437972.
4. Silverman MG, Ference BA, Im K, Wiviott SD, Giugliano RP, Grundy SM, et al. Association Between Lowering LDL-C and Cardiovascular Risk Reduction Among Different Therapeutic Interventions: A Systematic Review and Meta-analysis. *Jama*. 2016; 316(12):1289–97. <https://doi.org/10.1001/jama.2016.13985> PMID: 27673306
5. Collins R, Reith C, Emberson J, Armitage J, Baigent C, Blackwell L, et al. Interpretation of the evidence for the efficacy and safety of statin therapy. *The Lancet*. 2016; 388(10059):2532–61. [https://doi.org/10.1016/S0140-6736\(16\)31357-5](https://doi.org/10.1016/S0140-6736(16)31357-5)
6. Ference BA, Robinson J. G., Brook R. D., Catapano AL, Chapman MJ, Neff DR, Voros S, Giugliano RP, et al. Variation in PCSK9 and HMGCR and risk of cardiovascular disease and diabetes. *New England Journal of Medicine*. 2016; 375(22):2144–53. <https://doi.org/10.1056/NEJMoa1604304> PMID: 27959767
7. Ference BA, Majeed F., Penumetcha R., Flack JM, Brook RD. Effect of Naturally Random Allocation to Lower Low-Density Lipoprotein Cholesterol on the Risk of Coronary Heart Disease Mediated by

- Polymorphisms in NPC1L1, HMGCR, or Both. *Journal of the American College of Cardiology*. 2015; 65(15):1552–61. <https://doi.org/10.1016/j.jacc.2015.02.020> WOS:000352956500009. PMID: 25770315
8. Ference BA, Yoo W., Alesh I., Mahajan N, Mirowska KK, Mewada A, Kahn J, Afonso L, et al. Effect of Long-Term Exposure to Lower Low-Density Lipoprotein Cholesterol Beginning Early in Life on the Risk of Coronary Heart Disease A Mendelian Randomization Analysis. *Journal of the American College of Cardiology*. 2012; 60(25):2631–9. <https://doi.org/10.1016/j.jacc.2012.09.017> WOS:000312527000006. PMID: 23083789
  9. Holmes MV, Asselbergs FW, Palmer TM, Drenos F, Lanktree MB, Nelson CP, et al. Mendelian randomization of blood lipids for coronary heart disease. *Eur Heart J*. 2015; 36(9):539–50. <https://doi.org/10.1093/eurheartj/ehv571> PMID: 24474739.
  10. Holmes MV, Ala-Korpela M. What is 'LDL cholesterol'? *Nat Rev Cardiol*. 2019; 16(4):197–8. <https://doi.org/10.1038/s41569-019-0157-6> PMID: 30700860.
  11. Sniderman AD, Thanassoulis G, Glavinovic T, Navar AM, Pencina M, Catapano A, et al. Apolipoprotein B Particles and Cardiovascular Disease: A Narrative Review. *JAMA Cardiol*. 2019; 4(12): 1287–1295. <https://doi.org/10.1001/jamacardio.2019.3780> PMID: 31642874.
  12. Sniderman AD, Pencina M, Thanassoulis G. ApoB. *Circ Res*. 2019; 124(10):1425–7. <https://doi.org/10.1161/CIRCRESAHA.119.315019> PMID: 31070997.
  13. White J, Swerdlow DI, Preiss D, Fairhurst-Hunter Z, Keating BJ, Asselbergs FW, et al. Association of Lipid Fractions With Risks for Coronary Artery Disease and Diabetes. *JAMA Cardiol*. 2016; 1(6):692–9. <https://doi.org/10.1001/jamacardio.2016.1884> PMID: 27487401.
  14. Do R, Willer CJ, Schmidt EM, Sengupta S, Gao C, Peloso GM, et al. Common variants associated with plasma triglycerides and risk for coronary artery disease. *Nat Genet*. 2013; 45(11):1345–52. <https://doi.org/10.1038/ng.2795> PMID: 24097064; PubMed Central PMCID: PMC3904346.
  15. Ference BA, Kastelein JJP, Ginsberg HN, Chapman MJ, Nicholls SJ, Ray KK, et al. Association of Genetic Variants Related to CETP Inhibitors and Statins With Lipoprotein Levels and Cardiovascular Risk. *Jama*. 2017; 318(10):947–56. <https://doi.org/10.1001/jama.2017.11467> PMID: 28846118; PubMed Central PMCID: PMC5710502.
  16. Varbo A, Benn M, Tybjaerg-Hansen A, Jorgensen AB, Frikke-Schmidt R, Nordestgaard BG. Remnant cholesterol as a causal risk factor for ischemic heart disease. *J Am Coll Cardiol*. 2013; 61(4):427–36. <https://doi.org/10.1016/j.jacc.2012.08.1026> PMID: 23265341.
  17. Phillips AN, Smith GD. How independent are "independent" effects? Relative risk estimation when correlated exposures are measured imprecisely. *J Clin Epidemiol*. 1991; 44(11):1223–31. [https://doi.org/10.1016/0895-4356\(91\)90155-3](https://doi.org/10.1016/0895-4356(91)90155-3) PMID: 1941017.
  18. Davey Smith G, Phillips AN. Correlation without a cause: an epidemiological odyssey. *Int J Epidemiol*. Forthcoming [2020].
  19. Sniderman AD, Williams K, Contois JH, Monroe HM, McQueen MJ, de Graaf J, et al. A meta-analysis of low-density lipoprotein cholesterol, non-high-density lipoprotein cholesterol, and apolipoprotein B as markers of cardiovascular risk. *Circ Cardiovasc Qual Outcomes*. 2011; 4(3):337–45. <https://doi.org/10.1161/CIRCOUTCOMES.110.959247> PMID: 21487090.
  20. Emerging Risk Factors Collaboration, Di Angelantonio E, Gao P, Pennells L, Kaptoge S, Caslake M, et al. Lipid-related markers and cardiovascular disease prediction. *Jama*. 2012; 307(23):2499–506. <https://doi.org/10.1001/jama.2012.6571> PMID: 22797450; PubMed Central PMCID: PMC4211641.
  21. Brunner FJ, Waldeyer C, Ojeda F, Salomaa V, Kee F, Sans S, et al. Application of non-HDL cholesterol for population-based cardiovascular risk stratification: results from the Multinational Cardiovascular Risk Consortium. *Lancet*. 2019; 394(10215): 2173–2183. [https://doi.org/10.1016/S0140-6736\(19\)32519-X](https://doi.org/10.1016/S0140-6736(19)32519-X) PMID: 31810609.
  22. Welsh C, Celis-Morales CA, Brown R, Mackay DF, Lewsey J, Mark PB, et al. Comparison of Conventional Lipoprotein Tests and Apolipoproteins in the Prediction of Cardiovascular Disease. *Circulation*. 2019; 140(7):542–52. <https://doi.org/10.1161/CIRCULATIONAHA.119.041149> PMID: 31216866; PubMed Central PMCID: PMC6693929.
  23. Mora S, Martin SS, Virani SS. Cholesterol Insights and Controversies From the UK Biobank Study. *Circulation*. 2019; 140(7):553–5. <https://doi.org/10.1161/CIRCULATIONAHA.119.042134> PMID: 31403842; PubMed Central PMCID: PMC6783127.
  24. Grundy SM, Stone NJ, Bailey AL, Beam C, Birtcher KK, Blumenthal RS, et al. 2018 AHA/ACC/AACVPR/AAPA/ABC/ACPM/ADA/AGS/APhA/ASPC/NLA/PCNA Guideline on the Management of Blood Cholesterol: A Report of the American College of Cardiology/American Heart Association Task Force on Clinical Practice Guidelines. *Circulation*. 2019; 139(25):e1082–e143. <https://doi.org/10.1161/CIR.0000000000000625> PMID: 30586774.

25. Mach F, Baigent C, Catapano AL, Koskinas KC, Casula M, Badimon L, et al. 2019 ESC/EAS Guidelines for the management of dyslipidaemias: lipid modification to reduce cardiovascular risk. *Eur Heart J*. 2020; 41(1): 111–188. Epub 2019 Aug 31. <https://doi.org/10.1093/eurheartj/ehz455> PMID: 31504418.
26. Ference BA, Kastelein JJP, Ray KK, Ginsberg HN, Chapman MJ, Packard CJ, et al. Association of Triglyceride-Lowering LPL Variants and LDL-C-Lowering LDLR Variants With Risk of Coronary Heart Disease. *Jama*. 2019; 321(4):364–73. <https://doi.org/10.1001/jama.2018.20045> PMID: 30694319; PubMed Central PMCID: PMC6439767.
27. Davey Smith G, Ebrahim S. 'Mendelian randomization': Can genetic epidemiology contribute to understanding environmental determinants of disease? *Int J Epidemiol*. 2003; 32(1):1–22. <https://doi.org/10.1093/ije/dyg070> PMID: 12689998
28. Sanderson E, Davey Smith G, Windmeijer F, Bowden J. An examination of multivariable Mendelian randomization in the single sample and two-sample summary data settings. *Int J Epidemiol*. 2019; 48(3): 713–727. <https://doi.org/10.1093/ije/dyy262> PMID: 30535378
29. Nikpay M, Goel A, Won HH, Hall LM, Willenborg C, Kanoni S, et al. A comprehensive 1,000 Genomes-based genome-wide association meta-analysis of coronary artery disease. *Nat Genet*. 2015; 47(10):1121–30. <https://doi.org/10.1038/ng.3396> PMID: 26343387; PubMed Central PMCID: PMC4589895.
30. Sudlow C, Gallacher J, Allen N, Beral V, Burton P, Danesh J, et al. UK biobank: an open access resource for identifying the causes of a wide range of complex diseases of middle and old age. *PLoS Med*. 2015; 12(3):e1001779. <https://doi.org/10.1371/journal.pmed.1001779> PMID: 25826379; PubMed Central PMCID: PMC4380465.
31. Elliott P, Peakman TC, Biobank UK. The UK Biobank sample handling and storage protocol for the collection, processing and archiving of human blood and urine. *Int J Epidemiol*. 2008; 37(2):234–44. <https://doi.org/10.1093/ije/dym276> PMID: 18381398.
32. Fry D, Almond R, Moffat S, Gordon M, Singh P. Companion Document to Accompany Serum Biomarker Data [Internet]. UK Biobank Biomarker Project. 2019 [cited 2020 Feb 4]. Available from: [https://biobank.ndph.ox.ac.uk/showcase/showcase/docs/serum\\_biochemistry.pdf](https://biobank.ndph.ox.ac.uk/showcase/showcase/docs/serum_biochemistry.pdf).
33. Anderson CA, Pettersson FH, Clarke GM, Cardon LR, Morris AP, Zondervan KT. Data quality control in genetic case-control association studies. *Nat Protoc*. 2010; 5(9):1564–73. <https://doi.org/10.1038/nprot.2010.116> PMID: 21085122; PubMed Central PMCID: PMC3025522.
34. Loh PR, Tucker G, Bulik-Sullivan BK, Vilhjalmsson BJ, Finucane HK, Salem RM, et al. Efficient Bayesian mixed-model analysis increases association power in large cohorts. *Nat Genet*. 2015; 47(3):284–90. <https://doi.org/10.1038/ng.3190> PMID: 25642633; PubMed Central PMCID: PMC4342297.
35. Loh PR, Kichaev G, Gazal S, Schoech AP, Price AL. Mixed-model association for biobank-scale datasets. *Nat Genet*. 2018; 50(7):906–8. <https://doi.org/10.1038/s41588-018-0144-6> PMID: 29892013; PubMed Central PMCID: PMC6309610.
36. Mitchell R, Elsworth BL, Raistrick CA, Paternoster L, Hemani G, Gaunt TR. MRC IEU UK Biobank GWAS pipeline version 2. 2019 [Internet]. University of Bristol [cited 2019 Aug 13]. Available from: <https://data.bris.ac.uk/data/dataset/pnoat8cxo0u52p6ynfaekeigi>.
37. Bycroft C, Freeman C, Petkova D, Band G, Elliott LT, Sharp K, et al. The UK Biobank resource with deep phenotyping and genomic data. *Nature*. 2018; 562(7726):203–9. <https://doi.org/10.1038/s41586-018-0579-z> PMID: 30305743.
38. Chang CC, Chow CC, Tellier LC, Vattikuti S, Purcell SM, Lee JJ. Second-generation PLINK: rising to the challenge of larger and richer datasets. *Gigascience*. 2015; 4:7. <https://doi.org/10.1186/s13742-015-0047-8> PMID: 25722852; PubMed Central PMCID: PMC4342193.
39. 1000 Genomes Project Consortium, Abecasis GR, Auton A, Brooks LD, DePristo MA, Durbin RM, et al. An integrated map of genetic variation from 1,092 human genomes. *Nature*. 2012; 491(7422):56–65. <https://doi.org/10.1038/nature11632> PMID: 23128226; PubMed Central PMCID: PMC3498066.
40. Global Lipids Genetics Consortium, Willer CJ, Schmidt EM, Sengupta S, Peloso GM, Gustafsson S, et al. Discovery and refinement of loci associated with lipid levels. *Nat Genet*. 2013; 45(11):1274–83. <https://doi.org/10.1038/ng.2797> PMID: 24097068; PubMed Central PMCID: PMC3838666.
41. Kettunen J, Demirkan A, Wurtz P, Draisma HH, Haller T, Rawal R, et al. Genome-wide study for circulating metabolites identifies 62 loci and reveals novel systemic effects of LPA. *Nat Commun*. 2016; 7:11122. <https://doi.org/10.1038/ncomms11122> PMID: 27005778.
42. Davies NM, Holmes MV, Davey Smith G. Reading Mendelian randomisation studies: a guide, glossary, and checklist for clinicians. *BMJ*. 2018; 362:k601. <https://doi.org/10.1136/bmj.k601> PMID: 30002074; PubMed Central PMCID: PMC6041728 interests and declare that we have no competing interests.
43. Davey Smith G, Hemani G. Mendelian randomization: genetic anchors for causal inference in epidemiological studies. *Hum Mol Genet*. 2014; 23(R1):R89–98. <https://doi.org/10.1093/hmg/ddu328> PMID: 25064373; PubMed Central PMCID: PMC4170722.

44. Bowden J, Del Greco MF, Minelli C, Davey Smith G, Sheehan NA, Thompson JR. Assessing the suitability of summary data for two-sample Mendelian randomization analyses using MR-Egger regression: the role of the I<sup>2</sup> statistic. *Int J Epidemiol*. 2016; 45(6): 1961–1974. <https://doi.org/10.1093/ije/dyw220> PMID: 27616674.
45. Sanderson E, Spiller W, Bowden J. Testing and Correcting for Weak Instruments in Two-sample Summary Data Multivariable Mendelian Randomisation. *bioRxiv*. Forthcoming 2020.
46. Hemani G, Zheng J, Elsworth B, Wade KH, Haberland V, Baird D, et al. The MR-Base platform supports systematic causal inference across the human phenome. *Elife*. 2018; 7: e34408. <https://doi.org/10.7554/eLife.34408> PMID: 29846171; PubMed Central PMCID: PMC5976434.
47. Wickham H. *ggplot2—Elegant Graphics for Data Analysis* (2nd Edition). London and Stuttgart, Germany: Springer Nature; 2016.
48. Viechtbauer W. Conducting Meta-Analyses in R with the metafor Package. *Journal of Statistical Software*. 2010; 36(3):48. <https://doi.org/10.18637/jss.v036.i03>
49. Amrhein V, Greenland S, McShane B. Scientists rise up against statistical significance. *Nature*. 2019; 567(7748):305–7. <https://doi.org/10.1038/d41586-019-00857-9> PMID: 30894741.
50. Sterne JA, Davey Smith G. Sifting the evidence—what’s wrong with significance tests? *BMJ*. 2001; 322(7280):226–31. <https://doi.org/10.1136/bmj.322.7280.226> PMID: 11159626; PubMed Central PMCID: PMC1119478.
51. Burgess S, Davey Smith G, Davies NM, Dudbridge F, Gill D, Maria Glymour M, et al. Guidelines for performing Mendelian randomization investigations [version 1; peer review: awaiting peer review]. *Wellcome Open Res* 2019; 4:186.
52. Holmes MV, Ala-Korpela M, Smith GD. Mendelian randomization in cardiometabolic disease: challenges in evaluating causality. *Nat Rev Cardiol*. 2017; 14(10):577–90. <https://doi.org/10.1038/nrcardio.2017.78> PMID: 28569269; PubMed Central PMCID: PMC5600813.
53. Bowden J, Davey Smith G., Haycock P. C., Burgess S. Consistent Estimation in Mendelian Randomization with Some Invalid Instruments Using a Weighted Median Estimator. *Genetic Epidemiology*. 2016; 40(4):304–14. <https://doi.org/10.1002/gepi.21965> PMID: 27061298
54. Hartwig FP, Davey Smith G, Bowden J. Robust inference in summary data Mendelian randomization via the zero modal pleiotropy assumption. *Int J Epidemiol*. 2017; 46(6):1985–98. <https://doi.org/10.1093/ije/dyx102> PMID: 29040600; PubMed Central PMCID: PMC5837715.
55. Bowden J, Davey Smith G, Burgess S. Mendelian randomization with invalid instruments: effect estimation and bias detection through Egger regression. *Int J Epidemiol*. 2015; 44(2):512–25. <https://doi.org/10.1093/ije/dyv080> PMID: 26050253.
56. Rees JMB, Wood AM, Burgess S. Extending the MR-Egger method for multivariable Mendelian randomization to correct for both measured and unmeasured pleiotropy. *Stat Med*. 2017; 36(29):4705–18. <https://doi.org/10.1002/sim.7492> PMID: 28960498; PubMed Central PMCID: PMC5725762.
57. Hemani G, Bowden J, Davey Smith G. Evaluating the potential role of pleiotropy in Mendelian randomization studies. *Hum Mol Genet*. 2018; 27(R2):R195–R208. <https://doi.org/10.1093/hmg/ddy163> PMID: 29771313; PubMed Central PMCID: PMC6061876.
58. Mora S, Rifai N, Buring JE, Ridker PM. Fasting compared with nonfasting lipids and apolipoproteins for predicting incident cardiovascular events. *Circulation*. 2008; 118(10):993–1001. <https://doi.org/10.1161/CIRCULATIONAHA.108.777334> PMID: 18711012; PubMed Central PMCID: PMC2574817.
59. Emerging Risk Factors Collaboration, Di Angelantonio E, Sarwar N, Perry P, Kaptoge S, Ray KK, et al. Major lipids, apolipoproteins, and risk of vascular disease. *Jama*. 2009; 302(18):1993–2000. <https://doi.org/10.1001/jama.2009.1619> PMID: 19903920; PubMed Central PMCID: PMC3284229.
60. Boren J, Williams KJ. The central role of arterial retention of cholesterol-rich apolipoprotein-B-containing lipoproteins in the pathogenesis of atherosclerosis: a triumph of simplicity. *Curr Opin Lipidol*. 2016; 27(5):473–83. <https://doi.org/10.1097/MOL.0000000000000330> PMID: 27472409.
61. Ala-Korpela M. The culprit is the carrier, not the loads: cholesterol, triglycerides and apolipoprotein B in atherosclerosis and coronary heart disease. *Int J Epidemiol*. 2019; 48(5): 1389–1392. <https://doi.org/10.1093/ije/dyz068> PMID: 30968109.
62. Williams KJ, Tabas I. The response-to-retention hypothesis of early atherogenesis. *Arterioscler Thromb Vasc Biol*. 1995; 15(5):551–61. <https://doi.org/10.1161/01.atv.15.5.551> PMID: 7749869; PubMed Central PMCID: PMC2924812.
63. Dewey FE, Gusarova V, O’Dushlaine C, Gottesman O, Trejos J, Hunt C, et al. Inactivating Variants in ANGPTL4 and Risk of Coronary Artery Disease. *N Engl J Med*. 2016; 374(12):1123–33. <https://doi.org/10.1056/NEJMoa1510926> PMID: 26933753; PubMed Central PMCID: PMC4900689.

64. Graham MJ, Lee RG, Brandt TA, Tai LJ, Fu W, Peralta R, et al. Cardiovascular and Metabolic Effects of ANGPTL3 Antisense Oligonucleotides. *N Engl J Med*. 2017; 377(3):222–32. <https://doi.org/10.1056/NEJMoa1701329> PMID: 28538111.
65. Musunuru K, Pirruccello JP, Do R, Peloso GM, Guiducci C, Sougnez C, et al. Exome sequencing, ANGPTL3 mutations, and familial combined hypolipidemia. *N Engl J Med*. 2010; 363(23):2220–7. <https://doi.org/10.1056/NEJMoa1002926> PMID: 20942659; PubMed Central PMCID: PMC3008575.
66. HPS3/TIMI55-REVEAL Collaborative Group, Bowman L, Hopewell JC, Chen F, Wallendszus K, Stevens W, et al. Effects of Anacetrapib in Patients with Atherosclerotic Vascular Disease. *N Engl J Med*. 2017; 377(13):1217–27. <https://doi.org/10.1056/NEJMoa1706444> PMID: 28847206.
67. Holmes MV. Human genetics and drug development. *N Engl J Med*. 2019; 380:1076–9. <https://doi.org/10.1056/NEJMe1901565> PMID: 30865805
68. Rader DJ. Apolipoprotein A-I Infusion Therapies for Coronary Disease: Two Outs in the Ninth Inning and Swinging for the Fences. *JAMA Cardiol*. 2018; 3(9):799–801. <https://doi.org/10.1001/jamacardio.2018.2168> PMID: 30046821.
69. Bowden J, Del Greco MF, Minelli C, Davey Smith G, Sheehan N, Thompson J. A framework for the investigation of pleiotropy in two-sample summary data Mendelian randomization. *Stat Med*. 2017; 36(11): 1783–1802. <https://doi.org/10.1002/sim.7221> PMID: 28114746.
70. Zhu Z, Zheng Z, Zhang F, Wu Y, Trzaskowski M, Maier R, et al. Causal associations between risk factors and common diseases inferred from GWAS summary data. *Nat Commun*. 2018; 9(1):224. <https://doi.org/10.1038/s41467-017-02317-2> PMID: 29335400; PubMed Central PMCID: PMC5768719.
71. Goldstein JL, Brown MS. A century of cholesterol and coronaries: from plaques to genes to statins. *Cell*. 2015; 161(1):161–72. <https://doi.org/10.1016/j.cell.2015.01.036> PMID: 25815993; PubMed Central PMCID: PMC4525717.
72. Libby P, Buring JE, Badimon L, Hansson GK, Deanfield J, Bittencourt MS, et al. Atherosclerosis. *Nat Rev Dis Primers*. 2019; 5(1):56. <https://doi.org/10.1038/s41572-019-0106-z> PMID: 31420554.
73. Hegele RA. Plasma lipoproteins: genetic influences and clinical implications. *Nat Rev Genet*. 2009; 10(2):109–21. <https://doi.org/10.1038/nrg2481> PMID: 19139765.
74. Wurtz P, Havulinna AS, Soininen P, Tynkynen T, Prieto-Merino D, Tillin T, et al. Metabolite profiling and cardiovascular event risk: a prospective study of 3 population-based cohorts. *Circulation*. 2015; 131(9):774–85. <https://doi.org/10.1161/CIRCULATIONAHA.114.013116> PMID: 25573147; PubMed Central PMCID: PMC4351161.