

# BMJ Open

## The challenge of early renal cancer detection: symptom patterns and incidental diagnosis rate in a multicentre prospective UK cohort of patients presenting with suspected renal cancer

Journal:	<i>BMJ Open</i>
Manuscript ID	bmjopen-2019-035938.R2
Article Type:	Original research
Date Submitted by the Author:	17-Feb-2020
Complete List of Authors:	Vasudev, Naveen; University of Leeds, Leeds Institute of Medical Research at St James's Wilson, Michelle; University of Leeds, Leeds Institute of Medical Research at St James's Stewart, Grant; University of Cambridge; NHS Lothian Adeyoju, Adebajji; Stockport NHS Foundation Trust Cartledge, Jon; Saint James's University Hospital Kimuli, Michael; Saint James's University Hospital Datta, Shibendra; University Hospital of Wales Healthcare NHS Trust Hanbury, Damian; Lister Hospital Hrouda, David; Charing Cross Hospital Oades, Grenville; Queen Elizabeth University Hospital Patel, Poulam ; University of Nottingham, Division of Cancer and Stem Cell Soomro, Naeem; Newcastle Upon Tyne Hospitals NHS Foundation Trust Sullivan, Mark; Oxford University Hospitals NHS Foundation Trust Webster, Jeff; Northwick Park Hospital Selby, Peter; University of Leeds, Leeds Institute of Medical Research at St James's Banks, Rosamonde; University of Leeds, Leeds Institute of Medical Research at St James's
<b>Primary Subject Heading</b>:	Oncology
Secondary Subject Heading:	Oncology, Public health, Health policy
Keywords:	Kidney tumours < ONCOLOGY, PUBLIC HEALTH, Health policy < HEALTH SERVICES ADMINISTRATION & MANAGEMENT

SCHOLARONE™  
Manuscripts

## The challenge of early renal cancer detection: symptom patterns and incidental diagnosis rate in a multicentre prospective UK cohort of patients presenting with suspected renal cancer

Naveen S. Vasudev<sup>1</sup>, Michelle Wilson<sup>1</sup>, Grant D. Stewart<sup>2\*</sup>, Adebajji Adeyoku<sup>3</sup>, Jon Cartledge<sup>4</sup>, Michael Kimuli<sup>4</sup>, Shibendra Datta<sup>5</sup>, Damian Hanbury<sup>6</sup>, David Hrouda<sup>7</sup>, Grenville Oades<sup>8</sup>, Poulam Patel<sup>9</sup>, Naeem Soomro<sup>10</sup>, Mark Sullivan<sup>11</sup>, Jeff Webster<sup>12</sup>, Peter J. Selby<sup>1</sup>, Rosamonde E. Banks<sup>1</sup>

<sup>1</sup>Leeds Institute of Medical Research at St James's, St. James's University Hospital, Beckett Street, Leeds LS9 7TF, UK.

<sup>2</sup>NHS Lothian, Edinburgh, UK.

<sup>3</sup>Stockport NHS Foundation Trust, Stockport, UK.

<sup>4</sup>Department of Urology, St James's University Hospital, Beckett Street, Leeds LS9 7TF, UK.

<sup>5</sup>University Hospital of Wales, Cardiff Heath Park, Cardiff, Wales CF14 4XW

<sup>6</sup>Lister Hospital, Stevenage SG1 4AB UK

<sup>7</sup>Charing Cross Hospital, Imperial College Healthcare NHS Trust, London W6 8RF

<sup>8</sup>Queen Elizabeth University Hospital, Glasgow G51 4TF UK

<sup>9</sup>Division of Cancer & Stem Cells, School of Medicine, University of Nottingham, Nottingham UK

<sup>10</sup>Newcastle Upon Tyne Hospitals NHS Foundation Trust, Newcastle upon Tyne, UK

<sup>11</sup>Oxford University Hospitals NHS Foundation Trust, Oxford UK

<sup>12</sup>Northwick Park Hospital Watford Road Harrow, HA1 3UJ UK

\*Current affiliation: Department of Surgery, University of Cambridge, Cambridge Biomedical Campus, Addenbrooke's Hospital, Cambridge, CB2 0QQ, UK

Corresponding author: Dr N Vasudev, St. James's University Hospital, Beckett Street, Leeds LS9 7TF, UK. Tel: +44 113 2067680; Fax: +44 113 2429886; e-mail: n.vasudev@leeds.ac.uk

**Key words:** Diagnosis; Haematuria; Incidental; Presentation; Renal cell carcinoma; Symptoms

## Abstract

**Objectives:** To describe the frequency and nature of symptoms in patients presenting with suspected renal cell carcinoma (RCC) and examine their reliability in achieving early diagnosis

**Design:** Multicentre prospective observational cohort study

**Setting and Participants:** Eleven UK centres recruiting patients presenting with suspected newly diagnosed RCC. Symptoms reported by patients were recorded and reviewed. Comprehensive clinico-pathological and outcome data were also collected.

**Outcomes:** Type and frequency of reported symptoms. Incidental diagnosis rate. Metastasis-free and cancer-specific survival.

**Results:** From 706 patients recruited between 2011-2014, 608 patients with a confirmed RCC formed the primary study population. The majority (60%) of patients were diagnosed incidentally. 87% of patients with stage Ia and 36% with stage III or IV disease presented incidentally. Visible haematuria was reported in 23% of patients and was commonly associated with advanced disease (49% had stage III or IV disease). Symptomatic presentation was associated with poorer outcomes, likely reflecting the presence of higher stage disease. Symptom patterns amongst the 54 patients subsequently found to have a benign renal mass were similar to those with a confirmed RCC.

**Conclusions:** Raising public awareness of RCC-related symptoms as a strategy to improve early detection rates is limited by the fact that related symptoms are relatively uncommon and often associated with advanced disease. Greater attention must be paid to the feasibility of screening strategies and the identification of circulating diagnostic markers.

## Strengths and limitations of this study

- The multicentre, prospective nature of this study, amongst a contemporary cohort of UK patients, is unique and represents an important strength over previous studies
- Comprehensive linked clinico-pathological and outcome data was available for all patients
- Symptoms amongst patients subsequently found to have a benign renal mass are reported in parallel
- This was not a population-based study and our cohort represents only a small proportion of all patients diagnosed with RCC in the UK within the study period
- Patient reported symptoms were recorded following referral to secondary care and may therefore be subject to recall bias

## Introduction

The incidence of kidney cancer in Europe is amongst the highest worldwide. In the UK, incidence rates have risen by 47% increase over the past decade, with 12,000 new cases in 2015 <sup>1</sup>. By 2035, it is predicted that this number will rise to over 20,000 new cases per annum and kidney cancer will come to represent the 4<sup>th</sup> commonest cancer amongst males and 9<sup>th</sup> commonest amongst females in the UK <sup>2</sup>.

Diagnosing patients with kidney cancer can be challenging <sup>3</sup>. Renal cell carcinomas (RCCs), which make up the majority (85%) of kidney cancers, are characteristically insidious in onset. The once classical triad of haematuria, pain and abdominal mass is now recognised to be rare and symptoms, if present at all, can be vague, non-specific and delayed in onset. Whilst early diagnosis is recognised to be key in achieving optimal outcomes, many patients still present with advanced disease. In 2017 in England, for example, figures show that amongst patients with a recorded stage at diagnosis, 19% had stage III and 23% had stage IV disease, at the time of presentation <sup>4</sup>.

Campaigns to raise awareness of kidney cancer amongst the public and doctors have been employed in an effort to improve early diagnosis rates <sup>5</sup>. Understanding how patients present may help to inform such strategies. Unlike previous studies, we prospectively collected information on symptoms reported by patients at the time of their diagnosis of suspected RCC, following recruitment to a large, contemporary, multi-institutional UK RCC biobank <sup>6</sup>. The aims of this sub-study were to describe symptoms reported by patients, define the current rate of incidental diagnosis and

1  
2  
3 look at how these factors relate to patient outcomes, with the goal of better  
4  
5 understanding the challenges in early RCC diagnosis.  
6  
7  
8  
9

## 10 **Methods**

11  
12 The design was a multicentre prospective observational cohort study. Patients with a  
13 renal mass on imaging suspicious of RCC, of all stages, with no prior treatment,  
14 were eligible. Patients were approached and consented to participate in the study  
15 prior to surgery or biopsy, before diagnosis of RCC was confirmed. Full details  
16 regarding the inclusion and exclusion criteria are as previously reported <sup>6</sup>.  
17  
18  
19  
20  
21  
22  
23

24 Comprehensive clinical and pathological information was collected.  
25  
26  
27  
28

29 At the time of recruitment to the study, patients were asked about the presence and  
30 nature of symptoms leading to their diagnosis of suspected RCC, which was  
31 recorded using paper case-report forms (CRF). Specific questions relating to  
32 commonly related 'RCC-type' local symptoms (pain, haematuria, abdominal mass  
33 and/or other) and/or systemic symptoms (weight loss (any), loss of appetite, sweats,  
34 fevers, fatigue and/or other) were recorded. In addition, the investigator completing  
35 the CRF was asked to state whether the diagnosis was incidental in nature and  
36 included a subsequent free-text box requesting a description of how the patient was  
37 diagnosed. All cases were independently reviewed by two reviewers (NV and RB) to  
38 confirm or refute whether the diagnosis would be regarded as incidental or not (i.e.  
39 were any symptoms reported and, if so, would they be regarded as being related to  
40 the finding of RCC), with additional reference to individual electronic case notes  
41 where available. Reported presence of RCC-type symptoms, many of which, such as  
42 pain, are non-specific, was not always related to the finding of RCC and, where  
43  
44  
45  
46  
47  
48  
49  
50  
51  
52  
53  
54  
55  
56  
57  
58  
59  
60

1  
2  
3 applicable therefore, considered incidental. Cases with insufficient data or where the  
4  
5 incidental nature of the diagnosis remained uncertain were not classified. Patients  
6  
7 being investigated for asymptomatic hypertension were not classified as incidental <sup>7</sup>.  
8  
9

10  
11  
12 Metastasis-free survival (MFS) was calculated for patients with localised disease,  
13  
14 defined as the period from date of nephrectomy to date of distant recurrence.  
15

16  
17 Patients without recurrence were censored at the date they were last known to be  
18  
19 recurrence-free (for patients who died without recurrence this was date of death).  
20

21  
22 Cancer-specific survival (CSS) was defined as the period from date of nephrectomy  
23  
24 to the date of cancer-related death. Patients with a non-cancer related death were  
25  
26 censored at their date of death and patients still alive were censored at the last date  
27  
28 they were known to be alive. Kaplan-Meier plots were produced to visualise survival  
29  
30 and the log-rank test was used to detect statistically significant difference between  
31  
32 survival curves.  
33  
34

### 35 36 **Public and Patient Involvement**

37  
38 Patients were extensively involved in the design, delivery and evaluation of the NIHR  
39  
40 Programme supporting this work. Patients were not directly involved in the design or  
41  
42 evaluation of the current report.  
43  
44  
45  
46  
47  
48  
49  
50  
51  
52  
53  
54  
55  
56  
57  
58  
59  
60

## Results

Between July 2011 and June 2014, 706 patients were recruited to the study from 11 UK centres (8 England; 2 Scotland; 1 Wales). Details regarding recruitment by centre are shown in **Supplementary Table 1**. The flow of patients through the study is shown in **Figure 1**. RCC was confirmed in 608 (86%) patients, amongst whom median follow-up was 4.8 yrs (IQR: 3.7, 5.2), and benign renal mass in 54 (7.6%) patients. The remaining 44 (6.4%) patients either did not undergo biopsy or nephrectomy or had no tumour in their biopsy cores (n=33), had another (not RCC) malignancy (n=5), or an alternative benign pathology (n=6)<sup>6</sup>. Amongst all patients with a confirmed RCC, 422 (69%) patients reported having RCC-type symptoms at diagnosis, of whom 221 (52%) reported symptoms that were considered related to the presence of RCC. Amongst these 221 patients, 97 (44%) had local symptoms only, 19 (8.6%) had systemic symptoms only and 105 (47.5%) reported having both local and systemic symptoms. Patient and tumour characteristics by symptom type are shown in **Table 1**.

### ***Local RCC-related symptoms***

Amongst the 202 (33%) patients reporting local RCC-related symptoms, 137 (68%) reported visible haematuria and 126 (62%) reported pain, with only 14 (7%) patients reporting an abdominal mass. Patients presenting with haematuria had a median pathological tumour size of 75mm (range 16-155) and almost half had stage III (37.2%) or IV (12.4%) disease. Only four patients (0.6%) presented with the classical triad of an abdominal mass, haematuria and local pain. The median tumour size amongst these four patients was 105 mm (range 80-154 mm) on preoperative cross-sectional imaging. No significant differences were present when considered by



1  
2  
3 histological type, although the small number of patients with non-clear cell RCC  
4  
5 limits this comparison.  
6  
7  
8  
9

### 10 ***Systemic RCC-related symptoms***

11  
12 Amongst those reporting systemic symptoms related to their RCC, fatigue (62%),  
13  
14 weight loss (52%), sweats (38%) and loss of appetite (38%) were all commonly  
15  
16 reported. Fever was relatively uncommon (10%). Patients with systemic symptoms  
17  
18 were more likely to have grade 4 cancers and stage IV disease than those with local  
19  
20 RCC-related symptoms only and those with symptoms unrelated to RCC ( $p<0.01$ )  
21  
22 (Table 1).  
23  
24  
25  
26  
27  
28

### 29 ***Incidental diagnosis***

30  
31 Amongst the 582 patients in whom the nature of the diagnosis could be confidently  
32  
33 classified, 351 (60%) cases of RCC were deemed to have been diagnosed  
34  
35 incidentally. Patient and tumour characteristics by nature of diagnosis (incidental vs  
36  
37 non-incidental) are shown in Table 2. No association with patient sex was found and  
38  
39 distribution of histological subtype was similar between groups. Non-incidentally  
40  
41 detected tumours were larger and of higher grade and stage than incidentally  
42  
43 detected tumours ( $p<0.01$ ). Amongst patients diagnosed with a localised pT1a  
44  
45 tumour, the incidental diagnosis rate was 87%. Conversely, 22% of patients with  
46  
47 stage IV disease were considered to have been diagnosed incidentally. The nature  
48  
49 of the incidental diagnosis (e.g. during investigation for a known pre-existing  
50  
51 condition versus investigation of unrelated symptoms) is shown in Table 3.  
52  
53  
54  
55  
56  
57

### 58 ***Tumour size***

1  
2  
3 Pathological tumour size was available for 556 (91%) of patients. We looked at  
4  
5 symptoms in patients presenting with tumours  $\geq 10$  cm. Amongst the 66 patients with  
6  
7 a tumour  $\geq 10$ cm, 31 (47%) reported haematuria at the time of presentation, 33 (50%)  
8  
9 reported pain, and abdominal mass was reported in four (6%) patients. Almost a  
10  
11 quarter (16/66; 24%) of these patients were considered to have been diagnosed  
12  
13 incidentally, with 10 (15%) reporting no symptoms, despite the presence of a large  
14  
15 primary tumour. No effect of BMI was observed in relation to presence or absence of  
16  
17 symptoms.  
18  
19  
20  
21  
22

### 23 **Outcomes**

24  
25 We looked at survival outcomes by both symptom type (no RCC-type symptoms or  
26  
27 unrelated RCC-type symptoms vs. related RCC-type symptoms) and incidental  
28  
29 versus non-incidental diagnosis. Patients diagnosed with no RCC-type symptoms  
30  
31 and those reporting unrelated RCC-type symptoms had a significantly improved MFS  
32  
33 and CSS compared to patients with related RCC-type symptoms. Furthermore,  
34  
35 patients with systemic RCC-related symptoms had poorer outcomes than those with  
36  
37 local RCC symptoms only (**Figure 2 A and B**). Overall, patients with an incidental  
38  
39 diagnosis of RCC had improved MFS and CSS in comparison to those diagnosed  
40  
41 non-incidentally, although it is important to note that these effects were lost when  
42  
43 controlled for stage of disease (**Figure 3**).  
44  
45  
46  
47  
48  
49

### 50 **Patients presenting with benign renal masses**

51  
52 In total, 54 (7.6%) patients in our cohort were found to have a benign renal mass,  
53  
54 composed of oncocytoma (n=29), angiomyolipoma (n=8) and other lesions (n=17)  
55  
56 (**Table 4**). The incidental diagnosis rate was 56% amongst the 52 evaluable patients.  
57  
58  
59  
60

1  
2  
3 Haematuria and pain were reported in 57% and 52% of patients diagnosed non-  
4 incidentally. The majority (65%) reported symptoms, of whom 57% had local  
5 symptoms only, 17% had systemic symptoms only and 26% reported both local and  
6 systemic symptoms.  
7  
8  
9  
10  
11  
12  
13  
14

## 15 Discussion

16  
17 Early detection is widely held to be a key strategy towards improving outcomes in  
18 patients with RCC<sup>8</sup>. As in most solid cancers, disease stage and survival are closely  
19 linked, with 3-year CSS rates in our cohort for example, of 99% and 47% for stage I  
20 and stage IV cancers, respectively (data not shown). Symptoms of kidney cancer  
21 such as visible haematuria and flank pain are well documented and NHS initiatives  
22 such as 'be clear on cancer: blood in your pee' campaign have been aimed at  
23 prompting the public to seek early medical attention<sup>5</sup>. Nevertheless, many patients  
24 still present with overt or micro-metastatic disease. Understanding the type and  
25 frequency of symptoms patients with newly diagnosed RCC report is critical in  
26 beginning to address this issue and understand whether simply raising awareness  
27 amongst doctors and the public is sufficient or other strategies are needed.  
28  
29  
30  
31  
32  
33  
34  
35  
36  
37  
38  
39  
40  
41  
42  
43  
44

45 Our study highlights the significant challenges in diagnosing patients with kidney  
46 cancer. Almost a third of patients in our cohort were symptomless at the time of  
47 diagnosis, amongst whom nearly a quarter (24%) had stage III or IV disease. Visible  
48 haematuria, a hallmark symptom of this disease, was recorded in just 23% of  
49 patients overall. Even amongst patients with large ( $\geq 10$ cm) tumours, less than half  
50 (47%) reported haematuria as a symptom. Prior reports using UK general practice  
51 database records have suggested rates of haematuria as low as 18% in patients  
52  
53  
54  
55  
56  
57  
58  
59  
60

1  
2  
3 presenting with kidney cancer, compounded by the low positive predictive value  
4 (PPV) (1%) of this symptom for RCC amongst those  $\geq 60$  yr old<sup>9</sup>. Furthermore,  
5  
6  
7 symptom patterns do not appear to reliably distinguish patients with benign renal  
8  
9 masses from those with RCC.  
10  
11  
12  
13  
14

15 Many studies have attempted to document the incidental diagnosis rate for renal  
16  
17 cancer. These previous studies have all been retrospective in nature, typically  
18  
19 derived from patients at a single centre, with widely varying rates of incidental  
20  
21 diagnosis, from 15% to 61%, in a less contemporaneous setting (broadly spanning  
22  
23 1970-2000)<sup>10-14</sup>. A more recent, global, study, involving 4288 patients presenting  
24  
25 with RCC between 2010-2012, reported an incidental diagnosis rate of 67%<sup>15</sup>.  
26  
27 However, no detail regarding how this was derived, or the nature and characteristics  
28  
29 of those diagnosed incidentally were presented in this study. Whilst retrospective  
30  
31 studies have the advantage of being feasible on a large scale, often with long term  
32  
33 follow-up data, recording of symptoms at presentation may not have been performed  
34  
35 for this purpose and may, therefore, not be complete. Furthermore, determining  
36  
37 whether a diagnosis is incidental or not can often require further detail beyond the  
38  
39 recording of symptoms alone, and which may not always be available when records  
40  
41 are reviewed retrospectively. Here, we collected symptoms reported by patients at  
42  
43 diagnosis in a planned way as part of the study design using standardised CRFs,  
44  
45 allowed for detailed free-text annotation of the history leading to the diagnosis and  
46  
47 asked investigators to specifically indicate whether this was felt to be incidental in  
48  
49 nature. We carefully reviewed the presenting symptoms and history for each patient  
50  
51 in our study, performed independently by two of the authors, to determine as  
52  
53 accurately as possible whether the diagnosis would be deemed incidental or not.  
54  
55  
56  
57  
58  
59  
60

1  
2  
3 Pain, for example, was a commonly reported symptom not necessarily attributable to  
4 the diagnosis of RCC, for example when located in an anatomically distinct site. We  
5 believe our figure of 60%, amongst a contemporary set of patients (2011-2014),  
6 provides a true reflection of the current incidental diagnosis rate of RCC in the UK,  
7 and supports the general rise in the incidental detection of kidney cancer that has  
8 been reported over time.  
9  
10  
11  
12  
13  
14  
15  
16  
17  
18

19 Our data shows that the majority (60%) of patients with RCC in the UK are being  
20 diagnosed incidentally, with almost three-quarters of these (74%) during  
21 investigation of symptoms unrelated to RCC. By contrast, a Norwegian study of 413  
22 patients diagnosed with RCC between 1997-2010 reported a 53% incidental  
23 diagnosis rate, detected in 63% of these patients during follow-up for a pre-existing  
24 condition <sup>16</sup>. The reason for this difference is not certain but may reflect the different  
25 time periods under study, given the more liberal use of cross-sectional imaging over  
26 time <sup>17</sup>. Consistent with other studies, patients with an incidentally detected RCC  
27 tended to have smaller, lower stage and grade tumours than those presenting with  
28 related symptoms, but, nevertheless, almost one in five of patients identified  
29 incidentally had stage III/IV disease at diagnosis. Whether patients who are  
30 diagnosed incidentally have better outcomes and potentially, therefore, different  
31 tumour biology, than those presenting with symptoms has been a matter of debate in  
32 the literature <sup>10,18-20</sup>. We did not find any difference in MFS or CSS between these  
33 two groups when matched for stage of disease, suggesting that incidental detection  
34 of advanced stage disease is not advantageous in terms of outcome.  
35  
36  
37  
38  
39  
40  
41  
42  
43  
44  
45  
46  
47  
48  
49  
50  
51  
52  
53  
54  
55  
56  
57  
58  
59  
60

1  
2  
3 Diagnosing kidney cancer early is therefore a significant public health challenge.  
4  
5 Data from the 2010 National Cancer Patient Experience Survey in England report  
6  
7 that almost 30% of 564 patients with renal cancer saw their general practitioner three  
8  
9 or more times before hospital referral <sup>21</sup>. Furthermore, results from the charity Kidney  
10  
11 Cancer UK (KCUK) 2018 patient survey showed that 22% of the 153 responders  
12  
13 who presented to their GP or an A+E department waited more than 3 months for a  
14  
15 diagnosis <sup>22</sup>. The results of the KCUK survey (n=175 in total) extend further, with  
16  
17 51% of patients reporting their cancer being detected incidentally during imaging for  
18  
19 an unrelated reason, and less than one third (31%) having symptoms due to RCC,  
20  
21 reflecting the findings from our own, much larger, study.  
22  
23  
24  
25  
26  
27

28 How then do we improve rates of early diagnosis in kidney cancer? Raising  
29  
30 awareness amongst the public to present early to their doctor, even with vague  
31  
32 symptoms, may seem logical, as well as increasing awareness with primary care  
33  
34 teams. But many patients remain asymptomatic until they have advanced stage  
35  
36 disease, and the PPVs for symptoms other than haematuria, such as pain and  
37  
38 fatigue, are even lower than 1% <sup>9</sup>, placing an impossible demand on general  
39  
40 practitioners, who are required to act as gatekeepers to secondary care. Five-year  
41  
42 survival rates for kidney cancer in the UK lag behind the European average which  
43  
44 may be related to differences in stage at diagnosis <sup>23</sup>. Greater availability of point-of-  
45  
46 care ultrasound may make a significant impact but its use varies widely across  
47  
48 Europe and has not been widely adopted in the UK, with potential barriers in terms of  
49  
50 time and training <sup>24</sup>.  
51  
52  
53  
54  
55  
56  
57  
58  
59  
60

1  
2  
3 Interest in exploring the potential for kidney cancer screening is growing <sup>8,25</sup>,  
4 particularly given the significant predicted rise in incidence <sup>2</sup>. The potential cost-  
5 effectiveness of performing a single, renal focused, USS amongst asymptomatic 60-  
6 year-old men has recently been reported <sup>26</sup>. However numerous uncertainties still  
7 exist, in terms of who to screen, with what modality, as well as unknowns in terms of  
8 associated harms versus benefit <sup>27</sup>. This is an area that clearly warrants further  
9 research. The identification of robust diagnostic biomarkers either in the serum or  
10 urine of patients that could be used to easily rule in or out the presence of RCC is  
11 another priority area for study <sup>28</sup>, with recent promising reports in the literature <sup>29</sup>,  
12 although still requiring significant further validation and improved performance.  
13  
14  
15  
16  
17  
18  
19  
20  
21  
22  
23  
24  
25  
26  
27

28 The strengths of this study include its prospective multicentre design, amongst a  
29 contemporary cohort of patients with robust linked clinicopathological and outcome  
30 data. The eligibility criteria for the study were broad and we believe our patient  
31 cohort to be largely representative, when considered at a population level (for  
32 comparisons by age, sex, stage and RCC type see **Supplementary Table 2**). It is  
33 possible that the proportion of patients in our study with stage IV disease may be  
34 slightly lower than in the true population, reflecting differences in the clinical pathway  
35 these patients may take, which may have impacted on our reported rate of incidental  
36 diagnosis. Furthermore, not all patients seen at participating centres with suspected  
37 RCC during the study period were recruited to the study and, overall, we  
38 acknowledge that our cohort size reflects only a small proportion (less than 10%) of  
39 all patients diagnosed with RCC in the UK during the study period. A further  
40 limitation is the fact that patient-reported symptoms were recorded following referral  
41 to secondary care and there may, therefore, be some element of recall bias.  
42  
43  
44  
45  
46  
47  
48  
49  
50  
51  
52  
53  
54  
55  
56  
57  
58  
59  
60

1  
2  
3 In summary, this study draws attention to the fact that reliance on symptoms for the  
4 early detection of kidney cancer is not robust. Our data suggest that improving public  
5 and professional awareness will have only a limited impact, and innovative  
6 biomarkers for this purpose remain to be identified. We suggest it is time to re-  
7  
8 examine the case for screening looking at opportunities to link RCC screening into  
9  
10 other programmes such as low dose CT scans for lung cancer health checks or  
11  
12 ultrasound-based screening for abdominal aortic aneurysms.  
13  
14  
15  
16  
17  
18  
19  
20  
21

22 **Contributors:** Funding: PJS and REB; Study design and concept: PJS, REB, NSV;  
23 Patient recruitment and data collection: AA, JC, MK, SD, DHa, DHr, GO, PP, NS,  
24 GDS, MS, JW, NSV, REB; Data analysis: MW, GDS, NSV, REB; Manuscript  
25 preparation: NSV, MW, GDS, PJS, REB. All authors participated in the  
26 interpretation of results, critically revised the paper and approved the final version  
27 to be published.  
28

29 **Ethics approval and consent to participate:** The study was approved by the  
30 Leeds East Research Ethics Committee (ethical approval 10/H1306/6). Patients  
31 were recruited to the study with their written informed consent  
32  
33

34 **Funding:** This project was funded by the National Institute for Health Research  
35 Programme Grants for Applied Research programme (project number NIHR PGfAR  
36 RP-PG-0707-10101) and has been published in full in Programme Grants for Applied  
37 Research Volume: 6, Issue: 3. Further information is available  
38 at: <https://www.journalslibrary.nihr.ac.uk/pgfar/pgfar06030/#/abstract>. Additional  
39 support was provided by the NIHR Leeds Clinical Research Facility. The views and  
40 opinions expressed by the authors in this publication are those of the authors and do  
41 not necessarily reflect those of the NHS, the NIHR or the Department of Health.  
42  
43

44 **Disclaimer:** The funder had no role in study design, data collection, data analysis or  
45 manuscript preparation  
46  
47

48 **Conflicts of interest:** N.S.V. discloses paid consultancy work and/or speaker  
49 honoraria for EUSA pharma, Bristol Myers Squibb, Pfizer, Merck and Novartis.  
50 G.D.S. discloses paid consultancy work for Pfizer, EUSA Pharma, Merck, and CMR  
51 Surgical and an advisory board role for the latter. The other authors declare no  
52 conflicts of interest.  
53  
54

55 **Acknowledgements:** We are grateful to the patients, the staff at participating  
56 centres who participated in patient recruitment and data collection, staff within the  
57 Leeds Biobanking and Sample Processing Lab and staff at the Leeds Clinical Trials  
58 Research Unit.  
59  
60



**Patient consent for publication:** Not required

**Data availability statement:** All data relevant to the study are included in the article

## References

1. Cancer Research UK. <https://www.cancerresearchuk.org/health-professional/cancer-statistics-for-the-uk>. Accessed August 2019.
2. Smittenaar CR, Petersen KA, Stewart K, Moitt N. Cancer incidence and mortality projections in the UK until 2035. *Br J Cancer* 2016;**115**:1147-55
3. Zhou Y, van Melle M, Singh H, Hamilton W, Lyratzopoulos G, Walter FM. Quality of the diagnostic process in patients presenting with symptoms suggestive of bladder or kidney cancer: a systematic review. *BMJ Open* 2019;**9**:e029143
4. [http://ncin.org.uk/publications/survival\\_by\\_stage](http://ncin.org.uk/publications/survival_by_stage). Accessed August 2019
5. <https://www.nhs.uk/be-clear-on-cancer/symptoms/blood-in-pee>. Accessed August 2019
6. Vasudev NS, Hutchinson M, Trainor S *et al*. UK multicentre prospective evaluation of the Leibovich score in localised renal cell carcinoma: performance has altered over time. *Urology* 2019. In Press
7. Chow WH, Gridley G, Fraumeni JF, Jr., Jarvholm B. Obesity, hypertension, and the risk of kidney cancer in men. *N Engl J Med* 2000;**343**:1305-11
8. Motzer RJ. Perspective: What next for treatment? *Nature* 2016;**537**:S111
9. Shephard E, Neal R, Rose P, Walter F, Hamilton WT. Clinical features of kidney cancer in primary care: a case-control study using primary care records. *Br J Gen Pract* 2013;**63**:e250-5
10. Tsui KH, Shvarts O, Smith RB, Figlin R, de Kernion JB, Belldegrin A. Renal cell carcinoma: prognostic significance of incidentally detected tumors. *J Urol* 2000;**163**:426-30
11. Lee CT, Katz J, Fearn PA, Russo P. Mode of presentation of renal cell carcinoma provides prognostic information. *Urol Oncol* 2002;**7**:135-40
12. Ficarra V, Prayer-Galetti T, Novella G *et al*. Incidental detection beyond pathological factors as prognostic predictor of renal cell carcinoma. *Eur Urol* 2003;**43**:663-9
13. Luciani LG, Cestari R, Tallarigo C. Incidental renal cell carcinoma-age and stage characterization and clinical implications: study of 1092 patients (1982-1997). *Urology* 2000;**56**:58-62
14. Jayson M, Sanders H. Increased incidence of serendipitously discovered renal cell carcinoma. *Urology* 1998;**51**:203-5
15. Laguna MP, Algaba F, Cadeddu J *et al*. Current patterns of presentation and treatment of renal masses: a clinical research office of the endourological society prospective study. *J Endourol* 2014;**28**:861-70

16. Sand KE, Hjelle KM, Rogde AJ, Gudbrandsdottir G, Bostad L, Beisland C. Incidentally detected renal cell carcinomas are highly associated with comorbidity and mortality unrelated to renal cell carcinoma. *Scand J Urol* 2013;**47**:462-71
17. <https://www.gov.uk/government/publications/review-of-radiation-dose-issues-from-the-use-of-ct-in-the-uk>. Accessed August 2019
18. Patard JJ, Rodriguez A, Rioux-Leclercq N, Guille F, Lobel B. Prognostic significance of the mode of detection in renal tumours. *BJU Int* 2002;**90**:358-63
19. Palsdottir HB, Hardarson S, Petursdottir V *et al*. Incidental detection of renal cell carcinoma is an independent prognostic marker: results of a long-term, whole population study. *J Urol* 2012;**187**:48-53
20. Gudbjartsson T, Thoroddsen A, Petursdottir V, Hardarson S, Magnusson J, Einarsson GV. Effect of incidental detection for survival of patients with renal cell carcinoma: results of population-based study of 701 patients. *Urology* 2005;**66**:1186-91
21. Lyratzopoulos G, Neal RD, Barbiere JM, Rubin GP, Abel GA. Variation in number of general practitioner consultations before hospital referral for cancer: findings from the 2010 National Cancer Patient Experience Survey in England. *Lancet Oncol* 2012;**13**:353-65
22. <https://www.kcuk.org.uk/patient-survey-2018/>. Accessed August 2019
23. De Angelis R, Sant M, Coleman MP *et al*. Cancer survival in Europe 1999-2007 by country and age: results of EURO CARE--5-a population-based study. *Lancet Oncol* 2014;**15**:23-34
24. Mengel-Jorgensen T, Jensen MB. Variation in the use of point-of-care ultrasound in general practice in various European countries. Results of a survey among experts. *Eur J Gen Pract* 2016;**22**:274-7
25. Shea MW. A proposal for a targeted screening program for renal cancer. *Front Oncol* 2013;**3**:207
26. Rossi SH, Klatte T, Usher-Smith JA *et al*. A Decision Analysis Evaluating Screening for Kidney Cancer Using Focused Renal Ultrasound. *Eur Urol Focus* 2019
27. Rossi SH, Klatte T, Usher-Smith J, Stewart GD. Epidemiology and screening for renal cancer. *World J Urol* 2018;**36**:1341-53
28. Capitanio U, Bensalah K, Bex A *et al*. Epidemiology of Renal Cell Carcinoma. *Eur Urol* 2019;**75**:74-84
29. Morrissey JJ, Mellnick VM, Luo J *et al*. Evaluation of Urine Aquaporin-1 and Perilipin-2 Concentrations as Biomarkers to Screen for Renal Cell Carcinoma: A Prospective Cohort Study. *JAMA Oncol* 2015;**1**:204-12

## Figure Legends

### Figure 1. Flow of patients through the study

**Figure 2. Kaplan Meier survival curves by symptom type.** Survival outcomes (A. MFS; B. CSS) in patients with no RCC-type symptoms, unrelated RCC-type symptoms, local RCC-related symptoms and those with systemic (+/- local) RCC-related symptoms

**Figure 3. Kaplan Meier survival curves by incidental vs. non-incidental diagnosis for all patients, stage I/II or stage III RCC.** A-C: MFS; D-F: CSS

**Table 1. Patient and tumour characteristics by symptom type**

For continuous variables, figures in table represent median (range) with corresponding p-value from the Kruskal-Wallis test and for categorical variables, figures in table represent n (%) with corresponding p-value from chi-squared test.

Characteristic	RCC-type symptoms reported (n=422)**				p-value
	No RCC-type symptoms (n=186)	Not RCC related (n=183)	RCC-related local symptoms only (n=97)	RCC-related systemic symptoms (+/- local) (n=124)	
Age (years)	65 (31-86)	63 (29-90)	63 (38-84)	62 (33-92)	0.31
Gender					
Female	67 (32.7)	62 (30.2)	21 (10.2)	55 (26.8)	
Male	119 (30.9)	121 (31.4)	76 (19.7)	69 (17.9)	0.01
BMI	28.5 (15.6-74.4)	27 (18.1-56.5)	28.8 (17.3-67.2)	27.5 (16-54.5)	0.01
Tumour size (mm)	44 (14-180)	43 (11-170)	74 (13-155)	75 (20-240)	<0.01
pT					
1a	83 (42.6)	88 (45.1)	16 (8.2)	8 (4.1)	
1b	46 (34.3)	42 (31.3)	19 (14.2)	27 (20.1)	
2	15 (19.7)	18 (23.7)	19 (25)	24 (31.6)	
3	38 (22.6)	33 (19.6)	42 (25)	55 (32.7)	
4	0 (0)	0 (0)	1 (25)	3 (75)	
X	1 (50)	1 (50)	0 (0)	0 (0)	
Missing	1 (100)	0 (0)	0 (0)	0 (0)	
NA	2 (20)	1 (10)	0 (0)	7 (70)	<0.01
Grade					
1	4 (40)	0 (0)	4 (40)	2 (20)	
2	55 (34.8)	50 (31.6)	25 (15.8)	28 (17.7)	
3	88 (32.2)	94 (34.4)	47 (17.2)	44 (16.1)	
4	13 (14.9)	13 (14.9)	19 (21.8)	42 (48.3)	
Missing	9 (39.1)	9 (39.1)	1 (4.3)	4 (17.4)	
NA	17 (43.6)	17 (43.6)	1 (2.6)	4 (10.3)	<0.01
Stage					
I	130 (39.8)	129 (39.4)	34 (10.4)	34 (10.4)	
II	12 (17.4)	17 (24.6)	18 (26.1)	22 (31.9)	
III	34 (24.5)	29 (20.9)	37 (26.6)	39 (28.1)	
IV	10 (18.9)	6 (11.3)	8 (15.1)	29 (54.7)	
Missing	0 (0)	2 (100)	0 (0)	0 (0)	<0.01
Tumour subtype					
Clear Cell	147 (31.7)	137 (29.6)	83 (17.9)	96 (20.7)	
Papillary	16 (27.1)	23 (39)	7 (11.9)	13 (22)	
Chromophobe	15 (32.6)	15 (30.4)	7 (15.2)	10 (21.7)	
Unclassified	7 (38.9)	6 (33.3)	0 (0)	5 (27.8)	
Other	1 (33)	2 (67)	0 (0)	0 (0)	0.81

\*NA=not applicable - patients underwent biopsy only or tumour ablation

\*\*18 patients reported symptoms but their relationship to RCC could not be determined

**Table 2. Patient and tumour characteristics by diagnosis type**

For continuous variables, figures in table represent median (range) with corresponding p-value from the Wilcoxon rank-sum test and for categorical variables, figures in table represent n (%) with corresponding p-value from chi-squared test.

Characteristic	Non-incident (n=231)	Incidental (n=351)	p-value
<b>Age (years)</b>	62 (33-92)	65 (29-90)	0.04
<b>Gender</b>			
<b>Female</b>	77 (38.3)	124 (61.7)	
<b>Male</b>	154 (40.4)	227 (59.6)	0.69
<b>BMI</b>	28.3 (15.6-67.2)	27.8 (17.2-57.7)	0.38
<b>Tumour size (path) (mm)</b>	75 (13-240)	42 (11-170)	<0.01
<b>Tumour size (CT) (mm)</b>	80 (16-250)	44 (10-170)	<0.01
<b>pT</b>			
<b>1a</b>	25 (12.8)	170 (87.2)	
<b>1b</b>	48 (37.2)	81 (62.8)	
<b>2</b>	46 (60.5)	30 (39.5)	
<b>3</b>	101 (61.2)	64 (38.8)	
<b>4</b>	4 (100)	0 (0)	
<b>X</b>	0 (0)	2 (100)	
<b>Missing</b>	0 (0)	1 (100)	
<b>NA*</b>	7 (70)	3 (30)	<0.01
<b>Grade</b>			
<b>1</b>	6 (66.7)	3 (33.3)	
<b>2</b>	56 (35.9)	100 (64.1)	
<b>3</b>	93 (34.6)	176 (65.4)	
<b>4</b>	65 (75.6)	21 (24.4)	
<b>Missing</b>	6 (26.1)	17 (73.9)	
<b>NA*</b>	5 (12.8)	34 (87.2)	<0.01
<b>Stage</b>			
<b>I</b>	70 (21.6)	254 (78.4)	
<b>II</b>	42 (60.9)	27 (39.1)	
<b>III</b>	80 (58.4)	57 (41.6)	
<b>IV</b>	39 (78)	11 (22)	
<b>Missing</b>	0 (0)	2 (100)	<0.01
<b>Tumour subtype</b>			
<b>Clear Cell</b>	186 (40.9)	269 (59.1)	
<b>Papillary</b>	21 (35.6)	38 (64.4)	
<b>Chromophobe</b>	19 (41.3)	28 (58.7)	
<b>Unclassified</b>	5 (27.8)	13 (72.2)	
<b>Other</b>	0 (0)	3 (100)	0.62

\*NA=not applicable, patients underwent biopsy only or tumour ablation

**Table 3. Nature of incidental diagnosis**

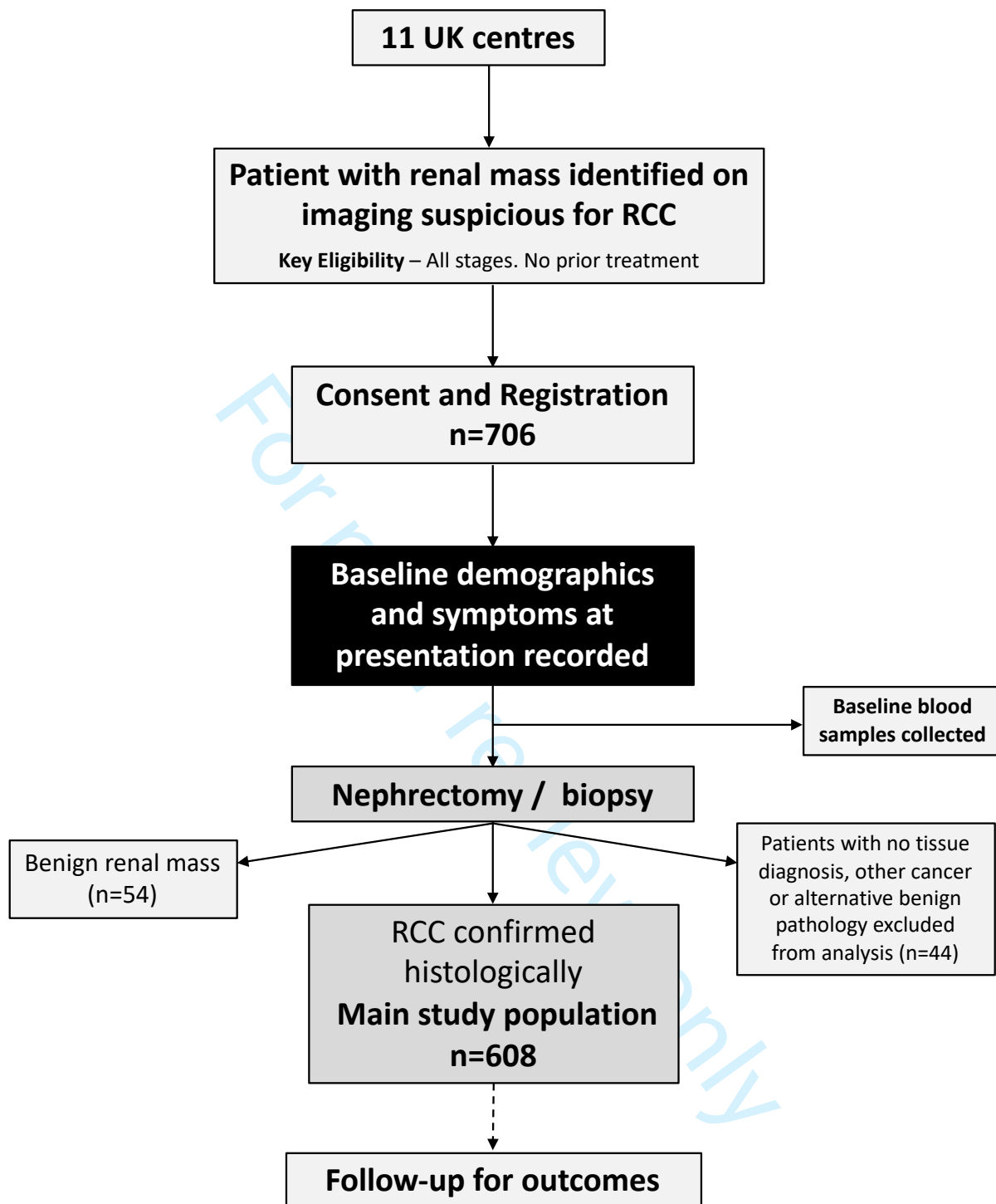
Type of incidental diagnosis	n (%)
<b>Investigation for pre-existing condition</b>	65 (18)
Another malignancy	34 (53)
Diabetes Mellitus	7 (11)
Hepatobiliary <sup>a</sup>	5 (8)
AAA screening / Post-aortic repair	3 (5)
Other <sup>b</sup>	16 (23)
<b>Investigation for signs or symptoms unrelated to RCC</b>	258 (74)
Gastrointestinal <sup>c</sup>	86 (33)
Urinary tract <sup>d</sup>	49 (19)
Hepatobiliary <sup>e</sup>	27 (10)
Respiratory <sup>f</sup>	20 (8)
Musculoskeletal <sup>g</sup>	16 (6)
Cardiovascular <sup>h</sup>	11 (4)
Trauma	7 (3)
Gynaecological	6 (3)
Anaemia	4 (2)
Miscellaneous <sup>i</sup>	32 (12)
<b>Routine health check<sup>k</sup></b>	16 (5)
<b>Not known<sup>l</sup></b>	12 (3)

AAA, abdominal aortic aneurysm; <sup>a</sup>cirrhosis, primary biliary cirrhosis, sclerosing cholangitis; <sup>b</sup>includes Addison's disease, chronic renal failure, crohn's disease, coeliac disease, ovarian cyst, renal stones, IgA nephropathy, Wegener's granulomatosis, polymyalgia rheumatica, ovarian cyst; <sup>c</sup>altered bowel habit, GI bleed, bloating/distension, abdominal pain, reflux; <sup>d</sup>urinary retention, prostatic symptoms, high PSA, urosepsis, renal colic, impaired renal function; <sup>e</sup>biliary colic, deranged liver function tests, jaundice, pancreatitis, cholecystitis; <sup>f</sup>shortness of breath, cough, haemoptysis, pneumonia; <sup>g</sup>back pain, leg pain, joint pain; <sup>h</sup>chest pain, myocardial infarction, claudication, endocarditis; <sup>i</sup>includes dizziness, syncope, elevated blood test values, ankle swelling; <sup>k</sup>Initial investigations were urine dip (6), USS (5), CT scan (2), blood tests (2), CXR (1); <sup>l</sup>insufficient information to classify

**Table 4. Characteristics and symptoms associated with benign renal masses**

Characteristic	All (n=54)	Oncocytoma (n=29)	AML (n=8)	Other* (n=17)
Age (years)	65 (32-86)	66 (42-86)	63 (59-68)	61 (32-78)
Gender				
Female	29 (53.7)	12 (41.4)	5 (62.5)	12 (70.6)
Male	25 (46.3)	17 (58.6)	3 (37.5)	5 (29.4)
BMI	27.6 (18.7-45.8)	27.8 (19.4-39.6)	28 (22-38.8)	26.4 (18.7-45.8)
CT size (cm)				
≤4	22 (44.9)	14 (50)	3 (50)	5 (33.3)
4 < - ≤7	18 (36.7)	11 (39.3)	2 (33.3)	5 (33.3)
7 < - ≤10	6 (12.2)	1 (3.6)	1 (16.7)	4 (26.7)
>10	3 (6.1)	2 (7.1)	0 (0)	1 (6.7)
NA	5 (-)	1 (-)	2 (-)	2 (-)
RCC-type symptoms				
No	19 (35.2)	10 (34.5)	4 (50)	5 (29.4)
Yes	35 (64.8)	19 (65.5)	4 (50)	12 (70.6)
Local symptoms				
No	6 (17.1)	3 (15.8)	1 (25)	2 (16.7)
Yes	29 (82.9)	16 (84.2)	3 (75)	10 (83.3)
Systemic symptoms				
No	20 (57.1)	12 (63.2)	1 (25)	7 (58.3)
Yes	15 (42.9)	7 (36.8)	3 (75)	5 (41.7)
Incidental diagnosis				
No	23 (42.5)	13 (44.8)	2 (25)	8 (47)
Yes	29 (54)	15 (51.7)	6 (75)	8 (47)
Not known	2 (3.5)	1 (3.5)	0 (0)	1 (6)

AML – angiomyolipoma \*consists of cystic nephroma (4), benign cyst (3), metanephric adenoma (2), mixed epithelial stromal tumour (2), haemangioblastoma (1), leiomyomata (1), multilocular cyst (1), myxoid mesenchymal tumour (1), Rosai Dorfman disease (1), solitary fibrous tumour (1)





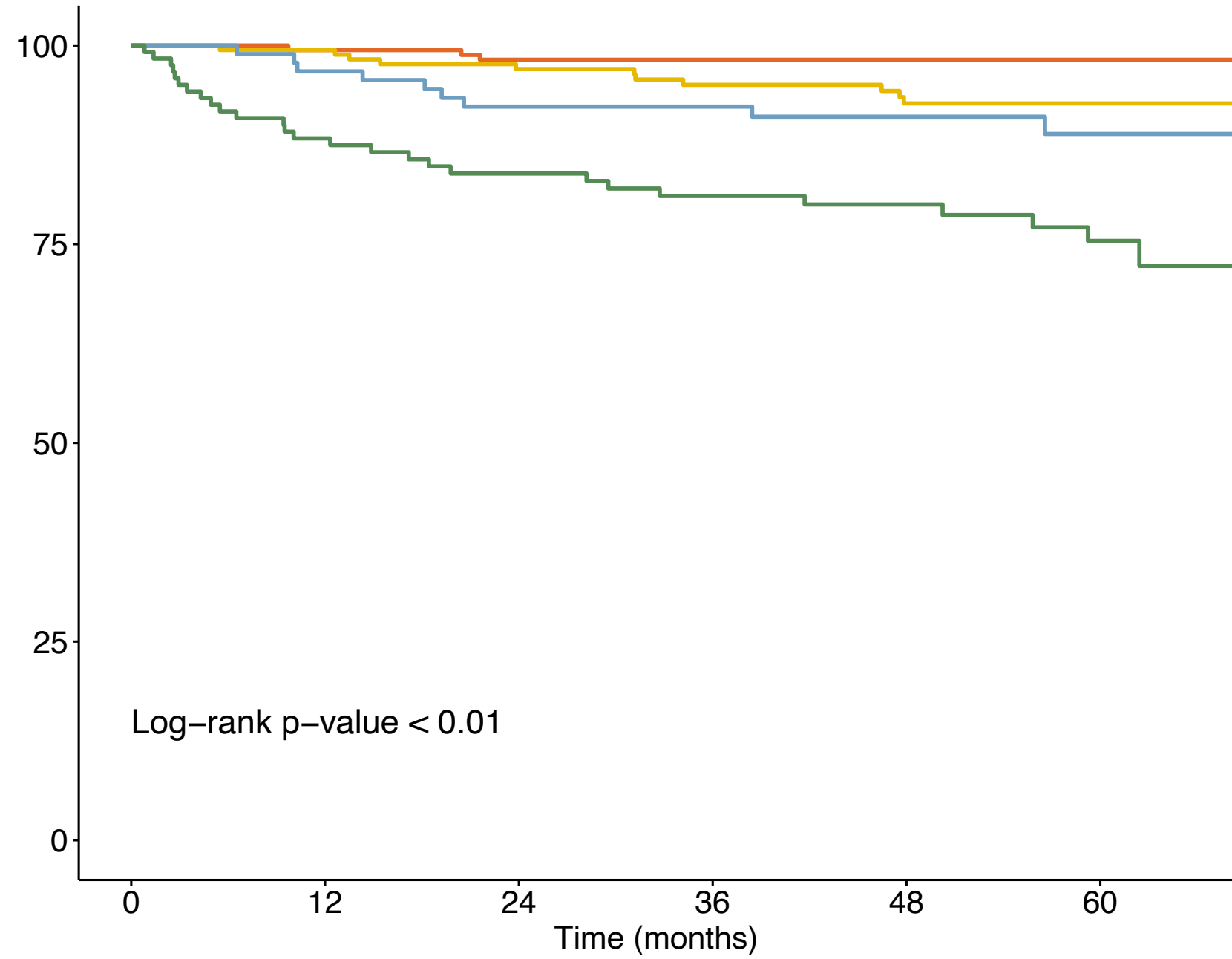
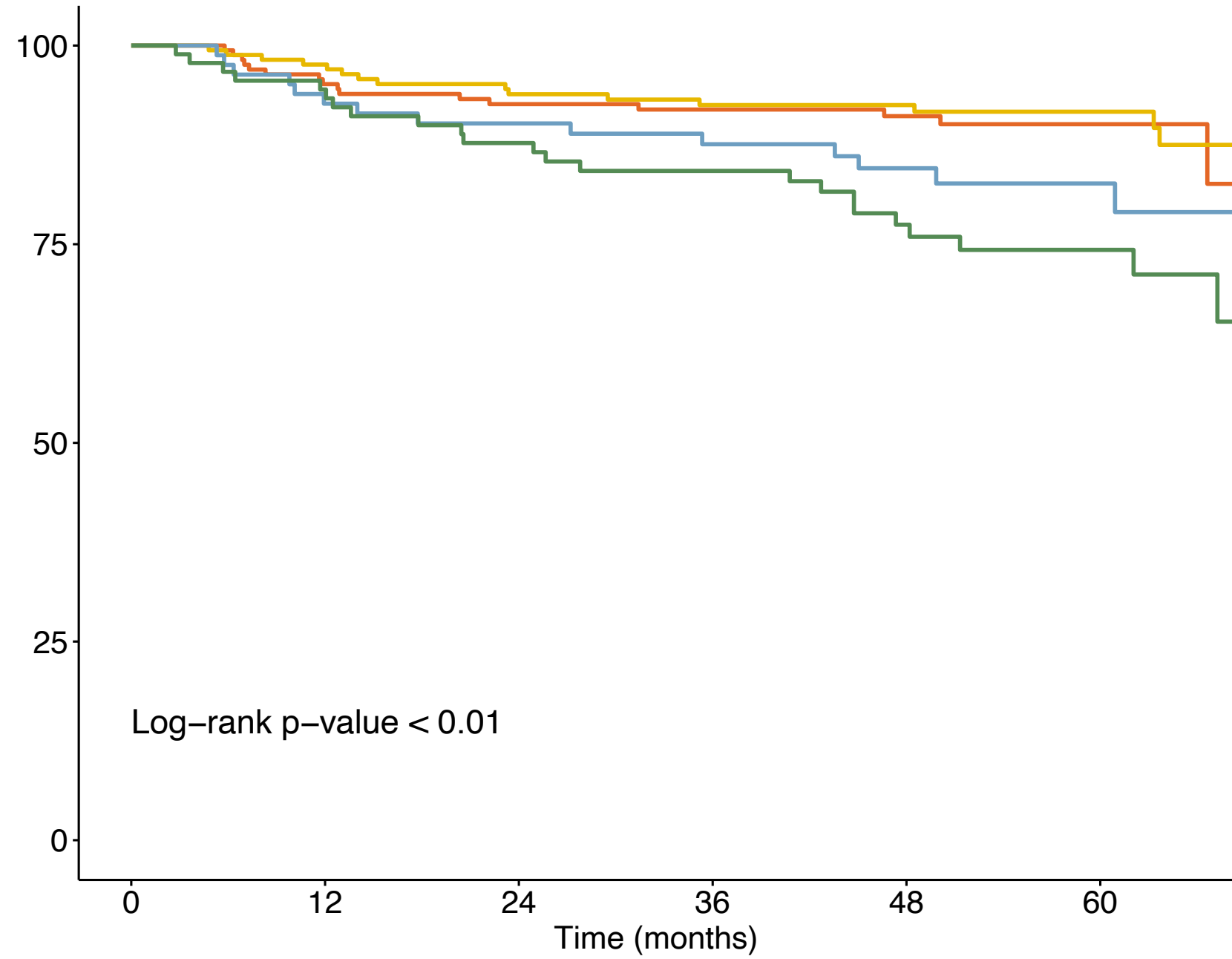
**A**

**B**

— No RCC-type symptoms      — RCC related local only  
— Non-RCC related local ± systemic      — RCC related systemic +/- local

— No RCC-type symptoms      — RCC related local only  
— Non-RCC related local ± systemic      — RCC related systemic +/- local

1  
2  
3  
4  
5  
6  
7  
8  
9  
10  
11  
12  
13  
14  
15  
16  
17  
18  
19  
20  
21  
22  
23  
24  
25  
26  
27  
28  
29  
30  
31  
32  
33  
34  
35  
36  
37  
38  
39  
40  
41  
42  
43  
44  
45  
46  
47  
48  
49  
50  
51  
52  
53  
54  
55  
56  
57  
58  
59  
60



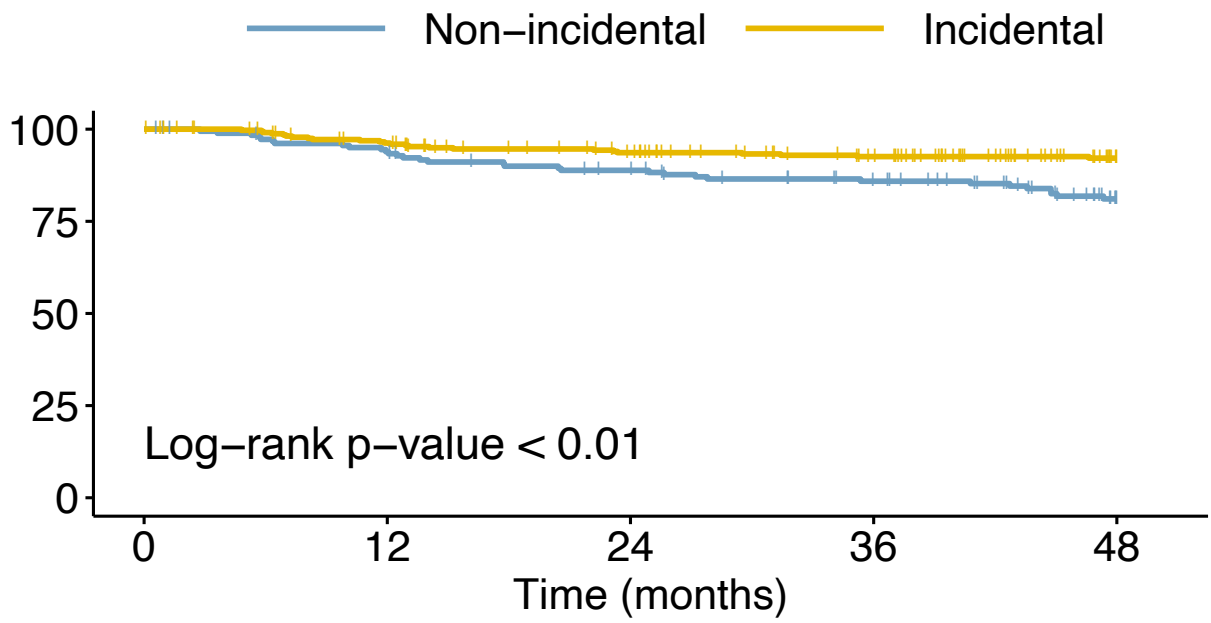
Number at risk

	0	12	24	36	48	60
<span style="color: orange;">—</span>	170	155	144	132	103	47
<span style="color: yellow;">—</span>	172	162	146	133	112	68
<span style="color: blue;">—</span>	84	76	72	66	47	26
<span style="color: green;">—</span>	93	85	76	68	52	34

Number at risk

	0	12	24	36	48	60
<span style="color: orange;">—</span>	182	172	160	143	111	51
<span style="color: yellow;">—</span>	181	172	156	142	116	72
<span style="color: blue;">—</span>	94	89	81	75	55	29
<span style="color: green;">—</span>	123	104	92	83	65	38

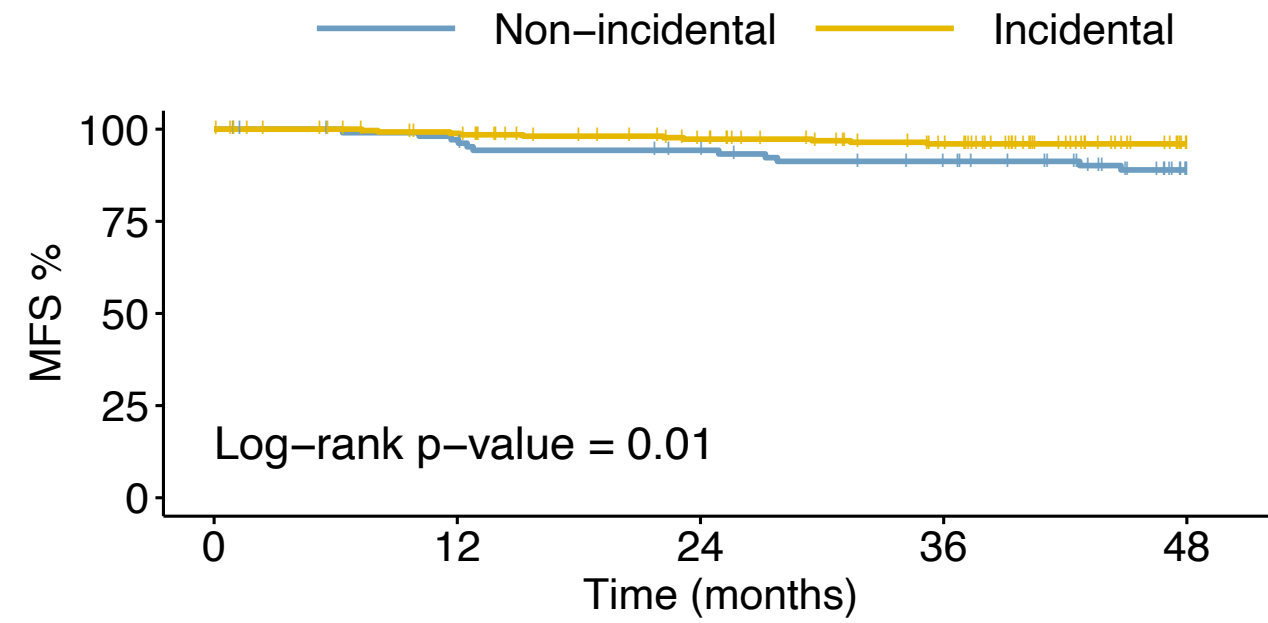
### A All patients



Number at risk

NI	185	169	155	140	103
I	329	304	279	255	209
	0	12	24	36	48

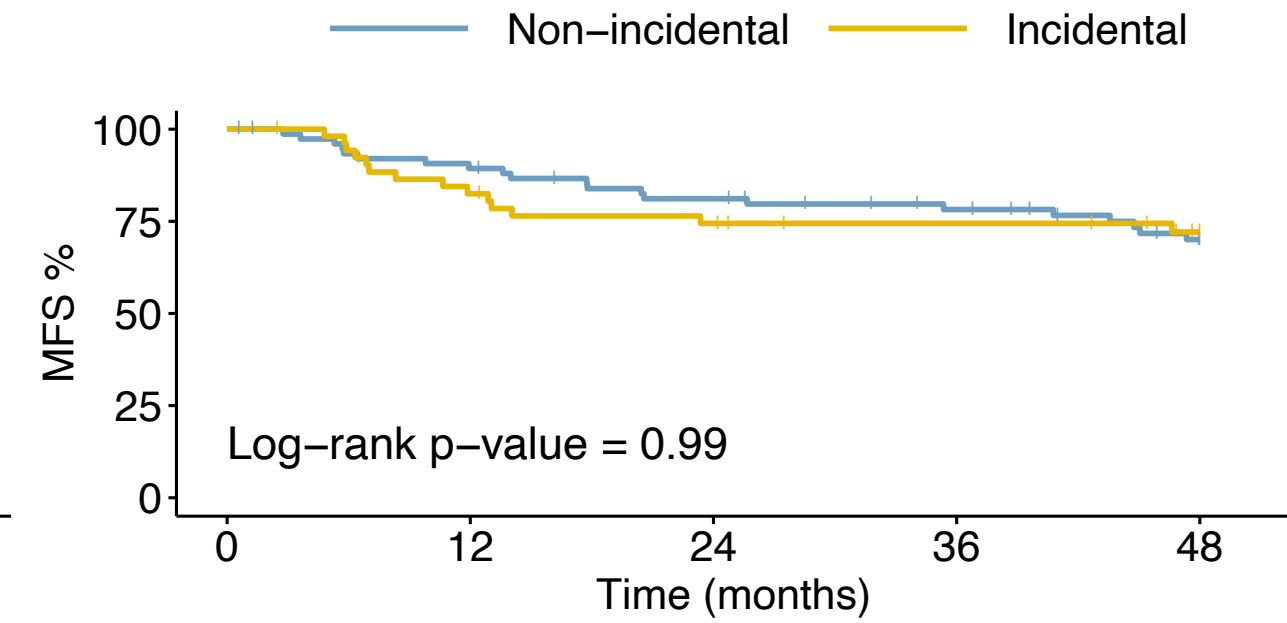
### B Stage I/II patients



Number at risk

NI	108	102	96	88	63
I	274	260	240	220	179
	0	12	24	36	48

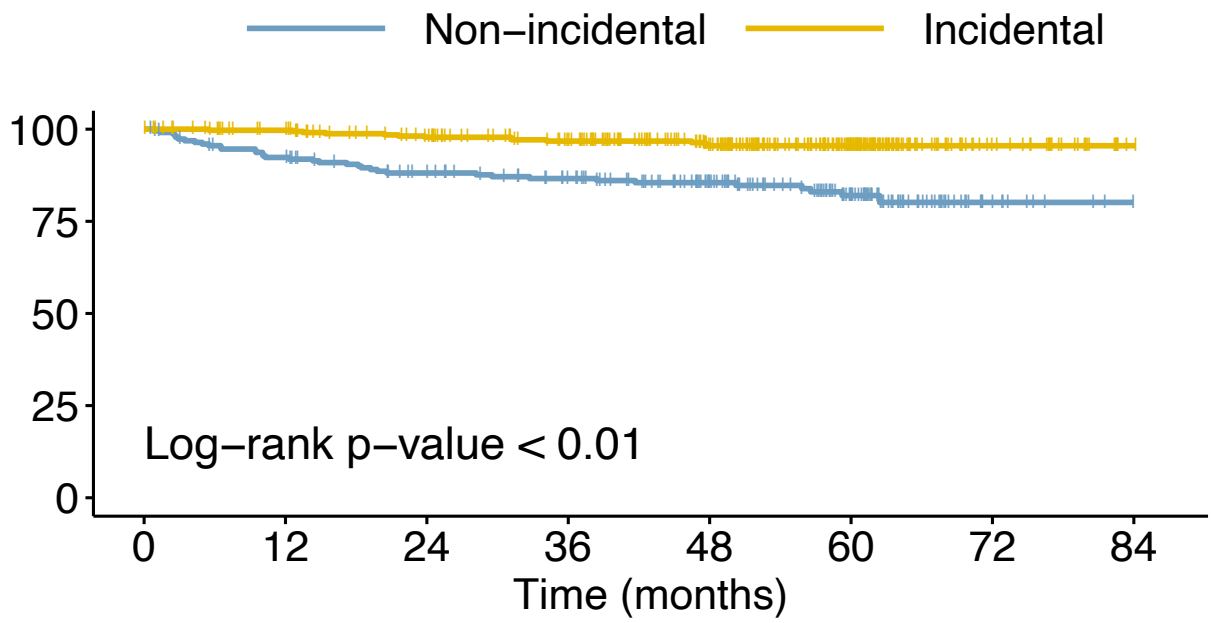
### C Stage III patients



Number at risk

NI	77	67	59	52	40
I	53	42	37	34	29
	0	12	24	36	48

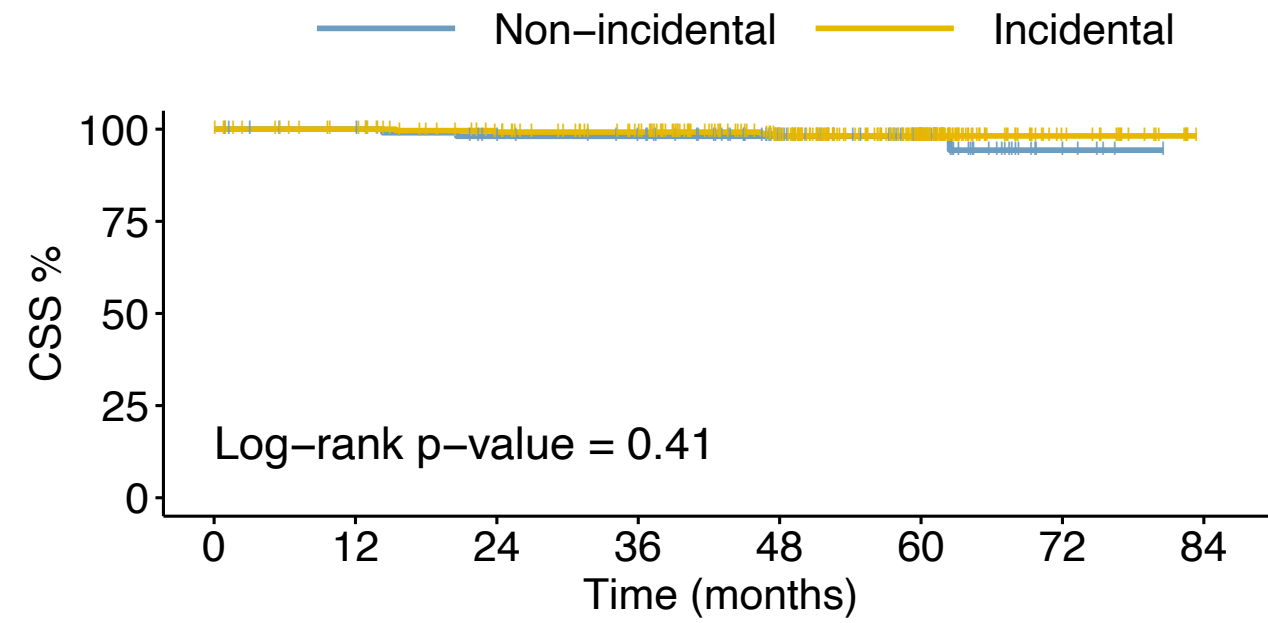
### D All patients



Number at risk

NI	227	203	182	165	125	70	10	0
I	345	327	301	274	220	120	27	1
	0	12	24	36	48	60	72	84

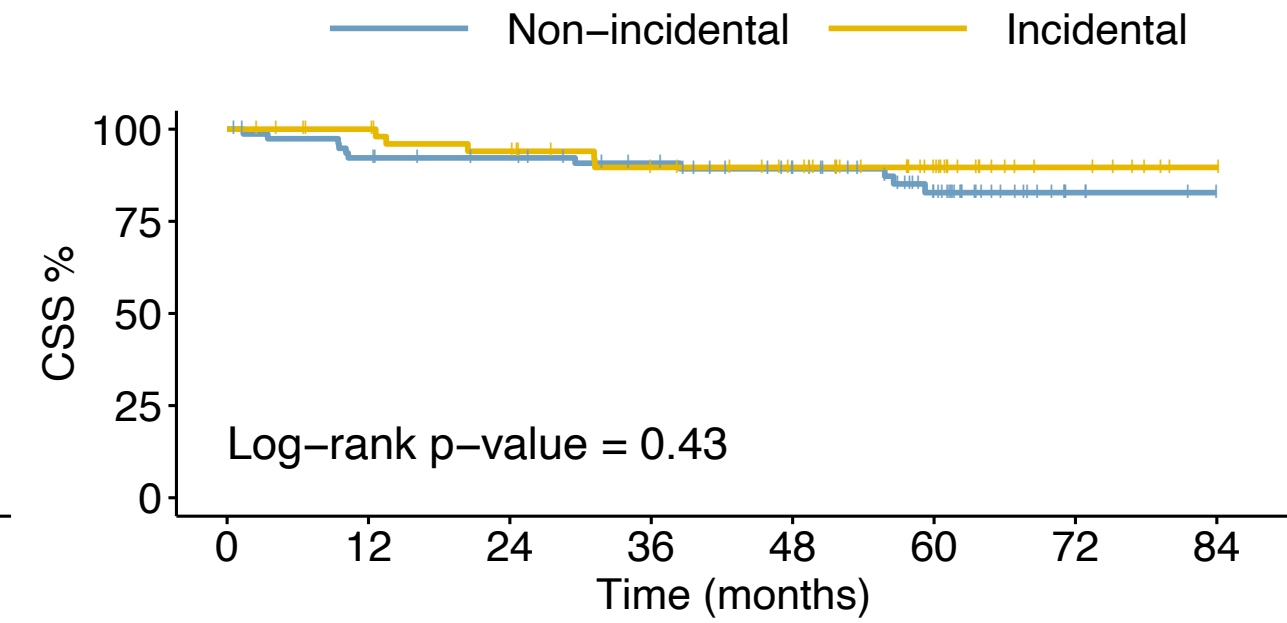
### E Stage I/II patients



Number at risk

NI	110	106	99	94	68	40	6	0
I	277	266	247	229	182	97	20	0
	0	12	24	36	48	60	72	84

### F Stage III patients



Number at risk

NI	79	71	67	61	51	29	4	0
I	56	52	47	40	35	21	7	1
	0	12	24	36	48	60	72	84

**Supplementary Table 1. Study recruitment by centre**

Centre ID	Total patients recruited n (% of total)	Recruitment period (months)*	Recruitment rate (pt/mo)
50	255 (36.1)	35	7.3
69	103 (14.6)	19	5.4
221	75 (10.6)	28	2.7
361	72 (10.3)	23	3.1
15	62 (8.8)	21	2.9
39	44 (6.2)	25	1.8
153	33 (4.7)	15	2.2
352	27 (3.8)	25	1.1
537	13 (1.8)	12	1.1
132	13 (1.8)	15	0.9
131	9 (1.3)	11	0.8

First patient registered July 2011; Last patient registered June 2014

\* recruitment times vary based on the fact that centres opened to recruitment at different times

## Supplementary Table 2. Comparison of current study patient characteristics with other RCC populations

Characteristic	Current Cohort (n=608)	UK RCC population data	US RCC population data n=104,000 Saad et al. 2019 <sup>d</sup>	Global RCC Study n=4288 (69.2% European cases) Laguna et al. 2014 <sup>e</sup>
Age (years) median (range)	63.5 (29-92)	69 <sup>a</sup>	<65 (52%) >65 (48%)	62 (18-92)
Sex (M:F) (%)	65:35	63:37 <sup>b</sup>	64:36	64:36
pT stage n (%)				
1	341 (57)	-	-	2954 (68)
2	78 (13)	-	-	553 (13)
3	172 (29)	-	-	617 (14)
4	4 (1)	-	-	32 (1)
Missing	1 (0)	-	-	195 (4)
TNM Stage n (%)				
I	341 (56)	4005 (43) <sup>c</sup>	68094 (65.1)	-
II	70 (12)	677 (7)	(Combined with I)	-
III	142 (23)	1560 (17)	16480 (15.8)	-
IV	55 (9)	1834 (20)	16513 (15.8)	299 (7)
Missing	0 (0)	1222 (13)	-	-
Tumour Type n (%)				
Clear cell	480 (79)	-	* 46818 (72.0)	2424 (75.9)
Papillary	60 (10)	-	8730 (13.4)	435 (13.6)
Chromophobe	46 (8)	-	4127 (6.3)	247 (7.8)
Other RCC	21 (3)	-	5354 (8.2)	87 (2.7)

<sup>a</sup> Shephard E et al. Clinical features of kidney cancer in primary care: a case-control study using primary care records. *Br J Gen Pract* 2013;**63**:e250-5. n=3149 UK cases

<sup>b</sup> Cancer Research UK. <https://www.cancerresearchuk.org/health-professional/cancer-statistics-for-the-uk>. 2016

<sup>c</sup> [http://ncin.org.uk/publications/survival\\_by\\_stage](http://ncin.org.uk/publications/survival_by_stage). 2017.

<sup>d</sup> Saad et al. Trends in Renal-Cell Carcinoma Incidence and Mortality in the United States in the Last 2 Decades: A SEER-Based Study. *Clin Genitourinary Cancer*. 2019;**17**:46-57

\* amongst 62.2% of cases with known tumour type

<sup>e</sup> Laguna MP, Algaba F, Cadeddu J *et al*. Current patterns of presentation and treatment of renal masses: a clinical research office of the endourological society prospective study. *J Endourol* 2014;**28**:861-70.

Prospective epidemiological, clinical and pathological data on consecutive patients with renal masses treated during a 1-year period in 98 centres worldwide

STROBE Statement—Checklist of items that should be included in reports of *cohort studies*

	Item No	Recommendation	Page No
<b>Title and abstract</b>	1	(a) Indicate the study's design with a commonly used term in the title or the abstract (b) Provide in the abstract an informative and balanced summary of what was done and what was found	1, 2
<b>Introduction</b>			
Background/rationale	2	Explain the scientific background and rationale for the investigation being reported	4
Objectives	3	State specific objectives, including any prespecified hypotheses	4
<b>Methods</b>			
Study design	4	Present key elements of study design early in the paper	5
Setting	5	Describe the setting, locations, and relevant dates, including periods of recruitment, exposure, follow-up, and data collection	7
Participants	6	(a) Give the eligibility criteria, and the sources and methods of selection of participants. Describe methods of follow-up (b) For matched studies, give matching criteria and number of exposed and unexposed	Referenced
Variables	7	Clearly define all outcomes, exposures, predictors, potential confounders, and effect modifiers. Give diagnostic criteria, if applicable	5,6
Data sources/ measurement	8*	For each variable of interest, give sources of data and details of methods of assessment (measurement). Describe comparability of assessment methods if there is more than one group	5
Bias	9	Describe any efforts to address potential sources of bias	-
Study size	10	Explain how the study size was arrived at	7
Quantitative variables	11	Explain how quantitative variables were handled in the analyses. If applicable, describe which groupings were chosen and why	7-9
Statistical methods	12	(a) Describe all statistical methods, including those used to control for confounding (b) Describe any methods used to examine subgroups and interactions (c) Explain how missing data were addressed (d) If applicable, explain how loss to follow-up was addressed (e) Describe any sensitivity analyses	6 and table legends
<b>Results</b>			
Participants	13*	(a) Report numbers of individuals at each stage of study—eg numbers potentially eligible, examined for eligibility, confirmed eligible, included in the study, completing follow-up, and analysed (b) Give reasons for non-participation at each stage (c) Consider use of a flow diagram	7
Descriptive data	14*	(a) Give characteristics of study participants (eg demographic, clinical, social) and information on exposures and potential confounders (b) Indicate number of participants with missing data for each variable of interest (c) Summarise follow-up time (eg, average and total amount)	Tables P7
Outcome data	15*	Report numbers of outcome events or summary measures over time	Figures

1 2 3 4 5 6 7 8	Main results	16	(a) Give unadjusted estimates and, if applicable, confounder-adjusted estimates and their precision (eg, 95% confidence interval). Make clear which confounders were adjusted for and why they were included (b) Report category boundaries when continuous variables were categorized (c) If relevant, consider translating estimates of relative risk into absolute risk for a meaningful time period	NA
9 10 11	Other analyses	17	Report other analyses done—eg analyses of subgroups and interactions, and sensitivity analyses	-
12	<b>Discussion</b>			
13 14	Key results	18	Summarise key results with reference to study objectives	10-14
15 16 17	Limitations	19	Discuss limitations of the study, taking into account sources of potential bias or imprecision. Discuss both direction and magnitude of any potential bias	3 10-14
18 19	Interpretation	20	Give a cautious overall interpretation of results considering objectives, limitations, multiplicity of analyses, results from similar studies, and other relevant evidence	10-14
20 21	Generalisability	21	Discuss the generalisability (external validity) of the study results	10-14
22	<b>Other information</b>			
23 24 25 26	Funding	22	Give the source of funding and the role of the funders for the present study and, if applicable, for the original study on which the present article is based	14

\*Give information separately for exposed and unexposed groups.

**Note:** An Explanation and Elaboration article discusses each checklist item and gives methodological background and published examples of transparent reporting. The STROBE checklist is best used in conjunction with this article (freely available on the Web sites of PLoS Medicine at <http://www.plosmedicine.org/>, Annals of Internal Medicine at <http://www.annals.org/>, and Epidemiology at <http://www.epidem.com/>). Information on the STROBE Initiative is available at <http://www.strobe-statement.org>.