



TEP / Westside Studio

Draft Final Report



Agenda

Focus Area, Context, Opportunities

Planning Process

Analysis Results

Policy Ideas

- Housing and Vacancy

- Jobs and Economy

Program Ideas

- Health and Food

- Education and Training

- Arts and Culture

Infrastructure Ideas

- TEP Site Design

- Transportation Connections





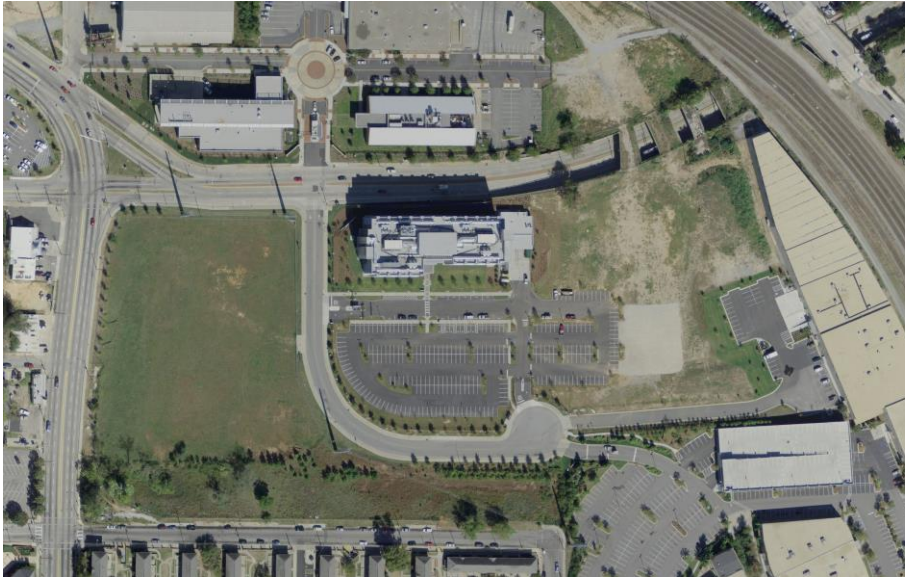
Focus Area + Context + Opportunities



Focus Area

Technology Enterprise Park Expansion

“Atlanta’s Home for Biobusiness” → Could it be MORE?



Study Context

Many Existing Plans

- Limited implementation

Funding Available

- Atlanta Infrastructure Bonds

- Westside Futures Fund

- Westside Tax Allocation District

- Proctor Creek Grants

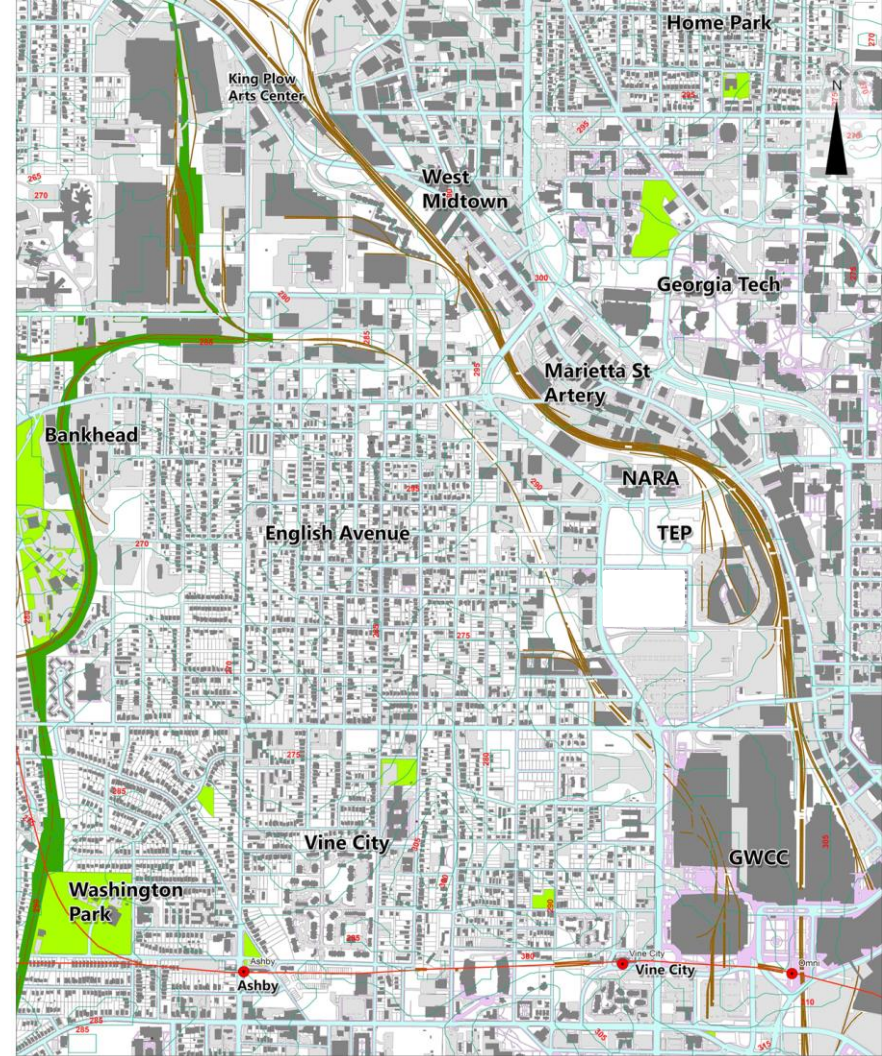
- Brownfields Assessments

Shift Toward Implementation

- Improve access and quality of life

- Minimize displacement

- Preserve historic character



Opportunities

Georgia Tech as anchor institution

- Community benefits

- Economic development

- Education and workforce training

- Local employment and procurement

- Sustainable infrastructure

Technology Enterprise Park as catalyst site

- Enhance local transportation system

- Increase access to jobs and resources

- Provide more connectivity and open space

- Support implementation of community plans

- Use stormwater best management practices



Tech Square



Technology Enterprise Park

Student Studio

Student Group Project

Guided by Professor Mike Dobbins

5 City and Regional Planning Students

1 Semester “Capstone” Course

Sponsored by TEP Team

Studio as Pre-cursor to Feasibility Study

Research and Data Analysis

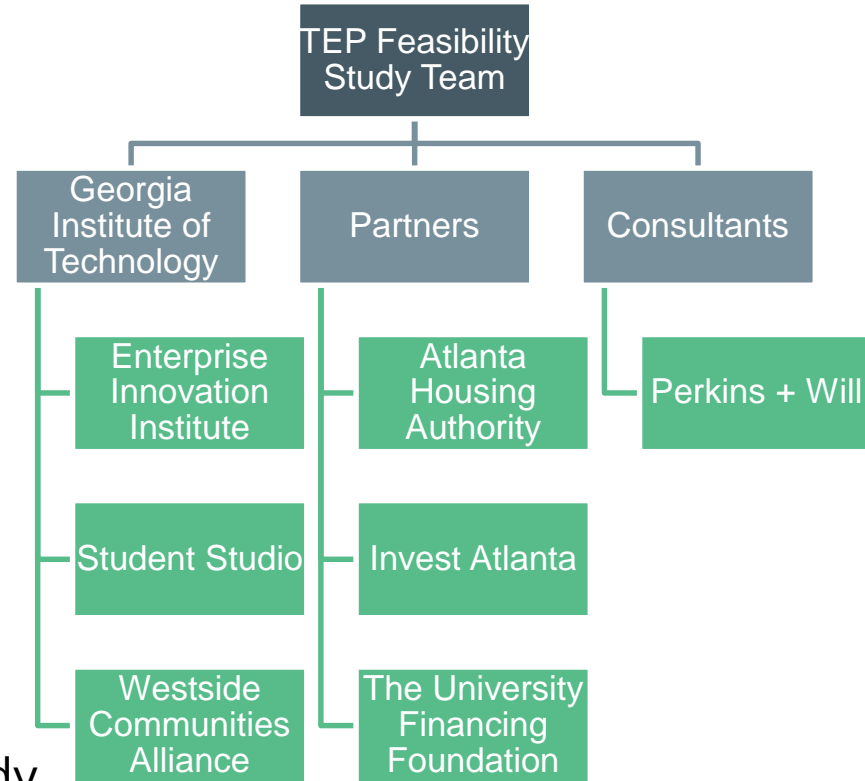
Ideas Generation

Stakeholder and Community Input

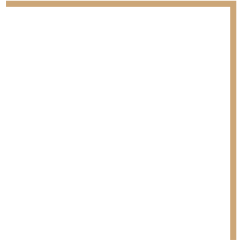
Recommendations

Technology Enterprise Park Feasibility Study

Larger Effort with Entire Team and Professional Consultants

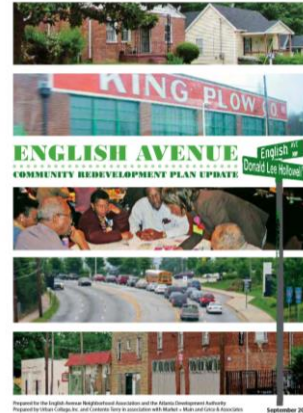
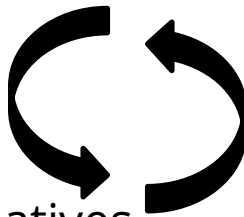


Planning Process



Planning Process

- Review of existing plans
- Data gathering and analysis
- SWOT analysis
- Stakeholder meetings
- Brainstorming sessions
- Site visits and documentation
- Digitizing past plans
- Creating alternative concepts
- Gather community feedback
- Recommendations and report
- Visualize recommended alternatives





Existing Studies + GIS Analysis



Transportation

Existing Infrastructure

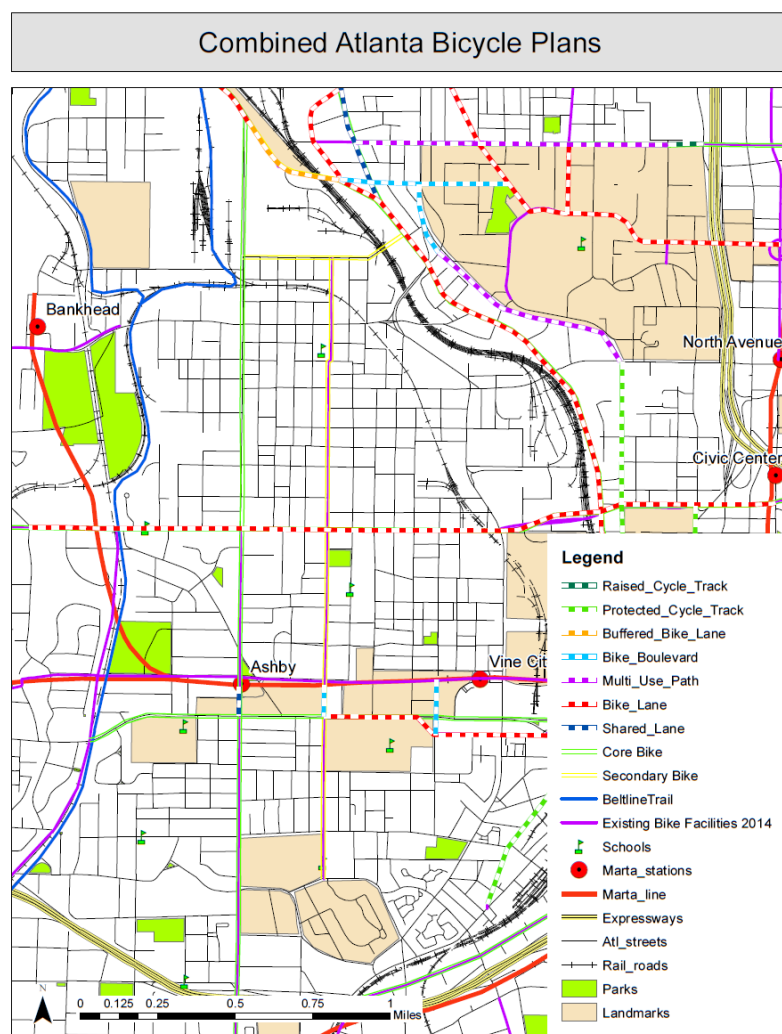
- ★ Pedestrian
- ★ Bicycle
- ★ Transit
- ★ Auto
- ★ Freight

Past Studies

- ★ City of Atlanta + ARC plans
- ★ GT Campus plans
- ★ BeltLine + Streetcar plans

GIS Analysis

- ★ Mode share
- ★ Safety statistics
- ★ Transit demand



Community Development

Existing Infrastructure

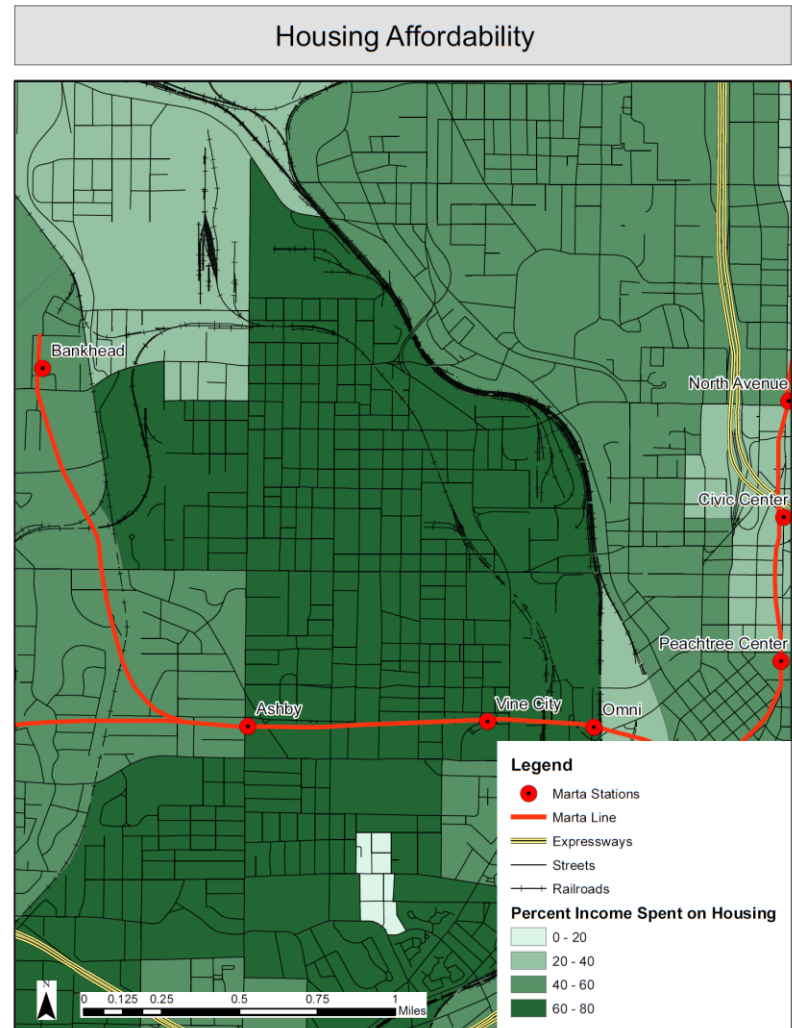
- ★ Assets
- ★ Education
- ★ Employment
- ★ Housing
- ★ Services

Past Studies

- ★ City of Atlanta + ARC plans
- ★ Invest Atlanta studies
- ★ EcoDistrict studies

GIS Analysis

- ★ Housing affordability
- ★ Population change
- ★ Employment industries



Policy Ideas



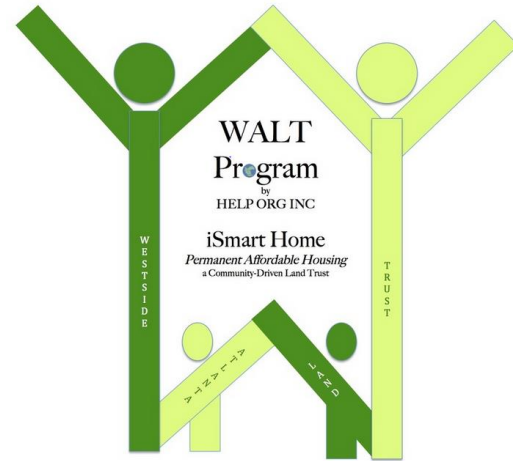
Policy Ideas to Address Housing and Vacancy

Support sustainable community development while:

- ★ Improving Permanently Affordable Housing Access
- ★ Minimizing Displacement
- ★ Reducing Vacancy and Blight
- ★ Increasing Homeownership

Policy alternatives:

- ★ Community-driven Land Trusts
- ★ Cooperative Housing
- ★ Deed Restrictions
- ★ Inclusionary Zoning
- ★ Tax Assessment Policies
- ★ Homeowner Assistance and Education
- ★ Fair Lending and Insurance Policies

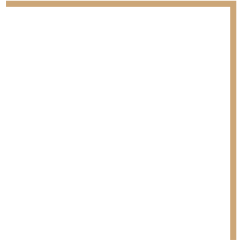


Policy Ideas to Address Jobs and Economy

Support Development of a Just and Sustainable Economy:

- ★ Pro-Entrepreneurship and Small Business Policies
- ★ Increasing the Minimum Wage
- ★ Incentives for Businesses to Locate in ED Priority Areas
- ★ Local Hire and Procurement Policies
- ★ Increased access to capital for small businesses
 - ★ Local banks
 - ★ Small Business Lending Products
- ★ Hiring incentives + enforcement of non-discrimination policies for:
 - ★ Minorities
 - ★ Seniors
 - ★ Young adults
 - ★ People with disabilities
 - ★ Formerly incarcerated individuals

Program Ideas



Program Ideas for Health

Provide opportunities for play, fitness, and recreation through expansion of public facilities.

- ★ Parks
- ★ Open spaces
- ★ Paths
- ★ Soccer
- ★ Football
- ★ Tennis
- ★ Basketball
- ★ Volleyball
- ★ Skate park
- ★ Gym



Courts and Fields



Old Fourth Ward Park and Skatepark



Outdoor Fitness



Program Ideas for Food

Provide access to healthy food for residents, employees, and visitors to the study area.

- ★ Restaurants
- ★ Grocery stores
- ★ Bodegas
- ★ Markets
- ★ Food Trucks
- ★ Urban Agriculture
- ★ Shared-use Commercial Kitchen



Georgia Tech Farmers Market



Arkfab Aquaponics at Wheat Street Garden



Commonwealth Kitchen in Boston, MA

Program Ideas for Green Building

Promote green building practices in the focus area as a continuation of best practices on the Georgia Tech campus.

- ★ State-of-the-Art Facilities
- ★ Sustainable Design
- ★ Energy Efficiency
- ★ Green Roofs
- ★ Pervious Surfaces
- ★ Native Plants
- ★ Stormwater Management
- ★ Eco-Wastewater Treatment
- ★ Recycling and Reuse
- ★ Training for Facility Design, Construction, and Maintenance



The Suites at Spelman College



Clough Undergraduate Learning Commons (CULC) at Georgia Tech



WaterHub at Emory University



Program Ideas for Clean Energy

Use sources of clean, renewable energy to benefit community and focus area stakeholders.

- ★ Net Positive Energy Buildings
- ★ Solar Research + Manufacturing + Use
- ★ Biofuels Research + Manufacturing
- ★ Geothermal Heating + Cooling



ASHRAE Headquarters with Geothermal Heat Pump



Algae Biofuel Production (Earth Magazine)



Carbon Neutral Energy Solutions Lab at Georgia Tech



Suniva Researchers in Norcross, GA (Gwinnett Business Journal)

Program Ideas for Education and Training

Leverage Georgia Tech Education Resources to Benefit Westside Communities.

Community Classroom and Resource Center

- ★ Health and Biosciences
- ★ Green Building
- ★ Clean Energy
- ★ Horticulture
- ★ Landscaping
- ★ Arts and Design
- ★ Music Production
- ★ Computing
- ★ Business Skills
- ★ Technical Training



Summer Camp with GT College of Computing



Westside Works Training Programs

Program Ideas for Education and Training

Leverage Georgia Tech Education Resources to Benefit Westside Communities.

Partnerships with other Schools

- ★ More K-12 and Technical Programs
- ★ Expand Tutoring and Mentorship
- ★ Interactive Science Museum



Interactive Science Museum Example



Medical Lab Technician Training (Allegheny College)



InGirls Visit to Georgia Tech

Program Ideas for Arts and Culture

Foster Growth of a Rail Arts District and Cultural Centers in the Study Area

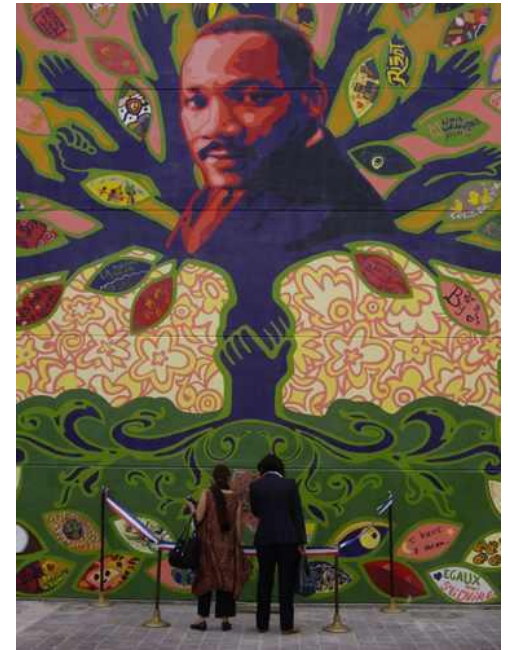
- ★ Historical celebration, preservation, and restoration
- ★ Support cultural resource creation
- ★ Public performances and art installations
- ★ More music and entertainment venues
- ★ Spaces for artists and entrepreneurs to sell goods
- ★ Vintage and second-hand stores



The Wailers at Terminal West



Frenchmen Street Artists Market in New Orleans (PPS)



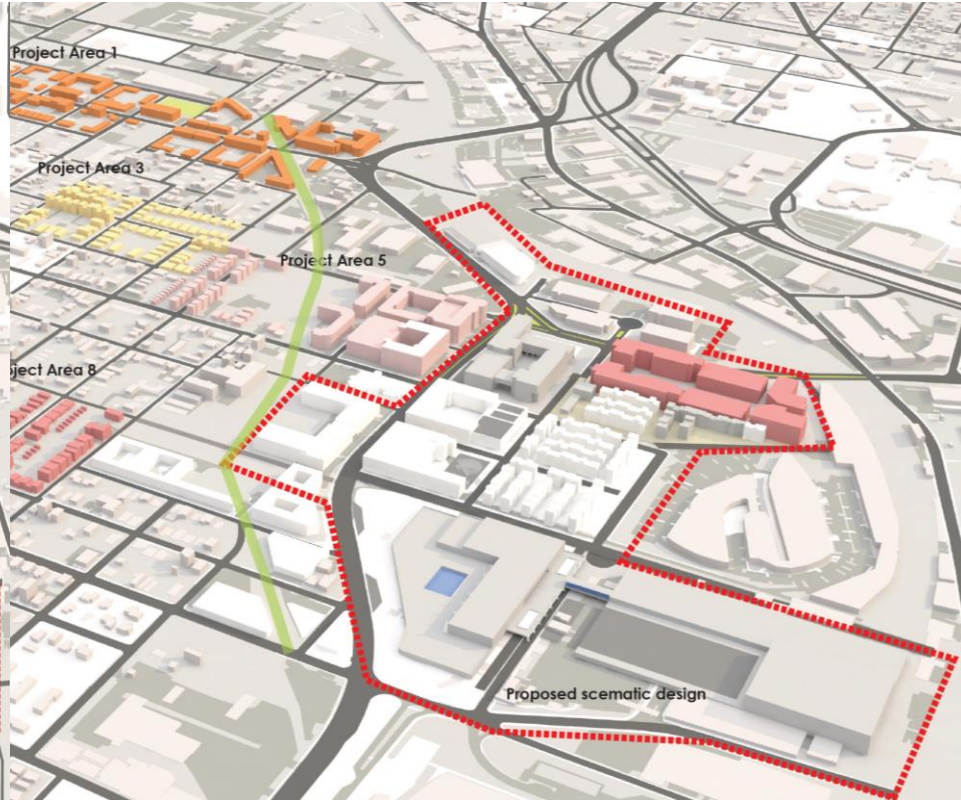
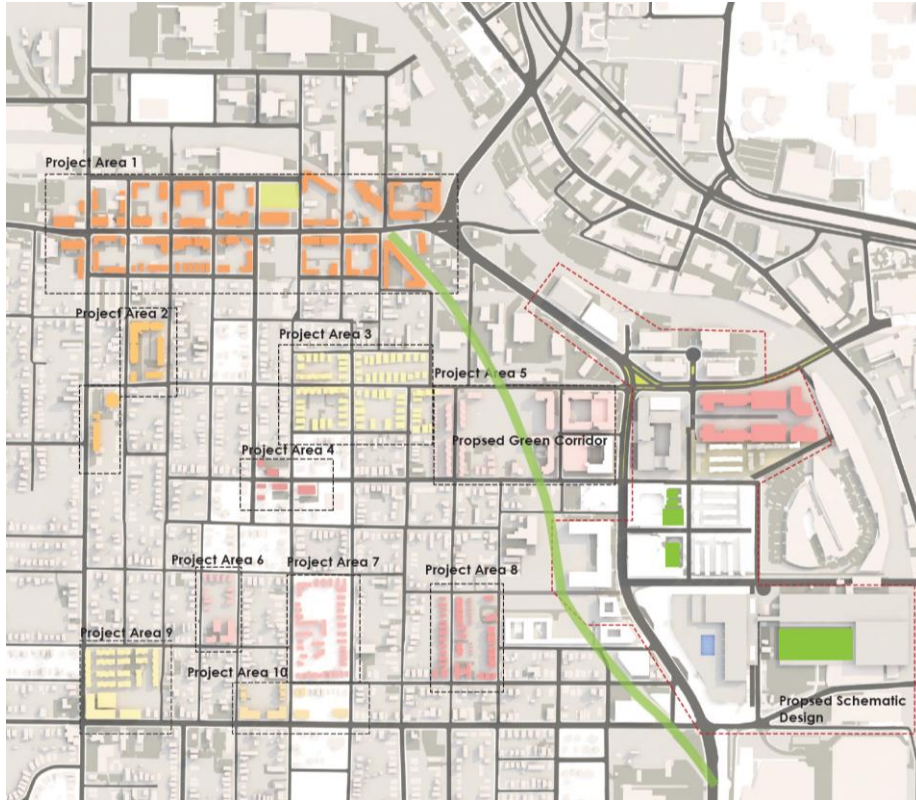
Martin Luther King Jr. Mural (DOS)



Infrastructure Ideas

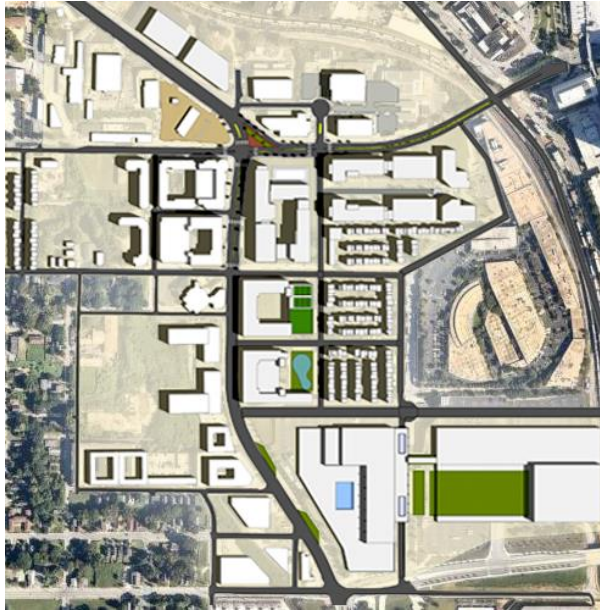


Site Design - 3D Rendering of Study Area



Full Site Design

Preferred Site Design –
Alternative 4



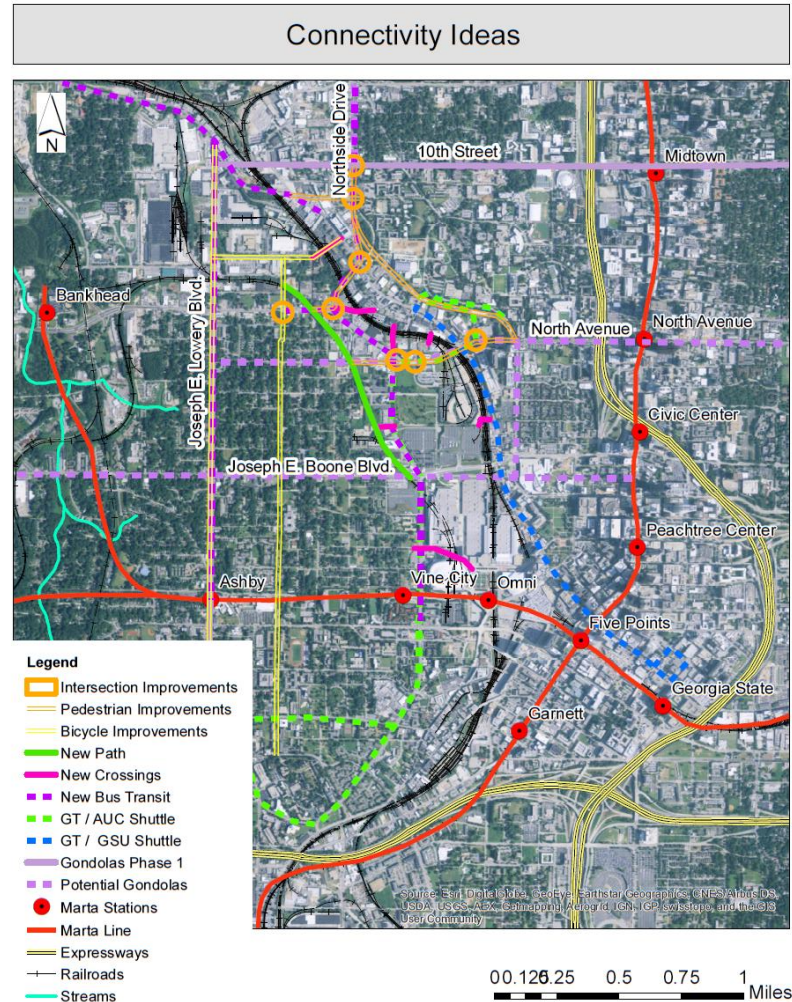
Full Site Design

Alternative 4 – Street Level Views



Infrastructure Ideas

- Pedestrian Improvements
- Bicycle Improvements
- New Crossings
- New Transit
- Intersection Safety



Bike / Ped Improvements

8th Street

Northside Drive at Freight Rail Line

Joseph E. Lowery Boulevard

Jefferson Street

James P. Brawley Drive

Tech Parkway

Multi-Use Path

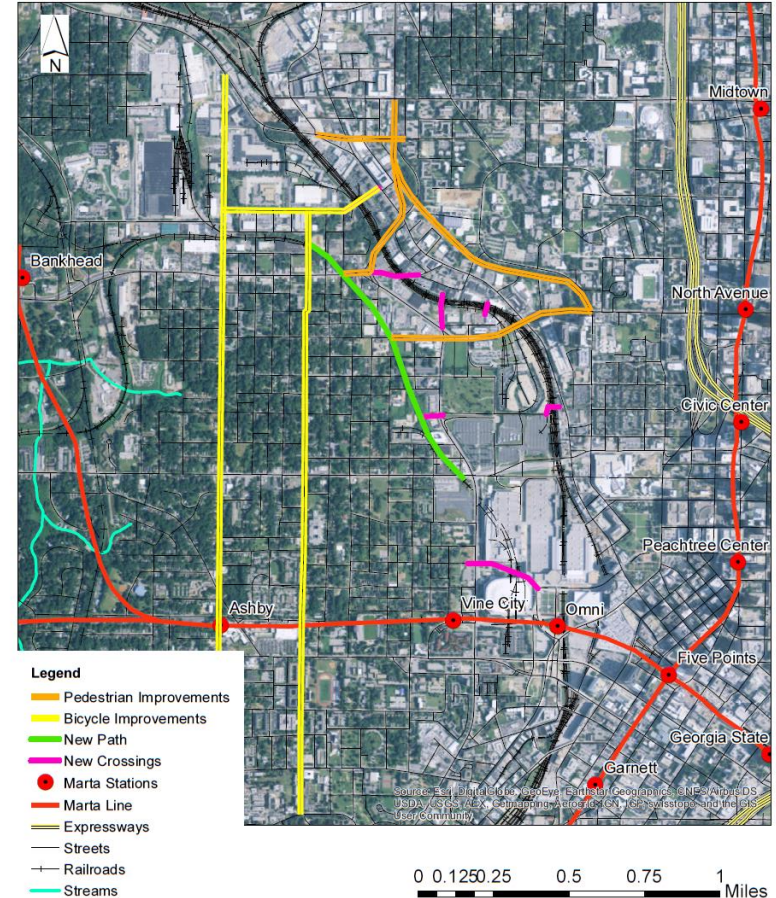
North Avenue

Path to Northside Drive

Marietta Street Underpass

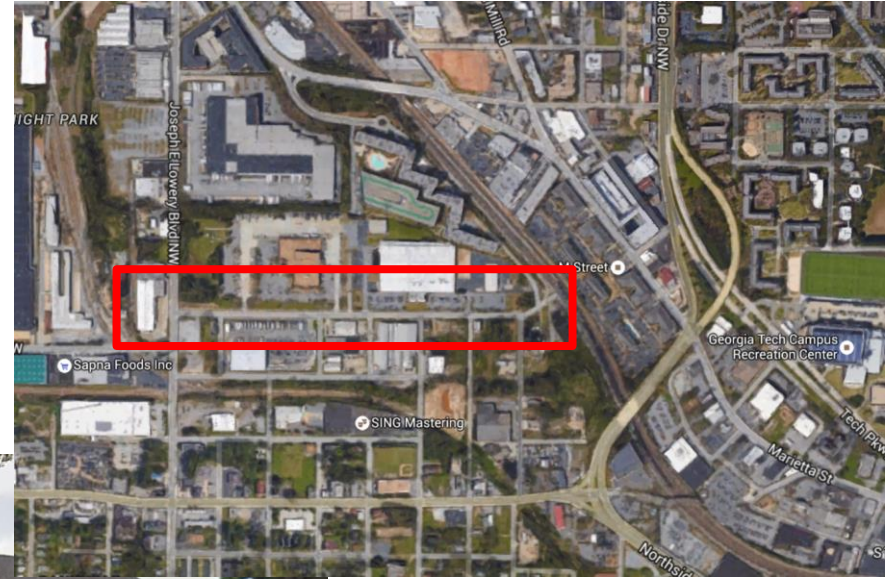
English Avenue Path

Pedestrian and Bicycle Improvement Ideas



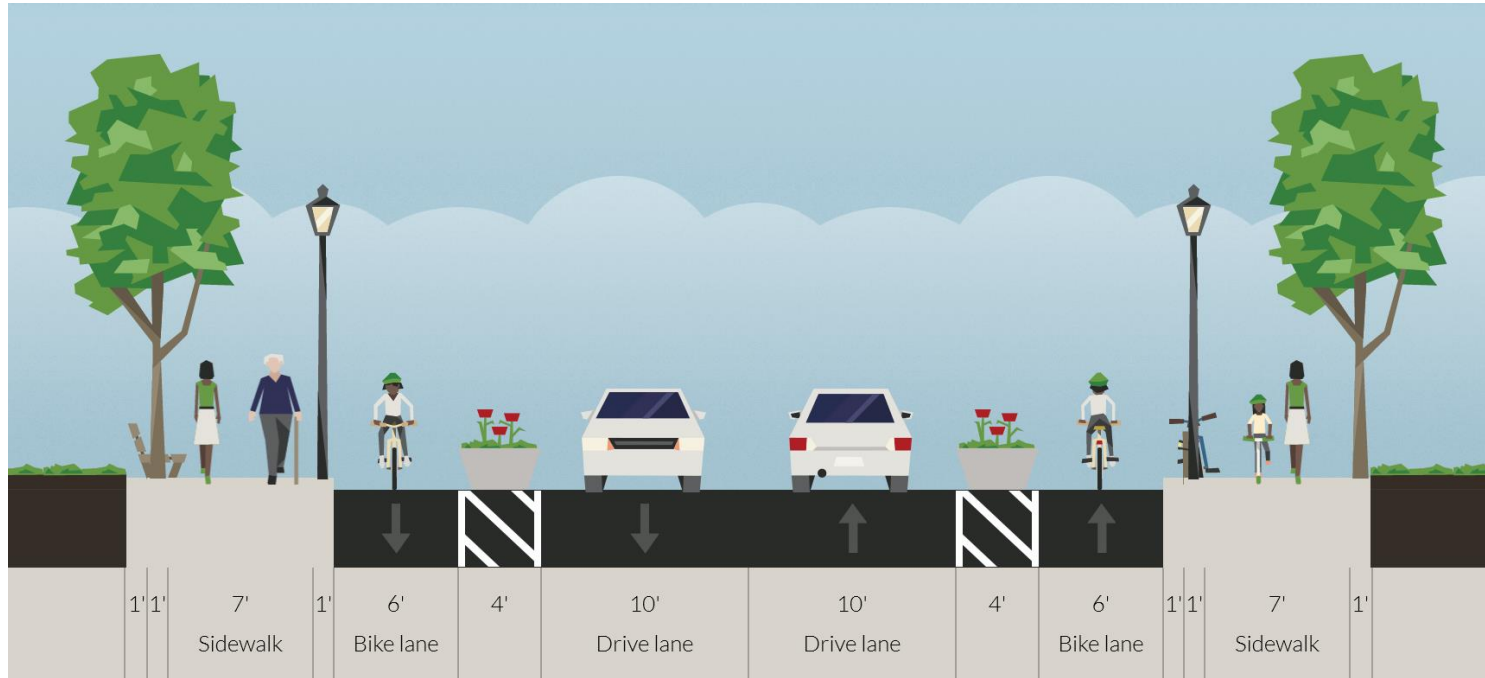
Jefferson Street

Core Bicycle Connection
Shared Street
Bike Boulevard
Buffered Bike Lanes



Jefferson Street

Alternative 3 – Buffered Bike Lanes



North Avenue Underpass

Public Art

- ★ Mural
- ★ Interactive

Sidewalk

- ★ **Widen**
- ★ **Raise**
- ★ **Protect**

Bike Infrastructure

- ★ Bike Lane
- ★ **Multi-use Path**

Transit

- ★ Enhanced Bus
- ★ Streetcar



Multi-Use Path in Tech Square (Matt Johnson)

North Avenue Underpass

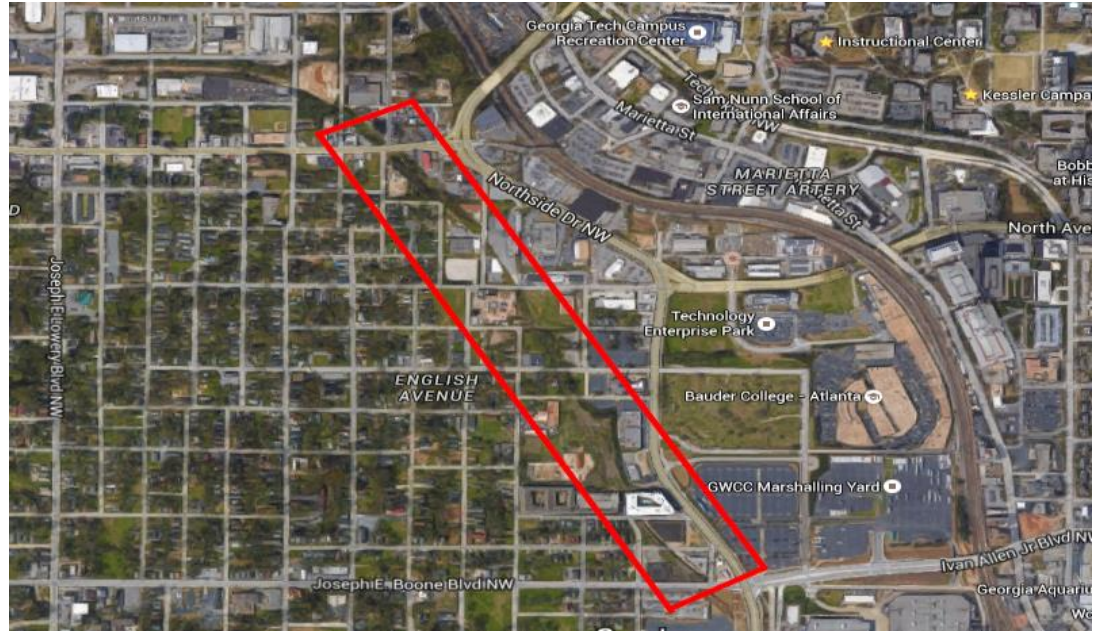
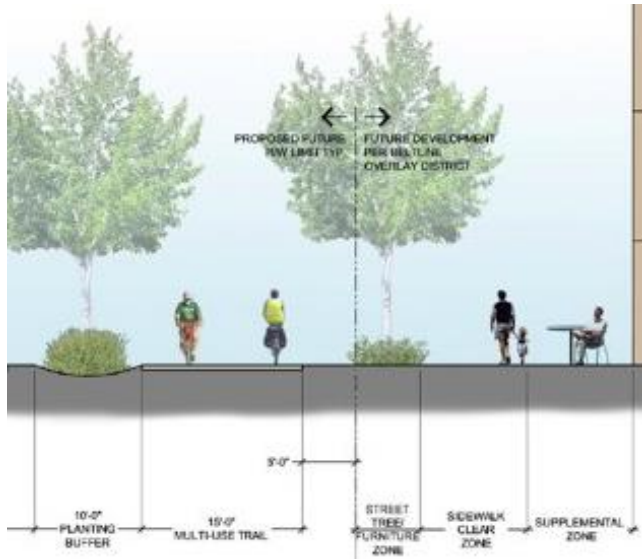
Alternative 1

- ★ Enhanced Bus
- ★ Multi-Use Path



English Avenue Path

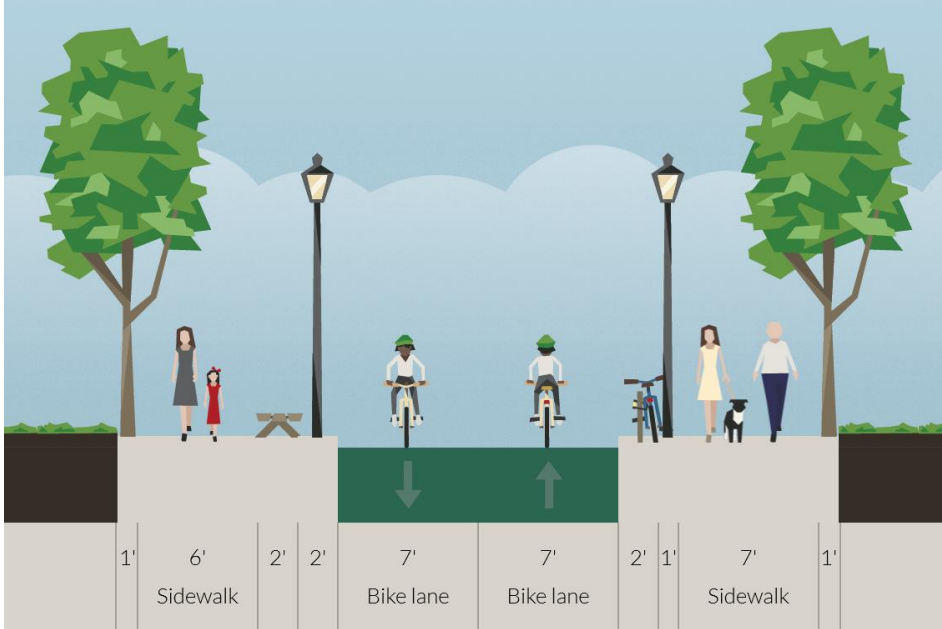
Public Linear Park
Multi-Use Path
Transition between Uses



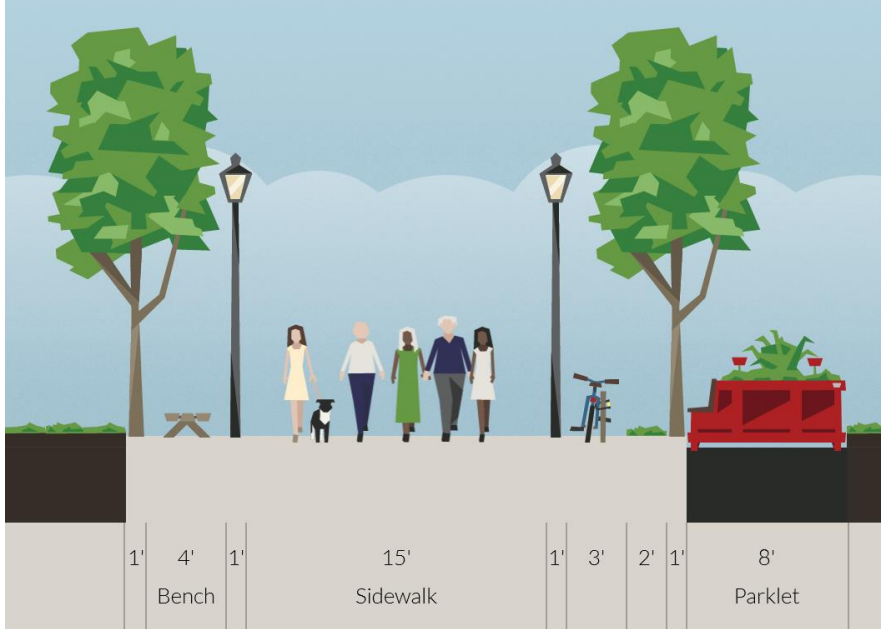
Atlanta BeltLine lies to the West

English Avenue Path

Alternative 1 – Separated



Alternative 2 – Shared



New Crossings

Jefferson Street

Bankhead Bridge

Lambert Street to Means Street

North Avenue Research Area

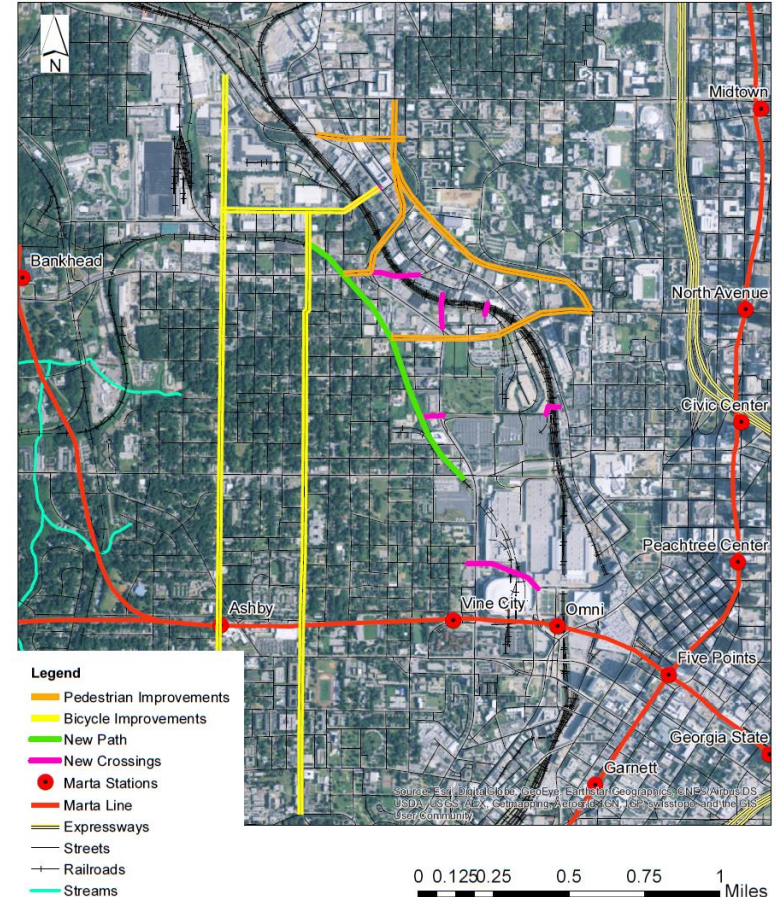
North Avenue Overpasses

Northside Drive at John Street

John Street at Freight Rail

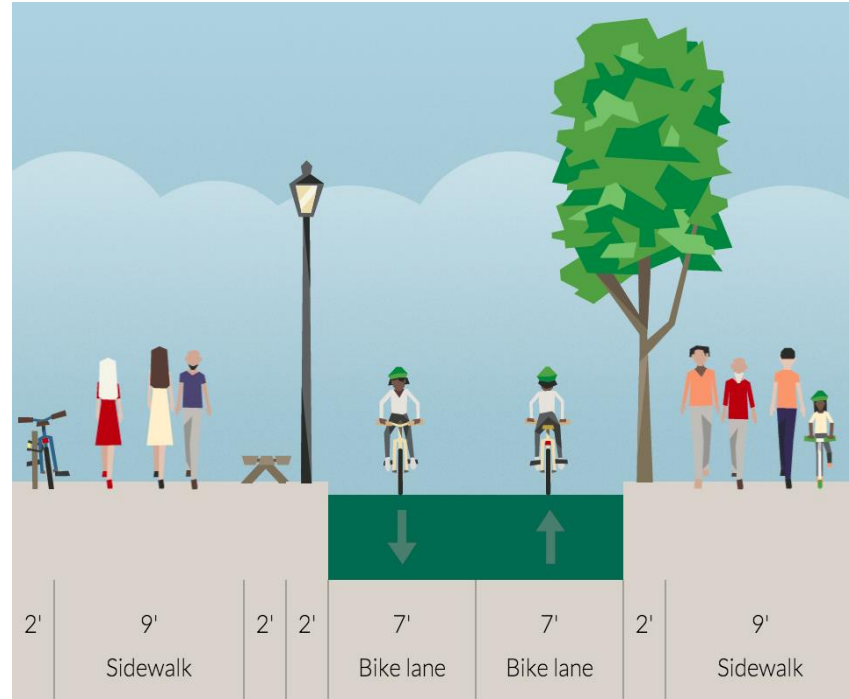
Foundry Street to International Plaza

Pedestrian and Bicycle Improvement Ideas



Bankhead Bridge Crossing

Donald Lee Hollowell Parkway to Bankhead Avenue
Bike and Pedestrian Bridge



Lambert Street Crossing

Lambert Street to Means Street
Underground Tunnel
At-Grade Crossing
Bike and Pedestrian Bridge



New Transit

Marietta Street

10th Street

North Avenue

Northside Drive

Luckie Street

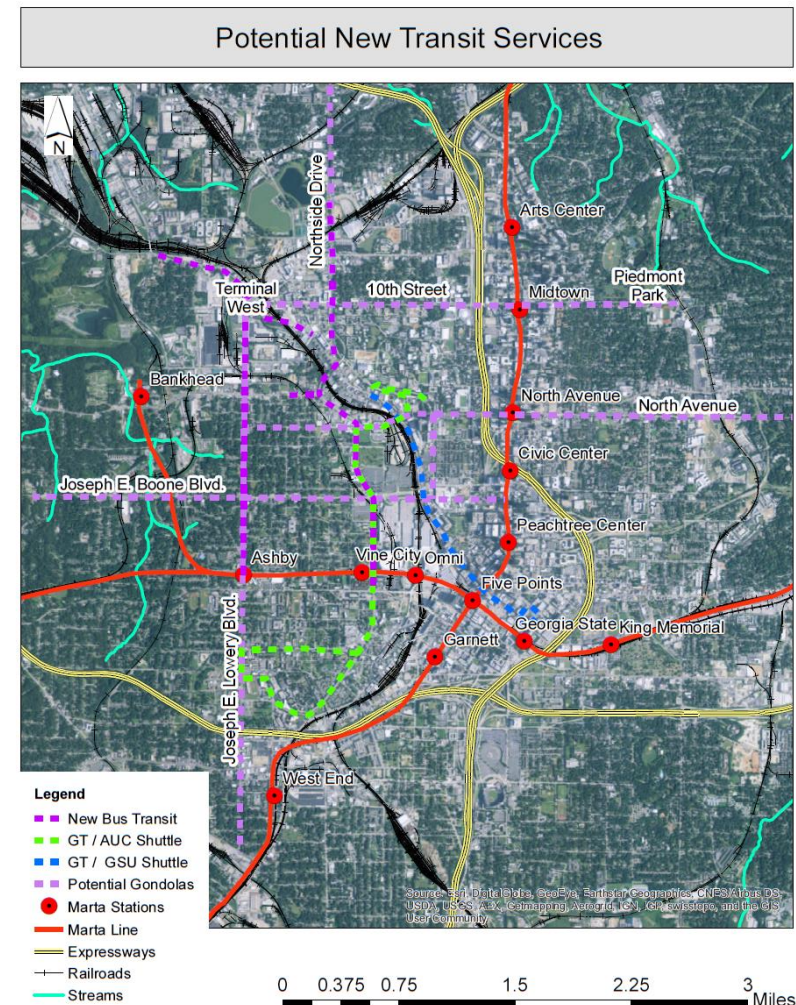
Joseph E. Lowery Boulevard

Donald Lee Hollowell Parkway

Joseph E. Boone Boulevard

Georgia Tech / AUC / GSU Shuttle(s)

Westside Community Shuttle(s)



Buses + Shuttles

Marietta Street

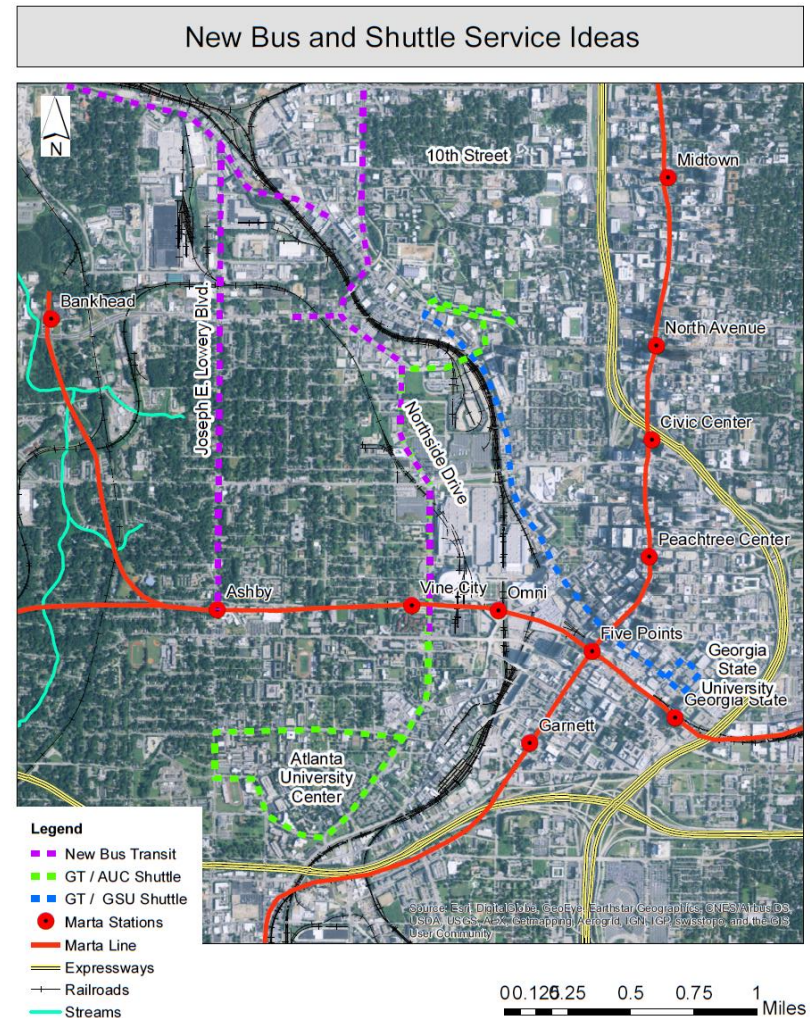
Northside Drive

Joseph E. Lowery Boulevard

Donald Lee Hollowell Parkway

Georgia Tech / AUC / GSU Shuttle(s)

Westside Community Shuttle(s)



Gondolas

Northside Drive

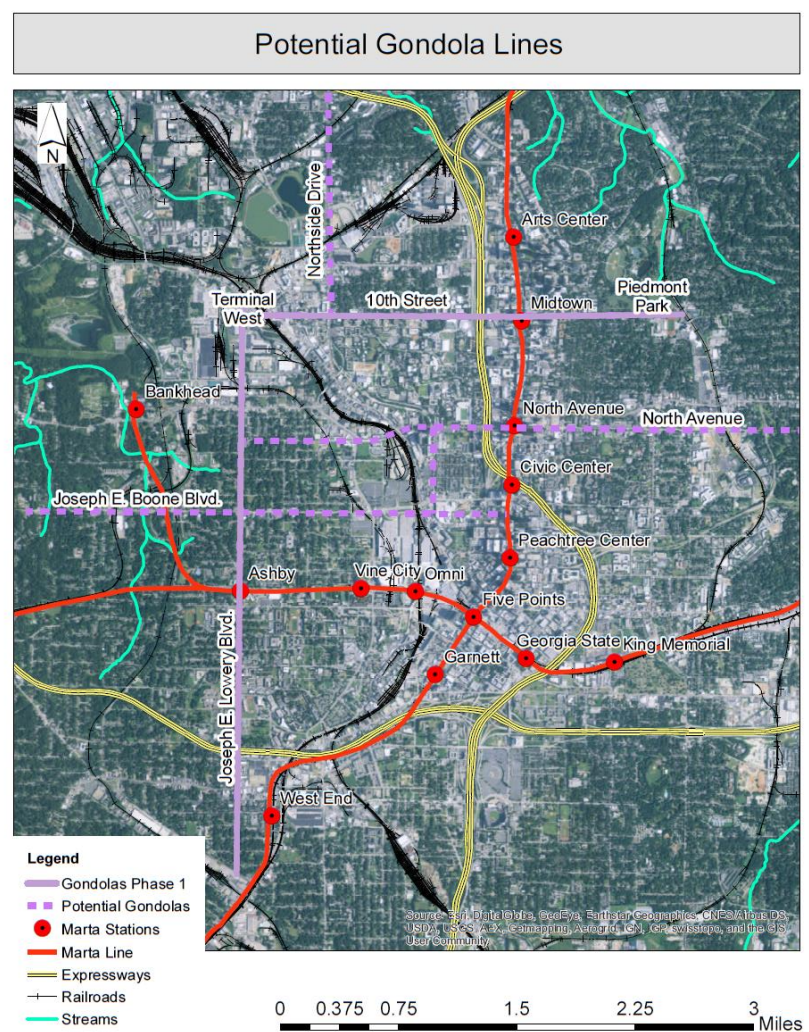
10th Street

Joseph E. Lowery Boulevard

North Avenue

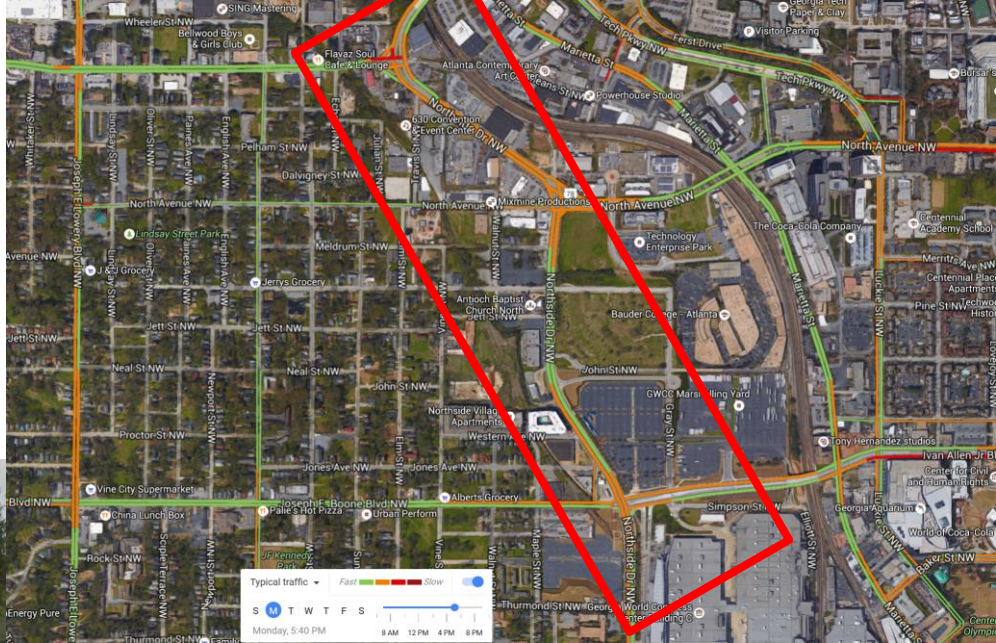
Luckie Street

Joseph E. Boone Boulevard



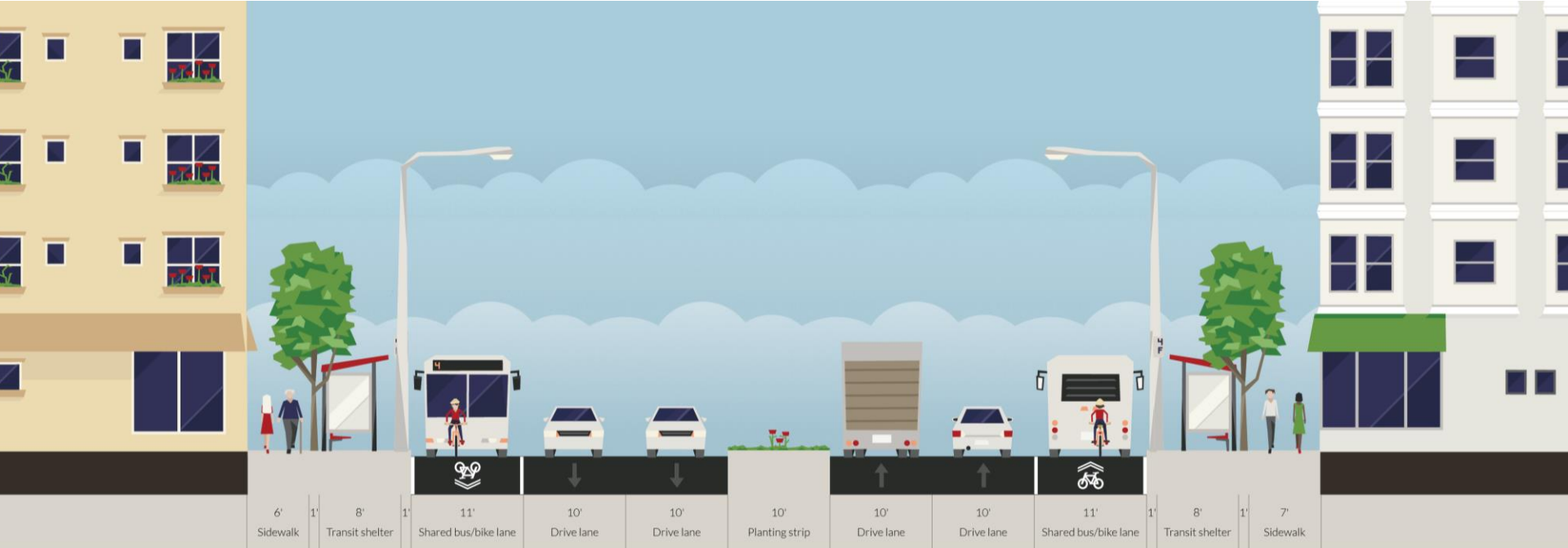
Northside Drive

Regular / Enhanced Bus
Bus / Bike Lane
Bus Rapid Transit
On-Street Parking



Northside Drive

Alternative 5 – Bus and Bike Lanes with Median



Northside Drive

Alternative 6 – Median, Wider Sidewalks, and On-Street Parking

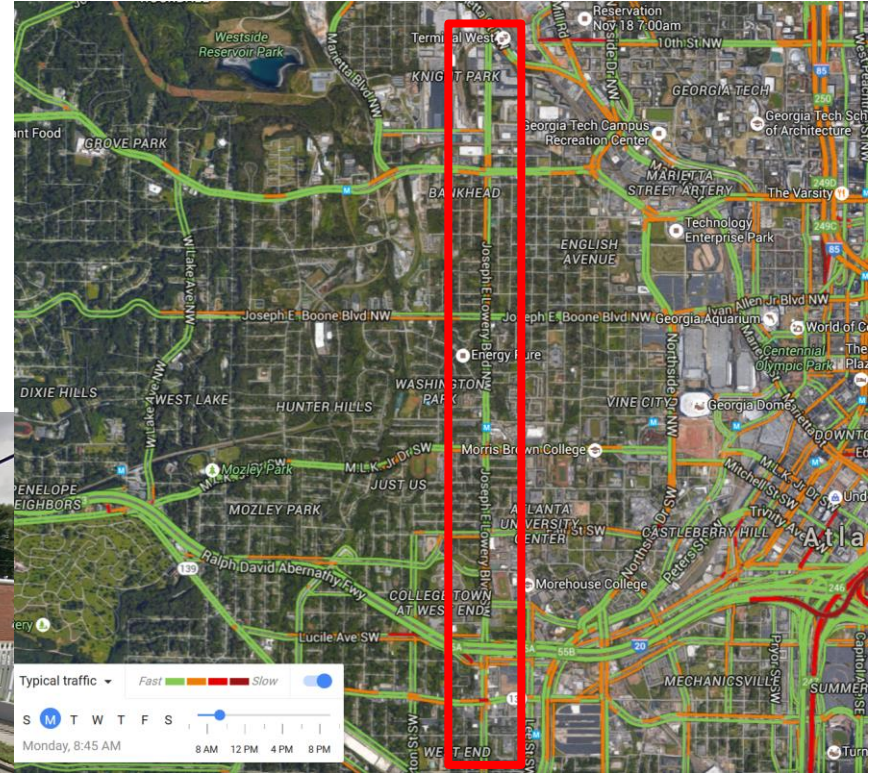


Joseph E. Lowery Blvd.

Bike Lanes

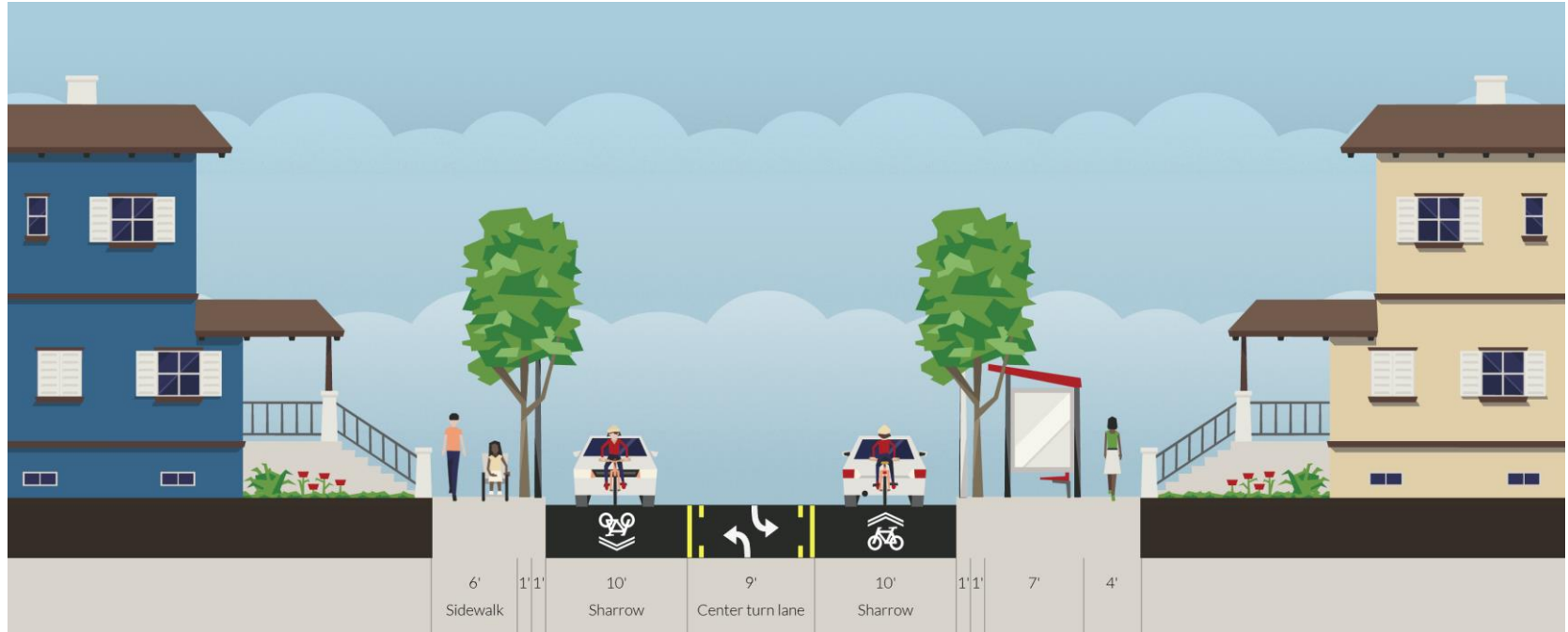
Regular / Enhanced Bus

Gondola



Joseph E. Lowery Blvd.

Alternative 2 – Regular / Enhanced Bus



Joseph E. Lowery Blvd.

Alternative 3 – Gondola



Gondola in Medellin, Colombia



Intersection Safety

Northside Drive and:

10th Street

8th Street

Tech Parkway / Marietta Street

Donald Lee Hollowell Parkway

North Avenue

Donald Lee Hollowell Parkway and:

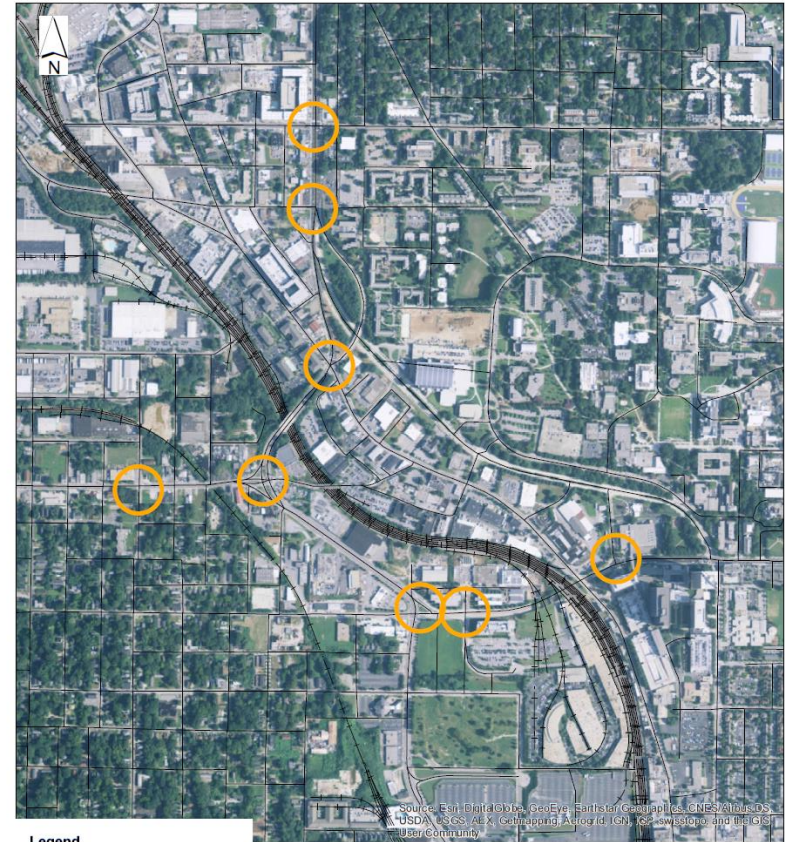
James P. Brawley Drive

North Avenue and:

Northyards Boulevard / Strong St.

State Street

Potential Intersection Improvements



Legend

- Intersection Improvements
- Streets
- Railroads

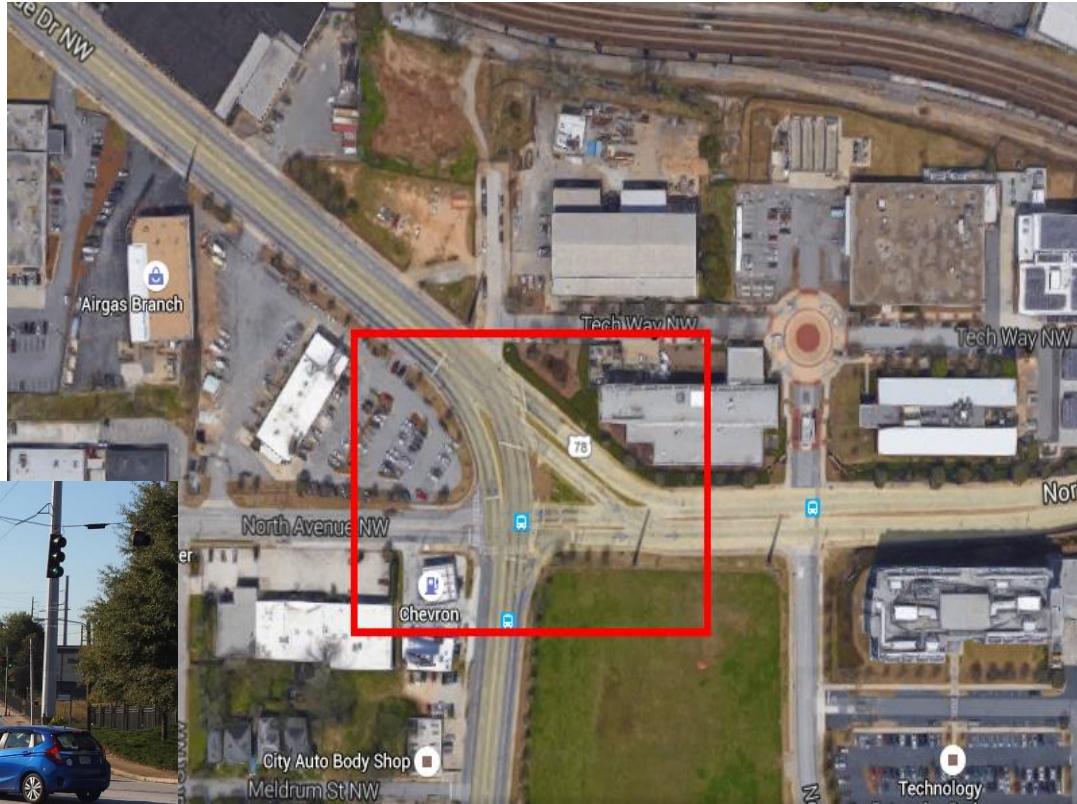
0 0.050.1 0.2 0.3 0.4 Miles

Northside @ North

Safer crossings

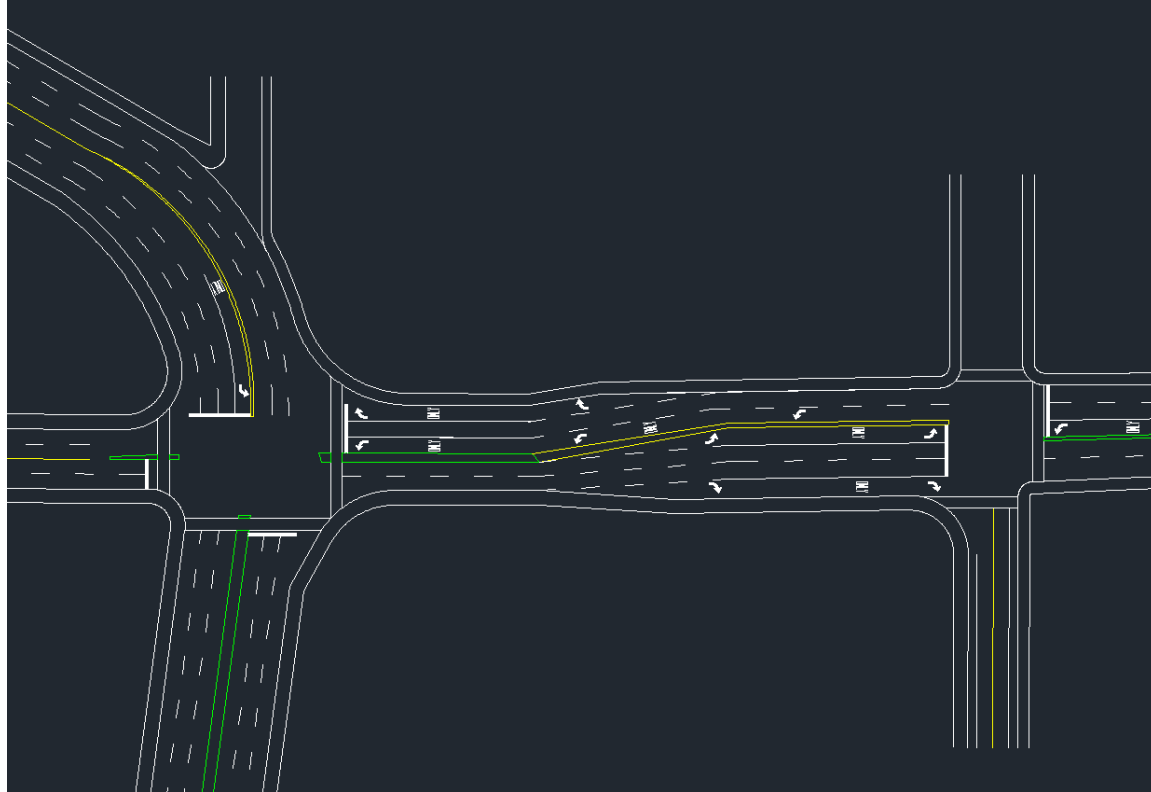
Simplified design

Transit infrastructure



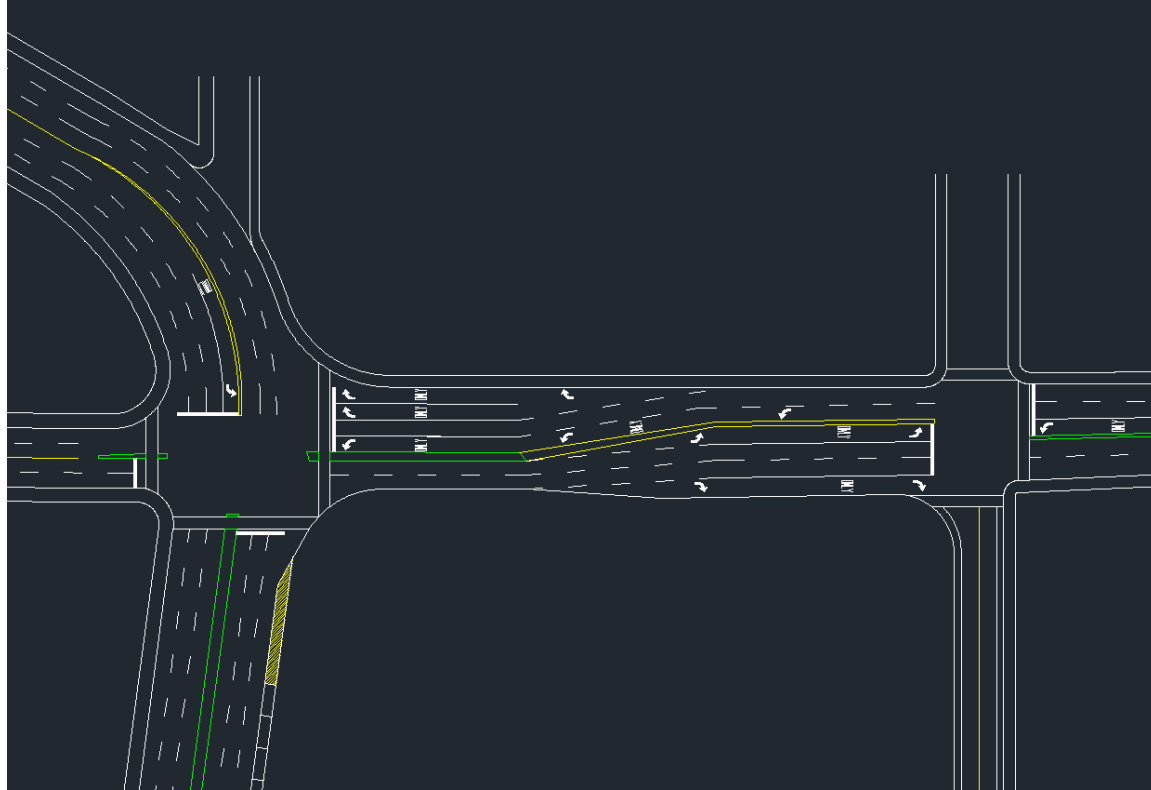
Northside @ North

Alternative 2



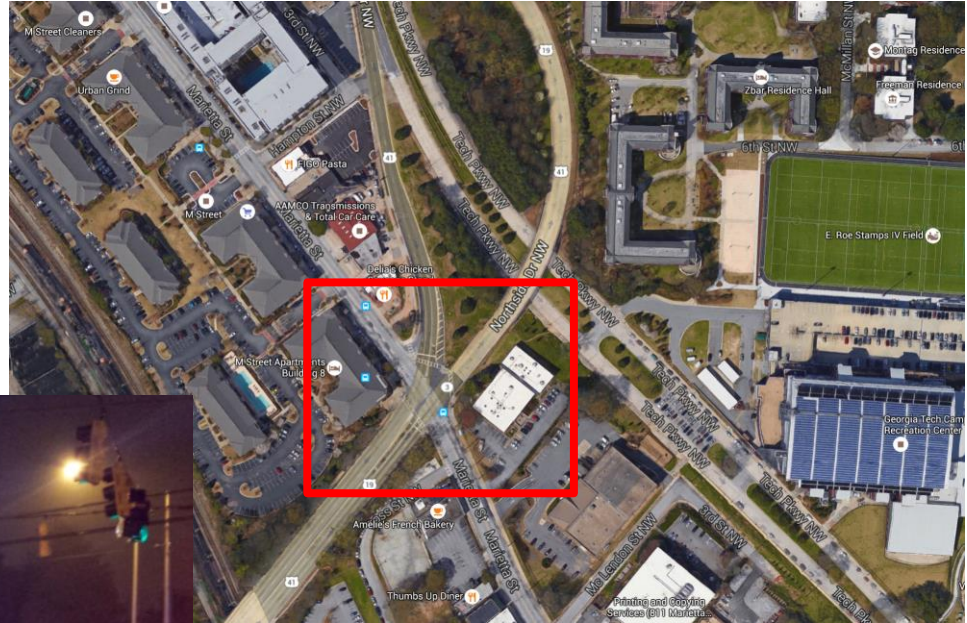
Northside @ North

Alternative 4



Northside @ Marietta

Improve crossings
Simplify design
Improve site lines



Any questions?

TEP / Westside Studio Team:

Carly Queen carlyqueen@gatech.edu

Chirag Date chiragdate@gatech.edu

Elizabeth Davis edavis78@gatech.edu

Florina Dutt florina.design@gatech.edu

Rishi Sanker rishragh@gatech.edu

Professor Mike Dobbins michael.dobbins@coa.gatech.edu