



Microscopic Image Segmentation to Quantification of *Leishmania* Infection in Macrophages

Guilherme Coelho ¹
Arlindo Rodrigues Galvão Filho ²
Rafael Viana-de-Carvalho ³
Gustavo Teodoro-Laureano ⁴
Samyra Almeida-da-Silveira ⁵
Clebio Eleutério-da-Silva ⁶
Rosa Maria Plácido Pereira ⁷
Anderson da Silva Soares ⁸
Telma Woerle de Lima Soares ⁹
Adriano Gomes-da-Silva ¹⁰
Hamilton Barbosa Napolitano ¹¹
Clarimar José Coelho ¹²

ABSTRACT

The determination of infection rate parameter from *in vitro* macrophages infected by *Leishmania* amastigotes is fundamental in the study of vaccine candidates and new drugs for the treatment of leishmaniasis. The conventional method that consists in the amastigotes count inside macrophages, normally is done by a trained microscope technician, which is liable to misinterpretation and sampling. The objective of this work is to develop a method for the segmentation of images to enable the automatic calculation of the infection rate by amastigotes. Segmentation is based on mathematical

¹ Graduação em Medicina pela Universidade Federal do Rio de Janeiro, UFRJ, Brasil. guico2lh@gmail.com

² Doutorado em Ciência da Computação pela Universidade Federal de Goiás, UFG, Brasil. Docente na Pontifícia Universidade Católica de Goiás, PUC GOIÁS, Brasil. argfilho@gmail.com

³ Doutorado em Computação pela Leiden University, LEIDEN, Holanda. Docente na Pontifícia Universidade Católica de Goiás, PUC GOIÁS, Brasil. <https://orcid.org/0000-0001-8656-5472>. rvcarvalho@gmail.com

⁴ Doutorado em Engenharia Elétrica pela Universidade de São Paulo, USP, Brasil. Docente na Universidade Federal de Goiás, UFG, Brasil. gustavolaureano@ufg.br

⁵ Mestrado em Biologia Parasitária pela Fundação Oswaldo Cruz, FIOCRUZ, Brasil. Técnico de Laboratório na Fundação Oswaldo Cruz, FIOCRUZ, Brasil. samybiologia@gmail.com

⁶ Mestrado em Medicina Tropical pela Fundação Oswaldo Cruz, FIOCRUZ, Brasil. clebioeleuterio@hotmail.com

⁷ Graduação em Ciências Biológicas pela Fundação Técnico Educacional Souza Marques, FTESM, Brasil. Tecnologista na Fundação Oswaldo Cruz, FIOCRUZ, Brasil. rosamplacido@gmail.com

⁸ Doutorado em Engenharia Eletrônica e Computação pelo Instituto Tecnológico de Aeronáutica, ITA, Brasil. Docente na Universidade Federal de Goiás, UFG, Brasil. engsoares@gmail.com

⁹ Doutorado em Ciências da Computação e Matemática Computacional pela Universidade de São Paulo, USP, Brasil. Docente na Universidade Federal de Goiás, UFG, Brasil. <http://orcid.org/0000-0002-4927-2221>. telma@inf.ufg.br

¹⁰ Doutorado em Medicina Tropical pela Fundação Oswaldo Cruz, FIOCRUZ, Brasil. Pesquisador no Instituto Nacional de Infectologia Evandro Chagas, INI, Brasil. adriano.gomes.ini2015@gmail.com

¹¹ Doutorado em Física Biomolecular pela Universidade de São Paulo, USP, Brasil. Docente na Universidade Estadual de Goiás, UEG, Brasil; e no Centro Universitário de Anápolis, UniEVANGÉLICA, Brasil. <https://orcid.org/0000-0002-6047-9995>. hbnapolitano@gmail.com

¹² Doutorado em Engenharia Eletrônica e Computação pelo Instituto Tecnológico de Aeronáutica, ITA, Brasil. Docente na Pontifícia Universidade Católica de Goiás, PUC GOIÁS, Brasil; e no Centro Universitário de Anápolis, UniEVANGÉLICA, Brasil. clarimarc@gmail.com

Guilherme Coelho; Arlindo Rodrigues Galvão Filho; Rafael Viana-de-Carvalho;
Gustavo Teodoro-Laureano; Samyra Almeida-da-Silveira; Clebio Eleutério-da-Silva;
Rosa Maria Plácido Pereira; Anderson da Silva Soares; Telma Woerle de Lima Soares;
Adriano Gomes-da-Silva; Hamilton Barbosa Napolitano; Clarimar José Coelho

morphology in the context of a computer vision system. The results obtained by computer vision system presents a 95% accuracy in comparison to the conventional method. Therefore, the proposed method can contribute to the speed and accuracy of analysis of infection rate, minimizing errors from the traditional methods, especially in situations where exhaustive repetitions of the procedure are required from the technician.

Keywords: Amastigote Count; Image Segmentation; Environmental Degradation.

Leishmaniasis in the tegumentary and visceral clinical forms are anthroponosis caused by protozoa of the genus *Leishmania* and transmitted by females of some phlebotomine insects species (Conceição-Silva and Alves 2014). They are worldwide prevalent neglected diseases with one million cases registered in the last five years and 20,000 deaths per year (WHO 2010).

Currently, environmental degradation such as changes in water temperature, irrigation, deforestation, climate change and drug resistance are important factors contributing to the spread of leishmaniasis (Akhoundi et al. 2016; Abrantes et al. 2018; Oryan and Akbari 2016). It is difficult to control the leishmaniasis because the fact there is no vaccine for the protection of humans and domestic animals (Da-Cruz and Pirmez 2005). The treatment of infected individuals is the main control parameter, since preventive measures are not efficient (Anversa et al. 2018).

Currently, the use of leishmanicidal drugs, such as antimonials, initially proposed by Brazilian physician Gaspar Vianna (Vianna 1912; Almeida et al. 2003), remains the first choice for treatment. New drug tests for the treatment of leishmaniasis require several stages of evaluation. Initially, the selective power of the drug¹³ and the efficiency in controlling the parasite load¹⁴ are evaluated in comparison to the conventional drugs (Sifontes-Rodríguez et al. 2015).

The development of mathematical methods is important for improving the quality of treatment using the therapeutic dose control and the optimization of laboratory protocols from the reduction of time costs (Catharina et al. 2017; Leal et al. 2012).

¹³ Ability to be toxic to the parasite without damaging the host cell.

¹⁴ Measured by the infection rate (the percentage of infected macrophages) and infection index (mean value of intracellular amastigotes among infected macrophages).

Guilherme Coelho; Arlindo Rodrigues Galvão Filho; Rafael Viana-de-Carvalho; Gustavo Teodoro-Laureano; Samyra Almeida-da-Silveira; Clebio Eleutério-da-Silva; Rosa Maria Plácido Pereira; Anderson da Silva Soares; Telma Woerle de Lima Soares; Adriano Gomes-da-Silva; Hamilton Barbosa Napolitano; Clarimar José Coelho

Biomedical research and diagnosis of diseases based on image analysis is an important strategy to minimize uncertainties in the dosage of drugs to combat disease and aid in the testing of new drugs (Catharina et al. 2017). Manual procedures of laboratory routine such as macrophage count can be replaced by automated procedures with gain of patient waiting time to receive the appropriate medication and cost reduction (Leal et al. 2012).

Automated procedures for counting macrophages involve different steps in the analysis of a digital image (Yazdanparast et al. 2014). Image segmentation is a stage of constantly evolving image analysis and consists of dividing the digital image into sets of pixels or regions in order to simplify the image for the analysis. In general, the success or failure of the analysis depends on the segmentation step (Petrou and Petrou 2010). Result of segmentation is a set of contours extracted from the image where each of the pixels of the same region is similar to some computational property such as color, intensity, texture or continuity (Snyder and Qi 2017).

Neves and collaborators propose an algorithm to locate the positions of macrophages and parasites in fluorescence images of *Leishmania*-infected macrophages. Their strategy is primarily based on blob detection, clustering, and separation using concave regions of the cells' contours. They claimed have achieved better performance in the automatic annotation for *Leishmania* infections in comparison with other approaches that analyse fluorescence images (Neves et al. 2014).

Ouertani and collaborators developed an automatic segmentation method to locate fluorescent Promastigote parasite. They developed segmentation algorithms for the removal of the background of the microscopic image and grouping in regions to remove noise and locate parasites in the fluorescent image (Ouertani et al. 2014).

Farahi and collaborators provide an automatic segmentation method of *Leishmania* parasite based on digital color microscopic images, captured from bone marrow samples (Farahi et al. 2015). The algorithm is based on the Chan and Vese method that ignores the edges (Chan and Vese 1999).

Taheri and collaborators developed a photography-based technique and an algorithm for extracting a three dimensional map of leishmaniasis lesion using a two dimensional image. The method finds the depth in the estimate of the blur of the image caused by a lens (Taheri et al. 2017).

This work presents an algorithm for robust segmentation of images based on mathematical morphology to enable counting of macrophages and intracellular amastigotes. Algorithm is able to handle with high variability of shapes and textures typical of optical light microscope images.

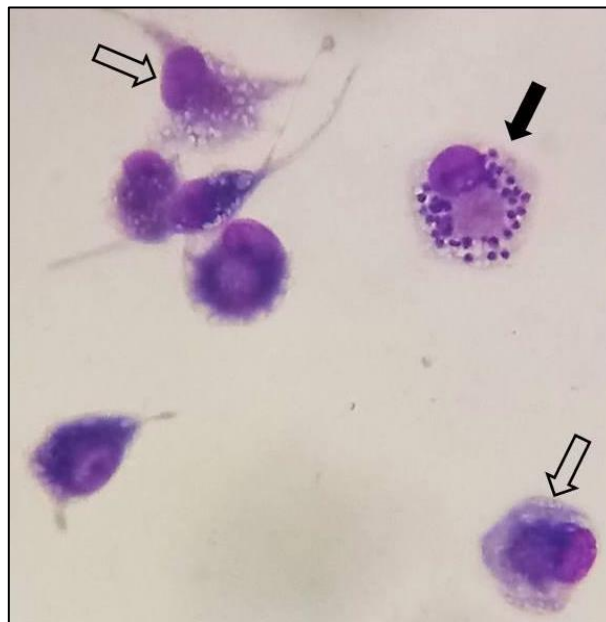
Guilherme Coelho; Arlindo Rodrigues Galvão Filho; Rafael Viana-de-Carvalho;
Gustavo Teodoro-Laureano; Samyra Almeida-da-Silveira; Clebio Eleutério-da-Silva;
Rosa Maria Plácido Pereira; Anderson da Silva Soares; Telma Woerle de Lima Soares;
Adriano Gomes-da-Silva; Hamilton Barbosa Napolitano; Clarimar José Coelho

MATERIAL AND METHODS

This work is related to the development of an algorithm for automatic annotation of *Leishmania* parasite in macrophages. The dataset are microscope images from macrophage monolayer culture. The samples are produced from rapid and focused panoptic method with 100x objective in immersion oil. The culture is prepared at the Interdisciplinary Laboratory of Medical Research (LIPMED) of the Oswaldo Cruz Foundation (FIOCRUZ). A Nikon eclipse 80i optical light microscope is used for imaging the samples.

Image segmentation process begins with the generation of color images in Red, Green, and Blue (RGB) space of 1024x1280 pixels and with 16 bit precision in each color channel. Morphological mathematical operations are applied only on channel B (blue) due to the coloration used in the preparation of the samples for the images acquisition.

Figure 01. Microscopy blade with *Leishmania*-infected macrophages. Full arrow indicates infected macrophage with intracellular amastigotes and empty arrows indicate the non-infected macrophages.



Source: FIOCRUZ (2018)

Figure 01 shows an example of the image set used for segmentation of macrophages. The background of the image or parts of the image that does not contain macrophages or *Leishmania* is characterized by regions of homogeneous colors with light tones. Macrophages define complex, larger regions, resulting from the presence of nucleus, depicted by dark regions and cytoplasm that has

Guilherme Coelho; Arlindo Rodrigues Galvão Filho; Rafael Viana-de-Carvalho;
 Gustavo Teodoro-Laureano; Samyra Almeida-da-Silveira; Clebio Eleutério-da-Silva;
 Rosa Maria Plácido Pereira; Anderson da Silva Soares; Telma Woerle de Lima Soares;
 Adriano Gomes-da-Silva; Hamilton Barbosa Napolitano; Clarimar José Coelho

characteristic texture. The *Leishmania* of interest are arranged in the cytoplasmic region of the macrophages as dark regions, however, of smaller area when compared to the macrophages nuclei.

The methodology proposed in this work starts by detecting the structures that make up the image based on its connectivity. To that end, the image is first submitted to a smoothing operator with Gaussian filter in order to remove edges from noisy structures that make up the image background. Since the original image $I(x, y)$ and $H(u, v)$ is the Gaussian filter, the smoothed image is obtained by the convolution operator

$$G(x, y) = I(x, y) * H(u, v) = \sum_{u, v \in H} [I(x - u, y - v) \cdot H(u, v)] \quad (1)$$

where $H(u, v) = (2\pi\sigma^2)^{-1/2} \exp\{-\frac{(u+v)^2}{2\sigma^2}\}$ and σ^2 is the variance of the Gaussian filter. The smoothing process results in an image with less influence of noise, prevailing macroscopic structures that make up the image. Then the background segmentation is obtained by binarizing the image so that $B(x, y) = 1$ if $G(x, y) \leq T$, and $B(x, y) = 0$ if $G(x, y) > T$, where B is the binary image and T is the binarization threshold that separates light regions (object of interest) from background.

Assuming that the objects of interest are connected regions, the binary image is subjected to the process of filling holes (holes, depression) to remove background pixels inside the light regions. The fill algorithm is the complement of the morphological reconstruction by dilation, resulting from the recursive morphological operation of geodesic dilations of the B image with the structuring element S using the marker F as the starting point (Gonzalez et al. 2008). We define F as a binary image of the same size as B , called the marker image constructed as $F(x, y) = 1 - B(x, y)$. If (x, y) is a pixel on the edge of image B , and $F(x, y) = 1$, otherwise. The geodesic dilation of size 01 of image B is denoted by $D_B^{(1)}(F) = (F \oplus S) \cap B$, with \oplus as dilation operator, and $D_B^{(n)}(F) = D_B^{(1)}(D_B^{(n-1)}(F))$ is recursive definition of dilation operation, considering $n > 1$. Binary image is denoted by H equal to B , free of holes

$$H = [R_{B^c}^D(F)]^c \quad (2)$$

where B^c is the complement of image B and $R_{B^c}^D(F) = D_{B^c}^{(k)}(F)$ is the morphological reconstruction operation by dilation with k such that $D_{B^c}^{(k)}(F) = D_{B^c}^{(k+1)}(F)$.

Guilherme Coelho; Arlindo Rodrigues Galvão Filho; Rafael Viana-de-Carvalho; Gustavo Teodoro-Laureano; Samyra Almeida-da-Silveira; Clebio Eleutério-da-Silva; Rosa Maria Plácido Pereira; Anderson da Silva Soares; Telma Woerle de Lima Soares; Adriano Gomes-da-Silva; Hamilton Barbosa Napolitano; Clarimar José Coelho

Identification of regions is achieved by applying the pixel labeling method according to their connectivity. Let X_n^0 a binary matrix, of the same size as H , formed by zeros except for a position corresponding to a point of the n th connected region of H , the iterative procedure

$$X_n^k = (X_n^{k-1} \oplus S) \cap H. \quad (3)$$

results in the n th image. The procedure ends when $X_n^k = X_n^{k-1}$, $k = 1, 2, 3, \dots$

Regions X_n , whose area is larger than A_M are considered macrophages. For detection of amastigotes the same method is applied considering a minimum area of A_L , but only in the regions of the image that are occupied by the identified macrophages. For the results presented in this work, the values are: $T_M = 45000$ and $A_M = 10000$; the binarization threshold and minimum area for the segmented regions in the macrophages detection stage $T_L = 30$ and $A_L = 300$; the binarization threshold and minimum area for the segmented regions in the detection stage of *Leishmania*.

The parameters used are defined empirically during the image analysis process. The segmentation process is executed with different parameters values and the results analyzed until the best outcome. In the result and discussion section is presented the parameters used to obtain the results and the implication to use the same values in other images to obtain similar results. Definition of values to these parameters can be considered as a contribution of this work.

The algorithm was developed at the Scientific Computing Laboratory (*Laboratório de Computação Científica*, LCC) of the Pontifical Catholic University of Goiás using Matrix Laboratory (MATLAB).

RESULTS AND DISCUSSION

The results presented are related to the detection and counting of macrophages and amastigotes in images obtained from different visual fields containing a certain confluence. To illustrate the results, Figure 02 depicts the detection of macrophages. It shows a yellow outline delimiting the edges of each macrophages. Each macrophage was identified from one to three, starting from left to right. It is also possible to visualize two other forms above and below the macrophage three, referring to artifacts of technique of blade attachment. This figure is used as an example of quantitative analysis to all results obtained from the method.

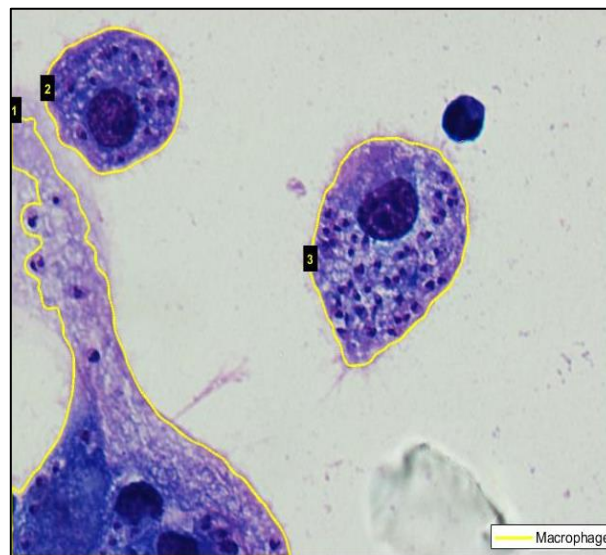
Guilherme Coelho; Arlindo Rodrigues Galvão Filho; Rafael Viana-de-Carvalho; Gustavo Teodoro-Laureano; Samyra Almeida-da-Silveira; Clebio Eleutério-da-Silva; Rosa Maria Plácido Pereira; Anderson da Silva Soares; Telma Woerle de Lima Soares; Adriano Gomes-da-Silva; Hamilton Barbosa Napolitano; Clarimar José Coelho

Macrophage **1** is detected as a single form. However, it is not possible to determine whether there are different macrophages or a single macrophage activated macrophage. Thus, in agreement with what occurs in conventional counting, macrophage **1** is not included in the analysis because it is not possible to determine whether there are different macrophages or a single activated macrophage. Thus, according to conventional counting, macrophage **1** is not included in the automatic analysis.

Figure 03 shows the results of the detection and counting of *Leishmaniasis* into macrophages **2** and **3** of Figure 02. In Figure 3(a), it is possible to verify that the algorithm detected all 15 *Leishmania* contained in macrophage 02. Figure 3(b) shows that the algorithm detected 45 *Leishmania*, while in manual counting it was detected 42 for the same image. In this case the algorithm obtains three false positives because some regions of the image have similar characteristics of coloration and area.

Proposed algorithm is executed for three more images resulting from different visual fields. Considering all the macrophages reliable for analysis, the algorithm obtained 95% accuracy compared to conventional counting done by a specialist.

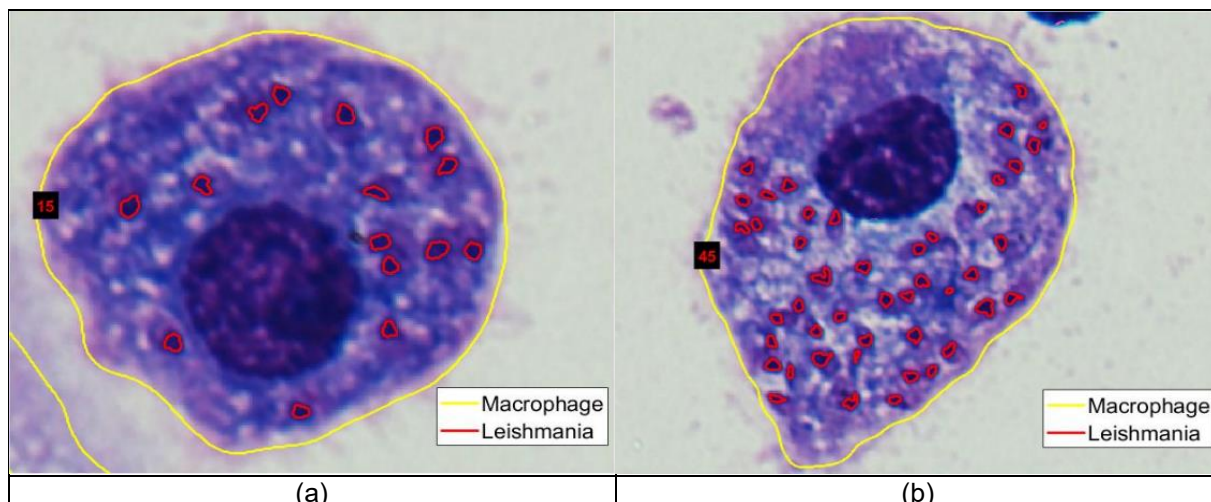
Figure 02. Microscopy blade with Leishmania-infected macrophages for automatic segmentation of macrophages.



Source: FIOCRUZ (2018)

Figure 03. Result of detection and counting of Leishmania amastigotes within macrophages. (a) macrophage within 15 Leishmania parasite detected by the algorithm; (b) macrophage within 45 Leishmania detected by the algorithm.

Guilherme Coelho; Arlindo Rodrigues Galvão Filho; Rafael Viana-de-Carvalho;
Gustavo Teodoro-Laureano; Samyra Almeida-da-Silveira; Clebio Eleutério-da-Silva;
Rosa Maria Plácido Pereira; Anderson da Silva Soares; Telma Woerle de Lima Soares;
Adriano Gomes-da-Silva; Hamilton Barbosa Napolitano; Clarimar José Coelho



Source: FIOCRUZ (2018)

CONCLUSION

The automated microscope image analysis is an important tool to improve the speed and accuracy in the detection of disease. It is possible to analyze tens of thousands of images per day, avoiding subjective analysis that can occur in the traditional visual examination and minimize false positive derived from external interferences.

In this work, an algorithm was proposed for automatic counting of macrophages and intracellular *Leishmania* in microscopy images based on mathematical morphology in the context of computer vision. Macrophages and *Leishmania*, are connected structures formed by shades of similar pixels that differ in relation to their area and location on the sample, it was found that it is possible to differentiate and count the objects of interest to further determine the rate of infection by *Leishmaniasis*.

At the current stage of the algorithm, results obtained approximate the results produced by specialists in manual counting with the advantage of being automated and performed in a shorter time when compared to the manual counting process. In future works, it is intended to obtain more images and maintain a direct relationship with the experts for the fine tuning of the algorithm. Next, a method will be developed to calculate the *Leishmania* infection index or infection rate for the development of a mobile application to be used in different locations to aid in many applications like search for new anti-*Leishmania* drugs or anti-*Leishmania* vaccines.

Guilherme Coelho; Arlindo Rodrigues Galvão Filho; Rafael Viana-de-Carvalho;
Gustavo Teodoro-Laureano; Samyra Almeida-da-Silveira; Clebio Eleutério-da-Silva;
Rosa Maria Plácido Pereira; Anderson da Silva Soares; Telma Woerle de Lima Soares;
Adriano Gomes-da-Silva; Hamilton Barbosa Napolitano; Clarimar José Coelho

ACKNOWLEDGMENT

This is a contribution of the National Institute of Advanced Analytical Science and Technology (INCTAA) (CNPq - proc. no. 573894/2008-6 and FAPESP proc. no. 2008/57808-1).

REFERENCES

- Abrantes, Tuanne Rotti, Guilherme Loureiro Werneck, Andréa Sobral de Almeida, and Fabiano Borges Figueiredo. 2018. “Fatores Ambientais Associados à Ocorrência de Leishmaniose Visceral Canina Em Uma Área de Recente Introdução Da Doença No Estado Do Rio de Janeiro, Brasil.” *Cadernos de Saúde Pública* 34 (1). <https://doi.org/10.1590/0102-311x00021117>.
- Akhoundi, Mohammad, Katrin Kuhls, Arnaud Cannet, Jan Votýpka, Pierre Marty, Pascal Delaunay, and Denis Sereno. 2016. “A Historical Overview of the Classification, Evolution, and Dispersion of Leishmania Parasites and Sandflies.” Edited by Anne-Laure Bañuls. *PLOS Neglected Tropical Diseases* 10 (3): e0004349. <https://doi.org/10.1371/journal.pntd.0004349>.
- Almeida, MC de, V Vilhena, A Barral, and M Barral-Netto. 2003. “Leishmanial Infection: Analysis of Its First Steps. A Review.” *Memórias Do Instituto Oswaldo Cruz* 98 (7): 861–70. <https://doi.org/10.1590/S0074-02762003000700001>.
- Anversa, Laís, Monique Gomes Salles Tiburcio, Virgínia Bodelão Richini-Pereira, and Luis Eduardo Ramirez. 2018. “Human Leishmaniasis in Brazil: A General Review.” *Revista Da Associação Médica Brasileira* 64 (3): 281–89. <https://doi.org/10.1590/1806-9282.64.03.281>.
- Catharina, Larissa, Carlyle Ribeiro Lima, Alexander Franca, Ana Carolina Ramos Guimarães, Marcelo Alves-Ferreira, Pierre Tuffery, Philippe Derreumaux, and Nicolas Carels. 2017. “A Computational Methodology to Overcome the Challenges Associated With the Search for Specific Enzyme Targets to Develop Drugs Against Leishmania Major.” *Bioinformatics and Biology Insights* 11 (January): 117793221771247. <https://doi.org/10.1177/1177932217712471>.
- Chan, Tony, and Luminita Vese. 1999. “An Active Contour Model without Edges.” In , 141–51. https://doi.org/10.1007/3-540-48236-9_13.
- Conceição-Silva, Fátima, and Carlos Roberto Alves. 2014. *Leishmanioses Do Continente Americano*. Rio de Janeiro: Editora FIOCRUZ.
- Da-Cruz, Alda Maria, and Claude Pirmez. 2005. “Leishmaniose Tegumentar Americana.” In *Dinâmica Das Doenças Infecciosas e Parasitárias*, edited by José Rodrigues Coura, 697–712. Rio de Janeiro: Guanabara Koogan.
- Farahi, Maria, Hossein Rabbani, Ardeshir Talebi, Omid Sarrafzadeh, and Shahab Ensafi. 2015. “Automatic Segmentation of Leishmania Parasite in Microscopic Images Using a Modified CV Level Set Method.” In *Seventh International Conference on Graphic and Image Processing (ICGIP 2015)*, edited by Yi Xie, Yulin Wang, and Xudong Jiang, 98170K. <https://doi.org/10.1117/12.2228580>.
- FIOCRUZ. 2018. “Instituto Nacional de Infectologia Evandro Chagas.” 2018. <https://www.ini.fiocruz.br/>.

Guilherme Coelho; Arlindo Rodrigues Galvão Filho; Rafael Viana-de-Carvalho; Gustavo Teodoro-Laureano; Samyra Almeida-da-Silveira; Clebio Eleutério-da-Silva; Rosa Maria Plácido Pereira; Anderson da Silva Soares; Telma Woerle de Lima Soares; Adriano Gomes-da-Silva; Hamilton Barbosa Napolitano; Clarimar José Coelho

- Leal, Pedro, Luís Ferro, Marco Marques, Susana Romão, Tânia Cruz, Ana M. Tomá, Helena Castro, and Pedro Quelhas. 2012. "Automatic Assessment of Leishmania Infection Indexes on In Vitro Macrophage Cell Cultures." In *Image Analysis and Recognition*, edited by Aurélio Campilho and Mohamed Kamel, 432–39. Springer. https://doi.org/10.1007/978-3-642-31298-4_51.
- Neves, João C., Helena Castro, Ana Tomás, Miguel Coimbra, and Hugo Proença. 2014. "Detection and Separation of Overlapping Cells Based on Contour Concavity for Leishmania Images." *Cytometry Part A* 85 (6): 491–500. <https://doi.org/10.1002/cyto.a.22465>.
- Oryan, A., and M. Akbari. 2016. "Worldwide Risk Factors in Leishmaniasis." *Asian Pacific Journal of Tropical Medicine* 9 (10): 925–32. <https://doi.org/10.1016/j.apjtm.2016.06.021>.
- Ouertani, F., H. Amiri, J. Bettaib, R. Yazidi, and A. Ben Salah. 2014. "Adaptive Automatic Segmentation of Leishmaniasis Parasite in Indirect Immunofluorescence Images." In *2014 36th Annual International Conference of the IEEE Engineering in Medicine and Biology Society*, 4731–34. IEEE. <https://doi.org/10.1109/EMBC.2014.6944681>.
- Petrou, Maria, and Costas Petrou. 2010. *Image Processing: The Fundamentals*. 2nd ed. New York: Wiley.
- Sifontes-Rodríguez, Sergio, Lianet Monzote-Fidalgo, Nilo Castañedo-Cancio, Ana Margarita Montalvo-Álvarez, Yamilé López-Hernández, Niurka Mollineda Diogo, Juan Francisco Infante-Bourzac, et al. 2015. "The Efficacy of 2-Nitrovinylfuran Derivatives Against Leishmania in Vitro and in Vivo." *Memórias Do Instituto Oswaldo Cruz* 110 (2): 166–73. <https://doi.org/10.1590/0074-02760140324>.
- Snyder, Wesley E., and Hairong Qi. 2017. *Fundamentals of Computer Vision*. Cambridge: Cambridge University Press.
- Taheri, AhmadReza, Saeid Alikhani, Ameneh Sazgarnia, Maryam Salehi, and SadeghVahabi Amlashi. 2017. "Digital Volumetric Measurement of Cutaneous Leishmaniasis Lesions: Blur Estimation Method." *Indian Journal of Dermatology, Venereology, and Leprology* 83 (3): 307. https://doi.org/10.4103/ijdv.IJDDL_134_16.
- Vianna, G. O. 1912. "Tratamento Da Leishmaniose Tegumentar Com Injeções Intravenosas de Tártaro Emético." In *Anais Do VII Congresso Brasileiro de Medicina e Cirurgia*, 426–28.
- WHO. 2010. "Control of the Leishmaniasis: Report of a Meeting of the WHO Expert Committee on the Control of Leishmaniasis." Geneva.
- Yazdanparast, Ehsan, Antonio Dos Anjos, Deborah Garcia, Corinne Loeuillet, Hamid Reza Shahbazkia, and Baptiste Vergnes. 2014. "INsPECT, an Open-Source and Versatile Software for Automated Quantification of (Leishmania) Intracellular Parasites." Edited by Shaden Kamhawi. *PLoS Neglected Tropical Diseases* 8 (5): e2850. <https://doi.org/10.1371/journal.pntd.0002850>.

Guilherme Coelho; Arlindo Rodrigues Galvão Filho; Rafael Viana-de-Carvalho;
Gustavo Teodoro-Laureano; Samyra Almeida-da-Silveira; Clebio Eleutério-da-Silva;
Rosa Maria Plácido Pereira; Anderson da Silva Soares; Telma Woerle de Lima Soares;
Adriano Gomes-da-Silva; Hamilton Barbosa Napolitano; Clarimar José Coelho

Segmentação de Imagem Microscópica para a Quantificação de Infecção por Leishmania em Macrófagos

RESUMO

A determinação de parâmetros como taxa de infecção em monocultura de macrófagos cultivados *in vitro* com *Leishmania* é fundamental no estudo de candidatos vacinais e novos fármacos para o tratamento de leishmanioses. O método convencional que consiste na contagem de amastigotas no interior de macrófagos, normalmente é realizada por um especialista treinado em microscopia óptica, o que está sujeito a erros de interpretação e amostragem. O objetivo do trabalho é desenvolver um método para a segmentação de imagens como etapa preliminar para o cálculo automático da taxa de infecção por amastigotas. A segmentação é baseada em morfologia matemática no contexto de um sistema de visão computacional. Os resultados obtidos pelo método computacional demonstraram acerto de 95% quando comparados ao método convencional. Conclui-se que a metodologia computacional baseada na segmentação de imagem como pré-requisito para o cálculo de taxa de infecção, pode contribuir para a rapidez e a precisão na obtenção dos resultados e na minimização de erros cometidos no método tradicional, especialmente em situações em que exaustivas repetições do procedimento são exigidas ao observador.

Palavras-Chave: Contagem de Amastigotas; Segmentação de Imagem; Degradação Ambiental.

Submission: 04/09/2018

Acceptance: 12/12/2019