


RESEARCH

Open Access



# Succession of physiological stages hallmarks the transcriptomic response of the fungus *Aspergillus niger* to lignocellulose

Jolanda M. van Munster<sup>1,2†</sup>, Paul Daly<sup>1,3,11†</sup>, Martin J. Blythe<sup>4</sup>, Roger Ibbett<sup>5</sup>, Matt Kokolski<sup>1</sup>, Sanyasi Gaddipati<sup>5</sup>, Erika Lindquist<sup>6</sup>, Vasanth R. Singan<sup>6</sup>, Kerrie W. Barry<sup>6</sup>, Anna Lipzen<sup>6</sup>, Chew Yee Ngan<sup>6</sup>, Christopher J. Petzold<sup>7</sup>, Leanne Jade G. Chan<sup>7</sup>, Mikko Arvas<sup>8</sup>, Roxane Raulo<sup>1</sup>, Steven T. Pullan<sup>1,9</sup>, Stéphane Delmas<sup>1,10</sup>, Igor V. Grigoriev<sup>6</sup>, Gregory A. Tucker<sup>5</sup>, Blake A. Simmons<sup>7</sup> and David B. Archer<sup>1\*</sup>

## Abstract

**Background:** Understanding how fungi degrade lignocellulose is a cornerstone of improving renewables-based biotechnology, in particular for the production of hydrolytic enzymes. Considerable progress has been made in investigating fungal degradation during time-points where CAZyme expression peaks. However, a robust understanding of the fungal survival strategies over its life time on lignocellulose is thereby missed. Here we aimed to uncover the physiological responses of the biotechnological workhorse and enzyme producer *Aspergillus niger* over its life time to six substrates important for biofuel production.

**Results:** We analysed the response of *A. niger* to the feedstock *Miscanthus* and compared it with our previous study on wheat straw, alone or in combination with hydrothermal or ionic liquid feedstock pretreatments. Conserved (substrate-independent) metabolic responses as well as those affected by pretreatment and feedstock were identified via multivariate analysis of genome-wide transcriptomics combined with targeted transcript and protein analyses and mapping to a metabolic model. Initial exposure to all substrates increased fatty acid beta-oxidation and lipid metabolism transcripts. In a strain carrying a deletion of the ortholog of the *Aspergillus nidulans* fatty acid beta-oxidation transcriptional regulator *farA*, there was a reduction in expression of selected lignocellulose degradative CAZyme-encoding genes suggesting that beta-oxidation contributes to adaptation to lignocellulose. Mannan degradation expression was wheat straw feedstock-dependent and pectin degradation was higher on the untreated substrates. In the later life stages, known and novel secondary metabolite gene clusters were activated, which are of high interest due to their potential to synthesize bioactive compounds.

**Conclusion:** In this study, which includes the first transcriptional response of *Aspergillus* to *Miscanthus*, we highlighted that life time as well as substrate composition and structure (via variations in pretreatment and feedstock) influence the fungal responses to lignocellulose. We also demonstrated that the fungal response contains physiological stages that are conserved across substrates and are typically found outside of the conditions with high CAZyme expression, as exemplified by the stages that are dominated by lipid and secondary metabolism.

\*Correspondence: david.archer@nottingham.ac.uk

†Jolanda M. van Munster and Paul Daly contributed equally to this work

<sup>1</sup> School of Life Sciences, University of Nottingham, University Park, Nottingham NG7 2RD, UK

Full list of author information is available at the end of the article



© The Author(s) 2020. This article is licensed under a Creative Commons Attribution 4.0 International License, which permits use, sharing, adaptation, distribution and reproduction in any medium or format, as long as you give appropriate credit to the original author(s) and the source, provide a link to the Creative Commons licence, and indicate if changes were made. The images or other third party material in this article are included in the article's Creative Commons licence, unless indicated otherwise in a credit line to the material. If material is not included in the article's Creative Commons licence and your intended use is not permitted by statutory regulation or exceeds the permitted use, you will need to obtain permission directly from the copyright holder. To view a copy of this licence, visit <http://creativecommons.org/licenses/by/4.0/>. The Creative Commons Public Domain Dedication waiver (<http://creativecommons.org/publicdomain/zero/1.0/>) applies to the data made available in this article, unless otherwise stated in a credit line to the data.

**Keywords:** *Aspergillus niger*, Lignocellulose, Pretreatment, System analysis, CAZymes, Metabolism, Fatty acids beta-oxidation, *farA*, Secondary metabolism

## Background

Plant biomass is a renewable natural resource that is highly abundant, and is increasingly attracting attention for use of its components in the production of fuels, platform chemicals and materials [1–3]. Effective deconstruction of lignocellulose from dedicated feedstock crops such as *Miscanthus*, or agricultural waste such as sugar cane bagasse and wheat straw is becoming increasingly urgent as availability of fossil resources is decreasing [4]. Industrial scale use of plant biomass for biotechnologies is hampered by biomass recalcitrance [5, 6], whereas nature evolved effective microbial systems to recycle lignocellulose [7–9]. To fully exploit such natural deconstruction systems in biotechnology we first need a system-level understanding of microbial actions in response to lignocellulose.

In nature, saprophytic fungi are effective degraders of plant biomass [10–12]. Through tightly regulated responses to nutritional and environmental cues they can secrete a large array of hydrolytic enzymes and other effectors [7, 13–17]. Fungi such as *Trichoderma reesei* and *Aspergillus niger* are widely used in commercial production of these enzymes, due to their high titer secretion of degradative enzymes under industrial conditions [18, 19]. In addition *A. niger* has a firmly established role as industrial workhorse in the production of organic acids and other high value compounds [19]. It is therefore imperative to increase the understanding of the saprotrophic biology of these particular fungi.

In biotechnology, strategies to overcome substrate recalcitrance include engineering of enzyme cocktails and microbial strains for improved degradation as well as improving biomass digestibility via engineering of its composition or structure, or via chemical or physical pretreatment [6, 20–22]. Pretreatments, currently essential for effective lignocellulose processing, increase biomass digestibility via various mechanisms. Hydrothermal treatments remove hemicellulose components and break linkages between lignin and polysaccharides [23, 24] while ionic liquids solubilise wall components and generate, after recovery, insoluble but highly digestible polymers [3, 25]. However, even small differences in composition and structure of plant cell walls can significantly affect their digestibility [20, 26]. As ascomycetes have been described to strongly respond to differences in polysaccharides used as carbon source [27–29] and also exhibit partially conserved (substrate independent) responses to complex lignocellulose [30–33], here we

investigated the effect of both hydrothermal and ionic liquid pretreated biomass as well as untreated feedstocks on the system-level response of *A. niger*.

The production of plant cell wall hydrolytic enzymes by *A. niger* is a highly orchestrated process. Initial responses of the fungi to biomass include alleviation of carbon catabolite repression and production of a set of scouting enzymes that scavenges for carbon sources [32, 34–38]. These then mediate release of small soluble carbohydrates from biomass, thereby inducing expression of an appropriate broad set of degradative enzymes via a network of transcriptional regulators [7, 14, 39–42]. Subsequent degradation of lignocellulose components can be expected to reflect the evolved fungal biochemical capacity [27, 43]. Fungal production of CAZymes and signalling responses to different sources of complex carbohydrates have been documented extensively, often capturing a snapshot of events at one or a selected few moments, such as when the CAZyme expression was peaking, in the cultivation time [28–34, 43–46]. Knowledge on the wider, and potentially time-staged, physiological responses and degradative strategies of *A. niger* is however still very limited.

To overcome this limitation, here we aimed to generate a systems level understanding of physiological responses of *A. niger* to lignocellulose. Previously, we found that the expression of *A. niger* CAZymes was determined by compositional changes in wheat straw generated by hydrothermal or ionic liquid pretreatments. We demonstrated how a high-resolution time series analysis captured a comprehensive view of the production of CAZymes in response to substrate compositional changes in wheat straw but did not examine other physiological responses [31]. Here we build on this approach to elucidate the effect of feedstock identity as well as pretreatment and cultivation time on the wider *A. niger* transcriptional landscape. We applied the high resolution time-staged transcriptome approach to cultivations with *Miscanthus* lignocellulose, both untreated and pretreated with ionic liquid or hydrothermally. Using this first dataset of the *Aspergillus* transcriptome on *Miscanthus* we furthermore aimed to uncover conserved fungal cell biological responses that are important to biomass degradation. The physiological responses to lignocellulose identified here will improve understanding of fungal degradative strategies, and potentially aid understanding on the requirements for development of *Aspergillus* strains for bio-processing.

## Results and discussion

### *Aspergillus niger* cultivation over time is affected by pretreatment of *Miscanthus* that influences its composition and digestibility

*Aspergillus niger* was exposed to knife-milled *Miscanthus* (KMM) as well as ionic liquid (IL) and hydrothermally (HT) pretreated *Miscanthus* for up to 5 days to identify the system-level fungal responses upon exposure to these substrates (Fig. 1a). Time-courses were terminated earlier where RNA of sufficient quantity and quality could no longer be obtained, i.e. after 24 h exposure of mycelium to HT pretreated *Miscanthus* (HTM) or 2 days to KMM, which suggested reduced fungal viability under these conditions.

HT pretreatment of *Miscanthus* reduced the arabinose and galactose content  $\geq 10$ -fold and the xylose content

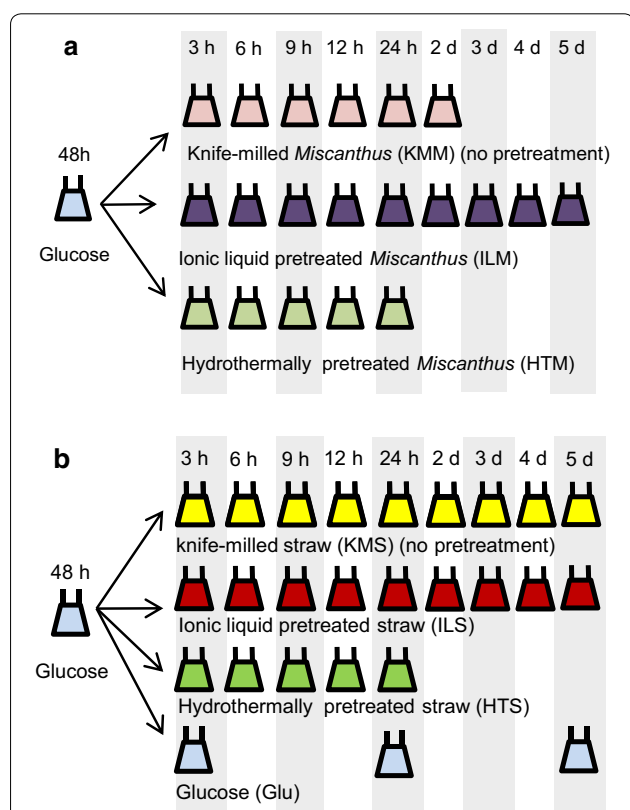
twofold (Additional file 1: Fig. S1a), indicating loss of hemicellulose and pectin, while IL pretreatment reduced cellulose crystallinity (Additional file 1: Fig. S1b). As expected both pretreatments improved substrate saccharification with a standard commercial enzyme cocktail (Additional file 1: Fig. S1c). Fungal degradation of HTM appeared to be less than that achieved with the commercial enzyme saccharification. The xylan detected in the solid fraction retrieved from cultures of *A. niger* with KMM reduced by 26% over the first 24 h of cultivation, whereas in HTM it reduced by only 18%, suggesting less degradation of HTM than KMM during cultivations (Additional file 1: Fig. S1d). In contrast, xylan content of ILM decreased by 71% after 24 h cultivation, indicating that its increased digestibility in enzymatic saccharification also occurred in the fungal cultivations. Levels of monosaccharides in culture filtrates support increased ILM digestibility in fungal cultivations compared to KMM. In the 9–24 h time points of exposure to ILM, up to 2.2 mM of xylose and arabinose was detected (Additional file 1: Fig. S1e), whereas monosaccharide concentrations in other conditions were  $< 100 \mu\text{M}$ . This suggests high sugar release via effective ILM digestion and accumulation to levels reported to be high enough [47] to activate carbon catabolite repression.

The overall effect of HT and IL pretreatment on *Miscanthus* feedstock composition and digestibility, and its subsequent degradation in fungal cultures, was similar to our wheat straw study [31]. However, feedstock identity affected the end result of pretreatments and subsequent fungal cultivation; *Miscanthus* was less digestible than knife milled wheat straw (KMS) and pretreatments only partly remedied this. For example, saccharification with commercial enzymes released fourfold less sugar from KMM than from KMS but twofold less from HTM than from HT pretreated straw (HTS), with no difference for ILM and IL pretreated straw (ILS).

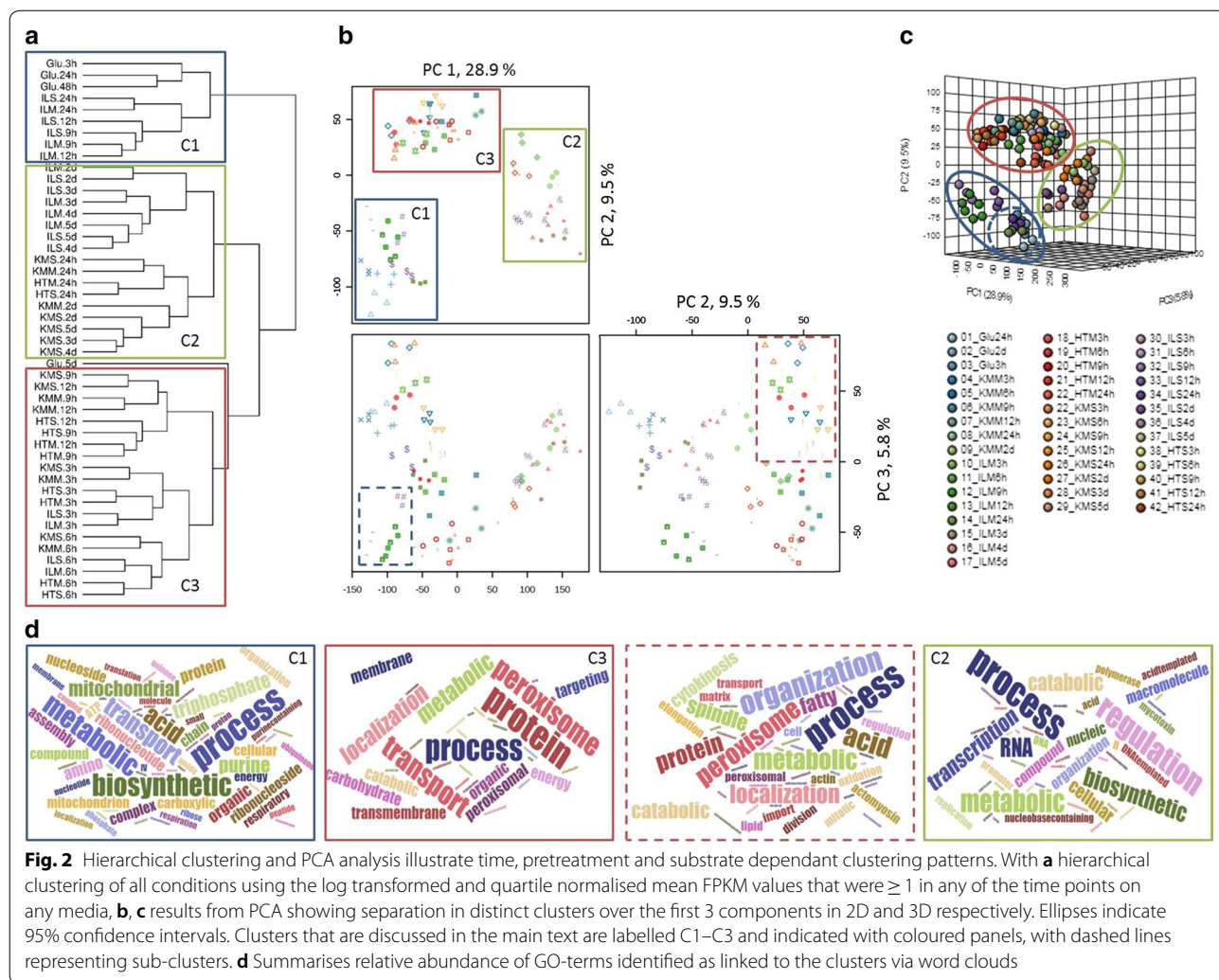
### Overview of gene expression during cultivation on complex substrates

We investigated the transcriptional landscape of *A. niger* to untreated and pretreated *Miscanthus* to elucidate the effect of feedstock and pretreatment on gene expression, and to identify the system-level fungal responses to cultivation. We analysed the data together with that of cultivations on untreated and pretreated wheat straw from our previous study [31] (Fig. 1b), where the broader physiological responses beyond CAZymes had not yet been analysed. This resulted in a data matrix of 47 conditions of *A. niger* cultured with a particular (pre- or untreated) substrate (Fig. 1).

Hierarchical clustering of the transcript levels of all genes (Fig. 2a), showed that pretreatment had the most



**Fig. 1** Schematic representation of experimental setup. **a** *A. niger* was cultivated in shake flasks with glucose as carbon source, after which mycelium was transferred to shake flask containing either knife milled *Miscanthus* (KMM), or KMM pretreated with ionic liquid (ILM) or hydrothermal treatment (HTM). Mycelium was harvested at indicated time points after which RNA was isolated and sequenced. This dataset was compared to data obtained with a similar experiment b using knife milled wheat straw (KMS) and pretreated straw (ILS, HTS) [31]. **b** is reproduced from [31] under a CC BY (<https://creativecommons.org/licenses/by/4.0/>) license



discriminatory effect, as demonstrated by clustering of selected IL pretreated conditions with glucose-grown conditions (Cluster 1, C1, indicated in blue). The second most influential contribution to differences between samples was cultivation time; early (3–6 h) time points clustered together, as do 9–12 h conditions, and together these group (C3, red) separately from later time points (C2, green). Surprisingly, lignocellulose feedstock identity (i.e. *Miscanthus* or wheat straw) had an overall minor effect on clustering pattern. Subsequent PCA confirmed separation of conditions on the first to third principal component (Fig. 2b, c) corresponded mainly to effects of pretreatment and cultivation time, with follow-on detailed analysis revealing feedstock effects.

The genes and processes underpinning the observed variation in gene expression between sample groups were identified via analysis of the PCA loadings, (which identifies genes whose expression levels contributed highest to the sample group distribution) via gene transcription

patterns and GO-term enrichments. Samples from cultures grown on glucose and those cultivated on IL pretreated substrates for 9 h, 12 h and 24 h, cluster together (C1) on PCA1 and PCA2. Genes with highest loadings for this group, whose expression levels contributed highest to the clustering, were enriched for those annotated with GO-terms for respiration, e.g. mitochondrial function including transport, organisation, ATP metabolism, as well as biosynthesis of compounds as amino acids and organic acids. IL 9 h and 12 h time points distinguished themselves (Fig. 2b, c) from the glucose grown samples via enrichment of GO-terms associated with translation. Identified GO-terms are summarised in word clouds (Fig. 2d).

The 3 h to 12 h time points on lignocellulose (except ILM and ILS 9–12 h) formed cluster C3. Genes with the highest loadings were enriched for those annotated with GO-terms for carbohydrate metabolism, cellular respiration, protein transport and peroxisome function or

organisation. Closer inspection revealed that 3 h and 6 h time points on lignocellulose formed a subcluster C3a (Fig. 2b, indicated in dashed red), which largely consisted of the genes with the highest loading enriched for those annotated with GO-terms for fatty acid beta-oxidation, peroxisome organisation, cell division and cytoskeleton (re)organisation.

Lignocellulose samples at 24 h or later (except ILM and ILS 24 h) clustered together (Cluster C2). Genes with the highest ( $\geq 0.1$ ) loadings were enriched for those annotated with GO-terms for catabolism of polysaccharides, aromatic amino acids and other aromatic compounds, the biosynthesis of secondary metabolites as terpenoids and mycotoxins, modification of fungal cell walls, chromosome organisation and regulation of metabolic processes. This coincides with enrichment of oxidoreductase and glycoside hydrolase activity associated terms.

#### Initial response to lignocellulose involved increased fungal lipid metabolism

The initial transcriptional response to lignocellulose was conserved over feedstocks and pretreatment, as demonstrated by clustering of the early (3–6 h) time points in PCA and hierarchical clustering. For genes with reduced transcript levels, GO terms for RNA helicase activity were enriched at the 3 h time-point (Additional file 2: Table S1), as well as those for RNA processing—specifically processing and maturation of non-coding and ribosomal rRNA—and ribosomal subunit biogenesis, assembly and localisation, together suggesting a conserved reduction in overall translational activity upon transfer to lignocellulose. For genes with increased transcript levels, enriched GO-terms (Additional file 3: Table S2) strongly represented lipid catabolism, specifically fatty acid beta-oxidation and catabolism of the short chain fatty acid acetate (Fig. 3a). This is in accordance with the results from the PCA. In addition, the GO-term for branched-chain amino acid breakdown was enriched at the 3 h time points, which could be caused by breakdown products of valine and isoleucine which are processed via fatty acid beta-oxidation [48]. Metabolic mapping highlighted significant enrichment of the butanoate metabolic pathway, a short chain fatty acid, in the early time points, as well as gluconeogenesis pathway enrichment (Additional file 4: Table S3).

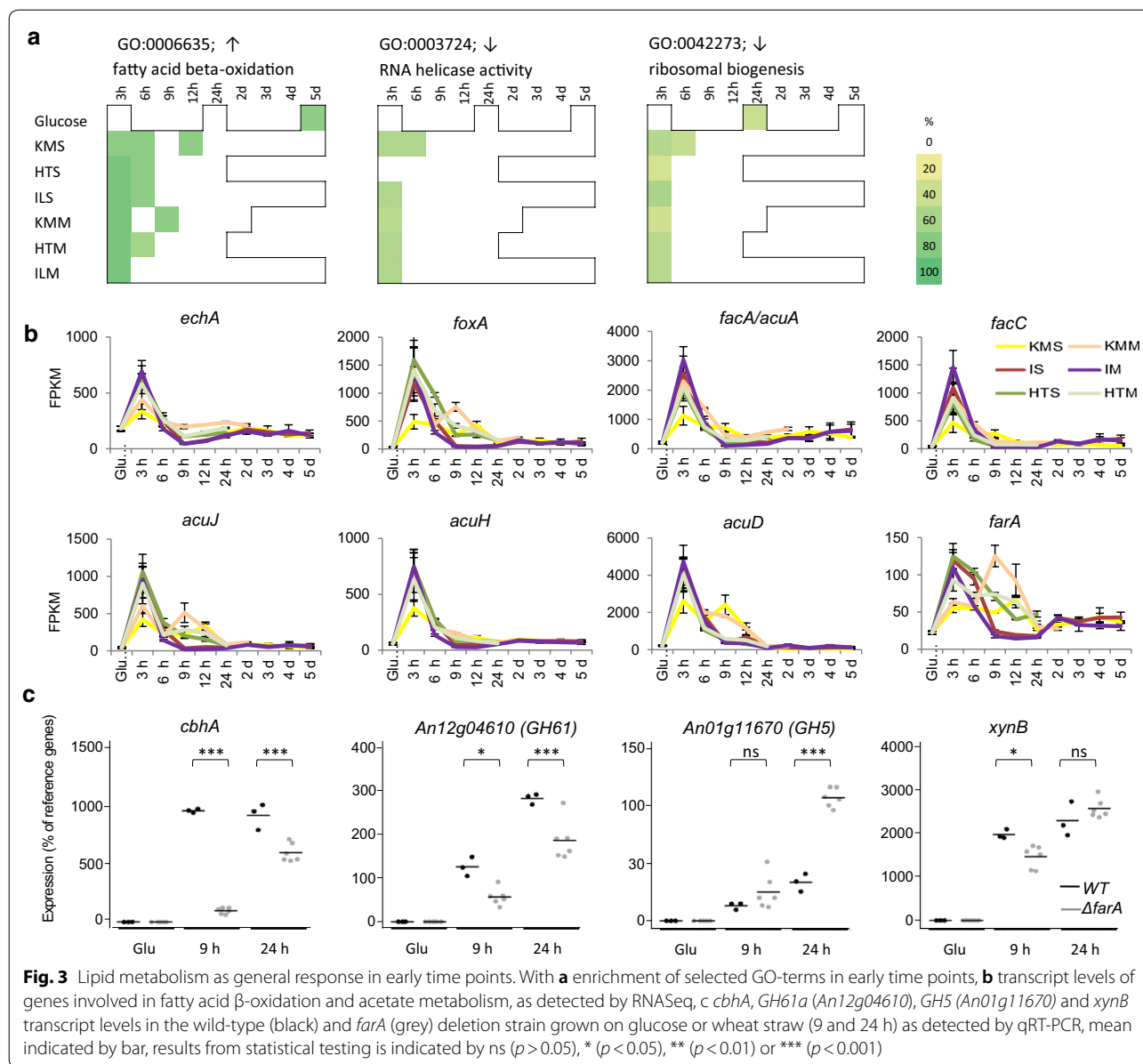
Fatty acid metabolism has been investigated most thoroughly in *A. nidulans*, and many orthologous genes are present in *A. niger*. Short chain fatty acids are oxidized to produce acetyl-CoA in the mitochondrion by, among others, ScdA and EchA, while long chain fatty acids are oxidised in the peroxisome by FaaB and FoxA [48, 49]. Transcript levels of corresponding *A. niger* genes (Fig. 3b) showed a peak at 3 h, indicating that both short-chain and

long-chain fatty acid beta-oxidation is activated. Acetyl-CoA is metabolised via the tricarboxylic acid (TCA) cycle in the mitochondrion. TCA cycle intermediates are used for gluconeogenesis, and are replenished in the peroxisome by AcuD and AcuE. To enable acetyl-CoA shuttling between cell compartments, carnitine acetyltransferases FacC, AcuJ [50, 51] interconvert acetyl-CoA and acetyl-carnitine, which can cross membranes using transporters such as AcuH. The *A. niger* genes encoding these proteins, as well as An11g02590.Aspni5\_55954, encoding PexK required for peroxisome biogenesis during fatty acid  $\beta$ -oxidation [52, 53], all show a similar expression profile with a peak at 3 h (Fig. 3b). Genes specific for acetate metabolism, *facC* [54], and *acuA* (ortholog of *A. nidulans facA*), also show a peak in transcript levels at the 3 h (Fig. 3b) indicating that the acetate metabolism pathway is specifically activated during early exposure to complex lignocellulose substrates.

Taken together these data strongly suggest that directly upon exposure to lignocellulose, fatty acid beta-oxidation and subsequent metabolism is increased. During the carbon-starved conditions experienced at that point, this could provide the fungus with a source of energy and result in the generation of glucose via gluconeogenesis. The response is conserved over all substrates analysed here, indicating a universal process consistent with the carbon starvation experience. In line with this, enrichment of almost all of these GO-terms was also observed in the 5 days glucose culture where glucose is depleted and increased transcription of genes linked to fatty acid metabolism in response to carbon starvation has been reported for *Aspergilli* [16, 55] as well as in other fungi [56, 57]. A role for carbon starvation in induction of plant polysaccharide degradative enzymes was previously established in *A. niger* [34, 38], *A. nidulans* [36, 37, 58] and *N. crassa* [28, 59], which involved low-level upregulation of a subset of genes encoding CAZymes active on plant polysaccharides, the ‘scouting enzymes’. Besides generating energy for cell maintenance, fatty acid metabolism may generate energy required for production of these scouting enzymes or assist in establishing fungal colonisation of lignocellulose. To test this hypothesis, we analysed the role of fatty acid metabolism in hydrolase production via deletion mutants of the ortholog of the *A. nidulans* gene *farA*, encoding the inducible regulatory activator responsive to both short- and long-chain fatty acids FarA [60].

#### The ortholog of *A. nidulans* FarA contributes to timely establishment of hydrolytic capacity

The expression of *farA* strongly increased at 3 and 6 h on all lignocellulose substrates, and in addition at 9 h for KMM (Fig. 3b). As this gene is the ortholog of the



**Fig. 3** Lipid metabolism as general response in early time points. With **a** enrichment of selected GO-terms in early time points, **b** transcript levels of genes involved in fatty acid  $\beta$ -oxidation and acetate metabolism, as detected by RNAseq, **c** *cbhA*, *GH61a* (*An12g04610*), *GH5* (*An01g11670*) and *xynB* transcript levels in the wild-type (black) and *farA* (grey) deletion strain grown on glucose or wheat straw (9 and 24 h) as detected by qRT-PCR, mean indicated by bar, results from statistical testing is indicated by ns ( $p > 0.05$ ), \* ( $p < 0.05$ ), \*\* ( $p < 0.01$ ) or \*\*\* ( $p < 0.001$ )

confirmed regulatory activator of fatty acid metabolism in *A. nidulans*, it was an ideal candidate to assess an influence of fatty acid metabolism in establishing hydrolytic capacity via *farA* deletion.

Gene expression in two independently generated *farA* deletion mutants and its wild-type parent strain were analysed by qRT-PCR after exposure to lignocellulose. After 9 h, the *farA* deletion strains had significantly ( $p < 0.05$ ) lower transcript levels for the cellulolytic enzyme encoding genes *cbhA* and *GH61a* (*An12g04610*): compared to the wild-type, mean levels of transcripts were 10-fold and twofold less induced respectively (Fig. 3c). After 24 h transcription levels of these genes

were more similar with <twofold difference. No pronounced differences ( $p > 0.05$  and/or <twofold change) were found for transcription of *xynA* or *xynB* at 9 h or 24 h, while transcript levels of GH5 *An01g11670* were similar in both strains at 9 h but were increased threefold in expression in the *farA* deletion strain after 24 h. These results indicate that the initial substrate-independent lipid metabolism via FarA affects the subsequent induction of a subset of genes encoding CAZymes during exposure to lignocellulose. The results also suggest the mechanism may not be via a direct effect on scouting enzyme transcript levels in early time points, as no difference for initial transcription levels of a GH5 scouting

enzyme was detected at 9 h. An indirect effect would be consistent with the lack of FarA binding sites (CCTCGG [60]) in the 1 kbp upstream promoter regions of the *cbhA* and *GH61a* genes. Rather, the effect could be through translational effects, or cumulative effects that eventually result in a delayed fungal lignocellulose colonisation and thus delayed induction of genes that encode enzymes routinely observed only under full induction on this substrate [34, 38], such as *cbhA* and *GH61a*.

#### Pretreatment and feedstock effects dominate gene expression in middle-stage cultures on lignocellulose

Our initial multivariate analysis indicated that the 9–12 h time points on all substrates represent established (middle stage) cultures on lignocellulose with the most active carbohydrate degradation and metabolism, cellular respiration and protein transport (Fig. 2). PCA analysis of gene expression levels indicated at least 27% of variation in gene expression in these time points resulted from differences between IL versus other cultures, with  $\geq 9\%$  of variation explained by HT versus other cultures and  $\geq 5\%$  by feedstock (Fig. 4a).

Genes with positive loadings in the PCA first component that distinguishes IL pretreatment from the other conditions, revealed high expression of a cluster of genes encoding proteins responsible for nitrate uptake and intracellular conversion to ammonium, including nitrate reductase *NiaD* and nitrite reductase *NiiA* [61]. High expression of this gene cluster was shared with the glucose cultures and with early KMS time points (Fig. 4b). When using nitrogen assimilation activity as a proxy for growth [62], this indicated fungal growth on IL pretreated substrates from 3 to 24 h, reflecting high digestibility of the IL pretreated substrates (Additional file 1: Fig. S1). Genes associated with HT pretreatment, with negative loadings in the second principle component, were enriched in GO-terms for phenylalanine catabolism and oxidoreductase activity.

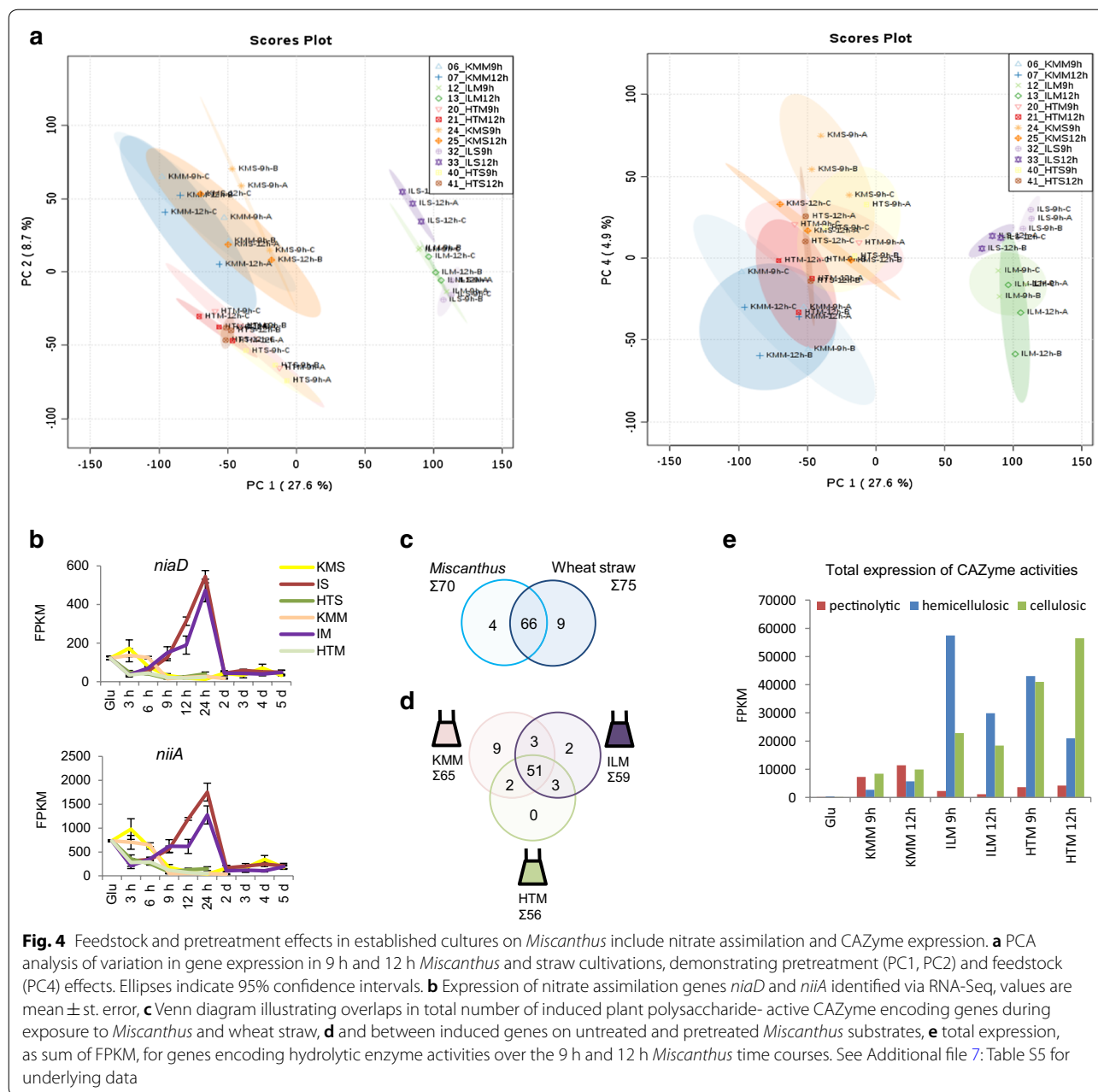
Genes linked to complex carbohydrate degradation had high loadings on the first principle component (IL pretreatment) and the fourth principle component, separating *Miscanthus* and wheat straw feedstocks. We therefore compared expression of genes encoding plant-polysaccharide degrading CAZymes that showed at least in one of the time-points a high-level induction compared to the glucose preculture (i.e. with a DESeq  $p_{adj} < 0.05$ , FPKM of  $\geq 50$  on lignocellulose and  $\log_2$  FC of  $\geq 3$ ) (Fig. 4c). The sum of transcript levels of genes encoding plant CAZymes formed a dome-shaped curve during exposure to lignocellulose (Additional file 5: Fig. S2b), with a dip in expression levels during the 12–24 h time points in ILM cultures similar as reported for ILS cultures [31], as high IL-pretreated substrate

digestibility resulted in accumulation of xylose to levels responsible [47] for carbon catabolite repression (Additional file 1: Fig S1). While the overall number of induced CAZyme-encoding genes was very similar on wheat straw and *Miscanthus*, the total expression level on KMM was reduced compared to KMS (Additional file 5: Fig. S2, Additional file 6: Table S4).

Over the time-course on *Miscanthus*, 70 CAZyme-encoding genes were induced (Fig. 4c, Additional file 7: Table S5). A core set of 51 genes encoding CAZymes with (putative) plant-polysaccharide degrading activity were induced both in cultures grown with untreated and pretreated *Miscanthus* (Fig. 4d). We detected nine genes that were specifically induced on KMM, including six pectinolytic genes. ILM specific induced genes included the  $\alpha$ -galactosidase encoding *aglB*, while the  $\alpha$ -xylosidase encoding *axlA* was ILM and HTM specific.

We compared the expression levels of the plant encoding CAZy genes induced at the 9 h and 12 h time points as these established cultures showed minimal transcriptional repression by CCR and overall high CAZyme expression levels. Considerably higher average expression levels were found after exposure to ILM and/or HTM when compared to KMM, with induction between 5- and 80-fold (Additional file 7: Table S5). Investigating the induced activities (Fig. 4e), a broad set of genes encoding hemicellulosic and cellulosic enzymes had much higher transcript abundance on pretreated substrates when compared to KMM, with ILM displaying the highest transcript abundance of genes encoding hemicellulosic enzymes and HTM the highest transcript abundance of genes encoding cellulosic enzymes. KMM on the other hand displayed the overall highest transcript abundance of genes encoding pectinolytic enzymes, in line with the number of pectinase-encoding genes expressed in this condition. Confirmation that these transcript abundance differences also translated into relative protein abundance and thus degradative capacity was obtained by targeted proteomics. Relative abundance of xylanolytic enzymes *XynA* and *XynB*, but not *XlnD* was found to be higher in culture filtrates of ILM and HTM compared to KMM (Additional file 8: Fig. S3). Cellulolytic *CbhA*, *EglA* and an AA9 putative LPMO, but not *CbhB* and *EglC*, were more abundant in filtrates of HTM than of KMM cultures. Pectinase *PelA* was most abundant in filtrates from KMM cultures (Additional file 8: Fig. S3).

The relatively abundant pectinase production on untreated *Miscanthus* was also observed on wheat straw (KMS) [31] and may be related to the reduction of pectin content by the pretreatments, and resultant lack of inducers for pectinase encoding genes [41]. HT-dependent higher production of cellulases could be explained by



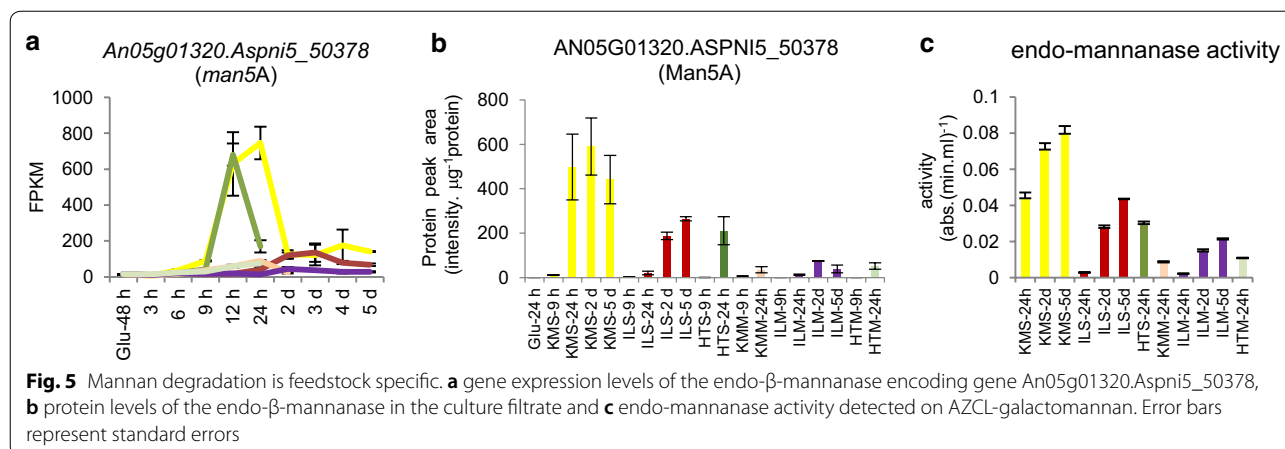
the relatively higher cellulose content of this substrate and its increased digestibility compared to KMM.

**Feedstock-specific enrichment for mannan degradation**

Comparing CAZy gene expression over the time course of cultivations on both wheat straw and *Miscanthus* feedstocks (Fig. 4c), mannan degradation was found to be feedstock-specific. Enrichment of its GO-term (GO:0046355) was specific to the untreated and pre-treated wheat straw cultures. Four of five genes annotated with the GO term for mannan degradation were

responsible for this enrichment (Additional file 3: Table S2). When looking at the expression profile of these genes in detail, induction of transcription of  $\beta$ -mannosidase *mndA* was straw specific, while endo- $\beta$ -mannanase encoding *man5A* had much higher transcript levels on wheat straw, especially KMS and HTS, compared to *Miscanthus* (Fig. 5a). Targeted proteomics showed a similar trend for the abundance of this protein in the culture filtrate (Fig. 5b) and endo-mannanase activity was detected at higher levels in wheat straw culture filtrates compared to the *Miscanthus* culture filtrates





(Fig. 5c). These results confirm the up-regulation of endo- $\beta$ -mannanase activity is feedstock-specific. Three out of four of the genes responsible for enrichment of the GO term are inducible by mannose or mannan [41]. Mannan content of wheat straw and *Miscanthus* is very low [63] and perhaps instead increased accessibility of the mannan in the wheat straw could be a contributory factor to the observed distinct activation of mannan degradation. Mannan-derived compounds such as mannobiose may induce genes encoding mannan-degrading enzymes via ClrB [64], the ortholog of *Aspergillus oryzae* ManR, *A. nidulans* ClrB and *Neurospora crassa* CLR-2. As the level of transcriptional response of this regulator to inducers does not seem to be conserved between fungal species and the regulatory pathway overlaps with that of cellulose degradation [13, 59, 65, 66], it is not straightforward to link *A. niger* *clrB* transcription to expression of its regulatory targets and we have in our experimental conditions not identified such a correlation.

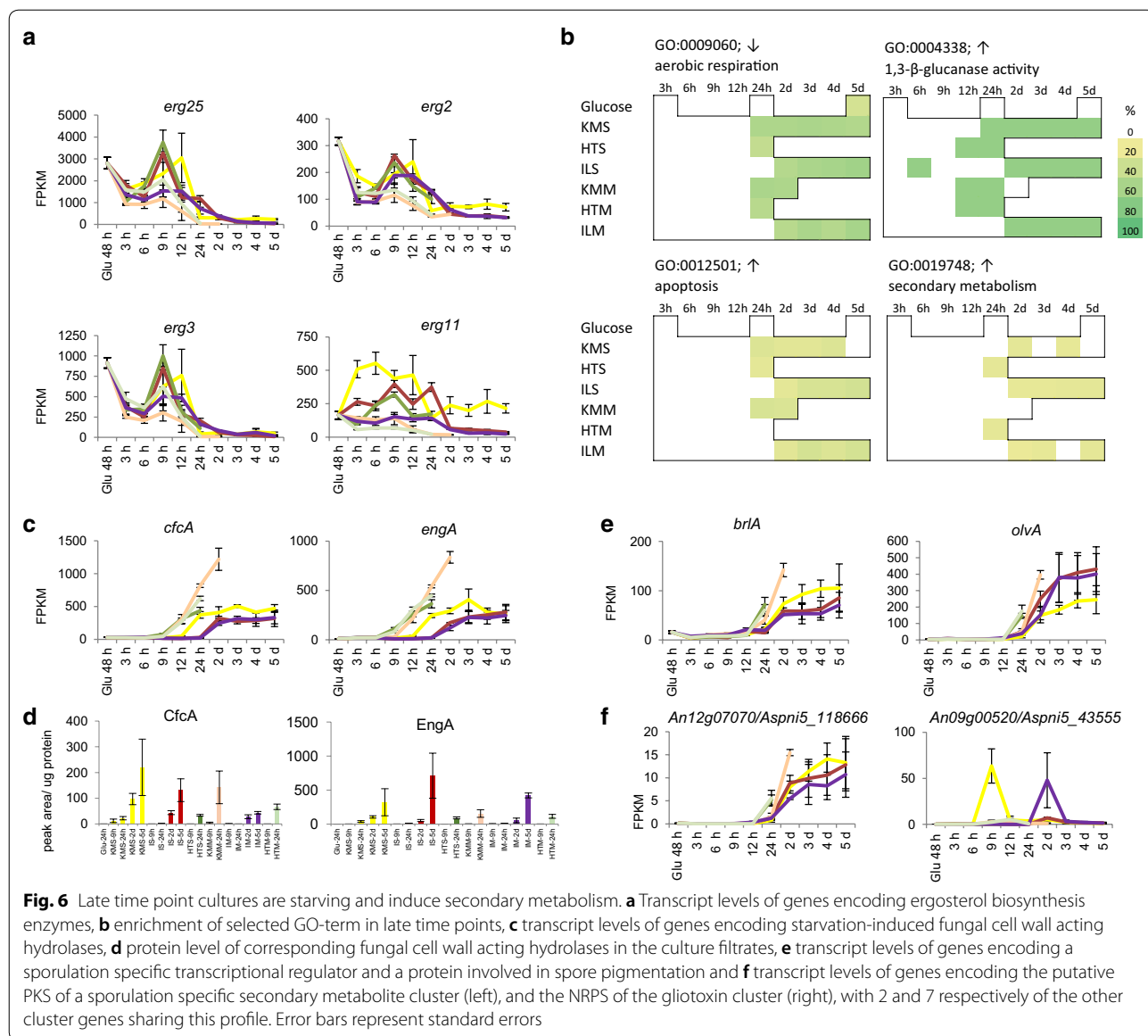
### Transition to starvation and sporulation

The high-level transcription of plant biomass degrading CAZy genes was not sustained across the time-course. A feedstock independent transition to reduced enzyme expression and activation of starvation, sporulation and secondary metabolism occurred between 12 and 24 h (KM and HT) or 24 h–2 days (IL), as indicated by hierarchical clustering and PCA (Fig. 2).

The transcriptomic data indicated limited growth and primary metabolic activity at the later time points. Expression of nitrogen assimilation related genes such as *niiA* and *niaD* was limited (Fig. 4b) and expression of the genes encoding key biosynthesis enzymes for the fungal cell membrane component ergosterol (*erg2*, *erg3*, *erg11* and *erg25*) was considerably reduced (Fig. 6a). In agreement, steroid biosynthesis (KEGG rn00100) was enriched in the metabolic mapping in pre-, but not

post-24 h time points. As ergosterol is a marker for fungal biomass [67] the depletion of transcripts suggests limited fungal growth after the transition point. During late ( $\geq 24$  h) time points GO-terms suggested a low metabolic activity: terms enriched in genes with reduced transcript levels included aerobic respiration, specifically citric acid (TCA) cycle and acetyl coenzyme A degradation, oxidative phosphorylation and ATP synthesis (Fig. 6b).

Indications for starvation and stress in the late time point cultures were found through enrichment of the following GO-terms among genes with increased transcript levels: retrograde vesicle recycling in the Golgi, (non-glycolytic) fermentation and ionic osmotic (saline) stress responses, cell death, DNA modification, lipid metabolism and fungal cell wall acting enzymes (Fig. 6b). Starvation and stress occurred later in the IL pretreated compared to HT or untreated cultures, consistent with ILS and ILM having increased digestibility. Fungal cell wall-acting CAZymes encoding genes that are responsive to carbon starvation, such as *cfcA/chilB* and *engA* have high transcript levels from 12 h (HT, KMM), 24 h (KMS) or 2 d (IL) (Fig. 6c) with corresponding accumulation of proteins (Fig. 6d). Starting from 24 h (HT, KM) or 2 days (IL) cultures, transcript levels were strongly increased for genes encoding sporulation transcriptional activators (*brlA*, *abaA*), pigment synthetic enzymes (*fwnA*, *brnA*, *olvA*), hydrophobins (predominantly *hfbA*, *hfbB*, *hyp1*) and sporulation-specific cell wall modifying CAZymes (*ctcB*, *bgtD*), indicating sporulation was taking place (Fig. 6e). GO-terms for breakdown of aromatic amino acids (phenylalanine, tyrosine, tryptophan) were enriched at most of the time-points without high monomeric sugar levels. These GO-terms share common genes that belong to the tyrosine-phenylalanine metabolism gene cluster. Transcription of these genes was co-regulated and was most abundant on later ( $\geq 24$  h) time points. Together this indicates that the late time points



**Fig. 6** Late time point cultures are starving and induce secondary metabolism. **a** Transcript levels of genes encoding ergosterol biosynthesis enzymes, **b** enrichment of selected GO-term in late time points, **c** transcript levels of genes encoding starvation-induced fungal cell wall acting hydrolases, **d** protein level of corresponding fungal cell wall acting hydrolases in the culture filtrates, **e** transcript levels of genes encoding a sporulation specific transcriptional regulator and a protein involved in spore pigmentation and **f** transcript levels of genes encoding the putative PKS of a sporulation specific secondary metabolite cluster (left), and the NRPS of the gliotoxin cluster (right), with 2 and 7 respectively of the other cluster genes sharing this profile. Error bars represent standard errors

represent carbon-limited fungal cultures with limited growth, which activated survival strategies such as sporulation and secondary metabolism.

**Novel and known secondary metabolite gene clusters induced at later time points**

Fungal secondary metabolites attract high interest due to their potential bioactive properties [68]. *A. niger* contains many secondary metabolite gene clusters [68, 69] of which for many their products are so far unknown. The production of secondary metabolites has been reported in some instances to be linked to starvation and sporulation but for a large number of metabolite clusters no conditions have been identified under which they are

expressed. Our lignocellulose time-courses represent a range of novel conditions that could stimulate the fungus to generate secondary metabolites and we therefore assessed expression of secondary metabolite generating gene clusters predicted in the *A. niger* genome (Additional file 9: Table S6).

The GO-term for secondary metabolism was enriched most notably in the ILM and ILS time courses (Fig. 6b). Eight genes from the gene cluster encoding proteins for production of the toxin fumonisin (An01g06810-An01g06970), although not the PKS-encoding gene, were strongly induced on the 2 d ILS cultures and to a more moderate level in 2 d ILM (Additional file 9: Table S6). Seven genes from cluster An09g00520-An09g00620,

including the gene with strong similarity to *gliC* of the *A. fumigatus* gliotoxin synthesis gene cluster [70], showed a pronounced increase in transcription levels at the 9 h KMS and ILM 2 days time points, as well as some increases on ILS 2 days (Fig. 6f). This peculiar transcript profile was shared with two genes (An01g06150 and An08g06810) involved in the shikimate pathway, which generates chorismate that feeds into biosynthesis of aromatic amino acids such as phenylalanine, one of the two amino acids that are condensed to produce gliotoxin. Metabolic mapping also pointed towards enrichment of the shikimate pathway (part of KEGG pathway rn00400). The secondary metabolite cluster An11g06420-An11g06490 showed strong induction from IL 2 and 3 days, as well as some expression on later IL time points and on KMS from 24 h onwards. This cluster was also induced in *A. niger* in mixed-species cultures on wheat straw [71]. An orthologous hybrid PKS/NRPS is required for production of pseurotin A in *A. fumigatus*, and is induced in response to hypoxia and the anti-fungal drug voriconazole [69, 72, 73]. The uncharacterised NRPS encoding An13g03040 as well as seven genes of this cluster expressed specifically in the 2 days IL and 2 d KMS conditions. Expression of the uncharacterised cluster An12g07060-An12g07110 [74] increased to considerable levels on late cultivation time points (Fig. 6f). The transcription profile of this cluster's PKS-encoding gene correlated with that encoding the FwnA PKS involved in production of spore pigmentation, as did backbone synthase genes from five other gene clusters (Pearson correlation coefficient  $0.78 \pm 0.13$  (mean  $\pm$  stdev)). This suggests their transcription may be sporulation-related, which is consistent with conditions in which Pyranonigrin A has been detected [75], the antioxidant generated by the only characterised gene cluster of this group. Overall, the transcriptomic data indicated activation of the production of potentially new as well as known secondary metabolites, confirming that cultivation with plant biomass can provide unique conditions for the induction of secondary metabolite gene clusters in fungi, which can be further evaluated as candidates for exploitation in biotechnology. In the natural habitat of *A. niger*, such metabolites may function in interaction with other organisms [76], as e.g. signalling molecule or antibiotic, or provide protection against harmful conditions (e.g. antioxidants), and thereby contribute to fungal survival.

## Conclusions

The transcriptional response of *A. niger* to lignocellulose adapted over the cultivation time-course, and could overall be divided into three stages: an initial (3–6 h) conserved response, followed by a substrate and pretreatment-specific response (generally 9–24 h) and a final

largely conserved response (generally 24 h–5 days) albeit with variable elements, as summarised in Fig. 7.

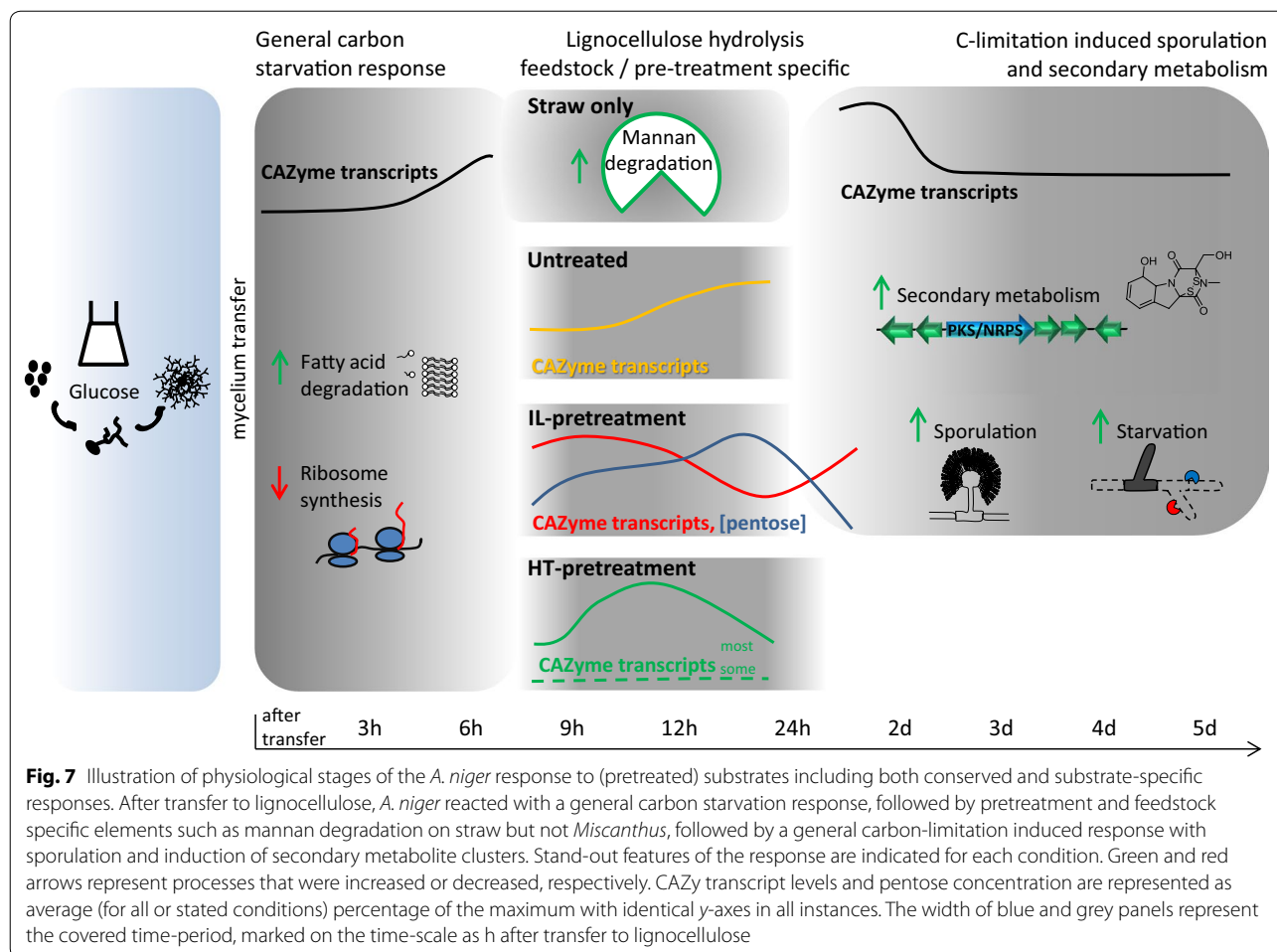
Initially fatty-acid  $\beta$ -oxidation was activated and a role in timely establishment of lignocellulose degradative capacity was identified. In nature, this response may be part of a mechanism contributing to fungal survival in a habitat with a highly fluctuating and often limited availability of carbon sources. Subsequently a substrate hydrolytic stage was activated that was mainly directed by substrate properties such as composition and digestibility. Subsequently, sporulation was activated, and the transcriptome data indicated this was in response to reduced metabolic activity and carbon limitation in the culture. This study emphasises the value of high-resolution time-courses when studying fungal responses to lignocellulose, to ensure confidence in identification of all involved enzymes that may be expressed, and importantly, to understand more broadly the range and dynamics of the fungal physiology on a systems level. Ultimately, improved understanding of these responses should improve the efficiency of strain and enzyme developments for renewables-based biotechnology.

We identified a range of secondary metabolite gene clusters that were activated during exposure to lignocellulose, including multiple clusters so far without product characterisation. Secondary metabolite gene clusters attract significant interest for generating novel potentially bioactive compounds and as a source of biocatalytic enzymes. We are therefore confident that the expression conditions for these novel clusters identified here will receive interest by providing opportunities for their further characterisation and exploitation.

## Methods

### Substrates and pretreatments

*Miscanthus* (cv. Giganteus) was ground to pass an 0.5 mm sieve as described previously [31]. The ionic liquid (IL) pretreatment was performed using 1-ethyl-3-methylimidazolium acetate ([C2mim][OAc]) for 2 h at 160 °C and hydrothermal treatment was performed at 200 °C for 2 h, as described in detail previously for wheat straw [31]. The compositional and structural analysis of substrates was performed as described in detail previously for wheat straw [31], employing total acid hydrolysis assay followed by analysis of soluble sugar monomers in the hydrolysate by high-performance anion exchange chromatography with pulsed amperometric detection (HPAEC-PAD), and wide-angle X-ray diffraction. Digestibility of the substrates was assessed in saccharification assays with a commercial enzyme mixture (Celluclast (Sigma) and Novozyme 188 (Sigma), 1:1 v/v), as well as by measurement of



**Fig. 7** Illustration of physiological stages of the *A. niger* response to (pretreated) substrates including both conserved and substrate-specific responses. After transfer to lignocellulose, *A. niger* reacted with a general carbon starvation response, followed by pretreatment and feedstock specific elements such as mannan degradation on straw but not *Miscanthus*, followed by a general carbon-limitation induced response with sporulation and induction of secondary metabolite clusters. Stand-out features of the response are indicated for each condition. Green and red arrows represent processes that were increased or decreased, respectively. CAZy transcript levels and pentose concentration are represented as average (for all or stated conditions) percentage of the maximum with identical y-axes in all instances. The width of blue and grey panels represent the covered time-period, marked on the time-scale as h after transfer to lignocellulose

residual xylose in solids of shake-flask cultures during fungal exposure [31].

### Fungal cultivation conditions

Cultivations were performed as described before [31]. Briefly, 1% w/v glucose cultures were inoculated with *A. niger* N402 spores at a final concentration of  $1 \times 10^6 \text{ ml}^{-1}$  and incubated at 28 °C for 48 h. The mycelia were collected and 1.5 g wet weight was transferred to flasks containing one of the following carbon sources at a 1% w/v final concentration in AMM: glucose, untreated *Miscanthus*, ionic liquid pretreated *Miscanthus* or hydrothermally pretreated *Miscanthus*. The cultures were incubated for 3 h, 6 h, 9 h, 12 h, 24 h, 2 d, 3 d, 4 d or 5 d. Mycelia were collected for RNA extraction and the filtrate of the culture was flash frozen in liquid nitrogen and stored at  $-80 \text{ °C}$  for subsequent sugar and targeted proteomics analyses, both performed as described [31].

### Gene expression analysis

RNA extraction, Illumina paired-end sequencing, read mapping to the *A. niger* ATCC 1015 strain and statistical analysis were all performed as described in detail before using a DESeq 2  $p_{\text{adj}}$  value  $< 0.05$  to identify differentially expressed genes between pairs of conditions [31]. The obtained data were analysed together with those obtained from cultivation with untreated and pretreated wheat straw [31] under identical conditions. Additional file 10: Table S7 contains the FPKM values for each sample with *Miscanthus* as feedstock as well as the DESeq 2 analysis for the comparison of each condition with the Glu 48 h control. Clustering and Gene Ontology (GO) enrichment analysis was performed as described before [31] using the combined dataset including wheat straw and *Miscanthus* derived samples. In short, hierarchical clustering of log transformed gene expression values (FPKM) of all 47 conditions with R package gplots. GO enrichment analysis was performed using the Bioconductor package Goseq (v1.18.0) [77] using GO annotations from the FetGOat resource (<http://www.broadinstitute>).

[org/fetgoat/](https://www.fetgoat.org/fetgoat/) [78], and comparing to the Glu 48 h control for each condition the genes with a log<sub>2</sub> fold change (i.e. DESeq 2 of  $\leq -1$  or  $\geq 1$ ),  $p_{\text{adj}} \leq 0.05$  and an FPKM  $\geq 1$  in at least 1 condition. PCA analysis was performed using the MetaboAnalyst package [79, 80], using log transformed, mean centered FPKM values of triplicate conditions. Genes with high calculated loadings are analysed for GO-enrichment using g:Profiler [81], results were summarised using REVIGO [82] and subsequently visualised using <https://www.jasondavies.com/wordcloud/> to generate word clouds.

### Mapping transcript level data to a genome-wide metabolic model

In order to analyse gene expression data on a metabolic network we used a CoReCo created genome wide metabolic model of *A. niger* [83]. For each enzyme commission (EC) number in the model an arbitrary enzyme expression value was created by taking the expression value of the responsible gene or taking the highest value when multiple genes were mapped to one EC number. The resulting EC expression data matrix was then explored using principal component analysis and Bayesian Hierarchical Clustering [84], followed by mapping of the EC cluster content to pre-defined pathways in KEGG [85] and Metacyc [86] databases. Enrichment of EC cluster members on predefined pathways was quantified with the hypergeometric test.

### Analysis of gene expression in *farA* deletion strain

The wild-type strain N402 and two independent *farA* deletion strains (MA537.3 and MA537.4, kindly provided by Dr A. Ram, University of Leiden, the Netherlands) were grown in liquid cultures in triplicate as described above using 1% ball milled wheat straw as substrate. After 9 h and 24 h, mycelium was harvested and RNA was isolated as described above. qRT-PCR was performed as described previously [31] but with PCR products as a standard, using 0.5  $\mu\text{l}$  of cDNA and the primers specified in Additional file 11: Table S8. Gene expression values are normalised via the expression of *actA* and *sarA*, two genes that were previously reported to be stable reference genes suitable for data normalisation in qRT-PCR experiments [87, 88]. Statistical significance of differences in gene expression was tested with a one-way ANOVA with post hoc multiple comparisons test.

### Enzyme assays

For the enzyme assays with AZCL dyed galactomannan (I-AZGMA, Megazyme), appropriate volumes of the concentrated culture filtrates were incubated for 3 h at 28 °C with 150 rpm shaking with 1% w/v concentration of the dyed substrate in 100 mM sodium acetate pH

4.5 in a total volume of 250  $\mu\text{l}$  in 96 well plates. Reactions were stopped with 2% Trizma base as per manufacturer's instructions and absorbance was measured at 590 nm with a plate reader.

## Supplementary information

**Supplementary information** accompanies this paper at <https://doi.org/10.1186/s13068-020-01702-2>.

**Additional file 1: Figure S1.** Characterisation of untreated and pretreated *Miscanthus* substrates. **a** Carbohydrate monomer composition of substrates, **b** substrate crystallinity with the predominant type of cellulose indicated **c** saccharification of substrates using commercial enzymes given as mean ( $n = 3$ )  $\pm$  SE of released glucose and xylose after 72 h, **d** xylan in initial substrates and residual xylan from the solids recovered from the fungal cultures after 24 h and 5 d (where available), given as mean ( $n = 3$ )  $\pm$  SE of biological replicate flasks or for the initial substrates as the mean  $\pm$  SE of 2 technical hydrolysis replicates, **e** monosaccharide concentration in the fungal culture filtrates over time, given as mean ( $n = 3$ )  $\pm$  SE with A/C only = autoclaved substrate only.

**Additional file 2: Table S1.** File with lists of enriched GO terms in genes with reduced transcript abundance. Enriched GO terms (and the genes in the list responsible for the enrichment) from the enrichment analysis of the genes that were repressed in the comparison of the Glu 48 h control with untreated and pretreated *Miscanthus*.

**Additional file 3: Table S2.** File with lists of enriched GO terms in genes with increased transcript abundance. Enriched GO terms (and the genes in the list responsible for the enrichment) from the enrichment analysis of the genes that were induced in the comparison of the Glu 48 h control with untreated and pretreated *Miscanthus*.

**Additional file 4: Table S3.** Mapping transcript level data to a genome-wide metabolic model. Gene transcript levels were mapped to enzyme activities, and converted to an expression value per enzyme activity (ECx.x.x) number. Genes mapped to the EC number are indicated. Pathways are listed that were found significantly enriched in clusters after mapping of the activities to databases with metabolic pathways, as well as an overview of all KEGG pathways to which EC numbers were mapped.

**Additional file 5: Figure S2.** Expression of CAZyme encoding genes over *Miscanthus* time courses. **a** The total number of genes encoding plant-polysaccharide active CAZymes and that are significantly induced in cultures with untreated and pretreated *Miscanthus* as compared to the Glu 48 h control (DESeq  $p_{\text{adj}} < 0.05$ , FPKM of  $\geq 50$  on lignocellulose and log<sub>2</sub> FC of  $\geq 3$ ). Values are mean  $\pm$  standard errors ( $n = 3$ ). **b** The proportion of transcripts from these CAZyme genes as percentage of total FPKMs. Error bars represent standard errors ( $n = 3$ ). Colors indicate different culture condition groups and values in light grey are a comparison to the same data when using wheat straw as feedstock [31].

**Additional file 6: Table S4.** PCA loadings and enrichment of GO-terms in genes distinguishing sample clusters. Loadings of genes on the first 10 components are given of the PCA analysis of all cultivation conditions, and of those from the 9 h and 12 h time points of the *Miscanthus* time course. Results are included of GO-enrichment analysis (via g:Profiler) of genes with high loadings on the PCA components corresponding to the sample clusters identified in Fig. 2, i.e. Cluster 1 PCA1 < 0 PCA2 < 0; Cluster 2 PCA1 > 0; Cluster 3 PCA1 < 0 PCA2 > 0; Cluster 3a PCA1 < 0 PCA > 0 PCA3 > 0. GO-enrichment analysis are also included for 9 h and 12 h *Miscanthus* conditions PCA1 < 0 PCA2 < 0 (HTM specific) and for PCA4 > 0 (Wheat straw specific).

**Additional file 7: Table S5.** Data supporting CAZyme expression analysis. Gene lists used to generate Venn diagrams depicted in Fig. 5c and d are given including Venn diagram intersections, the CAZyme encoding genes, FPKM transcription levels and classification underlying Fig. 4e are given, as are gene identifiers corresponding to proteins targeted with proteomics (Additional file 8: Fig. S3).

**Additional file 8: Figure S3.** Targeted proteomics of selected proteins over the *Miscanthus* time courses. Relative abundance of the indicated enzymes are given as peak area corrected for total protein amount in culture filtrate. Values are given as mean  $\pm$  st. error ( $n = 3$ ) and gene identifiers corresponding to the proteins are given in Additional file 7: Table S5.

**Additional file 9: Table S6.** Secondary metabolite gene clusters expressed under lignocellulose conditions, as identified by RNA-Seq. Genes encoding backbone enzymes and cluster borders were based on Inglis et al. (69), backbone enzyme type and product were taken from Romsdahl et al. (74). Co-expression of genes belonging to each cluster, including backbone-encoding genes, is indicated in a summary column. Gene expression values are given as mean of FPKM values per condition.

**Additional file 10: Table S7.** Gene expression as identified by RNA-Seq, and corresponding statistical analysis. Gene identifiers and annotations are provided along with the FPKM values for each sample and condition, the fold change and  $p_{\text{adj}}$  values as calculated by DESeq 2 for the comparison between the Glu 48 h control and the other conditions.

**Additional file 11: Table S8.** Primers used for qRT-PCR analysis. Nucleotide sequences of primers are given together with gene identifiers.

## Abbreviations

CAZY: Carbohydrate-active enzymes; CCR: Carbon catabolite repression; FPKM: Fragments per kilobase of gene model per million mapped fragments; GO: Gene ontology; HPAEC-PAD: High-performance anion exchange chromatography with pulsed amperometric detection; HT: Hydrothermal; HTS: Hydrothermally pretreated straw; HTSM: Hydrothermally pretreated *Miscanthus*; IL: Ionic liquid; ILS: Ionic liquid-pretreated straw; ILM: Ionic liquid-pretreated *Miscanthus*; KMS: Knife-milled (untreated) straw; KMM: Knife-milled (untreated) *Miscanthus*; MWCO: Molecular weight cut-off; NRPS: Nonribosomal peptide synthetases;  $p_{\text{adj}}$ :  $P$  value from DESeq statistical analysis adjusted for multiple hypothesis testing; PCA: Principal component analysis; PKS: Polyketide synthases; SignalP: Signal peptide; TCA: Tricarboxylic acid.

## Acknowledgements

We thank Dr. Sarah Purdy for the *Miscanthus* substrate and Yvonne Arendsen, Dr. Noel van Peij and Dr. Herman Pel (DSM, the Netherlands), Mark Arentshorst and Dr. Arthur Ram (Leiden University) for making the *farA* deletion strains available.

## Authors' contributions

STP, SD, DBA, GAT and BAS conceived the RNAseq experiment. PD, JMvM, MK performed fungal culture work and RNA and protein sample preparation. RI and SG prepared lignocellulosic substrates and performed compositional analyses. IVG, KWB, EL and CYN coordinated the RNAseq work at the JGI. AL and VRS performed bioinformatic analysis at the JGI. MJB performed clustering, enrichment analysis using the RNAseq data. JMvM performed multivariate analysis of RNAseq data. PD and JMvM analyzed the data. PD, JMvM, DBA wrote the manuscript. RR, PD and JMvM performed experiments with the *farA* deletion strain. CJP coordinated the targeted proteomics work at JBEI. CJP and LC performed the targeted proteomics work at JBEI. MA performed mapping of transcript data to the metabolic model. All authors read and approved the final manuscript.

## Funding

This work was financially supported by the UK Biotechnology and Biological Sciences Research Council (BBSRC), (BB/G01616X/1, BB/K01434X/1 and BB/P011462/1). This work was part of the DOE Joint BioEnergy Institute (<http://www.jbei.org>) supported by the U. S. Department of Energy, Office of Science, Office of Biological and Environmental Research, through contract DE-AC02-05CH11231 between Lawrence Berkeley National Laboratory and the U. S. Department of Energy. The work conducted by the U.S. Department of Energy Joint Genome Institute, a DOE Office of Science User Facility, was supported by the Office of Science of the U.S. Department of Energy under Contract No. DE-AC02-05CH11231. PD was also supported by a grant of the Netherlands Scientific Organization NWO 824.15.023. The funders had no roles in study design, data collection and analysis, decision to publish, or preparation of the manuscript.

## Availability of data and materials

The RNA-seq reads supporting the conclusions of this article are available in the BioProject repository accession PRJNA250529, <http://www.ncbi.nlm.nih.gov/bioproject/PRJNA250529>. Other datasets supporting the conclusions of this article are included within the article and its additional files.

## Ethics approval and consent to participate

Not applicable.

## Consent for publication

Not applicable.

## Competing interests

The authors declare that they have no competing interests.

## Author details

<sup>1</sup> School of Life Sciences, University of Nottingham, University Park, Nottingham NG7 2RD, UK. <sup>2</sup> Manchester Institute of Biotechnology (MIB) & School of Chemistry, The University of Manchester, Manchester M1 7DN, UK. <sup>3</sup> Fungal Physiology, Westerdijk Fungal Biodiversity Institute & Fungal Molecular Physiology, Utrecht University, Uppsalalaan 8, 3584 CT Utrecht, The Netherlands. <sup>4</sup> Deep Seq, Faculty of Medicine and Health Sciences, Queen's Medical Centre, University of Nottingham, Nottingham NG7 2UH, UK. <sup>5</sup> School of Biosciences, University of Nottingham, Sutton Bonington Campus, Loughborough LE12 5RD, UK. <sup>6</sup> US Department of Energy Joint Genome Institute, Lawrence Berkeley National Laboratory, Berkeley, CA 94598, USA. <sup>7</sup> Joint BioEnergy Institute, Emeryville, CA 94608, USA. <sup>8</sup> VTT Technical Research Centre of Finland, Tietotie 2, P.O. Box FI-1000, 02044 VTT Espoo, Finland. <sup>9</sup> Present Address: Public Health England, National Infection Service, Salisbury, UK. <sup>10</sup> Present Address: Laboratory of Computational and Quantitative Biology, Sorbonne Université, CNRS, Institut de Biologie Paris-Seine, 75005 Paris, France. <sup>11</sup> Present Address: Institute of Plant Protection, Jiangsu Academy of Agricultural Sciences, Nanjing, People's Republic of China.

Received: 15 January 2020 Accepted: 24 March 2020

Published online: 13 April 2020

## References

- Ragauskas AJ, Williams CK, Davison BH, Britovsek G, Cairney J, Eckert CA, et al. The path forward for biofuels and biomaterials. *Science*. 2006;311(5760):484–9.
- Laskar DD, Yang B, Wang H, Lee J. Pathways for biomass-derived lignin to hydrocarbon fuels. *Biofuels* Bioprod Bioref. 2013;7(5):602–26.
- Blanch HW, Simmons BA, Klein-Marcuschamer D. Biomass deconstruction to sugars. *Biotechnol J*. 2011;6(9):1086–102.
- Somerville C, Youngs H, Taylor C, Davis SC, Long SP. Feedstocks for lignocellulosic biofuels. *Science*. 2010;329(5993):790–2.
- Himmel ME, Ding SY, Johnson DK, Adney WS, Nimlos MR, Brady JW, et al. Biomass recalcitrance: engineering plants and enzymes for biofuels production. *Science*. 2007;315(5813):804–7.
- Chundawat SPS, Beckham GT, Himmel ME, Dale BE. Deconstruction of lignocellulosic biomass to fuels and chemicals. *Annu Rev Chem Biomol Eng*. 2011;2(1):121–45.
- Glass NL, Schmol M, Cate JHD, Coradetti S. Plant cell wall deconstruction by ascomycete fungi. *Annu Rev Microbiol*. 2013;67(1):477–98.
- Zhang J, Presley GN, Hammel KE, Ryu J-S, Menke JR, Figueroa M, et al. Localizing gene regulation reveals a staggered wood decay mechanism for the brown rot fungus *Postia placenta*. *Proc Natl Acad Sci*. 2016;113(39):10968–73.
- Solomon KV, Haitjema CH, Henske JK, Gilmore SP, Borges-Rivera D, Lipzen A, et al. Early-branching gut fungi possess a large, comprehensive array of biomass-degrading enzymes. *Science*. 2016;351(6278):1192–5.
- van den Brink J, de Vries RP. Fungal enzyme sets for plant polysaccharide degradation. *Appl Microbiol Biotechnol*. 2011;91(6):1477–92.
- Lange L, Barrett K, Pilgaard B, Gleason F, Tsang A. Enzymes of early-diverging, zoospore fungi. *Appl Microbiol Biotechnol*. 2019;103(17):6885–902.
- Zhao Z, Liu H, Wang C, Xu J-R. Comparative analysis of fungal genomes reveals different plant cell wall degrading capacity in fungi. *BMC Genomics*. 2013;14:274.

13. Hassan L, Lin L, Sorek H, Sperl LE, Goudoulas T, Hagn F, et al. Cross-talk of cellulose and mannan perception pathways leads to inhibition of cellulase production in several filamentous fungi. *MBio*. 2019;10(4):e00277–319.
14. Daly P, Van Munster JM, Raulo R, Archer DB. Transcriptional regulation and responses in filamentous fungi exposed to lignocellulose. Vol. 1, *Mycology: Current and Future Developments*. 2015.
15. Castellanos F, Schmoll M, Martinez P, Tisch D, Kubicek CP, Herrera-Estrella A, et al. Crucial factors of the light perception machinery and their impact on growth and cellulase gene transcription in *Trichoderma reesei*. *Fungal Genet Biol*. 2010;47(5):468–76.
16. Nitsche BM, Jørgensen TR, Akeroyd M, Meyer V, Ram AFJ. The carbon starvation response of *Aspergillus niger* during submerged cultivation: insights from the transcriptome and secretome. *BMC Genomics*. 2012;13:380.
17. Alazi E, Ram AFJ. Modulating transcriptional regulation of plant biomass degrading enzyme networks for rational design of industrial fungal strains. *Front Bioeng Biotechnol*. 2018;6:133.
18. Schuster A, Schmoll M. Biology and biotechnology of *Trichoderma*. *Appl Microbiol Biotechnol*. 2010;87(3):787–99.
19. Cairns TC, Nai C, Meyer V. How a fungus shapes biotechnology: 100 years of *Aspergillus niger* research. *Fungal Biol Biotechnol*. 2018;5(1):13.
20. Chen F, Dixon RA. Lignin modification improves fermentable sugar yields for biofuel production. *Nat Biotechnol*. 2007;25(7):759–61.
21. Yang H, Zhang X, Luo H, Liu B, Shiga TM, Li X, et al. Overcoming cellulose recalcitrance in woody biomass for the lignin-first biorefinery. *Biotechnol Biofuels*. 2019;12(1):171.
22. Kim KH, Eudes A, Jeong K, Yoo CG, Kim CS, Ragauskas A. Integration of renewable deep eutectic solvents with engineered biomass to achieve a closed-loop biorefinery. *Proc Natl Acad Sci*. 2019;116(28):13816–24.
23. Ibbett R, Gaddipati S, Davies S, Hill S, Tucker G. The mechanisms of hydrothermal deconstruction of lignocellulose: new insights from thermal-analytical and complementary studies. *Bioresour Technol*. 2011;102(19):9272–8.
24. Ibbett R, Gaddipati S, Hill S, Tucker G. Structural reorganisation of cellulose fibrils in hydrothermally deconstructed lignocellulosic biomass and relationships with enzyme digestibility. *Biotechnol Biofuels*. 2013;6(1):33.
25. Brandt A, Gräsvik J, Hallett JP, Welton T. Deconstruction of lignocellulosic biomass with ionic liquids. *Green Chem*. 2013;15(3):550–83.
26. De Souza AP, Kamei CLA, Torres AF, Pattathil S, Hahn MG, Trindade LM, et al. How cell wall complexity influences saccharification efficiency in *Miscanthus sinensis*. *J Exp Bot*. 2015;66(14):4351–65.
27. Andersen MR, Giese M, de Vries RP, Nielsen J. Mapping the polysaccharide degradation potential of *Aspergillus niger*. *BMC Genomics*. 2012;13(1):313.
28. Benz JP, Chau BH, Zheng D, Bauer S, Glass NL, Somerville CR. A comparative systems analysis of polysaccharide-elicited responses in *Neurospora crassa* reveals carbon source-specific cellular adaptations. *Mol Microbiol*. 2014;91(2):275–99.
29. Samal A, Craig JP, Coradetti ST, Benz JP, Eddy JA, Price ND, et al. Network reconstruction and systems analysis of plant cell wall deconstruction by *Neurospora crassa*. *Biotechnol Biofuels*. 2017;10(1):225.
30. Pullan ST, Daly P, Delmas S, Ibbett R, Kokolski M, Neiteler A, et al. RNA-sequencing reveals the complexities of the transcriptional response to lignocellulosic biofuel substrates in *Aspergillus niger*. *Fungal Biol Biotechnol*. 2014;1(1):1–14.
31. Daly P, van Munster JM, Blythe MJ, Ibbett R, Kokolski M, Gaddipati S, et al. Expression of *Aspergillus niger* CAZymes is determined by compositional changes in wheat straw generated by hydrothermal or ionic liquid pretreatments. *Biotechnol Biofuels*. 2017;10(1):35.
32. Tian C, Beeson WT, Iavarone AT, Sun J, Marletta MA, Cate JHD, et al. Systems analysis of plant cell wall degradation by the model filamentous fungus *Neurospora crassa*. *Proc Natl Acad Sci*. 2009;106(52):22157–62.
33. Hakkinen M, Arvas M, Oja M, Aro N, Penttilä M, Saloheimo M, et al. Re-annotation of the CAZY genes of *Trichoderma reesei* and transcription in the presence of lignocellulosic substrates. *Microb Cell Fact*. 2012;11:134.
34. van Munster JM, Daly P, Delmas S, Pullan ST, Blythe MJ, Malla S, et al. The role of carbon starvation in the induction of enzymes that degrade plant-derived carbohydrates in *Aspergillus niger*. *Fungal Genet Biol*. 2014;72:34–47.
35. Martens-Uzunova ES, Schaap PJ. Assessment of the pectin degrading enzyme network of *Aspergillus niger* by functional genomics. *Fungal Genet Biol*. 2009;46(Suppl 1):S170–9.
36. Krohn NG, Brown NA, Colabardini AC, Reis T, Savoldi M, Dinamarco TM, et al. The *Aspergillus nidulans* ATM kinase regulates mitochondrial function, glucose uptake and the carbon starvation response. *G3*. 2014;4(1):49–62.
37. Brown NA, De Gouvea PF, Krohn NG, Savoldi M, Goldman GH. Functional characterisation of the non-essential protein kinases and phosphatases regulating *Aspergillus nidulans* hydrolytic enzyme production. *Biotechnol Biofuels*. 2013;6(1):91.
38. Delmas S, Pullan ST, Gaddipati S, Kokolski M, Malla S, Blythe MJ, et al. Uncovering the genome-wide transcriptional responses of the filamentous fungus *Aspergillus niger* to lignocellulose using RNA sequencing. *PLoS Genet*. 2012;8(8):e1002875.
39. Gruben BS, Zhou M, Wiebenga A, Ballering J, Overkamp KM, Punt PJ, et al. *Aspergillus niger* RhaR, a regulator involved in L-rhamnose release and catabolism. *Appl Microbiol Biotechnol*. 2014;98(12):5531–40.
40. Niu J, Alazi E, Reid ID, Arentshorst M, Punt PJ, Visser J, et al. An evolutionarily conserved transcriptional activator-repressor module controls expression of genes for D-Galacturonic acid utilization in *Aspergillus niger*. *Genetics*. 2017;205(1):169–83.
41. Gruben BS, Mäkelä MR, Kowalczyk JE, Zhou M, Benoit-Gelber I, De Vries RP. Expression-based clustering of CAZyme-encoding genes of *Aspergillus niger*. *BMC Genomics*. 2017;18(1):900.
42. Alazi E, Niu J, Kowalczyk JE, Peng M, Aguilar Pontes MV, van Kan JAL, et al. The transcriptional activator GaaR of *Aspergillus niger* is required for release and utilization of d-galacturonic acid from pectin. *FEBS Lett*. 2016;590(12):1804–15.
43. de Vries RP, Riley R, Wiebenga A, Aguilar-Osorio G, Amillis S, Uchima CA, et al. Comparative genomics reveals high biological diversity and specific adaptations in the industrially and medically important fungal genus *Aspergillus*. *Genome Biol*. 2017;18(1):28.
44. Ries L, Pullan ST, Delmas S, Malla S, Blythe MJ, Archer DB. Genome-wide transcriptional response of *Trichoderma reesei* to lignocellulose using RNA sequencing and comparison with *Aspergillus niger*. *BMC Genomics*. 2013;14:541.
45. de Souza WR, de Gouvea PF, Savoldi M, Malavazi I, de Souza Bernardes LA, Goldman MHS, et al. Transcriptome analysis of *Aspergillus niger* grown on sugarcane bagasse. *Biotechnol Biofuels*. 2011;4(1):40.
46. Borin GP, Sanchez CC, de Santana ES, Zanini GK, Dos Santos RAC, de Oliveira Pontes A, et al. Comparative transcriptome analysis reveals different strategies for degradation of steam-exploded sugarcane bagasse by *Aspergillus niger* and *Trichoderma reesei*. *BMC Genomics*. 2017;18(1):501.
47. de Vries RP, Visser J, de Graaff LH. CreA modulates the XlnR-induced expression on xylose of *Aspergillus niger* genes involved in xylan degradation. *Res Microbiol*. 1999;150(4):281–5.
48. Maggio-Hall LA, Lyne P, Wolff JA, Keller NP. A single acyl-CoA dehydrogenase is required for catabolism of isoleucine, valine and short-chain fatty acids in *Aspergillus nidulans*. *Fungal Genet Biol*. 2008;45(3):180–9.
49. Reiser K, Davis MA, Hynes MJ. *Aspergillus nidulans* contains six possible fatty acyl-CoA synthetases with FaaB being the major synthetase for fatty acid degradation. *Arch Microbiol*. 2010;192(5):373–82.
50. Stemple CJ, Davis MA, Hynes MJ. The facC gene of *Aspergillus nidulans* encodes an acetate-inducible carnitine acetyltransferase. *J Bacteriol*. 1998;180(23):6242–51.
51. Hynes MJ, Murray SL, Andrianopoulos A, Davis MA. Role of carnitine acetyltransferases in acetyl coenzyme A metabolism in *Aspergillus nidulans*. *Eukaryot Cell*. 2011;10(4):547–55.
52. Hynes MJ, Murray SL, Khew GS, Davis MA. Genetic analysis of the role of peroxisomes in the utilization of acetate and fatty acids in *Aspergillus nidulans*. *Genetics*. 2008;178(3):1355–69.
53. Valenciano S, Lucas JR, Pedregosa A, Monistrol IF, Laborda F. Induction of beta-oxidation enzymes and microbody proliferation in *Aspergillus nidulans*. *Arch Microbiol*. 1996;166(5):336–41.
54. Maggio-Hall LA, Keller NP. Mitochondrial beta-oxidation in *Aspergillus nidulans*. *Mol Microbiol*. 2004;54(5):1173–85.
55. Szilágyi M, Miskei M, Karányi Z, Lenkey B, Pócsi I, Emri T. Transcriptome changes initiated by carbon starvation in *Aspergillus nidulans*. *Microbiol*. 2013;159(Pt 1):176–90.

56. Brock M. Fungal metabolism in host niches. *Curr Opin Microbiol.* 2009;12(4):371–6.
57. Lima P, Casaletti L, Bailão AM, de Vasconcelos ATR, Fernandes G, Soares CM. Transcriptional and proteomic responses to carbon starvation in *Paracoccidioides*. *PLoS Negl Trop Dis.* 2014;8(5):e2855.
58. Katz ME, Braunberger K, Yi G, Cooper S, Nonhebel HM, Gondro C. A p53-like transcription factor similar to Ndt80 controls the response to nutrient stress in the filamentous fungus *Aspergillus nidulans*. *Research.* 2013;2:72.
59. Coradetti ST, Craig JP, Xiong Y, Shock T, Tian C, Glass NL. Conserved and essential transcription factors for cellulase gene expression in ascomycete fungi. *Proc Natl Acad Sci.* 2012;109(19):7397–402.
60. Hynes MJ, Murray SL, Duncan A, Khew GS, Davis MA. Regulatory genes controlling fatty acid catabolism and peroxisomal functions in the filamentous fungus *Aspergillus nidulans*. *Eukaryot Cell.* 2006;5(5):794–805.
61. Johnstone IL, McCabe PC, Greaves P, Gurr SJ, Cole GE, Brow MA, et al. Isolation and characterisation of the *crnA-niiA-niaD* gene cluster for nitrate assimilation in *Aspergillus nidulans*. *Gene.* 1990;90(2):181–92.
62. Hrdlicka PJ, Sørensen AB, Poulsen BR, Ruijter GJG, Visser J, Iversen JLL. Characterization of nerolidol biotransformation based on indirect on-line estimation of biomass concentration and physiological state in batch cultures of *Aspergillus niger*. *Biotechnol Prog.* 2008;20(1):368–76.
63. Butler E, Devlin G, Meier D, McDonnell K. Characterisation of spruce, salix, miscanthus and wheat straw for pyrolysis applications. *Bioresour Technol.* 2013;131:202–9.
64. Raulo R, Kokolski M, Archer DB. The roles of the zinc finger transcription factors XlnR, ClrA and ClrB in the breakdown of lignocellulose by *Aspergillus niger*. *AMB Express.* 2016;6(1):1–12.
65. Ogawa M, Kobayashi T, Koyama Y. ManR, a novel Zn(II)2Cys6 transcriptional activator, controls the  $\beta$ -mannan utilization system in *Aspergillus oryzae*. *Fungal Genet Biol.* 2012;49(12):987–95.
66. Ogawa M, Kobayashi T, Koyama Y. ManR, a transcriptional regulator of the  $\beta$ -mannan utilization system, controls the cellulose utilization system in *Aspergillus oryzae*. *Biosci Biotechnol Biochem.* 2013;77(2):426–9.
67. Ng H-E, Raj SSA, Wong SH, Tey D, Tan H-M. Estimation of fungal growth using the ergosterol assay: a rapid tool in assessing the microbiological status of grains and feeds. *Lett Appl Microbiol.* 2008;46(1):113–8.
68. Andersen MR, Nielsen JB, Klitgaard A, Petersen LM, Zachariassen M, Hansen TJ, et al. Accurate prediction of secondary metabolite gene clusters in filamentous fungi. *Proc Natl Acad Sci.* 2013;110(1):E99–107.
69. Inglis DO, Binkley J, Skrzypek MS, Arnaud MB, Cerqueira GC, Shah P, et al. Comprehensive annotation of secondary metabolite biosynthetic genes and gene clusters of *Aspergillus nidulans*, *A. fumigatus*, *A. niger* and *A. oryzae*. *BMC Microbiol.* 2013;13:91.
70. Gardiner DM, Howlett BJ. Bioinformatic and expression analysis of the putative gliotoxin biosynthetic gene cluster of *Aspergillus fumigatus*. *FEMS Microbiol Lett.* 2005;248(2):241–8.
71. Daly P, van Munster JM, Kokolski M, Sang F, Blythe MJ, Malla S, et al. Transcriptomic responses of mixed cultures of ascomycete fungi to lignocellulose using dual RNA-seq reveal inter-species antagonism and limited beneficial effects on CAZyme expression. *Fungal Genet Biol.* 2017;102:4–21.
72. da Silva Ferreira ME, Malavazi I, Savoldi M, Brakhage AA, Goldman MHS, Kim HS, et al. Transcriptome analysis of *Aspergillus fumigatus* exposed to voriconazole. *Curr Genet.* 2006;50(1):32–44.
73. Maiya S, Grundmann A, Li X, Li S-M, Turner G. Identification of a hybrid PKS/NRPS required for pseurotin A biosynthesis in the human pathogen *Aspergillus fumigatus*. *ChemBioChem.* 2007;8(14):1736–43.
74. Romsdahl J, Wang CCC. Recent advances in the genome mining of *Aspergillus* secondary metabolites (covering the 2012–2018). *Med Chem Comm.* 2019;10(6):840–66.
75. Miyake Y, Ito C, Itoigawa M, Osawa T. Isolation of the antioxidant pyranonigrin-A from rice mold starters used in the manufacturing process of fermented foods. *Biosci Biotechnol Biochem.* 2007;71(10):2515–21.
76. Netzker T, Fischer J, Weber J, Mattern DJ, König CC, Valiante V, et al. Microbial communication leading to the activation of silent fungal secondary metabolite gene clusters. *Front Microbiol.* 2015;6:299.
77. Young MD, Wakefield MJ, Smyth GK, Oshlack A. Gene ontology analysis for RNA-seq: accounting for selection bias. *Genome Biol.* 2010;11(2):R14.
78. Nitsche BM, Crabtree J, Cerqueira GC, Meyer V, Ram AFJ, Wortman JR. New resources for functional analysis of omics data for the genus *Aspergillus*. *BMC Genomics.* 2011;12:486.
79. Chong J, Soufan O, Li C, Caraus I, Li S, Bourque G, et al. MetaboAnalyst 4.0: towards more transparent and integrative metabolomics analysis. *Nucleic Acids Res.* 2018;46(W1):W486–94.
80. Chong J, Xia J. MetaboAnalystR: an R package for flexible and reproducible analysis of metabolomics data. *Bioinformatics.* 2018;34(24):4313–4.
81. Reimand J, Arak T, Adler P, Kolberg L, Reisberg S, Peterson H, et al. g:Profiler—a web server for functional interpretation of gene lists (2016 update). *Nucleic Acids Res.* 2016;44(W1):W83–9.
82. Supek F, Bošnjak M, Škunca N, Šmuc T. Revigo summarizes and visualizes long lists of gene ontology terms. *PLoS ONE.* 2011;6(7):e21800.
83. Pitkänen E, Jouhten P, Hou J, Syed MF, Blomberg P, Kludas J, et al. Comparative genome-scale reconstruction of gapless metabolic networks for present and ancestral species. *PLoS Comput Biol.* 2014;10(2):e1003465.
84. Savage RS, Heller K, Xu Y, Ghahramani Z, Truman WM, Grant M, et al. R/BHC: fast Bayesian hierarchical clustering for microarray data. *BMC Bioinf.* 2009;10:242.
85. Kanehisa M, Goto S, Sato Y, Kawashima M, Furumichi M, Tanabe M. Data, information, knowledge and principle: back to metabolism in KEGG. *Nucleic Acids Res.* 2014;42:D199–205.
86. Caspi R, Altman T, Dreher K, Fulcher CA, Subhraveti P, Keseler IM, et al. The MetaCyc database of metabolic pathways and enzymes and the BioCyc collection of pathway/genome databases. *Nucleic Acids Res.* 2012;40(Database issue):D742–53.
87. Bohle K, Jungebloud A, Gocke Y, Dalpiaz A, Cordes C, Horn H, et al. Selection of reference genes for normalisation of specific gene quantification data of *Aspergillus niger*. *J Biotechnol.* 2007;132(4):353–8.
88. Vandesompele J, De Preter K, Pattyn F, Poppe B, Van Roy N, De Paeppe A, et al. Accurate normalization of real-time quantitative RT-PCR data by geometric averaging of multiple internal control genes. *Genome Biol.* 2002;3(7):RESEARCH0034.

## Publisher's Note

Springer Nature remains neutral with regard to jurisdictional claims in published maps and institutional affiliations.

Ready to submit your research? Choose BMC and benefit from:

- fast, convenient online submission
- thorough peer review by experienced researchers in your field
- rapid publication on acceptance
- support for research data, including large and complex data types
- gold Open Access which fosters wider collaboration and increased citations
- maximum visibility for your research: over 100M website views per year

At BMC, research is always in progress.

Learn more [biomedcentral.com/submissions](https://biomedcentral.com/submissions)

