

Rowan University

Rowan Digital Works

College of Education Faculty Scholarship

College of Education

4-2020

Assessment as a Service Not a Place: Transitioning Assessment Centers to School-Based Identification Systems

Anne Hayes

Brent Elder

Rowan University, elderb@rowan.edu

Jennae Bulat

Follow this and additional works at: https://rdw.rowan.edu/education_facpub



Part of the [Educational Assessment, Evaluation, and Research Commons](#)

Let us know how access to this document benefits you - share your thoughts on our [feedback form](#).

Recommended Citation

Hayes, Anne; Elder, Brent; and Bulat, Jennae, "Assessment as a Service Not a Place: Transitioning Assessment Centers to School-Based Identification Systems" (2020). *College of Education Faculty Scholarship*. 23.

https://rdw.rowan.edu/education_facpub/23

This Technical Report is brought to you for free and open access by the College of Education at Rowan Digital Works. It has been accepted for inclusion in College of Education Faculty Scholarship by an authorized administrator of Rowan Digital Works. For more information, please contact brush@rowan.edu.



Assessment as a Service Not a Place: Transitioning Assessment Centers to School-Based Identification Systems

Anne M. Hayes, Brent C. Elder, and Jennae Bulat

RTI Press publication OP-0064-2004

RTI International is an independent, nonprofit research organization dedicated to improving the human condition. The RTI Press mission is to disseminate information about RTI research, analytic tools, and technical expertise to a national and international audience. RTI Press publications are peer-reviewed by at least two independent substantive experts and one or more Press editors.

Suggested Citation

Hayes, A., Elder, B. C., & Bulat, J. (2020). *Assessment as a Service Not a Place: Transitioning Assessment Centers to School-Based Identification Systems*. RTI Press Publication No. OP-0064-2004. Research Triangle Park, NC: RTI Press. <https://doi.org/10.3768/rtipress.2020.op.0064.2004>

Cover photo: Student teachers follow an English reading lesson at Ndegeya Primary Teachers College in Masaka, Uganda. © Katie G. Nelson for RTI International.

This publication is part of the RTI Press Research Report series. Occasional Papers are scholarly essays on policy, methods, or other topics relevant to RTI areas of research or technical focus..

RTI International
3040 East Cornwallis Road
PO Box 12194
Research Triangle Park, NC
27709-2194 USA

Tel: +1.919.541.6000
E-mail: rtipress@rti.org
Website: www.rti.org

©2020 RTI International. RTI International is a registered trademark and a trade name of Research Triangle Institute. The RTI logo is a registered trademark of Research Triangle Institute.



This work is distributed under the terms of a Creative Commons Attribution-NonCommercial-NoDerivatives 4.0 license (CC BY-NC-ND), a copy of which is available at <https://creativecommons.org/licenses/by-nc-nd/4.0/legalcode>

<https://doi.org/10.3768/rtipress.2020.op.0064.2004>

www.rti.org/rtipress

Contents

About the Authors	i
Acknowledgments	ii
Abstract	ii
Introduction	1
Worldwide Situation of Identification of Students with Disabilities	2
Challenges of Assessment Centers	3
The Importance and Benefits of School-Based Identification Practices	4
Strategies to Transition Toward School-Based Identification	6
Identifying Students with Disabilities Within a School-Based System	10
Conclusion	12
References	13

About the Authors

Anne M. Hayes, Founder and Chief Operating Officer of Inclusive Development Partners (IDP).

Brent C. Elder, PhD, is an assistant professor in the College of Education at Rowan University.

Jenna Bulat, PhD, is Senior Director of Teaching & Learning at RTI International.

RTI Press Associate Editor

Benjamin Piper

Acknowledgments

The authors would like to thank their international educational partners who have who have generously opened up their schools and introduced us to their wonderful teachers and students without whom this work would be impossible.

Abstract

The World Health Organization and World Bank (2011) estimate that there are more than 1 billion people with disabilities in the world. To address this population's diverse needs, the United Nations drafted their Convention on the Rights of Persons with Disabilities (CRPD) in 2006. Article 24 (Education) of the CRPD requires ratifying countries to develop an inclusive education system to address the educational needs of students with disabilities alongside their peers without disabilities. Despite substantive improvements and movement toward inclusive education, many low- and middle-income countries (LMICs) continue to struggle with accurately identifying and supporting students with disabilities, including knowing how to effectively screen, evaluate, and qualify students for additional services (Hayes, Dombrowski, Shefcyk, & Bulat, 2018a). These challenges stem from the lack of policies, practices, and qualified staff related to screening and identification. As a result, many students with less-apparent disabilities—such as children with learning disabilities—remain unidentified and do not receive the academic supports they need to succeed in school (Friend & Bursuck, 2012). This guide attempts to address the lack of appropriate, useful disability screening and identification systems and services as countries look to educate all students in inclusive settings. Specifically, this guide introduces viable options for screening and identification related to vision, hearing, and learning disabilities in inclusive classrooms in LMICs. It also provides guidance on how LMICs can transition from an assessment-center model toward a school-based identification model that better serves an inclusive education system.

Introduction

The World Health Organization and World Bank (2011) estimate that there are more than 1 billion people with disabilities in the world. To address this population's diverse needs, the United Nations drafted their Convention on the Rights of Persons with Disabilities (CRPD) in 2006. Article 24 (Education) of the CRPD requires ratifying countries to develop an inclusive education system to address the educational needs of students with disabilities alongside their peers without disabilities. According to the United States Agency for International Development (USAID) (2018), inclusive education means:

Having one system of education for all students, at all levels (early childhood, primary, secondary, and post-secondary), with the provision of supports to meet the individual needs of students. Inclusive education focuses on the full and effective participation, accessibility, attendance, and achievement of all students, especially those who, for different reasons, are excluded or at risk of being marginalized. (p. 45)

As of December 2019, 181 countries have ratified the CRPD, which means those governments have committed to developing a system of inclusive education. This process can be complex because of the many financial and logistics barriers that countries, especially low- and middle-income countries (LMICs), face (United Nations, 2019). This commitment to inclusion has been reinforced by the United Nations Sustainable Development Goals (SDGs), where Goal 4 emphasizes the need to provide inclusive education to students with disabilities (United Nations, 2015). Developing inclusive education systems requires coordination across all levels of a system and requires coordination of government agencies that span education, health, social welfare, and early childhood. This development can only be accomplished if education systems tackle barriers such as policies that limit inclusion, discriminatory views toward disabilities, under-prepared teachers and inflexible curricula, lack of accessible learning materials, lack of appropriate identification and diagnosis systems and services, and inaccessible facilities (Hayes, Turnbull, & Moran, 2018b).



Identification Versus Diagnosis

For the purposes of this guide, "identification" entails initial vision and hearing screening along with student evaluation through ecological assessments with the end goal of providing specialized inclusive supports for students who require them. A "diagnosis" is something that is given by trained medical professionals.

This guide attempts to address one of these challenges: the lack of appropriate, useful disability screening and identification systems and services. As countries look to educate all students in inclusive settings, it is important to develop a system for screening, identification, and qualification for special education services that is based in the school and can be provided within an inclusive school classroom. Within such a school-based system, teachers should be trained and able to regularly screen students for disabilities. Additionally, qualified staff should be available to perform more-in-depth disability evaluations within the school environment. Although the availability of trained and qualified staff is not a reality in many LMICs, it is important that governments work to progressively to build capacity in this area.



Special Education as a Service, Not a Place

There is a common misperception that special education must be provided via segregated settings or services. For the purposes of this guide, special education signifies services and supports provided to students with disabilities within an inclusive setting; thus, they are consistent with the concept that "special education is a service, not a place."

Currently, most LMICs lack policies, protocols, tools, and expertise related to screening, evaluation, and qualification for additional services (Hayes, Dombrowski, Shefcyk, & Bulat, 2018a). To address the need for disability identification services, many countries have established specific assessment centers as a way to provide at least some form of evaluation services. These centers typically exist in larger towns or cities, are intended to serve families across a broad geographic area who travel to the center for testing,

and employ staff trained in an array of disability identification tests and processes.¹

Although these centers appeal to many governments because of perceived cost-efficiencies, this centralization of identification services into a small number of discrete centers comes with challenges. For one, conducting identification practices in stand-alone centers means that a student's identification is conducted over a shorter period of time—typically over one or two days—than is possible if working with a student in that student's school. The shorter identification period does not give assessment center staff sufficient time to observe and determine a student's abilities and support needs over time. In addition, identifying students in a center does not allow staff to observe a student across settings in the school or to meaningfully engage families as partners in the evaluation process. As a result, these identification practices often do not result in meaningful recommendations for instructional techniques that help both the teacher and the student. Further, the diagnoses given in these centers are often used as a justification to exclude students from, rather than include them in, mainstream schools. Because of these challenges and limitations, stand-alone assessment centers fail to promote the development of inclusive education practices around the world.

This guide provides guidance on moving away from the use of specific assessment centers to identify and diagnose disabilities. Doing so will help make education services more responsive to the needs of students with disabilities and more in line with CRPD guidance. Specifically, this guide

- provides a brief background on the purpose and intended outcomes of identification,
- describes the challenges of stand-alone assessment centers and the benefits of school-based identification practices,
- provides practical steps for governments, donors, and practitioners on how they can build off of existing assessment strengths within a country, and

- conceptualizes identification of students with disabilities as an educational service rather than a place.

Worldwide Situation of Identification of Students with Disabilities

Protocols and systems for identifying students with disabilities and determining whether they qualify for special education services vary dramatically worldwide. Some countries, such as the United States and Finland, rely heavily on the identification of a specific disability or set of disabilities in determining the education support a student will receive, and this reliance on identification is embedded in their national inclusive education laws (Björn, Aro, Koponen, Fuchs, & Fuchs, 2016). Unfortunately, many countries have also historically required students to have an official diagnosis to attend segregated, disability-specific schools, such as schools for students who are deaf or schools for students who are blind. For example, Belgium requires that children be assigned diagnostic criteria and medical labels before being able to attend a segregated school (Mortier & Vandelanotte, 2017). In some countries, children with suspected disabilities must also receive a diagnosis before attending inclusive schools. This trend of requiring a diagnosis as a precursor to school enrollment in both inclusive and segregated schools continues today in many countries, including China, Ghana, Greece, Kenya, Turkey, and Zimbabwe (Avoke & Hayford, 2017; Cavkaytar, Uyanik, & Yucsoy-Ozkan, 2017; Chitiyo, Chitiyo, & Charema, 2017; Deng & Wang, 2017; Kartasidou & Pavlidou, 2017).

In these countries, the diagnostic testing is often done in national or regional assessment centers. Core responsibilities of staff in these centers are to not only provide a medical diagnosis, which often results in recommendations for placement within segregated schools, but also decide whether students can be educated within inclusive classrooms. For example, Greece's Centers for Differential Diagnosis, and Support for Special Education Needs are responsible for providing recommendations for educational placement (Kartasidou & Pavlidou, 2017). As a counterexample to this practice, Australia, Canada, and Finland are moving away entirely from diagnosis

¹ In this report, we consider anyone who has paid interactions with students and families (e.g., assessment center employee) as "staff." We consider certified teachers, specialists, and administrators as "professionals."

and instead focus on students' needs rather than disability labels. In other words, these countries provide identification as a service rather than as a place and shift focus from diagnosis to inclusive in-class supports.

Although some countries are moving to a social model² when it comes to diagnosis, countries such as Malawi, Nigeria, Senegal, and Rwanda currently do not have existing formal systems of identification and rely on teacher discretion to determine a student's eligibility for special services, or for placement in a segregated school (Drame, Lancaster, & Duval-Diop, 2017; Itimu-Phiri, Gwayi, & Itimu, 2017; Karangwa, 2017; Obiakor & Eleweke, 2017). Too often, though, these teachers are not sufficiently trained in how to screen, evaluate, or determine necessary supports for students, especially those with disabilities such as learning disabilities that require more-sophisticated identification tools and protocols. In a similar vein, although Jordan has three official government-supported assessment centers, teachers are reported to develop their own tools and informally identify students as having disabilities (Research related to the results of the assessment centers in Jordan was not available) (RTI International, 2017). In at least one country, Uganda, assessment centers once existed but were discontinued (Okech, 2017). The article does not give reasons for the discontinuation or indicate what sort of identification services replaced the centers.

Countries also vary in where they place assessment and identification staff. Many LMICs rely on limited numbers of stand-alone assessment centers to conduct disability identification. Other countries, such as Australia, Canada, Denmark, England, Finland, New Zealand, Sweden, and the United States, assess students within the school setting to determine whether a student qualifies for additional services and supports (Arthur-Kelly & Foreman, 2017; Björn et al., 2016; Dyssegaard & Egelund, 2017; Gaffney, Morton, & Hart, 2017; Killoran & Parekh, 2017;

Patton & Wehmeyer, 2017; Rose & Qureshi, 2017; Wilder & Klang, 2017). In other countries, assessment center staff are not employed by or tied to individual schools but are available to support school-based assessment teams. In Brazil and Northern Ireland, identification is conducted within the classroom, but school teams have access to itinerant specialists to support screening and evaluations if needed (Kassar & Magario, 2017; MacKenzie, 2017).

Countries that provide identification as a service made available in schools tend to have the largest population of students educated within inclusive education systems. In Finland, less than 2 percent of students with disabilities are educated in segregated schools (Jarvinen, 2007), and less than 1.7 percent of students with disabilities in Sweden are segregated (Government of Sweden, 2012). Conversely, most of the countries with independent assessment centers continue to support segregated schools and have yet to implement inclusive education universally. For example, Turkey has 93 national assessment centers supported by 440 staff members, and most of students with disabilities receive an education in one of the country's 480 segregated schools (Melekoglu, Carkiroglu, & Malmgren, 2009). This number is exceedingly high compared to countries that only have a few assessment centers or do not have assessment centers at all.

Challenges of Assessment Centers

Although the appeal of instituting stand-alone assessment centers is notable—all funding and resources located and managed in a discrete number of centers—the reliance on assessment centers can limit access, constrain effectiveness, and even lead to misdiagnosis.

- **Lack of adequate tools and qualified staff.** Although intended to offer comprehensive identification services, many assessment centers in LMICs do not have qualified staff, culturally adapted tools, protocols, or equipment needed to appropriately screen or evaluate students with disabilities. A lack of culturally adapted tools and qualified experts to administer screenings and evaluations can lead to misidentification and misdiagnosis (Oakland,

² The social model of disability recognizes that disability is part of the human condition and that persons with disabilities have the same human rights as persons without disabilities. The social model also locates disability in inaccessible societal spaces that create disability (i.e., curbs without curb cuts, television without captions). This is different from the medical model, which approaches disability as something that needs to be cured or fixed, or the charity model, which views disability as something that needs charity or pity.

2009). The governments of Ghana, Senegal, and Jordan all cite experiencing these challenges within their respective assessment centers (Drame et al., 2017; RTI International, 2017).

- Lack of school-based identification practices.** Identification practices conducted in a center and away from a student's school environment do not represent an accurate picture of students' classroom-based academic needs and do not engage teachers throughout the process, making it hard for people to recognize a student's needs and propose appropriate academic supports. An assessment center-based approach largely focuses on a child's deficits, as it does not harness the child's classroom-based strengths that can be used to meet academic challenges.
- Lack of family partnership.** During the identification process conducted in many of the assessment centers, parents are often not engaged as active participants, and tend to only be recipients of information or findings (Karasu, 2014). Actively engaging families in the process results in more-accurate identifications (Farrall, Wright & Wright, 2015). Furthermore, as assessment centers tend to be regionally based, they can be geographically inaccessible to many children with disabilities and their families, which can place an undue financial burden on families and children with disabilities (Mukuria & Korir, 2006).
- Identification practices result in labels rather than helpful teaching techniques.** Too often, assessment

center-based evaluations label a child with a disability without addressing how teaching techniques or curriculum can be adapted to serve the student's unique needs. Likewise, assessment center-based evaluations often look primarily at student deficits rather than strengths. A deficit-based approach to identification focuses on what students with disabilities cannot do, rather than what they can, and lowers standards for student learning, which can result in the implementation of less-effective learning strategies. Ideally, the identification process informs teachers, the school team, and families (Farrall, Wright, & Wright, 2015). The idea is that this information will then be incorporated into the student's Individual Education Plan (IEP) along with possible additional accommodations to support and improve learning.³ For more on the benefits of strength-based approaches to special education, see Elder, Rood, and Damiani (2018).

- Identification practices justify exclusion rather than promote inclusion for many students.** Assessment center-based evaluations are often used to justify exclusion of students with more-complex disabilities and placement in a segregated school rather than in inclusive local school settings (Hehir et al., 2016). This segregated approach

³ An IEP is an educational plan that sets academic goals for students with disabilities and highlights what types of supports, accommodations, and additional services they may need to reach their full academic potential. Versions of IEPs are used in many countries throughout the world.

Education Assessment Resource Centers (EARCs) in Kenya: Stories from the Field



In 2008, the Kenyan Ministry of Education recognized inclusive education as "a fundamental right to every citizen" that should be "provided free of charge in primary and secondary schools to all learners in public schools" (Ministry of Education, 2008, p. ix). While the Kenyan government continues to wrestle with how to develop an inclusive education system, it is taking steps toward promising inclusive education practices (Elder & Kuja, 2018). One such practice is the provision of disability assessments to families of children who may have a disability. The Kenyan government directly supports a network of EARCs, which have "seen a significant increase in their budgetary allocation" in recent years from KES 98,000,000 (\$980,000) to KES 420,000,000 (\$4.2 million) (Office of the High Commissioner on Human Rights, 2011). The government is also looking to expand identification services.

Currently, the Kenyan government faces an opportunity to expand these services in a way that does not inadvertently harm children, that is aligned with the CRPD, and that follows suggestions for best practice. EARCs should consider transitioning from evaluating students in assessment centers toward evaluating students in schools, a change that would allow EARCs to collect identification data and write referrals for placement of students with disabilities in the school environment. EARC staff should also find students with disabilities who are not currently accessing school, educate parents and communities on the importance of educating their children, and get students enrolled in the school they would attend in the absence of a disability. In addition to supporting and educating parents, EARCs can inform teachers about how to modify curriculum and design appropriate learning materials to support all students, especially students with disabilities.

to identification does not encourage assessment centers to help develop inclusive tools for teachers in primary and secondary schools, nor to develop inclusive supports, services, and accommodations in the school the student would attend in the absence of a disability. School-based identification practices can also be used to justify exclusion rather than promote inclusion if used improperly. See the textbox on Education Assessment Resource Centers, which summarizes many of the obstacles currently facing LMICs related to center-based assessments, using Kenya as a case study.

The Importance and Benefits of School-Based Identification Practices

Having health care centers or community-based support for screening and diagnosis is important for early identification and early intervention and for supporting adults outside of the classroom environment. However, it is critical that assessments linked to school services, school placement, and eligibility for special education services take place in a school and/or classroom setting. As noted above, school-based identification allows teachers to focus on students' academic strengths and needs while observing students in a variety of school settings over time. Outlined below are some other benefits of providing identification as a service rather than a place.

- **School-based evaluations are more likely to identify strategies and supports for more students.** Conducting evaluations in the school makes it possible to assess all children in the school and school catchment area. Conducting school-based identification practices also allows for the identification of academic strengths and challenges. Such approaches can provide useful instructional techniques and recommendations for student support that move away from merely placing labels on students and toward addressing their in-class academic support needs. Classroom-based identification practices can also reduce the stigma of labeling students, and when done correctly, can help eliminate the challenges of misdiagnosis. School-wide evaluations can help to identify supports for students with high-incidence

disabilities (e.g., auditory processing disorders, dyscalculia, dysgraphia, language processing disorders) that may otherwise go unidentified and unsupported, especially in LMICs (Abosi, 2007). Sæbønes et al. (2015) also suggest that classroom-based identification should not only be literacy- and numeracy-based but also include more aspects of a student's school experience (e.g., social aspects).

- **Firsthand gathering of data.** Directly observing a student in the school setting allows the evaluator to see the multiple educational settings (e.g., classrooms, playgrounds) that a student is exposed to on a daily basis. Direct observation allows the evaluator to propose strategies and interventions that can be directly applied to each setting. For example, local curriculum and classroom-based identification practices are at the core of ecological assessments. For more on firsthand data gathering, see the Focus on Practice textbox, which discusses ecological assessments.

Focus on Practice: Ecological Assessments

An ecological assessment is an observation-based assessment meant to be used in different school-related settings over a period of time to get a more-accurate picture of the student's strengths and needs (Downing, Hanreddy, & Peckham-Hardin, 2015). The assessment should be conducted in natural classroom environments. An ecological assessment provides a holistic view of students and can be used in any environment (Beukelman & Mirenda, 2013). Ecological assessments do not need to be culturally adapted or normed, as they compare students with disabilities to their peers in natural environments. Ecological assessments look at naturally occurring routines, what students without disabilities are doing, and whether and how students with disabilities are performing the same sorts of activities and actions. These assessments encourage the evaluator to fill the gaps with existing school resources (e.g., support from peers without disabilities, small group instruction). It is important to use ecological assessments over a period of time with multiple team members who regularly interact with the student. It is important to keep parents informed of identification results throughout the process.

- **Evaluations are contextualized.** School-based evaluations allow schools to implement needs-based supports, as opposed to a diagnosis-based system, which can result in the student being placed in a segregated school with less access to high-quality education (Stough, 2003). School-based

evaluations also allow teachers to directly observe students in their natural learning environments, thereby providing teachers with usable in-class instructional strategies, elevating teacher expectations for student learning, and promoting higher student academic performance (Heckman & Masterov, 2005).

- **Parental involvement.** As noted by Fish (2008), a lack of parental involvement can lead to provision of inappropriate supports for students with disabilities. Students with disabilities and their parents should be considered experts on their experience with disability. Engaging students with disabilities and their families in the school-based identification process can be helpful in identifying strategies and approaches that will work best for the child with a disability (Rutland & Hall, 2013). If parents are not traveling long distances to assessment centers and have the option for a more-localized school-based identification, then the decreased distance can lead to more parent involvement.

Strategies to Transition Toward School-Based Identification

For the reasons stated above, identifying students with disabilities in the students' school environments is preferred compared with only identifying students with disabilities in stand-alone assessment centers. For countries that may currently have existing assessment centers, we recommend that they transition to a school-based identification system that is more aligned with an inclusive education system. This transition can be done in a way that is cost-effective, builds on existing resources and experience, and addresses the gaps often associated with assessing students with disabilities outside of the classroom environment. This section provides a three-pronged approach toward transitioning toward school-based identification:

1. Shifting from focusing on diagnosis toward prioritizing school-based supports for students
2. Transitioning stand-alone assessment centers to serve as resource and support centers for schools, providing itinerant services, training, coaching

and mentorship, and technical resources, and other services

3. Promoting a phased approach to identification that includes school-based vision and hearing screenings, universal screenings to identify learning needs, and ecological assessments

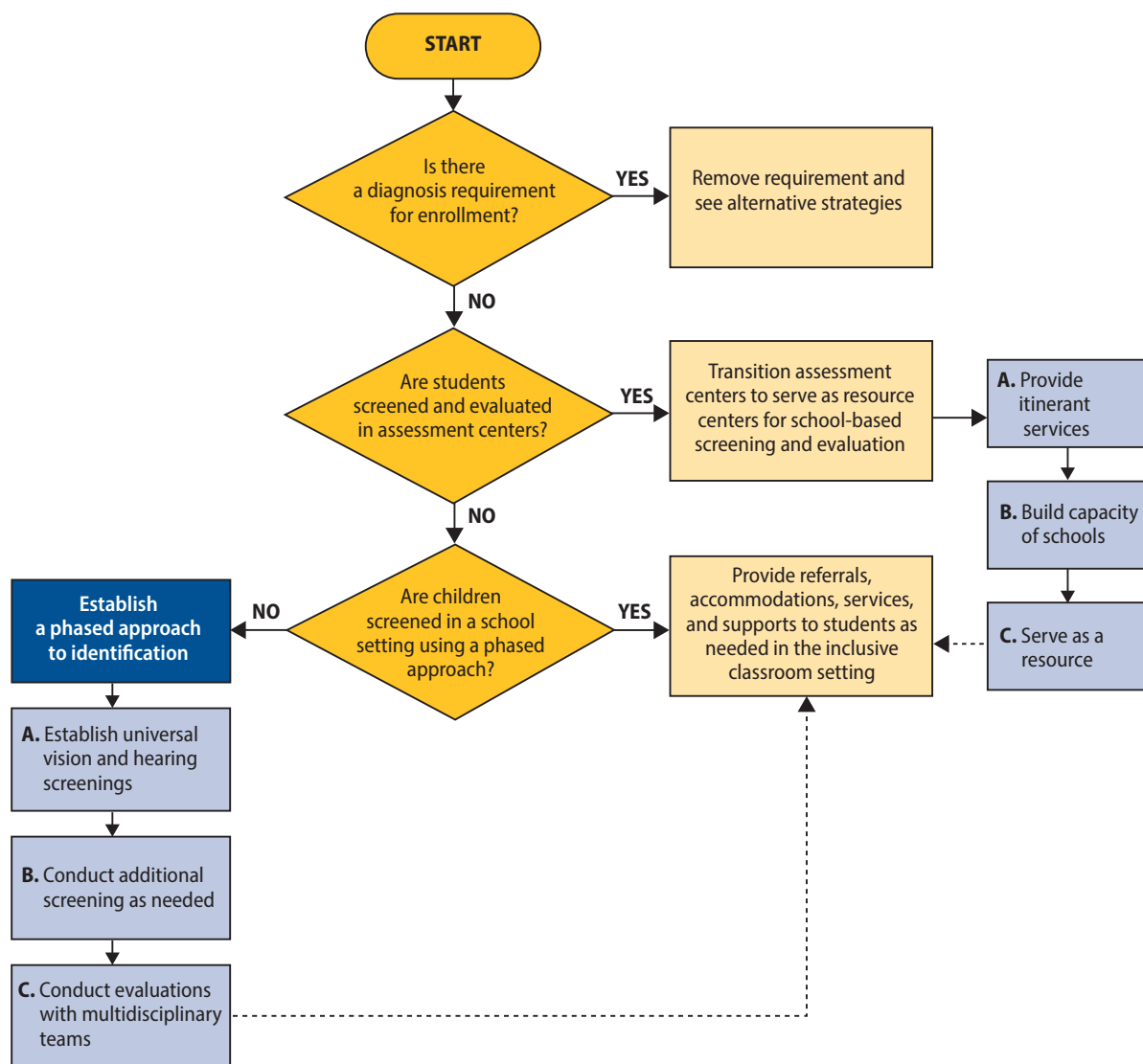
Educational systems can implement these actions over time while also supporting other initiatives for inclusive education. Figure 1 is a flowchart that clarifies the transition process. This flowchart takes readers through frequent questions related to screening and diagnosis and recommends next steps.

Transitioning from stand-alone assessment centers to school-based evaluations and support (i.e., making identification a service rather than a place) can be accomplished through progressive realization⁴ and applying a phased approach. A phased approach allows schools to build upon current assessment strengths within a country, even a country with limited educational resources, while progressively addressing gaps in practices and becoming better aligned with international standards for best practices in inclusive assessment. The three suggested phases for assessment center staff are (1) providing itinerant support in inclusive classroom settings; (2) **building the capacity** of teachers and school staff through continuous training, coaching, and mentorship; and (3) serving as a temporary **resource center** for schools that supports referring families to community services.

Central to this transition is re-envisioning existing roles and responsibilities in ways that promote identification as a service rather than a place. This is extremely relevant in contexts that have limited resources for inclusive education; in these contexts, using the existing funding effectively is paramount. The information below outlines the phases and what may need to occur within each phase.

⁴ According to Article 4, Section 2 of the CRPD (United Nations, 2006), "Each State must take measures to realize economic, social and cultural rights progressively, using the greatest amount of available resources to do so. This obligation, commonly referred to as progressive realization, acknowledges that it often takes time to realize many of these rights fully, for example, when social-security or health-care systems must be created or improved."

Figure 1. Flowchart for assessing learning challenges in children



1. **Provide itinerant services:** Staff assigned to assessment centers should transition to supporting schools, where they should be tasked with conducting school-based identification services. Assessment center staff can initially serve as part of a multidisciplinary team, along with teachers and parents, to screen and support evaluations of students with disabilities in inclusive education classroom settings. Activities under this phase include the following:
 - a. **Developing and implementing policies and protocols related to screening and evaluation.** Although it is imperative to have policies and protocols to guide how and why

students with disabilities are identified in an inclusive setting, establishing symbolic policies and laws without having ways to implement them is ineffective. After creation, policies and protocols must be regionally applied, implemented, and supported by governments. This requires that school system pilot tools and tailored them to cultural norms before being used at a national level. Additional training and guides on how to use the tools may also be needed.

Inclusion committees should be made up of stakeholders in inclusive education (e.g., students with and without disabilities,

teachers, administrators, parents of students with and without disabilities, representatives of the Ministry of Education, and community members with and without disabilities). The committee should set goals and objectives and collectively work on them. Committees should regularly monitor progress to ensure results are directly benefiting students with disabilities and their families (Damiani, Elder, & Okongo, 2016; Elder & Kuja, 2018).

- b. **Reallocating budget for new assessment centers toward itinerant, training, and resource expenses.** Most LMICs have limited funding for education and even fewer resources for inclusive education. Available funds must be spent wisely and allocated to efforts that promote inclusion. The CRPD Committee guidance on implementing inclusive education explicitly states that countries cannot maintain segregated parallel systems and remain in compliance with the CRPD (United Nations, 2016).
- Shifting funding from maintaining and growing center-based assessment toward developing school-based identification service is part of the essential reallocation of resources that systems must undertake to promote full inclusion. For example, initial funding that might have been used to build additional stand-alone assessment centers can be reallocated to support travel for assessment staff to serve as itinerant assessment teams and train and support schools to conduct their own assessments.
- c. **Teaching parents, students, and communities about the value of inclusive education and school-based identification practices.** Stakeholders in inclusive education need to be educated about the benefits of inclusive education and why and how identification for services should take place. Misunderstandings of what disability is and stigma surrounding disabilities within communities make the development of segregated schools seem justified. Therefore, making communities aware of topics related to disabilities, such as the legal imperatives of inclusive

education (Elder & Kuja, 2018), is critical in the development of inclusive school-based identification practices.

As part of this process, assessment center staff can play a vital role in collaborating with families, teachers, and administrators in segregated schools, as well as teachers and administrators in local primary/secondary schools, to identify the placement of students transitioning from segregated schools into primary/secondary inclusive schools. Because parental rights will be different within each country, it is important that information and education for parents on the identification process policies and practices is country-specific.

2. **Build capacity of teachers and school staff through training, coaching, and mentorship:** Assessment center staff's knowledge, skills, and expertise will be critical throughout the transition to support school-based identification practices. They can share their expertise with teachers and school teams as those teachers and teams begin to implement identification practices directly within classrooms. Assessment center coaches and mentors can also share expertise on an ongoing basis as they collaborate with school teams to begin the new identification process. In addition to these supports, assessment center staff can support systematic change through the following activities:
- a. **Training teachers on student identification and qualifications for services.** Because all teachers have students with disabilities in their classroom, it is important that all teachers are prepared as student teachers to conduct screenings and serve as part of a multidisciplinary team for evaluations. Ideally, special education teachers will also be available to lead this process and would need to receive additional training on best practices related to identification.
- Similarly, after teachers are employed they must receive regular and ongoing training related to inclusive education and evaluation practices (Forlin, 2001). This training can come from assessment center staff,

nongovernmental organizations (NGOs), and others, and should be a part of core in-service trainings.

- b. **Developing and revising identification tools as needed.** Screening and evaluation tools need to be tailored to reflect the cultural norms of the environment in which they are used. This may require developing of new tools, refining existing tools, or both. Staff coming from assessment centers can use their expertise to help develop, pilot, refine, and revise tools as needed before implementing them at a national level within classrooms. All new or adapted tools should be validated with children with disabilities in the new context.

Such a refinement process would require that assessment center staff have access to evaluations that are easily adaptable to any environment and can be implemented with existing school resources (e.g., paper and pencil). For more information on these types of adaptable inclusive identification practices, see USAID's Toolkit on Literacy (Hayes, Turnbull, & Moran, 2018b).

3. **Serve as supports and resources for referring families to community services:** Even as education systems transition to providing identification practices as a service rather than a place, assessment center staff will have a role within the newly revised system. This repurposed role will allow individuals with experience and skills in this area to serve as a resource for classroom-based teams as needed. This role can include providing ongoing professional development to schools and families, answering questions and providing support related to challenges that school teams may have, continuing to strengthen tools as needed, and serving as a resource to refer families to existing community services that may be helpful for students who would benefit from additional services or access to assistive devices. Additional support from the resource center can include the following:
- a. **Developing and maintaining community referral options.** Throughout the identification process, additional referrals may be needed.

Such referrals can include more-detailed vision and hearing testing conducted by medical experts, access to assistive devices, and additional community supports and therapies that may not yet be offered through the school systems. Assessment center staff are in a unique position to collect data, update and maintain information on additional community resources and referral options, and share this information with schools as needed. It is important to note that all school placement options should be the decision of the parents and students with disabilities and not be made by the assessment center or the government.

Likewise, for an educational system to be truly inclusive, all students with disabilities should be allowed to attend their local schools, and the referral process should not include recommendations to attend segregated schools. The only exception is education for students who are deaf. The World Federation of the Deaf (2018) defines inclusive education as the ability to interact directly with their peers and their teachers, which means being in a communication-rich environment that uses local sign language.

- b. **Reallocating school resources.** Conceptualizing inclusive education as a service rather than a place can help shape thinking about how formerly segregated school resources are reallocated (Theoharis & Causton, 2014). Inclusive education does not necessarily mean that more money needs to be spent supporting students with disabilities (Van Dyke, Stallings, & Colley, 1995); rather, it means thinking creatively about support and resource allocation. For example, if dormitory aides and instructional aides were formerly paid to help support students with disabilities in segregated schools, they can work at the inclusive school in their local area, for example helping families transport their children to school and work in inclusive classrooms.
- Governments can also provide incentives to parents to take their children with disabilities to the schools they would attend in the absence

of a disability. Such incentives could include subsidizing transport for aides and students to and from school, providing free or reduced-price school uniforms, providing partial or full vouchers for school fees, and providing food subsidies.

- c. **Supporting uploading data from identification into the national Education Management Information System (EMIS).** Although a specific diagnosis is not needed to provide instruction for students, having data on the number of students who qualify for special education services can be useful for a variety of reasons. Having disability data can help inform national budgets, inform the need for assistive technologies, identify background information for students who are “at risk,” and support the monitoring and evaluation of interventions (Croft, 2013).

School systems can collect such data through household surveys and census information as well as through EMIS. It is therefore recommended that questions related to disability, accommodations, accessibility, and inclusion be added to a country’s EMIS. For more information on how to include students with disabilities in EMIS, please visit the United Nations International Children’s Emergency Fund’s (UNICEF) (2016) Guide for Including Disability in Education Management Information Systems.

Identifying Students with Disabilities Within a School-Based System

As education systems transition to school-based identification and diagnosis of disabilities, schools can review and strengthen their identification and diagnosis processes and tools. The purpose of identifying students with disabilities in the school is to assess possible learning challenges, learning strengths, and types of services or supports that students may need to reach their full academic potential. Information and insights obtained through this process can help inform instructional techniques, accommodations, assistive technologies, and other methods to help students receive an inclusive

education. The purpose of identification is not to label a child as having a disability without providing additional supports or to use information obtained through the identification process to justify exclusion. Rather, the purpose of identification and diagnosis should solely be to identify the most-effective learning supports for a student.

Ideally, identification should use a phased approach, be conducted within the classroom and school setting, include a multidisciplinary team of professionals, and engage families throughout the process (Hayes, Dombrowski, et al., 2018a). This phased approach can be implemented over time at a pace that is manageable within the resources available to an education system. Systems that are struggling to find or reallocate resources can focus on implementing low-cost vision and hearing screening in schools, while systems that have more resources or are farther in their journey to inclusive education and have already addressed vision- and hearing-related disabilities can explore how to screen for other types of disabilities and strengthen referral and support systems for students who are struggling to learn (see, for example, Hayes & Bulat, 2017).

The recommended phased approach for screening and identification is as follows:

- **Phase 1. Establish school-wide vision and hearing screenings for all students:** All students should receive routine vision and hearing screenings in a classroom setting. Screeners should refer students for additional screenings or supports if needed. Vision and hearing challenges must be ruled out before conducting additional screening and evaluation (Friend & Bursuck, 2018). After the screenings, students who are determined to need further testing should receive a full vision and hearing test from a qualified professional and then receive the necessary supports (e.g., hearing aids, glasses).
- **Phase 2. Establish screenings for other learning needs:** Even after ruling out vision or hearing challenges, many students may continue to struggle to perform academically in the classroom and require screenings to assess whether they would benefit from additional teaching supports and special education services within the inclusive

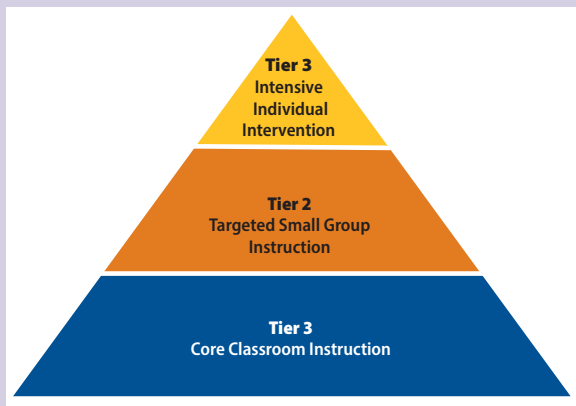
Response to Intervention

Response to Intervention is used across the United States and Europe and is slowly being introduced in Africa and Asia. Response to Intervention encourages teachers to regularly screen all students within a classroom to identify which ones may be consistently struggling academically and to then provide targeted and individualized instruction as needed using three tiers of increasingly intensive instruction.

- Tier 1 refers to quality general education, in which the teacher strives to improve overall classroom instruction for all students, acknowledging that 80 percent of the students will likely demonstrate academic progress; screening in Tier 1 determines which students may be struggling and should be considered for Tier 2 support.
- Tier 2 refers to small group interventions. Under Tier 2, students who continue to struggle to learn the content being taught despite quality instruction under Tier 1 are grouped by the teacher by skill level, with the teacher providing targeted small-group instruction while continually monitoring progress.
- Tier 3 refers to the most intensive level of support provided to students who continue to struggle even with Tier 2 intervention. Tier 3 intervention can take the form of small group or individual work and is often provided to students outside of the classroom. Students within Tier 3 may benefit from receiving a comprehensive evaluation that uses information from Response to Intervention, as well as other tools, to determine whether a student may be eligible for special education services.

All tiers within Response to Intervention are meant to be conducted within inclusive settings and are not designed as a means to segregate children from the general education classroom. Figure 2 shows the different tiers of Response to Intervention.

Figure 2. Tiered levels of support within Response to Intervention

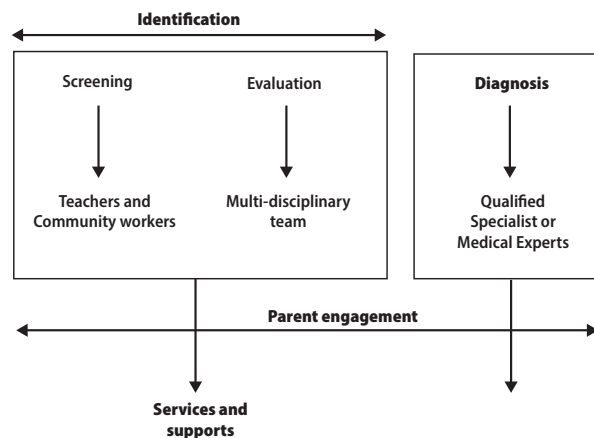


Note: For more information about Response to Intervention and how it can be used in LMICs, please visit RTI International's School and Classroom Disabilities Inclusion Guide for Low-and Middle-Income Countries.

classroom setting. One of the most-effective screening approaches is Response to Intervention (see textbox), which uses systematic and evidence-based activities to determine additional learning needs. This method is often preferred over other methods, as it allows for all students to be screened and proactively provides targeted interventions for those who are struggling academically.

- **Phase 3. Establish evaluations with multidisciplinary teams:** Students who continue to struggle academically and those who have a suspected or known disability need a more-comprehensive evaluation to identify underlying causes. This evaluation should be conducted by a multidisciplinary team and be used to determine a student's academic, behavioral, and social strengths and challenges. Information from this evaluation can help determine whether a student would benefit and qualify for special education services as well as inform possible instructional approaches and accommodations that should be listed within a student's IEP. One effective method for evaluations is using an ecological assessment. Ecological assessments compare students with possible disabilities to other same-aged peers within their classroom and consider some of the teaching or environmental varies that may be influencing students' progress. See the Focus on Practice textbox for more information on ecological assessments.

Figure 3. Distinguishing between screening and diagnosis



Source: Hayes, Turnbull, & Moran, 2018b.

The phased approach outlined above is often poorly understood worldwide. Common errors include using screening techniques (with no formal evaluation process) to identify students as having a disability; using non-adapted or non-validated identification tools; not fully engaging families; and not conducting screenings or evaluations in the school or classroom setting (Hayes, Dombrowski, et al., 2018a). Likewise, too often the focus of identification emphasizes providing a label or diagnosis rather than focusing on the individual student and the academic support that they may need. There is also often confusion on who is qualified to screen students versus provide a diagnosis. Although screening can be done by community workers and teachers, diagnosis should only be done by trained professionals or medical experts. Figure 3 provides more information on the different roles of this process.

Conclusion

Identification and eligibility for special education services are core elements of any inclusive education system. Ideally, school-based identification provides students, teachers, the school team, and parents with insights, knowledge, and tools on how to utilize students' strengths while providing additional supports to address potential challenges. These supports then help facilitate academic instruction within an inclusive classroom setting. Unfortunately, many countries that are working toward implementing an inclusive system continue to support identification systems that are more aligned with segregation than inclusion. As part of a country's transition toward inclusion, a country should reform its identification systems to support school-based identification practices. Especially where resources are limited, such as in LMICs, this proposed process can take place gradually while building upon and refocusing existing resources and slowly filling possible gaps in services. Identification systems that are solely diagnosis-based without observing students in the classroom setting do not engage families and often result in recommendations for student placement in segregated settings, which directly contradicts to the principles of the CRPD. Therefore, recognizing student identification as a service rather than a segregated place (e.g., assessment center) is paramount to achieving universal inclusive education that is aligned with the CRPD and the sustainable development goals.

References

- Abosi, O. (2007). Educating children with learning disabilities in Africa. *Learning Disabilities Research & Practice, 22*(3), 196–201. <https://doi.org/10.1111/j.1540-5826.2007.00242.x>
- Arthur-Kelly, M., & Foreman, P. (2017). Australia. In M. J. Wehmeyer & J. Patton (Eds.), *The Praeger international handbook of special education (Vol. 3)*, pp. 279–288. Santa Barbara, CA: Praeger.
- Avoke, S. K., & Hayford, S. K. (2017). Republic of Ghana. In M. J. Wehmeyer & J. Patton (Eds.), *The Praeger international handbook of special education (Vol. 1)*, pp. 352–367. Santa Barbara, CA: Praeger.
- Beukelman, D., & Mirenda, P. (2013). *Augmentative and alternative communication: Supporting children and adults with complex communication needs*. Baltimore, MD: Brookes.
- Björn, P. M., Aro, M. T., Koponen, T. K., Fuchs, L. S., & Fuchs, D. H. (2016). The many faces of special education within RTI Framework in the United States and Finland. *Learning Disability Quarterly, 39*(1), 58–66. <https://doi.org/10.1177/0731948715594787>
- Cavkaytar, A., Uyanik, H., & Yucesoy-Ozkan, S. (2017). Republic of Turkey. In M. J. Wehmeyer & J. Patton (Eds.), *The Praeger International Handbook of Special Education (Vol. 3)*, pp. 251–264. Santa Barbara, CA: Praeger.
- Chitiyo, M., Chitiyo, J., & Charema, J. (2017). Zimbabwe. In M. J. Wehmeyer & J. R. Patton (Eds.), *The Praeger International Handbook of Special Education (Vol. 1)*, pp. 278–288. Santa Barbara, CA: Praeger.
- Croft, A. (2013). Promoting access to education for disabled children in low-income countries: Do we need how many disabled children there are? *International Journal of Educational Development, 33*(3), 233–243. <https://doi.org/10.1016/j.ijedudev.2012.08.005>
- Damiani, M., Elder, B., & Okongo, T. O. (2016). Tangible first steps: Inclusion committees as a strategy to create inclusive schools in Western Kenya. *Disability and the Global South, 3*(1), 865–888.
- Deng, M., & Wang, S. (2017). China. In M. J. Wehmeyer & J. R. Patton (Eds.), *The Praeger International Handbook of Special Education (Vol. 3)*, pp. 3–14. Santa Barbara, CA: Praeger.
- Downing, J. E., Hanreddy, A., & Peckham-Hardin, K. (2015). *Teaching Communication Skills to Students with Severe Disabilities* (3rd ed.). Baltimore, MD: Brooks Publishing.
- Drame, E. R., Lancaster, K., & Duval-Diop, D. (2017). The Republic of Senegal. In M. J. Wehmeyer & J. Patton (Eds.), *The Praeger International Handbook of Special Education (Vol. 1)*, pp. 383–402. Santa Barbara, CA: Praeger.
- Dyssegaard, C. B., & Egelund, N. (2017). Denmark. In M. J. Wehmeyer & J. Patton (Eds.), *The Praeger international handbook of special education (Vol. 2)*, pp. 67–74. Santa Barbara, CA: Praeger.
- Elder, B., & Kuja, B. (2018). Going to school for the first time: Inclusion committee members increasing the number of students with disabilities in primary schools in Kenya. *International Journal of Inclusive Education, 23*(3), 261–279. <https://doi.org/10.1080/13603116.2018.1432082>
- Elder, B., Rood, C. E., & Damiani, M. (2018). Writing strength-based IEPs for students with disabilities in inclusive classrooms. *International Journal of Whole Schooling, 14*(1), 116–153.
- Farrall, M. L., Wright, P. D., & Wright, P. (2015). *All about tests & assessments: Answers to frequently asked questions*. Hartfield, VA: Harbor House Law Press, Inc.
- Fish, W. W. (2008). The IEP meeting: Perceptions of parents of students who receive special education services. *Preventing School Failure, 53*(1), 8–14. <https://doi.org/10.3200/PSFL.53.1.8-14>
- Forlin, C. (2001). Inclusion: Identifying potential stressors for regular class teachers. *Educational Research, 43*(3), 235–245. <https://doi.org/10.1080/00131880110081017>
- Friend, M., & Bursuck, W. D. (2018). *Including students with special needs: A practical guide for classroom teachers* (8th ed.). New York, NY: Pearson.
- Gaffney, J. S., Morton, M., & Hart, S. M. (2017). New Zealand. In M. J. Wehmeyer & J. Patton (Eds.), *The Praeger International Handbook of Special Education (Vol. 3)*, pp. 289–303. Santa Barbara, CA: Praeger.

- Government of Sweden. (2012). *Country report for the United Nations Convention on the Rights of Persons with Disabilities*. Retrieved from https://tbinternet.ohchr.org/_layouts/treatybodyexternal/Download.aspx?symbolno=CRPD%2fC%2fSWE%2f1&Lang=eng
- Hayes, A. M., and Bulat, J., (2017). *Disabilities inclusive education systems and policies guide for low- and middle-income countries*. (RTI Press Publication No. OP-0043–1707). Research Triangle Park, NC: RTI Press. <https://doi.org/10.3768/rtipress.2017.op.0043.1707>
- Hayes, A. M., Dombrowski, E., Shefcyk, A. H., & Bulat, J. (2018a). *Learning disabilities screening and evaluation guide for low- and middle-income countries*. (RTI Press Publication No. OP-0052–1804). Research Triangle Park, NC: RTI Press. <https://doi.org/10.3768/rtipress.2018.op.0052.1804>
- Hayes, A. M., Turnbull, A. P., & Moran, N. (2018b). *Universal design for learning to help all children read: Promoting literacy for learners with disabilities*. Retrieved from https://www.globalreadingnetwork.net/sites/default/files/resource_files/Literacy%20for%20All%20Toolkit_0.pdf
- Heckman, J., & Masterov, D. V. (2005). *The productivity argument for investing in young children*. IL: Retrieved from Chicago.
- Hehir, T., Grindal, T., Freeman, B., Lamoreau, R., Borquaye, Y., & Burke, S. (2016). *A summary of the evidence on inclusive education*. Retrieved from https://alana.org.br/wp-content/uploads/2016/12/A_Summary_of_the_evidence_on_inclusive_education.pdf
- Itimu-Phiri, A. N., Gwayi, S. M., & Itimu, A. E. (2017). The Republic of Malawi. In M. J. Wehmeyer & J. Patton (Eds.), *The Praeger international handbook of special education* (Vol. 1, pp. 225–239). Santa Barbara, CA: Praeger.
- Jarvinen, R. (2007). *Current trends in inclusive education in Finland*. Retrieved from http://www.ibe.unesco.org/fileadmin/user_upload/Inclusive_Education/Reports/sinaia_07/finland_inclusion_07.pdf
- Karangwa, E. (2017). Rwanda. In M. J. Wehmeyer & J. Patton (Eds.), *The Praeger international handbook of special education* (Vol. 1, pp. 240–253). Santa Barbara, CA: Praeger.
- Karasu, N. (2014). Guidance and research centers of Turkey: From the perspective of parents. *European Journal of Special Needs Education*, 29(3), 358–369. <https://doi.org/10.1080/08856257.2014.909176>
- Kartasidou, L., & Pavlidou, E. (2017). Greece. In M. J. Wehmeyer & J. Patton (Eds.), *The Praeger International Handbook of Special Education* (Vol. 3, pp. 166–178). Santa Barbara, CA: Praeger.
- Kassar, M. C. M., & Magario, R. (2017). Brazil. In M. J. Wehmeyer & J. Patton (Eds.), *The Praeger International Handbook of Special Education* (Vol. 1, pp. 171–181). Santa Barbara, CA: Praeger.
- Killoran, I., & Parekh, G. (2017). Province of Ontario, Canada. In M. J. Wehmeyer & J. Patton (Eds.), *The Praeger International Handbook of Special Education* (Vol. 1, pp. 112–126). Santa Barbara: Praeger.
- MacKenzie, A. (2017). Northern Ireland. In M. J. Wehmeyer & J. Patton (Eds.), *The Praeger international handbook of special education* (Vol. 2, p. 120130). Santa Barbara, CA: Praeger.
- Melekoglu, M. A., Cakiroglu, O., & Malmgren, K. W. (2009). Special education in Turkey. *International Journal of Inclusive Education*, 13(3), 287–298. <https://doi.org/10.1080/13603110701747769>
- Ministry of Education. (2008). *The development of education: National report of Kenya*. Retrieved from http://www.ibe.unesco.org/fileadmin/user_upload/archive/National_Reports/ICE_2008/kenya_NR08.pdf
- Mortier, K., & Vandelanotte, P. (2017). Belgium. In M. J. Wehmeyer & J. Patton (Eds.), *The Praeger international handbook of special education* (Vol. 2, pp. 249–262). Santa Barbara, CA: Praeger.
- Mukuria, G., & Korir, K. (2006). Education for children with emotional and behavioral disorders in Kenya: Problems and prospects. *Preventing School Failure*, 50(2), 49–54. <https://doi.org/10.3200/PSFL.50.2.49-54>
- Oakland, T. (2009). How universal are test development and use? In E. L. Grigorenko (Ed.), *Multicultural psychoeducational assessment* (pp. 1–49). New York, NY: Springer Publishing Company.
- Obiakor, F. E., & Eleweke, C. J. (2017). Federal Republic of Nigeria. In M. J. Wehmeyer & J. Patton (Eds.), *The Praeger international handbook of special education* (Vol. 1, pp. 368–383). Santa Barbara, CA: Praeger.

- Office of the High Commissioner for Human Rights. (2011). *United Nations convention on the rights of persons with disabilities Kenya state report*. Retrieved from http://www2.ohchr.org/SPdocs/CRPD/futuresession/CRPD.C.KEN.1_en.doc
- Okech, J. B. (2017). Uganda. In M. J. Wehmeyer & J. Patton (Eds.), *The Praeger international handbook of special education (Vol. 1)*, pp. 254–264). Santa Barbara, CA: Praeger.
- Patton, J., & Wehmeyer, M. J. (2017). United States of America. In M. J. Wehmeyer & J. Patton (Eds.), *The Praeger International Handbook of Special Education (Vol. 1)*, pp. 143–155). Santa Barbara, CA: Praeger.
- RTI International. (2017). *Assessment on education of students with disabilities in Jordan: Final report*. Retrieved from <https://shared.rti.org/content/assessment-education-students-disabilities-jordan-final-report>
- Rose, R., & Qureshi, S. (2017). England. In M. J. Wehmeyer & J. Patton (Eds.), *The Praeger International Handbook of Special Education (Vol. 2)*, pp. 151–164). Santa Barbara, CA: Praeger.
- Rutland, J., & Hall, A. H. (2013). *Involving families in the assessment process*. Retrieved from https://tigerprints.clemson.edu/cgi/viewcontent.cgi?referer=https://www.google.com/&httpsredir=1&article=1024&context=eugene_pubs
- Sæbønes, A. M., Berman Bieler, R., Baboo, N., Banham, L., Singal, N., Howgego, C., . . . Dansie, G. A. (2015). *Towards a Disability Inclusive Education*. Paper presented at the Oslo Summit on Education for Development, Oslo, Norway. https://www.usaid.gov/sites/default/files/documents/1865/Oslo_Ed_Summit_DisabilityInclusive_Ed.pdf
- Stough, L. M. (2003). Special education and severe disabilities in Costa Rica: Developing inclusion in a developing country. *Research and Practice for Persons with Severe Disabilities*, 28(1), 7–15. <https://doi.org/10.2511/rpsd.28.1.7>
- Theoharis, G., & Causton, J. (2014). Leading inclusive reform for students with disabilities: A school- and systemwide approach. *Theory into Practice*, 53(2), 82–97. <https://doi.org/10.1080/00405841.2014.885808>
- United Nations. (2006). *Convention on the rights of persons with disabilities* Retrieved from <https://www.un.org/development/desa/disabilities/convention-on-the-rights-of-persons-with-disabilities.html>
- United Nations. (2015). *Sustainable development goals (SDGs)*. Retrieved from <https://sustainabledevelopment.un.org/sdgs>
- United Nations. (2016). *General comment No. 4 on the right to inclusive education. Convention on the rights of persons with disabilities*. Retrieved from <https://www.ohchr.org/EN/HRBodies/CRPD/Pages/GC.aspx>
- United Nations. (2019). *Ratifications of the United Nations Convention on the Rights of Persons with Disabilities*. Retrieved from <https://www.un.org/development/desa/disabilities/convention-on-the-rights-of-persons-with-disabilities.html>
- United Nations International Children's Emergency Fund (UNICEF). (2016). *Guide for including disability in education management information systems*. Retrieved from New York, New York: http://training.unicef.org/disability/emergencies/downloads/UNICEF_guide-for-including-disability-in-education-management-information-systems.pdf
- United States Agency for International Development (USAID). (2018). *USAID educational policy*. Retrieved from https://www.usaid.gov/sites/default/files/documents/1865/2018_Education_Policy_FINAL_WEB.pdf
- Van Dyke, R., Stallings, M. A., & Colley, K. (1995). How to build an inclusive school community. *Phi Delta Kappan*, 76(6), 1–8.
- Wehmeyer, M. J. & Patton, J. (Eds.). (2017). *The Praeger international handbook of special education*. Santa Barbara, CA: Praeger.
- Wilder, J., & Klang, N. (2017). Sweden. In M. J. Wehmeyer & J. Patton (Eds.), *The Praeger international handbook of special education (Vol. 2)*, pp. 104–118). Santa Barbara, CA: Praeger.
- World Federation of the Deaf. (2018). *WFD position paper on inclusive education*. Retrieved from <https://wfdeaf.org/wp-content/uploads/2018/07/WFD-Position-Paper-on-Inclusive-Education-5-June-2018-FINAL-without-IS.pdf>
- World Health Organization & World Bank. (2011). *World report on disability*. Geneva, Switzerland: World Health Organization.

RTI International is an independent, nonprofit research institute dedicated to improving the human condition. We combine scientific rigor and technical expertise in social and laboratory sciences, engineering, and international development to deliver solutions to the critical needs of clients worldwide.

www.rti.org/rtipress

RTI Press publication OP-0064-2004