



OPEN ACCESS

Minimal intervention delivered by 2-1-1 information and referral specialists promotes smoke-free homes among 2-1-1 callers: a Texas generalisation trial

Patricia Dolan Mullen,¹ Lara S Savas,¹ Łucja T Bundy,² Regine Haardörfer,² Mel Hovell,³ Maria E Fernández,¹ Jo Ann A Monroy,¹ Rebecca S Williams,⁴ Matthew W Kreuter,⁵ David Jobe,⁶ Michelle C Kessler²

¹Center for Health Promotion and Prevention Research, University of Texas School of Public Health, Houston, Texas, USA

²Department of Behavioral Sciences and Health Education, Emory Prevention Research Center, Rollins School of Public Health, Emory University, Atlanta, Georgia, USA

³Center for Behavioral Epidemiology and Community Health, Graduate School of Public Health, San Diego State University, San Diego, California, USA

⁴Center for Health Promotion and Disease Prevention and Lineberger Cancer Center, University of North Carolina—Chapel Hill, Chapel Hill, North Carolina, USA

⁵Health Communication Research Laboratory, Washington University, St. Louis, Missouri, USA

⁶2-1-1 Texas/United Way HELPLINE, United Way of Greater Houston, Houston, Texas, USA

Correspondence to

Dr Patricia Dolan Mullen, University of Texas School of Public Health, 7000 Fannin Street, Suite 2522, Houston, TX 77030, USA; Patricia.D.Mullen@uth.tmc.edu

Received 11 March 2016

Revised 1 August 2016

Accepted 2 August 2016

ABSTRACT

Background Replication of intervention research is reported infrequently, limiting what we know about external validity and generalisability. The Smoke Free Homes Program, a minimal intervention, increased home smoking bans by United Way 2-1-1 callers in randomised controlled trials in Atlanta, Georgia and North Carolina.

Objective Test the programme's generalisability-external validity in a different context.

Methods A randomised controlled trial (n=508) of English-speaking callers from smoking-discordant households (≥ 1 smoker and ≥ 1 non-smoker). 2-1-1 Texas/United Way HELPLINE call specialists serving the Texas Gulf Coast recruited callers and delivered three mailings and one coaching call, supported by an online tracking system. Data collectors, blind to study assignment, conducted telephone interviews 3 and 6 months postbaseline.

Results At 3 months, more intervention households reported a smoke-free home (46.6% vs 25.4%, $p < 0.0001$; growth model intent-to-treat OR=1.48, 95% CI 1.241 to 1.772, $p < 0.0001$). At 6 months, self-reported full bans were 62.9% for intervention participants and 38.4% for controls (OR=2.19). Texas trial participants were predominantly women (83%), single-smoker households (76%) and African-American (65%); half had incomes \leq US\$10 000/year (50%). Texas recruitment was $< 50\%$ of the other sites. Fewer callers reported having a smoker in the household. Almost twice the callers with a household smoker declined interest in the programme/study.

Conclusions Our findings in a region with lower smoking rates and more diverse callers, including English-speaking Latinos, support programme generalisability and convey evidence of external validity. Our recruitment experience indicates that site-specific adjustments might improve recruitment efficiency and reach.

Trial registration number NCT02097914, Results.

INTRODUCTION

Despite decreasing rates of secondhand smoke exposure (SHSe) among US non-smokers, 58 million adults and children were still exposed in 2011–2012, and households with young children, non-Latino African-Americans and adults with lower education levels and living in poverty had the highest risk for SHSe.^{1–6} Annually, SHSe causes 41 000 deaths among non-smoking adults, 400

infant deaths and an estimated US\$5.6 billion loss in productivity.^{7 8}

Household smoking bans decrease SHSe of non-smokers,^{1 9–11} decrease smokers' cigarette consumption and increase their quit attempts.^{10 12–17} Yet, most intervention research to reduce SHSe has been conducted in clinical settings with relatively intensive counselling on exposure levels with parents of infants and of children who have asthma or are medically compromised.^{18–27}

To increase protection of healthy children and non-smoking adults from SHSe, we developed the *Smoke-Free Homes Program: Some Things are Better Outside*. This is a minimally intensive programme with three mailings and a single counselling telephone call, implemented in partnership with 2-1-1 social services information and referral (I&R) systems. Annually, US 2-1-1 I&R specialists connect 15 million socioeconomically disadvantaged, uninsured/underinsured callers to community social and health resources, such as rent and utility assistance, healthcare referrals and case management.²⁸ With its coverage of 93% of US communities, the 2-1-1 national I&R system is a natural partner for interventions for vulnerable populations, including those with higher rates of tobacco use and smoking in the home.^{29–32}

The programme's goal of home smoking bans was intended for smokers and non-smokers and was based on 90 interviews with low-income families in rural Georgia to understand household dynamics around creating smoking bans^{33 34} and on a pilot study with 40 participants.³⁵ As described in previous reports,^{32 35} the theoretical framework combined social cognitive theory and stages of change (transtheoretical model). Theory-based change methods^{36 37} included persuasion, role modelling, goal setting, environmental cues and written and oral reinforcement of actions taken to create a smoke-free home.^{38 39} Materials mailed at 2-week intervals focused on a five-step process for establishing a home smoking ban^{32 35} and included a five-step guide, a *photo novella*, family pledge, stickers, window cling signs and a fact sheet. A 15–20 min coaching call following the first mailing emphasised goal setting, problem solving and reinforcement and rehearsed barriers and possible solutions to creating a ban.

The Smoke-Free Homes research agenda included the pilot study,³⁵ followed by three randomised trials. The vanguard trial conducted in



CrossMark

To cite: Mullen PD, Savas LS, Bundy ŁT, et al. *Tob Control* 2016;**25**:i10–i18.

Atlanta, Georgia, by Emory University researchers with United Way of Greater Atlanta 2-1-1 found a higher uptake of full bans 6 months postbaseline in the intervention group compared with the controls (OR=1.56).³² The second trial in North Carolina (NC) by the University of North Carolina-Chapel Hill researchers with the state United Way added elements of an effectiveness trial⁴⁰—delivery of the mailings and the coaching call by 2-1-1 I&R specialists. The NC trial continued strong University support in training, certifying and supervising 2-1-1 staff. This trial relied on self-reported outcomes (table 1).

Atlanta had facilitated recruitment delivery of the mailings and follow-up data collection with a custom-built online tracking tool; the NC trial added the coaching call to the online tracking tool and 2-1-1 staff delivered the call. NC's results (OR=1.72) were similar to Atlanta's, after considering possible inflation for self-report and a more challenging population profile, for example, NC trial participants had more smokers in their household.⁴³ To inform dissemination, our trial replicated the NC protocol in the Texas Gulf Coast 2-1-1 centre, which has a larger call volume (25 000 calls/day) and serves a more diverse population (more Latinos and Asians) and is set in an area with a lower smoking prevalence (Houston Standard Metropolitan Statistical Area=15.6% and Corpus Christi Public Health Region=16.7%).⁴⁴

Intervention replication is reported infrequently, thus limiting what we know about the external validity and generalisability of the interventions.⁴⁵ Failure to replicate initial studies in psychology and other disciplines and reported gaps between research and practice in public health^{46–50} have led to calls for greater emphasis on replication. Results from one modelling report suggest that at least three replications are needed to establish an effect, that is, internal validity.⁵¹ This analysis and other discussions coincide with calls to test generalisability (external validity) across varied settings, contexts, populations and times to establish a reliable evidence base for practice.^{47 48 52}

As implied above, the efficacy-effectiveness distinction is a continuum, not a dichotomy;^{40 53} a test of generalisability should not change all variables at once, especially implementation fidelity. Thus, 'voltage drop', where efficacious programmes typically achieve a lower magnitude of effect in new settings and populations, is attributed to contextual issues, implementation, more heterogeneous participants and other factors that are sometimes, unfortunately, confounded in a single replication study.⁵⁴

Trial replication across research teams, populations, locations and time involves systematically repeating the methods under varying contexts that involve systematic and random errors,

which differ by site. These sources of errors can bias towards the null hypothesis by reducing intervention dose and fidelity (ie, effect size) or reducing study power to detect a similar effect. When three or more replications attain significant effects at all sites, the chance that all independent replications show significant findings is exceedingly low.⁵¹ It is this low probability of consistent findings in each different replication context that makes it possible to conclude external validity and to some degree construct (theoretical) validity.

Thus, the Texas trial was expected to serve as a robust test of recruitment generalisability, implementation fidelity and effectiveness by replicating the NC protocol and varying only the population and context. Continuity of the delivery system (2-1-1) supported by the protocol manual and online tracking system was expected to maintain implementation fidelity. In addition, this work provided the opportunity to compare intervention reach and delivery across studies and to suggest context-specific adaptations.

METHODS

We conducted a single-blind, randomised controlled trial with 2-1-1 Texas/United Way HELPLINE Greater Houston (2-1-1 Texas) callers from March 2014 to November 2015. Eligible participants (one per household) were 18 years or older, could speak and understand English, were either a smoker living with one or more non-smokers (including children) or a non-smoker living with one or more smokers and resided in a home without a total smoking ban. Assessments were completed by 2-1-1 Texas staff at baseline and by University staff at 3 and 6 months postbaseline. All 2-1-1 Texas and University staff in the roles of recruiter, coach or follow-up interviewer completed five consecutive satisfactory recordings before certification; subsequently, 10% of calls were recorded and reviewed for protocol adherence.

All aspects of the study were managed via the custom-built, online tracking tool. The tool produced notifications when an outstanding task was due and when that activity was completed (or missed within the specified time), and it scheduled the next task. An address verification tool, SmartyStreets,⁵⁵ embedded in the tracking tool checked for correct addresses at enrolment.

2-1-1 Texas is the largest US 2-1-1 centre by call volume (2500 calls/day). The United Way in Houston has operated a helpline since 1947, transitioning in 2002 to 2-1-1 and has become the area information centre for the Texas Gulf Coast, a 13-county region, which includes Houston and extends to Corpus Christi. 2-1-1 Texas employs 65 I&R specialists. This trial continued an active partnership;^{29 56–58} a subcontract compensated I&R specialists' time to fulfil programme duties.

Recruitment, enrolment and random assignment

Atlanta and NC project coordinators conducted a 1-day, in-person training session to review and practice procedures and baseline interviews for I&R specialists selected as recruiters (n=5). After providing the standard service for non-crisis callers, recruiters described the study as promoting healthier homes by reducing SHSe and asked whether there was a smoker living in the caller's household. Those reporting one or more smokers were asked about their interest in participating in the programme/study and assessed for further eligibility and consent; the consent script mentioned US\$25 gift cards for baseline, and each completed the follow-up interview. The recruiter administered the baseline interview, and the tracking tool then randomly assigned participants to the control or intervention group.

Table 1 Comparison of Atlanta and NC Trial elements and context

Trial	Atlanta	North Carolina
Recruiters	2-1-1 staff	2-1-1 staff
Participants	All eligible, consenting callers	All eligible, consenting callers
Intervention deliverers	University staff	2-1-1 staff
Follow-up interviewers	University staff	University staff
Outcome measure	Self-report+nicotine monitors	Self-report
2-1-1 call volume (at the time of the trial)	1050/day	341/day
Area smoking rates	Atlanta public health region=17.5% ⁴¹	NC state=21.2% ⁴²

Bolded items differ between the two trials. NC, North Carolina.

Intervention delivery

The content, number and timing of the three intervention mailings and single coaching call were the same as in the Atlanta³² and NC trials.⁴³ In-person training by Atlanta and NC project coordinators prepared I&R specialists selected as programme coaches (n=2 females). Coaching calls were made 2 weeks after the first mailing, and 12 call attempts, 2 letters/text messages and, if available, 3 call attempts to an emergency contact were permitted. Following participant confirmation to begin, the coaching call typically took 10–20 min to complete.

Follow-up data collection

University staff who were blind to the study condition completed 20–30 min telephone interviews at 3 and 6 months post-baseline. The contact protocol included up to 12 call attempts, 2 mailed letters/text messages and up to 3 attempts to reach an alternant contact, triggered and monitored by the tracking tool.

Measures

Measures were specified in advance and based on standardised items, described by Kegler *et al.*,³² used in the previous trials and were collected at the same intervals and manner. The exception was that Atlanta had used home air nicotine monitors to validate 3-month reports and reminded participants before the interview of the possibility of a monitor placement request.

Our primary outcome was self-reported, full home smoking bans at both follow-ups. A full ban was defined as not allowing smoking anywhere inside the home, a partial ban allowed smoking in some places or at certain times or by some people and no ban if smoking was allowed anywhere, without rules.⁵⁹

At baseline, we asked smokers the number of cigarettes smoked per day, quit attempts (daily smokers only) and confidence in quitting,⁶⁰ as possible spillover effects not targeted directly by the programme.

Descriptors included participants' baseline demographic characteristics (gender, race/ethnicity, employment, income, education, marital/partner status and age), smoking status and number of cigarettes smoked per day and household composition. At both follow-ups, participants reporting partial or full bans were asked about enforcement problems, 'How often are your smoking rules broken by someone?' (never/rarely/sometimes/very often).

The intervention process was measured by three sources. The tracking tool captured coaching calls completed and returned mailings. During the coaching call, respondents were asked whether they received mailing #1. The 3-month interview included questions about the receipt of materials, the extent they were read (none/some/most/all) and their personal relevance and usefulness and about the receipt of the coaching call and its usefulness and satisfaction (not at all/a little/somewhat/very).

Statistical analyses

Our analyses were specified in advance and replicated those from the previous trials. We calculated descriptive statistics of all key variables and then examined univariate and bivariate distributions for all relevant variables for each time point. In addition, we investigated patterns of missing data and group differences due to randomisation for all baseline demographic, smoking and household composition variables. Subsequently, we used hierarchical linear growth modeling to assess the intervention impact on all primary and secondary outcomes (intent-to-treat) with binary logistic (full/partial or no ban—binary outcome), ordinal logistic (full/partial/no ban), Poisson

(quit attempts) and linear multilevel models (number of cigarettes/day, confidence in quitting).⁶¹ This allowed us to model all available data (intent-to-treat), including all participants with a minimum of baseline data, that is, all randomised participants. On the basis of preliminary results from investigating trajectories, we modelled linear change over time and modelled the cross-level interaction effect of time and group assignment to assess the effectiveness of the intervention. We also conducted more conservative sensitivity analyses using the same growth curve models. Sensitivity analysis #1 assumed that all participants without follow-up data were failures. A second, very conservative sensitivity analysis added those who reported enforcement problems to those assumed to be failures. Analyses were conducted using SAS V.9.4 and HLM7.

RESULTS

Participants

Of 9953 callers asked whether there was a smoker living in the household, 8.8% refused or were not interested in the programme/study (figure 1). Of the remainder, 17.4% reported ≥ 1 smoker; 498 (31.5%) of those with ≥ 1 smoker declined further screening. Of the 625 who met all criteria, 81.3% enrolled. The most important reasons for loss were no household smoker and no interest in the programme/study.

Participants were predominantly women (82.9%), living in a single-smoker household (76.4%), not employed (71.3%), a smoker (71.3%), living with one or more children <18 years (68.3%), African-American (65.2%) and single, not living with a partner (58.3%) (table 2). Half were very low income, \leq US\$10 000/year (49.6%). At baseline, the majority (59.3%) reported having a partial ban, and the remainder had no home smoking restrictions. Study groups differed significantly on gender ($p=0.003$) and race/ethnicity ($p=0.03$), with the intervention group having larger proportions of women and African-Americans (table 2).

Follow-up was completed at 3 months by 72.2% of enrollees and at 6 months by 66.1% (figure 1). There were two missing data patterns at both follow-ups. More African-Americans (76.4%) were reached at 3 months than whites (62.5%; $p<0.01$) and at 6 months (70.1% vs 51.0%; $p<0.001$), and fewer intervention participants (67.4%) than controls (77.2%) were followed at 3 months ($p=0.01$). Similarly, fewer intervention participants (61.6%) than controls (70.8%) completed 6-month interviews ($p=0.03$).

Intervention delivery and response

According to the tracking tool, 253 (98%) of the 258 intervention participants did not have any mailing returned, and 186 (72.1%) completed a coaching call. All coaching call recipients said that they had received mailing #1 before the call. At the 3-month interview, 92.5% of interviewees reported receiving all of the materials; 72.1% said that they had received the coaching call. Most interviewees (74.4%) reported reading most/all materials, rating them as follows: related to them personally, very=48.8%, somewhat=34.4%; useful, very=58.8%, somewhat=30.0%. The coaching call was rated as follows: related to them personally, very=48.4%, somewhat=31.2%; useful, very=70.5%, somewhat=18.0%; satisfied, very=85.3%, somewhat=9.0%.

At 3 months, intervention participants reported whether they had taken programme-recommended intermediate actions: 73.1% talked with family about a ban, 66.9% made a list of reasons for a smoke-free home, 65.6% used the provided stickers and 54.4% put up the signs. Some (11.9%) reported that they or someone in their household called a smoking cessation service.

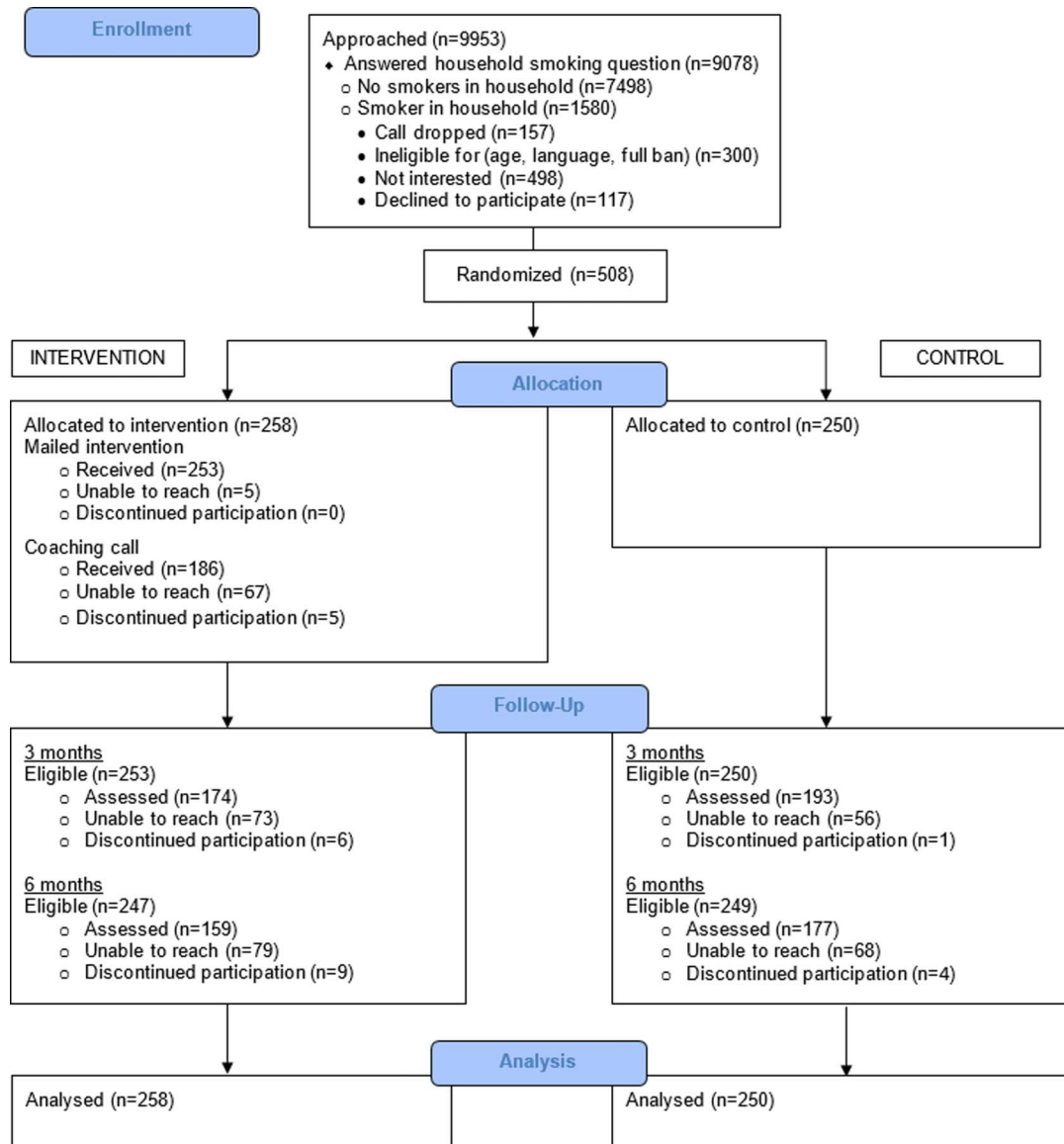


Figure 1 Consolidated Standards of Reporting Trials (CONSORT) flow diagram.

Intervention impact on primary and secondary outcomes

Primary outcome

Intervention participants were more likely than controls to report a full ban at both follow-ups. At 3 months, the proportions were 46.6% and 25.4% ($p < 0.0001$) and at 6 months, they were 62.9% and 38.4% ($p < 0.0001$), respectively (table 3). The longitudinal intent-to-treat analysis showed a significant intervention effect over time. At 3 months, the model OR was 1.48 (95% CI 1.241 to 1.772, $p < 0.0001$). This results in a predicted OR of 2.19 at 6 months, that is, 1.48 squared at the follow-up.⁶² Treating the ban as an ordinal variable (full/partial/no ban) also resulted in a significant treatment effect (table 3).

Exploratory results for Latinos ($n=61$ at baseline, $n=45$ at 3 months follow-up, $n=42$ at 6 months follow-up) indicated that 52.2% of the intervention group reported a full ban at 3 months compared with 36.4% of controls ($p=0.29$), and at 6 months, 57.1% of both groups reported a full ban ($p=1.00$).

Sensitivity analyses maintained statistically significant differences favouring the intervention group, although not in the growth model for the second very conservative sensitivity

analysis. When those lost to follow-up were defined as failures, results were 31.4% vs 19.6% ($p=0.002$) at 3 months and 38.8% vs 27.2% ($p=0.006$) at 6 months (growth model OR=1.23, 95% CI (1.073 to 1.409), $p=0.003$). When we defined success as only those reporting a full ban and no enforcement problems, the pattern was similar, with 17.1% vs 8.8% ($p=.006$) at 3 months and 24.0% vs 16.0% ($p=0.02$) at 6 months (growth model OR=1.13, 95% CI (0.951 to 1.342), $p=0.164$).

Secondary outcomes

Baseline smokers reported fewer cigarettes smoked daily (at both 3 months and in the intent-to-treat (ITT) analysis; however, their numbers of quit attempts and confidence in quitting did not differ (table 3).

Comparison of the three trials

Our participants differed from those in the other trials in that they had fewer smokers in the household, and they reflected the greater racial and ethnic diversity of the Texas Gulf Coast region. Our trial included more Latinos (12.0%) than Atlanta

Table 2 Study participants' baseline demographic, smoking and household characteristics

Characteristics	Total (n=508), no. (%) or mean±SD	Intervention (n=258), no. (%) or mean±SD	Control (n=250), no. (%) or mean±SD	p Value
Female	421 (82.9)	223 (86.4)	198 (79.2)	0.003
Race/ethnicity				
African-American	331 (65.2)	180 (69.8)	151 (60.4)	
Latino	61 (12.0)	33 (12.8)	28 (11.2)	
White	96 (18.9)	40 (15.5)	56 (22.4)	
Other	20 (3.9)	5 (1.9)	15 (6.0)	0.03
Employment				
Employed	146 (28.7)	69 (26.7)	77 (30.8)	
Unemployed/homemaker/retired/disabled/other	362 (71.3)	189 (73.3)	173 (69.2)	0.31
Income				
≤US\$10 000	252 (49.6)	124 (48.1)	128 (51.2)	
US\$10 001–US\$20 000	152 (29.9)	82 (31.8)	70 (28.0)	
US\$20 001–US\$35 000	65 (12.8)	32 (12.4)	33 (13.2)	
US\$35 001–US\$50 000	19 (3.7)	11 (4.3)	8 (3.2)	
≥US\$50 001	14 (2.8)	7 (2.7)	7 (2.8)	0.52
Missing	6 (1.2)	2 (0.7)	4 (1.6)	
Education				
Less than/some high school	109 (21.5)	54 (20.9)	55 (22.0)	
High school graduate/General education certificate	213 (41.9)	111 (43.0)	102 (40.8)	
Vocational/technical school/some College	161 (31.7)	82 (31.8)	79 (31.6)	
College graduate or higher	25 (4.9)	11 (4.3)	14 (5.6)	0.89
Marital status				
Not married, living with partner	114 (22.4)	63 (24.4)	51 (20.4)	
Married	97 (19.1)	43 (16.7)	54 (21.6)	
Single	296 (58.3)	152 (58.9)	144 (57.6)	0.28
Missing	1 (0.2)	–	1 (0.4)	
Age in years	41.1±12.65	40.4±12.42	41.9±12.86	0.16
Smoker	362 (71.3)	183 (70.9)	179 (71.6)	0.87
Number of cigarettes per day*	11.7±8.87	10.9±8.84	12.5±8.84	0.08
Number of smokers in the home				
1	388 (76.4)	194(75.2)	194 (77.6)	
2	56 (11.0)	32 (12.4)	24 (9.6)	
≥3	64 (12.6)	32 (12.4)	32 (12.8)	0.53
Number of non-smoking adults in the home				
0	129 (25.4)	66 (25.6)	63 (25.2)	
1	275 (54.1)	134 (51.9)	141 (56.4)	
≥2	104 (20.5)	58 (22.5)	46 (18.4)	0.55
Age of children in the home (years)				
5–18	181 (35.7)	92 (35.6)	89 (35.6)	0.27
1–4	116 (22.8)	63 (24.4)	53 (21.2)	0.28
<1	50 (9.8)	27 (10.5)	23 (9.2)	0.63
No children <18	161 (31.7)	76 (29.5)	85 (34.0)	
Home smoking ban status				
Partial ban	301 (59.3)	148 (57.4)	153 (61.2)	
No ban	207 (40.7)	110 (42.6)	97 (38.8)	0.38

Percentages may not total 100% because of rounding or refusal to answer.
*For 361 participants who were smokers at baseline.

(1.8%) or NC (3.0%) ($p < 0.0001$) and fewer African-Americans ($p < 0.0001$) for both comparisons. Furthermore, because the programme targeted English speakers, we missed opportunities to reach still more Latinos. At baseline, fewer Texas participants were smokers (71.3%) compared with Atlanta (79.7%, $p = 0.007$), and fewer had children under 18 years in the household compared with the other sites ($p < 0.0001$ for both comparisons); many more Texas participants lived in households with a single smoker (76.4%) than Atlanta (50.0%) or NC (48.0%) ($p < 0.0001$ for both comparisons). Texas participants were similar in median age and proportions of participants who

were women, single, had high school/GED or less education, very low income and partial or no bans at baseline (all comparisons= $p > 0.05$, data not shown).

The Texas Gulf Coast, NC and Atlanta 2-1-1 call centres all offer 24/7/365 coverage and services in multiple languages, although the Texas 2-1-1 call centre volume of 2500 calls/day is substantially larger than the other two (table 1). As noted in the 'Introduction' section, smoking prevalence in the Gulf Coast (based on 2010 BRFSS data) is 1–2 percentage points lower than Atlanta and 5–6 points lower than NC (table 1).

Table 3 Impact of the intervention on primary and secondary outcomes

	3-month assessment			6-month assessment			Intent-to-treat analysis intervention group change*	
	Intervention (n=174), no. (%) or mean±SD	Control (n=193), no. (%) or mean±SD	p Value	Intervention (n=159), no. (%) or mean±SD	Control (n=177), no. (%) or mean±SD	p Value	Effect†	p Value
<i>Primary outcome</i>								
<i>Home smoking ban</i>								
Full ban	81 (46.6)	49 (25.4)	<0.0001‡	100 (62.9)	68 (38.4)	<0.0001‡	1.48‡	<0.0001‡
No full ban	93 (53.4)	144 (74.6)		59 (37.1)	109 (61.6)			
Partial ban	58 (33.3)	89 (46.1)	0.0001§	39 (24.5)	59 (33.3)	<0.0001§	1.61§	<0.001§
No ban	35 (20.1)	55 (28.5)		20 (12.6)	50 (28.3)			
<i>Secondary outcomes—baseline smokers only</i>								
Smokers	(n=113)	(n=127)		(n=96)	(n=107)			
No. of cigs/day	7.6±8.1	10.0±8.2	0.03	7.5±8.1	9.1±6.8	0.13	0.30	0.04
Quit attempts past 3 months	1.6±1.9	1.3±1.4	0.20	1.1±1.4	1.0±1.5	0.65	0.42	0.78
Confidence in quitting	7.0±2.8	6.5±2.5	0.16	7.0±2.9	6.4±2.4	0.09	0.11	0.08

*Intent-to-treat analyses are growth models that include data from all participants including those who were not reached for 3 and/or 6 months follow-up.

†Effect for full and partial ban is an OR; quit attempt is an event rate ratio and β for the other outcomes.

‡Binary comparison: full versus no full ban.

§Ordinal comparison: full versus partial versus no ban.

Compared with findings from Atlanta and NC (6-month ITT ORs=1.56 and 1.72, respectively), the Texas OR of 2.19 indicated greater success at creating full bans. Two considerations, however, lead us to conclude that the trial results are comparable. First, Atlanta results were likely influenced by the threat of being asked to place a nicotine monitor in the home, that is, a ‘bogus pipeline’ effect.⁶³ (Comparison of the monitor results and self-report in Atlanta did not differ statistically, but neither the NC nor Texas trials used monitors and, thus, did not convey the ‘threat’ of verification.) Second, compared with NC, the predominance of single-smoker households and fewer non-Latino white smokers in Texas likely favoured a larger effect.

We approached more than twice as many callers as did Atlanta or NC to reach the enrolment target. Fewer of Texas Gulf Coast callers reported a smoker, and among those callers, more (by almost twice) said that they were not interested and discontinued screening (table 4). We explored the possibility that the Houston Housing Authority smoke-free ordinance affected willingness to respond to the household smoker question, but few who refused (1.34%) resided in public housing.

DISCUSSION

This successful replication provides clear external validity of the Atlanta trial as well as the NC trial, a result rarely attempted or achieved. The three trials demonstrate that, in the context of subtle systematic differences in methods, and subtle difference in settings and populations/samples, and differences in time, we could still attain essentially the same results. Five dissemination field tests currently in progress will provide the capstone evidence of feasibility when recruitment and counselling services are provided by independent service delivery 211 teams across the USA.

The programme’s low intensity is unique compared to virtually all prior interventions that have featured multiple or more intensive counselling sessions and is unusual in including households without children.^{18 19 23–27 64 65} Our goal of reduced exposure rather than cessation alone is, however, aligned with most previously tested interventions.^{19 23–27 64 65}

Failure to detect comparable impact of evidence-based interventions delivered in new settings can often be traced to problems with inadequate implementation, fidelity and level of implementation.⁵⁴ Further, most interventions are adapted in some way during implementation in new settings/populations. This was not the case in the Texas and NC replications, which maintained strong initial and ongoing implementation support for this relatively simple programme. Delivery of the intervention materials by mail in all three trials was nearly 100%, assisted by the address checker in the tracking tool. On the other hand, Texas delivered fewer coaching calls (72% vs 92% and 81% in Atlanta and NC, respectively), in part because an estimated 30% of telephone numbers were out of service only 2 weeks after the baseline interview.

Table 4 Three-site comparison of eligibility and consent rates, coaching call delivery and follow-up

	Texas No. (%)	NC No. (%)	Atlanta No. (%)
Approached	9953	3422	–
Answered question re: smoker in the household	9078 (91.2)*	3236 (94.6)	4175
≥1 smoker in household	1580 (17.4)†	949 (29.3)	1202 (28.8)
Not interested in the programme/study	498 (31.5)‡	149 (15.7)	212 (17.6)
Call dropped	157 (9.9)‡	20 (2.1)	17 (1.4)
Ineligible—other	300 (19.0)‡	188 (19.8)	351 (29.2)
Met all eligibility criteria	625 (39.6)‡	592 (62.4)	622 (51.7)
Consented and enrolled	508 (81.2)§	500 (84.5)	498 (80.1)
Coaching call	186 (72.1)‡	211 (81.2)	227 (92.3)
3-month follow-up	367 (72.2)‡	412 (82.4)	414 (83.1)
6-month follow-up	336 (66.1)‡	380 (76.0)	394 (79.1)

*Number of approached.

†Number of participants who answered question re: smoker in the household.

‡Number of ≥1 smoker in the household.

§Number of participants who met all criteria.

#Number of consented and enrolled.

Lessons about recruitment efficiency and reach

The most effective implementation and sustainability strategies are ones that can be easily modified to adapt to new contexts and changing environments. This view is consistent with the perspective of continuous quality improvement and recognises that to enhance sustainability, implementation approaches should be flexible.⁵⁴ Our trial suggests the need for adaptive changes in recruitment. Further work on the timing and wording of the household smoking question might increase response rates and disclosure, for example, creating a multiple choice question rather than asking a simple 'yes/'no' question.^{66 67} Disclosure may be especially important, although our data did not permit us to say how much low reports of household smokers resulted from regional smoking prevalence versus reluctance to disclose.

To improve efficiency in areas with lower smoking prevalence, we suggest combining screening and recruitment for this programme with other programmes, building on the portfolio of specialised programmes common among 2-1-1 systems, for example, among veterans.³⁰ Further, new recruitment options are presented as more clients access 2-1-1 services through the internet. It is not clear whether callers who expressed disinterest were reacting to the research study in general or to this programme in particular and whether the programme was perceived as requiring cessation. Assurance during recruitment that the goal is not cessation might reduce resistance. Information about monetary incentives will be available from the dissemination field tests.

Extension to new populations

Exploratory results for English-speaking/bilingual Latinos suggest that the programme had an initial effect in this more highly acculturated Latino group. A possible measurement effect in the control group also merits consideration. Adaptation of materials and messages to address different barriers, contextual issues and cultural considerations would potentially strengthen the effect, together with translation for Spanish-speakers and bilingual, multigenerational households.⁶⁸ Adaptation for American Indians/Alaska Native families is underway (Kegler MC, 4 February 2016), and an adapted version of the intervention for use in China showed promising results.⁶⁹

CONCLUSIONS

Programmes that target home SHSe may serve as a 'Trojan horse' to change tobacco culture.²⁵ Following the demonstrations of utility in these three trials, it may be possible to link such programmes to advances in public policies that support them and to add formal regulatory practices, as now proposed, banning smoking in federally subsidised housing.⁷⁰ Future analyses should be directed towards assessing these complex and interacting contingencies.

The robust effect demonstrated in our trial, even with conservative sensitivity analyses, illustrates the importance of programme design and testing, beginning with the strategic choice of provider, with the staffing and structure needed for programme delivery and with wide reach to the intended beneficiaries. This multisite series also meets the suggested criterion of three replications⁵¹ and underscores the careful step-down of trial elements and monitoring that will be tested further in the dissemination phase. In contrast to single-shot, highly controlled efficacy trials, this initiative provides essential elements for attaining a sustainable public health impact.

What this paper adds

- ▶ A unique, minimal intervention to promote home smoking bans in low-income households was successful in efficacy (Atlanta) and effectiveness (North Carolina) trials. Replication of interventions is reported infrequently, despite concerns about the failure to replicate findings from individual trials.
- ▶ Full implementation throughout a national delivery system with broad reach to households without bans requires further testing to provide robust evidence of effectiveness.
- ▶ This trial (Texas) was in a more diverse population and different smoking context, substantiated the programme's effectiveness and generalisability and identified areas for adaptive changes to increase reach.

Acknowledgements The authors thank 2-1-1 Texas United Way of Greater Houston for their continued efforts to make this study a success. They specifically thank David Smith, Vallery Arnold, Amy Ricalday, Gema Hernandez, Frances Potakey, Teresa Barragan, Debbie Washington, Tyreece Ceaser, John Danny Davidson and Lena Estrada. They also thank University of Texas School of Public Health graduate assistants Sara Fares, Victoria Gbenjo and Amy Wiczorek for conducting follow-up interviews. The authors are grateful to Dr Paul R. Swank for advice on data reporting and to four anonymous reviewers for their valuable comments.

Contributors PDM directed the trial as the principal investigator, drafted the article and adjudicated input from coauthors. LSS assisted with trial direction as the coprincipal investigator, wrote parts of the article and made major edits. LTB assisted with the design of the study, codeveloped the intervention, assisted with quality control of intervention delivery and data collection and made edits on the full article. RH assisted with the study design, completed all data analysis and made major contributions in writing and editing the results. MH assisted with study design and development of measures and wrote parts of the introduction and discussion. MEF established the relationship with 2-1-1 Texas/United Way HELPLINE, wrote parts of the introduction and discussion and reviewed the full article. JAAM managed day-to-day study activities, including tracking and quality control of data collection and intervention delivery, and contributed to the draft of the article. RSW advised on study design and measures, managed the design of the web-based tracking tool and edited the full article. MWK assisted in conceptualising the study, established the 2-1-1 partnership nationally, assisted in the development of measures and reviewed the full article. DJ managed the 2-1-1 Texas/United Way HELPLINE, United Way of Greater Houston, Houston, TX partnership, made edits to the methods section and reviewed the final article. MCK is the principal investigator of the Smoke-Free Homes study, conceptualised and directed the overall study, assisted in developing measures, wrote parts of the introduction and made major edits on the full article.

Funding This publication was supported by the National Cancer Institute's State and Community Tobacco Control Research Initiative (grant number U01CA154282). This trial is registered with ClinicalTrials.gov number NCT02097914.

Disclaimer The content is solely the responsibility of the authors and does not necessarily represent the official views of the National Cancer Institute or the National Institutes of Health.

Competing interests None declared.

Ethics approval The University of Texas Health Science Center School of Public Health Institutional Review Board approved this protocol (#13-0902).

Provenance and peer review Not commissioned; externally peer reviewed.

Open Access This is an Open Access article distributed in accordance with the Creative Commons Attribution Non Commercial (CC BY-NC 4.0) license, which permits others to distribute, remix, adapt, build upon this work non-commercially, and license their derivative works on different terms, provided the original work is properly cited and the use is non-commercial. See: <http://creativecommons.org/licenses/by-nc/4.0/>

REFERENCES

- 1 Centers for Disease Control and Prevention (CDC). Vital signs: nonsmokers' exposure to secondhand smoke—United States, 1999–2008. *MMWR Morb Mortal Wkly Rep* 2010;59:1141–6.

- 2 Homa DM, Neff LJ, King BA, *et al*. Vital signs: disparities in nonsmokers' exposure to secondhand smoke—United States, 1999–2012. *MMWR Morb Mortal Wkly Rep* 2015;64:103–8.
- 3 Mills AL, White MM, Pierce JP, *et al*. Home smoking bans among US households with children and smokers. Opportunities for intervention. *Am J Prev Med* 2011;41:559–65.
- 4 Norman GJ, Ribisl KM, Howard-Pitney B, *et al*. Smoking bans in the home and car: do those who really need them have them? *Prev Med* 1999;29:581–9.
- 5 Kegler MC, Malcoe LH. Smoking restrictions in the home and car among rural Native American and white families with young children. *Prev Med* 2002;35:334–42.
- 6 King BA, Dube SR, Homa DM. Smoke-free rules and secondhand smoke exposure in homes and vehicles among US adults, 2009–2010. *Prev Chronic Dis* 2013;10:E79.
- 7 US Department of Health and Human Services. *The health consequences of smoking—50 years of progress: a report of the surgeon general*. Washington, DC: Office of the Surgeon General, 2014.
- 8 Oberg M, Jaakkola MS, Woodward A, *et al*. Worldwide burden of disease from exposure to second-hand smoke: a retrospective analysis of data from 192 countries. *Lancet* 2011;377:139–46.
- 9 Pirkle JL, Bernert JT, Caudill SP, *et al*. Trends in the exposure of nonsmokers in the US population to secondhand smoke: 1988–2002. *Environ Health Perspect* 2006;114:853–8.
- 10 Centers for Disease Control and Prevention (CDC). Disparities in secondhand smoke exposure—United States, 1988–1994 and 1999–2004. *MMWR Morb Mortal Wkly Rep* 2008;57:744–7.
- 11 International Agency for Research on Cancer. Evaluating the effectiveness of smoke-free policies. In: *Handbooks of cancer prevention, tobacco control*. Lyon, France: World Health Organization, 2009:9–58.
- 12 Pizacani BA, Martin DP, Stark MJ, *et al*. Household smoking bans: which households have them and do they work? *Prev Med* 2003;36:99–107.
- 13 Hyland A, Higbee C, Travers MJ, *et al*. Smoke-free homes and smoking cessation and relapse in a longitudinal population of adults. *Nicotine Tob Res* 2009;11:614–18.
- 14 Messer K, Mills AL, White MM, *et al*. The effect of smoke-free homes on smoking behavior in the US. *Am J Prev Med* 2008;35:210–6.
- 15 Forster JL, Widome R, Bernat DH. Policy interventions and surveillance as strategies to prevent tobacco use in adolescents and young adults. *Am J Prev Med* 2007;33(6 Suppl):S335–9.
- 16 Biener L, Nyman AL. Effect of workplace smoking policies on smoking cessation: results of a longitudinal study. *J Occup Environ Med* 1999;41:1121–7.
- 17 Pizacani BA, Martin DP, Stark MJ, *et al*. A prospective study of household smoking bans and subsequent cessation related behaviour: the role of stage of change. *Tob Control* 2004;13:23–8.
- 18 Hopkins DP, Briss PA, Ricard CJ, *et al*. Reviews of evidence regarding interventions to reduce tobacco use and exposure to environmental tobacco smoke. *Am J Prev Med* 2001;20(2 Suppl):16–66.
- 19 Hovell MF, Zakarian JM, Matt GE, *et al*. Effect of counselling mothers on their children's exposure to environmental tobacco smoke: randomised controlled trial. *BMJ* 2000;321:337–42.
- 20 Hovell MF, Meltzer SB, Wahlgren DR, *et al*. Asthma management and environmental tobacco smoke exposure reduction in Latino children: a controlled trial. *Pediatrics* 2002;110:946–56.
- 21 Hovell MF, Zakarian JM, Matt GE, *et al*. Counseling to reduce children's secondhand smoke exposure and help parents quit smoking: a controlled trial. *Nicotine Tob Res* 2009;11:1383–94.
- 22 Gehrman CA, Hovell MF. Protecting children from environmental tobacco smoke (ETS) exposure: a critical review. *Nicotine Tob Res* 2003;5:289–301.
- 23 Rosen LJ, Noah MB, Winickoff JP, *et al*. Parental smoking cessation to protect young children: a systematic review and meta-analysis. *Pediatrics* 2012;129:141–52.
- 24 Tyc VL, Huang Q, Nicholson J, *et al*. Intervention to reduce secondhand smoke exposure among children with cancer: a controlled trial. *Psychooncology* 2013;22:1104–11.
- 25 Hovell MF, Hughes SC. The behavioral ecology of secondhand smoke exposure: a pathway to complete tobacco control. *Nicotine Tob Res* 2009;11:1254–64.
- 26 Stotts AL, Green C, Northrup TF, *et al*. Feasibility and efficacy of an intervention to reduce secondhand smoke exposure among infants discharged from a neonatal intensive care unit. *J Perinatol* 2013;33:811–6.
- 27 Rosen LJ, Myers V, Winickoff JP, *et al*. Effectiveness of interventions to reduce tobacco smoke pollution in homes: a systematic review and meta-analysis. *Int J Environ Res Public Health* 2015;12:16043–59.
- 28 United Way Worldwide and Alliance for Information and Referral Systems. <http://www.211us.org/index.htm> (accessed 14 Jan 2016).
- 29 Purnell JQ, Kreuter MW, Eddens KS, *et al*. Cancer control needs of 2-1-1 callers in Missouri, North Carolina, Texas, and Washington. *J Health Care Poor Underserved* 2012;23:752–67.
- 30 Kreuter MW. Reach, effectiveness, and connections: the case for partnering with 2-1-1 to eliminate health disparities. *Am J Prev Med* 2012;43(Suppl 5):S420–1.
- 31 Kreuter MW, Eddens KS, Alcaraz KI, *et al*. Use of cancer control referrals by 2-1-1 callers: a randomized trial. *Am J Prev Med* 2012;43(Suppl 5):S425–34.
- 32 Kegler MC, Bundy L, Haardorfer R, *et al*. A minimal intervention to promote smoke-free homes among 2-1-1 callers: a randomized controlled trial. *Am J Public Health* 2015;105:530–7.
- 33 Escoffery C, Kegler MC, Butler S. Formative research on creating smoke-free homes in rural communities. *Health Educ Res* 2009;24:76–86.
- 34 Kegler MC, Escoffery C, Groff A, *et al*. A qualitative study of how families decide to adopt household smoking restrictions. *Fam Community Health* 2007;30:328–41.
- 35 Kegler MC, Escoffery C, Bundy L, *et al*. Pilot study results from a brief intervention to create smoke-free homes. *J Environ Public Health* 2012;2012:951426.
- 36 Kok G, Gottlieb NH, Peters GY, *et al*. A taxonomy of behaviour change methods: an Intervention Mapping approach. *Health Psychol Rev* 2015;10:297–312.
- 37 Bartholomew Eldredge L, Markham C, Ruitter R, *et al*. *Planning health promotion programs: an intervention mapping approach*. San Francisco, CA: Jossey-Bass, 2016.
- 38 Bandura A. *Social foundations of thought and action a social cognitive theory*. Englewood Cliffs, NJ: Prentice-Hall, 1986.
- 39 Prochaska JO, DiClemente CC. Transtheoretical therapy: toward a more integrative model of change. *Psychotherapy* 1982;19:276–88.
- 40 Glasgow RE. What does it mean to be pragmatic? Pragmatic methods, measures, and models to facilitate research translation. *Health Educ Behav* 2013;40:257–65.
- 41 Factors Report for by County. <http://statecancerprofiles.cancer.gov/risk/index.php?topic=smoke&risk=v19&race=00&sex=0&datatype=1&stateFIPS=13&type=risk&sortVariableName=default&sortOrder=default#results> (accessed 3 Mar 2016).
- 42 Centers for Disease Control and Prevention. Tobacco Control State Highlights 2012. http://www.cdc.gov/tobacco/data_statistics/state_data/state_highlights/2012/pdfs/states/north_carolina.pdf (accessed 3 Mar 2016). State Cancer Profiles. Screening and Risk.
- 43 Williams RS, Stollings JH, Bundy L, *et al*. A Minimal Intervention to Promote Smoke-Free Homes Among 2-1-1 Callers: North Carolina Randomized Effectiveness Trial. *PLoS One* 2016; In press.
- 44 Texas Department of Health and Human Services. Texas Behavioral Risk Factor Surveillance System Survey Data. 2010. https://www.dshs.state.tx.us/chs/brfss/query/brfss_form.shtm (accessed 7 Mar 2016).
- 45 Haines A, Kuruville S, Borchert M. Bridging the implementation gap between knowledge and action for health. *Bull World Health Organ* 2004;82:724–31.
- 46 Glasgow RE, Lichtenstein E, Marcus AC. Why don't we see more translation of health promotion research to practice? Rethinking the efficacy-to-effectiveness transition. *Am J Public Health* 2003;93:1261–7.
- 47 Glasgow RE, Green LW, Klesges LM, *et al*. External validity: we need to do more. *Ann Behav Med* 2006;31:105–8.
- 48 Green LW, Glasgow RE. Evaluating the relevance, generalization, and applicability of research: issues in external validation and translation methodology. *Eval Health Prof* 2006;29:126–53.
- 49 Camerer CF, Dreber A, Forsell E, *et al*. Evaluating replicability of laboratory experiments in economics. *Science* 2016;351:918.
- 50 Gilbert DT, King G, Pettigrew S, *et al*. Comment on "Estimating the reproducibility of psychological science". *Science* 2016;351:1037.
- 51 Moonesinghe R, Khoury MJ, Janssens AC. Most published research findings are false-but a little replication goes a long way. *PLoS Med* 2007;4:e28.
- 52 Mercer SL, DeVinney BJ, Fine LJ, *et al*. Study designs for effectiveness and translation research: identifying trade-offs. *Am J Prev Med* 2007;33:139–54.
- 53 Gartlehner G, Hansen RA, Nissman D, *et al*. *Criteria for distinguishing effectiveness from efficacy trials in systematic reviews*. Agency for Healthcare Research and Quality, 2006:1–19.
- 54 Chambers DA, Glasgow RE, Stange KC. The dynamic sustainability framework: addressing the paradox of sustainment amid ongoing change. *Implement Sci* 2013;8:117.
- 55 SmartyStreets. 2016. <https://smartystreets.com/> (accessed 28 Feb 2016).
- 56 Lairson DR, Huo J, Ricks KA, *et al*. The cost of implementing a 2-1-1 call center-based cancer control navigator program. *Eval Program Plann* 2013;39:51–6.
- 57 Hall KL, Stipelman BA, Eddens KS, *et al*. Advancing collaborative research with 2-1-1 to reduce health disparities: challenges, opportunities, and recommendations. *Am J Prev Med* 2012;43(Suppl 5):S518–28.
- 58 Savas LS, Fernandez ME, Jobe D, *et al*. Human papillomavirus vaccine: 2-1-1 helplines and minority parent decision-making. *Am J Prev Med* 2012;43(Suppl 5):S490–6.
- 59 Centers for Disease Control and Prevention. 2008 Behavioral Risk Factor Surveillance System Questionnaire. 2007. http://www.cdc.gov/brfss/annual_data/pdf-ques/2008brfss.pdf (accessed 15 Jan 2016).
- 60 Biener L, Abrams DB. The Contemplation Ladder: validation of a measure of readiness to consider smoking cessation. *Health Psychol* 1991;10:360–5.
- 61 Singer JD, Willett JB. *Applied longitudinal data analysis modeling change and event occurrence*. Oxford: Oxford University Press, 2003.

- 62 Agresti A. *An introduction to categorical data analysis*. 2nd edn. Hoboken, NJ: Wiley-Interscience, 2007:104–5.
- 63 Jones EE, Sigall H. The bogus pipeline: a new paradigm for measuring affect and attitude. *Psychol Bull* 1971;76:349–64.
- 64 Winickoff JP, Hillis VJ, Palfrey JS, *et al*. A smoking cessation intervention for parents of children who are hospitalized for respiratory illness: the stop tobacco outreach program. *Pediatrics* 2003;111:140–5.
- 65 Emmons KM, Hammond SK, Fava JL, *et al*. A randomized trial to reduce passive smoke exposure in low-income households with young children. *Pediatrics* 2001;108:18–24.
- 66 Mullen PD, Carbonari JP, Tabak ER, *et al*. Improving disclosure of smoking by pregnant women. *Am J Obstet Gynecol* 1991;165:409–13.
- 67 Mullen PD, Carbonari JP, Glenday MC. Identifying pregnant women who drink alcoholic beverages. *Am J Obstet Gynecol* 1991;165(Pt 1):1429–30.
- 68 Savas LS, Mullen PD, Hovell, M., *et al*. Formative research for a Smoke-Free Homes (SFH) intervention for Hispanic Texan Households. *Poster presentation, Innovations in Cancer Prevention and Research Conference*; Austin, TX, 9–10 November 2015.
- 69 Wang J, Zhu S, Wong S, *et al*. Brief intervention to implement home bans on smoking: evaluating the findings from a randomised trial. *Poster presentation, World Conference on Tobacco or Health*. Abu Dhabi, United Arab Emirates, 17–21 March, 2015.
- 70 Regulations.gov. FR 5597-P-02 Instituting Smoke-Free Public Housing. 2016. <http://www.regulations.gov/#!docketDetail;D=HUD-2015-0101> (accessed 7 Mar 2016).