

Stochastic Weighted Graphs: Flexible Model Specification and Simulation*

James D. Wilson, Matthew J. Denny, Shankar Bhamidi,
Skyler Cranmer, and Bruce Desmarais[†]

November 10, 2016

Abstract

In most domains of network analysis researchers consider networks that arise in nature with weighted edges. Such networks are routinely dichotomized in the interest of using available methods for statistical inference with networks. The generalized exponential random graph model (GERGM) is a recently proposed method used to simulate and model the edges of a weighted graph. The GERGM specifies a joint distribution for an exponential family of graphs with continuous-valued edge weights. However, current estimation algorithms for the GERGM only allow inference on a restricted family of model specifications. To address this issue, we develop a Metropolis–Hastings method that can be used to estimate any GERGM specification, thereby significantly extending the family of weighted graphs that can be modeled with the GERGM. We show that new flexible model specifications are capable of avoiding likelihood degeneracy and efficiently capturing network structure in applications where such models were not previously available. We demonstrate the utility of this new class of GERGMs through application to two real network data sets, and we further assess the effectiveness of our proposed methodology by simulating non-degenerate model specifications from the well-studied two-stars model. A working R version of the GERGM code is available in the supplement and will be incorporated in the *gergm* CRAN package.

Keywords: Exponential Random Graph, Generalized Exponential Random Graph, Markov Chain Monte Carlo, Metropolis–Hastings

*The authors gratefully acknowledge the National Science Foundation and NSF grants DMS-1105581, DMS-1310002, SES-1357622, SES-1357606, SES-1461493, and CISE-1320219.

[†]James D. Wilson is an Assistant Professor in the Department of Mathematics and Statistics at the University of San Francisco (jdwilson4@usfca.edu). Matthew Denny is a Ph.D. Candidate in the Department of Political Science and Social Data Analytics at Pennsylvania State University (mdenny@psu.edu). Shankar Bhamidi is an Assistant Professor in the Department of Statistics and Operations Research at the University of North Carolina (bhamidi@email.unc.edu). Skyler Cranmer is the Carter Phillips and Sue Henry Associate Professor in the Department of Political Science at the Ohio State University (cranmer.12@osu.edu). Bruce Desmarais is an Associate Professor in the Department of Political Science at Pennsylvania State University (bbd5087@psu.edu).

1 Introduction

Throughout the sciences, but particularly in the social sciences, a fundamental tool for the statistical analysis of networks has been the exponential random graph model (ERGM) - a popular, powerful, and flexible tool for statistical inference with network data (Holland and Leinhardt, 1981; Wasserman and Pattison, 1996; Snijders et al., 2006). Despite their popularity, conventionally used ERGMs have the major limitation that they require the edges of an observed network be binary (representing the presence or absence of an edge). Thus ERGMs cannot directly model weighted networks. Since many substantively important networks are weighted, this restriction is especially problematic. Weighted networks arise, for example, in the study of financial exchange (Iori et al., 2008), migration patterns (Chun, 2008), and in the analysis of brain functionality and connectivity (Simpson et al., 2011). Recently, some progress on modeling weighted networks in the ERGM framework was made in Desmarais and Cranmer (2012), where the generalized exponential random graph model (GERGM) was proposed to study networks with continuous-valued edges. Around the same time, Krivitsky (2012) proposed the weighted exponential random graph model that generalized the ERGM to networks with integer-valued edges. Robins et al. (1999) developed logistic dyad-independent models for networks with integer-valued edges. Though each of these models provide a means to analyze weighted networks, we will focus on extensions to the GERGM.

In general, the likelihood function of an ERGM is intractable (though some recent progress has been made in the large network $n \rightarrow \infty$ limit (Chatterjee et al., 2013; Lubetzky and Zhao, 2014)); however, efficient estimation can be achieved through the use of Markov Chain Monte Carlo (MCMC) algorithms (Geyer and Thompson, 1992; Hunter and Handcock, 2006). MCMC can be used to simulate samples of networks from which the likelihood function of an ERGM can be approximated. Like the ERGM, estimation of the GERGM is readily achieved via MCMC algorithms. Desmarais and Cranmer (2012) proposed a Gibbs sampling technique for GERGM estimation; however, this strategy limits the specification of network dependencies captured by the GERGM to those for which full conditional edge distributions can be derived in closed form. Another important obstacle that arises in discrete exponential family model specification is the problem of degeneracy, a condition under

which only a few network configurations - usually very sparse and very dense networks - have high probability mass (Handcock et al., 2003; Rinaldo et al., 2009; Schweinberger, 2011). The issue of degeneracy strongly influences the effectiveness of an MCMC algorithm. Indeed, in the case that nearly empty (or nearly complete) networks are most probable, estimation via MCMC will fail to converge to consistent parameter estimates.

Here, we expand the family of weighted networks that can be analyzed under the GERGM by developing a Metropolis–Hastings sampling procedure that allows the flexible specification of network statistics and models under the GERGM framework. Perhaps the greatest drawback of the limited set of models for which Gibbs Sampling can be used to simulate networks is that they are prone to degeneracy. This is due to the fact that the closed-form derivation of the conditional distribution of an edge requires that the network statistics used to specify the GERGM depend linearly on the value of each edge. GERGM specifications that include nonlinear statistics are often required to avoid degeneracy. A significant advantage of our proposed Metropolis–Hastings (MH) procedure is that one can use MH sampling to estimate models that involve nonlinear network statistics. The expanded set of GERGM specifications made available with the use of MH can be used to find a non-degenerate model specification. Furthermore, in models where the Gibbs sampler can be used, Metropolis–Hastings yields the same parameter estimates as those obtained via Gibbs. The framework established here provides an important step in flexibly modeling and simulating weighted networks while further providing a means of avoiding model degeneracy.

In Section 2, we describe the generalized exponential random graph model for graphs with continuous-valued edges. In Section 3, we discuss the Monte Carlo maximum likelihood estimation of the GERGM and briefly describe the Gibbs procedure devised in Desmarais and Cranmer (2012). At the end of Section 3, we formulate a flexible Metropolis–Hastings sampling procedure. We propose a class of model specifications in Section 4 that expands the family of GERGMs beyond those permissible under Gibbs sampling. In Section 5, we evaluate the performance and potential utility of our proposed framework through application to the U.S. state-to-state migration network, an international financial exchange network, as well as through a simulation study that revisits the degenerate two-star-model of Handcock et al. (2003). We conclude with a discussion of open problems and future

work in Section 6.

2 The Generalized Exponential Random Graph Model

Consider a directed network defined on a node set $[n] = \{1, 2, \dots, n\}$, where $m = n(n - 1)$ denotes the total number of directed edges between these nodes. Suppose that the weighted relationships between the nodes are represented by a collection of weights $(y_{ij} : i \neq j \in [n]) \in \mathbb{R}^m$. The aim of this section is to describe a specific class of probability models on \mathbb{R}^m as constructed in [Desmarais and Cranmer \(2012\)](#) called GERGMs that incorporates relational structure between the nodes to generate a random vector $Y \in \mathbb{R}^m$. This probability distribution is specified by a joint probability density function (pdf) $f_Y(y, \Theta)$ driven by real-valued parameters Θ .

A GERGM for the observed configuration y has a simple generative process that relies on two distinct steps. First, a joint distribution that captures the structure and interdependence of Y is defined on a restricted network configuration, $X \in [0, 1]^m$. Next, the restricted network X is transformed onto the support of Y through an appropriate transformation function. These two steps are closely related to the widely studied specification of joint distributions via copula functions ([Genest and MacKay, 1986](#)). We now describe the two steps in specifying a GERGM in more detail.

In the first specification step, a function of network summary statistics $\mathbf{h} : [0, 1]^m \rightarrow \mathbb{R}^p$ is formulated to represent the joint features of X . The random vector X is modeled by an exponential family with parameters $\boldsymbol{\theta} \in \mathbb{R}^p$ as follows:

$$f_X(x, \boldsymbol{\theta}) = \frac{\exp(\boldsymbol{\theta}'\mathbf{h}(x))}{\int_{[0,1]^m} \exp(\boldsymbol{\theta}'\mathbf{h}(z)) dz}, \quad x \in [0, 1]^m, \quad (1)$$

where $\boldsymbol{\theta}'$ denotes the transpose of the vector $\boldsymbol{\theta}$. The network specification in model (1) is closely related to the usual specification of exponential random graph models on binary edges with the exception that individual edges are now modeled as having continuous weights taking values between 0 and 1. As dependence relationships can be captured by functions of edges valued on the unit interval, model (1) provides a flexible specification of interdependence. For instance, networks generated by a highly reciprocal process are

likely to exhibit high values of $\sum_{i < j} x_{ij} x_{ji}$, and those for which there is a high variance in the popularity of vertices (e.g., preferential attachment) are likely to exhibit high values of the “two-stars” statistic $\sum_i \sum_{j, k \neq i} x_{ji} x_{ki}$ (Park and Newman, 2004a). We describe several flexible network statistics for modeling interdependence in Section 4. Note that the uniform distribution on $[0, 1]^m$ is a special case of the model above, obtained by setting the parameters $\boldsymbol{\theta} = \mathbf{0}$.

In the second specification step, a one-to-one and coordinate wise monotonically non-decreasing function $T^{-1} : [0, 1]^m \rightarrow \mathbb{R}^m$ is formulated to model the transformation of the restricted network X onto the support of Y . Specifically, for each pair of distinct nodes $i, j \in [n]$, we model $Y_{ij} = T_{ij}^{-1}(X, \boldsymbol{\beta})$ where $\boldsymbol{\beta} \in \mathbb{R}^k$ parameterizes the transformation so as to capture the marginal features of Y . Since T^{-1} is a monotonically non-decreasing, the pdf of Y is given by

$$f_Y(y, \boldsymbol{\theta}, \boldsymbol{\beta}) = \frac{\exp(\boldsymbol{\theta}' \mathbf{h}(T(y, \boldsymbol{\beta})))}{\int_{[0,1]^m} \exp(\boldsymbol{\theta}' \mathbf{h}(z)) dz} \prod_{ij} t_{ij}(y, \boldsymbol{\beta}), \quad y \in \mathbb{R}^m \quad (2)$$

where $t_{ij}(y, \boldsymbol{\beta}) = dT_{ij}^{-1}(y, \boldsymbol{\beta})/dy_{ij}$. Though the choice of T^{-1} is flexible, specifying T^{-1} so that T_{ij}^{-1} is an inverse cumulative distribution function (cdf) is advisable because the properties of (2) are difficult to understand without this restriction and because it leads to several beneficial properties. First, when T^{-1} is an inverse cdf, t_{ij} is precisely a marginal pdf for all $i \neq j$. Second, when $\boldsymbol{\theta} = \mathbf{0}$, then $f_Y(y, \boldsymbol{\theta}, \boldsymbol{\beta})$ reduces to a product of marginal pdfs $\{t_{ij}\}$ and thus in this special case one obtains a model with dyadic independence across edge weight distributions. An important example includes taking T^{-1} as the inverse of a Gaussian cdf with constant variance. In this special case, if $\boldsymbol{\theta} = \mathbf{0}$ then (2) reduces to a model for conditionally independent Gaussian observations, such as ordinary least squares regression.

3 Model Inference

The GERGM specification in equations (1) and (2) can be used to readily model a wide range of network interdependencies in weighted networks. In this section, we describe maximum likelihood inference of the parameters $\boldsymbol{\theta}$ and $\boldsymbol{\beta}$ via MCMC. We review the Gibbs

sampling procedure in [Desmarais and Cranmer \(2012\)](#), which relies on an important restriction of model specification. We then develop a general inferential framework for sampling via Metropolis–Hastings, which extends the family of GERGM specifications. We provide pseudo-code for the MCMC maximum likelihood estimation procedure described in Sections 3.1 - 3.4 in the Appendix.

3.1 Maximum Likelihood Inference

Given a specification of statistics $\mathbf{h}(\cdot)$, transformation function T^{-1} , and observations $Y = y$ from the distribution (2), our goal is to find the maximum likelihood estimates (MLEs) of the unknown parameters $\boldsymbol{\theta}$ and $\boldsymbol{\beta}$, namely to find values $\hat{\boldsymbol{\theta}}$ and $\hat{\boldsymbol{\beta}}$ that maximize the log likelihood:

$$\ell(\boldsymbol{\theta}, \boldsymbol{\beta} | y) = \boldsymbol{\theta}'\mathbf{h}(T(y, \boldsymbol{\beta})) - \log C(\boldsymbol{\theta}) + \sum_{ij} \log t_{ij}(y, \boldsymbol{\beta}), \quad (3)$$

where

$$C(\boldsymbol{\theta}) = \int_{[0,1]^m} \exp(\boldsymbol{\theta}'\mathbf{h}(z)) dz.$$

The maximization of (3) can be achieved through alternate maximization of $\boldsymbol{\beta} | \boldsymbol{\theta}$ and $\boldsymbol{\theta} | \boldsymbol{\beta}$. In particular, one can calculate the MLEs $\hat{\boldsymbol{\theta}}$ and $\hat{\boldsymbol{\beta}}$ by iterating between the following two steps until convergence.

For $r \geq 1$, iterate until convergence:

1. Given $\boldsymbol{\theta}^{(r)}$, estimate $\boldsymbol{\beta}^{(r)} | \boldsymbol{\theta}^{(r)}$:

$$\boldsymbol{\beta}^{(r)} = \operatorname{argmax}_{\boldsymbol{\beta}} \left(\boldsymbol{\theta}^{(r)'}\mathbf{h}(T(y, \boldsymbol{\beta})) + \sum_{ij} \log t_{ij}(y, \boldsymbol{\beta}) \right). \quad (4)$$

2. Set $\hat{x} = T(y, \boldsymbol{\beta}^{(r)})$. Then estimate $\boldsymbol{\theta}^{(r+1)} | \boldsymbol{\beta}^{(r)}$:

$$\boldsymbol{\theta}^{(r+1)} = \operatorname{argmax}_{\boldsymbol{\theta}} \left(\boldsymbol{\theta}'\mathbf{h}(\hat{x}) - \log C(\boldsymbol{\theta}) \right). \quad (5)$$

For fixed $\boldsymbol{\theta}$, the likelihood maximization in (4) is straightforward and can be accomplished numerically using gradient descent ([Snyman, 2005](#)). In the case that t_{ij} is log-concave and $\mathbf{h} \circ T$ is concave in $\boldsymbol{\beta}$, a hill climbing algorithm is assured to find the global

optimum.

The maximization in (5) is a difficult problem due to the intractability of the normalization factor $C(\boldsymbol{\theta})$. There has been much recent work on circumventing the intractability of $C(\boldsymbol{\theta})$. For example, [Strauss and Ikeda \(1990\)](#) consider using the maximum pseudo-likelihood estimate (MPLE) for $\boldsymbol{\theta}$, which assumes independence of the edges in the graph. [Van Duijn et al. \(2009\)](#) shows, however, that using the MPLE is often biased and far less efficient than the maximum likelihood estimate especially when strong network dependencies are present. In light of the inefficiency of pseudo-likelihood estimates, we turn to MCMC methods for estimating (5) which have witnessed considerable success in estimating exponential family models ([Geyer and Thompson, 1992](#); [Hunter and Handcock, 2006](#)). We describe the MCMC framework for estimating $\boldsymbol{\theta}$ and then review the constrained Gibbs procedure developed in [Desmarais and Cranmer \(2012\)](#) before introducing our new more flexible Metropolis–Hastings procedure.

3.2 Monte Carlo Maximization in the GERGM

Let $\boldsymbol{\theta}$ and $\tilde{\boldsymbol{\theta}}$ be two arbitrary vectors in \mathbb{R}^p and let $C(\cdot)$ be defined as in (3). The crux of optimizing (5) via Monte Carlo simulation relies on the following property of exponential families ([Geyer and Thompson, 1992](#)):

$$\frac{C(\boldsymbol{\theta})}{C(\tilde{\boldsymbol{\theta}})} = \mathbb{E}_{\tilde{\boldsymbol{\theta}}} \left[\exp \left((\boldsymbol{\theta} - \tilde{\boldsymbol{\theta}})' \mathbf{h}(X) \right) \right]. \quad (6)$$

The expectation in (6) is not directly computable; however, a first order approximation to this quantity is given by the first moment estimate:

$$\mathbb{E}_{\tilde{\boldsymbol{\theta}}} \left[\exp \left((\boldsymbol{\theta} - \tilde{\boldsymbol{\theta}})' \mathbf{h}(X) \right) \right] \approx \frac{1}{M} \sum_{j=1}^M \exp \left((\boldsymbol{\theta} - \tilde{\boldsymbol{\theta}})' \mathbf{h}(x^{(j)}) \right), \quad (7)$$

where $x^{(1)}, \dots, x^{(M)}$ is an observed sample from pdf $f_X(\cdot, \tilde{\boldsymbol{\theta}})$.

Define $\ell(\boldsymbol{\theta}|\hat{x}) := \boldsymbol{\theta}'\mathbf{h}(\hat{x}) - \log C(\boldsymbol{\theta})$. Then maximizing $\ell(\boldsymbol{\theta}|\hat{x})$ with respect to $\boldsymbol{\theta} \in \mathbb{R}^p$ is equivalent to maximizing $\ell(\boldsymbol{\theta}|\hat{x}) - \ell(\tilde{\boldsymbol{\theta}}|\hat{x})$ for any fixed arbitrary vector $\tilde{\boldsymbol{\theta}} \in \mathbb{R}^p$. Equations (6)

and (7) suggest:

$$\ell(\boldsymbol{\theta}|\hat{x}) - \ell(\tilde{\boldsymbol{\theta}}|\hat{x}) \approx (\boldsymbol{\theta} - \tilde{\boldsymbol{\theta}})' \mathbf{h}(\hat{x}) - \log \left(\frac{1}{M} \sum_{j=1}^M \exp \left((\boldsymbol{\theta} - \tilde{\boldsymbol{\theta}})' \mathbf{h}(x^{(j)}) \right) \right). \quad (8)$$

An estimate for $\boldsymbol{\theta}$ can now be calculated by the maximization of (8). The $r + 1$ st iteration estimate $\boldsymbol{\theta}^{(r+1)}$ in 5 can be obtained using Monte Carlo methods by iterating between the following two steps:

Given $\boldsymbol{\beta}^{(r)}$, $\boldsymbol{\theta}^{(r)}$, and $\hat{x} = T(y, \boldsymbol{\beta}^{(r)})$

1. Simulate networks $x^{(1)}, \dots, x^{(M)}$ from density $f_X(x, \boldsymbol{\theta}^{(r)})$.
2. Update:

$$\boldsymbol{\theta}^{(r+1)} = \operatorname{argmax}_{\boldsymbol{\theta}} \left(\boldsymbol{\theta}' \mathbf{h}(\hat{x}) - \log \left(\frac{1}{M} \sum_{j=1}^M \exp \left((\boldsymbol{\theta} - \boldsymbol{\theta}^{(r)})' \mathbf{h}(x^{(j)}) \right) \right) \right). \quad (9)$$

Given observations $Y = y$, the Monte Carlo algorithm described above requires an initial estimate $\boldsymbol{\beta}^{(0)}$ and $\boldsymbol{\theta}^{(1)}$. We initialize β_0 using (4) in the case that there are no network dependencies present, namely, $\boldsymbol{\beta}^{(0)} = \operatorname{argmax}_{\boldsymbol{\beta}} \{ \sum_{ij} \log t_{ij}(y, \boldsymbol{\beta}) \}$. We then fix $x_{obs} = T(y, \boldsymbol{\beta}_0)$, and use the Robbins-Monro algorithm for exponential random graph models described in [Snijders \(2002\)](#) to initialize $\boldsymbol{\theta}^{(1)}$. This initialization step can be thought of as the first step of a Newton-Raphson update of the MPLE estimate $\boldsymbol{\theta}_{MPLE}$ on a small sample of networks generated from the density $f_X(x_{obs}, \boldsymbol{\theta}_{MPLE})$.

The first step of the Monte Carlo algorithm requires simulation from the density $f_X(x, \boldsymbol{\theta}^{(r)})$. As this density cannot be directly computed, one must rely on the use of MCMC methods, such as Gibbs or Metropolis–Hastings samplers, for estimation.

3.3 Simulation via Gibbs Sampling

The Gibbs sampling procedure described in [Desmarais and Cranmer \(2012\)](#) provides a straightforward way to estimate $\boldsymbol{\theta}$ through the iterative optimization of (8); however, its use restricts the specification of network statistics $\mathbf{h}(\cdot)$ in the GERGM formulation. In particular, the use of Gibbs sampling requires that the network dependencies in an observed network y are captured through x by first order network statistics, namely statistics $\mathbf{h}(\cdot)$ that are

linear in x_{ij} for all $i, j \in [n]$. With this assumption, one can derive a closed-form conditional distribution of X_{ij} given the remaining network, $X_{-(ij)}$, which is used in Gibbs sampling.

Let $f_{X_{ij}|X_{-(ij)}}(x_{ij}, \boldsymbol{\theta})$ denote the conditional pdf of X_{ij} given the remaining restricted network $X_{-(ij)}$. Consider the following condition on $\mathbf{h}(x)$:

$$\frac{\partial^2 \mathbf{h}(x)}{\partial x_{ij}^2} = \mathbf{0}, \quad i, j \in [n] \quad (10)$$

Assuming that (10) holds, one can readily derive a closed form expression for $f_{X_{ij}|X_{-(ij)}}(x_{ij}, \boldsymbol{\theta})$:

$$f_{X_{ij}|X_{-(ij)}}(x_{ij}, \boldsymbol{\theta}) = \frac{\exp\left(x_{ij} \frac{\boldsymbol{\theta}' \partial \mathbf{h}(x)}{\partial x_{ij}}\right)}{\left(\boldsymbol{\theta}' \frac{\partial \mathbf{h}(x)}{\partial x_{ij}}\right)^{-1} \left[\exp\left(\boldsymbol{\theta}' \frac{\partial \mathbf{h}(x)}{\partial x_{ij}}\right) - 1\right]} \quad (11)$$

Let U be uniform on $(0, 1)$. Using the conditional density in (11), one can simulate values of $x \in \mathbb{R}^m$ iteratively by drawing edge realizations of $X_{ij}|X_{-(ij)}$ according to the following distribution:

$$X_{ij}|X_{-ij} \sim \frac{\log\left[1 + U \left(\exp\left(\boldsymbol{\theta}' \frac{\partial \mathbf{h}(x)}{\partial x_{ij}}\right) - 1\right)\right]}{\boldsymbol{\theta}' \frac{\partial \mathbf{h}(x)}{\partial x_{ij}}}, \quad \boldsymbol{\theta}' \frac{\partial \mathbf{h}(x)}{\partial x_{ij}} \neq 0 \quad (12)$$

When $\boldsymbol{\theta}' \frac{\partial \mathbf{h}(x)}{\partial x_{ij}} = 0$, all values in $[0, 1]$ are equally likely; thus, $X_{ij}|X_{-(ij)}$ is simply drawn uniformly from support $[0, 1]$. The Gibbs simulation procedure simulates network samples $x^{(1)}, \dots, x^{(M)}$ from $f_X(x, \boldsymbol{\theta})$ by sequentially sampling each edge from its conditional distribution given in (12).

Assumption (10) greatly restricts the class of models that can be fit under the GERGM framework. To appropriately fit structural features of a network such as the degree distribution, reciprocity, clustering or assortative mixing, it may be necessary to use network statistics that involve nonlinear functions of the edges. Under Assumption (10), nonlinear functions of edges are not permitted – a limitation that may prevent theoretically or empirically appropriate models of networks in many domains. Furthermore, as we will demonstrate in our numerical study, exponentially weighted network statistics like those in Table 1 can provide a means to flexibly model networks. This is particularly beneficial in cases where a theoretically appropriate non-degenerate model cannot be identified within the restricted class of GERGMs. To incorporate the aforementioned statistics and

extend the class of available GERGMs, we develop a general inferential framework via Metropolis–Hastings that is applicable to any GERGM specification.

3.4 A General Inferential Framework via Metropolis–Hastings

An alternative and more flexible way to sample a collection of networks from the density $f_X(x, \theta)$ is the Metropolis–Hastings procedure. The Metropolis–Hastings procedure that we propose samples the $t + 1$ st network, $x^{(t+1)}$, via a truncated multivariate Gaussian proposal distribution $q(\cdot|x^{(t)})$ whose mean depends on the previous sample $x^{(t)}$ and whose variance is a fixed constant σ^2 .

The truncated Gaussian is a convenient and commonly used proposal distribution for bounded random variables such as those on the $[0, 1]$ interval with which we are working (see, e.g., [Browne \(2006\)](#); [Claeskens et al. \(2010\)](#); [Müller \(2010\)](#); [Neelon et al. \(2014\)](#); [Franks et al. \(2014\)](#)). The advantage of the truncated Gaussian over the obvious alternative for bounded random variables – the Beta distribution – is that it is straightforward to concentrate the density of the truncated Gaussian around any point within the bounded range. For example, a truncated Gaussian with $\mu = 0.75$ and $\sigma = 0.05$ will result in proposals that are nearly symmetric around 0.75 and stay within 0.6 and 0.9. In practice, we found the shape of the Beta distribution to be less amenable to precise concentration around points within the unit interval, which leads to problematic acceptance rates in the Metropolis–Hastings algorithm.

We say that w is a sample from a truncated normal distribution on $[a, b]$ with mean μ and variance σ^2 (written $W \sim \text{TN}_{(a,b)}(\mu, \sigma^2)$) if the pdf of W is given by:

$$g_W(w|\mu, \sigma^2, a, b) = \frac{\sigma^{-1}\phi\left(\frac{w-\mu}{\sigma}\right)}{\Phi\left(\frac{b-\mu}{\sigma}\right) - \Phi\left(\frac{a-\mu}{\sigma}\right)}, \quad a \leq w \leq b$$

where $\phi(\cdot|\mu, \sigma^2)$ is the pdf of a $N(\mu, \sigma^2)$ random variable and $\Phi(\cdot)$ is the cdf of the standard normal random variable. To ease notation, we write the truncated normal density on the unit interval as

$$q_\sigma(w|x) = g_W(w|x, \sigma^2, 0, 1) \tag{13}$$

This will be our proposal density. Denote the weight between node i and j for sample t by $x_{ij}^{(t)}$. The Metropolis–Hastings procedure we employ generates sample $x^{(t+1)}$ sequentially according to an acceptance/rejection algorithm. The $t + 1$ st sample $x^{(t+1)}$ is generated as follows.

1. For $i, j \in [n]$, generate proposal edge $\tilde{x}_{ij}^{(t)} \sim q_\sigma(w|x_{ij}^{(t)})$ independently across edges.
2. Set

$$x^{(t+1)} = \begin{cases} \tilde{x}^{(t)} = (\tilde{x}_{ij}^{(t)})_{i,j \in [n]} & \text{w.p. } \rho(x^{(t)}, \tilde{x}^{(t)}) \\ x^{(t)} & \text{w.p. } 1 - \rho(x^{(t)}, \tilde{x}^{(t)}) \end{cases}$$

where

$$\begin{aligned} \rho(x, y) &= \min \left(\frac{f_X(y|\boldsymbol{\theta})}{f_X(x|\boldsymbol{\theta})} \prod_{i,j \in [n]} \frac{q_\sigma(x_{ij}|y_{ij})}{q_\sigma(y_{ij}|x_{ij})}, 1 \right) \\ &= \min \left(\exp(\boldsymbol{\theta}'(\mathbf{h}(y) - \mathbf{h}(x))) \prod_{i,j \in [n]} \frac{q_\sigma(x_{ij}|y_{ij})}{q_\sigma(y_{ij}|x_{ij})}, 1 \right) \end{aligned} \quad (14)$$

The acceptance probability $\rho(x^{(t)}, \tilde{x}^{(t)})$ can be thought of as a likelihood ratio of the proposed network given the current network $x^{(t)}$ and the current network given the proposal $\tilde{x}^{(t)}$. Large values of $\rho(x^{(t)}, \tilde{x}^{(t)})$ suggest a higher likelihood of the proposal network. It is readily verified that the resulting samples $\{x^{(t)}, t = 1, \dots, M\}$ form a Markov Chain whose stationary distribution is the target pdf $f_X(\cdot|\boldsymbol{\theta})$.

The proposal variance parameter σ^2 influences the average acceptance rate of the Metropolis–Hastings procedure described above. Indeed, the value of σ^2 tends to be inversely related to the average acceptance rate of the algorithm. [Roberts et al. \(1997\)](#) analyzed the efficiency of general random walk Metropolis algorithms and found that an acceptance rate of 0.234 optimized the convergence rate of this class of algorithms. Following their heuristic, we suggest tuning σ^2 so that the average acceptance rate is approximately 0.25.¹

¹We introduce this criterion as a heuristic for MH sampling for GERGM, since the conditions outlined by [Roberts et al. \(1997\)](#) for 0.234 to be optimal do not apply to sampling from GERGM.

The Metropolis–Hastings algorithm requires specification of an initial sample $x^{(1)}$. To this end, we sample $x^{(1)}$ from a collection of independent uniform random variables on the unit interval. We set a sufficient burn-in so that the resulting chain of M samples have converged. To test the convergence of the samples, we use the Geweke diagnostic test for stationarity (Geweke, 1991) on the network statistics associated with the collection of samples. Furthermore, traceplots of the network statistics can be used to readily surveil the convergence of the network samples. We illustrate how to diagnose convergence in the numerical study in the Appendix.

4 Flexible Model Specification

In the context of the dichotomous ERGM, a substantial literature has arisen around how to best formulate network statistics that represent important generative relational processes such as transitivity, balance, and preferential attachment (Wasserman and Pattison, 1996; Park and Newman, 2004b; Snijders et al., 2006; Hunter et al., 2008). The initial development of ERGM specifications focused on local subgraph counts, such as the number of two-stars and triangles, that implied straightforward conditional distributions for each tie given the rest of the network (i.e., Markov graphs (Frank and Strauss, 1986)). Intermediate extensions of the standard suite of network statistics used in ERGM specifications focused on more advanced or higher-order subgraph counts (Pattison and Robins, 2002), reflecting longer paths and clique-like structures among node sets.

Unfortunately, in most cases, these motif-count specifications lead to empirically implausible models due to the problem of degeneracy. Snijders et al. (2006) and Hunter et al. (2008) propose the use of geometrically decreasing weights in the calculation of statistics for transitivity, and for in- and out-degree distributions. The down-weighting in these statistics takes effect as a single node or edge is involved in many subgraph motifs (e.g., the contribution to the transitivity statistic from the first shared partner to two nodes incident to an edge, is more than four times the contribution of the fourth shared partner). These geometrically weighted specifications were shown to avoid degeneracy with much greater success than models specified with simple local subgraph counts. The geometrically weighted shared partners (GWESP) statistics from Snijders et al. (2006) and Hunter et al.

(2008) reduces the weight of high order statistics in an ERGM and reduces the computational complexity of typical subgraph counting. Wyatt et al. (2010) suggest using the geometric mean of subgraphs as the measure of “subgraph intensity” for network statistics.

In the GERGM framework, we specify statistics that correspond to the subgraph configurations that have proven fruitful in specifying binary-valued ERGMs. Though virtually any network statistic can be used in a GERGM specification, we focus on a flexible, two-pronged, weighting scheme that dampens the extremes that arise through summed subgraph products. The geometric mean suggested in Wyatt et al. (2010) can be seen as dampening the change in subgraph sums with respect to subgraph product values by exponentiating the subgraph product to an exponent between 0 and 1. The first prong in our weighted specifications can be considered a generalization of the geometric mean. That is, we suggest exponentiating each sub-graph by exponent ($\alpha \in (0, 1]$) before summing over all subgraphs. We refer to this as α -inside weighting. The second prong in our specifications represents an extension of the triangle model specification in Lubetzky and Zhao (2015). Lubetzky and Zhao (2015) show that raising the triangle density to an exponent greater than zero, but less than $2/3$ leads to an ERGM specification that is asymptotically distinguishable from Erdos-Renyi random graphs, which is not true of the conventionally-specified (i.e., non-exponentiated) ERGM statistics. We refer to the latter prong as the α -outside specification.

Aside from providing different empirical fit, the α -outside model leads to a more complicated pattern of dependence among the ties, with all ties dependent upon each other, to a degree. The α -inside weighting leads to the local dependence common to ERGMs, in which the change statistics (i.e., derivatives of h with respect to edge values in the GERGM) depend upon edges in which an edge is embedded in subgraphs relevant to the statistics. Formally, as long as the statistics being raised to α are sub-graph products, the α -inside weighting leads to a Markov graph (Frank and Strauss, 1986) form of the GERGM, in which the joint density of the constrained (i.e., quantile) graph factorizes to a product over functions of sub-graphs. Frank and Strauss (1986), drawing on the Hammersley-Clifford theorem, discuss how ERGM specifications that factorize by sub-graphs exhibit local dependence in which edges depend only on neighbors within the subgraphs. Since it does not factorize by sub-graphs, the α -outside specification leads to global dependence, in which the change statistics depend upon the local edges as well as the global network statistic val-

ues. This is readily observed by considering the derivative of a statistic weighted according to the α -outside specification with respect to a change in an edge X_{ij} . Let $h_\alpha(X) = h(X)^\alpha$, then

$$\frac{dh_\alpha}{dX_{ij}} = \frac{\alpha}{h^{1-\alpha}} \frac{dh}{dX_{ij}}. \quad (15)$$

We see here that the change statistic with respect to an edge increases with the values of the edges that are local to the edge in a given network statistic (i.e., $\frac{dh}{dX_{ij}}$), but decreases with the global value of the network statistic (i.e., $h^{1-\alpha}$). The decrease with the global value of the statistic is a dampening effect according to which the tendency to form dense motifs lessens with the average/total density of those motifs across the network. We consider these two approaches to dampening the combinatorial growth in network statistic values, and show that each method can be used to avoid degeneracy in GERGM. We note that in principle one can specify any suite of network statistics for a GERGM specification. In this work, we specifically consider α -outside specification using the statistics described in Table 1. In Section 5, we show that our chosen flexible network statistics provide a means to avoid degeneracy in the GERGM and capture relevant network motifs in application.

5 Applications

We assess the performance and utility of our proposed Metropolis–Hastings procedure for the GERGM using real and simulated networks. First, we analyze an application in which the Metropolis–Hastings sampler can be used to fit non-degenerate model specifications in a situation where the Gibbs sampler is not available. For this, in Section 5.1 we analyze an international lending network that contains the aggregate bank lending volume between 17 large industrialized nations in 2005. In Section 5.2 we analyze the U.S. state migration network from 2006 to 2007. In this example, we validate our Metropolis–Hastings procedure by numerically comparing its estimates with those obtained from the Gibbs approach in Desmarais and Cranmer (2012). In Section 5.3 we explore the utility of flexible model specification for a directed variant of the *two-star model* (Handcock et al., 2003). In binary networks, the two-star model is known to be prone to degeneracy given small changes in its parameter values (Park and Newman, 2004c). Our simulation study suggests that

Network Statistic	Parameter	Value
Reciprocity	θ_R	$\left(\sum_{i < j} x_{ij} x_{ji} \right)^{\alpha_R}$
Cyclic Triads	θ_{CT}	$\left(\sum_{i < j < k} (x_{ij} x_{jk} x_{ki} + x_{ik} x_{kj} x_{ji}) \right)^{\alpha_{CT}}$
In-Two-Stars	θ_{ITS}	$\left(\sum_i \sum_{j < k \neq i} x_{ji} x_{ki} \right)^{\alpha_{ITS}}$
Out-Two-Stars	θ_{OTS}	$\left(\sum_i \sum_{j < k \neq i} x_{ij} x_{ik} \right)^{\alpha_{OTS}}$
Edge Density	θ_E	$\left(\sum_{i \neq j} x_{ij} \right)^{\alpha_E}$
Transitive Triads	θ_{TT}	$\left(\sum_{i < j < k} (x_{ij} x_{jk} x_{ik} + x_{ij} x_{kj} x_{ki} + x_{ij} x_{kj} x_{ik}) + \sum_{i < j < k} (x_{ji} x_{jk} x_{ki} + x_{ji} x_{jk} x_{ik} + x_{ji} x_{kj} x_{ki}) \right)^{\alpha_{TT}}$

Table 1: Summary of network statistics used in the specification of a GERGM in this work. These are the α -outside specification of five commonly-used network statistics.

one can easily identify non-degenerate GERGM specifications for a weighted version of the two-star model. Importantly, we show that under certain weightings, Metropolis–Hastings can simulate networks with any desired edge density and clustering structure. The R code and all of the data used in this section are available in the online supplement.

5.1 International Lending Network

Our first application of the GERGM is to the network of aggregate private and public lending between 17 large industrialized nations in 2005. Weighted directed edges between nations represent the total monetary volume, in millions of U.S. dollars, that was loaned from one nation to another. Figure 1 illustrates this weighted network. This data was collected by the Bank for International Settlements (BIS) and a descriptive analysis was originally published in [Oatley et al. \(2013\)](#). To the best of our knowledge, there have been no published studies of international lending using statistical network models. There are numerous theoretical,

exploratory, and descriptive analyses on international lending as a network phenomenon (Niemira and Saaty, 2004; Nier et al., 2007; Rodriguez, 2007; Gai and Kapadia, 2010; Amini et al., 2013; Billio et al., 2012), especially in the wake of the 2008 financial crisis. One particular challenge in this network is the heavy tailed nature of the lending volumes (with the majority of lending concentrated between Germany, Great Brittan, Japan, and the United States). We first apply an $\ln(x+1)$ transformation on all aggregate lending flows between countries - a standard practice in international finance applications - and subsequently model the transformed edge weights using the GERGM.

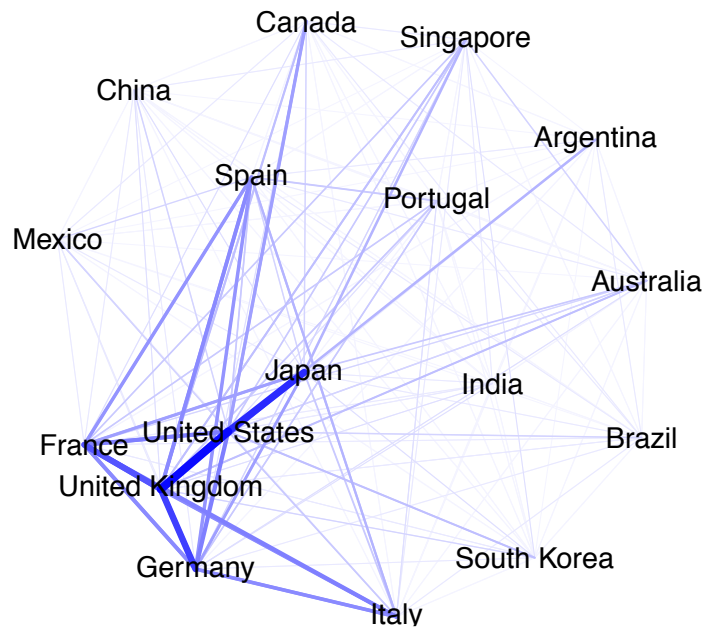


Figure 1: Network plot of the international aggregate interbank lending network. Darker edges indicate a larger volume of lending.

We control for several important exogenous predictors in the GERGM specification. In particular, we include sender and receiver effects for the (natural log) gross domestic product (GDP) as we expect countries with larger economies to both lend and borrow more than those with smaller economies. We also include network predictors that represent (normalized) aggregate trade volume between countries, as well as the (normalized) number of inter-governmental organization (IGO) co-memberships. We expect that countries that trade more with one another will also lend more with one another, and that those countries that share a larger number of co-memberships in IGOs will also be more likely to lend

more frequently with one another due to their increased diplomatic cooperation. Finally, we include mixing matrices parameterizing the propensity for countries to lend to each other based on G8 membership². We chose T as the cdf of a Student's t distribution with one degree of freedom, whose median is a linear regression on the specified exogenous predictors.

In addition to the exogenous predictors discussed above, we also include structural network predictors, including mutual dyads, transitive triads, and out two-stars statistics in our model. These statistics allow us to test for the presence of mutuality, clustering, and economies of scale in lending, all of which are theoretically important in the international trade (Oatley et al., 2013). Although this specification includes a number of exogenous covariates for control, we find that GERGM model with no α down weighting exhibited degeneracy. To address this degeneracy, we considered an exponentially weighted model using statistics from Table 1. We used the Metropolis–Hastings procedure to estimate the GERGM where network predictors were down-weighted by $\alpha_R = \alpha_{TT} = \alpha_{OTS} = 0.8$. The 0.8 value was selected because it was the largest value for which we could consistently estimate a non-degenerate model across multiple runs of estimation. We optimized the Metropolis-Hastings proposal variance at each step in the estimation process (with a target acceptance rate of 0.25 ± 0.05) initialized a burn-in of 400,000 full network samples, and then sampled 800,000 networks from which we thinned the resulting sample by keeping every two hundredth network. The average acceptance rate was approximately 0.22. The resulting parameter estimates are given in Table 2. To assess convergence of the estimated models, we simulated 800,000 networks and compared the distribution of the mutual dyads, transitive triads, and out two-stars statistics to the observed values in the lending network. Further, we investigated the goodness of fit of our model by comparing the distributions of the simulated and observed in two-stars, cyclic triads, and network density distributions. These results are shown in Figure 2.

As we can see from Figure 2, our model has appeared to have converged based on the distributions of the transitive triads, mutual dyads, and out two-stars statistics. In terms of goodness of fit, we see that our model provides a very good fit for the observed network in

²The G8 member countries are Canada, France, Germany, Italy, Japan, Russia, the United Kingdom and the United States.

Statistic	Parameter Estimate (s.e.)
Transitive Triads	1.387 (0.478)
Out Two Stars	-2.645 (0.811)
Mutual Dyads	7.023 (2.900)
G8 Sender, G8 Receiver	1.505 (0.186)
G8 Sender, Non-G8 Receiver	0.804 (0.177)
Non-G8 Sender, G8 Receiver	1.480 (0.147)
IGO Co-members	1.390 (0.210)
log(GDP) Sender	0.606 (0.126)
log(GDP) Receiver	4.887 (1.040)
Normalized Net Exports	-0.068 (0.046)

Table 2: Estimates of the network parameters of the GERGM model when fit to the international lending network via the Metropolis–Hastings procedure.

terms of cyclic triads; however, the in-two-stars and network density values are somewhat overestimated. Geweke statistics and trace plots of the network density for 800,000 networks simulated from the fitted GERGM specification via Metropolis–Hastings simulation also indicate that the model has converged (see Figure 6 in the Appendix). The exogenous covariate parameter estimates from our model largely conform to our theoretical expectation, although it is interesting that we see a small (negative) parameter estimate for the effect of trade, indicating that there is not a particularly strong relationship between trade and lending in our network, when controlling for other economic and network factors. We observe positive and statistically significant transitivity and reciprocity effects, and a negative out-two stars effect. These results are interesting because previous studies, including [Oatley et al. \(2013\)](#), have argued that the international lending network is hierarchical - a property that does not match our results as we would expect to see a positive out two-stars parameter estimate. Further exploration of this finding is outside of the scope of this discussion, but should be considered in future research.

To further assess the potential for degeneracy in our model, we performed a hysteresis analysis similar to that described in [Snijders et al. \(2006\)](#) for each structural parameter estimate. Starting with a sparse network and holding all other parameter estimates at their posterior means, we varied each structural parameter estimate ten standard deviations below to ten standard deviations above its posterior mean and simulated 500,000 networks using our Metropolis–Hastings procedure from each parameter value combination (with

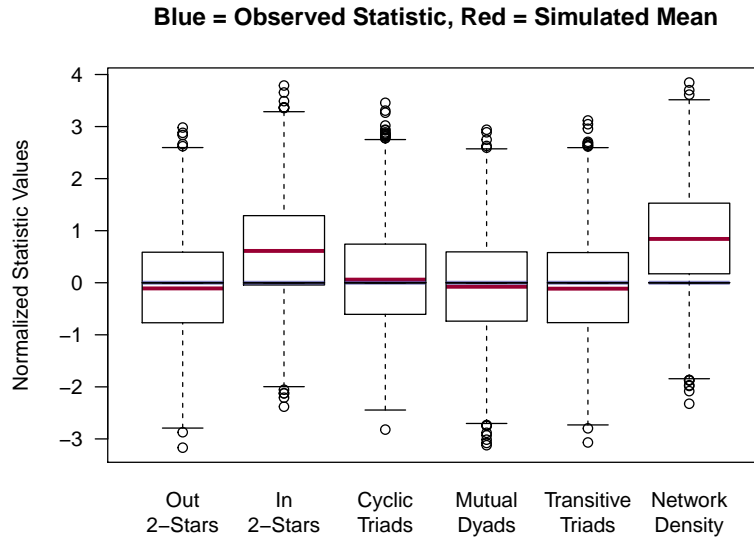


Figure 2: Convergence and goodness of fit plots for the model fitted to the international lending network. For each fit model, 800,000 networks were simulated using the Metropolis–Hastings sampling procedure and the final exogenous and structural parameter estimates. Each box plot compares the quantiles of simulated networks (with mean statistic values at the red line) to the observed network statistic (blue line). Here, the In 2-Stars and Network Density statistics were not included in the fitted model.

a burnin of 500,000). We changed the structural parameter value 0.5 standard deviations at each iteration of this process, for a total of 41 parameter values. For each new value of the parameter, we used the final network from the M-H simulation using the previous parameter value as the initialization for the M-H simulation for the new specified parameter. We plotted the mean network density against the parameter values in order to assess the potential for jumps in the network density that might indicate an underlying issue with model degeneracy. Figure 3 shows the hysteresis plots for our model, and these plots do not indicate any obvious issues with degeneracy in this specification.

5.2 U.S. Migration Network

We next apply the GERGM to the U.S. migration network analyzed in [Desmarais and Cranmer \(2012\)](#). We note that this application is used for validation of our Metropolis–Hastings procedure; indeed, we compare the estimates obtained with Metropolis–Hastings directly with the estimates obtained from the Gibbs sampler for the same GERGM specification.

Historically, interstate migration has played an important role in the understanding of local financial markets, public infrastructure, and the political climate within each state ([Clark and Ballard, 1981](#); [Levine and Zimmerman, 1999](#); [Gimpel and Schuknecht, 2001](#)).

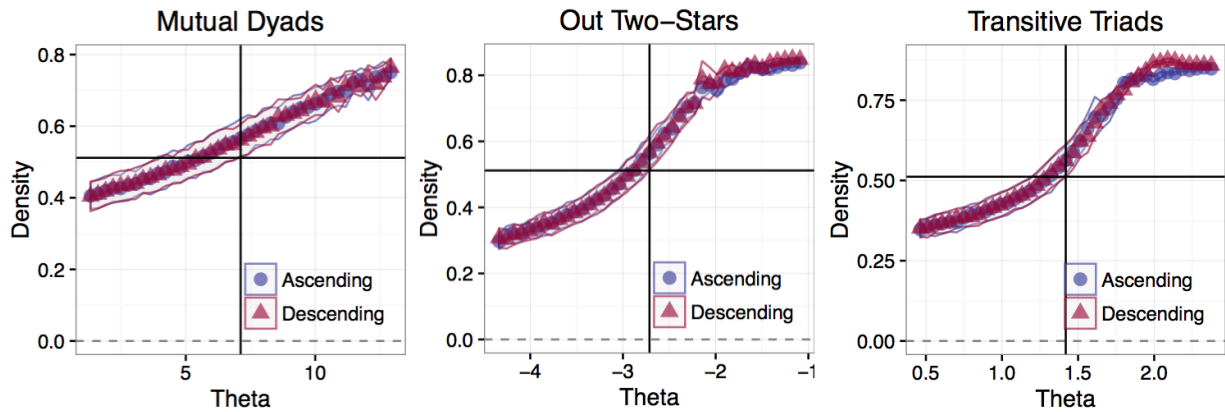


Figure 3: Hysteresis plots for the international trade network. Shaded regions cover ± 1.96 standard deviations in the simulated network densities for that parameter value. The vertical black line indicates the parameter value from the main estimation step and the horizontal black line indicates the observed network density.

The network that we model contains 51 nodes that represent the 50 U.S. states as well as Washington, D.C. Directed edges are placed between states in which there was a change in interstate migration flow from 2006 and 2007. The weight, y_{ij} , associated with the directed edge from node i to node j is the total change in interstate migration from state i to state j between 2006 to 2007. This data set also contains ten demographic exogenous predictors that further describes the pairwise relationships between states. The predictors describe the geographic distance, and the sender and receiver effects of high January temperature, income, unemployment, and population of the states. Like the application in Section 5.1, we chose T as the cdf of a Student t distribution with one degree of freedom, whose median is a linear regression on the specified demographic predictors.

We incorporated network statistics that represent reciprocity, cyclic triads, in-two-stars, out-two-stars, and transitive triads in our GERGM specification, and following the model fit in [Desmarais and Cranmer \(2012\)](#) we used no α down-weighting.

We fit the above model using both the Metropolis–Hastings sampling procedure and Gibbs. For Gibbs, we use 50,000 simulated networks with a set burn-in of 10,000 networks in each iteration. We optimized the Metropolis-Hastings proposal variance at each step in the estimation process (with a target acceptance rate of 0.25) initialized a burn-in of 1,000,000 full network samples, and then sampled 2,000,000 networks from which

we thinned the resulting sample by keeping every one thousandth network. The average acceptance rate was approximately 0.24. The parameter estimates and associated standard errors for each method are shown on in Table 3.

Statistic	M-H Parameter Estimate (s.e.)	Gibbs Parameter Estimate (s.e.)
Transitive Triads	0.074 (0.053)	0.078 (0.053)
Cyclic Triads	-0.206 (0.042)	-0.204 (0.040)
Out Two Stars	0.017 (0.044)	0.011 (0.043)
In Two Stars	-0.029 (0.039)	-0.030 (0.040)
Mutual Dyads	-0.131 (0.348)	-0.107 (0.338)
Unemployment Sender	27.163 (13.481)	27.402 (13.463)
Unemployment Receiver	-3.673 (12.382)	-3.475 (12.476)
Mean January Temp. Sender	-11.031 (14.474)	-11.167 (14.452)
Mean January Temp. Receiver	-15.147 (13.609)	-15.101 (13.713)
Population Size Sender	1.806 (20.264)	1.744 (20.244)
Population Size Receiver	-35.532 (16.127)	-35.282 (16.215)
Mean Income Sender	2.349 (11.613)	2.220 (11.583)
Mean Income Receiver	-1.129 (10.652)	-0.969 (10.735)
Distance	7.081 (11.917)	7.218 (11.970)
Dispersion	5.942 (0.029)	5.942 (0.029)

Table 3: Estimates of the network parameters of the GERGM model when fit to the U.S. migration network via the Metropolis–Hastings and Gibbs sampler procedures.

Table 3 reveals that the Metropolis–Hastings and Gibbs procedures provide comparable estimates for each of the modeled predictors. This suggests that each method simulates from the same distribution, as expected. Furthermore, these fitted GERGM reveals three interesting, perhaps expected, trends in the data: (i) there was increased migration away from states with high unemployment, (ii) there was decreased migration to states with a large population, and (iii) there was decreased migration to states with high unemployment. See [Desmarais and Cranmer \(2012\)](#) for a more detailed discussion of these results. We provide further estimation diagnostics for the Metropolis–Hastings procedure in the Appendix.

5.3 Non-Degenerate Specifications of the Two-Star Model

In our simulation study, we consider fitting a GERGM to a directed and weighted variant of the two-star model. Consider an edge configuration $x \in [0, 1]^m$. We model the occurrence

of x as a function of its edges and in-two-stars:

$$f_X(x, \boldsymbol{\theta}, \alpha) = \frac{\exp(\theta_E h_E(x) + \theta_{ITS} h_{ITS}(x, \alpha))}{C(\theta_E, \theta_{ITS})}, \quad x \in [0, 1]^m \quad (16)$$

$$h_E(x) = \sum_{i \neq j} x_{ij} / m$$

$$h_{ITS}(x, \alpha) = \left(\sum_i \sum_{j < k \neq i} x_{ji} x_{ki} \right)^\alpha,$$

where $C(\theta_E, \theta_{ITS})$ is the normalizing constant that ensures $f_X(x, \boldsymbol{\theta})$ integrates to one, $h_E(x)$ is the edge density of x , and $h_{ITS}(x, 1)$ is the in-two-star density of x . When $\alpha = 1$, model (16) is the directed and weighted version of the two-star model considered in [Handcock et al. \(2003\)](#). Model (16) is closely related to the triangle model from [Jonasson \(1999\)](#); [Hägström and Jonasson \(1999\)](#) and the widely used Ising model for lattice processes. We will refer to model (16) as the weighted in-two-stars model.

The unweighted two-star model is a well-known example that suffers from likelihood degeneracy (see [Handcock et al. \(2003\)](#) or [Snijders et al. \(2006\)](#) for instance). In this simulation study, we empirically analyze model (16) following a similar study as that described in [Snijders et al. \(2006\)](#). We find that, surprisingly, the weighted in-two-stars model does *not* demonstrate the typical signs of degeneracy. We now describe the simulation study and our findings.

We first fix the edge density parameter θ_E at -2 and a value of α between 0 and 1. We then simulate one million size 10 networks following model (16) for each integer value of θ_{ITS} between -10 and 10 using the MH sampler. We calculate the mean edge density and the mean in-two-stars value from the million samples at each value of θ_{ITS} . We repeat this procedure for α values of 0.10, 0.25, 0.50, 0.75, 0.90, and 1. The results are reported in [Figure 4](#).

We see from [Figure 4](#) that for $\alpha = 1$, there is a large jump in the value of the in-two-stars and edge density statistics between $\theta_{ITS} = 0$ and $\theta_{ITS} = 1$. As α decreases, the relative magnitude of this jump decreases and the statistics' curves are relatively smooth over changes in θ_{ITS} . When α is too small (≤ 0.50), the in-two-stars statistic value approaches

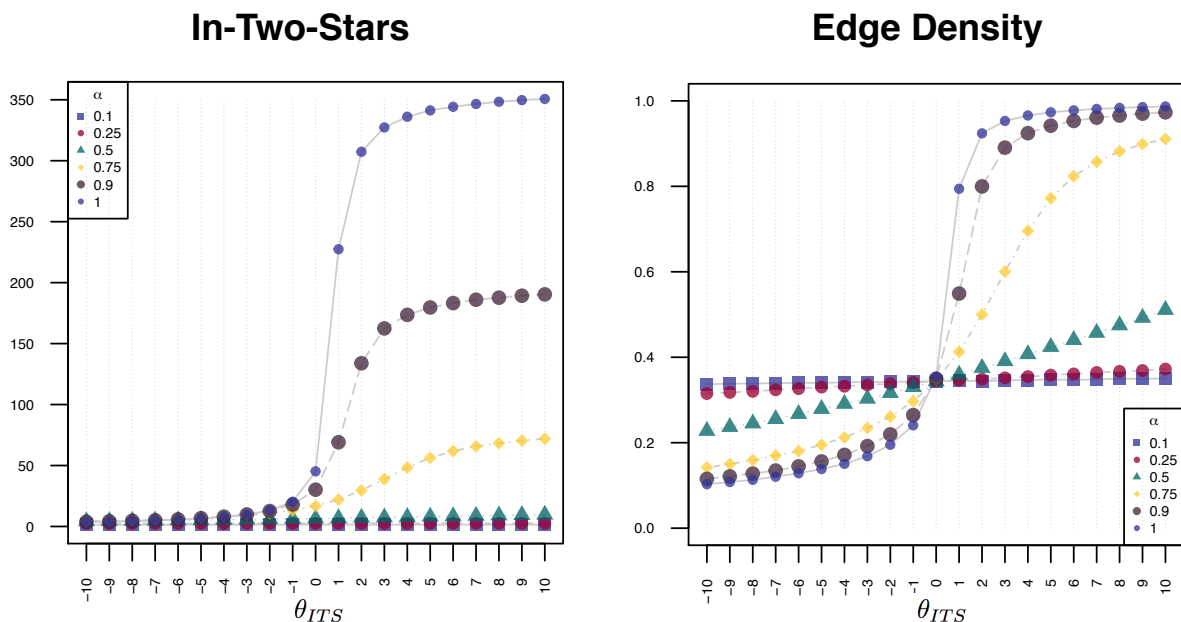


Figure 4: The mean value of the in-two-stars statistic and the edge density of one million simulated networks of the in-two-stars model with $\theta_E = -2$ and integer values of θ_{ITS} from -10 to 10. The mean values are shown for α values of 0.10, 0.25, 0.50, 0.75, 0.90, and 1.

one and the edge density only changes slightly across values of θ_{ITS} . The jump phenomenon was also witnessed for binary networks in the two-stars model in [Snijders et al. \(2006\)](#), where it was observed that this model specification was most prone to degeneracy issues. As a consequence, one may expect the empirical distribution of the in-two-stars and edge-density statistics in the neighborhood of $\theta_{ITS} = 0$ and $\theta_{ITS} = 1$ to be bimodal at large values of α .

To investigate whether this is the case, we performed a more fine grained grid search for the value of θ_{ITS} at which the edge density of the network changed the most, for each value of α . We found that, for example, when $\alpha = 0.5$, the steepest change in the edge density occurred at approximately $\theta_{ITS} = 0.55$. Similarly, for $\alpha = 0.75$ and $\alpha = 1$, the steepest changes in the edge density occurred at approximately $\theta_{ITS} = 0.65$ and $\theta_{ITS} = 0.75$, respectively. We show the empirical distribution for both of the statistics for α values of 0.50, 0.75, and 1.00 at the values of θ_{ITS} given above, in [Figure 5](#). [Figure 5](#) suggests that

these distributions are *not* bimodal for these values of α , including $\alpha = 1$. We also evaluated these distributions for all other values of θ_{TTS} in our simulations and found similar results. Furthermore, these results are not sensitive to the value of θ_E , as it serves only to shift the curves depicted in Figure 4 left or right. These findings suggest that the weighted in-two-stars does not suffer from the same degeneracy issues as its binary counterpart.

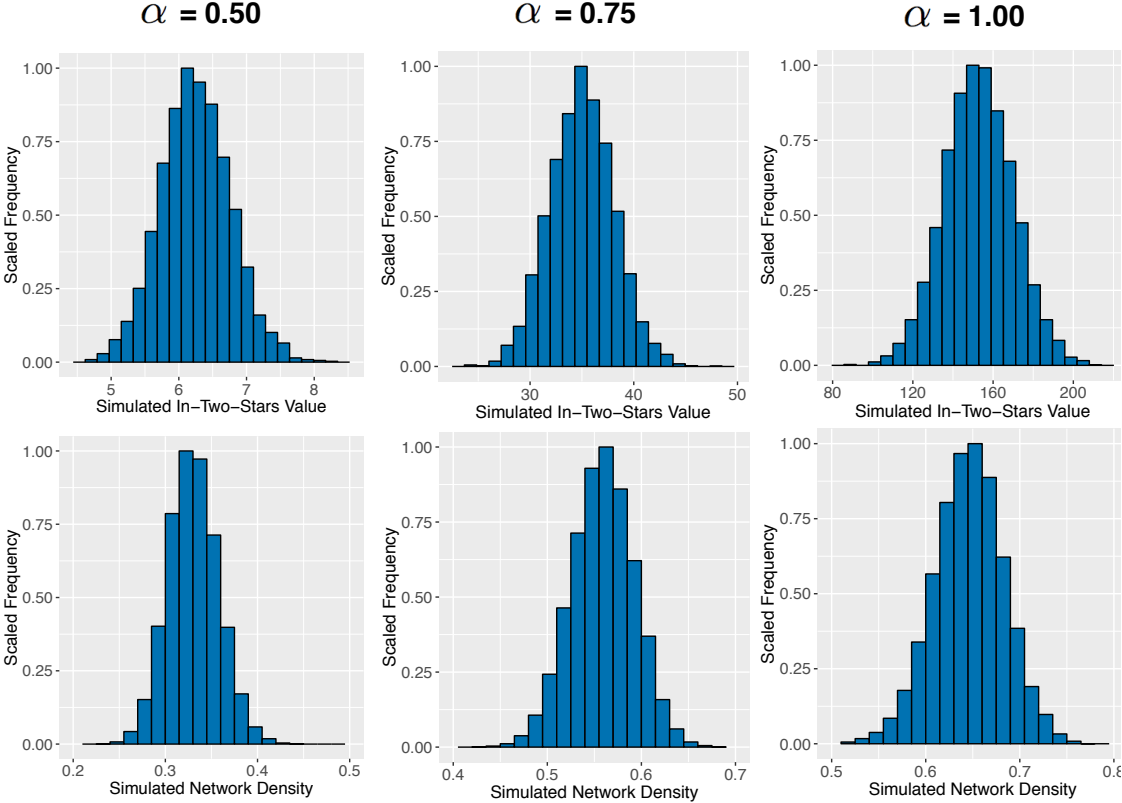


Figure 5: The empirical (scaled) frequency distribution of the edge density and the in-two-stars value for the in-two-stars model at $\theta_{\text{TTS}} = \{0.55, 0.65, 0.75\}$ (from left to right). One million networks were simulated and the values for each statistic is shown over all networks.

In summary, this simulation study provides insights into two important features of the GERGM specification of the two-stars model. First, the weighted in-two-stars models does not appear to suffer from degeneracy at any value of α . This surprising result is contrary to the well-known unweighted two-stars model. This simulation also gives some intuition as to how to choose the tuning parameter α . Small values of α (≤ 0.50) dampened the effect of the in-two-stars statistic too drastically and are therefore not suggested. We encourage using values of α between 0.5 and 0.9 as these values lead to decreased sensitivity of the

GERGM model to parameter changes.

6 Discussion

We have proposed, explicated, and demonstrated several advances in the statistical modeling of weighted networks by substantially increasing the utility of the GERGM. These extensions to the GERGM, taken together, represent a significant increase in the model’s capabilities, such that it is now possible to use nearly any model specification for inference on continuous-valued weighted graphs.

First, we have proposed and implemented a Metropolis–Hastings algorithm for fitting GERGMs. In the original development of the GERGM, [Desmarais and Cranmer \(2012\)](#) proposed a Gibbs sampling strategy to estimate the model. However, this approach is limited by the fact that fairly strict constraints are placed on the set of network statistics that can be used in the model. Our Metropolis–Hastings procedure relaxes these restrictions and allows one to use the full set of possible specifications for the model.

Second, we have proposed an approach to dampening the extreme values often produced by subgraph sums and thus avoiding model degeneracy. This dampening technique, because it is critical in avoiding degenerate model specifications in the GERGM, allows analysts to specify a practical and diverse set of endogenous effects as part of the network data generating process. Though this may seem a simple extension to the means by which statistics are computed on the network, this weighting strategy is important because degeneracy is a major obstacle to estimation of inferential models on real-world networks.

We consider two approaches to network statistic dampening—one in which subgraph-specific sums are raised to a fractional exponent (i.e., α -inside dampening), and a stronger approach that involves raising the sum over all subgraphs to a fractional exponent (i.e., α -outside dampening). It is important to re-iterate that, while the α -inside approach conforms to the local dependence that is typical to ERGM formulations, the α -outside approach induces global dependence in that each tie variable depends to some degree on the value of every other tie variable in the network. We see from Equation 15 that the α -outside formulation exhibits a form of dependence similar to the α -inside formulation in that high edge values are more likely if they contribute to local configurations that are themselves high

and associated with positive parameter values. However, the α -outside formulation exhibits an additional form of dependence in that the likelihood of high edge values embedded in high value configurations decreases as the global sum over the respective configuration type increases. This global dampening in the α -outside model is inversely related to the value of α . Though the α -inside and α -outside formulations may both be considered in efforts to avoid degeneracy, we note that researchers should also consider how the choice between these two formulations affects the interpretation of results.

Though we have presented important innovations here, much work remains. Specifically, we have just scratched the surface when it comes to model selection and specification for GERGMs. First, both in [Desmarais and Cranmer \(2012\)](#) and in the current study, the statistics used to specify the GERGM have represented straightforward functional adaptations of the statistics commonly used for binary ERGMs. Future research should consider suites of statistics that are applicable to the special case of weighted networks. Furthermore, our approach to weighting the subgraph products requires a choice of α that will rarely be theoretically informed. In our simulation study, we analyzed the effects of α on the sensitivity of the two-stars model and found encouraging results for $\alpha \in (0.5, 1]$. In principle, one could use an alternative data-driven approach that chooses α based on goodness of fit summaries. We plan to investigate this more fully in future work. Finally, the results in the simulation study gave empirical evidence in one well-studied model that the GERGM does not suffer from degeneracy like its binary ERGM counterpart. We aim to theoretically formalize these findings in future work.

Appendix

A: Pseudo-code for MCMC Maximum Likelihood Estimation of the GERGM

Algorithm 1: GERGM MCMCMLE

Data: Data and parameters
y ← vector of edge weights
Tol1 ← tolerance level for GERGM estimation convergence
Tol2 ← tolerance level for Metropolis–Hastings algorithm convergence
N ← number of network samples generated for each iteration of Metropolis–Hastings sampler
h ← vector of functions to calculate network statistics
T ← transformation function
c ← shape parameter # Default = 1
t ← 0 # iteration number
 $\Delta_1 \leftarrow 1000$
 $\Delta_2 \leftarrow 1000$

while $\Delta_1 > \text{Tol1}$ **do**
 t++; # Increment iteration

 if t = 1 **then**
 ESTIMATE β_t via MPLE
 else
 ESTIMATE β_t via Gradient Descent

 ESTIMATE THETA via **Algorithm 2** to obtain θ_t
 end

 if $\|\beta_{t-1}\|_2^2 \|\theta_{t-1}\|_2^2 > 0$ **then**
 $\Delta_1 = \frac{1}{2} \left[\frac{\|\beta_t - \beta_{t-1}\|_2^2}{\|\beta_{t-1}\|_2^2} + \frac{\|\theta_t - \theta_{t-1}\|_2^2}{\|\theta_{t-1}\|_2^2} \right]$
 else
 $\Delta_1 = \frac{1}{2} [\|\beta_t - \beta_{t-1}\|_2^2 + \|\theta_t - \theta_{t-1}\|_2^2]$
 end
end
return (β_t, θ_t)

Algorithm 2: ESTIMATE THETA

Initialize parameters
 $\hat{x} = T(y, \beta_t)$ # current estimate of edge weights based on estimate of β_t
 $\tilde{\theta}_0 = \theta_{t-1}$ # initialization of coefficient vector
 $r = 0$ # iteration number
 $m = \text{length}(y)$ # Number of edges

while $\Delta_2 > \text{Tol2}$ **do**

$r++$ # Increment iteration

 Simulate a sample x_0 of length m from density:

$$f(x|\tilde{\theta}_{r-1}) = \frac{\exp[\tilde{\theta}'_{r-1}h(x)]}{C(\tilde{\theta}_0)}, \quad C(\tilde{\theta}_{r-1}) = \int_{[0,1]^M} \exp[\tilde{\theta}'_{r-1}h(z)]dz$$

 RUN METROPOLIS HASTINGS UPDATE via **Algorithm 3** to obtain samples x_1, \dots, x_N .

 # Update $\tilde{\theta}_r$

$\tilde{\theta}_r = \text{argmax}_{\theta} [\theta'h(\hat{x}) - \log[\hat{C}(\theta)]]$ via Gradient Descent, where

$$\hat{C}(\theta) = \frac{C(\tilde{\theta}_{r-1})}{N} \sum_{j=1}^N \exp[(\theta - \tilde{\theta}_{r-1})'h(x_j)]$$

 # Calculate distance from previous step

if $\|\tilde{\theta}_{r-1}\|_2^2 > 0$ **then**

$$\quad \Delta_2 = \frac{\|\tilde{\theta}_r - \tilde{\theta}_{r-1}\|_2^2}{\|\tilde{\theta}_{r-1}\|_2^2}$$

else

$$\quad \Delta_2 = \|\tilde{\theta}_r - \tilde{\theta}_{r-1}\|_2^2$$

end

end

return $\tilde{\theta}_r$

Algorithm 3: METROPOLIS HASTINGS UPDATE

Data: Data and Parameters

σ^2 : variance of Truncated Normal density # Default = 1

x^0 Initial weighted network sample (all edges have values between 0 and 1).

n : total number of nodes in the network

loop over number of MH network samples

for $k = 0; k < N; k++$ **do**

 # Draw a single proposal sample

for $i = 0; i < n; i++$ **do**

for $j = 0; j < n; j++$ **do**

 Sample a proposed edge weight w_{ij} from a truncated normal distribution centered at the previous iteration's edge weight

$$w_{ij} \sim TN(x_{ij}^{k-1}, \sigma^2)$$

 Calculate the probability of the proposed edge weight w_{ij} under the truncated normal distribution centered around the current edge weight (x_{ij}^{k-1}).

$$p(w)_{ij} = \mathbb{P}(w \leq w_{ij} \mid x_{ij}^{k-1}, \sigma^2)$$

 Calculate the probability of the current edge weight (x_{ij}^{k-1}) under a truncated normal distribution centered around the proposed edge weight (w_{ij}).

$$p(x)_{ij} = \mathbb{P}(w \leq x_{ij}^{k-1} \mid w_{ij}, \sigma^2)$$

end

end

 Set w as the proposed network and x_{k-1} as the previous iteration's network.

 Calculate the following log joint pdfs:

$$P_x = \sum_i^n \sum_j^n \log(p(x)_{ij})$$

$$P_w = \sum_i^k \sum_j^k \log(p(w)_{ij})$$

 Calculate $\alpha = (P_x - P_w) + \theta' [h(w_{ij}) - h(x_{ij}^{k-1})]$

 Sample u from a Uniform(0,1) density

if $\log(u) \leq \alpha$ **then**

 | $x_k = w$

else

 | $x_k = x_{k-1}$

end

end

return x_1, \dots, x_N

B: GERGM Fit Diagnostics

To evaluate convergence of the Metropolis–Hastings procedure on the international lending network and the U.S. Migration data, we evaluate the trace plot for the network density of the simulated networks over 800,000 simulated networks. We show this plot in Figure

6. For the U.S. Migration data, we simulated 100,000 networks with 10,000 burn-in. The modeled statistics, as well as the MCMC traceplot for the network density for this data are shown in Figure 7. Visual inspection as well as the Geweke convergence test statistic suggest that the sampler has converged.

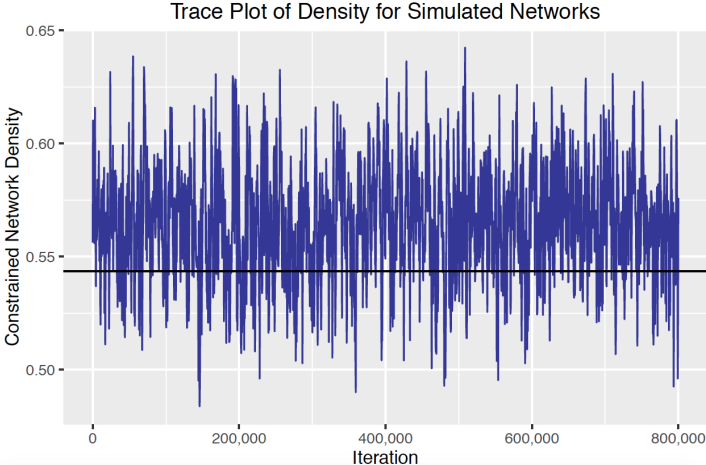


Figure 6: International lending network trace plot for the network density of the simulated networks over 800,000 simulations from Metropolis–Hastings.

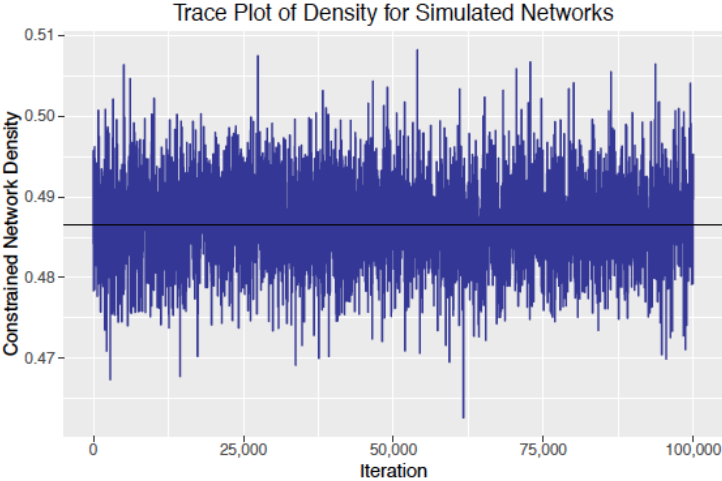


Figure 7: U.S. migration network trace plot for the network density of the simulated networks from 100,000 simulations from Metropolis–Hastings.

References

- Amini, H., Cont, R. and Minca, A. (2013), 'Resilience to contagion in financial networks', *Mathematical Finance* pp. 1–40.
- Billio, M., Getmansky, M., Lo, A. W. and Pelizzon, L. (2012), 'Econometric measures of connectedness and systemic risk in the finance and insurance sectors', *Journal of Financial Economics* **104**(3), 535–559.
- Browne, W. J. (2006), 'Mcmc algorithms for constrained variance matrices', *Computational Statistics & Data Analysis* **50**(7), 1655–1677.
- Chatterjee, S., Diaconis, P. et al. (2013), 'Estimating and understanding exponential random graph models', *The Annals of Statistics* **41**(5), 2428–2461.
- Chun, Y. (2008), 'Modeling network autocorrelation within migration flows by eigenvector spatial filtering', *Journal of Geographical Systems* **10**(4), 317–344.
- Claeskens, G., Silverman, B. W. and Slaets, L. (2010), 'A multiresolution approach to time warping achieved by a bayesian prior–posterior transfer fitting strategy', *Journal of the Royal Statistical Society: Series B (Statistical Methodology)* **72**(5), 673–694.
- Clark, G. and Ballard, K. (1981), 'The demand and supply of labor and interstate relative wages: an empirical analysis', *Economic Geography* pp. 95–112.
- Desmarais, B. and Cranmer, S. (2012), 'Statistical inference for valued-edge networks: The generalized exponential random graph model', *PLoS ONE* **7**(1), e30136.
- Frank, O. and Strauss, D. (1986), 'Markov graphs', *Journal of the American Statistical Association* **81**(395), 832–842.
- Franks, A. M., Csárdi, G., Drummond, D. A. and Airoidi, E. M. (2014), 'Estimating a structured covariance matrix from multi-lab measurements in high-throughput biology', *Journal of the American Statistical Association* (just-accepted), 00–00.
- Gai, P. and Kapadia, S. (2010), 'Contagion in financial networks', *Proceedings of the Royal Society A: Mathematical, Physical and Engineering Sciences* **466**(2120), 2401–2423.
- Genest, C. and MacKay, J. (1986), 'The joy of copulas: Bivariate distributions with uniform marginals', *The American Statistician* **40**(4), 280–283.
- Geweke, J. (1991), *Evaluating the accuracy of sampling-based approaches to the calculation of posterior moments*, Vol. 196, Federal Reserve Bank of Minneapolis, Research Department.
- Geyer, C. and Thompson, E. (1992), 'Constrained monte carlo maximum likelihood for dependent data', *Journal of the Royal Statistical Society. Series B (Methodological)* pp. 657–699.
- Gimpel, J. and Schuknecht, J. (2001), 'Interstate migration and electoral politics', *Journal of Politics* **63**(1), 207–231.

- Häggström, O. and Jonasson, J. (1999), 'Phase transition in the random triangle model', *Journal of Applied Probability* pp. 1101–1115.
- Handcock, M. S., Robins, G., Snijders, T., Moody, J. and Besag, J. (2003), 'Assessing degeneracy in statistical models of social networks', *Journal of the American Statistical Association* **76**, 33–50.
- Holland, P. and Leinhardt, S. (1981), 'An exponential family of probability distributions for directed graphs', *Journal of the American Statistical Association* **76**(373), 33–50.
- Hunter, D. and Handcock, M. (2006), 'Inference in curved exponential family models for networks', *Journal of Computational and Graphical Statistics* **15**(3), 565–583.
- Hunter, D. R., Handcock, M. S., Butts, C. T., Goodreau, S. M. and Morris, M. (2008), 'ergm: A package to fit, simulate and diagnose exponential-family models for networks', *Journal of Statistical Software* **24**(3), 1–29.
- Iori, G., De Masi, G., Precup, O., Gabbi, G. and Caldarelli, G. (2008), 'A network analysis of the italian overnight money market', *Journal of Economic Dynamics and Control* **32**(1), 259–278.
- Jonasson, J. (1999), 'The random triangle model', *Journal of Applied Probability* pp. 852–867.
- Krivitsky, P. N. (2012), 'Exponential-family random graph models for valued networks', *Electronic Journal of Statistics* **6**, 1100–1128.
- Levine, P. and Zimmerman, D. (1999), 'An empirical analysis of the welfare magnet debate using the nlsy', *Journal of Population Economics* **12**(3), 391–409.
- Lubetzky, E. and Zhao, Y. (2014), 'On replica symmetry of large deviations in random graphs', *Random Structures & Algorithms* .
- Lubetzky, E. and Zhao, Y. (2015), 'On replica symmetry of large deviations in random graphs', *Random Structures & Algorithms* **47**(1), 109–146.
- Müller, G. (2010), 'Mcmc estimation of the cogarch (1, 1) model', *Journal of Financial Econometrics* **8**(4), 481–510.
- Neelon, B., Anthopolos, R. and Miranda, M. L. (2014), 'A spatial bivariate probit model for correlated binary data with application to adverse birth outcomes', *Statistical methods in medical research* **23**(2), 119–133.
- Niemira, M. P. and Saaty, T. L. (2004), 'An Analytic Network Process model for financial-crisis forecasting', *International Journal of Forecasting* **20**(4), 573–587.
- Nier, E., Yang, J., Yorulmazer, T. and Alentorn, A. (2007), 'Network models and financial stability', *Journal of Economic Dynamics and Control* **31**(6), 2033–2060.

- Oatley, T., Winecoff, W. K., Pennock, A. and Danzman, S. B. (2013), ‘The Political Economy of Global Finance: A Network Model’, *Perspectives on Politics* **11**(01), 133–153.
- Park, J. and Newman, M. (2004a), ‘Solution of the two-star model of a network’, *Physical Review E* **70**(6), 066146.
- Park, J. and Newman, M. (2004b), ‘Statistical mechanics of networks’, *Physical Review E* **70**(6), 66117–66130.
- Park, J. and Newman, M. E. (2004c), ‘Solution of the two-star model of a network’, *Physical Review E* **70**(6), 066146.
- Pattison, P. and Robins, G. (2002), ‘Neighborhood-based models for social networks’, *Sociological Methodology* **32**, 301–337.
- Rinaldo, A., Fienberg, S. and Zhou, Y. (2009), ‘On the geometry of discrete exponential families with application to exponential random graph models’, *Electronic Journal of Statistics* **3**, 446–484.
- Roberts, G. O., Gelman, A. and Gilks, W. R. (1997), ‘Weak convergence and optimal scaling of random walk metropolis algorithms’, *The annals of applied probability* **7**(1), 110–120.
- Robins, G., Pattison, P. and Wasserman, S. (1999), ‘Logit models and logistic regressions for social networks: iii. valued relations’, *Psychometrika* **64**(3), 371–394.
- Rodriguez, J. C. (2007), ‘Measuring Financial Contagion: A Copula Approach’, *Journal of Empirical Finance* **14**(3), 401–423.
- Schweinberger, M. (2011), ‘Instability, sensitivity, and degeneracy of discrete exponential families’, *Journal of the American Statistical Association* **106**(496), 1361–1370.
- Simpson, S. L., Hayasaka, S. and Laurienti, P. J. (2011), ‘Exponential random graph modeling for complex brain networks’, *PLoS ONE* **6**(5), e20039.
- Snijders, T. A. B. (2002), ‘Markov chain monte carlo estimation of exponential random graph models’, *Journal of Social Structure* **3**(2), 1–40.
- Snijders, T., Pattison, P., Robins, G. and Handcock, M. (2006), ‘New specifications for exponential random graph models’, *Sociological Methodology* **36**(1), 99–153.
- Snyman, J. (2005), *Practical mathematical optimization: an introduction to basic optimization theory and classical and new gradient-based algorithms*, Vol. 97, Springer Science & Business Media.
- Strauss, D. and Ikeda, M. (1990), ‘Pseudolikelihood estimation for social networks’, *Journal of the American Statistical Association* **85**(409), 204–212.
- Van Duijn, M., Gile, K. and Handcock, M. (2009), ‘A framework for the comparison of maximum pseudo-likelihood and maximum likelihood estimation of exponential family random graph models’, *Social Networks* **31**(1), 52–62.

- Wasserman, S. and Pattison, P. (1996), 'Logit models and logistic regressions for social networks: I. an introduction to markov graphs and p^* ', *Psychometrika* **61**(3), 401–425.
- Wyatt, D., Choudhury, T. and Bilmes, J. (2010), Discovering long range properties of social networks with multi-valued time-inhomogeneous models, in 'Proceedings of the Twenty-Fourth AAAI Conference on Artificial Intelligence', pp. 630–636.