



CrossMark
 click for updates

Cite this: *RSC Adv.*, 2017, 7, 173

Tuning the photophysical properties of BODIPY dyes through extended aromatic pyrroles

Shawn Swavey,^{*a} John Quinn,^a Michael Coladipietro,^a Kegan G. Cox^b and M. Kyle Brennaman^b

Three new BODIPY dyes have been synthesized by a two-step synthetic route. This expands the series to nine different BODIPY dyes by this method. Naphtha[1,2-*c*]pyrrole was combined with 1-pyrenecarboxaldehyde to give a symmetric dipyrin followed by reaction with boron trifluoride to give a symmetric highly conjugated BODIPY dye. Expanding this synthetic route to a more conjugated pyrrole fluorantho[2,3-*c*]pyrrole was combined with 1-pyrenecarboxaldehyde followed by reaction with boron trifluoride to give the asymmetric BODIPY dye (9). Dyes with the more highly conjugated fluoranthopyrrole resulted in a bathochromic shift of ca. 50 nm in the electronic absorption and showed greater stability of the LUMO energy, as determined by electrochemical measurements, compared to their naphthapyrrole analogs. All of the dyes synthesized by this method display molar absorptivities greater than 100 000 M⁻¹ cm⁻¹ with photoluminescence quantum efficiencies of 0.8–1.0. Excited state lifetimes of the dyes in dichloromethane are modest, ranging from 3.2 ns to 4.3 ns.

Received 4th November 2016
 Accepted 29th November 2016

DOI: 10.1039/c6ra26331c

www.rsc.org/advances

Introduction

Over the past decade, the interest in BODIPY (4,4-difluoro-4-bora-3a,4a-diaza-s-indacene) dyes has generated hundreds of new compounds. Although much of this work has focused on improving the lasing properties of these compounds, other applications have emerged.^{1–5} In bioimaging, for example, tailoring of the photophysical properties of BODIPY dyes through synthetic modification has led to increased contrast and spatial imaging in living cells.^{6–8} Appropriate *meso* substitution enables these probes to be directed to particular regions of cells allowing insight into specific bio-reactions in real time.^{9–11} Other suitable applications for BODIPY dyes include dye sensitized solar cells (DSSCs) and opto-electronics, due in part to their near-unity luminescence quantum efficiency and NIR light absorption originally afforded by substitution at the *meso*-position of the dipyrin core.^{12,13} This strategy to achieve absorption in the NIR region of the electromagnetic spectrum, though effective, is somewhat limited. Fortunately, an alternative strategy has been found which involves introducing aromatically fused BODIPY cores to achieve sizable absorption red shifts.^{12–20} Notably, bathochromic shifts in the absorption spectrum have been achieved through β -substitution leading to fused ring systems incorporating biphenyl²¹ (673 nm), indole²² (607 nm), carbazole²³ (508 nm), and benzothieno²⁴ (658 nm).

Luminescence quantum efficiencies near unity were achieved with shorter-wavelength-absorbing BODIPY dyes; however, a significant decrease in quantum efficiency was observed for the biphenyl- and benzothieno-fused BODIPY dyes, 0.51 and 0.05 respectively. In addition to lower quantum efficiencies, the synthetic route to these fused BODIPY dyes requires multiple synthetic steps, harsh chemicals, and expensive catalysts. Rurack *et al.* has achieved luminescence quantum efficiencies near unity with absorption wavelengths between 621 nm and 642 nm from phenanthrene-fused BODIPY dyes with various *meso*-substituents.²⁵

We have recently described a two-step route toward BODIPY dyes²⁶ in which formation of the dipyrin was accomplished in the absence of solvent. Using naphthyl-pyrrole and a variety of aromatic aldehydes, a series of new BODIPY dyes were generated with long-wavelength absorption properties ranging from ca. 580 nm to 620 nm and near unity quantum efficiencies. It was argued that by judicious choice of aromatic aldehyde, *i.e.* sterically hindered *versus* non-sterically hindered, the BODIPY dyes generated would be either asymmetric or symmetric respectively, Scheme 1. To continue this study in an attempt to advance this new synthetic route as well as shift light absorption closer to the NIR, herein we report new BODIPY dyes based on fluoranthene pyrroles, Scheme 1 (framed).

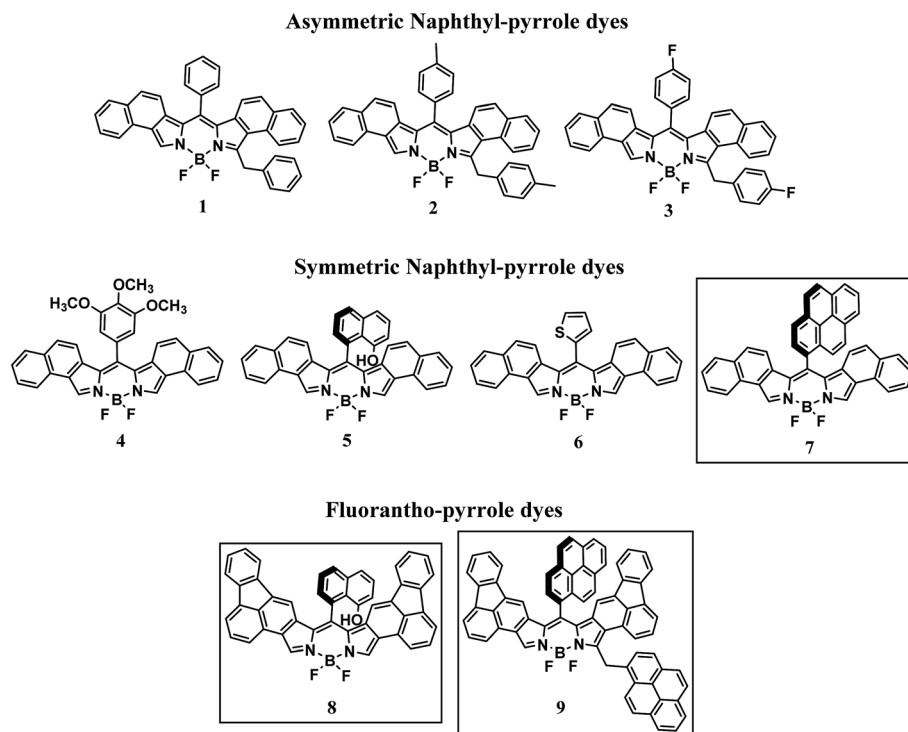
Experimental

All chemicals were reagent grade and used without further purification. Naphtha[1,2-*c*]pyrrole,²⁷ fluorantho[2,3-*c*]pyrrole²⁸ and BODIPY dyes 1–6 (ref. 26) were synthesized as previously

^aDepartment of Chemistry, University of Dayton, 300 College Park, Dayton, OH, 45469-2357, USA. E-mail: sswavey1@udayton.edu; Web: https://www.udayton.edu/directory/artsscience/chemistry/swavey_shawn.php; Tel: +1-937-229-3145

^bDepartment of Chemistry, University of North Carolina, Chapel Hill, NC, 27599, USA





Scheme 1 Molecular structures of BODIPY dyes.

described. Chromatography was performed on a Teledyne Combiflash R_f+ equipped with UV detection. High resolution mass spectral analysis was performed at the Mass Spectrometry and Proteomics facility at the Ohio State University. Elemental analysis was performed at Atlantic Microlabs Inc. Norcross, Georgia. ^1H NMR spectra were recorded on a Bruker 300 MHz NMR spectrophotometer at 298 K. Electronic absorption spectra were recorded at room temperature using an HP8453 photodiode array spectrophotometer with 2 nm resolution. All spectra were recorded at 298 K. Room temperature luminescence spectra in a 1 cm quartz spectrophotometer fluorescence cell (Starna) in DCM were run on a Cary Eclipse fluorescence spectrophotometer. Cyclic voltammograms were recorded under a nitrogen atmosphere using a one-compartment, three electrode cell, CH-Instruments, equipped with a platinum wire auxiliary electrode. The working electrode was a 2.0 mm diameter glassy carbon disk from CH-Instruments, which was polished first using 0.30 μm followed by 0.05 μm alumina polish (Buehler) and then sonicated for 10 s prior to use. Potentials were referenced to a Ag/Ag^+ non-aqueous electrode with ferrocene as an internal standard, CH-Instruments. The supporting electrolyte was 0.1 M tetrabutylammonium hexafluorophosphate (Bu_4NPF_6) and the measurements were made in dry DCM. Luminescence quantum yields were determined at room temperature in HPLC-grade DCM relative to Rhodamine 6G as the reference ($\phi = 0.95$, in ethanol).²⁹ The quantum yields were obtained using the following equation:

$$\phi_s = \phi_r [A_r \eta_s^2 D_s / A_s \eta_r^2 D_r]$$

where s and r refer to the sample and reference, respectively, A is the absorbance at the excitation wavelength, η is the average refractive index of the solution, and D is the integrated area under the emission spectrum.

Time-resolved emission measurements

Excited-state lifetimes were measured by the time-correlated single photon counting (TCSPC) technique implemented by using an Edinburgh Instruments FLS920 photoluminescence spectrophotometer. The FLS920 was outfitted with a Hamamatsu 2658P photomultiplier tube (PMT) mounted in a PMT housing cooled to -22 °C. Laser excitation was provided by a 484 nm diode laser (Edinburgh Instruments EPL-485, 93 ps FWHM pulse width, 2 mm beam diameter) operated at 20 MHz. Time-resolved emission for compounds 1–9 was monitored at 608, 612, 612, 612, 610, 620, 605, 650 and 650 nm, respectively with a bandwidth of 5–10 nm. A 515 nm long-pass filter was placed before the entrance of the emission monochromator to remove laser scatter. Methylene chloride solutions of each compound were prepared with maximum visible absorbance values less than 0.2 OD. For each compound, at least two measurements were performed using air-saturated solutions at 22 ± 2 °C. Each transient decay was recorded on a 50 ns time range (12.2 ps per channel) to achieve 10 000 peak counts. An instrument response function (IRF), with FWHM of 1.32 ns, was obtained by tuning the monochromator to 484 nm and collecting the laser light scattered by an aqueous Ludox solution. Emission decays were treated in Edinburgh L900 software (v7.1.1) with a reconvolution fit incorporating the Ludox-based IRF.



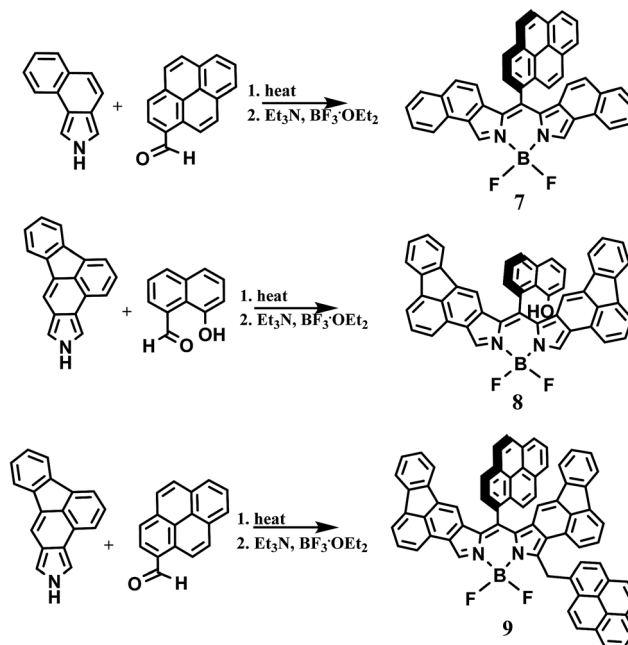
General synthetic procedure

To a 25 mL round bottom flask 50.0 mg (0.30 mmol) of naphtha[1,2-*c*]pyrrole or (0.21 mmol) of fluorantho[2,3-*c*]pyrrole and a molar equivalent of the appropriate aldehyde were combined. Approximately 1 mL of dichloromethane (other solvents *i.e.* methanol, acetone, chloroform also work) was added to give a homogenous solution. The solvent was then removed under reduced pressure and the flask was placed in a warm water bath preset at 70 °C for 15 min. Temperatures were increased until the reactant mixture turned to a purple paste. In the case of the fluorantho[2,3-*c*]pyrrole reactions, the mixture was placed in an oven and heated to 140 °C. The resulting purple paste was chromatographed on silica gel using DCM (to remove any polymers formed) collecting the first deep red band. The solvent was removed under reduced pressure and the flask was degassed with nitrogen. Approximately 4 mL of dry DCM was added followed by 100 μL of triethylamine and then 200 μL boron trifluoride etherate. The solution was stirred at room temperature under nitrogen overnight. The reaction mixture was washed with distilled water, dried over magnesium sulfate and chromatographed on silica gel using 90/10 chloroform/hexanes as eluent. The first band was collected and the solvent removed.

7. Yield 11 mg (12%) HRMS calcd for $C_{41}H_{23}N_2BF_2 [M^+]$ 592.19223 found 592.19156. 1H NMR ($CDCl_3$): δ ppm 7.02 (d, $J = 9.0$ Hz, 1H), 7.44–7.36 (m, 2H), 7.57 (dt, $J = 9.3, 5.8$ Hz), 7.95 (d, $J = 9.2$ Hz, 2H), 8.14–8.06 (m, 3H), 8.24–8.16 (m, 3H), 8.26 (s, 1H), 8.38–8.28 (m, 5H), 8.52–8.42 (m, 2H), 8.96 (br s, 1H), 9.45 (d, $J = 9.45$ Hz, 1H).

8. Yield 9.6 mg (14%) HRMS calcd for $C_{47}H_{25}N_2OBF_2 [M^+]$ 682.20280 found 682.20200. Elemental analysis calculated for $C_{40}H_{25}N_2OBF_2 \cdot CHCl_3 \cdot 0.5C_6H_{12}$: C, 72.57; H, 3.82; N, 3.32; found, C, 72.15; H, 4.10; N, 3.57.

9. Yield 22 mg (22%). HRMS calcd for $C_{70}H_{37}N_2BF_2 [M^+]$ 954.30178, found 954.30378. Elemental analysis calculated for $C_{70}H_{37}N_2BF_2 \cdot 0.5CHCl_3 \cdot 0.5C_6H_{12}$: C, 83.55; H, 4.15; N, 2.65; found, C, 83.31; H, 4.33; N, 2.66.



Scheme 2 Synthetic route of BODIPY dyes.

Scheme 2. Due to their complex proton NMR spectra, these dyes were characterized by high-resolution mass spectrometry and their purity determined by elemental analysis.

For naphtha[1,2-*c*]pyrrole, it was suggested that the steric bulk of the aldehyde determined the symmetry of the dipyrin with the symmetric dipyrin favored by highly substituted aldehydes. This does not seem to be the case with the fluorantho[2,3-*c*]pyrrole. This is evidenced by the formation of the symmetric BODIPY dye **8** while the bulkier 1-pyrenecarboxaldehyde favors the asymmetric BODIPY dye **9**. In addition, attempts to form BODIPY dyes from 3,4,5-trimethoxybenzaldehyde and 2-thiophenecarboxaldehyde, for comparison with our earlier study, resulted in only trace amounts of the desired products.

Results and discussion

Synthesis

In light of the recent report on the two-step synthetic route of highly conjugated BODIPY dyes²⁶ we have attempted to extend this synthetic route. By heating naphtha[1,2-*c*]pyrrole and 1-pyrenecarboxaldehyde at 80 °C for 15 min followed by chromatography on silica gel, the red dipyrin was obtained. The dipyrin was converted to the BODIPY dye **7** (Scheme 2) by reaction with boron trifluoride in the presence of triethylamine and dry DCM as previously described. After workup and purification, **7** was obtained as a golden solid. Characterization by high resolution mass spectrometry and 1H NMR confirmed the structure.

To further extend this procedure to more highly conjugated pyrroles, the readily available fluorantho[2,3-*c*]pyrrole was chosen.²⁸ To obtain the dipyrins based on this pyrrole; however, required heating at 140 °C, considerably higher than the naphthopyrrole based dipyrins. After purification, the dipyrins were converted to the BODIPY dyes **8** and **9** as previously described,

Spectroscopic properties

Electronic absorption and emission spectroscopy was performed for **7–9** in dry DCM at room temperature, Table 1 and

Table 1 Photophysical and electrochemical data for BODIPYs 1–9

Dyes	λ_{abs} (nm)	λ_{em} (nm)	$\epsilon, M^{-1} cm^{-1}$	τ (ns)	ϕ^a	LUMO (eV)	HOMO (eV)
1	600	608	107 000	4.2	1.0	−3.6	−5.3
2	600	612	152 000	4.3	0.8	−3.5	−5.3
3	602	612	140 000	4.0	1.0	−3.5	−5.3
4	596	604	158 000	4.1	0.9	−3.6	−5.4
5	603	612	176 000	4.2	1.0	−3.7	−5.4
6	612	619	194 000	3.2	0.5	−3.8	−5.4
7	599	613	138 000	4.0	1.0	−3.7	−5.4
8	642	654	110 000	3.5	0.8	−4.0	−5.4
9	645	657	124 000	3.5	0.8	−3.9	−5.4

^a Fluorescence quantum yields were obtained using Rhodamine 6G as a reference ($\phi = 0.94$ in ethanol).²⁹



Fig. 1–3. BODIPY 5, from our previous study, was included for comparison. Fig. 1A illustrates the electronic absorption spectra of 5 and 8. In general, electronic excitations of BODIPY dyes are the result of HOMO to LUMO transitions localized on the dipyrin core.¹ Both 5 and 8 exhibit sharp electronic absorption features, with the maximum absorption of 5 at 596 nm ($\epsilon = 158\,000\text{ M}^{-1}\text{ cm}^{-1}$) and of 8 at 642 nm ($\epsilon = 110\,000\text{ M}^{-1}\text{ cm}^{-1}$). The more highly conjugated BODIPY dye 8 shows a bathochromic shift of 46 nm compared to 5.

The emission spectra of 5 and 8 are illustrated in Fig. 1B. The emission peak for 5 appears at 604 nm with a Stokes shift of 223 cm^{-1} . The emission peak for 8 appears at 654 nm with a slightly larger Stokes shift of 285 cm^{-1} . The luminescence quantum efficiency for 5 was determined previously to be 0.9.²⁶ Typically BODIPY dyes with emission maxima greater than 600 nm exhibit quantum efficiencies well below unity. Notably, the quantum efficiency of 8 is 0.8, considerably higher than that observed for similar dyes with emission also peaking near 650 nm.¹

Normalized electronic absorption spectra of BODIPY dyes 7 and 9 are illustrated in Fig. 2A. Despite their structural differences with 7 symmetric and 9 asymmetric, both exhibit intense absorption peaks at wavelengths shorter than 400 nm

indicative of the pyrene moieties. It is noteworthy that 9, which contains an extra pyrene arm compared to 7, displays similar but more intense absorption within this region of the spectrum. Similar to the other BODIPY dyes, both 7 and 9 display sharp, intense, absorption bands with absorption peaks of 599 nm ($\epsilon = 138\,000\text{ M}^{-1}\text{ cm}^{-1}$) for 7 and 645 nm ($\epsilon = 124\,000\text{ M}^{-1}\text{ cm}^{-1}$) for 9. This represents a 46 nm bathochromic shift for the more conjugated pyrrole, Fig. 2A and Table 1. Emission of 7 is observed with a maximum at 613 nm with a Stokes shift of 381 cm^{-1} , Fig. 2B. Dye 9 displays an emission peak at 657 nm with a Stokes shift of 283 cm^{-1} , Fig. 2B. Luminescence quantum efficiencies for both 7 and 9 are at or near unity, Table 1.

It has been previously established that due to a near-orthogonal arrangement between the BODIPY core and its *meso*-substituent, there is typically no overlap of the π -electron clouds.³⁰ Indeed bulky *meso*-substituents limited by their size to freely rotate allow for extended lifetimes of the excited dyes by eliminating non-radiative decay mechanisms.³¹ Lifetime measurements of dyes 1–9 in DCM range from 3.2 ns to 4.3 ns suggesting the ability for non-radiative deactivation *via* some rotation at the *meso* positions. Surprisingly, dyes 8 and 9 exhibit the shortest lifetimes even though, structurally, they represent the most resistance to free rotation at the *meso* position. This

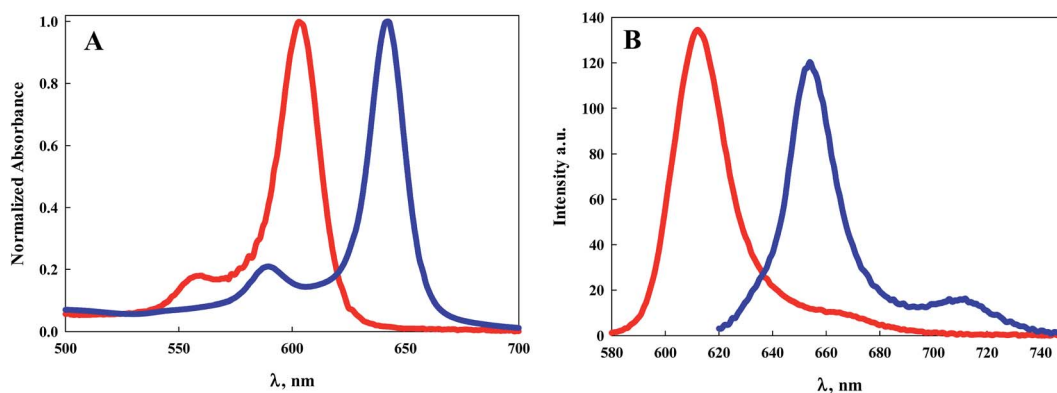


Fig. 1 (A) Electronic absorption spectra of 5 (red line) and 8 (blue line) in DCM; (B) emission spectra of 5 (red line) and 8 (blue line) when excited at their maximum absorption wavelength.

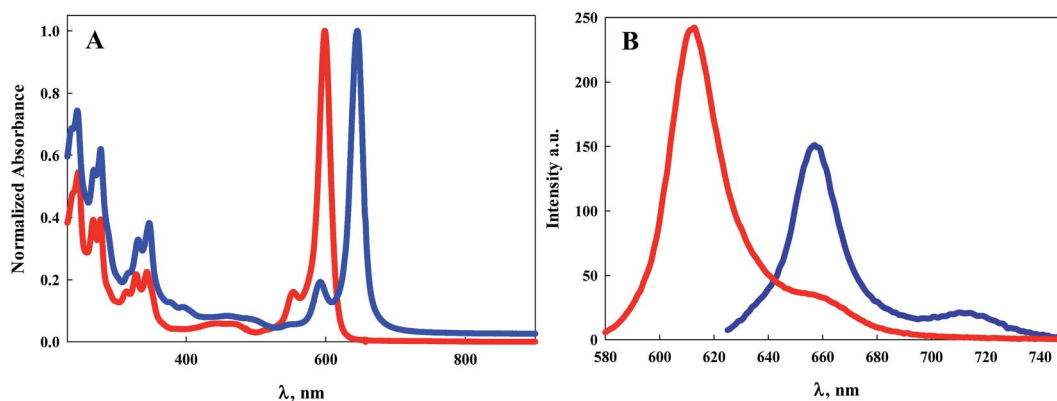


Fig. 2 (A) Electronic absorption spectra of 7 (red line) and 9 (blue line) in DCM; (B) emission spectra of 7 (red line) and 9 (blue line) when excited at their maximum absorption wavelength.



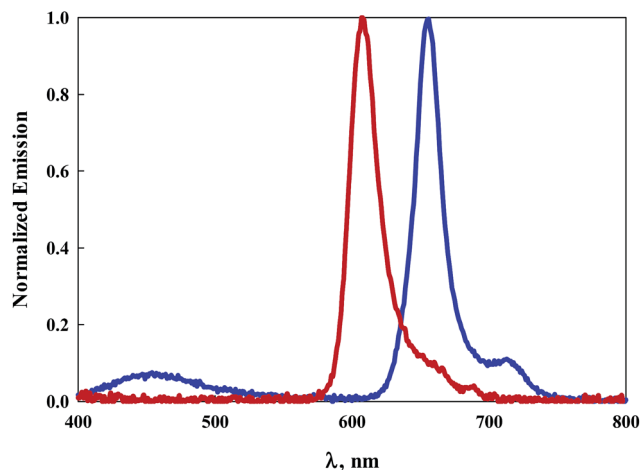


Fig. 3 Emission spectra of **7** (red line) and **9** (blue line) in DCM upon excitation at 344 nm.

suggests that another mechanism for non-radiative deactivation is likely responsible for the shorter excited-state lifetimes. Of the dyes in this study, only the pyrene-substituted BODIPY compounds **7** and **9** display significant absorption in the UV region. For both **7** and **9**, photoexcitation of the pyrene substituents at 344 nm results in emission peaking at 608 nm and 656 nm respectively, Fig. 3. A small emission peak is observed for the asymmetric, more highly conjugated dye **9** at ~ 450 nm associated with the pyrene moiety. The observation that excitation of the pyrene generates emission from the BODIPY core suggests either a through-bond or through-space intramolecular excitation energy transfer process.³⁰

Electrochemical properties

Cyclic voltammetry experiments were performed for **7–9** in DCM with TBAPF₆ as the supporting electrolyte. A one compartment three electrode cell was employed with a platinum wire auxiliary electrode and glassy carbon working electrode. The cell was equipped with a non-aqueous Ag⁺ reference electrode and

ferrocene as the internal standard. All experiments were performed at room temperature under a nitrogen atmosphere.

Scanning in the anodic direction, a quasi-reversible redox couple is observed for the BODIPY dye **7** with $E_{1/2} = 0.68$ V ($\Delta E = 120$ mV), Fig. 4A.

A reversible couple with $E_{1/2} = -1.23$ V ($\Delta E = 60$ mV) is revealed upon scanning in the cathodic direction. The cyclic voltammograms of the more conjugated BODIPY dyes **8** and **9** are less well defined, though redox activity is observed. In the case of **8**, a broad, irreversible oxidation is observed in the anodic region of the voltammogram with a peak potential of 0.77 V. When scanned in the cathodic direction, two irreversible reductions with peak potentials of -1.03 V and -1.43 V are observed, Fig. 4B. For **9**, Fig. 4B, an irreversible oxidation with peak potential of 0.75 V is followed by a quasi-reversible redox couple in the cathodic region with $E_{1/2} = -1.06$ V ($\Delta E = 70$ mV). Scanning further in the cathodic direction reveals two irreversible reduction waves with peak potentials of -1.45 V and -1.67 V.

From the onset of the oxidation and reduction waves, the HOMO and LUMO energies can be estimated.³² Scheme 3 depicts a Jablonski diagram of these energies for the BODIPY dyes of Scheme 1.

It has been established that coordination of the BF₂ moiety to the dipyrin serves to bring the π -orbitals of the dipyrin into alignment, resulting in a sharper, more intense, bathochromically shifted electronic transition.¹ Yet, theoretical calculations indicate that neither the HOMO nor LUMO electron density is located on the boron, but instead resides on the dipyrin core.³³ It is reasonable to assume then that any shifts in energy of the electronic transition of the BODIPY dyes is related to the pyrrole or the *meso*-substituent of the dipyrin. From the Jablonski diagram of Scheme 3, it appears that with the naphtha[1,2-*c*]pyrrole-based dyes, the HOMO energy is unaffected by the composition of the *meso*-substituent. Despite this, the symmetric dyes show greater stabilization of the HOMO energy compared to the asymmetric dyes. In the case of the fluorantho [2,3-*c*]pyrrole-based dyes, the HOMO energy is the same as that for the symmetric naphtha[1,2-*c*]pyrrole dyes and independent of the symmetry of the dye.

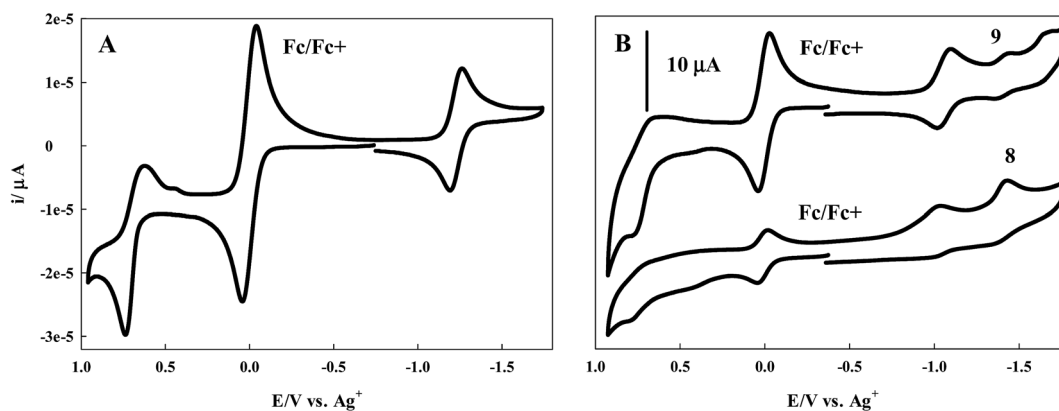
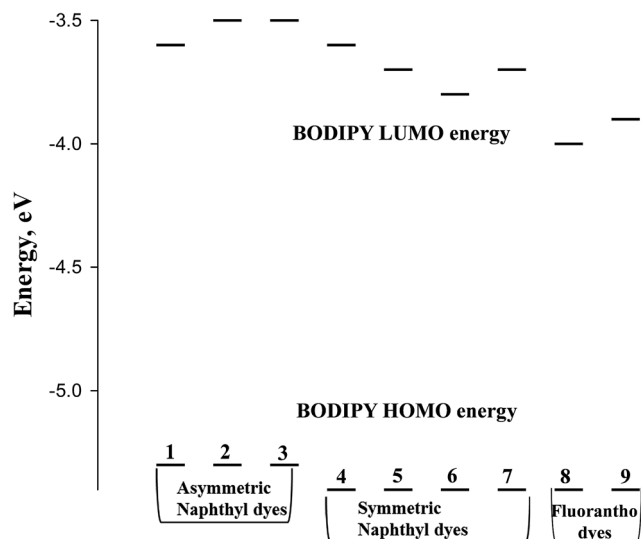


Fig. 4 (A) Cyclic voltammogram of **7** in DCM, (B) CV of **8** and **9** in DCM containing 0.1 M TBAPF₆ as the supporting electrolyte at room temperature, a glassy carbon working electrode, platinum wire auxiliary, Ag/Ag⁺ reference electrode, and ferrocene as internal standard. Scan rate = 100 mV s⁻¹.





Scheme 3 Jablonski diagram for the BODIPY dyes illustrated in Scheme 1.

It is well established that *meso*-substituents of BODIPY dyes are typically orthogonal to the BODIPY core thereby preventing overlap of the π -cloud associated with the BODIPY core and the π -cloud of the aromatic *meso*-substituent. Theoretical studies have indicated that electron-withdrawing *meso*-substituents stabilize the LUMO energy, while electron-donating *meso*-substituents destabilize the LUMO energy.³⁴ Considering this, comparison of the asymmetric naphthyl-pyrrole dyes (1–3) shows that the LUMO energy is destabilized in the dyes with the electron donating *para*-fluoro and *para*-methyl phenyl *meso*-substituents compared to the *meso*-phenyl dye, Scheme 3. For the symmetric naphthyl-pyrrole dyes (4–7), the LUMO energy exhibiting the greatest destabilization is associated with the *meso*-trimethoxyphenyl-substituted dye (4) while the most stabilized of this group belongs to the *meso*-thienyl substituted dye (6). The LUMO energy for the *meso*-substituted hydroxy-naphthyl (5) and pyrene (7) dyes is identical. This is surprising because, in the case of the fluorantho-pyrrole dyes, the pyrene-substituted dye (9) shows greater LUMO destabilization compared to the hydroxy-naphthyl fluorantho dye (8). However, this difference in energy may be associated with the symmetry or lack of symmetry since the asymmetric dyes destabilize the LUMO energy more than the symmetric dyes.

Conclusions

A simple two-step synthetic route to new BODIPY dyes has been established for a variety of aromatic aldehydes and π -conjugated pyrroles. These dyes display significant photophysical properties that can be tuned by both the choice of aldehyde as well as the choice of π -conjugated pyrrole. The role of the aldehydes plays less of a role in tuning the photophysical properties. Nevertheless, the versatility displayed by these aldehydes may allow for structural adaptations which could prove advantages for numerous applications. It is clear that the

greatest effect on the photophysical properties lies with the conjugation associated with the pyrroles. Extending this conjugation further may lead to efficient BODIPY dyes capable of light absorption and emission properties well into the near-IR region of the electromagnetic spectrum.

Acknowledgements

Time-resolved emission data was collected on an emission spectrophotometer (Edinburgh Instrument, FLS920) housed in the UNC EFRC Instrumentation Facility established by the UNC EFRC Center for Solar Fuels, an Energy Frontier Research Center funded by the U.S. Department of Energy, Office of Science, Office of Basic Energy Sciences under Award DE-SC0001011.

Notes and references

- 1 A. Loudet and K. Burgess, *Chem. Rev.*, 2007, **107**, 4891–4932.
- 2 A. Mishra, M. K. R. Fischer and P. Bauerle, *Angew. Chem., Int. Ed.*, 2009, **48**, 2474–2499.
- 3 G. Ulrich, R. Ziessel and A. Harriman, *Angew. Chem., Int. Ed.*, 2008, **47**, 1184–1201.
- 4 S. Kolemen, M. Isik, G. M. Kim, D. Kim, H. Geng, M. Buyuktemiz, T. Karatas, X.-F. Zhang, Y. Dede, J. Yoon and E. U. Akkaya, *Angew. Chem., Int. Ed.*, 2015, **54**, 5340–5344.
- 5 (a) A. Kamkaew, S. H. Lim, H. B. Lee, L. V. Kiew, L. Y. Chung and K. Burgess, *Chem. Soc. Rev.*, 2013, **42**, 77–88; (b) S. G. Awuah and Y. You, *RSC Adv.*, 2012, **2**, 11169–11183; (c) Z. Wang, X. Hong, S. Zong, C. Tang, Y. Cui and Q. Zeng, *Sci. Rep.*, 2015, **5**, 12602; (d) X. Hong, Z. Wang, J. Yang, Q. Zheng, S. Zong, Y. Sheng, D. Zhu, C. Tanga and Y. Cuic, *Analyst*, 2012, **137**, 4140–4149.
- 6 T. Gayathri, A. K. Barui, S. Prashanthi, C. R. Patra and S. P. Singh, *RSC Adv.*, 2014, **4**, 47409–47413.
- 7 A. M. Courtis, S. A. Santos, Y. Guan, J. A. Hendricks, B. Ghosh, D. M. Szantai-Kris, S. A. Reis, J. V. Shah and R. Mazitschek, *Bioconjugate Chem.*, 2014, **25**, 1043–1051.
- 8 L. Yang, Y. Liu, W. Liu, C. Ma, C. Zhang and Y. Li, *Bioorg. Med. Chem. Lett.*, 2015, **25**, 5716–5719.
- 9 S. D. Topel, O. Topel, R. B. Bostancioglu and A. T. Koparal, *Colloids Surf., B*, 2015, **128**, 245–253.
- 10 G. Fan, L. Yang and Z. Chen, *Front. Chem. Sci. Eng.*, 2014, **8**, 405–417.
- 11 B. Sui, S. Tang, T. Liu, B. Kim and K. D. Belfield, *ACS Appl. Mater. Interfaces*, 2014, **6**, 18408–18412.
- 12 S. P. Singh and T. Gayathri, *Eur. J. Org. Chem.*, 2014, **22**, 4689–4707.
- 13 S. Debnath, S. Singh, A. Bedi, K. Krishnamoorthy and S. S. Zade, *J. Phys. Chem. C*, 2015, **119**, 15859–15867.
- 14 S. Madhu and M. Ravikanth, *Inorg. Chem.*, 2012, **51**, 4285–4292.
- 15 T. Kowada, S. Yamaguchi and K. Ohe, *Org. Lett.*, 2010, **12**, 296–299.
- 16 C. Yu, L. Jiao, P. Zhang, Z. Feng, C. Cheng, Y. Wei, X. Mu and E. Hao, *Org. Lett.*, 2014, **16**, 3048–3051.



- 17 C. Cheng, N. Gao, C. Yu, Z. Wang, J. Wang, E. Hao, Y. Wei, X. Mu, Y. Tian, C. Ran and L. Jiao, *Org. Lett.*, 2015, **17**, 278–281.
- 18 A. B. Descalzo, H.-J. Xu, Z.-L. Xue, K. Hoffmann, Z. Shen, M. G. Weller, X.-Z. You and K. Rurack, *Org. Lett.*, 2008, **10**, 1581–1584.
- 19 Y. Kubo, K. Watanabe, R. Nishiyabu, R. Hata, A. Murakami, T. Shoda and H. Ota, *Org. Lett.*, 2011, **13**, 4574–4577.
- 20 S. Yamazawa, M. Nakashima, Y. Suda, R. Nishiyabu and Y. Kubo, *J. Org. Chem.*, 2016, **81**, 1310–1315.
- 21 Y. Hayashi, N. Obata, M. Tamaru, S. Yamaguchi, Y. Matsuo, A. Saeki, S. Seki, Y. Kureishi, S. Saito, S. Yamaguchi and H. Shinokubo, *Org. Lett.*, 2012, **14**, 866–869.
- 22 L. Luo, D. Wu, W. Li, S. Zhang, Y. Ma, S. Yan and J. You, *Org. Lett.*, 2014, **16**, 6080–6083.
- 23 C. Maeda, T. Todaka and T. Ema, *Org. Lett.*, 2015, **17**, 3090–3093.
- 24 Z.-B. Sun, M. Guo and C.-H. Zhao, *J. Org. Chem.*, 2015, 229–237.
- 25 Y.-W. Wang, A. B. Descalzo, Z. Shen, X.-Z. You and K. Rurack, *Chem.–Eur. J.*, 2010, **16**, 2887–2903.
- 26 S. Swavey, M. Coladipietro, A. Burbayea and J. A. Krause, *Eur. J. Org. Chem.*, 2016, 4429–4435.
- 27 T. D. Lash, M. L. Thompson, T. M. Werner and J. D. Spence, *Synlett*, 2000, **2**, 213–216.
- 28 T. D. Lash, T. M. Werner, M. L. Thompson and J. M. Manley, *J. Org. Chem.*, 2001, **66**, 3152–3159.
- 29 H. Sunahara, Y. rano, H. Kojima and T. Nagano, *J. Am. Chem. Soc.*, 2007, **129**, 5597–5605.
- 30 J. Banuelos, I. J. Arroyo-Cordoba, I. Valois-Escamilla, A. Alvarez-Hernandez, E. Pena-Cabrera, R. Hu, B. Z. Tang, I. Esnal, V. Martinez and I. L. Arbeloa, *RSC Adv.*, 2011, **1**, 677–684.
- 31 R. Ziessel, C. Goze, G. Ulrich, M. Cesario, P. Retailleau, A. Harriman and J. P. Rostron, *Chem.–Eur. J.*, 2005, **11**, 7366–7378.
- 32 LUMO (eV) = $-(E_{\text{red}} + 4.8)$; HOMO (eV) = $-(E_{\text{ox}} + 4.8)$.
- 33 J. Banuelos Prieto, F. Lopez Arbeloa, V. Martinez Martinez and I. Lopez Arbeloa, *Chem. Phys.*, 2004, **296**, 13–22.
- 34 J. K. Petrushenko and K. B. Petrushenko, *Spectrochim. Acta, Part A*, 2015, **138**, 623–627.

