


ORIGINAL ARTICLE

Myeloid but not epithelial tissue factor exerts protective anti-inflammatory effects in acid aspiration-induced acute lung injury

J. B. KRAL-POINTNER,* W. C. SCHROTTMAIER,* V. HORVATH,* H. DATLER,* L. HELL,† C. AY,†  B. NIEDERREITER,‡ B. JILMA,§ J. A. SCHMID,¶ A. ASSINGER,* N. MACKMAN,** S. KNAPP††‡‡ and G. SCHABBAUER*

*Institute for Physiology, Center for Physiology and Pharmacology, Medical University of Vienna; †Clinical Division of Hematology and Hemostaseology, Department of Medicine I, Medical University of Vienna; ‡Division of Rheumatology, Internal Medicine III, Medical University of Vienna; §Departments of Clinical Pharmacology, Department of Medicine I, Medical University of Vienna; ¶Department for Vascular Biology and Thrombosis Research, Center for Physiology and Pharmacology, Medical University of Vienna, Vienna, Austria;

**Division of Hematology/Oncology, Thrombosis and Hemostasis Program, UNC McAllister Heart Institute, University of North Carolina, Chapel Hill, NC, USA; ††CEMM, Research Center for Molecular Medicine of the Austrian Academy of Sciences; and ‡‡Laboratory of Infection Biology, Department of Medicine I, Medical University of Vienna, Vienna, Austria

To cite this article: Kral-Pointner JB, Schrottmaier WC, Horvath V, Datler H, Hell L, Ay C, Niederreiter B, Jilma B, Schmid JA, Assinger A, Mackman N, Knapp S, Schabbauer G. Myeloid but not epithelial tissue factor exerts protective anti-inflammatory effects in acid aspiration-induced acute lung injury. *J Thromb Haemost* 2017; **15**: 1625–39.

Essentials

- Tissue factor (TF) represents a central link between hemostasis and inflammation.
- We studied the roles of myeloid and airway epithelial TF in acid-caused acute lung injury (ALI).
- TF on myeloid cells displays a non-coagulatory role regulating the inflammatory response in ALI.
- Airway epithelial TF contributes to hemostatic functions, but is dispensable in ALI pathogenesis.

Summary. *Introduction:* Acute lung injury (ALI) is a life-threatening condition characterized by damaged alveolar-capillary structures and activation of inflammatory and hemostatic processes. Tissue factor (TF) represents a crucial link between inflammation and coagulation, as inflammatory mediators induce myeloid TF expression, and TF initiates extrinsic coagulation. *Objective:* As pulmonary inflammation stimulates TF expression and TF modulates immune responses, we aimed to elucidate its impact on ALI. In particular, we wanted to distinguish

the contributions of TF expressed on airway epithelial cells and TF expressed on myeloid cells. *Methods:* Mice with different cell type-specific TF deficiency and wild-type littermates were intratracheally treated with hydrochloric acid, and leukocyte recruitment, cytokine levels, thrombin–antithrombin (TAT) complexes and pulmonary protein-rich infiltrates were analyzed. *Results:* Our data demonstrate that a lack of epithelial TF did not influence acute responses, as bronchoalveolar neutrophil accumulation 8 h after ALI induction was unaltered. However, it led to mild, prolonged inflammation, as pulmonary leukocyte and erythrocyte numbers were still increased after 24 h, whereas those in wild-type mice had returned to basal levels. In contrast, myeloid TF was primarily involved in regulating the acute phase of ALI without affecting local coagulation, as indicated by increased bronchoalveolar neutrophil infiltration, pulmonary interleukin-6 levels, and edema formation, but equal TAT complex formation, 8 h after ALI induction. This augmented inflammatory response associated with myeloid TF deficiency was confirmed *in vitro*, as lipopolysaccharide-stimulated TF-deficient alveolar macrophages released increased levels of chemokine (C-X-C motif) ligand 1 and tumor necrosis factor- α as compared with wild-type macrophages. *Conclusion:* We conclude that myeloid TF dampens inflammation in acid-induced ALI.

Correspondence: Gernot Schabbauer, Center for Physiology and Pathophysiology, Medical University of Vienna, Schwarzspanierstrasse 17, A-1090 Vienna, Austria.

Tel: +43 1 40160 31427.

E-mail: gernot.schabbauer@meduniwien.ac.at

Received 6 July 2016

Manuscript handled by: W. Ruf

Final decision: P. H. Reitsma, 5 May 2017

Keywords: acute lung injury; blood coagulation; inflammation; macrophages; tissue factor.

Introduction

Tissue factor (TF), also referred to as factor III, thromboplastin, or CD142, is a glycosylated integral transmembrane protein that initiates the extrinsic coagulation cascade. TF is constitutively expressed on the surface by various extravascular tissues, such as pulmonary epithelium. Upon injury, e.g. to the alveolar–endothelial barrier, extravascular TF is exposed to plasmatic coagulation factors, e.g. FVII, and initiates clot formation. The generated thrombin triggers fibrin formation, which stabilizes the primary platelet plug. Hence, TF is important for protecting vascular integrity, and thus preventing uncontrolled and life-threatening blood loss [1–3]. Upon infection or inflammation, TF expression is readily induced on leukocytes that are usually devoid of surface TF. These TF-expressing leukocytes comprise members of the first line of defense, such as macrophages, but also circulating monocytes or neutrophils. Furthermore, blood vessel-lining endothelial cells are able to synthesize TF [4–6]. Stimuli triggering bloodborne TF expression during infection include pathogen-associated molecular patterns, e.g. lipopolysaccharide (LPS) or lipoteichoic acid, and endogenous inflammatory cytokines, e.g. tumor necrosis factor (TNF)- α and interleukin (IL)-1 β [7,8]. This process involves several transcription factors that are essential for immune functions, such as nuclear factor- κ B (NF- κ B), AP-1, nuclear factor of activated T cells, and early growth response-1 [9–12]. Hence, the properties of TF are not strictly confined to hemostatic functions, but also promote host defense and inflammation [13]. Therefore, reduced TF activity in mice leads to more severe bacteremia and increased mortality [14]. However, uncontrolled coagulation cascade activation markedly contributes to disseminated intravascular coagulation. Correspondingly, reduced TF expression protects mice from systemic endotoxemia [15], indicating that finely balanced TF expression is essential for adequate immune responses during sepsis. Furthermore, TF inhibition prevents secondary lung injury in a baboon sepsis model [16]. However, it remains incompletely understood how TF contributes to local infection and inflammation in organs such as the lung.

Acute lung injury (ALI) represents a multifactorial disease that can be induced by aspiration of non-infectious acidic gastric contents as well as by pathogenic lung infections. The role of TFs in different pathologies of lung injury are still undefined. A recent study investigating low-TF mice subjected to LPS-induced ALI suggested that reduced TF expression exacerbates disease pathogenesis [17]. Cell type-specific TF deficiency in type I and type II lung epithelial cells worsens LPS-induced ALI by increasing alveolar permeability and hemorrhage. In contrast, mice devoid of myeloid TF show no overt differences in the severity of lung damage [18]. In the present study, we focused on cell type-specific roles of TF in acid-induced ALI. This clinically relevant mouse model mimics

aspiration of gastric contents leading to lung complications (particularly in patients admitted to intensive care units), which accounts for 11% of all ALI cases in clinics [19], and is characterized by the release of endogenous alarm signals, damage-associated molecular patterns (DAMPs), and simultaneous Toll-like receptor activation [20,21]. The resulting inflammation is associated with endothelial cell activation, leukocyte and platelet influx, activation of coagulation, fibrin deposition, and, eventually, damage to the alveolar–capillary barrier [22]. Notably, activation of the coagulation cascade plays a relevant role in disease progression [23].

As coagulatory and inflammatory processes affect the pathogenesis of ALI, we wanted to elucidate the impact of TF on these events during ALI. Thus, we endeavored to elucidate whether the presence of TF is required to protect the integrity of alveolar–capillary structures. Moreover, we aimed to define cell type-specific functions of TF, and therefore performed acid-induced ALI in mice with TF deficiency in either myeloid cells (monocytes, macrophages, and granulocytes) or alveolar type I and type II epithelial cells. Our data indicate that TF acts in a cell type-specific manner, and that myeloid TF, in contrast to airway epithelial TF, dampens inflammatory responses during acid-induced ALI.

Materials and methods

Mice

All experiments and animal studies were conducted according to institutional guidelines and were approved by the Animal Care and Use Committee of the Medical University of Vienna (BMWF-66.009/0320-II/3b/2013; BMWF-66.009/0254-II/3b/2013).

All animal experimentation was littermate-controlled. We used previously described LysM $cre^{+/-}TF^{flox/flox}$ (referred to as TF^{Δmyc}) [24,25] or SPC $cre^{+/-}TF^{flox/flox}$ (referred to as TF^{Δepi}) [18] mice on a C57BL/6J genetic background (backcrossed for six generations), and 8–12-week-old, sex-matched littermates (control LysM $cre^{-/-}TF^{flox/flox}$ and SpcCre $^{-/-}TF^{flox/flox}$, referred as TF^{+/+} or wild-type).

Direct PCR of lysed tissue was performed for genotyping. (Primers: TF forward, 5'-ATGAGGAGCTGTGTTA AAGGGTCGCAGA-3'; TF reverse, 5'-TGCAGTAA ATGCACGTGTCTGCCAT-3'; Cre forward, 5'-TCGC GATTATCTTCTATATCTTCAG-3'; Cre reverse, 5'-GC TCGACCAGTTTAGTTACCC-3'.)

Anesthesia

Mice were anesthetized with Ketaminol (50 mg kg⁻¹) (Intervet International, Unterschleißheim, Germany) and Xylasol (5 mg kg⁻¹) (Dr E. Gräub, Bern, Switzerland) or Forane (isoflurane; Abbott Laboratories, Queenborough, UK).

ALI and administration of anti-TF antibody

Sedated mice were intratracheally treated with 50 μL of 0.1 M hydrochloric acid (HCl) to induce ALI.

Wild-type mice (C57BL/6J genetic background) were intraperitoneally injected once with monoclonal inhibitory rat anti-mouse TF (1H1) (20 $\mu\text{g g}^{-1}$) prior to ALI induction.

Bronchoalveolar lavage fluid (BALF) and alveolar macrophage isolation and stimulation

For quantification of cytokines and leukocytes in the bronchoalveolar space, the trachea was exposed and punctured with a vein catheter, and the bronchoalveolar space was lavaged with 1 mL of phosphate-buffered saline (PBS). Cells were pelleted for flow cytometry (600 $\times g$, 10 min), and supernatants were used for ELISA.

Alveolar macrophages were isolated by repeating lavaging (10 times), and seeded into non-tissue culture-treated plates (2 h, 37 $^{\circ}\text{C}$, and 5% CO_2 ; RPMI medium (Sigma-Aldrich, Vienna, Austria) dosed with 10% fetal bovine serum, 1% penicillin, streptomycin, and fungizone, and 1% L-glutamine) before non-adherent lymphocytes were discarded.

Alveolar macrophages were stimulated with 10 ng mL^{-1} or 100 ng mL^{-1} LPS (LPS-EB ultrapure from *Escherichia coli* O111:B4; Invivogen, Toulouse, France) for the indicated times, and supernatant or cells with peqGOLD Tri-Fast (VWR, Darmstadt, Germany) were harvested.

Bone marrow-derived macrophage (BMDM) isolation

Murine bone marrow was isolated and incubated with granulocyte-macrophage colony-stimulating factor (GM-CSF) (10 ng mL^{-1}) for 1 week to generate BMDMs, which were then stimulated with LPS (10 ng mL^{-1}) for the indicated times.

Lung homogenization for ELISA and western blotting

Lungs were homogenized in 4 μL of PBS mg^{-1} with 5-mm beads in a Precellys24 homogenizer (Bertin Technologies, Aix-en-Provence, France). Supernatants were mixed with Greenberger Lysis buffer and protease inhibitor (Roche Life Sciences, Basel, Switzerland), incubated (20 min on ice), and centrifuged (135 $\times g$, 15 min, 4 $^{\circ}\text{C}$), and the supernatant was used for ELISA.

For immunoblotting, lungs were homogenized in 10 μL of RIPA buffer mg^{-1} , and supernatants were mixed with Laemmli buffer.

RNA isolation and quantitative PCR (qPCR)

RNA was isolated from TriFast-homogenized lungs or macrophages, transcribed into cDNA (High-Capacity cDNA Reverse transcription Kit; Applied Biosystems,

Carlsbad, CA, USA), and analyzed by qPCR with Fast SYBR Green Master Mix (Applied Biosystems, Carlsbad, CA, USA) on a StepOne Real-Time PCR System (Applied Biosystems, Foster City, CA, USA). The results were evaluated according to Pfaffl [26] and expressed as fold control values. Primer sequences are supplied in Data S1.

Western blotting

Proteins were separated by SDS-PAGE (10% acrylamide gels), and semi-dry-blotted onto a poly(vinylidene difluoride) membrane. The fibrin β -monomer 59D8 and anti- β -actin (Sigma-Aldrich) and horseradish peroxidase-linked secondary antibodies were used. Immunoblots were developed with SuperSignal West Femto Maximum Sensitivity Substrate (Thermo Fisher Scientific, Waltham, MA, USA), imaged with FluorChem HD2 Chemiluminescence Imager (Alpha Innotech, San Leandro, CA, USA), and densitometrically analyzed with IMAGEJ 1.47v. Bands were normalized to β -actin.

Flow cytometry

BALF cells were incubated (20 min) with anti-CD45-PerCP, anti-F4/80-fluorescein isothiocyanate, anti-Ly6G/Ly6C-phycoerythrin, and anti-Ter119-allophycocyanin (1 : 80; BioLegend, London, UK), fixed with 1% formaldehyde, and measured by flow cytometry (BD Accuri flow cytometer with BD ACCURIC6, and FLOWJO 9 [Treestar, Ashland, OR, USA]). The following gating strategy was applied. CD45⁺ cells (leukocytes) were analyzed for F4/80 positivity (macrophages). Ly6C⁺ macrophages were termed inflammatory macrophages. CD45⁺ F4/80⁻ cells were analyzed for Ly6G expression (neutrophils).

Total cell counts of BALF were calculated by multiplying the events by

$$\left(\frac{\text{Final dilution for flowcytometer}}{\text{Measured volume}} \times \frac{\text{Resuspension volume}}{\text{Stained volume}} \right) \times \frac{\text{Injected PBS}}{\text{Recollected PBS}}$$

Histologic analysis

The left lung was extracted, fixed in 4% formaldehyde, and embedded in paraffin. Three-micrometer lung sections were stained with anti-mouse GR-1 or TF antibody, and counterstained with hematoxylin or with hematoxylin and eosin (Carl Roth, Karlsruhe, Germany). Images were obtained with an Axio Imager.Z1 microscope (Carl Zeiss, Vienna, Austria).

TF activity assay

TF activity was determined as previously described [27]. Briefly, BALF was diluted 1 : 6 with Hanks' balanced

salt solution with 0.1% bovine serum albumin (HBSA), and microvesicles were pelleted (18 000 × *g*, 20 min, 4 °C), washed, and incubated with anti-mouse TF (1H1) (100 µg mL⁻¹) or control IgG (15 min) before addition of FVII (4.88 nM), FX (150 nM), and CaCl₂ (10 mM). The reaction was stopped by addition of EDTA HBSA buffer before addition of chromogenic substrate and absorbance measurement. TF-dependent activated FX (FXa) generation was determined by subtracting FXa levels generated in the presence of TF antibody from the levels in IgG control samples.

ELISA

ELISAs were performed according to manufacturer's protocols. Myeloperoxidase (MPO), IL-33 and IL-6, and chemokine (C-X-C-motif) ligand-1 (KC), TNF-α and thrombin-antithrombin (TAT) ELISAs were purchased from eBioscience (San Diego, USA), R&D Systems (Minneapolis, MN, USA) and Siemens Healthcare Diagnostics (Vienna, Austria), respectively. Absorbance was measured at 450 nm with an EL808 Ultra Microplate Reader (Bio-Tek Instruments, Winooski, VT, USA).

Bicinchoninic acid (BCA) assay

The protein concentration in BALF was determined with a Pierce BCA Protein Assay Kit (Thermo Fisher Scientific, Waltham, MA, USA) according to the manufacturer's guidelines.

Edema formation

Murine lungs were extracted, weighed, dried at 55 °C for 48 h, and weighed again. The ratio between wet weight and dry weight was calculated.

Statistical analysis

Data were depicted as bar diagrams showing the mean ± standard error of the mean, as box plots indicating the median, the first and third quartiles, and the minimum and maximum, or as scatter plots with indicated means. The results were evaluated with GRAPHPAD PRISM 5 (GraphPad, San Diego, CA, USA) by one-way-ANOVA with Dunn's multiple comparisons test, two-way ANOVA with Sidak's multiple comparisons test, unpaired, two-tailed *t*-tests, or the Mann-Whitney test, if the samples did not pass the Kolmogorov-Smirnov test for normal distribution. A *P*-value of < 0.05 was considered to be significant.

Results

TF expression during acid-induced ALI

Activation of coagulation is an integral step in the pathology of ALI. We established a mouse model of

acid-induced ALI by intratracheal administration of HCl. Lung TF mRNA expression was increased within the first 8 h of ALI, which represents the most critical time in the pathology (Fig. 1A), whereas we could not detect simultaneous accumulation of fibrin β-monomers in lungs (Fig. 1B–D). This indicates rather modest activation of coagulation during acid-induced ALI. To investigate the role of TF in acid-induced ALI, we used mice with a cell type-specific TF deficiency (Fig. S1) either in myeloid cells (TF^{Δmye}) or in lung epithelial cells (TF^{Δepi}) in littermate-controlled experiments. We found a significant increase in TF mRNA expression in TF^{Δmye} mice during ALI, which was significantly more pronounced than in wild-type mice (Fig. 1E). This indicates that non-myeloid cells upregulate TF during ALI. As fibrin generation was only moderately affected during ALI, we used thrombin, the protease-cleaving fibrinogen, as a functional readout for coagulation activation. Formed thrombin becomes rapidly inactivated via binding of antithrombin III, leading to the formation of TAT complexes. However, we found only modest TAT complex upregulation in BALF 8 h after ALI, perhaps because of low FVII and FX BALF levels. TAT complex formation only tends to be increased in TF^{Δmye} mice (Fig. 1F). *In vitro*, we confirmed TF deletion at the mRNA level in alveolar macrophages with and without LPS stimulation (Fig. 1G).

TF on myeloid cells negatively regulates leukocyte recruitment during acid-induced ALI

One of the most prominent features of ALI is leukocyte influx, in particular of neutrophils, into the bronchoalveolar compartment. As we observed only a minor impact of TF induction on coagulation, we investigated whether upregulated TF could influence inflammation during ALI. Acid-induced ALI led to significantly enhanced leukocyte extravasation in TF^{Δmye} mice as compared with wild-type littermates after 8 h, as evidenced by increased CD45⁺ leukocyte numbers (Fig. 2A). We further identified CD45⁺ F4/80⁻ Ly6G⁺ cells, representing neutrophils, as strongly contributing to increased cellular influx. Significantly more neutrophils migrated into the bronchoalveolar compartment in TF^{Δmye} mice 8 h after acid-induced ALI (Fig. 2B). To verify that the majority of neutrophils transmigrated through the interstitial barrier, we stained lung sections for the neutrophil marker GR-1 (brown staining, arrows), which recognizes both neutrophils and, to a lesser extent, activated macrophages. We observed that most of the neutrophils were present within the alveoli, and that only a subfraction were present in interstitial layers (Fig. 2C). Furthermore, leukocyte accumulation and lung damage in TF^{Δmye} mice were slightly increased as compared with wild-type mice (Fig. 2D). In contrast, flow cytometric analysis of macrophage subsets characterized by either F4/80⁺ (Fig. 2E; Fig. S2A) or F4/80⁺ CD11c⁺ (Fig. S2B) revealed no difference between TF^{Δmye} mice

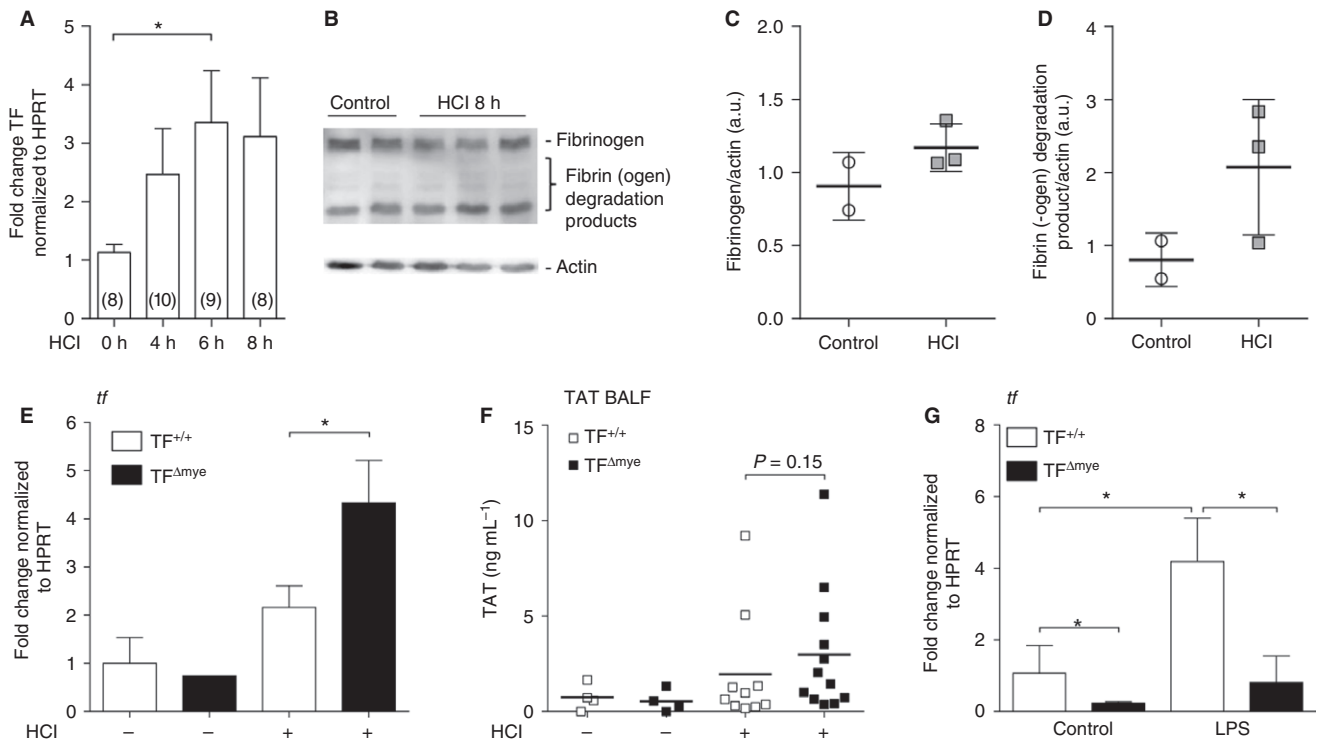


Fig. 1. Tissue factor (TF) expression and activation of coagulation during acute lung injury (ALI). (A) TF mRNA expression in lungs of wild-type mice after HCl-induced ALI was determined by qPCR at the indicated time points. Data show fold control (0 h) values normalized to hypoxanthine guanine phosphoribosyl transferase (HPRT); numbers are shown in parentheses. (B) Western blot analysis for fibrin- β of homogenized lung samples 8 h after HCl treatment ($n = 3$) and of controls ($n = 2$); actin was used as a loading control. (C, D) Western blot densitometric analysis of (C) fibrinogen and (D) the major fibrin(ogen) degradation product. (E) TF mRNA expression in total lung tissue of control ($n_{TF^{+/+}} = 2$; $n_{TF^{\Delta mye}} = 1$) and HCl-treated ($n_{TF^{+/+}} = 9$; $n_{TF^{\Delta mye}} = 4$) myeloid TF-deficient ($TF^{\Delta mye}$) or wild-type ($TF^{+/+}$) mice was analyzed by q-PCR 8 h after treatment. (F) Thrombin-antithrombin (TAT) complexes in the bronchoalveolar lavage fluid (BALF) of control ($n = 4$) and HCl-treated ($n_{TF^{+/+}} = 10$; $n_{TF^{\Delta mye}} = 12$) wild-type or myeloid TF-deficient mice 8 h after treatment. (G) TF mRNA expression of alveolar macrophages, isolated from lungs of myeloid TF knock-out mice and wild-type littermates and stimulated with lipopolysaccharide (LPS) (100 ng mL^{-1}) *in vitro* for 3 h; $n = 5$. For statistical analysis, one-way-ANOVA with Dunn's multiple comparisons test (A), unpaired Student's *t*-tests (E, F) or the Mann-Whitney test (G) were performed; * $P < 0.05$. Littermate-controlled experiments were performed. a.u., arbitrary units.

and wild-type littermates. Only inflammatory macrophages (Fig. 2F), characterized by F4/80⁺ and Ly6C⁺ [28,29], were marginally, but not significantly ($P = 0.09$), increased in number. To analyze the specificity of this phenomenon, we applied a leukocyte recruitment model to $TF^{\Delta mye}$ and wild-type mice. To this end, we induced thioglycollate-elicited sterile inflammation, and analyzed leukocyte influx in an early phase (4 h) and a late phase (72 h). However, no differences in infiltrating leukocytes, macrophages or neutrophils were observed, perhaps because of the strong inflammatory stimulus (Fig. S3A–D). *In vitro* analysis of alveolar macrophages revealed that, in response to LPS, TF deficiency increased the release of the chemokine KC, which primarily attracts neutrophils (Fig. 2G). These data may indicate that myeloid TF plays a lung-specific role in regulating leukocyte alveolar trafficking.

TF dampens the inflammatory response in acid-induced ALI

Another hallmark of acid-induced ALI is the induction of an inflammatory response, which is usually triggered by

endogenous alarmins or DAMPs, owing to cellular damage. DAMPs include nuclear components such as histones or high-mobility group box 1, but also IL-33 [30]. We observed a strong increase in the release of IL-33 into the bronchoalveolar compartment in response to ALI, but no differences between $TF^{\Delta mye}$ and wild-type littermate mice (Fig. 3A). Although granulocyte numbers in $TF^{\Delta mye}$ mice (Fig. 2B) were markedly increased, we found only a slight trend for increased MPO levels in BALF and lung homogenates in $TF^{\Delta mye}$ mice (Fig. 3B). However, analysis of total protein in BALF revealed an increased protein content in $TF^{\Delta mye}$ mice subjected to acid-induced ALI as compared with wild-type mice (Fig. 3C). This finding points towards increased vascular leakage and loss of alveolar-capillary barrier function in the lungs of $TF^{\Delta mye}$ mice. Next, we measured the level of pulmonary IL-6 of acid-treated mice, which we considered to be the most robust marker for inflammation in this rather mild inflammatory model. We observed significantly increased IL-6 production and release in BALF and total lung after acid-induced ALI in $TF^{\Delta mye}$ mice as compared with

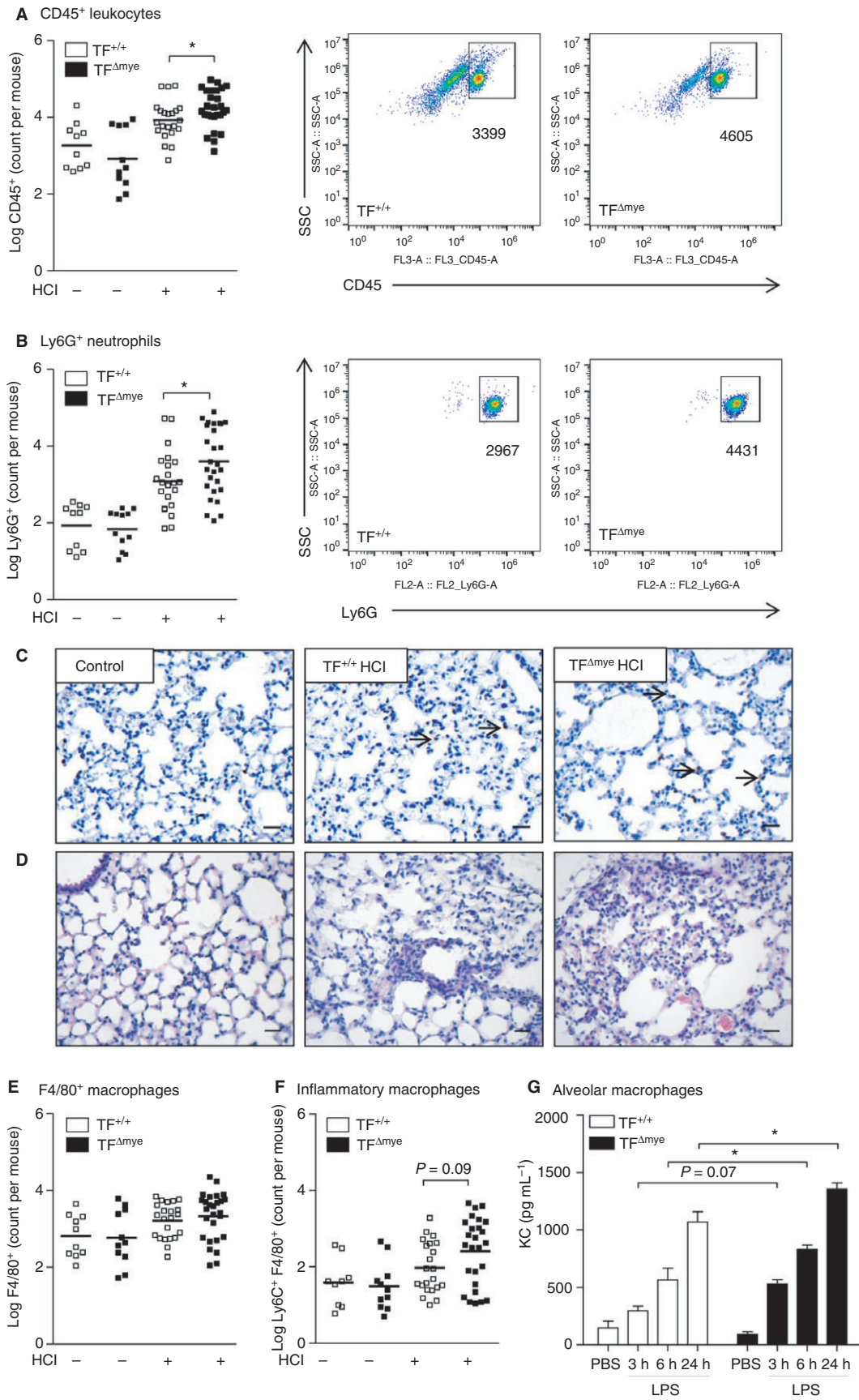


Fig. 2. The effect of myeloid tissue factor (TF) on pulmonary leukocyte recruitment during acute lung injury (ALI). (A, B, E, F) Flow cytometric analysis of leukocytes in the bronchoalveolar lavage fluid of control mice ($n_{TF^{+/+}} = 10$; $n_{TF^{\Delta mye}} = 11$) and HCl-treated ($n_{TF^{+/+}} = 22$; $n_{TF^{\Delta mye}} = 27$) myeloid TF-deficient mice or wild-type mice 8 h after ALI. (A) CD45⁺ leukocytes. (B) CD45⁺ Ly6G⁺ F4/80⁻ neutrophils. (E) CD45⁺ F4/80⁺ macrophages. (F) CD45⁺ Ly6C⁺ F4/80⁺ inflammatory macrophages ($n_{control\ TF^{+/+}} = 9$; $n_{control\ TF^{\Delta mye}} = 11$; $n_{HCl\ TF^{+/+}} = 21$; $n_{HCl\ TF^{\Delta mye}} = 26$). (A, B) Representative blots of HCl-treated mice. (C, D) Lung sections of myeloid TF-deficient mice or wild-type mice 8 h after ALI induction stained for GR-1 and hematoxylin (C) or hematoxylin and eosin (D). Scale bar: 25 μ m. Magnification: $\times 200$. Arrows indicate neutrophils. (G) Alveolar macrophages were stimulated with lipopolysaccharide (LPS) for the indicated time points *in vitro*, and released chemokine (C-X-C-motif) ligand-1 (KC) was measured by ELISA; $n = 3$. For statistical analysis (A–F), unpaired Student's *t*-tests and (G) two-way ANOVA with Sidak's multiple comparison were performed; $*P < 0.05$. Littermate-controlled experiments were performed. PBS, phosphate-buffered saline. [Color figure can be viewed at wileyonlinelibrary.com]

wild-type mice (Fig. 3D,E). However, pulmonary IL-1 β and IL-12 p40 levels were unaltered (Fig. S4A,B).

TF dampens the inflammatory response of macrophages *in vitro*

To determine the possible source of increased IL-6 levels in HCl-treated $TF^{\Delta mye}$ mice and the impact of myeloid TF on inflammatory responses of macrophages, we isolated alveolar macrophages from naive $TF^{\Delta mye}$ mice and

wild-type littermates. Analysis of IL-6 at the mRNA and protein levels revealed a significant increase in IL-6 mRNA 3 h after LPS stimulation (Fig. 4A,B). Moreover, TNF- α mRNA and protein levels were significantly increased 3 h after LPS treatment (Fig. 4C,D). As alveolar macrophages are very limited in number, and their development depends on GM-CSF [31], we also used GM-CSF-induced BMDMs. LPS-stimulated TF-deficient BMDMs expressed similar levels of IL-6 mRNA and protein (Fig. 4E,F); however, TNF- α secretion was

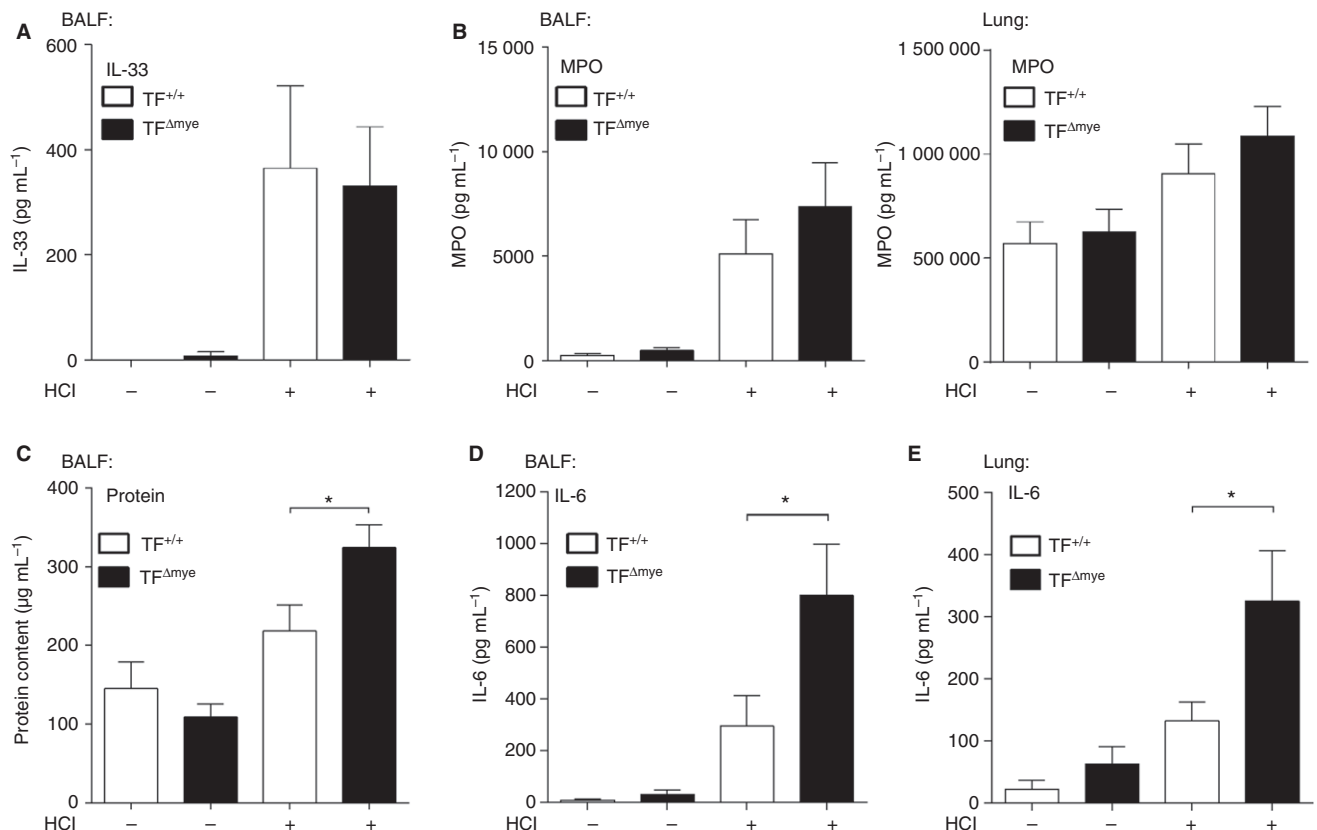
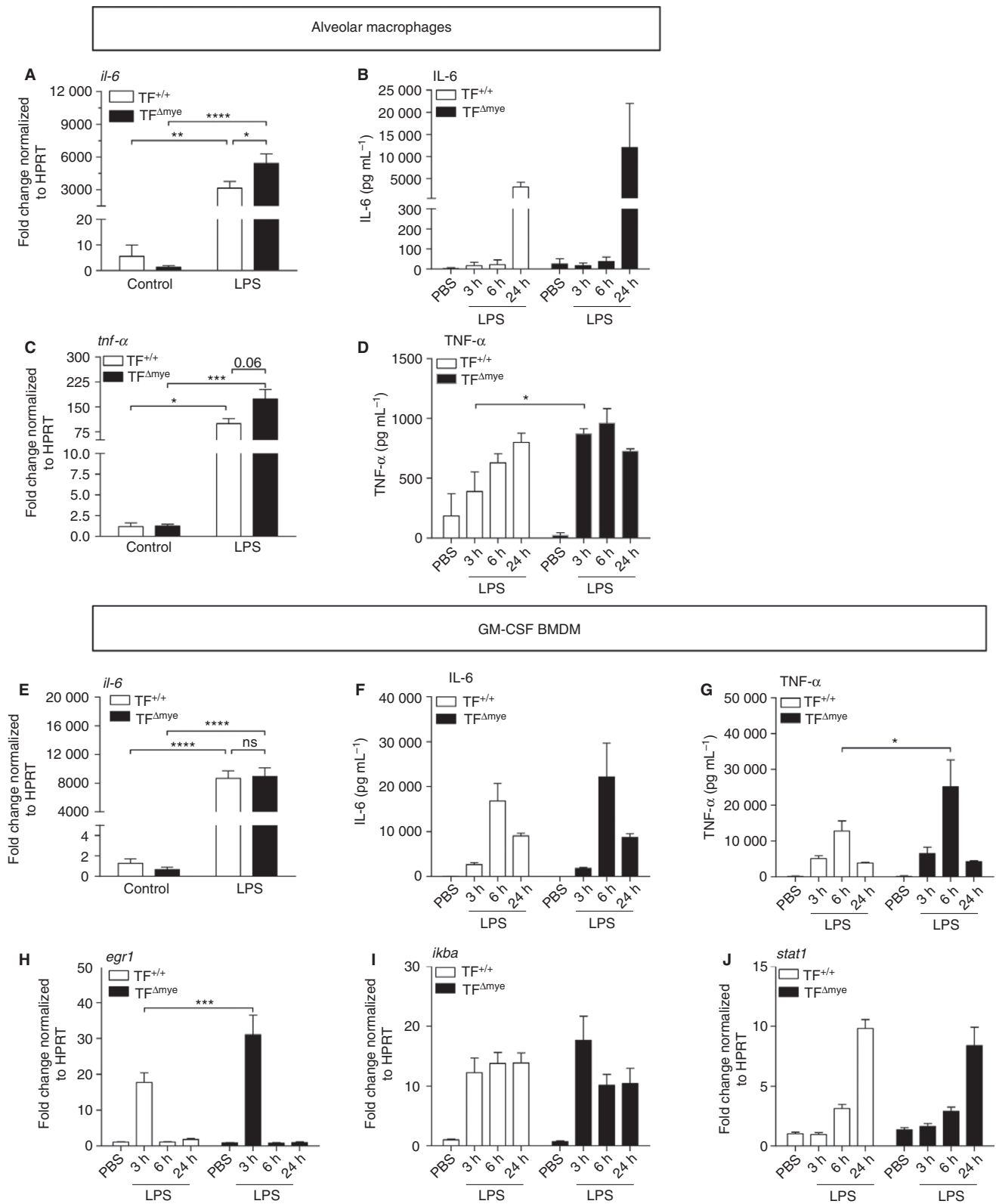


Fig. 3. Increased inflammation in myeloid tissue factor (TF)-deficient mice in response to acid-induced acute lung injury (ALI). (A–D) Interleukin (IL)-33 (A) ($n_{control\ TF^{+/+}} = 6$, $n_{control\ TF^{\Delta mye}} = 5$, $n_{HCl\ TF^{+/+}} = 7$, $n_{HCl\ TF^{\Delta mye}} = 8$), myeloperoxidase (MPO) (B) (bronchoalveolar lavage fluid [BALF] – $n_{control\ TF^{+/+}} = 6$, $n_{control\ TF^{\Delta mye}} = 4$, $n_{HCl\ TF^{+/+}} = 11$, $n_{HCl\ TF^{\Delta mye}} = 12$; lung – $n_{control\ TF^{+/+}} = 5$, $n_{control\ TF^{\Delta mye}} = 5$, $n_{HCl\ TF^{+/+}} = 14$, $n_{HCl\ TF^{\Delta mye}} = 14$) and IL-6 (D) ($n_{control\ TF^{+/+}} = 6$, $n_{control\ TF^{\Delta mye}} = 5$, $n_{HCl\ TF^{+/+}} = 10$, $n_{HCl\ TF^{\Delta mye}} = 12$) were measured in BALF by ELISA. (C) The protein content in BALF was measured with a bicinchoninic acid protein assay ($n_{control\ TF^{+/+}} = 3$, $n_{control\ TF^{\Delta mye}} = 3$, $n_{HCl\ TF^{+/+}} = 7$, $n_{HCl\ TF^{\Delta mye}} = 10$). (E) IL-6 levels in total lung tissue were determined by ELISA ($n_{control\ TF^{+/+}} = 7$, $n_{control\ TF^{\Delta mye}} = 8$; $n_{HCl\ TF^{+/+}} = 11$, $n_{HCl\ TF^{\Delta mye}} = 13$). Parameters were analyzed 8 h after HCl treatment. For statistical analysis, unpaired Student's *t*-tests (A–E) were performed; $*P < 0.05$. Littermate-controlled experiments were performed.



significantly increased (Fig. 4G). To identify potential signaling pathways affected by TF, we analyzed the expression of EGR1, IκBα, and STAT1. We found that TF significantly reduced the expression of EGR1 1 h after

LPS stimulation, whereas IκBα and STAT1 were similarly expressed (Fig. 4H–J), indicating that the mitogen-activated kinase pathway was primarily affected, rather than the interferon and NF-κB pathways.

Fig. 4. Myeloid tissue factor (TF) deficiency promotes a proinflammatory phenotype of alveolar and bone marrow-derived macrophages (BMDMs). (A–D) Alveolar macrophages of $TF^{\Delta myc}$ and $TF^{+/+}$ mice were isolated and stimulated with lipopolysaccharide (LPS) (10 ng mL^{-1}) or vehicle for the indicated time points. Interleukin (IL)-6 (A) ($n = 5$) and tumor necrosis factor (TNF)- α (C) ($n = 3$) mRNA expression in isolated alveolar macrophages, stimulated with LPS or vehicle for 3 h were determined by qPCR. Data are depicted as fold $TF^{+/+}$ control. (B, D) IL-6 (B) and TNF- α (D) protein levels in supernatants of alveolar macrophages were measured by ELISA at the indicated time points after LPS stimulation; $n = 3$. (E–J) Bone marrow cells of $TF^{\Delta myc}$ and $TF^{+/+}$ mice were differentiated towards macrophages by granulocyte-macrophage colony-stimulating factor (GM-CSF) (10 ng mL^{-1}) and stimulated with LPS (10 ng mL^{-1}) or vehicle at the indicated time points. (E) IL-6 mRNA ($n_{\text{control } TF^{+/+}} = 5$; all others $n = 6$) expression 3 h after stimulation was quantified by qPCR, and the data are depicted as fold $TF^{+/+}$ control. (F) IL-6 ($n_{6 \text{ h}} = 4$; all others $n = 6$). (G) TNF- α ($n = 6$) levels in supernatants were determined by ELISA. (H–J) EGR1 (H) ($n = 5$ –6), I κ B α (I) ($n = 5$ –6) and STAT1 (J) ($n = 5$ –6) were measured by qPCR, and are depicted as fold $TF^{+/+}$ control. For statistical analysis, two-way ANOVA with Sidak's multiple comparison was performed; * $P < 0.05$, ** $P < 0.01$, *** $P < 0.001$, **** $P < 0.0001$. Littermate-controlled experiments were performed. HPRT, hypoxanthine guanine phosphoribosyl transferase; NS, not significant; PBS, phosphate-buffered saline.

As TF activity leads to activated FVII (FVIIa) and thrombin generation, we examined the effects of 3 h of human FVIIa and thrombin stimulation on wild-type BMDMs. We found that concomitant stimulation with LPS and thrombin significantly reduced the expression of IL-6 and tended to decrease the expression of TNF- α and I κ B α (Fig. S5A–C). Similarly, FVIIa showed a tendency to reduce IL-6 levels and, to a lesser extent, TNF- α and I κ B α mRNA levels (Fig. S5D–F). However, *in vivo*, other mechanisms, such as the intrinsic coagulation cascade, can also contribute to thrombin generation. Moreover, TF can directly signal and thereby modulate macrophage functions.

These results indicate that the differential expression of proinflammatory cytokines during ALI is probably dependent on TF surface expression on innate immune cells.

TF on epithelial cells does not contribute to tissue inflammation 8 h after acid-induced ALI

To determine the contribution of lung epithelial TF to the pathophysiology of acid-induced ALI, we used $TF^{\Delta epi}$ mice. We used immunostaining to confirm that there was appropriate TF deficiency in the lungs of $TF^{\Delta epi}$ mice [18] (Fig. S1B). Analysis of TF mRNA expression in whole lung tissue during ALI revealed a trend for increased TF expression 8 h after acid instillation in wild-type mice. In contrast, TF mRNA levels were strongly reduced in $TF^{\Delta epi}$ mice (Fig. 5A), indicating that epithelial cells express the majority of lung TF mRNA during ALI. The SPC cre efficiently targets TF expression in most of the lung epithelial cells [32]. Moreover, upon LPS-induced ALI, lung epithelial cells represent the major TF-expressing cell type responsible for protection of alveolar-capillary integrity [18]. Hence, we wanted to determine whether this is also the case during acid-induced ALI. Measurement of TF activity revealed slightly increased FXa generation and TAT complex formation 8 h after disease induction in wild-type littermates. In comparison, $TF^{\Delta epi}$ mice showed a trend for reduced FXa generation but no differences in TAT complex formation (Fig. 5B,C). Next, we tested endothelial and epithelial barrier function by measuring BALF protein levels. Surprisingly, we did not observe significant differences in BALF protein levels and

edema formation between acid-treated $TF^{\Delta epi}$ mice and wild-type mice (Fig. 5D,E). Similarly, we did not observe alterations in erythrocyte levels in BALF (Fig. 5J). To test the inflammatory response, we measured pulmonary IL-6 mRNA expression and IL-6 protein levels in BALF and lung tissue, and pulmonary neutrophil transmigration, but did not detect any differences between acid-treated $TF^{\Delta epi}$ mice and wild-type littermates (Fig. 5F–I).

Restoration of tissue integrity is disturbed at late stages of acid-induced ALI in $TF^{\Delta epi}$ mice but not in $TF^{\Delta myc}$ mice

The current literature on TF in ALI pathogenesis is focused on early responses in disease progression. Therefore, we aimed to elucidate the effects of TF deletion at late stages of ALI. Twenty-four hours after acid treatment, the initial injury and inflammation in wild-type mice had resolved. Extravasation of leukocytes, including neutrophils and macrophages, as well as erythrocytes and protein infiltrates, returned to baseline levels (Fig. 6A–H). Surprisingly, we observed increased leukocyte counts in the bronchoalveolar compartment in $TF^{\Delta epi}$ mice as compared with wild-type littermates at this time point, suggesting that $TF^{\Delta epi}$ mice were unable to completely resolve the mild acid-induced injury (Fig. 6A). Notably, most of this increase could be attributed to macrophages, and not to neutrophils (Fig. 6B,C). In contrast, $TF^{\Delta myc}$ mice did not show any overt pulmonary inflammation 24 h after ALI induction, as indicated by baseline levels of leukocytes, macrophages and neutrophils in BALF (Fig. 6D–F). Similarly, we found significantly more erythrocytes in HCl-treated $TF^{\Delta epi}$ mice and a trend for more protein in the BALF (Fig. 6G), whereas $TF^{\Delta myc}$ mice and wild-type mice did not show increased levels in comparison with untreated mice (Fig. 6H). Edema formation was still slightly increased in all four HCl-treated groups, but no differences between genotypes were observed (Fig. 6I,J).

Systemic TF targeting by antibody does not affect inflammation but increases the risk of bleeding during acid-induced ALI

To elucidate a possible systemic role of TF in the progression of acid-induced ALI, we administered the TF-

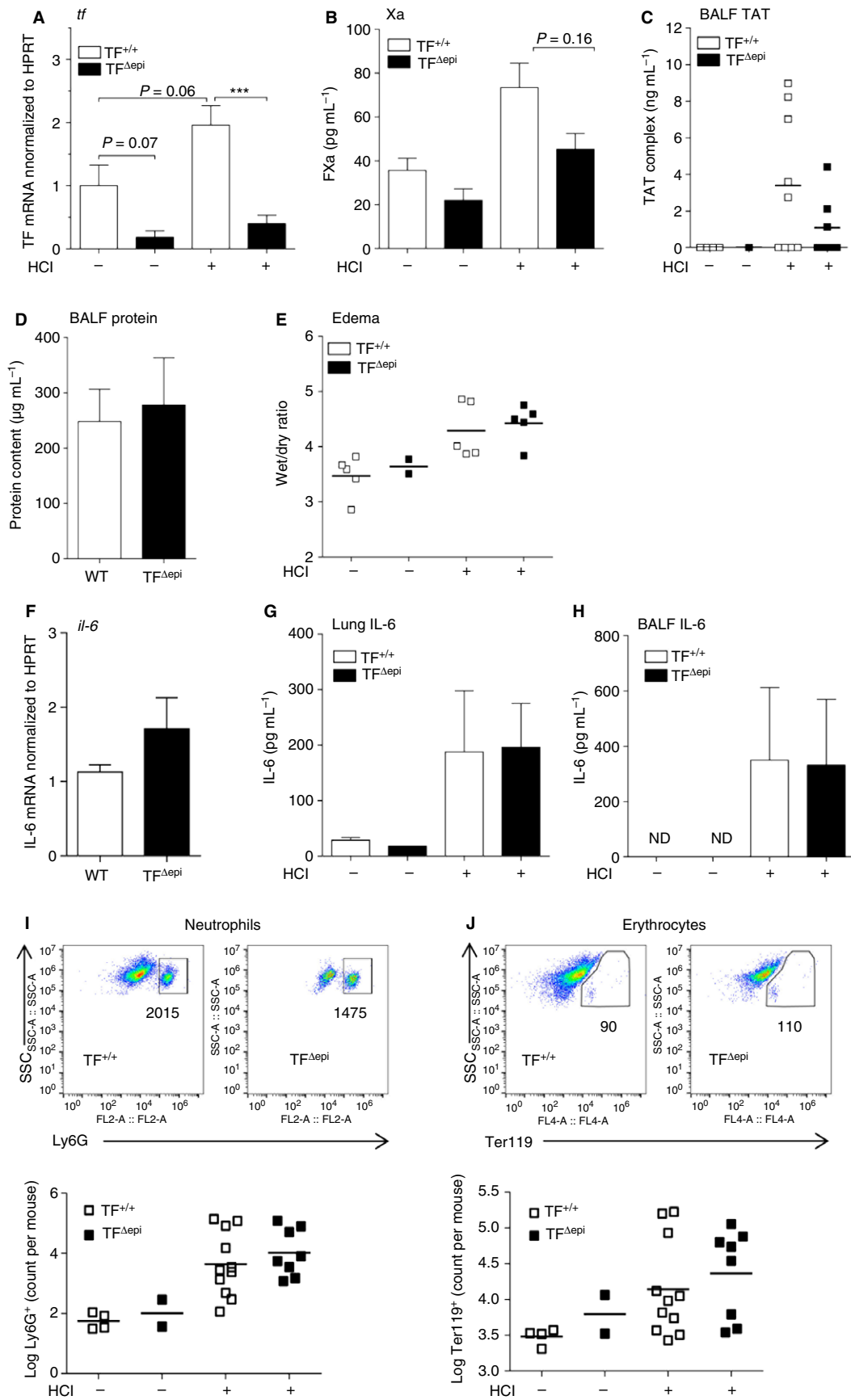


Fig. 5. Epithelial tissue factor (TF) plays a minor role in acid-induced acute lung injury (ALI). Epithelial TF-deficient and wild-type (WT) mice were treated with HCl for 8 h. (A) TF mRNA expression of lung tissue was determined by qPCR, and is depicted as fold wild-type control ($n_{\text{control TF}+/+} = 5$; $n_{\text{control TF}\Delta\text{mye}} = 3$; $n_{\text{HCl TF}+/+} = 9$; $n_{\text{HCl TF}\Delta\text{mye}} = 10$). (B, C) Activated factor X (FXa) generation (B) ($n_{\text{control TF}+/+} = 4$; $n_{\text{control TF}\Delta\text{mye}} = 2$; $n_{\text{HCl TF}+/+} = 6$; $n_{\text{HCl TF}\Delta\text{mye}} = 4$) and thrombin–antithrombin (TAT) complex (C) were measured in bronchoalveolar lavage fluid (BALF) ($n_{\text{control TF}+/+} = 4$; $n_{\text{control TF}\Delta\text{mye}} = 1$; $n_{\text{HCl TF}+/+} = 9$; $n_{\text{HCl TF}\Delta\text{mye}} = 7$). (D) Protein content in BALF samples ($n_{\text{control TF}+/+} = 4$; $n_{\text{control TF}\Delta\text{mye}} = 2$; $n_{\text{HCl TF}+/+} = 10$; $n_{\text{HCl TF}\Delta\text{mye}} = 6$). (E) Lung edema was determined by measuring the weight ratio of wet and dried whole lung tissue ($n_{\text{control TF}\Delta\text{mye}} = 2$; all others $n = 5$) (F–H) IL-6 mRNA expression (F) ($n_{\text{control}} = 4$; $n_{\text{HCl TF}+/+} = 5$; $n_{\text{HCl TF}\Delta\text{mye}} = 8$) and IL-6 protein levels in (G) total lung tissue ($n_{\text{control TF}\Delta\text{mye}} = 1$; all others $n = 4$) and (H) BALF ($n_{\text{control TF}+/+} = 4$; $n_{\text{control TF}\Delta\text{mye}} = 1$; $n_{\text{HCl TF}+/+} = 6$; $n_{\text{HCl TF}\Delta\text{mye}} = 3$). (I, J) Flow cytometric analysis of (I) neutrophils (CD45⁺ Ly6G⁺ F4/80⁻) and (J) erythrocytes (Ter119⁺) in the BALF of epithelial TF-deficient and WT mice ($n_{\text{control TF}+/+} = 4$; $n_{\text{control TF}\Delta\text{mye}} = 2$; $n_{\text{HCl TF}+/+} = 11$; $n_{\text{HCl TF}\Delta\text{mye}} = 8$). For statistical analysis, the Mann–Whitney test was performed (A, B); *** $P < 0.001$. Littermate-controlled experiments were performed. HPRT, hypoxanthine guanine phosphoribosyl transferase; ND, not detectable. [Color figure can be viewed at wileyonlinelibrary.com]

blocking antibody 1H1 intraperitoneally in C57BL/6J littermates [33]. We observed no adverse events such as fatal bleeding during the 8-h observation period after intratracheal acid instillation. When we analyzed ALI-induced leukocyte influx in BALF, we found no differences for CD45⁺ leukocytes, Ly6G⁺ neutrophils, or F4/80⁺ macrophages (Fig. 7A–C). In contrast to what was seen in cell type-specific TF-deficient mice, systemic blockade of TF led to a significant increase in erythrocyte numbers in BALF (Fig. 7D), indicating that TF is required to maintain bronchoalveolar barrier function. Accordingly, we did not observe gross changes in IL-6 (Fig. 7E) or KC (Fig. 7F) levels.

Discussion

TF and the extrinsic coagulation cascade are intricately involved in the disease mechanisms underlying ALI. For instance, exacerbated fibrin deposition is detrimental to the function of the alveolar–capillary system by causing barrier dysfunction and hampering gas exchange [34]. We found that myeloid TF deficiency exacerbated the pathology of acid-induced ALI. Surprisingly, TF deficiency of lung epithelial cells resulted in an unusually long-lasting (24 h) disease pathology of acid-induced ALI, accompanied by modest intra-alveolar hemorrhage. This is in line with previous findings showing that epithelial TF exerts protective effects, e.g. supporting the alveolar–capillary barrier, in various infectious and non-infectious ALI models [18,35,36]. For instance, in an LPS-induced lung inflammation model, the presence of epithelial cell TF determines the severity of the lung pathology [18,33]. Whereas, in LPS-induced ALI, myeloid TF is of minor importance [36], we provide evidence that, in acid-induced ALI, deficiency of myeloid TF promoted the inflammatory response and thereby significantly exacerbated disease progression. Increased inflammation may be the reason for increased TF expression in whole lung tissue, as observed in TF^{Δmye} mice as compared with wild-type mice during ALI. Previous studies have indicated that the effect of myeloid TF depends significantly on the disease model. Whereas, in low-TF mice, bacterial burden and cytokine release were unaltered as compared with

wild-type mice during tuberculosis [37], myeloid TF deficiency augmented the pulmonary growth of *Mycobacterium tuberculosis*, most likely because of reduced fibrin generation and shifting macrophage polarization [38].

Such disease model-dependent differences could explain our observations regarding the role of myeloid TF in ALI. In contrast to LPS-induced ALI, which induces apoptosis in epithelial and endothelial cells [39,40], acid-induced ALI creates a direct cell-damaging disease pattern. Intratracheal instillation of HCl mainly affects epithelial cells, leading to impaired epithelial cell function and fluid transport, and indirect damage to the capillaries [41]. Epithelial cell injury was also exemplified by damage-associated release of IL-33 into the bronchoalveolar space. IL-33 is abundantly expressed in lung epithelial cells [42]. However, we did not observe any differences in IL-33 levels in BALF between TF^{Δmye} mice and wild-type mice, indicating comparable initial insults by acid aspiration in both groups. However, during acid-induced ALI, TF^{Δmye} mice showed increased pulmonary TF expression, indicating enhanced activation of non-hematopoietic cells, e.g. type I and type II lung epithelial cells, upon acid injury. The most apparent differences in inflammation were significant increases in proinflammatory IL-6 levels and leukocyte/neutrophil influx. These occurred independently of coagulation activation or the presence of TF on epithelial cells, and was solely dependent on myeloid TF. Although there was a tendency for there to be increased cytokine expression in TF^{Δmye} mice during LPS-induced ALI, no significant differences were observed [36].

In line with elevated cytokine levels, we also observed increased recruitment of leukocytes into the bronchoalveolar space of TF^{Δmye} mice, comprising inflammatory macrophages and, particularly, neutrophils; however, total MPO levels were only slightly increased. These findings indicate that, although coagulation is not affected by the lack of TF on myeloid cells and, in particular, on alveolar macrophages, the proinflammatory environment created by acid-induced ALI further substantiates the damage. This idea is supported by the significant upregulation of proinflammatory cytokines, e.g. IL-6, by isolated TF-deficient alveolar macrophages upon LPS stimulation *in vitro*.

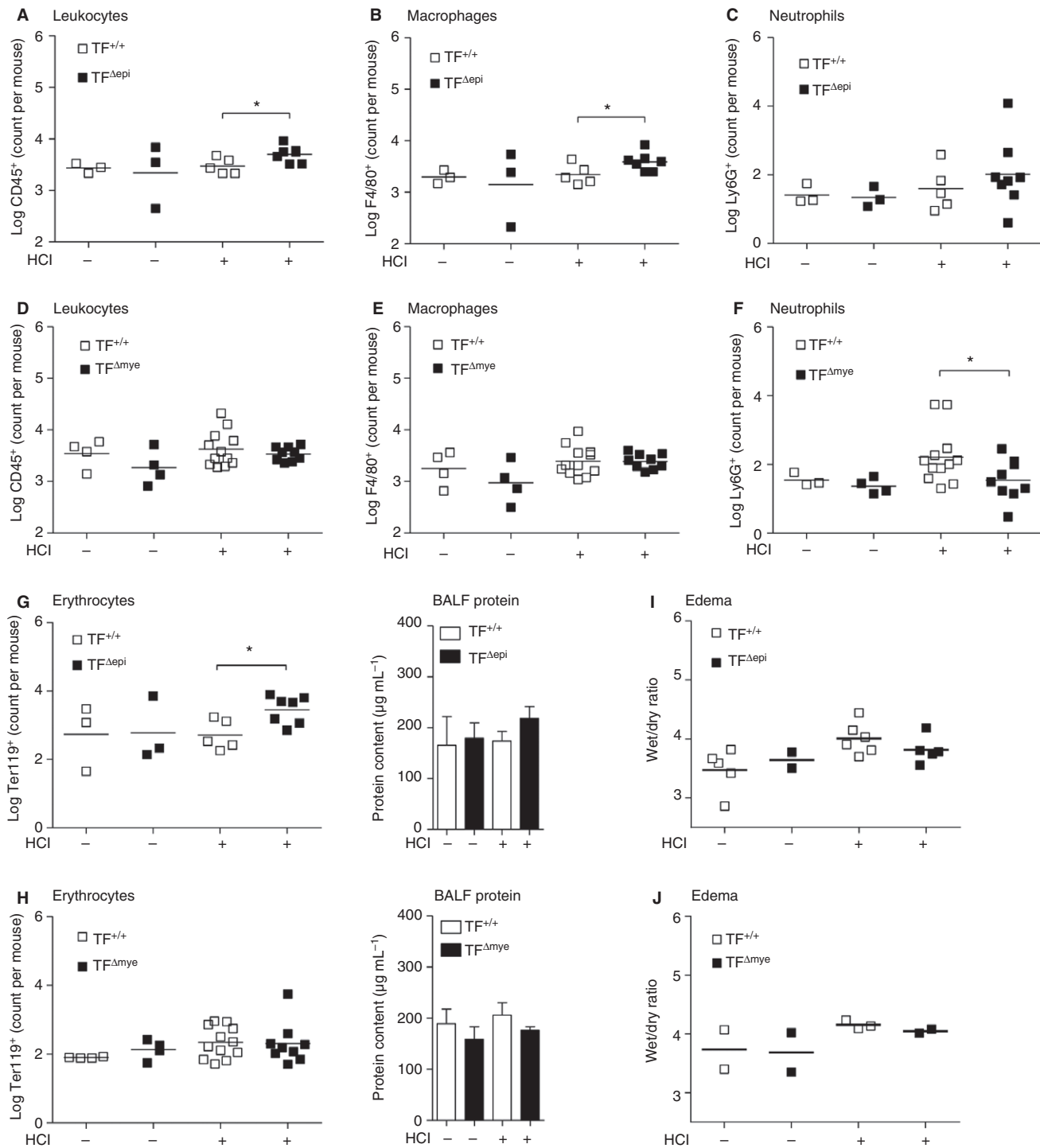


Fig. 6. Leukocyte extravasation into the lung 24 h after HCl-induced acute lung injury (ALI) in epithelial and myeloid tissue factor (TF)-deficient mice. The presence of (A, D) leukocytes (CD45⁺), (B, E) macrophages (CD45⁺ F4/80⁺), (C, F) neutrophils (CD45⁺ Ly6G⁺ F4/80⁻) and (G, H) erythrocytes (Ter119⁺) in the bronchoalveolar lavage fluid (BALF) was determined by flow cytometry. (I, J) BALF protein was measured with a bicinchoninic acid assay. (A–C, G) $n_{\text{control}} = 2\text{--}3$; $n_{\text{HCl TF}^{+/+}} = 5$; $n_{\text{HCl TF}^{\Delta\text{epi}}} = 7\text{--}8$. (D–F, H) $n_{\text{control}} = 3\text{--}4$; $n_{\text{HCl TF}^{+/+}} = 12$; $n_{\text{HCl TF}^{\Delta\text{mye}}} = 9$. (I) $n_{\text{control TF}^{+/+}} = 5$; $n_{\text{control TF}^{\Delta\text{epi}}} = 2$; $n_{\text{HCl TF}^{+/+}} = 6$; $n_{\text{HCl TF}^{\Delta\text{epi}}} = 5$. (J) $n = 2\text{--}3$. For statistical analysis, unpaired Student's *t*-tests were performed; * $P < 0.05$. Littermate-controlled experiments were performed.

However, neutrophils can also upregulate TF expression during inflammation [5,43]. Infection with influenza virus A/H1N1 induces TF expression on various cell

types, including neutrophils [44]. Thus, we cannot exclude the possibility that lack of TF on neutrophils contributes to the observed phenotype during ALI.

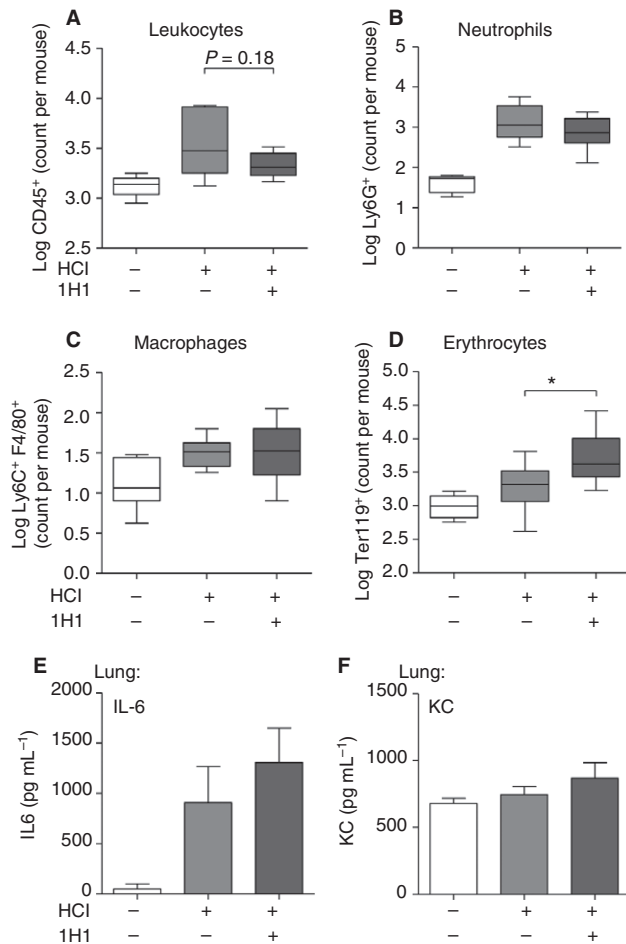


Fig. 7. Systemic tissue factor (TF) inhibition in acid-induced acute lung injury (ALI). Wild-type mice were intraperitoneally injected with anti-TF blocking antibody (1H1) or vehicle prior to HCl treatment, and parameters were analyzed 8 h after HCl treatment. (A–D) Extravasation of (A) leukocytes (CD45⁺), (B) neutrophils (CD45⁺ Ly6G⁺ F4/80⁺), (C) macrophages (CD45⁺ F4/80⁺) and (D) erythrocytes (Ter119⁺) in the bronchoalveolar lavage fluid (BALF) was determined by flow cytometry. (E, F) Interleukin (IL)-6 (E) and chemokine (C-X-C-motif) ligand-1 (KC) (F) levels in BALF were determined by ELISA. (A) $n_{\text{control WT}} = 5$; $n_{\text{HCl WT}} = 12$; $n_{\text{HCl 1H1}} = 9$. (B) $n_{\text{control WT}} = 5$; $n_{\text{HCl WT}} = 8$; $n_{\text{HCl 1H1}} = 8$. (C) $n_{\text{control WT}} = 7$; $n_{\text{HCl WT}} = 8$; $n_{\text{HCl 1H1}} = 8$. (D) $n_{\text{control WT}} = 7$; $n_{\text{HCl WT}} = 10$; $n_{\text{HCl 1H1}} = 10$. (E, F) $n_{\text{control WT}} = 3$; $n_{\text{HCl WT}} = 6$; $n_{\text{HCl 1H1}} = 6$. For statistical analysis, unpaired Student's *t*-tests were performed; * $P < 0.05$. Littermate-controlled experiments were performed.

TF upregulation during ALI results not only in a mild hypercoagulable state but also in an inflammatory state, as FVIIa, FXa, and activated FII can activate protease-activated receptors, which induce the expression of various cytokines [45]. However, we provide evidence that myeloid TF itself dampens inflammatory reactions via downregulation of macrophage IL-6 expression. Our data indicate that there is TF cell type-specific and disease-specific regulation of inflammatory responses, suggesting that TF acts as a double-edged sword in the cross-talk between inflammation and coagulation.

Taking our findings together, we conclude that myeloid TF has roles in addition to activating the extrinsic coagulation cascade, as TF clearly shows immunomodulatory potential. Thus, myeloid TF may potently regulate the intensity of inflammatory responses to exogenous lung insults such as that caused by gastric contents.

Addendum

J. B. Kral-Pointner designed and performed experiments, analyzed the results, and wrote the manuscript. W. C. Schrottmaier and V. Horvath planned and performed research, and analyzed the data. H. Datler was involved in data collection and animal experiments. C. Ay, B. Niederreiter, and L. Hell were involved in data collection. N. Mackman provided conditional knockout mice and supervised the study. B. Jilma and J. A. Schmid were involved in interpreting and discussing the results. A. Assinger and S. Knapp participated in study design and contributed to the discussion and interpretation of the data. G. Schabbauer designed the study, was involved in result interpretation and discussion of the research progress, and wrote the manuscript. All authors confirm that they had full access to the data and the manuscript; they revised its intellectual content and approved the final version.

Acknowledgements

We thank H. Paar, B. Birnecker, and A. Knöbl for their excellent technical assistance. Floxed TF mice crossbred with LysMcre and SPC cre mice were a kind gift from N. Mackman. We wish to thank C. T. Esmon for kindly providing the fibrin β -monomer-specific antibody 59D8, C. Binder and M. Schwameis for fruitful discussions, and J. S. Brunner, L. Hanzl, and T. Afonyushkin for excellent technical advice. The study was supported by the Austrian Science Fund FWF with the projects FWF-SFB 54 and FWF-P24978.

Disclosure of Conflict of Interests

The authors state that they have no conflict of interest.

Supporting Information

Additional Supporting Information may be found in the online version of this article:

Data S1. Methods.

Fig. S1. Genotyping data of myeloid and airway epithelial TF-deficient mice.

Fig. S2. Macrophage recruitment into the lung 8 h after acid-induced acute lung injury (ALI).

Fig. S3. Myeloid TF does not influence leukocyte recruitment during sterile peritonitis.

Fig. S4. No significant changes in IL-12 and IL-1 β levels between myeloid TF and wild-type littermates 8 h after acid-induced ALI.

Fig. S5. Effect of thrombin and FVIIa on the inflammatory response of macrophages.

References

- Mackman N, Taubman M. Tissue factor: past, present, and future. *Arterioscler Thromb Vasc Biol* 2009; **29**: 1986–8.
- Williams JC, Mackman N. Tissue factor in health and disease. *Front Biosci (Elite Ed)* 2012; **4**: 358–72.
- Wilcox JN, Smith KM, Schwartz SM, Gordon D. Localization of tissue factor in the normal vessel wall and in the atherosclerotic plaque. *Proc Natl Acad Sci USA* 1989; **86**: 2839–43.
- Moosbauer C, Morgenstern E, Cuvelier SL, Manukyan D, Bidzhekov K, Albrecht S. Eosinophils are a major intravascular location for tissue factor storage and exposure. *Blood* 2007; **109**: 995–1002.
- Maugeri N, Brambilla M, Camera M, Carbone A, Tremoli E, Donati MB, de Gaetano G, Cerletti C. Human polymorphonuclear leukocytes produce and express functional tissue factor upon stimulation. *J Thromb Haemost* 2006; **4**: 1323–30.
- Steinemann S, Ulevitch RJ, Mackman N. Role of the lipopolysaccharide (LPS)-binding protein/CD14 pathway in LPS induction of tissue factor expression in monocytic cells. *Arterioscler Thromb* 1994; **14**: 1202–9.
- Drake TA, Cheng J, Chang A, Taylor FB Jr. Expression of tissue factor, thrombomodulin, and E-selectin in baboons with lethal *Escherichia coli* sepsis. *Am J Pathol* 1993; **142**: 1458–70.
- Erlich J, Fearn C, Mathison J, Ulevitch RJ, Mackman N. Lipopolysaccharide induction of tissue factor expression in rabbits. *Infect Immun* 1999; **67**: 2540–6.
- Cui MZ, Parry GC, Oeth P, Larson H, Smith M, Huang RP, Adamson ED, Mackman N. Transcriptional regulation of the tissue factor gene in human epithelial cells is mediated by Sp1 and EGR-1. *J Biol Chem* 1996; **271**: 2731–9.
- Mackman N, Brand K, Edgington TS. Lipopolysaccharide-mediated transcriptional activation of the human tissue factor gene in THP-1 monocytic cells requires both activator protein 1 and nuclear factor kappa B binding sites. *J Exp Med* 1991; **174**: 1517–26.
- Oeth P, Parry GC, Mackman N. Regulation of the tissue factor gene in human monocytic cells. Role of AP-1, NF-kappa B/Rel, and Sp1 proteins in uninduced and lipopolysaccharide-induced expression. *Arterioscler Thromb Vasc Biol* 1997; **17**: 365–74.
- Schabbauer G, Schweighofer B, Mechtcheriakova D, Lucerna M, Binder BR, Hofer E. Nuclear factor of activated T cells and early growth response-1 cooperate to mediate tissue factor gene induction by vascular endothelial growth factor in endothelial cells. *Thromb Haemost* 2007; **97**: 988–97.
- Engelmann B, Massberg S. Thrombosis as an intravascular effector of innate immunity. *Nat Rev Immunol* 2013; **13**: 34–45.
- Luo D, Szaba FM, Kummer LW, Plow EF, Mackman N, Gailani D, Smiley ST. Protective roles for fibrin, tissue factor, plasminogen activator inhibitor-1, and thrombin activatable fibrinolysis inhibitor, but not factor XI, during defense against the gram-negative bacterium *Yersinia enterocolitica*. *J Immunol* 2011; **187**: 1866–76.
- Pawlinski R, Pedersen B, Schabbauer G, Tencati M, Holscher T, Boisvert W, Andrade-Gordon P, Frank RD, Mackman N. Role of tissue factor and protease-activated receptors in a mouse model of endotoxemia. *Blood* 2004; **103**: 1342–7.
- Welty-Wolf KE, Carraway MS, Ortel TL, Ghio AJ, Idell S, Egan J, Zhu X, Jiao JA, Wong HC, Piantadosi CA. Blockade of tissue factor-factor X binding attenuates sepsis-induced respiratory and renal failure. *Am J Physiol Lung Cell Mol Physiol* 2006; **290**: L21–31.
- Bastarache JA, Sebag SC, Clune JK, Grove BS, Lawson WE, Janz DR, Roberts LJ, Dworski R, Mackman N, Ware LB. Low levels of tissue factor lead to alveolar haemorrhage, potentiating murine acute lung injury and oxidative stress. *Thorax* 2012; **67**: 1032–9.
- Shaver CM, Grove BS, Putz ND, Clune JK, Lawson WE, Carnahan RH, Mackman N, Ware LB, Bastarache JA. Regulation of alveolar procoagulant activity and permeability in direct acute lung injury by lung epithelial tissue factor. *Am J Respir Cell Mol Biol* 2015; **53**: 719–27.
- Rubinfeld GD, Caldwell E, Peabody E, Weaver J, Martin DP, Neff M, Stern EJ, Hudson LD. Incidence and outcomes of acute lung injury. *N Engl J Med* 2005; **353**: 1685–93.
- Bianchi ME. DAMPs, PAMPs and alarmins: all we need to know about danger. *J Leukoc Biol* 2007; **81**: 1–5.
- Imai Y, Kuba K, Neely GG, Yaghubian-Malhami R, Perkmann T, van Loo G, Ermolaeva M, Veldhuizen R, Leung YH, Wang H, Liu H, Sun Y. Identification of oxidative stress and Toll-like receptor 4 signaling as a key pathway of acute lung injury. *Cell* 2008; **133**: 235–49.
- Reiss LK, Uhlig U, Uhlig S. Models and mechanisms of acute lung injury caused by direct insults. *Eur J Cell Biol* 2012; **91**: 590–601.
- Glas GJ, Van Der Sluijs KF, Schultz MJ, Hofstra JJ, Van Der Poll T, Levi M. Bronchoalveolar hemostasis in lung injury and acute respiratory distress syndrome. *J Thromb Haemost* 2013; **11**: 17–25.
- Faust N, Varas F, Kelly LM, Heck S, Graf T. Insertion of enhanced green fluorescent protein into the lysozyme gene creates mice with green fluorescent granulocytes and macrophages. *Blood* 2000; **96**: 719–26.
- Rautou PE, Tatsumi K, Antoniak S, Owens AP III, Sparkenbaugh E, Holle LA, Wolberg AS, Kopec AK, Pawlinski R, Luyendyk JP, Mackman N. Hepatocyte tissue factor contributes to the hypercoagulable state in a mouse model of chronic liver injury. *J Hepatol* 2016; **64**: 53–9.
- Pfaff MW. A new mathematical model for relative quantification in real-time RT-PCR. *Nucleic Acids Res* 2001; **29**: e45.
- Stojkovic S, Kaun C, Basilio J, Rauscher S, Hell L, Krychtiuk KA, Bonstingl C, de Martin R, Gröger M, Ay C, Holnthoner W, Eppel W, Neumayer C, Huk I, Huber K, Demyanets S, Wojta J. Tissue factor is induced by interleukin-33 in human endothelial cells: a new link between coagulation and inflammation. *Sci Rep* 2016; **6**: 25171.
- Geissmann F, Jung S, Littman DR. Blood monocytes consist of two principal subsets with distinct migratory properties. *Immunity* 2003; **19**: 71–82.
- Garcia-Bonilla L, Faraco G, Moore J, Murphy M, Racchumi G, Srinivasan J, Brea D, Iadecola C, Anrather J. Spatio-temporal profile, phenotypic diversity, and fate of recruited monocytes into the post-ischemic brain. *J Neuroinflammation* 2016; **13**: 285.
- Martin NT, Martin MU. Interleukin 33 is a guardian of barriers and a local alarmin. *Nat Immunol* 2016; **17**: 122–31.
- Wicks IP, Roberts AW. Targeting GM-CSF in inflammatory diseases. *Nat Rev Rheumatol* 2016; **12**: 37–48.
- Tanjore H, Xu XC, Polosukhin VV, Degryse AL, Li B, Han W, Sherrill TP, Plieth D, Neilson EG, Blackwell TS, Lawson WE. Contribution of epithelial-derived fibroblasts to bleomycin-induced lung fibrosis. *Am J Respir Crit Care Med* 2009; **180**: 657–65.
- Kirchhofer D, Moran P, Bullens S, Peale F, Bunting S. A monoclonal antibody that inhibits mouse tissue factor function. *J Thromb Haemost* 2005; **3**: 1098–9.
- Ware LB, Camerer E, Welty-Wolf K, Schultz MJ, Matthay MA. Bench to bedside: targeting coagulation and fibrinolysis in acute

- lung injury. *Am J Physiol Lung Cell Mol Physiol* 2006; **291**: L307–11.
- 35 Antoniak S, Tatsumi K, Hisada Y, Milner JJ, Neidich SD, Shaver CM, Pawlinski R, Beck MA, Bastarache JA, Mackman N. Tissue factor deficiency increases alveolar hemorrhage and death in influenza A infected mice. *J Thromb Haemost* 2016; **14**: 1238–48.
 - 36 Shaver CM, Grove BS, Clune JK, Mackman N, Ware LB, Bastarache JA. Myeloid tissue factor does not modulate lung inflammation or permeability during experimental acute lung injury. *Sci Rep* 2016; **6**: 22249.
 - 37 Kothari H, Rao LV, Vankayalapati R, Pendurthi UR. Mycobacterium tuberculosis infection and tissue factor expression in macrophages. *PLoS ONE* 2012; **7**: e45700.
 - 38 Venkatasubramanian S, Tripathi D, Tucker T, Paidipally P, Cheekatla S, Welch E, Raghunath A, Jeffers A, Tvinnereim AR, Schechter ME, Andrade BB, Mackman N, Idell S, Vankayalapati R. Tissue factor expression by myeloid cells contributes to protective immune response against Mycobacterium tuberculosis infection. *Eur J Immunol* 2016; **46**: 464–79.
 - 39 Kawasaki M, Kuwano K, Hagimoto N, Matsuba T, Kunitake R, Tanaka T, Maeyama T, Hara N. Protection from lethal apoptosis in lipopolysaccharide-induced acute lung injury in mice by a caspase inhibitor. *Am J Pathol* 2000; **157**: 597–603.
 - 40 Wang HL, Akinci IO, Baker CM, Urich D, Bellmeyer A, Jain M, Chandel NS, Mutlu GM, Budinger GR. The intrinsic apoptotic pathway is required for lipopolysaccharide-induced lung endothelial cell death. *J Immunol* 2007; **179**: 1834–41.
 - 41 McAuley DF, Frank JA, Fang X, Matthay MA. Clinically relevant concentrations of beta2-adrenergic agonists stimulate maximal cyclic adenosine monophosphate-dependent airspace fluid clearance and decrease pulmonary edema in experimental acid-induced lung injury. *Crit Care Med* 2004; **32**: 1470–6.
 - 42 Prefontaine D, Nadigel J, Chouiali F, Audusseau S, Semaili A, Chakir J. Increased IL-33 expression by epithelial cells in bronchial asthma. *J Allergy Clin Immunol* 2010; **125**: 752–4.
 - 43 Higure A, Okamoto K, Hirata K, Todoroki H, Nagafuchi Y, Takeda S, Martin JG, Hamid Q. Macrophages and neutrophils infiltrating into the liver are responsible for tissue factor expression in a rabbit model of acute obstructive cholangitis. *Thromb Haemost* 1996; **75**: 791–5.
 - 44 Prutkina EV, Sepp AV, Tsybikov NN. Lung tissue factor expression changes in relation to the stage of respiratory distress syndrome in the presence of pneumonia in A/H1N1 influenza. *Arkh Patol* 2013; **75**: 16–21.
 - 45 Mackman N. The many faces of tissue factor. *J Thromb Haemost* 2009; **7**: 136–9.