



Aalborg Universitet

AALBORG UNIVERSITY  
DENMARK

## Techno-Economic Optimization of Grid-Connected Photovoltaic (PV) and Battery Systems Based on Maximum Demand Reduction (MDRed) Modelling in Malaysia

Subramani, Gopinath; Ramachandaramurthya, Vigna K.; Sanjeevikumar, Padmanaban; Holm-Nielsen, Jens Bo; Blaabjerg, Frede; Leonowicz, Zbigniew; Kostyla, Pawel

*Published in:*  
Energies

*DOI (link to publication from Publisher):*  
[10.3390/en12183531](https://doi.org/10.3390/en12183531)

*Creative Commons License*  
CC BY 4.0

*Publication date:*  
2019

*Document Version*  
Publisher's PDF, also known as Version of record

[Link to publication from Aalborg University](#)

*Citation for published version (APA):*

Subramani, G., Ramachandaramurthya, V. K., Sanjeevikumar, P., Holm-Nielsen, J. B., Blaabjerg, F., Leonowicz, Z., & Kostyla, P. (2019). Techno-Economic Optimization of Grid-Connected Photovoltaic (PV) and Battery Systems Based on Maximum Demand Reduction (MDRed) Modelling in Malaysia. *Energies*, 12(18), [3531]. <https://doi.org/10.3390/en12183531>

### General rights

Copyright and moral rights for the publications made accessible in the public portal are retained by the authors and/or other copyright owners and it is a condition of accessing publications that users recognise and abide by the legal requirements associated with these rights.

- ? Users may download and print one copy of any publication from the public portal for the purpose of private study or research.
- ? You may not further distribute the material or use it for any profit-making activity or commercial gain
- ? You may freely distribute the URL identifying the publication in the public portal ?

### Take down policy

If you believe that this document breaches copyright please contact us at [vbn@aub.aau.dk](mailto:vbn@aub.aau.dk) providing details, and we will remove access to the work immediately and investigate your claim.

Article

# Techno-Economic Optimization of Grid-Connected Photovoltaic (PV) and Battery Systems Based on Maximum Demand Reduction (MDRed) Modelling in Malaysia

Gopinath Subramani <sup>1</sup>, Vigna K. Ramachandaramurthy <sup>2,\*</sup> , P. Sanjeevikumar <sup>3</sup> ,  
Jens Bo Holm-Nielsen <sup>3</sup>, Frede Blaabjerg <sup>4</sup> , Leonowicz Zbigniew <sup>5</sup>  and Pawel Kostyla <sup>5</sup>

<sup>1</sup> Centre of Advanced Electrical and Electronic Systems (CAEES), Faculty of Engineering & the Built Environment, Segi University, Kota Damansara, Petaling Jaya 47810, Malaysia; sgopinath@segi.edu.my

<sup>2</sup> Institute of Power Engineering, Department of Electrical Power Engineering, College of Engineering, Universiti Tenaga Nasional, Kajang 43000, Malaysia

<sup>3</sup> Center for Bioenergy and Green Engineering, Department of Energy Technology, Aalborg University, 6700 Esbjerg, Denmark; san@et.aau.dk (P.S.); jhn@et.aau.dk (J.B.H.-N.)

<sup>4</sup> Center of Reliable Power Electronics (CORPE), Department of Energy Technology, Aalborg University, 9220 Esbjerg, Denmark; fbl@et.aau.dk

<sup>5</sup> Faculty of Electrical Engineering, Wroclaw University of Science and Technology, Wyb. Wyspianskiego 27, 50370 Wroclaw, Poland; zbigniew.leonowicz@pwr.edu.pl (L.Z.); pawel.kostyla@pwr.edu.pl (P.K.)

\* Correspondence: vigna@uniten.edu.my

Received: 11 July 2019; Accepted: 9 September 2019; Published: 13 September 2019



**Abstract:** Under the present electricity tariff structure in Malaysia, electricity billing on a monthly basis for commercial and industrial consumers includes the net consumption charges together with maximum demand (MD) charges. The use of batteries in combination with photovoltaic (PV) systems is projected to become a viable solution for energy management, in terms of peak load shaving. Based on the latest studies, maximum demand (MD) reduction can be accomplished via a solar PV-battery system based on a few measures such as load pattern, techno-economic traits, and electricity scheme. Based on these measures, the Maximum Demand Reduction (MDRed) Model is developed as an optimization tool for the solar PV-battery system. This paper shows that energy savings on net consumption and maximum demand can be maximized via optimal sizing of the solar PV-battery system using the MATLAB genetic algorithm (GA) tool. GA optimization results revealed that the optimal sizing of solar PV-battery system gives monthly energy savings of up to 20% of net consumption via solar PV self-consumption, 3% of maximum demand (MD) via MD shaving and 2% of surplus power supplied to grid via net energy metering (NEM) in regards to Malaysian electricity tariff scheme and cost of the overall system.

**Keywords:** maximum demand (MD); solar PV; battery energy storage system (BESS); net energy metering (NEM); maximum demand reduction (MDRed) model

## 1. Introduction

The release of greenhouse gases, especially CO<sub>2</sub>, by utilities using coal and gas reduces the ozone layer and creates more pollution. Energy demand in developing countries is projected to rise about 65% by 2040, reflecting the growing prosperity and the accelerating economies. The global energy demand will increase by about 35% due to the world's population growth [1]. The high penetration level of solar photovoltaic (PV) in the utility sector decreases the greenhouse gases emissions and

promotes the use of renewable energy compared to conventional energy resources. Solar PV systems are able to deliver an alternative solution to reduce the peaking load throughout the day.

However, the intermittent supply of solar PV system during bad weather condition reduces the ability to supply power during peak hours [2]. Solar PV system in combination with energy storage is expected to be the optimum solution to accommodate the peak load.

In the modern era, energy storage technology has been widely applied for peak load reduction. Energy storage devices such as batteries, thermal storage, and supercapacitors offer similar functionality to peaking power plants. Nevertheless, each of these technologies has economic and technical barriers to be solved [3]. Sustainable Energy Development Authority (SEDA) Malaysia has promoted clean energy use by authorizing the implementation of renewable energy tariff mechanisms under the Renewable Energy Act 2011. In November 2016, the Net Energy Metering (NEM) scheme was implemented to encourage the use of renewable energy (RE), especially solar PV in the grid. NEM permits the self-consumption of generated power by the RE while exporting the surplus power to the utilities at a fixed rate. Under the NEM scheme, the surplus generation rate has been set at MYR 0.31 (USD 0.07)/kWh and MYR 0.238 (USD 0.05)/kWh for low voltage and medium voltage interconnection facilities, respectively [4].

Nevertheless, the low energy rate will reduce the excess energy profit compared to the current Time-of-Use (ToU) pricing scheme of Malaysian electricity tariff [5]. This has driven the focus on optimization of the solar PV-battery system to capitalize on the energy-saving profits associated with the electricity price variances between ToU and NEM scheme. Under the ToU scheme, maximum demand (MD) is measured by recording the peak load over the timeframe of successive 30 min intervals from 8.00 a.m. until 10.00 p.m. every day in a month. Table 1 displays the Malaysian electricity tariff rate for different categories of utility customers. As per Table 1, for industrial and commercial sectors, electricity tariff scheme is effective from 1st January 2014 and supersedes the previous tariff schedule which was effective from 1st June 2011 according to Tenaga Nasional Berhad (TNB), the Malaysian electricity company and only electric utility company in Peninsular Malaysia. Based on the Malaysian electricity scheme under TNB, commercial and industrial sectors are categorized based on different tariff rates. C1 and E1 customers incur flat rate charges for MD and net consumption. For C2 and E2 categories, net consumption will be charged based on peak and off-peak periods together with MD charges. The peak period timeframe is from 8.00 a.m. until 10.00 p.m. and the off-peak period is from 10.00 p.m. until 8.00 a.m., respectively [6]. For these reasons, the commercial and industrial customers are encouraged to manage their load consumption according to their respective electricity tariff scheme by focusing on peak and off-peak period rates. Implementation of renewable energy (RE) projects is expected to reduce the maximum demand and will contribute significantly to the overall generation mix in Malaysia.

**Table 1.** Malaysia electricity tariff categories (Medium Voltage level).

Tariff	Unit	C1 <sup>a</sup>	C2 <sup>b</sup>	E1 <sup>c</sup>	E2 <sup>d</sup>
Peak	RM (USD)/kWh	0.0	0.365 (0.08)	0.0	0.365 (0.08)
Off-peak	RM (USD)/kWh	0.0	0.224 (0.05)	0.0	0.219 (0.05)
Net consumption	RM (USD)/kWh	0.365 (0.08)	0.0	0.337 (0.08)	0.0
Maximum Demand (MD)	RM (USD)/kW	30.3 (6.82)	45.1 (10.2)	29.6 (6.7)	37.0 (8.3)

C1<sup>a</sup> represents the commercial sector (general) [6]. C2<sup>b</sup> represents the commercial sector (peak and off-peak) [6]. E1<sup>c</sup> represents the industrial sector (general) [6]. E2<sup>d</sup> represents the industrial sector (peak and off-peak) [6].

Adding solar photovoltaic generation to commercial or industrial loads reduces utility energy (kWh) charges, but often has little effect on maximum demand (kW) charges. As per Figure 1, peak demands or maximum demand often occur early in the morning during the beginning of office hours when the solar PV generation is slowly increased. Commercial customers with PV generation may have the same high peak (kW) demand but with a lower average (kW) demand. Since they have a higher maximum demand, they will generally benefit more from maximum demand reduction using a

battery energy storage system. Peak shaving or maximum demand reduction is the process of reducing the amount of energy purchased from the utility sector during peak hours. A couple of the options include reducing consumption by turning off non-essential equipment during peak hours. Apart from that, installing solar PV-battery systems that can assist with reducing maximum demand, since much of the peak demand occurs during times when this system would be effective.

However, variation in solar irradiance pattern especially during peak hours may lead to a minimal reduction of MD since electricity billing for MD charges are captured on any day with peaking load throughout the month. Therefore, a new approach called Maximum Demand Reduction (MDRed) scheme has been developed to optimally size the solar PV-battery system with respect to Time-of-Use (ToU) pricing scheme of Malaysian electricity tariff and cost of the overall system corresponding to Return on Investment (ROI). Apart from that, this approach will solve the challenges faced due to intermittency of solar PV generation for reliable operation of maximum demand reduction during peak hours with the support of battery energy storage system.

## 2. Concept of Maximum Demand Reduction (MDRed) Model

Recently, a lot of studies and models have been developed using solar PV-battery systems. Braam et al. [7] have developed a novel forecast-based control system for photovoltaic-battery systems. It estimates the photovoltaic excess power and develops a charging plan for the battery to store the energy from the photovoltaic peak-production. Wang et al. [8] have developed a state-space based model for BESS and implement a modest yet effective method for peak load reduction by considering device limitations. Pimm et al. [9] have developed a demand model to produce high-resolution domestic load profiles to determine how much peak shaving could be achieved with battery storage. An efficient technique of finding the prospective peak shaving using electricity storage is developed for this purpose. It shows that adequate levels of storage capacity can provide significant peak demand reductions if properly coordinated. Ru et al. [10] have studied the minimization of the cost associated with purchasing from (or selling back to) the utility grid and the battery capacity loss while at the same time sustaining the load and decreasing the peak demand purchased from the grid.

Apart from that, Linsen et al. [11] have developed the Battery-Photovoltaic-Simulation (BaPSi) model to conduct techno-economic analyses of PV-battery systems. The model reflects the variation in the environment to determine the solar PV sizing and battery storage capacity. For each system, the mixture of the total costs of electric supply as well as associated technical and economic output parameters are calculated. Kleissl et al. [12] have developed an operational battery dispatch control system using linear programming for a solar PV-battery storage system that practices load and solar prediction to alleviate peak load. Moghim et al. [13] developed the battery energy storage system (BESS) control algorithm to concurrently overcome the outage issue and shave the peak demand considering the BESS sizing and degradation, microgrid system cost reduction, as well as microgrid scheduling. Liu et al. [14] studied the energy management with battery energy storage system (BESS) optimisation by bearing in mind the cost of distributed generations, cost of battery system, and bi-directional energy trading. Dongol et al. [15] developed the Model Predictive Control (MPC) scheme that could be applied to an existing grid linked household with PV-battery system such that the use of battery is maximized and at the same time, peaks in PV power and load demand are reduced.

Optimal sizing of the solar PV-battery system needs to be based on the effectiveness of self-consumption and MD reduction with respect to return on investment. As stated by Subramani, et al. [16], based on Figures 1 and 2, the optimal solar PV-battery sizing depends on important elements such as load pattern, techno-economic traits, and electricity billing scheme to meet high maximum demand reduction. In regard to load profile, the load consumption data of one (1) or two (2) years will be adequate to show the load steadiness mainly on MD level and load consumption pattern during the peak period. Since the MD charges are very high, the energy savings through optimal sizing of the PV and battery system will be able to maximize the electricity bill savings mainly due to peak load reduction for commercial and industrial customers. Battery efficiency in terms of the state of

charge (SOC) and depth of discharge (DOD) together with solar irradiance and PV inverter efficiency will be key for optimal sizing. The total cost of the solar PV-battery system will be very critical in response to the total energy savings, to have a good return on investment to undertake the project. As the core battery technology matures and unit pricing declines, bi-directional battery converters providing both battery charging (AC to DC) and battery inverting (DC to AC) will emerge as a rapidly growing new market for power converters. The Maximum Demand Reduction (MDRed) model is proposed and developed as an optimization tool for the solar PV-battery system. It focuses on peak load shaving and maximization of self-consumption via PV generation and battery system with respect to MD limits. The MDRed model consist of a solar PV array, PV inverter, lithium-ion battery and bi-directional converter. The MDRed model is developed by considering the technical and economic perspective. Firstly, a technical model is formulated which focuses on the battery storage and solar PV capacity to reduce the net load consumption and maximize the MD shaving for a given load pattern. Secondly, the economic model focuses on the cost associated with the system components compared with the energy savings through net consumption and maximum demand to cater for the highest Return on Investment. A flowchart describing the proposed MDRed model is shown in Figure 2. The required input parameters for MDRed model calculation include the consumer load data, solar PV-battery system specification data, and general economic parameters. In MDRed Model, the electricity supply chain is based on the energy balance between the supply and the demand side with respect to MD limitations.

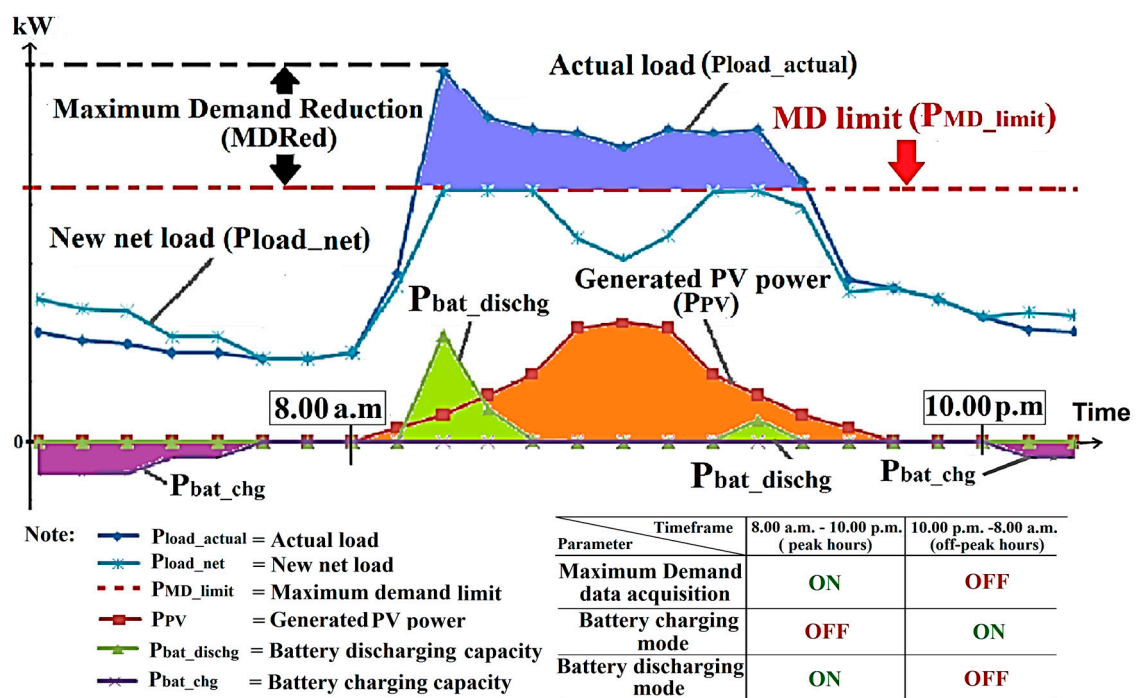


Figure 1. Peak or maximum demand shaving concept using solar PV-battery system [13].

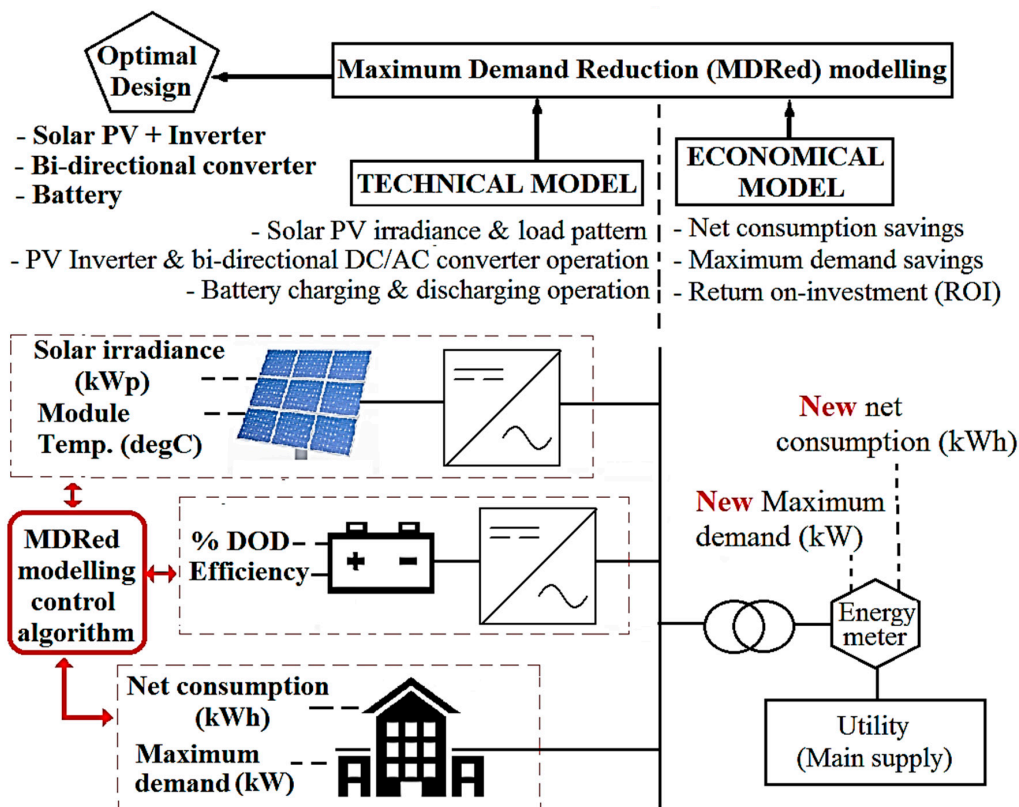


Figure 2. Maximum demand reduction (MDRed) modeling approach.

### 3. MATLAB Genetic Algorithm (GA) for MDRed Optimization Model

Based on Table 2, optimization techniques such as Genetic Algorithm (GA), Harmony Search (HS), Particle Swarm Optimization (PSO) and Hybrid Optimization are the most prominent algorithms to size the solar PV-battery system.

Table 2. Comparison of optimization techniques.

Technique	Highlights	Strength	Weakness	Ref.
Genetic Algorithm (GA)	Mimics processes of natural evolution, like inheritance, mutation, selection, and crossover	Can solve problems with multiple solutions; easily transferable to existing simulations and models	Convergence speed is slower than other stochastic algorithms	[17,18]
Particle swarm optimization (PSO)	Mimics bird and fish movement behavior	The speed of their searching is fast; calculation in PSO is simple in comparison to other methods	Cannot work out the problems of non-coordinate system	[17,18]
Bee-inspired algorithms	Based on the intelligent foraging behavior of honey bee	The algorithm has local search and global search ability; implemented with several optimization problems; easy to use	Random initialization; algorithm has several parameters	[19]
Harmony search	Based on improvisation process of jazz musicians	Can handle discrete variables as well as continuous variables; ability to perform a global and local search	Complex solving process	[20]
Biogeography-based optimization (BBO)	Behavior studies of species in nature	Fast computation time; good convergence accuracy	Poor in exploiting the solutions; no provision for selecting the best members of each generation	[21]
Hybrid optimization technique	Developed by using two or more algorithms	Better accuracy in results; takes less computational time (in some cases)	Increased complexity; difficult to code	[22]

Also, these techniques can deal with the random probability distribution or generate a pattern of renewable energy sources [23]. In this paper, the GA programming is developed for the optimization of optimal solar PV-battery sizing in regard to peak load shaving. GA has several advantages such as problem-solving with numerous solutions, easy to understand and can directly be transferred to existing simulations and models [24]. Therefore, several modeling equations and approaches for designing a solar PV-battery system via GA have been developed to ensure the optimum sizing of the overall system.

The proposed MDRed model using GA coding was developed to solve the optimal capacity of solar PV and battery system to maximize the energy savings via self-consumption and MD shavings. Input data includes hourly solar irradiation in Watts-peak (Wp) and multiple patterns of monthly load power consumption in kilowatts (kW). Besides that, battery charging and discharging shall be operated based on Time of Use (ToU) under Malaysian electricity tariff for commercial and industrial sector. MDRed modelling scheme is made of mathematical formulation which includes the electricity tariff model, solar PV model and battery energy storage system model. Apart from that, the economical model mainly focuses on cost of the solar PV and battery system and Return on Investment (ROI).

### 3.1. Financial Model

#### 3.1.1. Electricity Tariff Model

Most electricity tariff categories for commercial and industrial sectors are designed to encourage customers to control their electricity demand at daytime peaks since MD charges are very high. Referring to Table 1, the electricity tariff model is specified in Table 3 for net consumption and maximum demand calculation according to electricity tariff categories on commercial and industrial sectors.

**Table 3.** Tariff rates under Malaysian utility billing scheme.

Tariff	Unit	Category	Total Bill
Net consumption, $P_{load\_net}$	MYR/kWh, $U_{load\_net}$	C1 & E1	$C_{net}$
Maximum Demand, $P_{MD}$	MYR/kW, $U_{MD}$	C1, C2, E1 & E2	$C_{MD}$

The total electricity bill ( $C_{bill}$ ) for commercial and industrial customers as calculated as follows [6]:

$$C_{MD\_kW} = E_{MD\_kW} * P_{MD} \quad (1)$$

$$C_{net\_kWh} = E_{load\_net} * P_{load\_net} \quad (2)$$

$$C_{bill} = \int P_{load\_net} * E_{load\_net} + \int P_{MD} * E_{MD} \quad (3)$$

where the combination of maximum demand bill ( $C_{MD\_kW}$ ) in Equation (1) and net consumption bill ( $C_{net\_kWh}$ ) in Equation (2) will be added on a monthly basis. Equations (1)–(3) are formulated based on the Malaysian electricity tariff category for the commercial and industrial sector. Based on Table 4 and Figure 3, a Malaysian higher learning institution's load profile under C1 electricity tariff is chosen for the case study. Since the case studies is focusing on solar PV-battery sizing based on maximum demand (MD) reduction approach, the concept can be explained using one (1) type of load profile from any commercial or industrial sector. In this paper, C1 category load profile for four (4) consecutive months from January 2017 until April 2017 is used for validation studies. Based on energy data evaluation, highest load or maximum demand is recorded at 1300 kW during beginning of academic calendar for the higher learning institution. Therefore, four (4) months of load profile data is sufficient to cater for optimal sizing of solar PV and battery system based on the Malaysian electricity tariff.

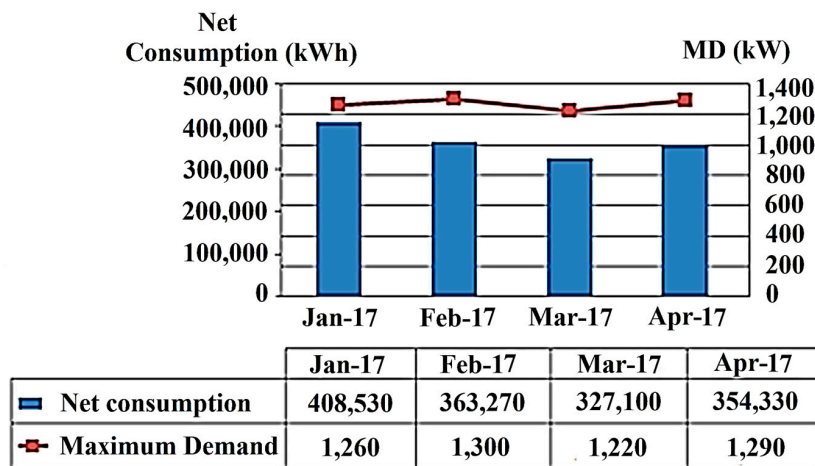


Figure 3. Energy consumption for C1 category commercial sector.

The MD is recorded between 1200 kW and 1300 kW during peak hours in between 8.30 a.m. and 10.30 a.m. Figure 3 shows the monthly net consumption and maximum demand recorded in electricity billing of the commercial building. Table 4 shows the maximum demand recorded throughout the months during peak hours only. It can be observed that the highest MD occurs in the month of February 2017 at 1300 kW. Besides that, the highest load has been consumed in between 8.30 a.m. and 10.00 a.m. for first four months in the year 2017. These data will be used in a MATLAB (2016a, The Mathworks, Natick, MA, USA) GA optimization algorithm for solar PV and battery sizing. The weather condition in Malaysia is suitable for solar PV generation. Based on Figure 4, the weather condition is almost predictable with intermittent sunlight from 8.30 a.m. until 5.30 p.m. The peak PV generation is normally achieved at 1000 W/m<sup>2</sup> and with solar PV module temperature and ambient temperature reaching 50 °C and 33 °C, respectively.

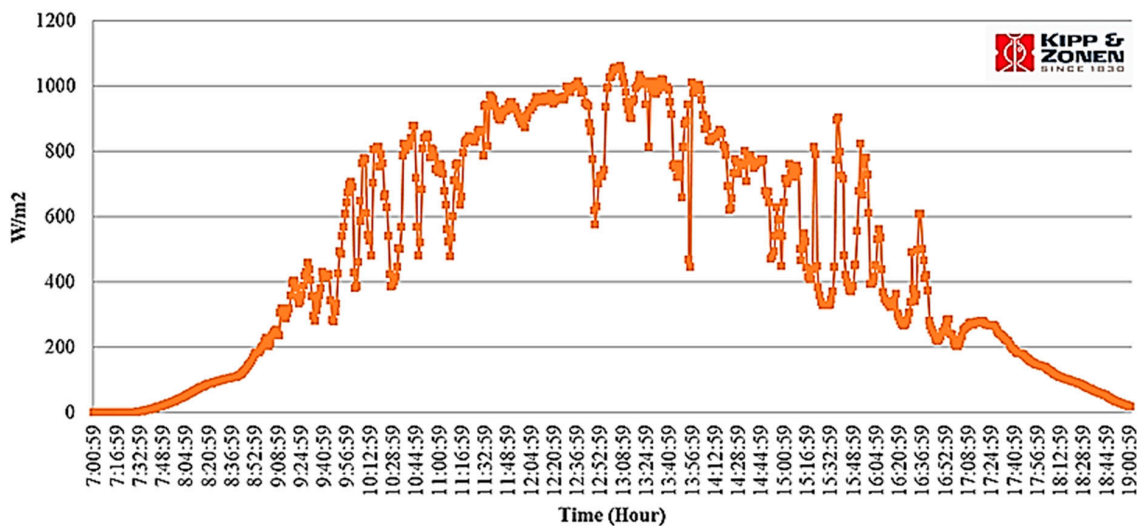


Figure 4. Actual solar irradiance measurement data at Nilai, Negeri Sembilan, Malaysia.

Table 4. Maximum demand captured during peak hours.

Month-Year	Time	Load (kW)	Total Cost (MYR)
Jan-17	9:30:00	1260	38,178.00
Feb-17	9:00:00	1300	39,390.00
Mar-17	10:00:00	1220	36,966.00
Apr-17	8:30:00	1290	39,087.00



### 3.1.2. Solar PV Model

The difficulty of calculating the energy generated by a solar PV has been extensively studied in the technical literature. The calculation of solar PV power of a grid-connected solar PV system is classified under two categories which is indirect method and direct method. As the operation and the performance of a PV focuses mainly on its maximum power, the indirect method describing the PV module's maximum power output behaviors are more theoretical for solar PV system valuation. Indirect method directly calculates the maximum power without calculating first the I-V curve of the solar PV array [25]. This simplified indirect method provides the modelled power to be used in MDRed modelling. Based on Rus-Casa et al., indirect method directly provides power from atmospheric parameters and information provided by the manufacturers in the datasheets. PV modelled power in per-unit conversion is based on PV module temperature and solar irradiance level at Standard Testing Condition (STC). The formula for PV modelled power in per-unit convention,  $P_{mod}$  is given as follows [25]:

$$P_{mod} = P_{PV\_kwp} * (G/G_{STC}) [1 - \gamma * (T_C - T_{STC})] \quad (4)$$

where  $G_s(t)$  is the measured solar irradiance (hourly) and  $P_{PV\_kwp}$  is the rated PV power at Standard Testing Condition (STC).  $G_{STC}$  and  $T_{STC}$  is the solar irradiance ( $1000 \text{ W/m}^2$ ) and PV module temperature ( $25 \text{ degC}$ ) at Standard Testing Conditions (STC), respectively. Besides that,  $\gamma$  is the temperature correction based on measured polycrystalline silicon PV module temperatures with a power decrease in between  $0.30\%/^{\circ}\text{C}$  and  $0.5\%/^{\circ}\text{C}$ .

The measured module temperature,  $T_C$  is set at  $50 \text{ }^{\circ}\text{C}$  at solar irradiance of 3.5 up to 4 h per day averagely based on Malaysian climate. Solar irradiance measurement was taken at Nilai, Negeri Sembilan, Malaysia using a CMP3 pyranometer (KIPP & ZONEN, Delft, The Netherlands). Apart from the measured solar irradiance, the actual generated power will be obtained with respect to solar irradiance and PV module temperature. The cost of the solar PV system and batteries are the important parameters for optimal sizing of the solar PV-battery system. Table 5 shows the historical prices of the solar PV-inverter system from the year 2010–2016 in Peninsular Malaysia [26]. The  $P_{PV\_rated}$  can be calculated as follows:

$$P_{PV\_rated} = P_{PV\_kWp}/\eta_{inv} \quad (5)$$

where  $P_{PV\_rated}$  is the rated dc output power of the proposed PV array in kWp and  $\eta_{inv}$  is the conversion efficiency from dc to ac according to inverter efficiency. Nowadays, the PV inverters can operate at 90% of conversion efficiency.

**Table 5.** National trends in PV-inverter system prices.

Year	2010 <sup>a</sup>	2011 <sup>a</sup>	2012 <sup>a</sup>	2013 <sup>a</sup>	2014 <sup>a</sup>	2015 <sup>a</sup>	2016 <sup>a</sup>	2017
Price (MYR)/kWp	19,120	11,000	9000	7500	8500	7500	7300	-

<sup>a</sup> Data is collected from [5].

### 3.1.3. Battery Energy Storage System (BESS) Model

The battery energy storage system (BESS) comprises batteries, control and power conditioning system (C-PCS). Typically, batteries will absorb power from the grid during the off-peak hours and discharge power during peak demand. Currently, significant research and development in battery technology are being carried out. Tesla (Arizona, AZ, USA) has designed and commercialized the Powerwall 2, the second iteration of its home battery system. Tesla Powerwall 2 costs MYR24,200 (USD5500) and delivers 14 kWh of capacity [27].

As the core battery technology matures and the unit pricing decays, bi-directional converters providing both battery charging (AC to DC) and battery inverting (DC to AC) will grow due to the new market for power converters. Various technologies for BESS are available, namely lead acid (LA), vanadium redox flow (VRB), zinc–bromine flow (ZnBr), polysulfide bromide battery (PSB),

nickel–cadmium battery (NiCd), sodium sulfur and lithium-ion (Li-ion) battery [28]. Four battery technologies are chosen for the investigation of BESS systems such as LA, VRB, ZnBr, and Li-ion. The key parameters for these batteries are tabulated in Table 6.

**Table 6.** Key parameters of batteries.

Technology	DOD <sup>a</sup>	Round Trip <sup>b</sup>	Cycle Life <sup>c</sup>		Cost of Energy <sup>b</sup> (RM/kWh)	
	(%)	Efficiency (%)	Low	High	Low	High
LA	50	85	500	2800	185	1147
VRB	100	85	12,000	13,342	648	3700
ZnBr	100	75	1500	2000	740	2220
Li-ion	85	90	1000	10,000	2220	9250

<sup>a</sup> Data is collected from [29]; <sup>b</sup> Data is collected from [30]; <sup>c</sup> Data is collected from [31].

The batteries are rated in terms of their energy and power capacities. Some of the other essential features of a battery are its efficiency, life span, operating temperature, depth of discharge (DOD), self-discharge and energy density. In most cases, lithium-ion batteries and lead-acid batteries are the best choices for peak shaving techniques, although other battery types can be more affordable [32]. While lead-acid batteries have a relatively short lifespan and lower DOD than other battery types, they are also one of the least expensive options in the energy storage sector. Lithium-ion batteries are lighter and better than lead-acid batteries [33]. They also have higher DOD and longer lifespan when compared to lead-acid batteries. Since the battery is also operated on DC, an AC-to-DC converter is necessary for charging the battery and a DC-to-AC converter is necessary during discharging the battery. For simplicity, we assumed that both converters have the identical constant conversion efficiency satisfying:

$$P_{\text{conv}}(t) = \begin{cases} \eta_B P_B(t), & \text{if } P_B(t) < 0 \\ \frac{P_B(t)}{\eta_B} & \text{otherwise} \end{cases} \quad (6)$$

Note that,  $\eta_B$  is the round trip efficiency of the battery converters. In other words,  $P_{\text{conv}}$  is the power exchanged with the AC bus when the converters and the battery are treated as a single entity. Similarly, we can derive:

$$P(t) = \begin{cases} \frac{P_{\text{conv}}(t)}{\eta_B} & \text{if } P_{\text{conv}}(t) < 0 \\ \eta_B P_{\text{conv}}(t) & \text{otherwise} \end{cases} \quad (7)$$

Apart from that, the rated capacity of the battery,  $P_{\text{Bat}}$  is calculated by considering the optimal size of the battery,  $E_{\text{bat}}$  as follows:

$$P_{\text{bat}}(\text{kWh}) = E_{\text{bat}}(\text{kWh}) * \frac{\eta_{\text{bat}}}{\text{DOD}} \quad (8)$$

The battery Depth of Discharge (DOD) has a significant impact on a battery's life cycle. The battery life cycle is inversely proportional to the DOD. The DOD of a battery defines the fraction of the power that can be withdrawn from the battery. For instance, if a battery system is 100% fully charged, it means the DOD of this battery is 0% and vice versa. Generally, battery state of charge (SOC) provides the ratio of the amount of energy presently stored in the battery to the nominal rated capacity.

### 3.2. Economical Model

The cost of optimal PV array,  $C_{\text{PV\_inv}}$  can be calculated as follows:

$$C_{\text{PV\_inv}} = U_{\text{PV}} * P_{\text{PV\_rated}} \quad (9)$$

where  $U_{\text{PV\_kWp}}$  is the unit cost of PV array per kWp. Apart from that, reducing the cost of PV inverter system will lead to lower miscellaneous costs such as operation and maintenance costs and replacement

costs. The overall cost of the solar PV system is the combination of both costs of power conversion units and cost of inverter. In this paper, the overall solar PV system cost,  $C_{total\_PV\_inv}$  is evaluated by referring to a specific planning period and is given by:

$$C_{total\_PV\_inv} (MYR) = C_{PV} + C_{O\&M\_PV} + C_{RC\_PV} \quad (10)$$

The cost of batteries,  $C_{Bat}$  is calculated as follows:

$$C_{bat} (MYR) = U_{bat} (MYR/kWh) * P_{bat} (kWh) \quad (11)$$

where  $U_{Bat}$  is the unit cost of the batteries in kWh,  $P_{Bat}$  is the rated capacity of the batteries. The cost of power conversion units,  $C_{conv}$  is as follows:

$$C_{conv} (MYR) = U_{conv} (MYR/kWh) \times P_{conv} (kW) \quad (12)$$

where  $U_{Conv}$  is the unit cost of the power conversion units in kW and  $P_{conv}$  is the power rating of the converter. The overall cost of the BESS is the combination of both costs of power conversion units and cost of batteries. In this paper, the total overall BESS cost,  $C_{total\_BESS}$  is evaluated by referring to a specific planning period and is given by:

$$C_{BESS} = C_{bat} + C_{conv} \quad (13)$$

$$C_{total\_BESS} (MYR) = C_{BESS} + C_{o\&m\_BESS} + C_{rep\_BESS} + C_{disp\_bat} + C_{LS\_bat} \quad (14)$$

where  $C_{BESS}$  is the capital cost,  $C_{o\&m\_BESS}$  is the operation and maintenance cost,  $C_{rep\_BESS}$  is the replacement cost,  $C_{disp\_bat}$  is the disposal cost related to the potential cost achievable from recycling old batteries and lifespan cost ( $C_{LS\_bat}$ ) of all the main components including its system. However, this is not added in MDRed modeling since the cost of the BESS is very high and will lead to longer ROI. Cost of energy savings on net consumption and MD are according to Malaysian electricity tariff allocated for each category of commercial and industrial customers. For commercial consumers with tariff rates of C1 category, the annual savings,  $S_{yr\_shave}$  can be calculated as follows:

$$P_{shave\_MD} = [\max(\sum P_{load\_net})] \quad (15)$$

$$S_{yr\_shave} = (\sum P_{load\_shave} * E_{load\_net}) + (P_{shave\_MD} * E_{MD}) + (\sum P_{PV\_surplus} * E_{surplus}) * 12 \quad (16)$$

Under the NEM scheme, the rate of surplus generation,  $E_{surplus}$  has been formulated at MYR 0.238 (USD 0.05)/kWh for medium voltage interconnection. Apart from that, overall loan payment is important to include all the incurred cost such as operation and maintenance cost ( $C_{O\&M}$ ), replacement cost ( $C_{RC}$ ) and lifespan cost ( $C_{LS}$ ) of all the main components including its system. This is applied to PV-inverter and BESS components which includes the batteries and converter unit. Therefore, the overall cost of the system comprises of:

$$C_{full\_loan} = (C_{total\_PV} + C_{total\_BESS}) * \text{interest rate} (\%) \quad (17)$$

The energy flow schedule of solar PV-battery system integration has been included to lower the daily operating cost mainly on the MD reduction at the specific limit. For GA optimization, 7% of interest rate for total load payment has been included.

#### 4. Modeling of System Reliability

Several approaches have been used to achieve the optimal configuration of solar PV-battery systems from the technical and economical perspective. In this paper, the technical algorithm for the optimal sizing is developed according to the concept of MDRed model to evaluate the reliability

of solar PV-battery system. The GA model attains the optimal size in terms of various degrees of reliability. A binary coded GA was introduced to solve the optimal capacity of solar PV and battery. Input data includes hourly data per year, solar irradiation by indirect power calculation, load power consumption and timeframe of battery DOD and SOC with respect to peak hours and off-peak hour's tariff charges. The flowchart of the GA process applied to PV-battery sizing problem with respect to MDRed modelling is illustrated in Figure 5. One of the key parameters that represent the battery sizing is the capacity of battery charging,  $P_{bat\_chg}$  and battery discharging,  $P_{bat\_dischg}$ . Based on Figure 5 and Table 7, the amount of maximum demand reduction (MDRed) is based on battery discharging capacity ( $P_{bat\_dischg}$ ) to maintain the maximum demand limit ( $P_{MD\_limit}$ ), in the presence and/or absence of generated PV power ( $P_{PV}$ ) during peak hours from 8.00 a.m. and 10.00 p.m. Battery charging capacity ( $P_{bat\_chg}$ ) will be in operation during off-peak hours in between 10.00 p.m. and 8.00 a.m. As per Figure 7, the battery energy management system works to monitor the net load continuously in the presence of solar PV and will immediately activate the battery operation to discharge if the new net load exceeds the MD limit. Besides that, the battery discharging will not take place if the new net load is below the MD limit. Besides that, as per Figure 7, the Battery Energy management system scenarios for MDRed modeling approach is based on any scenarios (efficient, intermittent or zero solar PV). Therefore, the proposed optimization method will deliver the optimal operation condition or optimal sizing of solar PV-battery in real time scenario.

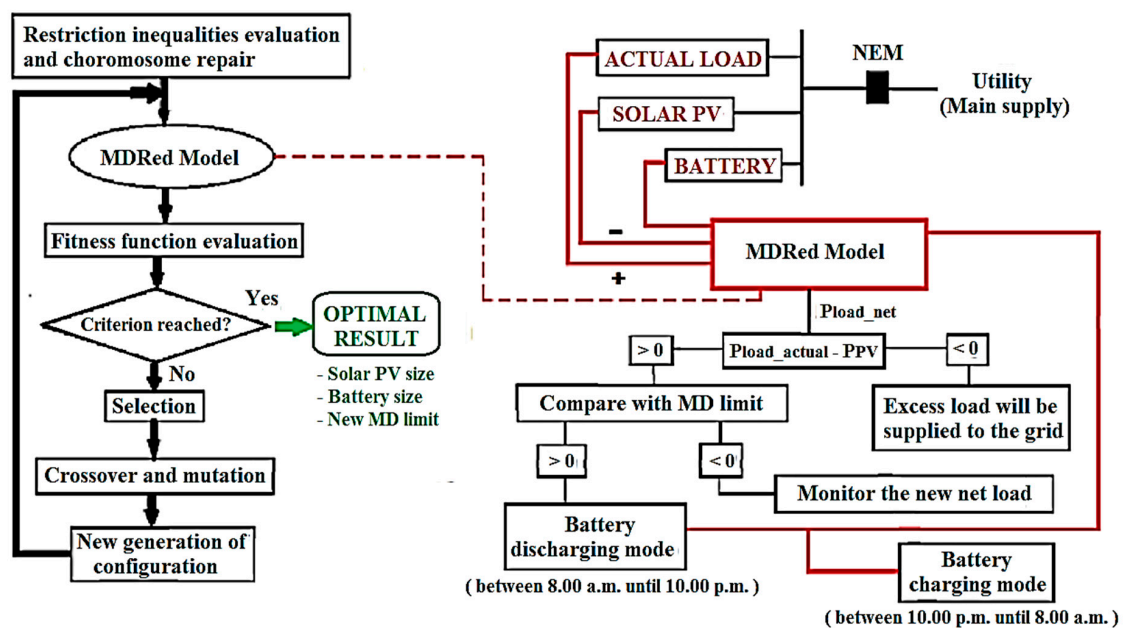






Figure 5. Flowchart of MDRed model for optimal sizing simulation using Genetic Algorithm.

**Table 7.** Battery Energy management system for MDRed modeling approach.

Scenario	Concept	Control Algorithm	Peak Hours [8.00 a.m.–10.00 p.m.]	Off Peak Hours [10.00 p.m.–8.00 a.m. ]
	Actual load below the MD limit $P_{load\_actual} < P_{MD\_limit}$	Solar PV		Efficient
Battery			PPV_surplus = $P_{load\_actual} - P_{PV}$ when $PPV > P_{load\_actual}$ [Battery will not operate]	[Battery will not change since 0% DOD]
Fully charged			DOD: 0%	
Actual load above the MD limit $P_{load\_actual} > P_{MD\_limit}$	Solar PV		Intermittent or Zero	
	Battery		$P_{load\_net} = [P_{load\_Actual} + P_{bat\_chg}] - [P_{PV} + P_{bat\_discha}]$ [Battery will discharge]	[Battery will change to achieve 0% DOD]
	Fully charged		DOD: >50%	

As per Equation (18), the generated PV power,  $P_{PV}$  will be supplied for self-consumption to reduce the actual load,  $P_{load\_actual}$ . Therefore, new net load,  $P_{load\_net}$  will be obtained. However, the battery will not discharge if the  $P_{load\_net}$  is below  $P_{MD\_limit}$ . Due to the intermittent solar irradiance during bad weather condition, the optimal battery sizing can be calculated using Equations (19) and (20) to cater for the MD limit. If the  $P_{load\_net}$  is above  $P_{MD\_limit}$ , the battery will discharge ( $P_{bat\_dischg}$ ) to maintain the required MD limit. During off-peak hours, the batteries will be charged ( $P_{bat\_chg}$ ) during off-peak hours until minimum DOD is reached. Therefore, new net load,  $P_{load\_net}$  can be calculated as:

[Condition #1:  $P_{MD\_limit} < P_{load\_net}$  with solar PV]:- Condition #1:  $P_{MD\_limit} < P_{load\_net}$  with solar PV

$$\int P_{load\_net} = \int P_{load\_actual} - \int P_{PV} \tag{18}$$

[Condition #2:  $P_{MD\_limit} > P_{load\_net}$  with solar PV]:-

$$P_{load\_net} = [P_{load\_actual} + P_{bat\_chg}] - [P_{PV} + P_{bat\_dischg}] \tag{19}$$

[Condition #3:  $P_{MD\_limit} > P_{load\_net}$  without solar PV]:-

$$P_{load\_net} = [P_{load\_actual} + P_{bat\_chg}] - [P_{bat\_dischg}] \tag{20}$$

The total load net consumption reduction will be based on sum of the new net load mainly due to generated PV power. Therefore, total load shaving ( $P_{load\_shave}$ ) can be calculated as:

$$\sum P_{load\_shave} = \sum P_{load\_actual} - \sum P_{PV} \tag{21}$$

MD reduction shaving varies according to system performance which mainly relies on total generated PV power and battery capacity. The excess PV power,  $P_{PV\_suplus}$  will be achieved when generated PV power is more than actual load and it can be calculated as: [Condition #4:  $P_{PV} > P_{load\_actual}$  with solar PV]:

$$P_{PV\_suplus} = \sum [P_{PV} - P_{load\_actual}] \tag{22}$$

The basic Return on Investment (ROI) is calculated based on payment of loan in regard to interest rate using total profit achieved using solar PV-battery system. The ROI can be calculated as:

$$ROI \text{ (in years)} = C_{load\_payment} / S_{yr\_shave} \tag{23}$$

## 5. System Optimization

As per Table 8, the system parameters used for GA optimization covers the technical and economical data of PV, inverter, converter and battery energy storage system. In this paper, the GA optimization gives an optimal sizing of solar PV and battery system without considering the lifespan cost of battery since replacement of battery will be neglected after completion of life span period.

**Table 8.** Detail of the components.

Component	Unit	PV-Inverter	Battery	Converter
Cost of the system	MYR (USD)/kW <sub>p</sub>	7000 (1600)		
	MYR (USD)/kWh	2200 (500)		
	MYR (USD)/kW	1100 (250)		
Lifespan	Years	21	12	
Efficiency	%	90	95	90
DOD	%		85	
O&M cost		5% of C <sub>PV_INV</sub>	10% of C <sub>BESS</sub>	
RC cost		5% of C <sub>PV_INV</sub>	10% of C <sub>BESS</sub>	
Interest Rate	%	7	7	7

### 5.1. Problem Formulation

The aim of this study is to attain an optimal sizing of a solar PV-battery system, which should be properly designed in terms of technical, economic and reliability measures subject to physical and operational constraints/strategies. The objective function of the optimization is to achieve the optimal sizing with respect to highest energy savings on maximum demand and net consumption.

#### 5.1.1. System Constraints

In this study, battery charging and discharging mechanism and the distribution lines are ideal. Besides that, the inverter efficiency, battery efficiency and manufacturers' round-trip efficiency is constant regardless of the operation period. Since the battery cost is very high, the life span cost or total cost of the new battery system will be set to zero after achieving the life span of the battery operation. For any period,  $t$ , the total power supply from the solar PV-battery system must supply the total demand with a certain reliability criterion. This relation can be represented by Equation (24) as follows:

$$P_{PV} + P_{Bat} \leq P_{load\_actual} \quad (24)$$

This minimizes the excess power supply to the grid since the self-consumption of PV power or existing net consumption rate [MYR 0.365 (USD 0.08)/kWh] will be higher than net metering rate [MYR 0.238 (USD 0.05)/kWh].

#### 5.1.2. Bounds of Design Variables

The proposed solar PV-battery system optimization parameters including the solar PV capacity,  $P_{PV\_kWp}$  and maximum demand limit,  $P_{MD\_limit}$  should be within a certain range:

$$\text{Load profile (Min)} < P_{PV\_kWp} < \text{Load profile (Max)} \quad (25)$$

$$\text{Load profile (Ave)} < P_{MD\_limit} < \text{Load profile (Max)} \quad (26)$$

The bounds of the design variable on PV and MD limit sizing is to maximize the self-consumption instead of surplus to the grid.

5.2. Validation of Numerical Results

Experimental data on PV model using indirect method is verified using a 50 kWp PV system. The experimental data and figure are shown in Figure 6 and Table 9 respectively. Based on the results, based on the indirect method of Equation (4), at 1000 W/m<sup>2</sup> of measured solar irradiance, a 50 kWp solar PV system only delivers up to 35 kW of actual PV power and 38 kW of PV modelled power.

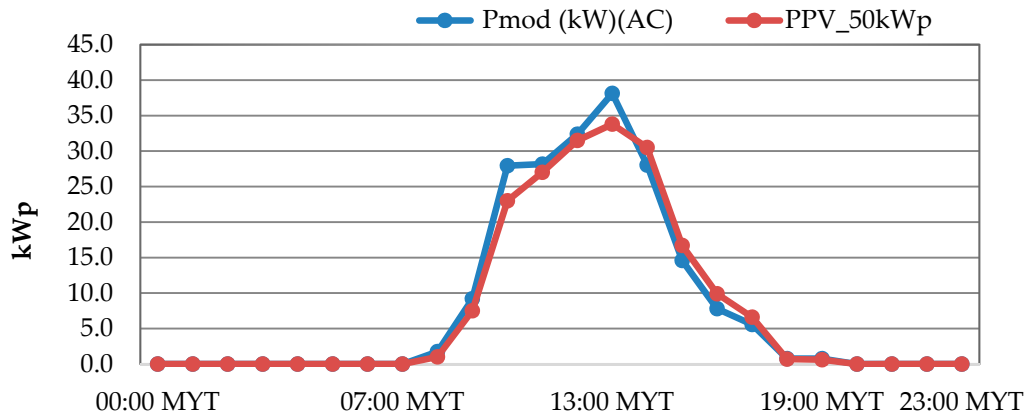


Figure 6. Modelled PV power (Indirect method).

Table 9. PV model validation data with 50 kWp PV system.

Time (Hr)	$P_{mod} = PPV\_Kwp * (G_s/G_{STC}) [1 - \gamma * (T_c - T_{STC})]$							$\frac{P_{PV\_rated}}{P_{PV\_kWp}/\eta_{inv}}$	50 kWp PV System (Actual)
	$G_s$ (W/m <sup>2</sup> )	$G_{STC}$ (W/m <sup>2</sup> )	$\gamma$	$T_c$ (DegC)	$T_{STC}$ (DegC)	$P_{mod}$ (In Per Unit)	$P_{mod}$ (kW) (DC)	PV Modelled Power,	Actual PV Generated Power
								$P_{mod}$ (KW)(DC)	$P_{PV\_Actual\_AC}$
00:00 MYT	0	1000	0.005	0.0	0.0	0.00	0.0	0.0	0.0
01:00 MYT	0	1000	0.005	0.0	0.0	0.00	0.0	0.0	0.0
02:00 MYT	0	1000	0.005	0.0	0.0	0.00	0.0	0.0	0.0
03:00 MYT	0	1000	0.005	0.0	0.0	0.00	0.0	0.0	0.0
04:00 MYT	0	1000	0.005	0.0	0.0	0.00	0.0	0.0	0.0
05:00 MYT	0	1000	0.005	0.0	0.0	0.00	0.0	0.0	0.0
06:00 MYT	0	1000	0.005	35.0	25.0	0.00	0.0	0.0	0.0
07:00 MYT	0	1000	0.005	38.0	25.0	0.00	0.00	0.0	0.0
08:00 MYT	42	1000	0.005	40.0	25.0	0.04	1.94	1.7	1.0
09:00 MYT	227	1000	0.005	45.0	25.0	0.20	10.22	9.2	7.5
10:00 MYT	690	1000	0.005	45.0	25.0	0.62	31.05	27.9	23.0
11:00 MYT	736	1000	0.005	55.0	25.0	0.63	31.28	28.2	27.0
12:00 MYT	872	1000	0.005	60.0	25.0	0.72	35.97	32.4	31.5
13:00 MYT	1027	1000	0.005	60.0	25.0	0.85	42.36	38.1	35.8
14:00 MYT	755	1000	0.005	60.0	25.0	0.62	31.14	28.0	30.5
15:00 MYT	393	1000	0.005	60.0	25.0	0.32	16.21	14.6	16.7
16:00 MYT	204	1000	0.005	55.0	25.0	0.17	8.67	7.8	9.9
17:00 MYT	141	1000	0.005	50.0	25.0	0.12	6.17	5.6	6.6
18:00 MYT	19	1000	0.005	45.0	25.0	0.02	0.86	0.8	0.7
19:00 MYT	18	1000	0.005	40.0	25.0	0.02	0.83	0.7	0.6
20:00 MYT	0	1000	0.005	0.0	0.0	0.00	0.0	0.0	0.0
21:00 MYT	0	1000	0.005	0.0	0.0	0.00	0.0	0.0	0.0
22:00 MYT	0	1000	0.005	0.0	0.0	0.00	0.0	0.0	0.0
23:00 MYT	0	1000	0.005	0.0	0.0	0.00	0.0	0.0	0.0

For this paper, load profile with actual MD load of 1050 kW has been used. Apart from that, two different phenomena of solar irradiance pattern with perfect data is used for solar PV-battery system integration to verify the MDRed scheme. For validation purposes, an MD limit of 750 kW and a PV-inverter rating of 1200 kWp are used to formulate the required battery capacity together with the financial data. Validation data is important to verify that the solar PV-battery system works according to MDRed scheme. In this paper, the MDRed control algorithm is based on a few conditions to achieve the new MD limit of 750 kW as shown in Table 10 and Figure 7.

Table 10. MDRed model validation data with solar PV-battery system.

$P_{MD\_Limit} = 750\text{ kW}$		MDRed scheme During Perfect Weather Condition (Sunny Day)				
Time (Hr)	Load Profile	PPV = 1200 kWp (Based on Equation (4))	Battery Capacity, $P_{bat\_kWh} = 48\text{ kWh}$		New Net Load $P_{load\_net}\text{ (kW)}$	Control Algorithm
	$P_{load\_Actual},\text{ kW}$		$P_{bat\_DOD}$	$P_{bat\_SOC}$		
00:00 MYT	390	0	0	-11	401	Condition #2
01:00 MYT	360	0	0	-11	371	
02:00 MYT	360	0	0	-11	371	
03:00 MYT	340	0	0	-11	351	
04:00 MYT	320	0	0	0	320	No operation
05:00 MYT	320	0	0	0	320	
06:00 MYT	310	0	0	0	310	
07:00 MYT	310	0	0	0	310	
08:00 MYT	520	46.6	0	0	473	Condition #1
09:00 MYT	1050	252.0	48	0	750	Condition #2
10:00 MYT	1020	724.5	0	0	296	Condition #1
11:00 MYT	990	772.8	0	0	217	
12:00 MYT	900	915.6	0	0	-16	Condition #4
13:00 MYT	940	1078.4	0	0	-138	
14:00 MYT	980	675.2	0	0	305	Condition #1
15:00 MYT	970	412.7	0	0	557	
16:00 MYT	970	214.2	6	0	750	Condition #2
17:00 MYT	880	148.1	0	0	732	Condition #1
18:00 MYT	630	20.0	0	0	610	
19:00 MYT	580	0	0	0	580	MD monitoring
20:00 MYT	620	0	0	0	620	
21:00 MYT	540	0	0	0	540	
22:00 MYT	510	0	0	0	510	
23:00 MYT	500	0	0	-11	511	Condition #2

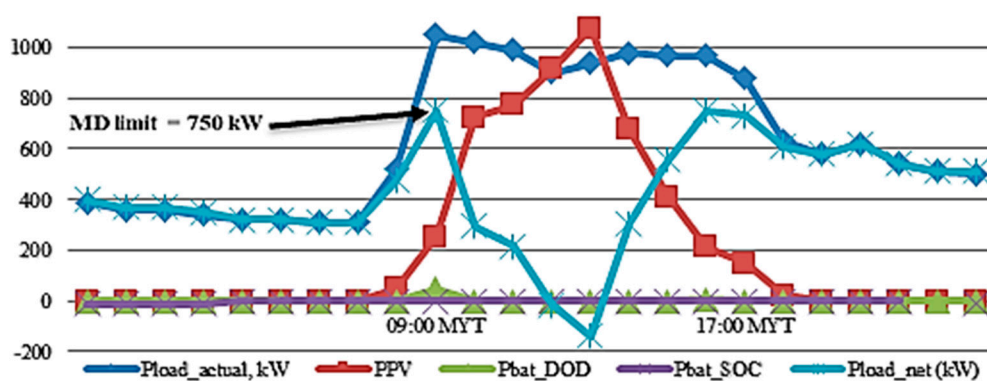


Figure 7. MDRed model validation graph (for Table 10 data.)

Apart from that, the MDRed model shows the control algorithm battery management system to cater for MD reduction with the support of solar PV power at preset MD limit. However, the rated sizing of solar PV-battery system is higher than the formulated optimal values since the calculation of rated values are based on Equations (5) and (8). The total savings is the combination of net consumption savings at rate of MYR 0.365/kWh, surplus power supplied to the grid at rate of MYR 0.238/kWh and maximum demand savings at rate of MYR 30.3/kW. Based on assumption, the annual total savings is calculated for 12 months period. Besides that, the cost of the solar PV-battery system will increase drastically due to additional cost of O&M and replacement apart from the interest rate of 7% incurred to the total cost of the system.



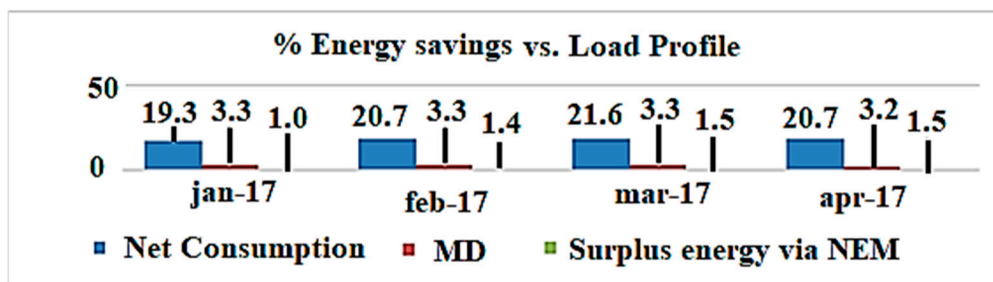
Control algorithm of MDRed modeling scheme falls under any of the conditions applied on Table 11 where battery management system works based on maximum demand to maintain the MD limit setting of 750 kW. However, battery discharging mode will take place in between 8.00 a.m. until 10.00 p.m. and battery charging mode in between 10.01 p.m. until 7.59 a.m. everyday with respect to the MD limit of different load profiles.

**Table 11.** Summary of validation data at 750 kW MD limit setting.

Control Algorithm	Status	PV Status	Numerical Formula
Condition #1	$P_{MD\_limit} < P_{load\_net}$	Yes	$\int P_{load\_net} = \int P_{load\_actual} - \int P_{PV}$
Condition #2	$P_{MD\_limit} > P_{load\_net}$	Yes	
Condition #3	$P_{MD\_limit} > P_{load\_net}$	No	$P_{load\_net} = [P_{load\_actual} + P_{bat\_chg}] - [P_{PV} + P_{bat\_dischg}]$
Condition #4	$P_{PV} > P_{load\_actual}$	Yes	$P_{load\_net} = [P_{load\_actual} + P_{bat\_chg}] - [P_{bat\_dischg}]$ $P_{PV\_surplus} = P_{PV} - P_{load\_actual}$

### 6. Optimization Results

Based on Figure 8, on average 25% of total energy savings can be achieved on a monthly basis which can be used to calculate the Return on Investment (ROI). GA optimization results on MDRed modelling revealed that optimal sizing of solar PV-battery system contributed to energy bill savings up to 20% of net consumption via solar PV self-consumption, 3% of maximum demand (MD) via MD shaving and 2% of surplus power supplied to grid via net energy metering (NEM) in regards to Malaysian electricity tariff scheme and cost of overall system.



**Figure 8.** Percentage of energy savings based on load profile.

GA optimization results from 10 population sizes and via 300 iterations are shown in Figure 9. In this paper, GA optimization studies is based on 21-years of load pattern assumption to cater for optimal sizing of solar PV-battery system. Since all actual MDs are captured during peak hours between 8.30 a.m. and 10.00 a.m., it does not show huge differences in solar PV-battery optimal sizing. Therefore, the total energy savings achieved in the range of 23% to 26% with the use of solar PV-battery system. However, the differences in optimal sizing are influenced by the load margin in between maximum demand and average load consumed during peak hours throughout the month.

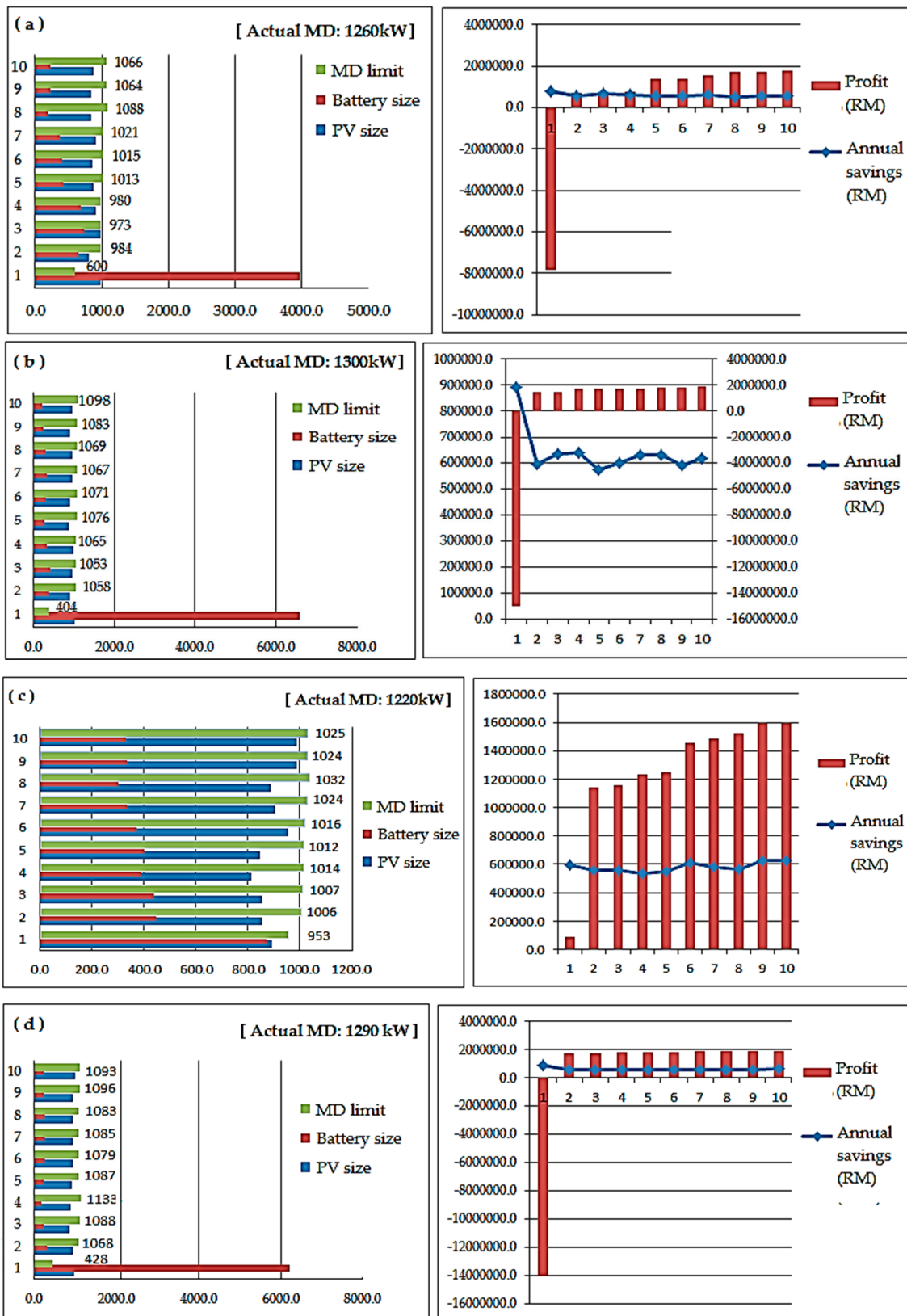


Figure 9. GA optimization results of difference load profiles: (a) Jan-17 [Actual MD: 1260 kW], (b) Feb-17 [Actual MD: 1300 kW], (c) Mar-17 [Actual MD: 1220 kW] and (d) Apr-17 [Actual MD: 1290 kW].

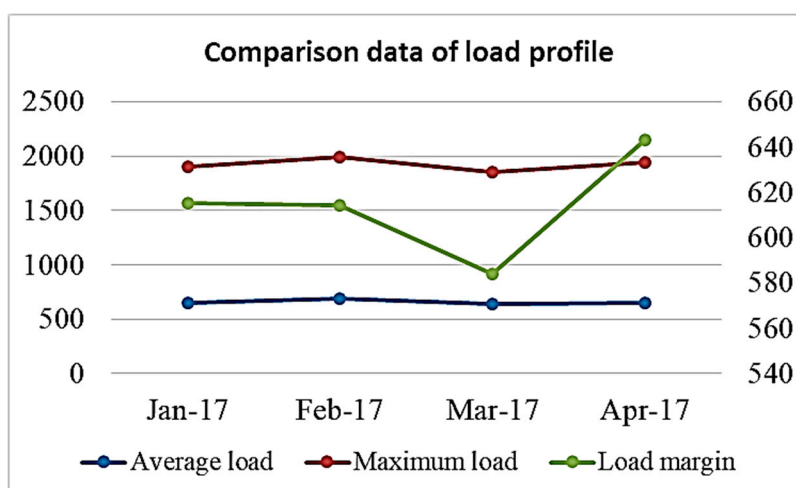
The surplus energy savings under Net Energy Metering (NEM) achieved at minimal level due to low NEM billing rate compared to net consumption rate. The commercial sector may experience

fluctuating load pattern with different ranges of maximum demand. Therefore, the optimal solar PV-battery sizing at various load pattern falls in between 870 kWp and 970 kWp of solar PV and 230 kWh up to 330 kWh of total battery capacity. In addition, the new MD limit has been achieved in the range 1025 kW and 1098 kW of MD reduction using solar PV-battery system.

Load profile of the system influence the MDRed modelling optimal sizing on the solar PV-battery system using a GA algorithm. The load profile of the system influences the MDRed modelling optimal sizing on the solar PV-battery system using the GA algorithm. Based on Table 12, the month of March 2017 is proven to give the best optimal sizing for solar PV-battery system with highest percentage of total energy savings. This is due to the load profile changes especially the load margin in between maximum and average loading for every month. Based on Figure 10, load margin and maximum demand of March 2017 is lowest compared to other months which gives the significant impact on MD shaving compared to net consumption savings. Therefore, the acceptable sizing of solar PV and battery capacity will be 986 kWp and 330 kWh respectively. This will be the best choice to allow the MDRed model to work efficiently at any load pattern to achieve high MD load reduction with yearly energy savings up to MYR 600,000.

**Table 12.** GA optimization results for different load profiles.

Load Profile (Actual MD)	Energy Savings (MYR)	Percentage of Total Energy Savings (%)	Optimal Sizing		MD Limit (kW)
			PV (kWp)	Battery (kWh)	
Jan-17 [1260 kW]	42,534.14	23.7	869	228	1062
Feb-17 [1300 kW]	46,661.90	25.4	970	225	1098
Mar-17 [1220 kW]	47,021.84	26.5	986	330	1025
Apr-17 [1290 kW]	46,850.45	25.4	980	232.3	1093



**Figure 10.** Comparison data analysis of load profile.

## 7. Conclusions

The proposed MDRed modeling scheme works as an optimization model which focuses on maximum demand (MD) shaving. This reduces the maximum demand and net consumption costs when using solar PV generation and battery systems. GA optimization results on MDRed modelling reveal that optimal sizing of the solar PV-battery system contributed to energy bill savings up to 20% of net consumption via solar PV self-consumption, 3% of maximum demand (MD) via MD shaving and 2% of surplus power supplied to grid via net energy metering (NEM) in regards to the Malaysian electricity tariff scheme and cost of the overall system. In addition, the optimal battery sizing will be

based on the amount of MD savings annually with respect to the cost of the battery system including the bi-directional converters. If the load demand is reduced as a result of effective energy management systems in place or low production in the factory or buildings, re-optimization may be useful to increase or maintain the current solar PV-battery size to maximize the net consumption and MD savings. In future, with higher demand for energy storage system and reduction in battery prices will lead to the realization of a higher rate of maximum demand shaving for commercial and industrial sector via MDRed modeling.

**Author Contributions:** Conceptualization, G.S. and P.S.; Methodology, V.K.R.; Validation, all co-authors; Formal Analysis, J.B.H.-N.; Investigation, P.S.; Writing-Original Draft Preparation, G.S., V.K.R. and P.S.; Writing-Review & Editing, P.S., P.K., and L.Z.; Supervision, P.S., L.Z. and P.K.; Funding Acquisition, L.Z. and P.K. All co-authors contributed substantially to the work.

**Funding:** This research received partial funding from EEEIC International, Poland.

**Acknowledgments:** The authors acknowledge the financial assistance from the Ministry of Higher Education (MOHE), Malaysia for the support to embark on renewable energy research.

**Conflicts of Interest:** The authors declare no conflict of interest.

## Nomenclature

MDRed	Maximum demand reduction
PV	Photovoltaic
BESS	Battery energy storage system
DOD	Depth of Discharge (%)
SOC	State of Charge (%)
MD	Maximum demand
$P_{load\_net}$	Net consumption (kW)
$P_{MD}$	Maximum demand (kW)
ROI	Return on Investment (%)
$P_{conv}$	Power rating of the converter (kW)
$P_{Bat}$	Rated capacity of the battery (kWh)
$E_{bat}$	Optimal size of the battery (kWh)
$U_{PV}$	Unit cost of PV array (MYR/kWp)
$C_{total\_PV}$	Cumulative cost of PV system (MYR)
$C_{O\&M\_PV}$	O&M cost of PV system (MYR)
$C_{RC\_PV}$	Replacement cost of PV system (MYR)
$C_{Bat}$	Cumulative cost of batteries (MYR)
$U_{Bat}$	Unit cost of the batteries (MYR/kWh)
$C_{LS\_bat}$	Cost of battery lifespan (MYR)
$U_{Conv}$	Unit cost of the converter (kW)
$P_{shave\_MD}$	Maximum demand shaving load (kW)
$S_{yr\_shave}$	Total energy savings annually (MYR)
$P_{load\_shave}$	Total net consumption savings load (kWh)
$P_{PV\_STC}$	Rated PV power at Standard Testing Condition (kWp)
$C_{bill}$	Cumulative amount of net consumption and MD (MYR)
$C_{net\_kWh}$	Cumulative amount of net consumption (MYR)
$C_{MD\_kW}$	Cumulative amount of Maximum demand (MYR)
$C_{PV\_inv}$	Cumulative cost of optimal PV array (MYR)
$C_{BESS}$	Cumulative cost of BESS and converter MYR)
$C_{full\_loan}$	Cumulative cost of overall PV-battery system (MYR)
$U_{load\_net}$	Unit price of net consumption (RM/kWh)
$U_{MD}$	Unit price of maximum demand (RM/kW)
$E_{load\_net}$	Total net consumption recorded (kWh)
$E_{MD}$	Total maximum demand recorded (kW)
$P_{PV\_rated}$	Rated dc output power of PV array (kWp)

$P_{PV\_kWp}$	DC output power of PV array (kWp)
$\eta_{inv}$	Conversion efficiency of inverter (%)
$\eta_B$	Round trip efficiency of the converter (%)
$P_{MD\_limit}$	Maximum demand limit (kW)
$P_{load\_actual}$	Actual consumed load (kWh)
$P_{bat\_chg}$	Battery charging load (kWh)
$P_{bat\_dischg}$	Battery discharging load (kWh)
$P_{PV}$	Solar PV generation load (kWh)
$P_{mod}$	Solar PV modelled power (per unit)
$C_{total\_BESS}$	Capital cost of overall BESS (MYR)
$C_{o\&m\_BESS}$	O&M cost of BESS (MYR)
$C_{rep\_BESS}$	Replacement cost of BESS (MYR)
$C_{disp\_bat}$	Disposal cost of BESS (MYR)
$P_{PV\_surplus}$	Surplus PV power (kWh) (kWh)
$E_{surplus}$	Unit price of surplus PV (MYR/kWh)
$G_s$ (t)	Measured solar irradiance ( $W/m^2$ )
$\gamma$	PV module temperature correction ( $\%/^{\circ}C$ )

## References

1. ExxonMobil Energy. *Outlook for Energy: A View to 2040*; ExxonMobil Energy: Irving, TX, USA, 2013.
2. Wu, H.; Wang, S.; Zhao, B.; Zhu, C. Energy management and control strategy of a grid-connected PV/battery system. *Int. Trans. Electr. Energy Syst.* **2015**, *25*, 1590–1602. [[CrossRef](#)]
3. Castillo, A.; Gayme, D.F. Grid-scale energy storage applications in renewable energy integration: A survey. *Energy Conversat. Manag.* **2014**, *87*, 885–894. [[CrossRef](#)]
4. Coordinated Low Emissions Assistance Network. *Review of Networks and Platforms for Low Emission and Climate Compatible Development Planning*; Coordinated Low Emissions Assistance Network: Witzwort, Germany, 2011.
5. The Sustainable Energy Development Authority of Malaysia. Available online: <http://www.seda.gov.my/> (accessed on 21 September 2014).
6. TNB. *Electricity Tariff Schedule*; Tenaga Nasional Berhad: Kuala Lumpur, Malaysia, 2014.
7. Braam, F.; Hollinger, R.; Engesser, L.M.; Müller, S.; Kohrs, R.; Wittwer, C. Peak shaving with photovoltaic-battery systems. In Proceedings of the Innovative Smart Grid Technologies Conference Europe, Istanbul, Turkey, 12–15 October 2014; pp. 1–5.
8. Wang, B.; Zarghami, M.; Vaziri, M. Energy management and peak-shaving in grid-connected photovoltaic systems integrated with battery storage. In Proceedings of the North American Power Symposium, Denver, CO, USA, 18–20 September 2016; pp. 1–5.
9. Pimm, J.A.; Cockerill, T.T.; Taylor, P.G. The potential for peak shaving on low voltage distribution networks using electricity storage. *J. Energy Storage* **2018**, *16*, 231–242. [[CrossRef](#)]
10. Ru, Y.; Kleissl, J.; Martinez, S. Storage size determination for grid-connected photovoltaic systems. *IEEE Trans. Sustain. Energy* **2013**, *4*, 68–81. [[CrossRef](#)]
11. Linssen, J.; Stenzel, P.; Fleer, J. Techno-economic analysis of photovoltaic battery systems and the influence of different consumer load profiles. *Appl. Energy* **2017**, *185*, 2019–2025. [[CrossRef](#)]
12. Hanna, R.; Kleissl, J.; Nottrott, A.; Ferry, M. Energy dispatch schedule optimization for demand charge reduction using a photovoltaic-battery storage system with solar forecasting. *Sol. Energy* **2014**, *103*, 269–287. [[CrossRef](#)]
13. Moghimi, M.; Garmabdari, R.; Stegen, S.; Lu, J. Battery energy storage cost and capacity optimization for university research center. In Proceedings of the IEEE/IAS 54th Industrial and Commercial Power Systems Technical Conference (I&CPS), Niagara Falls, ON, Canada, 7–10 May 2018.
14. Liu, X.; Gao, B.; Zhu, Z.; Tang, Y. Non-cooperative and cooperative optimisation of battery energy storage system for energy management in multi-microgrid. *IET Gener. Transm. Distrib.* **2018**, *12*, 2369–2377. [[CrossRef](#)]

15. Dongol, D.; Feldmann, T.; Schmidt, M.; Bollin, E. A model predictive control based peak shaving application of battery for a household with photovoltaic system in a rural distribution grid. *Sustain. Energy Grids Netw.* **2018**, *16*, 1–13. [[CrossRef](#)]
16. Subramani, G.; Ramachandaramurthy, V.K.; Padmanaban, S.; Mihet-Popa, L.; Blaabjerg, F.; Guerrero, J.M. Grid-Tied Photovoltaic and Battery Storage Systems with Malaysian Electricity Tariff—A Review on Maximum Demand Shaving. *Energies* **2017**, *10*, 1884. [[CrossRef](#)]
17. Chauhan, A.; Saini, R.P. A review of an integrated renewable energy system-based power generation for stand-alone applications: Configurations, storage options, sizing methodologies and control. *Renew. Sustain. Energy Rev.* **2014**, *38*, 99–120. [[CrossRef](#)]
18. Bilal, B.O.; Sambou, V.; Kebe, C.M.F.; Ndiaye, P.A.; Ndongo, M. Methodology to Size an Optimal Stand-Alone PV/wind/diesel/battery System Minimizing the Levelized Cost of Energy and the CO<sub>2</sub> Emissions. *Energy Procedia* **2012**, *14*, 1636–1647. [[CrossRef](#)]
19. Tudu, B.; Majumder, S.; Mandal, K.K.; Chakraborty, N. Optimal unit sizing of stand-alone renewable hybrid energy system using bees algorithm. In Proceedings of the Energy, Automation, and Signal (ICEAS), Bhubaneswar, India, 28–30 December 2011.
20. Maleki, A.; Askarzadeh, A. Optimal sizing of a PV/wind/diesel system with battery storage for electrification to an off-grid remote region: A case study of Rafsanjan, Iran. *Sustain. Energy Technol. Assess.* **2014**, *7*, 147–153. [[CrossRef](#)]
21. Maleki, A.; Ameri, M.; Keynia, F. Scrutiny of multifarious particle swarm optimization for finding the optimal size of a PV/wind/battery hybrid system. *Renew. Energy* **2015**, *80*, 552–563. [[CrossRef](#)]
22. Gupta, R.A.; Kumar, R.; Bansal, A.K. BBO-based small autonomous hybrid power system optimization incorporating wind speed and solar radiation forecasting. *Renew. Sustain. Energy Rev.* **2015**, *41*, 1366–1375. [[CrossRef](#)]
23. Alsayed, M.; Cacciato, M.; Scarcella, G.; Scelba, G. Design of hybrid power generation systems based on multi-criteria decision analysis. *Sol. Energy* **2014**, *105*, 548–560. [[CrossRef](#)]
24. Lara-Fanego, V.; Ruiz-Arias, J.A.; Pozo-Vazquez, D.; Santos-Alamillos, F.J.; Tovar-Pescador, J. Evaluation of the WRF model solar irradiance forecasts in Andalusia (southern Spain). *Sol. Energy* **2012**, *86*, 2200–2217. [[CrossRef](#)]
25. Rus-Casas, C.; Aguilar, J.D.; Rodrigo, P.; Almonacid, F.; Perez-Higueras, P.J. Classification of methods for annual energy harvesting calculations of photovoltaic generators. *Energy Convers. Manag.* **2014**, *78*, 527–536. [[CrossRef](#)]
26. Ghazali, A.; Salleh, E.; Haw, L.C.; Sohif, M.; Sopian, K.B. Feasibility of vertical photovoltaic system on a high-rise building in Malaysia: Performance evaluation. *Int. J. Low Carbon Technol.* **2017**, *12*, 1–9. [[CrossRef](#)]
27. Divya, K.C.; Østergaard, J. Battery energy storage technology for power systems—An overview. *Electr. Power Syst. Res.* **2009**, *79*, 511–520. [[CrossRef](#)]
28. Bulman, P. Tesla’s Powerwall battery production requires ‘super-charged’ supply chain. *Renew. Energy Focus* **2015**, *16*, 126–127. [[CrossRef](#)]
29. Akhil, A.A.; Huff, G.; Currier, A.B.; Kaun, B.C.; Rastler, D.M.; Chen, S.B.; Cotter, A.L.; Bradshaw, D.T.; Gauntlett, W.D. *DOE/EPRI Electricity Storage Handbook in Collaboration with NRECA*; Sandia National Lab.: Albuquerque, NM, USA, 2015.
30. Poullickas, A. A comparative overview of large-scale battery systems for electricity storage. *Renew. Sustain. Energy Rev.* **2013**, *27*, 778–788. [[CrossRef](#)]
31. Luo, X.; Wang, J.; Dooner, M.; Clarke, J. Overview of current development in electrical energy storage technologies and the application potential in power system operation. *Appl. Energy* **2015**, *137*, 511–536. [[CrossRef](#)]
32. Arul, P.G.; Ramachandaramurthy, V.K.; Rajkumar, R.K. Control strategies for a hybrid renewable energy system: A review. *Renew. Sustain. Energy Rev.* **2015**, *42*, 597–608. [[CrossRef](#)]
33. Aneke, M.; Wang, M. Energy storage technologies and real-life applications—A state of the art review. *Appl. Energy* **2016**, *179*, 350–377. [[CrossRef](#)]

