



Aalborg Universitet

AALBORG UNIVERSITY  
DENMARK

## Waiting time to surgery and pancreatic cancer survival

*A nationwide population-based cohort study*

Kirkegård, Jakob; Mortensen, Frank Viborg; Hansen, Carsten Palnæs; Mortensen, Michael Bau; Sall, Mogens; Fristrup, Claus

*Published in:*  
European Journal of Surgical Oncology

*DOI (link to publication from Publisher):*  
[10.1016/j.ejso.2019.05.029](https://doi.org/10.1016/j.ejso.2019.05.029)

*Creative Commons License*  
CC BY-NC-ND 4.0

*Publication date:*  
2019

*Document Version*  
Accepted author manuscript, peer reviewed version

[Link to publication from Aalborg University](#)

*Citation for published version (APA):*  
Kirkegård, J., Mortensen, F. V., Hansen, C. P., Mortensen, M. B., Sall, M., & Fristrup, C. (2019). Waiting time to surgery and pancreatic cancer survival: A nationwide population-based cohort study. *European Journal of Surgical Oncology*, 45(10), 1901-1905. <https://doi.org/10.1016/j.ejso.2019.05.029>

### General rights

Copyright and moral rights for the publications made accessible in the public portal are retained by the authors and/or other copyright owners and it is a condition of accessing publications that users recognise and abide by the legal requirements associated with these rights.

- ? Users may download and print one copy of any publication from the public portal for the purpose of private study or research.
- ? You may not further distribute the material or use it for any profit-making activity or commercial gain
- ? You may freely distribute the URL identifying the publication in the public portal ?

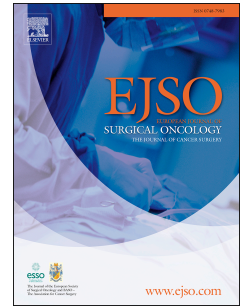
### Take down policy

If you believe that this document breaches copyright please contact us at [vbn@aub.aau.dk](mailto:vbn@aub.aau.dk) providing details, and we will remove access to the work immediately and investigate your claim.

# Accepted Manuscript

Waiting time to surgery and pancreatic cancer survival: A nationwide population-based cohort study

Jakob Kirkegård, Frank Viborg Mortensen, Carsten Palnæs Hansen, Michael Bau Mortensen, Mogens Sall, Claus Fristrup



PII: S0748-7983(19)30467-6

DOI: <https://doi.org/10.1016/j.ejso.2019.05.029>

Reference: YEJSO 5374

To appear in: *European Journal of Surgical Oncology*

Received Date: 30 March 2019

Revised Date: 16 May 2019

Accepted Date: 27 May 2019

Please cite this article as: Kirkegård J, Mortensen FV, Hansen CarstenPalnæs, Mortensen MB, Sall M, Fristrup C, Waiting time to surgery and pancreatic cancer survival: A nationwide population-based cohort study, *European Journal of Surgical Oncology* (2019), doi: <https://doi.org/10.1016/j.ejso.2019.05.029>.

This is a PDF file of an unedited manuscript that has been accepted for publication. As a service to our customers we are providing this early version of the manuscript. The manuscript will undergo copyediting, typesetting, and review of the resulting proof before it is published in its final form. Please note that during the production process errors may be discovered which could affect the content, and all legal disclaimers that apply to the journal pertain.

**Waiting time to surgery and pancreatic cancer survival: A nationwide population-based cohort study**

**Short title:** Wait time to pancreatic surgery

**Authors:**

Jakob Kirkegård<sup>1</sup>, Frank Viborg Mortensen<sup>1</sup>, Carsten Palnæs Hansen<sup>2</sup>, Michael Bau Mortensen<sup>3</sup>, Mogens Sall<sup>4</sup>, Claus Frstrup<sup>3,5</sup>

**Affiliations:**

<sup>1</sup> Department of Surgery, Section for Hepato-Pancreato-Biliary Surgery, Aarhus University Hospital, Aarhus, Denmark

<sup>2</sup> Department of Surgery, Section for Hepato-Pancreato-Biliary Surgery and Transplantation, Rigshospitalet, Copenhagen, Denmark

<sup>3</sup> Department of Surgery, Odense University Hospital, Odense, Denmark

<sup>4</sup> Department of Surgery, Aalborg University Hospital, Aalborg, Denmark

<sup>5</sup> Danish Pancreatic Cancer Database

**Correspondence:** Jakob Kirkegård; Department of Surgery, HPB Research Unit; Aarhus University Hospital; Palle Juul-Jensens Boulevard 99; 8200 Aarhus N; Denmark; Mail: jakob.kirkegaard@auh.rm.dk / Phone: +45 78 45 00 00

**Declarations of interest:** None declared.

**Funding:** This research did not receive any specific grant from funding agencies in the public, commercial, or not-for-profit sectors.

**Authorship contribution:**

Study design and conception: CF

Acquisition, analysis, and interpretation of data: JK, FVM, CPH, MBM, MS, CF

Manuscript drafting: JK, FVM, CF

Critical revisions of manuscript: JK, FVM, CPH, MBM, MS, CF

All authors approved the final paper.

ACCEPTED MANUSCRIPT

**ABSTRACT****Introduction:**

The effect of waiting time to surgery on survival in pancreatic cancer patients is unclear. We examined this association in a nationwide population-based cohort study.

**Materials and Methods:**

A nationwide population-based cohort study of all patients undergoing surgery for pancreatic cancer (resection or a palliative procedure) registered in the Danish Pancreatic Cancer Database from May 2011 to May 2016. We defined waiting time to surgery in two ways: 1) from the date of entry into the National Cancer Pathway to the date of surgery and 2) from the date of the last preoperative computed tomography (CT) or positron emission tomography (PET-CT) scan to the date of surgery. Waiting time was grouped into three groups: <28 days (<4 weeks), 28-55 days (4-8 weeks), and  $\geq 56$  days ( $\geq 8$  weeks). We calculated median survival with associated 95% confidence intervals (CIs) for patients undergoing resection and for patients undergoing a palliative procedure.

**Results:**

We included 873 patients. Mean age was 67 years (range: 35-86 years). Resection was performed in 701 patients (80%); the remaining 172 patients (20%) underwent an explorative laparotomy or palliative surgery. 652 patients (75%) had a registration in the National Cancer Pathway (median waiting time: 31 days, and 818 patients (94%) had registration of a preoperative CT or PET-CT scan (median waiting time: 32 days). We saw similar resection rates (~80%) and median survival (~22 months) in all three groups.

**Conclusion:**

Waiting time to surgery did not affect survival in patients undergoing surgery for pancreatic cancer.

**Keywords:**

Pancreatic Neoplasms; General Surgery; Survival; Prognosis

ACCEPTED MANUSCRIPT

## 1. INTRODUCTION

Pancreatic cancer is a highly fatal malignancy and projected to be the second leading cause of cancer-related deaths by 2030.[1] The majority of pancreatic cancer patients present with unresectable disease at the time of diagnosis.[2] As surgery is the only chance of cure, irresectability has a profound effect on the prognosis, leading to a dismal 5-year survival rate of less than 10%.[3]

In cancer surgery, waiting time from diagnosis to surgery is perceived to be an important quality indicator. In Denmark, national measures to facilitate prompt cancer surgery has been implemented, such as the National Cancer Pathway.[4] These measures are, however, associated with substantial costs. Furthermore, it is unclear if survival from pancreatic cancer is influenced by the time elapsed between diagnosis and surgery. Previous studies have suggested that waiting time to surgery does not alone influence survival.[5-7] However, these studies were all conducted in small populations, and findings from one of the studies were ambiguous.[6] In contrast, a major cohort study from the United States found that patients operated in the period one to two weeks following diagnosis had a worse survival compared with the rest of the population.

On the one hand, increasing waiting time may render the tumor unresectable, as most pancreatic cancers have an aggressive biology.[3] On the other hand, political demands to lower the waiting time may impose unresolvable burdens on healthcare systems. Therefore, to guide political decision-making, the impact of waiting time to surgery on pancreatic cancer survival requires clarification.

## 2. MATERIALS AND METHODS

### 2.1 Setting and data sources

We conducted a nationwide, population-based cohort study of all patients undergoing surgery for pancreatic cancer (resection or a palliative procedure) registered in the Danish Pancreatic Cancer Database from May 2011 to May 2016. The Danish Pancreatic Cancer Database was established

in 2011 and contains information such as date of diagnosis, tumor stage, comorbidity, and cancer-directed treatment.[8] In 2014, the completeness of data in the Danish Pancreatic Cancer Database was 83%. Since then, both historic and new data in the Danish Pancreatic Cancer Database has been enhanced with data from the Danish Civil Registration System,[9] the Danish National Pathology Registry,[10] and the Danish National Patient Registry.[11] Information from these registries can be linked at an individual level using the civil personal registration number, which is a unique 10-digit identification number assigned to all Danish residents at birth or immigration. This has improved the completeness of data in the Danish Pancreatic Cancer Database. Based on the clinical validation of the latest data, the completeness is above 95%

## 2.2 Study population

We initially identified all patients registered with a pancreatic cancer diagnosis in the Danish Pancreatic Cancer Database during the study period (n=4,251). We excluded patients who did not undergo surgery (n=3,259), without a postoperative specimen registered in the Danish National Pathology Registry (n=31), and patients receiving neoadjuvant chemotherapy (n=88), thus leaving a study population of 873 patients. The initial treatment plan from the multidisciplinary conference was available for 2951 patients (69%) and for 786 (90%) of the study population. For flowchart, see the Supplementary Information (Table A.1).

## 2.3 Definition of waiting time to surgery

We defined waiting time to surgery in two ways. *First*, we calculated the time from the date of entry into the National Cancer Pathway to the date of surgery. In 2009, The National Cancer Pathways were implemented in Denmark to ensure timely cancer diagnosis and treatment within a prespecified time interval, which is based on the type of cancer.[4] For example, pancreatic cancer patients with a potentially resectable tumor are entitled to be operated within 10 days of decision to offer surgical treatment. As the National Cancer Pathway is not activated after neoadjuvant oncological treatment, an extended time before surgery was expected in these patients, which



were therefore excluded. *Second*, we calculated the time to surgery from the date of the last preoperative computed tomography (CT), or positron emission tomography/computed tomography (PET-CT) scan to the date of surgery. Patients with missing information on waiting time were excluded from the analysis. Waiting time was grouped into three groups: less than 28 days (<4 weeks), 28-55 days (4-8 weeks), and 56 days or longer ( $\geq 8$  weeks).

## **2.4 Statistical analysis**

Descriptive variables are summarized using means and proportions. For each of the three waiting time groups, we calculated the resection rate, defined as the proportion of patients undergoing resection divided by the total number of patients. To examine the impact of waiting time to surgery on survival, we calculated median survival with associated 95% confidence interval (CI) for patients undergoing resection and for patients undergoing a palliative procedure. Survival was estimated according to the Kaplan-Meier estimator. For the survival analyses, we followed patients from the date of surgery to death, emigration, or study end (31 October, 2017) whichever occurred first. Statistical analyses were performed using Stata version 15 (StataCorp LP, College Station, TX, USA).

## **2.5 Ethical considerations**

This study was approved by the Danish Data Protection Agency, Region of Southern Denmark (j.no. 18/24246). According to Danish law, ethical permission is not required to registry-based studies.

# **3. RESULTS**

## **3.1 Descriptive characteristics**

We included 873 patients undergoing surgery for pancreatic cancer during the study period. Mean age was 67 years (range: 35-86 years), and approximately half were men (Table 1). The vast majority (92%) had a ductal adenocarcinoma. Resection was performed in 701 patients (80%); the remaining 172 patients (20%) underwent an explorative laparotomy or palliative surgery. Among the 701 patients undergoing resection, 484 (69%) had a Whipple procedure (Table 2). Seventy-four percent of the patients had stage IIb or stage III disease at pathological examination. We had information on preoperative T- and N-stage in approximately one-third of the population. There were no differences in the distribution of T- or N-stages regarding waiting time to surgery (Table 4).

## 3.2 Waiting time

### 3.2.1 National Cancer Pathway

In total, 652 patients (75%) had a registration in the National Cancer Pathway. Median waiting time to surgery was 31 days. Eighty-eight percent of the patients were resected within 55 days from diagnosis (Table 3). The proportion of patients older than 70 years was higher among patients waiting 28-55 days (45%) and 56 days or longer (53%) compared to patients waiting less than 28 days (37%). There was no difference in sex or Charlson Comorbidity Index score between the three groups. Resection rates and median survival were approximately the same in all three groups (Table 3 and Figure 1).

### 3.2.2 Time from last CT/PET-CT

In total, 818 patients (94%) had registration of a preoperative CT and PET-CT scan in the Danish National Patient Registry. Median waiting time to surgery was 32 days. Tumor was resected in 91% of the patients within 55 days from diagnosis (Table 3). There was no sex difference between the three waiting groups, but the proportion of patients older than 70 years was higher among those waiting 28-55 days (43%) and 56 days or longer (51%) compared to patients who waited less than 28 days (36%), and so was severe comorbidity in the three groups (26%, 29% and 17%,

respectively). Resection rates and median survival were approximately the same in all three groups (Table 4 and Figure 2).

### 3.2.3 Multidisciplinary conference

Based on the partial data from the multidisciplinary conference, 888 patients were scheduled for surgery. Of these, 670 (75%) had tumor resection, 116 (13%) exploration / palliative procedure, and 102 (11%) never made it to surgery. Of these 102 patients, 51 (50%) had a new CT within 6 weeks of the multidisciplinary conference, whereas the remaining 51 patients had no further imaging within 6 weeks.

## 4. DISCUSSION

In the present study of 873 patients undergoing resection or palliative surgery for pancreatic cancer within 8 weeks from diagnosis, no association between time to surgery and survival was observed. Median survival rates were comparable to those previously reported following pancreatic cancer surgery.[2] Similarly, we observed no differences in resection rates between the three waiting time groups.

Because of the aggressive biology of pancreatic tumors,[12] instant cancer surgery should be a priority for several reasons. Apart from the psychological factor and the stress patients may feel, the need to avoid progression and dissemination of the disease calls for an accelerated time to operation. However, our results did neither find a relation between the present time to surgery and the resectability nor the median survival. To some extent, our findings agree with some previous reports. Raptis *et al.* found that implementation of the National Cancer Waits Target of 62 days in the United Kingdom did neither improve operability, resectability, nor survival rates in 355 patients with pancreatic cancer.[5] Nor did McLean *et al.* observe a difference in resectability rates or survival according to waiting time in 119 patients who underwent operation for periampullary adenocarcinoma.[7] They did, however, show that the proportion of T4 tumors was higher in patients with waiting time more than 30 days. These findings agree with a study of 217 patients by

Marchegiani *et al.*, who also found that waiting time more than 30 days was associated with an increase in tumor size.[6] However, this did not translate into impaired survival in this study either. Contrary to these findings, Mirkin *et al.* in a cohort study of 14,807 patients with stage I-II pancreatic cancer found that a waiting time of 1-2 weeks was associated with poorer survival in a crude analysis, although the effect was modest (hazard ratio 1.12; 95% CI: 1.05-1.19).[13] However, they did also find that patients waiting 8-12 weeks were less likely to have negative surgical margins or undergo adjuvant therapy, both of which potentially can affect prognosis. A major drawback of the study by Mirkin *et al.* is that they followed patients from the date of diagnosis rather than the day of surgery, introducing a classical example of immortal time bias.[14] Furthermore, they included histology codes for intestinal cancers and cholangiocarcinomas, thus limiting comparison to other studies.

The present study has some important strengths. We defined waiting times in two way; by the National Cancer Pathway and by the last preoperative radiologic examination. Due to administrative causes, the National Cancer Pathway may remain inactivated in some patients (25% in this study). However, only 6% of the patients did not have registration of a preoperative radiologic examination. We observed similar resection and survival rates in both groups, limiting the risk of potential selection bias. Furthermore, the homogeneity in the National Cancer Pathways and the universal tax-financed healthcare system in Denmark also mitigates potential selection bias.

Some limitations should be noted. First, most importantly, some patients may have had their planned surgical procedure cancelled during the waiting time. Based on the partial data on multidisciplinary conference, this was the case for 11% of the patients. This could be caused by either tumor progression or or clinical deterioration, both precluding surgical treatment. Given that the multidisciplinary conference is often based solely on imaging without full information on the patients, some will be found subsequently to be non-operable. It is not possible to fully distinguish between non-operability and progression based on data from the registry. But the lack of further imaging in 50% of these patients indicates that they were more likely to be non-operable than

having tumor progression. As we did not have clinical information of these patients, this could incur a selection bias, as patients in the long waiting time group may have smaller tumors, leading to a potential better prognosis. However, there were only minuscule differences in preoperative T- and N-stage between the three groups. Thus, the potential selection bias caused by such a difference is of limited concern, but not eliminated as we had information on preoperative T- and N-stage in around one-third of the patients. Second, we had no information on other factors such as resection margins, lymph node status, tumor differentiation, and performance status, which affect prognosis and may be skewedly distributed between the waiting time groups.[15, 16] Third, we did not have information on the reasons for the waiting time (e.g. preoperative optimization, additional diagnostic workup, administrative reasons etc.).

Our study has substantial clinical implications. Despite patients' and physicians' perceptions of the opposite, resection rates and survival rates were unaffected by waiting time to surgery in patients undergoing pancreatic cancer surgery. We emphasize that healthcare policies by political decision-makers should be based on available evidence rather than subjective opinions. The substantial psychological distress of the waiting time to surgery for patients with a highly malignant disease and their relatives[17] should however not be disregarded as an important factor when planning surgery.

## **5. CONCLUSION**

In conclusion, our findings suggest that longer waiting times to surgery within 8 weeks from diagnosis do not affect the survival of patients undergoing surgery for pancreatic cancer.

## **6. ACKNOWLEDGEMENTS**

None.

ACCEPTED MANUSCRIPT

## 7. REFERENCES

1. Rahib L, Smith BD, Aizenberg R, Rosenzweig AB, Fleshman JM, Matrisian LM. Projecting cancer incidence and deaths to 2030: the unexpected burden of thyroid, liver, and pancreas cancers in the United States. *Cancer Res.* 2014;74(11):2913-21.
2. Gillen S, Schuster T, Meyer Zum Buschenfelde C, Friess H, Kleeff J. Preoperative/neoadjuvant therapy in pancreatic cancer: a systematic review and meta-analysis of response and resection percentages. *PLoS Med.* 2010;7(4):e1000267.
3. Kleeff J, Korc M, Apte M, La Vecchia C, Johnson CD, Biankin AV, Neale RE, Tempero M, Tuveson DA, Hruban RH, Neoptolemos JP. Pancreatic cancer. *Nat Rev Dis Primers.* 2016;2:16022.
4. National Cancer Pathway for pancreatic cancer [Pakkeforløb for kræft i bugspytkirtlen]. <https://www.sst.dk/da/sygdom-og-behandling/kraeft/pakkeforloeb/~media/95F54C47147146CB8F4D03EDAB2D45A6.ashx> (Accessed: 12 November, 2018).
5. Raptis DA, Fessas C, Belasyse-Smith P, Kurzawinski TR. Clinical presentation and waiting time targets do not affect prognosis in patients with pancreatic cancer. *Surgeon.* 2010;8(5):239-46.
6. Marchegiani G, Andrianello S, Perri G, Secchettin E, Maggino L, Malleo G, Bassi C, Salvia R. Does the surgical waiting list affect pathological and survival outcome in resectable pancreatic ductal adenocarcinoma? *HPB (Oxford).* 2018;20(5):411-417.
7. McLean SR, Karsanji D, Wilson J, Dixon E, Sutherland FR, Pasiaka J, Ball C, Bathe OF. The effect of wait times on oncological outcomes from periampullary adenocarcinomas. *J Surg Oncol.* 2013;107(8):853-8.
8. Frstrup C, Detlefsen S, Hansen CP, Ladekarl M. Danish Pancreatic Cancer Database. *Clin Epidemiol.* 2016;8:645-648.
9. Schmidt M, Pedersen L, Sorensen HT. The Danish Civil Registration System as a tool in epidemiology. *Eur J Epidemiol.* 2014;29(8):541-9.

10. Erichsen R, Lash TL, Hamilton-Dutoit SJ, Bjerregaard B, Vyberg M, Pedersen L. Existing data sources for clinical epidemiology: the Danish National Pathology Registry and Data Bank. *Clin Epidemiol.* 2010;2:51-6.
11. Schmidt M, Schmidt SA, Sandegaard JL, Ehrenstein V, Pedersen L, Sorensen HT. The Danish National Patient Registry: a review of content, data quality, and research potential. *Clin Epidemiol.* 2015;7:449-90.
12. Yu J, Blackford AL, Dal Molin M, Wolfgang CL, Goggins M. Time to progression of pancreatic ductal adenocarcinoma from low-to-high tumour stages. *Gut.* 2015;64(11):1783-9.
13. Mirkin KA, Hollenbeak CS, Wong J. Time to Surgery: a Misguided Quality Metric in Early Stage Pancreatic Cancer. *J Gastrointest Surg.* 2018;22(8):1365-1375.
14. Levesque LE, Hanley JA, Kezouh A, Suissa S. Problem of immortal time bias in cohort studies: example using statins for preventing progression of diabetes. *BMJ.* 2010;340:b5087.
15. Tas F, Sen F, Odabas H, Kilic L, Keskin S, Yildiz I. Performance status of patients is the major prognostic factor at all stages of pancreatic cancer. *Int J Clin Oncol.* 2013;18(5):839-46.
16. Lim JE, Chien MW, Earle CC. Prognostic factors following curative resection for pancreatic adenocarcinoma: a population-based, linked database analysis of 396 patients. *Ann Surg.* 2003;237(1):74-85.
17. Janda M, Neale RE, Klein K, O'Connell DL, Gooden H, Goldstein D, Merrett ND, Wyld DK, Rowlands IJ, Beesley VL. Anxiety, depression and quality of life in people with pancreatic cancer and their carers. *Pancreatology.* 2017;17(2):321-327.



**Table 1. Descriptive characteristics of 873 patients undergoing surgery for pancreatic cancer.**

	<b>N (%)</b>
<b>Age, years, mean (range)</b>	67 (35-86)
<b>Age group</b>	
<50	43 (5%)
50-69	472 (54%)
70+	358 (41%)
<b>Sex</b>	
Men	476 (55%)
Women	397 (45%)
<b>Charlson Comorbidity Index Score</b>	
Low (0)	362 (41%)
Moderate (1-2)	310 (36%)
Severe (>2)	201 (23%)
<b>Tumor histology</b>	
Adenocarcinoma	804 (92%)
Mucinous adenocarcinoma	13 (1%)
IPMN	7 (1%)
Adenosquamous carcinoma	17 (2%)
Acinar cell carcinoma	2 (0%)
Undifferentiated carcinoma	12 (1%)
Malignant tumor cells	14 (2%)
Other	4 (0%)
<b>Type of surgery</b>	
Resection	701 (80%)
Exploration/palliative surgery	172 (20%)

**Table 2. Characteristics of 701 patients resected for pancreatic cancer.**

	<b>N (%)</b>
<b>Procedure</b>	
Pancreaticoduodenectomy (Whipple)	484 (69%)
Distal pancreatectomy	89 (13%)
Total pancreatectomy	127 (18%)
<b>AJCC stage</b>	
Stage Ia	20 (3%)
Stage Ib	37 (5%)
Stage IIa	133 (19%)
Stage IIb	391 (56%)
Stage III	30 (4%)
Missing	90 (13%)

**Table 3. Preoperative T- and N-stage according to waiting time to surgery.**

	National Cancer Pathway <sup>a</sup>			Time since last CT/PET-CT <sup>b</sup>		
	(n=652)			(n=818)		
	<28 days	28-55 days	≥56 days	<28 days	28-55 days	≥56 days
Total	278 (43%)	297 (46%)	77 (12%)	321 (39%)	420 (51%)	77 (9%)
T-stage						
T1	17 (12%)	7 (8%)	2 (7%)	19 (11%)	10 (10%)	3 (16%)
T2	51 (37%)	36 (40%)	8 (30%)	64 (35%)	39 (38%)	9 (47%)
T3	57 (42%)	39 (43%)	15 (56%)	84 (46%)	45 (44%)	6 (32%)
T4	12 (9%)	8 (9%)	2 (7%)	14 (8%)	9 (9%)	1 (5%)
N-stage						
N0	78 (70%)	44 (59%)	14 (64%)	110 (72%)	48 (56%)	11 (65%)
N1	34 (30%)	30 (41%)	8 (36%)	43 (28%)	37 (44%)	6 (35%)

<sup>a</sup> T-stage: Missing data on 47 patients, 351 patients staged as Tx; N-stage: Missing data on 47 patients, 397 patients staged as Nx.

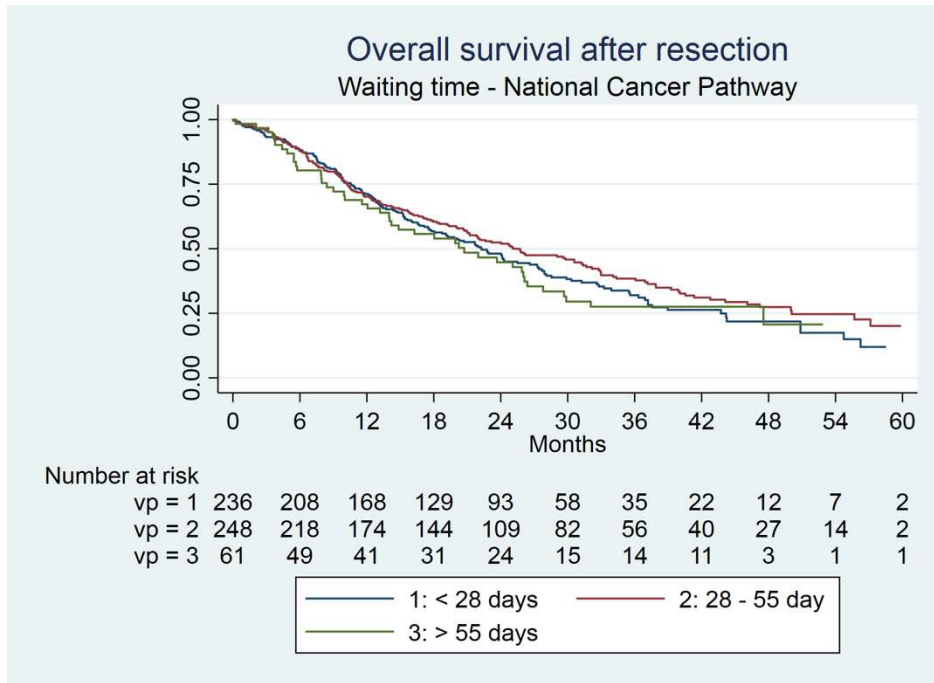
<sup>b</sup> T-stage: Missing data on 82 patients, 433 patients staged as Tx; N-stage: Missing data on 82 patients, 481 patients staged as Nx.

**Table 4. Resection and survival rates according to waiting time to surgery.**

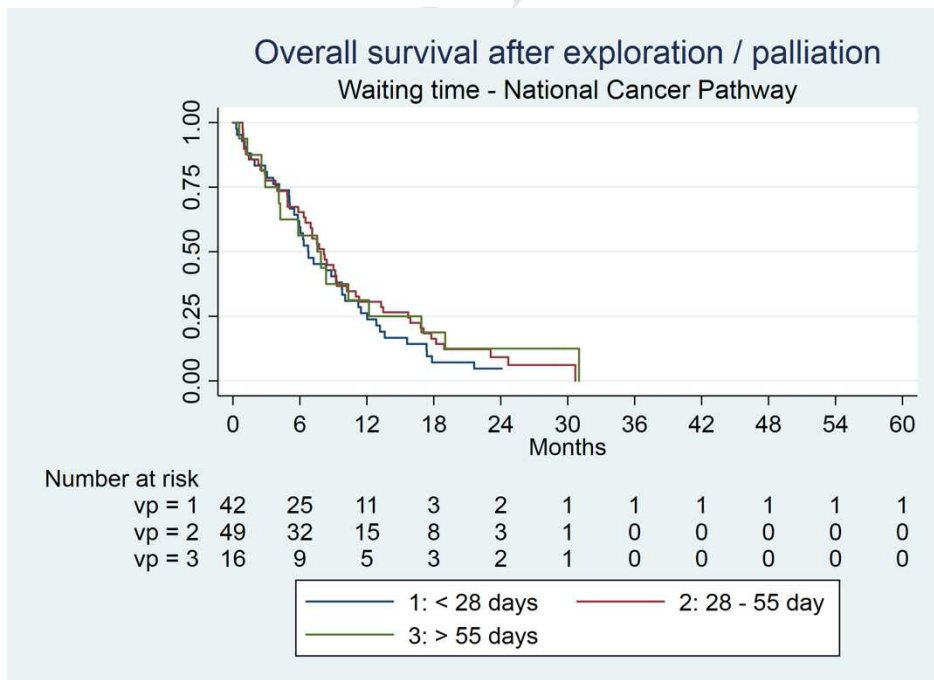
	National Cancer Pathway (n=652)			Time since last CT/PET-CT (n=818)		
	<28 days	28-55 days	≥56 days	<28 days	28-55 days	≥56 days
Total	278 (43%)	297 (46%)	77 (12%)	321 (39%)	420 (51%)	77 (9%)
Surgery						
Resection	236 (85%)	248 (84%)	61 (79%)	254 (79%)	334 (80%)	63 (82%)
Exploration/palliation	42 (15%)	49 (17%)	16 (21%)	67 (21%)	86 (20%)	14 (18%)
Median survival, months						
Resection	22.3 (18.1-27.3)	25.1 (21.0-31.3)	20.7 (14.0-26.1)	22.1 (19.3-25.9)	22.0 (17.4-26.2)	21.8 (16.3-26.1)
Exploration/palliation	6.7 (5.5-9.8)	8.1 (6.3-9.3)	7.6 (2.9-12.2)	6.0 (3.7-8.3)	8.0 (6.2-9.3)	6.3 (1.3-9.1)

**Figure 1. Kaplan-Meier survival curves for patients registered in the National Cancer Pathway. A: Survival after resection; B: Survival after exploration or palliative surgery.**

**A:**

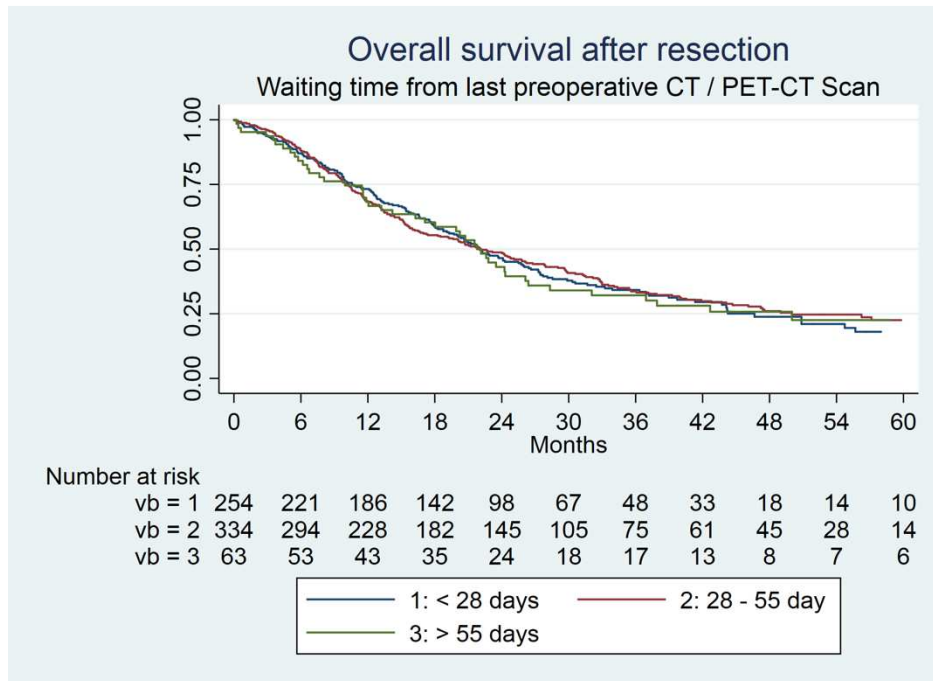


**B:**



**Figure 2. Kaplan-Meier survival curves for patients registered with a preoperative CT/PET-CT scan in the Danish National Patient Registry. A: Survival after resection; B: Survival after exploration or palliative surgery.**

**A:**



**B:**

