



AALBORG UNIVERSITY
DENMARK

Aalborg Universitet

Bolig 2020 med godt indeklima og høj brugerkomfort – Målerapport 1

Loukou, Evangelia; Heiselberg, Per Kvols; Jensen, Rasmus Lund

Creative Commons License
Unspecified

Publication date:
2018

Document Version
Publisher's PDF, also known as Version of record

[Link to publication from Aalborg University](#)

Citation for published version (APA):

Loukou, E., Heiselberg, P. K., & Jensen, R. L. (2018). *Bolig 2020 med godt indeklima og høj brugerkomfort – Målerapport 1*. Department of Civil Engineering, Aalborg University. DCE Technical Reports No. 251

General rights

Copyright and moral rights for the publications made accessible in the public portal are retained by the authors and/or other copyright owners and it is a condition of accessing publications that users recognise and abide by the legal requirements associated with these rights.

- ? Users may download and print one copy of any publication from the public portal for the purpose of private study or research.
- ? You may not further distribute the material or use it for any profit-making activity or commercial gain
- ? You may freely distribute the URL identifying the publication in the public portal ?

Take down policy

If you believe that this document breaches copyright please contact us at vbn@aub.aau.dk providing details, and we will remove access to the work immediately and investigate your claim.



DEPARTMENT OF CIVIL ENGINEERING
AALBORG UNIVERSITY

Bolig 2020 med godt indeklima og høj brugerkomfort – Målerapport 1

**Evangelia Loukou
Per Kvols Heiselberg
Rasmus Lund Jensen**

Aalborg University
Department of Civil Engineering
Architectural Engineering

DCE Technical Report No. 251

Bolig 2020 med godt indeklima og høj brugerkomfort – Målerapport 1

by

Evangelia Loukou
Per Kvols Heiselberg
Rasmus Lund Jensen

June 2018

© Aalborg University

Scientific Publications at the Department of Civil Engineering

Technical Reports are published for timely dissemination of research results and scientific work carried out at the Department of Civil Engineering (DCE) at Aalborg University. This medium allows publication of more detailed explanations and results than typically allowed in scientific journals.

Technical Memoranda are produced to enable the preliminary dissemination of scientific work by the personnel of the DCE where such release is deemed to be appropriate. Documents of this kind may be incomplete or temporary versions of papers—or part of continuing work. This should be kept in mind when references are given to publications of this kind.

Contract Reports are produced to report scientific work carried out under contract. Publications of this kind contain confidential matter and are reserved for the sponsors and the DCE. Therefore, Contract Reports are generally not available for public circulation.

Lecture Notes contain material produced by the lecturers at the DCE for educational purposes. This may be scientific notes, lecture books, example problems or manuals for laboratory work, or computer programs developed at the DCE.

Theses are monographs or collections of papers published to report the scientific work carried out at the DCE to obtain a degree as either PhD or Doctor of Technology. The thesis is publicly available after the defence of the degree.

Latest News is published to enable rapid communication of information about scientific work carried out at the DCE. This includes the status of research projects, developments in the laboratories, information about collaborative work and recent research results.

Published 2018 by
Aalborg University
Department of Civil Engineering
Sofiendalsvej 9-11
DK-9200 Aalborg SV, Denmark

Printed in Aalborg at Aalborg University

ISSN 1901-726X
DCE Technical Report No. 251

1. Introduction

The purpose of this report is to register the operation and performance of the project building Bolig 2020 for the first 3 months (December to February) that has been occupied. The building is located in Kildebjerg Søvej 32, Ry.

The aim is the long-term assessment of the indoor environmental quality and energy use of the dwelling. Additionally, the data is examined in order to verify that the systems' and equipment's performance matches their intended operation. The activation of natural ventilation and external shading devices will not be addressed in this first report, due to the lack of registered data.

The evaluation of the performance of Bolig 2020 case study is based on a combination of standards and measured data.

The data registration is taking place every 5 minutes, approximately, in all rooms of the dwelling. The registered parameters are the following:

| <u>Parameters</u> | <u>Comments</u> |
|--|---|
| Cold water consumption [m ³] | Total amount of water consumption for cold and hot water |
| Hot water consumption [m ³] | |
| Energy consumption: | |
| District heating [MWh] | |
| Floor heating pump [kWh] | |
| Nilan system [kWh] | Energy consumption for ventilation and production of sanitary hot water |
| Control system [kWh] | |
| Kitchen stove [kWh] | Energy consumption for the operation of 2 ovens and the cooking plate |
| Refrigerator [kWh] | Energy consumption for the refrigerator, wine cooler and exhaust hood |
| Quooker [kWh] | |
| Dish washer [kWh] | |
| Dryer [kWh] | |
| Washing machine [kWh] | |
| Other consumption [kWh] | Includes everything else |

| |
|---|
| Temperature [°C], CO ₂ level [ppm], Relative humidity level [%] and Damper opening [min/ max]: |
| Room 1 |
| Room 2 |
| Room 3 |
| Master Bedroom |
| Living Room |
| Kitchen/ Dining Room |

| |
|--|
| Temperature [°C], Relative humidity level [%] and Damper opening [min/ max]: |
|--|

| |
|--------------|
| Utility Room |
| Bathroom 1 |
| Bathroom 2 |

| |
|---|
| Temperature [°C] and Damper opening [min/ max]: |
| Wardrobe closet |

| |
|---|
| For the compact unit: |
| Outdoor air temperature [°C] |
| Return air temperature [°C] and relative humidity [%] |
| Hot water temperature [°C] |
| Supply air temperature [°C] |
| Heat pump temperature [°C] |
| Ventilation speed [steps] |

This report includes the registered period between the beginnings of December to the end of February. The data is presented both on a monthly level and for the entire period of the 3 months. The indoor environment evaluation is realized on a room basis, while the examined rooms are the most used ones, master bedroom, living room, kitchen and bathroom.

Each chapter addresses one of the examined parameters, including graphs for each examined month, as well as for the entire period (December, January, and February). In the Annex are included more relevant graphs which are not in the report.

2. Energy Consumption

2.1 Energy consumption for ventilation and DHW

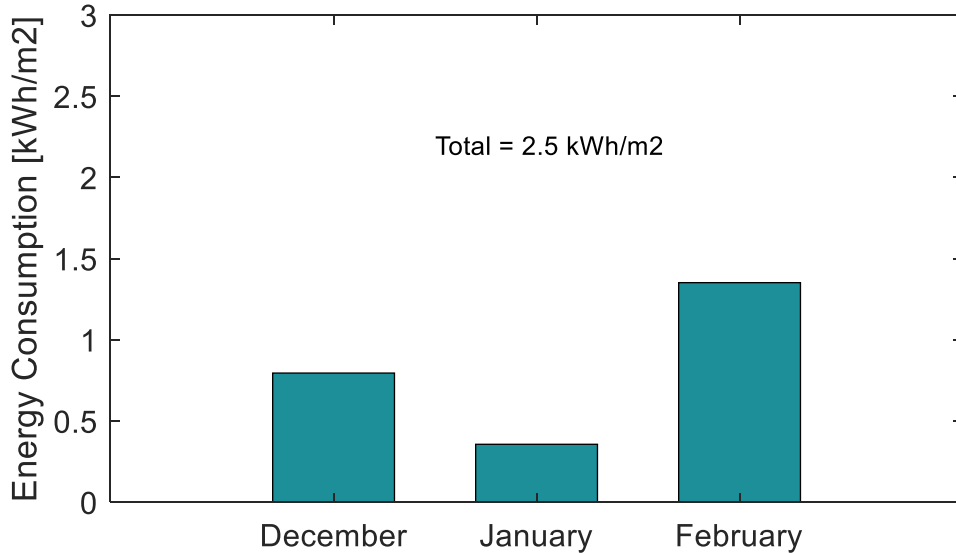


Figure 1: Energy consumption for ventilation and domestic hot water [kWh/m²]

The sanitary hot water is produced by the compact ventilation system through the recovered energy from the exhaust air. If the demand is particularly large, an electrical backup supplements the production of hot water.

2.2 Energy consumption for heating

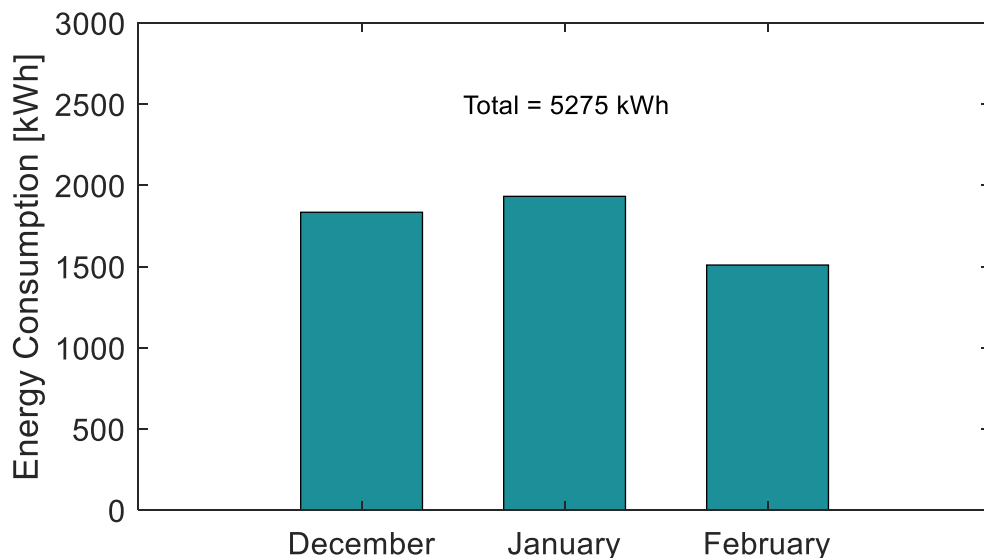


Figure 2: Energy consumption for heating [kWh]

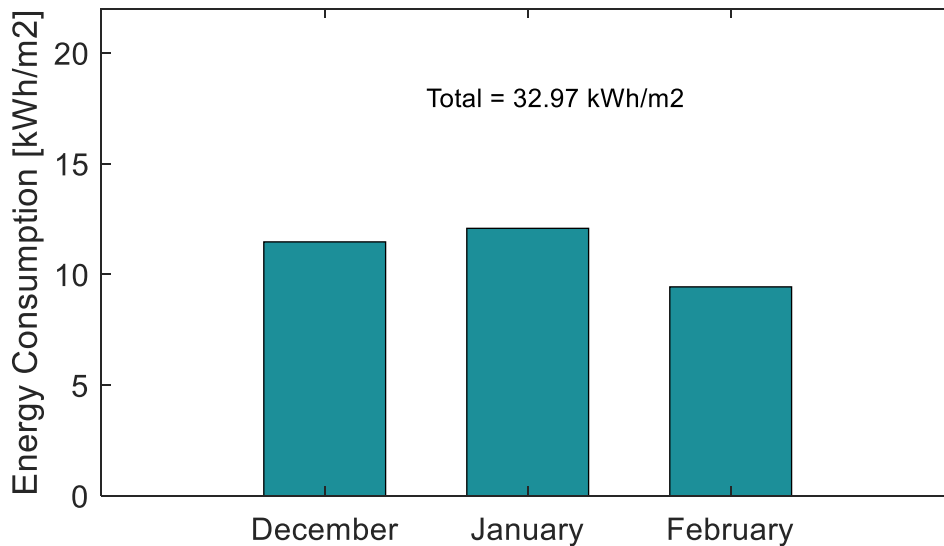


Figure 3: Energy consumption for heating [kWh/m²]

Figures 2 and 3 illustrate the energy consumption for heating, given in [kWh] and [kWh/m²], respectively. The values are taken from the data registered for “District Heating”.

2.3 Electricity consumption

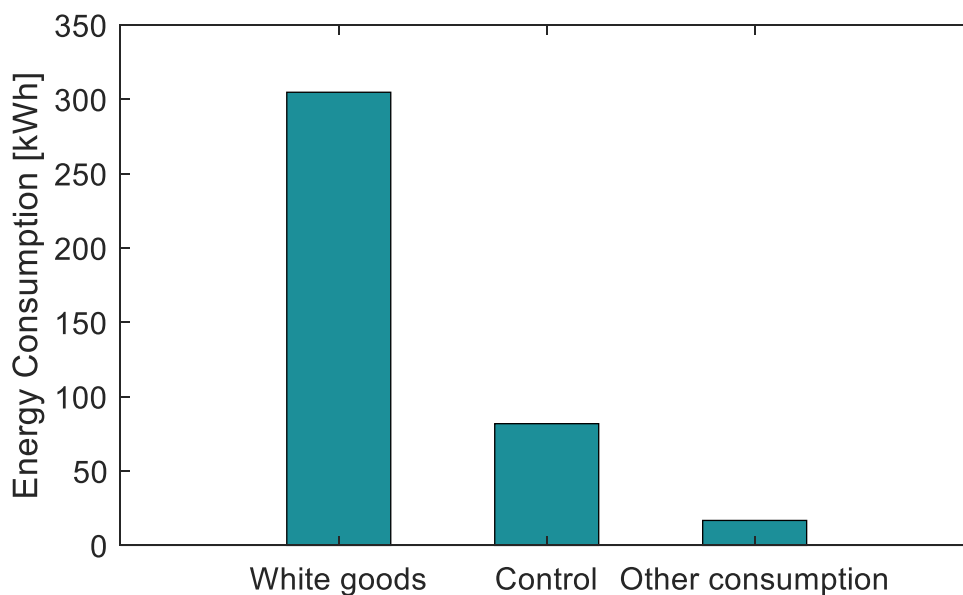


Figure 4: Consumption of electricity [kWh]

The energy consumption of white goods includes the kitchen stove, the refrigerator, the Quooker (for production of boiling water), the dishwasher, the dryer and the washing machine. The second column refers to the control of all systems, sensors etc., while the third column includes all the rest.

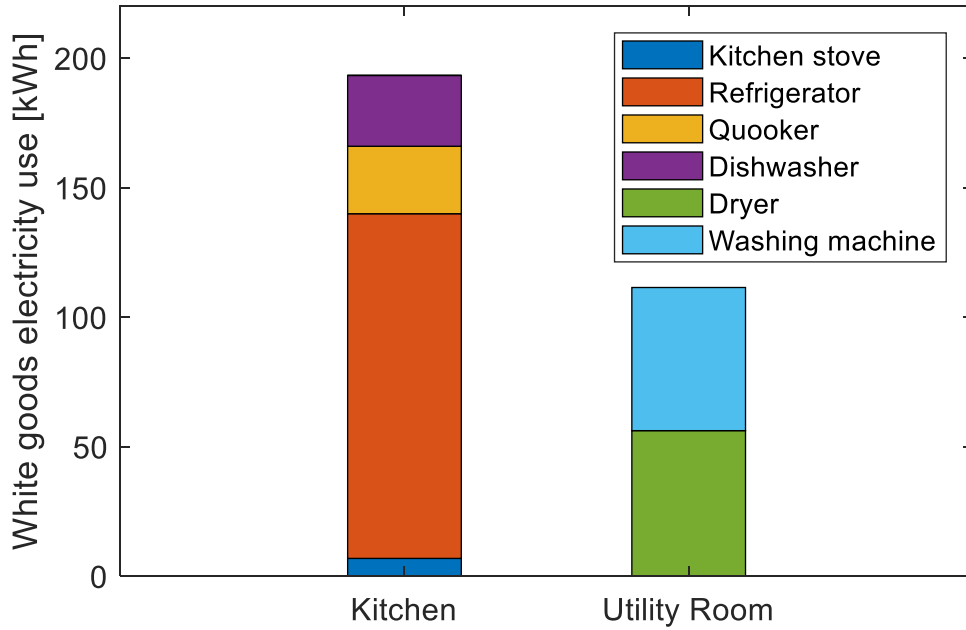


Figure 5: Consumption of electricity of white goods, on room level [kWh]

Figure 5 gives the energy consumption for all registered appliances divided in room level.

2.4 Water consumption

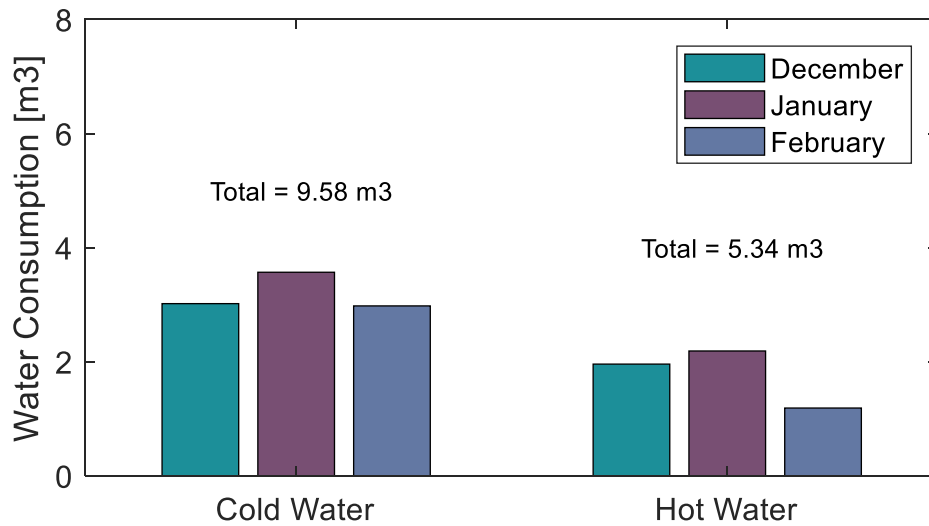


Figure 6: Consumption of cold and hot water [m³]

The consumption of cold water has been calculated by subtracting the amount of hot water from the total amount of water consumption.

3. Indoor Environment

For the indoor environmental quality is evaluated the thermal and atmospheric indoor climate. More specifically, the examined parameters are the room temperature [°C], CO₂ level [ppm] and relative humidity level [%]. The rooms are examined on a daily level (24 hours), as well as for their expected occupied period. The time from 7:00 to 17:00 is counted as unoccupied, taking into consideration that the occupants are away from home during this period. The following table sums up the corresponding periods for each type of room.

| | Scenario 1 | Scenario 2 |
|----------------|------------|---------------|
| Living Room | 24 h | Day: 17 - 23 |
| Kitchen | 24 h | Day: 17 - 23 |
| Master bedroom | 24 h | Night: 23 - 7 |

3.1 Thermal indoor environment

The thermal criteria are assessed according to the comfort categories given by the standards DS/EN 15251. The following table shows the temperature ranges for the three categories, assuming an activity level of 1.2 met (sedentary activity).

| Activity level [met] | | 1.2 | | |
|----------------------------|--------|------------|------------|------------|
| Category | | I | II | III |
| Operative temperature [°C] | Summer | 24.5 ± 1.0 | 24.5 ± 1.5 | 24.5 ± 2.5 |
| | Winter | 22.0 ± 1.0 | 22.0 ± 2.0 | 22.0 ± 3.0 |

The recommended criteria for acceptable deviations for the thermal environment, for Category II, are presented in the following table.

| | Criteria | Max. deviation | |
|--------------------|----------|----------------|---------|
| | | Monthly | Yearly |
| General Assessment | Class II | 3 & 5 % | 3 & 5 % |
| Overheating | 25 °C | 10 % | 10 % |
| | 27 °C | - | 100 h |
| | 28 °C | - | 25 h |
| Under heating | 20 °C | - | 100 h |
| | 19 °C | - | 25 h |

The distribution of hours in each of the three categories is given in percentages, in form of bar charts, specifying whether the room temperature lies on the low or high part of the scale.

| IV- | III- | II- | I | II+ | III+ | IV+ |
|--------|-------------|-------------|-------------|-------------|-------------|--------|
| t < 19 | 19 ≤ t < 20 | 20 ≤ t < 21 | 21 ≤ t ≤ 23 | 23 < t ≤ 24 | 24 < t ≤ 25 | 25 < t |

3.1.1 December

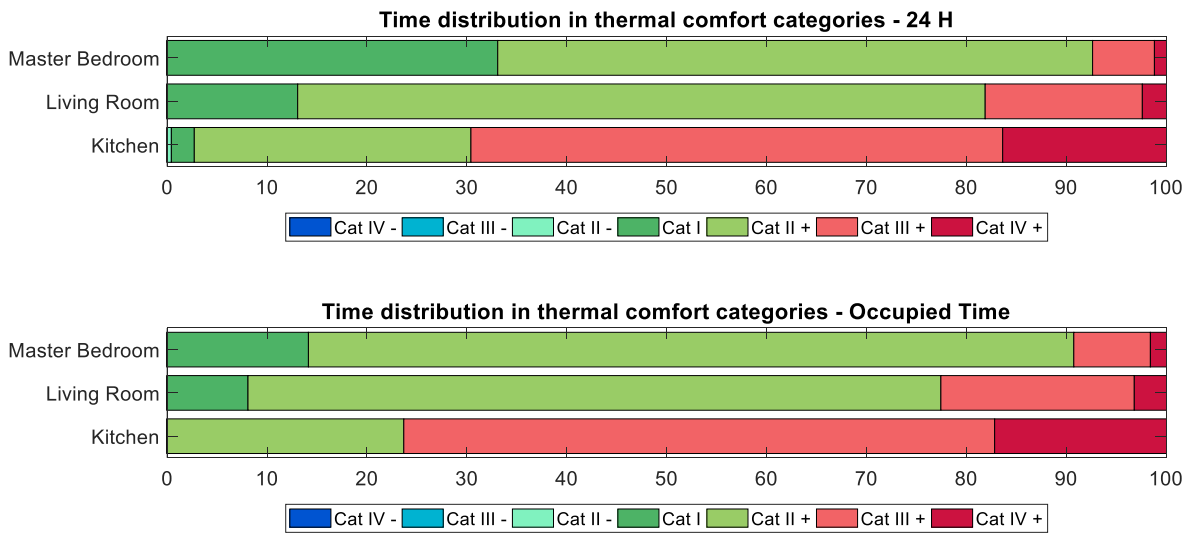


Figure 7: Percentage of time in each Category for temperature during December

3.1.2 January

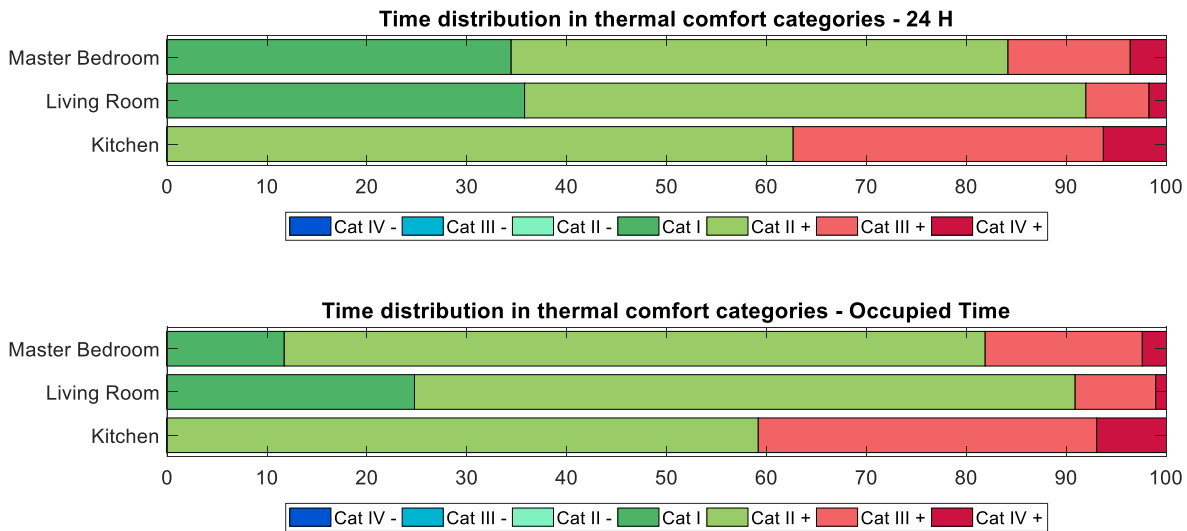


Figure 8: Percentage of time in each Category for temperature during January

3.1.3 February

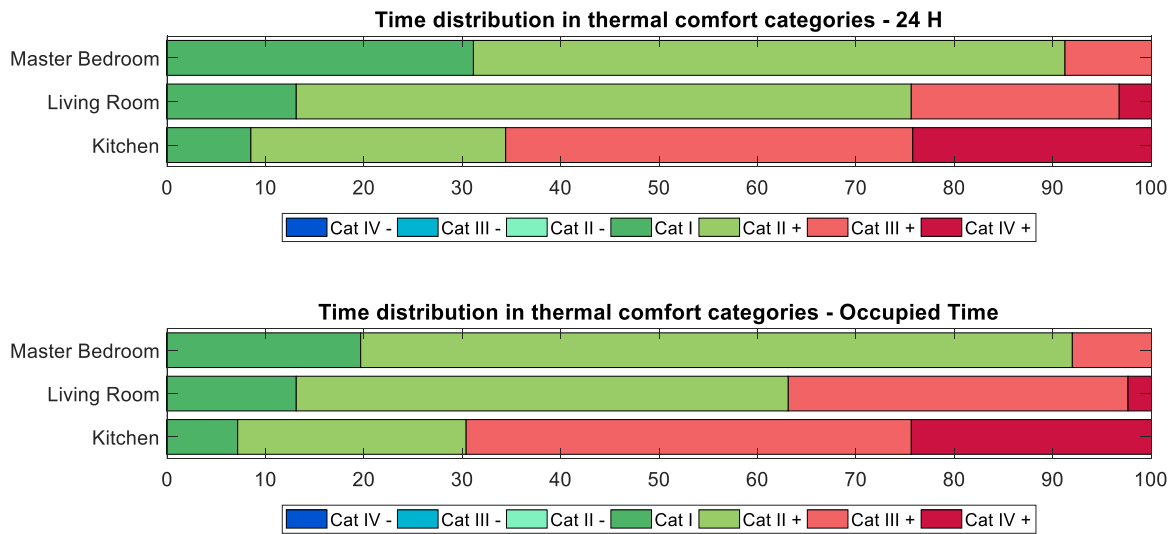


Figure 9: Percentage of time in each Category for temperature during February

3.1.4 Entire period (December, January, February)

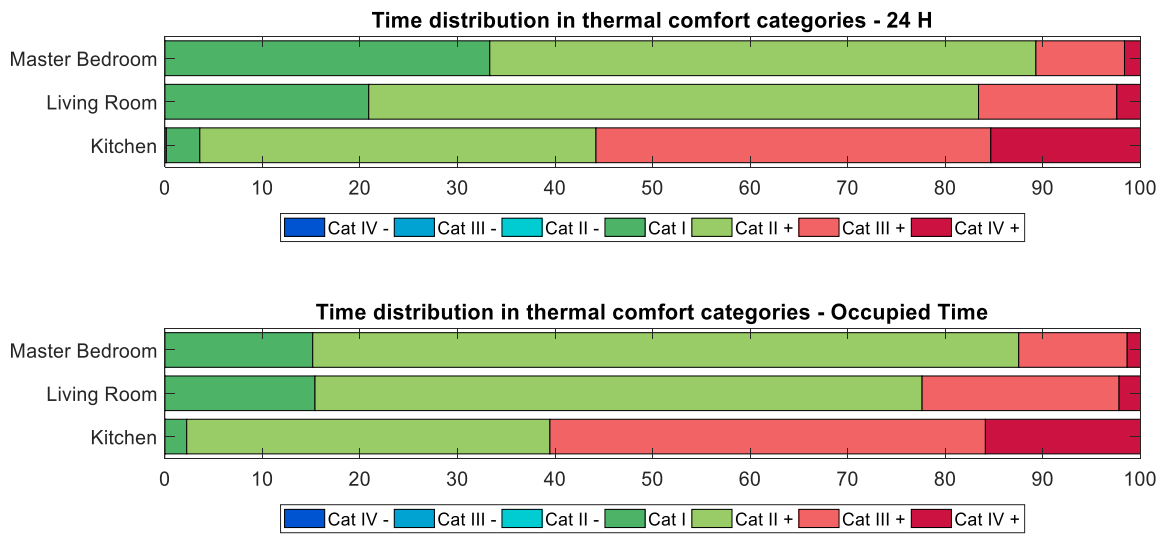


Figure 10: Percentage of time in each Category for temperature during 3 months period time

3.2 Atmospheric indoor environment

The indoor air quality is also assessed based on the comfort categories suggested by the standards DS/EN 15251. On the following tables are given the acceptable ranges for CO₂ level and relative humidity, respectively.

| Category | Corresponding CO ₂ above outdoors level [ppm] |
|----------|--|
| I | 350 |
| II | 500 |
| III | 800 |
| IV | > 800 |

| Category | Design relative humidity for dehumidification [%] | Design relative humidity for humidification [%] |
|----------|---|---|
| I | 50 | 30 |
| II | 60 | 25 |
| III | 70 | 20 |
| IV | >70 | <20 |

The outdoor CO₂ level is taken as a standard value of 400 ppm and not as the minimum registered value by the sensors in each room. This was decided based on the observation that occasionally some of the sensors would register some unrealistically small values. Actions have been taken in order to verify the proper operation of the sensors and eventually to calibrate or replace them. Therefore, it should be kept in mind that there is some uncertainty concerning the presented results for the CO₂ level.

Next table shows the recommended criteria for acceptable deviations for the atmospheric environment, for Category II.

| | | Max. deviation |
|-------------------|-------------|----------------|
| | Criteria | Monthly |
| CO ₂ | Category II | 3 & 5 % |
| | Category II | 8 h in a row |
| Relative Humidity | Category II | 3 & 5 % |
| | Category II | 24 h in a row |
| | RH < 45% | - |
| | RH > 75% | 1% |

3.2.1 December

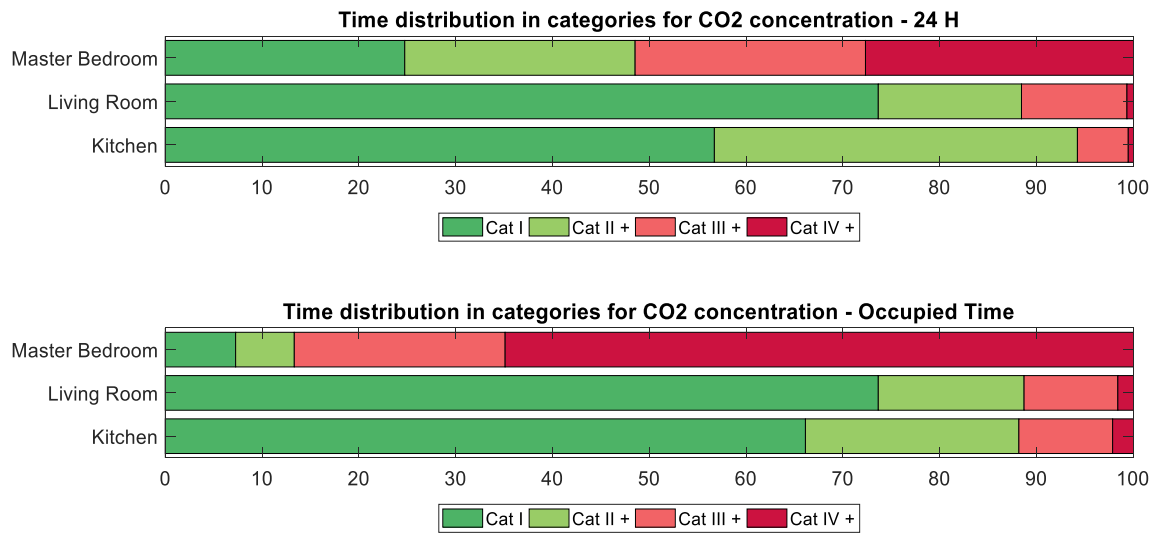


Figure 11: Percentage of time in each Category for CO₂ level during December

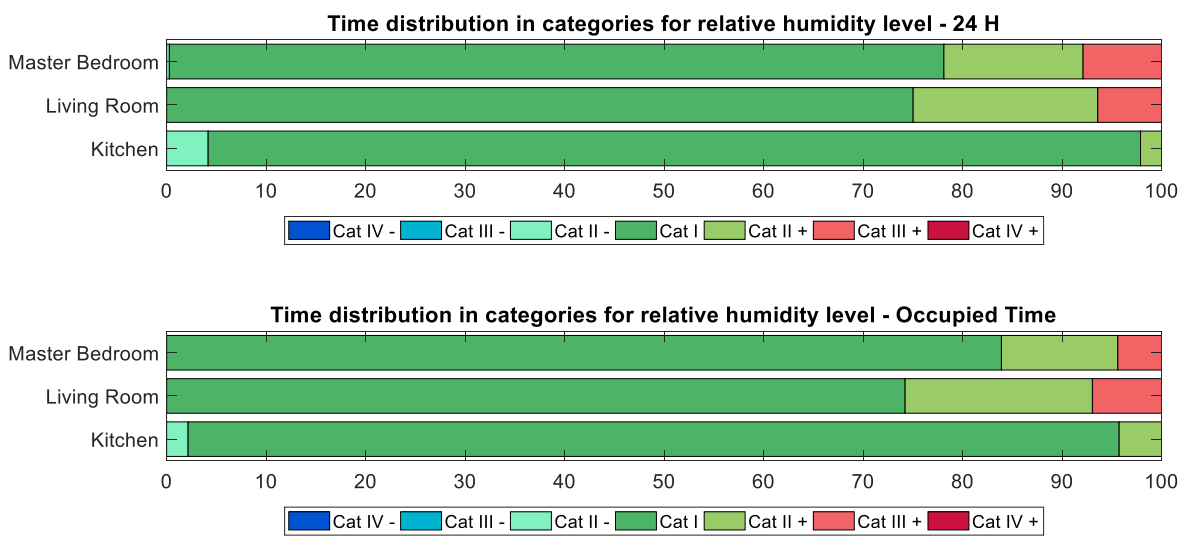


Figure 12: Percentage of time in each Category for relative humidity during December

3.2.2 January

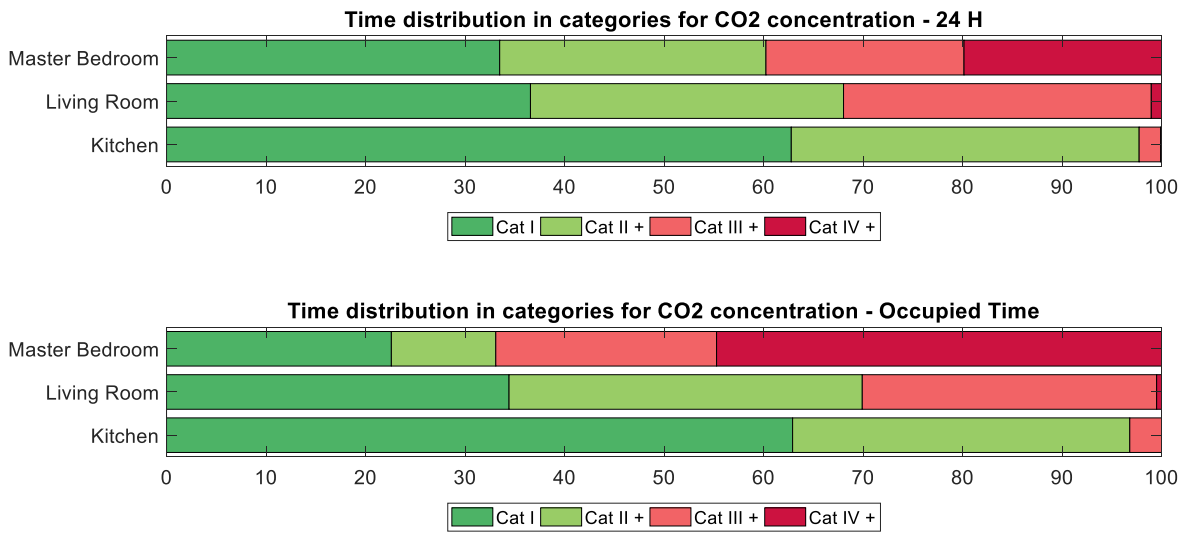


Figure 13: Percentage of time in each Category for CO₂ level during January

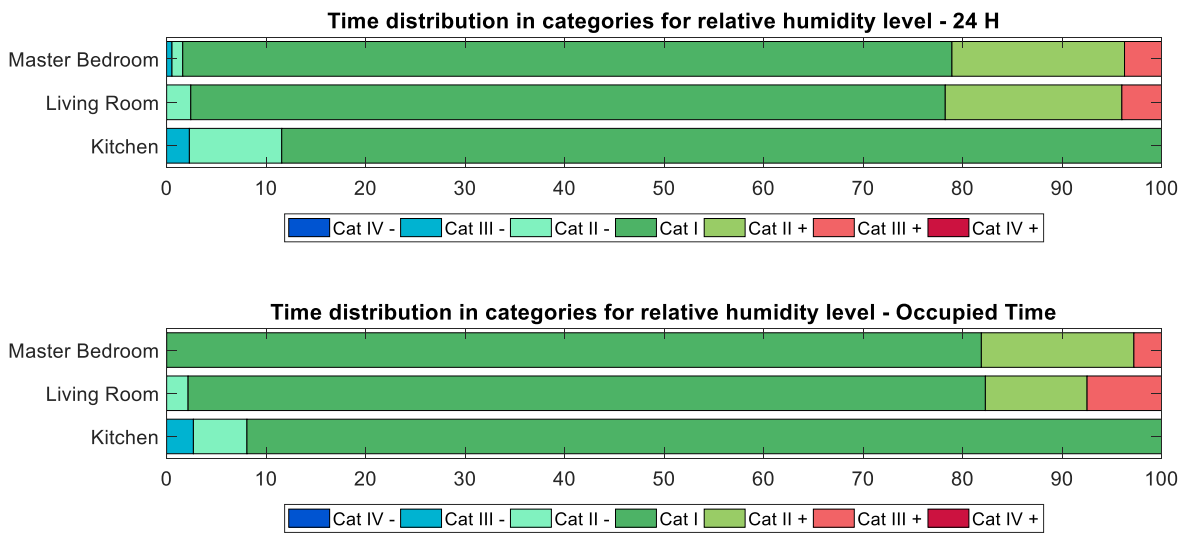


Figure 14: Percentage of time in each Category for relative humidity during January

3.2.3 February

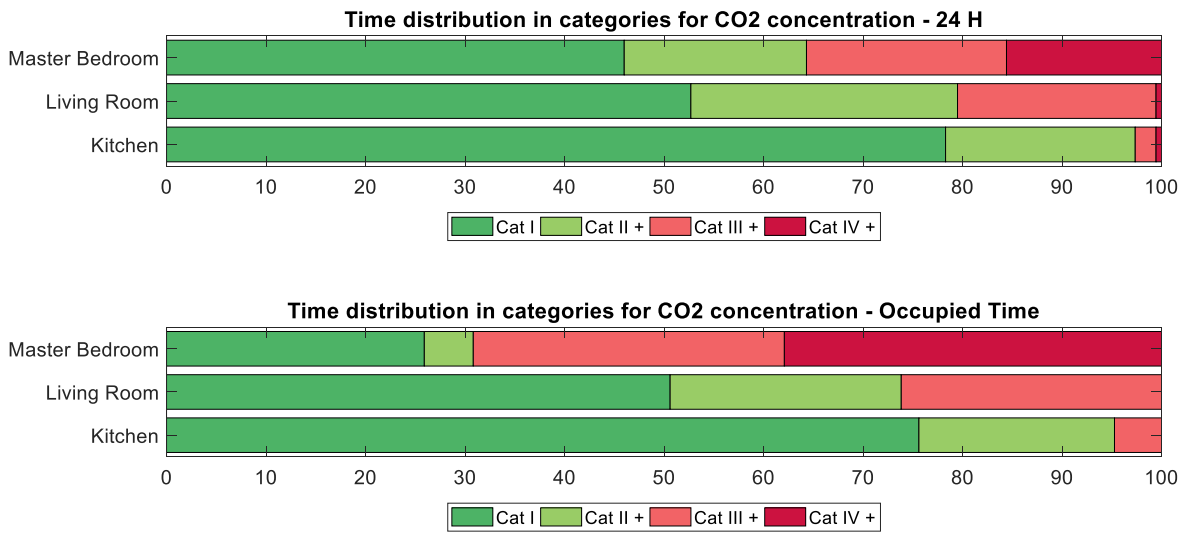


Figure 15: Percentage of time in each Category for CO₂ level during February

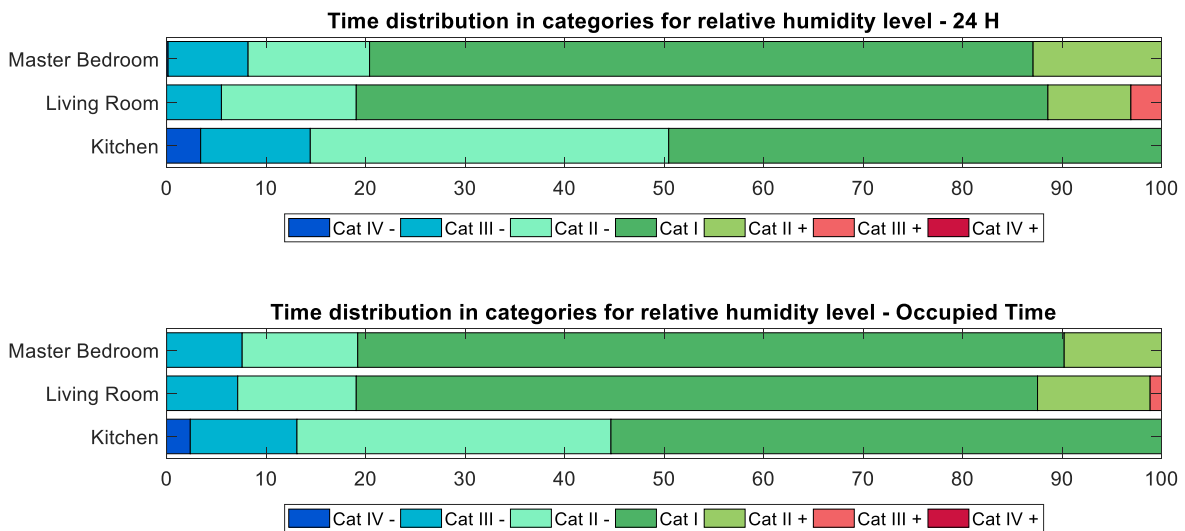


Figure 16: Percentage of time in each Category for relative humidity during February

3.2.4 Entire period (December, January, February)

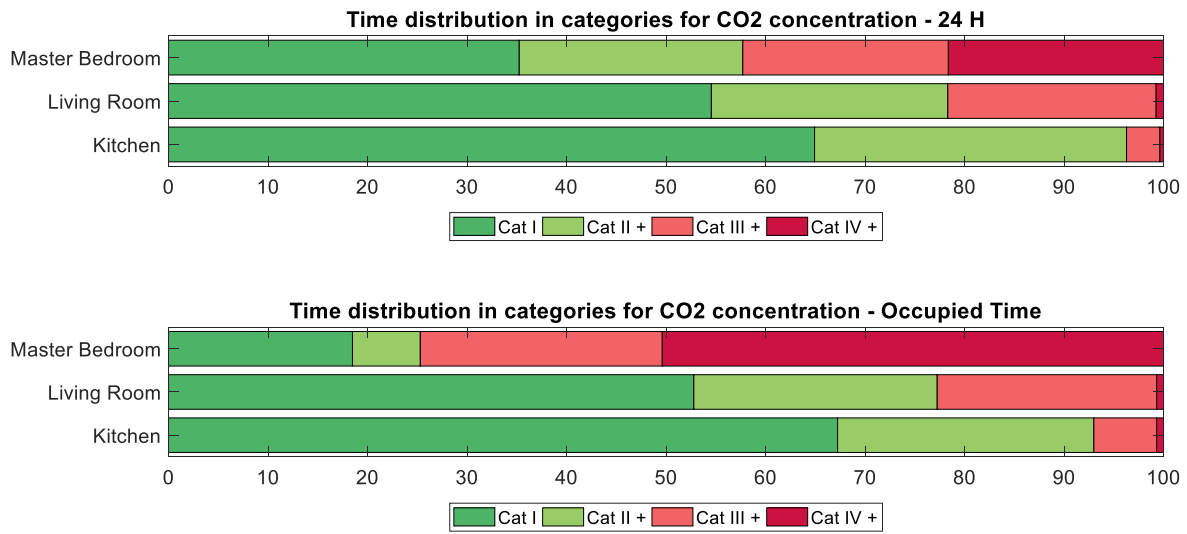


Figure 17: Percentage of time in each Category for CO₂ level during 3 months period time

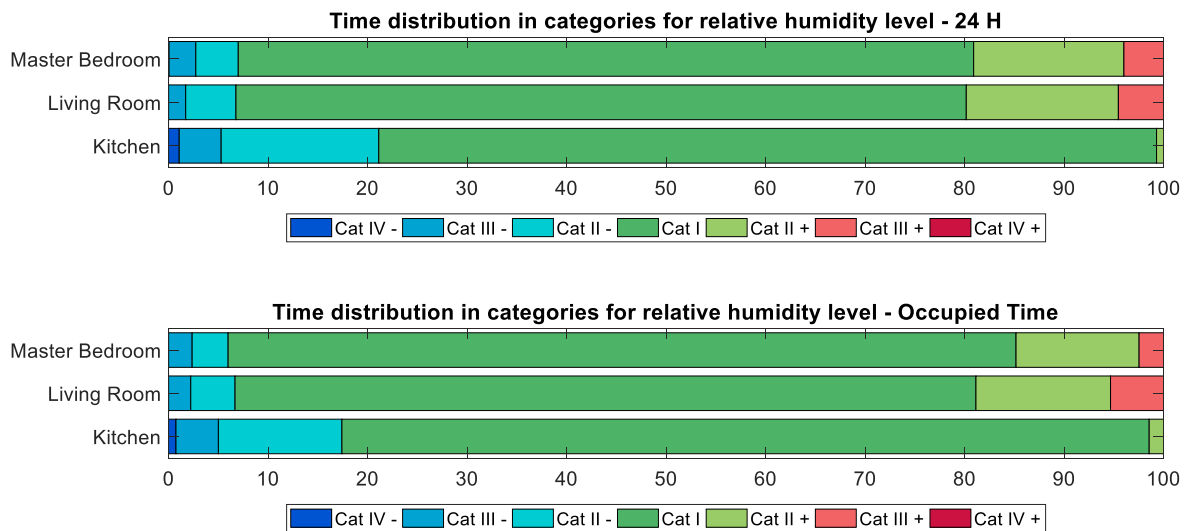


Figure 18: Percentage of time in each Category for relative humidity during 3 months period time

4. Annex

4.1 December

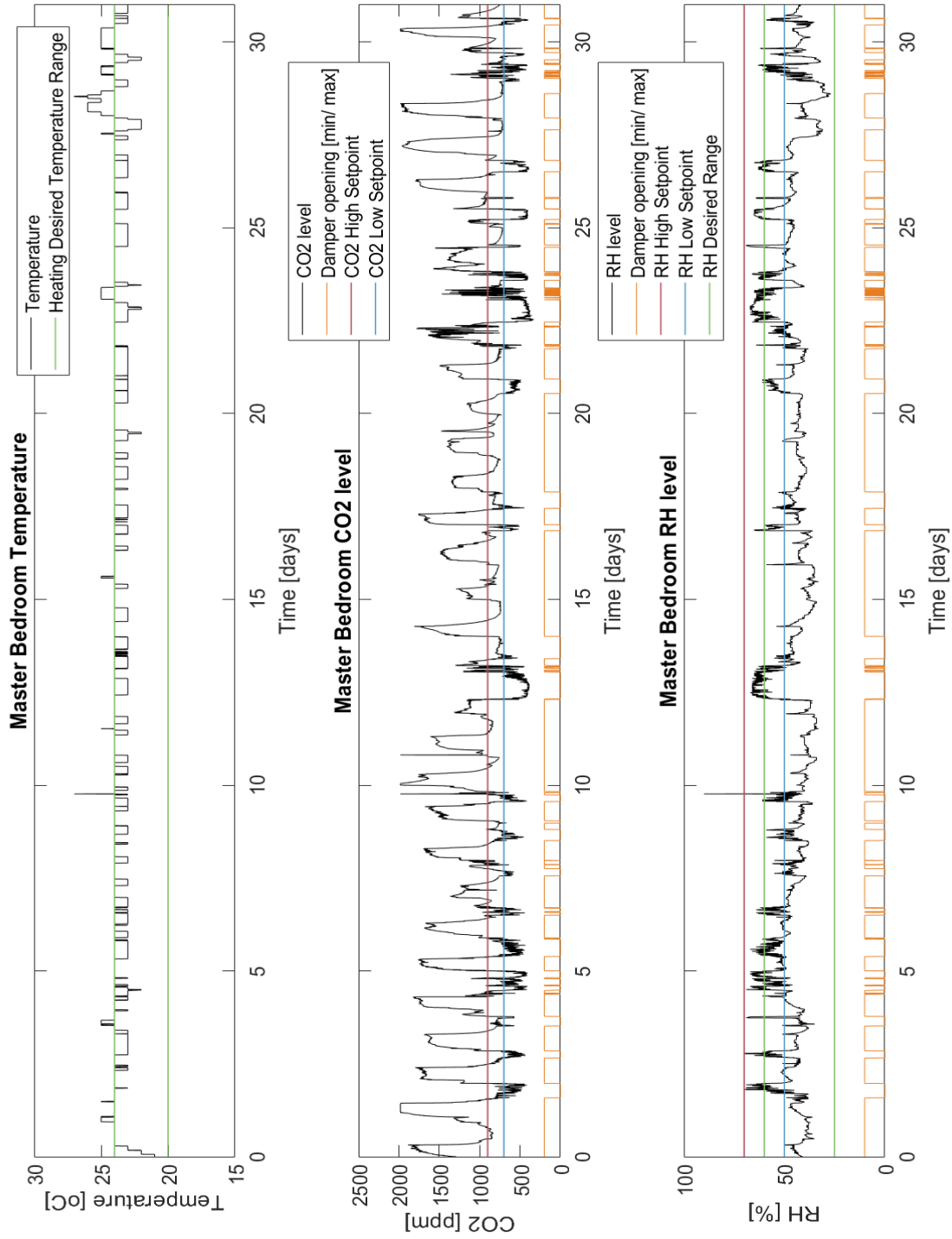


Figure 19: Graphs for temperature, CO₂ level and relative humidity during the month of December – Master Bedroom

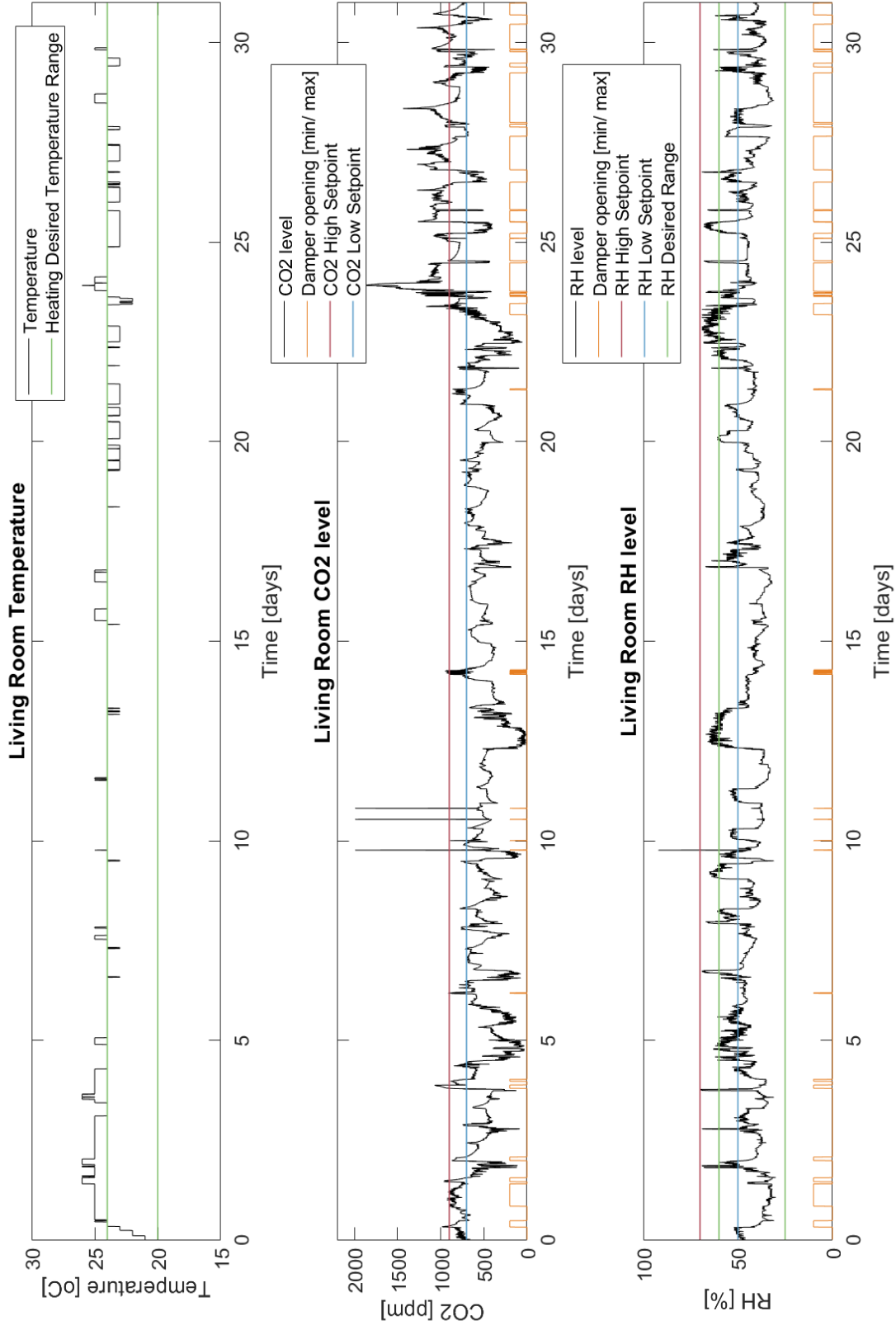


Figure 20: Graphs for temperature, CO₂ level and relative humidity during the month of December – Living Room

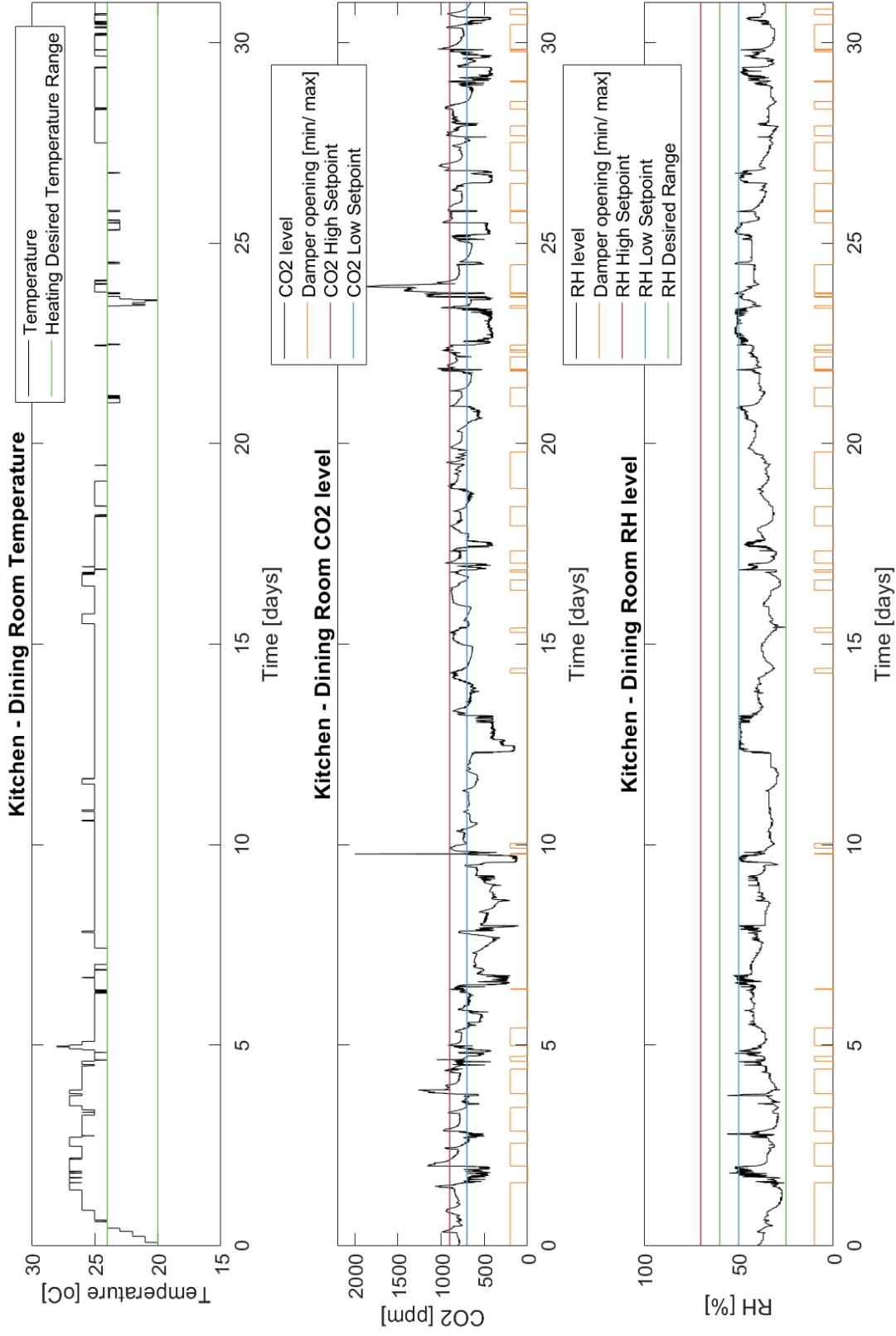


Figure 21: Graphs for temperature, CO₂ level and relative humidity during the month of December – Kitchen/ Dining Room

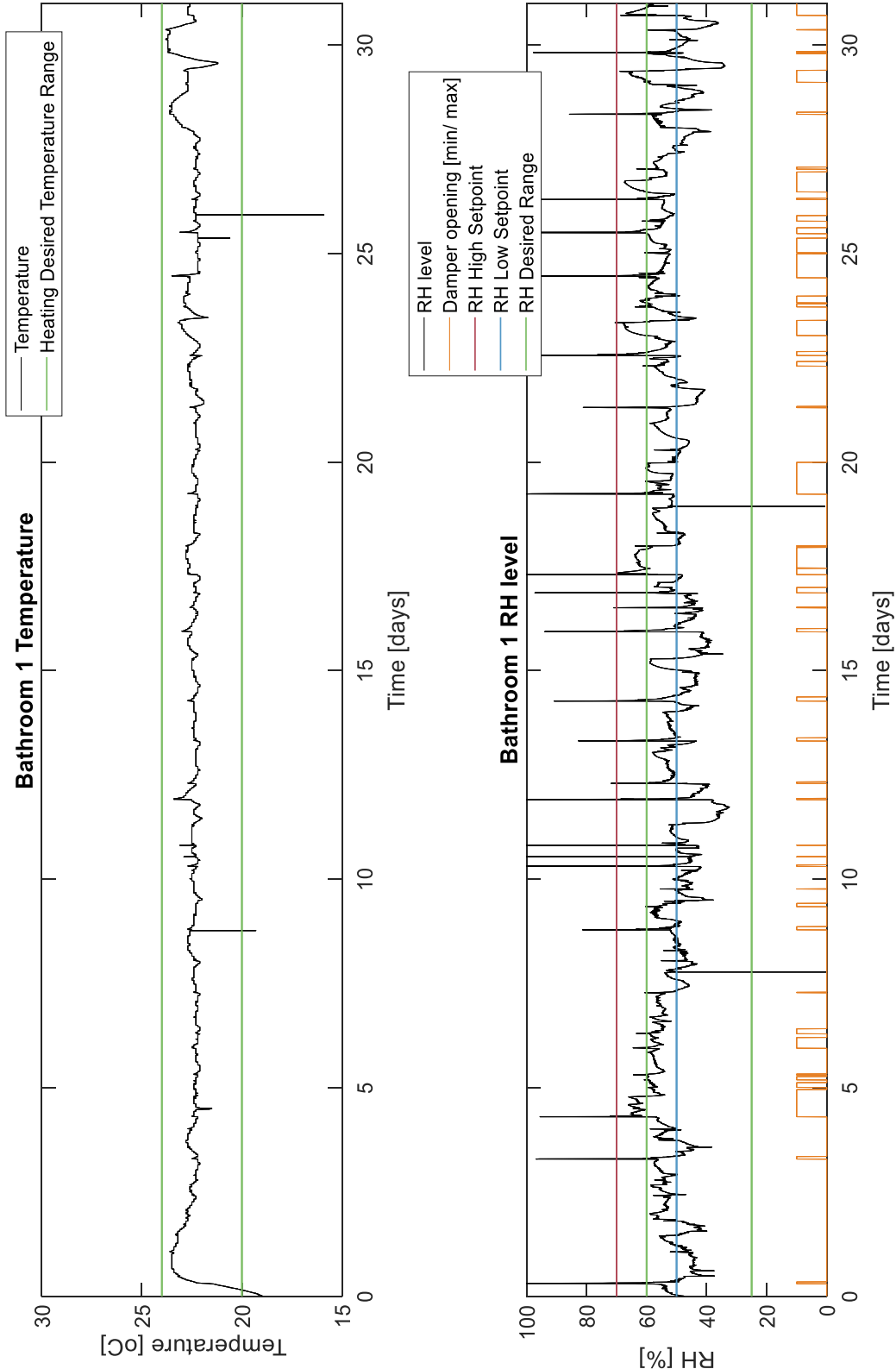


Figure 22: Graphs for temperature, CO₂ level and relative humidity during the month of December – Bathroom 1

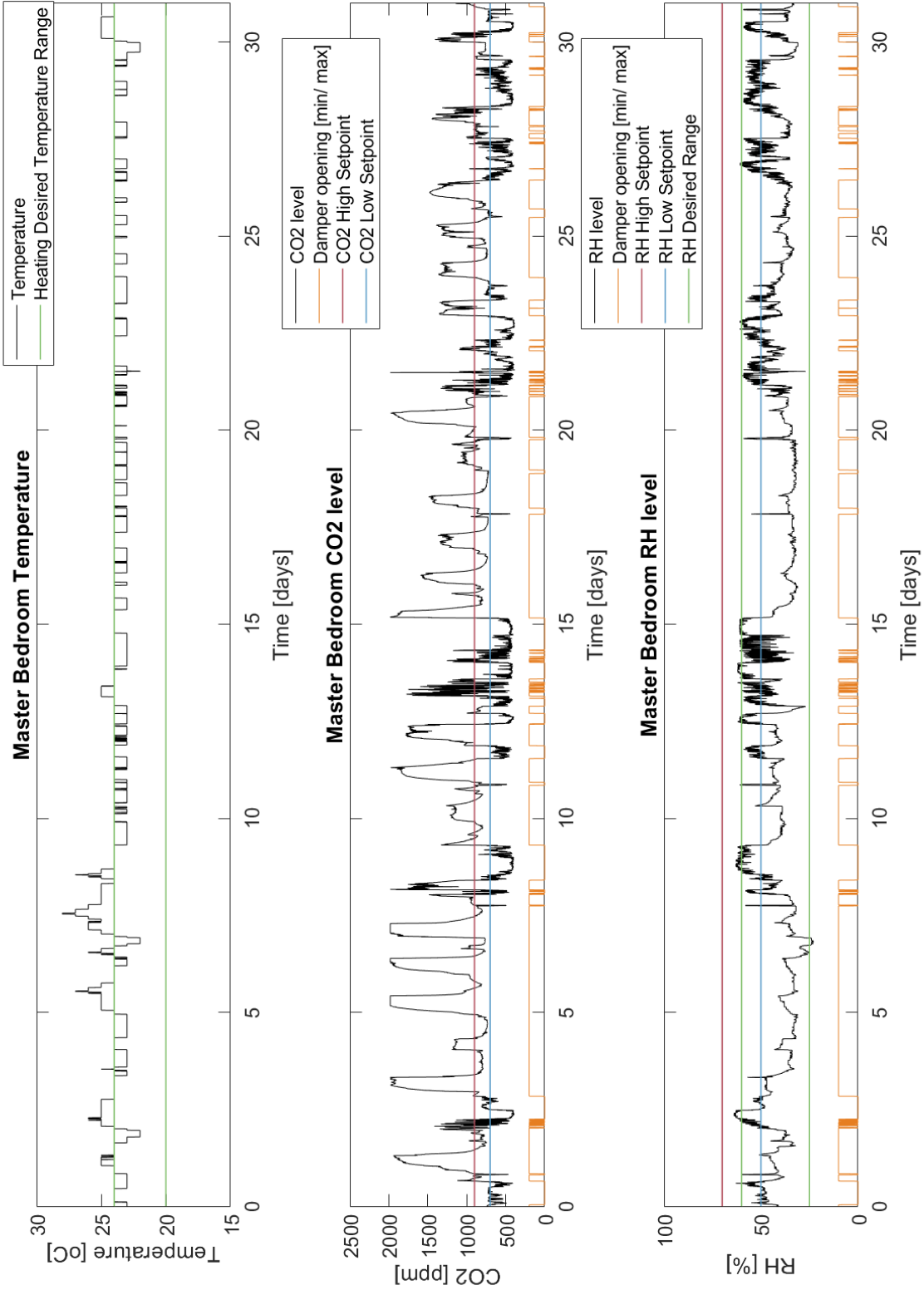


Figure 23: Graphs for temperature, CO₂ level and relative humidity during the month of January – Master Bedroom

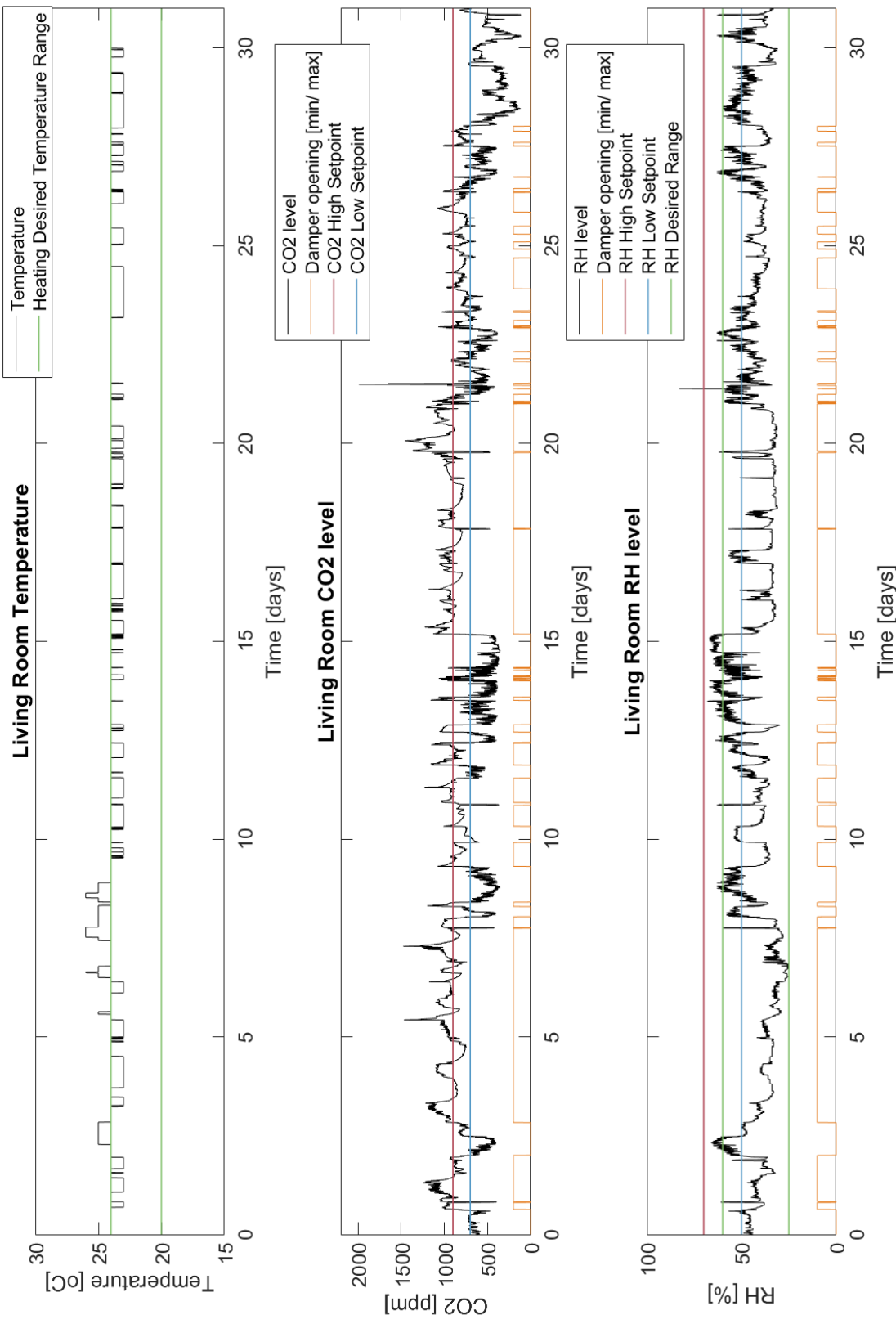


Figure 24: Graphs for temperature, CO₂ level and relative humidity during the month of January – Living Room

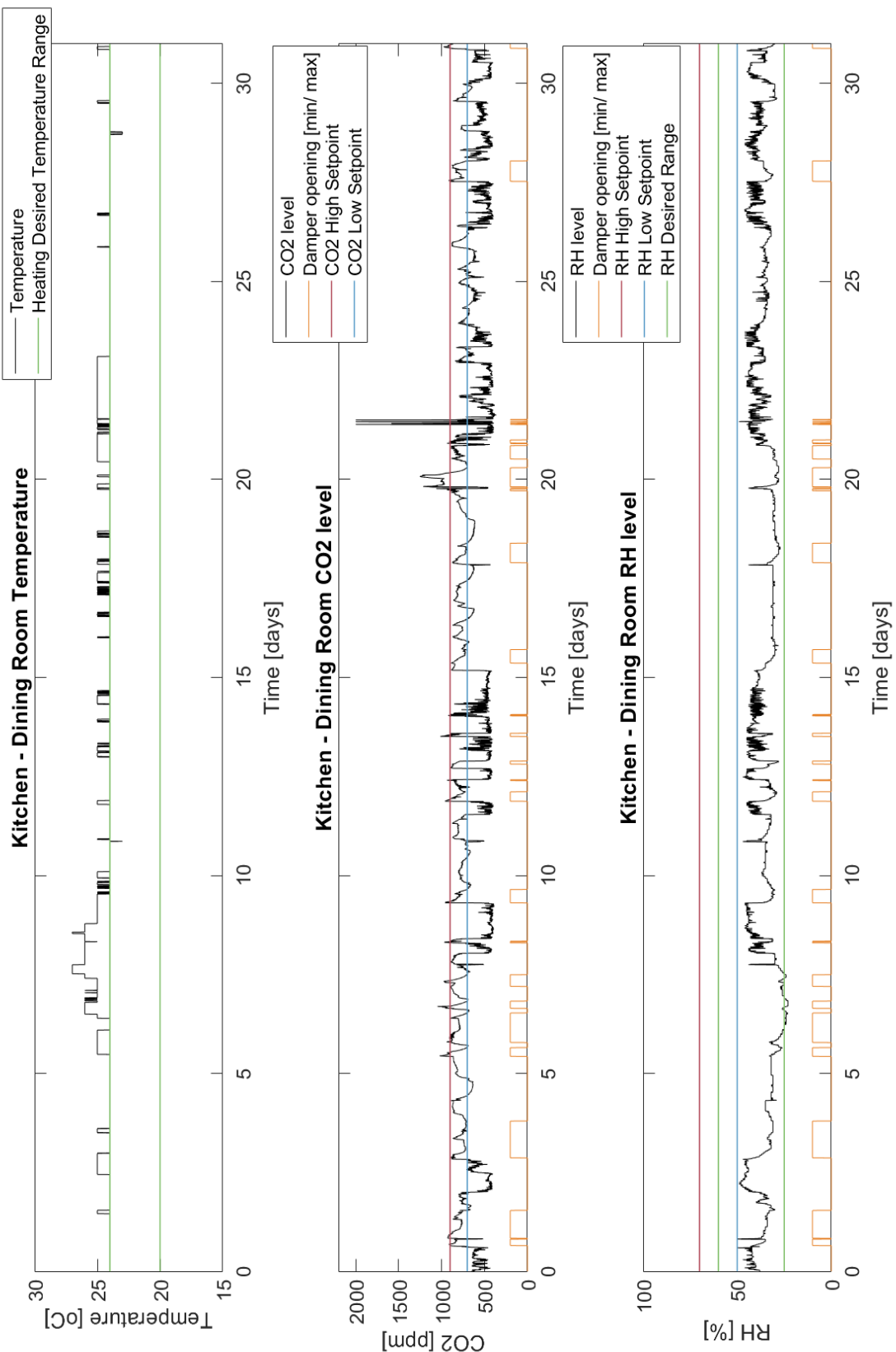


Figure 25: Graphs for temperature, CO₂ level and relative humidity during the month of January – Kitchen/ Dining Room

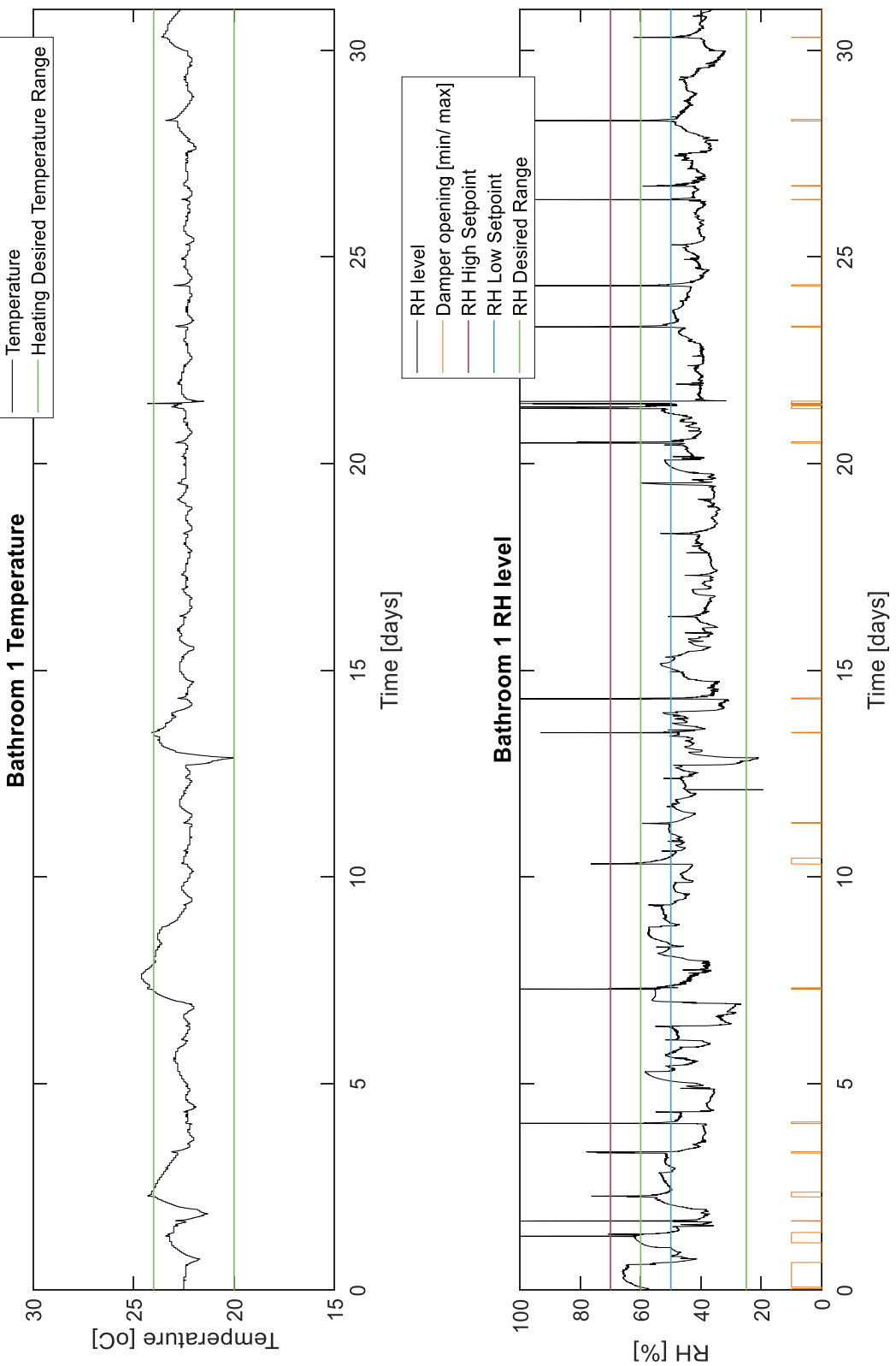


Figure 26: Graphs for temperature, CO₂ level and relative humidity during the month of January – Bathroom 1

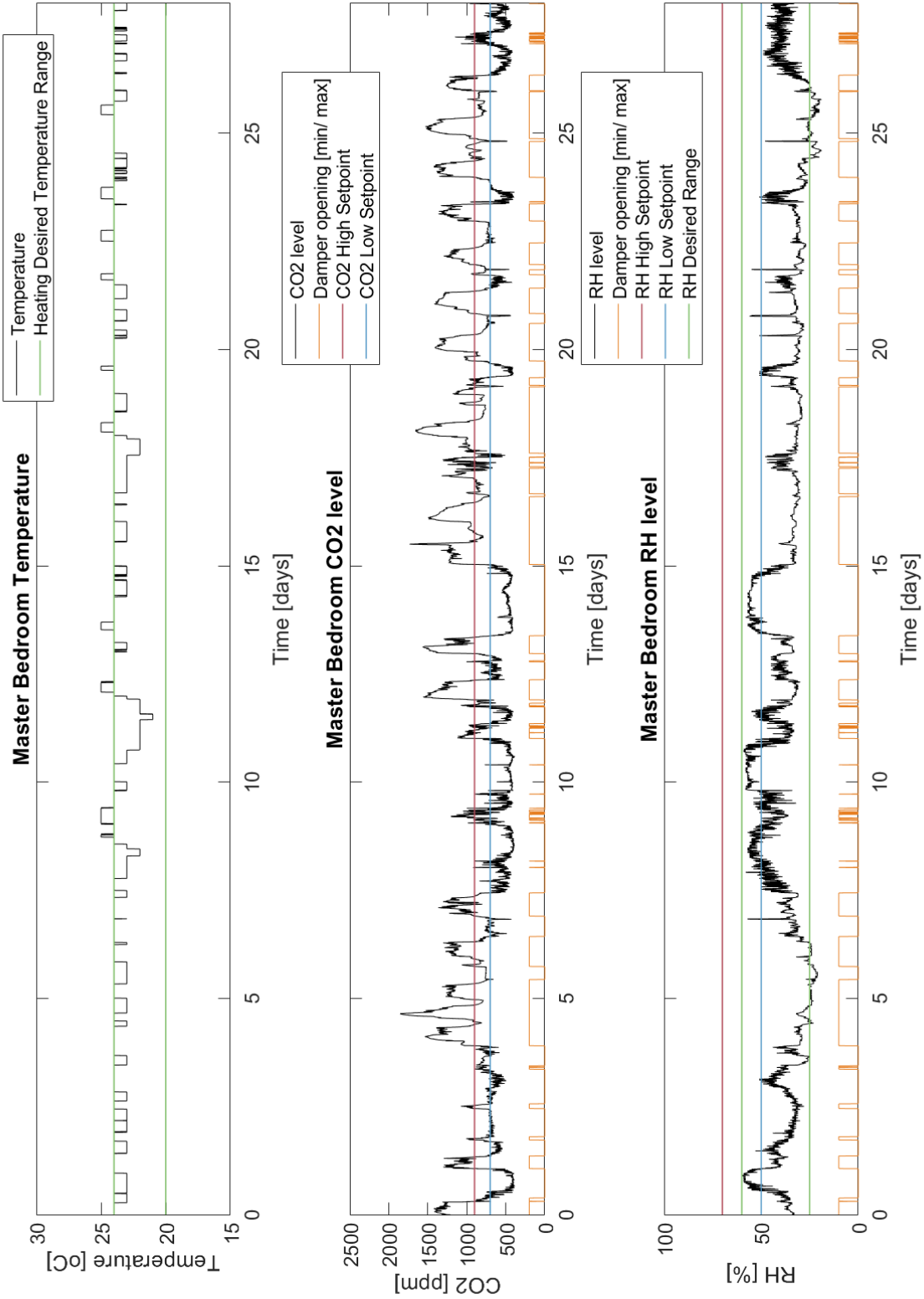


Figure 27: Graphs for temperature, CO₂ level and relative humidity during the month of February – Master Bedroom

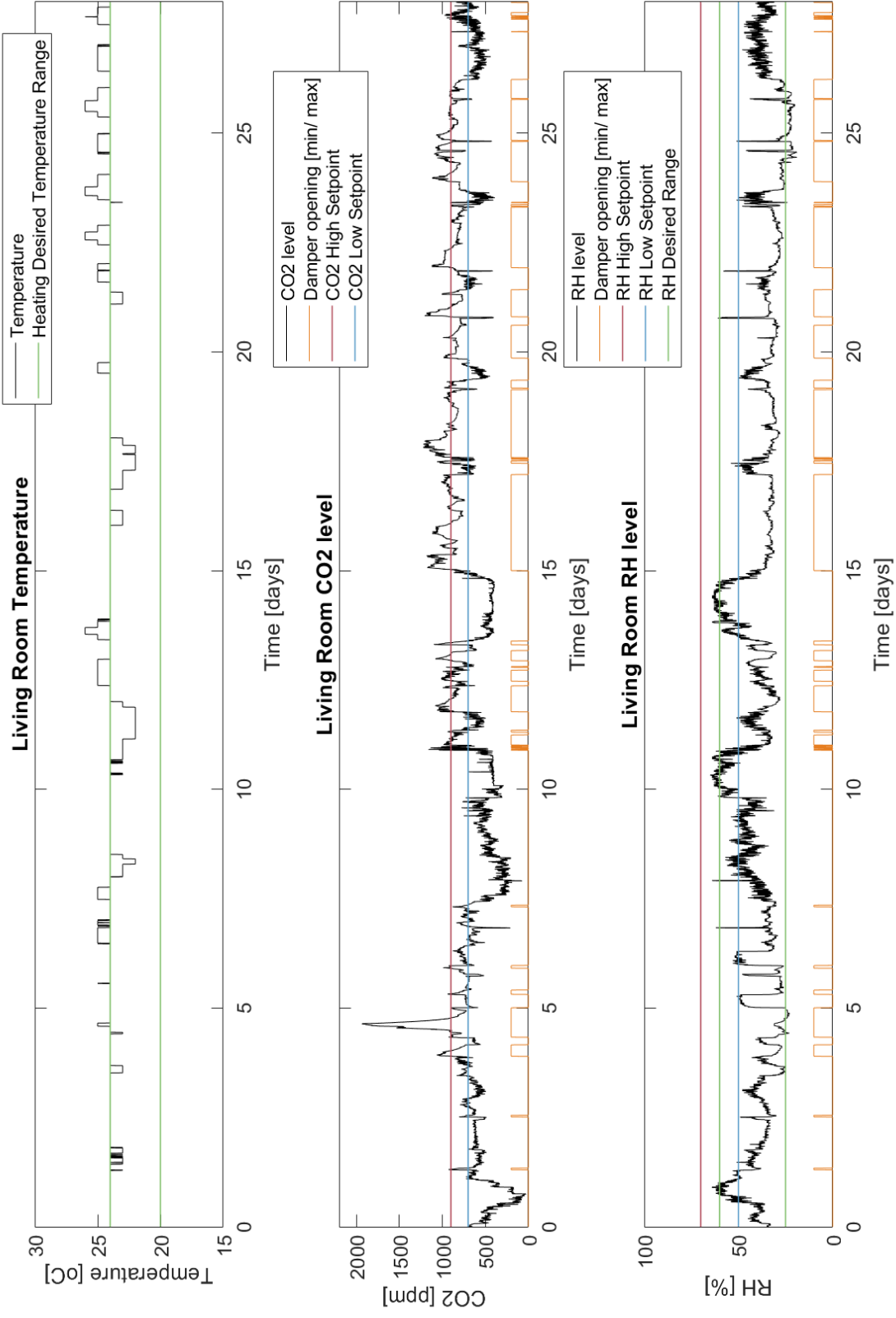


Figure 28: Graphs for temperature, CO₂ level and relative humidity during the month of February – Living Room

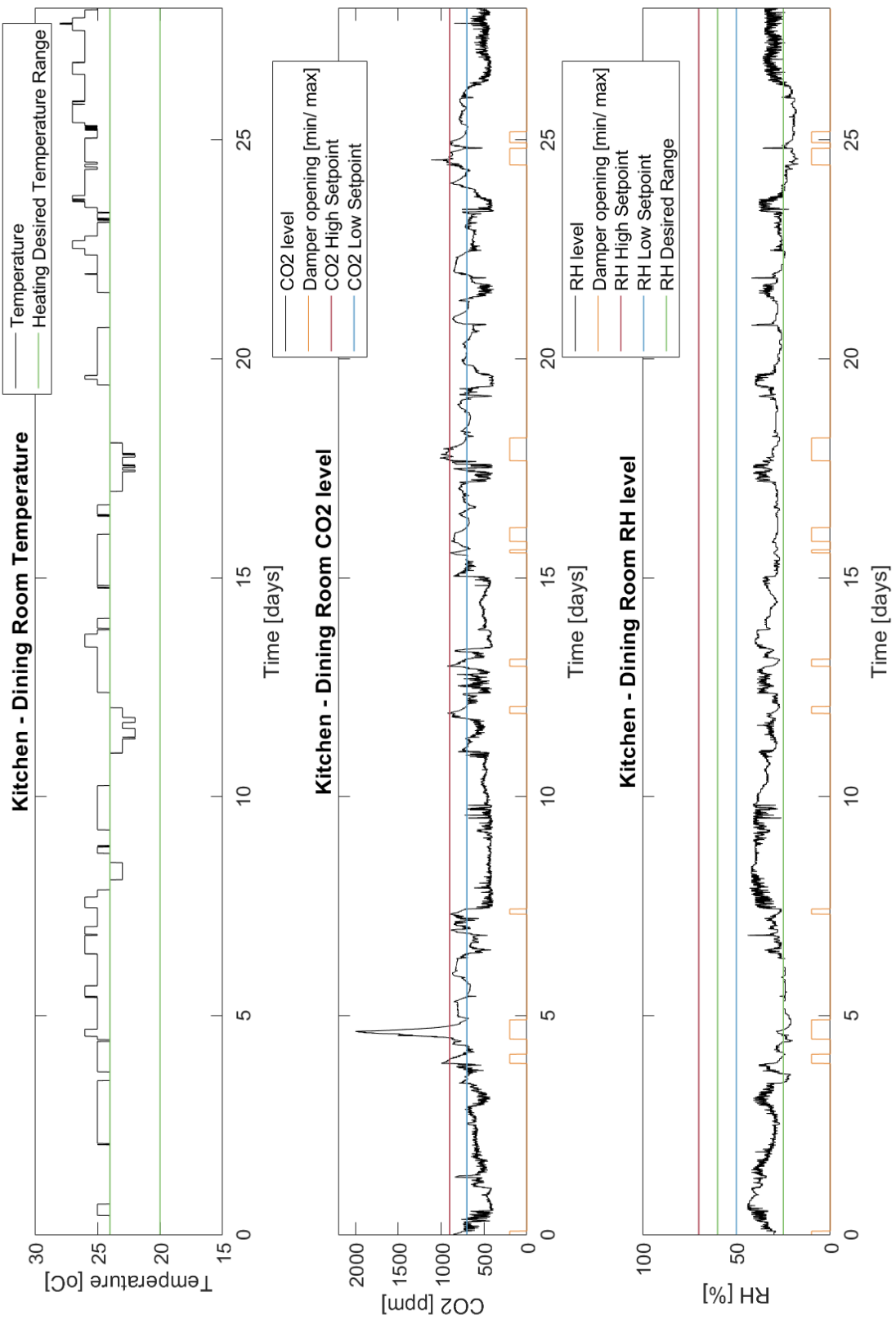


Figure 29: Graphs for temperature, CO₂ level and relative humidity during the month of February – Kitchen/ Dining Room

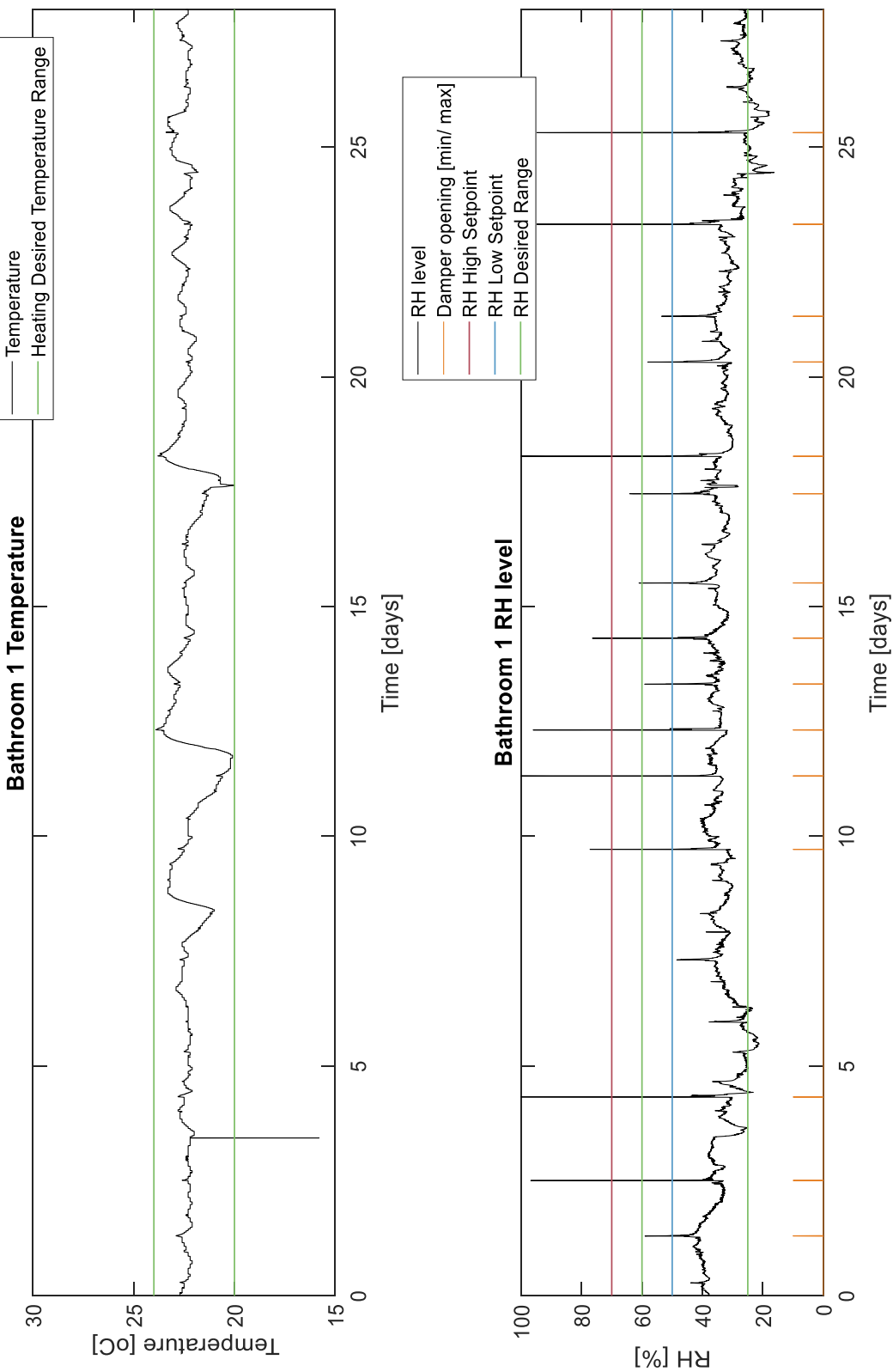


Figure 30: Graphs for temperature, CO₂ level and relative humidity during the month of February – Bathroom 1

4.4 Entire period (December, January, February)

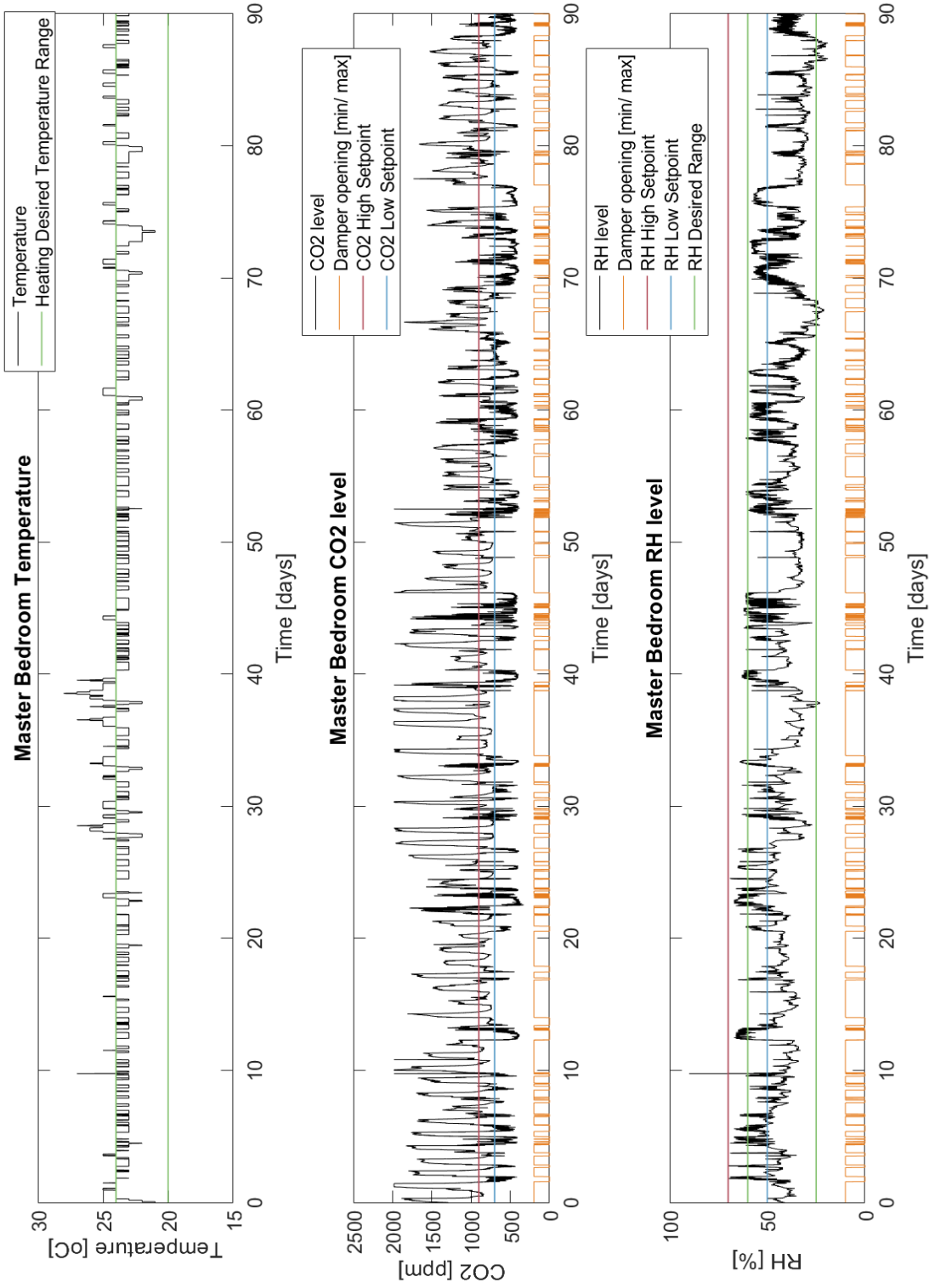


Figure 31: Graphs for temperature, CO₂ level and relative humidity during the 3 months period – Master Bedroom

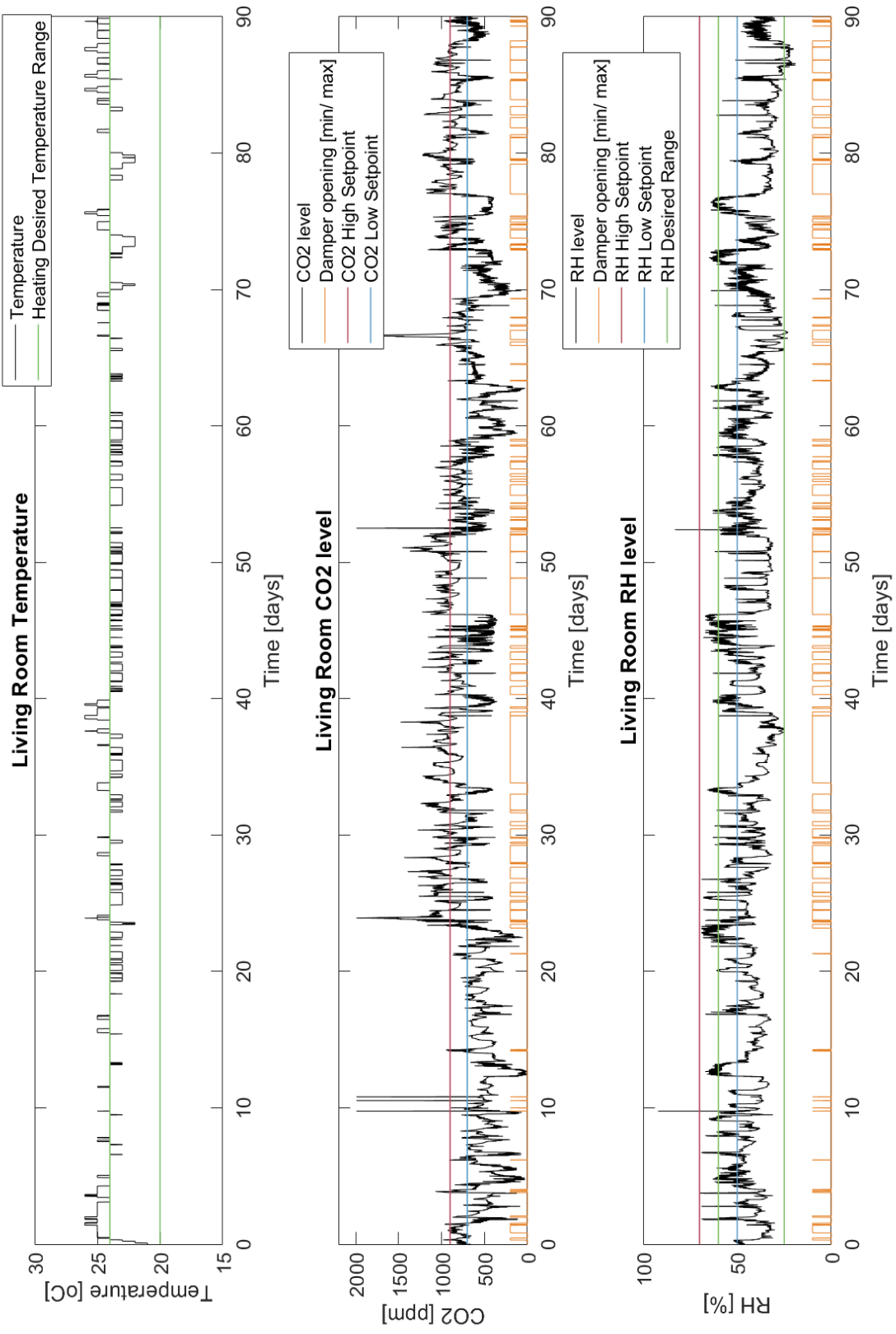


Figure 32: Graphs for temperature, CO₂ level and relative humidity during the 3 months period – Living Room

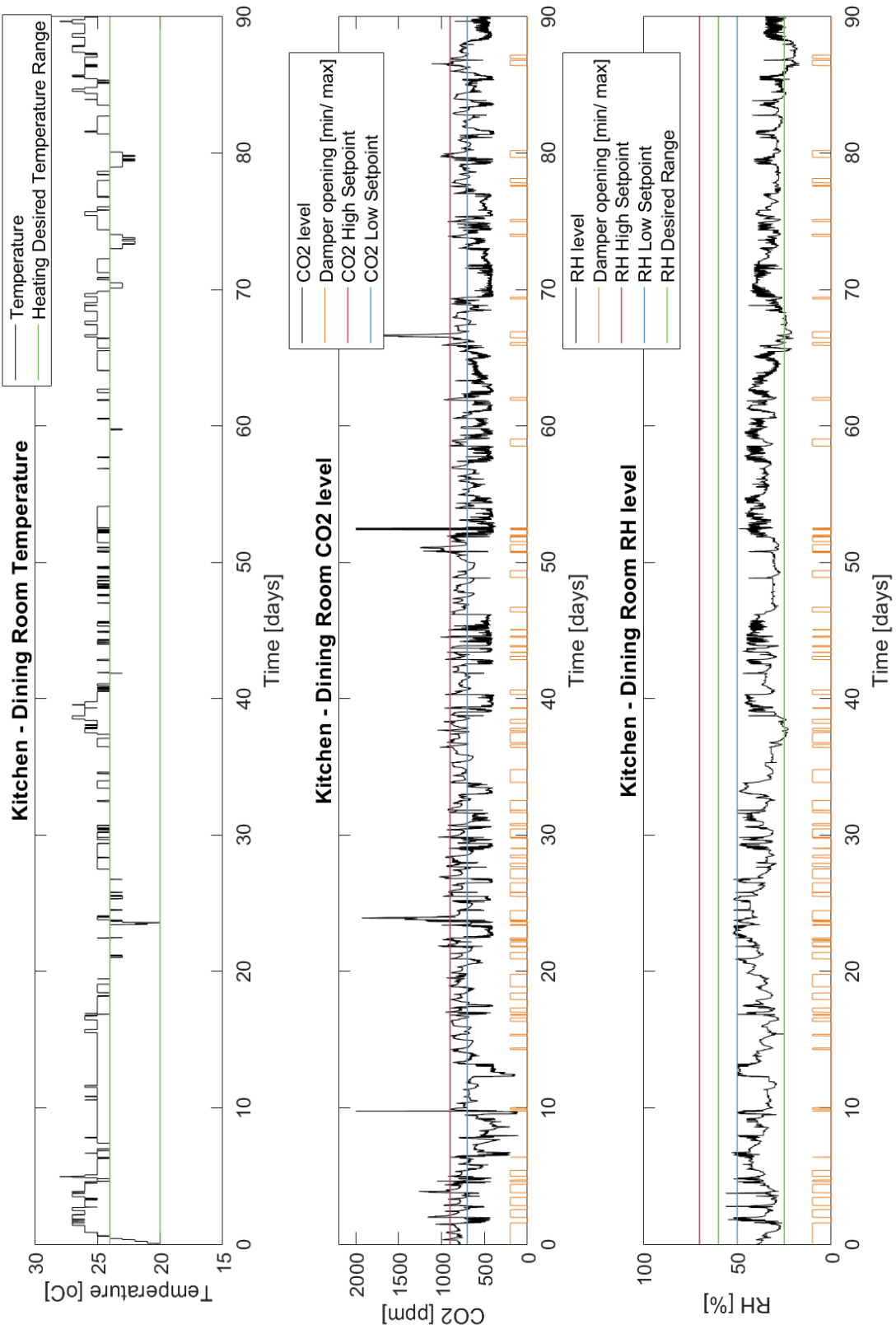


Figure 33: Graphs for temperature, CO₂ level and relative humidity during the 3 months period – Kitchen/ Dining Room

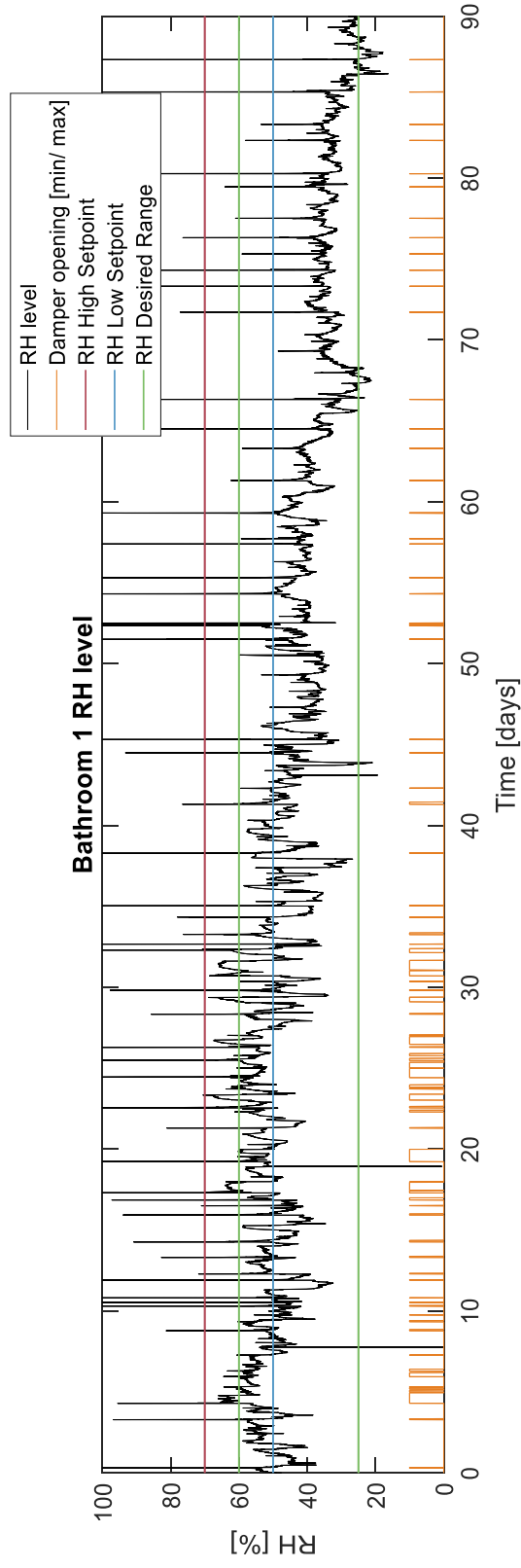
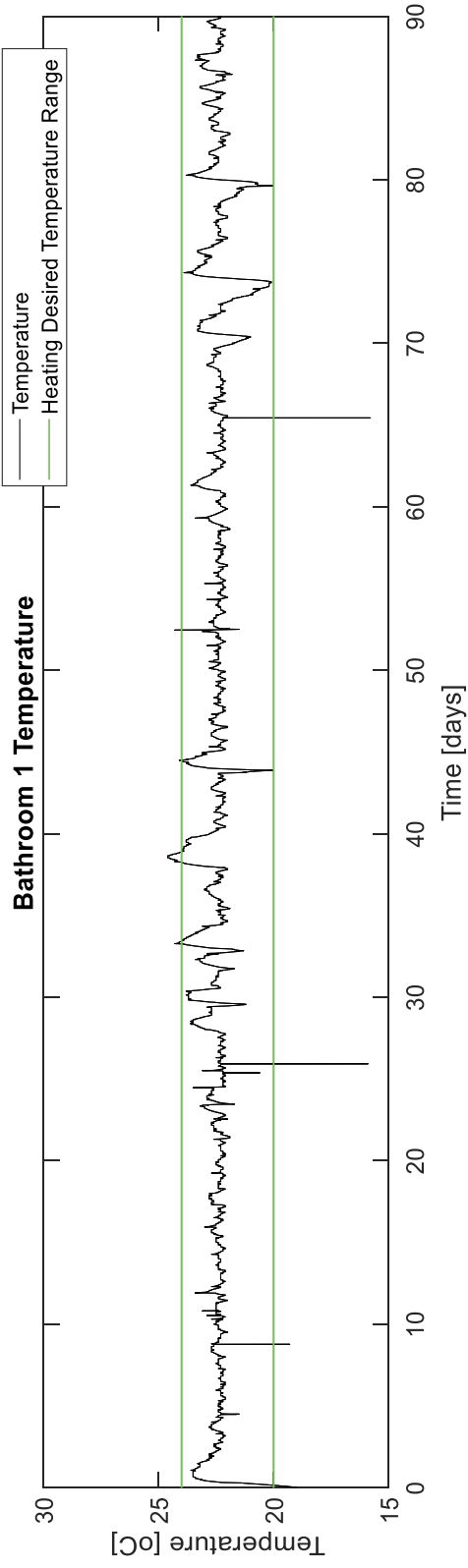


Figure 34: Graphs for temperature, CO₂ level and relative humidity during the 3 months period – Bathroom 1

Recent publications in the DCE Technical Report Series

