



Aalborg Universitet

AALBORG UNIVERSITY
DENMARK

Disclosing the double mutualist role of birds on Galápagos

Olesen, Jens M; Damgaard, Christian F; Fuster, Francisco; Heleno, Ruben H; Nogales, Manuel; Rumeu, Beatriz; Trøjelsgaard, Kristian; Vargas, Pablo; Traveset, Anna

Published in:
Scientific Reports

DOI (link to publication from Publisher):
[10.1038/s41598-017-17592-8](https://doi.org/10.1038/s41598-017-17592-8)

Creative Commons License
CC BY 4.0

Publication date:
2018

Document Version
Publisher's PDF, also known as Version of record

[Link to publication from Aalborg University](#)

Citation for published version (APA):
Olesen, J. M., Damgaard, C. F., Fuster, F., Heleno, R. H., Nogales, M., Rumeu, B., Trøjelsgaard, K., Vargas, P., & Traveset, A. (2018). Disclosing the double mutualist role of birds on Galápagos. *Scientific Reports*, 8(1), [57].
<https://doi.org/10.1038/s41598-017-17592-8>

General rights

Copyright and moral rights for the publications made accessible in the public portal are retained by the authors and/or other copyright owners and it is a condition of accessing publications that users recognise and abide by the legal requirements associated with these rights.

- ? Users may download and print one copy of any publication from the public portal for the purpose of private study or research.
- ? You may not further distribute the material or use it for any profit-making activity or commercial gain
- ? You may freely distribute the URL identifying the publication in the public portal ?

Take down policy

If you believe that this document breaches copyright please contact us at vbn@aub.aau.dk providing details, and we will remove access to the work immediately and investigate your claim.

SCIENTIFIC REPORTS



OPEN

Disclosing the double mutualist role of birds on Galápagos

Jens M. Olesen¹, Christian F. Damgaard¹, Francisco Fuster², Ruben H. Heleno³, Manuel Nogales⁴, Beatriz Rumeu³, Kristian Trøjelsgaard⁵, Pablo Vargas⁶ & Anna Traveset²

Life on oceanic islands deviate in many ways from that on the mainland. Their biodiversity is relatively poor and some groups are well-represented, others not, especially not insects. A scarcity of insects forces birds to explore alternative food, such as nectar and fruit. In this way, island birds may pollinate and disperse seed to an extent unseen on any mainland; they may even first consume floral resources of a plant species and then later harvest the fruit of the same species. Through this biotic reuse, they may act as double mutualists. The latter have never been studied at the level of the network, because they are traditionally considered rare. We sampled pollination and seed-dispersal interactions on Galápagos and constructed a plant-bird mutualism network of 108 plant (12% being double mutualists) and 21 bird species (48% being double mutualists), and their 479 interactions, being either single (95%) or double mutualisms (5%). Double mutualists constitute the core in the pollination-dispersal network, coupling the two link types together. They may also initiate positive feedbacks (more pollination leading to more dispersal), which theoretically are known to be unstable. Thus, double mutualisms may be a necessary, but risky prerequisite to the survival of island biodiversity.

The poor presence and small population sizes of many groups of species on oceanic islands compared to mainland standards may jeopardise survival of island animals and push them out into a wider food niche, by including more kinds of suboptimal food into their diet^{1–4}. They do so by either consuming more species or even consuming more kinds of food items of the same species, *e.g.* herbivores may consume not just foliage of a plant but also its fruit.

In particular, insects serve as a plentiful source of food to many animals, *e.g.* more than half of all bird species in the world have insects as a favourite on their menu roster⁵. This, however, turns into a problem on oceanic islands, which often have a low density of insects^{6–8}, but a high abundance of some vertebrate insect-consumers, especially density-compensating birds and lizards⁹. In mainland systems, birds and lizards are assumed to be either strict insect eaters, nectar drinkers or fruit/seed eaters, whereas on islands they turn more omnivorous, consuming both floral resources, fruit and seed, as well as insects^{10–12}. This is termed interaction release⁴, and is a kind of ecological release, involving an increase in the diversity of biotic interactions established by species. When small vertebrates exhibit interaction release, they may become pollinators and seed dispersers to many plants, which also suffer from this paucity of insects for their pollination. In a world of such scarcity, island vertebrate consumers may even “reuse” the same food plants, that is, first harvest their floral resources and then later in the season the fruit of these and thus serve as both pollinators and seed dispersers of the same plant species, *i.e.* they become ‘double mutualists’ (*sensu*^{13,14}). Interaction release and also omnivory in general may affect ecosystem stability^{15,16}, but how this is modified by double mutualisms is unknown. Double mutualisms are poorly studied, but have been regarded as anecdotal and only single cases in a few ecosystems are known^{14,17,18}. Here, however, we disclose a frequent double pollination/dispersal mutualist role played by many members of the land bird community on the Galápagos Islands; we report the extent of this phenomenon on the archipelago, and briefly discuss its consequences for island networks and their stability in general. By stability we here mean low variance in network parameters. Finally, in a broader network context, we identify double mutualists as a special kind of network connector nodes, lowering the overall heterogeneity of nature.

¹Department of Bioscience, Aarhus University, Ny Munkegade 114, DK-8000, Aarhus, Denmark. ²Institut Mediterrani d’Estudis Avançats (CSIC-UIB), Esporles, Balearic Islands, Spain. ³Center for Functional Ecology, Department of Life Sciences, University of Coimbra, Coimbra, Portugal. ⁴Instituto de Productos Naturales y Agrobiología (CSIC-IPNA), La Laguna, Canary Islands, Spain. ⁵Department of Chemistry and Bioscience, Aalborg University, Aalborg, Denmark. ⁶Real Jardín Botánico (CSIC-RJB), Madrid, Spain. Correspondence and requests for materials should be addressed to J.M.O. (email: jens.olesen@bios.au.dk)

Received: 16 December 2016

Accepted: 29 November 2017

Published online: 08 January 2018

Numbers	2 pollinators	10 double mutualists	7 pollinators-dispersers	2 dispersers
61 pollinated plants	3p	185p	58p	
13 double mutualistic plants	2p	42p + 25 ps* + 14s	24p + 9s	4s
7 pollinated-dispersed plants		21p + 8s	12p + 1s	1s
27 dispersed plants		52s	12s	6s
Percentages	9.5% pollinators	47.6% double mutualists	33.3% pollinators-dispersers	9.5% dispersers
56.5% pollinated plants	0.63%p	38.62%p	12.11%p	
12.0% double mutualistic plants	0.42%p	8.77%p + 5.22%ps + 2.92%ps	5.01%p + 1.88%ps	0.84%ps
6.5% pollinated-dispersed plants		4.38%p + 1.67%ps	2.51%p + 0.2111%ps	0.21%ps
25.0% dispersed plants		10.86%ps	2.51%ps	1.25%ps

Table 1. Number and percentage of species and links in the total plant-bird mutualism matrix and its different functional combinations, Galápagos. p: pollination link; s: seed-dispersal link; ps: double mutualism. *Each double mutualism is counted as one interaction. 10 birds and 13 plants were double mutualists. The most generalized double mutualists were Small Ground-finch (*Geospiza fuliginosa*) and Medium Ground-finch (*G. fortis*), involved in six and five double mutualisms, respectively.

Results

We imported all observed pollination and seed dispersal interactions into a total plant-bird mutualism matrix, representing the year-round interactions of the whole archipelago (Supplementary Dataset S1). This matrix included 108 plant species (only taxa identified to species were included; 33% are human introductions) and 21 bird species (only Smooth-billed Ani (*Crotophaga ani*) and Cattle Egret (*Bubulcus ibis*) are introduced). The matrix had a total of 479 links (Table 1; each double mutualism is scored as a single interaction). Thus connectance of the total Galápagos plant-bird mutualism matrix became $479 \times 100 / (108 \times 21) = 21\%$.

All species were sorted into four groups: Single pollination mutualists (61 plant and two bird species), single dispersal mutualists (27 plants and two birds), pollination-dispersal mutualists (seven plants and seven birds; *i.e.* species with both pollination and seed dispersal links, but these were directed to different species) and double mutualists (13 plants and ten birds, *i.e.* species with some of their pollination and dispersal links directed to the same species). Thus, a substantial proportion (18%) of all plant and bird species were double mutualists, especially among the birds (48%).

All 479 links were sorted into three kinds: Single pollination mutualisms (73%), single dispersal mutualisms (22%), and double mutualisms (5%) (Table 1, Fig. 1, Supplementary Dataset S1).

The pollination and dispersal matrices had an overlap area; the grey area in Fig. 1. Here all species were involved in both pollination and seed dispersal, but not always to the same species. The overlap area included 20 plant species and 17 bird species and their 156 links, which were either single pollination links, single dispersal links or double mutualisms (Table 1). Thus, connectance of the overlap area became 46%.

Inside the overlap area, we had the smaller double mutualism submatrix; the dark-grey area in Fig. 1. Here, all species were involved in at least one double mutualism. It included 13 plant species and ten bird species and their 25 double mutualism links (Table 1). All 25 links were true double mutualisms between the same plant and animal species, and both interactions in each double mutualism were observed on the same island. In addition, the double mutualism submatrix included 42 single pollination links and 14 single dispersal links, *i.e.* a double mutualism submatrix connectance of 62%. Thus, by moving from the total matrix, to the overlap area and further into the double mutualism submatrix, connectance tripled from 21%, to 46% and to 62%, *i.e.* the double mutualisms and their bird and plant nodes constituted the most link-dense and thus most coherent part of the total network (Fig. 2).

We examined if there was any positive or negative association between pollination and dispersal, *i.e.* assuming a bird was both a pollinator and a disperser, how would that affect its chance of being a double mutualist as well, and *vice versa* for a plant? We ran 50,000 randomizations of the spread of links in the overlap matrix (Fig. 1) and counted the number of double mutualisms in both the overlap area and in the smaller double mutualism submatrix (Fig. 1). If pollination and dispersal links were established independently of each other, the probability of achieving the actual 25 double mutualisms would be 0.13 in the overlap area and 0.04 in the double mutualism submatrix (Supplementary Table S1). Thus, if a bird species was involved in both kinds of interaction it was slightly more likely to be to the same plant species, and the same for plants, than if interactions were randomly distributed, *i.e.* pollination and dispersal were weakly coupled ecosystem functions and thus, both functions might have the same underlying drivers, *e.g.* abundance.

Data on bird abundance, their body (*i.e.* beak and forehead) pollen load and the seed load in their droppings are given in Supplementary Table S4 and data on bird diet, body size, geographic range etc. in Supplementary Dataset S2. According to the literature⁵, 14 Galápagos bird species are regarded as omnivores, four as arthropod-eaters, two as herbivores, and one as carnivore (Supplementary Table S2). However, our study demonstrated a general move of the bird fauna towards floral resources and fruit consumption. The four species, which we did not score as being both pollinators and dispersers, were the omnivorous Smooth-billed Ani (*Crotophaga ani*), Sharp-beaked Ground-finch (*Geospiza difficilis*) and Española Mockingbird (*Nesomimus macdonaldi*), and the carnivorous Cattle Egret (*Bubulcus ibis*). Smooth-billed Ani, Española Mockingbird and Cattle Egret were the largest of all 21 birds, and Española Mockingbird was only observed on one island.

Abundance A_B of birds (using ringing data as a proxy for abundance) was strongly positively correlated with their archipelago linkage level L_B (Supplementary Dataset S1 and Supplementary Table S4; 19 species,

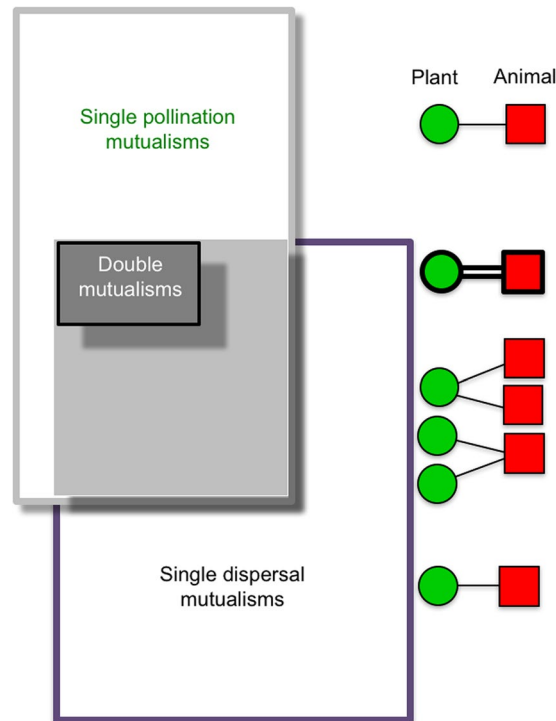


Figure 1. Plant-bird mutualism matrix, Galápagos. This network is a composite of a pollination (grey frame) and a seed-dispersal matrix (violet frame). The overlap area (grey-coloured) of the two matrices includes all species involved in both pollination and dispersal. The dark grey area within the overlap is the 'double mutualism submatrix', which includes all double mutualists and their links. A double mutualism is defined as a combined pollination and seed dispersal interaction between the same two species ('green plant' and 'red bird' in right column). In addition, double mutualist species may have single pollination and seed dispersal links to other species. Species interacting in the light grey area outside the double mutualism submatrix have both pollination and seed dispersal links, but not to the same species. The different link categories are illustrated in the column on the right.

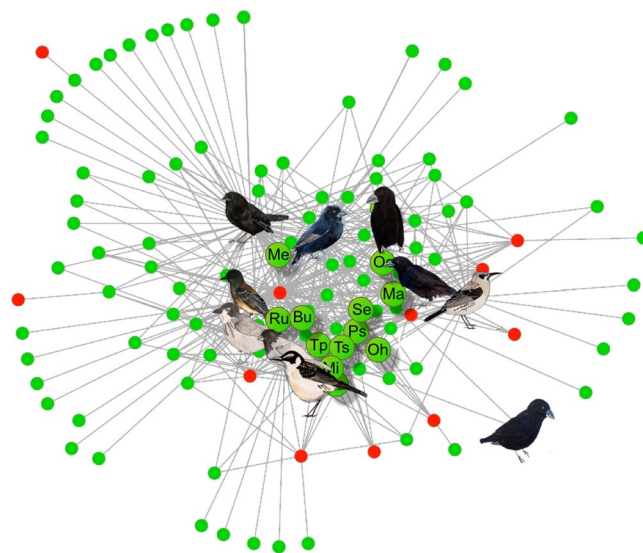


Figure 2. Plant-bird mutualism network, Galápagos. Double mutualistic plant nodes are enlarged and coloured green, their letter coding is explained in Supplementary Dataset S1. Birds are from upper left and clockwise: Small Ground-finch (*Geospiza fuliginosa*), Medium Ground-finch (*G. fortis*), Large Ground-finch (*G. magnirostris*), Common Cactus-finch (*G. scandens*), San Cristóbal Mockingbird (*Nesomimus melanotis*), Galápagos Mockingbird (*N. parvulus*), Small Tree-finch (*Camarhynchus parvulus*), Woodpecker Finch (*C. pallidus*), and Galápagos Flycatcher (*Myiarchus magnirostris*), and in the lower right corner Large Cactus-finch (*G. conirostris*) (Ill. Jens M. Olesen).

$L_B = 9.67 + 4.27 A_B - 0.07 A_B^2$, $R^2 = 0.81$, $F = 40.4$, $P < 0.001$), i.e. the more abundant birds made more interactions to plants. A_B was 2.9 times higher for double mutualists than for single mutualists. However, the difference was not significant (Wilcoxon Rank sum test $W = 23.5$, $P = 0.09$), but there was a trend for a higher double mutualist bird abundance. Abundance A_p of plants (using summed 2010–2011 counts of flowers or flower heads from Fernandina, Pinta, Santiago, Santa Cruz and San Cristóbal as a proxy for abundance; data are not included in supplementary material) was not correlated with their archipelago linkage level L_p (45 species, $L_p = 2.08 + 0.44 \ln A_p$, $R^2 = 0.05$, $F = 3.46$, $P = 0.070$). However, A_p was 6.6 times higher for double mutualists than for single mutualists (Wilcoxon Rank sum test $W = 191$, $P = 0.049$; note the P -value). Thus, abundant bird species explored a higher diversity of plant species, but not necessarily both floral and fruit resources. Abundant plants, on the other hand, did only weakly, and not statistically significantly, respond to bird diversity by making more interactions.

We used quantitative data, i.e. body load size of pollen and number of seeds in bird droppings, to compare species dependence and strength of single and double mutualists/mutualisms (Supplementary Tables S4 and S5). We did that for the pollination and seed dispersal networks separately, because we could not find any adequate “exchange rate” between the two link currencies, i.e. pollen and seed loads, that would allow us to merge the two kinds of network (see Materials and Methods). Only species strength differed significantly between single and double mutualists. For both network types, double mutualists had the highest species strength, which means that their interaction partners depended more on them than on single mutualists.

We investigated if the network was nested, i.e. if each species more often interacted with a subset of those species, which more generalized species interacted¹⁹. The total network was significantly nested ($NODF = 31.2$, $P < 0.01$), and all double mutualisms except one were located in the link-dense core of the network, i.e. the interaction core between the most generalized species (Supplementary Dataset S3). Only one double mutualism was between relatively specialized species, namely Heller’s Prickly Pear Cactus–Large Cactus Finch (*Opuntia helleri*–*Geospiza conirostris*). The high centrality (measured as high linkage level L) of the double mutualists observed in the nestedness analysis was confirmed by their higher network betweenness centrality score (double mutualists: 0.0481) compared to the other species of the network (single mutualists: 0.0028, and pollinator-disperser mutualists: 0.0148) (Supplementary Fig. S1), which means that the double mutualists played a strong role, gluing the two kinds of network together.

Finally, we also investigated if the network was modular, i.e. if the network consisted of distinct and highly linked species groups or modules²⁰. However, the total network was not significantly modular (M (observed) = 0.2535; mean M (random) \pm standard deviation of 100 random runs = 0.2598 ± 0.0051 , $P = 0.11$), i.e. the network functioned as one single coherent module.

Discussion

The Galápagos bird-plant mutualism network. In the Galápagos plant-bird mutualistic network, double mutualists constitute a substantial proportion of all plant and bird species (18%), especially the birds (48% of the bird community)^{21,22}, which irrespective of their traditionally assigned feeding preferences move towards double mutualism. The double mutualists and their interactions dominate the link-dense core of the mutualism network (high connectance, significant nestedness) and as a result, the network operates as one single, coherent module (no modularity). The high species strength of double mutualists also tells that their interaction partners (the single mutualists) depend on them both for their pollination and seed dispersal, and that these two ecosystem functions are coupled. One of the drivers of this may be high species abundance and thus high intraspecific competition for preferred food and pollinators. The high betweenness of double mutualists also suggests a coupling of the two ecosystem functions, again underlining that the two kinds of network are tightly glued together and operate as one functional unit.

Galápagos vertebrates as double mutualists. In Galápagos, 17 out of 21 bird species pollinate and disperse the seeds of plants, and ten of the birds are even involved in at least one double mutualism with some of the 13 double mutualistic plant species. Smooth-billed Ani is one of the four birds, which was not observed to harvest floral rewards. However, it does so on the island of Cuba, where it has been observed to visit flowers^{J.M. Olesen unpubl.}. Our Galápagos results are an example of biotic reuse or interaction release⁴, which confirms that island animals widen their food niche both by including more food species, but also by using more kinds of food from the same plant species; and, *vice versa*, plants also reuse the same animal species for both pollination and dispersal¹¹. We argue that the commonness of double mutualisms at the network level perhaps is a simple consequence of resource scarcity and low biodiversity on islands, especially among the most abundant species suffering the most from intraspecific competition. Even more Galápagos bird–flower/fruit interactions are known from the literature^{10,23}.

Besides the birds, other Galápagos animals may also be part of this concoction of plant mutualists, e.g. the lava lizards (*Microlophus* spp.), the iguanas, the giant tortoises, and various mammals. The lizards are both pollinators and seed dispersers²⁴, and the last three groups are important dispersers^{25,26}. Even the Galápagos snakes may disperse seeds, either directly consuming fruits, e.g. snakes consume the pulp of the invasive squash *Momordica charantia* on the Galápagos island Santa Cruz^{D. Meribeth pers. com.} or perhaps indirectly, as shown in Africa for snakes, predating seed dispersers²⁷. The endemic rodents (Oryzomyini: *Nesoryzomys* spp.) may also visit or consume flowers and fruit²⁸. In fact, in Costa Rica a species of a related genus *Oryzomys* is a pollinator²⁹. Finally, Galápagos have two bat species (family Vespertilionidae: *Lasiurus* spp.) supposed to be insect-eaters. We inspected eight specimens of one of them, *L. cinereus*, in the collection at the Charles Darwin Station, and all had pollen on their forehead^{unpubl.}. This is a surprising finding, because hitherto in other parts of the world, flower visitation in Microchiropteran bats is only known from the New Zealand endemic *Myztacina tuberculata*, the Neotropical Phyllostomidae, and two species in Vespertilionidae (*Platyrrhinus lineatus* and *Antrozous pallidus*)^{30–32}, of which

at least *Mystacina* and Phyllostomidae possess morphological adaptations for nectar foraging. Thus, like many birds and lizards on insect-poor islands⁹, bats may turn to additional or alternative food sources, e.g. plant material, in order to survive and, as we discovered, this also seems to be the case on Galápagos.

The observation of reuse of island biotic resources may be taken a step further. For example, the Small Tree-finch (*Camarhynchus parvulus*) and the Galápagos Flycatcher (*Myiarchus magnirostris*) are generally regarded as arthropod-eaters or omnivores, but are here scored as double mutualists. However, they may even be triple mutualists, using the same plant species as a source for floral rewards, seed/fruit and herbivorous insects, e.g. the flycatcher consumes floral resources and seed/mesocarp from the tree *Bursera graveolens*, but we also observed it gleaning the canopy of the tree for insects, of which some may be herbivores and hence, the bird may benefit the tree in three ways. Another example of a triple mutualism is the relationship between the Large Cactus-finch and *Opuntia* spp.²³. However, triple mutualisms may also include antagonistic foraging, such as bark stripping by birds²³. We believe triple mutualisms to be common on islands and future studies should look for triple mutualisms on both islands and mainland. These preliminary observations suggest that the trophic levels of small island networks are very entangled and blurred.

We presume double mutualisms to be prevalent on remote islands worldwide, and the trophic downgrading of arthropod-eaters to omnivory may be a simple response to a shortage of animal food³³ (however, see²³, p. 212). Downgrading also reduces the minimum required home range size, which further may boost population size and thus resistance against extinction. However, further studies are required to investigate double mutualism on Galápagos and other remote islands.

Global distribution of double mutualisms. The global distribution of double mutualisms is described in Fuster *et al.* (*submitted*), which lists more than 300 cases, especially from the tropics. They occur mostly in insect-poor environments, e.g. high mountains and oceanic islands. The latter have several times more double mutualisms than mainland sites. Globally, the double mutualists are a few ants and bees^{17,34}, c. 50 lizard species¹⁴, A. Valido & J. M. Olesen *unpubl.*, 14–51 flying foxes^{18,35}, an unknown number of Phyllostomid bats and finally, birds from many families^{36,37}. Thus, for sure, our island double mutualism observations can be repeated on other remote islands, but whether it also is a widespread community and network phenomenon is unknown. Before the introduction of the Brown Snake to the Island of Guam, this island had a rich fauna of birds, lizards and flying foxes^{38,39}, and so had Mauritius⁴⁰, Polynesia⁴¹ and New Zealand¹¹ and some of them may, although this is speculative, have served as double plant mutualists. As an additional network example, we compiled data from a subset of the rich literature about New Zealand bird-plant mutualisms and made a preliminary interaction matrix of 95 plant species, 31 bird species and 400 links (Supplementary Table S3). The proportion of double mutualisms was 9.8%, *i.e.* almost twice as high as the 5.2% from Galápagos, supporting our conclusion about double mutualisms being an island network phenomenon. However, until we get similar mainland data, we cannot say if Galápagos and New Zealand are exceptions or the rule.

Endemic island plant mutualists such as birds, lizards and tortoises are exceedingly vulnerable to introduced species⁴², and their extinction has serious consequences for the reproduction of native plants⁴³, *i.e.* invaders may destroy the double mutualism core of the island plant-vertebrate mutualism network. Although the loss of endemic vertebrate mutualists may be mitigated by introduced analogue species replacing the loss and thus tinkering the missing ecosystem functions^{44,45}.

Stability of island mutualism networks. Double mutualisms couple up pollination and seed dispersal of a plant species together in a positive feedback loop (Figs 3, 4), and such a loop may be seen as a force of divergence, amplifying any initial disturbance⁴⁶. Networks with loops or recurrent networks may be unfolded in time (Fig. 4), making it possible to track the paths of effects from species to species. If an animal makes more floral visits to a plant species, the latter may achieve more pollination and produce more fruit, which then may attract more harvesting animals and ultimately more seeds get dispersed, that is the pollination path in Fig. 4a. This may be a likely outcome, because (1) the association between pollination and dispersal in the double mutualism submatrix is positive, and (2) a substantial portion of the birds and plants are involved in double mutualisms. Consequently, the two processes pollination/nectar-drinking and seed dispersal/frugivory-granivory will enforce each other. At least in theory, this is a likely scenario. In the bird part of the loop, we also see a positive feedback: if a plant produces more floral rewards, a visiting animal harvests more energy, may produce a larger clutch, which harvests more fruit, and the animal achieves a higher reproductive success, that is the nectar-drinking path in Fig. 4a. In general, such positive feedback loops are regarded as unstable⁴⁶. Most Galápagos animal mutualists pollinate some plant species and disperse the seeds of others (the red-coloured species in Supplementary Dataset S1), and in those cases, weaker and more complex, multi-species positive loops may appear, expected to be weaker because the strength of a feedback loop is the product of all its individual interaction strengths⁴⁶; one example is shown in Fig. 4b. On the other hand, if just one link drops out, the feedback loop may break apart. If the double mutualist also is an herbivore, e.g. the Vegetarian Finch (*Platyspiza crassirostris*) (Supplementary Fig. S2a), the sign of the entire positive feedback loop switches, turning it into a negative feedback, that now may act as a stabilizer against disturbance. Thus, this interaction release may have severe consequences for stability, *i.e.* on the population growth rates of all species involved in the network.

The same goes for interaction cascades, which we define as being broader than trophic cascades⁴⁷, because they include non-trophic interactions such as pollination. If predators prey on pollinators and seed dispersers they have a negative indirect effect upon the plants, whereas if their prey are herbivores their indirect effect may become positive^{48,49} (Supplementary Fig. S2b).

Merging different mutualistic networks, as done in our link analysis, may also reveal unforeseen consequences to total network stability. Theoretically, it is predicted that if species linkage levels in each of the two networks are positively correlated (*i.e.* if, for example, a pollination generalist also tends to be a dispersal generalist), then

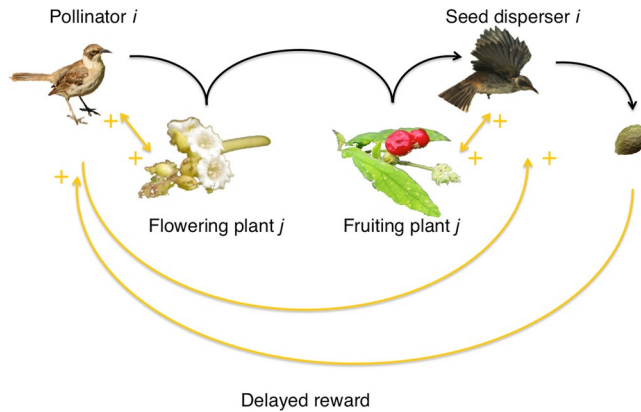


Figure 3. General plant-vertebrate double mutualism motif. The temporal delay within the motif is expected to vary with species (Ill. Ruben Heleno).

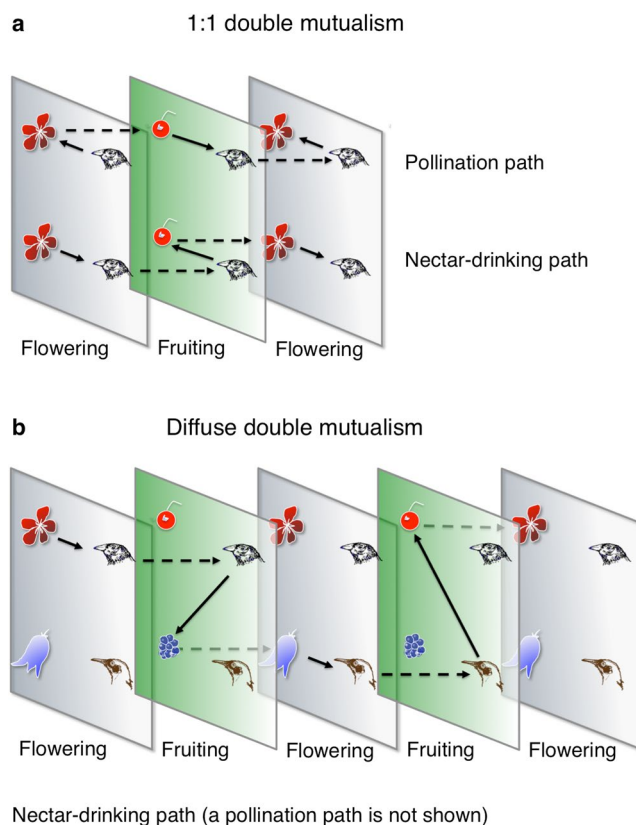


Figure 4. General plant-bird double mutualisms through alternating flowering and fruiting seasons. A solid arrow indicates a plant-bird interaction, and a dashed arrow indicates a within-species positive effect in the subsequent season. **(a)** A 1:1 double mutualism involving two interacting species. The double mutualistic interaction is shown as two opposite-running paths (pollination and nectar-drinking). **(b)** A diffuse double mutualism involving more than two species. Here for clarity reasons, only the nectar-drinking path is shown (Ill. Jens M. Olesen).

perturbations should propagate easily throughout the total network, whereas if linkage levels are negatively correlated this should not happen⁴⁸. In a correlation analysis of linkage levels for the species being involved in both pollination and seed dispersal in the Galápagos networks (Supplementary Dataset S1), we find that bird linkage levels in the pollination and the seed-dispersal network were positively correlated ($F_{1,15} = 16.5$, $P < 0.01$), whereas plant linkage levels were uncorrelated ($F_{1,21} = 1.21$, $P = 0.29$). Thus, perturbations between the two kinds of network may propagate through the bird community and less so through the plant community.

How all these stability considerations influence the final bottom line for the overall network effects of double mutualisms, including the direct and indirect links between predators and plants, we do not know. However, we

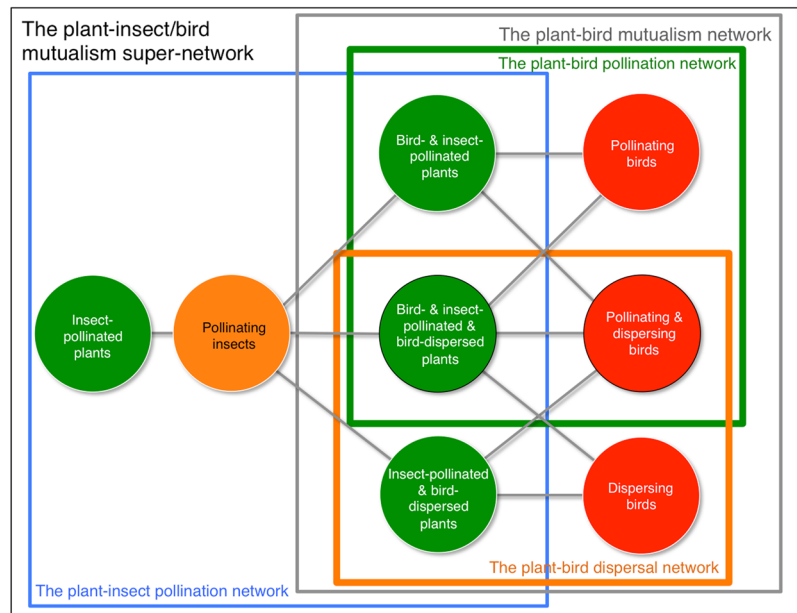


Figure 5. Hierarchical structure of the plant-insect/bird mutualism super-network, Galápagos. This network consists of a plant-insect pollination network (blue frame) and a plant-bird mutualism network (grey frame), and the latter is further composed of a plant-bird pollination network (green frame) and a plant-bird dispersal network (orange frame). Green, orange and red circles represent communities of plants, insects and birds, respectively. Double mutualists are located within the overlap between the green and orange frames.

do conclude that island networks may be fragile because of a dominance of double mutualists in the network core (*i.e.* biotic reuse being common), positive feed back loops, and strong omnivory, but also that we are far from a deeper understanding of their dynamics.

Connectors at different scale level in a hierarchical, modular network. The plant-bird mutualism network of Galápagos is organized into one single coherent module. If other groups of plant-consuming vertebrates are included, significant modularity may appear⁵⁰. However, double mutualists with their high betweenness values may counteract this, because of their functional duality (pollination and dispersal), allowing them to connect different network parts together.

In Galápagos, the plant-bird mutualism network is a part of a larger terrestrial super-network including different kinds of biotic link (Fig. 5); and with its coupling to sea and vagrant birds and mammals, this super-network becomes linked to regions outside the Galápagos archipelago, *e.g.* several seabirds migrate between North and South America and Galápagos⁵. These seabirds bring organic matter to the islands, sustaining a coastal decomposer network of invertebrates, which, in turn, are consumed by some of the landbirds in our network, *e.g.* *Geospiza* species may forage along the seashore^{pers. obs.}. Thus, our island study opens a window, albeit small, out towards a broader understanding of the interaction structure of nature on a global scale.

An initial step towards constructing a Galápagos super-network may be to merge our network with the Galápagos plant-insect pollination network²¹ (Fig. 5). At present, this larger plant-animal mutualism network encompasses 1,354 interactions between 162 plants and 233 animals of which 212 are insects. It consists of six modules; one is mainly our bird pollination/dispersal module, and the remaining five are mainly insect pollination modules^{unpubl.}. In this network, 42 species are connectors (16 plants, 20 insects and six birds), linking modules together. The plant connectors link to both insects and birds, because of the way the network is constructed.

Thus, at each hierarchical level (*i.e.* lowermost level—bird pollination or dispersal; intermediate level—general vertebrate (birds, lizards, tortoises etc.) mutualisms; and uppermost level—animal (vertebrates and insects) mutualisms), the Galápagos ecological networks are built from modules linked together by connecting species. The latter have a richer link diversity and functional versatility than other species, and because of that they may operate on several hierarchical levels, gluing species and modules of different functionality together^{51,52}, ultimately increasing overall network interdependency. That means connectors reduce the level of modularity and thus overall heterogeneity in their networks. One strong group of connectors is the double mutualists, and their high prevalence, at least on Galápagos and New Zealand, is a signature of insularity (Fuster *et al. submitted*), being characterized by resource limitation, interaction release and biotic reuse.

General conclusions. We see a scenario, where a paucity of insect food and perhaps also large predators force or allow birds and other vertebrates to widen their food niche and act as connectors or even as double mutualists, thereby reducing network heterogeneity, which ultimately may destabilize the network⁵³. The strong occurrence of species on islands being double mutualists is an unprecedented phenomenon in island biology (Fuster *et al. submitted*). However, it is a finding affecting not only our view of island ecosystems, but also our

understanding of the importance of multi-functionality in ecosystems in general as a homogenizing factor in the hierarchical organization of nature. To Galápagos, the conservation of animal mutualists should have a strong positive side effect upon the preservation of large parts of the native flora, which, however, risk extinction because the same animals are reused *en masse* as double mutualists and because of their predator naivety often fall as the first victims to human colonization of oceanic islands⁴¹.

Materials and Methods

Study areas, periods and sampling. The Galápagos Islands lie on the Equator in the Eastern Pacific Ocean, 960 km off the coast of South America. This 0.5–4 MY old volcanic archipelago is composed of 18 islands larger than 1 km² and numerous smaller islets.

Galápagos has an extant flora and fauna of ~1,400 species of flowering plants (~60% of these are introduced), ~2000 species of insects (~45% introduced), 35 species of land birds (9% introduced), and 26 species of lizards (19% introduced), and finally, the giant tortoises^{54–56}.

We made short expeditions to 12 of the islands in 2010–2014. In 2010.02.07–22 (year.month.from day-to day), we visited the islands of Floreana, Fernandina, Pinta, and Santiago; in 2011.02.04–26, Fernandina, Pinta, Santiago, San Cristóbal, Santa Cruz, and Santa Fe; in 2012.02.04–18, Española, Santa Fe, Genovesa, and Marchena; in 2013.02.18–28, Santa Cruz, Isabela, Pinzón, and Floreana; and in 2014.04.26–05.15, San Cristóbal, Fernandina, Isabela, Pinta, and Santiago). Six of us (AT, BR, JMO, MN, PV, RHH) spent single days on Floreana, Santa Fe, and Pinzón, and periods of three consecutive days on the other islands.

In addition, during an uninterrupted stay by one of us, RHH, from March 2010 to February 2011, data were collected from a set of sites on the two most human-populated islands, Santa Cruz and San Cristóbal: Eight sites on Santa Cruz (in the lowland near Puerto Ayora and in the highland at Media Luna) and San Cristóbal (lowland: La Galapaguera; highland: El Junco, see^{4,10} for locality coordinates) were sampled with equal effort. Each site was visited every other week during the fruiting season (see¹⁰ for a table of monthly fruit availability in study areas; most species fruited in the first half of the year), if weather conditions allowed, from February to July during the hot and rainy season (64–2769 mm at coast level), and once per month during the drier and colder season (almost no rain in the lowland). During the study years, January–May 2010 was an El Niño episode, *i.e.* very hot and humid, according to the ONI index (Oceanic Niño Index). On these two islands, we ran 18 mist net sessions. Sampling effort was estimated to be similar on Santa Cruz and San Cristóbal: ~1180 net meter hours/(month × island). Mist nets were opened at sunrise and stayed open for six hours, and were inspected every 20 min for birds. The length of each net was 9 m. In 2011, the sites were resampled but only during the flowering peak (hot season) between January and May.

In addition, mist nets were run on ten other islands (Floreana, Fernandina, Pinta, Santiago, Santa Fe, Española, Genovesa, Marchena, Isabela, and Pinzón), but only in the lowland, three days and five people per island: ~486 net meter hours/(month × island)⁴.

A sampling unit was an individual bird and each unit informed us about interactions between a bird individual and the flowering and fruiting plant species it had visited. At each study site, a total of 2,463 birds were marked with individually numbered metal rings and only one pollen load sample and faecal dropping were collected per individual in order to avoid pseudo-replication (Supplementary Table S4). However, if the same bird was captured on different months, the captures were considered as independent sample units. Although recaptures of marked birds were relatively rare (8% of ringed birds, Supplementary Table S4).

Upon arrival at an island, we first explored an area of about 1 km² around the disembarkation point (mainly for logistical reasons, because we were not allowed to overnight on islands), and recorded all plants in flower for our pollen reference collection. Plant identifications followed ref.⁵⁷ and information available at the Charles Darwin Foundation Herbarium. Nine hundred and ninety pollen smears were made from beak, throat and forehead of individually sampled birds by swabbing a small cube (3 mm³) of glycerine jelly, stained with fuchsin, on their beak and peri-mandibular feathers. The gelatine cube was then placed on a microscope slide, which was covered and melted by a weak heat source (a lighter) to produce a single layer of stained pollen grains. Preparations were sealed with clear nail polish, labelled and stored. Pollen grains were later identified by means of a reference collection and counted under a light contrast microscope at the Charles Darwin Station⁵⁸. Data from each site were pooled and used to build year-round pollination networks. Interaction strength in the constructed networks was estimated as mean number of pollen grains/mm². All pollen grains within an area of 79–504 mm² on the slide were counted, varying with pollen grain density (Supplementary Table S4).

Captured birds were left for up to 30 min in ringing bags to defecate. Their droppings were individually stored to evaluate seed dispersal. Intact seeds in 2,348 droppings were extracted and identified under a dissecting microscope by comparison with a seed reference collection in the Charles Darwin Foundation⁵⁹. Viability of seeds was tested in two ways: (1) seeds were sown in trays of 104 units filled with a substrate composed of agricultural soil, volcanic lapilli and turf (2:1:1 ratio). In a shaded greenhouse, soil in trays was kept moist throughout the entire experiment. Seedling emergence was recorded for two years: every other day during the first year and once a week during the second year. In addition, (2) we performed a seed viability analysis, by applying 2,3,5 triphenyl-2H-tetrazolium chloride diluted to 0.1% for 24 hr in the dark and at room temperature. Data from each site were pooled and used to build year-round seed dispersal networks. Interaction strength in the constructed networks was estimated as the mean number of viable seeds of a plant species per dropping per bird species (Supplementary Table S4).

All permissions to do field work on all islands were granted to us by the Galápagos National Park Directorate, which also approved all our experimental protocols and the study in general. In addition, all methods were performed in accordance with the relevant guidelines and regulations from the Directorate. All our applications and permissions are archived at the Galápagos National Park Directorate, Puerto Ayora, Santa Cruz, Galápagos.

Analysis. Hitherto, 1-layered ecological networks, *i.e.* isolated networks of only one kind of interaction, are by far the most studied. However, recently, network analysis has adopted a multi-layered approach⁶⁰, in which variability in time, space and link type is stressed. As we understand the definitions of different multi-layered networks given in Ref.⁶⁰, our study network is type *c* in their Fig. 1 (“Networks with different interaction types that are connected through shared species. Layers are ‘diagonally coupled’, so interlayer edges occur only between shared species⁶⁰). Here, we pooled pollination and seed dispersal data from all study sites in order to build an all year-round qualitative, 2-layered *plant-bird mutualism network*. In the future, most network metrics have to be reassessed when the field moves from 1- to multi-layered network analysis, *e.g.* should the potential number of links be 2 x no. animal species x no. plant species, when we calculate connectance in a 2-layered network. Together with the *plant-insect pollination network* our study network constituted the *plant-insect/bird mutualism network* of the archipelago (Fig. 5). Such a combined network is here termed a super-network⁵². ‘Qualitative’ means that only information about presence or absence of interactions between species was used. We did obtain link strength data expressed as pollen load size in the pollination network, and as number of viable seeds per dropping in the dispersal network. However, this information was only used in a comparative analysis between single and double mutualists and mutualisms of species dependencies and strength⁶¹, keeping the two kinds of interactions (pollination, seed dispersal) separated. We did that because we were unable to find an adequate exchange rate between the two kinds of link strength measures, which would be needed in order to build a robust, quantitative, multi-layered plant-bird mutualism network (but, see⁶² for an example). However, we stress that no two links are alike in the real world, not even within classic 1-layered networks like a pollination network.

We analysed the level of network nestedness *NODF*, *i.e.* the extent to which the link set of a species is nested within the link sets of other species of its community¹⁹. In order to do so, we used the *ANINHADO* algorithm, which calculates the *NODF* value for a given network. The value of the *NODF* parameter lies within the interval [0 (non-nested) and 100 (perfectly nested)]. The significance of the empirical *NODF* value was estimated by comparing it to a distribution of *NODF* values generated from 1000 random networks of a size similar to the empirical one and constructed according to a specific null model termed *Ce* (see⁶³ for details). We used information about the nested structure of the network to locate the position of the cluster of double mutualists in the plant-bird mutualism network.

In the plant-bird mutualism network, we also looked for small groups of highly linked species or modules^{20,64}. To do so, we made a modularity analysis, using the software *NETCARTO*⁶⁵, which calculates level of modularity *M* and the number of modules, and describes the identity and distinctness of each module in the network. The significance of the empirical *M* value was estimated by comparing it to a distribution of *M* values generated from 100 random networks of a size similar to the empirical one and constructed according to a given null model (see^{20,65} for details).

In order to quantify network centrality of each species and the extent to which species connect the pollination and seed dispersal parts of the network, we calculated the betweenness centrality of each species of bird and plant, using the software *PAJEK*⁶⁶. Betweenness is a scaled measure of the centrality of a species *i*, based on the number of shortest paths from all species to all others, that pass through *i*.

References

- Gulick, A. Biological peculiarities on oceanic islands. *Quart. Rev. Biol.* **6**, 405–427 (1932).
- Crowell, K. Reduced interspecific competition among the birds of Bermuda. *Ecology* **43**, 75–88 (1962).
- Blanco, G., Laiolo, P. & Fargallo, J. A. Linking environmental stress, feeding-shifts and the ‘island syndrome’: A nutritional challenge hypothesis. *Pop. Ecol.* **56**, 203–216 (2014).
- Traveset, A. *et al.* Bird-flower visitation networks in the Galápagos unveil a widespread interaction release. *Nature Comm.* **6**, 6376 (2015).
- del Hoyo, J., Elliott, A., Sargatal, J., Christie, D. A. & de Juana, E. (eds). *Handbook of the Birds of the World Alive* (Lynx Edicions, Barcelona; retrieved from <http://www.hbw.com/> on [11/April/2016]).
- Andrews, R. M. Evolution of life histories: A comparison of *Anolis* lizards from matched island and mainland habitats. *Breviora* **454**, 1–51 (1979).
- Traveset, A. & Sáez, E. Pollination of *Euphorbia dendroides* by lizards and insects: Spatio-temporal variation in patterns of flower visitation. *Oecologia* **111**, 241–248 (1997).
- Gillespie, R. & Roderick, G. K. Arthropods on islands: Colonization, speciation, and conservation. *Annu. Rev. Ent.* **47**, 595–632 (2002).
- Olesen, J. M. & Valido, A. Lizards as pollinators and seed dispersers: An island phenomenon. *Trends Ecol. Evol.* **18**, 177–181 (2003).
- Heleno, R. H., Olesen, J. M., Nogales, M., Vargas, P. & Traveset, A. Seed dispersal networks in the Galápagos and the consequences of alien plant invasions. *Proc. Royal Soc. B.* **280**, <https://doi.org/10.1098/rspb.2012.2112> (2013).
- Burns, K. C. Comparative ecology of bird-pollinated and bird-dispersed New Zealand plants. *NZ J. Bot.* **51**, 206–212 (2013).
- Nogales, M. *et al.* Ecological and phylogenetical drivers of modularity in seed-dispersal networks in the Galápagos and Canary archipelagos. *Glob. Ecol. Biogeog.* **25**, 912–922 (2015).
- Olesen, J. M. In *Island ecosystems: Conservation and molecular approach* 45–86 (Centre of Biological and Geological Sciences, Funchal 2003).
- Hansen, D. M. & Müller, C. B. Pollination of the enigmatic Mauritian endemic *Roussea simplex* (Rousseaceae): Birds or geckos? *Int. J. Plant Sci.* **170**, 42–52 (2009).
- Polis, G. A. Stability is woven by complex webs. *Nature* **395**, 744–745 (1998).
- Vandermeer, J. Omnivory and the stability of food webs. *J. Theor. Biol.* **238**, 497–504 (2006).
- García, M. B., Espalater, X. & Olesen, J. M. Extreme reproduction and survival of a true cliffhanger: The endangered plant, *Borderea chouardii* (Dioscoreaceae). *PLoS ONE* **7**, e44657 (2012).
- Nakamoto, A., Kinjo, K. & Izawa, M. The role of Orii’s flying fox (*Pteropus dasymallus inopinatus*) as a pollinator and a seed disperser on Okinawa-jima Island, the Ryukyu Archipelago, Japan. *Ecol. Res.* **24**, 405–414 (2009).
- Bascompte, J., Jordano, P., Melián, C. J. & Olesen, J. M. The nested assembly of plant-animal mutualistic networks. *Proc. Natl. Acad. Sci. U.S.A.* **100**, 9383–9387 (2003).
- Olesen, J. M., Bascompte, J., Dupont, Y. L. & Jordano, P. The modularity of pollination networks. *Proc. Natl. Acad. Sci. U.S.A.* **104**, 19891–19896 (2007).

21. Traveset, A. *et al.* Invaders of pollination networks in the Galápagos Islands: Emergence of novel communities. *Proc. Royal Soc. B.* **280**, <https://doi.org/10.1098/rspb.2012.3040> (2013).
22. Traveset, A. *et al.* Contrasting patterns of continental and insular pollination networks. *Glob. Ecol. Biogeog.* **25**, 880–890 (2016).
23. Grant, P. R. & Grant, B. R. *Evolutionary dynamics of a natural population* (University of Chicago Press, Chicago 1989).
24. East, K. T. Pollen digestion in Galápagos lava lizards. *Noticias de Galápagos* **55**, 8–14 (1995).
25. Blake, S. *et al.* Seed dispersal by Galápagos tortoises. *J. Biog.* **39**, 1961–1972 (2012).
26. Traveset, A. *et al.* Galápagos land iguana (*Conolophus subcristatus*) as a seed disperser. *Integr. Zool.* **11**, 207–213 (2016).
27. Engel, T. R. Seed dispersal and plant regeneration by snakes? *Ecotropica* **3**, 33–41 (1997).
28. Clark, D. A. & Clark, D. B. Effects of seed dispersal by animals on the regeneration of *Bursera graveolens* (Burseraceae) on Santa Fe Island, Galápagos. *Oecologia* **49**, 73–75 (1981).
29. Lumer, C. Rodent pollination of *Blakea* (Melastomataceae) in a Costa Rican cloud forest. *Brittonia* **32**, 512–517 (1980).
30. Arkins, A. M., Winnington, A. P., Anderson, S. A. & Clout, M. N. Diet and nectarivorous foraging behaviour of the short-tailed bat (*Myristicivora tuberculata*). *J. Zool.* **247**, 183–187 (1999).
31. Frick, W. F., Heady, P. A. & Hayes, J. P. Facultative nectar-feeding behavior in a gleaning insectivorous bat (*Antrozous pallidus*). *J. Mamm.* **90**, 1157–1164 (2009).
32. Rojas, D., Vale, Á., Ferrero, V. & Navarro, L. When did plants become important to leaf-nosed bats? Diversification of feeding habits in the family Phyllostomidae. *Mol. Ecol.* **20**, 2217–2228 (2011).
33. Olesen, J. M., Carstensen, D. W. & Dupont, Y. L. In *Islands and evolution* 147–169 (Institut Menorquí d'Estudis. Recerca **19** 2010).
34. Leonhardt, S. D., Baumann, A.-M., Wallace, H. M., Brooks, P. & Schmitt, T. The chemistry of an unusual seed dispersal mutualism: Bees use a complex set of olfactory cues to find their partner. *Anim. Behav.* **98**, 41–51 (2014).
35. Nyhagen, D. F., Turnbull, S. D., Olesen, J. M. & Jones, C. G. An investigation into the role of the Mauritian flying fox, *Pteropus niger*, in forest regeneration. *Biol. Cons.* **122**, 491–497 (2005).
36. Fleming, T. H. & Kress, W. J. *The ornaments of life* (University of Chicago Press, Chicago 2013).
37. Rodríguez-Rodríguez, M. C. & Valido, A. Consequences of plant–pollinator and floral–herbivore interactions on the reproductive success of the Canary Islands endemic *Canarina canariensis*. *Amer. J. Bot.* **98**, 1465–1474.
38. Fritts, T. H. & Rodda, G. H. The role of introduced species in the degradation of island ecosystems: A case history of Guam. *Annu. Rev. Ecol. Syst.* **29**, 113–140 (1998).
39. Mortenson, H. S., Dupont, Y. L. & Olesen, J. M. A snake in paradise: Disturbance of plant reproduction following extirpation of bird–flower visitors on Guam. *Biol. Cons.* **141**, 2146–2154 (2008).
40. Olesen, J. M., Alarcón, M., Ehlers, B. K., Aldasoro, J. J. & Rocquet, C. Pollination, biogeography and phylogeny of oceanic island bellflowers (Campanulaceae). *Perspectives Plant Ecol. Evol. Syst.* **14**, 169–182 (2012).
41. Steadman, D. W. Prehistoric extinctions of Pacific island birds: Biodiversity meets zooarchaeology. *Science* **267**, 1123–1131 (1995).
42. Blackburn, T. M., Cassey, P., Duncan, R. P., Evans, K. L. & Gaston, K. J. Avian extinction and mammalian introductions on oceanic islands. *Science* **305**, 1955–1958 (2004).
43. Anderson, S. H., Kelly, D., Ladley, J. J., Molloy, S. & Terry, J. Cascading effects of bird functional extinction reduce pollination and plant density. *Science* **331**, 1068–1071 (2011).
44. Hansen, D. M., Donlan, C. J., Griffiths, C. J. & Campbell, K. J. Ecological history and latent conservation potential: Large and giant tortoises as a model for taxon substitutions. *Ecography* **33**, 272–284 (2010).
45. Pattemore, D. E. & Wilcove, D. S. Invasive rats and recent colonist birds partially compensate for the loss of endemic New Zealand pollinators. *Proc. Royal Soc. B.* **279**, 1597–1605 (2012).
46. Neutel, A.-M. *et al.* Reconciling complexity with stability in naturally assembling food webs. *Nature* **449**, 599–602 (2007).
47. Terborgh, J. Toward a trophic theory of species diversity. *Proc. Natl. Acad. Sci. U.S.A.* **112**, 11415–11422 (2015).
48. Knight, T. M., Chase, J. M., Hillebrand, H. & Holt, R. D. Predation on mutualists can reduce the strength of trophic cascades. *Ecol. Lett.* **9**, 1173–1178 (2006).
49. Fontaine, C. *et al.* The ecological and evolutionary implications of merging different type of networks. *Ecol. Lett.* **14**, 1170–1181 (2011).
50. Montoya, D., Yallop, M. L. & Memmott, J. Functional group diversity increases modularity in complex food webs. *Nature Comm.* **6**, 7379 (2015).
51. Ravasz, E., Somera, A. L., Mongru, D. A., Oltvai, Z. N. & Barabási, A.-L. Hierarchical organization of modularity in metabolic networks. *Science* **297**, 1551–1555 (2002).
52. Olesen, J. M. *et al.* From Broadstone to Zackenbergl: Space, time and hierarchies in ecological networks. *Adv. Ecol. Res.* **42**, 1–69 (2010).
53. Stouffer, D. B. & Bascompte, J. Compartmentalization increases food-web persistence. *Proc. Natl. Acad. Sci. U.S.A.* **108**, 3648–3652 (2011).
54. Jaramillo, P. & Guézou, A. In *Lista de especies de Galápagos de la Fundación Charles Darwin* (Fundación Charles Darwin, Puerto Ayora 2013).
55. Herrera, H. W. & Roque-Álbelo, L. In *Lista de especies de Galápagos de la Fundación Charles Darwin* (Fundación Charles Darwin, Puerto Ayora 2014).
56. Jiménez-Uzcátegui, G., Wiedenfeld, D. A., Vargas, F. H. & Snell, H. L. In *Lista de especies de Galápagos de la Fundación Charles Darwin* (Fundación Charles Darwin, Puerto Ayora 2014).
57. McMullen, C. K. *Flowering plants of the Galapagos* (Cornell University Press, Ithaca NY 1998).
58. Jaramillo, P. & Trigo, M. M. *Guía rápida de polen de las islas Galápagos* (Fundación Charles Darwin, Puerto Ayora 2011).
59. Jaramillo, P. & Heleno, R. H. *Guía rápida de semillas de las islas Galápagos* (Fundación Charles Darwin, Puerto Ayora 2012).
60. Pilosof, S., Porter, M. A., Pascual, M. & Kéfi, S. The multilayer nature of ecological networks. *Nature Ecol. & Evol.* **1**, 1–9 (2017).
61. Bascompte, J., Jordano, P. & Olesen, J. M. Asymmetric coevolutionary networks facilitate biodiversity maintenance. *Science* **312**, 431–433 (2006).
62. Sauve, A. M. C., Thébault, E., Pocock, M. J. O. & Fontaine, C. How plants connect pollination and herbivory networks and their contribution to community stability. *Ecology* **97**, 908–917 (2016).
63. Almeida-Neto, M., Guimarães, P., Guimarães, P. R., Loyola, R. D. & Ulrich, W. A consistent metric for nestedness analysis in ecological systems: Reconciling concept and measurement. *Oikos* **117**, 1227–1239 (2008).
64. Bascompte, J. & Olesen, J. M. In *Mutualism* 203–220 (Oxford University Press, Oxford 2015).
65. Guimerà, R. & Amaral, L. A. N. Functional cartography of complex metabolic networks. *Nature* **433**, 895–900 (2005).
66. Nooy, W. d., Mrvar, A. & Batagelj, V. *Exploratory social network analysis with Pajek* (Cambridge University Press, Cambridge 2011).

Acknowledgements

We thank the BBVA Foundation and The Danish National Science Research Council for funding, the staffs of the Charles Darwin Station and the Galápagos National Park Service for logistic and scientific support, and S. Chamorro and C. McMullen for taking part in the sampling of pollination data. For identification of species, we acknowledge the important assistance of P. Jaramillo and G. Jiménez-Uzcátegui, and for her assistance with seed extraction we thank D. Meribeth.

Author Contributions

J.M.O. had the idea for the study and lead the analysis and writing of the manuscript. R.H.H., M.N., B.R., P.V., A.T. and J.M.O. designed the study, and carried out the fieldwork, and all authors contributed to the analysis of data and the writing of the manuscript.

Additional Information

Supplementary information accompanies this paper at <https://doi.org/10.1038/s41598-017-17592-8>.

Competing Interests: The authors declare that they have no competing interests.

Publisher's note: Springer Nature remains neutral with regard to jurisdictional claims in published maps and institutional affiliations.



Open Access This article is licensed under a Creative Commons Attribution 4.0 International License, which permits use, sharing, adaptation, distribution and reproduction in any medium or format, as long as you give appropriate credit to the original author(s) and the source, provide a link to the Creative Commons license, and indicate if changes were made. The images or other third party material in this article are included in the article's Creative Commons license, unless indicated otherwise in a credit line to the material. If material is not included in the article's Creative Commons license and your intended use is not permitted by statutory regulation or exceeds the permitted use, you will need to obtain permission directly from the copyright holder. To view a copy of this license, visit <http://creativecommons.org/licenses/by/4.0/>.

© The Author(s) 2017