



Aalborg Universitet

AALBORG UNIVERSITY
DENMARK

Immortal time bias in standardized mortality ratios in patients with diseases associated with high mortality

Grøntved, Simon; Christensen, Ann-Eva; Pristed, Sofie Gry; Valentin, Jan

Publication date:
2017

Document Version
Publisher's PDF, also known as Version of record

[Link to publication from Aalborg University](#)

Citation for published version (APA):
Grøntved, S., Christensen, A-E., Pristed, S. G., & Valentin, J. (2017). *Immortal time bias in standardized mortality ratios in patients with diseases associated with high mortality*. Poster presented at World Congress of Psychiatry (WPA) 2017, Berlin, Germany.

General rights

Copyright and moral rights for the publications made accessible in the public portal are retained by the authors and/or other copyright owners and it is a condition of accessing publications that users recognise and abide by the legal requirements associated with these rights.

- ? Users may download and print one copy of any publication from the public portal for the purpose of private study or research.
- ? You may not further distribute the material or use it for any profit-making activity or commercial gain
- ? You may freely distribute the URL identifying the publication in the public portal ?

Take down policy

If you believe that this document breaches copyright please contact us at vbn@aub.aau.dk providing details, and we will remove access to the work immediately and investigate your claim.

Immortal time bias in standardized mortality ratios, in patients with high mortality diseases



S.Grøntved, A.Christensen, S.G.Pristed, J.B.Valentin

- Unit for Psychiatric Research, Aalborg University Hospital, Denmark

Objectives

Standardized Mortality Ratios (SMR) is used to prioritize funding in healthcare. It is important to clarify whether SMR is biased. We suspect the bias is affected by the severeness of the disease.

Methods

SMRs were calculated with different time window sizes (Figure 1) and different diseases of varying severeness (Figure 2). SMRs were compared using visual inspection and bias calculations from Suissa and Liang (data not shown).

Heuristics

A time window of a shorter length produces a larger SMR:

$$SMR = \frac{N_{actually\ dead}}{N_{expected\ dead}}$$

where,

$$N_{expected\ dead} = MR_{Background} \cdot N_{alive}$$

If we consider a period of two years, and aggregate SMR from one month time frames we see that

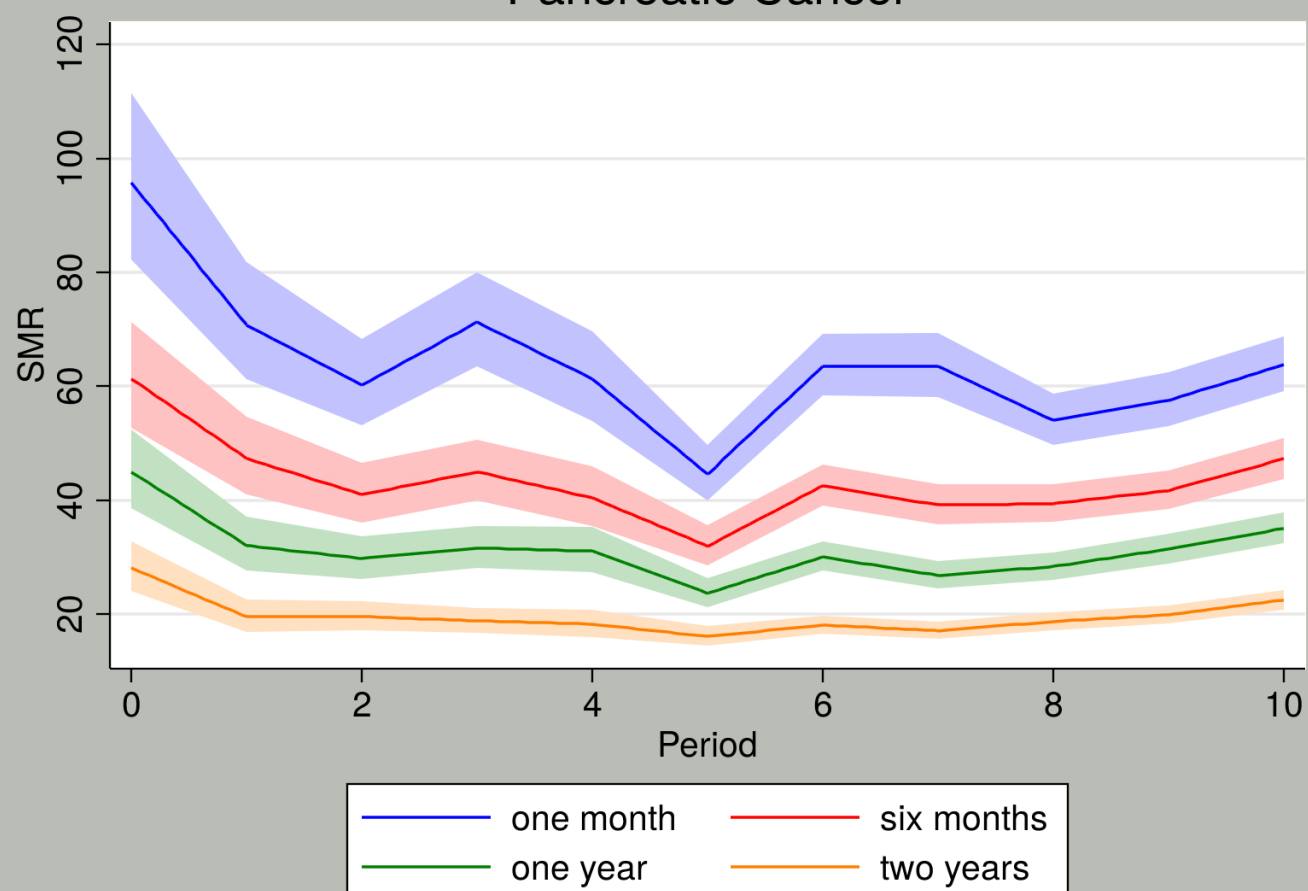
$$N_{alive, 2\ years} = \max \{ N_{alive, 1\ month}^i \}, i \in (1, 2, \dots, 24)$$

thus $N_{alive, 2\ years} \geq N_{alive, 1\ month}^i \forall i \in (1, 2, \dots, 24)$ and

$$SMR_{2\ years}^{2\ years} \leq SMR_{2\ years}^{1\ month}$$

Results: Figure 1

Pancreatic Cancer

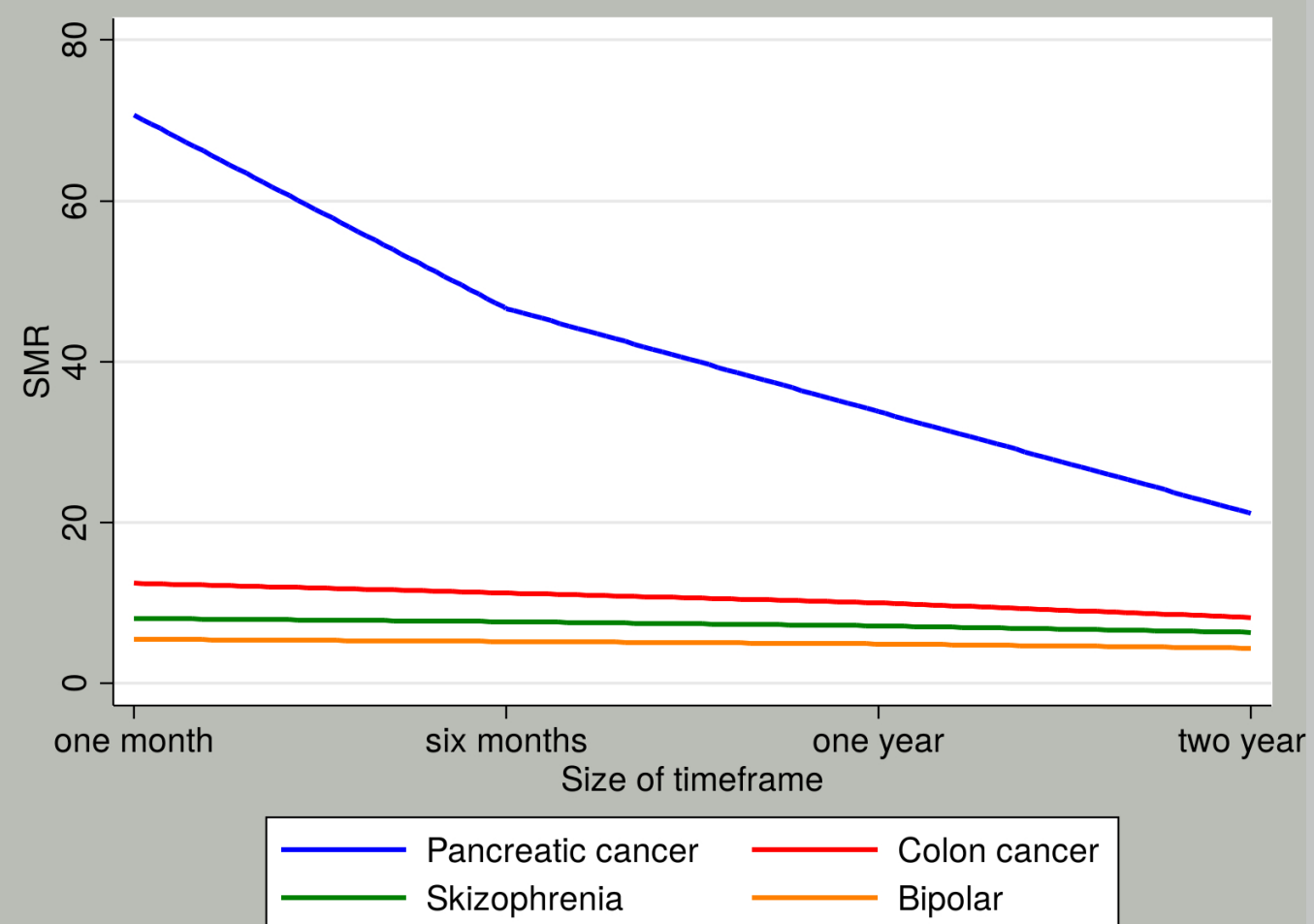


Results

Figure 1: The time window sizes affect the SMRs for pancreatic cancer; hence a larger time window produces smaller SMRs.

Figure 2: The magnitude of the time window size bias is predominantly seen in pancreatic cancer.

Results: Figure 2



Conclusion

The time window size produces bias, which worsens as the severity of a disease increases. This bias can be reduced by shortening the time window.

These results are preliminary, and calculated on faulty data, we await access to the full dataset.

We continue this project by expanding our data, to make it possible to calculate SMR based on a time window of 1-2 weeks.

We are also conducting a review of previous published material to determine whether SMR has been used inappropriately.

References

- [1] Samy Suissa. Immortal time bias in pharmacoepidemiology. *American Journal of Epidemiology*, 167(4):492, 2008.
- [2] Caihua Liang, John D Seeger, and David D Dore. Implications of immortal person-time when outcomes are nonfatal. *Annals of epidemiology*, 26(3):212-217, 2016.