

# Two-phase simulation of the pressure loss in helical channel

Chuangchuang Zhou<sup>1</sup>, Mengmeng Song<sup>2</sup>, Shungen Xiao<sup>3</sup>, Xiaojun Zhou<sup>4</sup>

<sup>1,3,4</sup>School of Mechatronic Engineering and Automation, Shanghai University, Shanghai, People's Republic of China

<sup>2,3</sup>College of information, Mechanical and Electrical Engineering, Ningde Normal University, Ningde, People's Republic of China

<sup>2</sup>Corresponding author

**E-mail:** <sup>1</sup>[chuangzhou@shu.edu.cn](mailto:chuangzhou@shu.edu.cn), <sup>2</sup>[2544824964@qq.com](mailto:2544824964@qq.com), <sup>3</sup>[xiaoshungen022@163.com](mailto:xiaoshungen022@163.com), <sup>4</sup>[xiaojun.xj.zhou@qq.com](mailto:xiaojun.xj.zhou@qq.com)

Received 14 August 2018; accepted 25 August 2018

DOI <https://doi.org/10.21595/vp.2018.20137>



Copyright © 2018 Chuangchuang Zhou, et al. This is an open access article distributed under the Creative Commons Attribution License, which permits unrestricted use, distribution, and reproduction in any medium, provided the original work is properly cited.

**Abstract.** The CFD simulations are carried out for the flows in a helical gas-liquid separator, which is installed at the inlet of the electric submersible pump (ESP) to separate gas from gas-liquid mixture and keep the efficiency of the pump. The effects of mass flux, curvature and helix angle on two-phase pressure drop have been investigated. Through theoretical analysis and numerical simulation, it is found that the mass flux of two-phase flow and the curvature of spiral passage have influence on pressure drop, while the spiral angle has little effect on pressure loss.

**Keywords:** pressure drop, air-water flow, structure parameter, helical separator.

## 1. Introduction

The gas-liquid separator is widely used in artificial lifting system, mainly installed at the entrance of centrifugal pump, sucker rod system and screw pump and so on, in order to separate as much gas as possible from the mixed flow of oil and gas underground. The separation of gas and liquid occurs in the air chamber of the separator. The guide vanes at the entrance of the separator can convert the tangential flow into axial flow, thus reducing the flow loss. Compared with the straight tube, the curvature of spiral tube, helix angle and the number of helical coils may affect the flow characteristics of the fluid. Therefore, many researchers have also carried out investigations on them. Chen and Guo [1, 2] studied the pressure loss of oil, gas and water in the spiral tube through the experimental method, and gave the calculation formula of pressure drop under the test condition. A series of studies on flow morphology and pressure loss in spiral channels with rectangular cross sections were carried out by Xia et al. [3]. It is obvious that the pressure loss of gas-liquid separator through the spiral channel with rectangular cross section is predicted by the CFD method, which has some guiding significance for the optimization and structure design of the separator.

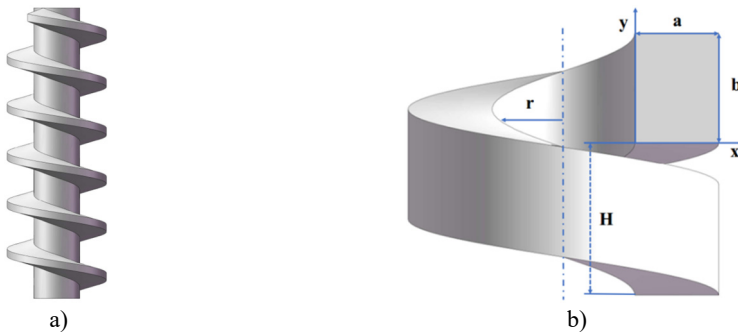
## 2. Theoretical analysis and numerical calculations

### 2.1. Characteristics of helical pipe

As shown in Fig. 1(a) and (b) respectively show the geometric structure of the spiral separator and the main parameters of the spiral channel. The separator is placed along the vertical direction. The hub and casing have diameters of  $d$  and  $D$ , respectively. The distance between two adjacent turns is defined as pitch  $H$ . The ratio of hub diameter to the casing diameter is defined as curvature  $\delta = d/D$ . The Dean number is defined as  $De = Re\delta^{0.5}$ , which is used to characterize the flow in helical pipe, where  $Re$  is the Reynolds number  $Re = \rho v d / \mu$ . The properties of the fluid used in the simulation is shown in Table 1.

**Table 1.** Properties of the fluid used in the simulation study

Properties	Air	Water
Density	1.225kg/m <sup>3</sup>	1.7894×10 <sup>-5</sup> kg/m·s
Viscosity	998.2kg/m <sup>3</sup>	0.001003 kg/m·s



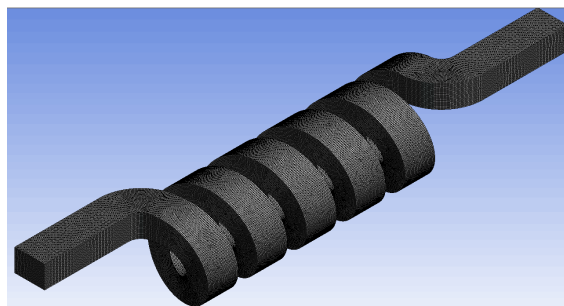
**Fig. 1.** The structure of a helical separator with its main geometrical parameters

## 2.2. Boundary conditions

The wall is provided as a fixed wall surface, and the velocity inlet and pressure outlet serve as boundary conditions for fluid to enter and exit the separator, respectively. The discretization of the continuity equation and the momentum equation uses a QUICK method. The calculation of turbulent dissipation rate, Reynolds stress and turbulent flow energy is based on the second-order upwind.

## 2.3. Numerical model

The algebraic slip mixing model can reflect the relative slip and rotation of the two-phase flow, and the numerical simulation of the gas-liquid separation of the spiral channel is carried out by the finite volume method. Fig. 2 shows the 3D CFD model for calculating two-phase flow after mesh generation. In this study, the RNG  $\kappa$ - $\epsilon$  turbulence model proposed by Yakhot and Orszag [4] is adopted.



**Fig. 2.** Whole grid of the helical channel used for analysis

Continuity equation:

$$\frac{\partial}{\partial t}(\alpha_q \rho_q) + \nabla \cdot (\partial_q \rho_q v_q) = 0. \tag{1}$$

Momentum conservation equation:

$$\frac{\partial}{\partial t} (\alpha_q \rho_q \vec{v}_q) + \nabla \cdot (\alpha_q \rho_q \vec{v}_q \vec{v}_q) = -\alpha_q \nabla p + \nabla \cdot \tau_q + \alpha_q \rho_q \vec{g} + \sum_{p=1}^n (\vec{R}_{pq} + \dot{m}_{pq} \vec{v}_{pq}) + \alpha_q \rho_q \vec{F}. \quad (2)$$

The study on the independence of grid when dividing the grid was conducted. When the interval size of grid is set to 0.0015, it has little influence on the calculation results, so as to ensure the reliability of the calculation results.

### 3. Results and discussion

#### 3.1. Comparison between numerical prediction and formula

The total pressure drop in gas-liquid two phase straight flow has three main components of frictional, acceleration and hydrostatic pressure drop. As shown in Eq. (3):

$$\left(\frac{dP}{dL}\right)_{tp} = \left(\frac{dP}{dL}\right)_f + \left(\frac{dP}{dL}\right)_a + \left(\frac{dP}{dL}\right)_g. \quad (3)$$

The gravity, acceleration and frictional pressure drop in a vertical pipe are shown as followed equations, respectively:

$$\left(\frac{dP}{dL}\right)_g = \rho_{tp} g, \quad (4)$$

$$\left(\frac{dP}{dL}\right)_a = -\frac{1}{L} \left\{ \left[ \frac{G_l^2}{\rho_l(1-\alpha)} - \frac{G_g^2}{\rho_g \alpha} \right] - \left[ \frac{G_l^2}{\rho_l(1-\alpha)} - \frac{G_g^2}{\rho_g \alpha} \right] \right\}, \quad (5)$$

$$\left(\frac{dP}{dL}\right)_{tp,f} = \frac{f_{tp} G^2}{2D \rho_{tp}}, \quad (6)$$

$$\rho_{tp} = (1-\alpha)\rho_l + \alpha\rho_g, \quad (7)$$

where  $G$  is the two-phase mixture flow rate,  $l$  represents the liquid phase and  $g$  represents the gas phase.

The separate flow model of two phase frictional pressure drop is also determined by two phase friction multiplier. Pressure drop is usually written as:

$$\left(\frac{dP}{dL}\right)_{tp,f} = \phi_{lo}^2 \left(\frac{dP}{dL}\right)_{lo} = \phi_{lo}^2 \frac{f_{lo} G^2}{2D \rho_l}. \quad (8)$$

The liquid only friction factor  $f_{lo}$  agrees well with the results in an earlier study for a helically coiled flow, as is presented by Ito [5]:

$$f_{lo} = 0.029 \frac{De}{Re} + 0.304 Re^{-0.25}. \quad (9)$$

Taylor [6] has studied the two-phase flow pressure drop in the small bending radius helical tube by the experimental method, and based on the uniform flow formula with correction coefficient, the friction pressure drop formula was written as follows:

$$\phi_{lo} = \psi \left[ 1 + x \left( \frac{\rho_G}{\rho_L - 1} \right) \right], \quad (10)$$

$$\psi = (1.29 + A_n x^n) \left\{ 1 + x \left[ \pi \left( \frac{\mu_L}{\mu_G} \right)^{0.25} - 1 \right] \right\}, \quad (11)$$

where  $A_1 = 2.19$ ,  $A_2 = -3.61$ ,  $A_3 = 7.35$ , and  $A_4 = -5.93$ .

Fig. 3 gives a comparison between the simulated pressure drops and those obtained by Eqs. (8)-(11). Pressure drops measured by the Fluent agree well with those estimated by using Taylor et al. formula although with a maximum error of 19.3 %.

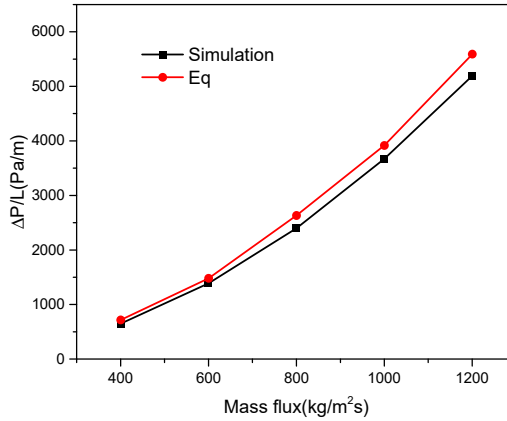


Fig. 3. Comparison of present predictions with Eqs. (8)-(11)

### 3.2. The effect of structure parameters on pressure loss

The effects of curvature and spiral angle on pressure loss are studied by numerical simulation. Fig. 4 shows pressure distribution at different sections in the flow channel, the entrance presenting a high pressure distribution. When the fluid approaches the outlet of the screw, pressure on the left and right sides of the screw channel is evenly distributed. Fig. 5 shows that for the research object of this article, when the helix angle changed, the pressure loss is almost unaffected. However, when the curvature of the helical channel changes, the centrifugal forces acting on the gas and the liquid have a great influence and the separation between the gas and the liquid is accelerated. It also generates more energy loss, as shown in Fig. 6.

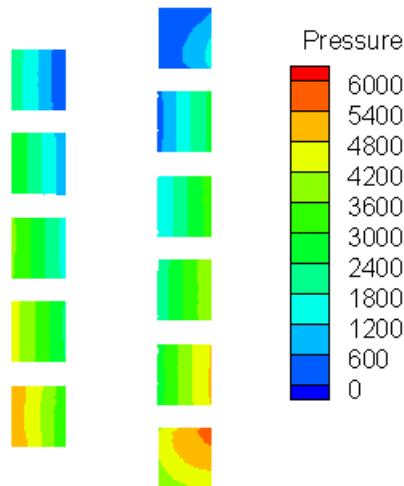


Fig. 4. The predicted pressure distribution of air-water flow at different axis location

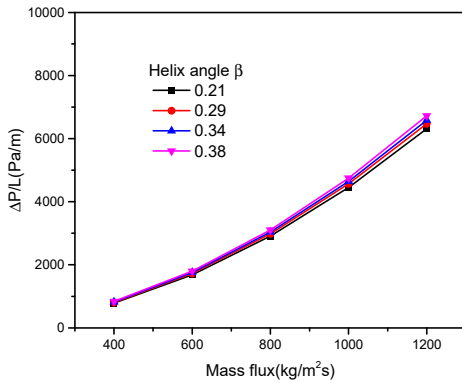


Fig. 5. The effect of helix angle on pressure drop

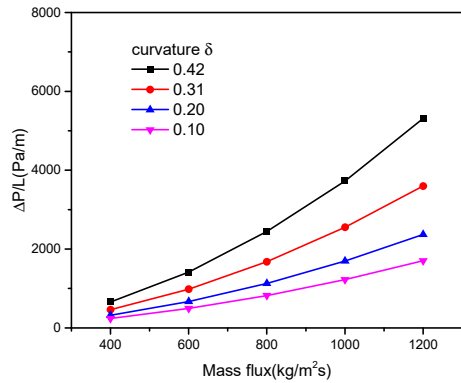


Fig. 6. The effect of curvature on pressure drop

#### 4. Conclusions

The effects of curvature and spiral angle on pressure loss at different inlet velocity were studied by numerical simulation and theoretical analysis. It is found that the change of helix angle has little effect on pressure drop, while the change of curvature will lead to the change of centrifugal force on gas-liquid two-phase flow, which will have a significant impact on pressure drop.

#### Acknowledgements

The authors gratefully acknowledge the support from Young teacher special project of Ningde Normal University (Grant Nos. 2017Q104 and 2018Q102), Major training project of Ningde Normal University (Grant No. 2017ZDK18), Education and Research Project for Young and Middle-aged Teachers in Fujian Province (Grant Nos. JT180597 and JT180601).

#### References

- [1] **Chen X., Guo L.** Flow patterns and pressure drop in oil–air–water three-phase flow through helically coiled tubes. *International Journal of Multiphase Flow*, Vol. 25, 1999, p. 1053-1072.
- [2] **Jayakumar J. S., Mahajani S. M., Mandal J. C., et al.** CFD analysis of single-phase flows inside helically coiled tubes. *Computers and Chemical Engineering*, Vol. 34, Issue 4, 2010, p. 430-446.
- [3] **Xia G. D., Liu X. F.** An investigation of two-phase flow pressure drop in helical channel. *International Communications in Heat and Mass Transfer*, Vol. 54, 2014, p. 33-41.
- [4] **Yakhot V., Orszag S. A.** Renormalization group analysis of turbulence. *Journal of Scientific Computing*, Vol. 1, Issue 1, 1986, p. 3-51.
- [5] **Murai Y., Yoshikawa S., Toda S., et al.** Structure of air-water two-phase flow in helically coiled tubes. *Nuclear Engineering and Design*, Vol. 236, Issue 1, 2006, p. 94-106.
- [6] **Taylor P., Ju H., Huang Z., Xu Y., Duan B., Yu Y.** Hydraulic performance of small bending radius helical coil-pipe hydraulic performance of small bending radius helical coil-pipe. *Nuclear Technology*, Vol. 38, 2001, p. 826-831.