

# Adult mesenchymal stem cell therapy for myelin repair in Multiple Sclerosis

Francisco J. Rivera and Ludwig Aigner

Institute of Molecular Regenerative Medicine  
Spinal Cord Injury and Tissue Regeneration Center Salzburg  
Paracelsus Medical University, Salzburg, Austria

## ABSTRACT

Multiple sclerosis (MS) is a demyelinating immune-mediated disease of the central nervous system (CNS). It is the most frequent neurological disease in young adults and affects over 2 million people worldwide. Current treatments reduce the relapse rate and the formation of inflammatory lesions in the CNS, but with only temporary and limited success. Despite the presence of endogenous oligodendroglial progenitors (OPCs) and of spontaneous remyelination, at least in early MS its levels and its qualities are apparently insufficient for a sustained endogenous functional repair. Therefore, novel MS therapies should consider not only immunomodulatory but also myelin repair activities. Mesenchymal stem cells (MSCs) represent an attractive alternative to develop a cell-based therapy for MS. MSCs display stromal features and exert bystander immunomodulatory and neuroprotective activities. Importantly, MSCs induce oligodendrocyte fate decision and differentiation/maturation of adult neural progenitors, suggesting the existence of MSC-derived remyelination activity. Moreover, transplanted MSCs promote functional recovery and myelin repair in different MS animal models. Here, we summarize the current knowledge on endogenous mechanisms for remyelination and proposed autologous MSC therapy as a promising strategy for MS treatment.

**Key words:** multiple sclerosis, remyelination, oligodendrocyte progenitor cells, mesenchymal stem cell therapy and functional recovery.

## 1. MULTIPLE SCLEROSIS: ETIOLOGY AND CLASSIFICATION

Oligodendrocytes are the myelin-producing cells of the central nervous system (CNS) and are responsible for electrical insulation and protection of axons. Electrical insulation is required for a salutatory conduction along the axons. Demyelination in the CNS as a consequence of a number of different pathologies leads to a variety of dysfunctions that cause a wide range of neurological symptoms resulting in physical and cognitive disabilities.

Multiple Sclerosis (MS) represents the most frequent demyelinating disease, and in young adults it is the major cause of neurological disabilities. There are approximately 2.5 million MS patients worldwide. MS primarily affects the Caucasian population from the Northern Hemisphere with a higher frequency in central and northern compared to southern Europe (Ebers and Sadovnick, 1993; Noseworthy et al., 2000). MS has a gender bias, since it appears more frequently in females than in males (Alonso and Hernan, 2008; Orton et al., 2006; Ramagopalan et al., 2010). The reason for this is unclear, but the higher MS incidence in females might be more related to specific female physiology (i.e. hormones) rather than to an MS-associated X-linked gene (Whitacre, 2001). MS patients suffer several neurological symptoms such as weakness, changes in sensation, spasticity, visual problems, fatigue and depression, acute/chronic pain, and paralysis.

Although the MS etiology is still under debate, it certainly involves an autoimmune response in which T and B cells react against CNS myelin. This causes inflammatory lesions in the CNS and culminates in the loss of oligodendroglia and in axonal degeneration (Kornek and Lassmann, 2003; Lassmann,

1998; Lassmann, 1999; Lassmann et al., 2007; Noseworthy et al., 2000; Siffrin et al.; Sospedra and Martin, 2005). The current concepts on MS etiology include i) dysregulation of the immune system and induction of an autoimmune response, ii) viral infections as the initial trigger, and iii) genetic and environmental risk factors (Ebers and Sadovnick, 1994; Noseworthy et al., 2000; Rodriguez, 2007; Sadovnick and Ebers, 1993; Sadovnick et al., 1996). For example, specific alleles of genes related to the immune response such as antigen-presentation (HLA, specifically DR genes), cell-adhesion (CD58), and cytokine receptors (IL7RA, IL2RA) have been described as genetic risk factors for MS (De Jager et al., 2009; Fugger et al., 2009; Svejgaard, 2008). In addition, smoking, lack of sunlight and vitamin D deficiency have been identified as environmental MS predisposing factors (Ascherio et al.; Hedstrom et al., 2009).

Based on the mode of progression, MS is classified in three major clinical forms: primary progressive (PP), secondary progressive (SP), and relapsing-remitting (RR) MS (Lublin and Reingold, 1996). The RR is the most frequent type, which is characterized by acute episodes of neurological dysfunction named relapses, followed by variable recovery and periods of clinical stability (remission). While RR-MS and SP-MS are most likely distinct phases of the same disease, PP-MS may imply completely different processes. More than 50% of the RR-MS patients eventually develop progressive neurological symptoms and sustained deterioration without a clear remission period. This form is called the SP variety of MS (Lublin and Reingold, 1996). Finally, between 10 and 15% of MS patients suffer from the PP type, which is characterized by the absence of remission periods (Lublin and Reingold, 1996).

Patients with PP-MS worsen at similar speeds, while those with the RR-MS may have very different clinical courses.

## 2. REMYELINATION: THE PHYSIOLOGICAL RESPONSE TO MYELIN DAMAGE

The CNS is generally referred to as an organ with a limited capacity for regeneration. As a consequence, traumatic injuries, demyelinating or degenerative diseases generally result in irreversible deficits. However, endogenous repair activities exist and can be activated in order to regain structure and function. The first evocative suggestion that remyelination exists in the CNS was made by Joseph Babinski at the end of the nineteenth century. In his studies on MS pathology he illustrated demyelinated axons that displayed short areas with thin myelin sheaths, which he interpreted as remyelination. Today, it is evident that myelin sheaths are re-established along demyelinated axons, restoring structure and function (Franklin and Ffrench-Constant, 2008; Lassmann et al., 1997; Smith et al., 1979; Woodruff and Franklin, 1999).

Research on animal models has provided a substantial contribution to our knowledge of the cellular and molecular mechanisms of remyelination. Animal models to study remyelination use mainly drugs that specifically induce demyelination. Cuprizone (bis-cyclohexanone-oxaldihydrazone) is one of the toxins widely used in preclinical research. It is easily administered orally through food pellets, and once in the organism it chelates copper, resulting in a systemic copper deficiency. For still unknown reasons, the cuprizone-induced copper deficiency affects in particular oligodendrocytes and induces a synchronous and rapid demyelination in various brain regions such as the corpus callosum (CC), superior cerebellar peduncles, cortex, olfactory bulb, hippocampus, optic chiasm, brainstem, etc (Blakemore, 1972; Blakemore, 1973; Kesterson and Carlton, 1971; Komoly et al., 1987; Ludwin, 1978; Matsushima and Morell, 2001; Silvestroff et al.; Skripuletz et al., 2008). Remyelination is quite evident one to two weeks after cuprizone removal and largely complete after four weeks (Matsushima and Morell, 2001; Silvestroff et al.). Other toxic agents that are used to investigate de- and remyelination are lysophosphatidylcholine (lysolecithin) and ethidium bromide (EtBr). These are, in contrast to the systemic application of cuprizone, injected locally into the desired site of demyelination. Lysolecithin is a membrane-dissolving agent which acts mainly on myelin-producing cells, while EtBr is a DNA intercalating agent that damages not only oligodendrocytes but also astrocytes (Woodruff and Franklin, 1999). The substances are generally injected into white matter CNS regions such as caudal cerebellar peduncle, spinal cord or CC, provoking a rapid local demyelination (Jablonska et al., 2010; Woodruff and Franklin, 1999; Zawadzka et al., 2010).

Myelin repair represents a crucial therapeutic goal for the treatment of MS. Therefore it is critical to understand how this reparative phenomenon occurs in adult CNS. Which are the cells responsible for remyelination? What is the molecular and cellular mechanism that underlies this process? One would expect that adult remyelination might recapitulate the full program of developmental myelination. However, for still unknown reasons, remyelinated sheaths end up thinner than the myelin sheaths produced during development (Blakemore, 1974; Ludwin and Maitland, 1984). Two hypotheses which

might explain this observation are currently under discussion: i) since myelination depends on the coordinated interaction between oligodendrocytes and axons, the thin myelin sheath formation might be a consequence of differences in the axonal properties (Franklin and Hinks, 1999); ii) alternatively, the intrinsic remyelination capability of adult oligodendroglial progenitors might be weaker compared to those of developmental progenitors. The different proliferation rates and migratory capacities of developmental versus adult progenitors might contribute to this possibility (Wolswijk and Noble, 1989). Although neither of these hypotheses has yet been confirmed, it is more likely that myelination and remyelination display relatively different cellular and molecular mechanisms.

At least two different cellular sources for newly generated myelinating oligodendrocytes have been identified: i) oligodendroglial precursor/progenitor cells and ii) subventricular zone-derived neural stem/progenitor cells. In the early 1980s, Martin Raff and co-workers identified for the first time oligodendroglial precursor/progenitor cells (OPCs). Optic nerve-derived OPCs are proliferating cells capable of differentiating into oligodendrocytes and type 2 astrocytes (also termed O-2A progenitors) (Raff et al., 1983; Raff et al., 1984). OPCs are widely spread throughout the CNS in the white and grey matter, representing 5 to 8% of total glial cells (Levine et al., 2001). OPCs can be identified through the expression of specific markers such as ganglioside antigens recognized by the A2B5 antibody (Wolswijk and Noble, 1989), chondroitin sulfate NG2 (Dawson et al., 2000; Keirstead et al., 1998), platelet-derived growth factor receptor- $\alpha$  (PDGFR $\alpha$ ) (Redwine and Armstrong, 1998) and the transcription factor olig1 (Arnett et al., 2004). There is substantial evidence that OPCs are the major source of new myelinating oligodendrocytes in adult CNS (Franklin and Kotter, 2008). First, *lacZ*-encoding retroviral tracing studies demonstrated focal lysolecithin-induced demyelination in the white matter labeled proliferating cells that give rise to remyelinating oligodendrocytes (Gensert and Goldman, 1997). Second, transplanting adult OPCs into a myelin-deficient (*md*) rat was shown to remyelinate nude axons (Zhang et al., 1999). Third, after focal demyelination OPC repopulation was observed before new mature oligodendrocytes appeared (Levine and Reynolds, 1999; Sim et al., 2002; Watanabe et al., 2002). Finally, the existence of cells with a transitional expression of markers for OPCs and mature oligodendrocytes argues for OPCs being the source of newly generated myelin in the adult CNS (Fancy et al., 2004; Zawadzka et al., 2010). Although Schwann cells have been thought to remyelinate solely axons of the peripheral nervous system, they can also be a source for CNS myelin (Dusart et al., 1992; Felts et al., 2005). Conversely, a recent report using a genetic fate mapping strategy demonstrated that CNS-resident PDGFR $\alpha$ /NG2-expressing cells (OPCs) give rise to remyelinating oligodendrocytes and to Schwann cells after chemical-induced demyelination (Zawadzka et al., 2010).

The process of OPC-derived remyelination may be divided into three steps: OPC activation, recruitment and differentiation (Bruce et al.; Franklin and Kotter, 2008). Each individual step is tightly regulated by extrinsic and intrinsic factors that act as either remyelination inhibitors or activators (Rivera et al., 2010). Upon demyelination, OPCs become mitotically active and induce the expression of oligodendrogenic genes such as *Olig2* and *Nkx2.2* (Fancy et al., 2004; Levine and Reynolds,

1999; Reynolds et al., 2002). The proliferation stimulus is mediated via astrocytes and microglia, which are activated upon demyelination to release mitogens that act on OPCs (Olah et al., 2012; Redwine and Armstrong, 1998; Schonrock et al., 1998; Wilson et al., 2006). OPC recruitment is intrinsically modulated by the cell cycle regulatory protein p27Kip1 (Crockett et al., 2005) and promoted by platelet-derived growth factor (PDGF) and fibroblast growth factor (FGF) (Murtie et al., 2005; Woodruff et al., 2004; Zhou et al., 2006). Also, the coordinated interaction between cell surface molecules and extracellular matrix (ECM) is crucial for OPC recruitment (Larsen et al., 2003). Oligodendroglial differentiation and maturation is further subdivided into the following steps: first, OPCs establish contact with bare axons, then OPCs activate myelin genes and generate the myelin membrane that finally wraps compactly around the axons forming the myelin sheath (Franklin and Kotter, 2008).

Apparently, OPCs are not the only immature cells within the adult CNS which can generate new oligodendrocytes. The original findings of newly generated neurons in the adult brain by Altman and Das (Altman, 1969; Altman and Das, 1965; Altman and Das, 1964) evoked the hypothesis of neural stem cells that are the source of new neurons in the adult brain. Neural stem/progenitor cells (NPCs) reside in a particular cellular and extracellular microenvironment called the stem cell niche, in the subgranular zone (SGZ) in the dentate gyrus of the hippocampus and in the subventricular zone (SVZ) of the wall of the lateral ventricles (Alvarez-Buylla and Garcia-Verdugo, 2002; Doetsch and Scharff, 2001; Gage, 2000). In the SVZ NPCs divide and differentiate into neuronal precursors, migrating along the rostral migratory stream (RMS) to the olfactory bulb (OB), where they functionally integrate and differentiate into granule and periglomerular neurons (Carleton et al., 2003; Doetsch and Scharff, 2001; Lois et al., 1996). SVZ-derived NPCs generate not only neurons but also oligodendrocytes. Retroviral tracing has demonstrated that NPCs give rise to a small subpopulation of Olig2-expressing transit-amplifying precursor cells that in turn generate PSA-NCAM/PDGFR $\alpha$ -positive cells (Menn et al., 2006). These cells migrate towards the corpus callosum (CC), the striatum and to the fimbria fornix, where they differentiate into oligodendrocytes (Menn et al., 2006). SVZ-derived NPCs also respond to demyelinating lesions that enhance basal oligodendrogenesis. For example, the number of SVZ-derived newly generated oligodendrocytes was significantly increased after lyssolecithin-induced demyelination (Menn et al., 2006). Moreover, SVZ-derived EGF-responsive NPCs migrate to the lesion area and differentiate into remyelinating oligodendrocytes (Gonzalez-Perez et al., 2009). Upon lyssolecithin-induced demyelination of the CC, SVZ-derived PSA-NCAM-expressing progenitors in the RMS increased their proliferation rate, migrated towards the injured CC and differentiated into oligodendrocytes and astrocytes (Nait-Oumesmar et al., 1999). The shift towards the oligodendroglial fate apparently involves the BMP antagonist chordin, since chordin is upregulated in the SVZ after demyelination, and elevated levels of chordin inhibit the generation of GAD65-positive and DCX-positive cells and redirect the newly generated cells towards the CC, where they differentiate into oligodendrocytes (Jablonska et al., 2010). SVZ-derived progenitors also respond to chronic demyelination as it is presented in a MS animal model. Here, SVZ-derived remyelinating oligodendrocytes were found in CC, fimbria

and striatum. In white matter areas remote from SVZ such as the cerebellum, however, no SVZ-derived newly generated oligodendrocytes were found (Picard-Riera et al., 2002), suggesting that unlike OPCs, SVZ-derived oligodendrogenesis is restricted to the SVZ near regions. In conclusion, the SVZ stem cell niche constitutes a source for new oligodendrocytes. A number of crucial questions are yet to be answered: i) how similar are SVZ-derived remyelinating cells and OPCs? ii) what are the molecular mechanisms of the neuronal-oligodendroglial fate switch?

Remyelination is a reparative response to myelin damage; however during MS this phenomenon largely fails. Although some MS patients generate autoantibodies against OPC epitopes such as NG2 and might destroy OPCs (Niehaus et al., 2000), the majority of data supports a failure of OPC differentiation and maturation in MS. OPCs are typically found in demyelinated areas, but they fail to differentiate and to remyelinate (Chang et al., 2002; Kuhlmann et al., 2008; Reynolds et al., 2002; Wolswijk, 1998). Also, the proliferation of glial progenitors in the SVZ and in demyelinated lesions in MS brains is 2 to 3-fold higher than in controls (Nait-Oumesmar et al., 2007) indicating that the number of OPCs is not a limiting factor for remyelination in MS. In the acute situation, the large number of immune cells and inflammatory cytokines facilitate and promote remyelination. However, chronic MS brains show microenvironmental changes that limit remyelination. These changes include a lower level of inflammatory responses, which are required for successful remyelination (Franklin, 2002). Therefore, an impaired OPC differentiation ability and variations in the CNS inflammatory status restrict remyelination capability during MS.

### 3. THE OLIGODENDROGENIC PROGRAM: MOLECULAR MODULATION OF OLIGODENDROGENESIS AND MYELIN REPAIR

The generation of new myelinating oligodendrocytes (oligodendrogenesis) is a process composed of several hierarchically structured events (de Castro and Bribian, 2005; Franklin and Kotter, 2008; Liu and Rao, 2004; Miller, 2002). During oligodendrogenesis, each step is tightly regulated by context-dependent stimulatory as well as inhibitory signals that are orchestrated in an oligodendrogenic program (Rivera et al., 2010).

Several molecular signals involved in the activation of oligodendrogenesis such as PDGF and thyroid hormone (TH) have been identified. The role of PDGF in oligodendrocyte development is well established. PDGF stimulates the proliferation of OPCs, and in the absence of PDGF, OPCs exit the cell cycle and differentiate pre-maturely (Barres et al., 1994; Raff et al., 1988). PDGF might also play an important role in the process of myelination. Excess PDGF increases the number of OPCs within demyelinating lesions (Woodruff et al., 2004), and accelerates remyelination (Allamargot et al., 2001). However, PDGF infusion also induces SVZ type B cell proliferation and tumor initiation (Jackson et al., 2006). In summary, although PDGF is an attractive candidate to enhance remyelination in MS, it might have detrimental side effects such as tumor formation. Another molecule that stimulates endogenous myelin repair is TH. This hormone induces proliferation of OPCs, promotes their differentiation and finally enhances morphological and functional maturation of post-mitotic oligodendrocytes (Ahlgren et al., 1997; Billon et al., 2001;

Rodríguez-Peña, 1999). Indeed, inhibition of this hormone leads to a decrease in oligodendrocyte numbers (Ahlgren et al., 1997; Koper et al., 1986). Consistent with these findings, TH also affects myelination and remyelination. Thus it has been shown *in vivo* in different demyelination and MS animal models that TH enhances and accelerates remyelination by promoting neural progenitor differentiation into OPCs and oligodendrocytes (Calza et al., 2002; Calza et al., 2005; Franco et al., 2008). In conclusion, TH induces OPC differentiation, maturation and enhances remyelination.

In addition to oligodendrogenesis-promoting factors, a number of molecules and transduction pathways that inhibit oligodendrogenesis and remyelination have been identified. For instance, bone morphogenetic proteins (BMPs) are rapidly up-regulated after CNS injuries and are involved in astrogliosis and glial scar formation (Fuller et al., 2007; Setoguchi et al., 2001). Upon BMP stimulation, OPCs upregulate Id2 and Id4, which sequester the pro-oligodendrogenic Olig factors and prevent them from translocating into the nucleus and thereby block their activity (Samanta and Kessler, 2004). Besides BMPs, Notch signaling has been implicated in inhibition of oligodendrogenesis. The Notch downstream targets Hes1 and Hes5 (Jarriault et al., 1998; Wang et al., 1998) inhibits neuronal and oligodendroglial differentiation and promotes astrocyte fate decision in neural progenitor cells (Artavanis-Tsakonas et al., 1999; Kageyama and Ohtsuka, 1999; Kageyama et al., 2005; Ohtsuka et al., 2001; Tanigaki et al., 2001; Wang et al., 1998; Wu et al., 2003). Notch also inhibits the expression of genes relevant for oligodendroglial maturation and myelination (Givogri et al., 2002; Jessen and Mirsky, 2008; Woodhoo et al., 2009). Therefore, Notch signaling inhibits oligodendrocyte fate decision as well as oligodendroglial differentiation, maturation and myelination. A further interesting target for remyelinating therapies is the cyclin-dependent kinase inhibitor p57kip2. In addition to cell cycle control, p57kip2 is involved in oligodendrogenesis. It has been demonstrated that in Schwann cells suppression of endogenous p57kip2 levels uncouples cellular differentiation from axonal contact (Heinen et al., 2008). A similar role for p57kip2 has now been revealed during the oligodendroglial differentiation process. Although oligodendrocytes –in contrast to Schwann cells– showed spontaneous differentiation in culture, long-term p57kip2 suppression accelerated morphological maturation as well as myelin protein expression. Moreover, p57kip2 is dynamically regulated during MS and inhibits oligodendroglial maturation (Kremer et al., 2009). Furthermore, p57kip2 regulates glial fate choice in adult NPCs, since after p57kip2 suppression a significant increase in oligodendrogenesis at the expense of astrogenesis has been noticed (Jadasz et al., 2012). Therefore, p57kip2 blocks oligodendrocyte fate decision, differentiation and maturation. Finally, Wnt signaling was shown to interfere with oligodendrogenesis during development as well as during adult CNS remyelination (Fancy et al., 2009; Shimizu et al., 2005). It has been shown that stabilization of Axin2, a negative regulator of Wnt signaling, accelerated oligodendrocyte differentiation and remyelination (Fancy et al., 2011). In summary, Wnt is an inhibitory signal for oligodendrogenesis, affecting differentiation and maturation as well as remyelination.

There are several other molecular key regulators of oligodendrogenesis and remyelination, however, a review of all factors would be beyond the scope of this review. Nevertheless,

therapeutic strategies aiming to enhance pro-oligodendrogenic activities and/or to suppress anti-oligodendrogenic signals might represent an attractive possibility for the treatment of demyelinating diseases such as MS.

#### 4. INNOVATIVE THERAPIES FOR REMYELINATION AND MS TREATMENT

Current MS treatments use disease-modifying drugs, which have proven to have only limited efficacy, primarily in the RR type of MS. These include the immune-suppressive cytokines interferon beta-1a and interferon beta-1b, the immune-modulating drug glatiramer acetate and the immune-suppressant mitoxantrone. A novel and frequently used drug is the monoclonal anti alpha4-integrin antibody natalizumab, which reduces the ability of immune cells to cross the blood-brain-barrier (BBB). All these MS treatments have major side effects, have only minor effects in the progressive forms of MS, and most likely have no repair-promoting activity.

Preclinical development of novel MS therapies widely uses the experimental autoimmune encephalomyelitis (EAE) animal model (Lassmann, 2007a). This was first described in monkeys (Rivers et al., 1933), but now mainly rodent species are used. EAE is induced by active immunization with myelin-derived antigens such as myelin oligodendrocyte protein (MOG), myelin basic protein (MBP), myelin proteolipid protein (PLP), or with immunodominant peptides from these antigens such as MOG<sub>35-55</sub>. Alternatively, EAE can also be evoked through the adoptive transfer of myelin-reactive T lymphocytes (Kabat et al., 1951; Kuchroo et al., 2002). A typical susceptible rodent will debut with the first clinical symptoms around 2 weeks after immunization and develop a RR EAE. Besides the clinical symptoms, the EAE models also resemble most, if not all the pathological characteristics of MS such as demyelination, inflammation and neurodegeneration, which makes this model particularly attractive for the development of new MS therapies.

A molecular therapy might not be sufficient to target all different aspects of MS pathogenesis. MS is a multi-factorial disease with inflammatory, myelin- and axon-degenerative components. Moreover, this disease is progressive, initiating with acute episodes characterized by T and B cell infiltration and subsequent inflammatory reactions that ultimately lead to a chronic situation encompassing an anti-regenerative microenvironment (Franklin, 2002; Lassmann, 2007b). Therefore the diseased microenvironment as well as the pathogenic parameters change during the course of MS, thus it is unlikely that a single molecular therapy would be able to cover the entire range of MS pathogenesis and provide sufficient structural and functional repair. Ideally, a MS therapy should: i) target the autoimmune-inflammatory component and exert an immunomodulatory activity, ii) target the neurodegenerative component and be neuroprotective, and iii) promote structural and functional repair mechanisms such as remyelination. In this respect, a cell therapy strategy that provides all these activities might represent an attractive therapy for MS treatment.

#### 5. MESENCHYMAL STEM CELLS TRANSPLANTATION: AN ATTRACTIVE AND PROMISING THERAPY FOR MS TREATMENT

Adult mesenchymal stem cells (MSCs) reside in the bone marrow and in most connective tissues within the body (da

Silva Meirelles et al., 2006; Minguell et al., 2001). MSCs are characterized by their capability to differentiate into cells and tissue of the mesenchymal lineage such as bone, adipose tissue, cartilage, tendons, and muscle (Minguell et al., 2001). In bone marrow MSCs also display stromal cell properties, since they regulate the activity and fate of hematopoietic stem cells (HSCs), presumably through paracrine mechanisms (Minguell et al., 2001). Therefore the dual nature of MSCs as stem and stromal cells represents an advantage for these cells to “adapt” to neural microenvironments that arise from pathological conditions such as MS. In contrast to NPCs and OPCs that are embedded in the adult CNS and thus require invasive techniques to obtain them, MSCs are highly accessible. Altogether, MSCs are multipotent, stromal and accessible cells that might represent an attractive alternative to develop an autologous cell therapy for MS treatment.

During the last decades, several research groups have evaluated the effect of MSC transplantation into the diseased CNS. MSC transplantation promotes neuroprotection and regeneration in the lesioned areas of different animal experimental models (Dezawa et al., 2001; Gerdoni et al., 2007; Hofstetter et al., 2002; Lu et al., 2005; Neuhuber et al., 2005; Zhang et al., 2005; Zhang et al., 2004). Importantly, in the case of MS, several studies have demonstrated that transplanted MSCs reduce demyelination, increase neuroprotection, modulate inflammation and enhance functional recovery in the EAE animal model (Bai et al., 2009; Barhum et al., 2010; Gerdoni et al., 2007; Gordon et al., 2008; Gordon et al., 2010; Kassis et al., 2008; Kemp et al., 2010; Lanza et al., 2009; Lu et al., 2009; Rafei et al., 2009a; Rafei et al., 2009b; Zappia et al., 2005; Zhang et al., 2009; Zhang et al., 2005; Zhang et al., 2006). A list of these studies with the most relevant findings is summarized in Table I. It seems that systemic

transplantation represents the best MSC administration route compared to others. For instance, while no negative side effects have been reported when MSCs were intravenously administrated into an EAE model, MSC-derived ectopic connective tissue has been detected within the CNS of EAE mice after intracerebroventricular transplantation (Grigoriadis et al., 2011). Clinical trials are currently ongoing with MSC autologous systemic transplantation into RR-, SP- and PP-MS patients (Freedman et al., 2010; Martino et al., 2010). Moreover, in a recent preliminary study in which autologous MSC transplantation was performed in SP-MS patients, a significant functional, structural and physiological visual improvement has been described (Connick et al., 2012). Although pre-clinical and clinical trials suggest MSC transplantation as a promising therapy for MS, more studies and long-term clinical trials are necessary to provide final conclusions.

The underlying mechanisms of the therapeutic effects of MSCs are still unknown, but they may involve one or more of the following possibilities: i) transdifferentiation of MSCs into functional integrated mature neurons and/or oligodendrocytes (MSC plasticity); ii) immunoregulatory effect of transplanted MSCs on host-derived immunoreactive cells (immunomodulation); iii) bystander effects of MSCs on the survival of damaged neurons and/or oligodendroglia (neuroprotection); iv) bystander effects of MSCs on the fate and differentiation of endogenous NPCs or OPCs present at the lesion site (remyelination).

#### 5.1 MSC neural transdifferentiation: a fact or wishful thinking?

Several studies have considered and tested the hypothesis that transplanted adult MSCs might transdifferentiate into mature neurons or glial cells, which would integrate into the

**TABLE I**

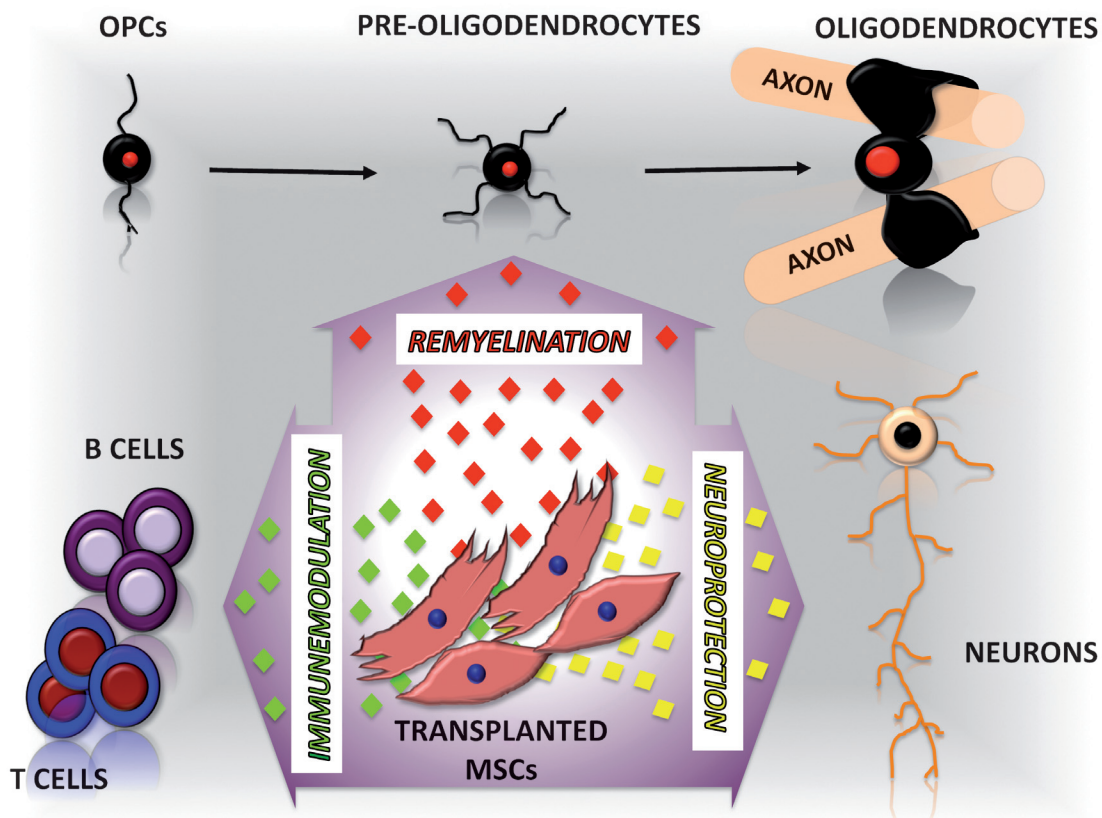
Summary of the main findings (X) in studies where functional recovery has been reported after MSC transplantation into EAE mice

MSCs Source	Administration Route	IM	NP	RM	References
Human bone marrow	Intravenous	X	X		(Zhang et al., 2005)
Mouse bone marrow	Intravenous	X	X		(Gerdoni et al., 2007)
Human bone marrow	Intravenous	X		X	(Bai et al., 2009)
Human bone marrow (neurotrophic factor-producing MSCs)	Intracerebroventricular	X	X		(Barhum et al., 2010)
Human bone marrow	Intraperitoneal				(Gordon et al., 2008)
Human bone marrow	Intravenous		X		(Gordon et al., 2010)
Mouse bone marrow	Intravenous, Intraventricular	X	X	X	(Kassis et al., 2008)
Human (CNTF-overexpressing MSCs)	Intravenous	X	X	X	(Lu et al., 2009)
Mouse bone marrow	Intraperitoneal				(Rafei et al., 2009a)
Mouse bone marrow	Intravenous	X	X		(Zappia et al., 2005)
Mouse bone marrow	Intravenous		X		(Zhang et al., 2009)
Human bone marrow	Intravenous		X		(Zhang et al., 2006)
Mouse bone marrow	Intraperitoneal	X			(Rafei et al., 2009b)

Abbreviations: Immunomodulation (IM), Neuroprotection (NP), Remyelination (RM)

damaged CNS and promote functional recovery. For instance, MSCs that were injected into the mouse lateral ventricle were later detected in the cerebellum, hippocampus molecular layer and olfactory bulb. Surprisingly, transplanted MSCs were found to express markers specific for astrocytes and neuronal lineage. Moreover, after MSCs were placed into a CNS trauma, stroke or Parkinson mouse model, transplanted cells were found to express mature astrocyte- or neuronal-specific markers (Kopen et al., 1999; Li et al., 2001; Li et al., 2000; Mahmood et al., 2001). Together this *in vivo* evidence supported a MSC transdifferentiation mechanism; however, follow-up studies revealed the possibility of fusion events between transplanted stem/progenitors cells with endogenous differentiated cells (Álvarez-Dolado et al., 2003; Kemp et al., 2010; Terada et al., 2002). This observation clearly indicates caution when interpreting results and claiming conclusions. MSC transdifferentiation has been tested under both *in vivo* and *in vitro* conditions. A number of studies have shown that the induction of neural genes in MSCs could be achieved through stimulation with non-physiological substances such as betamercaptoethanol, dimethylsulfoxide, hydroxyanisole and butylated hydroxytoluene, etc (Deng

et al., 2001; Munoz-Elias et al., 2003; Padovan et al., 2003; Rismanchi et al., 2003; Sánchez-Ramos et al., 2000; Woodbury et al., 2002; Woodbury et al., 2000). The criteria to assess MSC neural transdifferentiation properties of these compounds were based on the appearance of cells exhibiting a typical neural-like morphology and/or the expression of distinctive neural-specific genes. However, it has been observed that these non-physiological compounds induce a disruption of the actin cytoskeleton and may facilitate the outcome of neurite-resembling processes (Neuhuber et al., 2004). Moreover a study by Lu and coworkers demonstrated that morphological changes and increases in immunolabeling for certain neural markers upon “neural chemical induction” of MSCs are likely the result of cellular toxicity, cell shrinkage, and changes in the cytoskeleton and do not represent a true neural transdifferentiation phenomenon (Lu et al., 2004). Consequently, caution is recommended in the interpretation of results assessing the MSC neural transdifferentiation induced by non-physiological compounds. Therefore, to avoid misleading effects *in vitro* studies should focus on the investigation of physiological inductors for MSC neural differentiation. In this respect, we have shown that soluble



**Figure 1. Therapeutic activities of transplanted MSCs in MS.** Bone marrow-derived MSCs are accessible stromal multipotent cells that after transplantation display bystander therapeutic activities for MS treatment. It seems that mainly soluble factors (cytokines, growth factors, neurotrophins, etc) mediate the MSC-induced recovery in MS. Transplanted MSCs can home to and infiltrate the diseased CNS and lymph nodes. After transplantation, MSCs can modulate the immune system and inhibit encephalitogenic T and B cell activation (immunomodulatory activity (♦) in green). In addition, transplanted MSCs protect neurons and oligodendrocytes from cell death (neuroprotection activity (♦) in yellow). Finally, transplanted MSCs induce oligodendrocyte, stimulate endogenous OPCs differentiation and maturation that might enhance remyelination *in vivo* (remyelination activity (♦) in red). Therefore, MSC transplantation represents an attractive alternative to develop a novel therapeutic strategy for the treatment of MS. Abbreviations: Oligodendrocyte Progenitor Cells (OPCs), Mesenchymal Stem Cells (MSCs).

factors derived from adult hippocampus induce a neuronal-like phenotype in MSCs (Rivera et al., 2006a). However, differentiated MSCs did not display mature neuronal features. In conclusion, although some *in vivo* and *in vitro* studies indicate that MSCs might transdifferentiate into cells from the neural lineage, there is no convincing evidence and more studies are required to claim this conclusion.

Considering that MS is a CNS disease that mainly affects oligodendroglia, there is no substantial evidence showing that MSCs can transdifferentiate *in vivo* into mature remyelinating oligodendrocytes. In two different studies mouse and human-derived MSCs were systemically administrated into EAE mice. Although green fluorescent protein (GFP) labeled-MSCs were found in CNS demyelinating areas after intravenous infusion, no significant sign of MSC oligodendroglial transdifferentiation was observed (Gerdoni et al., 2007; Gordon et al., 2010). In summary, it is unlikely that neural transdifferentiation might be part of the transplanted MSC-derived repair mechanism in MS. Alternative mechanisms by which MSCs might enhance functional recovery in MS are mediated through bystander effects on the host immune system and CNS cells (Zhang et al., 2005). These activities involve CNS-homing, immunomodulation, neuroprotection and remyelination (Karussis et al., 2008).

### 5.2 Transplanted MSCs home into demyelinated CNS and exert immunomodulatory activity during MS

Interestingly, after systemic or intraperitoneal administration of GFP labeled MSCs, transplanted cells home and infiltrate into CNS demyelinated regions as well as into lymph nodes of EAE mice and promote functional recovery (Table I) (Gerdoni et al., 2007; Gordon et al., 2008; Gordon et al., 2010; Kassis et al., 2008; Zappia et al., 2005). These observations indicate that MSCs display CNS homing and immunomodulatory properties. The immunomodulatory effects of MSCs involve impairment of the maturation and function of dendritic cells (DCs) through the inhibition of molecules associated with antigen presentation and IL-12 release (Aggarwal and Pittenger, 2005). Additionally, MSCs inhibit the differentiation of monocytes into immature antigen-presenting myeloid DCs and modulate macrophage activity (Nemeth et al., 2009). The immunomodulatory effect of MSCs is not restricted to DCs and monocytes/macrophages, since they also influence B and T lymphocytes during MS. MSCs affect B cell proliferation and differentiation, promote T cell anergy and stimulate the production of regulatory T cells (Selmani et al., 2008; Uccelli et al., 2007; Uccelli et al., 2006). MSC-injected EAE mice display a reduction of CNS inflammatory infiltrates and a decrease in encephalitogenic T cell proliferation in lymph nodes with a subsequent reduction in demyelination (Kassis et al., 2008; Zappia et al., 2005). The MSC-derived inhibitory effect on encephalitogenic T cells has been also confirmed *in vitro* (Kassis et al., 2008; Zappia et al., 2005). Moreover, transplanted MSCs regulate the T cell phenotype and modulate the immune response in the EAE animal model (Bai et al., 2009; Liu et al., 2009; Rafei et al., 2009a; Rafei et al., 2009b). Intravenously injected MSCs inhibit Th1 and Th17 production with a concomitant increase in Th2 and anti-inflammatory cytokines, promoting functional recovery in EAE mice (Bai et al., 2009). Further studies have shown that transplanted MSCs inhibit the production of CD4 Th17 cells in a CCL-2-

dependent manner (Rafei et al., 2009a; Rafei et al., 2009b). Interestingly, it seems that the immunomodulatory effect of MSCs during MS is mainly mediated through their secretome properties. In a recent study where conditioned medium derived from MSCs (MSC-CM) was infused into EAE mice, a significant decrease in pro-inflammatory cytokine (IFN- $\gamma$ , IL-17, TNF- $\alpha$ , IL-2) expression together with a consequent increase in anti-inflammatory cytokine (IL-10, IL-14) expression has been observed (Bai et al., 2012). In this study, authors showed that at least partially, hepatocyte growth factor (HGF) signaling mediates these MSC-CM-induced changes in cytokine expression in EAE (Bai et al., 2012). Moreover, inhibition of HGF signaling decreased MSC-derived functional recovery in EAE. In summary, transplanted MSCs exert immunomodulatory activities by diverse mechanisms that might be involved in the functional recovery in MS (Figure 1).

### 5.3 Transplanted MSCs induce neuroprotection and enhance CNS remyelination during MS

The MSC-derived immunomodulatory activity is probably not sufficient to explain the functional recovery observed in EAE mice after MSCs transplantation. In a recent report, MSCs were transplanted into experimental autoimmune neuritis (EAN) mice, a non-MS autoimmune neuropathy. Contrary to EAE, although MSCs inhibited CD4+ T cell proliferation, transplanted cells failed to promote functional recovery in EAN (Sajic et al., 2012). This result suggests that the MSC-derived immunomodulatory activity is not sufficient to promote functional recovery in all autoimmune-based neuropathies, and therefore MSCs may exert other activities that provide better success in demyelinated diseases such as MS. Besides the immunomodulatory effects of MSCs, transplanted MSCs protect axons and oligodendrocytes from cell death. For instance, it has been shown that transplanted MSCs reduce axonal loss in EAE mice (Zhang et al., 2006). Moreover, transplanted MSCs decrease the cellular expression of proNGF and p75, reducing oligodendrocyte apoptosis and enhancing functional recovery in EAE model (Zhang et al., 2009). In addition to this, the neuroprotective effect of transplanted MSCs is endowed with a strong antioxidant effect in EAE (Lanza et al., 2009). In summary, transplanted MSCs enhance neuronal and oligodendroglial survival (Figure 1).

In addition to immunomodulatory and neuroprotective activities, MSCs display neuroreparative properties by affecting the fate of CNS endogenous progenitor cells. For example, it has been shown that transplanted MSCs enhanced endogenous oligodendrocyte differentiation and remyelination in EAE mice (Bai et al., 2009; Kassis et al., 2008; Lu et al., 2009). However, with this experimental setup (EAE model) is still not clear whether the MSC-derived regenerative effect is an indirect consequence of the MSC-mediated immunomodulation or whether MSCs could directly exert a bystander activity on endogenous progenitors. A recent study partially addressed this question by co-transplanting MSCs together with OPCs into the myelin deficient *shiverer* mouse strain (Cristofanilli et al., 2011). This study showed that MSCs enhanced OPC migration and maturation into oligodendrocytes promoting myelination in the corpus callosum. Consistent with this study, we have shown that *ex vivo* co-transplantation of MSCs together with NPCs onto hippocampal slice cultures (free of immune derived cells) induces NPCs to acquire an

oligodendrocytic phenotype, while NPCs transplanted alone generated mostly astrocytes (Rivera et al., 2009). Regarding the underlying mechanisms, we have studied the effects of MSCs on NPCs *in vitro* and demonstrated that soluble factors present in MSC-CM strongly activate oligodendrogenesis in postmitotic NPCs (Rivera et al., 2006b). First, we observed a strong increase in the number of GalC- and MBP-expressing cells in the MSC-CM treated cultures, indicating that MSC-CM promotes oligodendroglial differentiation and maturation. This was apparently at the expense of astrogenesis, since the number of GFAP-expressing cells was dramatically reduced. Moreover, we observed that MSC-CM augmented the expression of the pro-oligodendrogenic determinants *Olig1/2*, while it diminished the expression of *Id2*, a specific inhibitor of oligodendrogenesis. Therefore we suggested that MSC-CM not only promoted oligodendrocyte differentiation and maturation, but also induced oligodendrocyte fate decision, most likely through modulating the relative expression levels of *Oligs/Ids* (Rivera et al., 2006b). In agreement with this conclusion, we have recently published that MSC-CM primed or predisposed proliferating NPCs towards the oligodendrocyte lineage (Steffenhagen et al., 2011). Therefore, soluble factors derived from MSCs can activate NPC oligodendrogenesis at different progression stages. In the light of our findings, a recent report has shown in EAE mice that the MSCs derived oligodendrogenic and myelin repair activity or activities reside in soluble factors secreted by these cells (Bai et al., 2012). Thus, MSC-CM infusion into EAE mice enhanced oligodendrocyte development and remyelination. Hence the identification of the oligodendrogenic activity derived from MSCs becomes a priority to develop new remyelination therapies for MS treatment.

We performed a candidate approach in order to identify the MSC-derived oligodendrogenic activity. We have excluded a number of growth factors, cytokines and hormones as candidates for this activity: Insulin-like growth factor-1 (IGF-1), thyroid hormone (TH), fibroblast growth factor-2 (FGF-2), vascular endothelial growth factor (VEGF), interleukin-6 (IL-6), brain-derived neurotrophic factor (BDNF), nerve growth factor (NGF), transforming growth factor beta-1 (TGFbeta-1), neurotrophin-3 (NT-3), sonic hedgehog (Shh), PDGF-AA, UDP-glucose and noggin (Rivera et al., 2006b; Rivera et al., 2008). Even though ciliary neurotrophic factor (CNTF) is expressed by MSCs and promotes oligodendrocyte differentiation of adult NPCs, it did not decrease astroglial differentiation (Rivera et al., 2008). Therefore it seems that, in contrast to MSC-CM, CNTF does not induce a change in the fate of NPCs from astrocytes towards oligodendrocytes. In experiments using neutralizing antibodies we demonstrated that CNTF, although expressed by MSCs, is not involved in the pro-oligodendrogenic effect triggered by MSCs (Rivera et al., 2008). A recent study concluded that HGF mediates MSC-induced recovery in MS (Bai et al., 2012). In addition, these authors showed that HGF accelerated remyelination of lysolecithin-induced demyelinated spinal cord. Although HGF seems to represent an attractive candidate for the MSC-CM derived oligodendrogenic activity, it does not induce oligodendrogenesis in NPCs and no decrease in the proportion of oligodendrocytes generated has been observed after blocking HGF in MSC-CM (unpublished observations). The nature of the MSC-CM-derived oligodendrogenic activity remains unclear at present, but molecules other than proteins

might be considered. For example, recent studies demonstrated that MSCs secrete vesicles that contain miRNAs, which could exert effects on neighboring cells (Chen et al., 2010). In summary, MSCs might activate oligodendrogenesis and contribute to remyelination in MS, but this hypothesis requires further investigation (Figure 1).

## 6. CONCLUSION AND FINAL REMARKS

The CNS remyelination capacity is impaired during chronic MS, since neural progenitors are insufficiently recruited into the lesion site and fail to differentiate. Current MS treatments reduce the formation of inflammatory lesions within the CNS but do not enhance endogenous myelin repair. Therefore, in addition to immunomodulation, boosting endogenous oligodendrogenesis and remyelination through cell therapies is a highly attractive alternative, since it may cover several target mechanisms in one shot. Here, MSCs represent an attractive source to develop a cell therapy for MS. First, MSCs are accessible cells, easy to obtain and thus invasive techniques can be avoided. Second MSCs can be used in an autologous transplantation mode. Third, MSCs home into the demyelinated CNS and therefore systemic transplantation rather than invasive cell administration techniques could be used. Finally, MSCs exert stromal bystander immunomodulatory, neuroprotective and eventually remyelinating activities in the damaged CNS. Therefore, autologous MSC transplantation might be considered for developing novel therapeutic approaches for MS treatment (Figure 1).

## ACKNOWLEDGEMENTS

This work was supported by the European Union's Seventh Framework Programme (FP7/2007-2013) under grant agreements N° HEALTH-F2-2011-278850 (INMiND) and HEALTH-F2-2011-279288 (IDEA). In addition, the present work was supported by the Humboldt Stiftung (Georg Forster Program to F.J.R.) and by the state of Salzburg (to L.A.).

## REFERENCES

- AGGARWAL S, PITTENGER MF (2005) Human mesenchymal stem cells modulate allogeneic immune cell responses. *Blood* 105: 1815-22.
- AHLGREN SC, WALLACE H, BISHOP J, NEOPHYTOU C, RAFF MC (1997) Effects of Thyroid Hormone on Embryonic Oligodendrocyte Precursor Cell Development *in Vivo* and *in Vitro*. *Molecular and Cellular Neuroscience* 9: 420-432.
- ALLAMARGOT C, POUPLARD-BARTHELAIX A, FRESSINAUD C (2001) A single intracerebral microinjection of platelet-derived growth factor (PDGF) accelerates the rate of remyelination *in vivo*. *Brain Research* 918: 28-39.
- ALONSO A, HERNÁN MA (2008) Temporal trends in the incidence of multiple sclerosis: a systematic review. *Neurology* 71: 129-35.
- ALTMAN J (1969) Autoradiographic and histological studies of postnatal neurogenesis. IV. Cell proliferation and migration in the anterior forebrain, with special reference to persisting neurogenesis in the olfactory bulb. *J Comp Neurol*. 137: 433-57.
- ALTMAN J, DAS GD (1964) Autoradiographic Examination of the Effects of Enriched Environment on the Rate of Glial Multiplication in the Adult Rat Brain. *Nature* 204: 1161-3.
- ALTMAN J, DAS G (1965) Autoradiographic and histological evidence of postnatal hippocampal neurogenesis in rats. *J Comp Neurol*. 124: 319-35.
- ÁLVAREZ-BUYLLA A, GARCÍA-VERDUGO JM (2002) Neurogenesis in adult subventricular zone. *J Neurosci* 22: 629-34.
- ÁLVAREZ-DOLADO M, PARDAL R, GARCÍA-VERDUGO JM, FIKE JR, LEE HO, PFEFFER K, LOIS C, MORRISON SJ, ÁLVAREZ-BUYLLA A



- (2003) Fusion of bone-marrow-derived cells with Purkinje neurons, cardiomyocytes and hepatocytes. *Nature* 425: 968-73.
- ARNETT HA, FANCY SP, ALBERTA JA, ZHAO C, PLANT SR, KAING S, RAINE CS, ROWITCH DH, FRANKLIN RJ, STILES CD (2004) bHLH transcription factor Olig1 is required to repair demyelinated lesions in the CNS. *Science* 306: 2111-5.
- ARTAVANIS-TSAKONAS S, RAND MD, LAKE RJ (1999) Notch signaling: cell fate control and signal integration in development. *Science* 284: 770-6.
- ASCHERIO A, MUNGER KL, SIMON KC (2010) Vitamin D and multiple sclerosis. *Lancet Neurol* 9: 599-612.
- BAI L, LENNON DP, EATON V, MAIER K, CAPLAN AI, MILLER SD, MILLER RH (2009) Human bone marrow-derived mesenchymal stem cells induce Th2-polarized immune response and promote endogenous repair in animal models of multiple sclerosis. *Glia* 57: 1192-203.
- BAI L, LENNON DP, CAPLAN AI, DECHANT A, HECKER J, KRANSO J, ZAREMBA A, MILLER RH (2012) Hepatocyte growth factor mediates mesenchymal stem cell-induced recovery in multiple sclerosis models. *Nature neuroscience*.
- BARHUM Y, GAI-CASTRO S, BAHAT-STROMZA M, BARZILAY R, MELAMED E, OFFEN D (2010) Intracerebroventricular transplantation of human mesenchymal stem cells induced to secrete neurotrophic factors attenuates clinical symptoms in a mouse model of multiple sclerosis. *J Mol Neurosci* 41: 129-37.
- BARRES BA, LAZAR MA, RAFF MC (1994) A novel role for thyroid hormone, glucocorticoids and retinoic acid in timing oligodendrocyte development. *Development* 120: 1097-1108.
- BILLON N, TOKUMOTO Y, FORREST D, RAFF M (2001) Role of Thyroid Hormone Receptors in Timing Oligodendrocyte Differentiation. *Developmental Biology* 235: 110-120.
- BLAKEMORE WF (1972) Observations on oligodendrocyte degeneration, the resolution of status spongiosus and remyelination in cuprizone intoxication in mice. *J Neurocytol* 1: 413-26.
- BLAKEMORE WF (1973) Demyelination of the superior cerebellar peduncle in the mouse induced by cuprizone. *J Neurol Sci* 20: 63-72.
- BLAKEMORE WF (1974) Pattern of remyelination in the CNS. *Nature* 249: 577-8.
- BRUCE CC, ZHAO C, FRANKLIN RJ (2010) Remyelination - An effective means of neuroprotection. *Horm Behav* 57: 56-62.
- CALZA L, FERNÁNDEZ M, GIULIANI A, ALOE L, GIARDINO L (2002) Thyroid hormone activates oligodendrocyte precursors and increases a myelin-forming protein and NGF content in the spinal cord during experimental allergic encephalomyelitis. *Proceedings of the National Academy of Sciences of the United States of America* 99: 3258-3263.
- CALZÀ L, FERNÁNDEZ M, GIULIANI A, D'INTINO G, PIRONDI S, SIVILIA S, PARADISI M, DESORDI N, GIARDINO L (2005) Thyroid hormone and remyelination in adult central nervous system: a lesson from an inflammatory-demyelinating disease. *Brain Research Reviews* 48: 339-346.
- CARLETON A, PETREANU LT, LANSFORD R, ÁLVAREZ-BUYLLA A, LLEDO P-M (2003) Becoming a new neuron in the adult olfactory bulb. *Nat Neurosci* 6: 507-518.
- CHANG A, TOURTELLOTTE WW, RUDICK R, TRAPP BD (2002) Premyelinating oligodendrocytes in chronic lesions of multiple sclerosis. *N Engl J Med* 346: 165-73.
- CHEN TS, LAI RC, LEE MM, CHOO AB, LEE CN, LIM SK (2010) Mesenchymal stem cell secretes microparticles enriched in pre-microRNAs. *Nucleic Acids Res* 38: 215-24.
- CONNICK P, KOLAPPAN M, CRAWLEY C, WEBBER DJ, PATANI R, MICHELL AW, DU MQ, LUAN SL, ALTMANN DR, THOMPSON AJ, COMPSTON A, SCOTT MA, MILLER DH, CHANDRAN S (2012) Autologous mesenchymal stem cells for the treatment of secondary progressive multiple sclerosis: an open-label phase 2a proof-of-concept study. *Lancet neurology* 11: 150-6.
- CRISTOFANILLI M, HARRIS VK, ZIGELBAUM A, GOOSSENS AM, LU A, ROSENTHAL H, SADIQ SA (2011) Mesenchymal stem cells enhance the engraftment and myelinating ability of allogeneic oligodendrocyte progenitors in dysmyelinated mice. *Stem cells and development* 20: 2065-76.
- CROCKETT DP, BURSHTEYN M, GARCIA C, MUGGIRONI M, CASACCIA-BONNEFIL P (2005) Number of oligodendrocyte progenitors recruited to the lesioned spinal cord is modulated by the levels of the cell cycle regulatory protein p27Kip-1. *Glia* 49: 301-8.
- DA SILVA MEIRELLES L, CHAGASTELLES PC, NARDI NB (2006) Mesenchymal stem cells reside in virtually all post-natal organs and tissues. *J Cell Sci* 119: 2204-13.
- DAWSON MR, LEVINE JM, REYNOLDS R (2000) NG2-expressing cells in the central nervous system: are they oligodendroglial progenitors? *J Neurosci Res* 61: 471-9.
- DE CASTRO F, BRIBIAN A (2005) The molecular orchestra of the migration of oligodendrocyte precursors during development. *Brain Res Brain Res Rev* 49: 227-41.
- DE JAGER PL, BAECHER-ALLAN C, MAIER LM, ARTHUR AT, OTTOBONI L, BARCELLOS L, MCCAULEY JL, SAWCER S, GORIS A, SAARELA J, YELENSKY R, PRICE A, LEPPA V, PATTERSON N, DE BAKKER PI, TRAN D, AUBIN C, POBYWAJLO S, ROSSIN E, HU X, ASHLEY CW, CHOY E, RIOUX JD, PERICAK-VANCE MA, IVINSON A, BOOTH DR, STEWART GJ, PALOTIE A, PELTONEN L, DUBOIS B, HAINES JL, WEINER HL, COMPSTON A, HAUSER SL, DALY MJ, REICH D, OKSENBERG JR, HAFLE DA (2009) The role of the CD58 locus in multiple sclerosis. *Proc Natl Acad Sci U S A* 106: 5264-9.
- DENG W, OBROCKA M, FISCHER I, PROCKOP DJ (2001) In vitro differentiation of human marrow stromal cells into early progenitors of neural cells by conditions that increase intracellular cyclic AMP. *Biochem Biophys Res Commun* 282: 148-52.
- DEZAWA M, TAKAHASHI I, ESAKI M, TAKANO M, SAWADA H (2001) Sciatic nerve regeneration in rats induced by transplantation of in vitro differentiated bone-marrow stromal cells. *Eur J Neurosci* 14: 1771-6.
- DOETSCH F, SCHARFF C (2001) Challenges for Brain Repair: Insights from Adult Neurogenesis in Birds and Mammals. *Brain, Behavior and Evolution* 58: 306-322.
- DUSART I, MARTY S, PESCHANSKI M (1992) Demyelination, and remyelination by Schwann cells and oligodendrocytes after kainate-induced neuronal depletion in the central nervous system. *Neuroscience* 51: 137-48.
- EBERS GC, SADOVNICK AD (1993) The geographic distribution of multiple sclerosis: a review. *Neuroepidemiology* 12: 1-5.
- EBERS GC, SADOVNICK AD (1994) The role of genetic factors in multiple sclerosis susceptibility. *J Neuroimmunol* 54: 1-17.
- FANCY SP, ZHAO C, FRANKLIN RJ (2004) Increased expression of Nkx2.2 and Olig2 identifies reactive oligodendrocyte progenitor cells responding to demyelination in the adult CNS. *Mol Cell Neurosci* 27: 247-54.
- FANCY SP, BARANZINI SE, ZHAO C, YUK DI, IRVINE KA, KAING S, SANAI N, FRANKLIN RJ, ROWITCH DH (2009) Dysregulation of the Wnt pathway inhibits timely myelination and remyelination in the mammalian CNS. *Genes Dev* 23: 1571-85.
- FANCY SP, HARRINGTON EP, YUEN TJ, SILBEREIS JC, ZHAO C, BARANZINI SE, BRUCE CC, OTERO JJ, HUANG EJ, NUSSE R, FRANKLIN RJ, ROWITCH DH (2011) Axin2 as regulatory and therapeutic target in newborn brain injury and remyelination. *Nat Neurosci* 14: 1009-16.
- FELTS PA, WOOLSTON AM, FERNANDO HB, ASQUITH S, GREGSON NA, MIZZI OJ, SMITH KJ (2005) Inflammation and primary demyelination induced by the intraspinal injection of lipopolysaccharide. *Brain* 128: 1649-66.
- FRANCO PG, SILVESTROFF L, SOTO EF, PASQUINI JM (2008) Thyroid hormones promote differentiation of oligodendrocyte progenitor cells and improve remyelination after cuprizone-induced demyelination. *Experimental Neurology* 212: 458-467.
- FRANKLIN RJ (2002) Why does remyelination fail in multiple sclerosis? *Nat Rev Neurosci* 3: 705-14.
- FRANKLIN RJ, HINKS GL (1999) Understanding CNS remyelination: clues from developmental and regeneration biology. *J Neurosci Res* 58: 207-13.
- FRANKLIN RJ, FFRENCH-CONSTANT C (2008) Remyelination in the CNS: from biology to therapy. *Nat Rev Neurosci* 9: 839-55.
- FRANKLIN RJ, KOTTER MR (2008) The biology of CNS remyelination: the key to therapeutic advances. *J Neurol* 255 Suppl 1: 19-25.
- FREEDMAN MS, BAR-OR A, ATKINS HL, KARUSSIS D, FRASSONI F, LAZARUS H, SCOLDING N, SLAVIN S, LE BLANC K, UCCELLI A (2010) The therapeutic potential of mesenchymal stem cell transplantation as a treatment for multiple sclerosis: consensus report of the International MSCT Study Group. *Mult Scler* 16: 503-10.
- FUGGER L, FRIESE MA, BELL JI (2009) From genes to function: the next challenge to understanding multiple sclerosis. *Nat Rev Immunol* 9: 408-17.
- FULLER ML, DECHANT AK, ROTHSTEIN B, CAPRARIELLO A, WANG R, HALL AK, MILLER RH (2007) Bone morphogenetic proteins promote gliosis in demyelinating spinal cord lesions. *Ann Neurol* 62: 288-300.
- GAGE FH (2000) Mammalian Neural Stem Cells. *Science* 287: 1433-1438.
- GENSERT JM, GOLDMAN JE (1997) Endogenous progenitors remyelinate demyelinated axons in the adult CNS. *Neuron* 19: 197-203.

- GERDONI E, GALLO B, CASAZZA S, MUSIO S, BONANNI I, PEDEMONTE E, MANTEGAZZA R, FRASSONI F, MANCARDI G, PEDOTTI R, UCCELLI A (2007) Mesenchymal stem cells effectively modulate pathogenic immune response in experimental autoimmune encephalomyelitis. *Ann Neurol* 61: 219-27.
- GIVOGRI MI, COSTA RM, SCHONMANN V, SILVA AJ, CAMPAGNONI AT, BONGARZONE ER (2002) Central nervous system myelination in mice with deficient expression of Notch1 receptor. *J Neurosci Res* 67: 309-20.
- GONZÁLEZ-PÉREZ O, ROMERO-RODRÍGUEZ R, SORIANO-NAVARRO M, GARCÍA-VERDUGO JM, ÁLVAREZ-BUYLLA A (2009) Epidermal growth factor induces the progeny of subventricular zone type B cells to migrate and differentiate into oligodendrocytes. *Stem Cells* 27: 2032-43.
- GORDON D, PAVLOVSKA G, UNEY JB, WRAITH DC, SCOLDING NJ (2010) Human Mesenchymal Stem Cells Infiltrate the Spinal Cord, Reduce Demyelination, and Localize to White Matter Lesions in Experimental Autoimmune Encephalomyelitis. *J Neuropathol Exp Neurol*.
- GORDON D, PAVLOVSKA G, GLOVER CP, UNEY JB, WRAITH D, SCOLDING NJ (2008) Human mesenchymal stem cells abrogate experimental allergic encephalomyelitis after intraperitoneal injection, and with sparse CNS infiltration. *Neurosci Lett* 448: 71-3.
- GRIGORIADIS N, LOURBOPOULOS A, LAGOUDAKI R, FRISCHER JM, POLYZOIDOU E, TOULOUMI O, SIMEONIDOU C, DERETZI G, KOUNTOURAS J, SPANDOU E, KOTTA K, KARKAVELAS G, TASCOS N, LASSMANN H (2011) Variable behavior and complications of autologous bone marrow mesenchymal stem cells transplanted in experimental autoimmune encephalomyelitis. *Experimental neurology* 230: 78-89.
- HEDSTROM AK, BAARNHJELM M, OLSSON T, ALFREDSSON L (2009) Tobacco smoking, but not Swedish snuff use, increases the risk of multiple sclerosis. *Neurology* 73: 696-701.
- HEINEN A, KREMER D, GÖTTLE P, KRUSE F, HASSE B, LEHMANN H, HARTUNG HP, KURY P (2008) The cyclin-dependent kinase inhibitor p57kip2 is a negative regulator of Schwann cell differentiation and in vitro myelination. *Proc Natl Acad Sci U S A* 105: 8748-53.
- HOFSTETTER CP, SCHWARZ EJ, HESS D, WIDENFALK J, EL MANIRA A, PROCKOP DJ, OLSON L (2002) Marrow stromal cells form guiding strands in the injured spinal cord and promote recovery. *Proc Natl Acad Sci U S A* 99: 2199-204.
- JABLONSKA B, AGUIRRE A, RAYMOND M, SZABO G, KITABATAKE Y, SAILOR KA, MING GL, SONG H, GALLO V (2010) Chordin-induced lineage plasticity of adult SVZ neuroblasts after demyelination. *Nat Neurosci* 13: 541-50.
- JACKSON EL, GARCÍA-VERDUGO JM, GIL-PEROTIN S, ROY M, QUINONES-HINOJOSA A, VANDENBERG S, ÁLVAREZ-BUYLLA A (2006) PDGFR[alpha]-Positive B Cells Are Neural Stem Cells in the Adult SVZ that Form Glioma-like Growths in Response to Increased PDGF Signaling. *Neuron* 51: 187-199.
- JADASZ JJ, RIVERA FJ, TAUBERT A, KANDASAMY M, SANDNER B, WEIDNER N, AKTAS O, HARTUNG HP, AIGNER L, KURY P (2012) p57kip2 regulates glial fate decision in adult neural stem cells. *Development* 139: 3306-15.
- JARRIAULT S, LE BAIL O, HIRSINGER E, POURQUIE O, LOGEAT F, STRONG CF, BROU C, SEIDAH NG, ISRA L A (1998) Delta-1 activation of notch-1 signaling results in HES-1 transactivation. *Mol Cell Biol* 18: 7423-31.
- JESSEN KR, MIRSKY R (2008) Negative regulation of myelination: relevance for development, injury, and demyelinating disease. *Glia* 56: 1552-65.
- KABAT EA, WOLF A, BEZER AE, MURRAY JP (1951) Studies on acute disseminated encephalomyelitis produced experimentally in rhesus monkeys. *J Exp Med* 93: 615-33.
- KAGEYAMA R, OHTSUKA T (1999) The Notch-Hes pathway in mammalian neural development. *Cell Res* 9: 179-88.
- KAGEYAMA R, OHTSUKA T, HATAKEYAMA J, OHSAWA R (2005) Roles of bHLH genes in neural stem cell differentiation. *Exp Cell Res* 306: 343-8.
- KARUSSIS D, KASSIS I, KURKALLI BG, SLAVIN S (2008) Immunomodulation and neuroprotection with mesenchymal bone marrow stem cells (MSCs): a proposed treatment for multiple sclerosis and other neuroimmunological/neurodegenerative diseases. *J Neurol Sci* 265: 131-5.
- KASSIS I, GRIGORIADIS N, GOWDA-KURKALLI B, MIZRACHI-KOL R, BEN-HUR T, SLAVIN S, ABRAMSKY O, KARUSSIS D (2008) Neuroprotection and immunomodulation with mesenchymal stem cells in chronic experimental autoimmune encephalomyelitis. *Arch Neurol* 65: 753-61.
- KEIRSTEAD HS, LEVINE JM, BLAKEMORE WF (1998) Response of the oligodendrocyte progenitor cell population (defined by NG2 labelling) to demyelination of the adult spinal cord. *Glia* 22: 161-70.
- KEMP K, GORDON D, WRAITH DC, MALLAM E, HARTFIELD E, UNEY J, WILKINS A, SCOLDING N (2010) Fusion between human mesenchymal stem cells and rodent cerebellar Purkinje cells. *Neuropathol Appl Neurobiol*.
- KESTERSON JW, CARLTON WW (1971) Histopathologic and enzyme histochemical observations of the cuprizone-induced brain edema. *Exp Mol Pathol* 15: 82-96.
- KOMOLY S, JEYASINGHAM MD, PRATT OE, LANTOS PL (1987) Decrease in oligodendrocyte carbonic anhydrase activity preceding myelin degeneration in cuprizone induced demyelination. *J Neurol Sci* 79: 141-8.
- KOPEN GC, PROCKOP DJ, PHINNEY DG (1999) Marrow stromal cells migrate throughout forebrain and cerebellum, and they differentiate into astrocytes after injection into neonatal mouse brains. *Proc Natl Acad Sci U S A* 96: 10711-6.
- KOPER J, HOEBEN R, HOCHSTENBACH F, VAN GOLDE L, LOPES-CARDOZO M (1986) Effects of triiodothyronine on the synthesis of sulfolipids by oligodendrocyte-enriched glial cultures. *Biochim Biophys Acta*. 887: 327-34.
- KORNEK B, LASSMANN H (2003) Neuropathology of multiple sclerosis—new concepts. *Brain Res Bull* 61: 321-6.
- KREMER D, HEINEN A, JADASZ J, GÖTTLE P, ZIMMERMANN K, ZICKLER P, JANDER S, HARTUNG H-P, KÜRY P (2009) p57kip2 is dynamically regulated in experimental autoimmune encephalomyelitis and interferes with oligodendroglial maturation. *Proceedings of the National Academy of Sciences* 106: 9087-9092.
- KUCHROO VK, ANDERSON AC, WALDNER H, MUNDER M, BETTELLI E, NICHOLSON LB (2002) T cell response in experimental autoimmune encephalomyelitis (EAE): role of self and cross-reactive antigens in shaping, tuning, and regulating the autopathogenic T cell repertoire. *Annu Rev Immunol* 20: 101-23.
- KUHLMANN T, MIRON V, CUO Q, WEGNER C, ANTEL J, BRUCK W (2008) Differentiation block of oligodendroglial progenitor cells as a cause for remyelination failure in chronic multiple sclerosis. *Brain* 131: 1749-58.
- LANZA C, MORANDO S, VOCI A, CANESI L, PRINCIPATO MC, SERPERO LD, MANCARDI G, UCCELLI A, VERGANI L (2009) Neuroprotective mesenchymal stem cells are endowed with a potent antioxidant effect in vivo. *J Neurochem* 110: 1674-84.
- LARSEN PH, WELLS JE, STALLCUP WB, OPDENAKKER G, YONG VW (2003) Matrix metalloproteinase-9 facilitates remyelination in part by processing the inhibitory NG2 proteoglycan. *J Neurosci* 23: 11127-35.
- LASSMANN H (1998) Neuropathology in multiple sclerosis: new concepts. *Mult Scler* 4: 93-8.
- LASSMANN H (1999) Mechanisms of demyelination and tissue damage in multiple sclerosis. *Acta Neurol Belg* 99: 6-10.
- LASSMANN H (2007a) Experimental models of multiple sclerosis. *Rev Neurol (Paris)* 163: 651-5.
- LASSMANN H (2007b) Multiple sclerosis: is there neurodegeneration independent from inflammation? *J Neurol Sci* 259: 3-6.
- LASSMANN H, BRUCK W, LUCCHINETTI CF (2007) The immunopathology of multiple sclerosis: an overview. *Brain Pathol* 17: 210-8.
- LASSMANN H, BRUCK W, LUCCHINETTI C, RODRÍGUEZ M (1997) Remyelination in multiple sclerosis. *Mult Scler* 3: 133-6.
- LEVINE JM, REYNOLDS R (1999) Activation and proliferation of endogenous oligodendrocyte precursor cells during ethidium bromide-induced demyelination. *Exp Neurol* 160: 333-47.
- LEVINE JM, REYNOLDS R, FAWCETT JW (2001) The oligodendrocyte precursor cell in health and disease. *Trends Neurosci* 24: 39-47.
- LI Y, CHEN J, WANG L, ZHANG L, LU M, CHOPP M (2001) Intracerebral transplantation of bone marrow stromal cells in a 1-methyl-4-phenyl-1,2,3,6-tetrahydropyridine mouse model of Parkinson's disease. *Neurosci Lett* 316: 67-70.
- LI Y, CHOPP M, CHEN J, WANG L, GAUTAM SC, XU YX, ZHANG Z (2000) Intrastriatal transplantation of bone marrow nonhematopoietic cells improves functional recovery after stroke in adult mice. *J Cereb Blood Flow Metab* 20: 1311-9.
- LIU XJ, ZHANG JF, SUN B, PENG HS, KONG QF, BAI SS, LIU YM, WANG GY, WANG JH, LI HL (2009) Reciprocal effect of mesenchymal stem cell on experimental autoimmune encephalomyelitis is mediated by transforming growth factor-beta and interleukin-6. *Clin Exp Immunol* 158: 37-44.

- LIU Y, RAO MS (2004) Glial progenitors in the CNS and possible lineage relationships among them. *Biol Cell* 96: 279-90.
- LOIS C, GARCÍA-VERDUGO JM, ÁLVAREZ-BUYLLA A (1996) Chain migration of neuronal precursors. *Science* 271: 978-81.
- LU P, BLESCH A, TUSZYNSKI MH (2004) Induction of bone marrow stromal cells to neurons: differentiation, transdifferentiation, or artifact? *J Neurosci Res* 77: 174-91.
- LU P, JONES LL, TUSZYNSKI MH (2005) BDNF-expressing marrow stromal cells support extensive axonal growth at sites of spinal cord injury. *Exp Neurol* 191: 344-60.
- LU Z, HU X, ZHU C, WANG D, ZHENG X, LIU Q (2009) Overexpression of CNTF in Mesenchymal Stem Cells reduces demyelination and induces clinical recovery in experimental autoimmune encephalomyelitis mice. *J Neuroimmunol* 206: 58-69.
- LUBLIN FD, REINGOLD SC (1996) Defining the clinical course of multiple sclerosis: results of an international survey. National Multiple Sclerosis Society (USA) Advisory Committee on Clinical Trials of New Agents in Multiple Sclerosis. *Neurology* 46: 907-11.
- LUDWIN SK (1978) Central nervous system demyelination and remyelination in the mouse: an ultrastructural study of cuprizone toxicity. *Lab Invest* 39: 597-612.
- LUDWIN SK, MAITLAND M (1984) Long-term remyelination fails to reconstitute normal thickness of central myelin sheaths. *J Neurol Sci* 64: 193-8.
- MAHMOOD A, LU D, WANG L, LI Y, LU M, CHOPP M (2001) Treatment of traumatic brain injury in female rats with intravenous administration of bone marrow stromal cells. *Neurosurgery* 49: 1196-203; discussion 1203-4.
- MARTINO G, FRANKLIN RJ, VAN EVERCOOREN AB, KERR DA (2010) Stem cell transplantation in multiple sclerosis: current status and future prospects. *Nat Rev Neurol* 6: 247-55.
- MATSUSHIMA GK, MORELL P (2001) The neurotoxicant, cuprizone, as a model to study demyelination and remyelination in the central nervous system. *Brain Pathol* 11: 107-16.
- MENN B, GARCÍA-VERDUGO JM, YASCHINE C, GONZÁLEZ-PÉREZ O, ROWITCH D, ÁLVAREZ-BUYLLA A (2006) Origin of oligodendrocytes in the subventricular zone of the adult brain. *J Neurosci* 26: 7907-18.
- MILLER RH (2002) Regulation of oligodendrocyte development in the vertebrate CNS. *Prog Neurobiol* 67: 451-67.
- MINGUELL JJ, ERICES A, CONGET P (2001) Mesenchymal stem cells. *Exp Biol Med* (Maywood) 226: 507-20.
- MUNOZ-ELÍAS G, WOODBURY D, BLACK IB (2003) Marrow stromal cells, mitosis, and neuronal differentiation: stem cell and precursor functions. *Stem Cells* 21: 437-48.
- MURTI JC, ZHOU YX, LE TQ, VANA AC, ARMSTRONG RC (2005) PDGF and FGF2 pathways regulate distinct oligodendrocyte lineage responses in experimental demyelination with spontaneous remyelination. *Neurobiol Dis* 19: 171-82.
- NAIT-OUMESMAR B, DECKER L, LACHAPPELLE F, AVELLANA-ADALID V, BACHELIN C, VAN EVERCOOREN AB (1999) Progenitor cells of the adult mouse subventricular zone proliferate, migrate and differentiate into oligodendrocytes after demyelination. *Eur J Neurosci* 11: 4357-66.
- NAIT-OUMESMAR B, PICARD-RIERA N, KERNINON C, DECKER L, SEILHEAN D, HONGLINGER GU, HIRSCH EC, REYNOLDS R, BARON-VAN EVERCOOREN A (2007) Activation of the subventricular zone in multiple sclerosis: evidence for early glial progenitors. *Proc Natl Acad Sci U S A* 104: 4694-9.
- NEMETH K, LEELAHAVANICHKUL A, YUEN PS, MAYER B, PARMELEE A, DOI K, ROBEY PG, LEELAHAVANICHKUL K, KOLLER BH, BROWN JM, HU X, JELINEK I, STAR RA, MEZEY E (2009) Bone marrow stromal cells attenuate sepsis via prostaglandin E(2)-dependent reprogramming of host macrophages to increase their interleukin-10 production. *Nat Med* 15: 42-9.
- NEUHUBER B, TIMOTHY HIMES B, SHUMSKY JS, GALLO G, FISCHER I (2005) Axon growth and recovery of function supported by human bone marrow stromal cells in the injured spinal cord exhibit donor variations. *Brain Res* 1035: 73-85.
- NEUHUBER B, GALLO G, HOWARD L, KOSTURA L, MACKAY A, FISCHER I (2004) Reevaluation of in vitro differentiation protocols for bone marrow stromal cells: disruption of actin cytoskeleton induces rapid morphological changes and mimics neuronal phenotype. *J Neurosci Res* 77: 192-204.
- NIEHAUS A, SHI J, GRZENKOWSKI M, DIERS-FENGER M, ARCHELOS J, HARTUNG HP, TOYKA K, BRUCK W, TROTTER J (2000) Patients with active relapsing-remitting multiple sclerosis synthesize antibodies recognizing oligodendrocyte progenitor cell surface protein: implications for remyelination. *Ann Neurol* 48: 362-71.
- NOSEWORTHY JH, LUCCHINETTI C, RODRÍGUEZ M, WEINSHENKER BG (2000) Multiple sclerosis. *N Engl J Med* 343: 938-52.
- OHTSUKA T, SAKAMOTO M, GUILLEMOT F, KAGEYAMA R (2001) Roles of the basic helix-loop-helix genes *Hes1* and *Hes5* in expansion of neural stem cells of the developing brain. *J Biol Chem* 276: 30467-74.
- OLAH M, AMOR S, BROUWER N, VINET J, EGGEN B, BIBER K, BODDEKE HW (2012) Identification of a microglia phenotype supportive of remyelination. *Glia* 60: 306-21.
- ORTON SM, HERRERA BM, YEE IM, VALDAR W, RAMAGOPALAN SV, SADOVNIK AD, EBERS GC (2006) Sex ratio of multiple sclerosis in Canada: a longitudinal study. *Lancet Neurol* 5: 932-6.
- PADOVAN CS, JAHN K, BIRNBAUM T, REICH P, SOSTAK P, STRUPP M, STRAUBE A (2003) Expression of neuronal markers in differentiated marrow stromal cells and CD133+ stem-like cells. *Cell Transplant* 12: 839-48.
- PICARD-RIERA N, DECKER L, DELARASSE C, GOUDE K, NAIT-OUMESMAR B, LIBLAU R, PHAM-DINH D, EVERCOOREN AB (2002) Experimental autoimmune encephalomyelitis mobilizes neural progenitors from the subventricular zone to undergo oligodendrogenesis in adult mice. *Proc Natl Acad Sci U S A* 99: 13211-6.
- RAFEI M, BIRMAN E, FORNER K, GALIPEAU J (2009a) Allogeneic mesenchymal stem cells for treatment of experimental autoimmune encephalomyelitis. *Mol Ther* 17: 1799-803.
- RAFEI M, CAMPEAU PM, AGUILAR-MAHECHA A, BUCHANAN M, WILLIAMS P, BIRMAN E, YUAN S, YOUNG YK, BOIVIN MN, FORNER K, BASIK M, GALIPEAU J (2009b) Mesenchymal stromal cells ameliorate experimental autoimmune encephalomyelitis by inhibiting CD4 Th17 T cells in a CC chemokine ligand 2-dependent manner. *J Immunol* 182: 5994-6002.
- RAFF MC, MILLER RH, NOBLE M (1983) A glial progenitor cell that develops in vitro into an astrocyte or an oligodendrocyte depending on culture medium. *Nature* 303: 390-6.
- RAFF MC, WILLIAMS BPA, MILLER RH (1984) The in vitro differentiation of a bipotential glial progenitor cell. *EMBO J* 3: 1857-1864.
- RAFF MC, LILLIEN LE, RICHARDSON WD, BURNE JF, NOBLE MD (1988) Platelet-derived growth factor from astrocytes drives the clock that times oligodendrocyte development in culture. *Nature* 333: 562 - 565.
- RAMAGOPALAN SV, DOBSON R, MEIER UC, GIOVANNONI G (2010) Multiple sclerosis: risk factors, prodromes, and potential causal pathways. *Lancet Neurol* 9: 727-39.
- REDWINE JM, ARMSTRONG RC (1998) In vivo proliferation of oligodendrocyte progenitors expressing PDGFalphaR during early remyelination. *J Neurobiol* 37: 413-28.
- REYNOLDS R, DAWSON M, PAPADOPOULOS D, POLITO A, DI BELLO IC, PHAM-DINH D, LEVINE J (2002) The response of NG2-expressing oligodendrocyte progenitors to demyelination in MOG-EAE and MS. *J Neurocytol* 31: 523-36.
- RISMANCHI N, FLOYD CL, BERMAN RF, LYETH BG (2003) Cell death and long-term maintenance of neuron-like state after differentiation of rat bone marrow stromal cells: a comparison of protocols. *Brain Res* 991: 46-55.
- RIVERA FJ, SIERRALTA WD, MINGUELL JJ, AIGNER L (2006a) Adult hippocampus derived soluble factors induce a neuronal-like phenotype in mesenchymal stem cells. *Neurosci Lett* 406: 49-54.
- RIVERA FJ, COUILLARD-DESPRES S, PEDRE X, PLOETZ S, CAIONI M, LOIS C, BOGDAHN U, AIGNER L (2006b) Mesenchymal Stem Cells Instruct Oligodendrogenic Fate Decision on Adult Neural Stem Cells. *STEM CELLS* 24: 2209-2219.
- RIVERA FJ, KANDASAMY M, COUILLARD-DESPRES S, CAIONI M, SÁNCHEZ R, HUBER C, WEIDNER N, BOGDAHN U, AIGNER L (2008) Oligodendrogenesis of Adult Neural Progenitors: Differential Effects of Ciliary Neurotrophic Factor and Mesenchymal Stem Cell Derived Factors. *J Neurochem*.
- RIVERA FJ, STEFFENHAGEN C, KREMER D, KANDASAMY M, SANDNER B, COUILLARD-DESPRES S, WEIDNER N, KURY P, AIGNER L (2010) Deciphering the oligodendrogenic program of neural progenitors: cell intrinsic and extrinsic regulators. *Stem Cells Dev* 19: 595-606.
- RIVERA FJ, SIEBZEHRUBL FA, KANDASAMY M, COUILLARD-DESPRES S, CAIONI M, POEHLER AM, BERNINGER B, SANDNER B, BOGDAHN U, GOETZ M, BLUEMCKE I, WEIDNER N, AIGNER L (2009) Mesenchymal stem cells promote oligodendroglial differentiation in hippocampal slice cultures. *Cell Physiol Biochem* 24: 317-24.

- RIVERS TM, SPRUNT DH, BERRY GP (1933) Observations on Attempts to Produce Acute Disseminated Encephalomyelitis in Monkeys. *J Exp Med* 58: 39-53.
- RODRÍGUEZ M (2007) Effectors of demyelination and remyelination in the CNS: implications for multiple sclerosis. *Brain Pathol* 17: 219-29.
- RODRÍGUEZ-PEÑA A (1999) Oligodendrocyte development and thyroid hormone. *J Neurobiol.* 40: 497-512.
- SADOVNICK AD, EBERS GC (1993) Epidemiology of multiple sclerosis: a critical overview. *Can J Neurol Sci* 20: 17-29.
- SADOVNICK AD, EBERS GC, DYMENT DA, RISCH NJ (1996) Evidence for genetic basis of multiple sclerosis. The Canadian Collaborative Study Group. *Lancet* 347: 1728-30.
- SAJIC M, HUNT DP, LEE W, COMPSTON DA, SCHWEIMER JV, GREGSON NA, CHANDRAN S, SMITH KJ (2012) Mesenchymal stem cells lack efficacy in the treatment of experimental autoimmune neuritis despite in vitro inhibition of T-cell proliferation. *PLoS one* 7: e30708.
- SAMANTA J, KESSLER JA (2004) Interactions between ID and OLIG proteins mediate the inhibitory effects of BMP4 on oligodendroglial differentiation. *Development* 131: 4131-42.
- SÁNCHEZ-RAMOS J, SONG S, CARDOZO-PELÁEZ F, HAZZI C, STEDEFORD T, WILLING A, FREEMAN TB, SAPORTA S, JANSSEN W, PATEL N, COOPER DR, SANBERG PR (2000) Adult bone marrow stromal cells differentiate into neural cells in vitro. *Exp Neurol* 164: 247-56.
- SCHONROCK LM, KUHLMANN T, ADLER S, BITSCH A, BRUCK W (1998) Identification of glial cell proliferation in early multiple sclerosis lesions. *Neuropathol Appl Neurobiol* 24: 320-30.
- SELMANI Z, NAJI A, ZIDI I, FAVIER B, GAFFIE E, OBERT L, BORG C, SAAS P, TIBERGHIE N, ROUAS-FREISS N, CAROSELLA ED, DESCHASEAUX F (2008) Human leukocyte antigen-G5 secretion by human mesenchymal stem cells is required to suppress T lymphocyte and natural killer function and to induce CD4+CD25highFOXP3+ regulatory T cells. *Stem Cells* 26: 212-22.
- SETOGUCHI T, YONE K, MATSUOKA E, TAKENOUCHE H, NAKASHIMA K, SAKOU T, KOMIYA S, IZUMO S (2001) Traumatic injury-induced BMP7 expression in the adult rat spinal cord. *Brain Res* 921: 219-25.
- SHIMIZU T, KAGAWA T, WADA T, MUROYAMA Y, TAKADA S, IKENAKA K (2005) Wnt signaling controls the timing of oligodendrocyte development in the spinal cord. *Dev Biol* 282: 397-410.
- SIFFRIN V, VOGT J, RADBRUCH H, NITSCH R, ZIPP F (2010) Multiple sclerosis - candidate mechanisms underlying CNS atrophy. *Trends Neurosci* 33: 202-10.
- SILVESTROFF L, BARTUCCI S, SOTO E, GALLO V, PASQUINI J, FRANCO P (2010) Cuprizone-induced demyelination in CNP::GFP transgenic mice. *J Comp Neurol* 518: 2261-83.
- SIM FJ, ZHAO C, PENDERIS J, FRANKLIN RJ (2002) The age-related decrease in CNS remyelination efficiency is attributable to an impairment of both oligodendrocyte progenitor recruitment and differentiation. *J Neurosci* 22: 2451-9.
- SKRIPULETZ T, LINDNER M, KOTSIARI A, GARDE N, FOKUHL J, LINSMEIER F, TREBST C, STANGEL M (2008) Cortical demyelination is prominent in the murine cuprizone model and is strain-dependent. *Am J Pathol* 172: 1053-61.
- SMITH KJ, MCDONALD WI, BLAKEMORE WF (1979) Restoration of secure conduction by central demyelination. *Trans Am Neurol Assoc* 104: 25-9.
- SOSPEDRA M, MARTIN R (2005) Antigen-specific therapies in multiple sclerosis. *Int Rev Immunol* 24: 393-413.
- STEFFENHAGEN C, DECHANT FX, OBERBAUER E, FURTNER T, WEIDNER N, KURY P, AIGNER L, RIVERA FJ (2011) Mesenchymal Stem Cells Prime Proliferating Adult Neural Progenitors Toward an Oligodendrocyte Fate. *Stem cells and development.*
- SVEJGAARD A (2008) The immunogenetics of multiple sclerosis. *Immunogenetics* 60: 275-86.
- TANIGAKI K, NOGAKI F, TAKAHASHI J, TASHIRO K, KUROOKA H, HONJO T (2001) Notch1 and Notch3 instructively restrict bFGF-responsive multipotent neural progenitor cells to an astroglial fate. *Neuron* 29: 45-55.
- TERADA N, HAMAZAKI T, OKA M, HOKI M, MASTALERZ DM, NAKANO Y, MEYER EM, MOREL L, PETERSEN BE, SCOTT EW (2002) Bone marrow cells adopt the phenotype of other cells by spontaneous cell fusion. *Nature* 416: 542-5.
- UCCELLI A, PISTOIA V, MORETTA L (2007) Mesenchymal stem cells: a new strategy for immunosuppression? *Trends Immunol* 28: 219-26.
- UCCELLI A, ZAPPALÀ E, BENVENUTO F, FRASSONI F, MANCARDI G (2006) Stem cells in inflammatory demyelinating disorders: a dual role for immunosuppression and neuroprotection. *Expert Opin Biol Ther* 6: 17-22.
- WANG S, SDRULLA AD, DISIBIO G, BUSH G, NOFZIGER D, HICKS C, WEINMASTER G, BARRES BA (1998) Notch receptor activation inhibits oligodendrocyte differentiation. *Neuron* 21: 63-75.
- WATANABE M, TOYAMA Y, NISHIYAMA A (2002) Differentiation of proliferated NG2-positive glial progenitor cells in a remyelinating lesion. *J Neurosci Res* 69: 826-36.
- WHITACRE CC (2001) Sex differences in autoimmune disease. *Nat Immunol* 2: 777-80.
- WILSON HC, SCOLDING NJ, RAINE CS (2006) Co-expression of PDGF alpha receptor and NG2 by oligodendrocyte precursors in human CNS and multiple sclerosis lesions. *J Neuroimmunol* 176: 162-73.
- WOLSWIJK G (1998) Chronic stage multiple sclerosis lesions contain a relatively quiescent population of oligodendrocyte precursor cells. *J Neurosci* 18: 601-9.
- WOLSWIJK G, NOBLE M (1989) Identification of an adult-specific glial progenitor cell. *Development* 105: 387-400.
- WOODBURY D, REYNOLDS K, BLACK IB (2002) Adult bone marrow stromal stem cells express germline, ectodermal, endodermal, and mesodermal genes prior to neurogenesis. *J Neurosci Res* 69: 908-17.
- WOODBURY D, SCHWARZ EJ, PROCKOP DJ, BLACK IB (2000) Adult rat and human bone marrow stromal cells differentiate into neurons. *J Neurosci Res* 61: 364-70.
- WOODHOO A, ALONSO MB, DROGGITI A, TURMAINE M, D'ANTONIO M, PARKINSON DB, WILTON DK, AL-SHAWI R, SIMONS P, SHEN J, GUILLEMOT F, RADTKE F, MEIJER D, FELTRI ML, WRABETZ L, MIRSKY R, JESSEN KR (2009) Notch controls embryonic Schwann cell differentiation, postnatal myelination and adult plasticity. *Nat Neurosci* 12: 839-47.
- WOODRUFF RH, FRANKLIN RJ (1999) Demyelination and remyelination of the caudal cerebellar peduncle of adult rats following stereotaxic injections of lyssolecithin, ethidium bromide, and complement/antigalactocerebroside: a comparative study. *Glia* 25: 216-28.
- WOODRUFF RH, FRUTTIGER M, RICHARDSON WD, FRANKLIN RJM (2004) Platelet-derived growth factor regulates oligodendrocyte progenitor numbers in adult CNS and their response following CNS demyelination. *Molecular and Cellular Neuroscience* 25: 252-262.
- WU Y, LIU Y, LEVINE EM, RAO MS (2003) Hes1 but not Hes5 regulates an astrocyte versus oligodendrocyte fate choice in glial restricted precursors. *Dev Dyn* 226: 675-89.
- ZAPPALÀ E, CASAZZA S, PEDEMONTE E, BENVENUTO F, BONANNI I, GERDONI E, GIUNTI D, CERAVOLO A, CAZZANTI F, FRASSONI F, MANCARDI G, UCCELLI A (2005) Mesenchymal stem cells ameliorate experimental autoimmune encephalomyelitis inducing T-cell anergy. *Blood* 106: 1755-61.
- ZAWADZKA M, RIVERS LE, FANCY SP, ZHAO C, TRIPATHI R, JAMEN F, YOUNG K, GONCHAREVICH A, POHL H, RIZZI M, ROWITCH DH, KESSARIS N, SUTER U, RICHARDSON WD, FRANKLIN RJ (2010) CNS-resident glial progenitor/stem cells produce Schwann cells as well as oligodendrocytes during repair of CNS demyelination. *Cell Stem Cell* 6: 578-90.
- ZHANG J, LI Y, CHEN J, YANG M, KATAKOWSKI M, LU M, CHOPP M (2004) Expression of insulin-like growth factor 1 and receptor in ischemic rats treated with human marrow stromal cells. *Brain Res* 1030: 19-27.
- ZHANG J, LI Y, LU M, CUI Y, CHEN J, NOFFSINGER L, ELIAS SB, CHOPP M (2006) Bone marrow stromal cells reduce axonal loss in experimental autoimmune encephalomyelitis mice. *J Neurosci Res* 84: 587-95.
- ZHANG J, LI Y, CHEN J, CUI Y, LU M, ELIAS SB, MITCHELL JB, HAMMILL L, VANGURI P, CHOPP M (2005) Human bone marrow stromal cell treatment improves neurological functional recovery in EAE mice. *Exp Neurol* 195: 16-26.
- ZHANG J, BRODIE C, LI Y, ZHENG X, ROBERTS C, LU M, GAO Q, BORNEMAN J, SAVANT-BHONSALE S, ELIAS SB, CHOPP M (2009) Bone marrow stromal cell therapy reduces proNGF and p75 expression in mice with experimental autoimmune encephalomyelitis. *J Neurol Sci* 279: 30-8.
- ZHANG SC, GE B, DUNCAN ID (1999) Adult brain retains the potential to generate oligodendroglial progenitors with extensive myelination capacity. *Proc Natl Acad Sci U S A* 96: 4089-94.
- ZHOU YX, FLINT NC, MURTHY JC, LE TQ, ARMSTRONG RC (2006) Retroviral lineage analysis of fibroblast growth factor receptor signaling in FGF2 inhibition of oligodendrocyte progenitor differentiation. *Glia* 54: 578-90.