

Article

A Bi-Objective Approach for Optimizing the Installation of PATs in Systems of Transmission Mains

Enrico Creaco ^{1,*}, Giacomo Galuppini ¹, Alberto Campisano ², Carlo Ciaponi ¹
and Giuseppe Pezzinga ^{2,*}

¹ Dipartimento di Ingegneria Civile e Architettura, Università degli Studi di Pavia, Via Ferrata 3, 27100 Pavia, Italy; giacomo.galuppini01@universitadipavia.it (G.G.); ciaponi@unipv.it (C.C.)

² Dipartimento di Ingegneria Civile e Architettura, Università degli Studi di Catania, Via Santa Sofia 64, 95123 Catania, Italy; alberto.campisano@unict.it

* Correspondence: creaco@unipv.it (E.C.); giuseppe.pezzinga@unict.it (G.P.); Tel.: +39-(0)382-98-5317 (E.C.)

Received: 11 December 2019; Accepted: 21 January 2020; Published: 23 January 2020

Abstract: This paper proposes the bi-objective optimization for the installation of pumps operating as turbines (PATs) in systems of transmission mains, which typically operate at steady flow conditions to cater to tanks in the service of water distribution networks. The methodology aims to find optimal solutions in the trade-off between installation costs and generated hydropower, which are to be minimized and maximized, respectively. While the bi-objective optimization is carried out by means of a genetic algorithm, an inner optimization sub-algorithm provides for the regulation of PAT settings. The applications concerned a real Italian case study, made up of nine systems of transmission mains. The methodology proved able to thoroughly explore the trade-off between the two objective functions, offering solutions able to recover hydropower up to 83 KW. In each system considered, the optimal solutions obtained were postprocessed in terms of long-life net profit. Due to the large geodesic elevation variations available in the case study, this analysis showed that, in all systems, the optimal solution with the highest value of generated hydropower was the most profitable under usual economic scenarios, with payback periods always lower than 3 years.

Keywords: water distribution networks; transmission mains; pump as turbine; energy recovery; hydropower; multi-objective; optimization

1. Introduction

The contribution of the water industry is not negligible in the total demand of energy in the world [1]. Within this contribution, a major role is played by the extraction and treatment of source water [1], mainly due to the operation of pumping stations. To reduce this component of energy demand, water utilities are more and more often implementing practices to reduce wastes of water in distribution networks [2]. On the other hand, attempts have recently been made to recover energy from water networks and thus to compensate part of the intensive energy consumption associated with water supply. Energy recover can be accomplished by installing devices such as hydro-turbines [3–7] or pumps operating in reverse mode, also called pumps as turbines (PATs) [8–12], within pressurized pipes. Though featuring lower efficiencies than hydro-turbines, PATs feature much lower costs, thus offering themselves as a very cost-effective solution for energy recovery from water distribution networks.

The analysis of the scientific and grey literature concerning the use of hydro-turbines and PATs for energy recovery shows that research efforts have been made mainly in three different directions.

The first direction is concerned with the analysis of the performance of the pump operating in reverse-mode, in terms of head-discharge and efficiency-discharge relationships. In fact, although acknowledging the possibility of using their devices in turbine mode, manufacturers of pumps do not usually provide the performance relationships. Therefore, several works in recent years were dedicated to analyzing, experimentally (e.g., [13,14]) or numerically through computational fluid dynamics (e.g., [15,16]), how the head-discharge and efficiency-discharge relationships of pumps relate to the relationships of the same devices operated in reverse mode, as well as to setting up procedures to derive the latter from the former (e.g., [17,18]).

The second research direction concerns the modeling, operation, and regulation of energy recovery devices in pressurized water networks in an attempt to both generate hydropower and reduce service pressure. In fact, the hydraulic regulation uses a bypass line and control valves to regulate flow, such that the PAT operates at or near the best efficiency point (BEP) [10]. Furthermore, the electric regulation of the PAT may be implemented by connecting the PAT to an inverter [11,12] to adjust the impeller rotational speed as a function of inflow and available head drop. Real time control algorithms can be applied to dynamically adjust the settings of PAT, control valves, and inverter under time varying operational conditions [19,20].

The third main research direction, to which the present paper belongs, concerns the optimization of sites and settings of energy recovery devices in pressurized pipes. In this context, energy production can also be optimized in combination with service pressure to help mitigating leakage in pressurized water networks. In this context, Giugni et al. [21] showed the application of a genetic algorithm to optimize location and settings. These authors considered the following two simplifying assumptions:

- the number of energy recovery devices is a surrogate for their cost;
- these devices have unitary efficiency (that is, their performance curves are neglected).

Additionally, the subsequent works by Corcoran et al. [22], Coelho and Andrade-Campos [23], and Fernández García and McNabola [24] use the number of devices as a surrogate for their total cost in the optimization phase, although removing the simplifying assumption of unitary efficiency made in [21]. Notably, Corcoran et al. [22] compared the effectiveness of three different kinds of algorithms, namely nonlinear programming, mixed integer nonlinear programming, and evolutionary optimization, in the maximization of produced hydropower. Coelho and Andrade-Campos [23] proposed a two-step optimization, which was carried out in a decoupled way. The first step concerned identification of site locations, which was performed using an optimization algorithm tailored to identifying the best locations of pressure reducing valves. A second manual step followed, aiming to identify the turbine models that could be installed at each site. Finally, a financial analysis was carried out to look at installation cost and at income associated with the sale of produced hydropower. Fernández García and McNabola [24] proposed a nonlinear programming algorithm based on the sequential addition of energy recovery devices along the water paths present in a water distribution network. Device installation was iterated until there was no more significant power to be recovered from the network. A financial analysis was also carried out by the two authors to evaluate installation cost, annual income associated with PAT operation, and investment payback period. Unlike the works in [21–24], the works of Fecarotta and McNabola [25] and Tricarico et al. [26] proposed considering the installation cost in the context of the optimization, rather than the number of energy recovery devices. In fact, Fecarotta and McNabola [25] proposed an objective function combining installation costs and annual net income associated with device operation to be used inside a nonlinear mixed integer programming algorithm. The more recent work by Tricarico et al. [26] used a similar objective function into the context of a multi-objective optimization, leading to the identification of optimal sites for energy recovery devices. However, the device settings were not optimized in the methodology proposed in [26].

In this paper, a new multi-objective optimization algorithm is proposed for the installation of energy recovery devices in pressurized water networks, with the main focus on the installation of PATs in systems of transmission mains. As compared to work in [26], the novel algorithm enables optimization of both installation sites and settings. The algorithm is applied with two objective

functions, namely the total installation cost of the devices and the generated hydropower, to be minimized and maximized, respectively. The Pareto fronts obtained with the algorithm lend themselves to being postprocessed in various economic scenarios to help decision makers in the choice of the ultimate solution.

In the following sections, first the methodology is described, followed by the applications to a real case study.

2. Methodology

2.1. PAT Installation

The methodology presented in this paper can be applied to systems of transmission mains that connect water sources to tanks feeding water distribution networks (Figure 1a). These systems are typically branched and operate under steady flow conditions over the whole day. While water distribution tanks are fed by transmission mains with a daily constant water discharge, their storage enables balancing the peaks of network consumption. In existing systems of transmission mains, the maximum water discharges depend only on the available heads at sources and tanks. In some cases, the values are larger than required or limited by source water availability. Therefore, the desired water discharges are enforced by valve regulation, which dissipates energy surpluses.

The redundant energy can be recovered through installation of rotary machines for electric power generation. The choice of number, sites, and models of machines represents an optimization problem aimed at minimizing installation costs and at maximizing the produced hydropower, under the hydraulic constraint of desired water discharges at mains, of fixed heads at source and tank nodes, and of desired heads at internal nodes. It is worth noting that the optimal solutions may not use the whole surplus of energy. In this case, the remaining surplus is dissipated through regulation valves.

In this work, the layout shown in Figure 1 was considered for PAT installation at the generic system main. The PAT was installed in-line with the system main inside a vault. Actually, the asynchronous PAT motor was connected to an inverter, which was in turn connected to the electrical grid (Figure 1b). The presence of the inverter enabled modification of the speed setting of the PAT and, therefore, the maximization of its production of hydropower for each daily value of water discharge in the main. Along each main of the system, a regulation valve was assumed to be present outside the vault to regulate flows as a function of fixed head values at system tanks and of desired head values at inner system nodes. Indeed, while the PAT was regulated to maximize the produced hydropower, some residual head surplus could be dissipated in the regulation valve. At a generic value of the PAT rotation speed, let Q (m^3/s) be the water discharge in the PAT. As a result of the PAT curves of performance, the PAT produces a head drop Y_{PAT} (m) and features a certain efficiency η (-), based on its performance curves. The hydropower P_{PAT} (KW) generated by the PAT is

$$P_{PAT} = \frac{\rho g Q Y_{PAT} \eta}{1000}, \quad (1)$$

where $\rho = 1000 \text{ kg/m}^3$ is water density, and $g = 9.81 \text{ m/s}^2$ is the gravity acceleration.

Finally, let Y_v (m) be the head drop across the regulation valve assumed present along the main line outside of the PAT vault, and let J (-) be the energy friction slope in the main, evaluated by means of the Strickler formula. The friction-related head loss in the main is equal to JL , where L (m) is the length of the main.

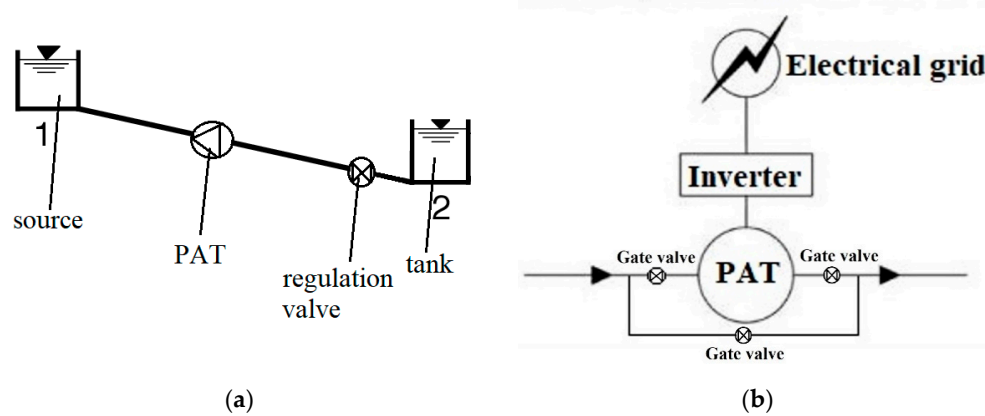


Figure 1. Example of transmission main (a). Layout of pump as turbine (PAT) installation, adapted from [11] (b).

2.2. Optimization Algorithm

The multi-objective genetic algorithm NSGAI [27] was used in this work to search for solutions in the trade-off between two objective functions, namely the total installation cost $C_{inst,tot}$ (€) of the PATs (to be minimized) and the total hydropower $P_{PAT,tot}$ (KW) generated (to be maximized) in each system of transmission mains. While the presence of the inverter enables PAT operation to adjust to yearly variable values of the daily constant water discharge, a yearly average value of the water discharge was considered in the optimizations of the present work.

The first objective function $C_{inst,tot}$ is calculated as the sum of the installation costs of the PAT at the various mains, i.e.,

$$C_{inst,tot} = \sum_{i=1}^{n_m} C_{inst,i} \quad (2)$$

where $C_{inst,i}$ (€) is the cost of the PAT installed in the i -th of the n_m mains. In the case of no PAT installation suggested by the optimizer at the generic main, $C_{inst,i} = 0$.

Indeed, the total installation cost should include other issues such as the costs associated with the approaching of the electrical grid to the PAT site in the case when the grid is not available at close sites.

The second objective function $P_{PAT,tot}$ is calculated as the sum of the hydropower contributions at each main, i.e.,

$$P_{PAT,tot} = \sum_{i=1}^{n_m} P_{PAT,i} \quad (3)$$

where $P_{PAT,i}$ is the hydropower generated in the i -th of the n_m mains. In the case of no PAT installation suggested by the optimizer at the generic main, $P_{PAT,i} = 0$.

Inside NSGAI, each individual is encoded in a set of n_m genes, i.e., decisional variables. Specifically, the i -th of the n_m genes represents the ID of the PAT installed in the i -th of the n_m system mains.

For each solution (set of PATs installed in the mains) proposed by NSGAI, an inner optimization is performed through an embedded single objective genetic algorithm (sub-algorithm) to search for the PAT revolution speeds that might maximize the total hydropower generation in the system. Starting from the curves $H(Q)$ and $P(Q)$ provided by the manufacturer, the corresponding curves $H(Q)$ and $P(Q)$ curves for the PAT were estimated using the methodology proposed in [13]. In this methodology, first the BEP of a PAT is estimated starting from the BEP of the pump operated in direct mode. Then, the performance of the PAT in terms of $H(Q)$ and $P(Q)$ away from the BEP is obtained through polynomial equations.

For each solution proposed by NSGAI and for each set of PAT speeds proposed by the sub-algorithm, a hydraulic simulator based on the global gradient algorithm [28] is used to search for feasible values of Y_v (i.e., $Y_v \geq 0$) for the regulation valves present at the system mains, while respecting the minimum desired heads at the inner nodes and the fixed heads at the system tanks.

The flowchart of instructions carried out for each individual in NSGAI is shown in Figure 2. First, the PATs are located in the system based on individual genes. Then, the total cost $C_{inst,tot}$ of the PATs installed in the system, which is the first objective function of the optimization, is calculated. Then, a sub-algorithm is applied to the PATs for estimating PAT speeds. Then, the total power $P_{PAT,tot}$ generated by the system is calculated, with a penalization applied to infeasible solutions (i.e., solutions with negative value(s) of Y_v).

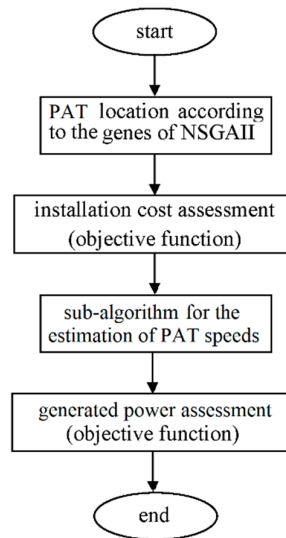


Figure 2. Flow chart of the instructions to carry out for each individual of NSGAI.

2.3. Economic Postprocessing

The optimization described in the previous subsection produces a Pareto front of optimal solutions, each of which features its own distribution of PATs in the system mains, in the trade-off between $C_{inst,tot}$ and $P_{PAT,tot}$. For the choice of the ultimate solution in the Pareto front, an economic criterion can be applied. In this context, the net profit C_p (€) of each solution can be calculated as follows:

$$C_p = C_{sale} - C_{inst,tot} - C_{add} \quad (4)$$

where C_{sale} (€) is the gross profit associated with the sale of hydropower, converted into value at the initial time. This variable can be evaluated as

$$C_{sale} = \sum_{i=1}^T \frac{8,760 c P_{PAT,tot}}{(1+r)^i} \quad (5)$$

where c (€/KW h), T (years), and r (-) are the unit selling price of the electrical energy produced, the useful life of the PAT, and the discount rate for price conversion, respectively. In Equation (5), the numerical value 8,760 is the number of hours in a year. C_{add} (€) represents potential additional costs associated with the PAT (e.g., maintenance costs). Finally, the solution with the highest C_p value in the Pareto front can be selected as the ultimate solution.

Another meaningful postprocessing variable is the payback period, i.e., the amount of time T_b (years) it takes to recover the cost of the investment. While authors in [23,24] used a simplified calculation of T_b , which did not consider the decrease in the net present value as a function of the

selling year, T_b was calculated here iteratively, by searching for the lowest value of T for which C_p is larger than 0 in Equation (4).

3. Applications

3.1. Case Study

The described methodology was applied to the system of networks operated by Azienda Consorziale Servizi Etnei (ACOSET), the major water distribution manager in Catania, Italy. The system was already analyzed in [3] and is characterized by transmission mains that cater to twenty urban centers situated at the foot of the volcano Etna. The main sources for these mains are the Ciapparazzo extraction tunnel, the Maniace source, and numerous ACOSET and private wells (Figure 3).

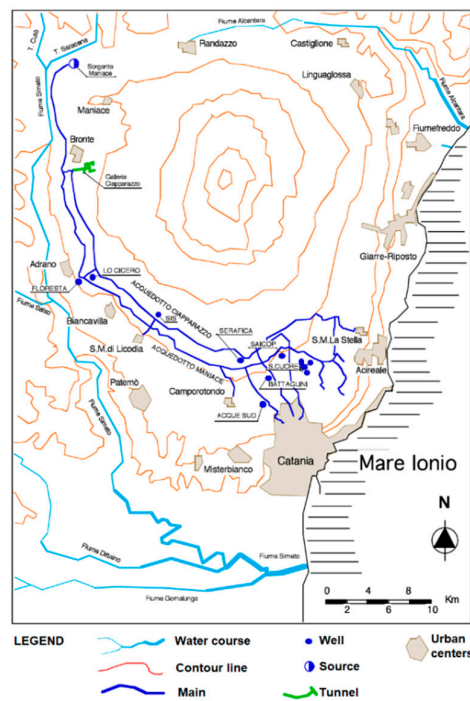


Figure 3. Planview of the water mains; adapted from Pezzinga and Tosto [3].

For the calculations in this paper, nine separate systems of water transmission mains (features reported in Table 1) were considered, in which no PATs are currently present, namely, the systems feeding Ciapparazzo, Adrano, Gravina, Mascalucia, S. Gregorio, S. M. La Stella, Maniace, Camporotondo, and S.Giovanni Galermo. As an example, the qualitative elevation layout of the Ciapparazzo system is shown in Figure 4.

Due to the high geodesic gradients, the considered systems of transmission mains always show a surplus of energy that is currently dissipated through already installed regulation valves (see Figure 4 as an example). As a virtuous alternative option to the full dissipation of the available surplus of energy, the installation of PATs in this system is proposed in this work.

Table 1. Features of the systems of transmission mains.

System	Main	Upstream Node	$i_{ts,um}$ (0/1)	Downstream Node	$i_{ts,dn}$ (0/1)	Q (m^3/s)	H_{um} (m)	H_{dn} (m)	L (m)	D (m)	k ($m^{1/3}/s$)
Ciapparazzo	1	1	1	2	1	0.4	757	733	10,300	0.800	75
	2	2	1	3	0	0.4	733	719	4,090	0.800	75
	3	3	0	4	0	0.325	719	716	1,700	0.800	75
	4	4	0	5	0	0.37	716	715	590	0.800	75
	5	5	0	6	1	0.008	715	595	1,000	0.200	75

	6	6	1	7	1	0.008	595	478	1,600	0.200	75
	7	5	0	8	0	0.362	715	695	3,730	0.700	75
	8	8	0	9	1	0.04	695	667	30	0.200	75
	9	8	0	10	0	0.322	695	695	4,710	0.700	75
	10	10	0	11	1	0.092	695	666	170	0.400	75
	11	10	0	12	0	0.23	695	665	2,300	0.700	75
	12	12	0	13	0	0.27	665	605	550	0.700	75
	13	13	0	14	1	0.02	605	493	2,500	0.150	75
	14	13	0	15	0	0.25	605	670	1,380	0.600	75
	15	15	0	16	1	0.171	670	683	3,790	0.400	75
Adrano	1	1	1	2	1	0.075	733	705	250	0.600	75
	2	2	1	3	1	0.061	705	619	1,150	0.600	75
Gravina	1	1	1	2	0	0.024	435	410	900	0.150	75
	2	2	0	3	1	0.005	410	382	600	0.080	75
	3	2	0	4	1	0.019	410	322	1,900	0.150	75
Mascalucia	1	1	1	2	0	0.049	665	583	1,900	0.250	75
	2	2	0	3	1	0.007	583	577	350	0.150	75
	3	2	0	4	0	0.042	583	483	2,100	0.250	75
	4	4	0	5	1	0.018	483	484	900	0.150	75
S Gregorio	1	1	1	2	0	0.038	476	398	1,400	0.200	75
	2	2	0	3	0	0.019	398	303	1,600	0.150	75
	3	3	0	4	1	0.01	303	389	600	0.125	75
	4	3	0	5	1	0.01	303	347	1,600	0.125	75
S. M. La Stella	1	1	1	2	0	0.01	683	569	3,600	0.125	75
	2	2	0	3	1	0.005	569	426	3,100	0.125	75
Maniace	1	1	1	2	1	0.055	650	645	1,678	0.450	90
	2	2	1	3	1	0.055	645	641	3,690	0.450	90
	3	3	1	4	1	0.055	641	639	1,737	0.450	90
	4	4	1	5	1	0.055	639	638	1,710	0.450	90
	5	5	1	6	1	0.055	638	635	1,650	0.450	90
	6	6	1	7	1	0.095	635	631	2,796	0.450	90
	7	7	1	8	1	0.095	631	628	2,836	0.450	90
	8	8	1	9	1	0.095	628	625	2,043	0.450	90
	9	9	1	10	1	0.095	625	623	1,928	0.450	90
	10	10	1	11	0	0.095	623	620	1,456	0.450	90
	11	11	0	12	1	0.057	620	619	1,456	0.400	90
	12	12	1	13	1	0.057	619	617	1,945	0.400	90
	13	13	1	14	1	0.057	617	613	3,116	0.400	90
	14	14	1	15	1	0.057	613	610	2,365	0.400	90
	15	15	1	16	1	0.008	610	476	1,900	0.250	90
	16	15	1	17	1	0.049	610	607	2,567	0.400	90
	17	17	1	18	1	0.049	607	604	2,873	0.400	90
	18	18	1	19	1	0.049	604	602	28.8	0.400	90
	19	19	1	20	0	0.049	602	600	1,412	0.350	90
	20	20	0	21	1	0.02	600	599	50	0.200	90
	21	20	0	22	1	0.029	600	597	1,412	0.350	90
	22	22	1	23	1	0.029	597	594	1,987	0.300	90
	23	23	1	24	1	0.029	594	591	2,696	0.300	90
Camporotondo	1	1	1	2	0	0.008	599	562	1,750	0.150	75
	2	2	0	3	0	0.006	562	496	1,650	0.125	75
	3	3	0	4	1	0.004	496	461	800	0.100	75
S. G. Galermo	1	1	1	2	0	0.036	420	351	1,300	0.200	75
	2	2	0	3	1	0.018	351	249	220	0.150	75
	3	2	0	4	1	0.018	351	253	1,900	0.150	75

Footnote: the columns represent the system name, the ID of the main, the upstream node of the main, the absence ($i_{is,un} = 0$) or presence ($i_{is,un} = 1$) of a tank/source at the upstream node, the downstream node, the absence ($i_{is,dn} = 0$) or presence ($i_{is,dn} = 1$) of a tank/source at the downstream node, the flowing water discharge Q , the head at the upstream and downstream nodes (H_{un} and H_{dn}) (prescribed for a

tank/source and minimum desired value for an intermediate node), the main length L , diameter D , and Strickler roughness coefficient k .

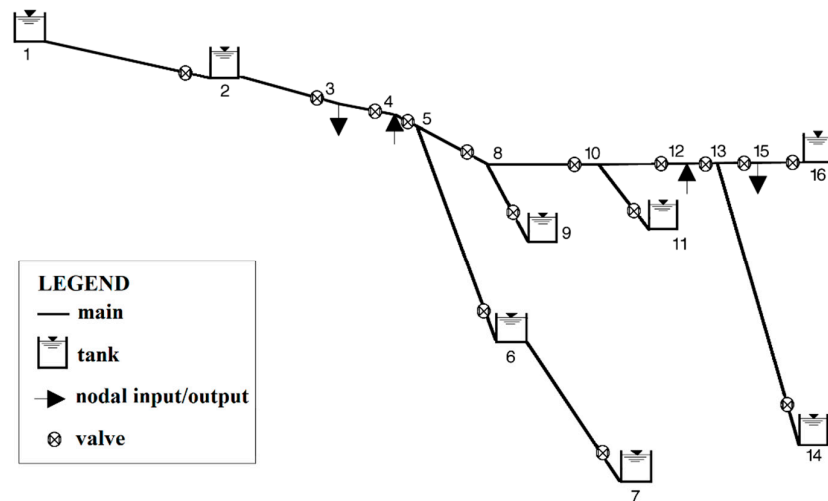


Figure 4. Qualitative elevation layout of the system of transmission mains of Ciapparazzo. The numbers indicate the nodes in Table 1, which also reports the geometrical data of the system.

For the pumps to be installed as turbines in the systems, the 84 pumps of the NM4 series in the catalogue of the manufacturer Calpeda were considered. In their normal operation as pumps, they operate at 1,450 rpm in the 50-Hz electrical grid. In their operation as PATs, the device revolution speed was assumed to be variable within the range 1,450 to 3,000 rpm. Furthermore, the electrical grid was assumed to be available at all sites, thus incurring no extra installation costs.

The cost of the electro-mechanical equipment for the generic PAT was obtained starting from the Calpeda price list and by applying some steps of increase, including the replacement of the asynchronous motor, the installation of an inverter, and a standard amount of +10% for additional hydraulic and electric equipment (e.g., gates and by-pass pipe, and electric wiring and meter). As for the replacement of the asynchronous motor, this must be done because of the different performance curves of the PAT from the same device used in direct mode [29]. Since the cost of the electro-mechanical equipment typical adds up to about 40% of the total installation cost [30], the latter was obtained by multiplying the former by $100/40 = 2.5$.

3.2. Results

3.2.1. Optimization

The methodology described above yielded the Pareto fronts shown in the graphs in Figure 5. As expected, each front reports increasing values of the produced hydropower $P_{PAT,tot}$ as $C_{inst,tot}$ grows. Overall, the maximum values of $P_{PAT,tot}$, at the right end of the Pareto fronts, ranged from about 6 KW to 83 KW in the systems of Camporotondo and Ciapparazzo, respectively. As expected, the larger maximum values of $P_{PAT,tot}$ were associated with larger geodesic height variations and larger water discharges available in the system.

The analysis of the results revealed irregularities in the growth of $P_{PAT,tot}$ as a function of $C_{inst,tot}$, with changes in slope in the Pareto front for all systems. To shed light on this aspect, the Pareto front in the system of Camporotondo, made up of nine solutions (see Table 2), was taken as an example. The first solution was made up of no PAT in the system. As $C_{inst,tot}$ grew, the optimizer first suggested installing only one PAT in main three, which was the last main of the system with the lowest water discharge. For a larger value of $C_{inst,tot} = 6,468$ €, the installation of the PAT at main two was proposed. When the cost further increased, combinations of two PATs, involving first mains one and three and then mains two and three, were proposed. Finally, the two most expensive solutions featured PATs

installed at all sites. Globally, the only PAT model suggested for main one was NM4 40/16C, which was operated at different speeds in the various solutions. The same consideration could be made for main two, in which the only PAT model installed was the NM4 32/20A. Various PAT models, operated at different speeds, were proposed, instead, for main three. For growing values of $C_{inst,tot}$, the change in the PAT model and PAT speed, as well as the introduction of the PAT in new sites, was responsible for slope changes in the Pareto front $P_{PAT,tot}(C_{inst,tot})$.

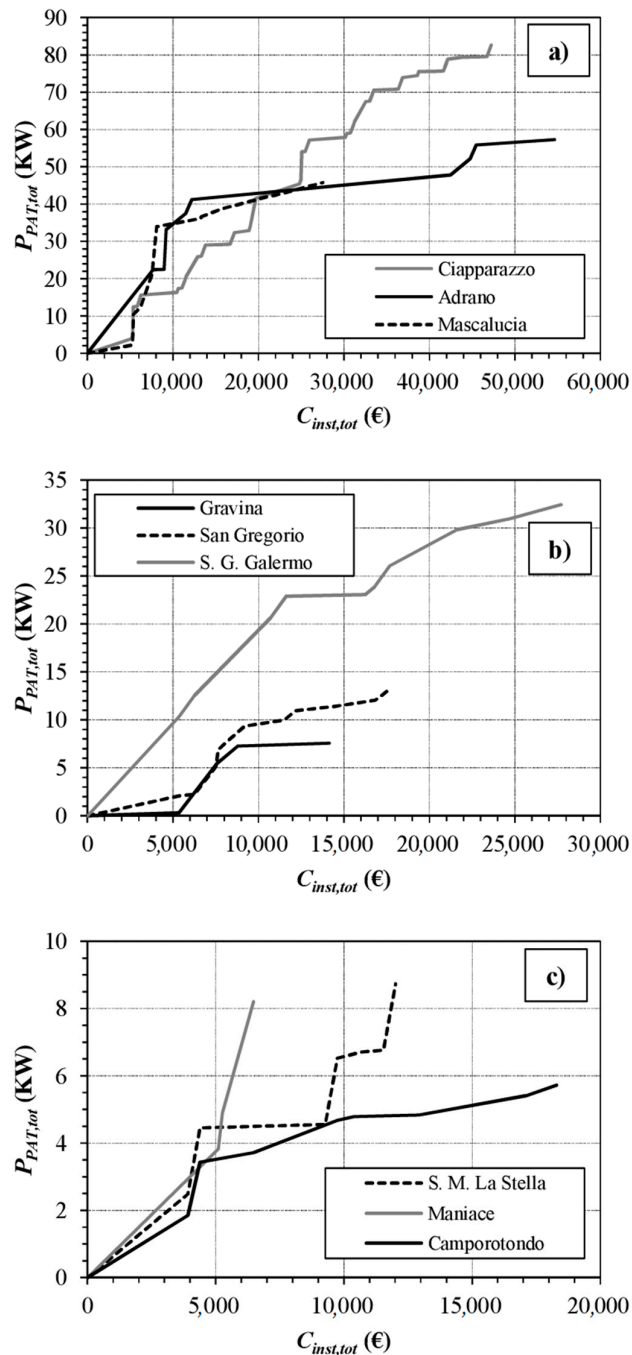


Figure 5. Pareto front of optimal solutions in the trade-off between $C_{inst,tot}$ and $P_{PAT,tot}$ in the systems of (a) Ciapparazzo, Adrano, Mascalucia, (b) Gravina, S. Gregorio, S. G. Galermo, (c) S. M. La Stella, Maniace, and Camporotondo.

Table 2. Solutions in the Pareto front for the system of Camporotondo. Features in terms of PATs installed in the system, PAT speeds, installation cost $C_{inst,tot}$, and hydropower $P_{PAT,tot}$.

Solution	PAT in Main 1	PAT in Main 2	PAT in Main 3	PAT Speed in Main 1	PAT Speed in Main 2	PAT Speed in Main 3	$C_{inst,tot}$ (€)	$P_{PAT,tot}$ (KW)
1							0	0
2			NM4 25/12A			3,000	3,920	1.85
3			NM4 25/160B			3,000	4,391	3.43
4		NM4 32/20A			3,000		6,468	3.72
5	NM4 40/16C		NM4 25/160B	2,577		3,000	9,748	4.68
6		NM4 32/20A	NM4 25/12A		2,499	1,988	10,388	4.79
7		NM4 32/20A	NM4 32/20A		3,000	2,083	12,936	4.84
8	NM4 40/16C	NM4 32/20A	NM4 32/16A	2,537	2,510	2,132	17,094	5.40
9	NM4 40/16C	NM4 32/20A	NM4 32/20A	2,316	2,510	1,671	18,293	5.73

The solutions obtained in the various systems for the highest values of $C_{inst,tot}$ (and therefore of $P_{PAT,tot}$) are presented in Table 3, which reports the features in terms of installed PAT models and adopted speed settings, hydraulic variables, and produced hydropower. As an example of these solutions, the system of S. M. La Stella is shown in Figure 6, also including the qualitative pattern of the head grade line along the system mains. This pattern points out that the head decreased due to friction losses in the mains as well as to local head dissipations at the two PATs and at the two regulation valves.

Table 3. Solutions obtained in the various systems for the highest values of $C_{inst,tot}$.

System	Main	PAT	$C_{inst,i}$ (€)	$H_{act,up}$ (m)	$H_{act,dn}$ (m)	Y_v (m)	JL (m)	Y_{PAT} (m)	Speed (rpm)	P_{PAT} (kW)
Ciapparazzo	1			756.50	733.00	13.58	9.92			
	2			733.00	729.06	0.00	3.94			
	3			729.06	727.98	0.00	1.08			
	4			727.98	727.49	0.00	0.49			
	5	NM4 32/16B	5,107	727.49	595.00	72.21	0.63	59.65	3,000	3.83
	6	NM4 32/16A	5,269	595.00	477.50	30.26	1.00	86.24	3,000	4.90
	7			727.49	721.50	0.00	6.00			
	8	NM4 65/16S	10,908	721.50	667.30	0.00	0.47	53.72	2,932	16.71
	9			721.50	715.50	0.00	5.99			
	10	NM4 125/25E	19,697	715.50	665.50	2.56	0.35	47.09	3,000	41.58
	11			715.50	714.01	0.00	1.49			
	12			714.01	713.52	0.00	0.49			
	13	NM4 40/16A	6,262.5	713.52	493.40	15.77	45.38	158.96	3,000	15.62
	14			713.52	711.11	0.00	2.41			
	15			711.11	683.00	1.37	26.74			
Total			47,243							82.65
Adrano	1	NM4 125/25A	42,428	733.00	705.00	0.00	0.04	27.96	1,511	16.05
	2	NM4 80/20C	12,206	705.00	619.00	4.89	0.12	80.99	3,000	41.24
Total			54,634							57.29
Gravina	1			434.00	410.47	0.00	23.53			
	2	NM4 40/16C	5,357	410.47	382.00	0.85	19.45	8.18	1,618	0.30
	3	NM4 50/20C	8,784	410.47	322.00	0.93	31.13	56.42	2,976	7.27
Total			14,141							7.58
Mascalucia	1	NM4 80/20B	13,675	665.00	588.85	0.00	13.30	62.85	3,000	24.76
	2			588.85	577.00	11.18	0.67			
	3	NM4 65/20A	13,858	588.85	508.32	0.00	11.03	69.50	3,000	21.01

	4			508.32	484.00	11.08	13.23			
Total			27,533							45.77
S Gregorio	1	NM4 80/20C	12,206	476.00	421.71	0.00	19.78	34.51	2,672	10.97
	2			421.71	395.50	0.00	26.21			
	3			395.50	389.00	0.00	6.50			
	4	NM4 40/16C	5,357	395.50	347.00	2.09	17.33	29.08	3,000	2.07
Total			17,563							13.04
S. M. La Stella	1	NM4 40/20B	7,630	683.00	569.30	14.20	38.99	60.51	2,820	4.29
	2	NM4 25/160B	4,391	569.30	425.70	12.61	7.53	123.45	3,000	4.45
Total			12,021							8.74
Maniace	1			650.00	645.40	4.14	0.46			
	2			645.40	641.40	3.00	1.00			
	3			641.40	638.80	2.13	0.47			
	4			638.80	637.70	0.63	0.47			
	5			637.70	634.85	2.40	0.45			
	6			634.85	631.00	1.58	2.27			
	7			631.00	627.75	0.95	2.30			
	8			627.75	625.30	0.79	1.66			
	9			625.30	622.85	0.89	1.56			
	10			622.85	620.00	1.67	1.18			
	11			620.00	619.10	0.10	0.80			
	12			619.10	616.90	1.13	1.07			
	13			616.90	613.00	2.19	1.71			
	14			613.00	610.20	1.50	1.30			
	15	NM4 32/20A	6,468	610.20	475.50	5.77	0.25	128.68	3,000	8.21
	16			610.20	607.00	2.16	1.04			
	17			607.00	603.50	2.34	1.16			
	18			603.50	602.30	0.04	1.16			
	19			602.30	601.14	0.00	1.16			
	20			601.14	599.00	2.00	0.14			
	21			601.14	596.85	3.88	0.41			
	22			596.85	593.85	1.69	1.31			
	23			593.85	591.00	1.08	1.77			
Total			6,468							8.21
Camporotondo	1	NM4 40/16C	5,357	599.00	574.43	0.00	5.08	19.49	2,316	1.20
	2	NM4 32/20A	6,468	574.43	497.19	0.00	7.13	70.12	2,510	3.49
	3	NM4 32/20A	6,468	497.19	461.00	0.00	5.05	31.14	1,671	1.03
Total			18,293							5.73
S. G. Galermo	1	NM4 65/16S	10,908	420.10	362.76	0.00	16.49	40.85	2,410	11.79
	2	NM4 50/25B	11,437	362.76	248.55	0.00	3.23	110.98	2,616	12.91
	3	NM4 40/16C	5,357	362.76	253.00	0.00	27.94	81.83	2,424	7.74
Total			27,702							32.44

Footnote: the columns represent the system name, the main ID, the PAT model installed, the installation cost $C_{mst,i}$, the calculated upstream ($H_{act,un}$) and downstream ($H_{act,dn}$) head, the head drop Y_v in the valve, the head loss JL in the main, the head drop Y_{PAT} in the PAT, the PAT speed setting, and produced hydropower P_{PAT} .

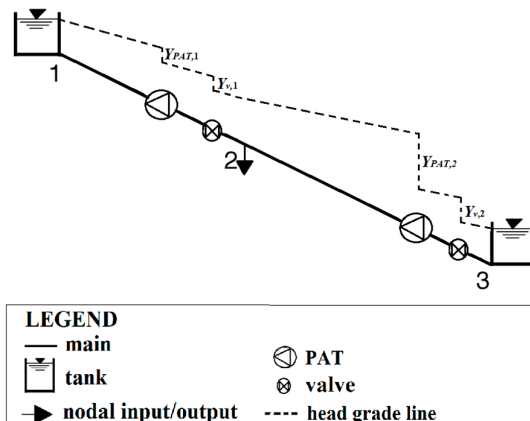


Figure 6. Layout of the system of transmission mains of S. M. La Stella. Qualitative pattern for the head grade line for the solution with $C_{inst,tot} = 12,021$ € and $P_{PAT,tot} = 8.74$ KW. See Table 3 for numerical values.

3.2.2. Economic Postprocessing

The Pareto fronts of optimal solutions shown in Figure 5 were postprocessed to obtain curves of net profit C_p as a function of the total installation cost $C_{inst,tot}$ (see Figure 7). In these calculations, a useful life $T = 20$ years was considered for the PAT. C_{add} in Equation (4) was assumed to include the annual maintenance costs, which were set at 3% of $C_{inst,tot}$ and converted into present value at year 0. As an example, the Pareto front for the system of Camporotondo (reported in Figure 5c) was postprocessed by considering four alternative scenarios.

The main features of the four scenarios are:

- scenario 1, with $c = 0.1561$ €/KW h, $r = 0.04$;
- scenario 2, with $c = 0.1561$ €/KW h, $r = 0.02$;
- scenario 3, with $c = 0.1561$ €/KW h, $r = 0.06$;
- scenario 4, with $c = 0.08$ €/KW h, $r = 0.04$.

In scenario 1, the values of c and r represent currently typical conditions in Italy for the sale of hydropower and for the discount rate for cost conversion, respectively. Scenario 2 differs from scenario 1 in the lower value of r , thus resulting in higher present worth values for sold hydropower and for maintenance costs. Compared to scenario 1, scenario 3 has a larger value of r , resulting in lower present worth values for sold hydropower and for maintenance costs. Finally, scenario 4 differs from scenario 1 because of its lower value of c .

Overall, Figure 7 shows that, in scenario 1, C_p tends to grow, over almost the whole range of $C_{inst,tot}$ values, up to a value of about 81,000 €. Therefore, the most profitable solution in terms of C_p is that featuring the highest value of $C_{inst,tot} = 18,293$ € (solution 9 in Table 2). In comparison with scenario 1, due to the different values of r , the pattern of $C_p(C_{inst,tot})$ in scenarios 2 and 3 is slightly higher and lower, respectively. In both scenarios, the superiority of solution 9 persists because of its large generated hydropower. In fact, for all the considered values of r , the sale of hydropower pays back the large investment and maintenance costs associated with solution 9. Under scenario 4, C_p rapidly grows up to a quite stable value around 28,000 €, and the maximum of C_p is at 30,964 €, obtained for $C_{inst,tot} = 10,388$ € (solution 6 in Table 2). In this case, due to the low value of c , the large investment and maintenance costs of solution 9 are less paid back in the long run, in comparison with other solutions.

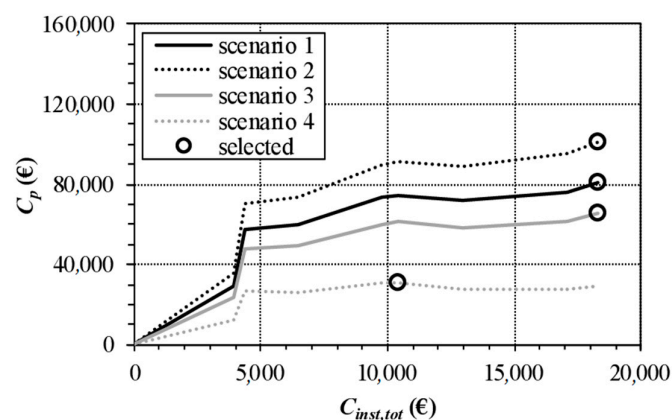


Figure 7. Curves of total net profit C_p as a function of $C_{inst,tot}$, obtained in scenarios 1–4, by postprocessing the Pareto front in Figure 5c for the system of Camporotondo.

Overall, the economic postprocessing in the system of Camporotondo shows that the most expensive solution in terms of $C_{inst,tot}$ yielded by the optimization tends to be the most profitable

solution unless the economic scenario used for the postprocessing differs largely from the typical ones in terms of c .

Scenario 1 for the economic postprocessing was applied for all the considered systems. In all systems, the most profitable solution was the right end solution in the Pareto front in Figure 5, thus confirming that the largest optimal investment is well paid back by the sale of electrical energy. Overall, the net profit values C_p ranged from about 8.1×10^4 € to about 1.5×10^6 €, for the systems of Camporotondo and Ciapparazzo, respectively. Higher values of net profit were associated with larger values of the produced hydropower $P_{PAT,tot}$. The payback period T_b was lower than 2 years in all cases except for the system of Camporotondo, for which $T_b = 3$ years. Overall, these values of T_b were even lower than those observed in [24], due to the more favorable conditions of geodesic elevation variations in the present case study.

4. Discussion and Conclusions

In this paper, the bi-objective genetic optimization was proposed for tackling the problem of optimal installation of PATs in existing systems of transmission mains. The proposed methodology is able to search for optimal locations and speed settings of PATs in each system in the trade-off between the total installation cost and the produced hydropower, to be minimized and maximized, respectively. The applications concerned various topologically simple systems of transmission mains managed by ACOSSET in Italy, while including in the analysis the estimated installation costs and the expected reverse-mode performance of the pumps produced by a manufacturer.

The application of the bi-objective optimization enabled Pareto fronts of optimal PAT installation solutions in the trade-off between installation costs and hydropower produced to be obtained. Even if the optimization of PAT locations and settings was performed in this case on yearly average water discharges at the mains, the presence of the inverter in the installation enables adjustment of the operation of each PAT to variable values of the daily water discharge in the year. The analysis of these Pareto fronts revealed that, as the cost grows, the power produced grows irregularly. In fact, as the installation cost varies in the generic system, optimal solutions are found with variable numbers, models, and speeds of PATs. Based on this result, it is expected that algorithms based on the sequential addition of PATs and keeping PAT speeds unchanged during the iterations, such as that proposed in [24], may lead to sub-optimal solutions. However, it must be remarked that the application of the bi-objective optimization took computational time with order of magnitude of hours/days for the simple case systems considered in this work. Therefore, computational times would become prohibitive for more topologically complex systems.

Starting from the trade-off between installation costs and generated hydropower, which is explored in a single optimization on each system, a quick economic postprocessing enables analysis of how optimal solutions perform in terms of long-cycle net profit and payback periods in various economic scenarios, thus supporting decision makers in the choice of the ultimate design solution. This marks a significant improvement compared to the single objective optimization, in which one optimization must be carried out for each considered economic scenario.

The following conclusions can be drawn from this work:

- the installation of PATs confirms itself as a valuable solution for energy recovery from pressurized water networks;
- in the case-study considered, made up of transmission mains featuring high geodesic elevation variations, the payback period for the installation investment ranges from 1 to 3 years, lower than those previously remarked in the scientific literature;
- in the case-study considered, the most profitable solutions at all systems in typical economic scenarios are those associated with the maximum hydropower recovered, which ranges from about 6 KW to 83 KW.

Future work will be dedicated to making the methodology feasibly applicable to more topologically complex systems under time varying operating conditions.

Author Contributions: Conceptualization, E.C. and G.P.; methodology, E.C. and G.G.; writing—original draft preparation, E.C. and G.G.; writing—review and editing, A.C., C.C., and G.P. All authors have read and agreed to the published version of the manuscript.

Funding: This research received no external funding.

Conflicts of Interest: The authors declare no conflict of interest.

References

1. IEA (International Energy Agency). Water Energy Nexus: Excerpt from the World Energy Outlook 2016. Available online: <https://www.iea.org/publications/freepublications/publication/WorldEnergyOutlook2016ExcerptWaterEnergyNexus.pdf> (accessed on 22 May 2019).
2. Xu, Q.; Chen, Q.; Ma, J.; Blanckaert, K.; Wan, Z. Water saving and energy reduction through pressure management in urban water distribution networks. *Water Resour. Manag.* **2014**, *28*, 3715–3726. doi:10.1007/s11269-014-0704-1.
3. Pezzinga, G.; Tosto, G. Adeguamento energetico di reti di adduzione idrica in pressione. *L'Acqua* **2001**, *1*, 27–34. (In Italian)
4. Sammartano, V.; Sinagra, M.; Filianoti, P.; Tucciarelli, T. A Banki-Michell turbine for in-line water supply systems. *J. Hydraul. Res.* **2017**, *55*, 686–694. doi:10.1080/00221686.2017.1335246.
5. Samora, I.; Manso, P.; Franca, M.; Schleiss, A.; Ramos, H. Energy recovery using micro-hydropower technology in water supply systems: The case study of the city of Fribourg. *Water* **2016**, *8*, 344. doi:10.3390/w8080344.
6. Sinagra, M.; Sammartano, V.; Morreale, G.; Tucciarelli, T. A new device for pressure control and energy recovery in water distribution networks. *Water* **2017**, *9*, 309. doi:10.3390/w9050309.
7. Bonthuys, G.J.; van Dijk, M.; Cavazzini, G. Water distribution system energy recovery and leakage reduction optimisation through hydro turbines. *J. Water Resour. Plan. Manag.* **2016**, *142*, 04015045.
8. Ramos, H.; Borga, A. Pumps as turbines: An unconventional solution to energy production. *Urban Water* **1999**, *1*, 261–263. doi:10.1016/S1462-0758(00)00016-9.
9. Agarwal, T. Review of pump as turbine (PAT) for microhydropower. *Int. J. Emerg. Technol. Adv. Eng.* **2012**, *2*, 163–169; ISSN 2250-2459.
10. Carravetta, A.; Del Giudice, G.; Fecarotta, O.; Ramos, H. Energy production in water distribution networks: A PAT design strategy. *Water Resour. Manag.* **2012**, *26*, 3947–3959. doi:10.1007/s11269-012-0114-1.
11. Carravetta, A.; Del Giudice, G.; Fecarotta, O.; Ramos, H. PAT design strategy for energy recovery in water distribution networks by electrical regulation. *Energies* **2013**, *6*, 411–424. doi:10.3390/en6010411.
12. Alberizzi, J.C.; Renzi, M.; Nigro, A.; Rossi, M. Study of a Pump-as-Turbine (PaT) speed control for a Water Distribution Network (WDN) in South-Tyrol subjected to high variable water flow rates. *Energy Procedia* **2018**, *148*, 226–233.
13. Derakhshan, S.; Nourbakhsh, A. Experimental study of characteristic curves of centrifugal pumps working as turbines in different specific speeds. *Exp. Therm. Fluid Sci.* **2008**, *32*, 800–807. doi:10.1016/j.expthermflusci.2007.10.004.
14. Pugliese, F.; De Paola, F.; Fontana, N.; Giugni, M.; Marini, G. Performance of vertical-axis pumps as turbines. *J. Hydraul. Res.* **2018**, *56*, 482–493. doi:10.1080/00221686.2017.1399932.
15. Nautiyal, H.; Kumar, V.; Thakur, A. CFD Analysis on Pumps working as Turbines. *Hydro Nepal* **2010**, *6*, 35–37.
16. Fecarotta, O.; Carravetta, A.; Ramos, H. CFD and comparisons for a pump as turbine: Mesh reliability and performance concerns. *Int. J. Energy Environ.* **2011**, *2*, 39–48.
17. Marchiori, I.N.; Lima, G.M.; Brentan, B.M.; Junior, E.L. Effectiveness of methods for selecting pumps as turbines to operate in water distribution networks. *Water Supply* **2018**, *19*, 417–423. doi:10.2166/ws.2018.086.
18. Novara, D.; McNabola, A. A model for the extrapolation of the characteristic curves of pumps as turbines from a datum best efficiency point. *Energy Convers. Manag.* **2018**, *174*, 1–7. doi:10.1016/j.enconman.2018.07.091.
19. Fontana, N.; Giugni, M.; Glielmo, L.; Marini, G. Real time control of a prototype for pressure regulation and energy production in water distribution networks. *J. Water Resour. Plann. Manag.* **2016**, *142*, 04016015. doi:10.1061/(ASCE)WR.1943-5452.0000651.

20. Fontana, N.; Giugni, M.; Glielmo, L.; Marini, G.; Zollo, R. Hydraulic and Electric Regulation of a Prototype for Real-Time Control of Pressure and Hydropower Generation in a Water Distribution Network. *J. Water Resour. Plann. Manag.* **2018**, *144*, 04018072.
21. Giugni, M.; Fontana, N.; Ranucci, A. Optimal location of PRVs and turbines in water distribution systems. *J. Water Resour. Plan. Manag.* **2014**, *140*, 06014004. doi:10.1061/(ASCE)WR.1943-5452.0000418.
22. Corcoran, L.; McNabola, A.; Coughlan, P. Optimization of water distribution networks for combined hydropower energy recovery and leakage reduction. *J. Water Resour. Plan. Manag.* **2015**, *142*, 04015045. doi:10.1061/(ASCE)WR.1943-5452.0000566.
23. Coelho, B.; Andrade-Campos, A. Energy recovery in water networks: Numerical decision support tool for optimal site and selection of micro turbines. *J. Water Resour. Plan. Manag.* **2018**, *144*, 04018004. doi:10.1061/(ASCE)WR.1943-5452.0000894.
24. Fernández García, I.; Mc Nabola, A. Maximizing Hydropower Generation in Gravity Water Distribution Networks: Determining the Optimal Location and Number of Pumps as Turbines. *J. Water Resour. Plan. Manag.* **2020**, *146*, 04019066.
25. Fecarotta, O.; McNabola, A. Optimal location of pump as turbines (PATs) in water distribution networks to recover energy and reduce leakage. *Water Resour. Manag.* **2017**, *31*, 5043–5059. doi:10.1007/s11269-017-1795-2.
26. Tricarico, C.; Morley, M.S.; Gargano, R.; Kapelan, Z.; Savic, D.; Santopietro, S.; Granata, F.; De Marinis, G. Optimal energy recovery by means of pumps as turbines (PATs) for improved WDS management. *Water Sci. Technol. Water Supply* **2018**, *18*, 1365–1374. doi:10.2166/ws.2017.202.
27. Deb, K.; Pratap, A.; Agarwal, S.; Meyarivan, T. A Fast and Elitist Multiobjective Genetic Algorithm: NSGA-II. *IEEE Trans. Evolut. Comput.* **2002**, *6*, 182–197.
28. Todini, E.; Pilati, S. A gradient algorithm for the analysis of pipe networks. Computer Application in Water Supply. In *System Analysis and Simulation*; Coulbeck, B., Choun-Hou, O., Eds.; John Wiley & Sons: London, UK, 1988; Volume I, pp. 1–20.
29. Novara, D.; Carravetta, A.; McNabola, A.; Ramos, H. Cost Model for Pumps as Turbines in Run-of-River and In-Pipe Microhydropower Applications. *J. Water Resour. Plan. Manag.* **2019**, *145*, 04019012.
30. Chapallaz, J.M.; Eichenberger, P.; Fischer, G. *Manual on Pumps Used as Turbines*; VIEWEG: 1992. Available online: <http://skat.ch/book/manual-on-pumps-used-as-turbines-volume-11/> (accessed on 22 January 2020).



© 2020 by the authors. Licensee MDPI, Basel, Switzerland. This article is an open access article distributed under the terms and conditions of the Creative Commons Attribution (CC BY) license (<http://creativecommons.org/licenses/by/4.0/>).