

10-7-2000

Vitis vulpina L.

Bob Edgin

Illinois Nature Preserves Commission, Bob.Edgin@illinois.gov

Follow this and additional works at: http://thekeep.eiu.edu/herbarium_specimens_byname



Part of the [Botany Commons](#)

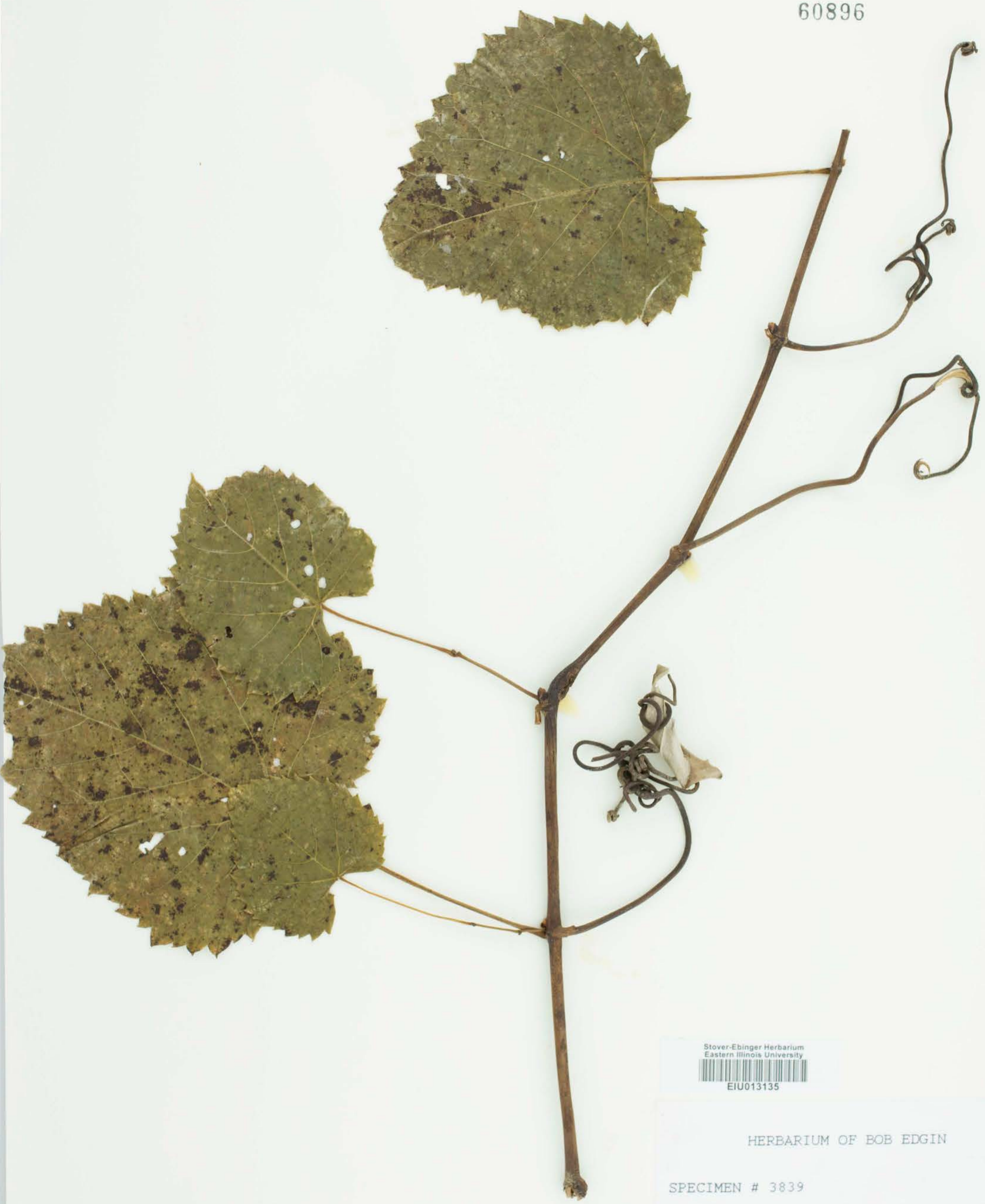
Recommended Citation

Vitaceae, *Vitis vulpina*, L. USA, Illinois, Lawrence, Upland forest at Robeson Hills Nature Preserve. Lawrence County. IL. Location 20. T3N , R10W, 2 PM, 2000-10-07, Edgin, Bob, 3839, (EIU). Stover-Ebinger Herbarium, Eastern Illinois University. http://thekeep.eiu.edu/herbarium_specimens_byname/18621



STOVER-EBINGER
EASTERN ILLINOIS UNIVERSITY

60896



Stover-Ebinger Herbarium
Eastern Illinois University
EIU013135

HERBARIUM OF BOB EDGIN

SPECIMEN # 3839

Vitis vulpina L.

Vitaceae

Upland forest at Robeson Hills Nature Preserve, Lawrence County, IL

Location 20, T3N, R10W, 2 PM

October 7, 2000

Verified by: J. E. Ebinger