



Analysis of Different Diagnostic Methods of Influenza in Horses*

Mihajlo Erdeljan¹, Ivana Davidov¹, Ramiz Cutuk², Dragan Rogan¹ & Aleksandar Potkonjak¹

ABSTRACT

Background: Equine Influenza is a serious, acute respiratory illness with characteristic clinical signs. The disease is caused by family of Orthomyxoviridae, genera Influenza virus A by two subtypes H7N7 and H3N8. Currently, there is believe that H7N7 has been replaced as a predominant subtype with the H3N8. Horse infection with influenza virus can be detected by serological tests on paired sera using HI test. Commercial rapid tests could be used for the detection of influenza virus. Recently it is widely use a PCR method as fast and more specific methods.

Materials, Methods & Results: Fifty horses and one pony, age between one and 22 years have been included in experiment. Horses were of different race, sex, and age and vaccination status. Ten out of total 51 (10/51) have been regularly vaccinated against EI. Prior to initiation of these study epidemiological survey has been performed. The clinical examination has been followed by blood sampling for blood cell and serum extraction. The serums were evaluated by HI method. Nasal swabs are taken from both nostrils twice, one was frozen for virus detection by RT-qPCR while another was used for detection of EI virus by Directi-gen™ FLU A rapid test. Analysis of titers of antibody revealed that 7 horses (14%) had specific antibodies (IgG) against subtype H7N7, while 9 horses (18%) had specific antibodies against H3N8. In the same time 4 horses had specific antibodies against both subtypes. Serological data confirmed that from 48 horses (96%) had the titer of antibodies greater than 16 against H7N7, while 40 horses (80%) had the specific antibodies (IgG) against H3N8. We found quite unexpected presence of specific antibodies (IgG) for H7N7 in horses that have not been previously vaccinated with H7N7 subtype. These horses never been utilized for sport activity and there was no legal requirements for their vaccination. Could horses with specific antibodies for H7N7 be transfected from vaccinated horses we could not confirm with scientific evidence either we could not have evidence that wild and domestic birds played a significant role especially knowing that horses are dead end of further we could confirm it. Our findings unequivocally confirmed that EI virus subtype H7N7 antibodies (IgG) were present in horses that have not been vaccinated and this is serological evidence that virus H7N7 is circulating in these geographical areas.

Discussion: Fast and reliable diagnosis and isolation of suspicious horses represent the first line of defense against pandemic influenza. Recognition of clinical signs (fever, depression, sharp cough and nasal discharge) along with epizootical survey provides the basis for the early detection of infection. In some cases, cough and rapid spread of symptoms of cough in a group of horses that were either unvaccinated against influenza virus or have been in contact with influenza virus infected horses can clearly point out to the EI virus. The definitive confirmation of EI virus could be done by virus isolation on tissue culture or embryonated eggs followed by detection of virus nucleic acid by RT-PCR. Our data suggest that a substantial number of horses (90%) that have not been vaccinated or vaccinated irregularly had specific antibodies against both subtypes of EI, what suggest that those horses have been exposed to viruses sometimes during their lifetime. Additionally, despite the fact that 20% of horses had some signs of respiratory disease that resemble EI we were not able to confirm EI nucleic acid by RT-PCR while Directi-gene™ assay confirmed virus presence just in two horses. Failure to detect virus nucleic acid could be due to fact that nasal swab samples have been taken at the end of the clinical symptoms, other authors have similar PCR negative patient which displayed a significant rising titre to influenza type A.

Keywords: HI test, horse, influenza, PCR.

INTRODUCTION

Equine Influenza is a serious, acute respiratory illness caused by family of *Orthomyxoviridae*, genera Influenza virus type A. There are two subtypes of Equine Influenza virus: type 1 (H7N7) and type 2 (H3N8). Last epidemic of H7N7 subtype was confirmed in 1979 [1], and it is now circulating at low levels [17], so there is believe that H7N7 has been replaced as a predominant subtype with the H3N8 [11].

Virus is highly infectious respiratory pathogen of ungulates [6,12] and spreads rapidly in herds of seronegative ungulates. Morbidity range from 10-100% and the mortality rate is 0.5-10% [16].

Clinical signs are cough, pyrexia, dyspnoea, nose discharge, anorexia, depression and inappetence [7].

Vaccination is recommended and the protection is carried out via neutralizing antibodies [8].

Infection can be detected by serological tests on paired sera and increase of the specific antibodies (IgG) four or more times. Titer higher than 10 should also be considered as a positive [2]. It could be measured by: hemagglutination inhibition test (HI), single radial hemolysis (SRH), both recommended by OIE and other tests [10,14].

In Serbia, during the epidemic in 2004 almost 100% of horses seropositive to EI [15], a large number of sick horses was recorded (380), many horses were withdrawn from training and two horses died [15], they were H3N8 subtype [2]. Latest research on donkeys revealed specific antibodies in 26.5% on avian serotypes H5N1 and H7N2 [18].

Virus detection can be carried out by Directigen™ FLU-A assay [5] or virus isolation. Recently it is recommended use of PCR method [9,14].

The aim of this work is to compare the different methods of diagnosis of influenza in horses.

MATERIALS AND METHODS

Animals

Fifty horses and one pony, age between one and 22 years have been included in experiment. Horses were of different race, sex, and age and vaccination status. Ten out of total 51 (10/51) have been regularly vaccinated against EI. Two horses were previously vaccinated during their race activities but vaccination has been seized three years prior to this evaluation. Horses were kept in different ambient condition and

different group size, some were kept in small groups of 1-4, some in groups of 6 horses, while horses kept in horse riding club were kept in group of 13. It is important to mention that nine horses were kept on pasture during the vegetation period and they have been in contact with variety of animal species including the: other ungulates, birds and cattle. In general all horses were exposed to birds because of being held in open or semi-closed stables.

Prior to initiation of these study epidemiological survey has been performed and the owners questionnaire has been prepared in regards to previous history of disease that could possibly resemble EI infection. Clinical examination of horses was performed with emphasis on respiratory tract; clinical examination included auscultation, auscultation and measurement of body temperature. Blood sampling for blood cell count and determination of immunological status for EI was performed by blood withdrawal from v. jugular and specific antibodies against EI were evaluated by HI method. Blood for blood cell count was collected into 1.3 mL tube with added EDTA anticoagulant and samples immediately transported to the laboratory. Blood count was performed by horse program with Idexx VetAutomated Hematology Analyzer¹. Blood samples for serology evaluation were collected into vacutainers with clot activator of 10 mL, blood was allowed to spontaneously coagulate and then was left overnight at 4°C, centrifuged at 1,448 g in order to separate sera. Sera were kept at - 20°C prior to evaluation for presence of specific antibodies by HI test. HI test was performed by following the guidelines of OIE [11].

Reference viruses

Equine Influenza type A, A1 Prague H7N7 (A/Equine/1/Prague/56) and Equine Influenza type A2, Miami H3N8(A/Equine/Miami/1/63)². Above mentioned viruses have been used as reference viruses for HI testing.

Nasal Swabs

Nasal swabs are taken from both nostrils and then submersed into transport media for viruses, chlamidia and mycoplasma³. One swab sample was frozen for virus detection by PCR while another swab sample was used to perform rapid test for detection of EI virus by Directigen™ FLU A rapid test⁴. Directigen™ rapid test was performed by following the manufacture guidelines.

Detection of the EI virus RNA in nasal swabs was performed by utilizing in-house method based on the methodology of single-TaqMan reverse transcription reaction - polymerase chain reaction in real-time TaqMan based on one step reverse transcription real-time PCR (RT-qPCR) that is amplifying part of the M gene coding for the synthesis of matrix proteins of all influenza A viruses regardless of the type of host (influenza A viruses of birds, horses, pigs, humans etc. Viral RNA was extracted using a commercial kit ISOLATE II RNA Mini Kit⁵ according to the manufacturer's instructions. Reaction one-step RT-qPCR was conducted using a commercial kit RNA UltraSense™ One-Step qRT-PCR System⁶ with the primers (forward M gene primer SpaMgen F: 5'-AGA TGA GTC TTC TAA CCG AGG TCG-3' and reverse M gene primer SpaMgen R: 5'-TGC AAA AAC ATC TTC AAG TCT CTG-3') and probe (M gene probe SpaMgen P: 5'-6-FAM-TCA GGC CCC CTC AAA GCC GA-TAMRA-3') that target the matrix protein gene regions of all influenza A viruses [10]. Briefly, each reaction contained 15 µL of reaction mix containing 1 X RNA UltraSense reaction mix, 20 µL of each primer, 10 µM of WNproC probe, 1X ROX reference dye and 1 µL of RNA UltraSense enzyme mix., 5 µL of nucleic

acid extract samples were added to make a final reaction volume of 20 µL. The thermocycling conditions were: reverse transcription 15 min at 52°C, 2 min at 95°C for DNA denaturation and reverse transcription deactivation, followed by 50 cycles of denaturation of 15 seconds at 95°C and product annealing/extension for 50 s at 60°C. All TagMan RT-qPCR reactions were done by 7500 Real Time RT-PCR System Instrument⁶. Quality Controls were included in each reaction. As positive virus control both Influenza H3N8 (A/equine/Miami/1/1963/) and Influenza strain H7N7 (A/Equine/Prague/1/1956) have been used while RNA/DNA free water was used as a negative control.

RESULTS

During the first clinical examination of horse's clinical signs of disease were diagnosed in 10 animals, clinical signs were slight serous discharge from the nose or mucopurulent discharge, crepitus, cough, conjunctivitis and enlargement of submandibular lymph nodes. In the second examination these symptoms disappeared or were less pronounced. Displayed results in Table 1 reflect only animals that exhibited one or more clinical symptoms.

Table 1. Results of clinical examination of horses.

No. of animals with clinical symptom	Clinical symptoms				
	Serous discharge	Mucopur. discharge	Crepitus	Cough	Enlargement of submandibular ln. glands
1	+			+	
2	+				
3	+				
4	+				
5				+	
6				+	
7				+	
8	+				
9		+	+	+	+
10	+				
% of total number of horses	11,76	1,96	1,96	9,80	1,96

Hematological evaluation

Hematology testing showed that 25 horses had some of the blood parameters outside of the reference values, some horses showed presence of anemia, lymphopenia, leukopenia, leukocytosis, monocytosis or leukocytosis with neutrophilia. Total of 16 horses had haematological parameters outside of normal value. The

numbers of animals which had hematological values outside of reference values are shown in the Figure 1.

In figure 1, it can be seen that 4 horses were diagnosed with mild anemia, while leukopenia was diagnosed in 7, leukocytosis in 3, lymphopenia in 13, lymphocytosis in 4, granulocytosis in 7, leukocytosis with neutrophilia in 7.

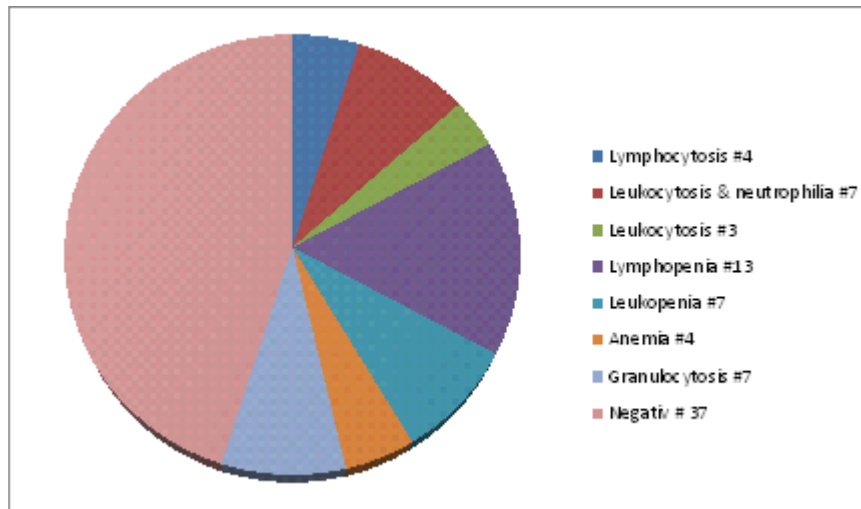


Figure 1. Distribution of non physiological hematological values.

Serological evaluation

Hemagglutination inhibition test revealed that nine horses (18%) were diagnosed with four-fold or greater increase in IgG antibody titer against H3N8 subtype for influenza virus. Additionally, seven horses

(14%) had four-fold increase in IgG antibody titers against H7N7 subtype of influenza virus. It is important to notice that four horses (8%) had specific antibodies for both subtypes - H3N8 and H7N7. The results of HI titres are shown in Figure 2.

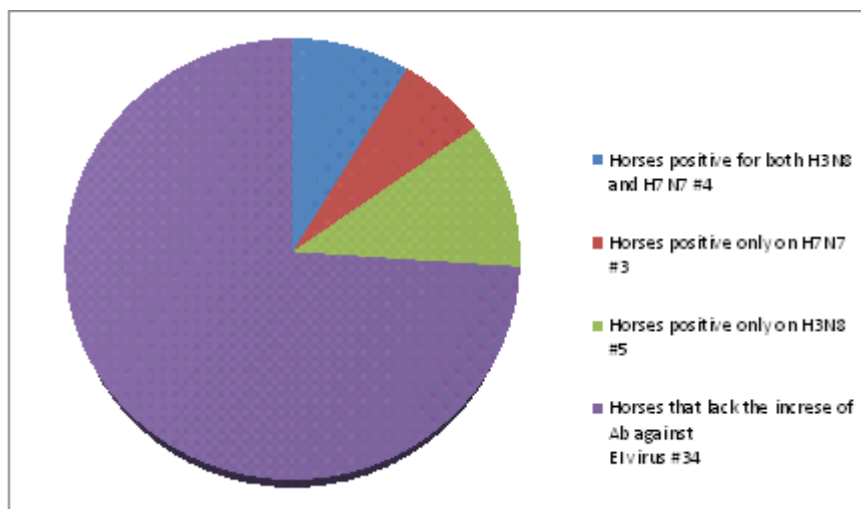


Figure 2. Results of HI tests on horses.

We followed recommendations of OIE regarding the set test values for HI test and titer of antibodies ≥ 10 was regarded as a positive. It was concluded that 48 horses (96%) had specific IgG antibodies for H7N7 and 40 horses (80%) were positive for H3N8. It is important to point out that 36 horses (72%) were positive

for both virus subtypes; H3N8 and H7N7. The highest HI titer for the H3N8 was 128 while for H7N7 were 64. The standard deviation and the arithmetic mean of antibody titers are shown in Table 2.

All examined swabs were negative on PCR testing.

Table 2. Standard deviation and the arithmetic mean of antibody titers in the sera of horses.

Variable	Descriptive Statistics (Antibody titers)				
	Valid N	Mean	Minimum	Maximum	SD
H7N7	51	29,25490	4,000000	64,0000	18,52981
H7N7 pared	51	28,62745	2,000000	64,0000	19,95391
H3N8	51	18,78431	2,000000	128,0000	21,35070
H3N8 pared	51	15,17647	2,000000	64,0000	13,97813

DISCUSSION

Fast and reliable diagnosis and isolation of suspicious horses represent the first line of defense against pandemic influenza outbreaks in horses. Recognition of clinical signs (fever, depression, sharp cough and nasal discharge) along with epizootical survey provides the basis for the early detection of infection. In some cases, cough and rapid spread of symptoms of cough in a group of horses that were either unvaccinated against influenza virus or have been in contact with influenza virus infected horses can clearly point out to the EI virus [7]. The definitive confirmation of EI virus could be done by virus isolation on tissue culture or embrionated eggs followed by detection of virus nucleic acid by reverse–transcription polymerase chain reaction (RT-PCR).

It should be pointed that extensive research has been done on seroprevalence of EI in ungulates. In recent years, other species of equine have been evaluated such as donkeys, mules and ponies. It has been recorded that prevalence of EI among ungulates in Pakistan is around 12% [13], while in Turkey is around 9.4% [1].

In our studies virus detection was performed from nasopharyngeal swabs which have been taken from horses that have been suspicious or had some of the clinical signs that resemble EI disease. Unvaccinated horses or horses without protective antibodies once infected with EI virus, will produce large amounts of the EI virus in their respiratory secretions from 4 to 10 days, while the horses that had previously been exposed to EI viral antigens, either through vaccination program or natural infection with wild strains of influenza virus, produce small quantities of the specific subtype of virus and for a shorter period of time [1]. Literature revealed that PCR is the most sensitive test and widely used [9]. Some authors [4] argue that the virus isolation is more sensitive than ELISA, while

other authors [3] had difficulties in isolation of the virus during the epidemic outbreaks, while the ELISA demonstrated rise in specific antibodies for EI virus.

Hematological findings showed that of the total number of horses and ponies 25 had some of the parameters that are outside the reference values. Hematological findings showed the existence of anemia, lymphopenia, leukopenia, leukocytosis, monocytosis or leukocytosis with neutrophilia. Total of 16 horses at least had one hematological parameter outside the reference values.

Clinical signs that resemble EI infection has been diagnosed in 13 horses during the first examination, clinical signs quite vary; as a slight serous discharge from the nose or mucopurulent discharge, crepitus, cough, conjunctivitis and enlargement of submandibular lymph nodes. During the second examination of horses 15 days later symptoms have either disappeared or were less pronounced.

Analysis of titers of antibody revealed that 7 horses (14%) had specific antibodies (IgG) against subtype H7N7, while 9 horses (18%) had specific antibodies against H3N8. In the same time 4 horses had specific antibodies against both subtypes. Serological data confirmed that from 48 horses (96%) had the titer of antibodies greater than 16 against H7N7, while 40 horses (80%) had the specific antibodies (IgG) against H3N8. We found quite unexpected presence of specific antibodies (IgG) for H7N7 in horses that have not been previously vaccinated with H7N7 subtype. These horses never been utilized for sport activity and there was not legal requirements for their vaccination. Questioner also revealed that owners owned horses for a minimum of three years and that they did not vaccinate them. Could horses with specific antibodies for H7N7 be transfected from vaccinated horses we could not confirm with scientific evidence either we could not have evidence that wild and domestic birds played a significant role especially knowing that horses are

dead end of further we could confirm it. Our findings unequivocally confirmed that EI virus subtype H7N7 antibodies (IgG) were present in horses that have not been vaccinated and this is serological evidence that virus H7N7 is circulating in these geographical areas.

CONCLUSION

In conclusion our data suggest that a substantial number of horses (90%) that have not been vaccinated or vaccinated irregularly and kept free on pasture had specific antibodies against both subtypes of EI (H7N7 & H3N8) what suggest that those horses have been exposed to viruses sometimes during their lifetime. Additionally, despite the fact that 20 % of horses had some signs of respiratory disease that resemble EI we were not able to confirm EI nucleic acid by RT-PCR while Directi-gene™ assay confirmed virus presence just in two horses. Failure to

detect virus nucleic acid could be due to fact that nasal swab samples have been taken at the end of the clinical symptoms, other authors [19] have similar PCR negative patient which displayed a significant rising titre to influenza type A.

MANUFACTURERS

¹Idexx. Westbrook, ME, USA.

²Animal and Plant Health Inspection Service, N.V.S. Laboratories. Ames, IA, USA.

³Copan. Murrieta, CA, USA.

⁴Becton, Dickinson and Company. Franklin Lakes, NJ, USA.

⁵Bioline. Alphen aan den Rijn, AE, Netherland.

⁶Life Technologies Corporation. Bleiswijk, NN, Netherland.

Declaration of Interest. The authors report no conflicts of interest. The authors alone are responsible for the content and writing of the paper.

REFERENCES

- 1 **Ataseven V.S. & Daly J.M. 2007.** Seroepidemiology of equine influenza virus infection in Turkey. *Turkish Journal Of Veterinary And Animal Sciences*. 31(3): 199-202.
- 2 **Barbić Lj., Madić J., Turk N. & Daly J. 2008.** Vaccine failure caused an outbreak of equine influenza in Croatia. *Veterinary Microbiology*. 133(1-2): 164-171.
- 3 **Chambers T.M., Shortridge K.F., Li P.H., Powel D.G. & Watkins K.L. 1994.** Rapid diagnosis of equine influenza by the Directigen™ Flu-A enzyme immunoassay. *Veterinary Record*. 135(12): 275-279.
- 4 **Čilerdžić M., Marković M., Petrović N., Stančetić S., Tikvicki G. & Trailović D.R. 2005.** Influenza konja u Srbiji 2004. godine: uzroci i posledice. In: *Stočarstvo, veterinarstvo i agroekonomija u tranzicionim procesima*. (Herceg Novi, Montenegro). pp.45-53.
- 5 **Đuričić B., Samokovlija A., Ilić Ž., Bacić D., Radojičić S. & Gligić A. 2010.** Seroepizootiološka ispitivanja životinja sa lokalneta Obedska bara na prisustvo virusa influence ptica. *Veterinarski Glasnik*. 64(5-6): 307-317.
- 6 **Hannant D. & Mumford J.A. 1996.** Equine influenza, In: Studdert M.J. & Horzinek M.C. (Eds). *Virus Infections of Equines*. 3rd edn. Amsterdam: Elsevier Science, pp.285-293.
- 7 **Kobluk C.N., Ames T.R. & Geor R.J. 1995.** *The horse: Diseases and clinical management*. London: W.B. Saunders, 1325p.
- 8 **Mašić A., Woldeab N., Embury-Hyatt C., Zhou Y. & Babiuk S. 2014.** A single dose vaccination with an elastase-dependent H1N1 live attenuated swine influenza virus protects pigs from challenge with 2009 pandemic H1N1 virus. *Acta Veterinaria-Beograd*. 64(1): 10-23.
- 9 **Meijer A., Bosman A. & van de Kamp A. 2006.** Mesasurement of antibodies to avian influenza virus A (H7N7) in humans by hemagglutination inhibition test. *Journal of Virological Methods*. 132(1-2): 113-120.
- 10 **Office International des epizooties (OIE). 2012.** *Terrestrial Manual*. Chapter 2.5.7. 23p
- 11 **Pailot R., Hannant D., Kydd J.H. & Daly J.M. 2006.** Vaccination against equine influenza: quid novi? *Vaccine*. 24(19): 4047-4061.
- 12 **Palese P. & Shaw M.L. 2007.** Orthomyxoviridae: the virus and their replication. In: Knipe D.M. & Howley P.M. (Eds). *Fields Virology*. 5th edn. Philadelphia: Lippincott-Raven, pp.1647-1689.
- 13 **Sajid M., Ahmad M.D., Khan M.A., Anjum M.A. & Mushtaq M.H. 2012.** Investigation of equine influenza virus in two geographical regions of Pakistan. *Tropical Animal Health and Production*. 45(2): 693-694.
- 14 **Savić B., Radanović O., Jovičić D., Nešić K., Ivanović S., Stevančević O., Cvetojević Đ. & Kasagić D. 2015.** Survey of infectious agents associated with porcine respiratory disease complex (PRDC) in Serbian swine herds using polymerase chain reaction (PCR) detection. *Acta Veterinaria (Beograd)*. 65(1): 79-88.

- 15 Šekler M., Ašanin R., Krnjajić D., Palić T., Milić N., Jovanović T., Kovačević D., Plavšić B., Stojanović D., Vidanović D. & Ašanin D. 2009.** Examination of presence of specific antibodies against avian Influenza virus in some species of wild birds. *Acta Veterinaria (Beograd)*. 59(4): 381-403.
- 16 Trailović D.R. 2000.** *Respiratorne bolesti konja*. Beograd: Fakultet veterinarske medicine Univerziteta u Beogradu, 57p.
- 17 Van Maanen C. & Cullinane A. 2002.** Equine influenza virus infections: an update. *Veterinary Quarterly*. 24(2): 79-94.
- 18 Vasković N., Šekler M., Vidanović D., Polaček V., Kukulj V., Matović K. & Jovanović M. 2011.** Pathomorphological lesions and distributions of viral antigens in birds infected with the pathogenic strain of H5N1 avian influenza virus. *Acta Veterinaria (Beograd)*. 61(5-6): 591-598.
- 19 Wallace L.A., Collins T.C., Douglas J.D., McIntyre S., Millar J. & Carman, W. F. 2004.** Virological surveillance of influenza-like illness in the community using PCR and serology. *Journal of clinical virology*. 31(1): 40-45.

