

7-1-2015

Preparing for Storms in Louisiana: Manual for Nonreaders

Pam Jenkins

Tara Lambeth

Maggie Olivier

Race Hodges

Hazel Spaulding Parker

See next page for additional authors

Follow this and additional works at: https://scholarworks.uno.edu/chart_pubs



Part of the [Bilingual, Multilingual, and Multicultural Education Commons](#), and the [Curriculum and Instruction Commons](#)

Recommended Citation

Jenkins, Pam; Lambeth, Tara; Olivier, Maggie; Hodges, Race; Parker, Hazel Spaulding; Farris, Monica; and Rinehart, Jeff, "Preparing for Storms in Louisiana: Manual for Nonreaders" (2015). *CHART Publications*. Paper 46.

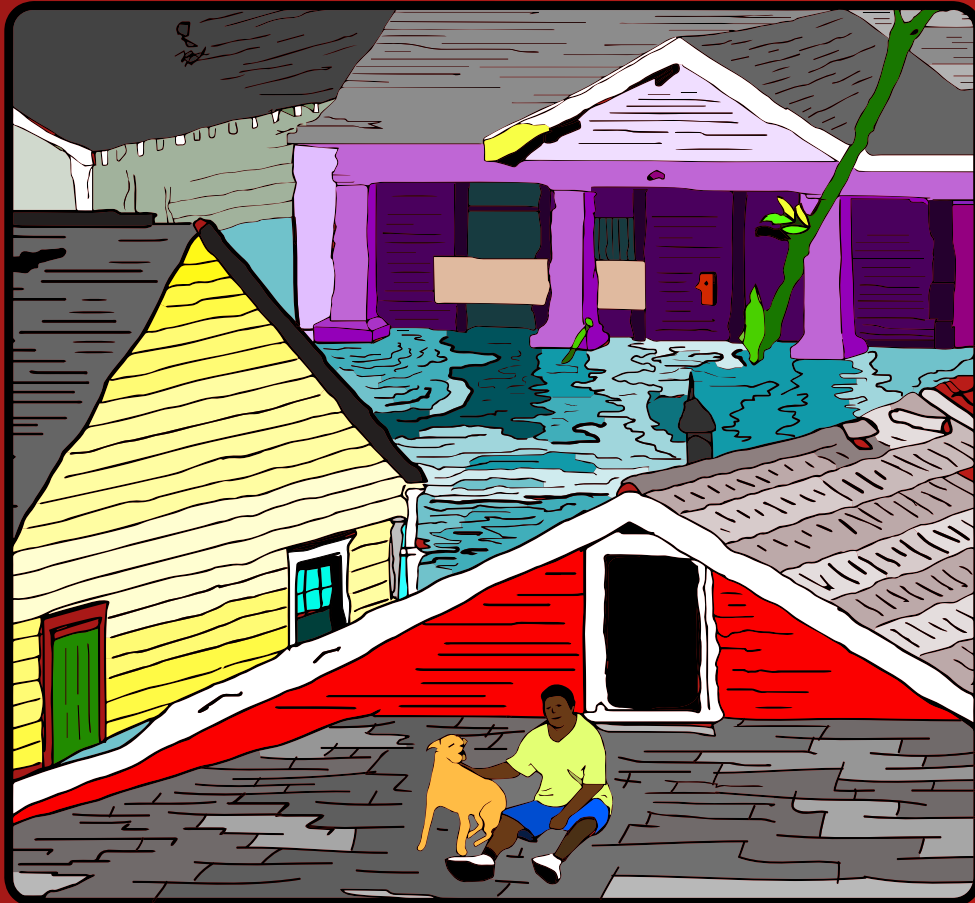
https://scholarworks.uno.edu/chart_pubs/46

This General Information is brought to you for free and open access by the Center for Hazards Assessment, Response and Technology (CHART) at ScholarWorks@UNO. It has been accepted for inclusion in CHART Publications by an authorized administrator of ScholarWorks@UNO. For more information, please contact scholarworks@uno.edu.

Authors

Pam Jenkins, Tara Lambeth, Maggie Olivier, Race Hodges, Hazel Spaulding Parker, Monica Farris, and Jeff Rinehart

Hurricanes



Hurricane Damage

Hurricane Season:

- June 1 - November 30th
- Most active: Mid-August, September, October



Things to know

Wind speed scale

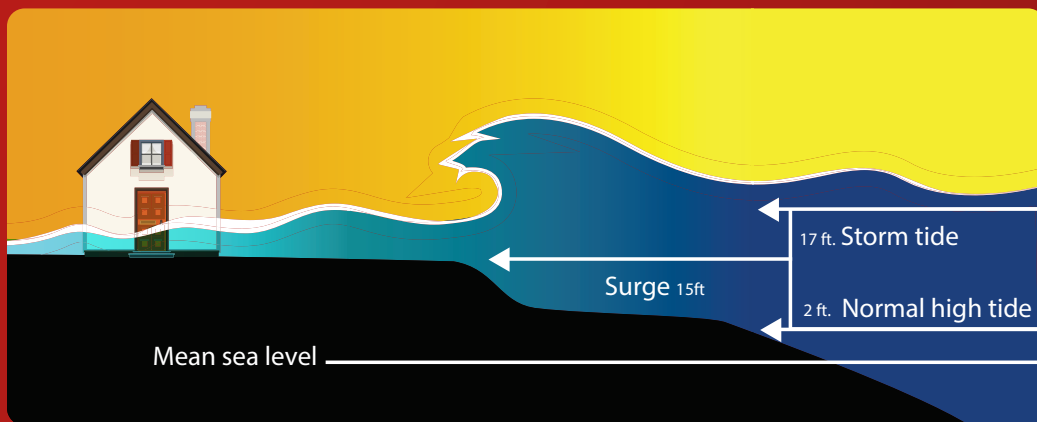


less wind



more wind

Storm Surge



Preparation

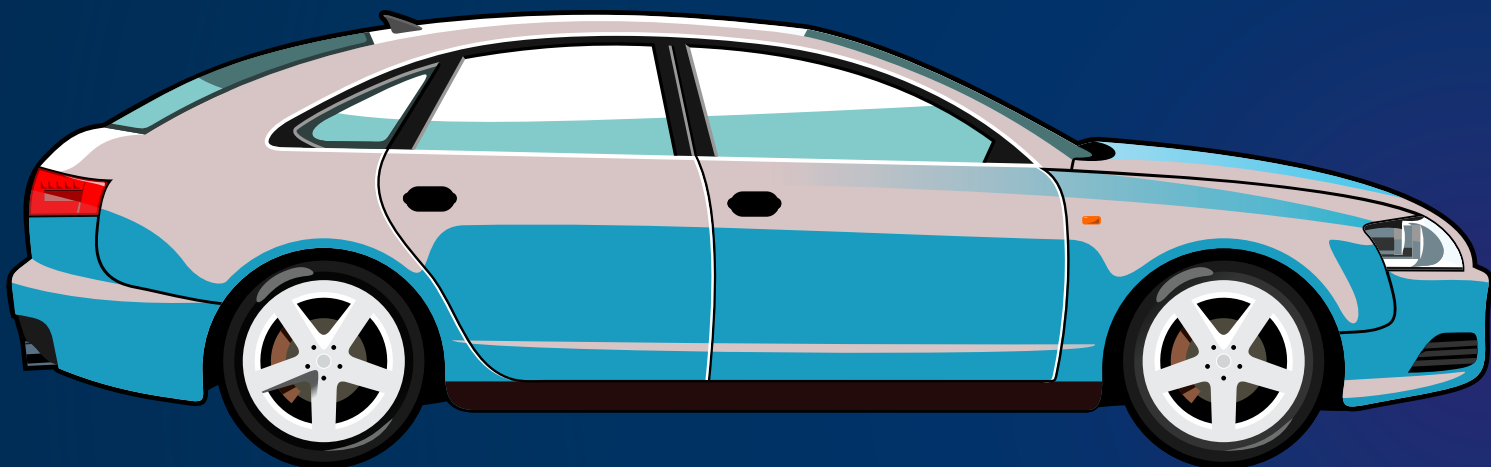
Have a Family Meeting



**Before June 1st:
Meet with your family
Make a plan**



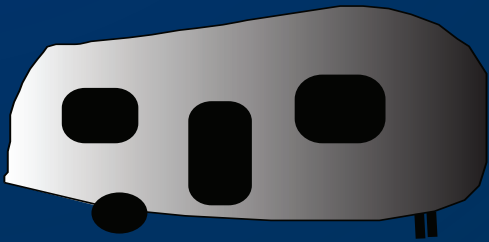
When to go



When to go

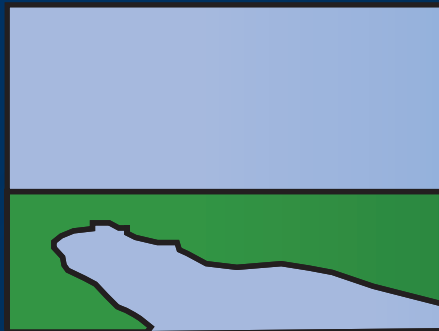


Category 1



Evacuate your mobile home

Category 2



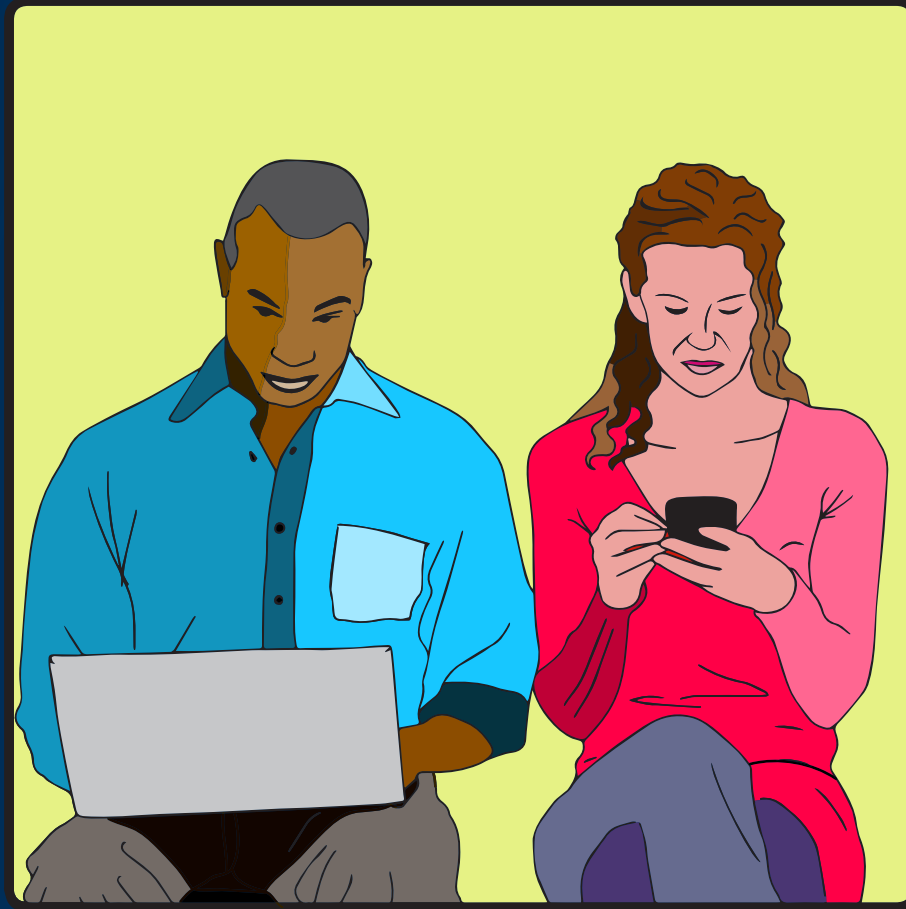
Evacuate the coast

Category 3

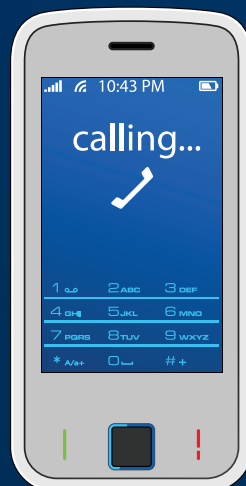


Evacuate your inland home

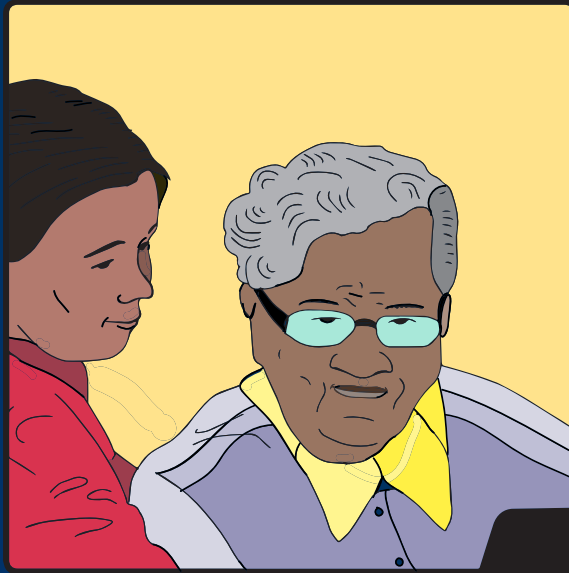
Who to tell



**Call 311
for help
(in New
Orleans)**



Who to tell



Who to bring



Who to bring



What to take

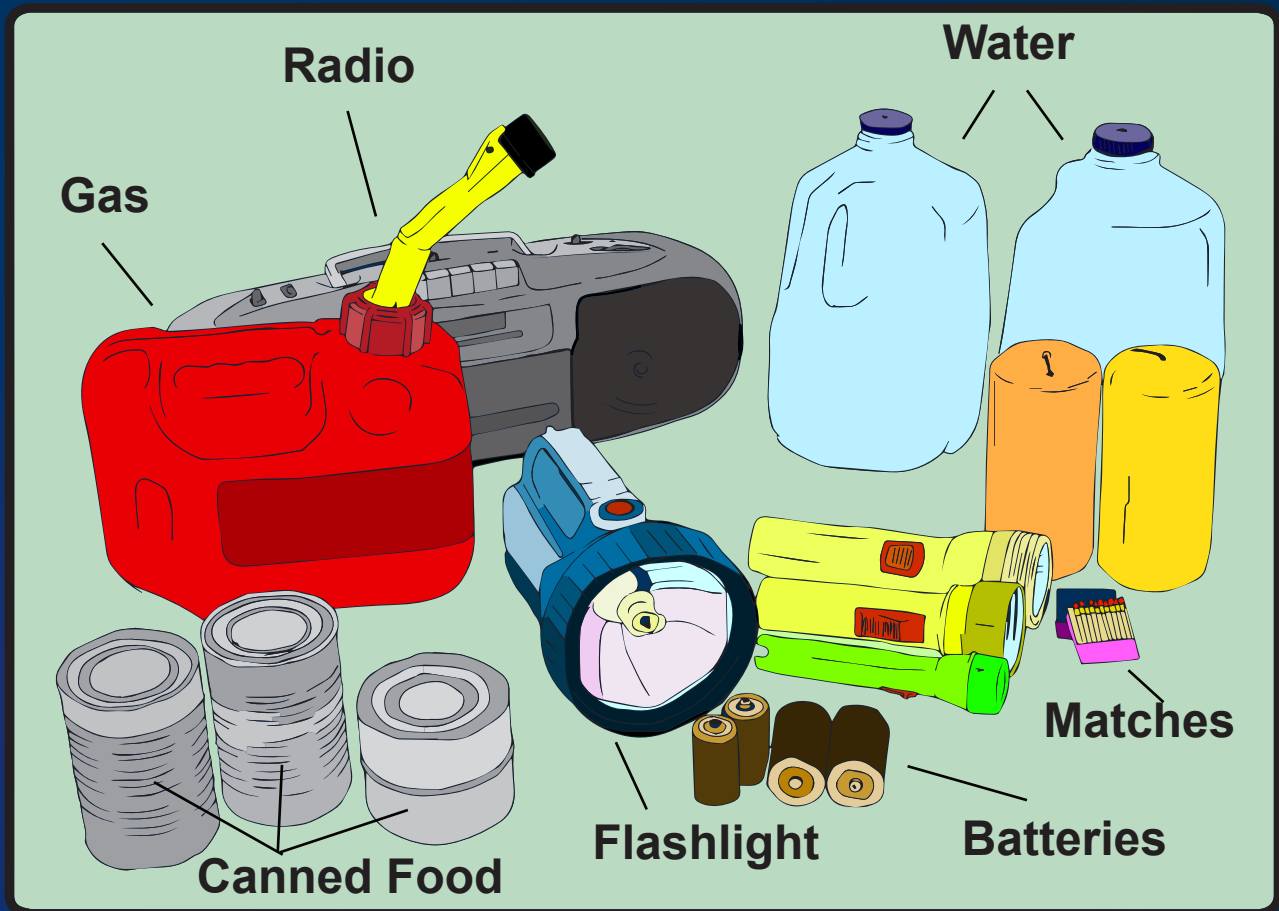


Load the car



Take the bus

What to take



Emergency Supplies

- Gas
- Flashlight
- Water
- Canned Food
- Batteries
- Matches



What to take

Important

Documents



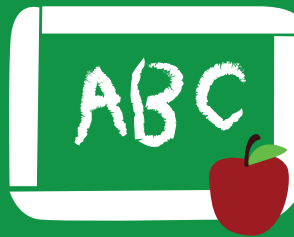
Housing Documents



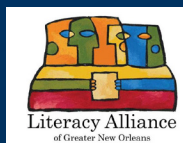
Financial Documents



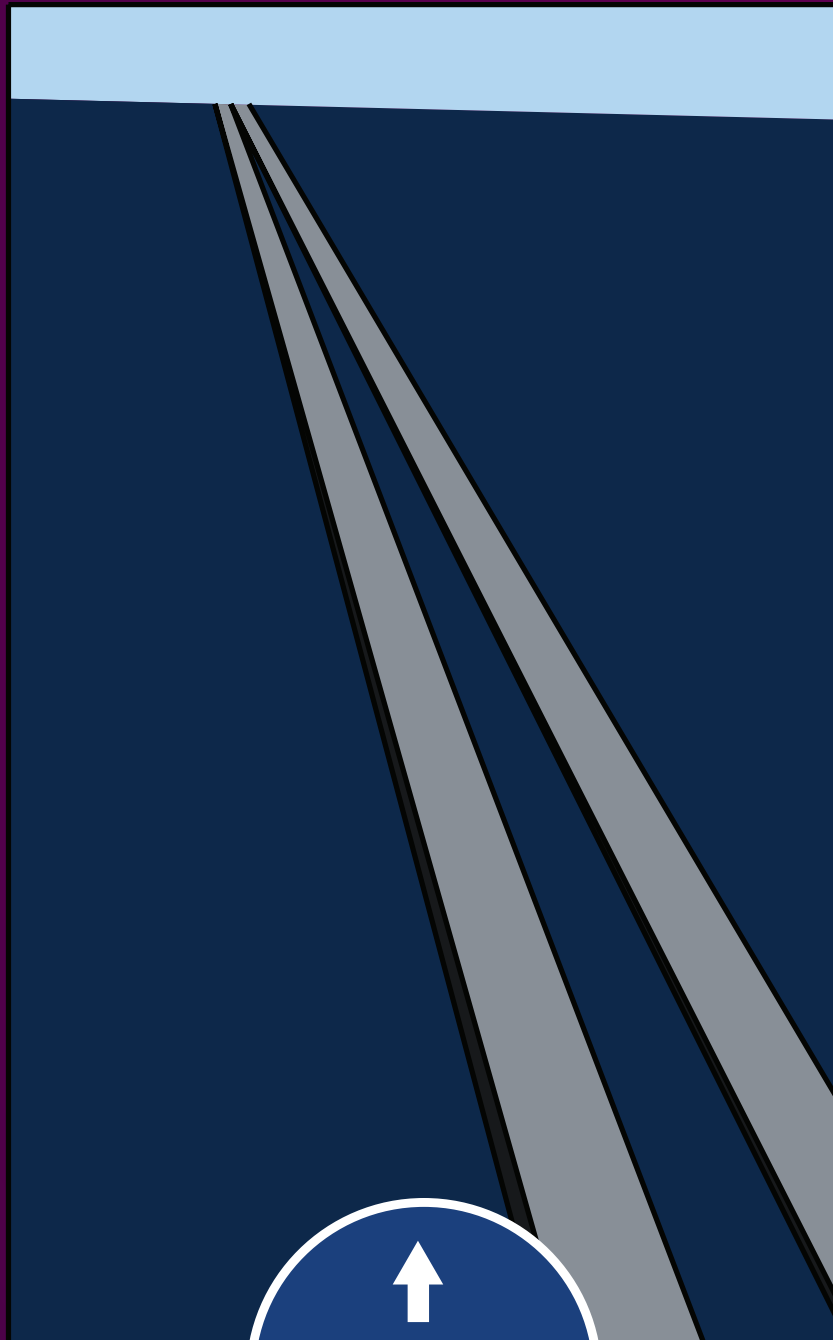
School Documents



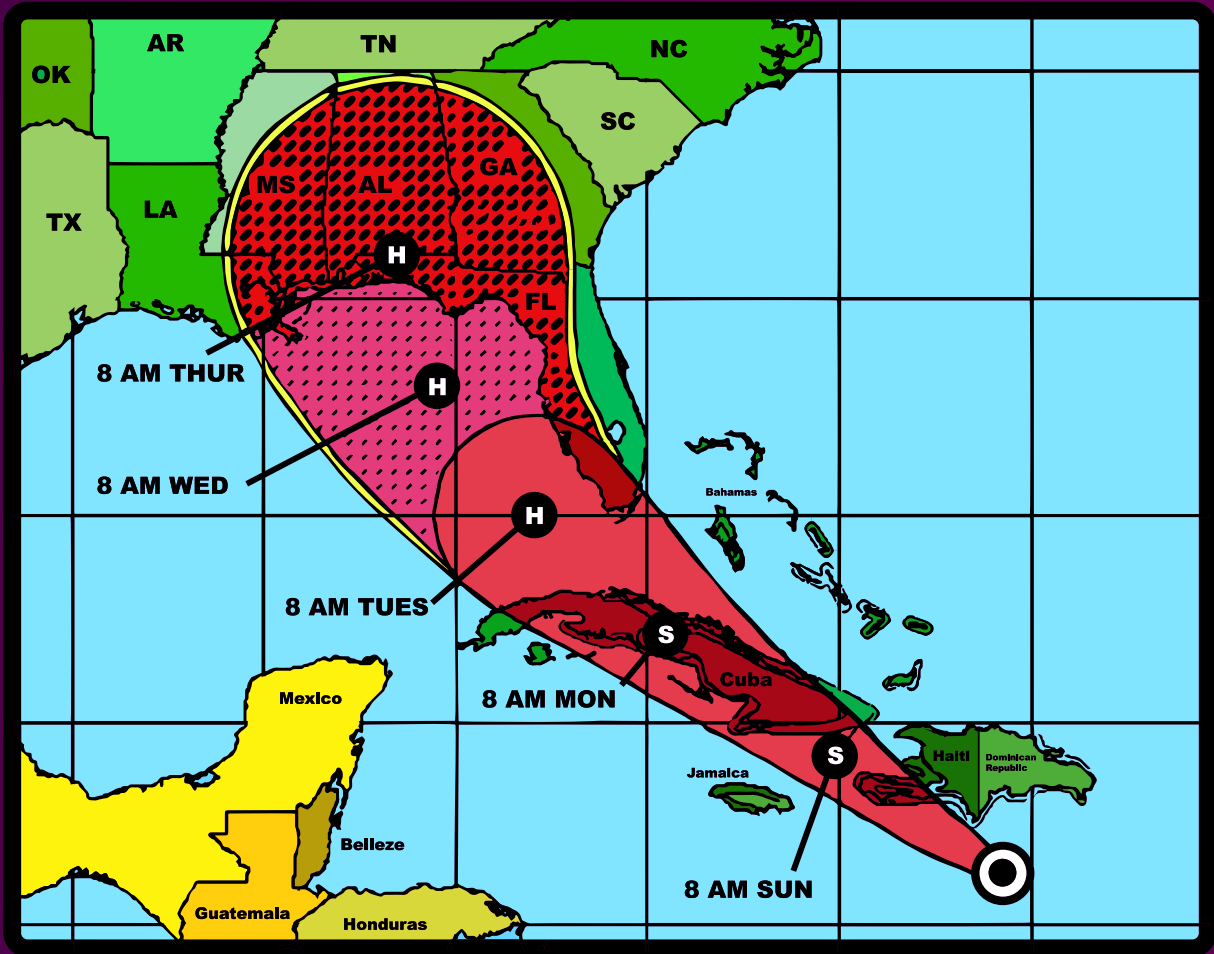
Identification Documents



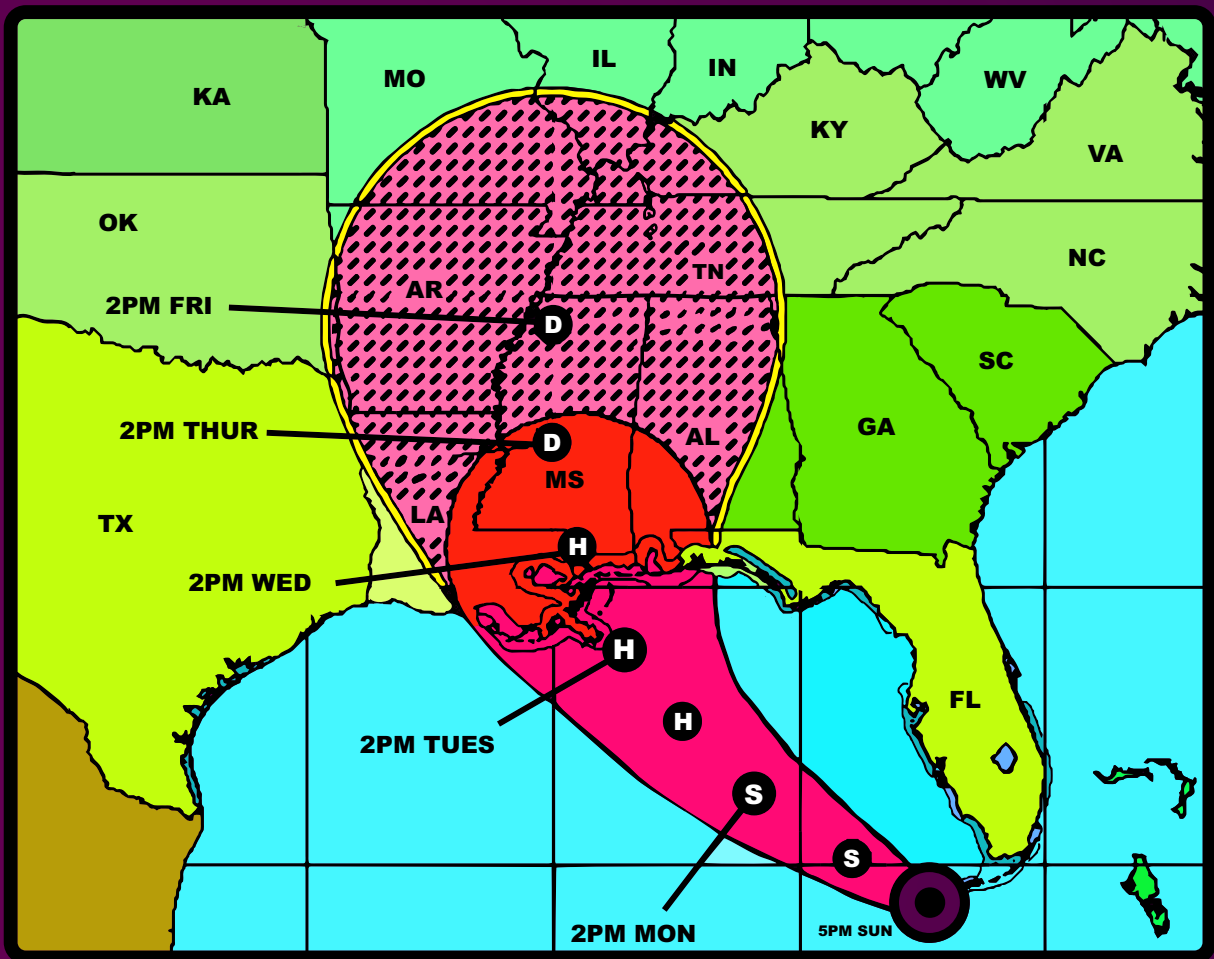
Evacuation



↑
HURRICANE
EVACUATION
ROUTE



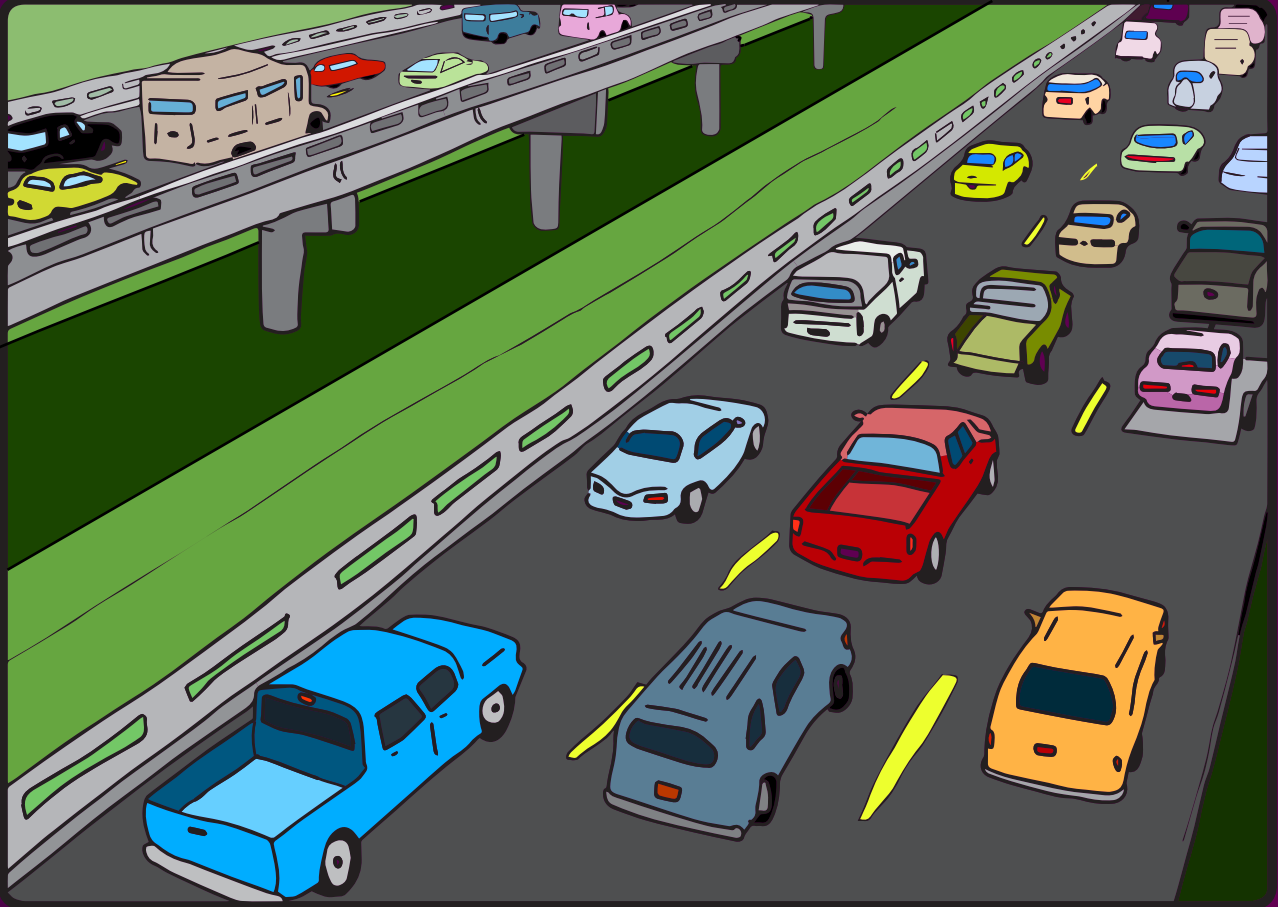
Hurricane watch



Hurricane warning



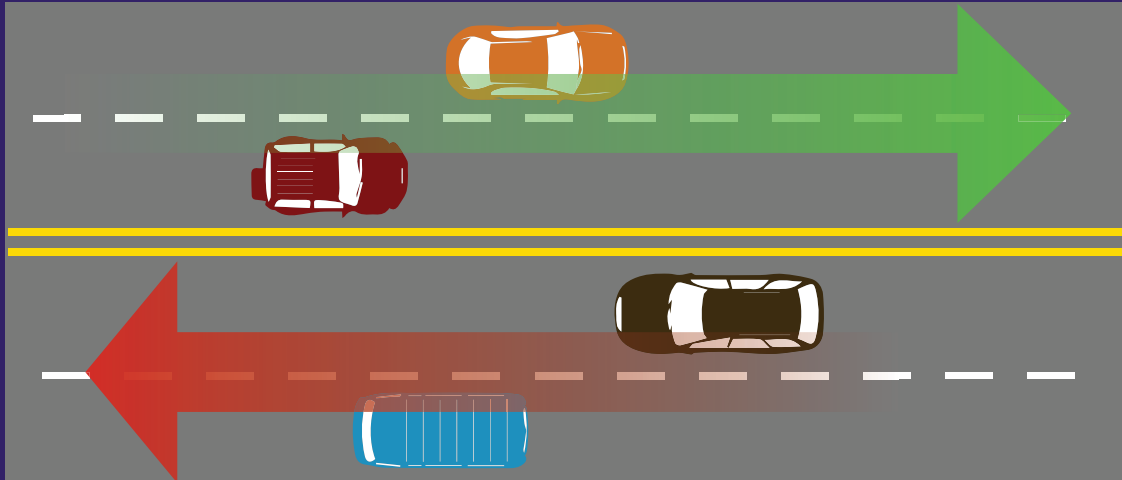
Contraflow



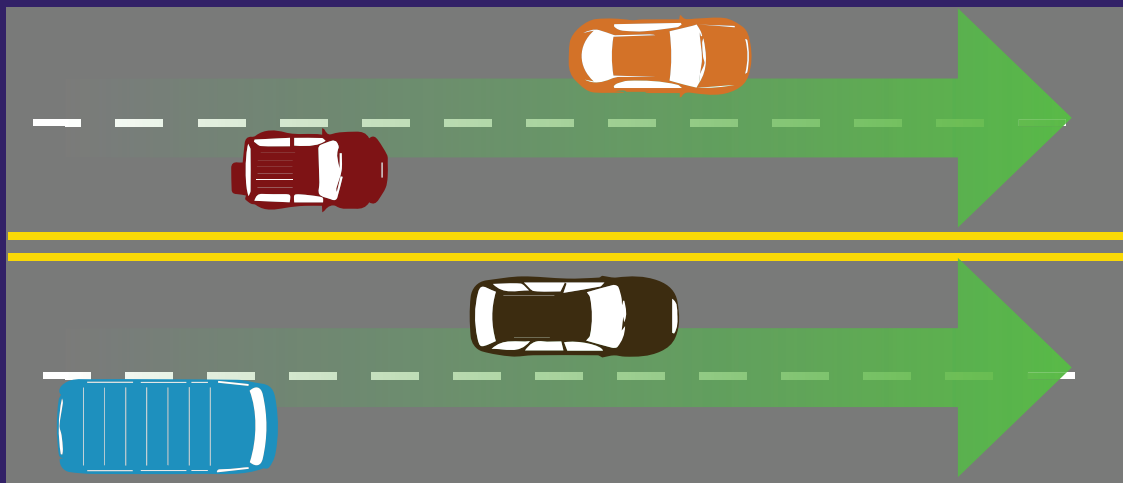
- Contraflow - both sides of the highway, driving the same way
- Look for signs and directions
- Some exits will close

Contraflow

Normal Traffic Conditions



Contraflow Traffic Conditions



Shelter

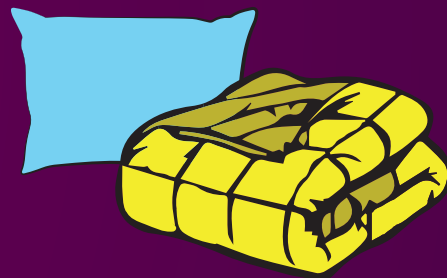


Shelter Tips

- Obey rules



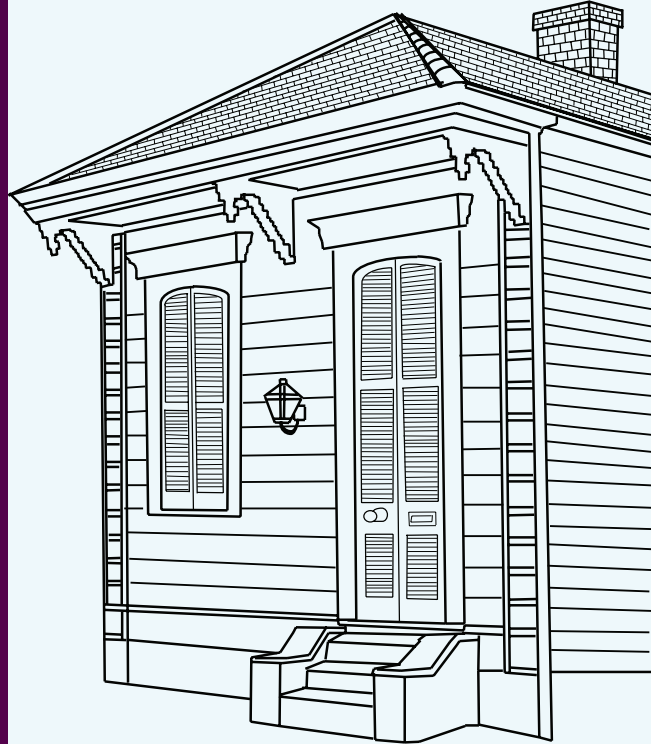
- Ask for help



- Know your rights



Shelter in Place



Shelter in place when:

- There is no mandatory evacuation
- You are out of the way of the storm
- You are on high ground



Returning



Be safe

Be Informed



Listen to the radio



Watch TV

Be Cautious



- Watch for storm damage
- Watch for damaged electrical lines

How to get help



How to get help

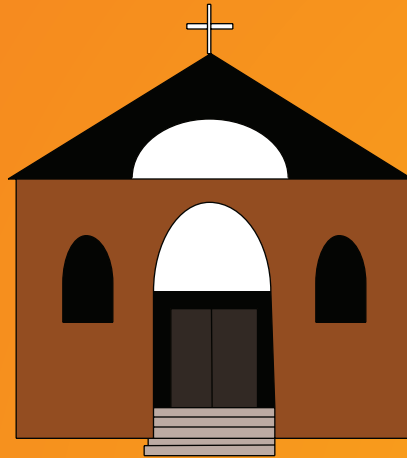


FEMA

www.DisasterAssistance.gov

1-800-621-3362

Get help from:



Churches



American Red Cross



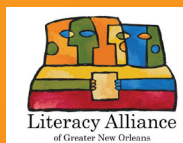
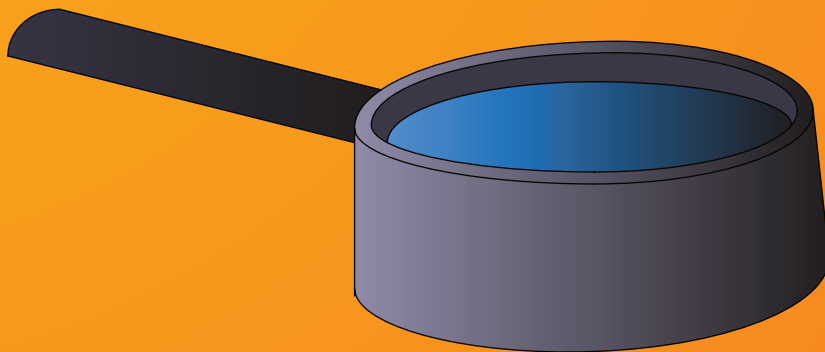
Salvation Army

Be Careful

If you smell gas, call the
fire department



Boil water

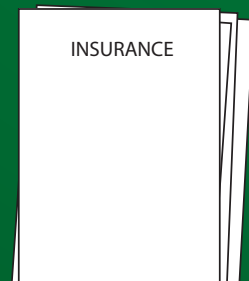


Protection



Retrofit, or protect your home

Buy insurance



Mitigation - protect life and property

