

University of New Orleans

ScholarWorks@UNO

DRU Workshop 2013 Presentations – Disaster
Resistant University Workshop: Linking
Mitigation and Resilience

Conferences and Workshops

3-2013

What about Collections? Mitigation Best Practices for University Collections to Ensure Resilience

Pat Young
University of Delaware

Follow this and additional works at: <https://scholarworks.uno.edu/dru2013>

Recommended Citation

Young, Pat, "What about Collections? Mitigation Best Practices for University Collections to Ensure Resilience" (2013). *DRU Workshop 2013 Presentations – Disaster Resistant University Workshop: Linking Mitigation and Resilience*. Paper 43.
<https://scholarworks.uno.edu/dru2013/43>

This Presentation is brought to you for free and open access by the Conferences and Workshops at ScholarWorks@UNO. It has been accepted for inclusion in DRU Workshop 2013 Presentations – Disaster Resistant University Workshop: Linking Mitigation and Resilience by an authorized administrator of ScholarWorks@UNO. For more information, please contact scholarworks@uno.edu.

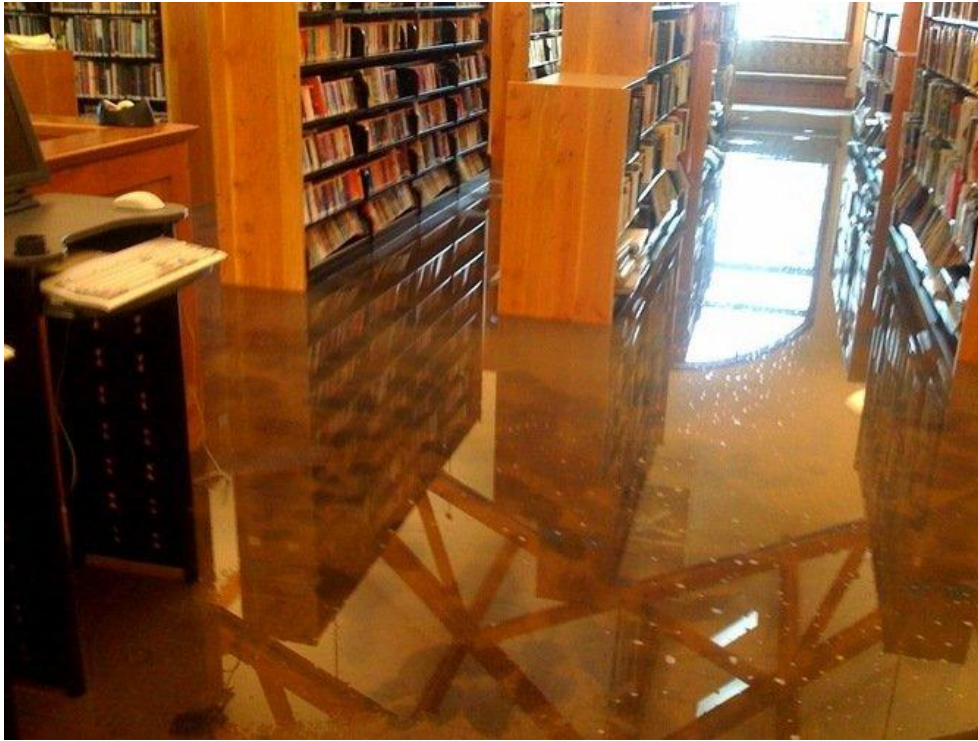
What about Collections?

Mitigation Best Practices for
University Collections to
Ensure Resilience

University of Iowa Flood



Estacada Library Flood, Estacada, Oregon



Background

University of Delaware

- 7 colleges / academic schools
- 1,128 full time faculty
- 17,484 undergraduate students
- 3,654 graduate students
- 718 professional and continuing studies students

(source: www.udel.edu/IR/fnf/index.html)

Background (continued)

University of Delaware - Locations

- Main campus (Newark, Delaware)
- 4 satellite locations:
 - Wilmington (New Castle County)
 - Dover (Kent County)
 - Georgetown (Sussex County)
 - Lewes – Marine Studies campus – coastal

(source: www.udel.edu/IR/fnf/index.html)

Background (continued)

University of Delaware - Buildings

- 173 academic buildings – 116 on main campus + 57 on satellite campuses
- 37 administrative buildings – 30 on main campus + 7 on satellite campuses


(source: www.udel.edu/IR/fnf/build.html)

Background (continued)

Morris Library (main library + 4 branch libraries)

- 2,800,000+ books and periodicals
- 3,400,000+ microforms
- 6,700+ linear feet of manuscripts and archives
- 510,000+ other resources (DVDs, maps, etc.)

(source: www.udel.edu/IR/fnf/library.html)



Emergency Response Working Group (ERWG)

Member Units (13)

- Anthropology
- Art Conservation
- Art History
- Center for Historic Architecture and Design (CHAD)
- Delaware Center for Teacher Education
- Disaster Research Center (DRC)
- Fashion and Apparel Studies
- Foreign Languages and Literatures
- History Media Center
- Morris Library
- Music
- University Archives and Records Management
- University Museums

Supporting Administrative Units (9)

- Communications and Marketing
- Human Resources (training coordination)
- IT – University Media Services
- IT – User Services
- Occupational Health and Safety
- Procurement Services
- Public Safety
- Risk Management
- Supporting Services (includes Movers Services)

Collections contain...

- books
- papers
- manuscripts
- sound recordings (formats range from dictaphone tape to MP3)
- acetate film
- video (VHS to DVD to captured Web clips)
- digital files
- maps
- art objects (various material types)
- paper and electronic records
- artifacts (various material types)

ERWG history and structure

- Formed in 2007
- formal constitution and bylaws adopted in 2008
- 3 officers (Chair, Vice Chair, Secretary)
- Working Groups
 - Vendor (completed)
 - Education & Training
 - Survey & Mapping

Education & Training WG activities

- Fire safety training
- Wet Materials Recovery I: Paper based materials
- Wet Materials Recovery II: Textiles
- Site survey training and implementation
- Creation and maintenance of the eResources and print resources lists for ERWG website
- How to create and maintain an emergency response kit
- How to identify mold
- Active shooter training
- Tabletop exercises

Upcoming activities...

- IT Recovery training
- First Responders open houses
- Hands on drills

ERWG

www.udel.edu/ERWG

Pat Young, Chair – pyoung@udel.edu

Thank you!
Questions???