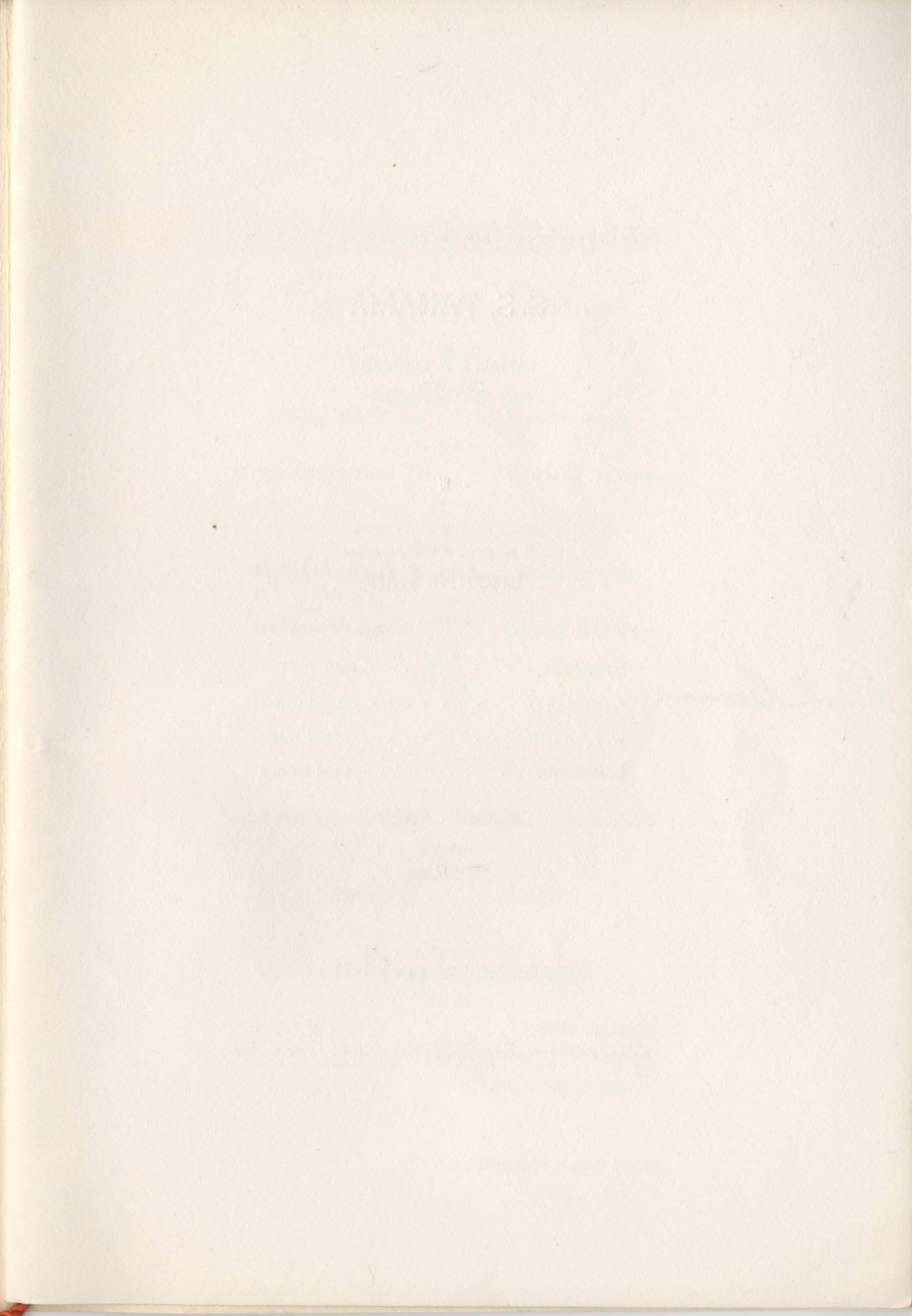
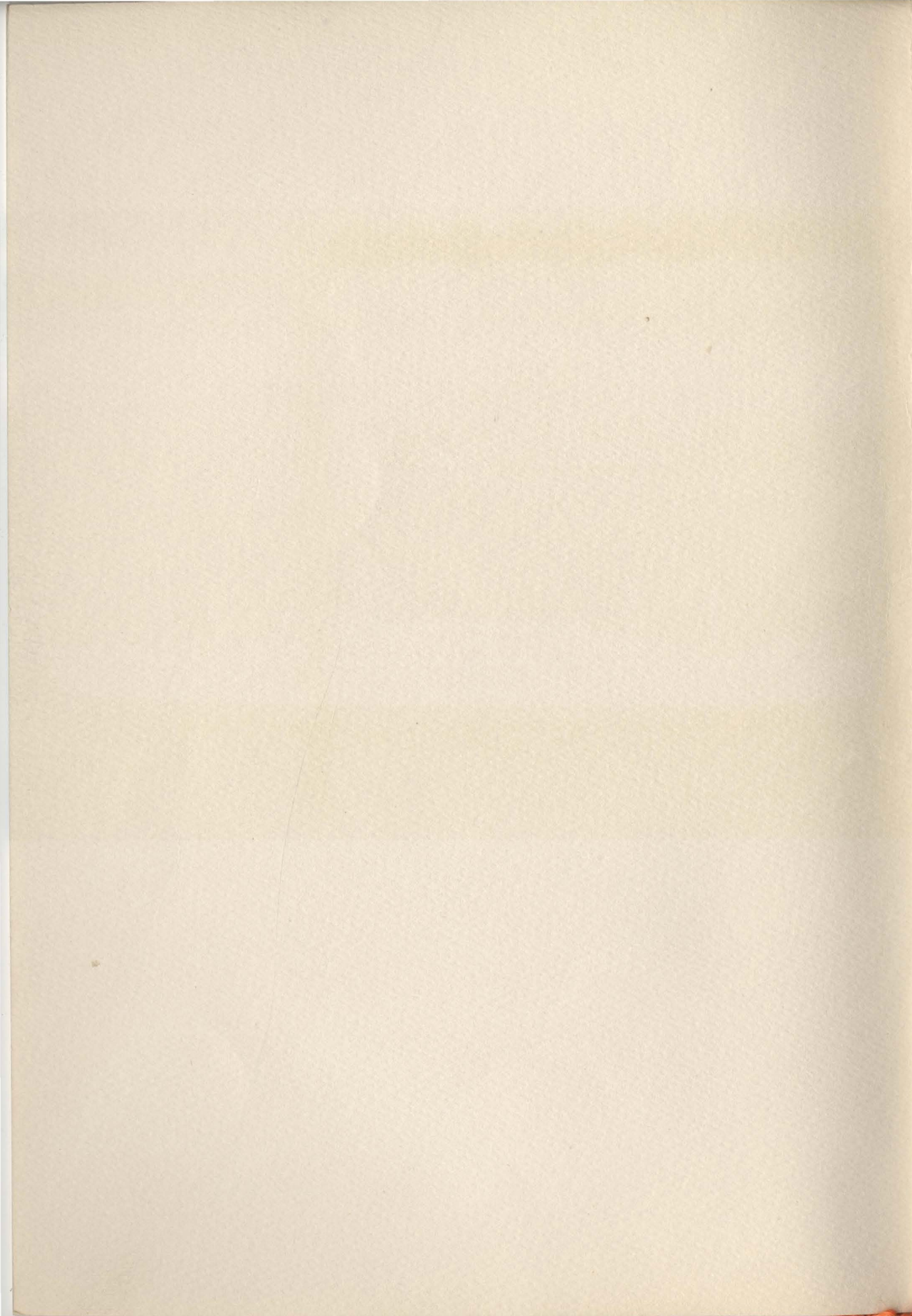




PANAMA *Line*



S. S. PANAMA

CAPTAIN J. W. KIRCHNER
Commander



EXECUTIVE STAFF

J. PETERSEN - - - - - Chief Engineer
F. GORMAN - - - - - Chief Officer
W. F. KRISTEN - - - - - Chief Purser
G. McKNIGHT - - - - - Chief Steward

Sunday, January 28, 1951

Captain's Dinner



California Fruit Cup
Celery and Olives Sardines on Toast

Puree Longchamps Consomme Julienne

Filet of Sole Cardinale
Saute of Chicken a la King
Broiled Sirloin Steak Garni Sauce Bernaise

Asparagus Hollandaise Buttered New Peas

Potatoes
French Fried Boiled Mashed

Pineapple and Cream Cheese Salad

Assorted French Pastry Cookies Peach Melba

Ice Cream
Strawberry Vanilla

Cheese
Swiss American Camembert

Toasted Bents Soda Crackers

Coffee Orange Pekoe Tea

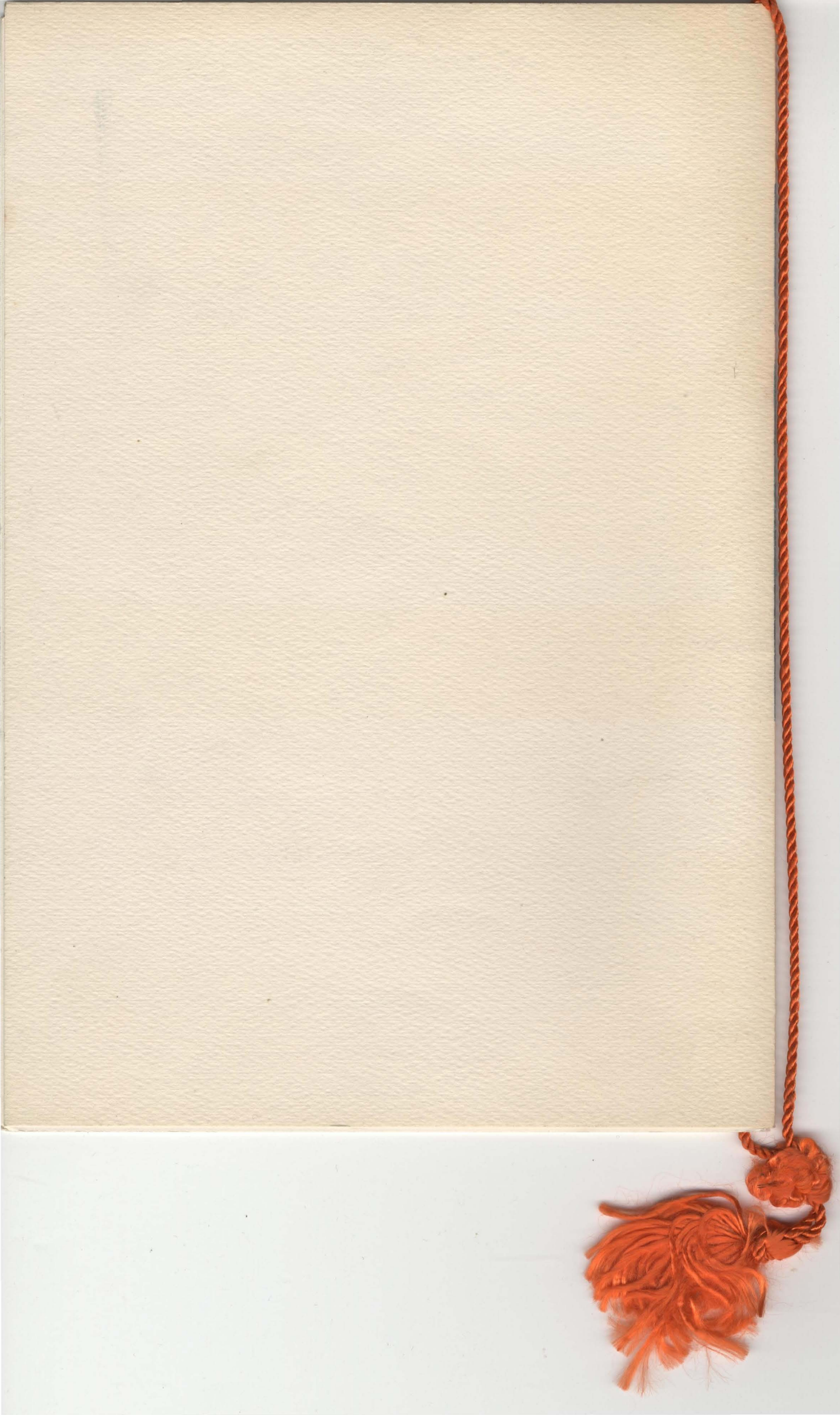
L. ABERASTURI, Chef de Cuisine

Frank Gorman

AUTOGRAPHS

James C. Hagerthy - (W. Roxbury)
Boston, Mass.
J. D. Gershowitz } Larchmont, N.Y.
Marcia S. Gershowitz }







Panama
Line